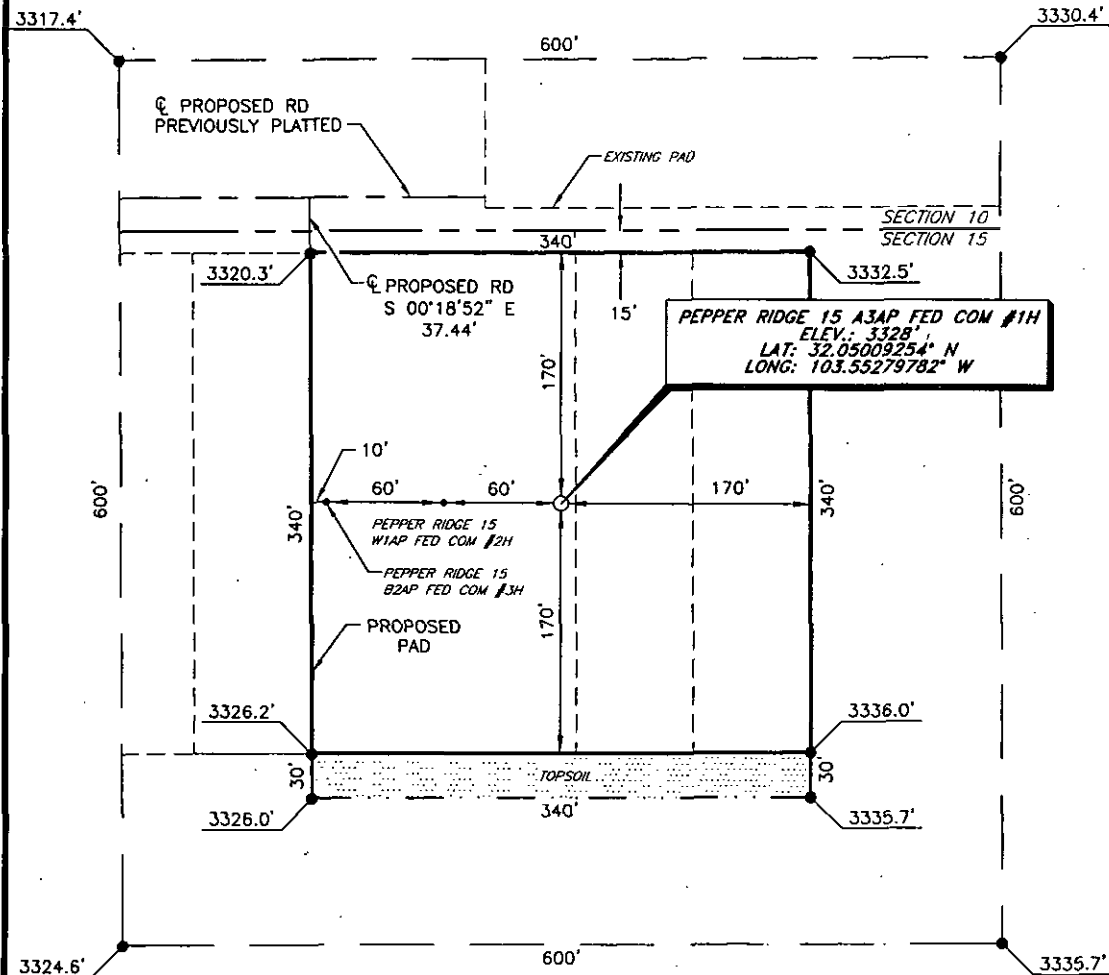


7 OCT 08 2015

MEWBOURNE OIL COMPANY
PEPPER RIDGE 15 A3AP FED COM #1H
 (185' FNL & 500' FEL)
 SECTION 15, T26S, R33E
 N. M. P. M., LEA CO., NEW MEXICO



DIRECTIONS TO LOCATION

From the intersection of CR-1 (Orla Rd.) and CR-2 (Battle Axe Rd.)
 Go East on CR-2 approx. 10.5 miles to a lease road on the right;
 Turn right and go South approx. 256 feet thru fence to lease road on left;
 Turn left and go East approx. 0.4 miles to proposed road;
 Continue East following proposed approx. 0.3 miles to proposed road on right;
 Turn right and go South approx. 208 feet to location on the left.

SCALE: 1" = 100'
 0 50 100
 BEARINGS ARE
 NAD 27 GRID - NM EAST
 DISTANCES ARE
 GROUND.

Firm No.: TX 10193838 NM 4655451

Copyright 2015 - All Rights Reserved

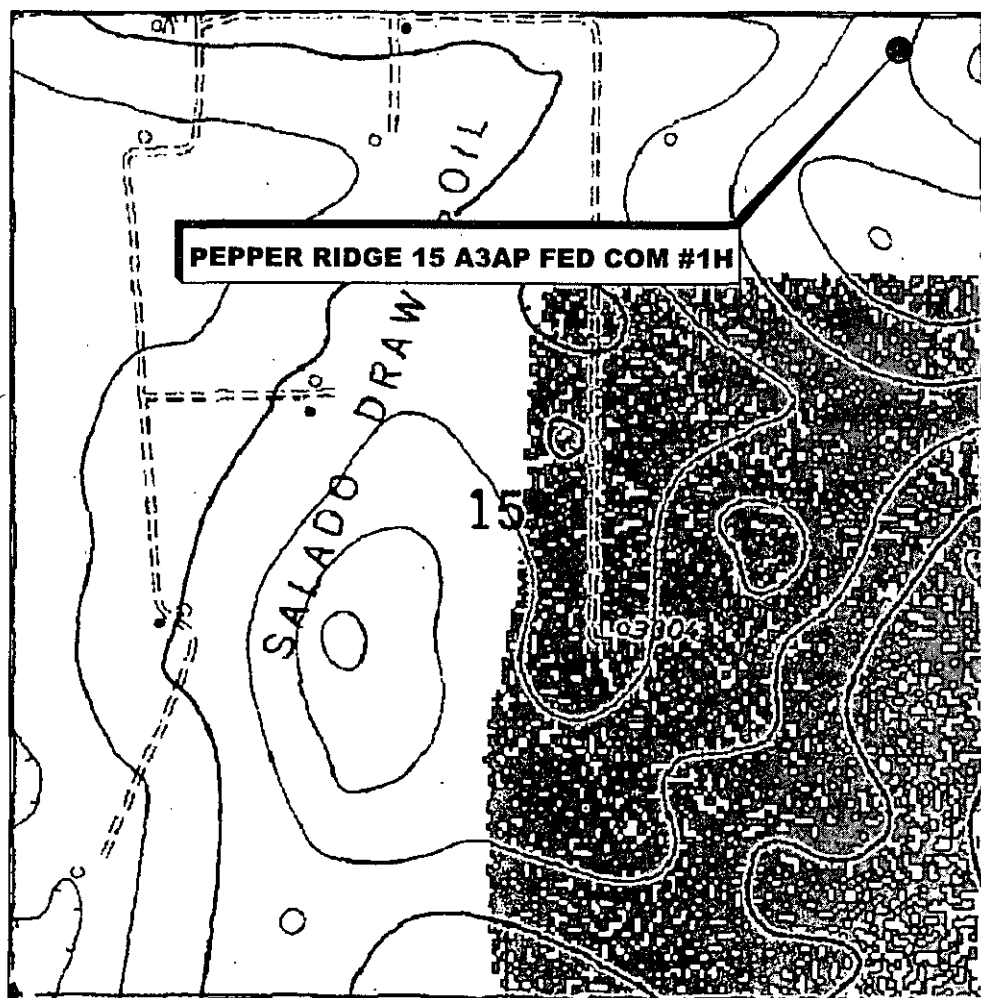
NO.	REVISION	DATE
JOB NO.:	LS1505223	
DWG. NO.:	1505223PAD	

RRC

308 W. BROADWAY ST., HOBBS, NM 88240 (575) 964-8200

SCALE: 1" = 100'
DATE: 5-12-15
SURVEYED BY: BK/ER
DRAWN BY: JC
APPROVED BY: RMH
SHEET : 1 OF 1

LOCATION VERIFICATION MAP



SECTION 15, TWP. 26 SOUTH, RGE. 33 EAST,
N. M. P. M., LEA CO., NEW MEXICO

OPERATOR: Mewbourne Oil Company
LEASE: Pepper Ridge 15 A3AP Fed Com
WELL NO.: 1H
ELEVATION: 3328'

LOCATION: 185' FNL & 500' FEL
CONTOUR INTERVAL: 10'
USGS TOPO. SOURCE MAP:
Paduca Breaks East, NM (1973)

Firm No.: TX 10193838 NM 4655451

Copyright 2015 - All Rights Reserved

NO.	REVISION	DATE
JOB NO.: LS1505223		
DWG. NO.: 1505223LVM		

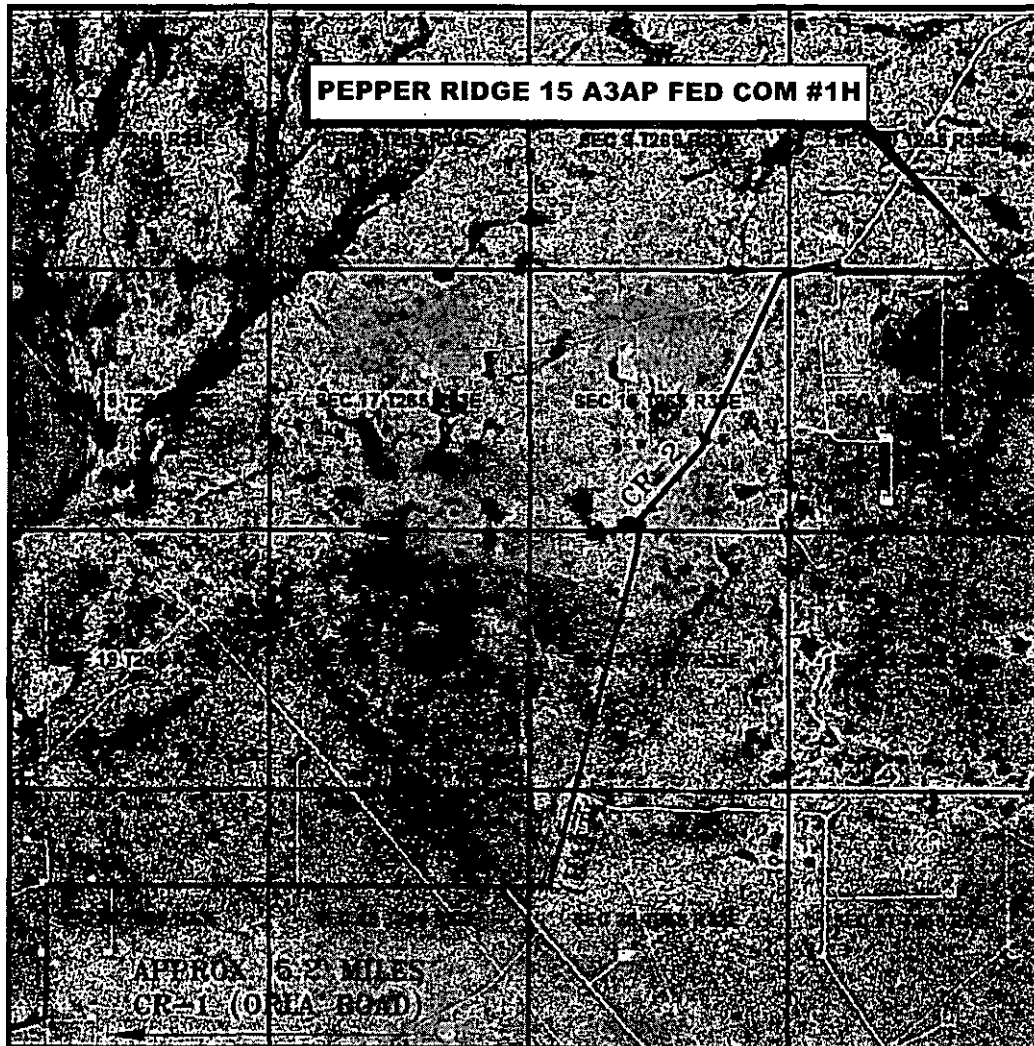
RRC

308 W. BROADWAY ST., HOBBS, NM 88240 (575) 964-8200

SCALE: 1" = 1000'
DATE: 5-12-15
SURVEYED BY: BK/ER
DRAWN BY: JC
APPROVED BY: RMH
SHEET : 1 OF 1

VICINITY MAP

NOT TO SCALE



*SECTION 15, TWP. 26 SOUTH, RGE. 33 EAST,
N. M. P. M., LEA COUNTY, NEW MEXICO*

OPERATOR: Mewbourne Oil Company
LEASE: Pepper Ridge 15 A3AP Fed Com
WELL NO.: 1H

LOCATION: 185' FNL & 500' FEL
ELEVATION: 3328'

Firm No.: TX 10193838 NM 4655451

Copyright 2015 - All Rights Reserved

NO.	REVISION	DATE
JOB NO.:	LS1505223	
DWG. NO.:	1505223VM	

RRC

308 W. BROADWAY ST., HOBBS, NM 88240 (575) 964-8200

SCALE: N. T. S.
DATE: 5-12-15
SURVEYED BY: BK/ER
DRAWN BY: JC
APPROVED BY: RMH
SHEET : 1 OF 1

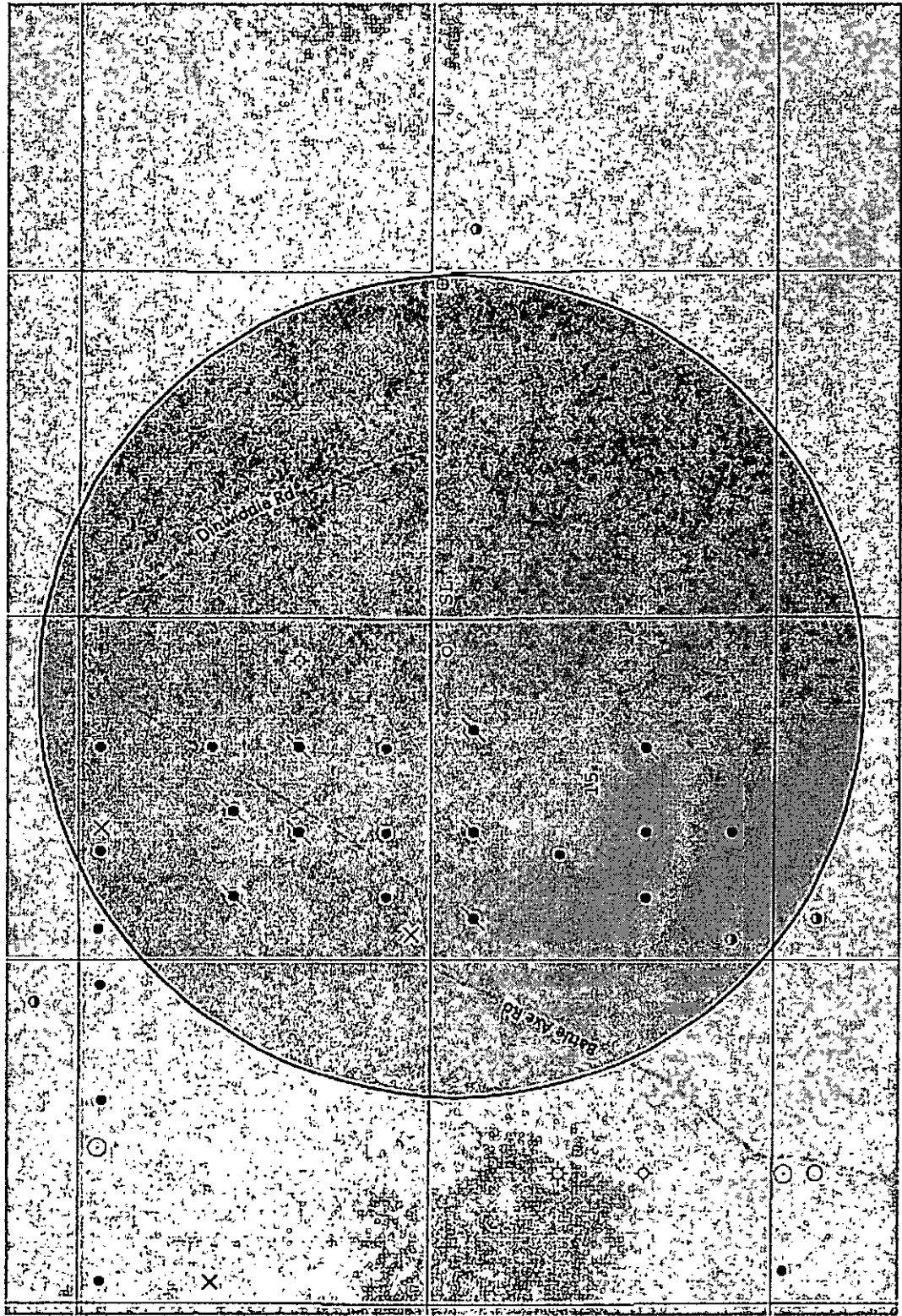


Exhibit "4" - SL - Pepper Ridge A3AP Fed Com #1H

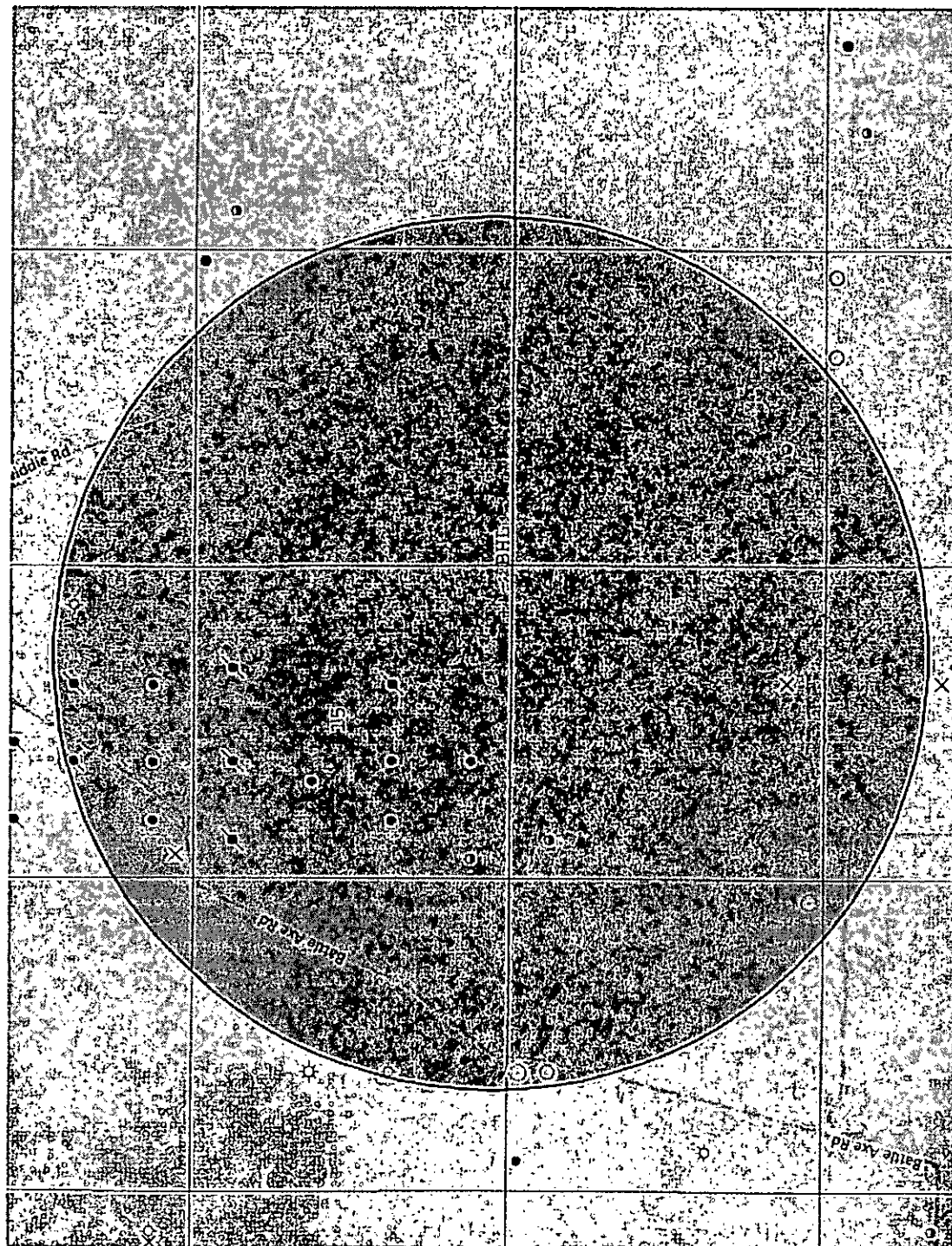
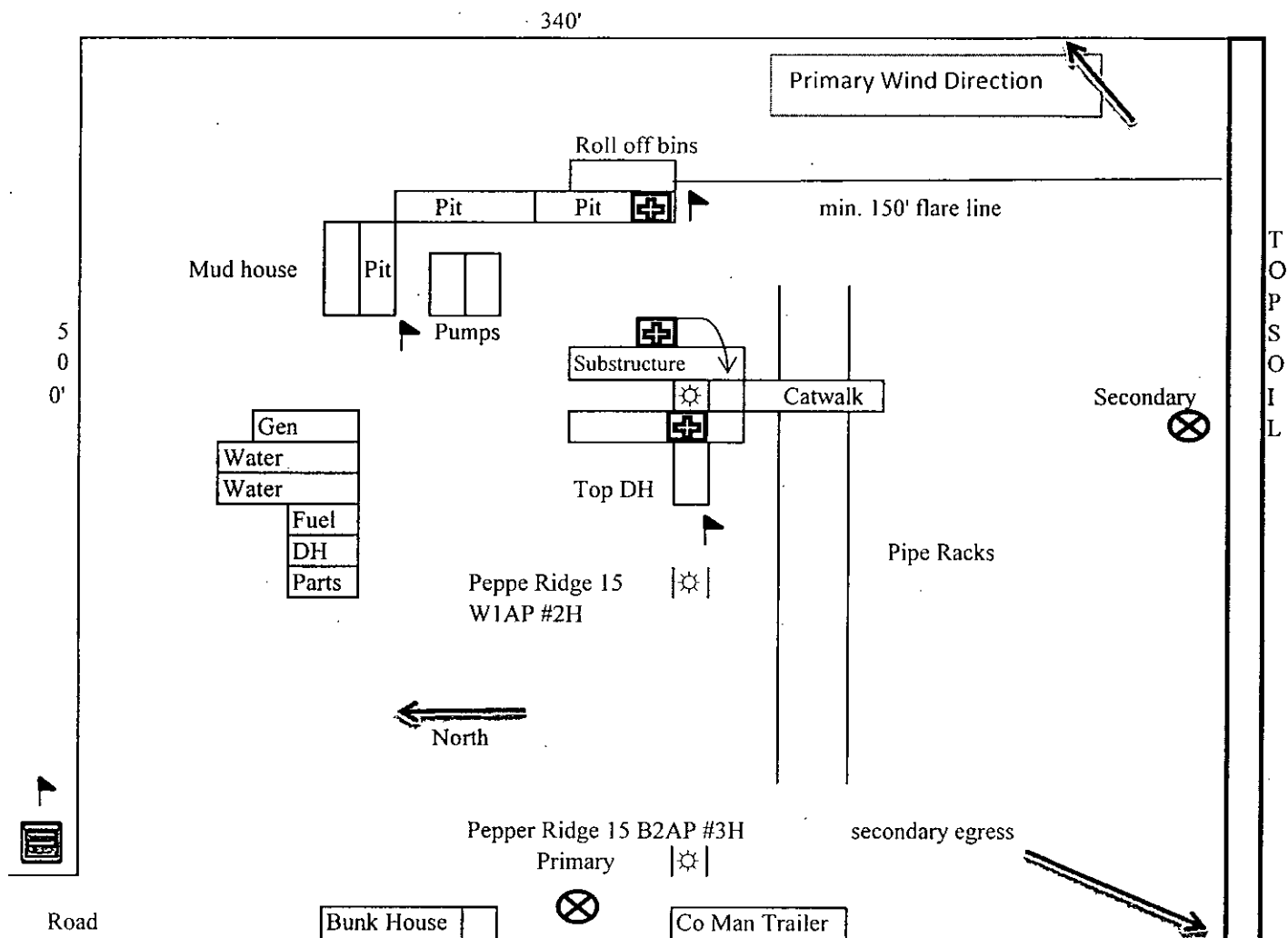


Exhibit "4A" - BHL - Pepper Ridge 15 A3AP Fed Com #1H

H2S Diagram
Closed Loop Pad Dimensions 500' x 340'



Mewbourne Oil Company
Pepper Ridge 15 A3AP Fed Com #1H
185' FNL & 500' FEL
Sec. 15 T26S R33E
Lea County, NM



= Warning Signs



= Wind Markers

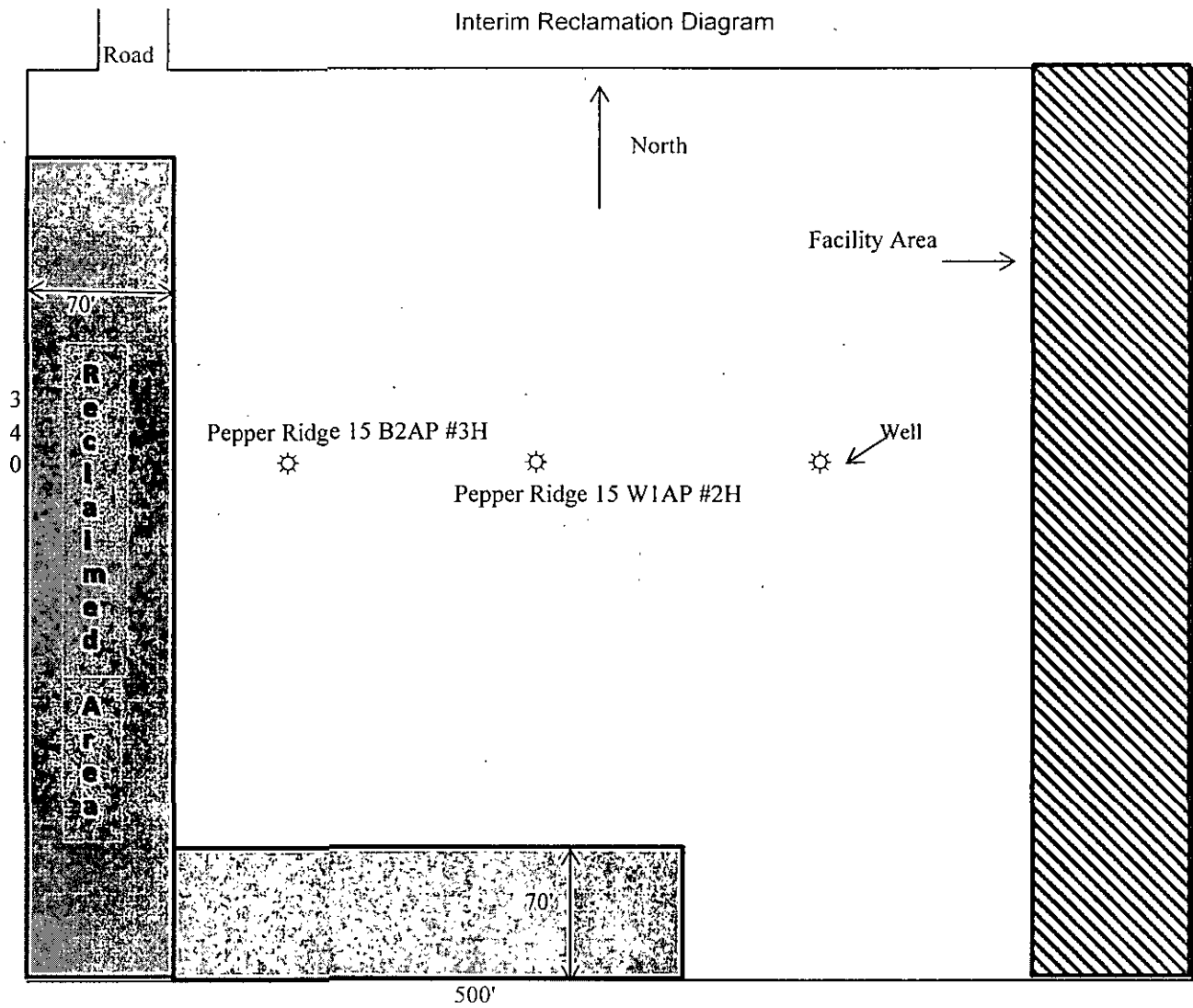


= H2S Monitors



= Safety Stations

Interim Reclamation Diagram



Mewbourne Oil Company
Pepper Ridge 15 A3AP Fed Com #1H
185' FNL & 500' FEL
Sec 15 T26S R33E
Lea County, NM