

District I  
1625 N. French Dr., Hobbs, NM 88240  
Phone: (575) 393-6161 Fax: (575) 393-0720  
District II  
811 S. First St., Artesia, NM 88210  
Phone: (575) 748-1283 Fax: (575) 748-9720  
District III  
1000 Rio Brazos Road, Aztec, NM 87410  
Phone: (505) 334-6178 Fax: (505) 334-6170  
District IV  
1220 S. St. Francis Dr., Santa Fe, NM 87505  
Phone: (505) 476-3460 Fax: (505) 476-3462

State of New Mexico  
Energy, Minerals & Natural Resources Department  
OIL CONSERVATION DIVISION  
1220 South St. Francis Dr.  
Santa Fe, NM 87505

Form C-102  
Revised August 1, 2011  
Submit one copy to appropriate  
District Office

OCT 01 2015

☐ AMENDED REPORT

RECEIVED

WELL LOCATION AND ACREAGE DEDICATION PLAT

|   |                      |  |                     |   |                             |                                  |                             |                               |                      |
|---|----------------------|--|---------------------|---|-----------------------------|----------------------------------|-----------------------------|-------------------------------|----------------------|
| 1 API Number<br><b>70-025-42838</b>               |                      | 2 Pool Code<br><b>7280</b>                             |                     | 3 Pool Name<br><b>BRADLEY BONE SPRING</b> |                             |                                  |                             |                               |                      |
| 4 Property Code<br><b>315298</b>                  |                      | 5 Property Name<br><b>PEPPER RIDGE 15 B2AP FED COM</b> |                     |   |                             |                                  |                             | 6 Well Number<br><b>3H</b>    |                      |
| 7 GRID NO.<br><b>14744</b>                        |                      | 8 Operator Name<br><b>MEWBOURNE OIL COMPANY</b>        |                     |   |                             |                                  |                             | 9 Elevation<br><b>3323'</b>   |                      |
| 10 Surface Location                               |                      |  |                     |   |                             |                                  |                             |                               |                      |
| UL or lot no.<br><b>A</b>                         | Section<br><b>15</b> | Township<br><b>26S</b>                                 | Range<br><b>33E</b> | Lot Idn                                   | Feet from the<br><b>185</b> | North/South line<br><b>NORTH</b> | Feet From the<br><b>660</b> | East/West line<br><b>EAST</b> | County<br><b>LEA</b> |
| 11 Bottom Hole Location If Different From Surface |                      |  |                     |   |                             |                                  |                             |                               |                      |
| UL or lot no.<br><b>P</b>                         | Section<br><b>15</b> | Township<br><b>26S</b>                                 | Range<br><b>33E</b> | Lot Idn                                   | Feet from the<br><b>330</b> | North/South line<br><b>SOUTH</b> | Feet from the<br><b>660</b> | East/West line<br><b>EAST</b> | County<br><b>LEA</b> |
| 12 Dedicated Acres<br><b>160</b>                  |                      | 13 Joint or Infill                                     |                     | 14 Consolidation Code                     |                             | 15 Order No.                     |                             |                               |                      |

No allowable will be assigned to this completion until all interest have been consolidated or a non-standard unit has been approved by the division.

|  |  |  |  |
|--|--|--|--|
| <p>16</p> <p>N 89°38'51" E 2641.82'</p> <p>GEODETIC DATA<br/>NAD 27 GRID - NM EAST</p> <p>SURFACE LOCATION<br/>N 382822.2 - E 741673.6</p> <p>LAT: 32.05009321' N<br/>LONG: 103.55331393' W</p> <p>BOTTOM HOLE<br/>N 378056.5 - E 741710.0</p> <p>CORNER DATA<br/>NAD 27 GRID - NM EAST</p> <p>A: FOUND BRASS CAP "1913"<br/>N 377698.0 - E 737082.0</p> <p>B: FOUND BRASS CAP "1913"<br/>N 380338.7 - E 737063.2</p> <p>C: CALCULATED CORNER<br/>N 382979.6 - E 737041.3</p> <p>D: FOUND BRASS CAP "1913"<br/>N 382995.8 - E 739682.6</p> <p>E: FOUND BRASS CAP "1913"<br/>N 383010.9 - E 742332.0</p> <p>F: FOUND BRASS CAP "1913"<br/>N 380369.7 - E 742352.0</p> <p>G: FOUND BRASS CAP "1913"<br/>N 377731.0 - E 742372.6</p> <p>H: FOUND BRASS CAP "1913"<br/>N 377713.0 - E 739727.9</p> |  | <p>17 OPERATOR CERTIFICATION</p> <p>I hereby certify that the information contained herein is true and complete to the best of my knowledge and belief, and that this organization either owns a working interest or unleased mineral interest in the land including the proposed bottom hole location or has a right to drill this well at this location pursuant to a contract with an owner of such a mineral or working interest, or to a voluntary pooling agreement or a compulsory pooling order heretofore entered by the division.</p> <p><b>BRADLEY BONE</b> 6-3-15<br/>Signature Date<br/><b>BRADLEY BONE</b><br/>Printed Name<br/>E-mail Address</p> |  |
| <p>18 SURVEYOR CERTIFICATION</p> <p>I hereby certify that the well location shown on this plat was plotted from field notes of actual surveys made by me or under my supervision, and that the same is true and correct to the best of my belief.</p> <p><b>5-12-15</b><br/>Date of Survey<br/>Signature and Seal of Professional Surveyor<br/><b>19680</b><br/>Certificate Number</p>   |  | <p>19</p> <p>N 89°40'27" E 2649.94'</p> <p>SEE DETAIL "A"</p> <p>185' S. L. 660'</p> <p>3315.9' 600' 3327.2'</p> <p>3321.9' 600' 3333.4'</p> <p>330' 660'</p> <p>WELL PATH S 00°26'16" E (GRID) 4766.66' (HORIZ.)</p> <p>330' 660'</p> <p>S 00°26'03" E 2641.67'</p> <p>S 00°26'47" E 2639.28'</p> <p>S 89°36'36" W 2645.24'</p>   |  |

RRC - Firm No.: TX 10193838 NM 4655451 - Job No.: LS1505225

OCT 08 2015

3315.9'

600'

OVERHEAD ELECTRIC

PROPOSED RD PREVIOUSLY PLATTED

PROPOSED RD S 00°18'52" E 37.44'

EXISTING PAD

SECTION 10

SECTION 15

3316.9'

340'

15'

3326.5'

PEPPER RIDGE 15 B2AP FED COM #3H  
ELEV.: 3323'  
LAT: 32.05009321° N  
LONG: 103.55331393° W

170'

10'

60'

60'

340'

PROPOSED PAD

PEPPER RIDGE 15 W1AP FED COM #2H

PEPPER RIDGE 15 A3AP FED COM #1H

340'

170'

3321.5'

30'

3322.1'

340'

TOPSOIL

30'

3330.4'

3330.9'

600'

3327.2'

3321.9'

600'

3333.4'

From the intersection of CR-1 (Orla Rd.) and CR-2 (Battle Axe Rd.)  
Go East on CR-2 approx. 10.5 miles to a lease road on the right;  
Turn right and go South approx. 256 feet thru fence to lease road on left;  
Turn left and go East approx. 0.4 miles to proposed road;  
Continue East following proposed approx. 0.3 miles to proposed road on right;  
Turn right and go South approx. 208 feet to location on the left.

Firm No.: TX 10193838 NM 4655451

Copyright 2015 - All Rights Reserved

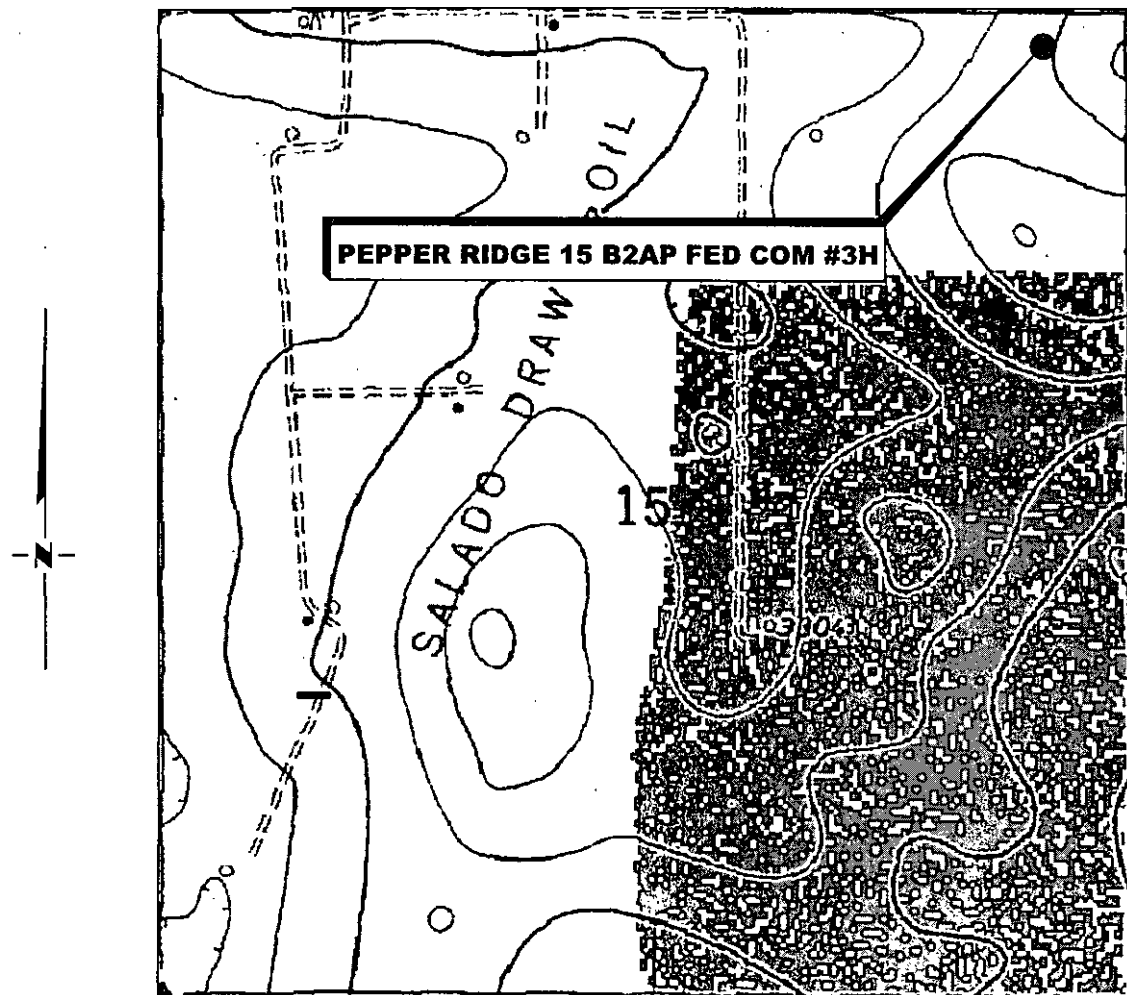
|                      |          |      |
|----------------------|----------|------|
|                      |          |      |
|                      |          |      |
|                      |          |      |
| NO.                  | REVISION | DATE |
| JOB NO.: LS1505225   |          |      |
| DWG. NO.: 1505225PAD |          |      |

# RRC

308 W. BROADWAY ST., HOBBS, NM 88240 (575) 964-8200

|                    |
|--------------------|
| SCALE: 1" = 100'   |
| DATE: 5-12-15      |
| SURVEYED BY: BK/ER |
| DRAWN BY: JC       |
| APPROVED BY: RMH   |
| SHEET : 1 OF 1     |

# LOCATION VERIFICATION MAP



SECTION 15, TWP. 26 SOUTH, RGE. 33 EAST,  
N. M. P. M., LEA CO., NEW MEXICO

OPERATOR: Mewbourne Oil Company  
LEASE: Pepper Ridge 15 B2AP Fed Com  
WELL NO.: 3H  
ELEVATION: 3323'

LOCATION: 185' FNL & 660' FEL  
CONTOUR INTERVAL: 10'  
USGS TOPO. SOURCE MAP:  
Paduca Breaks East, NM (1973)

Firm No.: TX 10193838 NM 4655451

Copyright 2015 - All Rights Reserved

| NO.       | REVISION   | DATE |
|-----------|------------|------|
| JOB NO.:  | LS1505225  |      |
| DWG. NO.: | 1505225LVM |      |

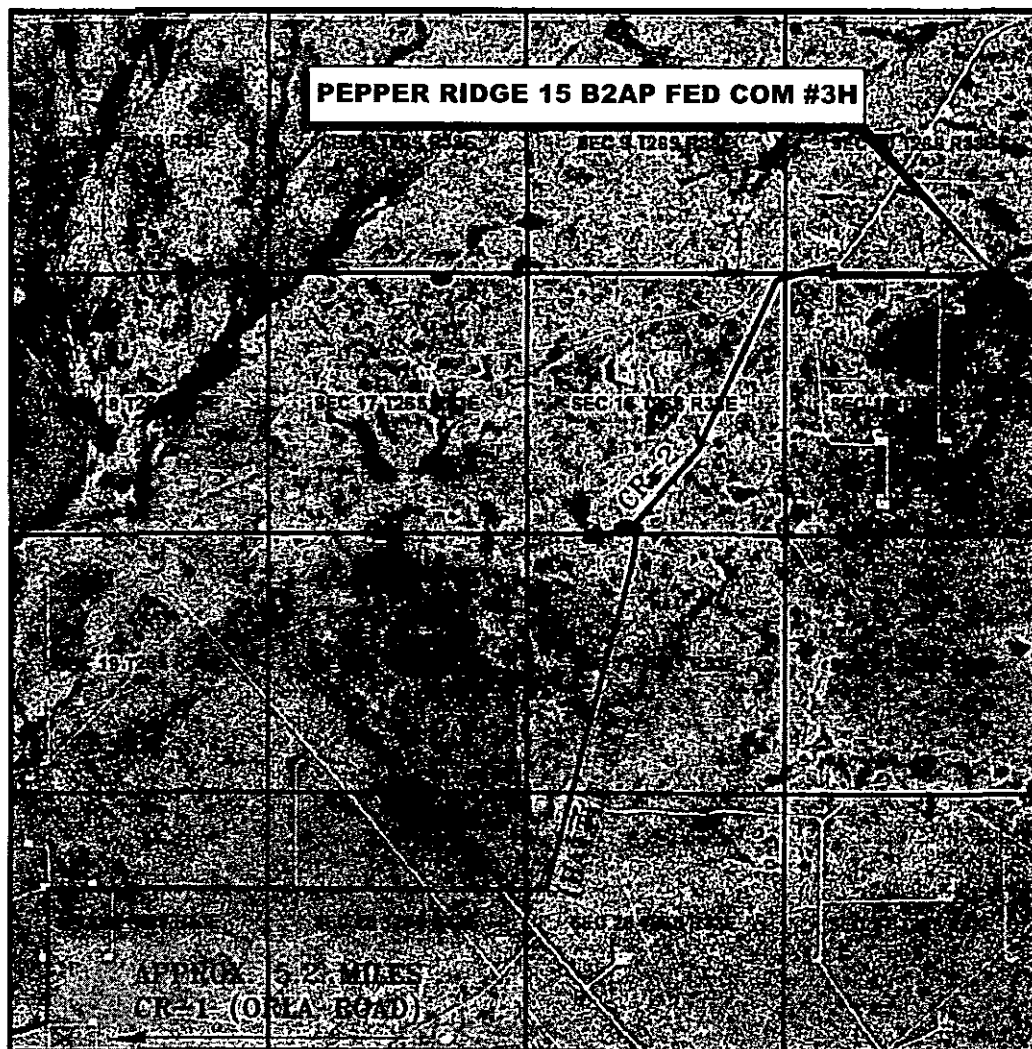
## RRC

308 W. BROADWAY ST., HOBBS, NM 88240 (575) 964-8200

|                    |
|--------------------|
| SCALE: 1" = 1000'  |
| DATE: 5-12-15      |
| SURVEYED BY: BK/ER |
| DRAWN BY: JC       |
| APPROVED BY: RMH   |
| SHEET : 1 OF 1     |

# VICINITY MAP

NOT TO SCALE



*SECTION 15, TWP. 26 SOUTH, RGE. 33 EAST,  
N. M. P. M., LEA COUNTY, NEW MEXICO*

OPERATOR: Mewbourne Oil Company  
LEASE: Pepper Ridge 15 B2AP Fed Com  
WELL NO.: 3H

LOCATION: 185' FNL & 660' FEL  
ELEVATION: 3323'

Firm No.: TX 10193838 NM 4655451

Copyright 2015 - All Rights Reserved

|                     |          |      |
|---------------------|----------|------|
|                     |          |      |
|                     |          |      |
|                     |          |      |
| NO.                 | REVISION | DATE |
| JOB NO.: LS1505225  |          |      |
| DWG. NO.: 1505225VM |          |      |

# RRC

308 W. BROADWAY ST., HOBBS, NM 88240 (575) 964-8200

|                    |
|--------------------|
| SCALE: N. T. S.    |
| DATE: 5-12-15      |
| SURVEYED BY: BK/ER |
| DRAWN BY: JC       |
| APPROVED BY: RMH   |
| SHEET : 1 OF 1     |

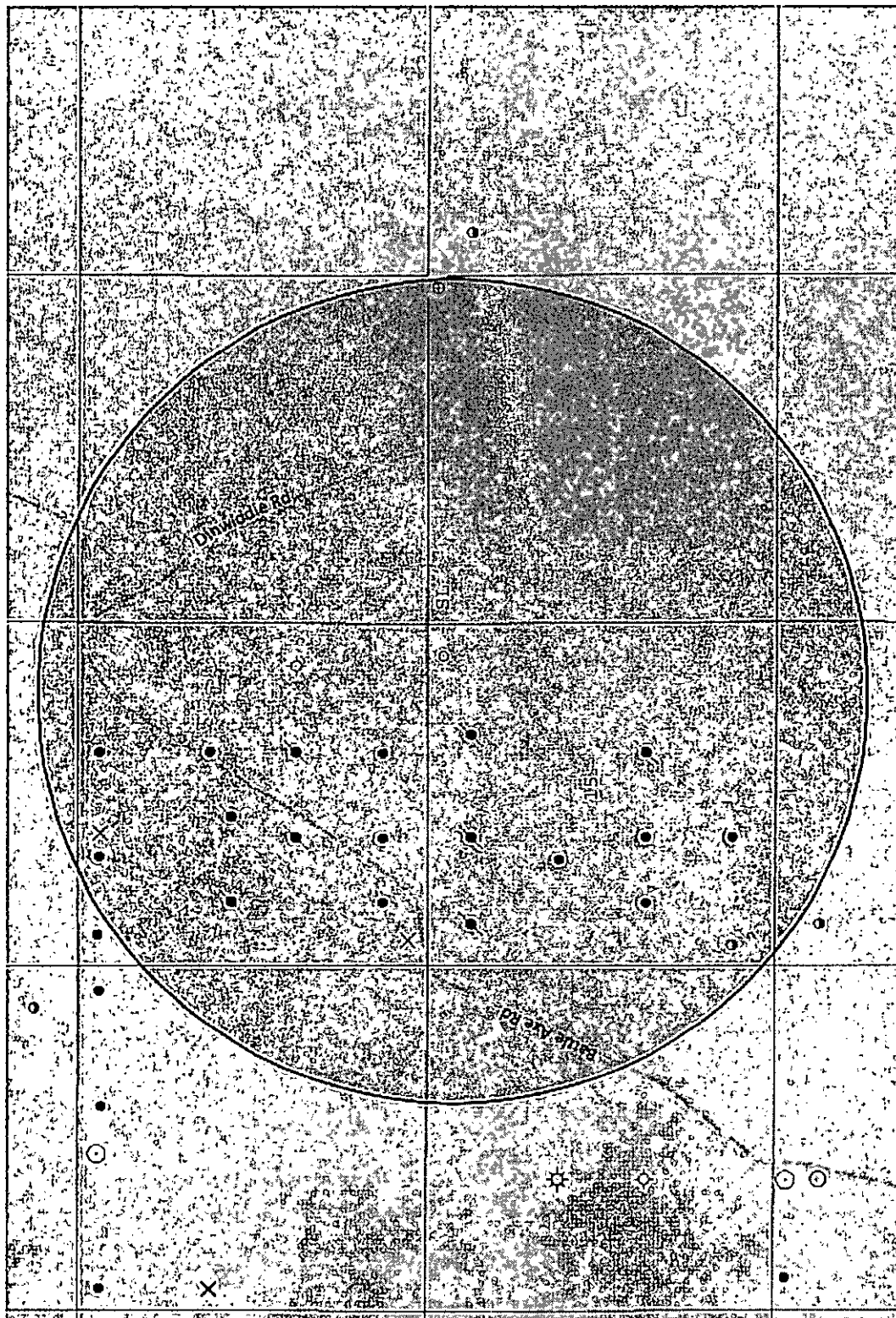
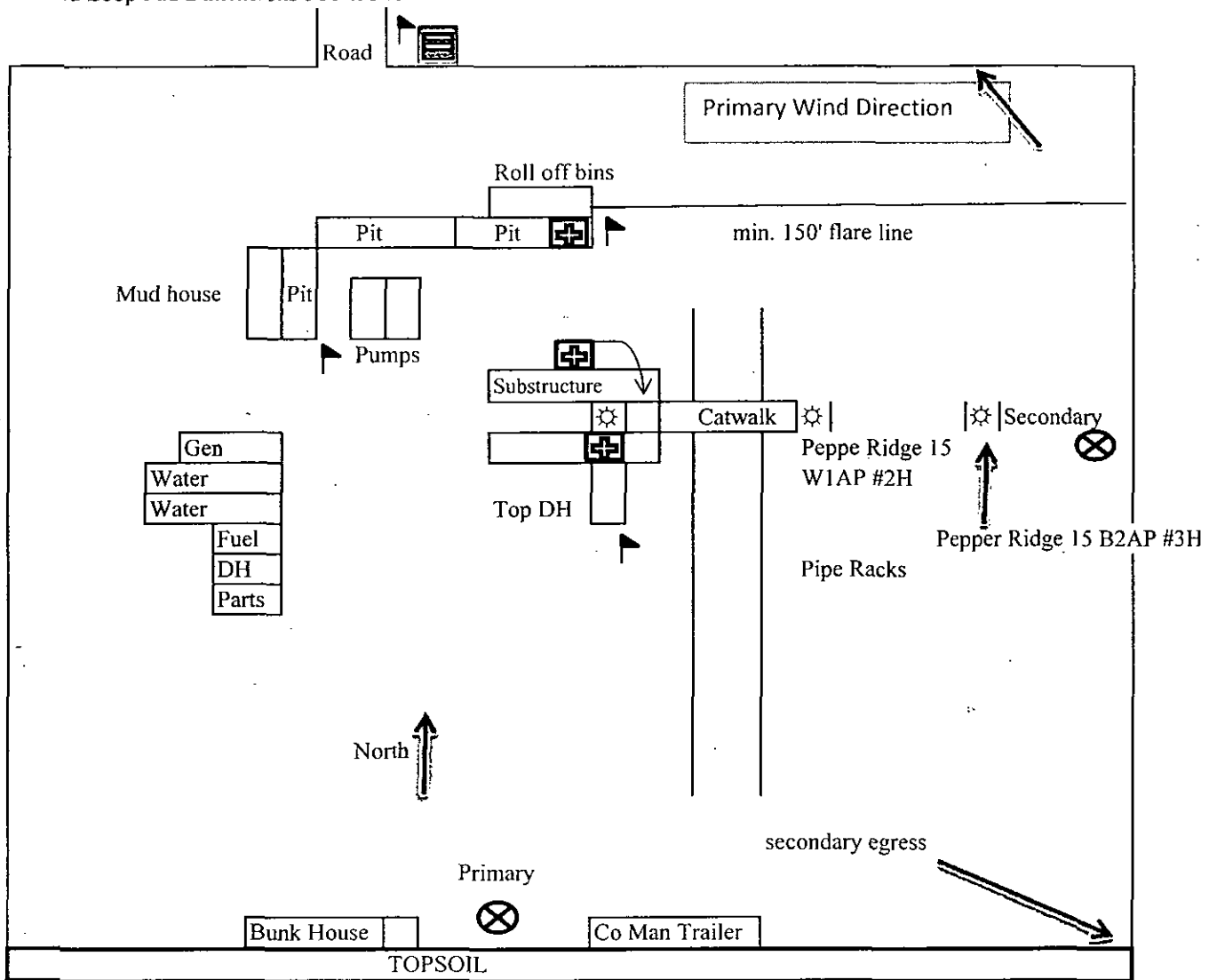


Exhibit "4" - SL - Pepper Ridge B2AP Fed Com #3H



H2S Diagram  
Closed Loop Pad Dimensions 500' x 340'



Mewbourne Oil Company  
Pepper Ridge 15 B2AP Fed Com #3H  
185' FNL & 660' FEL  
Sec. 15 T26S R33E  
Lea County, NM



= Warning Signs



= Wind Markers

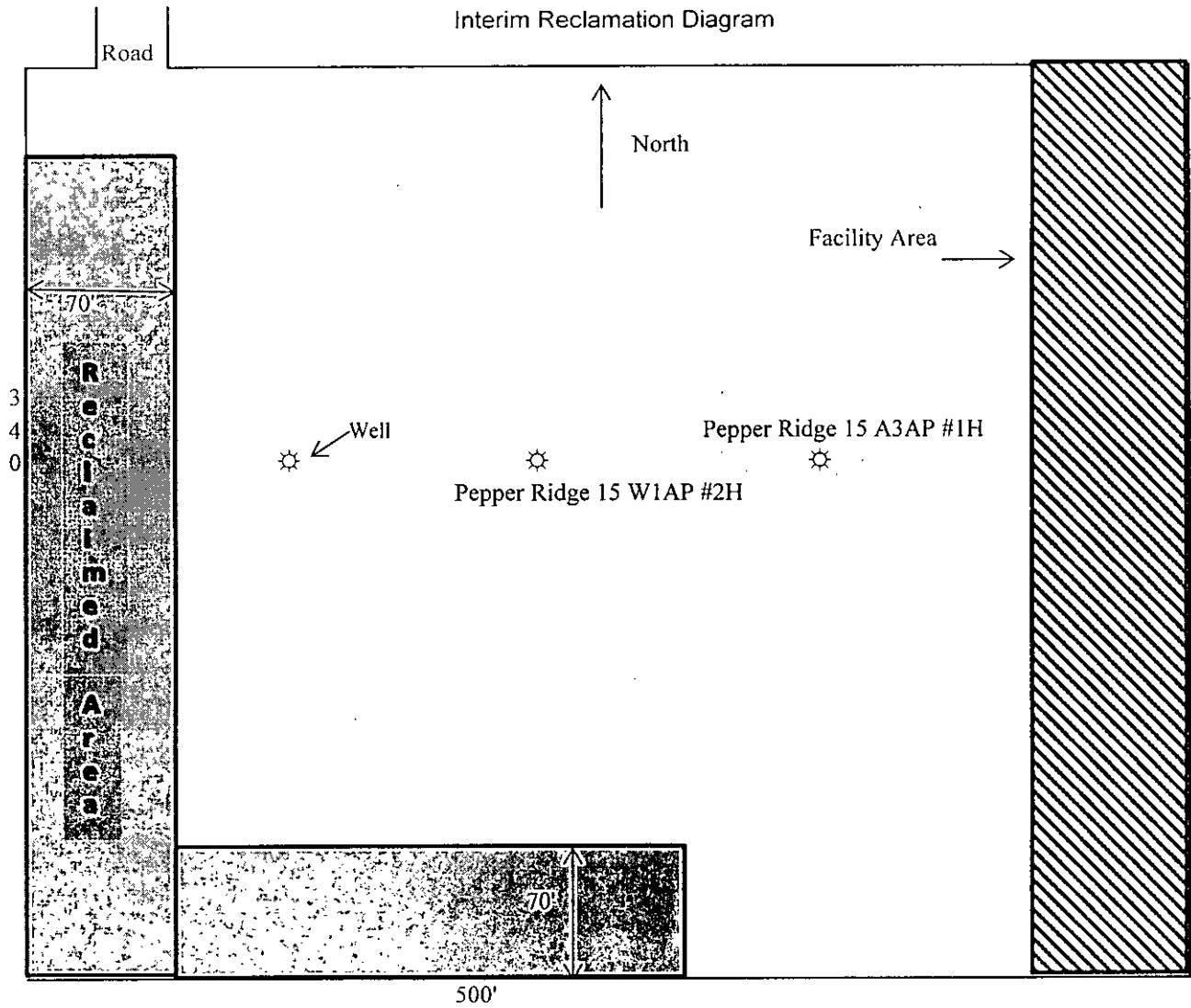


= H2S Monitors



= Safety Stations

# Interim Reclamation Diagram



Mewbourne Oil Company  
Pepper Ridge 15 B2AP Fed Com #3H  
185' FNL & 660' FEL  
Sec 15 T26S R33E  
Lea County, NM