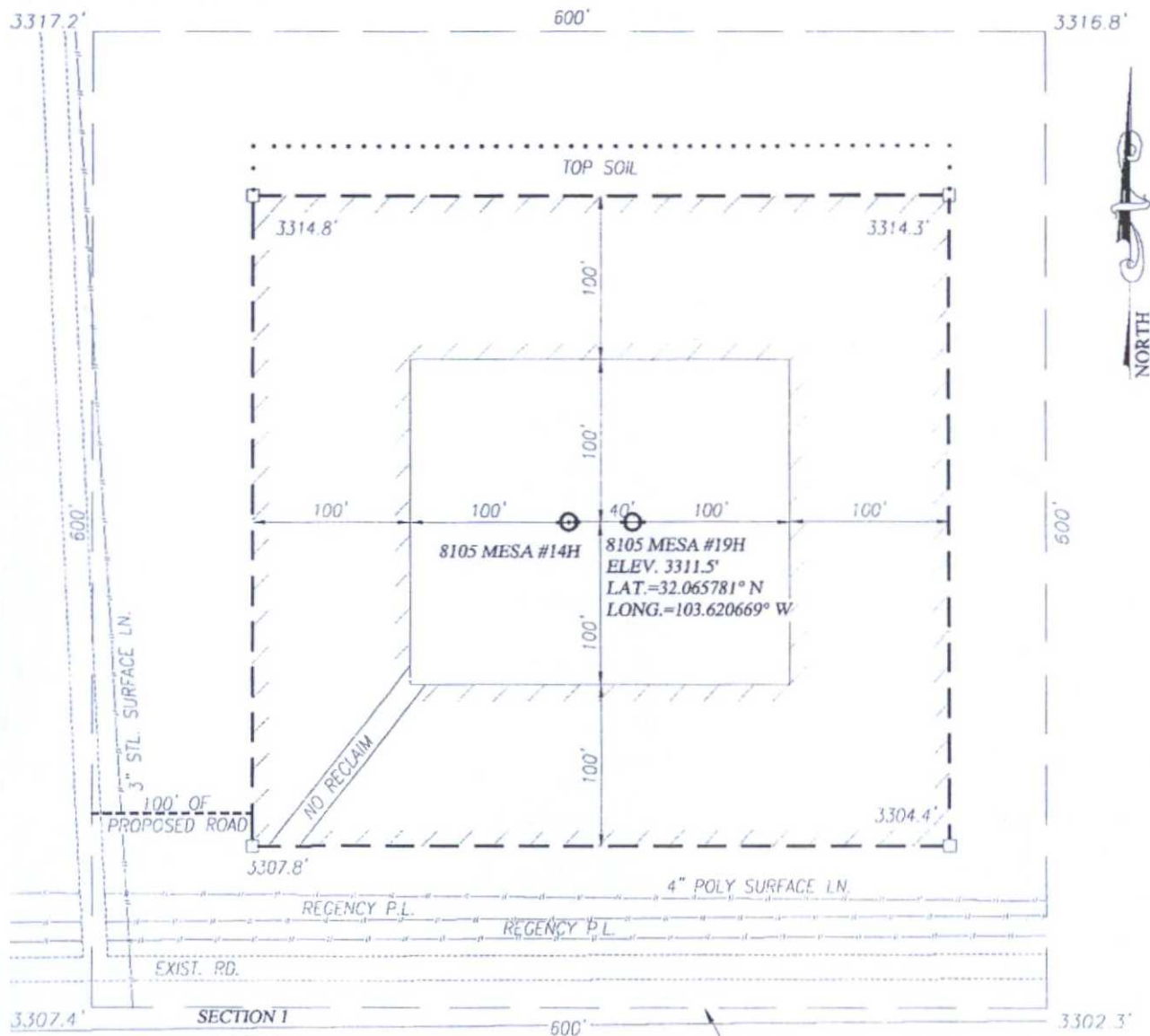


OCT 09 2015

BTA Oil Producers, LLC  
 Mesa 8105 JV-P #19H  
 Location Plat - Interim Reclamation  
 & Gas line  
 Sec 1, T26S, R32E  
 Lea County, NM

COPY



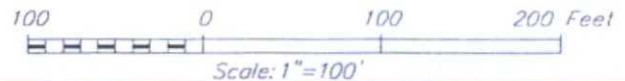
NOTE:  
 1) SEE "LOCATION VERIFICATION MAP"  
 FOR PROPOSED ROAD LOCATION.

ARCHEOLOGICAL SURVEY BOUNDARY

//// DENOTES AREA TO BE RECLAIMED

DIRECTIONS TO 8105 MESA #19H:

FROM THE INTERSECTION OF HWY 18 AND HWY. 128 (JAL N.M.)  
 GO WEST ON HWY 128 APPROX. 29.2 MILES TURN LEFT AND  
 GO SOUTH ON CO. RD. J1 (ORLA RD.) APPROX 10.4 MILES  
 TURN LEFT AND GO EAST APPROX. 3.1 MILES TURN LEFT AND  
 GO NORTH 100' TO STAKED ROAD, FOLLOW STAKES EAST 100'  
 TO THE LOCATION.



**BTA OIL PRODUCERS, LLC**

**8105 MESA #19H WELL**  
 LOCATED 310 FEET FROM THE SOUTH LINE  
 AND 410 FEET FROM THE EAST LINE OF SECTION 1,  
 TOWNSHIP 26 SOUTH, RANGE 32 EAST, N.M.P.M.,  
 LEA COUNTY, NEW MEXICO



PROVIDING SURVEYING SERVICES  
 SINCE 1946  
**JOHN WEST SURVEYING COMPANY**  
 412 N. DAL PASO HOBBS, N.M. 88240  
 (575) 393-3117 www.jwsc.biz  
 TBPLS# 10021000

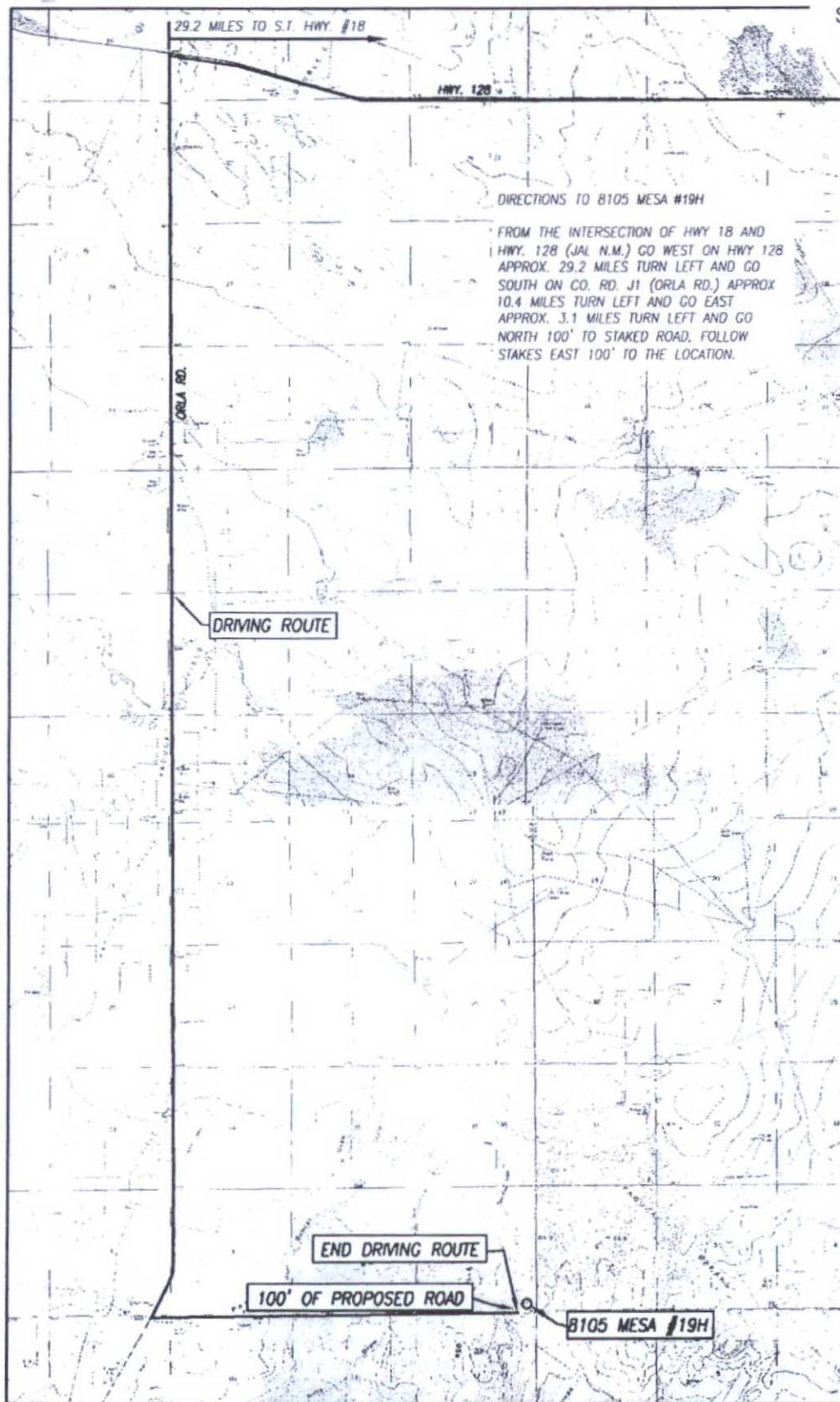
Survey Date: 8/18/14	CAD Date: 8/27/14	Drawn By: LSL
W.O. No.: 14110834	Rev: .	Rel. W.O.: Sheet 1 of 1



# COPY

## LOCATION VERIFICATION MAP

Attachment to APD  
BTA Oil Producers, LLC  
Mesa 8105 JV-P #19H  
Sec 1, T26S, R32E  
Lea County, NM



SEC. 1 TWP. 26-S RGE. 32-E  
COUNTY LEA STATE NEW MEXICO  
DESCRIPTION 310' FSL & 410' FEL  
ELEVATION 3311'  
OPERATOR BTA OIL PRODUCERS, LLC  
LEASE 8105 MESA  
U.S.G.S. TOPOGRAPHIC MAP  
PADUCA BREAKS WEST, N.M. SURVEY N.M.P.M.

SCALE: 1" = 5280'

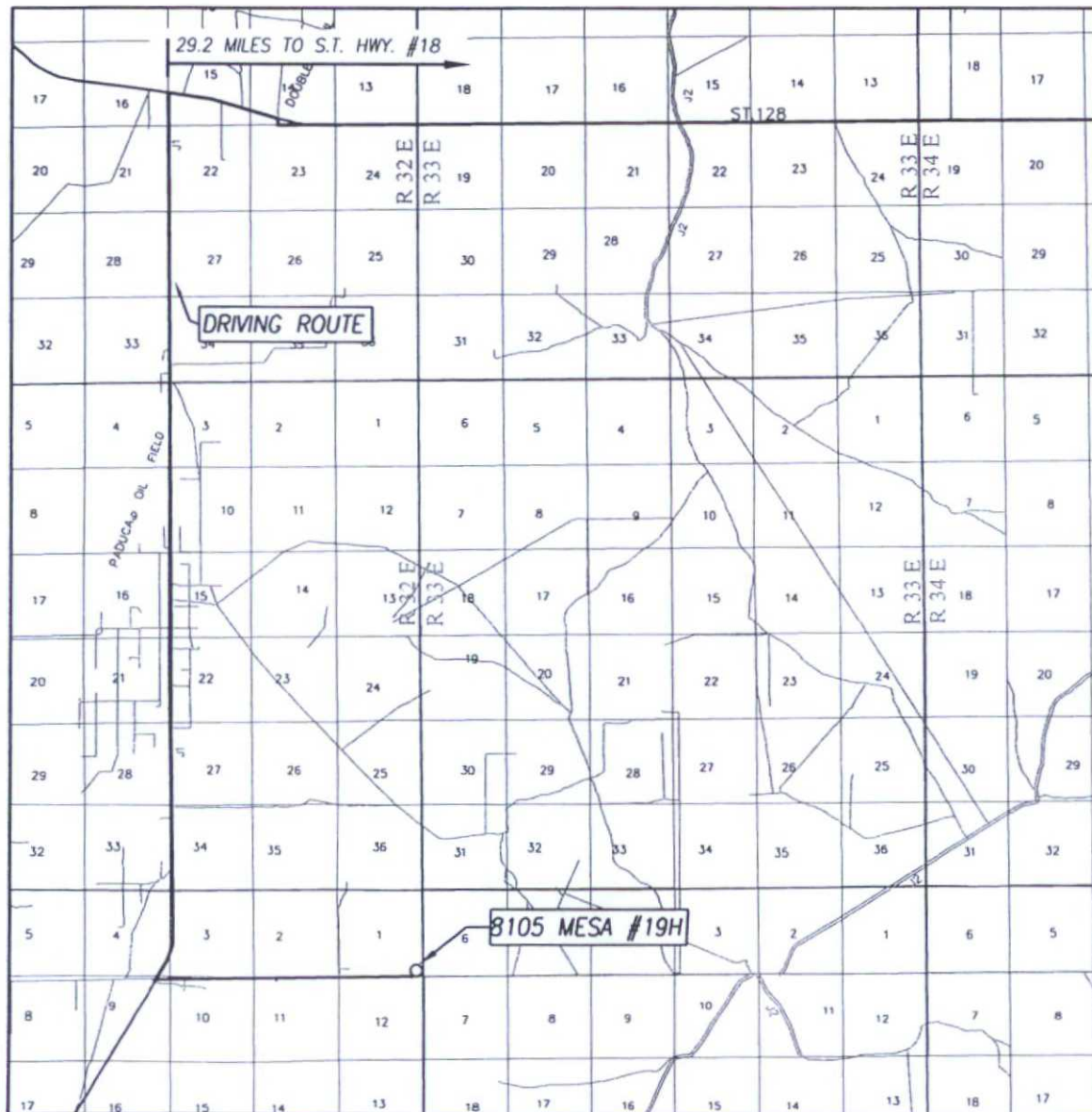
CONTOUR INTERVAL:  
PADUCA BREAKS WEST, N.M. - 10'  
PADUCA BREAKS NW, N.M. - 10'

PROVIDING SURVEYING SERVICES  
SINCE 1946  
**JOHN WEST SURVEYING COMPANY**  
412 N. DAL PASO HOBBES, N.M. 88240  
(575) 393-3117 [www.jwsc.biz](http://www.jwsc.biz)  
TBPLS# 10021000

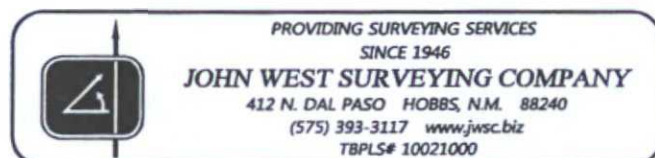
COPY

## VICINITY MAP

Attachment to APD  
BTA Oil Producers, LLC  
Mesa 8105 JV-P #19H  
Sec 1, T26S, R32E  
Lea County, NM



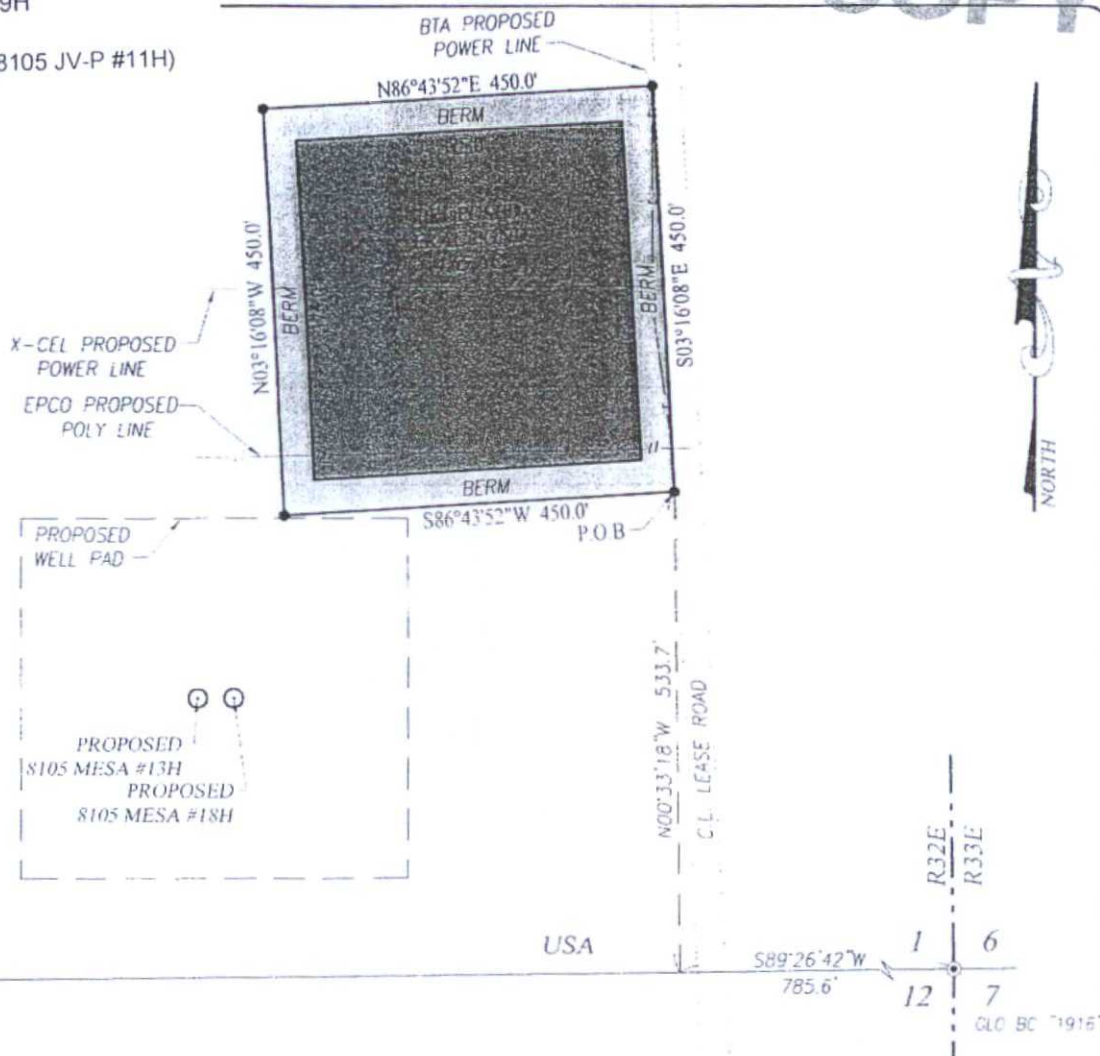
SEC. 1 TWP. 26-S RGE. 32-E  
SURVEY N.M.P.M.  
COUNTY LEA STATE NEW MEXICO  
DESCRIPTION 310' FSL & 410' FEL  
ELEVATION 3311'  
OPERATOR BTA OIL PRODUCERS, LLC  
LEASE 8105 MESA





BTA Oil Producers, LLC  
Mesa 8105 JV-P #19H  
Frac Pond  
(permitted with Mesa 8105 JV-P #11H)  
Sec 1, T26S, R32E  
Lea County, NM

COPY



# LEGEND

- DENOTES SET CORNER AS NOTED
- ⊙ DENOTES FOUND CORNER AS NOTED

# NOTE

BEARINGS SHOWN HEREON ARE MERCATOR GRID AND CONFORM TO THE NEW MEXICO COORDINATE SYSTEM "NEW MEXICO EAST ZONE" NORTH AMERICAN DATUM 1983. DISTANCES ARE SURFACE VALUES.

I, RONALD J. EIDSON, NEW MEXICO PROFESSIONAL SURVEYOR No. 3239, DO HEREBY CERTIFY THAT THIS SURVEY PLAT AND THE ACTUAL SURVEY ON THE GROUND UPON WHICH IT IS BASED WERE PERFORMED BY ME OR UNDER MY DIRECT SUPERVISION; THAT I AM RESPONSIBLE FOR THIS SURVEY; THAT THIS SURVEY MEETS THE MINIMUM STANDARDS FOR SURVEYING IN NEW MEXICO; AND THAT IT IS TRUE AND CORRECT TO THE BEST OF MY KNOWLEDGE AND BELIEF.

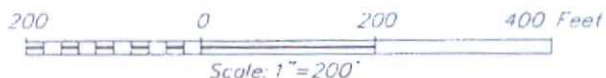
RONALD J. EIDSON

DATE: 01/23/2015

# DESCRIPTION:

A TRACT FOR A FRAC POND SITUATED IN THE SOUTHEAST QUARTER OF SECTION 1, TOWNSHIP 26 SOUTH, RANGE 32 EAST, N.M.P.M., LEA COUNTY, NEW MEXICO AND BEING MORE PARTICULARLY DESCRIBED AS FOLLOWS.

BEGINNING AT THE SOUTHEAST CORNER OF THIS TRACT WHICH LIES S89°26'42"W 785.6 FEET AND N00°33'18"W 533.7 FEET FROM THE SOUTHEAST CORNER; THEN S86°43'52"W 450.0 FEET; THEN N03°16'08"W 450.0 FEET; THEN N86°43'52"E 450.0 FEET; THEN S03°16'08"E 450.0 FEET TO THE POINT OF BEGINNING AND CONTAINING 4.65 ACRES MORE OR LESS.



BTA OIL PRODUCERS, LLC

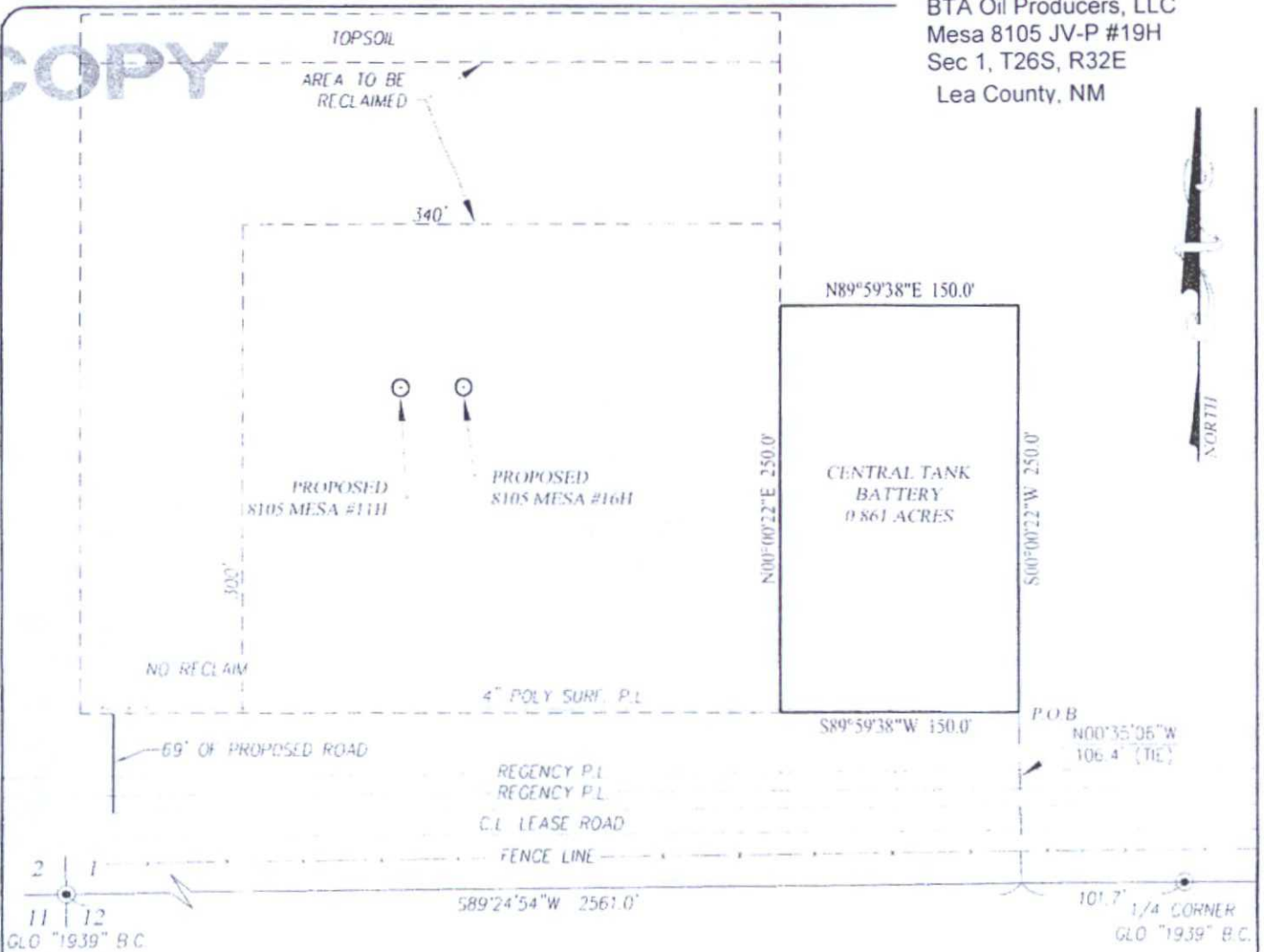
SURVEY FOR A FRAC POND TRACT  
SITUATED IN THE SE/4 OF SECTION 1,  
TOWNSHIP 26 SOUTH, RANGE 32 EAST, N.M.P.M.  
LEA COUNTY, NEW MEXICO



PROVIDING SURVEYING SERVICES  
SINCE 1946  
**JOHN WEST SURVEYING COMPANY**  
412 N. DAL PASO HOBBS, N.M. 88240  
(575) 393-3117 www.jwsc.biz  
TBPLS# 10021000

Survey Date: 1/16/15	CAD Date: 1/22/15	Drawn By: ACK
W.O. No.: 15110029	Rev: .	Rel. W.O.: 14111113
		Sheet 1 of 1

COPY



### LEGEND

- DENOTES FOUND CORNER AS NOTED

### NOTE

BEARINGS SHOWN HEREON ARE MERCATOR GRID AND CONFORM TO THE NEW MEXICO COORDINATE SYSTEM "NEW MEXICO EAST ZONE" NORTH AMERICAN DATUM 1983 DISTANCES ARE SURFACE VALUES

I, RONALD J. EIDSON, NEW MEXICO PROFESSIONAL SURVEYOR No. 3239, DO HEREBY CERTIFY THAT THIS SURVEY PLAT AND THE ACTUAL SURVEY ON THE GROUND UPON WHICH IT IS BASED WERE PERFORMED BY ME OR UNDER MY DIRECT SUPERVISION; THAT I AM RESPONSIBLE FOR THIS SURVEY; THAT THIS SURVEY MEETS THE MINIMUM STANDARDS FOR SURVEYING IN NEW MEXICO; AND THAT IT IS TRUE AND CORRECT TO THE BEST OF MY KNOWLEDGE AND BELIEF.

RONALD J. EIDSON *Ronald J. Eidson*

DATE: *08/26/2014*



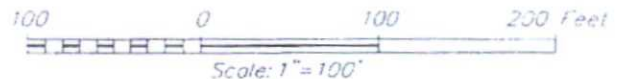
PROVIDING SURVEYING SERVICES  
SINCE 1946  
**JOHN WEST SURVEYING COMPANY**

412 N. DAL PASO HOBBS, N.M. 88240  
(575) 393-3117 www.jwsc.biz  
TBPLS# 10021000

### DESCRIPTION:

A PROPOSED TANK BATTERY TRACT SITUATED IN THE SOUTHWEST QUARTER OF SECTION 1, TOWNSHIP 26 SOUTH, RANGE 32 EAST, N.M.P.M., LEA COUNTY, NEW MEXICO AND BEING MORE PARTICULARLY DESCRIBED AS FOLLOWS:

BEGINNING AT THE SOUTHEAST CORNER OF THIS TRACT WHICH LIES S89°24'54"W 101.7 FEET AND N00°35'06"W 106.4 FEET FROM THE SOUTH 1/4 CORNER; THEN S89°59'38"W 150.0 FEET; THEN N00°00'22"E 250.0 FEET; THEN N89°59'38"E 150.0 FEET; THEN S00°00'22"W 250.0 FEET TO THE POINT OF BEGINNING AND CONTAINING 0.861 ACRES MORE OR LESS.



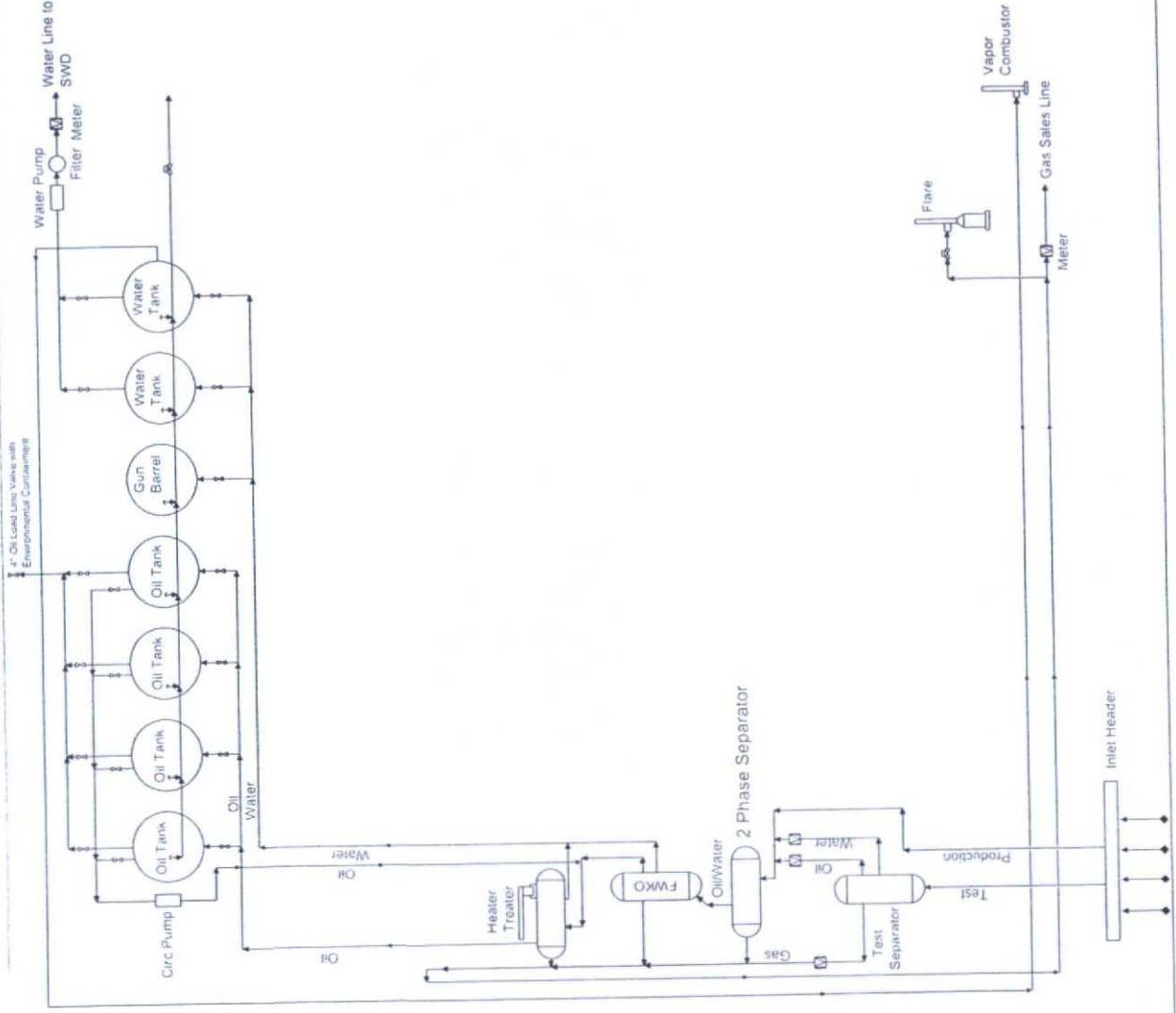
## BTA OIL PRODUCERS, LLC

SURVEY FOR THE 8105 MESA CENTRAL TANK  
BATTERY SITE IN THE SW/4 OF SECTION 1,  
TOWNSHIP 26 SOUTH, RANGE 32 EAST, N.M.P.M.  
LEA COUNTY, NEW MEXICO

Survey Date: 8/16/14	CAD Date: 8/22/14	Drawn By: ACK
W.O. No.: 14110872	Rev:	Rel. W.O.:
Sheet 1 of 1		

COPY

BTA Oil Producers, LLC  
Mesa 8105 JV-P #19H  
Proposed Central Tank Battery  
Sec 1, T26S, R32E  
Lea County, NM



NOT TO SCALE

BTA Oil Producers, LLC

-Proposed-  
Production Facilities Diagram

Mesa 8105 JV-P  
Section 1, T26S-R32E  
Lea County, NM



COPY

BTA Oil Producers, LLC  
Mesa 8105 JV-P #19H  
1 Mile Radius Map  
Sec 1, T26S, R32E  
Lea County, NM



BTA Oil Producers, LLC

8105 JV-P Mesa #19H - 1 Mile Radius Map

SHL: 310'FSL & 410'FEL Sec.1, T26S, R32E

BHL: 230'FNL & 410'FEL Sec.1, T26S, R32E

Lea County, New Mexico

- WELL SYMBOLS
- ★ Proposed Location
  - Location Only
  - Drilling Well
  - Drilled, Waiting on Completion
  - Oil Well
  - Gas Well
  - Dry Hole
  - Dry Hole With Oil & Gas Show
  - Pilot Hole

REMARKS

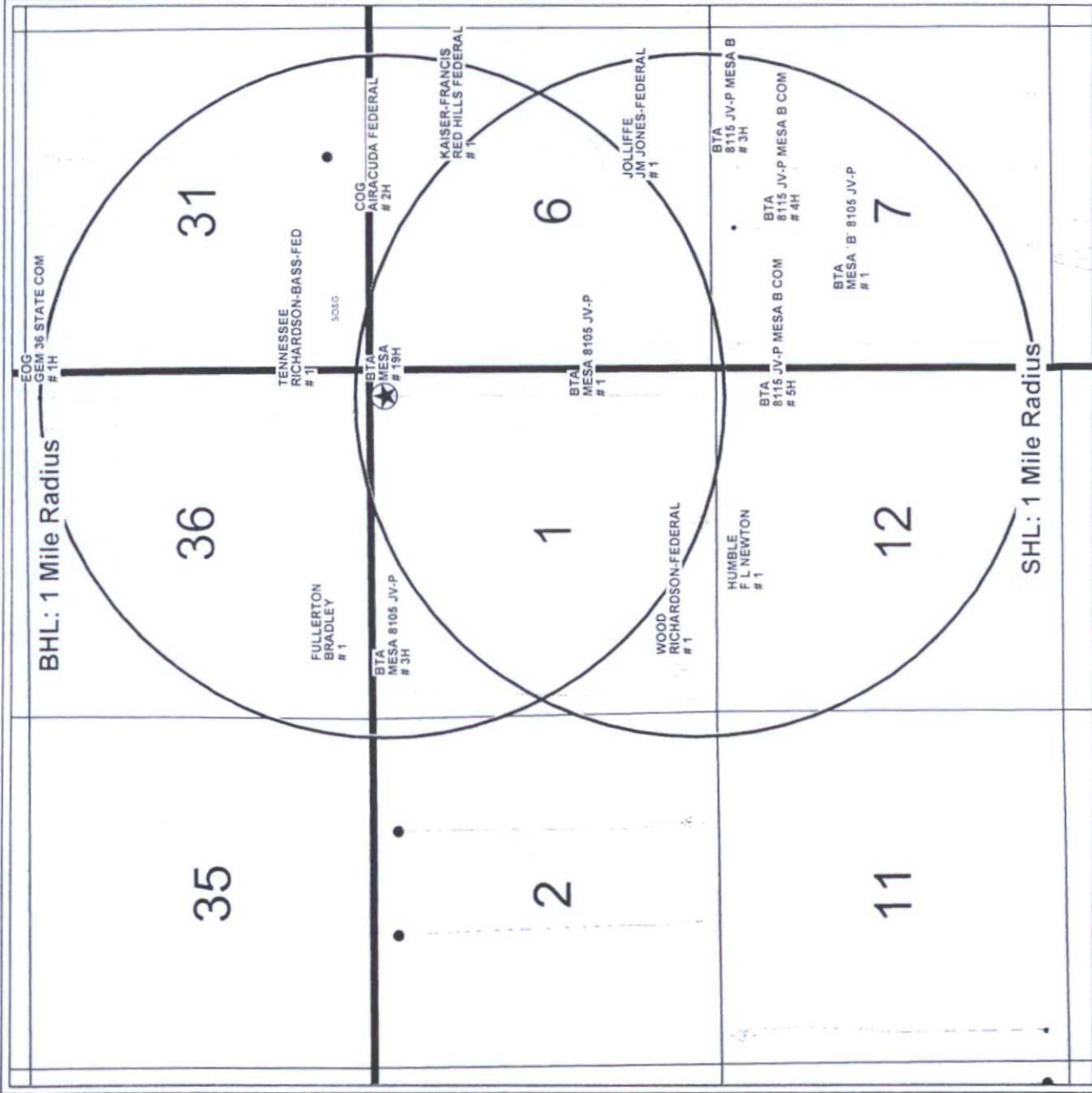
8105 JV-P Mesa #19H Bottom Hole Location  
Highlighted in Yellow

Only Wells Inside a Mile Radius of Surface &  
Bottom Hole Locations Labeled

By: JHB



February 16, 2015





COPY

# 8105 Mesa Plan of Development

## Proposed Flowlines

