

District I  
1625 N. French Dr., Hobbs, NM 88240  
Phone: (575) 393-6161 Fax: (575) 393-0720  
District II  
811 S. First St., Artesia, NM 88210  
Phone: (575) 748-1283 Fax: (575) 748-9720  
District III  
1000 Rio Brazos Road, Aztec, NM 87410  
Phone: (505) 334-6178 Fax: (505) 334-6170  
District IV  
1220 S. St. Francis Dr., Santa Fe, NM 87505  
Phone: (505) 476-3460 Fax: (505) 476-3462

State of New Mexico  
Energy, Minerals & Natural Resources  
Department  
OIL CONSERVATION DIVISION  
1220 South St. Francis Dr.  
Santa Fe, NM 87505

HOBBS OGD

OCT 13 2015

RECEIVED

FORM C-102

Revised August 1, 2011

Submit one copy to appropriate

District Office

☐ AMENDED REPORT

WELL LOCATION AND ACREAGE DEDICATION PLAT

<sup>1</sup> API Number 30-025- <b>42866</b>	<sup>2</sup> Pool Code 97900	<sup>3</sup> Pool Name Red Hills; Upper Bone Spring Shale
<sup>4</sup> Property Code	<sup>5</sup> Property Name <b>STREETCAR 15 FED</b>	<sup>6</sup> Well Number <b>#10H</b>
<sup>7</sup> GRID No. 7377	<sup>8</sup> Operator Name <b>EOG RESOURCES, INC.</b>	<sup>9</sup> Elevation <b>3351'</b>

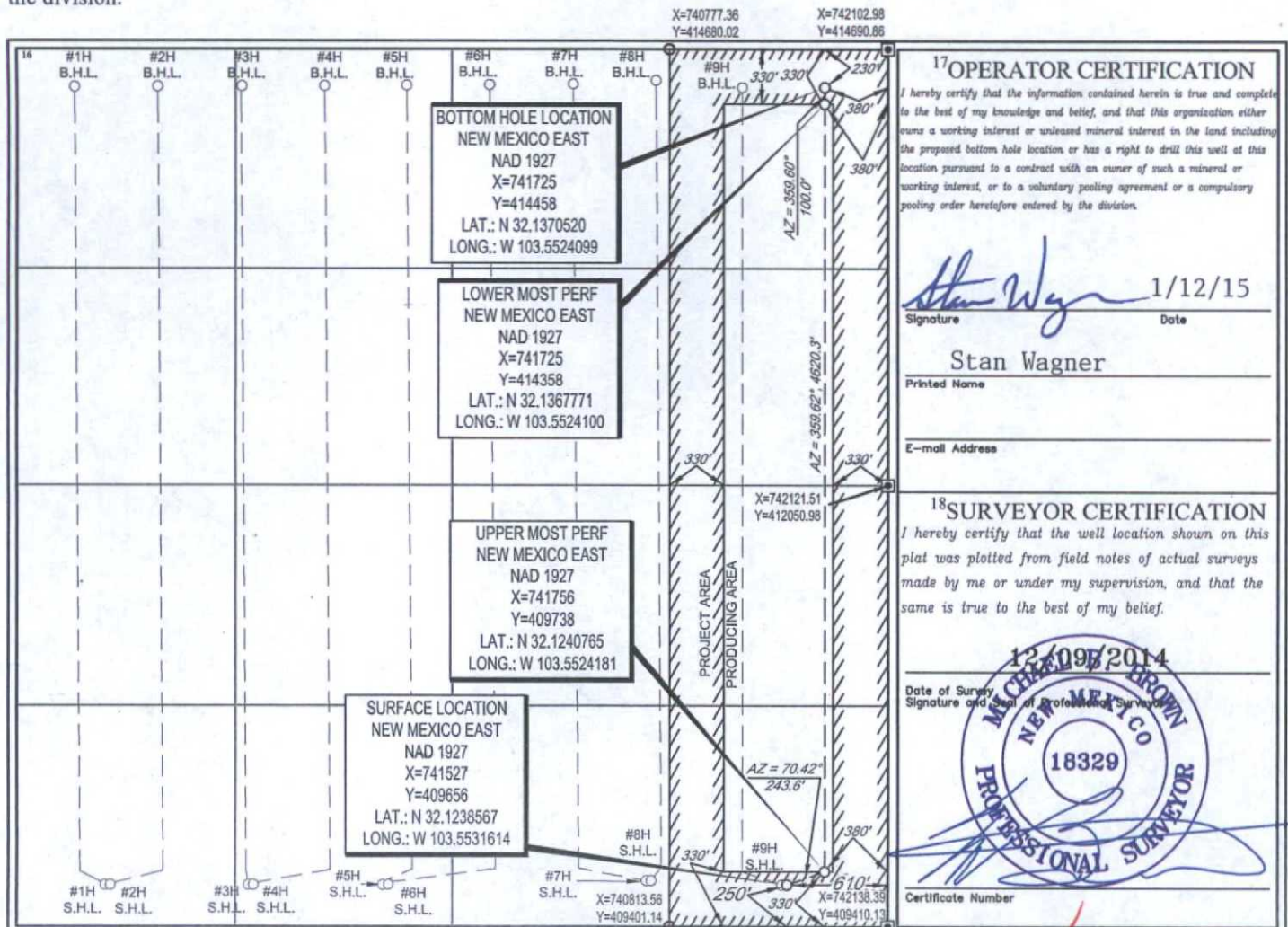
<sup>10</sup>Surface Location

UL or lot no.	Section	Township	Range	Lot Idn	Feet from the	North/South line	Feet from the	East/West line	County
P	15	25-S	33-E	-	250'	SOUTH	610'	EAST	LEA

UL or lot no.	Section	Township	Range	Lot Idn	Feet from the	North/South line	Feet from the	East/West line	County
A	15	25-S	33-E	-	230'	NORTH	380'	EAST	LEA

<sup>12</sup> Dedicated Acres <b>160.00</b>	<sup>13</sup> Joint or Infill	<sup>14</sup> Consolidation Code	<sup>15</sup> Order No.
--	-------------------------------	----------------------------------	-------------------------

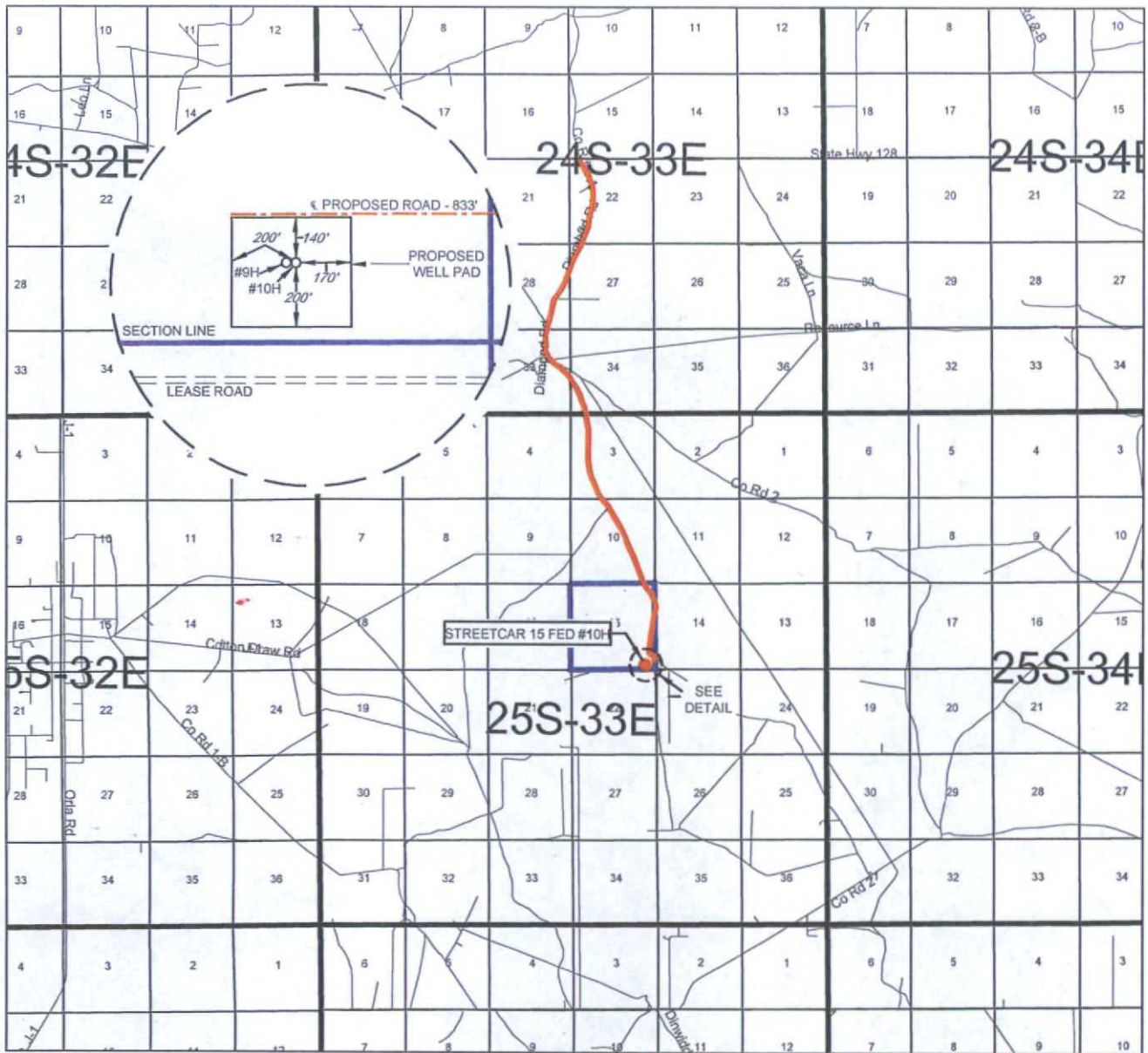
No allowable will be assigned to this completion until all interests have been consolidated or a non-standard unit has been approved by the division.



OCT 15 2015



# EXHIBIT 2 VICINITY MAP



LEASE NAME & WELL NO.: STREETCAR 15 FED #10H

SECTION 15 TWP 25-S RGE 33-E SURVEY N.M.P.M.

COUNTY LEA STATE NM

DESCRIPTION 250' FSL & 610' FEL

## DISTANCE & DIRECTION

FROM INT. OF NM-18 N & NM-128, GO WEST ON NM-128 W ±23.9 MILES, THENCE SOUTH (LEFT) ON DIAMOND RD./J-2 ±2.5 MILES, THENCE SOUTHEAST (LEFT) ON CR. 2 ±0.2 MILE, THENCE SOUTH (RIGHT) ON LEASE RD. ±2.8 MILES, THENCE SOUTH (RIGHT) ±305 FEET ON LEASE RD., THENCE WEST (RIGHT) ON PROPOSED RD. 833 FEET TO A POINT NORTH OF THE LOCATION.

THIS EASEMENT/SERVITUDE LOCATION SHOWN HEREON HAS BEEN SURVEYED ON THE GROUND UNDER MY SUPERVISION AND PREPARED ACCORDING TO THE EVIDENCE FOUND AT THE TIME OF SURVEY, AND DATA PROVIDED BY EOG RESOURCES, INC. THIS CERTIFICATION IS MADE AND LIMITED TO THOSE PERSONS OR ENTITIES SHOWN ON THE FACE OF THIS PLAT AND IS NON-TRANSFERABLE. THIS SURVEY IS CERTIFIED FOR THIS TRANSACTION ONLY.

ALL BEARINGS, DISTANCES, AND COORDINATE VALUES CONTAINED HEREON ARE GRID BASED UPON THE NEW MEXICO STATE PLANE COORDINATE SYSTEM, EAST ZONE OF THE NORTH AMERICAN DATUM 1927, U.S. SURVEY FEET.



SCALE: 1" = 10000'  
0' 5000' 10000'



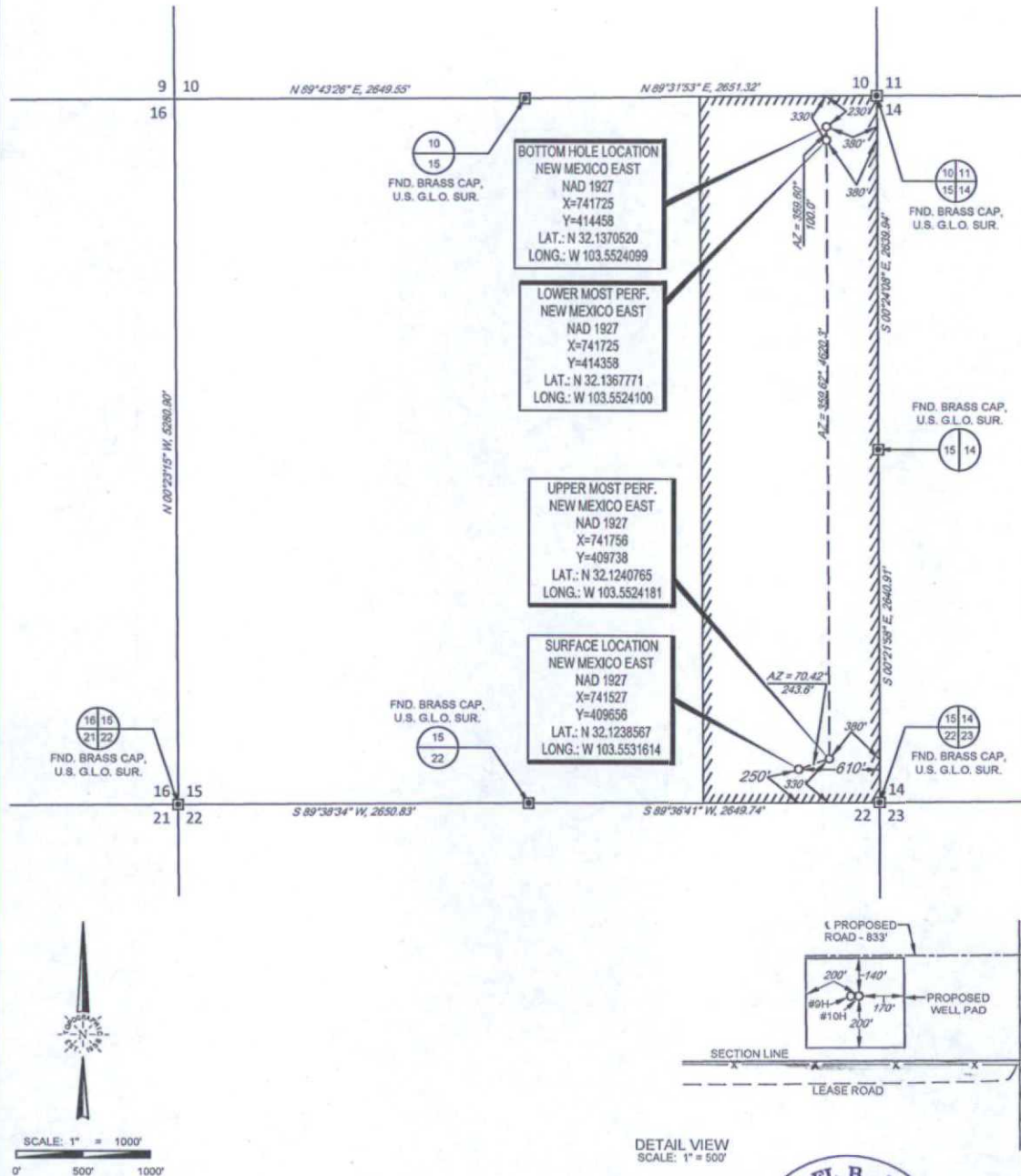
**TOPOGRAPHIC**  
LOYALTY INNOVATION LEGACY

1400 EVERMAN PARKWAY, Ste. 197 • FT. WORTH, TEXAS 76140  
TELEPHONE: (817) 744-7512 • FAX (817) 744-7548  
2903 NORTH BIG SPRING • MIDLAND, TEXAS 79705  
TELEPHONE: (432) 682-1653 OR (800) 767-1653 • FAX (432) 682-1743  
WWW.TOPOGRAPHIC.COM



## EXHIBIT 2A

SECTION 15, TOWNSHIP 25-S, RANGE 33-E, N.M.P.M.  
LEA COUNTY, NEW MEXICO



LEASE NAME & WELL NO.: STREETCAR 15 FED #10H

SECTION 15 TWP 25-S RGE 33-E SURVEY N.M.P.M.  
COUNTY LEA STATE NM  
DESCRIPTION 250' FSL & 610' FEL

**DISTANCE & DIRECTION**  
FROM INT. OF NM-18 N & NM-128, GO WEST ON NM-128 W ±23.9 MILES,  
THENCE SOUTH (LEFT) ON DIAMOND RD./J-2 ±2.5 MILES, THENCE  
SOUTHEAST (LEFT) ON CR. 2 ±0.2 MILE, THENCE SOUTH (RIGHT) ON  
LEASE RD. ±2.8 MILES, THENCE SOUTH (RIGHT) ±305 FEET ON LEASE  
RD., THENCE WEST (RIGHT) ON PROPOSED RD. 833 FEET TO A POINT  
NORTH OF THE LOCATION.

ALL BEARINGS, DISTANCES, AND COORDINATE VALUES CONTAINED HEREON ARE GRID  
BASED UPON THE NEW MEXICO STATE PLANE COORDINATE SYSTEM, EAST ZONE OF THE  
NORTH AMERICAN DATUM 1927, U.S. SURVEY FEET

THIS EASEMENT/SERVITUDE LOCATION SHOWN HEREON HAS BEEN SURVEYED ON THE GROUND  
UNDER MY SUPERVISION AND PREPARED ACCORDING TO THE EVIDENCE FOUND AT THE TIME OF  
SURVEY, AND DATA PROVIDED BY EOG RESOURCES, INC. THIS CERTIFICATION IS MADE AND LIMITED  
TO THOSE PERSONS OR ENTITIES SHOWN ON THE FACE OF THIS PLAT AND IS NON-TRANSFERABLE.  
THIS SURVEY IS CERTIFIED FOR THIS TRANSACTION ONLY.



Michael Blake Brown, P.S. No. 18329  
JANUARY 8, 2015

**TOPOGRAPHIC**  
LOYALTY INNOVATION LEGACY  
1400 EVERMAN PARKWAY, Ste. 197 • FT. WORTH, TEXAS 76140  
TELEPHONE: (817) 744-7517 • FAX: (817) 744-7548  
2903 NORTH BIS SPRING • MIDLAND, TEXAS 79705  
TELEPHONE: (432) 652-1053 OR (802) 767-1653 • FAX: (432) 653-1743  
WWW.TOPOGRAPHIC.COM



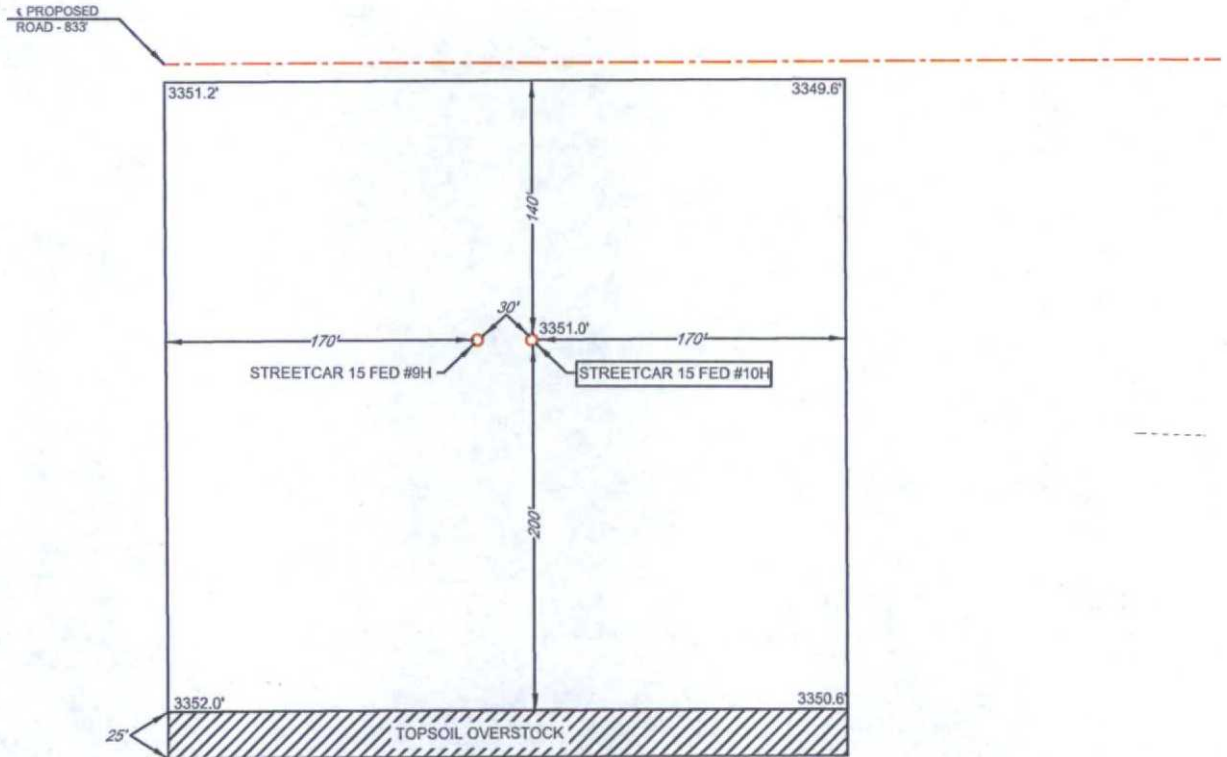


# EXHIBIT 2B

**EOG resources, Inc.**

SECTION 15, TOWNSHIP 25-S, RANGE 33-E, N.M.P.M.  
LEA COUNTY, NEW MEXICO

DETAIL VIEW  
SCALE: 1" = 100'



LEASE NAME & WELL NO.: STREETCAR 15 FED #10H  
#10H LATITUDE N 32.1238567 #10H LONGITUDE W 103.5531614

## LEGEND

--- PROPOSED ROAD  
— SECTION LINE



SCALE: 1" = 100'  
0' 50' 100'

ALL BEARINGS, DISTANCES, AND COORDINATE VALUES CONTAINED HEREON ARE GRID BASED UPON THE NEW MEXICO STATE PLANE COORDINATE SYSTEM, EAST ZONE OF THE NORTH AMERICAN DATUM 1927, U.S. SURVEY FEET

THIS PROPOSED PAD SITE LOCATION SHOWN HEREON HAS BEEN SURVEYED ON THE GROUND UNDER MY SUPERVISION AND PREPARED ACCORDING TO THE EVIDENCE FOUND AT THE TIME OF SURVEY, AND DATA PROVIDED BY EOG RESOURCES, INC. THIS CERTIFICATION IS MADE AND LIMITED TO THOSE PERSONS OR ENTITIES SHOWN ON THE FACE OF THIS PLAT AND IS NON-TRANSFERABLE. THIS SURVEY IS CERTIFIED FOR THIS TRANSACTION ONLY.



**TOPOGRAPHIC**  
LOYALTY INNOVATION LEGACY

1400 EVERMAN PARKWAY, Ste. 197 • FT. WORTH, TEXAS 76140  
TELEPHONE: (817) 744-7512 • FAX: (817) 744-7548  
2903 NORTH BIG SPRING • MIDLAND, TEXAS 79705  
TELEPHONE: (432) 682-1653 OR (800) 767-1653 • FAX: (432) 682-1743  
WWW.TOPOGRAPHIC.COM

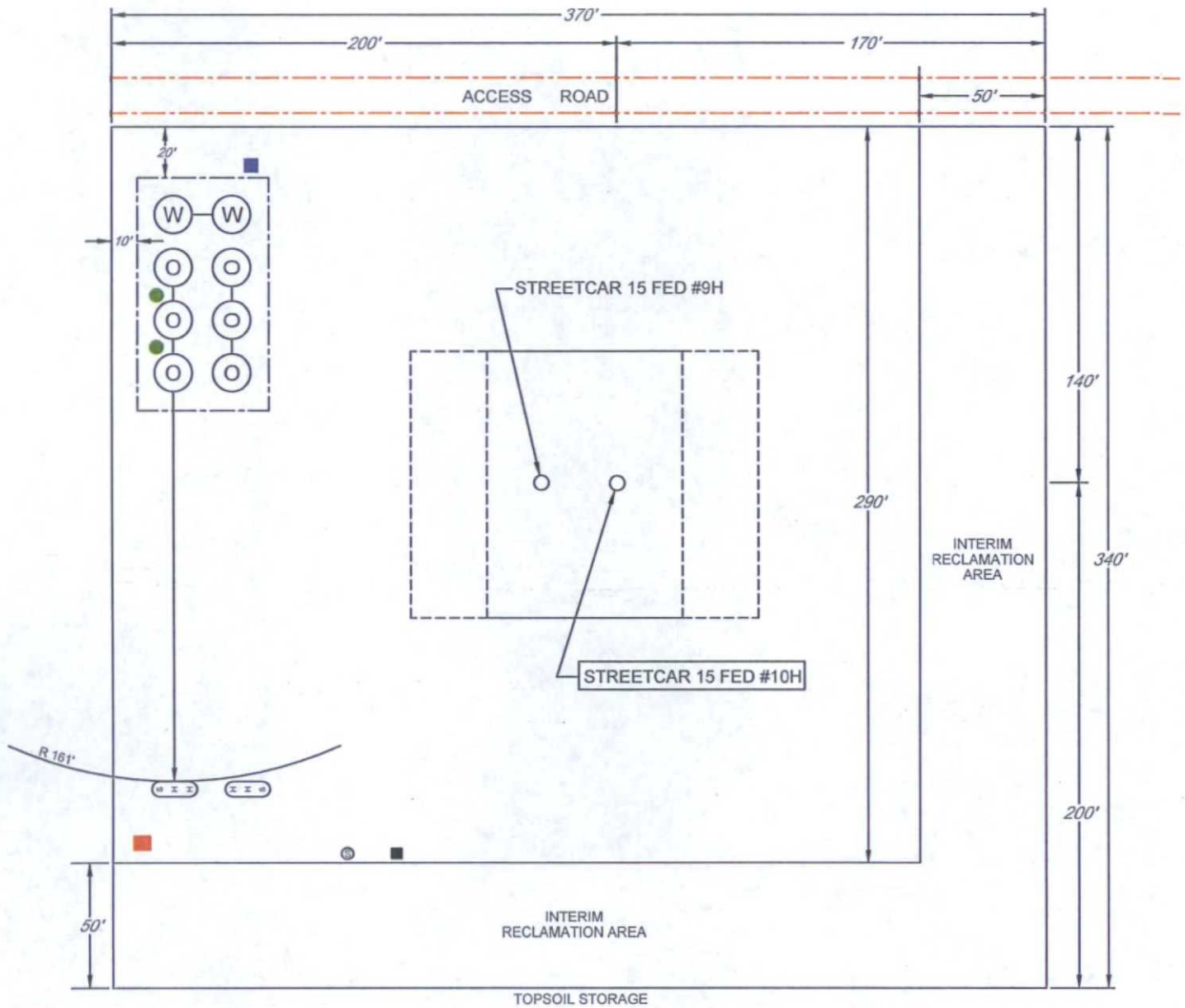
ORIGINAL DOCUMENT SIZE: 8.5" X 11"

# EXHIBIT 2C

## RECLAMATION AND FACILITY DIAGRAM - PRODUCTION FACILITIES DIAGRAM

SECTION 15, TOWNSHIP 25-S, RANGE 33-E, N.M.P.M.  
LEA COUNTY, NEW MEXICO

DETAIL VIEW  
SCALE: 1" = 60'



LEASE NAME & WELL NO.: STREETCAR 15 FED #10H  
#10H LATITUDE N 32.1238567 #10H LONGITUDE W 103.5531614

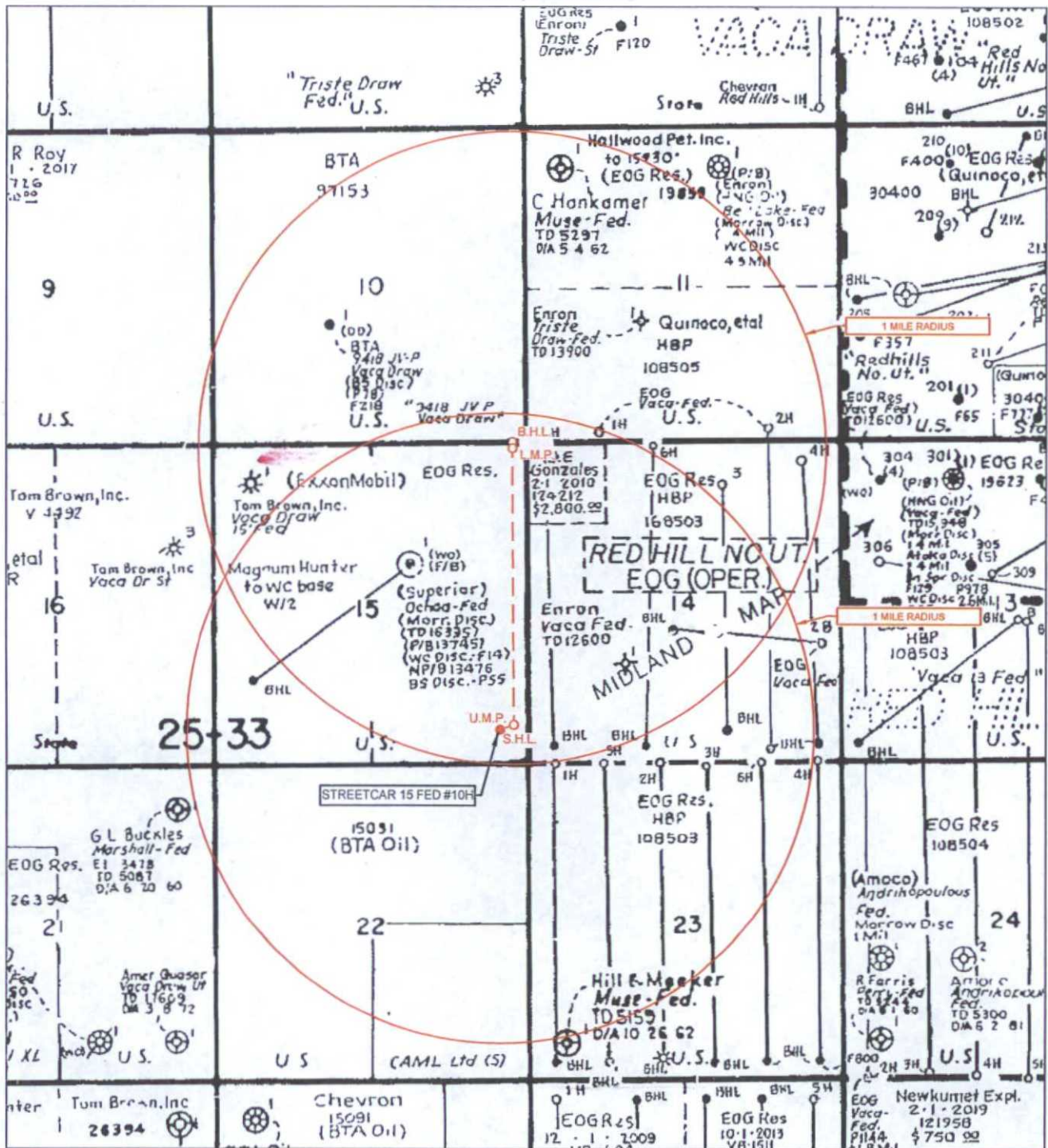
### LEGEND

(O)	500 BBL OIL TANK	(S)	FLARE SEPARATOR
(W)	500 BBL WATER TANK	(FV)	FLARE VALVE
(H)	36 x 15 HEATER/SEPARATOR	(VRU)	VRU
(G)	48 X 25 VRT	(FP)	FP FLARE
(OP)	OP FLARE		



# EXHIBIT 3

SECTION 15, TOWNSHIP 25-S, RANGE 33-E, N.M.P.M.  
LEA COUNTY, NEW MEXICO



LEASE NAME & WELL NO.: STREETCAR 15 FED #10H

SCALE: NTS

#10H LATITUDE N 32.1238567

#10H LONGITUDE W 103.5531614

ALL BEARINGS, DISTANCES, AND COORDINATE VALUES CONTAINED HEREON ARE GRID BASED UPON THE NEW MEXICO STATE PLANE COORDINATE SYSTEM, EAST ZONE OF THE NORTH AMERICAN DATUM 1927, U.S. SURVEY FEET

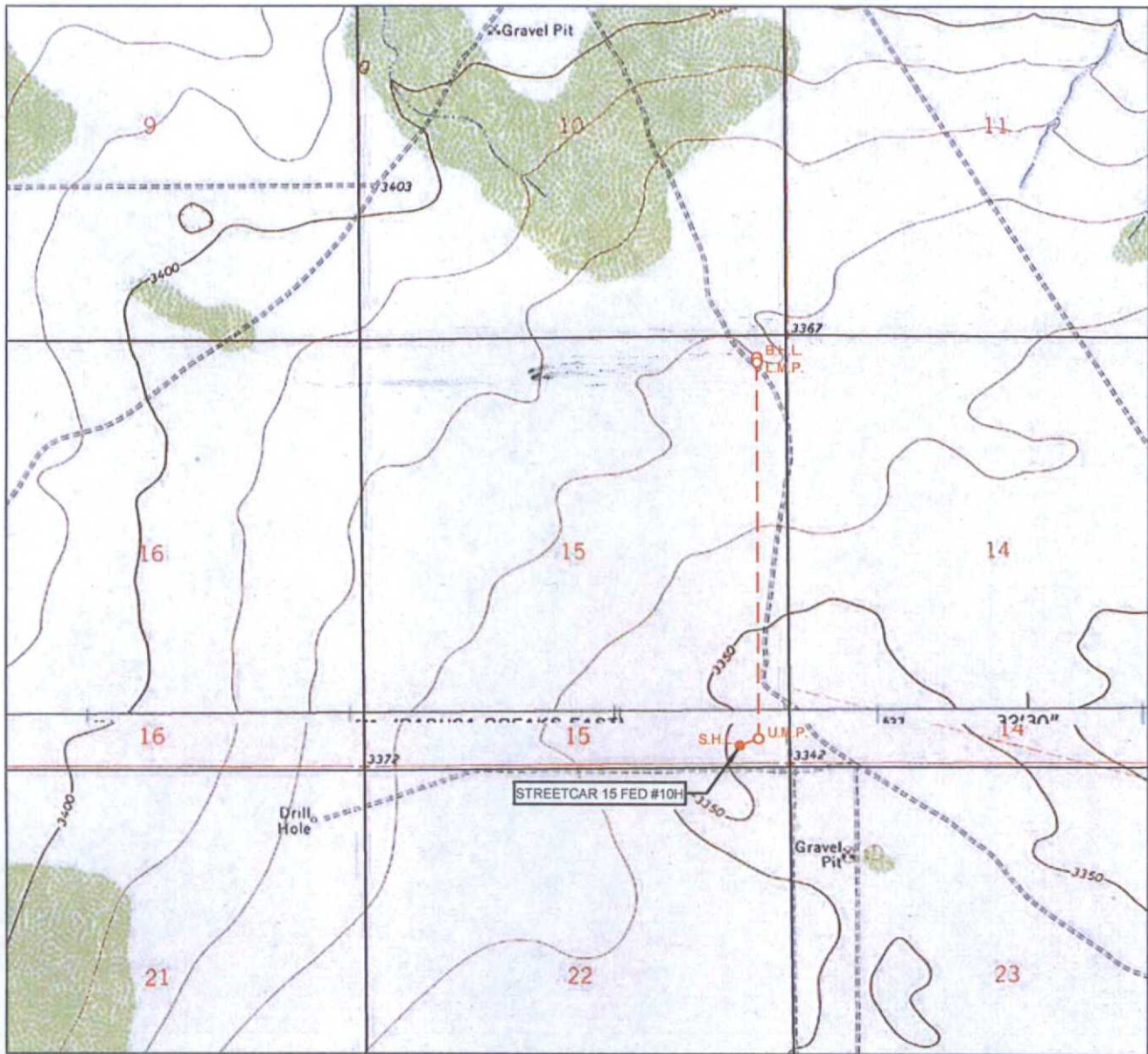
THIS EASEMENT/SERVITUDE LOCATION SHOWN HEREON HAS BEEN SURVEYED ON THE GROUND UNDER MY SUPERVISION AND PREPARED ACCORDING TO THE EVIDENCE FOUND AT THE TIME OF SURVEY, AND DATA PROVIDED BY EOG RESOURCES, INC. THIS CERTIFICATION IS MADE AND LIMITED TO THOSE PERSONS OR ENTITIES SHOWN ON THE FACE OF THIS PLAT AND IS NON-TRANSFERABLE. THIS SURVEY IS CERTIFIED FOR THIS TRANSACTION ONLY.



1400 EVERMAN PARKWAY, Ste. 197 • FT. WORTH, TEXAS 76140  
TELEPHONE: (817) 744-7512 • FAX: (817) 744-7548  
2903 NORTH BIG SPRING • MIDLAND, TEXAS 79705  
TELEPHONE: (432) 682-1653 OR (800) 767-1653 • FAX: (432) 682-1743  
WWW.TOPOGRAPHIC.COM



# LOCATION & ELEVATION VERIFICATION MAP



LEASE NAME & WELL NO.: STREETCAR 15 FED #10H

SECTION 15 TWP 25-S RGE 33-E SURVEY N.M.P.M.  
 COUNTY LEA STATE NM ELEVATION 3351'  
 DESCRIPTION 250' FSL & 610' FEL

LATITUDE N 32.1238567 LONGITUDE W 103.5531614



SCALE: 1" = 2000'  
 0' 1000' 2000'

THIS EASEMENT/SERVITUDE LOCATION SHOWN HEREON HAS BEEN SURVEYED ON THE GROUND UNDER MY SUPERVISION AND PREPARED ACCORDING TO THE EVIDENCE FOUND AT THE TIME OF SURVEY, AND DATA PROVIDED BY EOG RESOURCES, INC. THIS CERTIFICATION IS MADE AND LIMITED TO THOSE PERSONS OR ENTITIES SHOWN ON THE FACE OF THIS PLAT AND IS NON-TRANSFERABLE. THIS SURVEY IS CERTIFIED FOR THIS TRANSACTION ONLY.

ALL BEARINGS, DISTANCES, AND COORDINATE VALUES CONTAINED HEREON ARE GRID BASED UPON THE NEW MEXICO STATE PLANE COORDINATE SYSTEM, EAST ZONE OF THE NORTH AMERICAN DATUM 1927, U.S. SURVEY FEET.



**TOPOGRAPHIC**  
 LOYALTY INNOVATION LEGACY

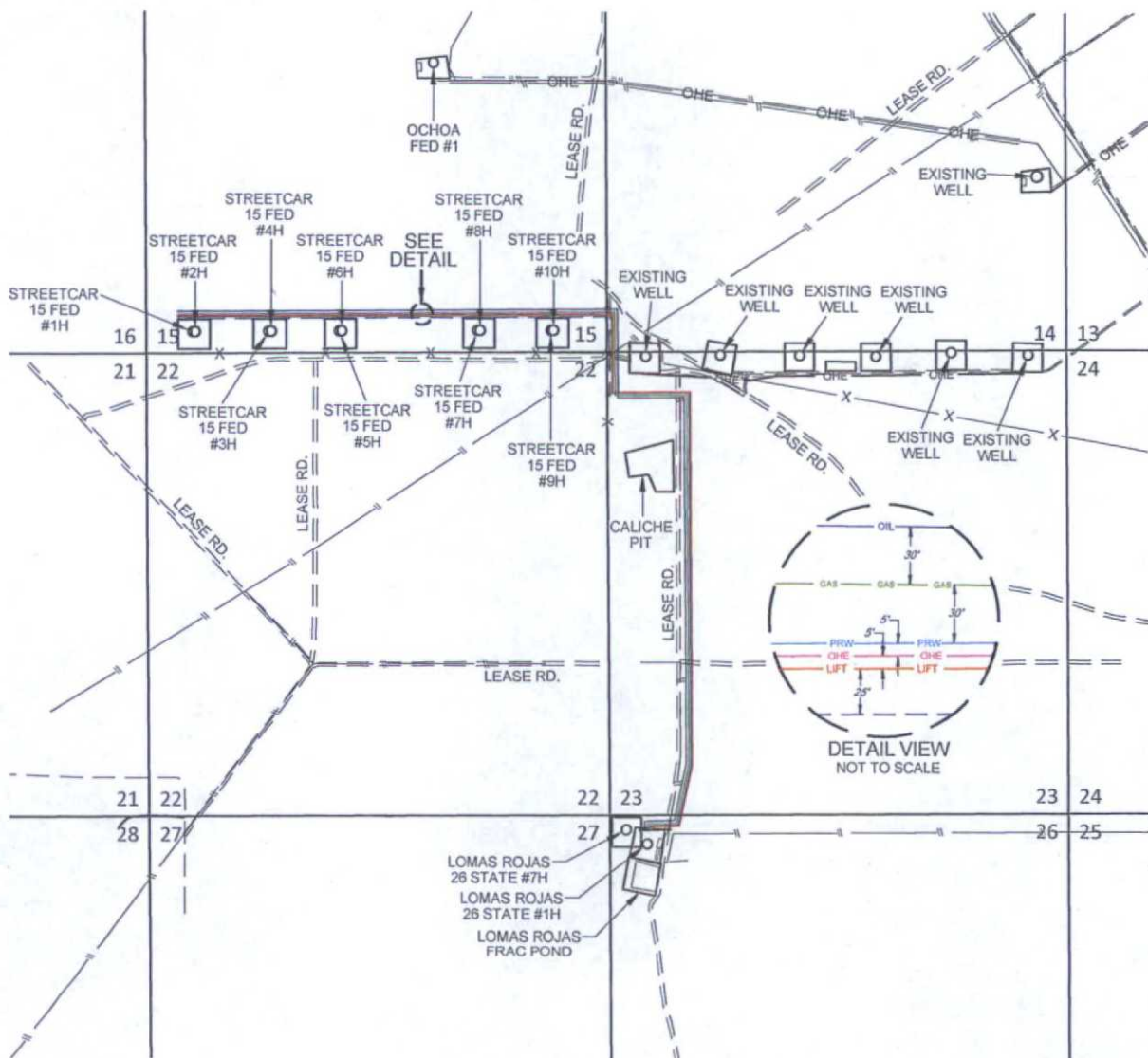
1400 EVERMAN PARKWAY, Ste. 197 • FT. WORTH, TEXAS 76140  
 TELEPHONE: (817) 744-7512 • FAX (817) 744-7548  
 2903 NORTH BIG SPRING • MIDLAND, TEXAS 79705  
 TELEPHONE: (432) 682-1653 OR (800) 767-1653 • FAX (432) 682-1743  
 WWW.TOPOGRAPHIC.COM

SCALE: 1" = 2000'  
0' 1000' 2000'

## EXHIBIT 5

SECTION 14, 15, 23, 26, TOWNSHIP 25-S, RANGE 33-E, N.M.P.M.  
LEA COUNTY, NEW MEXICO

# STREETCAR 15 FED #1H-#10H INFRASTRUCTURE MAP



LEASE RD. -TOTAL FOOTAGE.....4964 FT	OHE	ELECTRIC LINE -TOTAL FOOTAGE.....12089 FT -(WORKING PRESSURE 75-125 PSI)
FROM EXISTING LEASE RD. (SEC. 14) TO STREETCAR 15 FED #1H & #2H.....4964 FT TO STREETCAR 15 FED #3H & #4H.....4094 FT TO STREETCAR 15 FED #5H & #6H.....3279 FT TO STREETCAR 15 FED #7H & #8H.....1673 FT TO STREETCAR 15 FED #9H & #10H.....833 FT		FROM LOMAS ROJAS 26 STATE #1H (SEC. 26) TO STREETCAR 15 FED #1H & #2H.....12089 FT TO STREETCAR 15 FED #3H & #4H.....11219 FT TO STREETCAR 15 FED #5H & #6H.....10404 FT TO STREETCAR 15 FED #7H & #8H.....8798 FT TO STREETCAR 15 FED #9H & #10H.....7958 FT
8" PRODUCED WATERLINE -TOTAL FOOTAGE.....12089 FT -(WORKING PRESSURE 75-125 PSI)	PRW	12" GAS SALES LINE -TOTAL FOOTAGE.....12091 FT -(WORKING PRESSURE 75-125 PSI)
FROM LOMAS ROJAS 26 STATE #1H (SEC. 26) TO STREETCAR 15 FED #1H & #2H.....12089 FT TO STREETCAR 15 FED #3H & #4H.....11219 FT TO STREETCAR 15 FED #5H & #6H.....10404 FT TO STREETCAR 15 FED #7H & #8H.....8798 FT TO STREETCAR 15 FED #9H & #10H.....7958 FT		FROM LOMAS ROJAS 26 STATE #1H (SEC. 26) TO STREETCAR 15 FED #1H & #2H.....12089 FT TO STREETCAR 15 FED #3H & #4H.....11219 FT TO STREETCAR 15 FED #5H & #6H.....10404 FT TO STREETCAR 15 FED #7H & #8H.....8800 FT TO STREETCAR 15 FED #9H & #10H.....7960 FT
8" GAS LIFT LINE -TOTAL FOOTAGE.....12089 FT -(WORKING PRESSURE 75-125 PSI)	LIFT	4" STEEL OIL SALES LINE (ITS OWN ROW BURIED) -TOTAL FOOTAGE.....12093 FT -(WORKING PRESSURE 75-125 PSI)
FROM LOMAS ROJAS 26 STATE #1H (SEC. 26) TO STREETCAR 15 FED #1H & #2H.....12089 FT TO STREETCAR 15 FED #3H & #4H.....11219 FT TO STREETCAR 15 FED #5H & #6H.....10404 FT TO STREETCAR 15 FED #7H & #8H.....8798 FT TO STREETCAR 15 FED #9H & #10H.....7958 FT		FROM LOMAS ROJAS 26 STATE #1H (SEC. 26) TO STREETCAR 15 FED #1H & #2H.....12089 FT TO STREETCAR 15 FED #3H & #4H.....11219 FT TO STREETCAR 15 FED #5H & #6H.....10408 FT TO STREETCAR 15 FED #7H & #8H.....8803 FT TO STREETCAR 15 FED #9H & #10H.....7963 FT



STREETCAR 15 FED #1H-#10H INFRASTRUCTURE MAP	REVISION:	
	INT	DATE
DATE: 01/13/15		
FILE: SK_STREETCAR15FED_1H-10H_INFRASTRUCTURE		
DRAWN BY: S.V.		
SHEET: 1 OF 1		