

District I  
1625 N. French Dr., Hobbs, NM 88240  
Phone: (575) 393-6161 Fax: (575) 393-0720  
District II  
811 S. First St., Artesia, NM 88210  
Phone: (575) 748-1283 Fax: (575) 748-9720  
District III  
1000 Rio Brazos Road, Aztec, NM 87410  
Phone: (505) 334-6178 Fax: (505) 334-6170  
District IV  
1220 S. St. Francis Dr., Santa Fe, NM 87505  
Phone: (505) 476-3460 Fax: (505) 476-3462

State of New Mexico  
Energy, Minerals & Natural Resources  
Department  
OIL CONSERVATION DIVISION  
1220 South St. Francis Dr.  
Santa Fe, NM 87505

HOBBS OGD  
OCT 13 2015  
RECEIVED

FORM C-102

Revised August 1, 2011

Submit one copy to appropriate

District Office

☐ AMENDED REPORT

WELL LOCATION AND ACREAGE DEDICATION PLAT

|   |   |  |
|---|---|--|
| <sup>1</sup> API Number<br>30-025- <b>42865</b> | <sup>2</sup> Pool Code<br>97900                   | <sup>3</sup> Pool Name<br>Red Hills; Upper Bone Spring Shale |
| <sup>4</sup> Property Code<br><b>315910</b>     | <sup>5</sup> Property Name<br>STREETCAR 15 FED    | <sup>6</sup> Well Number<br>#9H                              |
| <sup>7</sup> GRID No.<br>7377                   | <sup>8</sup> Operator Name<br>EOG RESOURCES, INC. | <sup>9</sup> Elevation<br>3351'                              |

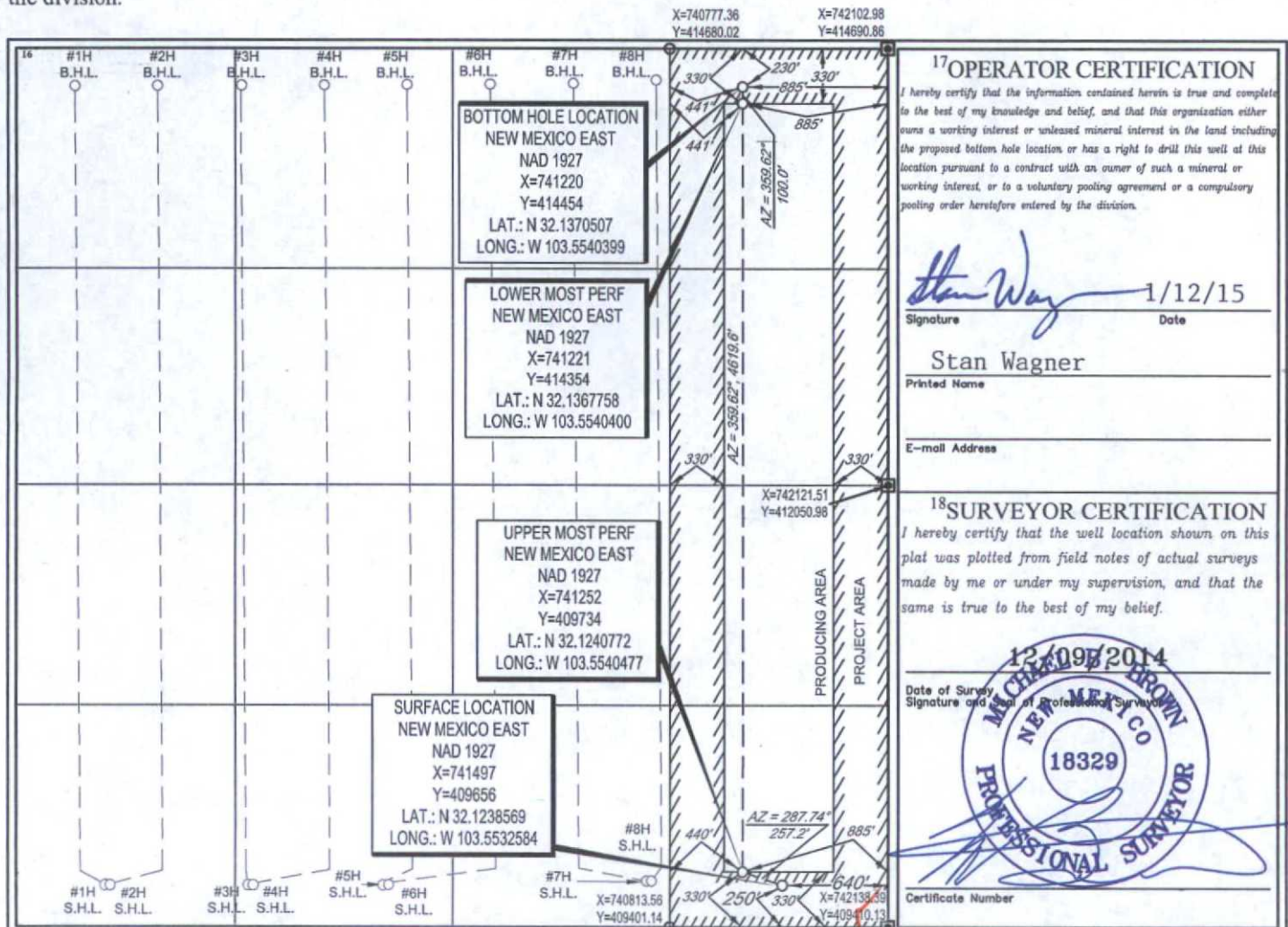
<sup>10</sup>Surface Location

| UL or lot no. | Section | Township | Range | Lot Idn | Feet from the | North/South line | Feet from the | East/West line | County |
|---------------|---------|----------|-------|---------|---------------|------------------|---------------|----------------|--------|
| P             | 15      | 25-S     | 33-E  | -       | 250'          | SOUTH            | 640'          | EAST           | LEA    |

| UL or lot no. | Section | Township | Range | Lot Idn | Feet from the | North/South line | Feet from the | East/West line | County |
|---------------|---------|----------|-------|---------|---------------|------------------|---------------|----------------|--------|
| A             | 15      | 25-S     | 33-E  | -       | 230'          | NORTH            | 885'          | EAST           | LEA    |

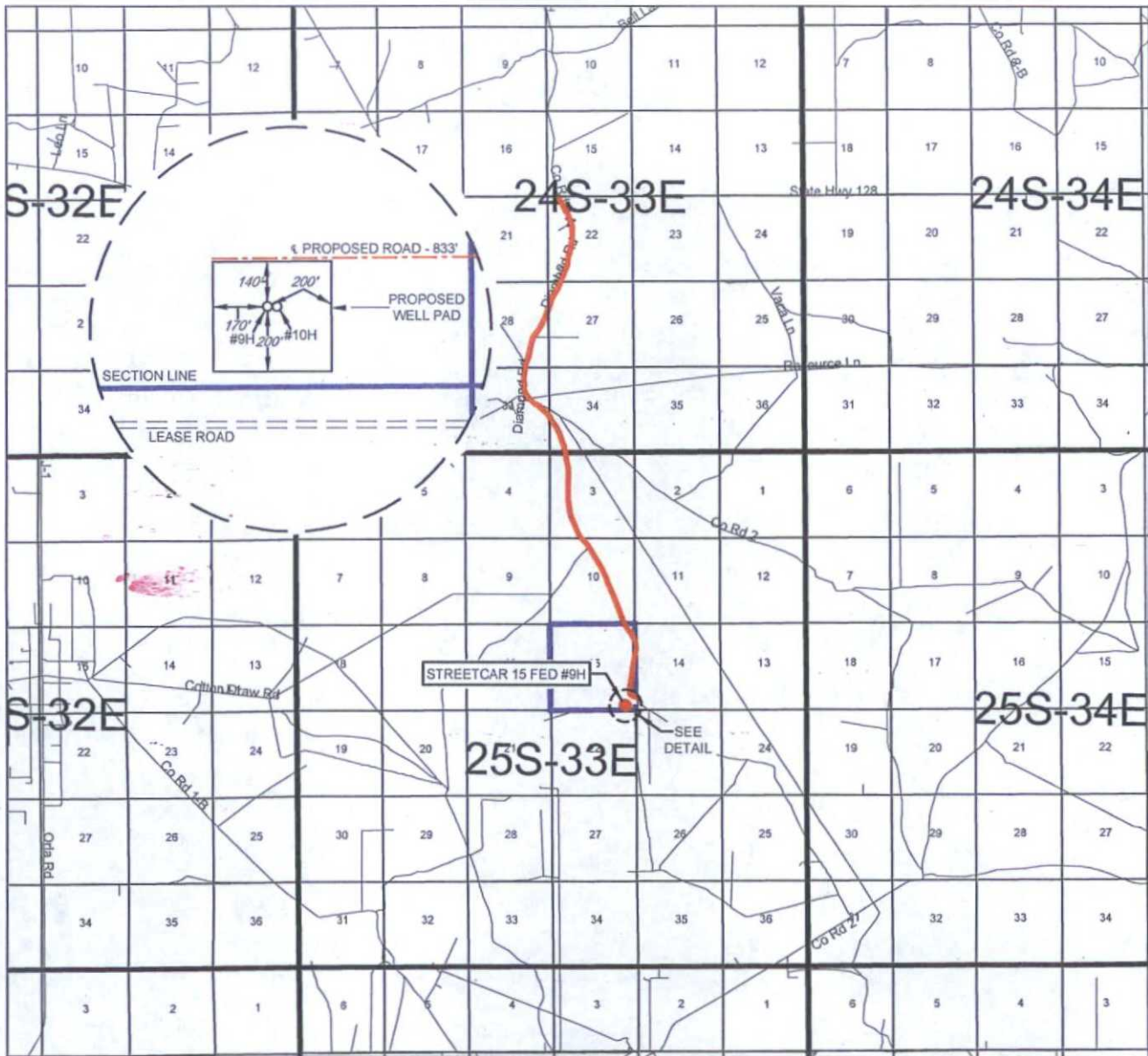
|   |                               |                                  |                         |
|---|-------------------------------|----------------------------------|-------------------------|
| <sup>12</sup> Dedicated Acres<br>160.00 | <sup>13</sup> Joint or Infill | <sup>14</sup> Consolidation Code | <sup>15</sup> Order No. |
|---|-------------------------------|----------------------------------|-------------------------|

No allowable will be assigned to this completion until all interests have been consolidated or a non-standard unit has been approved by the division.



OCT 15 2015

# EXHIBIT 2 VICINITY MAP



LEASE NAME & WELL NO.: STREETCAR 15 FED #9H

SECTION 15 TWP 25-S RGE 33-E SURVEY N.M.P.M.  
COUNTY LEA STATE NM  
DESCRIPTION 250' FSL & 640' FEL

DISTANCE & DIRECTION  
FROM INT. OF NM-18 N & NM-128, GO WEST ON NM-128 W  $\pm 23.9$  MILES,  
THENCE SOUTH (LEFT) ON DIAMOND RD./J-2  $\pm 2.5$  MILES, THENCE  
SOUTHEAST (LEFT) ON CR. 2  $\pm 0.2$  MILE, THENCE SOUTH (RIGHT) ON  
LEASE RD.  $\pm 2.8$  MILES, THENCE SOUTH (RIGHT)  $\pm 305$  FEET ON LEASE  
RD., THENCE WEST (RIGHT) ON PROPOSED RD. 833 FEET TO A POINT  
NORTH OF THE LOCATION.

THIS EASEMENT/SERVITUDE LOCATION SHOWN HEREON HAS BEEN SURVEYED ON THE GROUND UNDER MY SUPERVISION AND PREPARED ACCORDING TO THE EVIDENCE FOUND AT THE TIME OF SURVEY, AND DATA PROVIDED BY EOG RESOURCES, INC. THIS CERTIFICATION IS MADE AND LIMITED TO THOSE PERSONS OR ENTITIES SHOWN ON THE FACE OF THIS PLAT AND IS NON-TRANSFERABLE. THIS SURVEY IS CERTIFIED FOR THIS TRANSACTION ONLY.

ALL BEARINGS, DISTANCES, AND COORDINATE VALUES CONTAINED HEREON ARE GRID BASED UPON THE NEW MEXICO STATE PLANE COORDINATE SYSTEM, EAST ZONE OF THE NORTH AMERICAN DATUM 1927, U.S. SURVEY FEET.



SCALE: 1" = 10000'  
0' 5000' 10000'

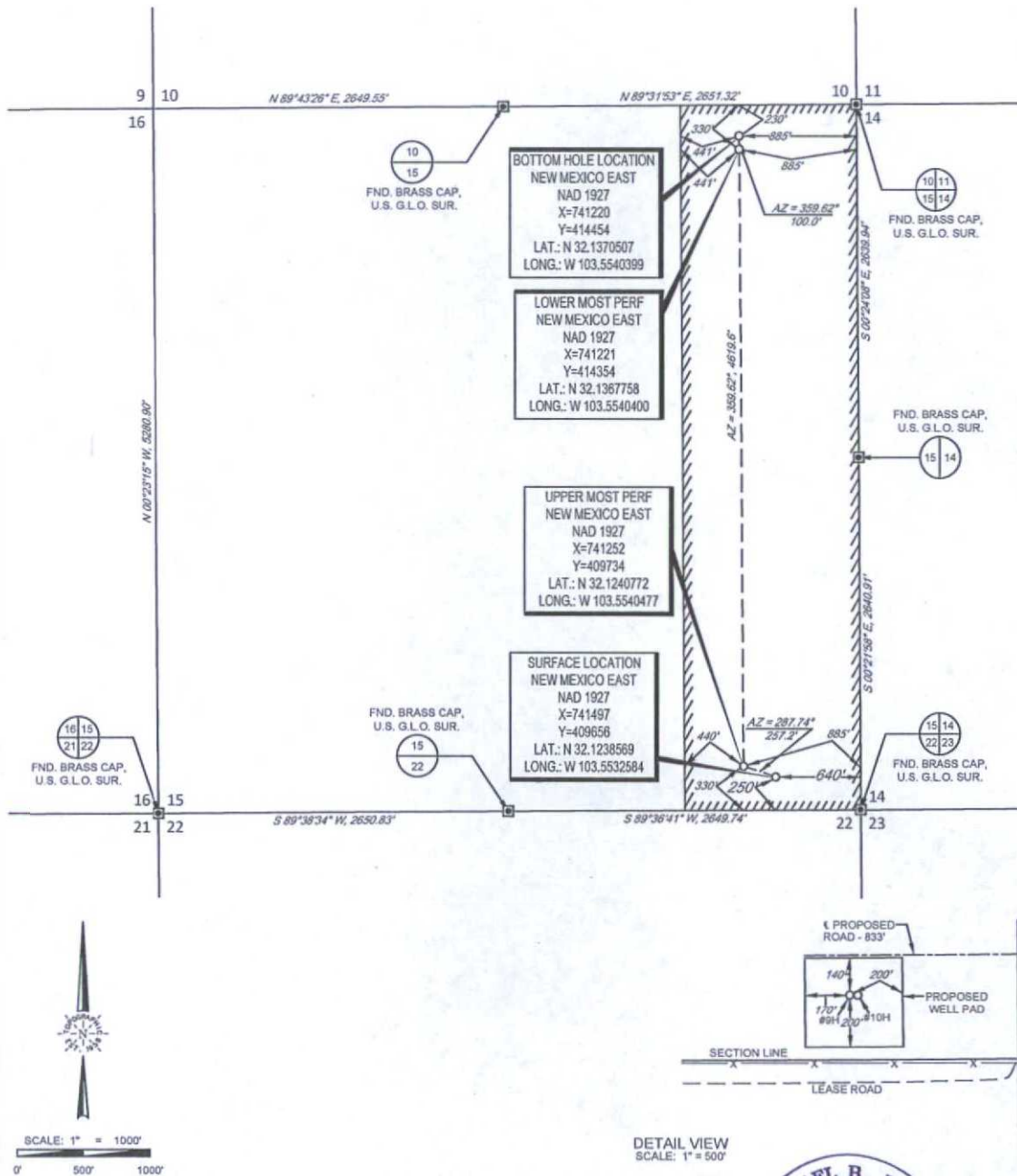


1400 EVERMAN PARKWAY, Ste. 197 • FT. WORTH, TEXAS 76140  
TELEPHONE: (817) 744-7512 • FAX: (817) 744-7548  
2903 NORTH BIG SPRING • MIDLAND, TEXAS 79705  
TELEPHONE: (432) 682-1553 OR (800) 767-1553 • FAX: (432) 682-1743  
WWW.TOPOGRAPHIC.COM



## EXHIBIT 2A

SECTION 15, TOWNSHIP 25-S, RANGE 33-E, N.M.P.M.  
LEA COUNTY, NEW MEXICO



LEASE NAME & WELL NO.: STREETCAR 15 FED #9H

SECTION 15 TWP 25-S RGE 33-E SURVEY N.M.P.M.  
COUNTY LEA STATE NM  
DESCRIPTION 250' FSL & 640' FEL

### DISTANCE & DIRECTION

FROM INT. OF NM-18 N & NM-128, GO WEST ON NM-128 W ±23.9 MILES, THENCE SOUTH (LEFT) ON DIAMOND RD/J-2 ±2.5 MILES, THENCE SOUTHEAST (LEFT) ON CR. 2 ±0.2 MILE, THENCE SOUTH (RIGHT) ON LEASE RD. ±2.8 MILES, THENCE SOUTH (RIGHT) ±305 FEET ON LEASE RD., THENCE WEST (RIGHT) ON PROPOSED RD. 833 FEET TO A POINT NORTH OF THE LOCATION.

ALL BEARINGS, DISTANCES, AND COORDINATE VALUES CONTAINED HEREON ARE GRID BASED UPON THE NEW MEXICO STATE PLANE COORDINATE SYSTEM, EAST ZONE OF THE NORTH AMERICAN DATUM 1927, U.S. SURVEY FEET.

THIS EASEMENT/RIGHT-OF-WAY LOCATION SHOWN HEREON HAS BEEN SURVEYED ON THE GROUND UNDER MY SUPERVISION AND PREPARED ACCORDING TO THE EVIDENCE FOUND AT THE TIME OF SURVEY, AND DATA PROVIDED BY EOG RESOURCES, INC. THIS CERTIFICATION IS MADE AND LIMITED TO THOSE PERSONS OR ENTITIES SHOWN ON THE FACE OF THIS PLAT AND IS NON-TRANSFERABLE. THIS SURVEY IS CERTIFIED FOR THIS TRANSACTION ONLY.

DETAIL VIEW  
SCALE: 1" = 500'



Michael Blake Brown, P.S. No. 18329  
JANUARY 8, 2015



1400 EVERMAN PARKWAY, Ste. 197 • FT. WORTH, TEXAS 76140  
TELEPHONE: (817) 744-7512 • FAX: (817) 744-7548  
2903 NORTH BIG SPRING • MIDLAND, TEXAS 79705  
TELEPHONE: (432) 682-1653 OR (800) 767-1653 • FAX: (432) 682-1743  
WWW.TOPOGRAPHIC.COM

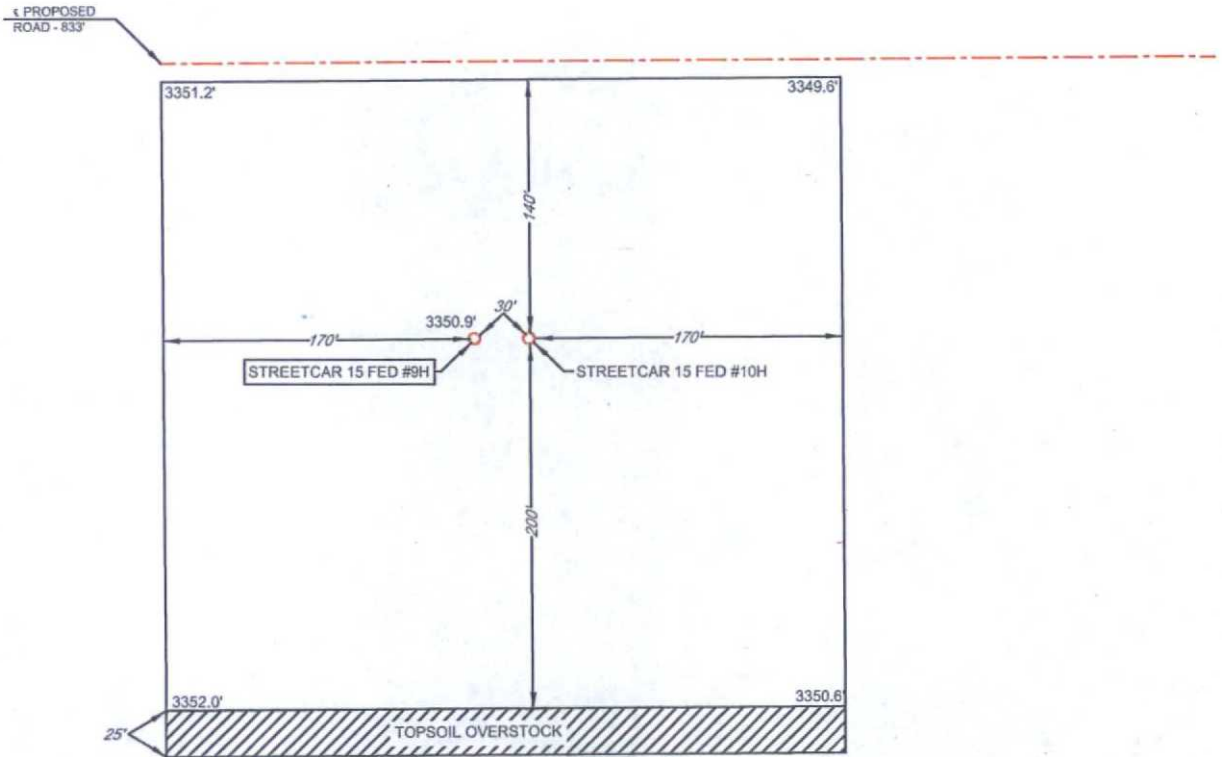


# EXHIBIT 2B

**eog resources, Inc.**

SECTION 15, TOWNSHIP 25-S, RANGE 33-E, N.M.P.M.  
LEA COUNTY, NEW MEXICO

DETAIL VIEW  
SCALE: 1" = 100'



LEASE NAME & WELL NO.: STREETCAR 15 FED #9H  
#9H LATITUDE N 32.1238569 #9H LONGITUDE W 103.5532584

## LEGEND

--- PROPOSED ROAD  
— SECTION LINE



SCALE: 1" = 100'  
0' 50' 100'

ALL BEARINGS, DISTANCES, AND COORDINATE VALUES CONTAINED HEREON ARE GRID BASED UPON THE NEW MEXICO STATE PLANE COORDINATE SYSTEM, EAST ZONE OF THE NORTH AMERICAN DATUM 1927, U.S. SURVEY FEET

THIS PROPOSED PAD SITE LOCATION SHOWN HEREON HAS BEEN SURVEYED ON THE GROUND UNDER MY SUPERVISION AND PREPARED ACCORDING TO THE EVIDENCE FOUND AT THE TIME OF SURVEY, AND DATA PROVIDED BY EOG RESOURCES, INC. THIS CERTIFICATION IS MADE AND LIMITED TO THOSE PERSONS OR ENTITIES SHOWN ON THE FACE OF THIS PLAT AND IS NON-TRANSFERABLE. THIS SURVEY IS CERTIFIED FOR THIS TRANSACTION ONLY.



**TOPOGRAPHIC**  
LOYALTY INNOVATION LEGACY

1400 EVERMAN PARKWAY, Ste. 197 • FT. WORTH, TEXAS 76140  
TELEPHONE: (817) 744-7512 • FAX (817) 744-7548  
2503 NORTH BIG SPRING • MIDLAND, TEXAS 79705  
TELEPHONE: (432) 682-1653 OR (800) 767-1653 • FAX (432) 682-1743  
WWW.TOPOGRAPHIC.COM

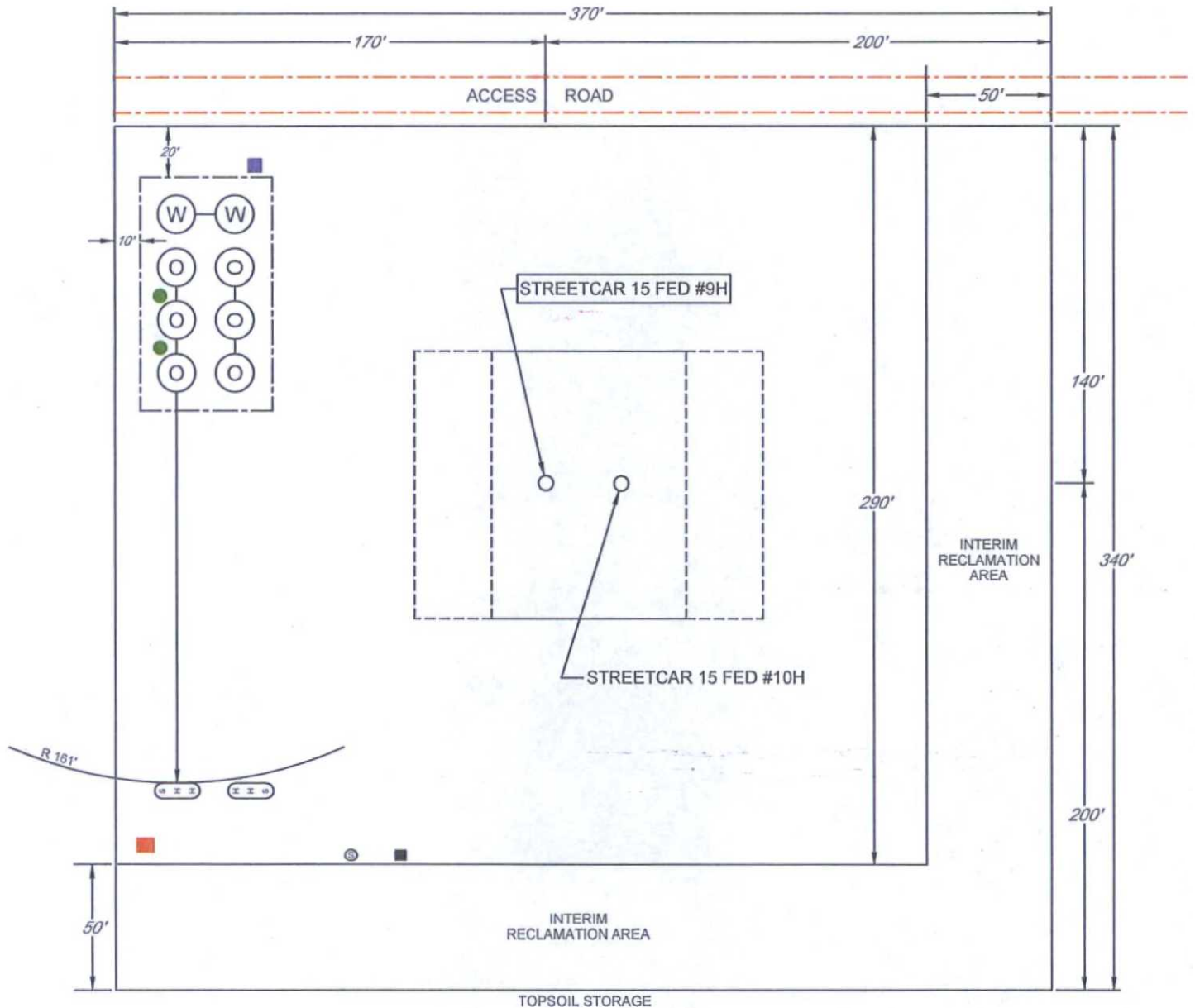
ORIGINAL DOCUMENT SIZE: 8.5" X 11"

# EXHIBIT 2C

## RECLAMATION AND FACILITY DIAGRAM - PRODUCTION FACILITIES DIAGRAM

SECTION 15, TOWNSHIP 25-S, RANGE 33-E, N.M.P.M.  
LEA COUNTY, NEW MEXICO

DETAIL VIEW  
SCALE: 1" = 60'



LEASE NAME & WELL NO.: STREETCAR 15 FED #9H  
#9H LATITUDE N 32.1238569 #9H LONGITUDE W 103.5532584

### LEGEND

|  |                          |  |                 |
|--|--------------------------|--|-----------------|
|  | 500 BBL OIL TANK         |  | FLARE SEPARATOR |
|  | 500 BBL WATER TANK       |  | VRU             |
|  | 36 x 15 HEATER/SEPARATOR |  | 48 X 25 VRT     |
|  |                          |  | FP FLARE        |
|  |                          |  | OP FLARE        |



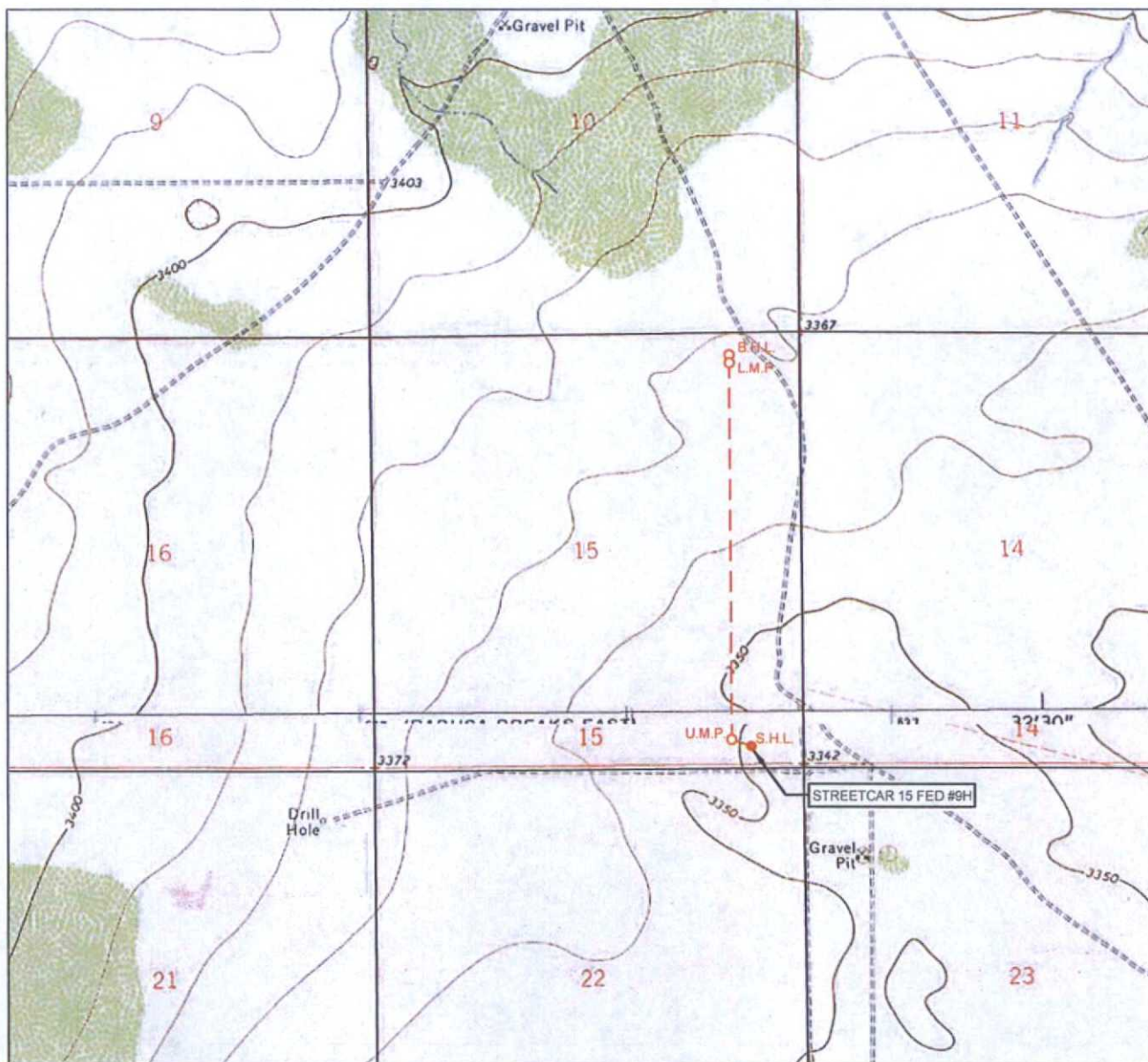
**eog resources, inc.**

[illegible]

#9H LONGITUDE W 103.5532584

1400 EVERMAN PARKWAY, Ste. 197 • FT. WORTH, TEXAS 76140  
TELEPHONE: (817) 744-7512 • FAX (817) 744-7548  
2903 NORTH BIG SPRING • MIDLAND, TEXAS 79705  
TELEPHONE: (432) 682-1053 OR (800) 767-1053 • FAX (432) 682-1743  
WWW.TOPOGRAPHIC.COM

# LOCATION & ELEVATION VERIFICATION MAP



LEASE NAME & WELL NO.: STREETCAR 15 FED #9H

SECTION 15 TWP 25-S RGE 33-E SURVEY N.M.P.M.  
 COUNTY LEA STATE NM ELEVATION 3351'  
 DESCRIPTION 250' FSL & 640' FEL

LATITUDE N 32.1238569 LONGITUDE W 103.5532584



SCALE: 1" = 2000'  
 0' 1000' 2000'

THIS EASEMENT/SERVITUDE LOCATION SHOWN HEREON HAS BEEN SURVEYED ON THE GROUND UNDER MY SUPERVISION AND PREPARED ACCORDING TO THE EVIDENCE FOUND AT THE TIME OF SURVEY, AND DATA PROVIDED BY EOG RESOURCES, INC. THIS CERTIFICATION IS MADE AND LIMITED TO THOSE PERSONS OR ENTITIES SHOWN ON THE FACE OF THIS PLAT AND IS NON-TRANSFERABLE. THIS SURVEY IS CERTIFIED FOR THIS TRANSACTION ONLY.

ALL BEARINGS, DISTANCES, AND COORDINATE VALUES CONTAINED HEREON ARE GRID BASED UPON THE NEW MEXICO STATE PLANE COORDINATE SYSTEM, EAST ZONE OF THE NORTH AMERICAN DATUM 1927, U.S. SURVEY FEET.



**TOPOGRAPHIC**  
 LOYALTY INNOVATION LEGACY

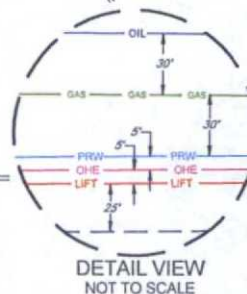
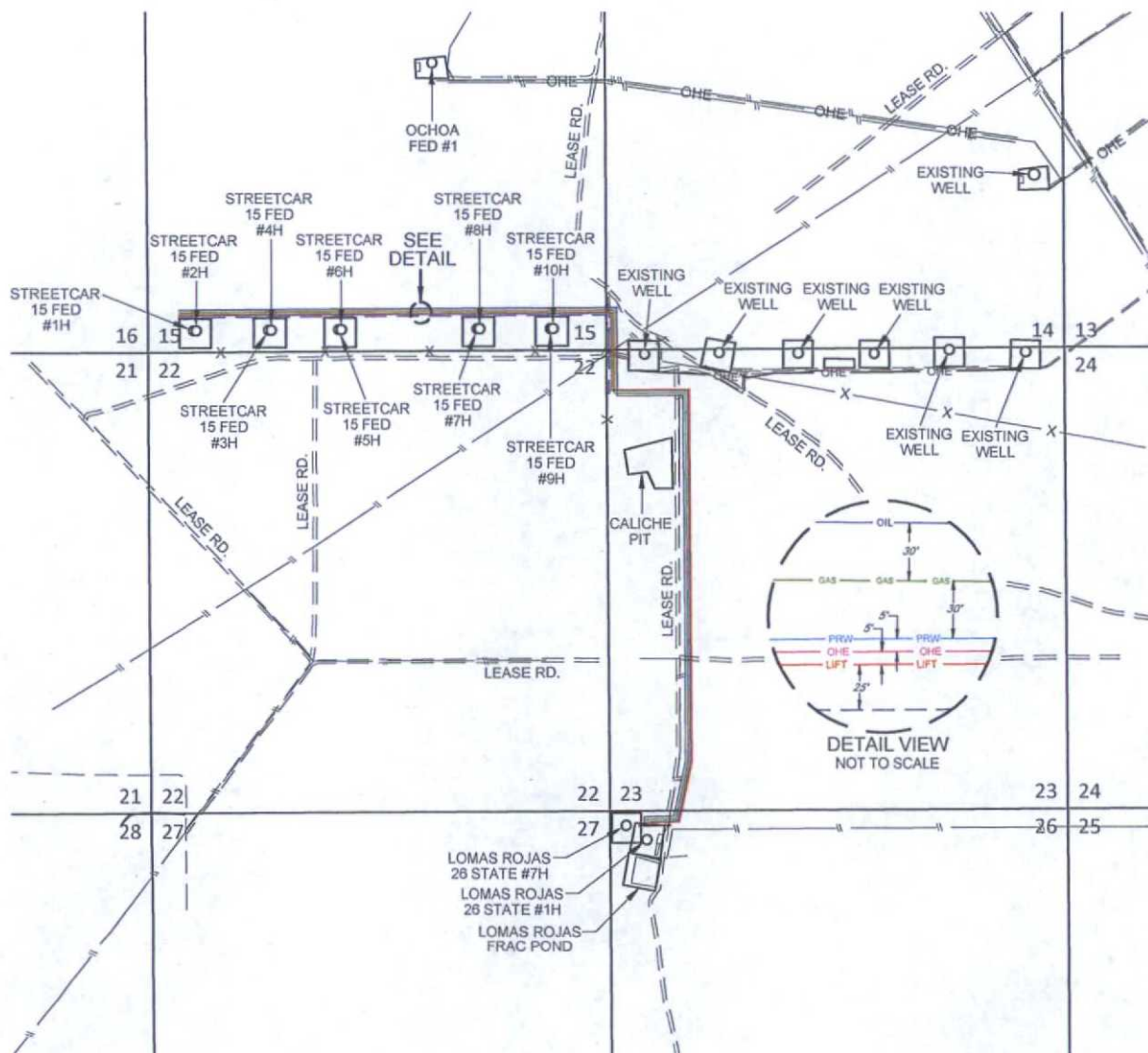
1400 EVERMAN PARKWAY, Ste. 197 • FT. WORTH, TEXAS 76140  
 TELEPHONE: (817) 744-7512 • FAX (817) 744-7548  
 2903 NORTH BIG SPRING • MIDLAND, TEXAS 79705  
 TELEPHONE: (432) 682-1653 OR (800) 767-1653 • FAX (432) 682-1743  
 WWW.TOPOGRAPHIC.COM

SCALE: 1" = 2000'  
0' 1000' 2000'

## EXHIBIT 5

SECTION 14, 15, 23, 26, TOWNSHIP 25-S, RANGE 33-E, N.M.P.M.  
LEA COUNTY, NEW MEXICO

# STREETCAR 15 FED #1H-#10H INFRASTRUCTURE MAP



**eog resources, inc.**

STREETCAR 15 FED  
#1H-#10H  
INFRASTRUCTURE MAP

REVISION:

INT DATE

DATE: 01/13/15

FILE: SK\_STREETCAR15FED\_1H-10H\_INFRASTRUCTURE

DRAWN BY: S.V.

SHEET: 1 OF 1

LEASE RD.  
-TOTAL FOOTAGE 4964 FT

FROM EXISTING LEASE RD. (SEC. 14)  
TO STREETCAR 15 FED #1H & #2H 4964 FT  
TO STREETCAR 15 FED #3H & #4H 4094 FT  
TO STREETCAR 15 FED #5H & #6H 3279 FT  
TO STREETCAR 15 FED #7H & #8H 1673 FT  
TO STREETCAR 15 FED #9H & #10H 833 FT

8" PRODUCED WATERLINE  
-TOTAL FOOTAGE 12089 FT  
-(WORKING PRESSURE 75-125 PSI)

FROM LOMAS ROJAS 26 STATE #1H (SEC. 26)  
TO STREETCAR 15 FED #1H & #2H 12089 FT  
TO STREETCAR 15 FED #3H & #4H 11219 FT  
TO STREETCAR 15 FED #5H & #6H 10404 FT  
TO STREETCAR 15 FED #7H & #8H 8798 FT  
TO STREETCAR 15 FED #9H & #10H 7958 FT

8" GAS LIFT LINE  
-TOTAL FOOTAGE 12089 FT  
-(WORKING PRESSURE 75-125 PSI)

FROM LOMAS ROJAS 26 STATE #1H (SEC. 26)  
TO STREETCAR 15 FED #1H & #2H 12089 FT  
TO STREETCAR 15 FED #3H & #4H 11219 FT  
TO STREETCAR 15 FED #5H & #6H 10404 FT  
TO STREETCAR 15 FED #7H & #8H 8798 FT  
TO STREETCAR 15 FED #9H & #10H 7958 FT

ELECTRIC LINE  
-TOTAL FOOTAGE 12089 FT  
-(WORKING PRESSURE 75-125 PSI)

FROM LOMAS ROJAS 26 STATE #1H (SEC. 26)  
TO STREETCAR 15 FED #1H & #2H 12089 FT  
TO STREETCAR 15 FED #3H & #4H 11219 FT  
TO STREETCAR 15 FED #5H & #6H 10404 FT  
TO STREETCAR 15 FED #7H & #8H 8798 FT  
TO STREETCAR 15 FED #9H & #10H 7958 FT

12" GAS SALES LINE  
-TOTAL FOOTAGE 12091 FT  
-(WORKING PRESSURE 75-125 PSI)

FROM LOMAS ROJAS 26 STATE #1H (SEC. 26)  
TO STREETCAR 15 FED #1H & #2H 12091 FT  
TO STREETCAR 15 FED #3H & #4H 11221 FT  
TO STREETCAR 15 FED #5H & #6H 10406 FT  
TO STREETCAR 15 FED #7H & #8H 8800 FT  
TO STREETCAR 15 FED #9H & #10H 7960 FT

4" STEEL OIL SALES LINE (ITS OWN ROW BURIED)  
-TOTAL FOOTAGE 12093 FT  
-(WORKING PRESSURE 75-125 PSI)

FROM LOMAS ROJAS 26 STATE #1H (SEC. 26)  
TO STREETCAR 15 FED #1H & #2H 12093 FT  
TO STREETCAR 15 FED #3H & #4H 11223 FT  
TO STREETCAR 15 FED #5H & #6H 10408 FT  
TO STREETCAR 15 FED #7H & #8H 8803 FT  
TO STREETCAR 15 FED #9H & #10H 7963 FT