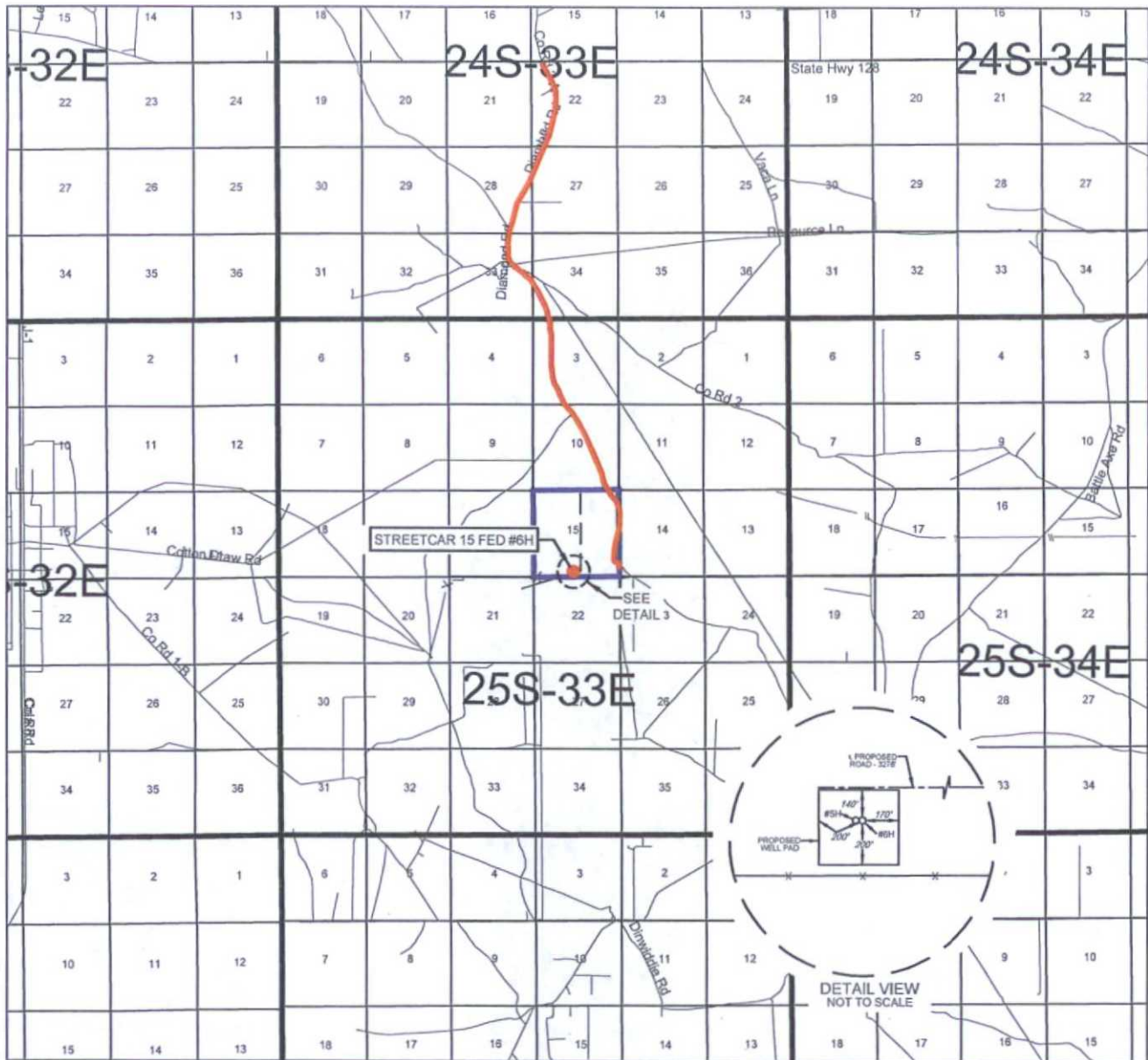


OCT 15 2015

# EXHIBIT 2 VICINITY MAP



LEASE NAME & WELL NO.: STREETCAR 15 FED #6H

SECTION 15 TWP 25-S RGE 33-E SURVEY N.M.P.M.

COUNTY LEA STATE NM

DESCRIPTION 250 FSL & 2245 FWL

## DISTANCE & DIRECTION

FROM INT. OF NM-18 N & NM-128. GO WEST ON NM-128 W +23.9 MILES, THENCE SOUTH (LEFT) ON DIAMOND RD./J-2 ±2.5 MILES, THENCE SOUTHEAST (LEFT) ON CR. 2 ±0.2 MILE, THENCE SOUTH (RIGHT) ON LEASE RD. ±2.8 MILES, THENCE SOUTH (RIGHT) ±305 FEET ON LEASE RD., THENCE WEST (RIGHT) ON PROPOSED RD. 3278 FEET TO A POINT NORTH OF THE LOCATION.

THIS EASEMENT/SERVITUDE LOCATION SHOWN HEREON HAS BEEN SURVEYED ON THE GROUND UNDER MY SUPERVISION AND PREPARED ACCORDING TO THE EVIDENCE FOUND AT THE TIME OF SURVEY, AND DATA PROVIDED BY EOG RESOURCES, INC. THIS CERTIFICATION IS MADE AND LIMITED TO THOSE PERSONS OR ENTITIES SHOWN ON THE FACE OF THIS PLAT AND IS NON-TRANSFERABLE. THIS SURVEY IS CERTIFIED FOR THIS TRANSACTION ONLY.

ALL BEARINGS, DISTANCES, AND COORDINATE VALUES CONTAINED HEREON ARE GRID BASED UPON THE NEW MEXICO STATE PLANE COORDINATE SYSTEM, EAST ZONE OF THE NORTH AMERICAN DATUM 1927, U.S. SURVEY FEET.

SCALE: 1" = 10000'



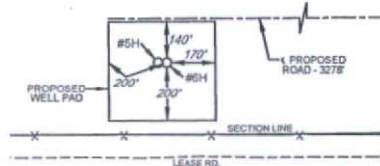
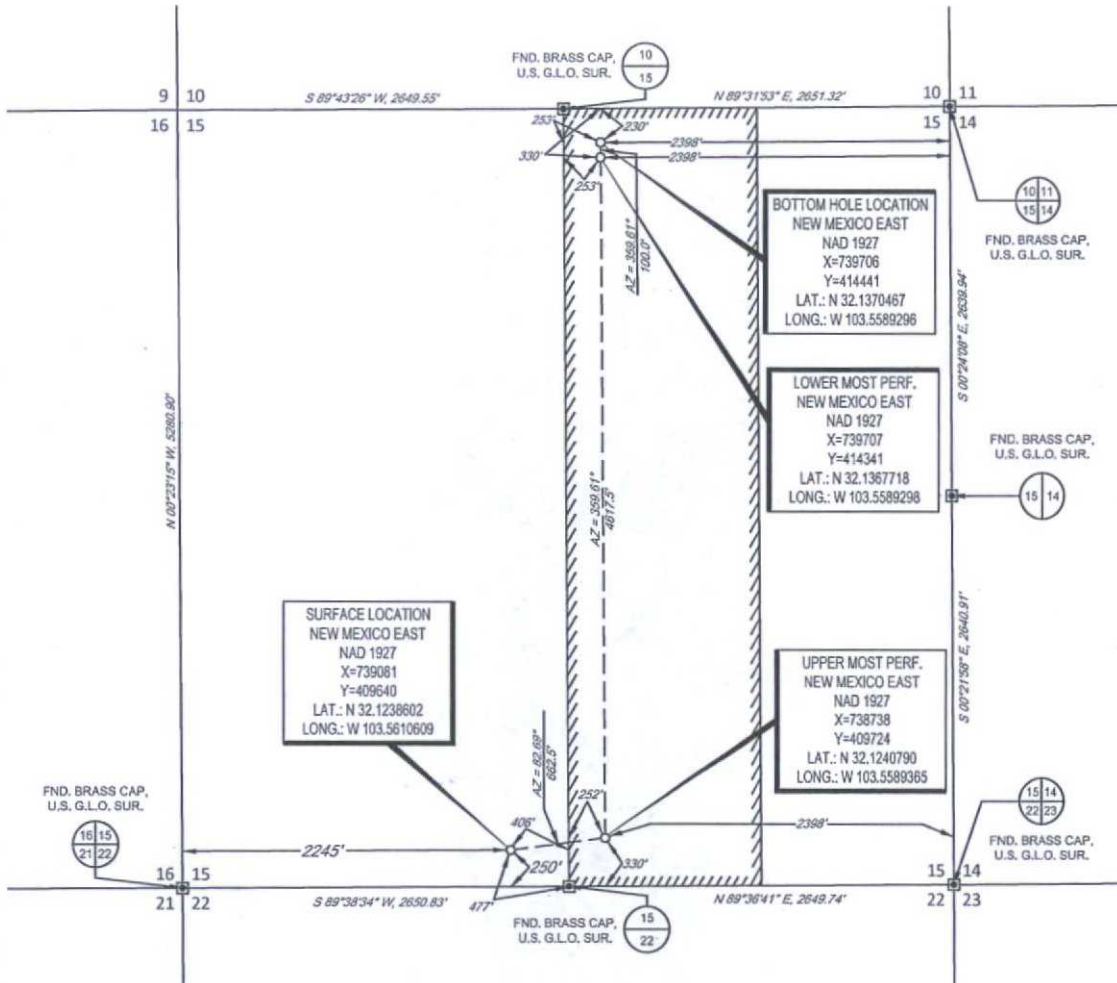
1400 EVERMAN PARKWAY, Ste. 197 • FT. WORTH, TEXAS 76140  
TELEPHONE: (817) 744-7512 • FAX (817) 744-7548  
2903 NORTH BIG SPRING • MIDLAND, TEXAS 79705  
TELEPHONE: (432) 682-1653 OR (800) 767-1653 • FAX (432) 682-1743  
WWW.TOPOGRAPHIC.COM





## EXHIBIT 2A

SECTION 15, TOWNSHIP 25-S, RANGE 33-E, N.M.P.M.  
LEA COUNTY, NEW MEXICO



DETAIL VIEW  
SCALE: 1" = 500'

LEASE NAME & WELL NO.: STREETCAR 15 FED #6H

SECTION 15 TWP 25-S RGE 33-E SURVEY N.M.P.M.  
COUNTY LEA STATE NM

DESCRIPTION 250 FSL & 2245 FWL

DISTANCE & DIRECTION

FROM INT. OF NM-18 N & NM-128, GO WEST ON NM-128 W ±23.9 MILES. THENCE SOUTH (LEFT) ON DIAMOND RD. I-2 ±2.5 MILES. THENCE SOUTHEAST (LEFT) ON CR. 2 ±0.2 MILE, THENCE SOUTH (RIGHT) ON LEASE RD. ±2.8 MILES, THENCE SOUTH (RIGHT) ±305 FEET ON LEASE RD., THENCE WEST (RIGHT) ON PROPOSED RD. 3278 FEET TO A POINT NORTH OF THE LOCATION.

ALL BEARINGS, DISTANCES, AND COORDINATE VALUES CONTAINED HEREON ARE GRID BASED UPON THE NEW MEXICO STATE PLANE COORDINATE SYSTEM, EAST ZONE OF THE NORTH AMERICAN DATUM 1927, U.S. SURVEY FEET.

THIS EASEMENT-SERVITUDE LOCATION SHOWN HEREON HAS BEEN SURVEYED ON THE GROUND UNDER MY SUPERVISION AND PREPARED ACCORDING TO THE EVIDENCE FOUND AT THE TIME OF SURVEY, AND DATA PROVIDED BY EOG RESOURCES, INC. THIS CERTIFICATION IS MADE AND LIMITED TO THOSE PERSONS OR ENTITIES SHOWN ON THE FACE OF THIS PLAT AND IS NON-TRANSFERABLE. THIS SURVEY IS CERTIFIED FOR THIS TRANSACTION ONLY.



Michael Blake Brown, P.S. No. 18329  
JANUARY 8, 2015



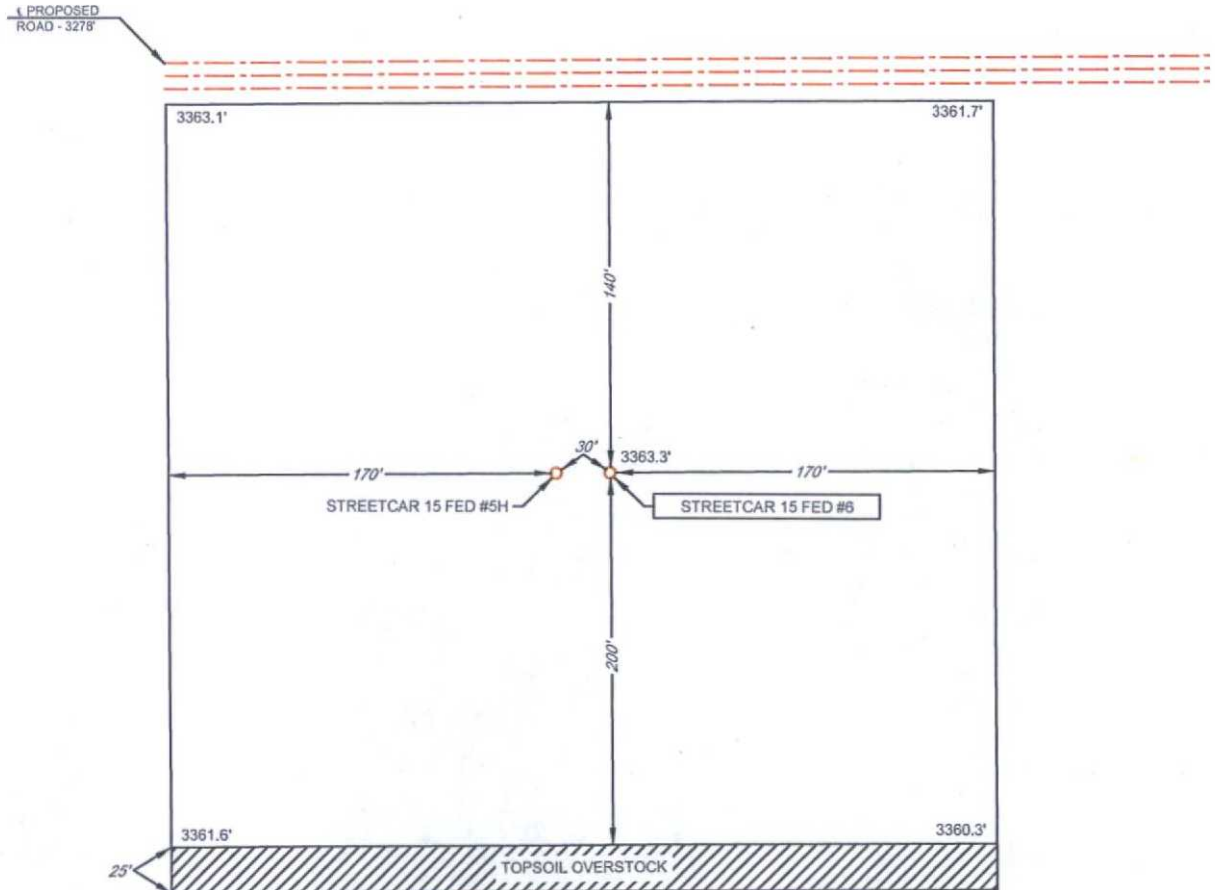
1400 EVERMAN PARKWAY, Ste. 197 • FT. WORTH, TEXAS 76140  
TELEPHONE: (817) 744-7512 • FAX: (817) 744-7548  
2503 NORTH 803 STREET • MIDLAND, TEXAS 79705  
TELEPHONE: (432) 682-1653 OR (800) 767-1653 • FAX: (432) 682-1743  
WWW.TOPOGRAPHIC.COM



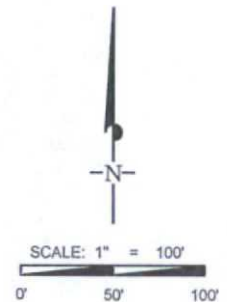
## EXHIBIT 2B

SECTION 15, TOWNSHIP 25-S, RANGE 33-E, N.M.P.M.  
LEA COUNTY, NEW MEXICO

DETAIL VIEW  
SCALE: 1" = 100'



LEASE NAME & WELL NO.: STREETCAR 15 FED #6H  
#6H LATITUDE N 32.1238602 #6H LONGITUDE W 103.5610609



ALL BEARINGS, DISTANCES, AND COORDINATE VALUES CONTAINED HEREON ARE GRID  
BASED UPON THE NEW MEXICO STATE PLANE COORDINATE SYSTEM, EAST ZONE OF THE  
NORTH AMERICAN DATUM 1927, U.S. SURVEY FEET

THIS PROPOSED PAD SITE LOCATION SHOWN HEREON HAS BEEN SURVEYED ON THE GROUND UNDER  
MY SUPERVISION AND PREPARED ACCORDING TO THE EVIDENCE FOUND AT THE TIME OF SURVEY,  
AND DATA PROVIDED BY EOG RESOURCES, INC. THIS CERTIFICATION IS MADE AND LIMITED TO THOSE  
PERSONS OR ENTITIES SHOWN ON THE FACE OF THIS PLAT AND IS NON-TRANSFERABLE. THIS  
SURVEY IS CERTIFIED FOR THIS TRANSACTION ONLY.



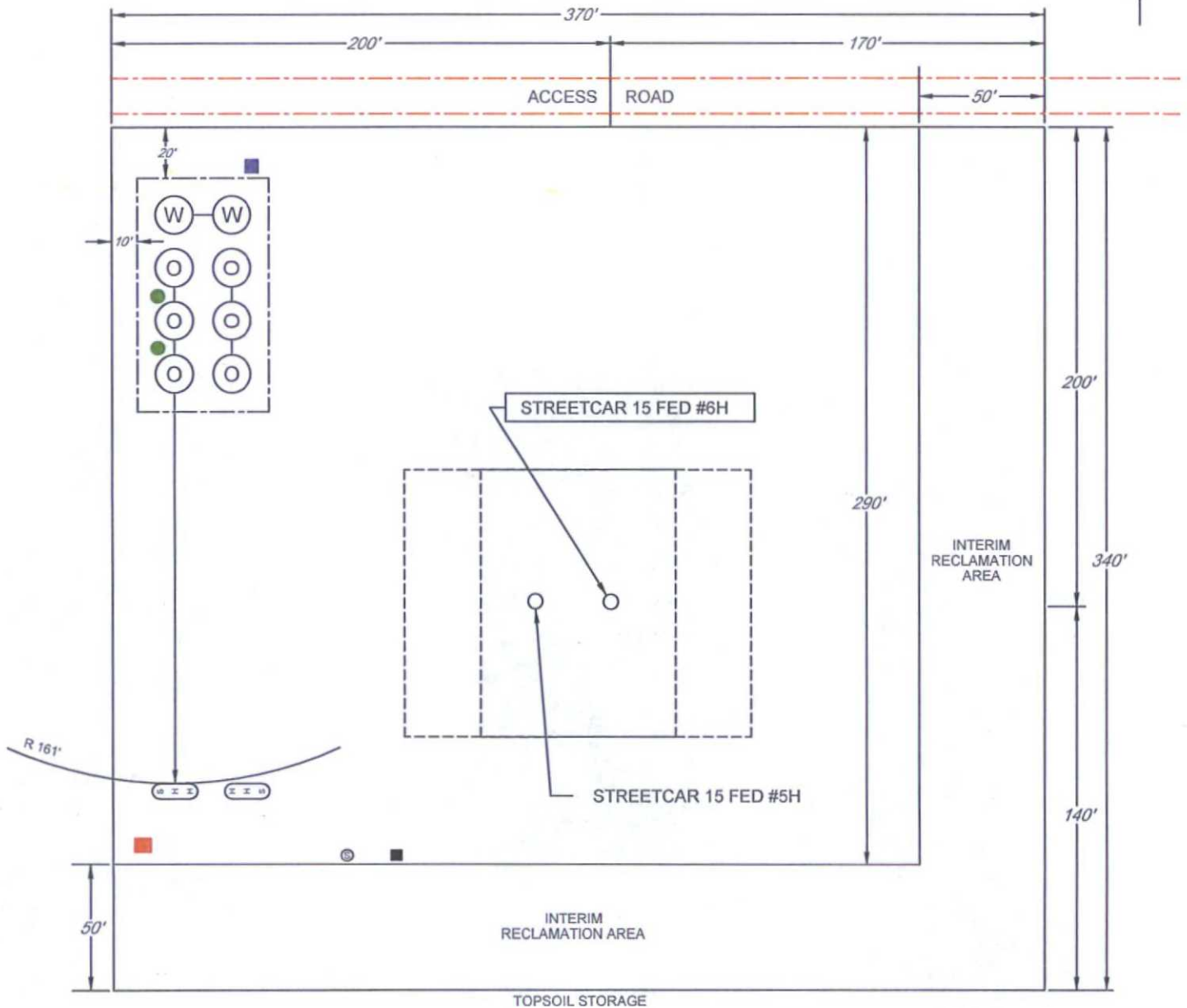
1400 EVERMAN PARKWAY, Ste. 197 • FT. WORTH, TEXAS 76140  
TELEPHONE: (817) 744-7512 • FAX (817) 744-7548  
2903 NORTH BIG SPRING • MIDLAND, TEXAS 79705  
TELEPHONE: (432) 682-1653 OR (800) 787-1653 • FAX (432) 682-1743  
WWW.TOPOGRAPHIC.COM

# EXHIBIT 2C

## RECLAMATION AND FACILITY DIAGRAM - PRODUCTION FACILITIES DIAGRAM

SECTION 15, TOWNSHIP 25-S, RANGE 33-E, N.M.P.M.  
LEA COUNTY, NEW MEXICO

DETAIL VIEW  
SCALE: 1" = 60'



LEASE NAME & WELL NO.: STREETCAR 15 FED #6H  
#6H LATITUDE N 32.1238602 #6H LONGITUDE W 103.5610609

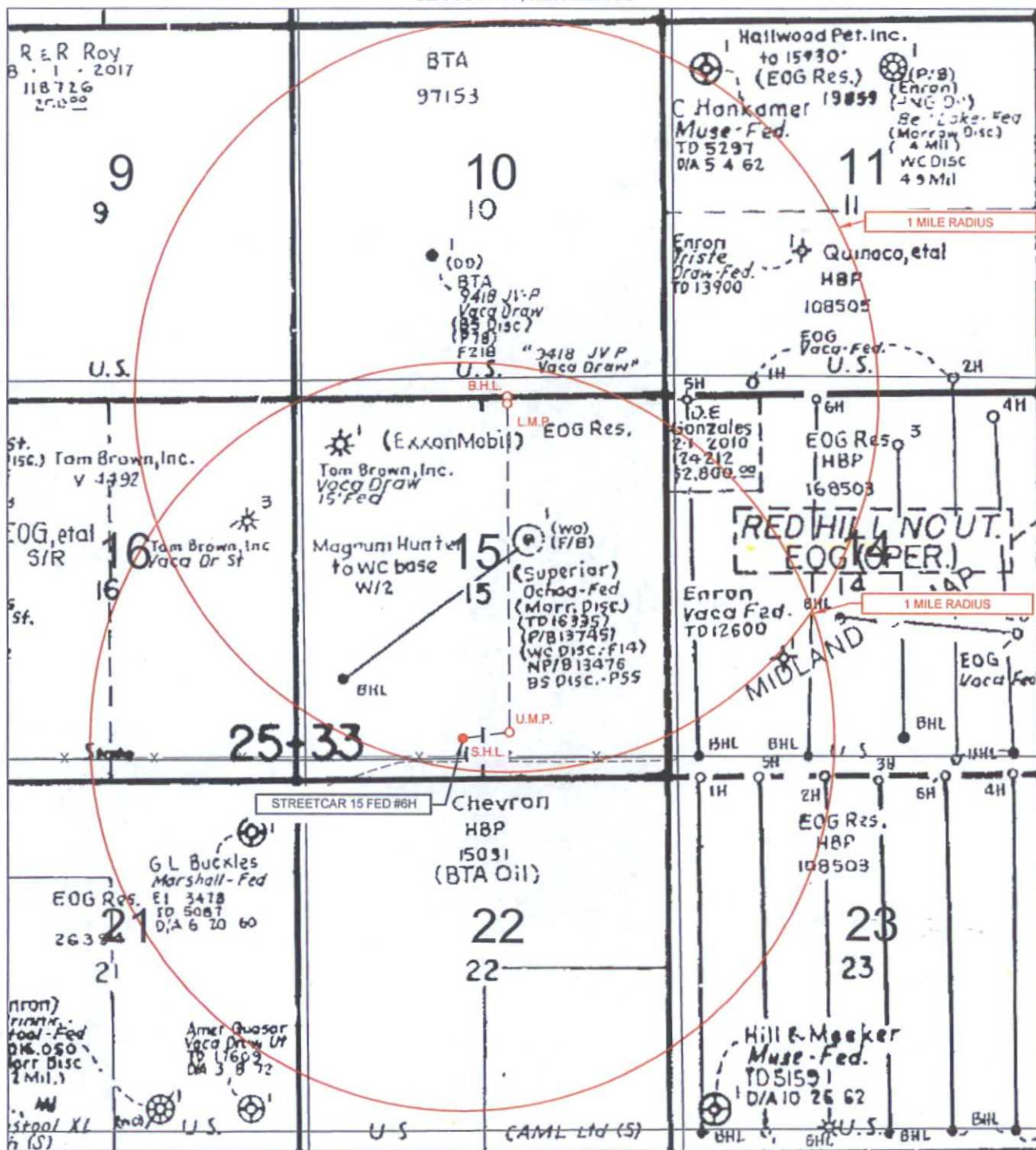
### LEGEND

	500 BBL OIL TANK		FLARE SEPARATOR
	500 BBL WATER TANK		VRU
	36 x 15 HEATER/SEPARATOR		48 X 25 VRT
			FP FLARE
			OP FLARE



# EXHIBIT 3

SECTION 15, TOWNSHIP 25-S, RANGE 33-E, N.M.P.M.  
LEA COUNTY, NEW MEXICO



LEASE NAME & WELL NO.: STREETCAR 15 FED #6H

#6H LATITUDE N 32.1238602

#6H LONGITUDE W 103.5610609

SCALE: NTS

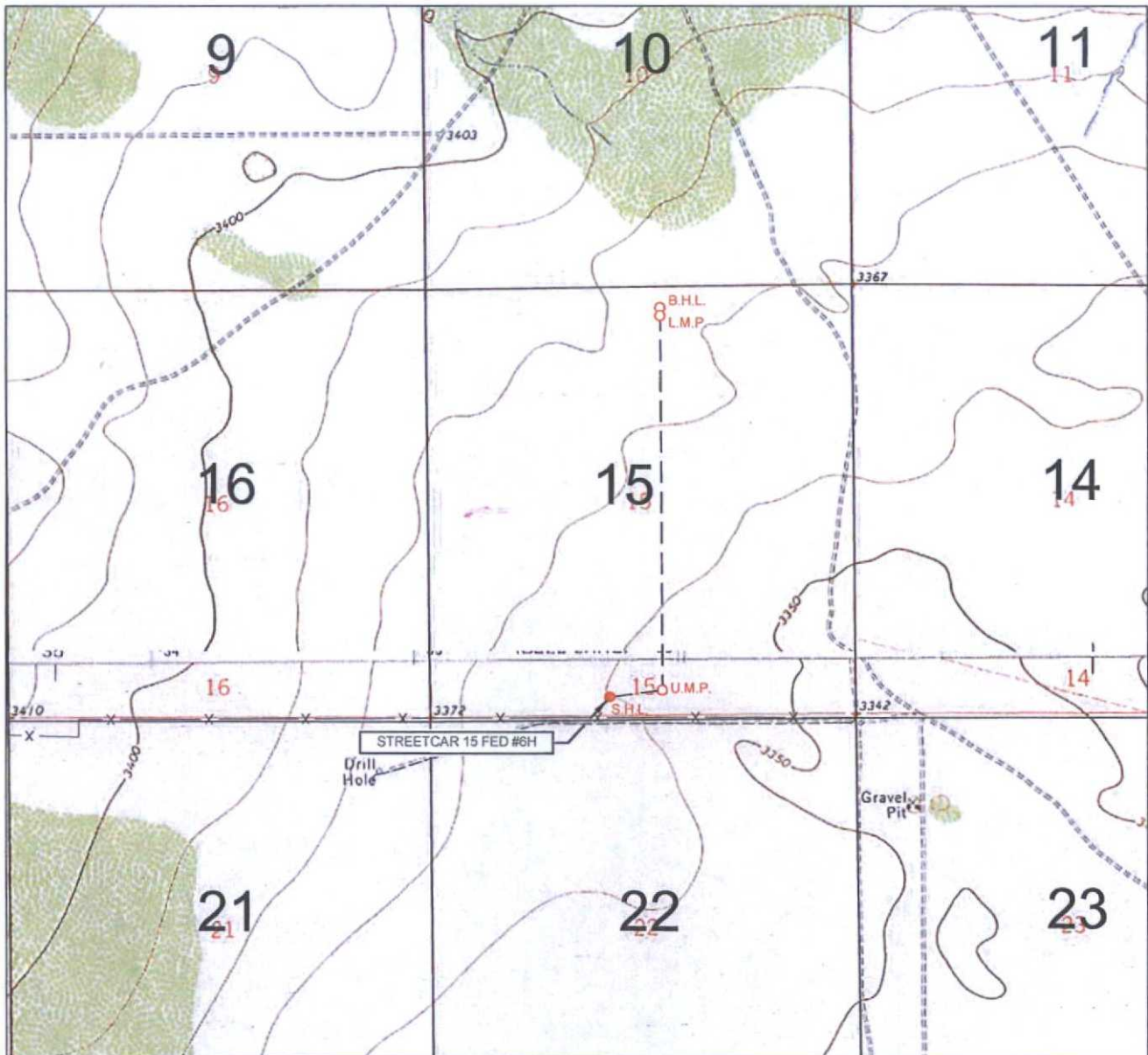
ALL BEARINGS, DISTANCES, AND COORDINATE VALUES CONTAINED HEREON ARE GRID BASED UPON THE NEW MEXICO STATE PLANE COORDINATE SYSTEM, EAST ZONE OF THE NORTH AMERICAN DATUM 1927, U.S. SURVEY FEET

THIS EASEMENT/SERVITUDE LOCATION SHOWN HEREON HAS BEEN SURVEYED ON THE GROUND UNDER MY SUPERVISION AND PREPARED ACCORDING TO THE EVIDENCE FOUND AT THE TIME OF SURVEY, AND DATA PROVIDED BY EOG RESOURCES, INC. THIS CERTIFICATION IS MADE AND LIMITED TO THOSE PERSONS OR ENTITIES SHOWN ON THE FACE OF THIS PLAT AND IS NON-TRANSFERABLE. THIS SURVEY IS CERTIFIED FOR THIS TRANSACTION ONLY.



1400 EVERMAN PARKWAY, Ste. 197 • FT. WORTH, TEXAS 76140  
TELEPHONE: (817) 744-7512 • FAX (817) 744-7548  
2903 NORTH BIG SPRING • MIDLAND, TEXAS 79705  
TELEPHONE: (432) 682-1853 OR (800) 767-1853 • FAX (432) 682-1743  
WWW.TOPOGRAPHIC.COM

# LOCATION & ELEVATION VERIFICATION MAP



LEASE NAME & WELL NO.: STREETCAR 15 FED #6H

SECTION 15 TWP 25-S RGE 33-E SURVEY N.M.P.M.  
 COUNTY LEA STATE NM ELEVATION 3363'  
 DESCRIPTION 250 FSL & 2245 FWL

LATITUDE N 32.1238602 LONGITUDE W 103.5610609



SCALE: 1" = 2000'  
 0' 1000' 2000'

THIS EASEMENT/SERVITUDE LOCATION SHOWN HEREON HAS BEEN SURVEYED ON THE GROUND UNDER MY SUPERVISION AND PREPARED ACCORDING TO THE EVIDENCE FOUND AT THE TIME OF SURVEY, AND DATA PROVIDED BY EOG RESOURCES, INC. THIS CERTIFICATION IS MADE AND LIMITED TO THOSE PERSONS OR ENTITIES SHOWN ON THE FACE OF THIS PLAT AND IS NON-TRANSFERABLE. THIS SURVEY IS CERTIFIED FOR THIS TRANSACTION ONLY.

ALL BEARINGS, DISTANCES, AND COORDINATE VALUES CONTAINED HEREON ARE GRID BASED UPON THE NEW MEXICO STATE PLANE COORDINATE SYSTEM, EAST ZONE OF THE NORTH AMERICAN DATUM 1927, U.S. SURVEY FEET.



**TOPOGRAPHIC**  
 LOYALTY INNOVATION LEGACY

1400 EVERMAN PARKWAY, Ste. 197 • FT. WORTH, TEXAS 76140  
 TELEPHONE: (817) 744-7512 • FAX (817) 744-7548  
 2903 NORTH BIG SPRING • MIDLAND, TEXAS 79705  
 TELEPHONE: (432) 682-1653 OR (800) 767-1653 • FAX (432) 682-1743  
 WWW.TOPOGRAPHIC.COM

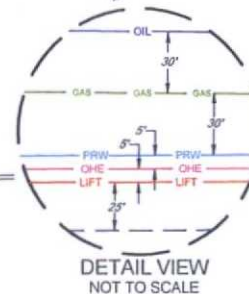
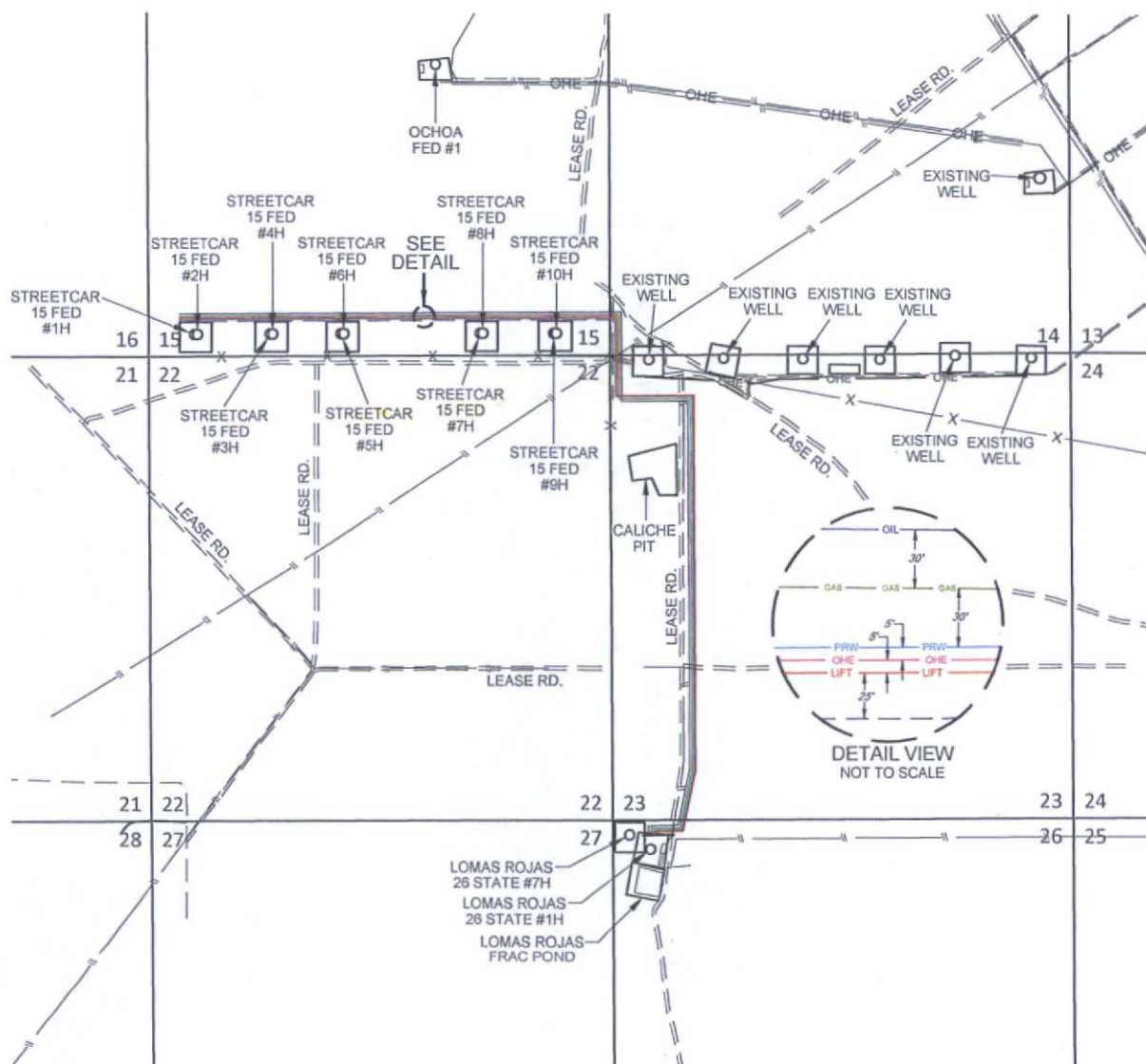


SCALE: 1" = 2000'  
0' 1000' 2000'

# EXHIBIT 5

SECTION 14, 15, 23, 26, TOWNSHIP 25-S, RANGE 33-E, N.M.P.M.  
LEA COUNTY, NEW MEXICO

## STREETCAR 15 FED #1H-#10H INFRASTRUCTURE MAP



STREETCAR 15 FED #1H-#10H INFRASTRUCTURE MAP	REVISION:	
	INT	DATE
DATE: 01/13/15		
FILE: SK_STREETCAR15FED_1H-10H_INFRASTRUCTURE		
DRAWN BY: S.V.		
SHEET: 1 OF 1		

LEASE RD. -TOTAL FOOTAGE.....4964 FT	CHL -TOTAL FOOTAGE.....12089 FT -(WORKING PRESSURE 75-125 PSI)
FROM EXISTING LEASE RD. (SEC. 14) TO STREETCAR 15 FED #1H & #2H.....4964 FT TO STREETCAR 15 FED #3H & #4H.....4094 FT TO STREETCAR 15 FED #5H & #6H.....3279 FT TO STREETCAR 15 FED #7H & #8H.....1673 FT TO STREETCAR 15 FED #9H & #10H.....833 FT	FROM LOMAS ROJAS 26 STATE #1H (SEC. 26) TO STREETCAR 15 FED #1H & #2H.....12089 FT TO STREETCAR 15 FED #3H & #4H.....11219 FT TO STREETCAR 15 FED #5H & #6H.....10404 FT TO STREETCAR 15 FED #7H & #8H.....8798 FT TO STREETCAR 15 FED #9H & #10H.....7958 FT
8" PRODUCED WATERLINE -TOTAL FOOTAGE.....12089 FT -(WORKING PRESSURE 75-125 PSI)	12" GAS SALES LINE -TOTAL FOOTAGE.....12091 FT -(WORKING PRESSURE 75-125 PSI)
FROM LOMAS ROJAS 26 STATE #1H (SEC. 26) TO STREETCAR 15 FED #1H & #2H.....12089 FT TO STREETCAR 15 FED #3H & #4H.....11219 FT TO STREETCAR 15 FED #5H & #6H.....10404 FT TO STREETCAR 15 FED #7H & #8H.....8798 FT TO STREETCAR 15 FED #9H & #10H.....7958 FT	FROM LOMAS ROJAS 26 STATE #1H (SEC. 26) TO STREETCAR 15 FED #1H & #2H.....12089 FT TO STREETCAR 15 FED #3H & #4H.....11221 FT TO STREETCAR 15 FED #5H & #6H.....10406 FT TO STREETCAR 15 FED #7H & #8H.....8800 FT TO STREETCAR 15 FED #9H & #10H.....7960 FT
8" GAS LIFT LINE -TOTAL FOOTAGE.....12089 FT -(WORKING PRESSURE 75-125 PSI)	4" STEEL OIL SALES LINE (ITS OWN ROW BURIED) -TOTAL FOOTAGE.....12093 FT -(WORKING PRESSURE 75-125 PSI)
FROM LOMAS ROJAS 26 STATE #1H (SEC. 26) TO STREETCAR 15 FED #1H & #2H.....12089 FT TO STREETCAR 15 FED #3H & #4H.....11219 FT TO STREETCAR 15 FED #5H & #6H.....10404 FT TO STREETCAR 15 FED #7H & #8H.....8798 FT TO STREETCAR 15 FED #9H & #10H.....7958 FT	FROM LOMAS ROJAS 26 STATE #1H (SEC. 26) TO STREETCAR 15 FED #1H & #2H.....12083 FT TO STREETCAR 15 FED #3H & #4H.....11223 FT TO STREETCAR 15 FED #5H & #6H.....10408 FT TO STREETCAR 15 FED #7H & #8H.....8803 FT TO STREETCAR 15 FED #9H & #10H.....7963 FT