

District I  
1625 N. French Dr., Hobbs, NM 88240  
Phone: (575) 393-6161 Fax: (575) 393-0720  
District II  
811 S. First St., Artesia, NM 88210  
Phone: (575) 748-1283 Fax: (575) 748-0720  
District III  
1000 Rio Brazos Road, Aztec, NM 87410  
Phone: (505) 334-6178 Fax: (505) 334-6170  
District IV  
1220 S. St. Francis Dr., Santa Fe, NM 87505  
Phone: (505) 476-3460 Fax: (505) 476-3462

State of New Mexico  
Energy, Minerals & Natural Resources Department  
OIL CONSERVATION DIVISION  
1220 South St. Francis Dr.  
Santa Fe, NM 87505

Form C-102  
Revised August 1, 2011  
Submit one copy to appropriate  
District Office  
☐ AMENDED REPORT

WELL LOCATION AND ACREAGE DEDICATION PLAT

1 API Number		1 Pool Code		1 Pool Name	
4 Property Code		4 Property Name <b>RED RAIDER 25 BKS STATE</b>			4 Well Number <b>3H</b>
7 OGRID No. <b>270329</b>		8 Operator Name <b>ENDURANCE RESOURCES, LLC</b>			9 Elevation <b>3503.6</b>
10 Surface Location					
UL or lot no. <b>P</b>	Section <b>25</b>	Township <b>24 S</b>	Range <b>33 E</b>	Lot Idn	Feet from the <b>200</b>
				North/South line <b>SOUTH</b>	Feet from the <b>925</b>
				East/West line <b>EAST</b>	County <b>LEA</b>
11 Bottom Hole Location If Different From Surface					
UL or lot no. <b>B</b>	Section <b>25</b>	Township <b>24 S</b>	Range <b>33 E</b>	Lot Idn	Feet from the <b>230</b>
				North/South line <b>NORTH</b>	Feet from the <b>990</b>
				East/West line <b>EAST</b>	County <b>LEA</b>
12 Dedicated Acres		13 Joint or Infill		14 Consolidation Code	
				15 Order No.	

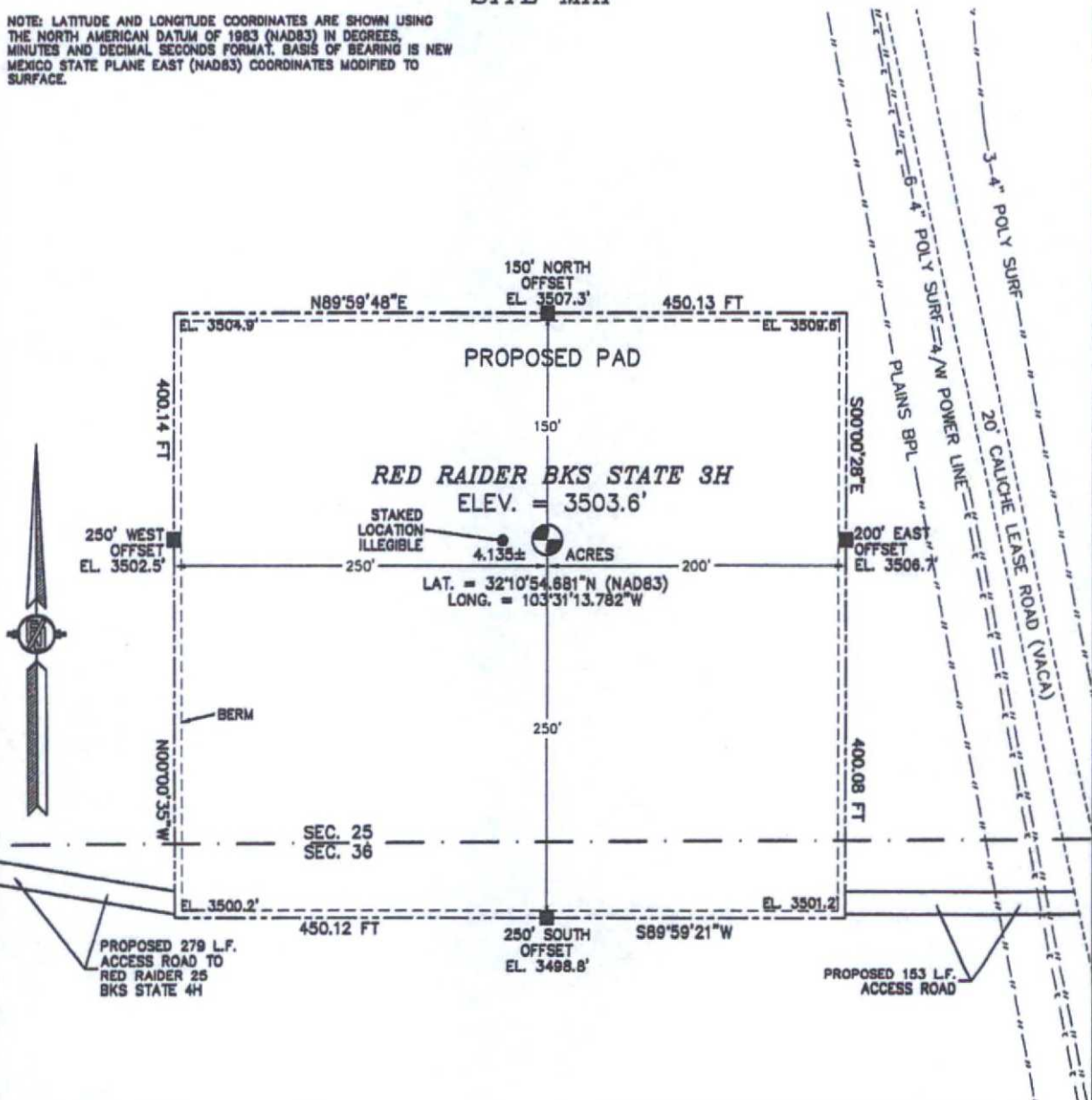
No allowable will be assigned to this completion until all interests have been consolidated or a non-standard unit has been approved by the division.

<p>N89°43'58"E 2642.27 FT</p> <p>NW CORNER SEC. 25 LAT. = 32°11'45.054"N LONG. = 103°32'04.511"W</p> <p>N/4 CORNER SEC. 25 SCALED</p> <p>BOTTOM OF HOLE LAT. = 32°11'42.658"N LONG. = 103°31'14.543"W</p> <p>NE CORNER SEC. 25 LAT. = 32°11'44.905"N LONG. = 103°31'03.025"W</p> <p>W/4 CORNER SEC. 25 LAT. = 32°41'18.919"N LONG. = 103°32'04.498"W</p> <p>E/4 CORNER SEC. 25 LAT. = 32°11'48.796"N LONG. = 103°31'03.020"W</p> <p>SW CORNER SEC. 25 LAT. = 32°10'52.798"N LONG. = 103°32'04.491"W</p> <p>S/4 CORNER SEC. 25 LAT. = 32°10'52.738"N LONG. = 103°31'33.775"W</p> <p>SE CORNER SEC. 25 LAT. = 32°10'52.682"N LONG. = 103°31'03.021"W</p> <p>RED RAIDER BKS STATE 3H ELEV. = 3503.6' LAT. = 32°10'54.681"N (NAD83) LONG. = 103°31'13.782"W</p> <p>NOTE: LATITUDE AND LONGITUDE COORDINATES ARE SHOWN USING THE NORTH AMERICAN DATUM OF 1983 (NAD83) IN DEGREES MINUTES DECIMAL SECONDS FORMAT. BASIS OF BEARING IS NEW MEXICO STATE PLANE EAST (NAD83) COORDINATES MODIFIED TO SURFACE.</p> <p>200'</p> <p>925'</p> <p>230'</p> <p>990'</p> <p>500°26'39"E 2638.99 FT</p> <p>500°25'58"E 2639.51 FT</p> <p>589°42'14"W 2640.38 FT</p> <p>589°41'26"W 2643.67 FT</p>		<p><b>" OPERATOR CERTIFICATION</b></p> <p>I hereby certify that the information contained herein is true and complete to the best of my knowledge and belief, and that this organization either owns a working interest or unleased mineral interest in the land including the proposed bottom hole location or has a right to drill this well at this location pursuant to a contract with an owner of such a mineral or working interest, or to a voluntary pooling agreement or a compulsory pooling order heretofore entered by the division.</p> <p><i>Tinlee Tilton</i> 10/13/2015 Signature Date</p> <p><b>TINLEE TILTON</b> Printed Name</p> <p><i>tinlee@enduranceresources</i> E-mail Address</p> <p><b>llc.com</b></p> <p><b>"SURVEYOR CERTIFICATION</b></p> <p>I hereby certify that the well location shown on this plat was plotted from field notes of actual surveys made by me or under my supervision, and that the same is true and correct to the best of my belief.</p> <p>OCTOBER 1, 2015 Date of Survey</p> <p><i>FILIMON F. JARAMILLO</i> Signature and Seal of Registered Professional Surveyor</p> <p>Certificate Number FILIMON F. JARAMILLO, PLS 12797 SURVEY NO. 4260</p>
--	--	--

OCT 15 2015

**SECTION 25, TOWNSHIP 24 SOUTH, RANGE 33 EAST, N.M.P.M.  
LEA COUNTY, STATE OF NEW MEXICO  
SITE MAP**

NOTE: LATITUDE AND LONGITUDE COORDINATES ARE SHOWN USING THE NORTH AMERICAN DATUM OF 1983 (NAD83) IN DEGREES, MINUTES AND DECIMAL SECONDS FORMAT. BASIS OF BEARING IS NEW MEXICO STATE PLANE EAST (NAD83) COORDINATES MODIFIED TO SURFACE.



0 10 50 100 200

SCALE 1" = 100'

DIRECTIONS TO LOCATION

FROM THE INTERSECTION OF STATE HWY 128 & CO. RD. 21 (DELAWARE BASIN) GO WEST ON STATE HWY 128 FOR APPROX. 1.4 MILES. GO SOUTHEAST ON CALICHE LEASE ROAD (VACA) FOR APPROX. 2 MILES TO BEGIN ROAD SURVEY. GO WEST APPROX. 153' TO SOUTHEAST CORNER OF PAD.

**ENDURANCE RESOURCES, LLC  
RED RAIDER BKS STATE 3H  
LOCATED 200 FT. FROM THE SOUTH LINE  
AND 925 FT. FROM THE EAST LINE OF  
SECTION 25, TOWNSHIP 24 SOUTH,  
RANGE 33 EAST, N.M.P.M.  
LEA COUNTY, STATE OF NEW MEXICO**

OCTOBER 7, 2015

SURVEY NO. 4280

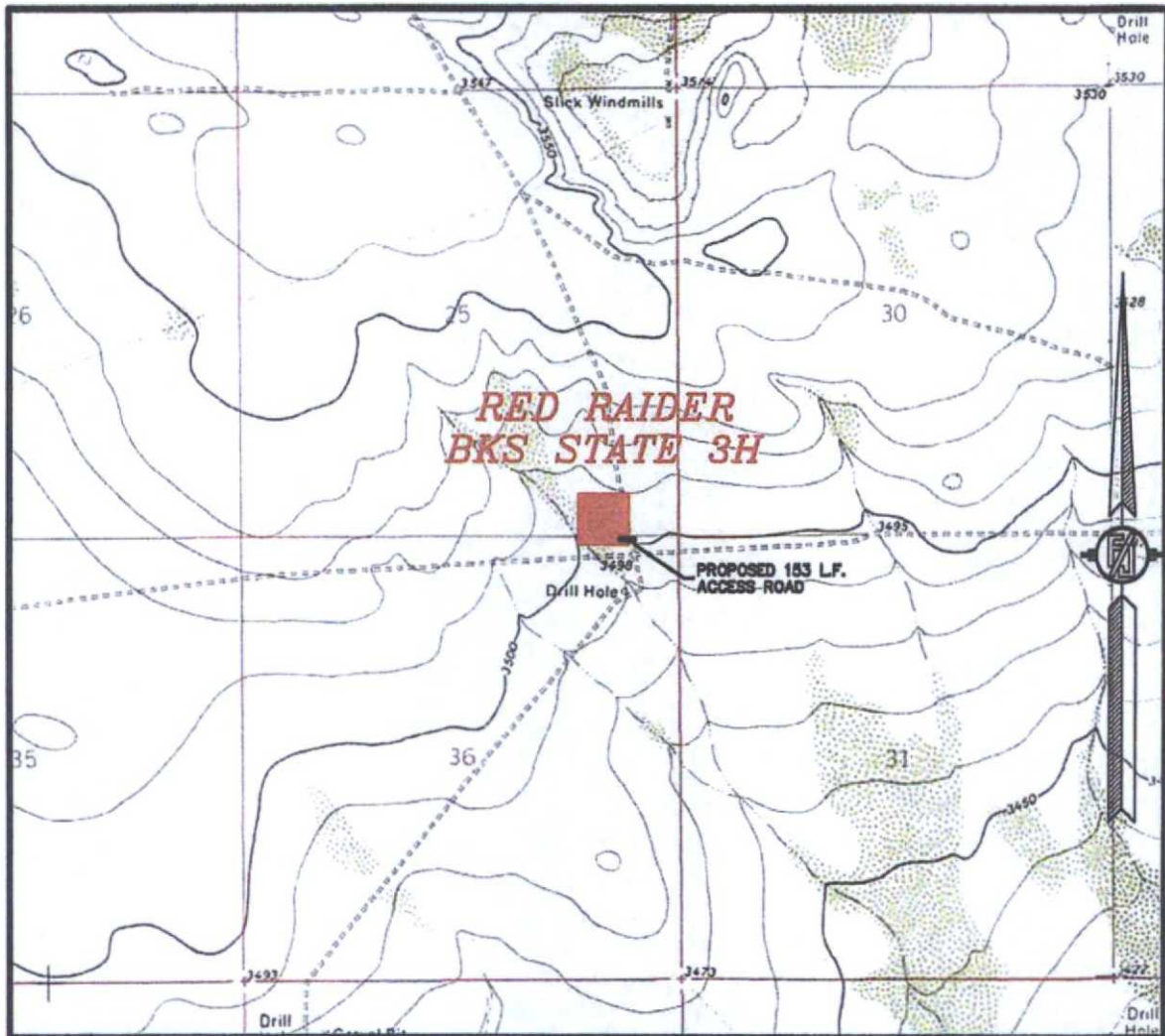
**MADRON SURVEYING, INC.**

301 SOUTH CANAL  
(575) 234-3341

**CARLSBAD, NEW MEXICO**



SECTION 25, TOWNSHIP 24 SOUTH, RANGE 33 EAST, N.M.P.M.  
LEA COUNTY, STATE OF NEW MEXICO  
LOCATION VERIFICATION MAP



USGS QUAD MAP:  
BELL LAKE

NOT TO SCALE

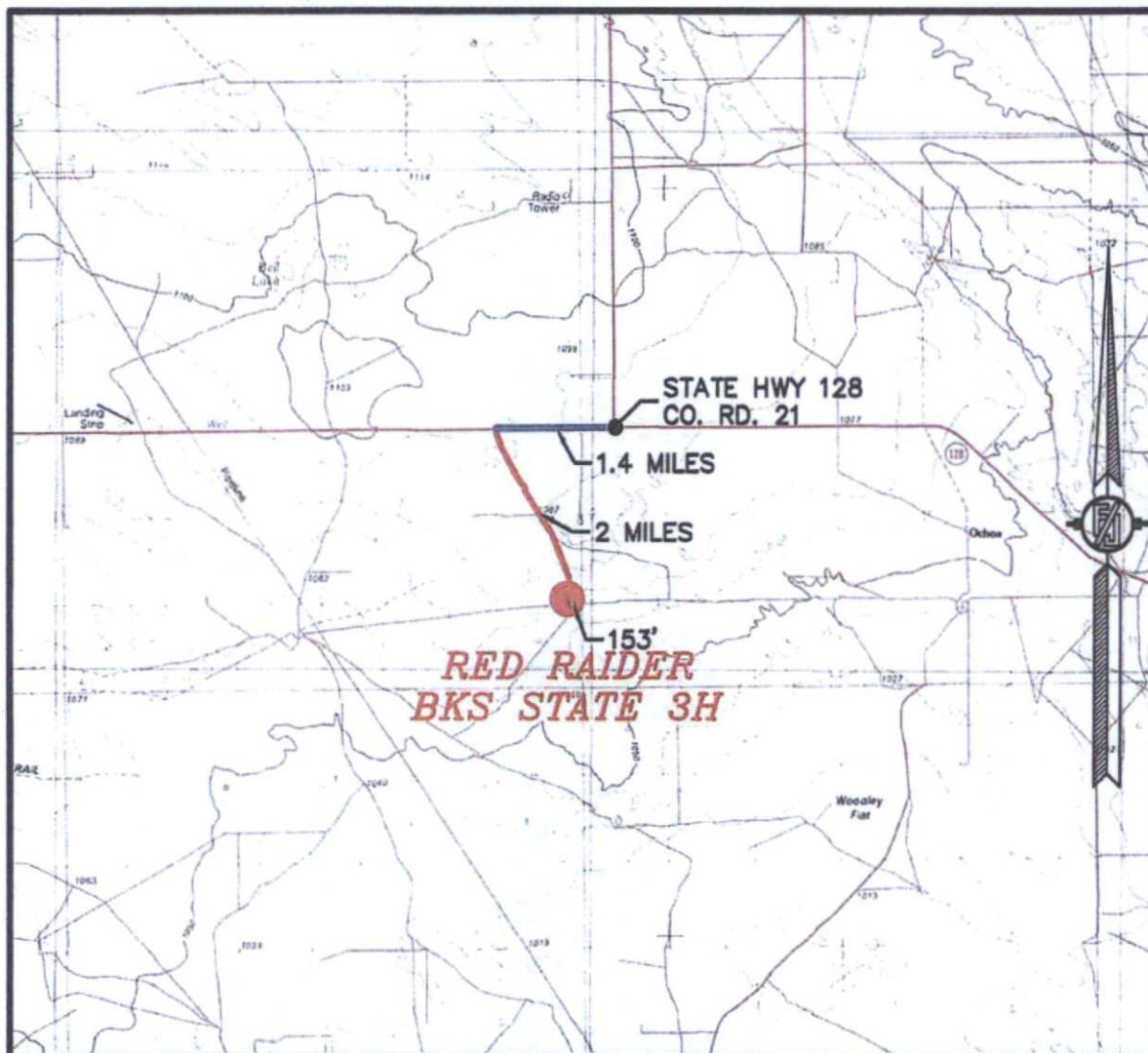
ENDURANCE RESOURCES, LLC  
RED RAIDER BKS STATE 3H  
LOCATED 200 FT. FROM THE SOUTH LINE  
AND 925 FT. FROM THE EAST LINE OF  
SECTION 25, TOWNSHIP 24 SOUTH,  
RANGE 33 EAST, N.M.P.M.  
LEA COUNTY, STATE OF NEW MEXICO

OCTOBER 7, 2015

MADRON SURVEYING, INC. 301 SOUTH CANAL (575) 234-3341 CARLSBAD, NEW MEXICO

SURVEY NO. 4260

SECTION 25, TOWNSHIP 24 SOUTH, RANGE 33 EAST, N.M.P.M.  
LEA COUNTY, STATE OF NEW MEXICO  
VICINITY MAP



DISTANCES IN MILES

NOT TO SCALE

**DIRECTIONS TO LOCATION**

FROM THE INTERSECTION OF STATE HWY 128 & CO. RD. 21  
(DELAWARE BASIN) GO WEST ON STATE HWY 128 FOR APPROX. 1.4  
MILES. GO SOUTHEAST ON CALICHE LEASE ROAD (VACA) FOR  
APPROX. 2 MILES TO BEGIN ROAD SURVEY. GO WEST APPROX. 153'  
TO SOUTHEAST CORNER OF PAD.

**ENDURANCE RESOURCES, LLC**  
**RED RAIDER BKS STATE 3H**  
LOCATED 200 FT. FROM THE SOUTH LINE  
AND 925 FT. FROM THE EAST LINE OF  
SECTION 25, TOWNSHIP 24 SOUTH,  
RANGE 33 EAST, N.M.P.M.  
LEA COUNTY, STATE OF NEW MEXICO

OCTOBER 7, 2015

MADRON SURVEYING, INC. 301 SOUTH CANAL (575) 234-3341 CARLSBAD, NEW MEXICO

SURVEY NO. 4260



SECTION 25, TOWNSHIP 24 SOUTH, RANGE 33 EAST, N.M.P.M.  
LEA COUNTY, STATE OF NEW MEXICO  
AERIAL PHOTO



NOT TO SCALE  
AERIAL PHOTO:  
GOOGLE EARTH  
FEB. 2014

ENDURANCE RESOURCES, LLC  
RED RAIDER BKS STATE 3H  
LOCATED 200 FT. FROM THE SOUTH LINE  
AND 925 FT. FROM THE EAST LINE OF  
SECTION 25, TOWNSHIP 24 SOUTH,  
RANGE 33 EAST, N.M.P.M.  
LEA COUNTY, STATE OF NEW MEXICO

OCTOBER 7, 2015

SURVEY NO. 4260

MADRON SURVEYING, INC. 301 SOUTH CANAL (575) 234-3341 CARLSBAD, NEW MEXICO



SECTION 25, TOWNSHIP 24 SOUTH, RANGE 33 EAST, N.M.P.M.  
LEA COUNTY, STATE OF NEW MEXICO  
AERIAL ACCESS ROUTE MAP



NOT TO SCALE  
AERIAL PHOTO:  
GOOGLE EARTH  
FEB. 2014

**ENDURANCE RESOURCES, LLC**  
**RED RAIDER BKS STATE 3H**  
LOCATED 200 FT. FROM THE SOUTH LINE  
AND 925 FT. FROM THE EAST LINE OF  
SECTION 25, TOWNSHIP 24 SOUTH,  
RANGE 33 EAST, N.M.P.M.  
LEA COUNTY, STATE OF NEW MEXICO

OCTOBER 7, 2015

SURVEY NO. 4260

MADRON SURVEYING, INC. 301 SOUTH CANAL (575) 234-3341 CARLSBAD, NEW MEXICO