

DISTRICT I
1625 N. French Dr., Hobbs, NM 88240
Phone: (575) 393-6161 Fax: (575) 393-0720

DISTRICT II
811 S. First St., Artesia, NM 88210
Phone: (575) 748-1283 Fax: (575) 748-9720

DISTRICT III
1000 Rio Brazos Road, Aztec, NM 87410
Phone: (505) 334-6178 Fax: (505) 334-6170

DISTRICT IV
1220 S. St. Francis Dr., Santa Fe, NM 87505
Phone: (505) 476-3460 Fax: (505) 476-3462

State of New Mexico
Energy, Minerals & Natural Resources Department
OIL CONSERVATION DIVISION
1220 South St. Francis Dr.
Santa Fe, New Mexico 87505

Form C-102
Revised August 1, 2011
Submit one copy to appropriate
District Office

HOBBS OGD
OCT 16 2015
AMENDED REPORT

WELL LOCATION AND ACREAGE DEDICATION PLAT

API Number 30-025-42880	Pool Code 22900	Pool Name EUMICE; BLI-TU-DR, NORTH
Property Code 22503	Property Name NORTHEAST DRINKARD UNIT	
OGRID No. 873	Operator Name APACHE CORPORATION	Well Number 431
		Elevation 3433'

Surface Location

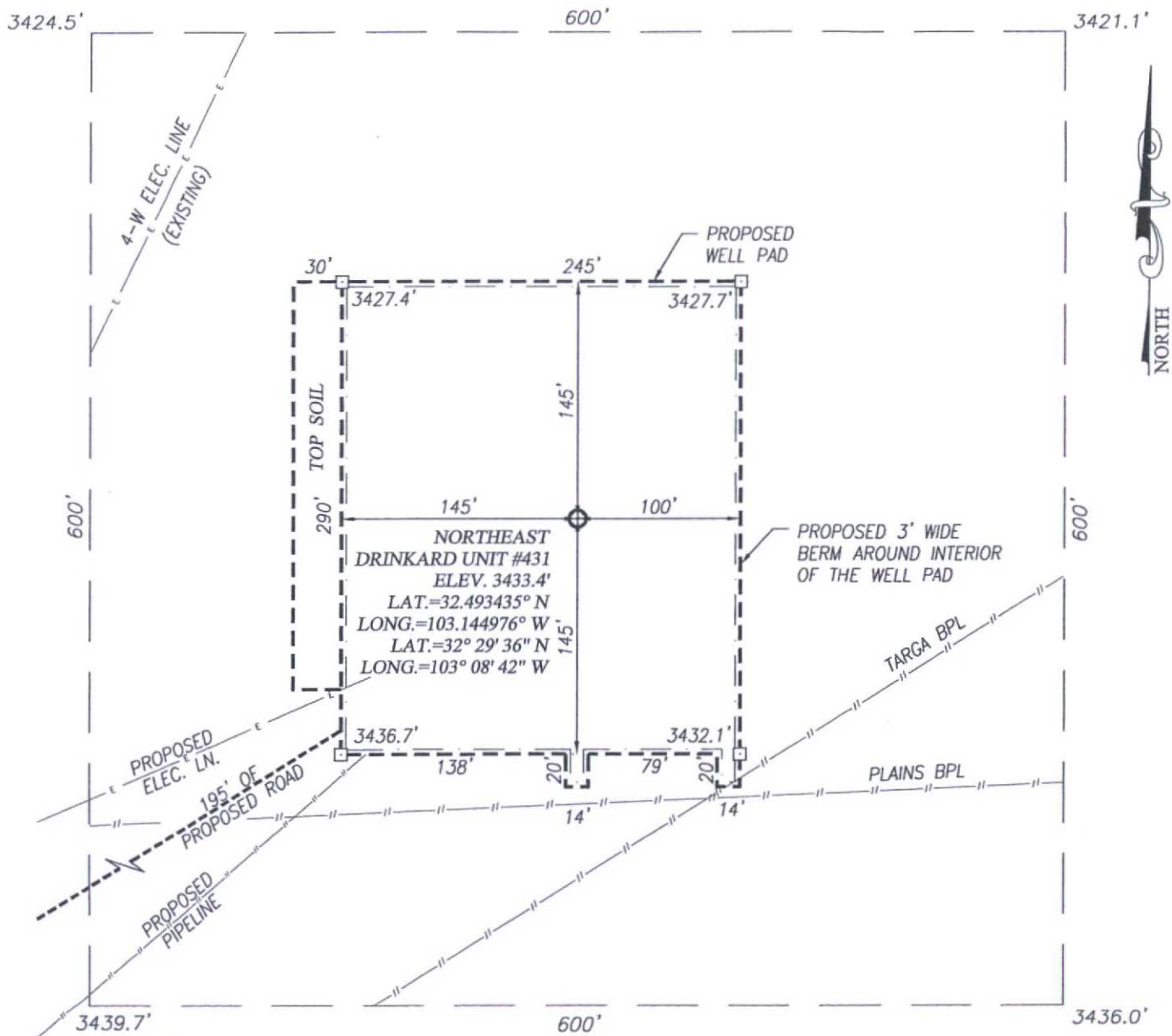
UL or lot No.	Section	Township	Range	Lot Idn	Feet from the	North/South line	Feet from the	East/West line	County
H	10	21-S	37-E		2600	NORTH	955	EAST	LEA

Bottom Hole Location If Different From Surface

UL or lot No.	Section	Township	Range	Lot Idn	Feet from the	North/South line	Feet from the	East/West line	County
Dedicated Acres	Joint or Infill	Consolidation Code	Order No.						

NO ALLOWABLE WILL BE ASSIGNED TO THIS COMPLETION UNTIL ALL INTERESTS HAVE BEEN CONSOLIDATED OR A NON-STANDARD UNIT HAS BEEN APPROVED BY THE DIVISION

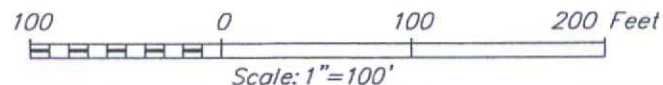
<p>GEODETC COORDINATES NAD 27 NME</p> <p>SURFACE LOCATION Y=545265.9 N X=866409.3 E</p> <p>LAT.=32.493435' N LONG.=103.144976' W</p> <p>LAT.=32° 29' 36" N LONG.=103° 08' 42" W</p>		<p>OPERATOR CERTIFICATION</p> <p>I hereby certify that the information herein is true and complete to the best of my knowledge and belief, and that this organization either owns a working interest or unleased mineral interest in the land including the proposed bottom hole location or has a right to drill this well at this location pursuant to a contract with an owner of such mineral or working interest, or to a voluntary pooling agreement or a compulsory pooling order heretofore entered by the division.</p> <p><i>Sorina L Flores</i> 6/13/14 Signature Date</p> <p>Sorina L Flores Printed Name</p> <p>Sorina.Flores@apachecorp.com E-mail Address</p>
	<p>SURVEYOR CERTIFICATION</p> <p>I hereby certify that the well location shown on this plat was plotted from field notes of actual surveys made by me or under my supervision, and that the same is true and correct to the best of my belief.</p> <p>JANUARY 22, 2014</p> <p>Date of Survey</p> <p>Signature & Seal of Professional Surveyor:</p>	
	<p>Certificate Number</p> <p>BKL</p>	<p>Gary G. Eidson 12641</p> <p>Ronald J. Eidson 3239</p> <p>JWSC W.O.: 13.11.1372</p>
	<p>OCT 19 2015</p>	



NOTE:
SEE "LOCATION VERIFICATION MAP"
FOR PROPOSED ROAD LOCATION.

DIRECTIONS TO LOCATION

FROM THE INTERSECTION OF ST. HIGHWAY 248 AND HILL RD.
(CO. RD. 34) GO NORTH ON ST. HWY. 248 APPROX. 0.5 MILES;
TURN RIGHT AND GO EAST ON NORTHEAST DRINKARD UNIT ROAD
(NEDU ON MAP) APPROX. 0.5 MILES; VEER LEFT AND FOLLOW
WINDING ROAD NORTHEAST APPROX. 0.1 MILES; TURN RIGHT
AND GO EAST APPROX. 0.1 MILES; TURN LEFT AND GO NORTH
APPROX. 0.1 MILES TO AN EXISTING WELL PAD. FROM THE
NORTHEAST CORNER OF THIS EXISTING WELL PAD FOLLOW A
PROPOSED STAKED ROAD 195 FEET NORTHWEST. THIS LOCATION
IS NORTHWEST APPROX. 195 FEET.



APACHE CORPORATION

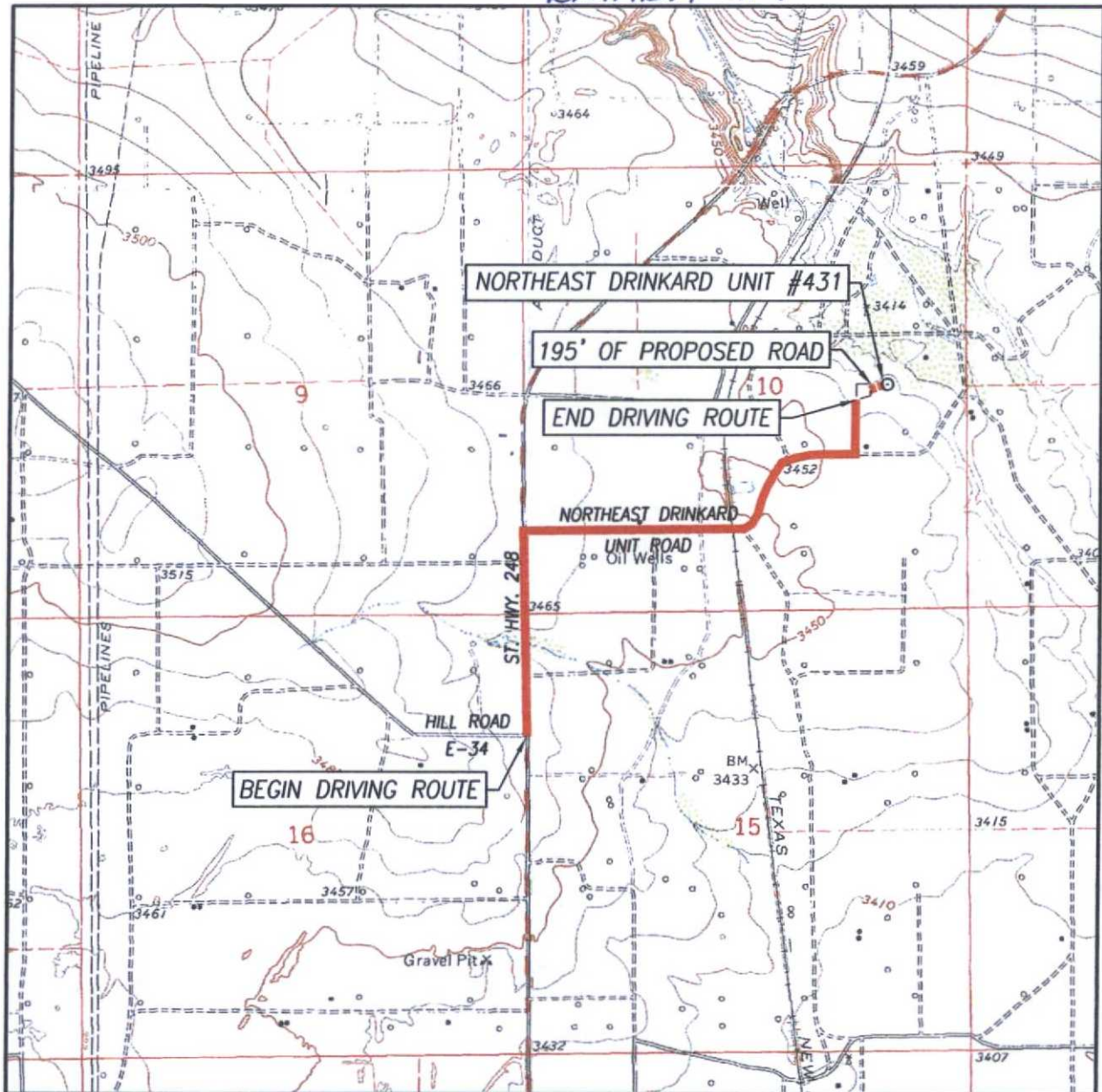
NORTHEAST DRINKARD UNIT #431 WELL
LOCATED 2600 FEET FROM THE NORTH LINE
AND 955 FEET FROM THE EAST LINE OF SECTION 10,
TOWNSHIP 21 SOUTH, RANGE 37 EAST, N.M.P.M.,
LEA COUNTY, NEW MEXICO

PROVIDING SURVEYING SERVICES
SINCE 1946
JOHN WEST SURVEYING COMPANY
412 N. DAL PASO
HOBBS, N.M. 88240
(575) 393-3117 www.jwsc.biz

Survey Date: 1/22/14	CAD Date: 1/27/14	Drawn By: BKL
W.O. No.: 13111372	Rev: .	Rel. W.O.: Sheet 1 of 1

LOCATION VERIFICATION MAP

EXHIBIT #1



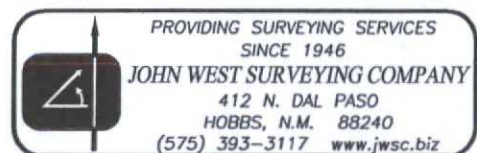
SCALE: 1" = 2000'

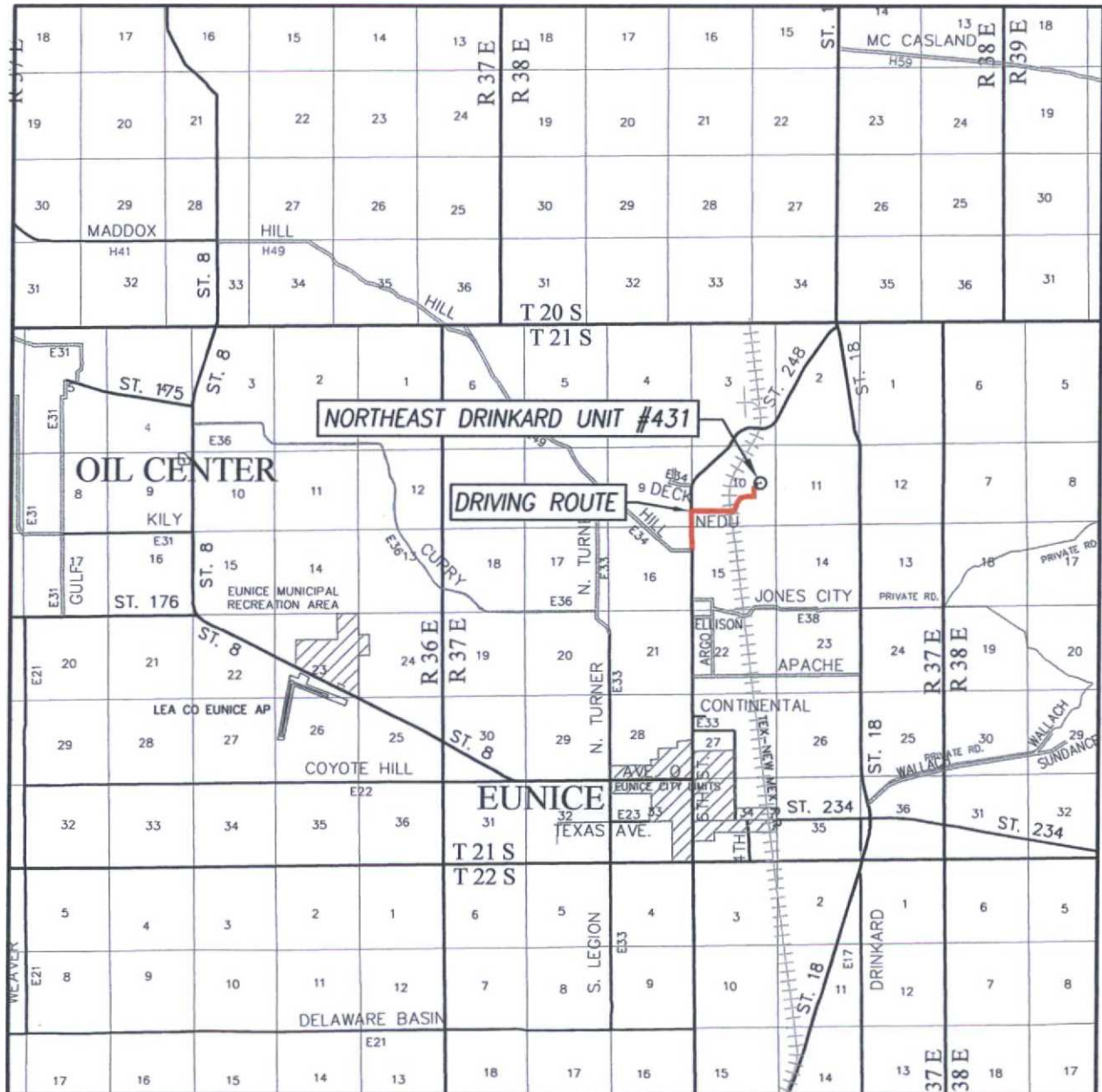
DIRECTIONS TO LOCATION

CONTOUR INTERVAL:
EUNICE, N.M. - 10'

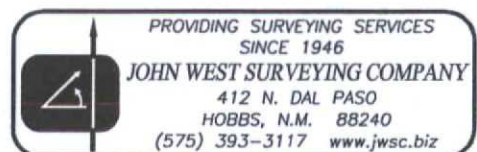
SEC. 10 TWP. 21-S RGE. 37-E
 SURVEY N.M.P.M.
 COUNTY LEA STATE NEW MEXICO
 DESCRIPTION 2600' FNL & 955' FEL
 ELEVATION 3433'
 OPERATOR APACHE CORPORATION
 LEASE NORTHEAST DRINKARD UNIT
 U.S.G.S. TOPOGRAPHIC MAP
 EUNICE, N.M.

FROM THE INTERSECTION OF ST. HIGHWAY 248 AND HILL RD. (CO. RD. 34) GO NORTH ON ST. HWY. 248 APPROX. 0.5 MILES; TURN RIGHT AND GO EAST ON NORTHEAST DRINKARD UNIT ROAD (NEDU ON MAP) APPROX. 0.5 MILES; VEER LEFT AND FOLLOW WINDING ROAD NORTHEAST APPROX. 0.1 MILES; TURN RIGHT AND GO EAST APPROX. 0.1 MILES; TURN LEFT AND GO NORTH APPROX. 0.1 MILES TO AN EXISTING WELL PAD. FROM THE NORTHEAST CORNER OF THIS EXISTING WELL PAD FOLLOW A PROPOSED STAKED ROAD 195 FEET NORTHWEST. THIS LOCATION IS NORTHWEST APPROX. 195 FEET.




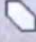



DRIVING ROUTE: SEE LOCATION VERIFICATION MAP

LEASE NORTHEAST DRINKARD UNIT

Legend

 NEDU 431

 NEDU 431 well pad

 Proposed flowline

NEDU 431 - Proposed Flowline EXHIBIT 1A

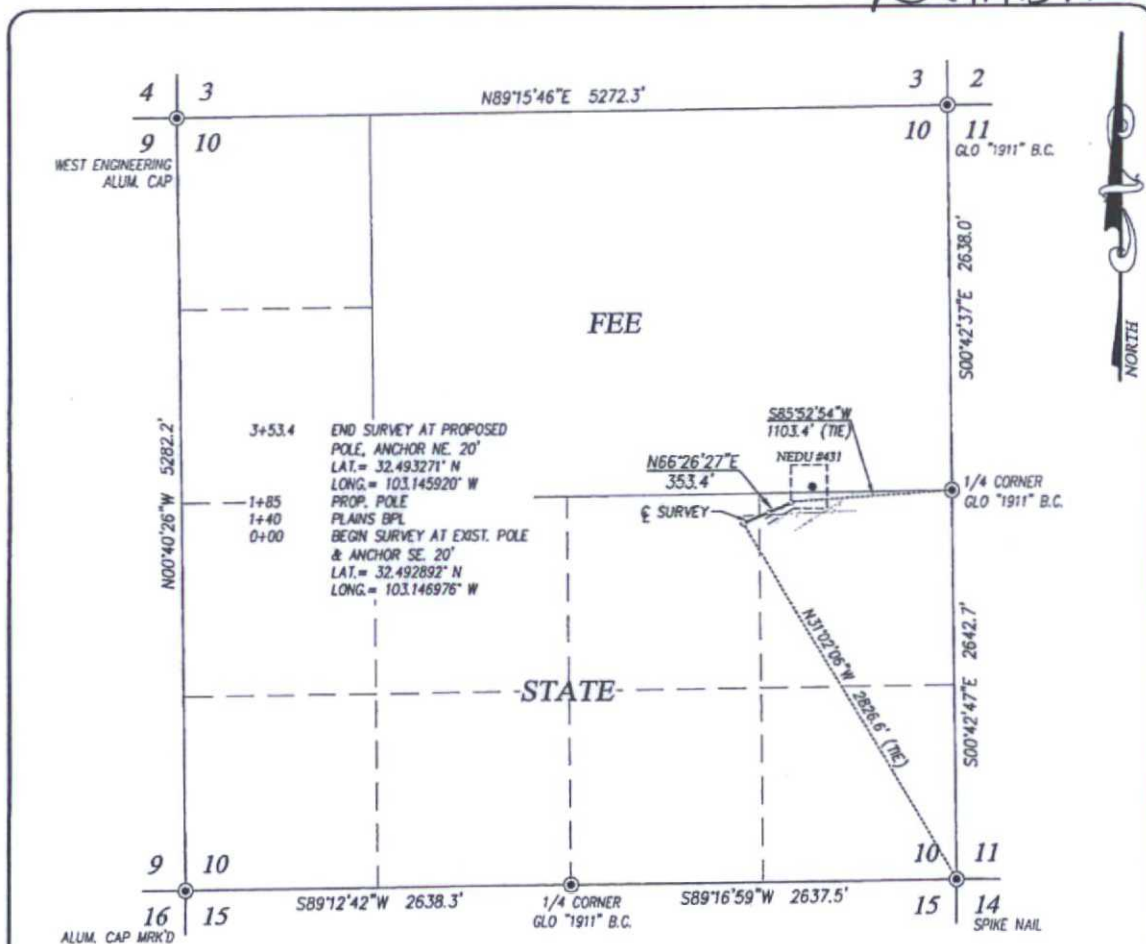
Apache proposes to install approx 3460' of 3" NUP1 rated 300psi up to 140 deg surface flowline to the NEDU Central Battery (flowline rated 300psi, WP: 80psi, kill switches & chokes will be installed to prevent exceeding 125psi for above ground pipelines)

NEDU 431

NEDU 431

NEDU TOWER



**DESCRIPTION**

A STRIP OF LAND 30.0 FEET WIDE CROSSING STATE OF NEW MEXICO LAND IN SECTION 10, TOWNSHIP 21 SOUTH, RANGE 37 EAST, N.M.P.M., EDDY COUNTY, NEW MEXICO, AND BEING 15.0 FEET LEFT AND 15.0 FEET RIGHT OF THE FOLLOWING DESCRIBED CENTERLINE SURVEY:

BEGINNING AT A POINT IN THE NORTHWEST QUARTER OF THE SOUTHEAST QUARTER OF SECTION 10, WHICH LIES N31°02'06"W 2826.6 FEET FROM THE SOUTHEAST CORNER OF SAID SECTION; THEN N66°26'27"E 353.4 FEET TO A POINT IN THE NORTHEAST QUARTER OF THE SOUTHEAST QUARTER OF SAID SECTION, WHICH LIES S85°52'54"W 1103.4 FEET FROM THE EAST QUARTER CORNER OF SAID SECTION.

SAID STRIP OF LAND BEING 353.4 FEET OR 21.42 RODS IN LENGTH, CONTAINING 0.243 ACRES MORE OR LESS AND BEING ALLOCATED BY FORTIES AS FOLLOWS:

NW/4 SE/4 7.15 RODS OR 0.081 ACRES
NE/4 SE/4 14.27 RODS OR 0.162 ACRES

NOTE

- 1) BEARINGS SHOWN HEREON ARE MERCATOR GRID AND CONFORM TO THE NEW MEXICO COORDINATE SYSTEM "NEW MEXICO EAST ZONE" NORTH AMERICAN DATUM 1983. DISTANCES ARE SURFACE VALUES.
- 2) LATITUDE AND LONGITUDE VALUES SHOWN HEREON ARE RELATIVE TO THE NORTH AMERICAN DATUM 1983 (NAD83).

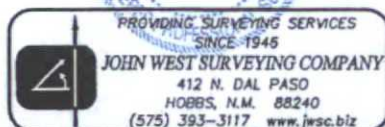
LEGEND

⊙ DENOTES FOUND CORNER AS NOTED

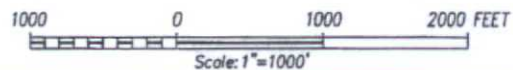
I, GARY G. EIDSON, NEW MEXICO PROFESSIONAL SURVEYOR No. 12641, DO HEREBY CERTIFY THAT THIS SURVEY PLAT AND THE ACTUAL SURVEY ON THE GROUND UPON WHICH IT IS BASED WERE PERFORMED BY ME OR UNDER MY DIRECT SUPERVISION; THAT I AM RESPONSIBLE FOR THIS SURVEY; THAT THIS SURVEY MEETS THE MINIMUM STANDARDS FOR SURVEYING IN NEW MEXICO; AND THAT IT IS TRUE AND CORRECT TO THE BEST OF MY KNOWLEDGE AND BELIEF.

GARY G. EIDSON

DATE: 2/9/14



PROVIDING SURVEYING SERVICES
SINCE 1945
JOHN WEST SURVEYING COMPANY
412 N. DAL PASO
HOBBBS, N.M. 88240
(575) 393-3117 www.jwsc.biz

**APACHE CORPORATION**

SURVEY OF AN ELECTRIC LINE
CROSSING SECTION 10,
TOWNSHIP 21 SOUTH, RANGE 37 EAST, N.M.P.M.
LEA COUNTY, NEW MEXICO

Survey Date: 1/22/14	CAD Date: 2/3/14	Drawn By: ACK
W.O. No.: 14110081	Rev.:	Rel. W.O.:
		Sheet 1 of 1

APACHE CORPORATION

NORTHEAST DRINKARD UNIT #431

2600' FNL & 955' FEL

SEC: 10 T21S R37E

1 MILE RADIUS



POSTED WELL DATA

Well Name
Well Number

WELL SYMBOLS

- BTD LOCATION
- Dry Hole, With Show of Gas
- Dry Hole, With Show of Oil
- Dry Hole
- Gas Well
- Key Injection well
- Location Only
- Large Square
- Oil & Gas Well
- Oil Well
- Plugged and Abandoned
- Active Producer
- Plugged Injection
- Active Injection
- New Location
- PERMITDI
- Plugged Oil Well
- Plugged Gas Well
- Injection Well
- Ramli Locations

June 18, 2014

Exhibit #2

