

District I  
1625 N. French Dr., Hobbs, NM 88240  
Phone: (575) 393-6161 Fax: (575) 393-0720  
District II  
811 S. First St., Artesia, NM 88210  
Phone: (575) 748-1283 Fax: (575) 748-9720  
District III  
1000 Rio Brazos Road, Aztec, NM 87410  
Phone: (505) 334-6178 Fax: (505) 334-6170  
District IV  
1220 S. St. Francis Dr., Santa Fe, NM 87505  
Phone: (505) 476-3460 Fax: (505) 476-3462

State of New Mexico  
Energy, Minerals & Natural Resources  
Department  
OIL CONSERVATION DIVISION  
1220 South St. Francis Dr.  
Santa Fe, NM 87505

HOBBS OCD

OCT 19 2015

RECEIVED

FORM C-102

Revised August 1, 2011

Submit one copy to appropriate

District Office

☐ AMENDED REPORT

WELL LOCATION AND ACREAGE DEDICATION PLAT

<sup>1</sup> API Number 30-025- <b>42887</b>	<sup>2</sup> Pool Code 51020	<sup>3</sup> Pool Name Red Hills; Lower Bone Spring
<sup>4</sup> Property Code 40259	<sup>5</sup> Property Name VACA 11 FED	<sup>6</sup> Well Number #403H
<sup>7</sup> OGRID No. 7377	<sup>8</sup> Operator Name EOG RESOURCES, INC.	<sup>9</sup> Elevation 3364'

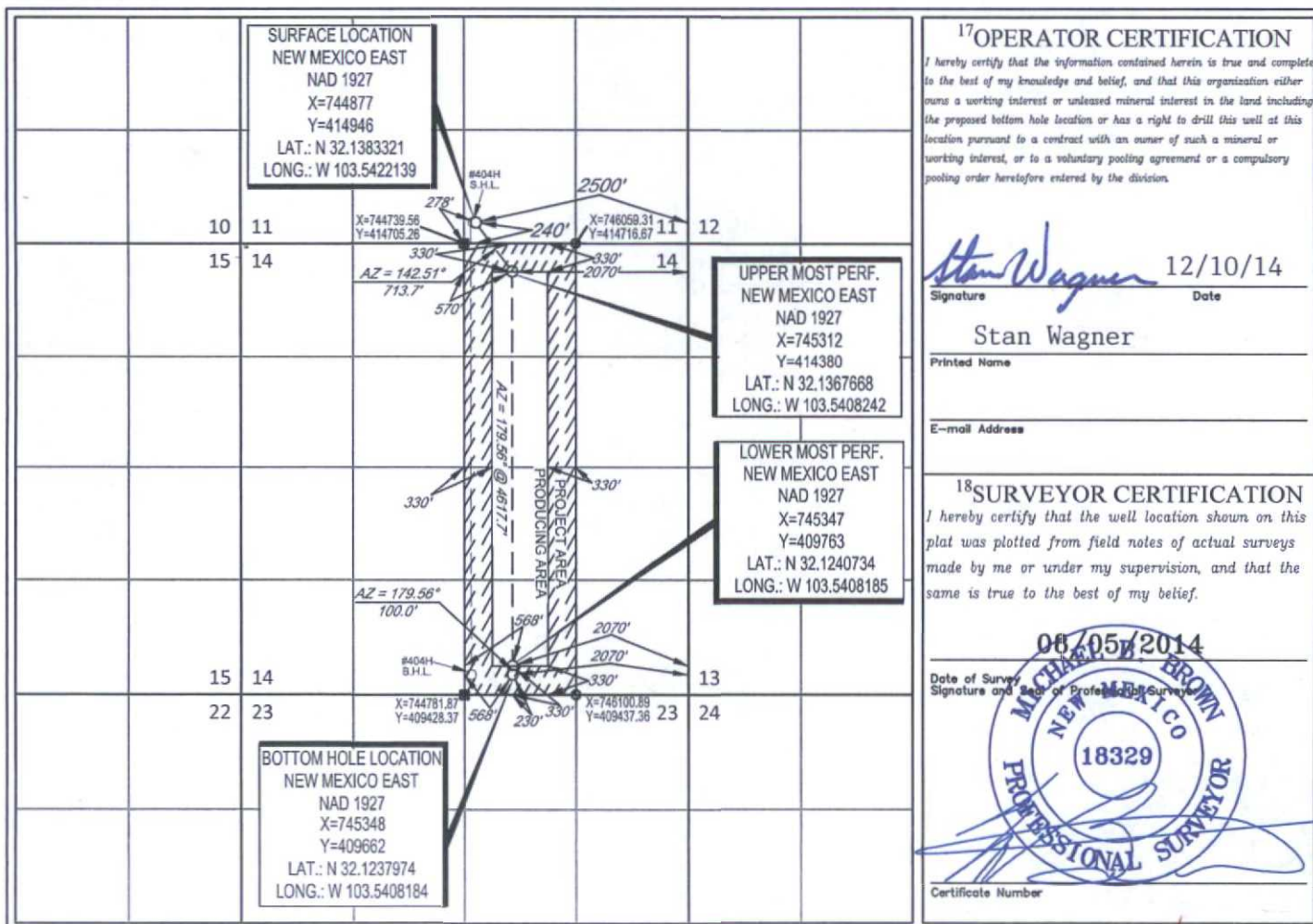
<sup>10</sup>Surface Location

UL or lot no.	Section	Township	Range	Lot Idn	Feet from the	North/South line	Feet from the	East/West line	County
0	11	25-S	33-E	-	240'	SOUTH	2500'	EAST	LEA

UL or lot no.	Section	Township	Range	Lot Idn	Feet from the	North/South line	Feet from the	East/West line	County
0	14	25-S	33-E	-	230'	SOUTH	2070'	EAST	LEA

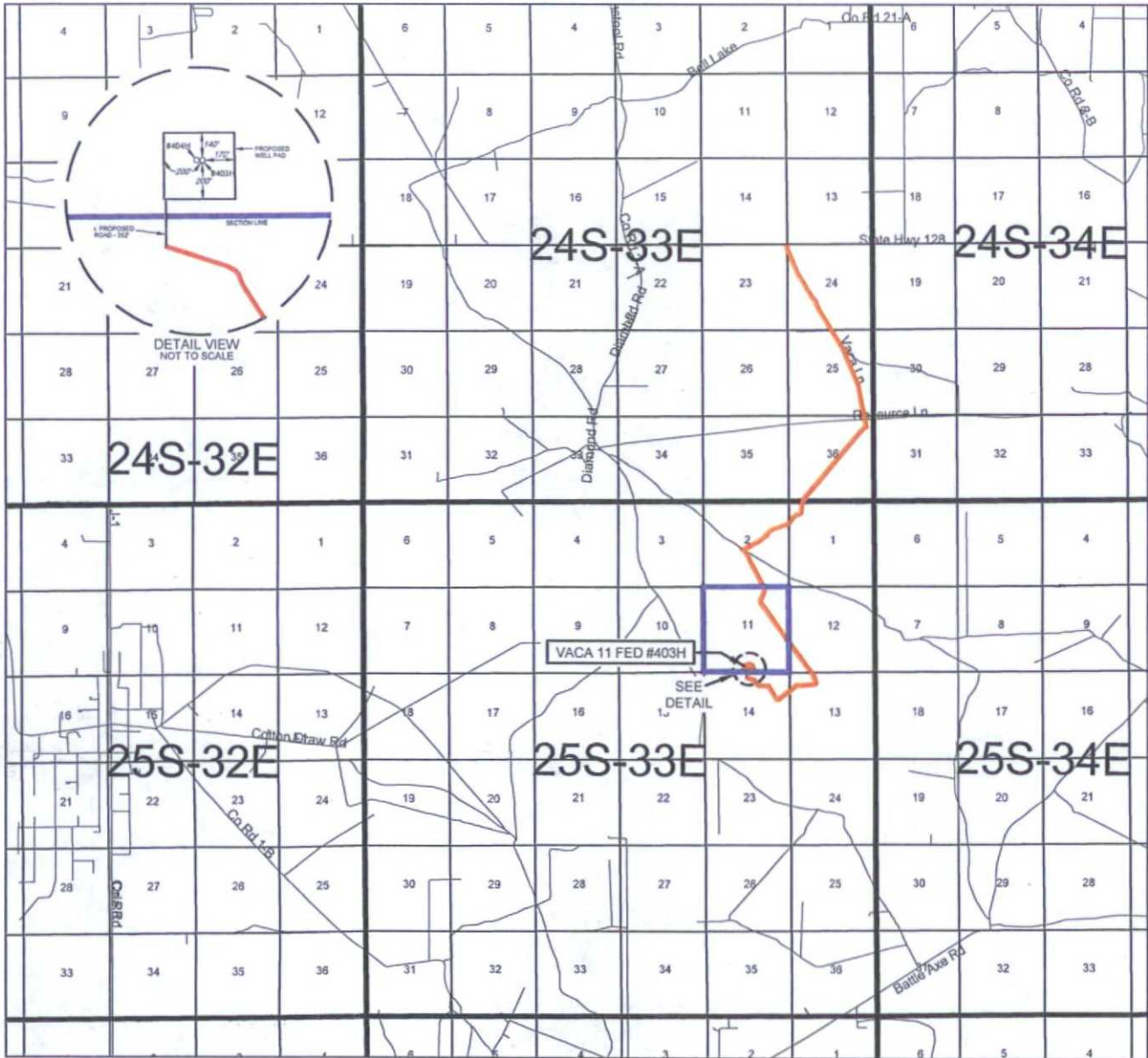
<sup>12</sup> Dedicated Acres 160.00	<sup>13</sup> Joint or Infill	<sup>14</sup> Consolidation Code	<sup>15</sup> Order No.
---	-------------------------------	----------------------------------	-------------------------

No allowable will be assigned to this completion until all interests have been consolidated or a non-standard unit has been approved by the division.



OCT 20 2015

# EXHIBIT 2 VICINITY MAP



LEASE NAME & WELL NO.: VACA 11 FED #403H

SECTION 11 TWP 25-S RGE 33-E SURVEY N.M.P.M.

COUNTY LEA STATE NM

DESCRIPTION 240' FSL & 2500' FEL

## DISTANCE & DIRECTION

FROM INT. OF NM-18 N & NM-128, GO WEST ON NM-128 W +22.0 MILES,  
THENCE SOUTH (LEFT) ON VACA LN. ±4.4 MILES, THENCE SOUTHEAST  
(LEFT) ON LEASE RD. ±1.5 MILES, THENCE WEST (RIGHT) ON LEASE RD.  
±0.5 MILES, THENCE NORTHWEST (RIGHT) ON LEASE RD. ±0.5 MILES,  
THENCE NORTH (RIGHT) ON PROPOSED RD. ±352 FEET, TO A POINT  
±200 FEET SOUTH OF THE LOCATION.

THIS EASEMENT/SERVITUDE LOCATION SHOWN HEREON HAS BEEN SURVEYED ON THE GROUND UNDER MY SUPERVISION AND PREPARED ACCORDING TO THE EVIDENCE FOUND AT THE TIME OF SURVEY, AND DATA PROVIDED BY EOG RESOURCES, INC. THIS CERTIFICATION IS MADE AND LIMITED TO THOSE PERSONS OR ENTITIES SHOWN ON THE FACE OF THIS PLAT AND IS NON-TRANSFERABLE. THIS SURVEY IS CERTIFIED FOR THIS TRANSACTION ONLY.

ALL BEARINGS, DISTANCES, AND COORDINATE VALUES CONTAINED HEREON ARE GRID BASED UPON THE NEW MEXICO STATE PLANE COORDINATE SYSTEM, EAST ZONE OF THE NORTH AMERICAN DATUM 1927, U.S. SURVEY FEET.



SCALE: 1" = 1000'

0' 500' 1000'

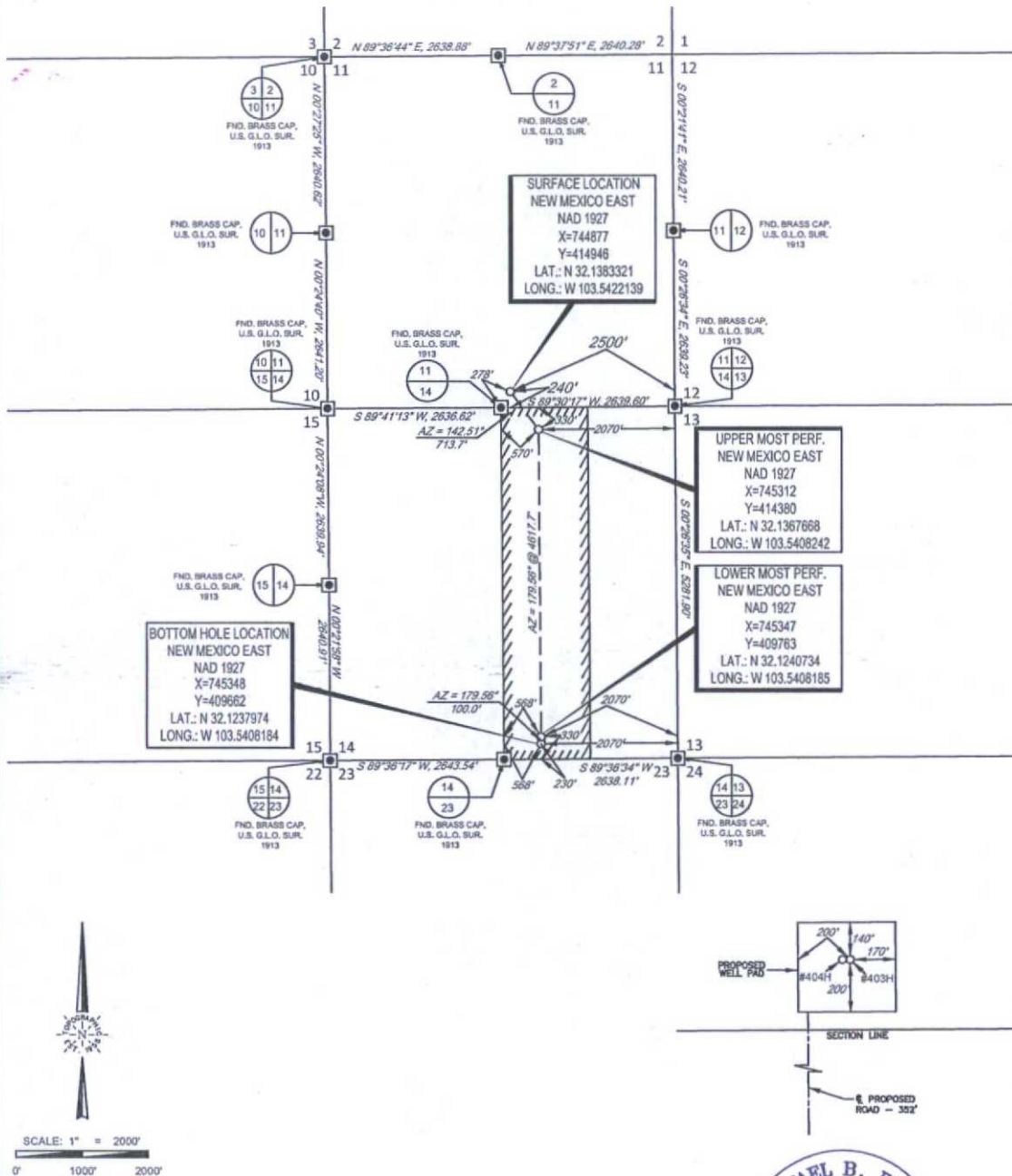


1400 EVERMAN PARKWAY, Ste. 197 • FT. WORTH, TEXAS 76140  
 TELEPHONE: (817) 744-7512 • FAX (817) 744-7548  
 2903 NORTH BIG SPRING • MIDLAND, TEXAS 79705  
 TELEPHONE: (432) 682-1653 OR (800) 767-1653 • FAX (432) 682-1743  
 WWW.TOPOGRAPHIC.COM



**EXHIBIT 2A**

SECTION 11, TOWNSHIP 25-S, RANGE 33-E, N.M.P.M.  
LEA COUNTY, NEW MEXICO



LEASE NAME & WELL NO.: VACA 11 FED #403H

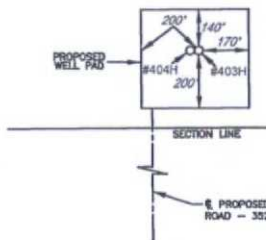
SECTION 11 TWP 25-S RGE 33-E SURVEY N.M.P.M.  
COUNTY LEA STATE NM  
DESCRIPTION 240' FSL & 2500' FEL

**DISTANCE & DIRECTION**

FROM INT. OF NM-18 N & NM-128. GO WEST ON NM-128 W ±22.0 MILES.  
THENCE SOUTH (LEFT) ON VACA LN. ±4.4 MILES. THENCE SOUTHEAST  
(LEFT) ON LEASE RD. ±1.5 MILES. THENCE WEST (RIGHT) ON LEASE RD.  
±0.5 MILES. THENCE NORTHWEST (RIGHT) ON LEASE RD. ±0.5 MILES.  
THENCE NORTH (RIGHT) ON PROPOSED RD. ±352 FEET, TO A POINT  
±200 FEET SOUTH OF THE LOCATION.

THIS EASEMENT/SERVITUDE LOCATION SHOWN HEREON HAS BEEN SURVEYED ON THE GROUND UNDER MY SUPERVISION AND PREPARED ACCORDING TO THE EVIDENCE FOUND AT THE TIME OF SURVEY, AND DATA PROVIDED BY EOG RESOURCES, INC. THIS CERTIFICATION IS MADE AND LIMITED TO THOSE PERSONS OR ENTITIES SHOWN ON THE FACE OF THIS PLAT AND IS NON-TRANSFERABLE. THIS SURVEY IS CERTIFIED FOR THIS TRANSACTION ONLY.

ALL BEARINGS, DISTANCES, AND COORDINATE VALUES CONTAINED HEREON ARE GRID BASED UPON THE NEW MEXICO STATE PLANE COORDINATE SYSTEM, EAST ZONE OF THE NORTH AMERICAN DATUM 1927, U.S. SURVEY FEET.



**MICHAEL B. BROWN**  
NEW MEXICO  
18329  
PROFESSIONAL SURVEYOR

Michael Blake Brown, P.S. No. 18329  
AUGUST 05, 2014

**TOPOGRAPHIC**  
LOYALTY INNOVATION LEGACY  
1400 EVERMAN PARKWAY, Ste. 167 • FT. WORTH, TEXAS 76140  
TELEPHONE: (817) 744-7512 • FAX: (817) 744-7548  
2503 NORTH BIG SPRING • MIDLAND, TEXAS 79705  
TELEPHONE: (432) 852-1653 OR (800) 767-1653 • FAX: (432) 682-1743  
WWW.TOPOGRAPHIC.COM

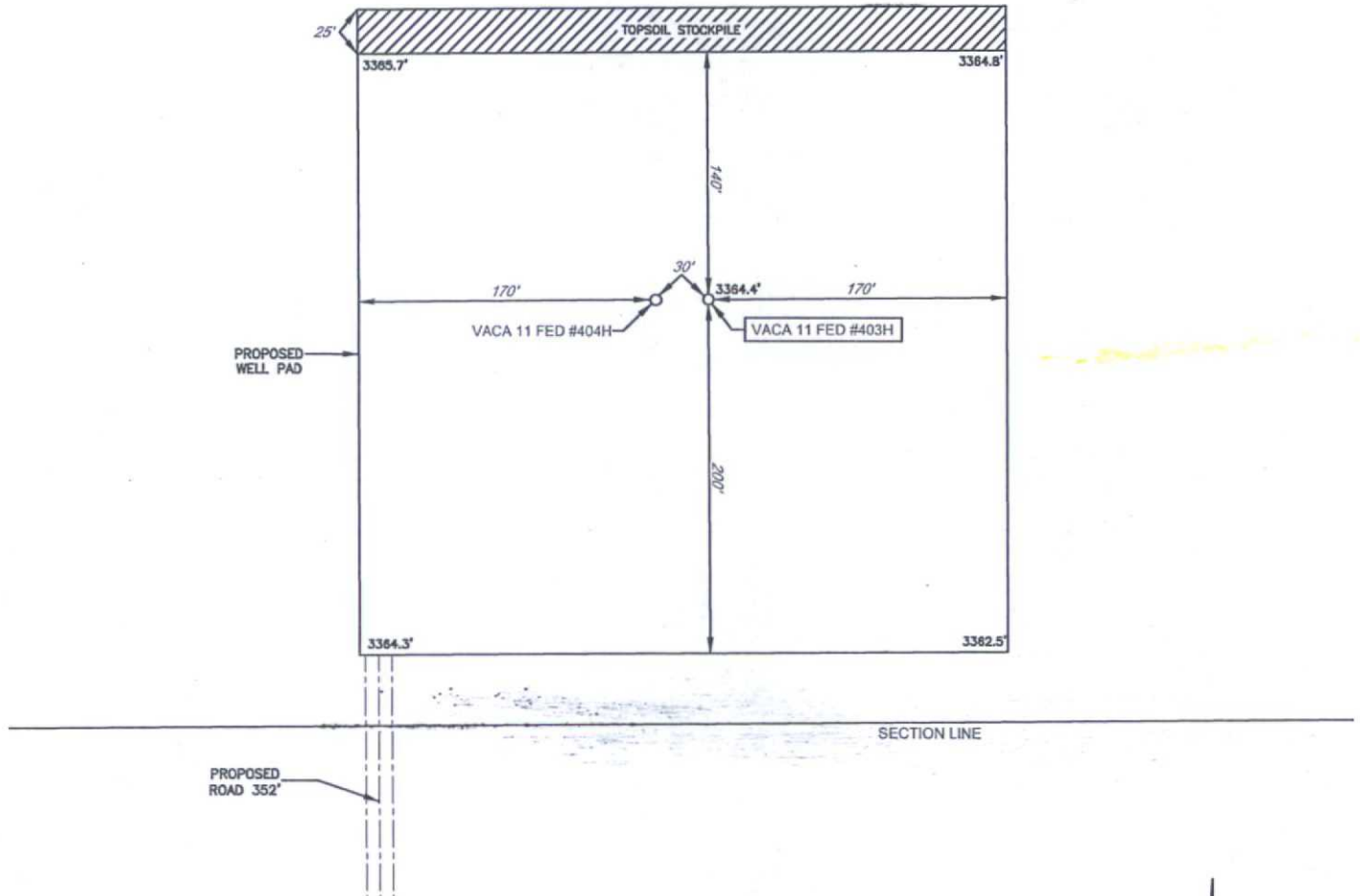


# EXHIBIT 2B

**eog resources, Inc.**

SECTION 11, TOWNSHIP 25-S, RANGE 33-E, N.M.P.M.  
LEA COUNTY, NEW MEXICO

DETAIL VIEW  
SCALE: 1" = 100'



LEASE NAME & WELL NO.: VACA 11 FED #403H  
#403H LATITUDE N 32.1383321 #403H LONGITUDE W 103.5422139

## LEGEND

== == == == EXISTING ROAD  
— SECTION LINE  
— EXISTING PIPELINE

SCALE: 1" = 100'  
0' 50' 100'

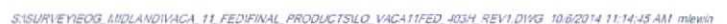
ALL BEARINGS, DISTANCES, AND COORDINATE VALUES CONTAINED HEREON ARE GRID BASED UPON THE NEW MEXICO STATE PLANE COORDINATE SYSTEM, EAST ZONE OF THE NORTH AMERICAN DATUM 1927, U.S. SURVEY FEET

THIS PROPOSED PAD SITE LOCATION SHOWN HEREON HAS BEEN SURVEYED ON THE GROUND UNDER MY SUPERVISION AND PREPARED ACCORDING TO THE EVIDENCE FOUND AT THE TIME OF SURVEY, AND DATA PROVIDED BY EOG RESOURCES, INC. THIS CERTIFICATION IS MADE AND LIMITED TO THOSE PERSONS OR ENTITIES SHOWN ON THE FACE OF THIS PLAT AND IS NON-TRANSFERABLE. THIS SURVEY IS CERTIFIED FOR THIS TRANSACTION ONLY.



**TOPOGRAPHIC**  
LOYALTY INNOVATION LEGACY

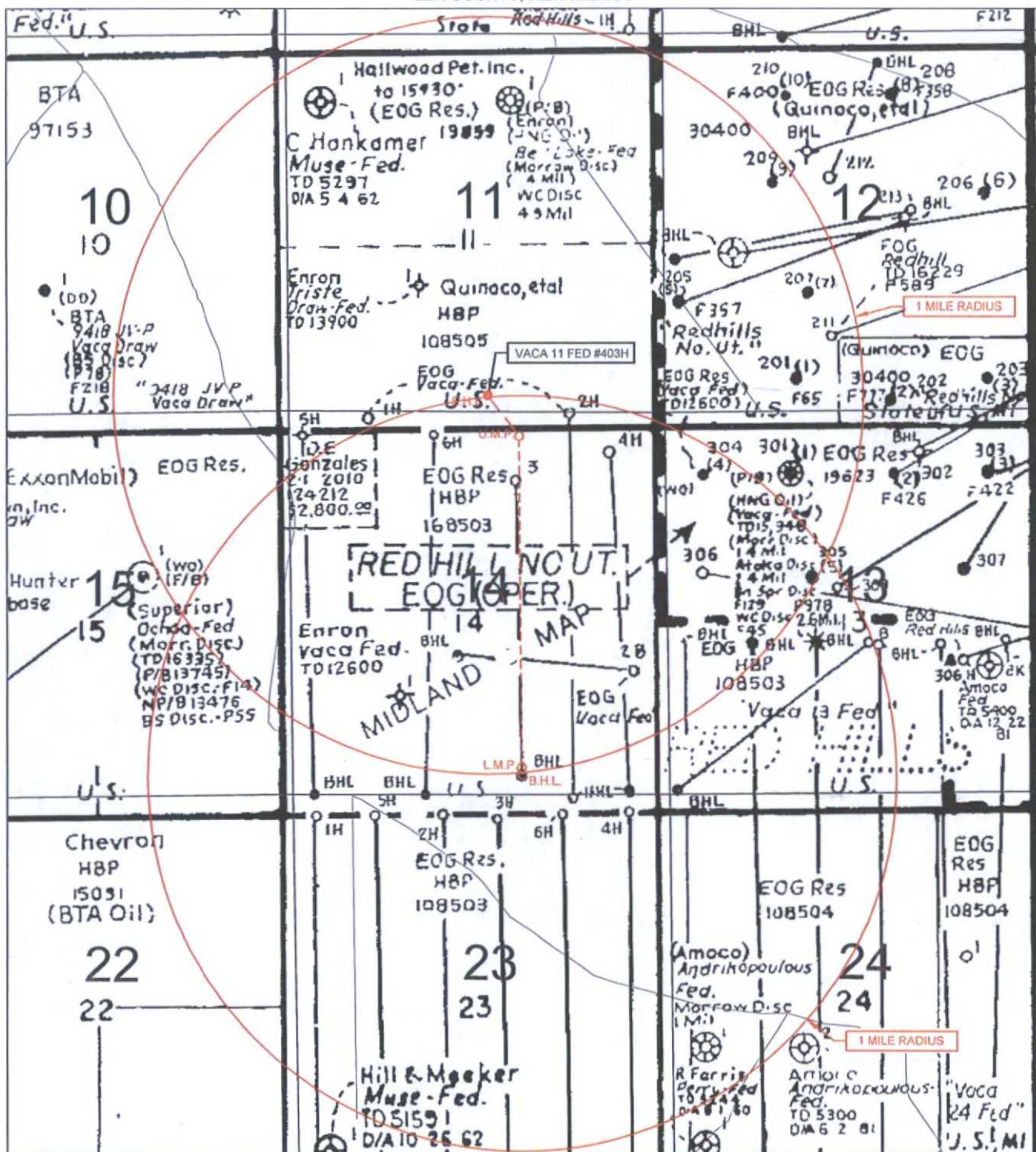
1400 EVERMAN PARKWAY, Ste. 197 • FT. WORTH, TEXAS 76140  
TELEPHONE: (817) 744-7512 • FAX: (817) 744-7548  
2903 NORTH BIG SPRING • MIDLAND, TEXAS 79705  
TELEPHONE: (432) 682-1653 OR (800) 767-1653 • FAX: (432) 682-1743  
WWW.TOPOGRAPHIC.COM





# EXHIBIT 3

SECTION 11, TOWNSHIP 25-S, RANGE 33-E, N.M.P.M.  
LEA COUNTY, NEW MEXICO



LEASE NAME & WELL NO.: VACA 11 FED #403H

SCALE: NTS

#403H LATITUDE N 32.1383321

#403H LONGITUDE W 103.5422139

## LEGEND

- == == == == EXISTING ROAD
- — — — SECTION LINE
- — — — EXISTING PIPELINE
- — — — OVERHEAD ELECTRIC
- X — — FENCE LINE



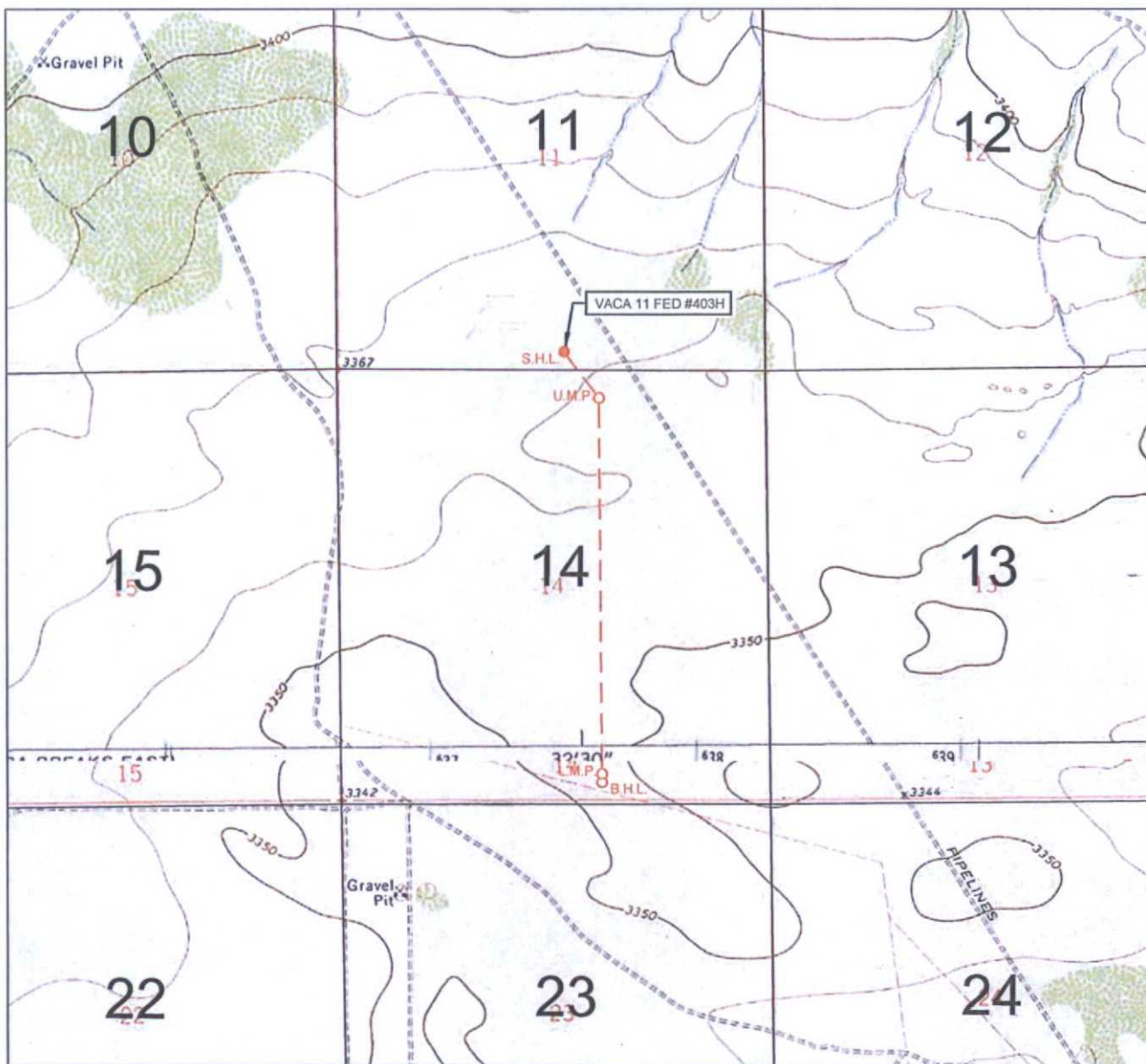
**TOPOGRAPHIC**  
LOYALTY INNOVATION LEGACY

1400 EVERMAN PARKWAY, Ste. 197 • FT. WORTH, TEXAS 76140  
TELEPHONE: (817) 744-7512 • FAX: (817) 744-7548  
2903 NORTH BIG SPRING • MIDLAND, TEXAS 79705  
TELEPHONE: (432) 682-1653 OR (800) 767-1653 • FAX: (432) 682-1743  
WWW.TOPOGRAPHIC.COM

ALL BEARINGS, DISTANCES, AND COORDINATE VALUES CONTAINED HEREON ARE GRID BASED UPON THE NEW MEXICO STATE PLANE COORDINATE SYSTEM, EAST ZONE OF THE NORTH AMERICAN DATUM 1927, U.S. SURVEY FEET

THIS EASEMENT/SERVITUDE LOCATION SHOWN HEREON HAS BEEN SURVEYED ON THE GROUND UNDER MY SUPERVISION AND PREPARED ACCORDING TO THE EVIDENCE FOUND AT THE TIME OF SURVEY, AND DATA PROVIDED BY EOG RESOURCES, INC. THIS CERTIFICATION IS MADE AND LIMITED TO THOSE PERSONS OR ENTITIES SHOWN ON THE FACE OF THIS PLAT AND IS NON-TRANSFERABLE. THIS SURVEY IS CERTIFIED FOR THIS TRANSACTION ONLY.

# LOCATION & ELEVATION VERIFICATION MAP



LEASE NAME & WELL NO.: VACA 11 FED #403H

SECTION 11 TWP 25-S RGE 33-E SURVEY N.M.P.M.  
 COUNTY LEA STATE NM ELEVATION 3364'  
 DESCRIPTION 240' FSL & 2500' FEL

LATITUDE N 32.1383321 LONGITUDE W 103.5422139



THIS EASEMENT/SERVITUDE LOCATION SHOWN HEREON HAS BEEN SURVEYED ON THE GROUND UNDER MY SUPERVISION AND PREPARED ACCORDING TO THE EVIDENCE FOUND AT THE TIME OF SURVEY, AND DATA PROVIDED BY EOG RESOURCES, INC. THIS CERTIFICATION IS MADE AND LIMITED TO THOSE PERSONS OR ENTITIES SHOWN ON THE FACE OF THIS PLAT AND IS NON-TRANSFERABLE. THIS SURVEY IS CERTIFIED FOR THIS TRANSACTION ONLY.

ALL BEARINGS, DISTANCES, AND COORDINATE VALUES CONTAINED HEREON ARE GRID BASED UPON THE NEW MEXICO STATE PLANE COORDINATE SYSTEM, EAST ZONE OF THE NORTH AMERICAN DATUM 1927, U.S. SURVEY FEET.



1400 EVERMAN PARKWAY, Ste. 197 • FT. WORTH, TEXAS 76140  
 TELEPHONE: (817) 744-7512 • FAX: (817) 744-7548  
 2903 NORTH BIG SPRING • MIDLAND, TEXAS 79705  
 TELEPHONE: (432) 682-1653 OR (800) 767-1653 • FAX: (432) 682-1743  
 WWW.TOPOGRAPHIC.COM

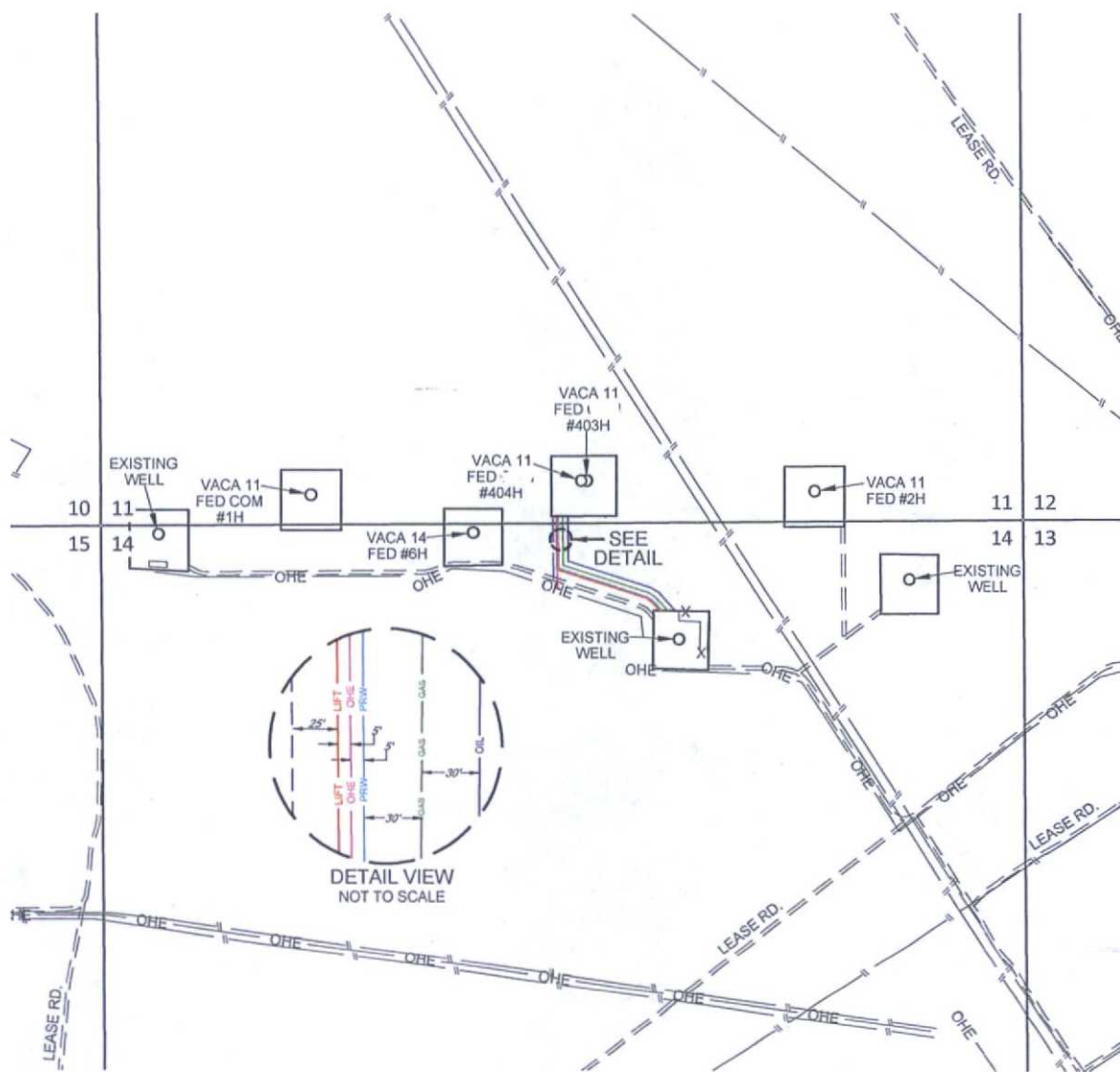


SCALE 1" = 1000'  
0' 500' 1000'

## EXHIBIT 5

SECTION 11, TOWNSHIP 25-S, RANGE 33-E, N.M.P.M.  
LEA COUNTY, NEW MEXICO

# VACA 11 FED #403H-#404H INFRASTRUCTURE MAP



VACA 11 FED #403H-#404H INFRASTRUCTURE MAP	REVISION:	
	S.V.	01/12/15
DATE: 12/18/14		
FILE: SK_VACA11FED_403H-404H_INFRASTRUCTURE_REV1		
DRAWN BY: E.A.H.		
SHEET: 1 OF 1		

LEASE RD.	FROM LAUNCH PAD RD. TO VACA 11 FED COM #403H & #404H..... 352 FT	ELECTRIC LINE -(WORKING PRESSURE 75-125 PSI) FROM VACA 11 FED COM #403H & #404H TO VACA 14 FED #4H..... 409 FT
PRW	8" PRODUCED WATERLINE -(WORKING PRESSURE 75-125 PSI) FROM VACA 11 FED COM #403H & #404H TO VACA 14 FED #4H..... 939 FT	12" GAS SALES LINE -(WORKING PRESSURE 75-125 PSI) FROM VACA 11 FED COM #403H & #404H TO VACA 14 FED #4H..... 940 FT
LIFT	8" GAS LIFT LINE -(WORKING PRESSURE 75-125 PSI) FROM VACA 11 FED COM #403H & #404H TO VACA 14 FED #4H..... 939 FT	4" STEEL OIL SALES LINE (ITS OWN ROW BURIED) -(WORKING PRESSURE 75-125 PSI) FROM VACA 11 FED COM #403H & #404H TO VACA 14 FED #4H..... 941 FT