

District I  
1625 N. French Dr., Hobbs, NM 88240  
Phone: (575) 393-6161 Fax: (575) 393-0720  
District II  
811 S. First St., Artesia, NM 88210  
Phone: (575) 748-1283 Fax: (575) 748-9720  
District III  
1000 Rio Brazos Road, Aztec, NM 87410  
Phone: (505) 334-6178 Fax: (505) 334-6170  
District IV  
1220 S. St. Francis Dr., Santa Fe, NM 87505  
Phone: (505) 476-3460 Fax: (505) 476-3462

State of New Mexico  
Energy, Minerals & Natural Resources Department  
OIL CONSERVATION DIVISION  
1220 South St. Francis Dr.  
Santa Fe, NM 87505

Form C-102  
Revised August 1, 2011  
Submit one copy to appropriate  
District Office

OCT 27 2015

☐ AMENDED REPORT

WELL LOCATION AND ACREAGE DEDICATION

RECEIVED

<sup>1</sup> API Number 30-025-42821	<sup>2</sup> Pool Code 7320	<sup>3</sup> Pool Name Brinninstool; Bone Spring
<sup>4</sup> Property Code 314792	<sup>5</sup> Property Name NORTH THISTLE 2 STATE	
<sup>6</sup> OGRID No. 6137	<sup>7</sup> Operator Name DEVON ENERGY PRODUCTION COMPANY, L.P.	<sup>8</sup> Well Number 2H
		<sup>9</sup> Elevation 3514.9

<sup>10</sup> Surface Location

UL or lot no.	Section	Township	Range	Lot Idn	Feet from the	North/South line	Feet from the	East/West line	County
2	2	23 S	33 E		505	NORTH	1980	EAST	LEA

<sup>11</sup> Bottom Hole Location If Different From Surface

UL or lot no.	Section	Township	Range	Lot Idn	Feet from the	North/South line	Feet from the	East/West line	County
O	2	23 S	33 E		330	SOUTH	2290	EAST	LEA

<sup>12</sup> Dedicated Acres 159.73	<sup>13</sup> Joint or Infill	<sup>14</sup> Consolidation Code	<sup>15</sup> Order No.
---	-------------------------------	----------------------------------	-------------------------

No allowable will be assigned to this completion until all interests have been consolidated or a non-standard unit has been approved by the division.

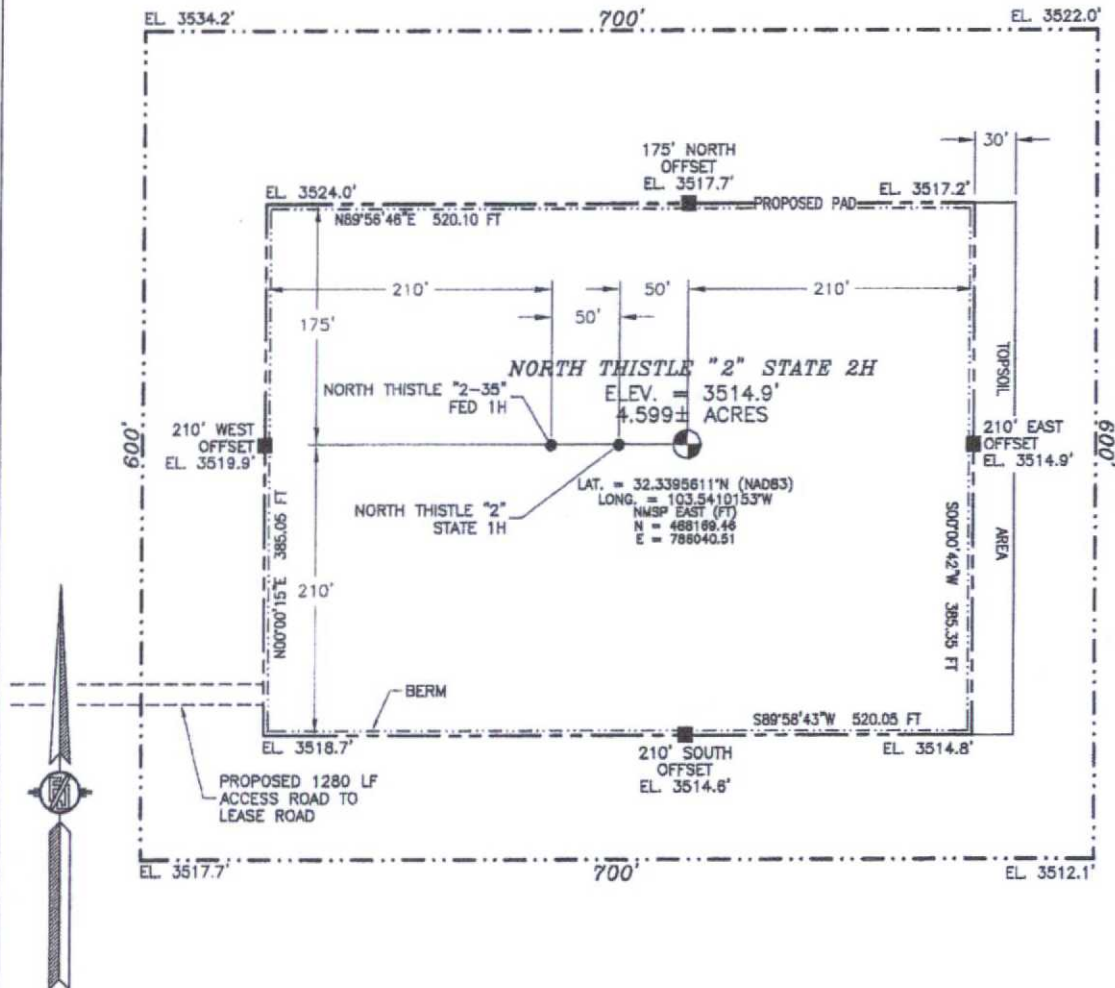
<p><b>NOTE:</b> LATITUDE AND LONGITUDE COORDINATES ARE SHOWN USING THE NORTH AMERICAN DATUM OF 1983 (NAD83). LISTED NEW MEXICO STATE PLANE EAST COORDINATES ARE GRID (NAD83). BASIS OF BEARING AND DISTANCES USED ARE NEW MEXICO STATE PLANE EAST COORDINATES MODIFIED TO THE SURFACE.</p>		<p><b>17 OPERATOR CERTIFICATION</b> I hereby certify that the information contained herein is true and complete to the best of my knowledge and belief, and that this organization either owns a working interest or undivided mineral interest in the land including the proposed bottom hole location or has a right to drill this well at this location pursuant to a contract with an owner of such a mineral or working interest, or to a voluntary pooling agreement or a compulsory pooling order heretofore entered by the division.</p> <p><i>Linda Good</i> 10/27/2015 Signature Date</p> <p>Linda Good Printed Name</p> <p>linda.good@dmv.com E-mail Address</p>	
<p><b>18 SURVEYOR CERTIFICATION</b> I hereby certify that the well location shown on this plat was plotted from field notes of actual surveys made by me or under my supervision, and that the same is true and correct to the best of my belief.</p> <p>SEPTEMBER 21, 2015 Date of Survey</p> <p><i>Simon F. Jaramillo</i> Professional Surveyor</p> <p>Certificate Number: SIMON F. JARAMILLO, PLS 12797 SURVEY NO. 4231</p>		<p><b>19 BOTTOM OF HOLE</b> LAT. = 32.3273658°N LONG. = 103.5420360°W NMSP EAST (FT) N = 483730.43 E = 785753.05</p>	

OCT 27 2015

SECTION 2, TOWNSHIP 23 SOUTH, RANGE 33 EAST, N.M.P.M.  
LEA COUNTY, STATE OF NEW MEXICO

SITE MAP

NOTE: LATITUDE AND LONGITUDE COORDINATES ARE SHOWN USING THE NORTH AMERICAN DATUM OF 1983 (NAD83). LISTED NEW MEXICO STATE PLANE EAST COORDINATES ARE GRID (NAD83). BASIS OF BEARING AND DISTANCES USED ARE NEW MEXICO STATE PLANE EAST COORDINATES MODIFIED TO THE SURFACE



0 12 60 120 240

SCALE 1" = 120'

DIRECTIONS TO LOCATION

FROM THE INTERSECTION OF STATE HIGHWAY 128 AND CR 21 (DELAWARE BASIN ROAD) GO NORTH ON CR 21 APPROX. 6.0 MILES TO A LEASE ROAD ON LEFT (WEST). TURN WEST GO APPROX. 2.4 MILES TO A LEASE ROAD ON RIGHT (NORTH). TURN NORTH GO APPROX. 2.0 MILES TO A FRAC POND. PASS FRAC POND NORTH IS A LEASE ROAD GOING NORTH AND BEGIN UPGRADE ON LEASE ROAD. GO NORTH APPROX. 0.9 MILE TO A ROAD LATH WITH RED & WHITE FLAGGING ON RIGHT (EAST) AND THE END OF UPGRADE. GO EAST FOLLOW ROAD LATHS APPROX. 1280' TO THE SOUTHWEST PAD CORNER FOR THIS LOCATION.

DEVON ENERGY PRODUCTION COMPANY, L.P.

**NORTH THISTLE "2" STATE 2H**

LOCATED 505 FT. FROM THE NORTH LINE

AND 1980 FT. FROM THE EAST LINE OF

SECTION 2, TOWNSHIP 23 SOUTH,

RANGE 33 EAST, N.M.P.M.

LEA COUNTY, STATE OF NEW MEXICO

SEPTEMBER 21, 2015

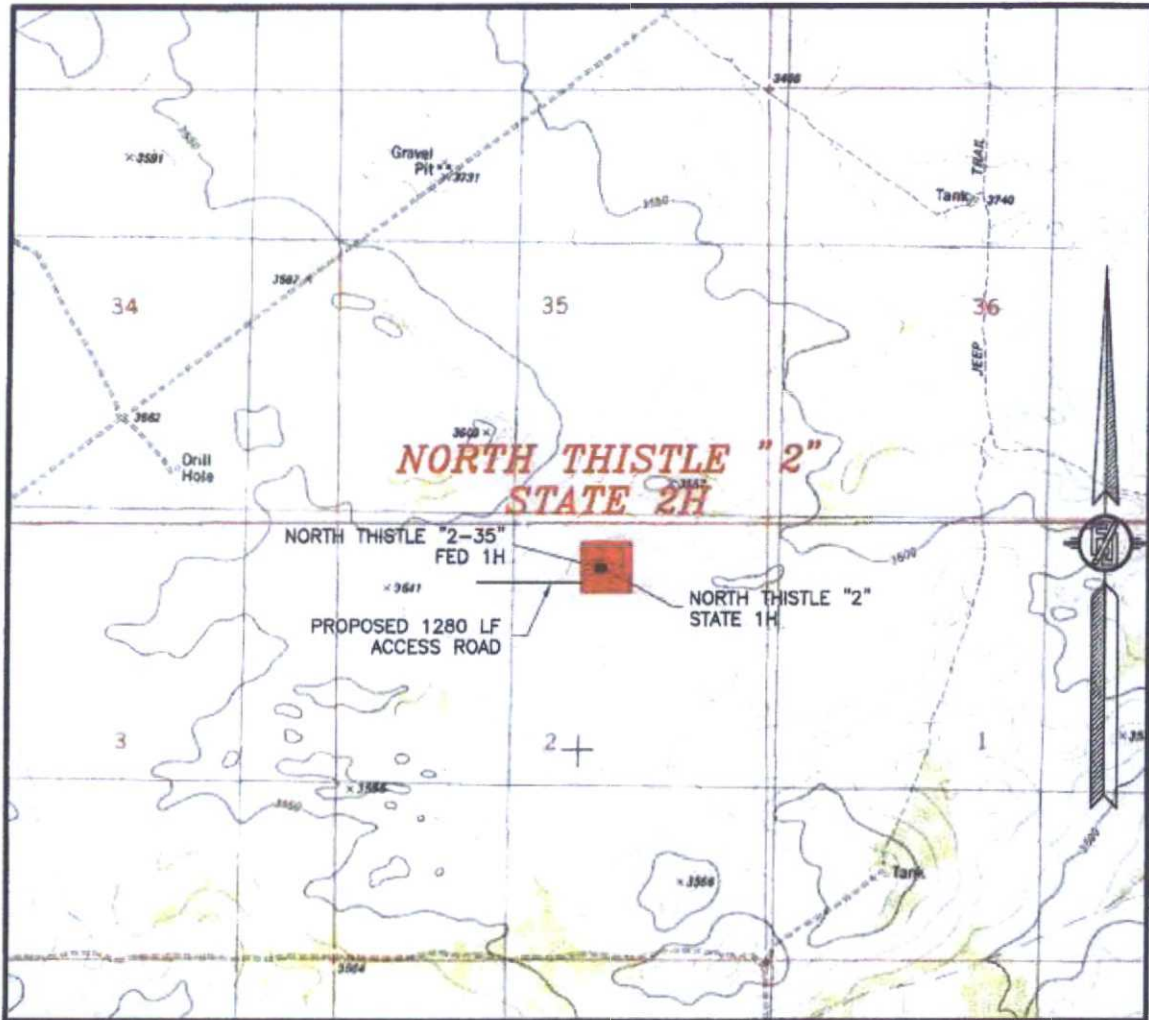
SURVEY NO. 4231

MADRON SURVEYING, INC. 301 SOUTH CANAL (575) 234-3341

CARLSBAD, NEW MEXICO



SECTION 2, TOWNSHIP 23 SOUTH, RANGE 33 EAST, N.M.P.M.  
LEA COUNTY, STATE OF NEW MEXICO  
LOCATION VERIFICATION MAP



USGS QUAD MAP:  
TIP TOP WELLS

NOT TO SCALE

DEVON ENERGY PRODUCTION COMPANY, L.P.  
**NORTH THISTLE "2" STATE 2H**  
LOCATED 505 FT. FROM THE NORTH LINE  
AND 1980 FT. FROM THE EAST LINE OF  
SECTION 2, TOWNSHIP 23 SOUTH,  
RANGE 33 EAST, N.M.P.M.  
LEA COUNTY, STATE OF NEW MEXICO

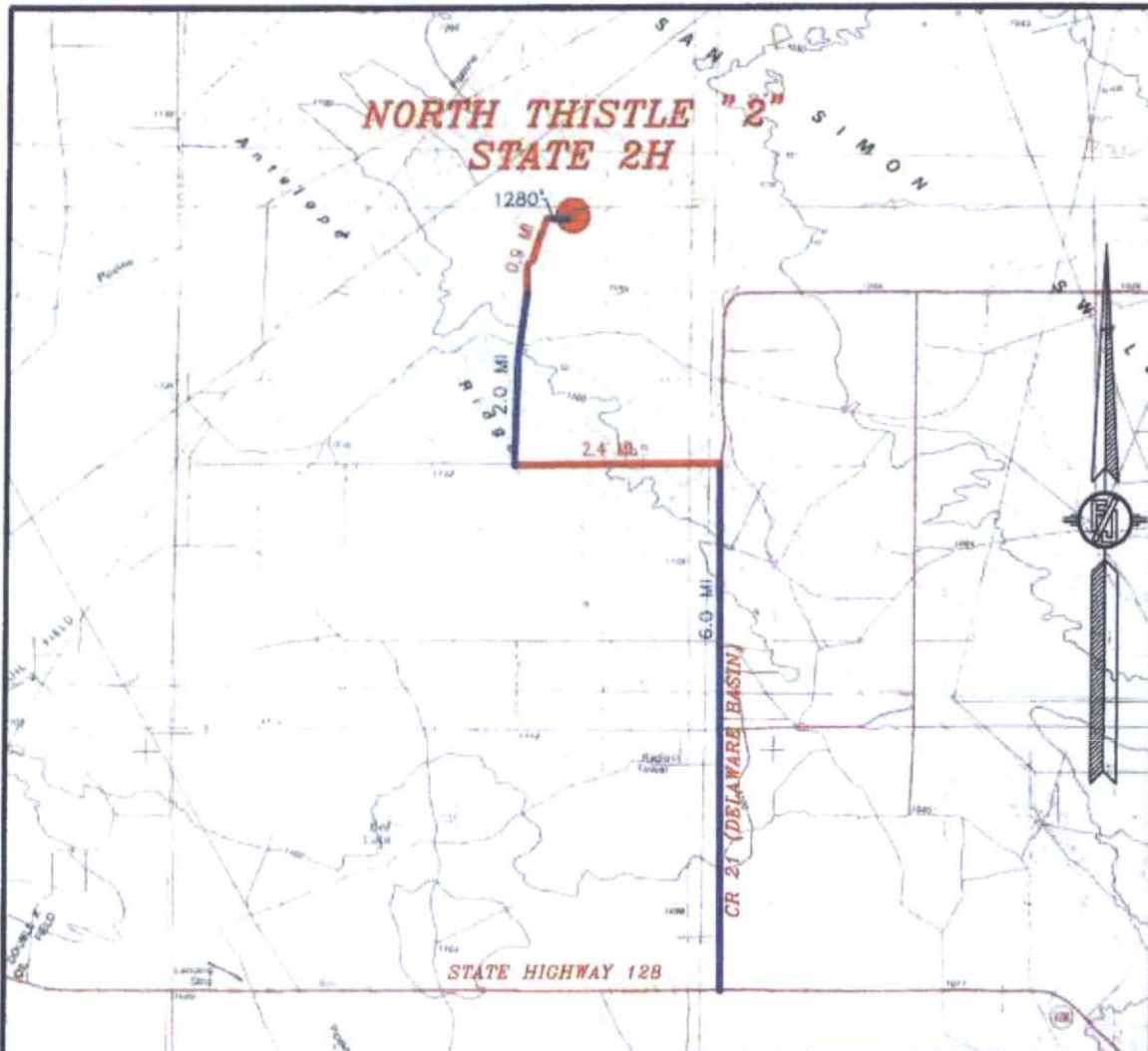
SEPTEMBER 21, 2015

MADRON SURVEYING, INC. 301 SOUTH CANAL CARLSBAD, NEW MEXICO

SURVEY NO. 4231

(575) 234-3341

SECTION 2, TOWNSHIP 23 SOUTH, RANGE 33 EAST, N.M.P.M.  
LEA COUNTY, STATE OF NEW MEXICO  
VICINITY MAP



DISTANCES IN MILES

NOT TO SCALE

DEVON ENERGY PRODUCTION COMPANY, L.P.

**NORTH THISTLE "2" STATE 2H**  
LOCATED 505 FT. FROM THE NORTH LINE  
AND 1980 FT. FROM THE EAST LINE OF  
SECTION 2, TOWNSHIP 23 SOUTH,  
RANGE 33 EAST, N.M.P.M.  
LEA COUNTY, STATE OF NEW MEXICO

**DIRECTIONS TO LOCATION**

FROM THE INTERSECTION OF STATE HIGHWAY 128 AND CR 21 (DELAWARE BASIN ROAD) GO NORTH ON CR 21 APPROX. 6.0 MILES TO A LEASE ROAD ON LEFT (WEST). TURN WEST GO APPROX. 2.4 MILES TO A LEASE ROAD ON RIGHT (NORTH). TURN NORTH GO APPROX. 2.0 MILES TO A FRAC POND. PASS FRAC POND NORTH IS A LEASE ROAD GOING NORTH AND BEGIN UPGRADE ON LEASE ROAD, GO NORTH APPROX. 0.9 MILE TO A ROAD LATH WITH RED & WHITE FLAGGING ON RIGHT (EAST) AND THE END OF UPGRADE, GO EAST FOLLOW ROAD LATHS APPROX. 1280' TO THE SOUTHWEST PAD CORNER FOR THIS LOCATION.

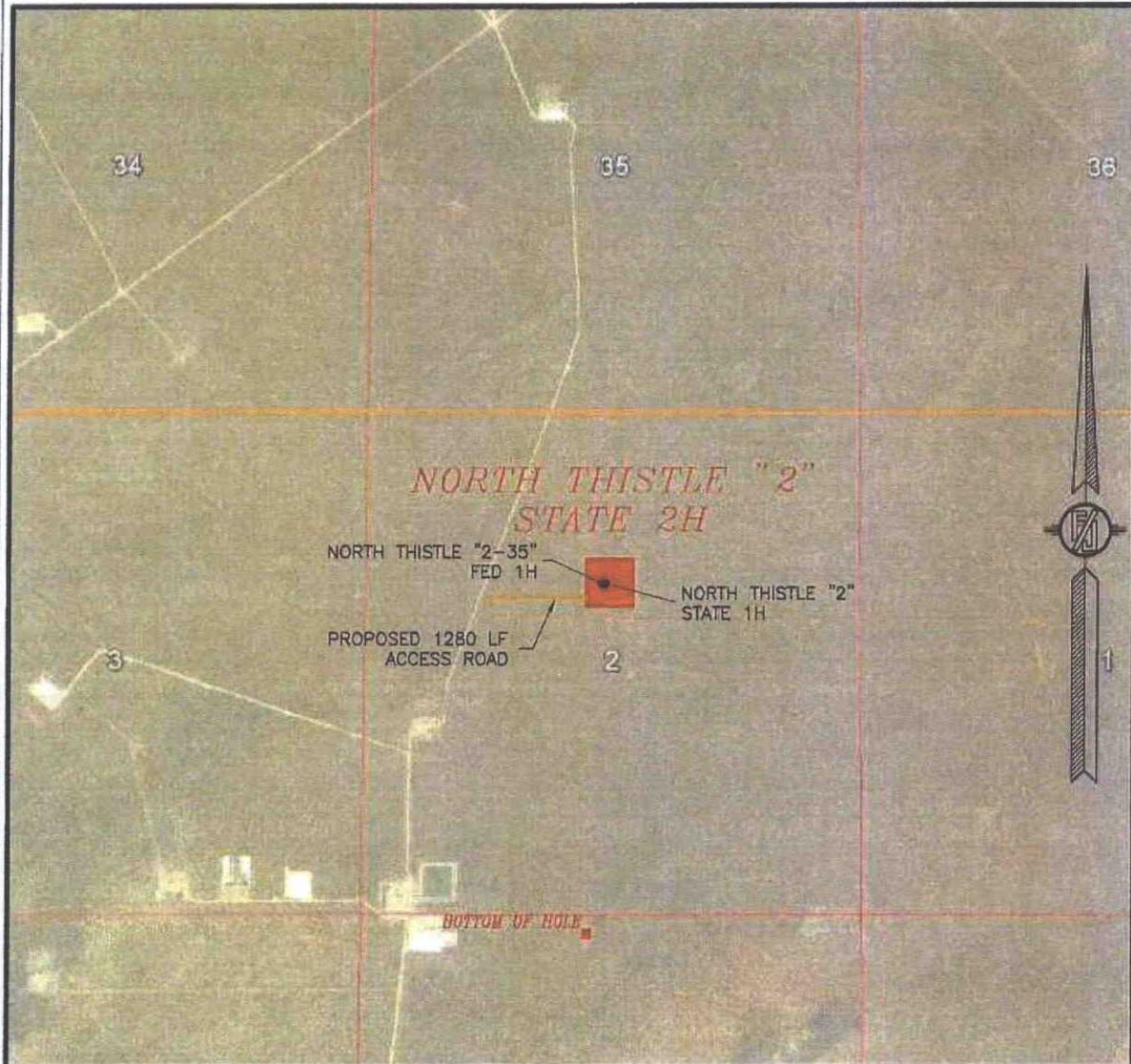
SEPTEMBER 21, 2015

SURVEY NO. 4231

MADRON SURVEYING, INC. 301 SOUTH CANAL CARLSBAD, NEW MEXICO  
(575) 234-3341



SECTION 2, TOWNSHIP 23 SOUTH, RANGE 33 EAST, N.M.P.M.  
LEA COUNTY, STATE OF NEW MEXICO  
**AERIAL PHOTO**



NOT TO SCALE  
AERIAL PHOTO:  
GOOGLE EARTH  
FEBRUARY 2014

DEVON ENERGY PRODUCTION COMPANY, L.P.  
**NORTH THISTLE "2" STATE 2H**  
LOCATED 505 FT. FROM THE NORTH LINE  
AND 1980 FT. FROM THE EAST LINE OF  
SECTION 2, TOWNSHIP 23 SOUTH,  
RANGE 33 EAST, N.M.P.M.  
LEA COUNTY, STATE OF NEW MEXICO

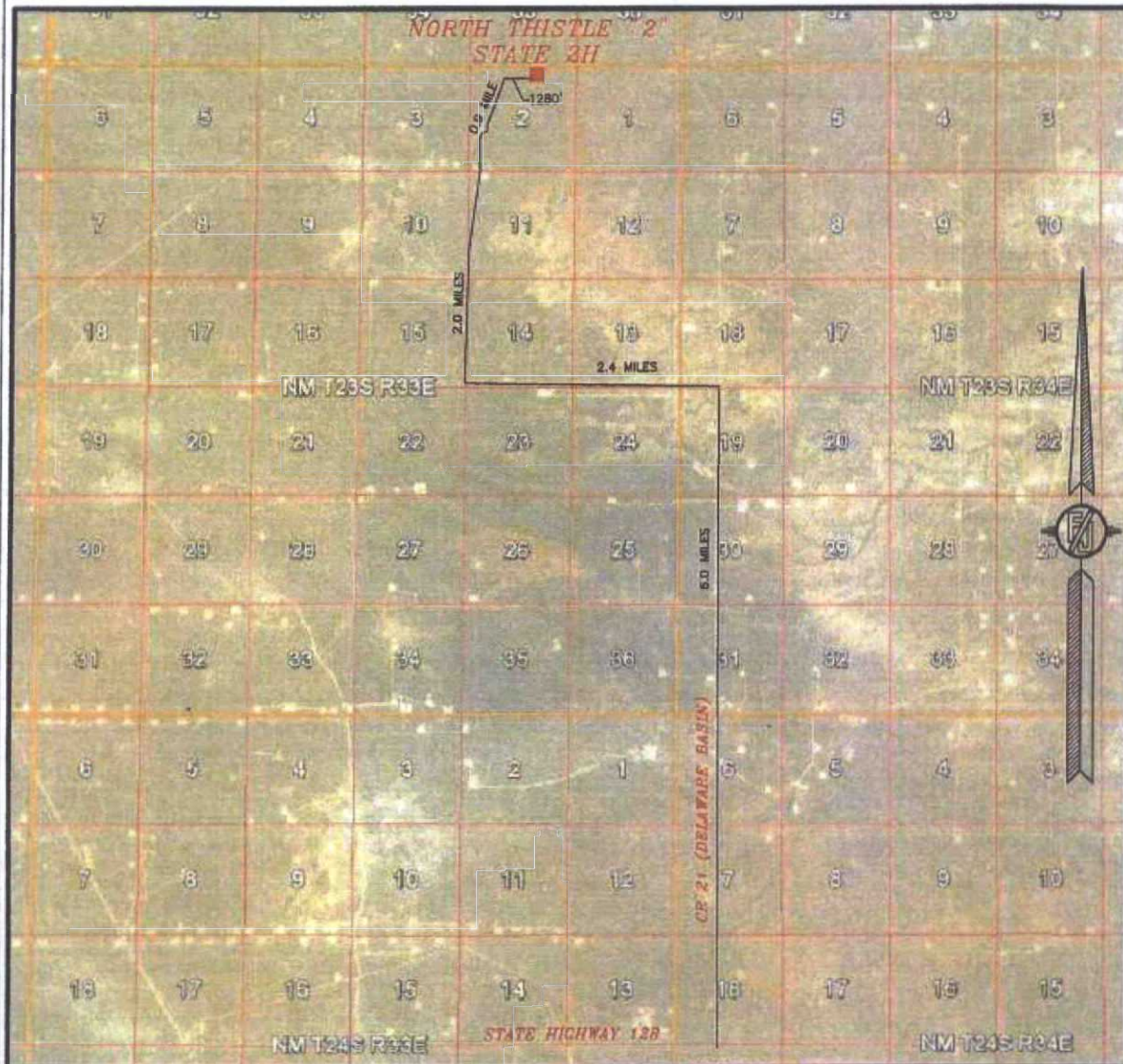
SEPTEMBER 21, 2015

SURVEY NO. 4231

MADRON SURVEYING, INC. 301 SOUTH CANAL (575) 234-3341 CARLSBAD, NEW MEXICO



SECTION 2, TOWNSHIP 23 SOUTH, RANGE 33 EAST, N.M.P.M.  
LEA COUNTY, STATE OF NEW MEXICO  
**ACCESS AERIAL ROUTE MAP**



NOT TO SCALE  
AERIAL PHOTO:  
GOOGLE EARTH  
FEBRUARY 2014

**DEVON ENERGY PRODUCTION COMPANY, L.P.**  
**NORTH THISTLE "2" STATE 2H**  
LOCATED 505 FT. FROM THE NORTH LINE  
AND 1980 FT. FROM THE EAST LINE OF  
SECTION 2, TOWNSHIP 23 SOUTH,  
RANGE 33 EAST, N.M.P.M.  
LEA COUNTY, STATE OF NEW MEXICO

SEPTEMBER 21, 2015

SURVEY NO. 4231

MADRON SURVEYING, INC. 301 SOUTH CANAL (575) 234-3341 CARLSBAD, NEW MEXICO