

District I
1625 N. French Dr., Hobbs, NM 88240
Phone: (575) 393-6161 Fax: (575) 393-0720
District II
811 S. First St., Artesia, NM 88210
Phone: (575) 748-1283 Fax: (575) 748-9720
District III
1000 Rio Brazos Road, Aztec, NM 87410
Phone: (505) 334-6178 Fax: (505) 334-6170
District IV
1220 S. St. Francis Dr., Santa Fe, NM 87505
Phone: (505) 476-3460 Fax: (505) 476-3462

State of New Mexico
Energy, Minerals & Natural Resources Department
OIL CONSERVATION DIVISION
1220 South St. Francis Dr.
Santa Fe, NM 87505

Form C-102
Revised August 1, 2011
Submit one copy to appropriate
District Office

OCT 30 2015

☐ AMENDED REPORT

WELL LOCATION AND ACREAGE DEDICATION PLAT

1 API Number 30-024-42912		2 Pool Code 98065		3 Pool Name WC-024 G-08 5263205N; UPR WC	
4 Property Code 315628		5 Property Name RED HILLS WEST 21 W1AP. FED COM			
7 OGRID NO. 14744		8 Operator Name MEWBOURNE OIL COMPANY			
		9 Elevation 3163'			
10 Surface Location					
UL or lot no. A	Section 21	Township 26S	Range 32E	Lot Idn	Feet from the 185
				North/South line NORTH	Feet From the 650
				East/West line EAST	County LEA
11 Bottom Hole Location If Different From Surface					
UL or lot no. P	Section 21	Township 26S	Range 32E	Lot Idn	Feet from the 330
				North/South line SOUTH	Feet from the 500
				East/West line EAST	County LEA
12 Dedicated Acres 320/160		13 Joint or Infill		15 Order No.	

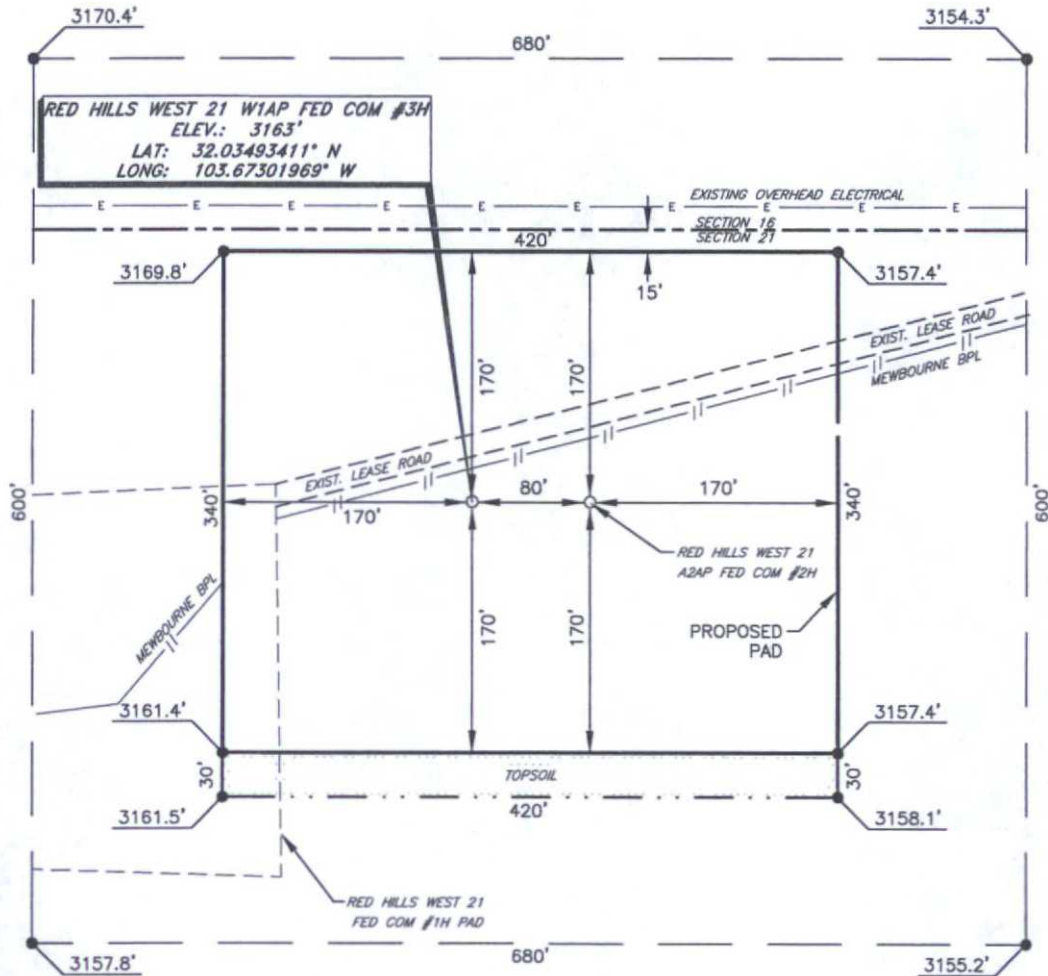
No allowable will be assigned to this completion until all interest have been consolidated or a non-standard unit has been approved by the division.

<p>16 GEODETIC DATA NAD 27 GRID - NM EAST</p> <p>SURFACE LOCATION N 377060.4 - E 704618.1 LAT: 32.03493411' N LONG: 103.67301969' W</p> <p>BOTTOM HOLE N 372226.8 - E 704806.2</p> <p>CORNER DATA NAD 27 GRID - NM EAST A: FOUND BRASS CAP "1939" N 371866.9 - E 699963.6 B: FOUND BRASS CAP "1939" N 374539.3 - E 699953.1 C: FOUND BRASS CAP "1939" N 377211.9 - E 699941.2 D: FOUND BRASS CAP "1939" N 377231.6 - E 702606.4 E: FOUND BRASS CAP "1939" N 377249.8 - E 705266.4 F: FOUND BRASS CAP "1939" N 371899.9 - E 705308.7 G: FOUND BRASS CAP "1939" N 371883.6 - E 702636.7</p>		<p>17 OPERATOR CERTIFICATION I hereby certify that the information contained herein is true and complete to the best of my knowledge and belief, and that this organization either owns a working interest or unleased mineral interest in the land including the proposed bottom hole location or has a right to drill this well at this location pursuant to a contract with an owner of such a mineral or working interest, or to a voluntary pooling agreement or a compulsory pooling order heretofore entered by the division.</p> <p>Signature: B. R. Bishop Date: 7-24-15 Printed Name: BRADLEY BISHOP E-mail Address:</p>	
<p>18 SURVEYOR CERTIFICATION I hereby certify that the well location shown on this plat was plotted from field notes of actual surveys made by me or under my supervision, and that the same is true and correct to the best of my belief.</p> <p>6-25-2015 Date of Survey Signature and Seal of Professional Surveyor: Robert M. Howett Certificate Number: 19680</p>		<p>DETAIL "A" 3170.4' 680' 3154.3' 3157.8' 3155.2' S. L. S 02°13'45" E (GRID) 4838.16' (HORIZ.) S 00°27'10" E 5351.09' S 89°38'59" W 2672.59'</p>	

RRC - Firm No.: TX 10193838 NM 4655451 - Job No.: LS1506313

MEWBOURNE OIL COMPANY

RED HILLS WEST 21 W1AP FED COM #3H
(185' FNL & 650' FEL)
SECTION 21, T26S, R32E
N. M. P. M., LEA COUNTY, NEW MEXICO



DIRECTIONS TO LOCATION

From the intersection of CR-1 (Orla Hwy.) and CR-2 (Battle Axe Rd.)
Go Northeast on CR-1 approx. 1.0 mile to a lease road on the right;
Turn right and go Southeast on Lease Road approx. 0.1 miles to a "Y";
Stay left at "Y" and go East approx. 1.1 miles;
Road curves right and continue Southeast approx 0.1 miles to lease road on right;
Turn right and go Southwest approx. 0.1 miles to this Location.

Firm No.: TX 10193838 NM 4655451

Copyright 2015 - All Rights Reserved

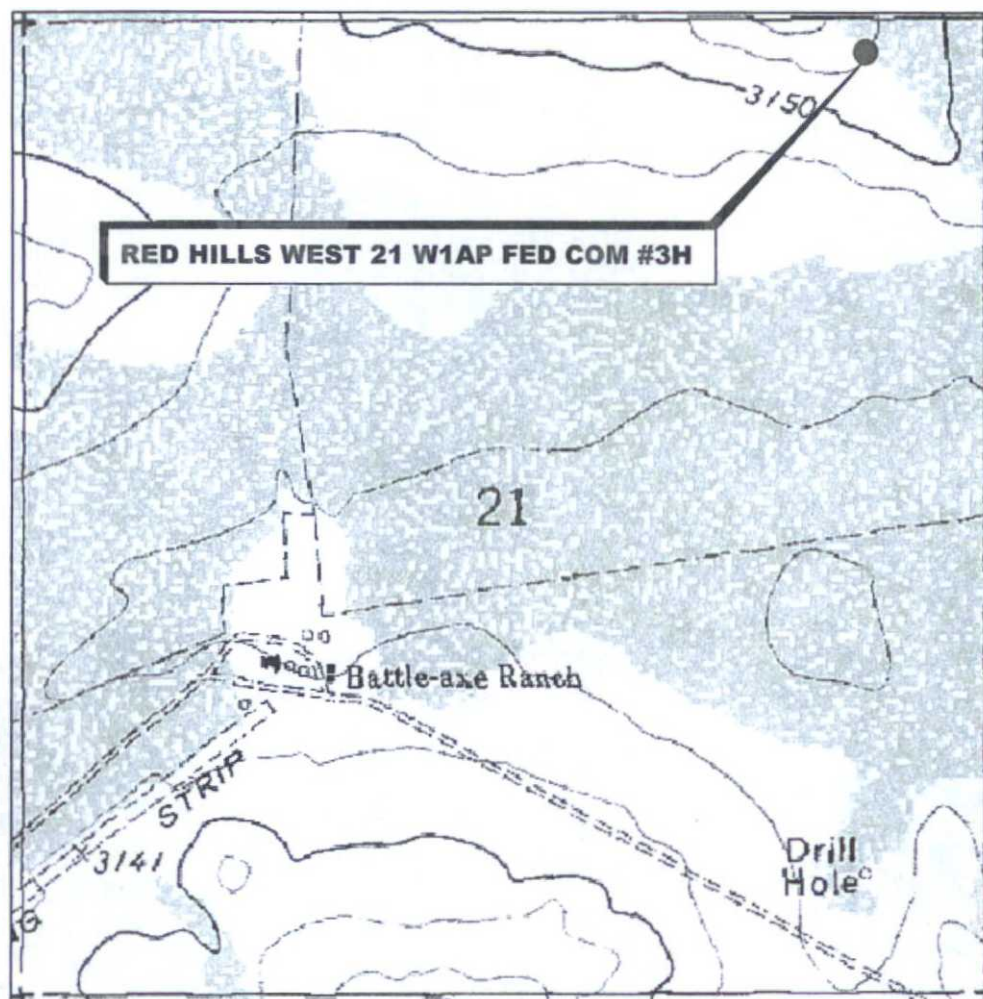
NO.	REVISION	DATE
JOB NO.:	LS1506313	
DWG. NO.:	1506313PAD	

RRC

308 W. BROADWAY ST., HOBBS, NM 88240 (575) 964-8200

SCALE: 1" = 100'
DATE: 6-25-2015
SURVEYED BY: ML/AA
DRAWN BY: PDJ
APPROVED BY: RMH
SHEET: 1 OF 1

LOCATION VERIFICATION MAP



*SECTION 21, TWP. 26 SOUTH, RGE. 32 EAST,
N. M. P. M., LEA CO., NEW MEXICO*

OPERATOR: Mewbourne Oil Company
LEASE: Red Hills West 21 W1AP Fed Com
WELL NO.: 3H
ELEVATION: 3163'

LOCATION: 185' FNL & 650' FEL
CONTOUR INTERVAL: 10'
USGS TOPO. SOURCE MAP:
Paduca Breaks West, NM (1973)

Firm No.: TX 10193838 NM 4655451

Copyright 2015 - All Rights Reserved

NO.	REVISION	DATE
JOB NO.: LS1506313		
DWG. NO.: 1506313LVM		

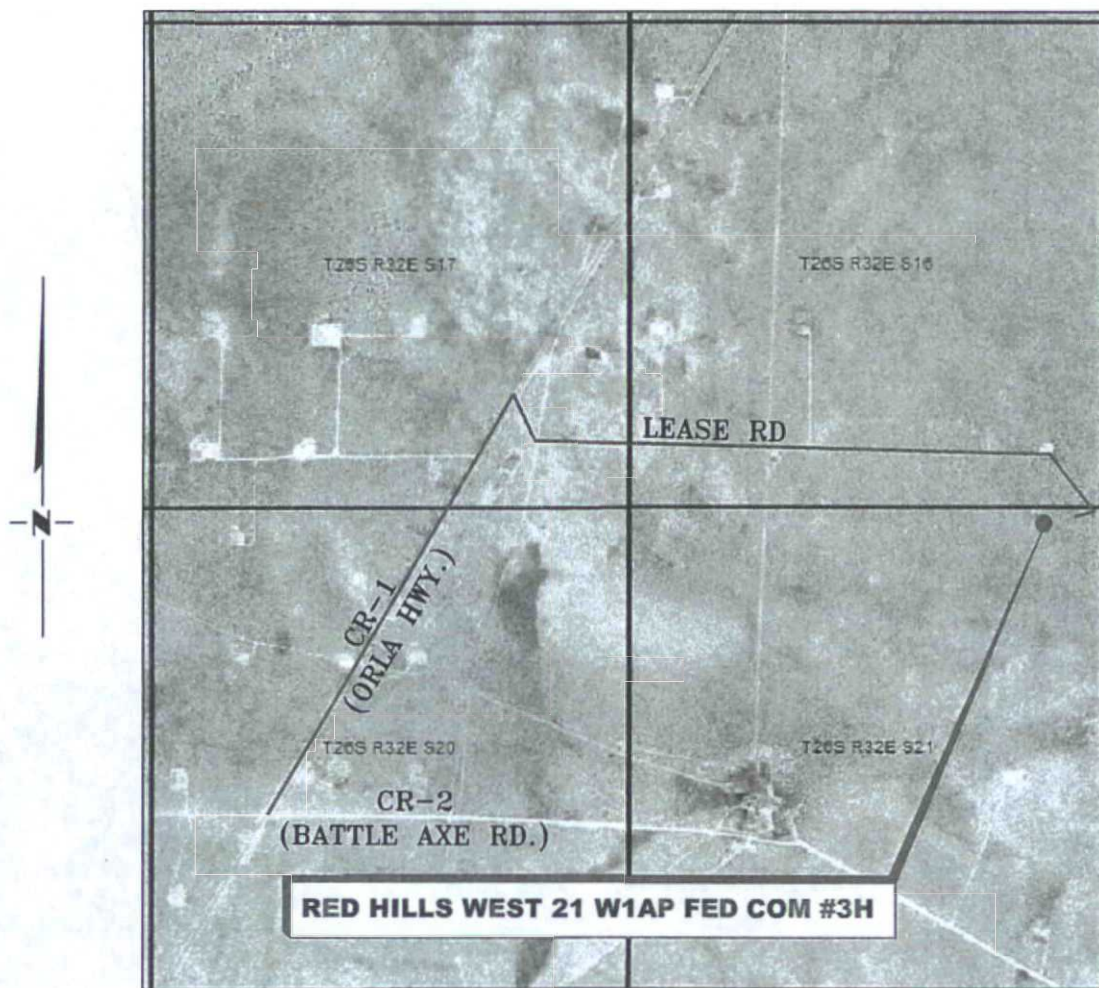
RRC

308 W. BROADWAY ST., HOBBS, NM 88240 (575) 964-8200

SCALE: 1000'
DATE: 6-25-2015
SURVEYED BY: ML/AA
DRAWN BY: PDJ
APPROVED BY: RMH
SHEET : 1 OF 1

VICINITY MAP

NOT TO SCALE



SECTION 21, TWP. 26 SOUTH, RGE. 32 EAST,
N. M. P. M., LEA CO., NEW MEXICO

OPERATOR: Mewbourne Oil Company
LEASE: Red Hills West 21 W1AP Fed Com
WELL NO.: 3H

LOCATION: 185' FNL & 650' FEL
ELEVATION: 3163'

Firm No.: TX 10193838 NM 4655451

Copyright 2015 - All Rights Reserved

NO.	REVISION	DATE
JOB NO.: LS1506313		
DWG. NO.: 1506313VM		

RRC

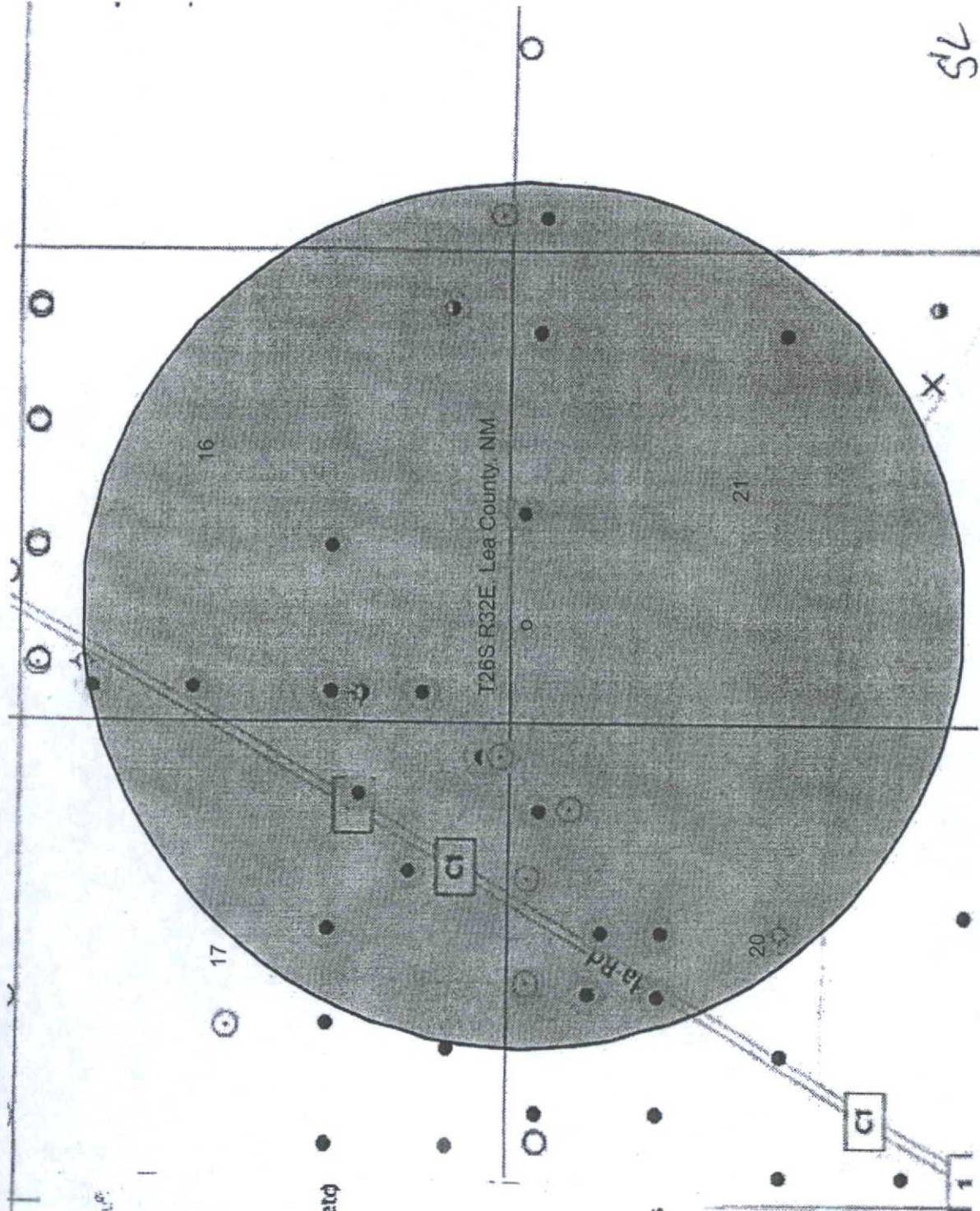
308 W. BROADWAY ST., HOBBS, NM 88240 (575) 964-8200

SCALE: NTS
DATE: 6-25-2015
SURVEYED BY: ML/AA
DRAWN BY: PDJ
APPROVED BY: RMH
SHEET : 1 OF 1

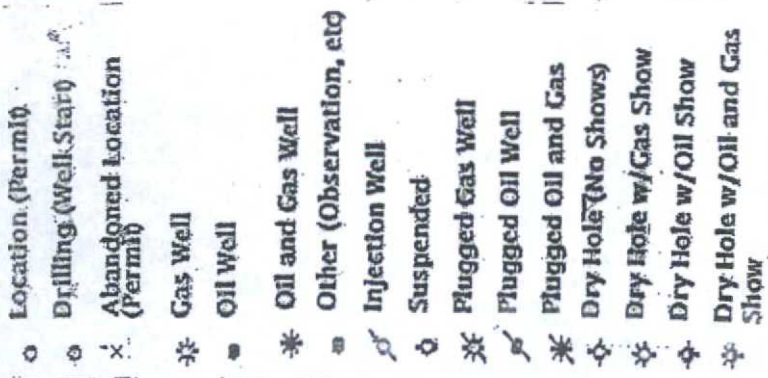
- Location (Permit)
- Drilling (Well Start)
- Abandoned Location (Permit)
- Gas Well
- Oil Well
- Oil and Gas Well
- Other (Observation, etc)
- Injection Well
- Suspended
- Plugged Gas Well
- Plugged Oil Well
- Plugged Oil and Gas
- Dry Hole (No Shows)
- Dry Hole w/Gas Show
- Dry Hole w/Oil Show
- Dry Hole w/Oil and Gas Show

EXHIBIT "4"

Red Hills West 21 W1AP Fed Com #3H

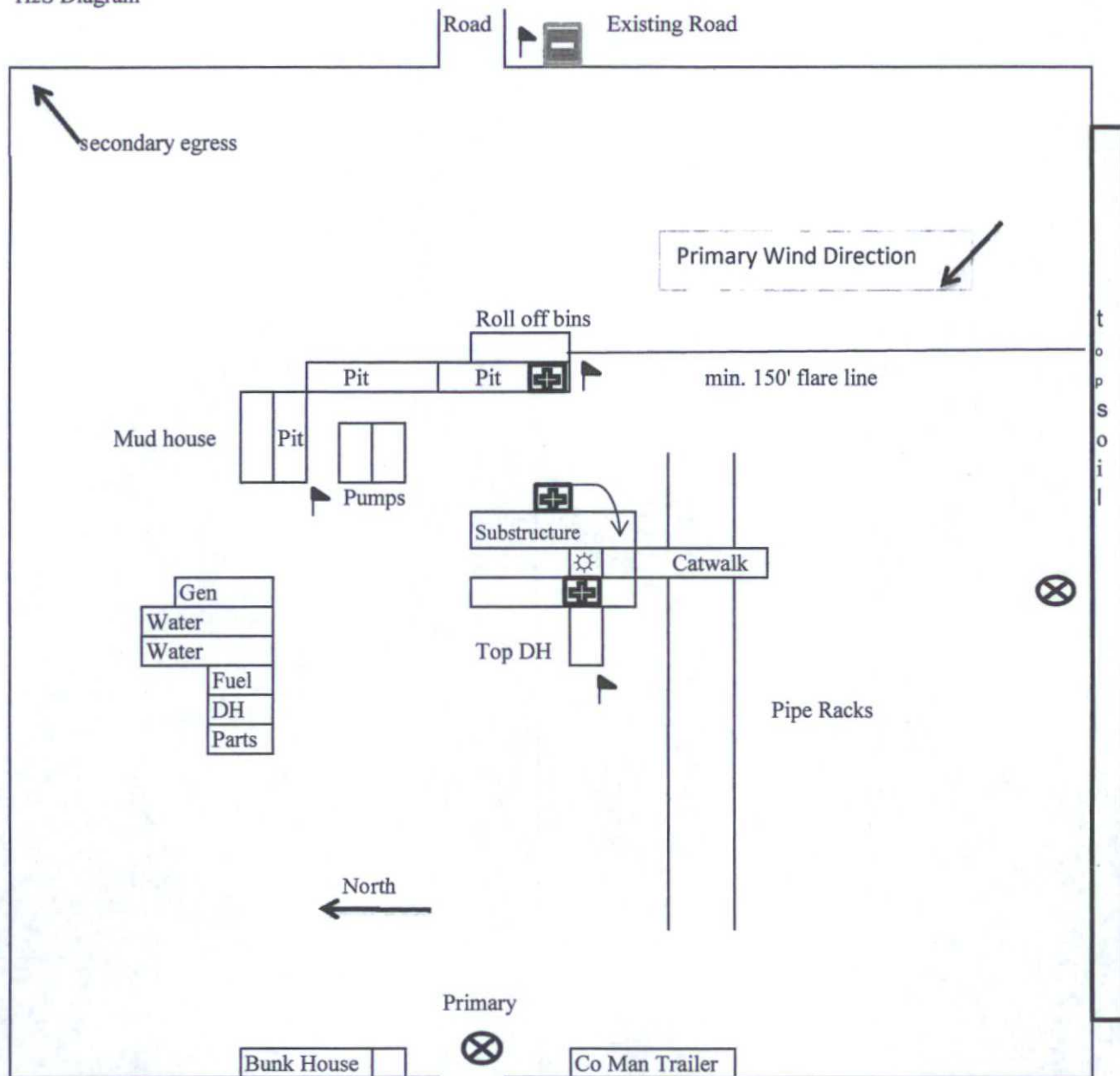


SL



Red Hills West 21 W1AP Fed Com #3H

H2S Diagram



Mewbourne Oil Company
 Red Hills West 22 W1AP Fed Com #3H
 185' FNL & 650' FEL
 Sec. 21 T26S R32E
 Eddy County, NM

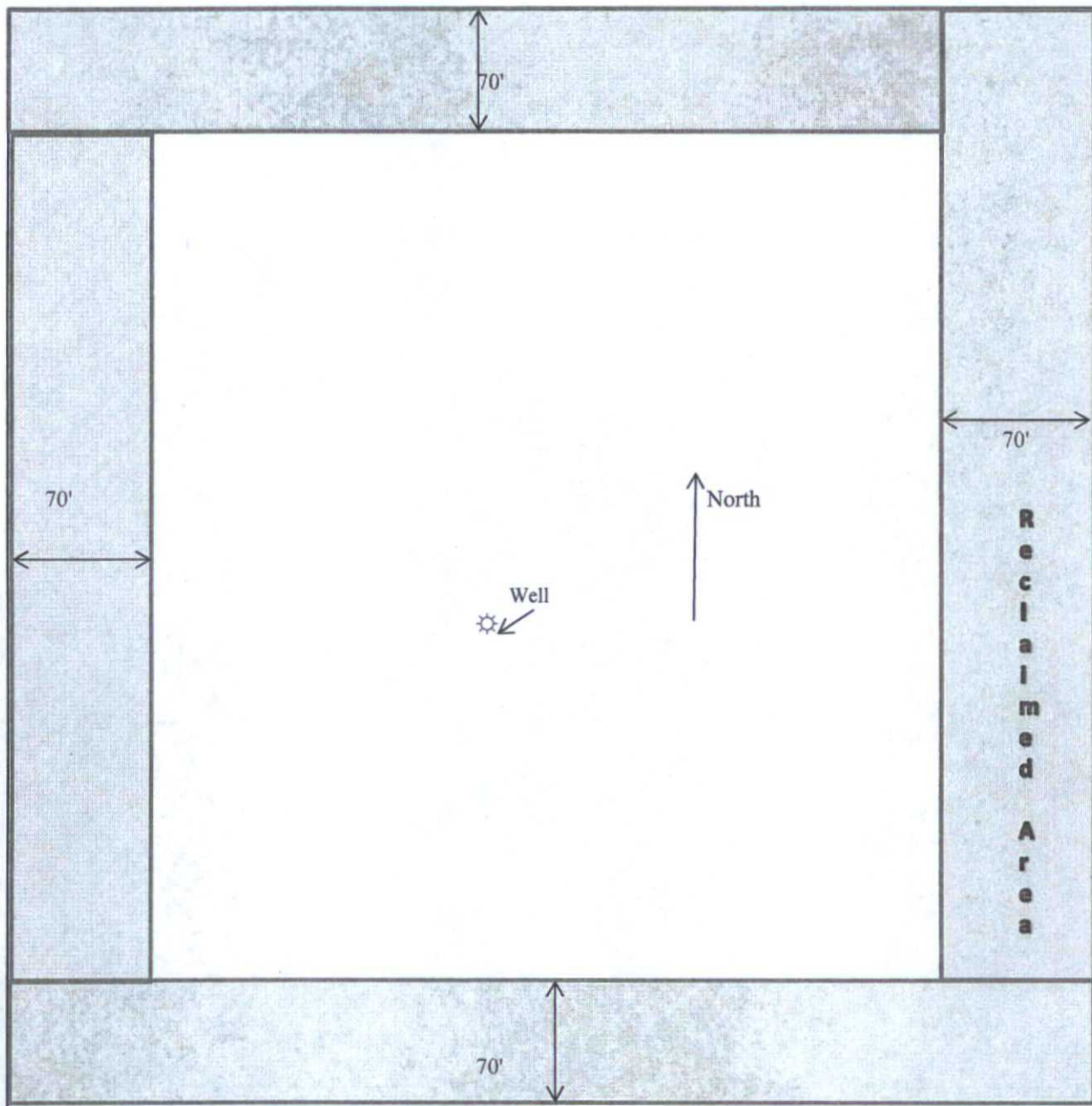
= Warning Signs

= Wind Markers

= H2S Monitors

= Safety Stations

Interim Reclamation Diagram



Mewbourne Oil Company
Red Hills West 21 W1AP Fed Com #3H
185' FNL & 650' FEL
Sec 21 T26S R32E
Lea County, NM

Form NM 8140-9
(March 2008)
United States Department of the Interior
Bureau of Land Management
New Mexico State Office

Permian Basin Cultural Resource Mitigation Fund

The company shown below has agreed to contribute funding to the Permian Basin Cultural Resource Fund in lieu of being required to conduct a Class III survey for cultural resources associated with their project. This form verifies that the company has elected to have the Bureau of Land Management (BLM) follow the procedures specified within the Memorandum of Agreement (MOA) concerning improved strategies for managing historic properties within the Permian Basin, New Mexico, for the undertaking rather than the Protocol to meet the agency's Section 106 obligations.

Company Name: Mewbourne Oil Company

Address: PO Box 5270

Hobbs, NM 88241

Project description:

Location & lease road for Red Hills 21 W1AP Fed Com #3H

T. 26S, R. 32E, Section 21 NMPM, Lea County, New Mexico

Amount of contribution: \$ 1599⁰⁰

Provisions of the MOA:

- A. No new Class III inventories are required of industry within the Project Area for those projects where industry elects to contribute to the mitigation fund.
- B. The amount of funds contributed was derived from the rate schedule established within Appendix B of the MOA. The amount of the funding contribution acknowledged on this form reflects those rates.
- C. The BLM will utilize the funding to carry out a program of mitigation at high-priority sites whose study is needed to answer key questions identified within the Regional Research Design.
- D. Donating to the fund is voluntary. Industry acknowledges that it is aware it has the right to pay for Class III survey rather than contributing to the mitigation fund, and that it must avoid or fund data recovery at those sites already recorded that are eligible for nomination to the National Register or whose eligibility is unknown and that any such payments are independent of the mitigation funds established by this MOA.
- E. Previously recorded archeological sites determined eligible for nomination to the National Register or whose eligibility remains undetermined must be avoided or mitigated.
- F. If any skeletal remains that might be human or funerary objects are discovered by any activities, the land-use applicant will cease activities in the area of discovery, protect the remains, and notify the BLM within 24 hours. The BLM will determine the appropriate treatment of the remains in consultation with culturally affiliated Indian Tribe(s) and lineal descendents. Applicants will be required to pay for treatment of the cultural items independent and outside of the mitigation fund.



Company-Authorized Officer

7.24.15

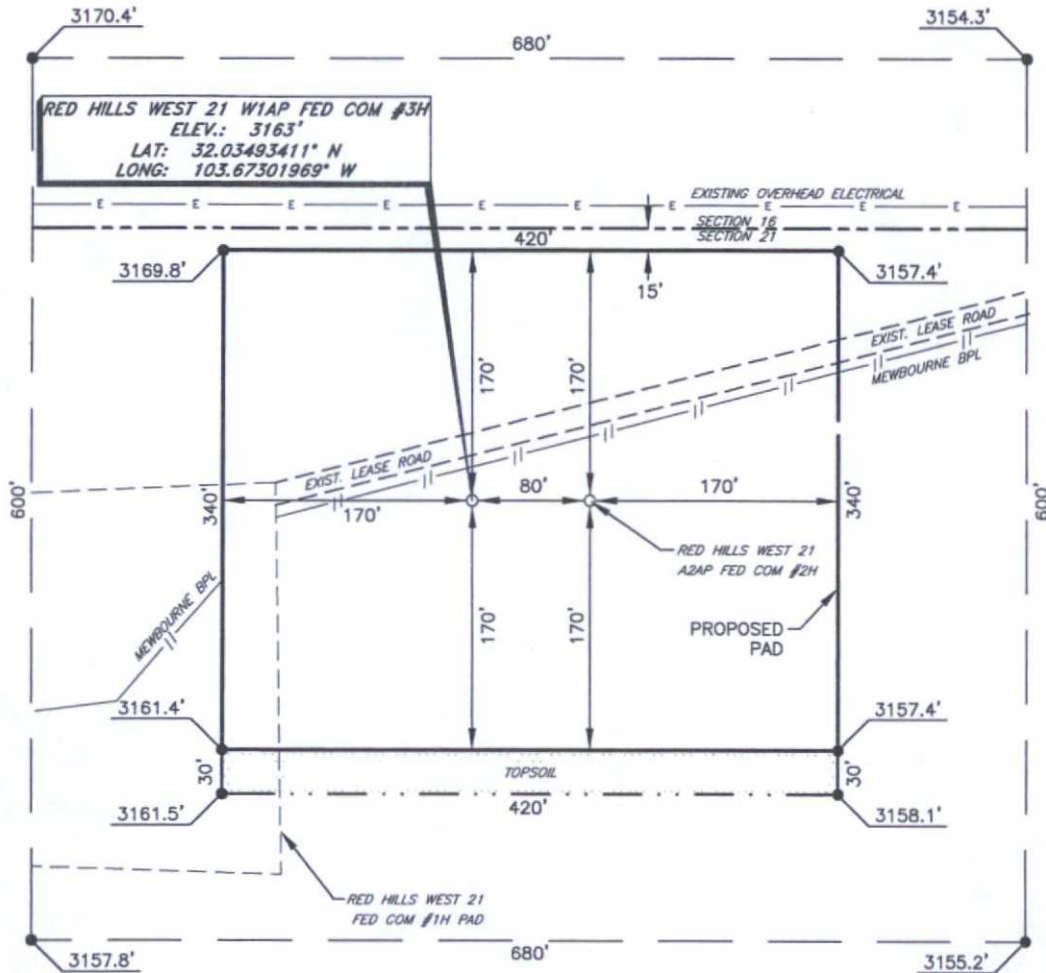
Date

BLM-Authorized Officer

Date

MEWBOURNE OIL COMPANY

RED HILLS WEST 21 W1AP FED COM #3H
(185' FNL & 650' FEL)
SECTION 21, T26S, R32E
N. M. P. M., LEA COUNTY, NEW MEXICO



DIRECTIONS TO LOCATION

From the intersection of CR-1 (Orla Hwy.) and CR-2 (Battle Axe Rd.)
Go Northeast on CR-1 approx. 1.0 mile to a lease road on the right;
Turn right and go Southeast on Lease Road approx. 0.1 miles to a "Y";
Stay left at "Y" and go East approx. 1.1 miles;
Road curves right and continue Southeast approx 0.1 miles to lease road on right;
Turn right and go Southwest approx. 0.1 miles to this Location.

N

SCALE: 1" = 100'
0 50 100

BEARINGS ARE
NAD 27 GRID - NM EAST
DISTANCES ARE GROUND

Firm No.: TX 10193838 NM 4655451

Copyright 2015 - All Rights Reserved

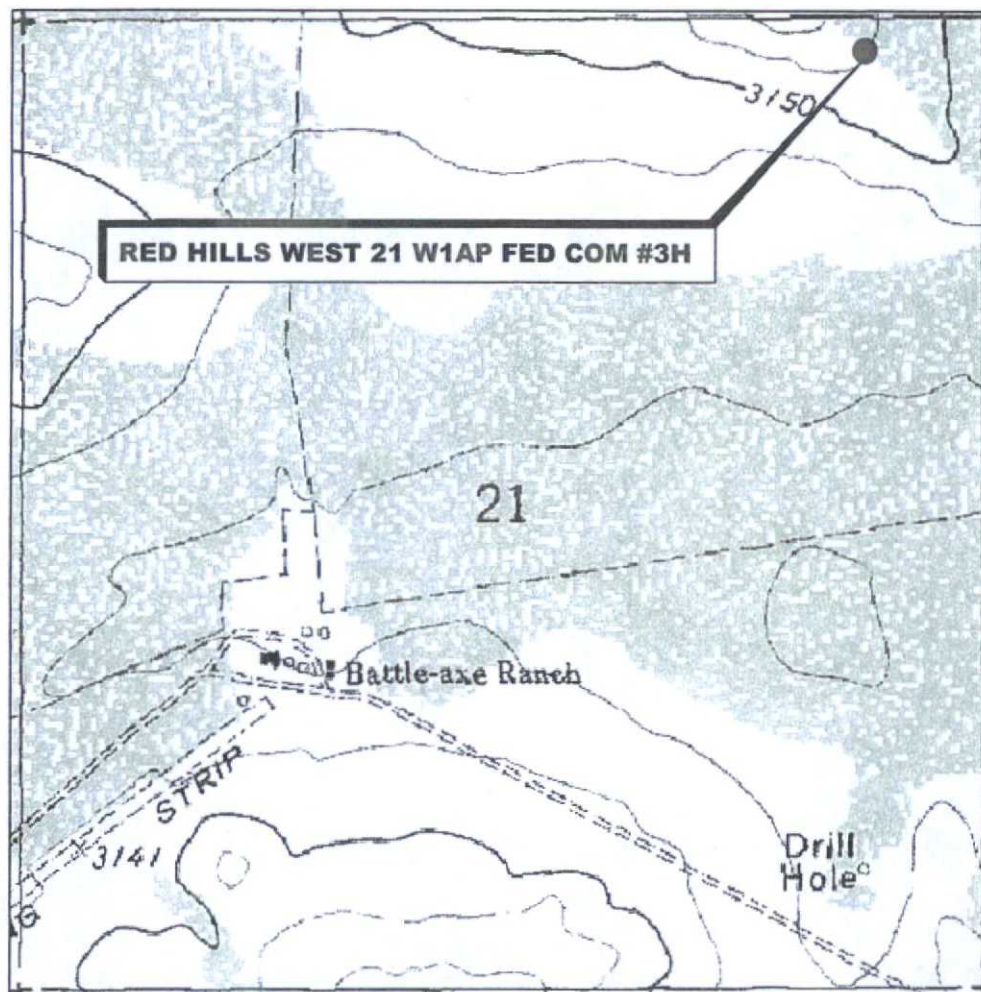
NO.	REVISION	DATE
JOB NO.:	LS1506313	
DWG. NO.:	1506313PAD	

RRC

308 W. BROADWAY ST., HOBBS, NM 88240 (575) 964-8200

SCALE: 1" = 100'
DATE: 6-25-2015
SURVEYED BY: ML/AA
DRAWN BY: PDJ
APPROVED BY: RMH
SHEET : 1 OF 1

LOCATION VERIFICATION MAP



*SECTION 21, TWP. 26 SOUTH, RGE. 32 EAST,
N. M. P. M., LEA CO., NEW MEXICO*

OPERATOR: Mewbourne Oil Company
LEASE: Red Hills West 21 W1AP Fed Com
WELL NO.: 3H
ELEVATION: 3163'

LOCATION: 185' FNL & 650' FEL
CONTOUR INTERVAL: 10'
USGS TOPO. SOURCE MAP:
Paduca Breaks West, NM (1973)

Firm No.: TX 10193838 NM 4655451

Copyright 2015 - All Rights Reserved

NO.	REVISION	DATE
JOB NO.: LS1506313		
DWG. NO.: 1506313LVM		

RRC

308 W. BROADWAY ST., HOBBS, NM 88240 (575) 964-8200

SCALE: 1000'
DATE: 6-25-2015
SURVEYED BY: ML/AA
DRAWN BY: PDJ
APPROVED BY: RMH
SHEET : 1 OF 1

VICINITY MAP

NOT TO SCALE



*SECTION 21, TWP. 26 SOUTH, RGE. 32 EAST,
N. M. P. M., LEA CO., NEW MEXICO*

OPERATOR: Mewbourne Oil Company
LEASE: Red Hills West 21 W1AP Fed Com
WELL NO.: 3H

LOCATION: 185' FNL & 650' FEL
ELEVATION: 3163'

Firm No.: TX 10193838 NM 4655451

Copyright 2015 - All Rights Reserved

NO.	REVISION	DATE
JOB NO.: LS1506313		
DWG. NO.: 1506313VM		

RRC

308 W. BROADWAY ST., HOBBS, NM 88240 (575) 964-8200

SCALE: NTS
DATE: 6-25-2015
SURVEYED BY: ML/AA
DRAWN BY: PDJ
APPROVED BY: RMH
SHEET : 1 OF 1