

District I  
1625 N. French Dr., Hobbs, NM 88240  
Phone: (575) 393-6161 Fax: (575) 393-0720  
District II  
811 S. First St., Artesia, NM 88210  
Phone: (575) 748-1283 Fax: (575) 748-9720  
District III  
1000 Rio Brazos Road, Aztec, NM 87410  
Phone: (505) 334-6178 Fax: (505) 334-6170  
District IV  
1220 S. St. Francis Dr., Santa Fe, NM 87505  
Phone: (505) 476-3460 Fax: (505) 476-3462

State of New Mexico  
Energy, Minerals & Natural Resources Department  
OIL CONSERVATION DIVISION  
1220 South St. Francis Dr.  
Santa Fe, NM 87505

Form C-102  
Revised August 1, 2011  
Submit one copy to appropriate  
District Office

HOBBBS OCD  
OCT 30 2015

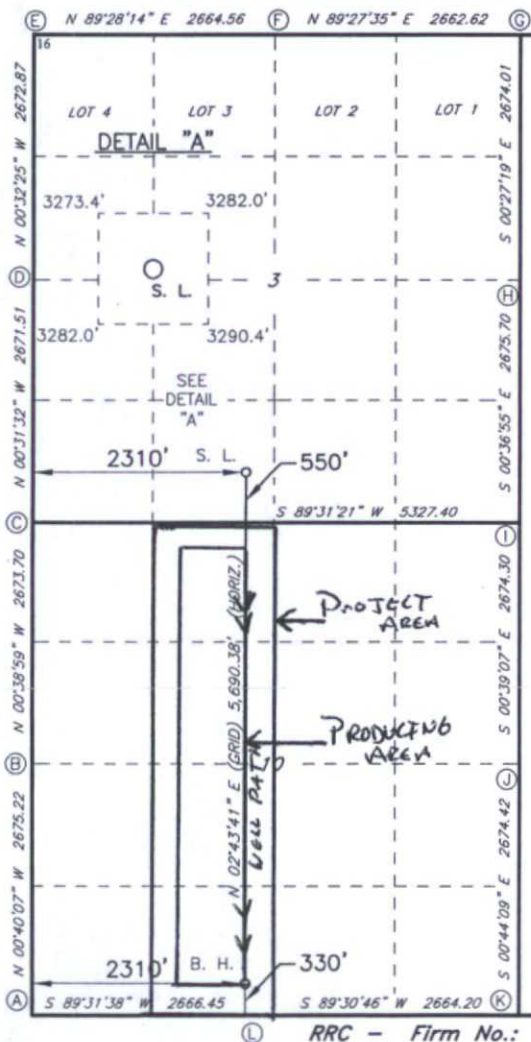
☐ AMENDED REPORT

RECEIVED

WELL LOCATION AND ACREAGE DEDICATION PLAT

<sup>1</sup> API Number <b>38-025-42909</b>		<sup>2</sup> Pool Code <b>97838</b>		<sup>3</sup> Pool Name <b>JENNINGS UPPER BONE SPRING SHALE</b>					
<sup>4</sup> Property Code <b>39542</b>		<sup>5</sup> Property Name <b>RED HILLS WEST UNIT</b>						<sup>6</sup> Well Number <b>16H</b>	
<sup>7</sup> OGRID NO. <b>14744</b>		<sup>8</sup> Operator Name <b>MEWBOURNE OIL COMPANY</b>						<sup>9</sup> Elevation <b>3199'</b>	
<sup>10</sup> Surface Location									
UL or lot no. <b>N</b>	Section <b>3</b>	Township <b>26S</b>	Range <b>32E</b>	Lot Idn	Feet from the <b>550</b>	North/South line <b>NORTH</b>	Feet From the <b>2310</b>	East/West line <b>WEST</b>	County <b>LEA</b>
<sup>11</sup> Bottom Hole Location If Different From Surface									
UL or lot no. <b>N</b>	Section <b>10</b>	Township <b>26S</b>	Range <b>32E</b>	Lot Idn	Feet from the <b>330</b>	North/South line <b>SOUTH</b>	Feet from the <b>2310</b>	East/West line <b>WEST</b>	County <b>LEA</b>
<sup>12</sup> Dedicated Acres <b>160</b>		<sup>13</sup> Joint or Infill		<sup>14</sup> Consolidation Code		<sup>15</sup> Order No.			

No allowable will be assigned to this completion until all interest have been consolidated or a non-standard unit has been approved by the division.



GEODETIC DATA

NAD 27 GRID - NM EAST

SURFACE LOCATION

N 388515.9 - E 707493.1

LAT 32.06637544° N  
LONG 103.66351286° W

BOTTOM HOLE

N 382948.3 - E 707555.9

CORNER DATA

NAD 27 GRID - NM EAST

A: FOUND BRASS CAP "1939"

N 382599.3 - E 705250.3

B: FOUND BRASS CAP "1939"

N 385273.8 - E 705219.0

C: FOUND BRASS CAP "1939"

N 387946.8 - E 705188.7

D: FOUND BRASS CAP "1939"

N 390617.7 - E 705164.2

E: FOUND BRASS CAP "1916"

N 393289.9 - E 705139.0

F: FOUND BRASS CAP "1916"

N 393314.6 - E 707803.0

G: FOUND BRASS CAP "1916"

N 393339.7 - E 710464.9

H: FOUND BRASS CAP "1939"

N 390666.2 - E 710486.2

I: FOUND BRASS CAP "1939"

N 387991.2 - E 710514.9

J: FOUND BRASS CAP "1939"

N 385317.6 - E 710545.3

K: FOUND BRASS CAP "1939"

N 382643.9 - E 710579.7

L: FOUND BRASS CAP "1939"

N 382621.3 - E 707916.1

<sup>17</sup> OPERATOR CERTIFICATION

I hereby certify that the information contained herein is true and complete to the best of my knowledge and belief, and that this organization either owns a working interest or unleased mineral interest in the land including the proposed bottom hole location or has a right to drill this well at this location pursuant to a contract with an owner of such a mineral or working interest, or to a voluntary pooling agreement or a compulsory pooling order heretofore entered by the division.

Signature: **B. Bishop** Date: **5-28-15**  
Printed Name: **BRADLEY BISHOP**

E-mail Address

<sup>18</sup> SURVEYOR CERTIFICATION

I hereby certify that the well location shown on this plat was plotted from field notes of actual surveys made by me or under my supervision, and that the same is true and correct to the best of my belief.

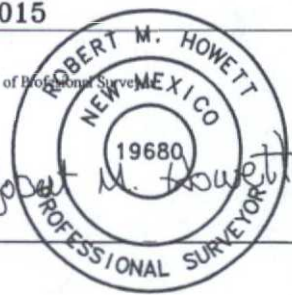
**3-20-2015**

Date of Survey

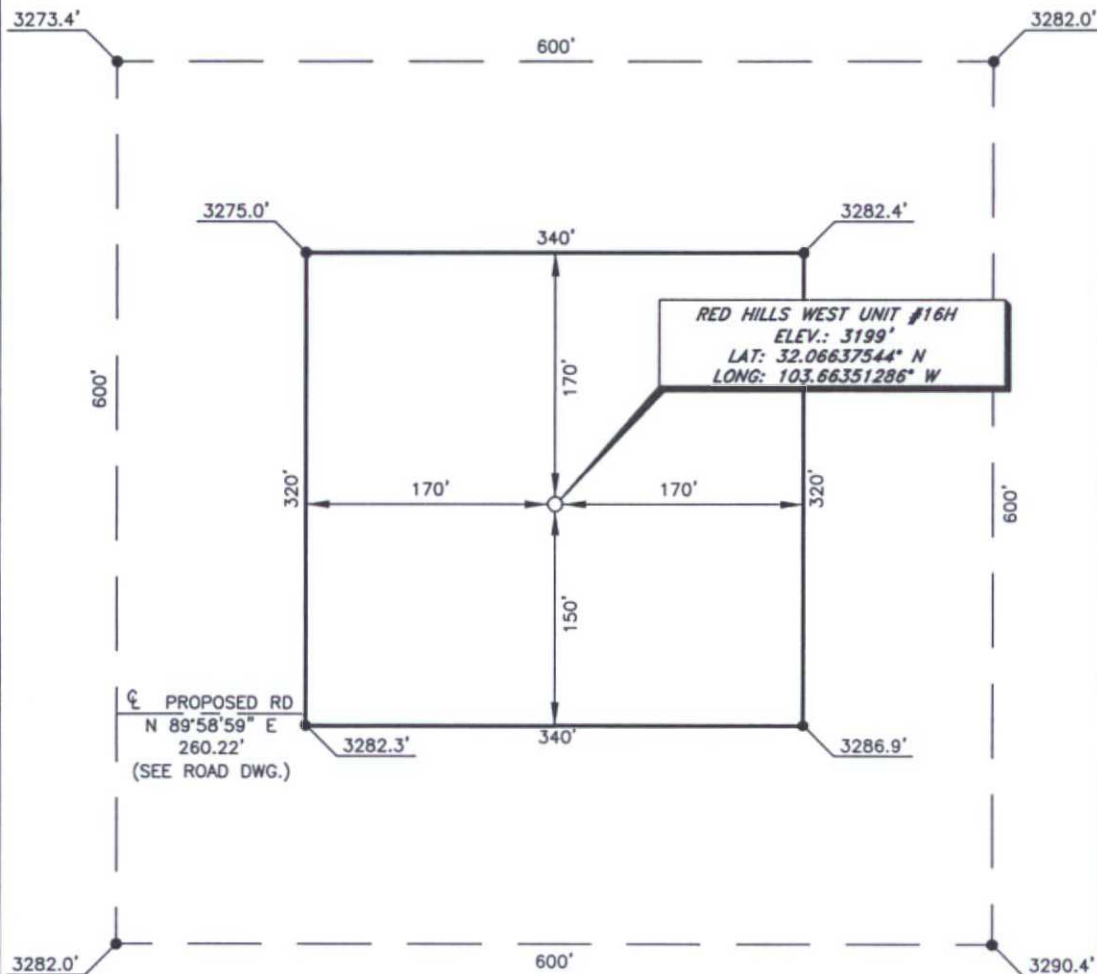
Signature and Seal of Professional Surveyor

**19680**

Certificate Number



MEWBOURNE OIL COMPANY  
 RED HILLS WEST UNIT #16H  
 (550' FSL & 2310" FWL)  
 SECTION 3, T26S, R32E  
 N. M. P. M., LEA CO., NEW MEXICO



DIRECTIONS TO LOCATION

From the intersection of County Road 1 (Orla Road) and Pipeline Road take right;

Go East for approx. 0.5 miles to a proposed road on the left;

Turn left and go Northeast approx. 465 feet;

Turn right and go East approx. 260 feet;

Location is approx. 222 feet Northeast.

SCALE: 1" = 100'  
 0 50 100  
 BEARINGS ARE  
 NAD 27 GRID - NM EAST  
 DISTANCES ARE  
 GROUND.

Firm No.: TX 10193838 NM 4655451

Copyright 2015 - All Rights Reserved

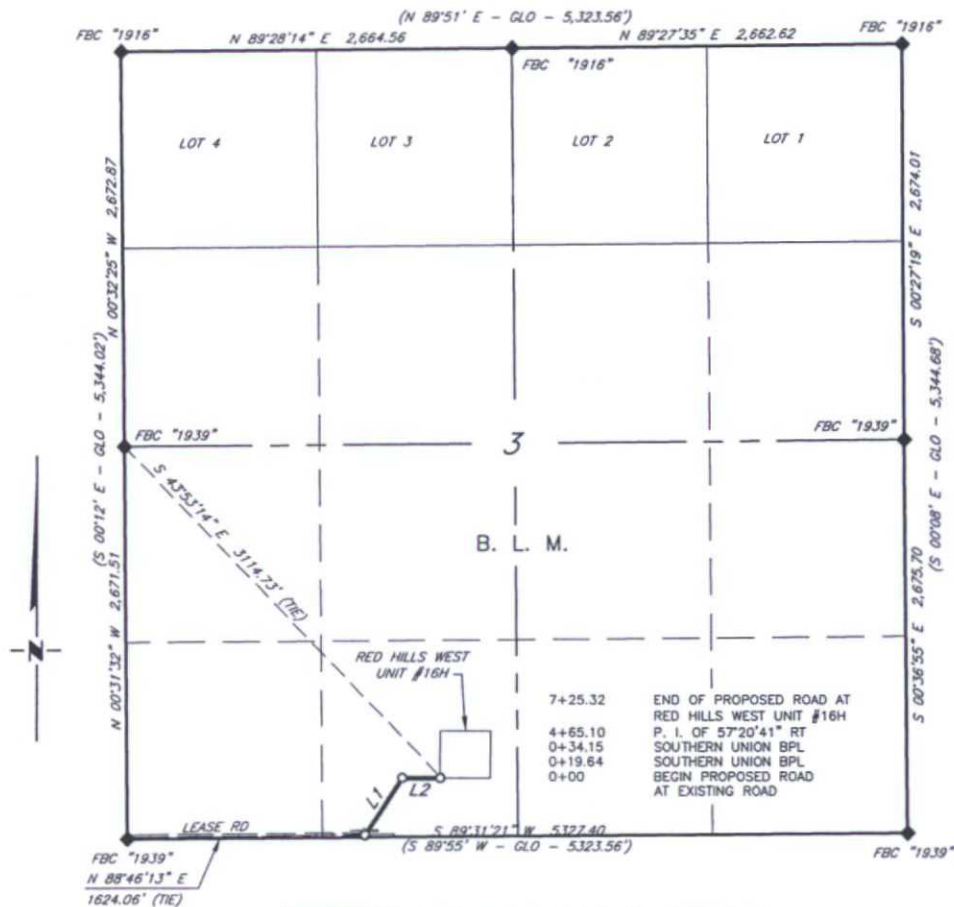
NO.	REVISION	DATE
JOB NO.:	LS1503068	
DWG. NO.:	1503068PAD	

**RRC**

308 W. BROADWAY ST., HOBBS, NM 88240 (575) 964-8200

SCALE: 1" = 100'
DATE: 3-20-15
SURVEYED BY: ML/AA
DRAWN BY: JC
APPROVED BY: RMH
SHEET : 1 OF 3

**MEWBOURNE OIL COMPANY**  
**PROPOSED ROAD EASEMENT FROM AN EXISTING LEASE RD TO**  
**THE RED HILLS WEST UNIT #16H**  
**SECTION 3, T26S, R32E,**  
**N. M. P. M., LEA CO., NEW MEXICO**



LINE TABLE		
LINE	BEARING	LENGTH
L1	N 32°38'18" E	465.10'
L2	N 89°58'59" E	260.22'

SCALE: 1" = 1000'

0 500 1000

BEARINGS ARE GRID NAD 27  
 NM EAST  
 DISTANCES ARE HORIZ. GROUND.

LEGEND  
 ( ) RECORD DATA - GLO  
 ♦ FOUND MONUMENT AS NOTED  
 — PROPOSED ROAD  
 — EXISTING BPL

I, R. M. Howett, a N. M. Professional Surveyor, hereby certify that I prepared this plat from an actual survey made on the ground under my direct supervision, said survey and plat meet the Min. Stds. for Land Surveying in the State of N. M. and are true and correct to the best of my knowledge and belief.

*Robert M. Howett*

Firm No.: TX 10193838 NM 4655451

Robert M. Howett NM PS 19680

Copyright 2014 - All Rights Reserved



NO.	REVISION	DATE
JOB NO.:	LS1503068	
DWG. NO.:	1503068RD1	

**RRC**

308 W. BROADWAY ST., HOBBS, NM 88240 (575) 964-8200

SCALE: 1" = 1000'
DATE: 3-20-15
SURVEYED BY: ML/AA
DRAWN BY: JC
APPROVED BY: RMH
SHEET: 2 OF 3



**MEWBOURNE OIL COMPANY**  
**PROPOSED ROAD EASEMENT FROM AN EXISTING LEASE RD TO**  
**THE RED HILLS WEST UNIT #16H**  
**SECTION 3, T26S, R32E,**  
**N. M. P. M., LEA CO., NEW MEXICO**

DESCRIPTION

A strip of land 30 feet wide, being 725.32 feet or 43.959 rods in length, lying in Section 3, Township 26 South, Range 32 East, N. M. P. M., Lea County, New Mexico, being 15 feet left and 15 feet right of the following described survey of a centerline across B. L. M. land:

BEGINNING at Engr. Sta. 0+00, a point in the Southwest quarter of Section 3, which bears N 88°46'13" E, 1,624.06 feet from a brass cap, stamped "1939", found for the Southwest corner of Section 3;

Thence N 32°38'18" E, 465.10 feet, to Engr. Sta. 4+65.10, a P. I. of 57°20'41" right;

Thence N 89°58'59" E, 260.22 feet, to Engr. Sta. 7+25.32, End of Survey, a point on the Southwest corner of the Red Hills West Unit #16H pad, which bears S 43°53'14" E, 3,114.73 feet from a brass cap, stamped "1939", found for the West quarter corner of Section 3.

Said strip of land contains 0.499 acres, more or less and is allocated by forties as follows:

SE 1/4 SW 1/4                      43.959 Rods                      0.499 Acres

Firm No.: TX 10193838 NM 4655451

Copyright 2015 - All Rights Reserved

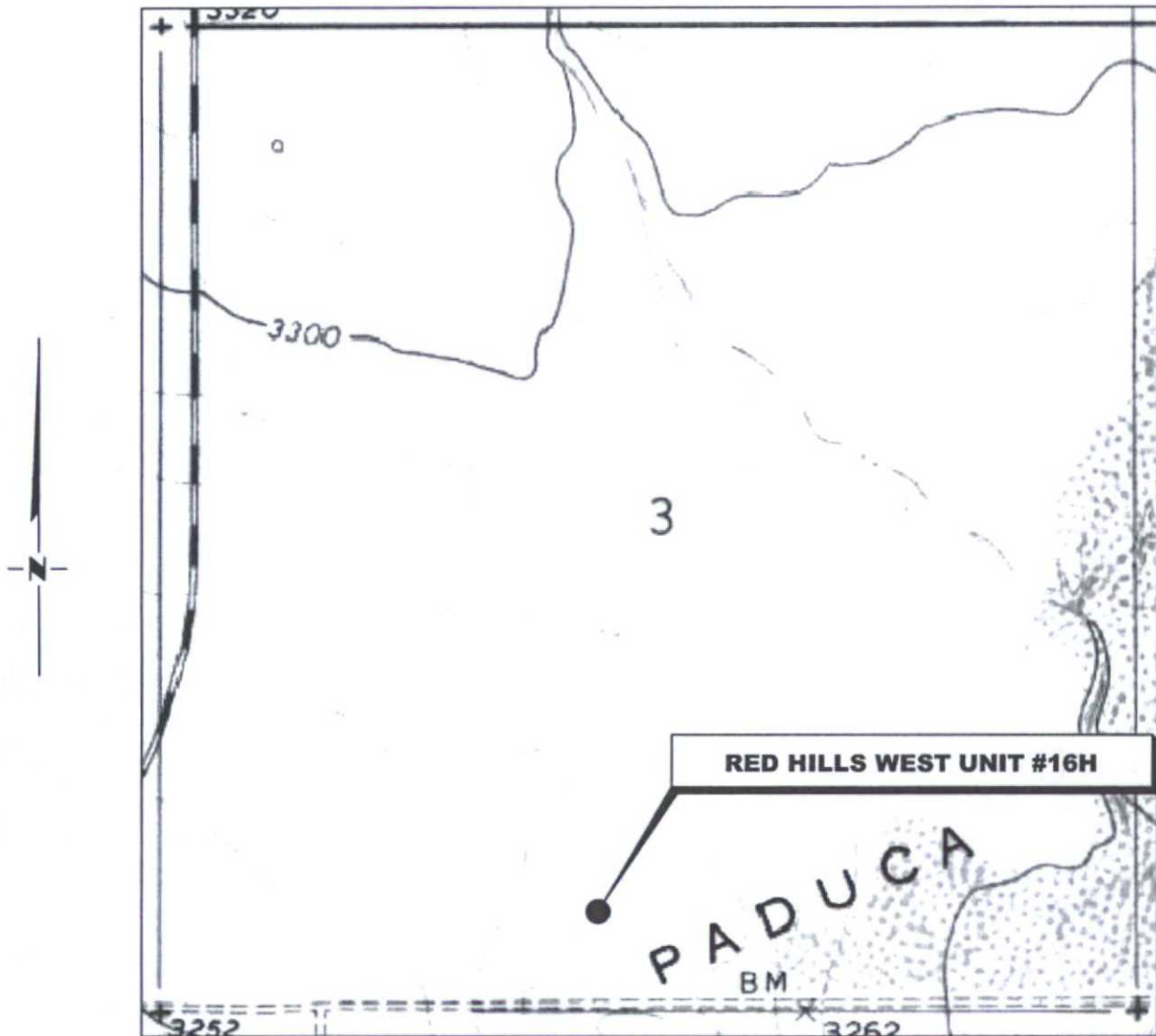
NO.	REVISION	DATE
JOB NO.:	LS1503068	
DWG. NO.:	1503068RD2	

**RRC**

308 W. BROADWAY ST., HOBBS, NM 88240 (575) 964-8200

SCALE: 1" = 1000'
DATE: 3-20-15
SURVEYED BY: ML/AA
DRAWN BY: JC
APPROVED BY: RMH
SHEET : 2 OF 3

# LOCATION VERIFICATION MAP



SECTION 3, TWP. 26 SOUTH, RGE. 32 EAST,  
N. M. P. M., LEA COUNTY, NEW MEXICO

OPERATOR: Mewbourne Oil Company  
LEASE: Red Hills West Unit  
WELL NO.: 16H  
ELEVATION: 3199'

LOCATION: 550' FSL & 2310' FWL  
CONTOUR INTERVAL: 10'  
USGS TOPO. SOURCE MAP:  
Paduca Breaks West, NM (1973)

Firm No.: TX 10193838 NM 4655451

Copyright 2015 - All Rights Reserved

NO.	REVISION	DATE
JOB NO.:	LS1503068	
DWG. NO.:	1503068LVM	

## RRC

308 W. BROADWAY ST., HOBBS, NM 88240 (575) 964-8200

SCALE: N.T.S.
DATE: 3-20-15
SURVEYED BY: BK
DRAWN BY: JC
APPROVED BY: RMH
SHEET : 1 OF 1

# VICINITY MAP

NOT TO SCALE



*SECTION 10, TWP. 26 SOUTH, RGE. 32 EAST,  
N. M. P. M., LEA COUNTY, NEW MEXICO*

OPERATOR: Mewbourne Oil Company

LEASE: Red Hills West Unit

WELL NO.: 16H

LOCATION: 550' FSL & 2310' FWL

ELEVATION: 3199'

Firm No.: TX 10193838 NM 4655451

Copyright 2015 - All Rights Reserved

NO.	REVISION	DATE
JOB NO.: LS1503068		
DWG. NO.: 1503068VM		

# RRC

308 W. BROADWAY ST., HOBBS, NM 88240 (575) 964-8200

SCALE: N.T.S.
DATE: 3-20-15
SURVEYED BY: ML/AA
DRAWN BY: JC
APPROVED BY: RMH
SHEET : 1 OF 1





SESW

Proposed well site

lease road route

gas line route

existing gas line

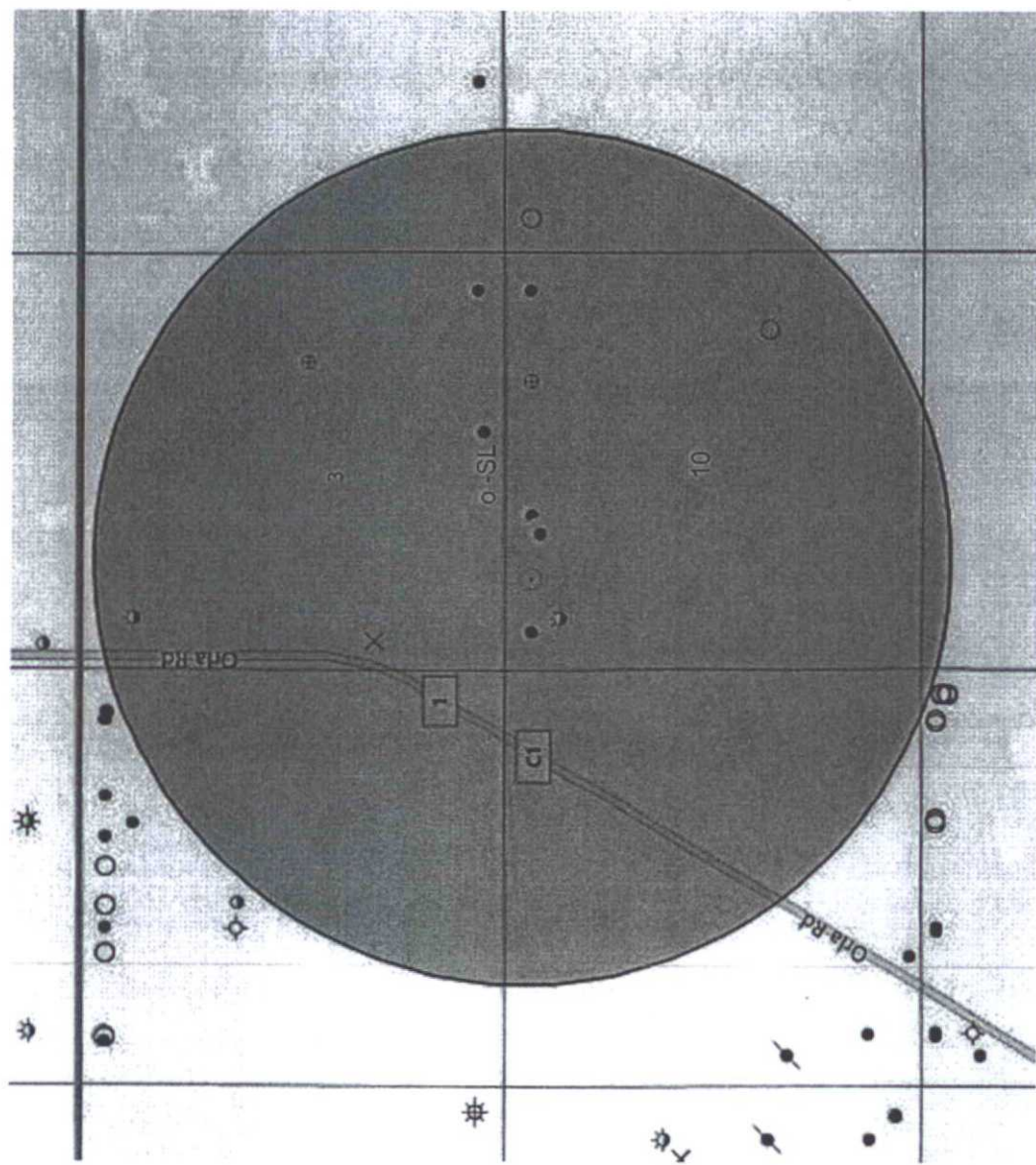
RANNEY 10 22H

NENW

SWSE

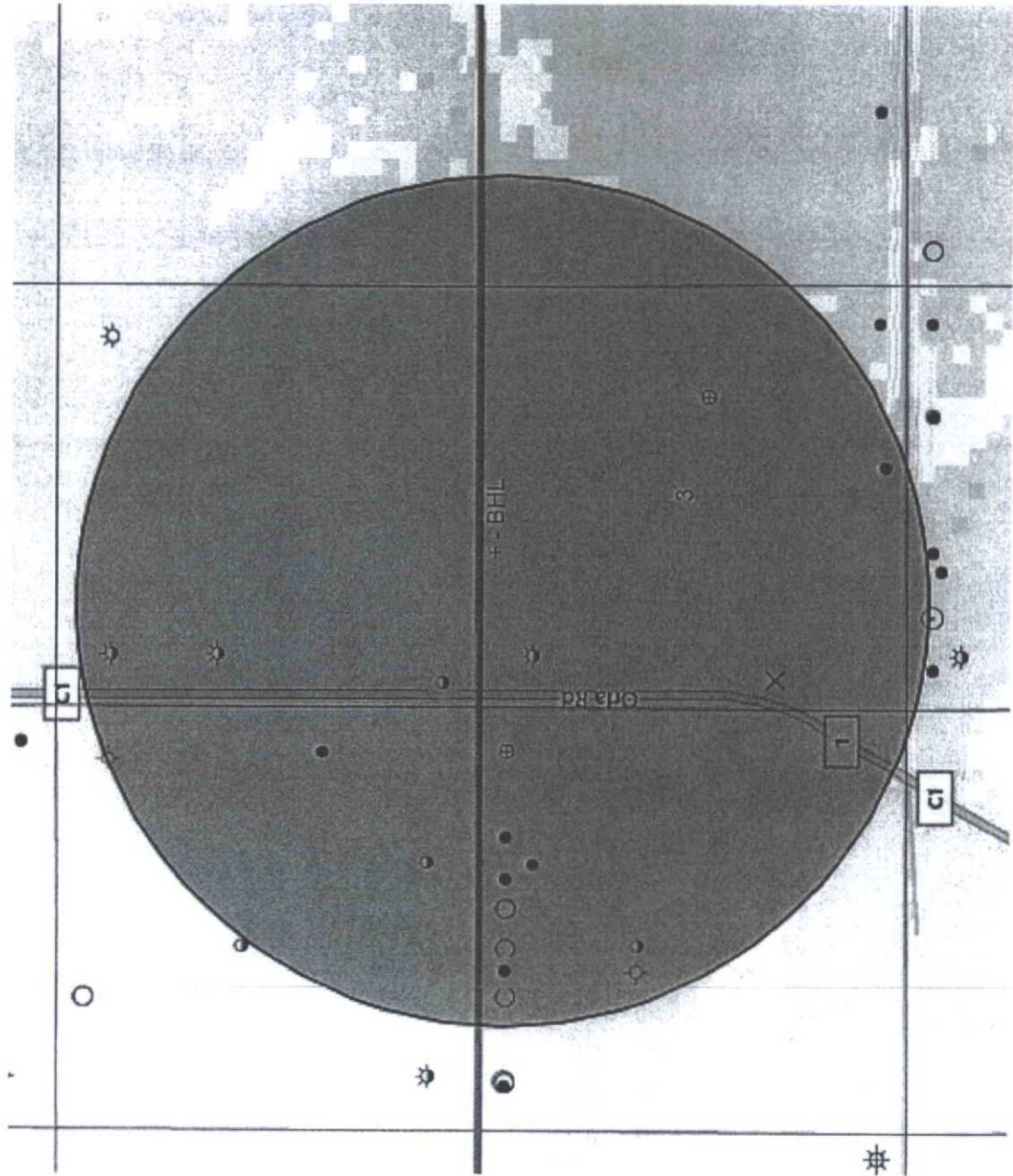
NWNE

Google



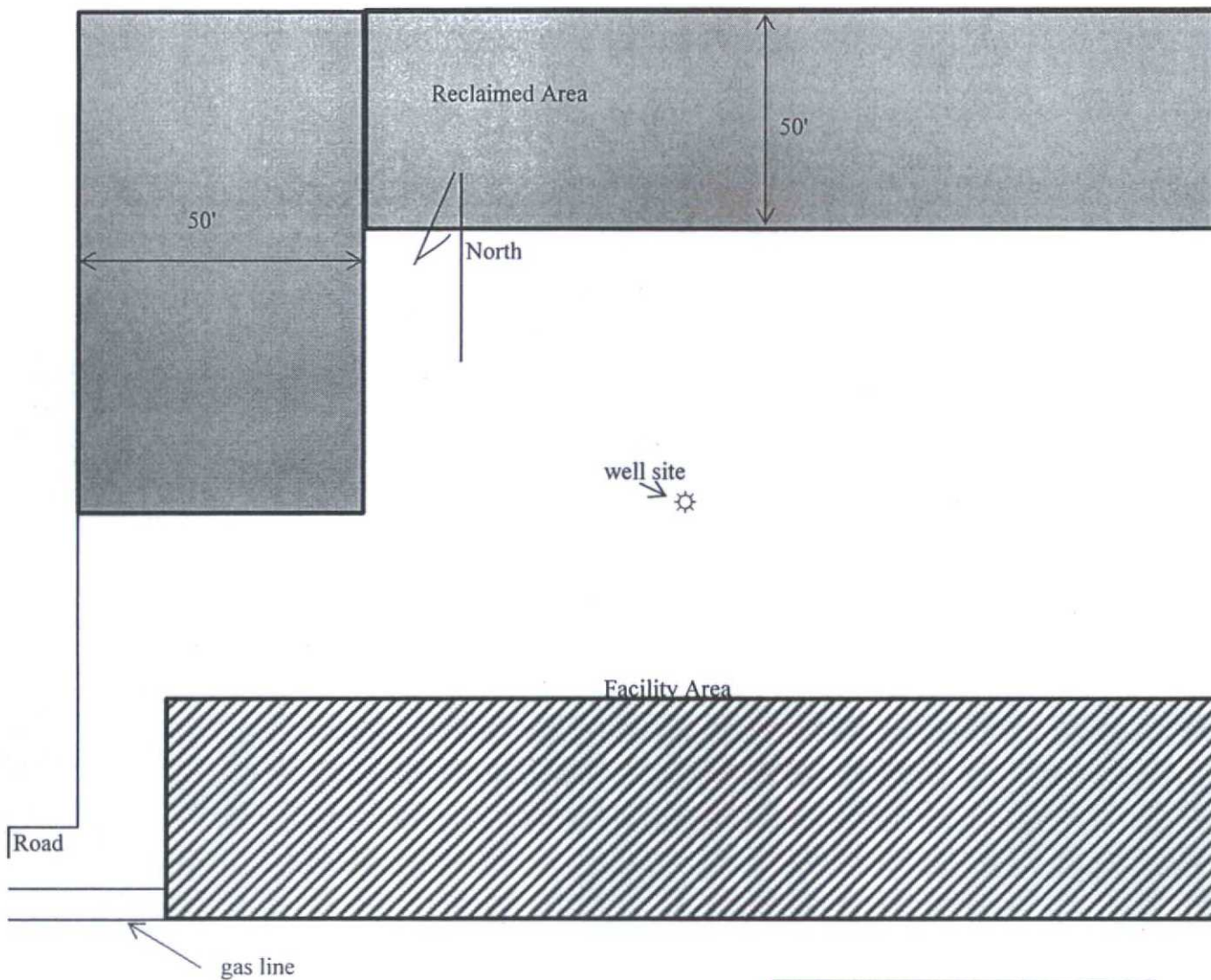
- Drilling (Well Start)
- × Abandoned Location (Permit)
- ⊛ Gas Well
- Oil Well
- ⊛ Oil and Gas Well
- ⊛ Other (Observation, etc)
- ⊛ Injection Well
- ⊛ Suspended
- ⊛ Plugged Gas Well
- ⊛ Plugged Oil Well
- ⊛ Plugged Oil and Gas
- ⊛ Dry Hole (No Shows)
- ⊛ Dry Hole w/Gas Show
- ⊛ Dry Hole w/Oil Show
- ⊛ Dry Hole w/Oil and Gas Show





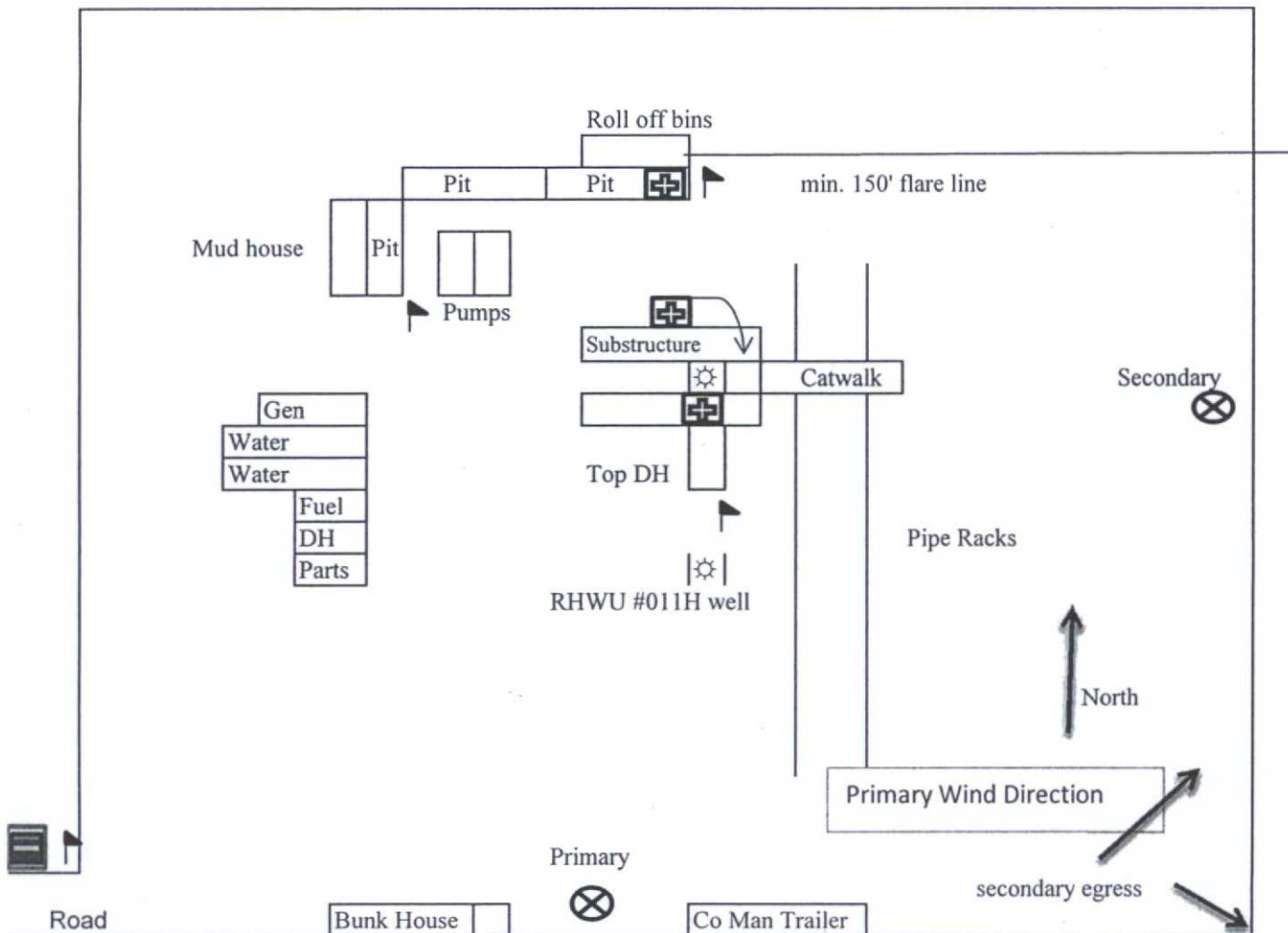
- Drilling (Well Start)
- × Abandoned Location (Permit)
- ⊗ Gas Well
- Oil Well
- ⊕ Oil and Gas Well
- Other (Observation, etc)
- ⊗ Injection Well
- Suspended
- ⊗ Plugged Gas Well
- ⊗ Plugged Oil Well
- ⊗ Plugged Oil and Gas
- ⊗ Dry Hole (No Show)
- ⊗ Dry Hole w/Gas Show
- ⊗ Dry Hole w/Oil Show
- ⊗ Dry Hole w/Oil and Gas Show

Closed Loop Pad Dimensions 320' x 340'

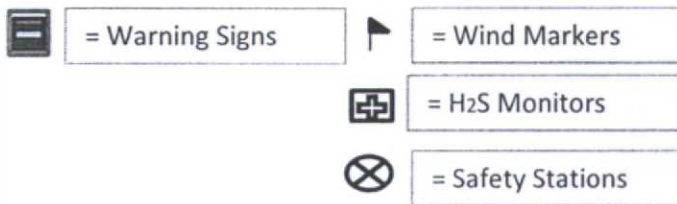


Mewbourne Oil Company  
Red Hills West Unit #016H  
550' FSL & 2310' FWL  
Sec. 3 T26S R32E  
Lea Co. NM

# H2S Diagram



Mewbourne Oil Company  
 Red Hills West Unit #016H  
 550' FSL & 2310' FWL  
 Sec. 3 T26S R32E  
 Lea County, NM





**Form NM 8140-9**  
(March 2008)  
**United States Department of the Interior**  
**Bureau of Land Management**  
**New Mexico State Office**

**Permian Basin Cultural Resource Mitigation Fund**

The company shown below has agreed to contribute funding to the Permian Basin Cultural Resource Fund in lieu of being required to conduct a Class III survey for cultural resources associated with their project. This form verifies that the company has elected to have the Bureau of Land Management (BLM) follow the procedures specified within the Memorandum of Agreement (MOA) concerning improved strategies for managing historic properties within the Permian Basin, New Mexico, for the undertaking rather than the Protocol to meet the agency's Section 106 obligations.

Company Name: Mewbourne Oil Company

Address: PO Box 5270

Hobbs, NM 88241

**Project description:**

Location & lease road for Red Hills West Unit #016H.

T. 26S, R. 32E, Section 3 NMPM, Lea County, New Mexico

Amount of contribution: \$ 1552.00

Provisions of the MOA:

A. No new Class III inventories are required of industry within the Project Area for those projects where industry elects to contribute to the mitigation fund.

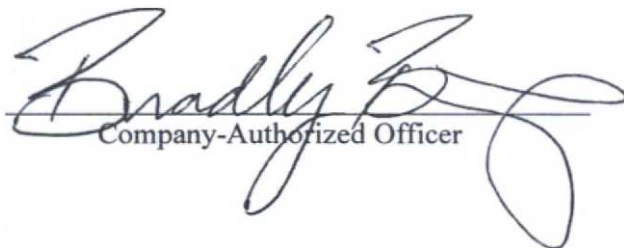
B. The amount of funds contributed was derived from the rate schedule established within Appendix B of the MOA. The amount of the funding contribution acknowledged on this form reflects those rates.

C. The BLM will utilize the funding to carry out a program of mitigation at high-priority sites whose study is needed to answer key questions identified within the Regional Research Design.

D. Donating to the fund is voluntary. Industry acknowledges that it is aware it has the right to pay for Class III survey rather than contributing to the mitigation fund, and that it must avoid or fund data recovery at those sites already recorded that are eligible for nomination to the National Register or whose eligibility is unknown and that any such payments are independent of the mitigation funds established by this MOA.

E. Previously recorded archeological sites determined eligible for nomination to the National Register or whose eligibility remains undetermined must be avoided or mitigated.

F. If any skeletal remains that might be human or funerary objects are discovered by any activities, the land-use applicant will cease activities in the area of discovery, protect the remains, and notify the BLM within 24 hours. The BLM will determine the appropriate treatment of the remains in consultation with culturally affiliated Indian Tribe(s) and lineal descendants. Applicants will be required to pay for treatment of the cultural items independent and outside of the mitigation fund.

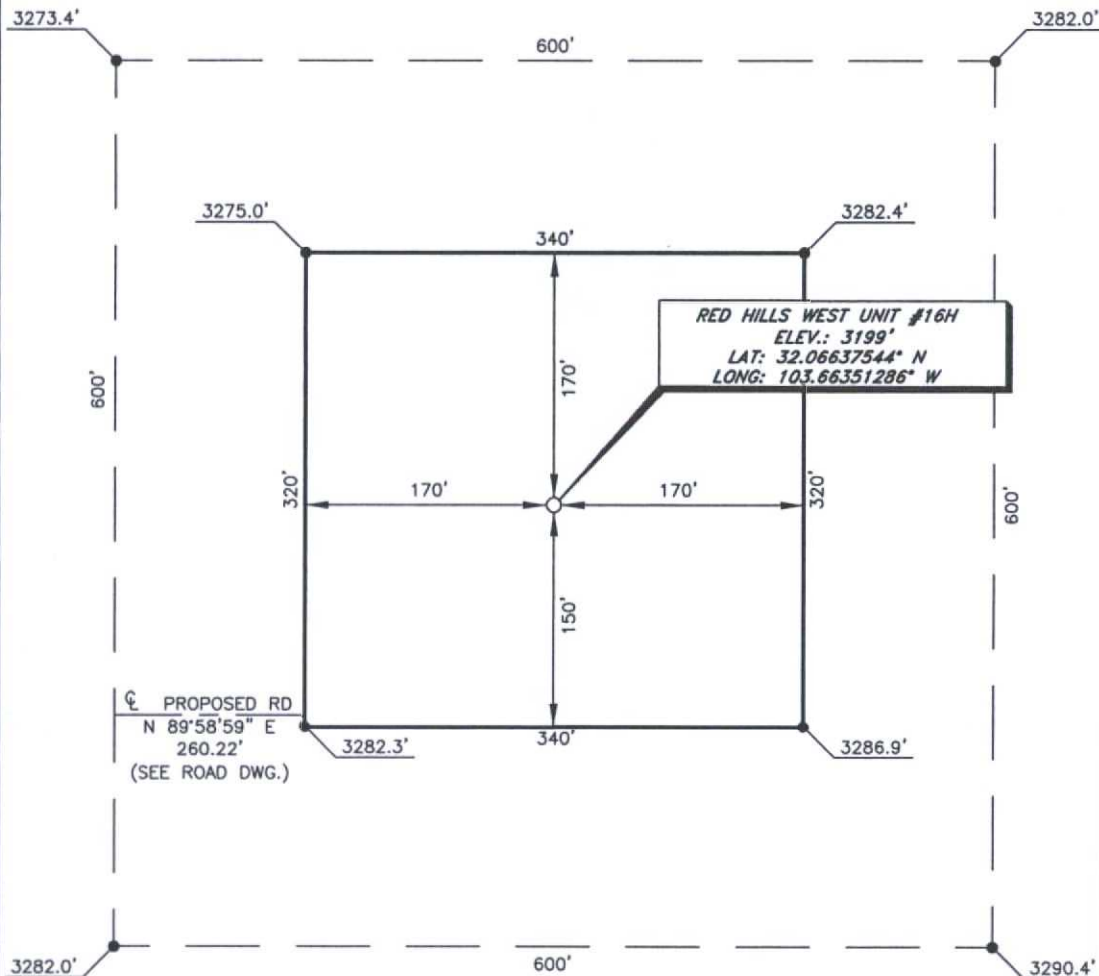
  
Company-Authorized Officer

5-28-15  
Date

\_\_\_\_\_  
BLM-Authorized Officer

\_\_\_\_\_  
Date

MEWBOURNE OIL COMPANY  
 RED HILLS WEST UNIT #16H  
 (550' FSL & 2310" FWL)  
 SECTION 3, T26S, R32E  
 N. M. P. M., LEA CO., NEW MEXICO



DIRECTIONS TO LOCATION

From the intersection of County Road 1 (Orla Road) and Pipeline Road take right;

Go East for approx. 0.5 miles to a proposed road on the left;

Turn left and go Northeast approx. 465 feet;

Turn right and go East approx. 260 feet;

Location is approx. 222 feet Northeast.

SCALE: 1" = 100'  
 0 50 100  
 BEARINGS ARE  
 NAD 27 GRID - NM EAST  
 DISTANCES ARE  
 GROUND.

Firm No.: TX 10193838 NM 4655451

Copyright 2015 - All Rights Reserved

NO.	REVISION	DATE
JOB NO.:	LS1503068	
DWG. NO.:	1503068PAD	

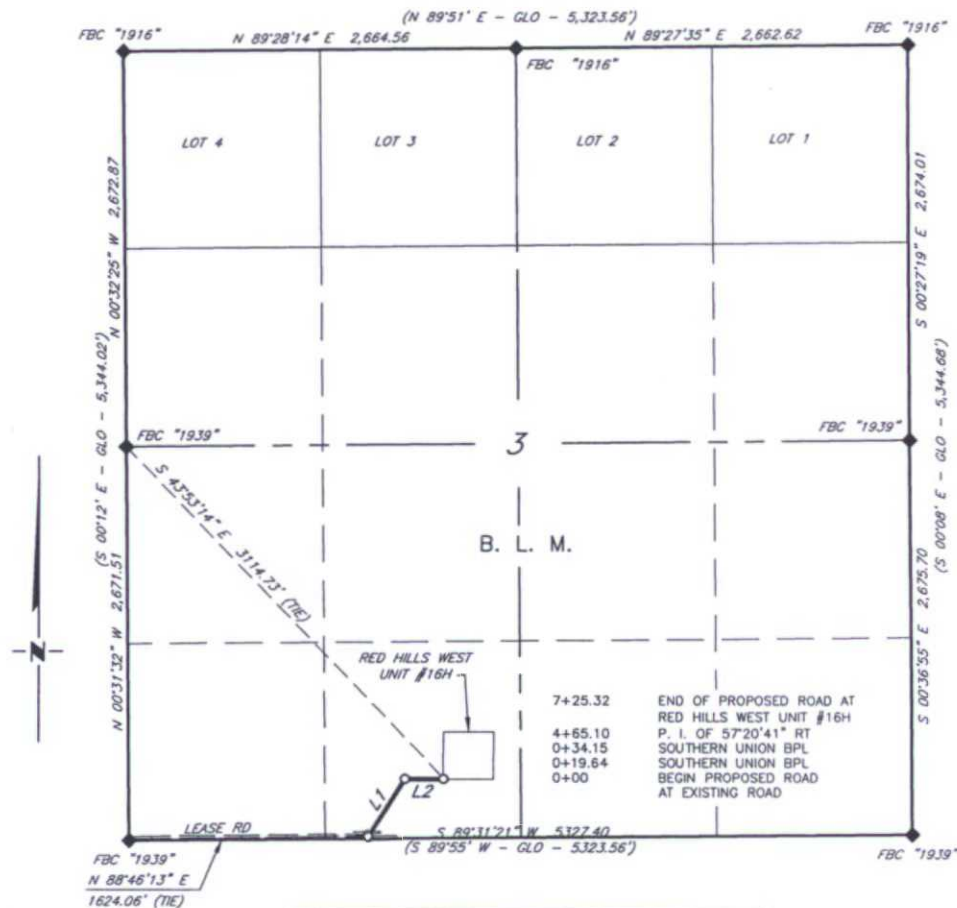
**RRC**

308 W. BROADWAY ST., HOBBS, NM 88240 (575) 964-8200

SCALE: 1" = 100'
DATE: 3-20-15
SURVEYED BY: ML/AA
DRAWN BY: JC
APPROVED BY: RMH
SHEET : 1 OF 3



**MEWBOURNE OIL COMPANY**  
**PROPOSED ROAD EASEMENT FROM AN EXISTING LEASE RD TO**  
**THE RED HILLS WEST UNIT #16H**  
**SECTION 3, T26S, R32E,**  
**N. M. P. M., LEA CO., NEW MEXICO**



LINE TABLE		
LINE	BEARING	LENGTH
L1	N 32°38'18" E	465.10'
L2	N 89°58'59" E	260.22'

SCALE: 1" = 1000'  
0 500 1000  
BEARINGS ARE GRID NAD 27  
NM EAST  
DISTANCES ARE HORIZ. GROUND.

**LEGEND**  
( ) RECORD DATA - GLO  
◆ FOUND MONUMENT AS NOTED  
— PROPOSED ROAD  
— EXISTING BPL

I, R. M. Howett, a N. M. Professional Surveyor, hereby certify that I prepared this plat from an actual survey made on the ground under my direct supervision, said survey and plat meet the Min. Stds. for Land Surveying in the State of N. M. and are true and correct to the best of my knowledge and belief.

*Robert M. Howett*  
Robert M. Howett

Firm No.: TX 10193838 NM 4655451

Robert M. Howett NM PS 19680

Copyright 2014 - All Rights Reserved



NO.	REVISION	DATE
JOB NO.:	LS1503068	
DWG. NO.:	1503068RD1	

**RRC**

308 W. BROADWAY ST., HOBBS, NM 88240 (575) 964-8200

SCALE: 1" = 1000'  
DATE: 3-20-15  
SURVEYED BY: ML/AA  
DRAWN BY: JC  
APPROVED BY: RMH  
SHEET : 2 OF 3

**MEWBOURNE OIL COMPANY**  
**PROPOSED ROAD EASEMENT FROM AN EXISTING LEASE RD TO**  
**THE RED HILLS WEST UNIT #16H**  
**SECTION 3, T26S, R32E,**  
**N. M. P. M., LEA CO., NEW MEXICO**

DESCRIPTION

A strip of land 30 feet wide, being 725.32 feet or 43.959 rods in length, lying in Section 3, Township 26 South, Range 32 East, N. M. P. M., Lea County, New Mexico, being 15 feet left and 15 feet right of the following described survey of a centerline across B. L. M. land:

BEGINNING at Engr. Sta. 0+00, a point in the Southwest quarter of Section 3, which bears N 88°46'13" E, 1,624.06 feet from a brass cap, stamped "1939", found for the Southwest corner of Section 3;

Thence N 32°38'18" E, 465.10 feet, to Engr. Sta. 4+65.10, a P. I. of 57°20'41" right;


Thence N 89°58'59" E, 260.22 feet, to Engr. Sta. 7+25.32, End of Survey, a point on the Southwest corner of the Red Hills West Unit #16H pad, which bears S 43°53'14" E, 3,114.73 feet from a brass cap, stamped "1939", found for the West quarter corner of Section 3.

Said strip of land contains 0.499 acres, more or less and is allocated by forties as follows:

SE 1/4 SW 1/4                      43.959 Rods                      0.499 Acres

Firm No.: TX 10193838 NM 4655451

Copyright 2015 - All Rights Reserved

			SCALE: 1" = 1000'
			DATE: 3-20-15
			SURVEYED BY: ML/AA
			DRAWN BY: JC
NO.	REVISION	DATE	APPROVED BY: RMH
JOB NO.: LS1503068			SHEET : 2 OF 3
DWG. NO.: 1503068RD2			

308 W. BROADWAY ST., HOBBS, NM 88240 (575) 964-8200



GATES E & S NORTH AMERICA, INC.  
134 44TH STREET  
CORPUS CHRISTI, TEXAS 78405

PHONE: 361-887-9807  
FAX: 361-887-0812  
EMAIL: [Tim.Cantu@gates.com](mailto:Tim.Cantu@gates.com)  
WEB: [www.gates.com](http://www.gates.com)

### 10K CEMENTING ASSEMBLY PRESSURE TEST CERTIFICATE

Customer :	AUSTIN DISTRIBUTING	Test Date:	4/30/2015
Customer Ref. :	4060578	Hose Serial No.:	D-043015-7
Invoice No. :	500506	Created By:	JUSTIN CROPPER
Product Description:	10K3.548.0CK4.1/1610KFLGE/E LE		
End Fitting 1 :	4 1/16 10K FLG	End Fitting 2 :	4 1/16 10K FLG
Gates Part No. :	4773-6290	Assembly Code :	L36554102914D-043015-7
Working Pressure :	10,000 PSI	Test Pressure :	15,000 PSI

Gates E & S North America, Inc. certifies that the following hose assembly has been tested to the Gates Oilfield Roughneck Agreement/Specification requirements and passed the 15 minute hydrostatic test per API Spec 7K/Q1, Fifth Edition, June 2010, Test pressure 9.6.7 and per Table 9 to 15,000 psi in accordance with this product number. Hose burst pressure 9.6.7.2 exceeds the minimum of 2.5 times the working pressure per Table 9.

Quality Manager :  
Date :  
Signature :

QUALITY
4/30/2015
<i>Justin Cropper</i>

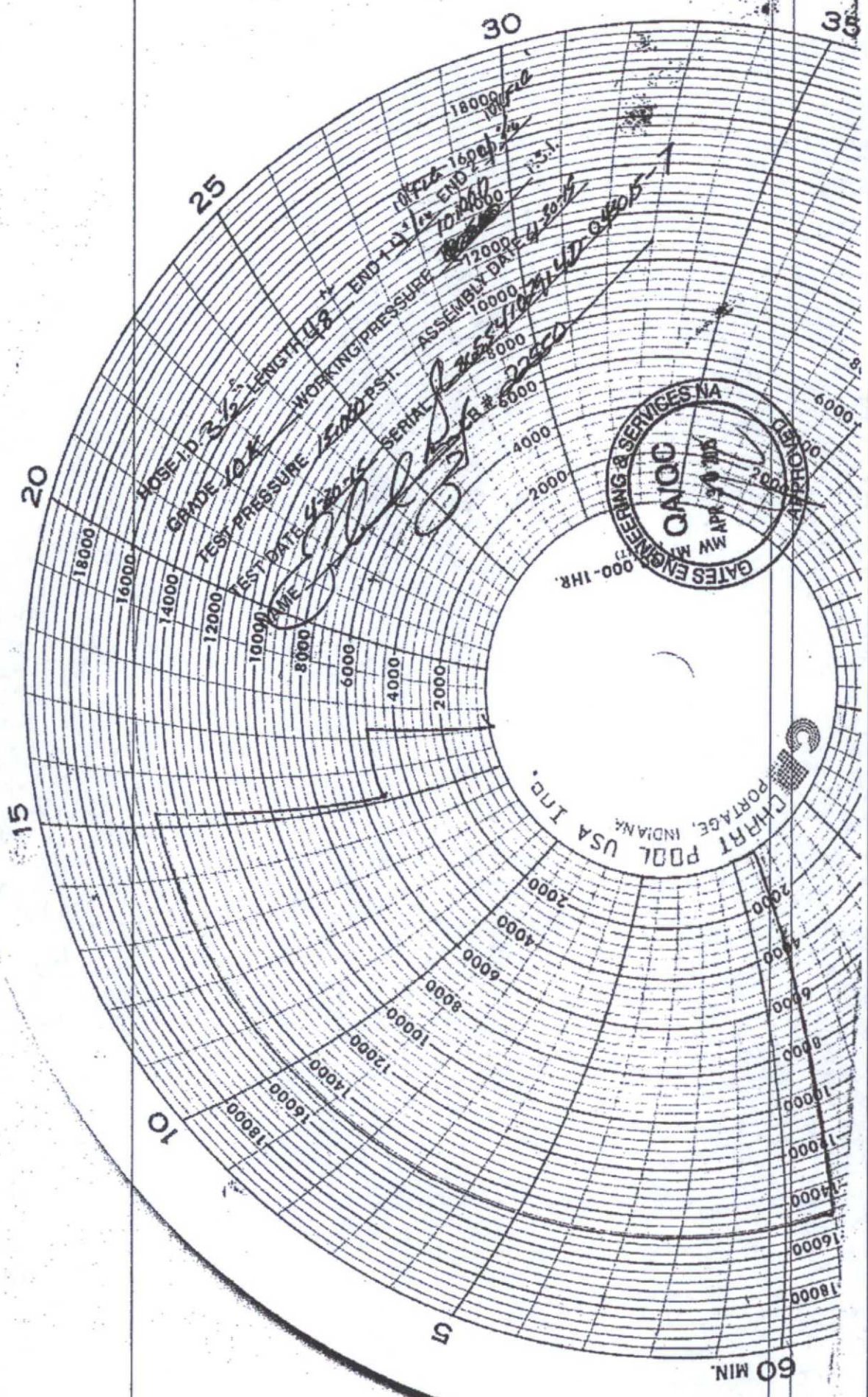
Production:  
Date :  
Signature :

PRODUCTION
4/30/2015
<i>Justin Cropper</i>

Form PTC - 01 Rev.02







HOSE ID. 3 1/2 LENGTH 48 END 1 END 2  
GRADE 10K WORKING PRESSURE 1500 PSI  
TEST PRESSURE 2250 PSI  
TEST DATE 4-20-15 ASSEMBLY DATE 4-20-15  
NAME [Signature] SERIAL 2250  
R# 6000



CHART POOL USA INC.  
PORTAGE, INDIANA