

District I
1625 N. French Dr., Hobbs, NM 88240
Phone: (575) 393-6161 Fax: (575) 393-0720
District II
811 S. First St., Artesia, NM 88210
Phone: (575) 748-1283 Fax: (575) 748-9720
District III
1000 Rio Brazos Road, Aztec, NM 87410
Phone: (505) 334-6178 Fax: (505) 334-6170
District IV
1220 S. St. Francis Dr., Santa Fe, NM 87505
Phone: (505) 476-3460 Fax: (505) 476-3462

State of New Mexico
Energy, Minerals & Natural Resources Department
OIL CONSERVATION DIVISION
1220 South St. Francis Dr.
Santa Fe, NM 87505

Form C-102
Revised August 1, 2011
Submit one copy to appropriate
District Office

HOBBS OGD

OCT 30 2015

☐ AMENDED REPORT

RECEIVED

WELL LOCATION AND ACREAGE DEDICATION PLAT

¹ API Number 30-025-42911	² Pool Code 97903	³ Pool Name WC-025 G-08 52532356; LWR BS
⁴ Property Code 315630	⁵ Property Name RED HILLS WEST 22 B2DM FED COM	
⁷ GRID NO. 14744	⁸ Operator Name MEWBOURNE OIL COMPANY	⁶ Well Number 3H
		⁹ Elevation 3145'

¹⁰ Surface Location

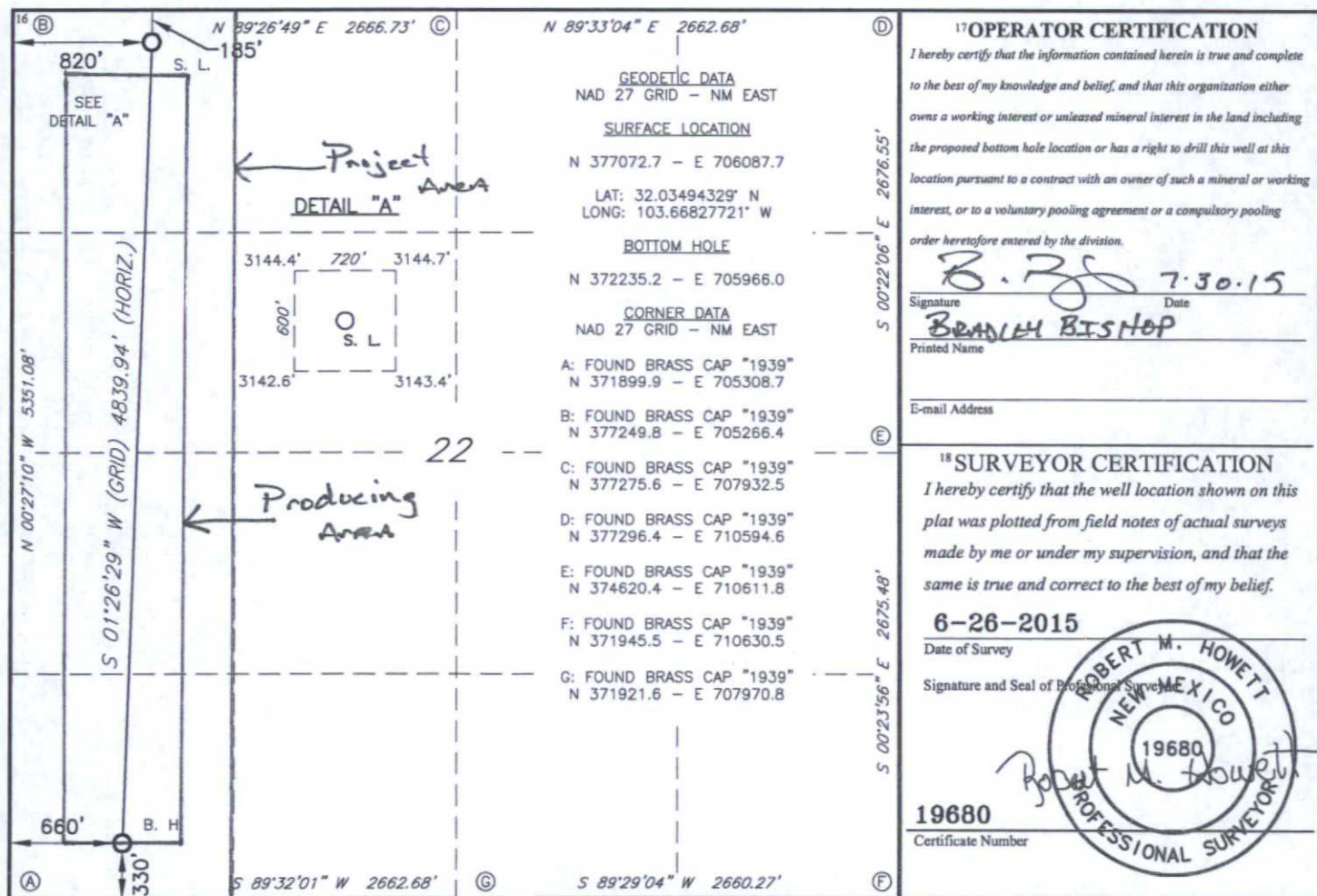
UL or lot no.	Section	Township	Range	Lot Idn	Feet from the	North/South line	Feet From the	East/West line	County
D	22	26S	32E		185	NORTH	820	WEST	LEA

¹¹ Bottom Hole Location If Different From Surface

UL or lot no.	Section	Township	Range	Lot Idn	Feet from the	North/South line	Feet from the	East/West line	County
M	22	26S	32E		330	SOUTH	660	WEST	LEA

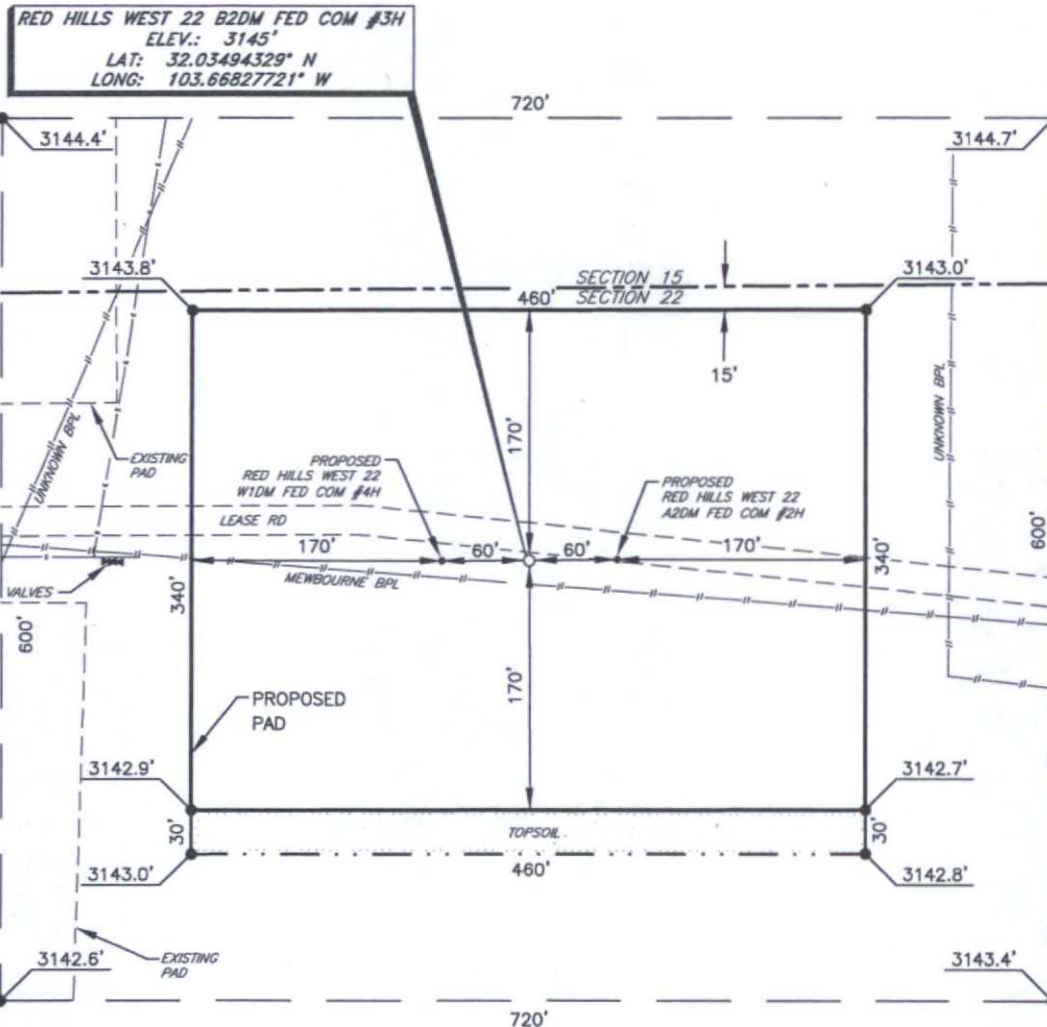
¹² Dedicated Acres 160	¹³ Joint or Infill	¹⁴ Consolidation Code	¹⁵ Order No.
---	-------------------------------	----------------------------------	-------------------------

No allowable will be assigned to this completion until all interest have been consolidated or a non-standard unit has been approved by the division.



MEWBOURNE OIL COMPANY

RED HILLS WEST 22 B2DM FED COM #3H
(185' FNL & 820' FWL)
SECTION 22, T26S, R32E
N. M. P. M., LEA COUNTY, NEW MEXICO



DIRECTIONS TO LOCATION

From the intersection of CR-1 (Orla Hwy.) and CR-2 (Battle Ave Rd.)
Go Northeast on CR-1 approx. 1.0 miles to a lease road on the right;
Turn right and go Southeast approx. 0.1 miles to a "Y";
Turn left and go East approx. 1.4 miles.
Location is on the right.

SCALE: 1" = 100'

BEARINGS ARE
NAD 27 GRID - NM EAST
DISTANCES ARE GROUND

Firm No.: TX 10193838 NM 4655451

Copyright 2014 - All Rights Reserved

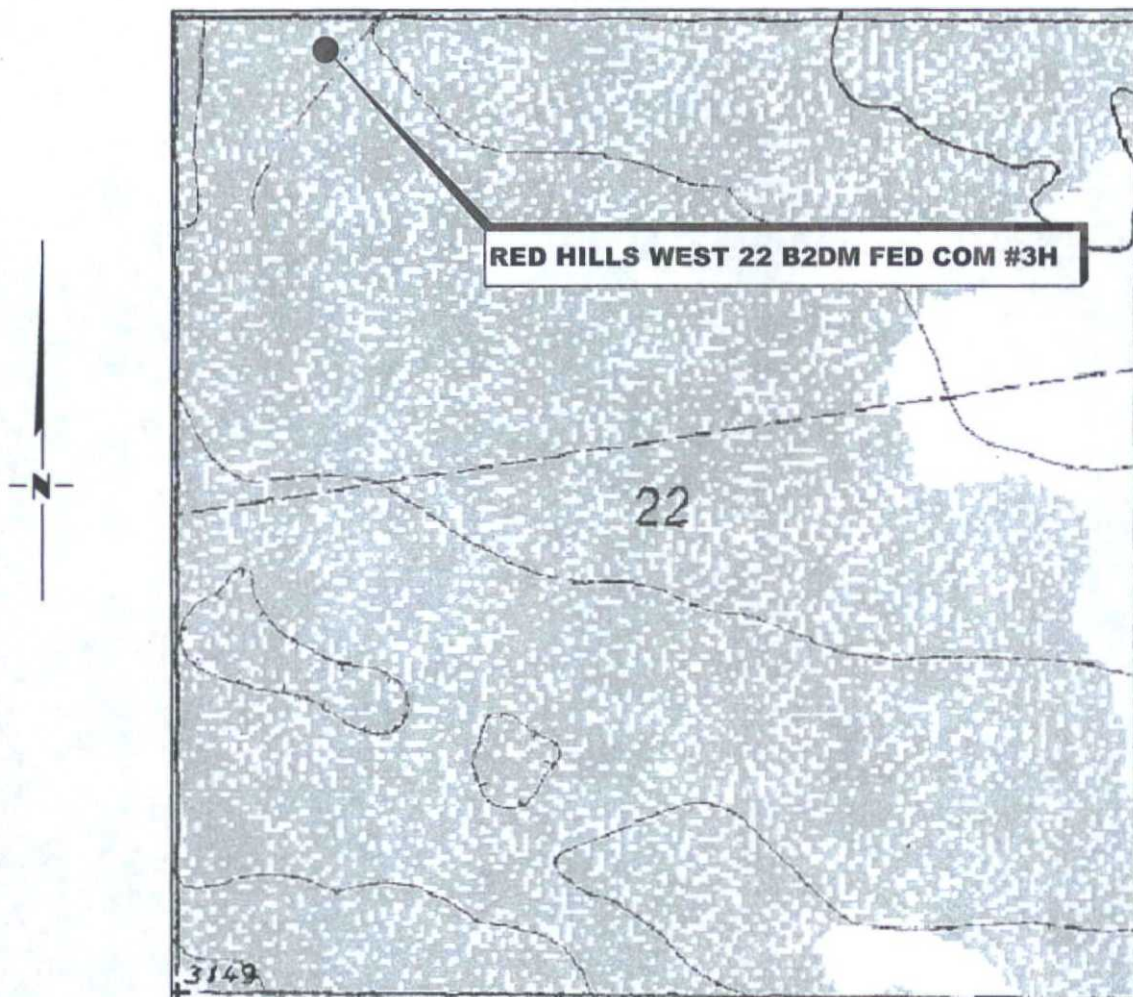
NO.	REVISION	DATE
JOB NO.:	LS1506300	
DWG. NO.:	1506300PAD	

RRC

308 W. BROADWAY ST., HOBBS, NM 88240 (575) 964-8200

SCALE: 1" = 100'
DATE: 6-24-2015
SURVEYED BY: BC/ER
DRAWN BY: CMJ
APPROVED BY: RMH
SHEET : 1 OF 1

LOCATION VERIFICATION MAP



*SECTION 22, TWP. 26 SOUTH, RGE. 32 EAST,
N. M. P. M., LEA CO., NEW MEXICO*

OPERATOR: Mewbourne Oil Company
LEASE: Red Hills West 22 B2DM Fed Com
WELL NO.: 3H
ELEVATION: 3145'

LOCATION: 185' FNL & 820' FWL
CONTOUR INTERVAL: 10'
USGS TOPO. SOURCE MAP:
Paduca Breaks West, NM (1973)

Firm No.: TX 10193838 NM 4655451

Copyright 2015 - All Rights Reserved

NO.	REVISION	DATE
JOB NO.:	LS1506300	
DWG. NO.:	1506300LVM	

RRC

308 W. BROADWAY ST., HOBBS, NM 88240 (575) 964-8200

SCALE: 1000'
DATE: 6-26-2015
SURVEYED BY: BC/ER
DRAWN BY: CMJ
APPROVED BY: RMH
SHEET : 1 OF 1

VICINITY MAP

NOT TO SCALE



RED HILLS WEST 22 B2DM FED COM #3H

*SECTION 22, TWP. 26 SOUTH, RGE. 32 EAST,
N. M. P. M., LEA CO., NEW MEXICO*

OPERATOR: Mewbourne Oil Company
LEASE: Red Hills West 22 B2DM Fed Com
WELL NO.: 3H

LOCATION: 185' FNL & 820' FWL
ELEVATION: 3145'

Firm No.: TX 10193838 NM 4655451

Copyright 2014 - All Rights Reserved

NO.	REVISION	DATE
JOB NO.: LS1506300		
DWG. NO.: 1506300VM		

RRC

308 W. BROADWAY ST., HOBBS, NM 88240 (575) 964-8200

SCALE: NTS
DATE: 6-26-2015
SURVEYED BY: BC/ER
DRAWN BY: CMJ
APPROVED BY: RMH
SHEET : 1 OF 1

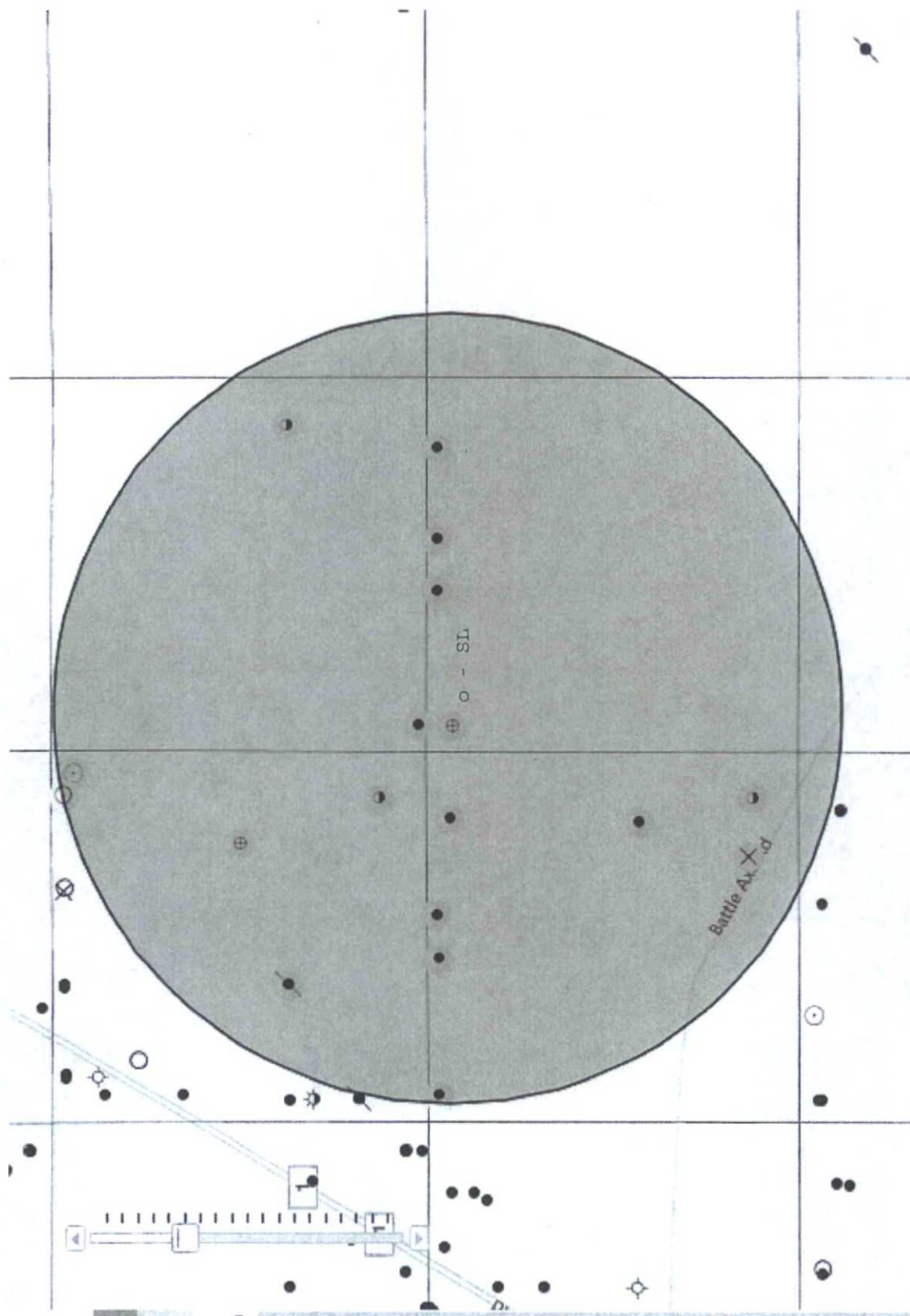


Exhibit "4" - SL - Red Hills West 22 B2DM Fed Com #3H

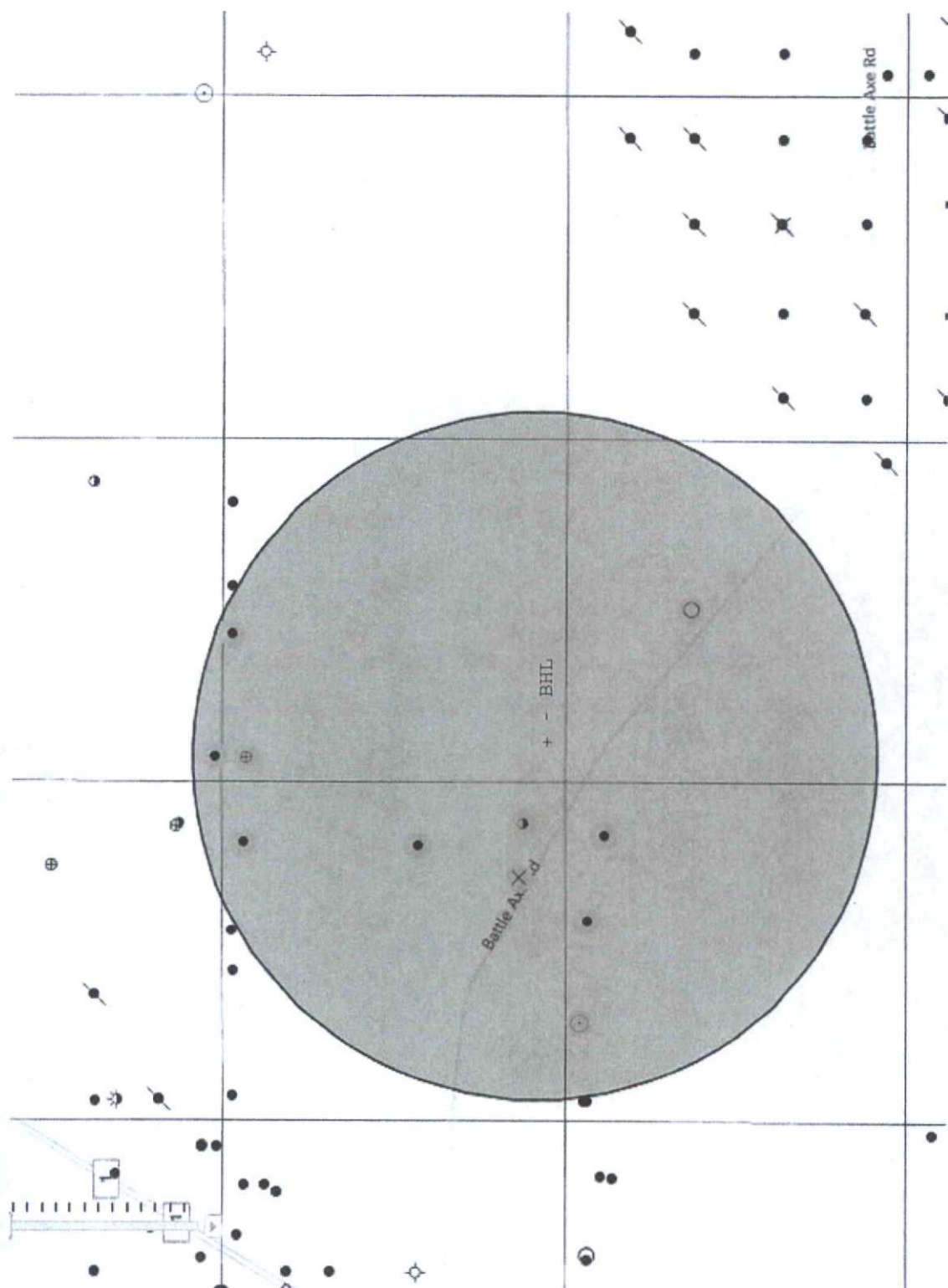
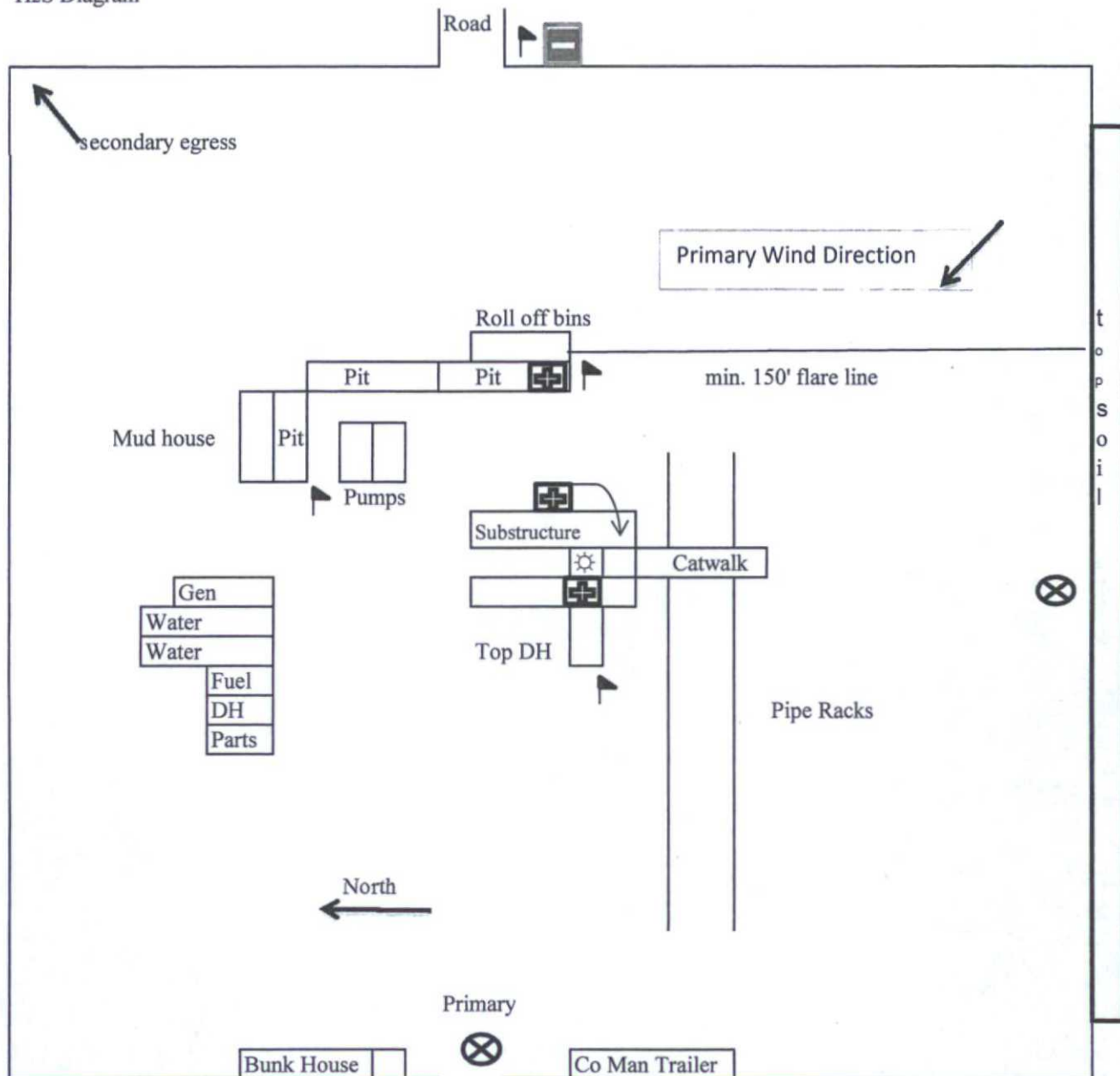


Exhibit "4A" - BHL - Red Hills West 22 B2DM Fed Com #3H

H2S Diagram



Mewbourne Oil Company
 Red Hills West 22 B2DM Fed Com #3H
 185' FNL & 820' FWL
 Sec. 22 T26S R32E
 Eddy County, NM

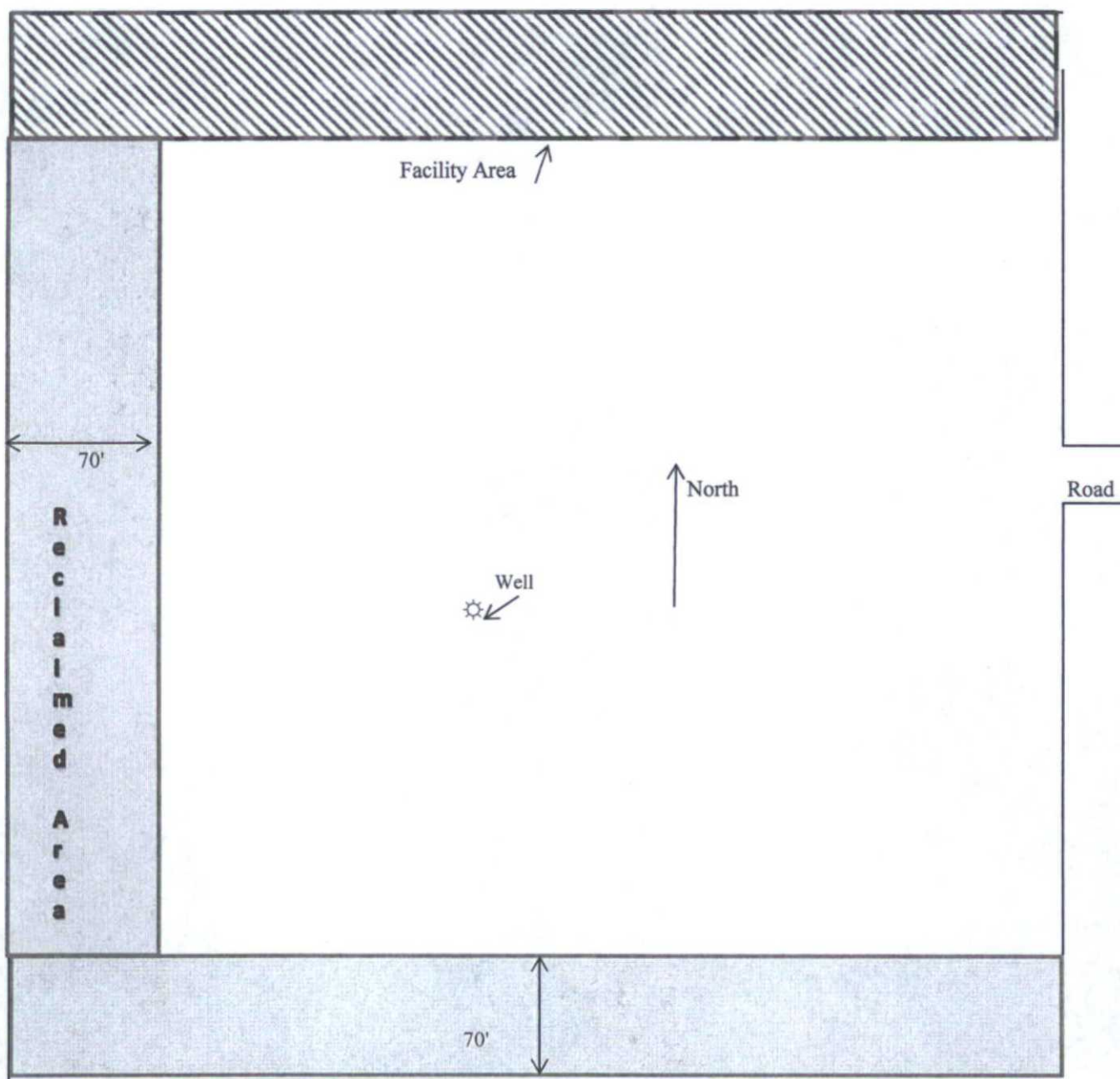
= Warning Signs

= Wind Markers

= H2S Monitors

= Safety Stations

Interim Reclamation Diagram



Mewbourne Oil Company
Red Hills West 22 B2DM Fed Com #3H
185' FNL & 820' FWL
Sec 22 T26S R32E
Lea County, NM

Form NM 8140-9
(March 2008)
United States Department of the Interior
Bureau of Land Management
New Mexico State Office

Permian Basin Cultural Resource Mitigation Fund

The company shown below has agreed to contribute funding to the Permian Basin Cultural Resource Fund in lieu of being required to conduct a Class III survey for cultural resources associated with their project. This form verifies that the company has elected to have the Bureau of Land Management (BLM) follow the procedures specified within the Memorandum of Agreement (MOA) concerning improved strategies for managing historic properties within the Permian Basin, New Mexico, for the undertaking rather than the Protocol to meet the agency's Section 106 obligations.

Company Name: Mewbourne Oil Company

Address: PO Box 5270

Hobbs, NM 88241

Project description:

Location & road for Red Hills West 22 B2DM Fed Com #3H

T. 26S, R. 32E, Section 22 NMPM, Lea County, New Mexico

Amount of contribution: \$ 1,599.00

Provisions of the MOA:

- A. No new Class III inventories are required of industry within the Project Area for those projects where industry elects to contribute to the mitigation fund.
- B. The amount of funds contributed was derived from the rate schedule established within Appendix B of the MOA. The amount of the funding contribution acknowledged on this form reflects those rates.
- C. The BLM will utilize the funding to carry out a program of mitigation at high-priority sites whose study is needed to answer key questions identified within the Regional Research Design.
- D. Donating to the fund is voluntary. Industry acknowledges that it is aware it has the right to pay for Class III survey rather than contributing to the mitigation fund, and that it must avoid or fund data recovery at those sites already recorded that are eligible for nomination to the National Register or whose eligibility is unknown and that any such payments are independent of the mitigation funds established by this MOA.
- E. Previously recorded archeological sites determined eligible for nomination to the National Register or whose eligibility remains undetermined must be avoided or mitigated.
- F. If any skeletal remains that might be human or funerary objects are discovered by any activities, the land-use applicant will cease activities in the area of discovery, protect the remains, and notify the BLM within 24 hours. The BLM will determine the appropriate treatment of the remains in consultation with culturally affiliated Indian Tribe(s) and lineal descendents. Applicants will be required to pay for treatment of the cultural items independent and outside of the mitigation fund.



Company-Authorized Officer

7-30-15

Date

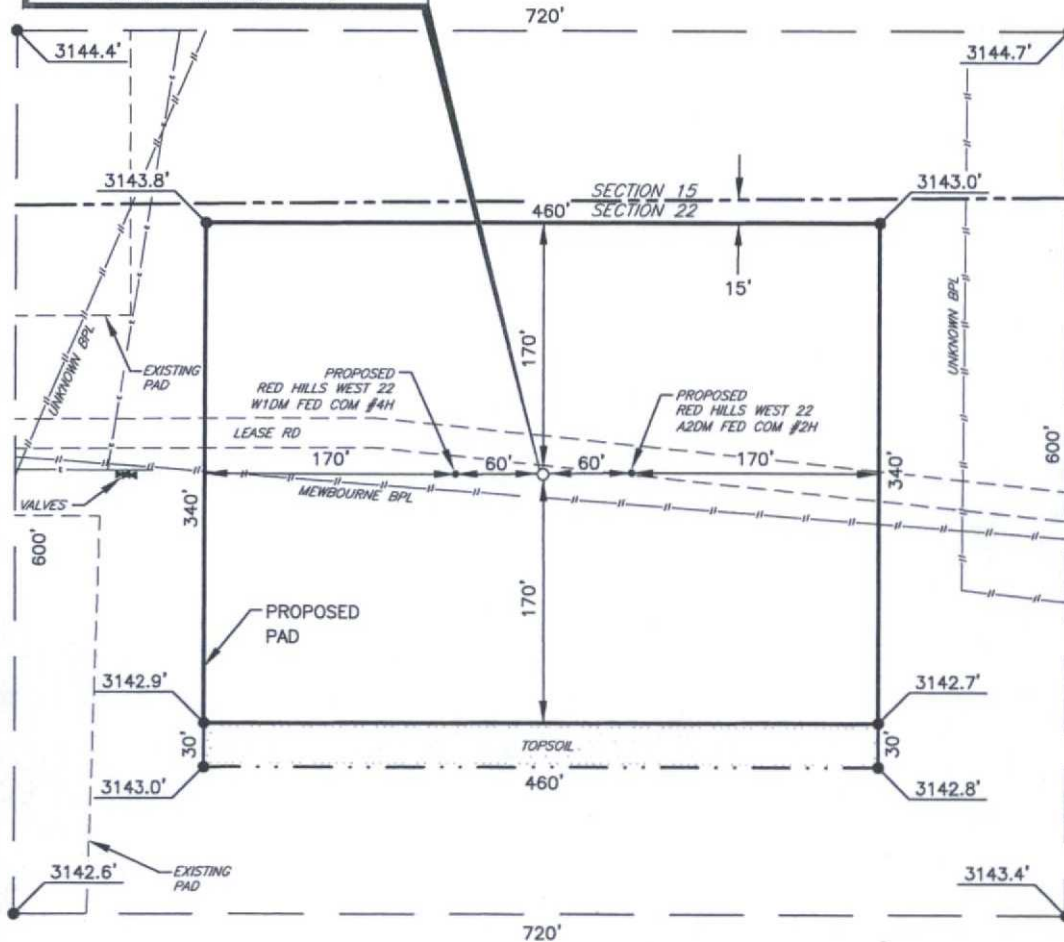
BLM-Authorized Officer

Date

MEWBOURNE OIL COMPANY

RED HILLS WEST 22 B2DM FED COM #3H
(185' FNL & 820' FWL)
SECTION 22, T26S, R32E
N. M. P. M., LEA COUNTY, NEW MEXICO

RED HILLS WEST 22 B2DM FED COM #3H
ELEV.: 3145'
LAT: 32.03494329° N
LONG: 103.66827721° W



DIRECTIONS TO LOCATION

From the intersection of CR-1 (Orla Hwy.) and CR-2 (Battle Axe Rd.)
Go Northeast on CR-1 approx. 1.0 miles to a lease road on the right;
Turn right and go Southeast approx. 0.1 miles to a "Y";
Turn left and go East approx. 1.4 miles.
Location is on the right.

SCALE: 1" = 100'
0 50 100

BEARINGS ARE
NAD 27 GRID - NM EAST
DISTANCES ARE GROUND

Firm No.: TX 10193838 NM 4655451

Copyright 2014 - All Rights Reserved

NO.	REVISION	DATE
JOB NO.:	LS1506300	
DWG. NO.:	1506300PAD	

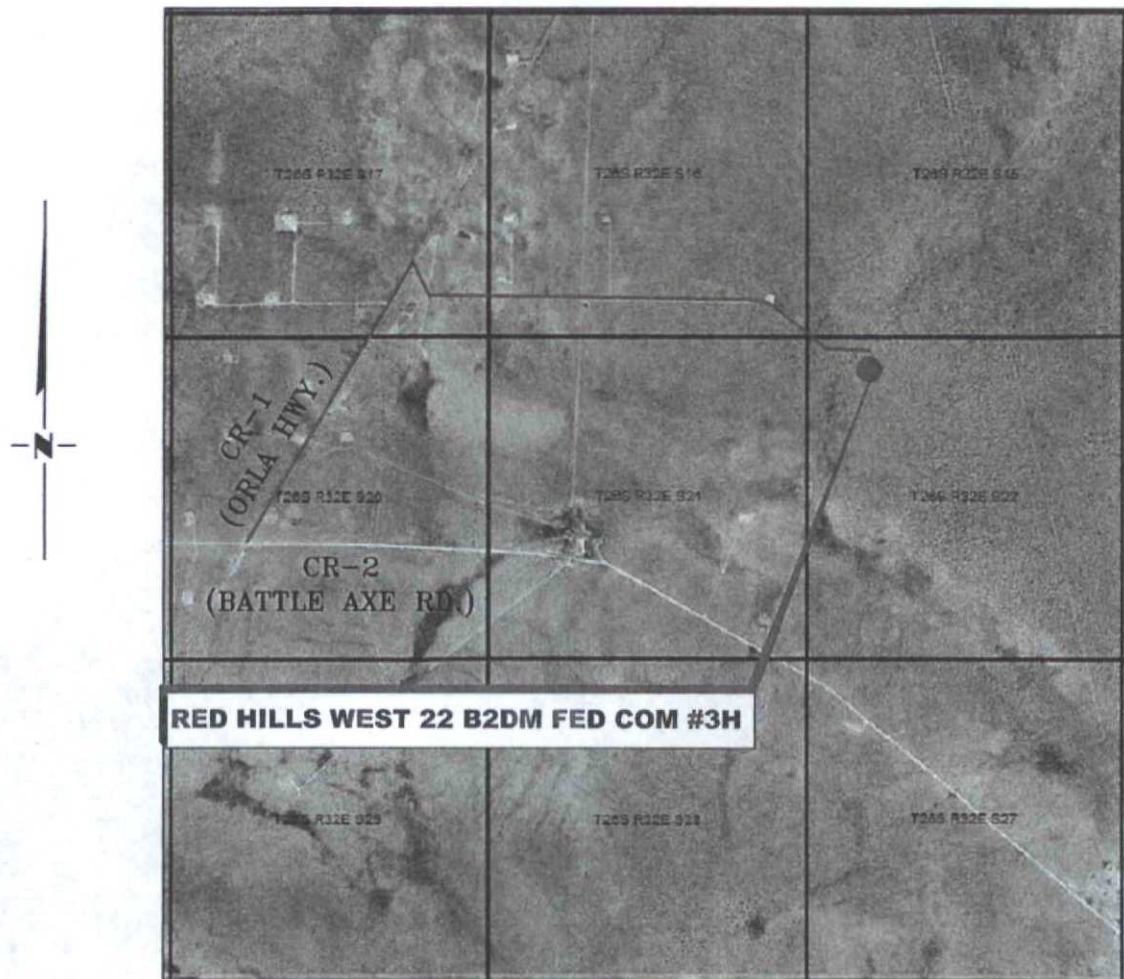
RRC

308 W. BROADWAY ST., HOBBS, NM 88240 (575) 964-8200

SCALE: 1" = 100'
DATE: 6-24-2015
SURVEYED BY: BC/ER
DRAWN BY: CMJ
APPROVED BY: RMH
SHEET : 1 OF 1

VICINITY MAP

NOT TO SCALE



*SECTION 22, TWP. 26 SOUTH, RGE. 32 EAST,
N. M. P. M., LEA CO., NEW MEXICO*

OPERATOR: Mewbourne Oil Company
LEASE: Red Hills West 22 B2DM Fed Com
WELL NO.: 3H

LOCATION: 185' FNL & 820' FWL
ELEVATION: 3145'

Firm No.: TX 10193838 NM 4655451

Copyright 2014 - All Rights Reserved

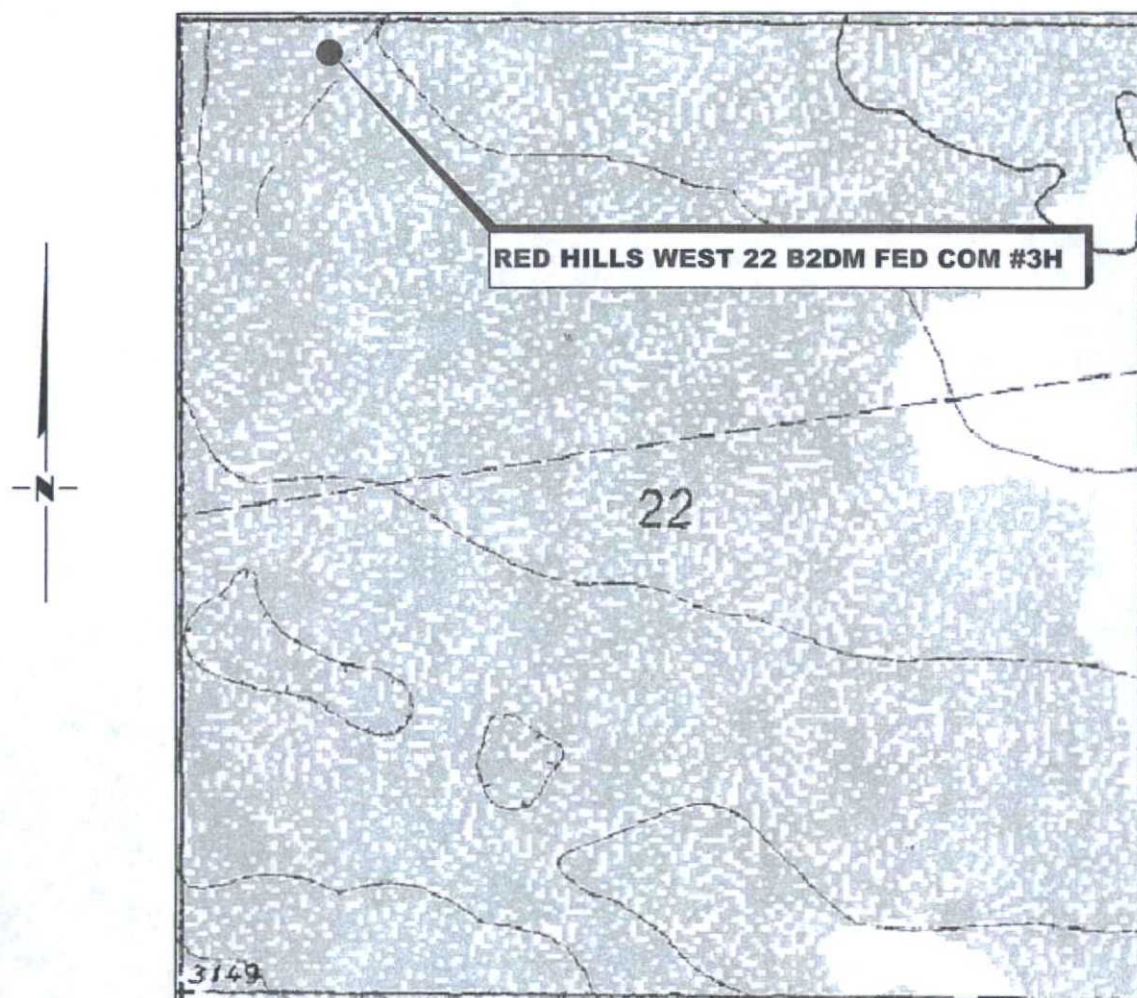
NO.	REVISION	DATE
JOB NO.: LS1506300		
DWG. NO.: 1506300VM		

RRC

308 W. BROADWAY ST., HOBBS, NM 88240 (575) 964-8200

SCALE: NTS
DATE: 6-26-2015
SURVEYED BY: BC/ER
DRAWN BY: CMJ
APPROVED BY: RMH
SHEET : 1 OF 1

LOCATION VERIFICATION MAP



*SECTION 22, TWP. 26 SOUTH, RGE. 32 EAST,
N. M. P. M., LEA CO., NEW MEXICO*

OPERATOR: Mewbourne Oil Company
LEASE: Red Hills West 22 B2DM Fed Com
WELL NO.: 3H
ELEVATION: 3145'

LOCATION: 185' FNL & 820' FWL
CONTOUR INTERVAL: 10'
USGS TOPO. SOURCE MAP:
Paduca Breaks West, NM (1973)

Firm No.: TX 10193838 NM 4655451

Copyright 2015 - All Rights Reserved

NO.	REVISION	DATE
JOB NO.: LS1506300		
DWG. NO.: 1506300LVM		

RRC

308 W. BROADWAY ST., HOBBS, NM 88240 (575) 964-8200

SCALE: 1000'
DATE: 6-26-2015
SURVEYED BY: BC/ER
DRAWN BY: CMJ
APPROVED BY: RMH
SHEET : 1 OF 1



GATES E & S NORTH AMERICA, INC.
134 44TH STREET
CORPUS CHRISTI, TEXAS 78405

PHONE: 361-887-9807
FAX: 361-887-0812
EMAIL: Tim.Cantu@gates.com
WEB: www.gates.com

10K CEMENTING ASSEMBLY PRESSURE TEST CERTIFICATE

Customer :	AUSTIN DISTRIBUTING	Test Date:	4/30/2015
Customer Ref. :	4060578	Hose Serial No.:	D-043015-7
Invoice No. :	500506	Created By:	JUSTIN CROPPER
Product Description:	10K3.548.0CK4.1/1610KFLGE/E LE		
End Fitting 1 :	4 1/16 10K FLG	End Fitting 2 :	4 1/16 10K FLG
Gates Part No. :	4773-6290	Assembly Code :	L36554102914D-043015-7
Working Pressure :	10,000 PSI	Test Pressure :	15,000 PSI

Gates E & S North America, Inc. certifies that the following hose assembly has been tested to the Gates Oilfield Roughneck Agreement/Specification requirements and passed the 15 minute hydrostatic test per API Spec 7K/Q1, Fifth Edition, June 2010, Test pressure 9.6.7 and per Table 9 to 15,000 psi in accordance with this product number. Hose burst pressure 9.6.7.2 exceeds the minimum of 2.5 times the working pressure per Table 9.

Quality Manager :	QUALITY	Production:	PRODUCTION
Date :	4/30/2015	Date :	4/30/2015
Signature :		Signature :	

Form PTC - 01 Rev.02



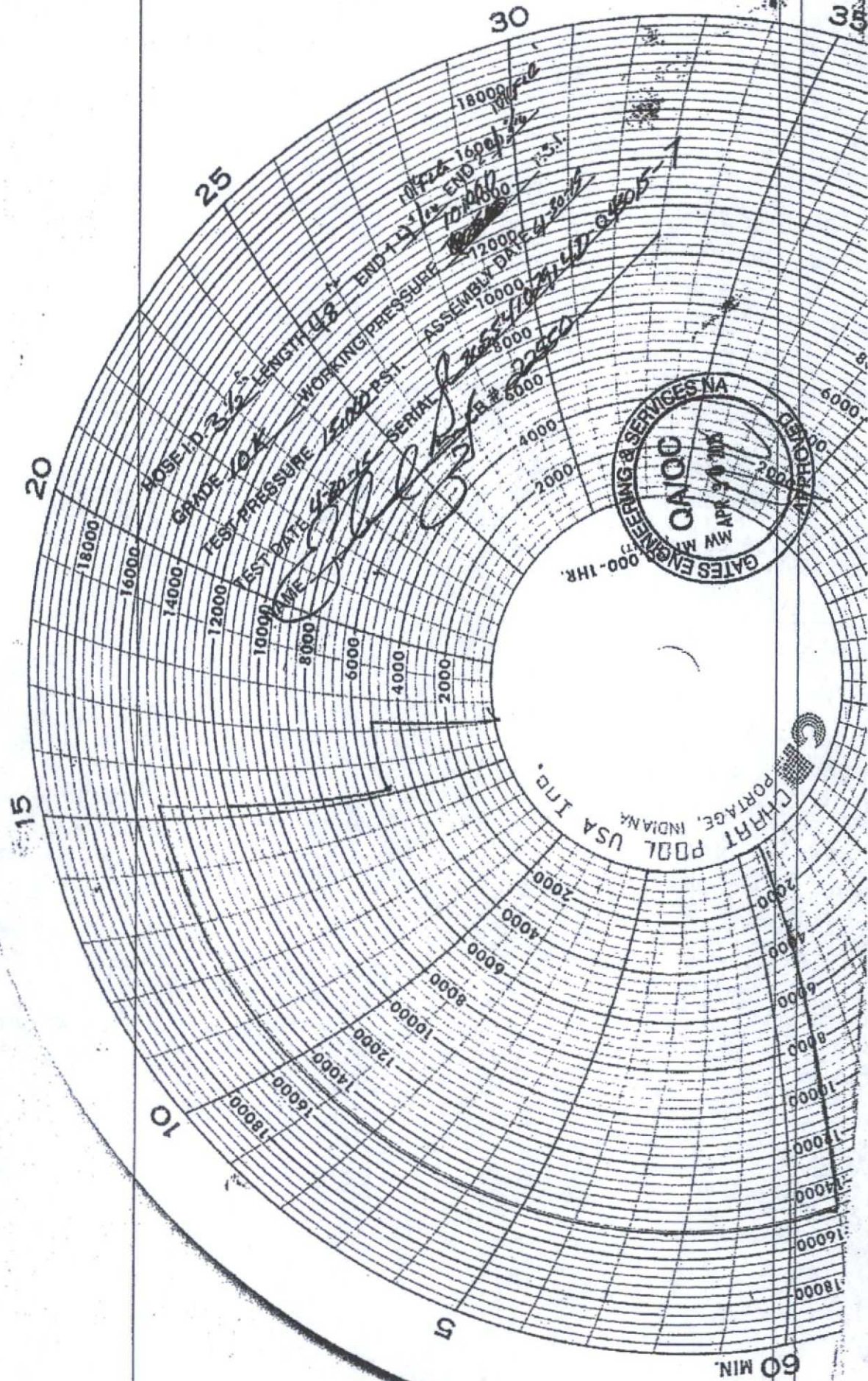


CHART POOL USA INC.
PORTAGE, INDIANA