

District I
1625 N. French Dr., Hobbs, NM 88240
Phone: (575) 393-6161 Fax: (575) 393-0720
District II
811 S. First St., Artesia, NM 88210
Phone: (575) 748-1283 Fax: (575) 748-9720
District III
1000 Rio Brazos Road, Aztec, NM 87410
Phone: (505) 334-6178 Fax: (505) 334-6170
District IV
1220 S. St. Francis Dr., Santa Fe, NM 87505
Phone: (505) 476-3460 Fax: (505) 476-3462

State of New Mexico
Energy, Minerals & Natural Resources Department
OIL CONSERVATION DIVISION
1220 South St. Francis Dr.
Santa Fe, NM 87505

HOBBS OGD
NOV 05 2015
RECEIVED

Form C-102
Revised August 1, 2011
Submit one copy to appropriate
District Office

☐ AMENDED REPORT

WELL LOCATION AND ACREAGE DEDICATION PLAT

¹ API Number 30-025-42929	² Pool Code 97900	³ Pool Name RED HILLS UPPER BONE SPRING SHALE
⁴ Property Code 315642	⁵ Property Name EL MAR 21 AICN FED COM	
⁷ GRID NO. 14744	⁸ Operator Name MEWBOURNE OIL COMPANY	⁶ Well Number 2H
		⁹ Elevation 3275'

¹⁰ Surface Location

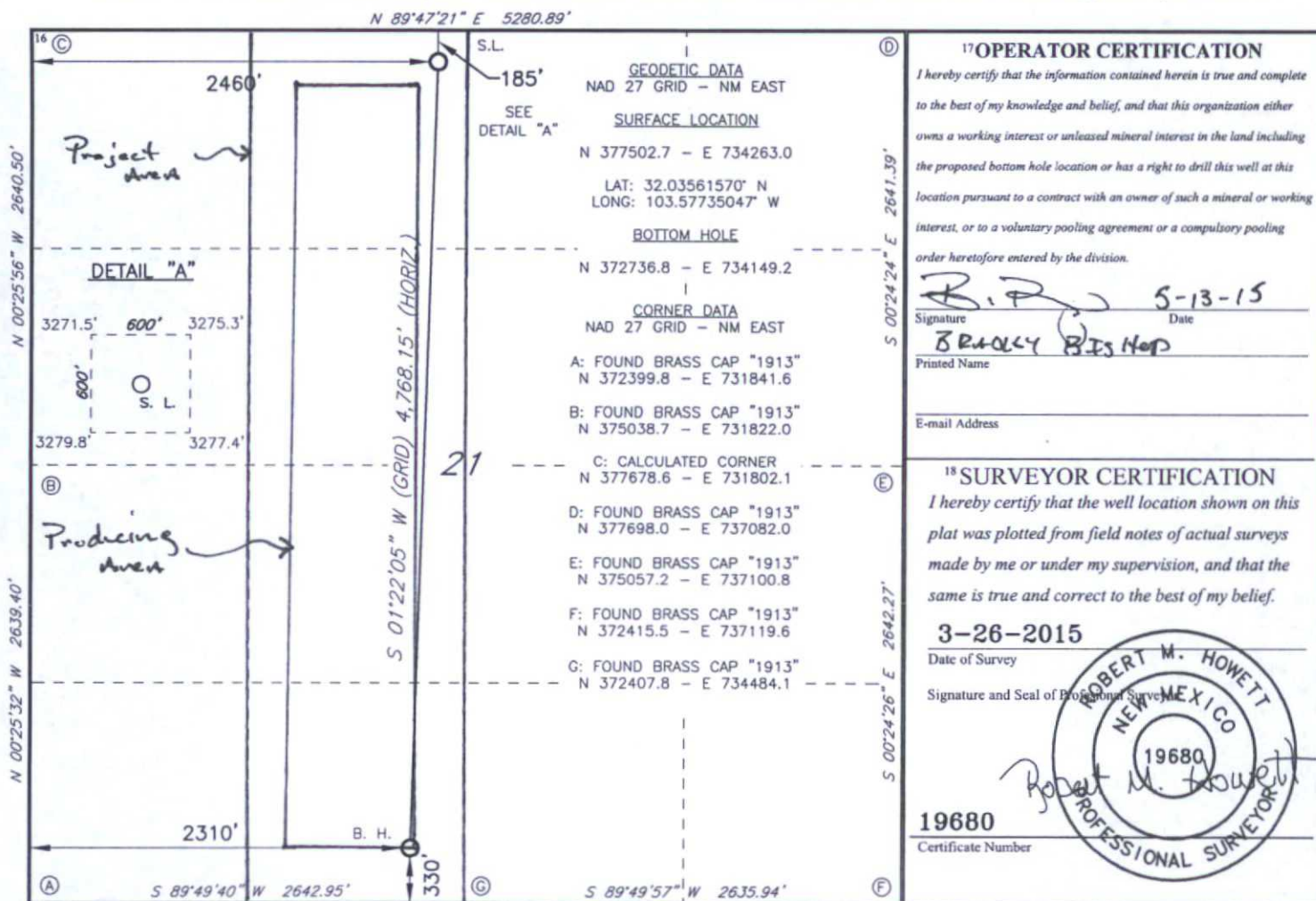
UL or lot no.	Section	Township	Range	Lot Idn	Feet from the	North/South line	Feet From the	East/West line	County
C	21	26S	33E		185	NORTH	2460	WEST	LEA

¹¹ Bottom Hole Location If Different From Surface

UL or lot no.	Section	Township	Range	Lot Idn	Feet from the	North/South line	Feet from the	East/West line	County
N	21	26S	33E		330	SOUTH	2310	WEST	LEA

¹² Dedicated Acres 160	¹³ Joint or Infill	¹⁴ Consolidation Code	¹⁵ Order No.
---	-------------------------------	----------------------------------	-------------------------

No allowable will be assigned to this completion until all interest have been consolidated or a non-standard unit has been approved by the division.



¹⁷ OPERATOR CERTIFICATION

I hereby certify that the information contained herein is true and complete to the best of my knowledge and belief, and that this organization either owns a working interest or unleased mineral interest in the land including the proposed bottom hole location or has a right to drill this well at this location pursuant to a contract with an owner of such a mineral or working interest, or to a voluntary pooling agreement or a compulsory pooling order heretofore entered by the division.

Signature: **R. P. [Signature]** Date: **5-13-15**
Printed Name: **BRADLEY B. [Signature]**
E-mail Address:

¹⁸ SURVEYOR CERTIFICATION

I hereby certify that the well location shown on this plat was plotted from field notes of actual surveys made by me or under my supervision, and that the same is true and correct to the best of my belief.

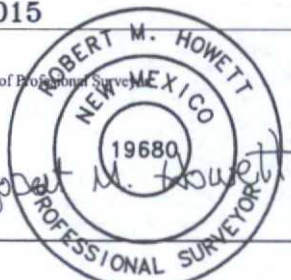
3-26-2015

Date of Survey

Signature and Seal of Professional Surveyor

19680

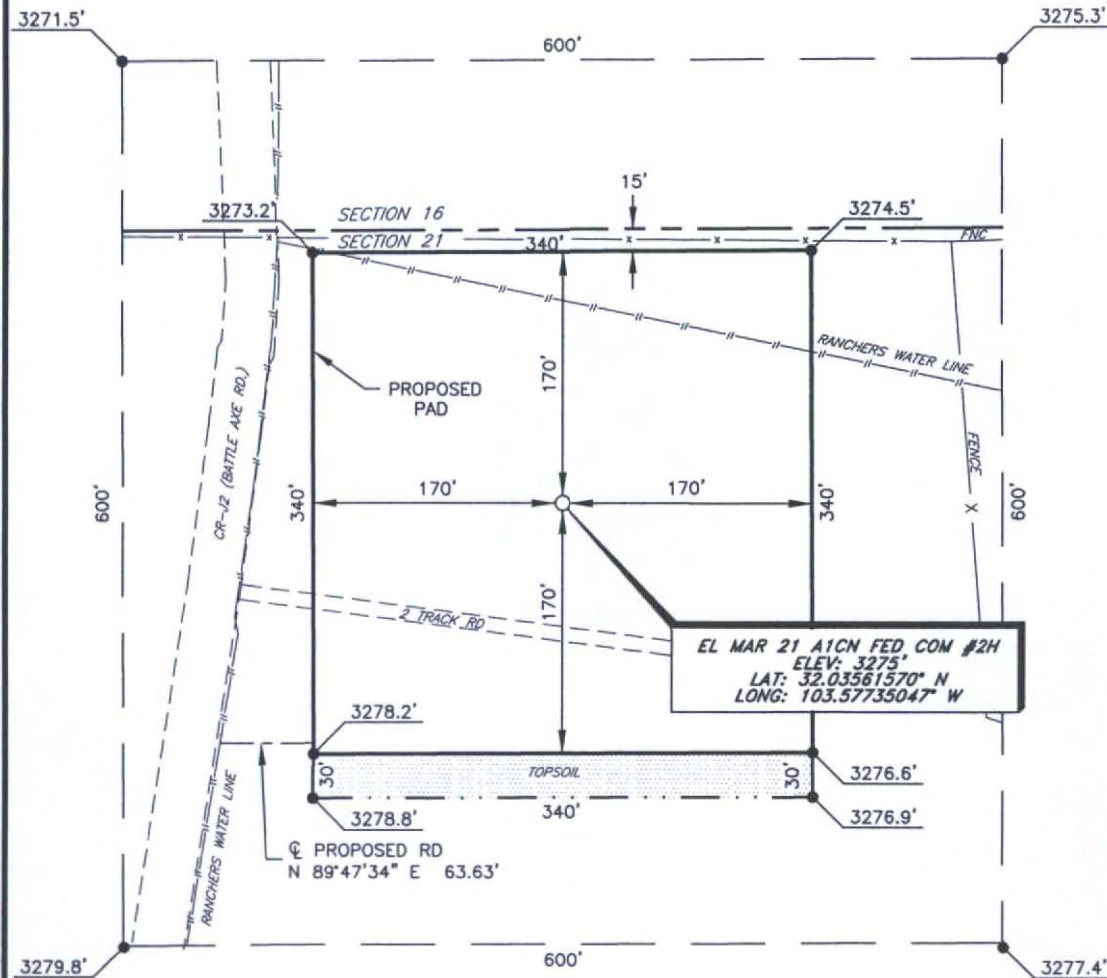
Certificate Number



RRC - Firm No.: TX 10193838 NM 4655451 - Job No.: LS1503065

NOV 09 2015

MEWBOURNE OIL COMPANY
EL MAR 21 A1CN FED COM #2H
(185' FNL & 2460' FWL)
SECTION 21, T26S, R33E
N. M. P. M., LEA CO., NEW MEXICO



DIRECTIONS TO LOCATION

From the intersection of CR-1 (Orla Road) and CR-2 (Battle Axe Road);
Go East turning North on CR-2 approx. 9.0 miles to proposed road on the right;
Turn right and go East approx. 64 feet to proposed pad well on left.

SCALE: 1" = 100'

0 50 100

BEARINGS ARE
NAD 27 GRID - NM EAST
DISTANCES ARE
GROUND.

Firm No.: TX 10193838 NM 4655451

Copyright 2015 - All Rights Reserved

NO.	REVISION	DATE
JOB NO.:	LS1503065	
DWG. NO.:	1503065PAD	

RRC

308 W. BROADWAY ST., HOBBS, NM 88240 (575) 964-8200

SCALE: 1" = 100'

DATE: 3-26-15

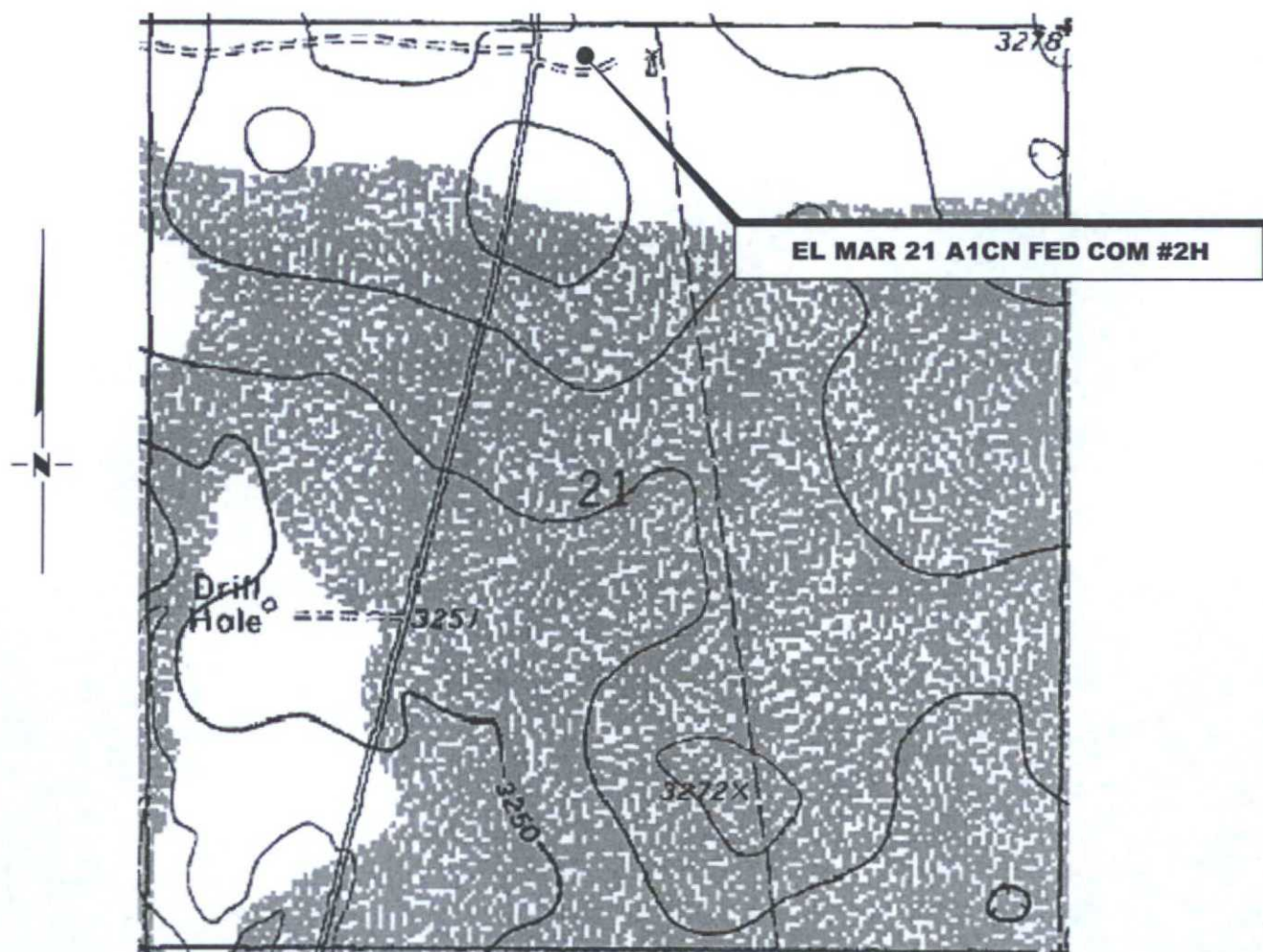
SURVEYED BY: BK/ER

DRAWN BY: LNY

APPROVED BY: RMH

SHEET : 1 OF 1

LOCATION VERIFICATION MAP



SECTION 21, TWP. 26 SOUTH, RGE. 33 EAST,
N. M. P. M., LEA CO., NEW MEXICO

OPERATOR: Mewbourne Oil Company
LEASE: El Mar A1CN Fed Com
WELL NO.: 2H
ELEVATION: 3275'

LOCATION: 185' FNL & 2460' FWL
CONTOUR INTERVAL: 10'
USGS TOPO. SOURCE MAP:
Peduca Breaks East, NM (1973)

Firm No.: TX 10193838 NM 4655451

Copyright 2015 - All Rights Reserved

NO.	REVISION	DATE
JOB NO.:	LS1503065	
DWG. NO.:	1503065LVM	

RRC

308 W. BROADWAY ST., HOBBS, NM 88240 (575) 964-8200

SCALE: 1"=1000'
DATE: 3-26-15
SURVEYED BY: BK/ER
DRAWN BY: LNY
APPROVED BY: RMH
SHEET : 1 OF 1

VICINITY MAP

NOT TO SCALE

EL MAR 21 A1CN FED COM #2H



SECTION 21, TWP. 26 SOUTH, RGE. 33 EAST,
N. M. P. M., LEA CO., NEW MEXICO

OPERATOR: Mewbourne Oil Company
LEASE: El Mar A1CN Fed Com
WELL NO.: 2H

LOCATION: 185' FNL & 2460' FWL
ELEVATION: 3275'

Firm No.: TX 10193838 NM 4655451

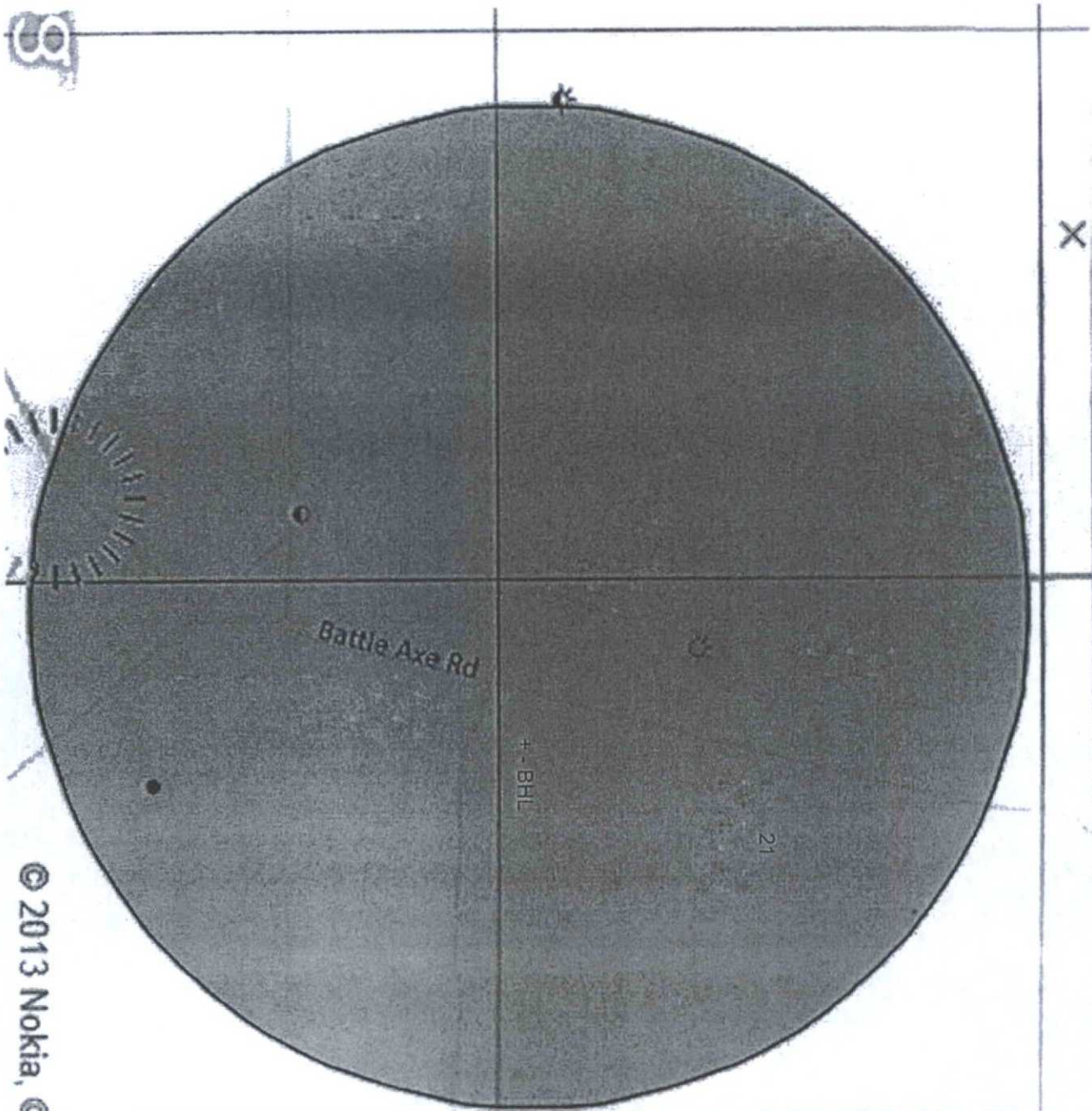
Copyright 2015 - All Rights Reserved

NO.	REVISION	DATE
JOB NO.: LS1503065		
DWG. NO.: 1503065VM		

RRC

308 W. BROADWAY ST., HOBBS, NM 88240 (575) 964-8200

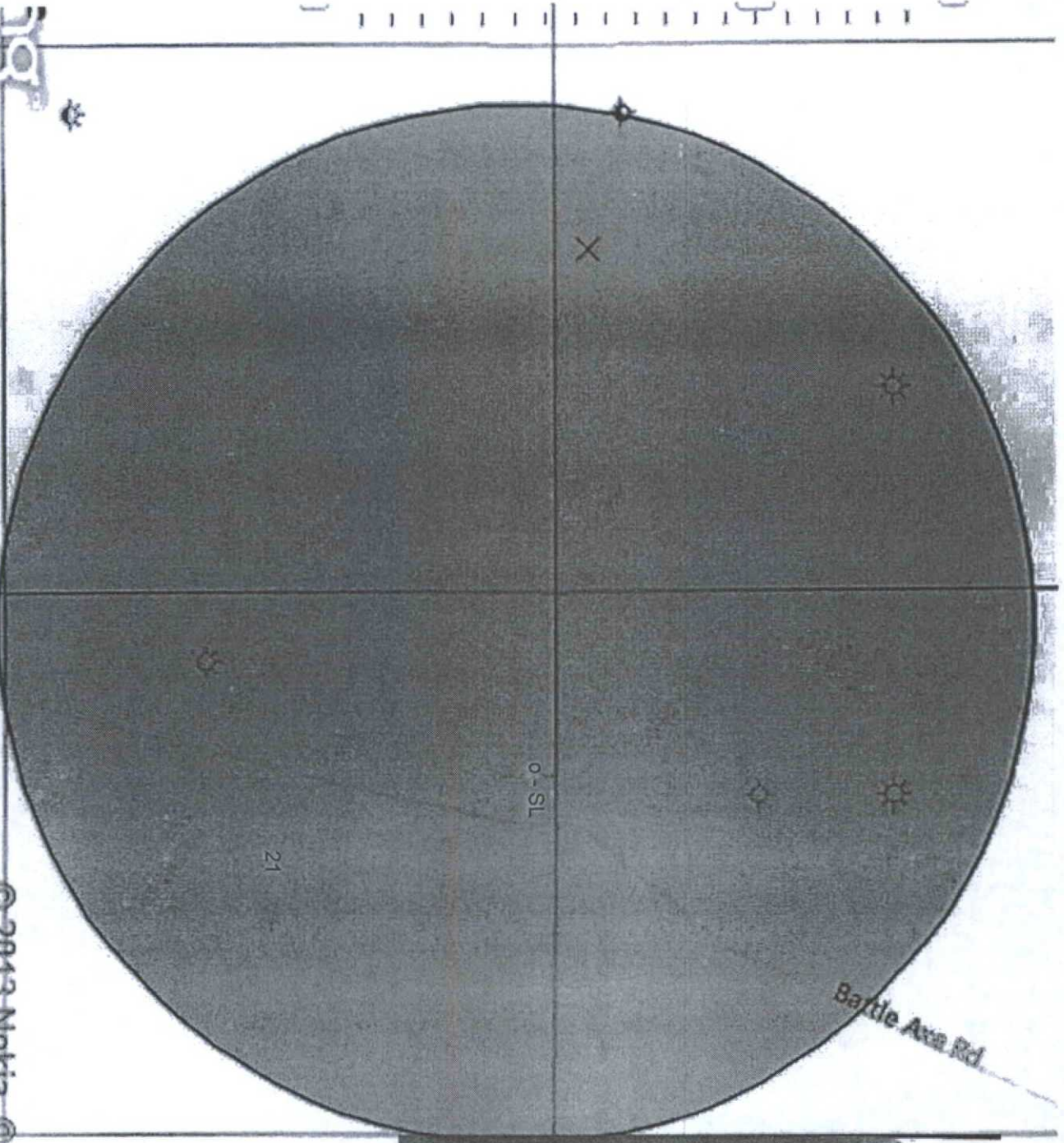
SCALE: NTS
DATE: 3-26-15
SURVEYED BY: BK/ER
DRAWN BY: LNY
APPROVED BY: RMH
SHEET : 1 OF 1



- Drilling (Well Start)
- x Abandoned Location (Permit)
- ✱ Gas Well
- Oil Well
- ✱ Oil and Gas Well
- Other (Observation, etc)
- Injection Well
- Suspended
- ✱ Plugged Gas Well
- ✱ Plugged Oil Well
- ✱ Plugged Oil and Gas
- ✱ Dry Hole (No Show)
- ✱ Dry Hole w/Gas Show
- ✱ Dry Hole w/Oil Show
- ✱ Dry Hole w/Oil and Gas Show

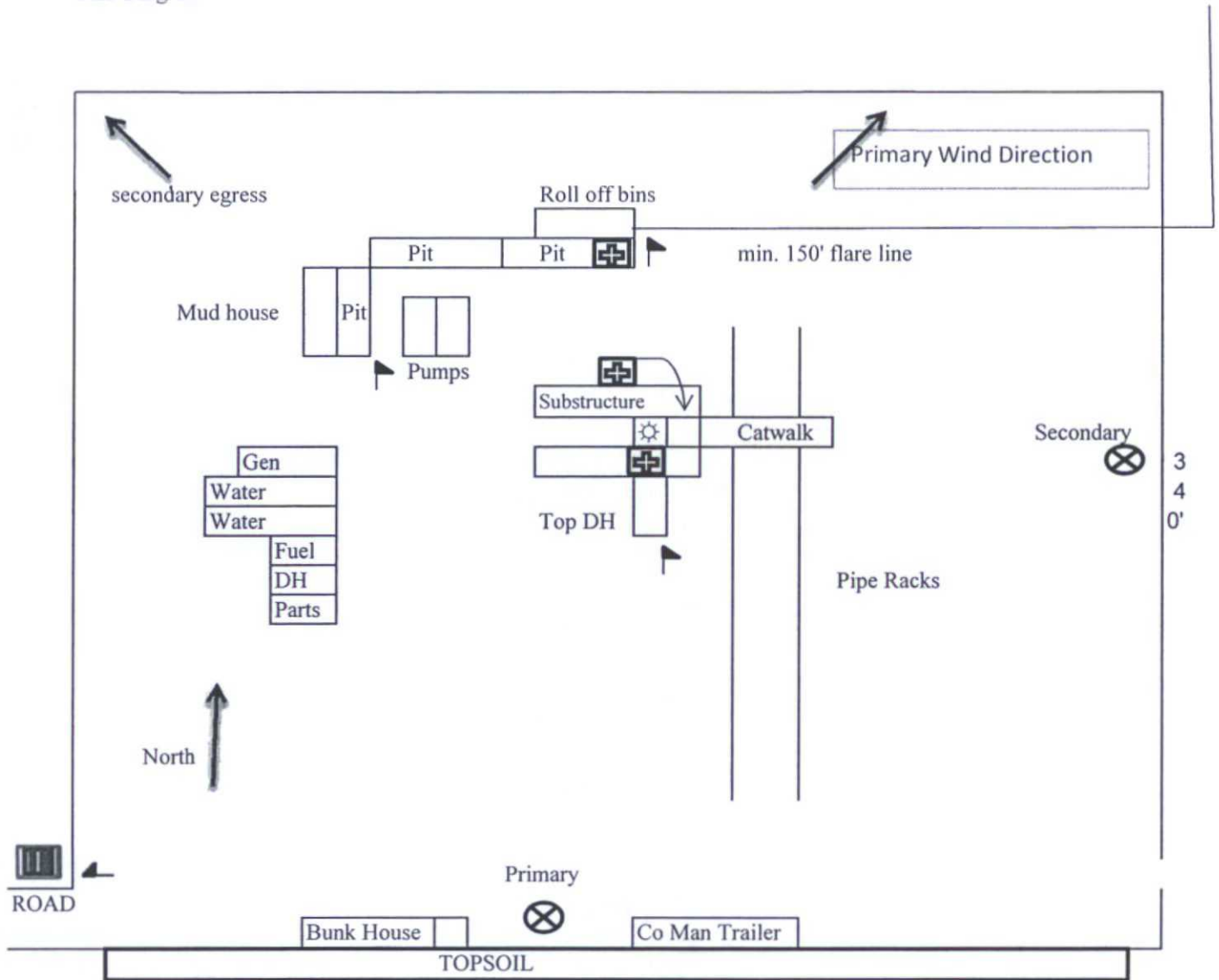
© 2013 Nokia, © AP

- Drilling (Well Start)
- × Abandoned Location (Permit)
- ⊙ Gas Well
- Oil Well
- ⊛ Oil and Gas Well
- Other (Observation, etc)
- ⊙ Injection Well
- Suspended
- ⊙ Plugged Gas Well
- ⊙ Plugged Oil Well
- ⊙ Plugged Oil and Gas
- ⊙ Dry Hole (No Shows)
- ⊙ Dry Hole w/Gas Show
- ⊙ Dry Hole w/Oil Show
- ⊙ Dry Hole w/Oil and Gas Show



© 2013 Nokia, © AND

H2S Diagram



Mewbourne Oil Company
 El Mar 21 A1CN Fed Com #2H
 185' FNL & 2460' FWL
 Sec. 21 T26S R33E
 Lea County, NM



= Warning Signs



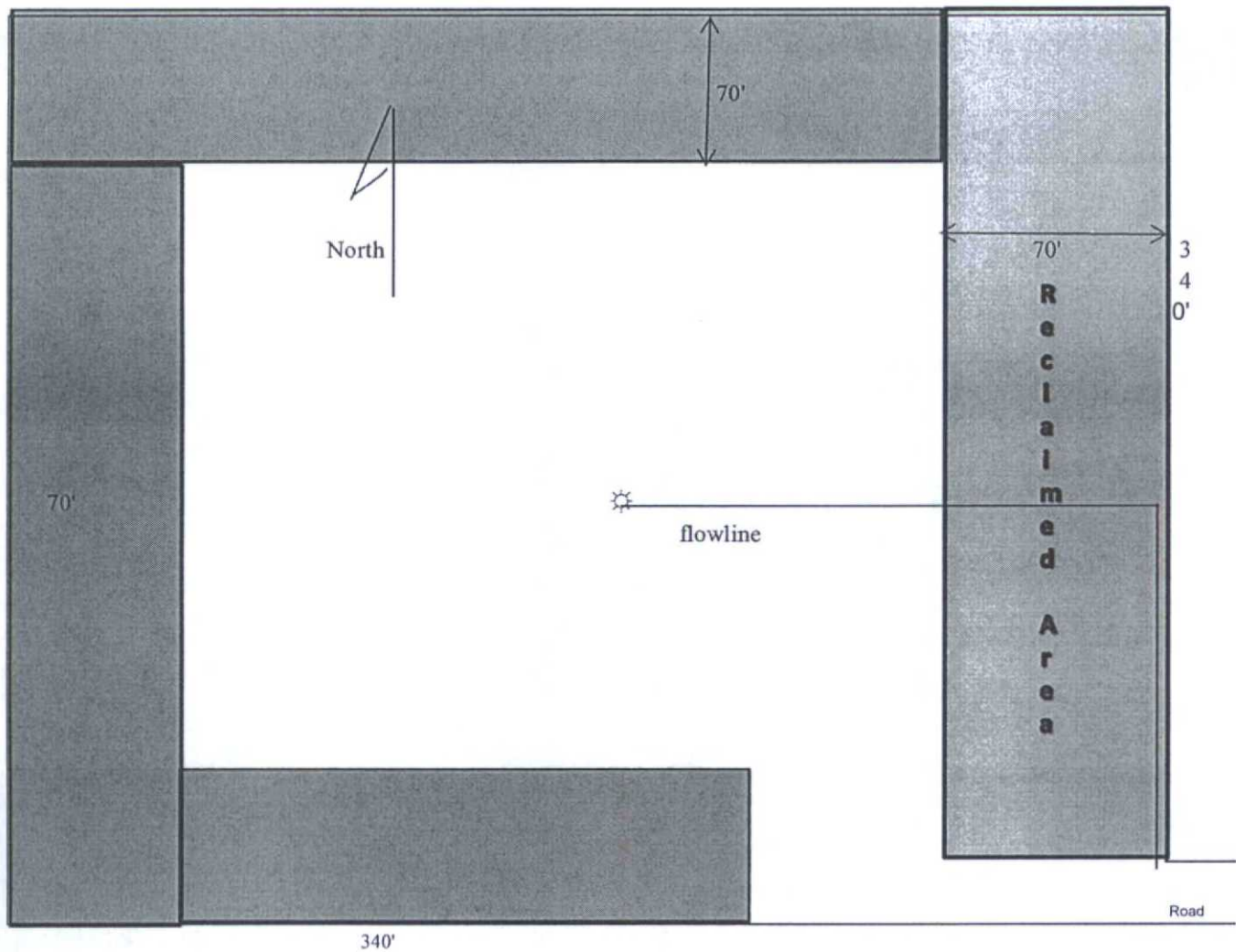
= Wind Markers



= H2S Monitors



= Safety Stations



Mewbourne Oil Company
El Mar 21 A1CN Fed Com #2H
185' FNL & 2460' FWL
Sec. 21 T26S R33E
Lea Co. NM