

DISTRICT I
1625 N. French Dr., Hobbs, NM 88240
Phone: (575) 393-6161 Fax: (575) 393-0720

DISTRICT II
811 S. First St., Artesia, NM 88210
Phone: (575) 748-1283 Fax: (575) 748-9720

DISTRICT III
1000 Rio Brazos Road, Aztec, NM 87410
Phone: (505) 334-6178 Fax: (505) 334-6170

DISTRICT IV
1220 S. St. Francis Dr., Santa Fe, NM 87505
Phone: (505) 476-3460 Fax: (505) 476-3462

State of New Mexico
Energy, Minerals & Natural Resources Department
OIL CONSERVATION DIVISION
1220 South St. Francis Dr.
Santa Fe, New Mexico 87505

Form C-102
Revised August 1, 2011
Submit one copy to appropriate
District Office

AMENDED REPORT

WELL LOCATION AND ACREAGE DEDICATION PLAT

API Number 30-026-4293	Pool Code 97899	Pool Name MC-025 G-00 58533604; Bone Spring
Property Code	Property Name OUTRIDER FEDERAL	Well Number 5H
OGRID No. 005380	Operator Name XTO ENERGY	Elevation 3577'

Surface Location

UL or lot No.	Section	Township	Range	Lot Idn	Feet from the	North/South line	Feet from the	East/West line	County
D	27	24-S	32-E		170	NORTH	635	WEST	LEA

Bottom Hole Location If Different From Surface

UL or lot No.	Section	Township	Range	Lot Idn	Feet from the	North/South line	Feet from the	East/West line	County
M	27	24-S	32-E		200	SOUTH	635	WEST	LEA

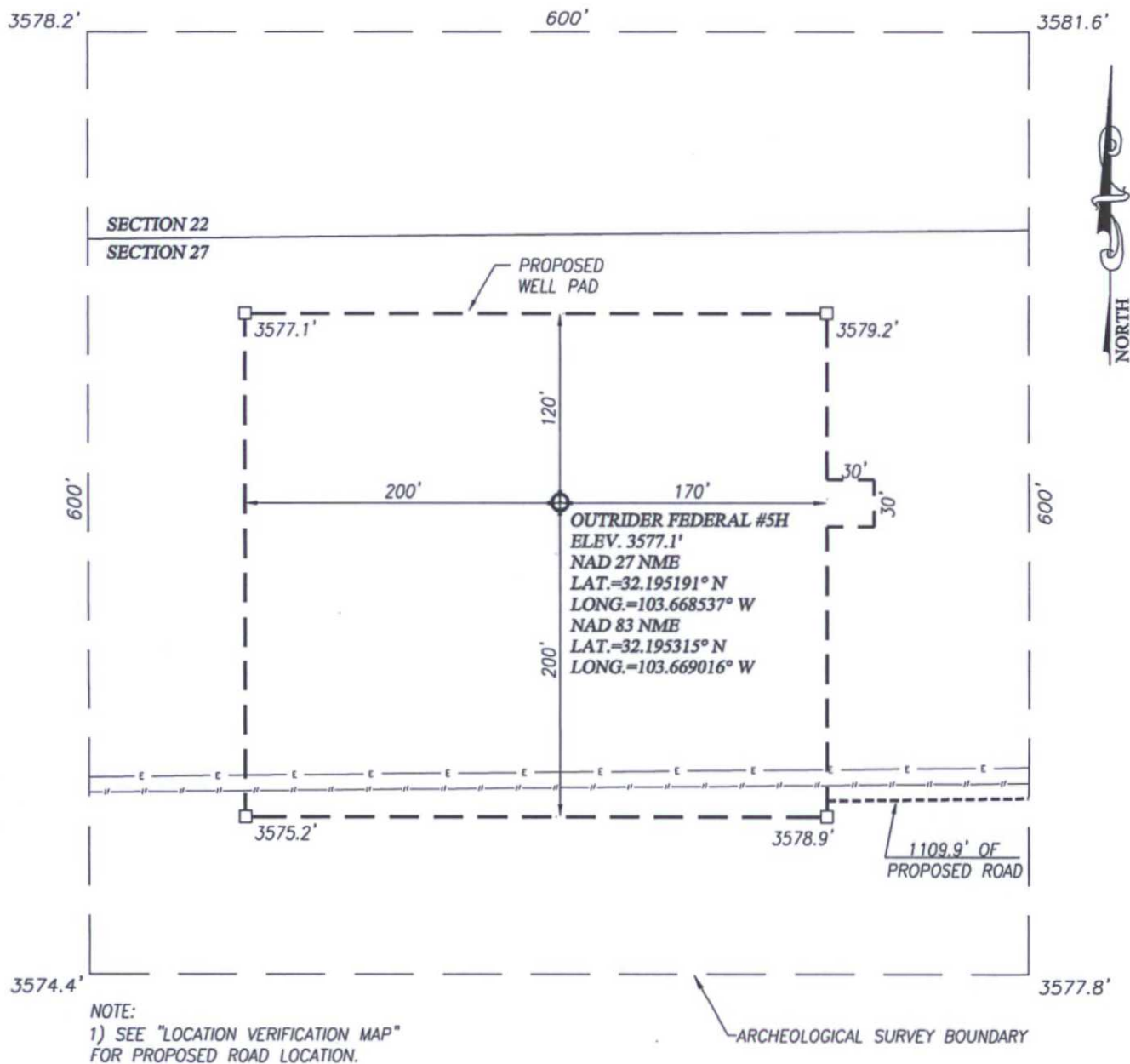
Dedicated Acres 11.00	Joint or Infill	Consolidation Code	Order No.
---------------------------------	-----------------	--------------------	-----------

NO ALLOWABLE WILL BE ASSIGNED TO THIS COMPLETION UNTIL ALL INTERESTS HAVE BEEN CONSOLIDATED OR A NON-STANDARD UNIT HAS BEEN APPROVED BY THE DIVISION

	GEODETIC COORDINATES NAD 27 NME SURFACE LOCATION Y= 435366.2 N X= 705647.5 E LAT.=32.195191° N LONG.=103.668537° W 1st TP NAD 27 NME Y= 434666.4 N X= 705652.2 E LAT.=32.193267° N LONG.=103.668536° W	GEODETIC COORDINATES NAD 83 NME SURFACE LOCATION Y= 435424.8 N X= 746832.1 E LAT.=32.195315° N LONG.=103.669016° W 1st TP NAD 83 NME Y= 434724.9 N X= 746836.9 E LAT.=32.193391° N LONG.=103.669015° W	OPERATOR CERTIFICATION I hereby certify that the information herein is true and complete to the best of my knowledge and belief, and that this organization either owns a working interest or unleased mineral interest in the land including the proposed bottom hole location or has a right to drill this well at this location pursuant to a contract with an owner of such mineral or working interest, or to a voluntary pooling agreement or a compulsory pooling order heretofore entered by the division. Alphonse Rabadue 1-9-15 Signature Date Alphonse Rabadue Printed Name alphonse.rabadue@xenergy.com E-mail Address
	CORNER COORDINATES TABLE NAD 27 NME A - Y= 435529.9 N, X= 705011.4 E B - Y= 435542.9 N, X= 706332.6 E C - Y= 430265.4 N, X= 706367.3 E D - Y= 430252.4 N, X= 705047.2 E		
	CORNER COORDINATES TABLE NAD 83 NME A - Y= 435588.5 N, X= 746196.1 E B - Y= 435601.5 N, X= 747517.3 E C - Y= 430323.9 N, X= 747552.1 E D - Y= 430310.9 N, X= 746232.0 E		
	BOTTOM HOLE LOCATION NAD 27 NME Y= 430458.6 N X= 705680.7 E LAT.=32.181701° N LONG.=103.668528° W 2nd TP NAD 27 NME Y= 430588.6 N X= 705679.8 E LAT.=32.182058° N LONG.=103.668528° W	BOTTOM HOLE LOCATION NAD 83 NME Y= 430517.1 N X= 746865.5 E LAT.=32.181825° N LONG.=103.669006° W 2nd TP NAD 83 NME Y= 430647.0 N X= 746864.6 E LAT.=32.182182° N LONG.=103.669007° W	

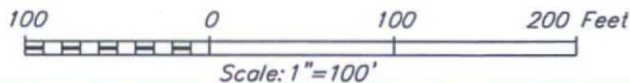
SURVEYOR CERTIFICATION I hereby certify that the well location shown on this plat was plotted from field notes of actual surveys made by me or under my supervision, and that the same is true and correct to the best of my belief. DECEMBER 9, 2014 Date of Survey Signature & Seal of Professional Surveyor: 3239 Certificate Number Gary G. Eidson 12641 Ronald J. Eidson 3239 LSL JWSC W.O.: 14.11.1235
--

NOV 09 2015



DIRECTIONS TO OUTRIDER FEDERAL #5H:

FROM THE INTERSECTION OF STATE HWY. 128 AND CO. RD. J1 (ORLA) GO EAST ON HWY. 128 0.6 MILES TURN RIGHT AND GO SOUTH 1.6 MILES TURN RIGHT AND GO WEST 0.2 MILES TURN RIGHT AND GO NORTH 0.3 MILES TO BEGIN RD. STAKE, FOLLOW RD. STAKES 1109.9' WEST TO THIS LOCATION.



XTO ENERGY

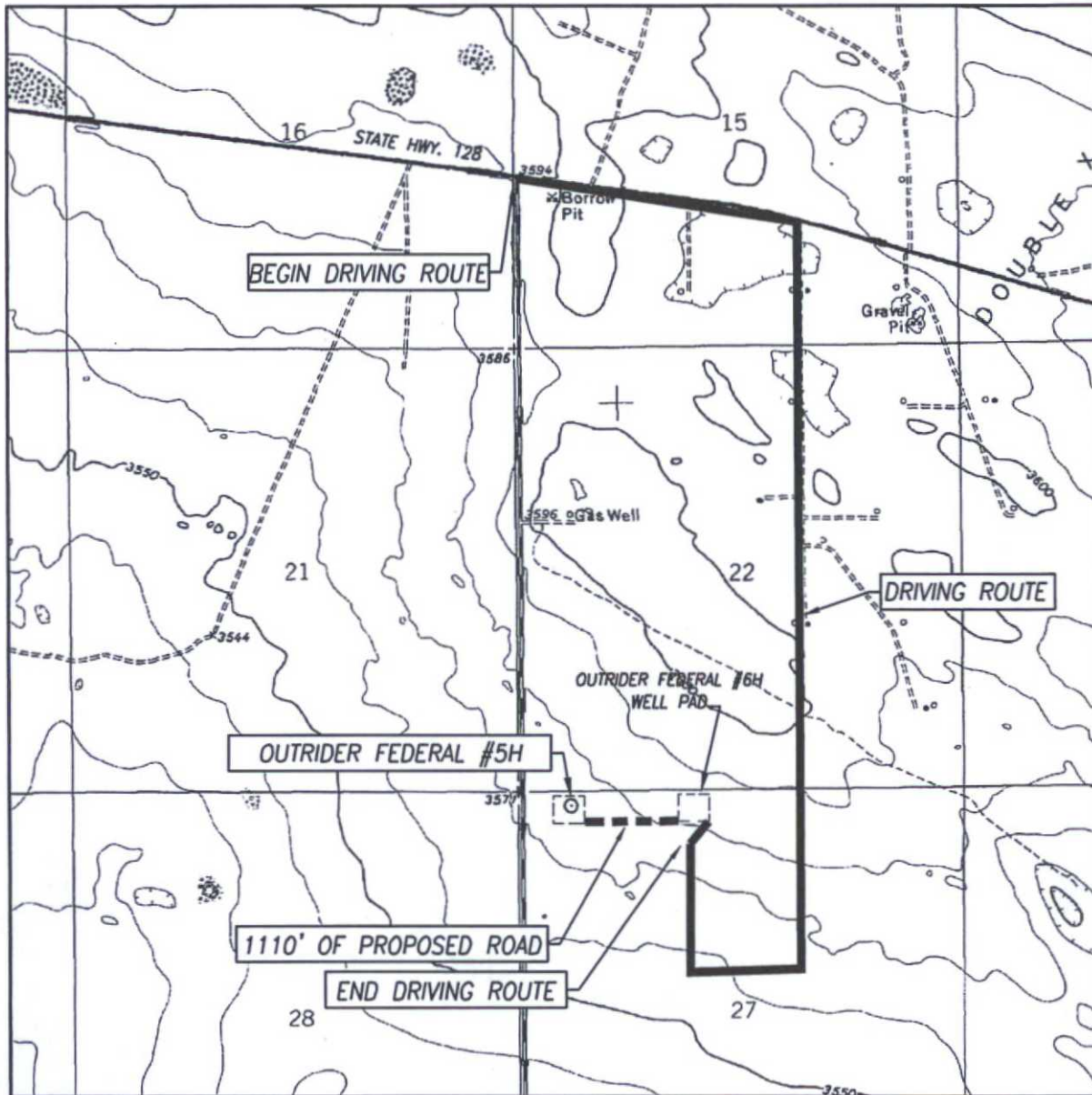
OUTRIDER FEDERAL #5H WELL
LOCATED 170 FEET FROM THE NORTH LINE
AND 635 FEET FROM THE WEST LINE OF SECTION 27,
TOWNSHIP 24 SOUTH, RANGE 32 EAST, N.M.P.M.,
LEA COUNTY, NEW MEXICO

Survey Date: 12/9/14	CAD Date: 1/16/15	Drawn By: LSL
W.O. No.: 14111235	Rev. :	Rel. W.O.:
		Sheet 1 of 1



PROVIDING SURVEYING SERVICES
SINCE 1946
JOHN WEST SURVEYING COMPANY
412 N. DAL PASO HOBBS, N.M. 88240
(575) 393-3117 www.jwsc.biz
TBPLS# 10021000

LOCATION VERIFICATION MAP



SCALE: 1" = 2000'

CONTOUR INTERVAL:
PADUCA BREAKS NW, N.M. - 10'

SEC. 27 TWP. 24-S RGE. 32-E

SURVEY N.M.P.M.

COUNTY LEA STATE NEW MEXICO

DESCRIPTION 170' FNL & 635' FWL

ELEVATION 3577'

OPERATOR XTO ENERGY

LEASE OUTRIDER FEDERAL

U.S.G.S. TOPOGRAPHIC MAP
PADUCA BREAKS NW, N.M.

DIRECTIONS TO OUTRIDER FEDERAL #5H:

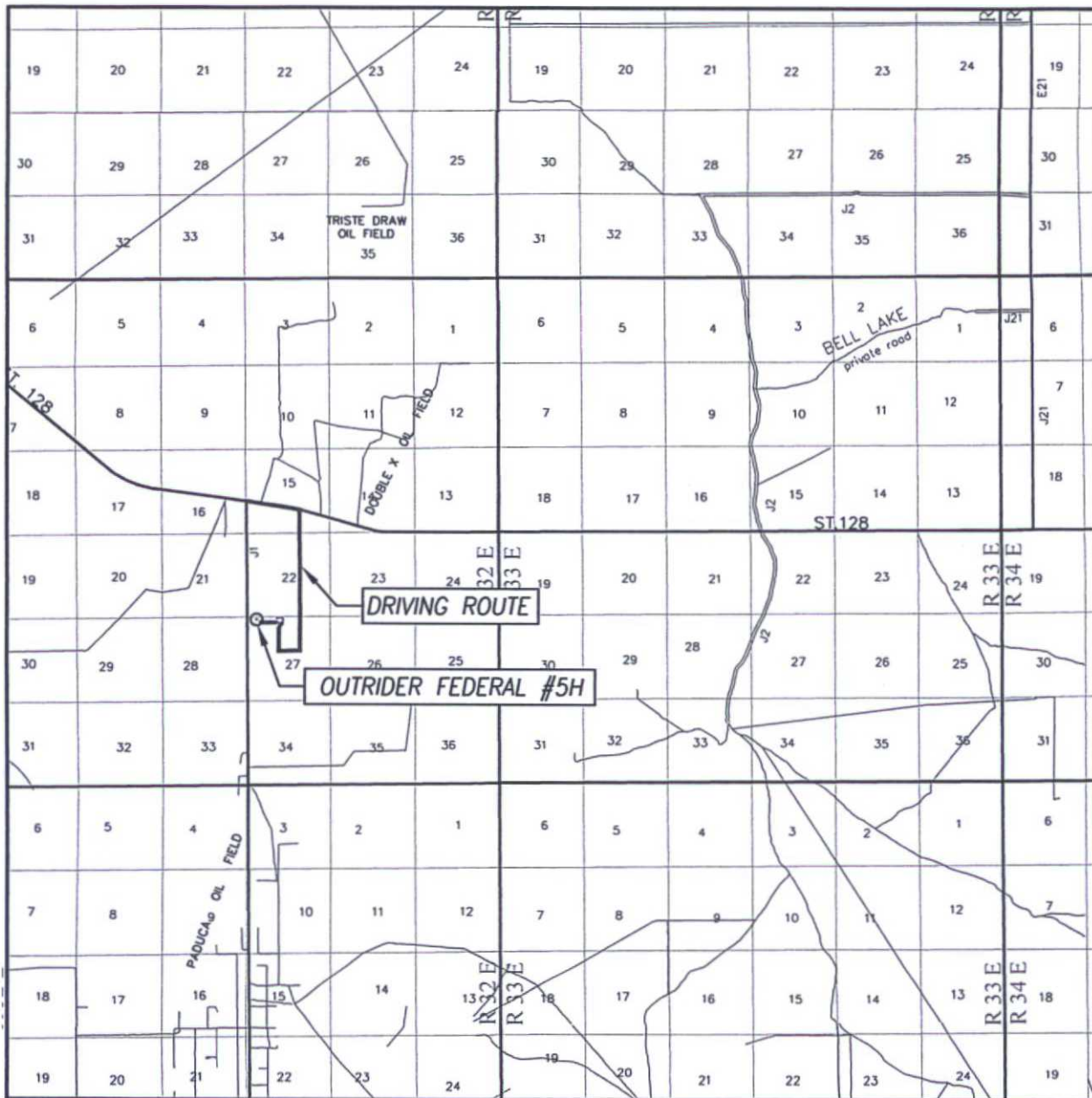
FROM THE INTERSECTION OF STATE HWY. 128 AND CO. RD. J1 (ORLA) GO EAST ON HWY. 128 0.6 MILES TURN RIGHT AND GO SOUTH 1.6 MILES TURN RIGHT AND GO WEST 0.2 MILES TURN RIGHT AND GO NORTH 0.3 MILES TO BEGIN RD. STAKE, FOLLOW RD. STAKES 1109.9' WEST TO THIS LOCATION.

PROVIDING SURVEYING SERVICES
SINCE 1946

JOHN WEST SURVEYING COMPANY


412 N. DAL PASO HOBBS, N.M. 88240
(575) 393-3117 www.jwsc.biz
TBPLS# 10021000

VICINITY MAP



SCALE: 1" = 2 MILES
DRIVING ROUTE: SEE LOCATION VERIFICATION MAP

SEC. 27 TWP. 24-S RGE. 32-E
SURVEY N.M.P.M.
COUNTY LEA STATE NEW MEXICO
DESCRIPTION 170' FNL & 635' FWL
ELEVATION 3577'
OPERATOR XTO ENERGY
LEASE OUTRIDER FEDERAL



PROVIDING SURVEYING SERVICES
SINCE 1946
JOHN WEST SURVEYING COMPANY
412 N. DAL PASO HOBBS, N.M. 88240
(575) 393-3117 www.jwsc.biz
TBPLS# 10021000

Outrider Federal Lease

