

DISTRICT I
1625 N. French Dr., Hobbs, NM 88240
Phone: (575) 393-6161 Fax: (575) 393-0720

DISTRICT II
811 S. First St., Artesia, NM 88210
Phone: (575) 748-1283 Fax: (575) 748-9720

DISTRICT III
1000 Rio Brazos Rd., Artesia, NM 87410
Phone: (505) 334-6178 Fax: (505) 334-6170

DISTRICT IV
1220 S. St. Francis Dr., Santa Fe, NM 87505
Phone: (505) 478-3480 Fax: (505) 478-3482

State of New Mexico
Energy, Minerals & Natural Resources Department

HOBBS OCD

Form C-102
Revised August 1, 2011
Submit one copy to appropriate
District Office

OIL CONSERVATION DIVISION

1220 South St. Frances Dr.

Santa Fe, NM 87505

NOV 23 2015

RECEIVED

☐ AMENDED REPORT

WELL LOCATION AND ACREAGE DEDICATION PLAT

API Number 30-025-42958	Pool Code 37570	Pool Name Lea; Bone Spring
Property Code 302802	Property Name LEA UNIT	Well Number 51H
OGRID No. 240974	Operator Name LEGACY RESERVES OPERATING LP	Elevation 3680'

Surface Location

UL or lot No.	Section	Township	Range	Lot Idn	Feet from the	North/South line	Feet from the	East/West line	County
P	01	20 S	34 E		630	SOUTH	660	EAST	LEA

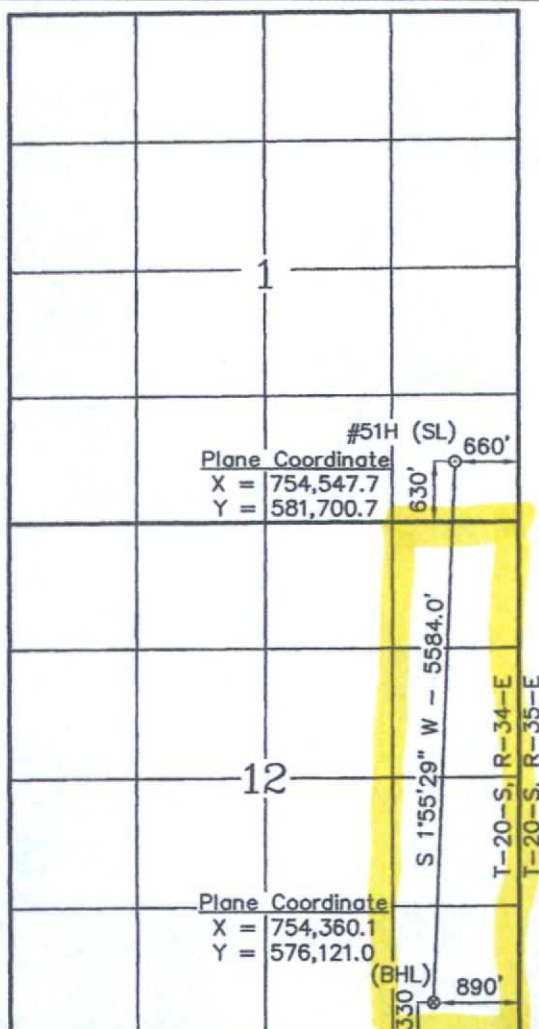
Bottom Hole Location If Different From Surface

UL or lot No.	Section	Township	Range	Lot Idn	Feet from the	North/South line	Feet from the	East/West line	County
P	12	20 S	34 E		330	SOUTH	890	EAST	LEA

Dedicated Acres 160	Joint or Infill	Consolidation Code	Order No.
------------------------	-----------------	--------------------	-----------

NO ALLOWABLE WILL BE ASSIGNED TO THIS COMPLETION UNTIL ALL INTERESTS HAVE BEEN CONSOLIDATED OR A NON-STANDARD UNIT HAS BEEN APPROVED BY THE DIVISION

NOTE:
1) Plane Coordinates shown hereon are Transverse Mercator Grid and Conform to the "New Mexico Coordinate System", New Mexico East Zone, North American Datum of 1927. Distances shown hereon are mean horizontal surface values.



OPERATOR CERTIFICATION

I hereby certify that the information contained herein is true and complete to the best of my knowledge and belief, and that this organization either owns a working interest or unleased mineral interest in the land including the proposed bottom hole location or has a right to drill this well at this location pursuant to a contract with an owner of such a mineral or working interest, or to a voluntary pooling agreement or a compulsory pooling order heretofore entered by the division.

Signature: Barry W. Hunt
Date: 9/25/15
Printed Name: Barry W. Hunt

E-mail Address

SURVEYOR CERTIFICATION

I hereby certify that the well location shown on this plat was plotted from field notes of actual surveys made by me or under my supervision, and that the same is true and correct to the best of my belief.

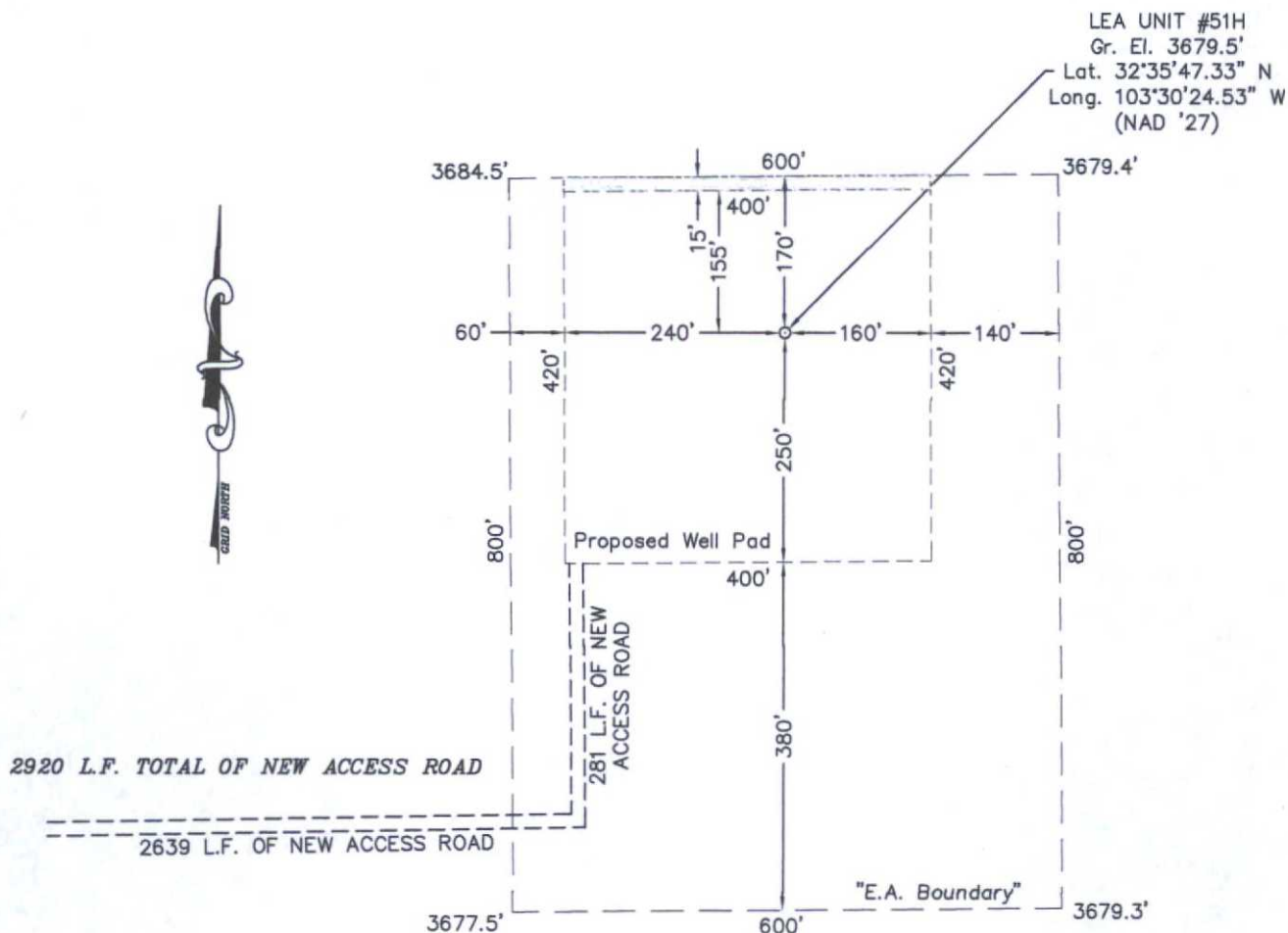
Date of Survey: June 19, 2015
Signature & Seal of Professional Surveyor: [Seal]
W.O. Num.: 2015-0416-L
Certificate No. Macon McDonald 12185

Scale
1" = 2000'

NOV 30 2015

SECTION 01, TOWNSHIP 20 SOUTH, RANGE 34 EAST, N.M.P.M.
LEA COUNTY
NEW MEXICO

2015-0416-L2



DRIVING DIRECTIONS

FROM THE INTERSECTION OF STATE HIGHWAY 18 AND U.S. HIGHWAY 62-180 IN HOBBS, NEW MEXICO, GO WEST AND SOUTHWEST ON U.S. HIGHWAY 62-180 23.6 MILES TO MARATHON ROAD / CO. RD. 27-A ON SOUTH (LEFT) SIDE OF THE HIGHWAY. THEN GO SOUTH 2.8 MILES TO A LEASE ROAD ON THE EAST (LEFT) SIDE OF THE ROAD, THEN GO EAST ON LEASE ROAD 0.6 MILES TO A POINT APPROXIMATELY 600 FEET SOUTH OF THE PROPOSED LOCATION.

LEGACY RESERVES OPERATING LP

LEA UNIT #51H

Located 630' FSL & 660' FEL, Section 01
Township 20 South, Range 34 East, N.M.P.M.
Lea County, New Mexico

Drawn By: SC

Date: July 1, 2015

Scale: 1" = 200'

Field Book: 587 / 46-48

Revision Date: 9-14-15

Quadrangle: Lea

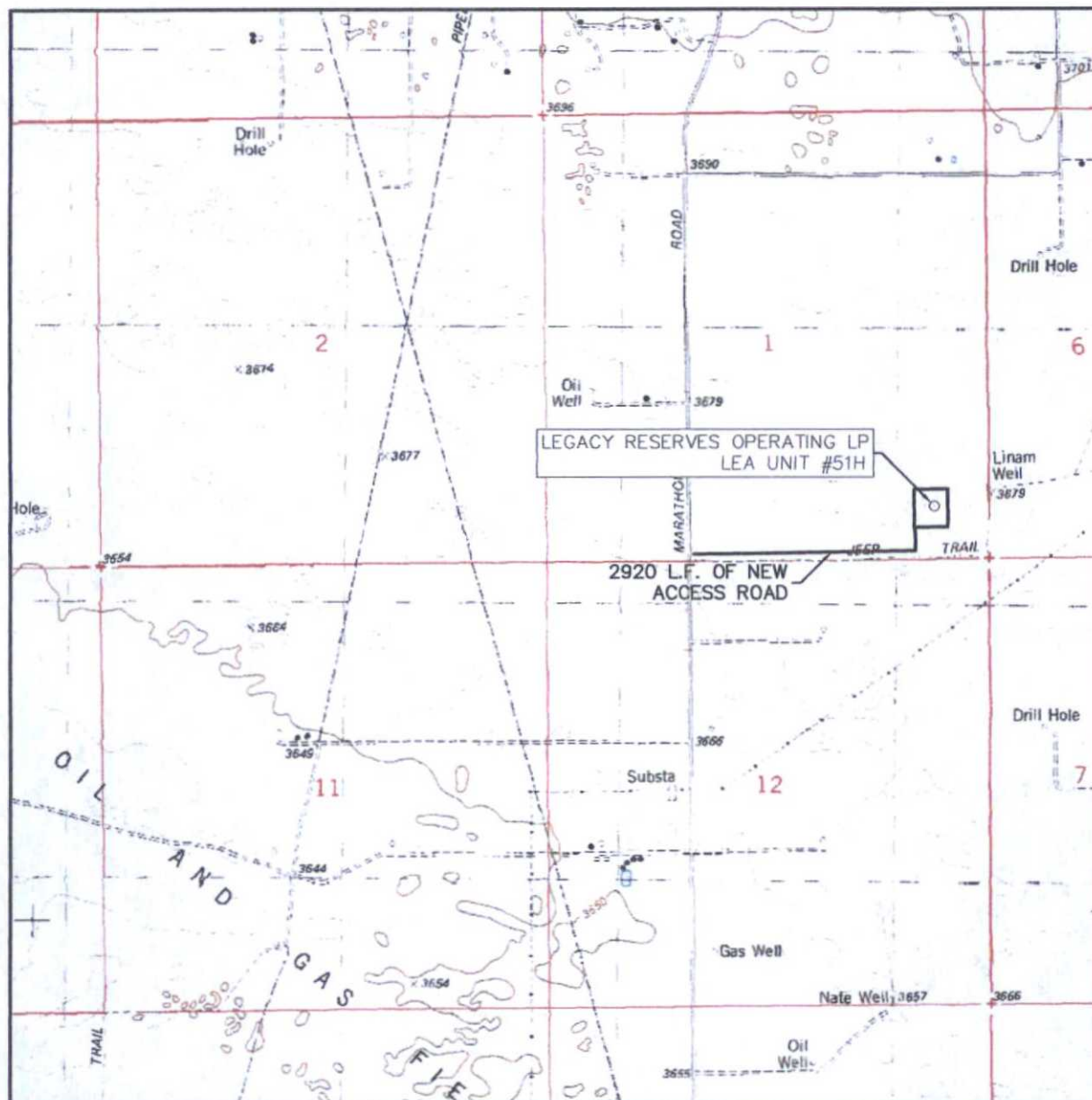
W.O. No: 2015-0416

Dwg. No.: 2015-0416-L2



SURVEYORS - ENGINEERS - PLANNERS
110 W. LOUISIANA AVE., SUITE 110
MIDLAND, TEXAS 79701
(432) 687-0865 - FAX (432) 687-0868

LOCATION VERIFICATION MAP



SCALE: 1" = 2000'

CONTOUR INTERVAL:
LEA - 10'

SEC. 01 TWP. 20-S RGE. 34-E

SURVEY N.M.P.M.

COUNTY LEA

DESCRIPTION 630' FSL & 660' FEL

ELEVATION 3680'

OPERATOR LEGACY RESERVES OPERATING LP

LEASE LEA UNIT

U.S.G.S. TOPOGRAPHIC MAP

LEA



WEST COMPANY
Land Surveyors • Civil Engineers

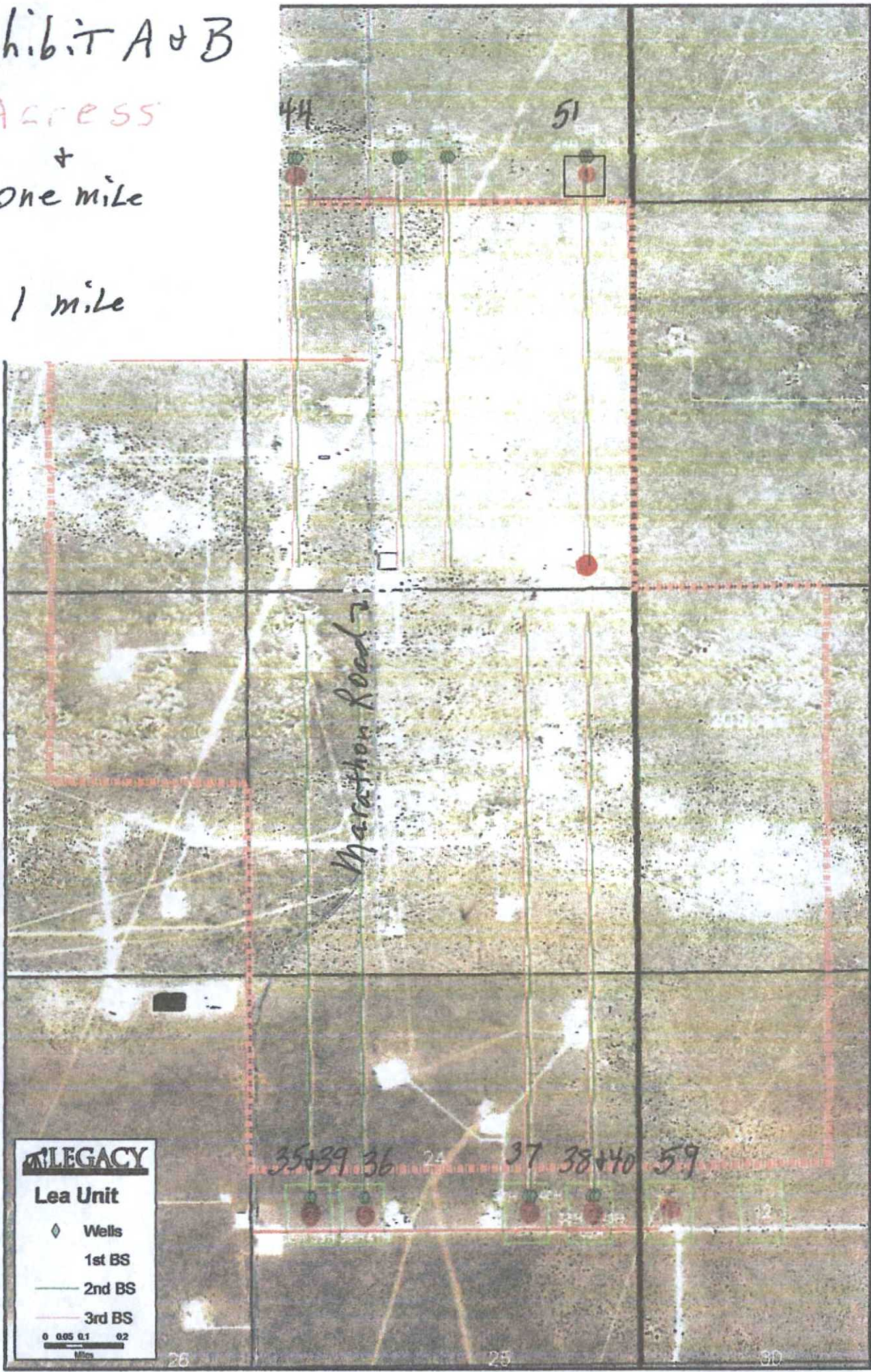
SURVEYORS - ENGINEERS - PLANNERS
110 W. LOUISIANA AVE., SUITE 110
MIDLAND, TEXAS 79701
(432) 687-0865 - FAX (432) 687-0868

Exhibit A+B

Access

+
One mile

3" = 1 mile



LEGACY

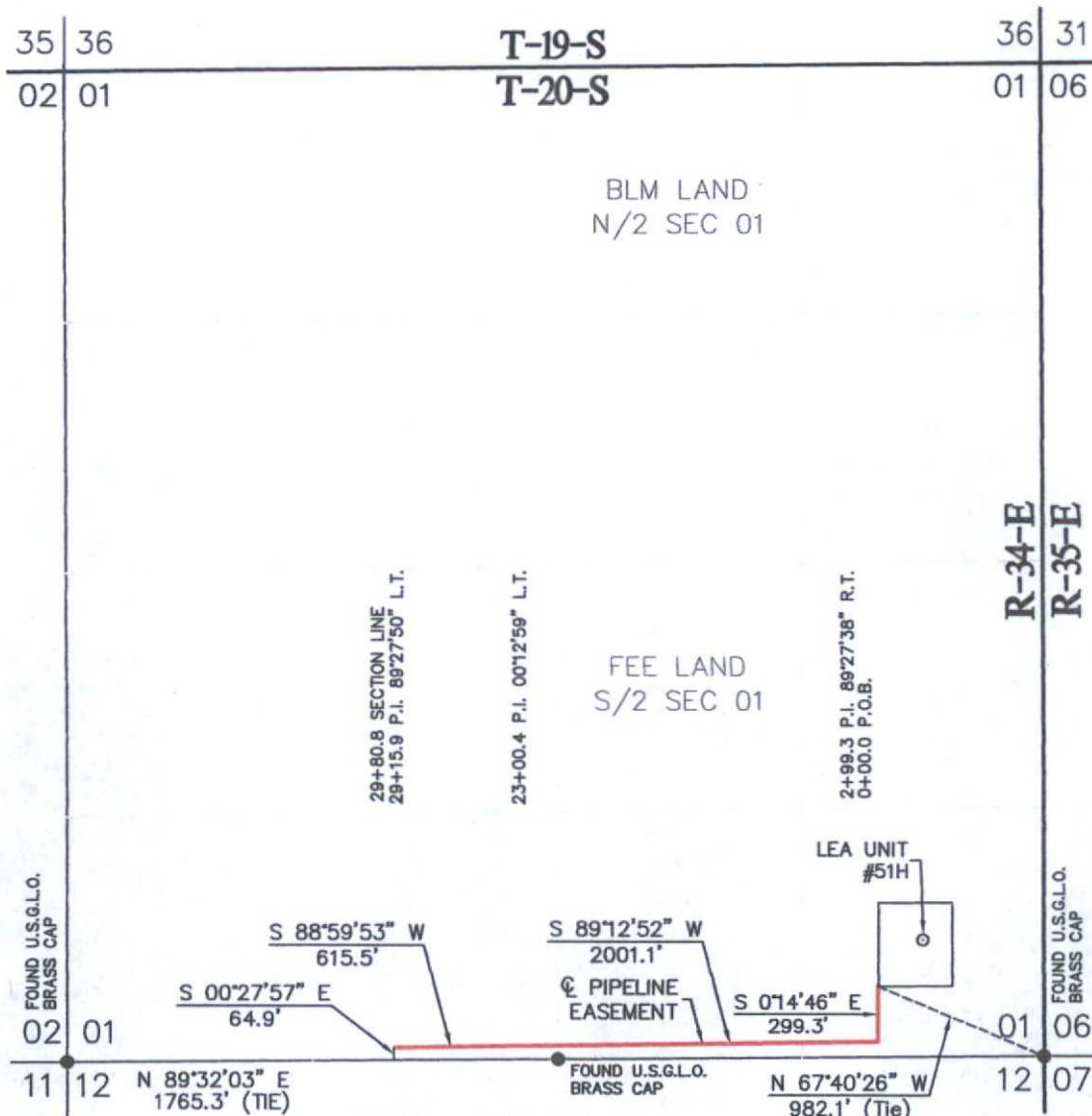
Lea Unit

- ◆ Wells
- 1st BS
- - - 2nd BS
- ... 3rd BS

0 0.05 0.1 0.2
Miles

Exhibit E

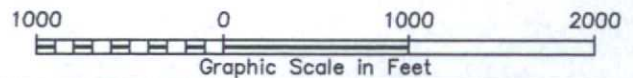
SECTION 01, TOWNSHIP 20 SOUTH, RANGE 34 EAST, N.M.P.M.
LEA COUNTY NEW MEXICO



Flowline

LEGEND

- - DENOTES FOUND MONUMENT (AS DESCRIBED)
- - DENOTES PIPE LINE



LEGAL DESCRIPTION

A STRIP OF LAND BEING 50 FEET WIDE, 2,980.8 FEET OR 0.565 MILES IN LENGTH AND BEING 25.0 FEET RIGHT AND 25.0 FEET LEFT OF THE ABOVE PLATTED CENTERLINE.

LEGACY RESERVES OPERATING LP

A PIPELINE EASEMENT LOCATED ON
FEE LAND IN SECTION 01
TOWNSHIP 20 SOUTH, RANGE 34 EAST,
N.M.P.M., LEA COUNTY, NEW MEXICO

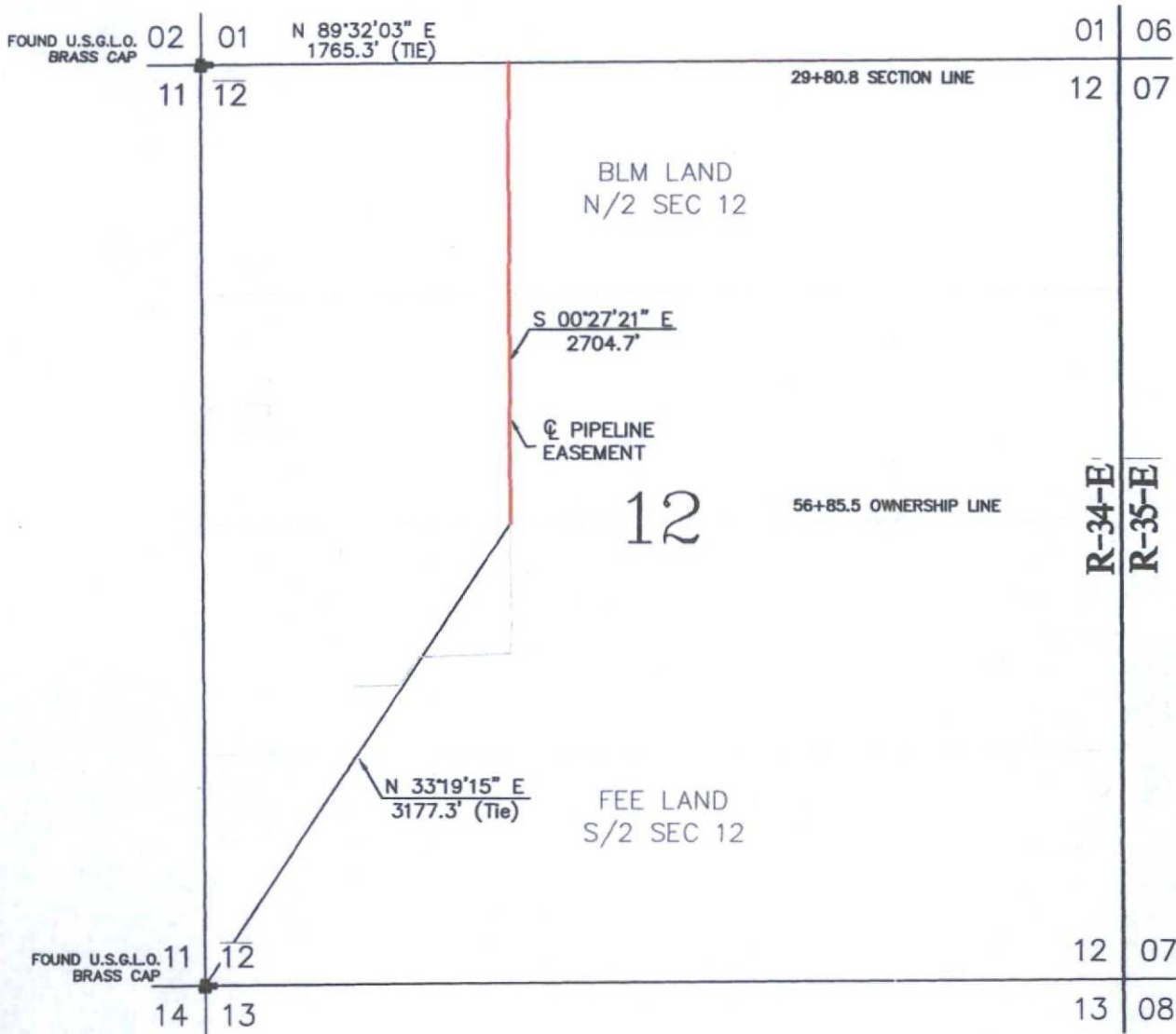


SURVEYORS - ENGINEERS - PLANNERS
110 W. LOUISIANA AVE., SUITE 110
MIDLAND, TEXAS 79701
(432) 687-0865 - FAX (432) 687-0868

Survey Date: June 19, 2015	Sheet 1 of 1 Sheets
W.O. Number: 2015-0416	Drawn By: SC/LRG
Date: 9-14-15	2015-0416-L4.DWG
Scale: 1" = 1000'	

Ex. E

SECTION 12, TOWNSHIP 20 SOUTH, RANGE 34 EAST, N.M.P.M.
LEA COUNTY NEW MEXICO



LEGAL DESCRIPTION

A STRIP OF LAND BEING 50 FEET WIDE, 2,704.7 FEET OR 0.512 MILES IN LENGTH AND BEING 25.0 FEET RIGHT AND 25.0 FEET LEFT OF THE ABOVE PLATTED CENTERLINE.

LEGACY RESERVES OPERATING LP

A PIPELINE EASEMENT LOCATED ON
BLM LAND IN SECTION 12
TOWNSHIP 20 SOUTH, RANGE 34 EAST,
N.M.P.M., LEA COUNTY, NEW MEXICO

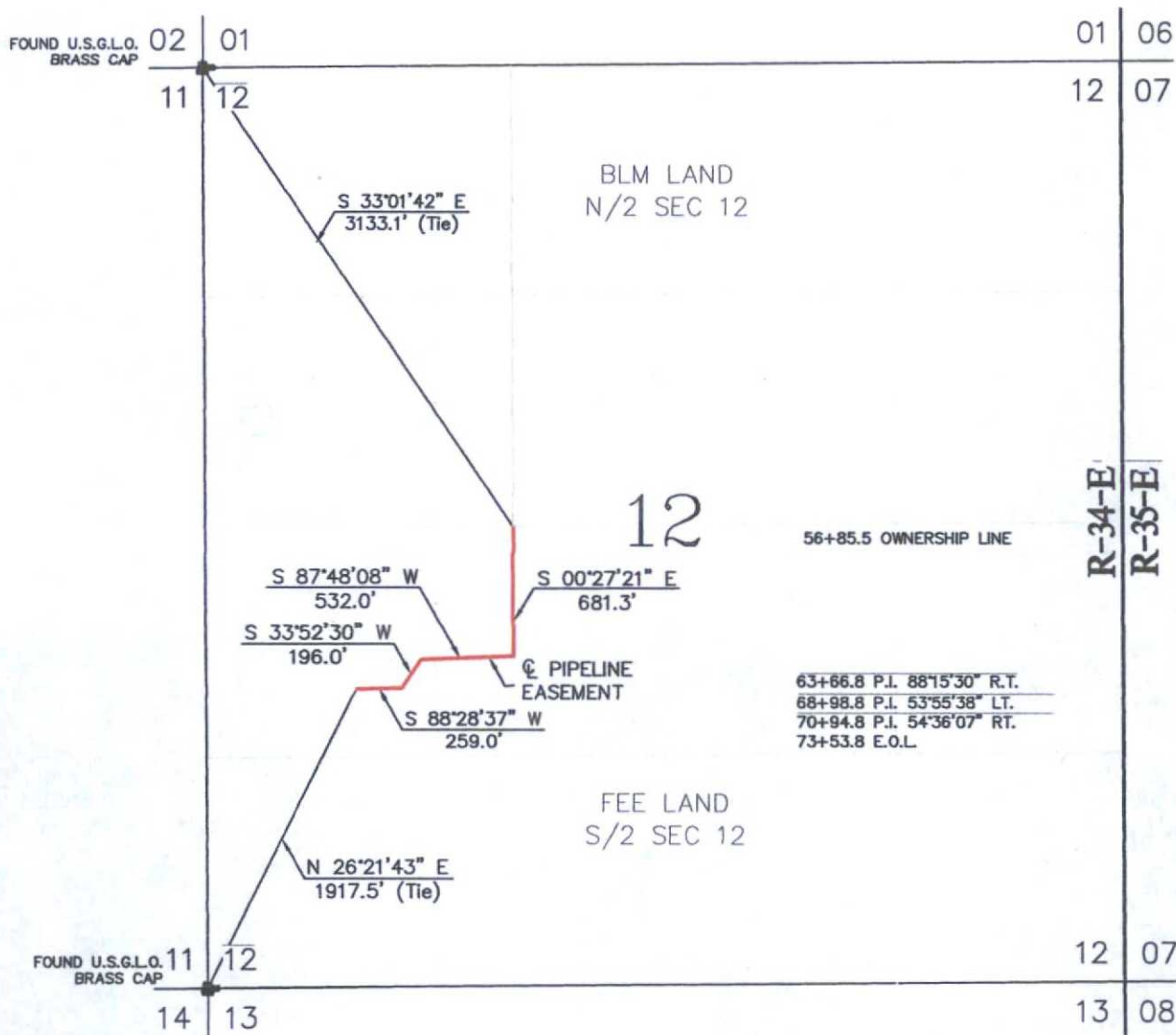


SURVEYORS - ENGINEERS - PLANNERS
110 W. LOUISIANA AVE., SUITE 110
MIDLAND, TEXAS 79701
(432) 687-0865 - FAX (432) 687-0868

Survey Date: June 22, 2015	Sheet 3 of 3 Sheets
W.O. Number: 2015-0416	Drawn By: SC
Date: 9-17-2015	2015-0416-L5.DWG Scale: 1" = 1000'

Ex. E

SECTION 12, TOWNSHIP 20 SOUTH, RANGE 34 EAST, N.M.P.M. LEA COUNTY NEW MEXICO

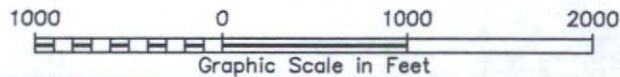


LEGAL DESCRIPTION

A STRIP OF LAND BEING 50 FEET WIDE, 1,668.3 FEET OR 0.316 MILES IN LENGTH AND BEING 25.0 FEET RIGHT AND 25.0 FEET LEFT OF THE ABOVE PLATTED CENTERLINE.

LEGEND

- - DENOTES FOUND MONUMENT (AS DESCRIBED)
- - DENOTES PIPELINE



LEGACY RESERVES OPERATING LP

A PIPELINE EASEMENT LOCATED ON
FEE LAND IN SECTION 12
TOWNSHIP 20 SOUTH, RANGE 34 EAST,
N.M.P.M., LEA COUNTY, NEW MEXICO

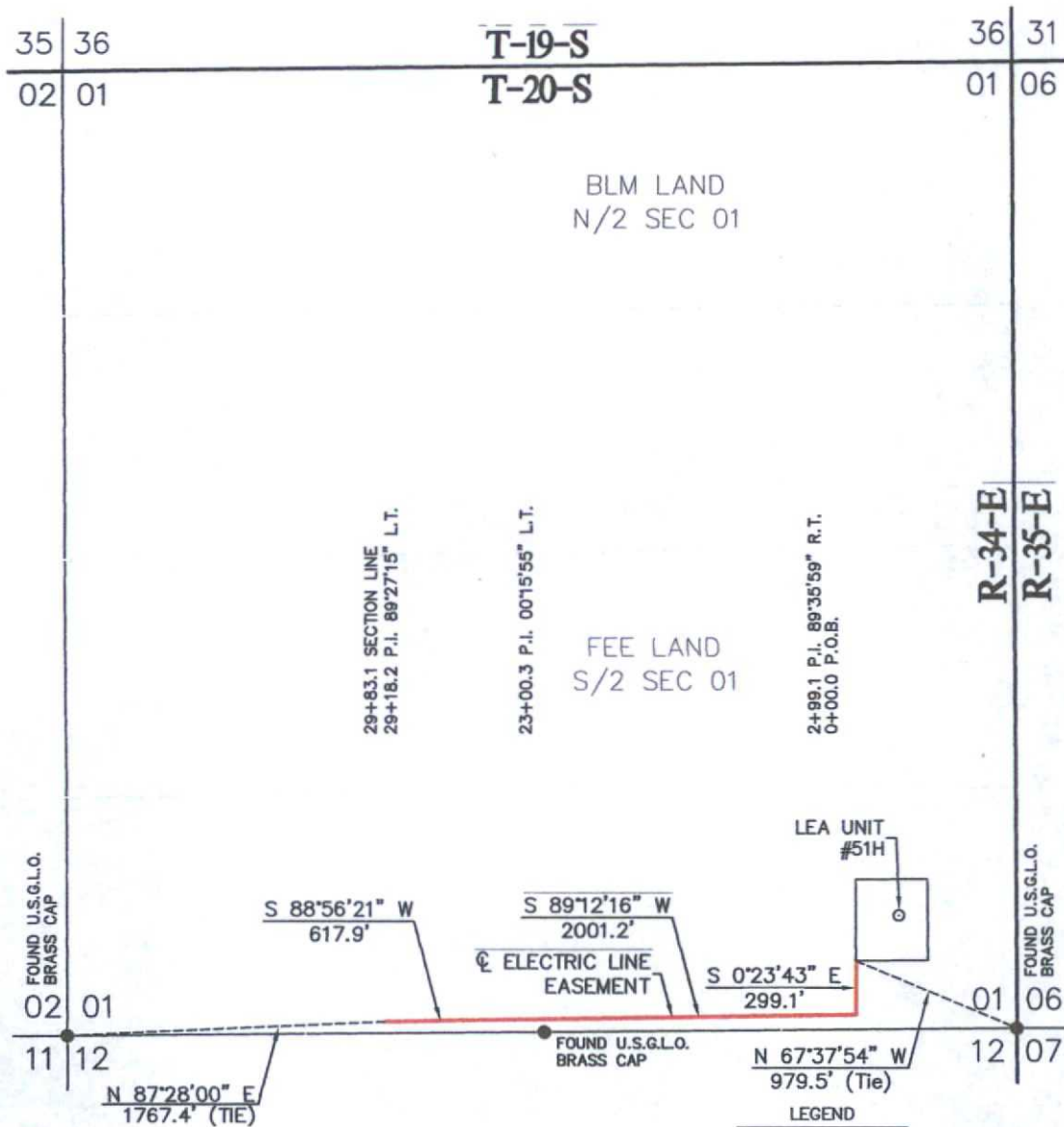


SURVEYORS - ENGINEERS - PLANNERS
110 W. LOUISIANA AVE., SUITE 110
MIDLAND, TEXAS 79701
(432) 687-0865 - FAX (432) 687-0868

Survey Date: June 22, 2015	Sheet 3 of 3 Sheets
W.O. Number: 2015-0416	Drawn By: SC
Date: 9-17-2015	2015-0416-L6.DWG Scale: 1" = 1000'

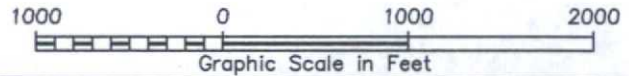
Exhibit F

SECTION 01, TOWNSHIP 20 SOUTH, RANGE 34 EAST, N.M.P.M.
LEA COUNTY NEW MEXICO



LEGAL DESCRIPTION

A STRIP OF LAND BEING 50 FEET WIDE, 2,983.1 FEET OR 0.565 MILES IN LENGTH AND BEING 25.0 FEET RIGHT AND 25.0 FEET LEFT OF THE ABOVE PLATTED CENTERLINE.



LEGACY RESERVES OPERATING LP

AN ELECTRIC LINE EASEMENT LOCATED ON
FEE LAND IN SECTION 01
TOWNSHIP 20 SOUTH, RANGE 34 EAST,
N.M.P.M., LEA COUNTY, NEW MEXICO



SURVEYORS - ENGINEERS - PLANNERS
110 W. LOUISIANA AVE., SUITE 110
MIDLAND, TEXAS 79701
(432) 687-0865 - FAX (432) 687-0868

Survey Date: June 19, 2015	Sheet 1 of 1 Sheets
W.O. Number: 2015-0416	Drawn By: SC/LRG
Date: 9-17-15	2015-0416-L7.DWG
Scale: 1" = 1000'	