

Office

Revised August 1, 2011

District I - (575) 393-6161

1625 N. French Dr., Hobbs, NM 88240

District II - (575) 748-1283

811 S. First St., Artesia, NM 88210

District III - (505) 334-6178

1000 Rio Brazos Rd., Aztec, NM 87410

District IV - (505) 476-3460

1220 S. St. Francis Dr., Santa Fe, NM

87505

Energy, Minerals and Natural Resources

OIL CONSERVATION DIVISION

1220 South St. Francis Dr.

Santa Fe, NM 87505

WELL API NO.

30-025-31888

5. Indicate Type of Lease

STATE ☒ FEE ☐

6. State Oil & Gas Lease No.

7. Lease Name or Unit Agreement Name

Redhawk 32 State

8. Well Number # 1

9. OGRID Number

246368

10. Pool name or Wildcat

Delaware

SUNDRY NOTICES AND REPORTS ON WELLS

(DO NOT USE THIS FORM FOR PROPOSALS TO DRILL OR TO DEEPEN OR PLUG BACK TO A DIFFERENT RESERVOIR. USE "APPLICATION FOR PERMIT" (FORM C-101) FOR SUCH PROPOSALS.)

1. Type of Well: Oil Well ☐ Gas Well ☒ XX Other SWD

2. Name of Operator

Basic Energy Services LP

3. Address of Operator

801 Cherry Street Suite 2100 Fort Worth TX 76102

4. Well Location

Unit Letter L : 1980 feet from the South line and 810 feet from the West line

Section 32 Township 19 S Range 34E NMPM County Lea

11. Elevation (Show whether DR, RKB, RT, GR, etc.)

12. Check Appropriate Box to Indicate Nature of Notice, Report or Other Data

NOTICE OF INTENTION TO:

PERFORM REMEDIAL WORK

PLUG AND ABANDON ☐TEMPORARILY ABANDON ☐CHANGE PLANS ☐PULL OR ALTER CASING ☐MULTIPLE COMPL ☐DOWNHOLE COMMINGLE ☐

SUBSEQUENT REPORT OF:

REMEDIAL WORK ☒ALTERING CASING ☐COMMENCE DRILLING OPNS. ☐P AND A ☐CASING/CEMENT JOB ☐OTHER: ☐OTHER: ☒

TBG Joint Replacement

13. Describe proposed or completed operations. (Clearly state all pertinent details, and give pertinent dates, including estimated date of starting any proposed work). SEE RULE 19.15.7.14 NMAC. For Multiple Completions: Attach wellbore diagram of proposed completion or recompletion.

11/9/15 MI Equipment RU Service Unit, RU PSI Trk. Pumped 50 bbls 3% KCL flush tubing below packer.

RU Renegade Wire Line TIH with 1.875" Blank-in Plug set in "F" nipple. PSI to 1200# to set plug TOH with wire line, Ready Service Unit, J off O/O tool & extracted 211 Slim Hole 2 7/8 J-55 IPC Joints, RU Hydro Testing sheaves SDFD

11/10/15 TIH with Tbg. Hydro-Testers testing @ 4000# psi found hole 64 stands out, laid down bad joint, continued testing found scale build up next two Stands recovered sample and sent in for analysis. Replaced Joint with 2 7/8 IPC J-55 W/SHC, Circulated 3% Pkr. Fluid set back with redressed O/O tool set @ Pkr 6750', PSI to 1200# retrieved 1.875 BP from "F" nipple Test annulus to 600 PSI for 30 min. Good. Notified Richard Pena ready for MIT, MIT with District I scheduled for 11/12/15

MIT on 11/12/15 Passed / well placed back to injection.

Spud Date:

Rig Release Date:

I hereby certify that the information above is true and complete to the best of my knowledge and belief.

SIGNATURE David H. AlvaradoTITLE SENM District Fluids Mgr.DATE 11/19/15Type or print name David H. AlvaradoE-mail address: david.alvarado@basicenergyservices.comPHONE: 575. 746. 2072**For State Use Only**APPROVED BY: Bil StarnamahTITLE Staff ManagerDATE 11/24/15

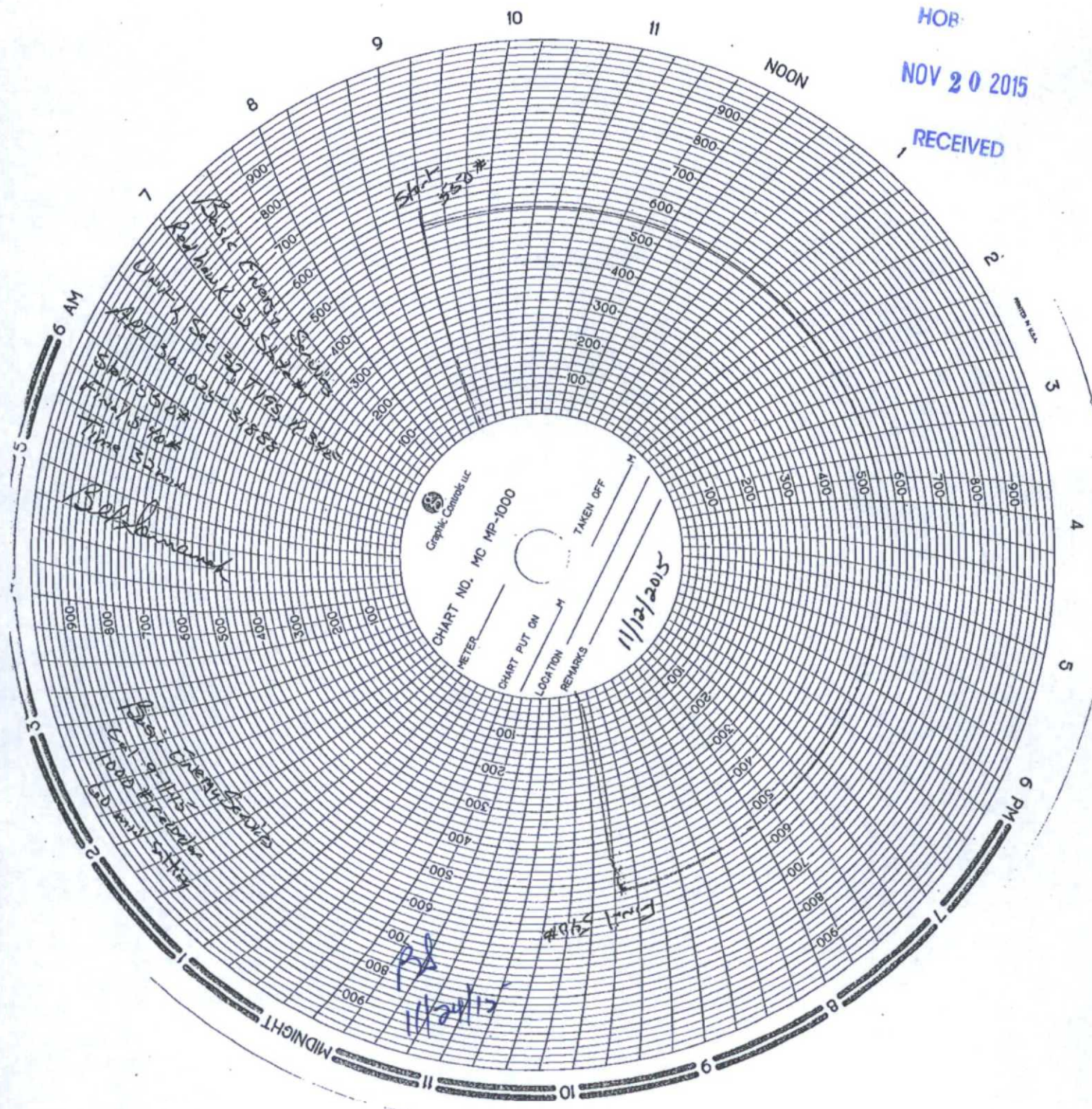
Conditions of Approval (if any):

NOV 30 2015

HOB

NOV 20 2015

RECEIVED



HOPR

NOV 20 2015

RECEIVED

Current

11/19/2015

Basic Energy Services LP

Red Hawk 32 State # 1

1980' FSL, 810' FWL, Unit (L), Sec 32, T19S, R34E Lea Co.

API # 30-025-31888

Surface Hole

Bit Size 17 1/2"

Inter. Hole

Bit Size 12 1/4"

Packer Set @ 6,750'

Packer 5 1/2" X 2 7/8" AS1-X(NP) (SS) 1.875" "F"

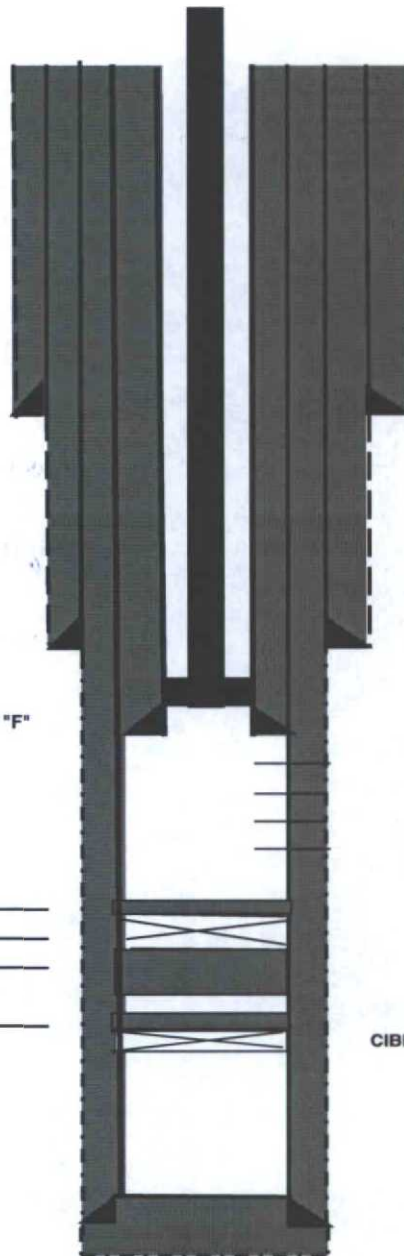
2 7/8" T-2 on/off tool SS top NP btm.

Cement Data:

Lead - _____

Tail - _____

Note - _____

Bit size 7 7/8"Tree Connection 2 7/8" J-55 PCT slim holeSurface Casing: 13 3/8" 54.5#Setting Depth @ 525' 500sx
Circulated to Surf
ExistingInterm. Casing: 8 5/8" 32#Setting Depth: 5,241' 3,250sx DV @ 3,485'
Circulated to Surf.
Existing

Perforation Intervals as Follows:

(6,800'-6,876'), (6,900'-6,986'), (7,000'-7,068')
(7,110'-7,218'), (7,226'-7,242'), (7,256'-7,277')
(7,286'-7,304'), (7,322'-7,344'), (7,376'-7,392')
(7,406'-7,484'), (7,504'-7,556') Net pay 556'

Set CIBP @ 7,800' + 25' cmt. on top

Existing plug @ (8,012' - 8315')

CIBP @ 10,050' + 35' Cmt.

PBTD: 13,568"Liner Csg.: 4 1/2" 11.6 # NewSetting Depth @ 6782'
Circulated to SurfProduction Csg.: 5 1/2" 17# ExistingSetting Depth @ 13,658' 1,850sx DV @ 9,6
Circulated to Surf
Existing