

COPY

DISTRICT I
1625 N. French Dr., Hobbs, NM 88240
Phone (575) 393-6161 Fax (575) 393-0720
DISTRICT II
811 S. First St., Artesia, NM 88210
Phone (575) 748-1283 Fax (575) 748-9720
DISTRICT III
1000 Rio Brazos Road, Aztec, NM 87410
Phone (505) 334-6178 Fax (505) 334-6170
DISTRICT IV
1220 S. St. Francis Dr., Santa Fe, NM 87505
Phone (505) 476-3460 Fax (505) 476-3462

State of New Mexico
Energy, Minerals & Natural Resources Department
OIL CONSERVATION DIVISION
1220 South St. Francis Dr.
Santa Fe, New Mexico 87505

Form C-102
Revised August 1, 2011
Submit one copy to appropriate
District Office

AMENDED REPORT

WELL LOCATION AND ACREAGE DEDICATION PLAT

| | | |
|-----------------------------------|---|--|
| API Number 30-025-42960 | Pool Code 97838 | Pool Name Jennings; Upper Bone Spring Shale |
| Property Code 305301 | Property Name MESA 8105 JV-P | Well Number 10H |
| OGRID No 260297 | Operator Name BTA OIL PRODUCERS, LLC | Elevation 3310' |

Surface Location

| UL or lot No | Section | Township | Range | Lot Idn | Feet from the | North/South line | Feet from the | East/West line | County |
|--------------|---------|----------|-------|---------|---------------|------------------|---------------|----------------|--------|
| C | 12 | 26-S | 32-E | | 330 | NORTH | 1400 | WEST | LEA |

Bottom Hole Location If Different From Surface

| UL or lot No | Section | Township | Range | Lot Idn | Feet from the | North/South line | Feet from the | East/West line | County |
|--------------|---------|----------|-------|---------|---------------|------------------|---------------|----------------|--------|
| M | 12 | 26-S | 32-E | | 230 | SOUTH | 1294 | WEST | LEA |

| Dedicated Acres | Joint or Infill | Consolidation Code | Order No |
|-----------------|-----------------|--------------------|----------|
| 160 | | | |

NO ALLOWABLE WILL BE ASSIGNED TO THIS COMPLETION UNTIL ALL INTERESTS HAVE BEEN CONSOLIDATED OR A NON-STANDARD UNIT HAS BEEN APPROVED BY THE DIVISION

| | | | |
|--|---|---|--|
| | GEODETIC COORDINATES NAD 27 NME SURFACE LOCATION Y= 387710.2 N X= 717263.3 E LAT.=32.063990° N LONG.=103.631992° W | GEODETIC COORDINATES NAD 83 NME SURFACE LOCATION Y= 387767.6 N X= 758450.2 E LAT.=32.064115° N LONG.=103.632463° W | OPERATOR CERTIFICATION I hereby certify that the information herein is true and complete to the best of my knowledge and belief, and that this organization either owns a working interest or unleased mineral interest in the land including the proposed bottom hole location or has a right to drill this well at this location pursuant to a contract with an owner of such mineral or working interest, or to a voluntary pooling agreement or a compulsory pooling order heretofore entered by the division. 4/21/2015 Signature Date Kayla McConnell Printed Name kmccconnell@btaoil.com E-mail Address |
| | CORNER COORDINATES TABLE NAD 27 NME A - Y= 388039.4 N, X= 717192.6 E B - Y= 388053.0 N, X= 718523.7 E C - Y= 382694.3 N, X= 717222.3 E D - Y= 382677.2 N, X= 715890.1 E | | |
| | CORNER COORDINATES TABLE NAD 83 NME A - Y= 388096.8 N, X= 758379.4 E B - Y= 388110.4 N, X= 759710.5 E C - Y= 382751.6 N, X= 758409.3 E D - Y= 382734.4 N, X= 757077.1 E | | |
| | BOTTOM HOLE LOCATION NAD 27 NME Y= 382923.8 N X= 717182.8 E LAT.=32.050834° N LONG.=103.632352° W | BOTTOM HOLE LOCATION NAD 83 NME Y= 382981.0 N X= 758369.8 E LAT.=32.050959° N LONG.=103.632822° W | |

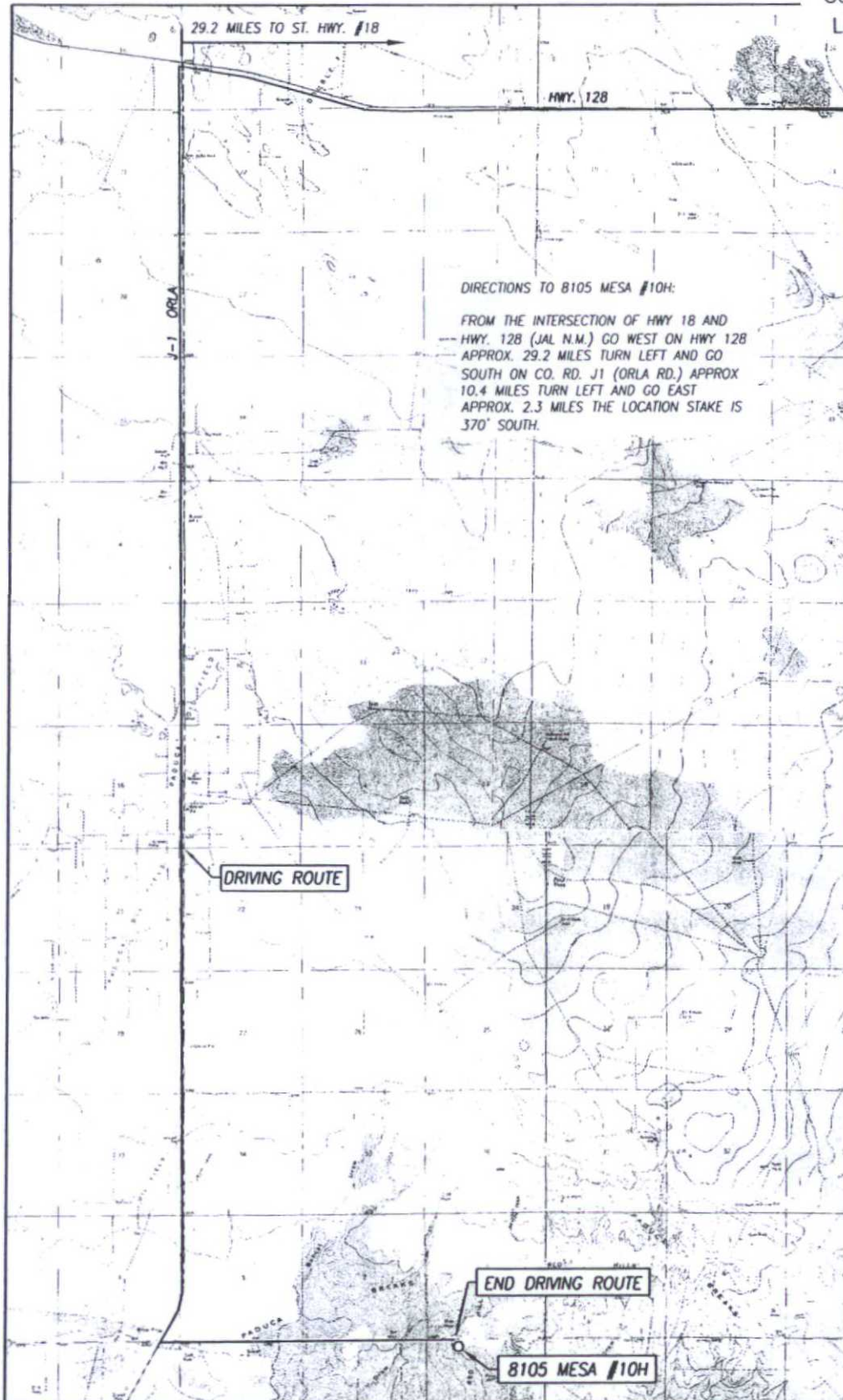
| | |
|--|--|
| SURVEYOR CERTIFICATION I hereby certify that the well location shown on this plat was plotted from field notes of actual surveys made by me or under my supervision, and that the same is true and correct to the best of my belief. OCTOBER 20, 2014 Date of Survey Ronald J. Eidson Surveyor Certificate Number 3239 Surveyor's Name Ronald J. Eidson 10641 3239 LSL JWSC W.O. 14.11.1100 | |
|--|--|

DEC 01 2015

COPY

LOCATION VERIFICATION MAP

Attachment to APD
BTA Oil Producers, LLC
Mesa 8105 JV-P #10H
Sec 12, T26S, R32E
Lea County, NM



SEC. 12 TWP. 26-S RGE. 32-E
COUNTY LEA STATE NEW MEXICO
DESCRIPTION 330' FNL & 1400' FWL
ELEVATION 3310'
OPERATOR BTA OIL PRODUCERS, LLC
LEASE 8105 MESA
U.S.G.S. TOPOGRAPHIC MAP
PADUCA BREAKS WEST, N.M. SURVEY N.M.P.M.

SCALE: 1" = 5280'

CONTOUR INTERVAL:
PADUCA BREAKS WEST, N.M. - 10'
PADUCA BREAKS NW, N.M. - 10'



PROVIDING SURVEYING SERVICES
SINCE 1946
JOHN WEST SURVEYING COMPANY
412 N. DAL PASO HOBBS, N.M. 88240
(575) 393-3117 www.jwsc.biz
TBPLS# 10021000

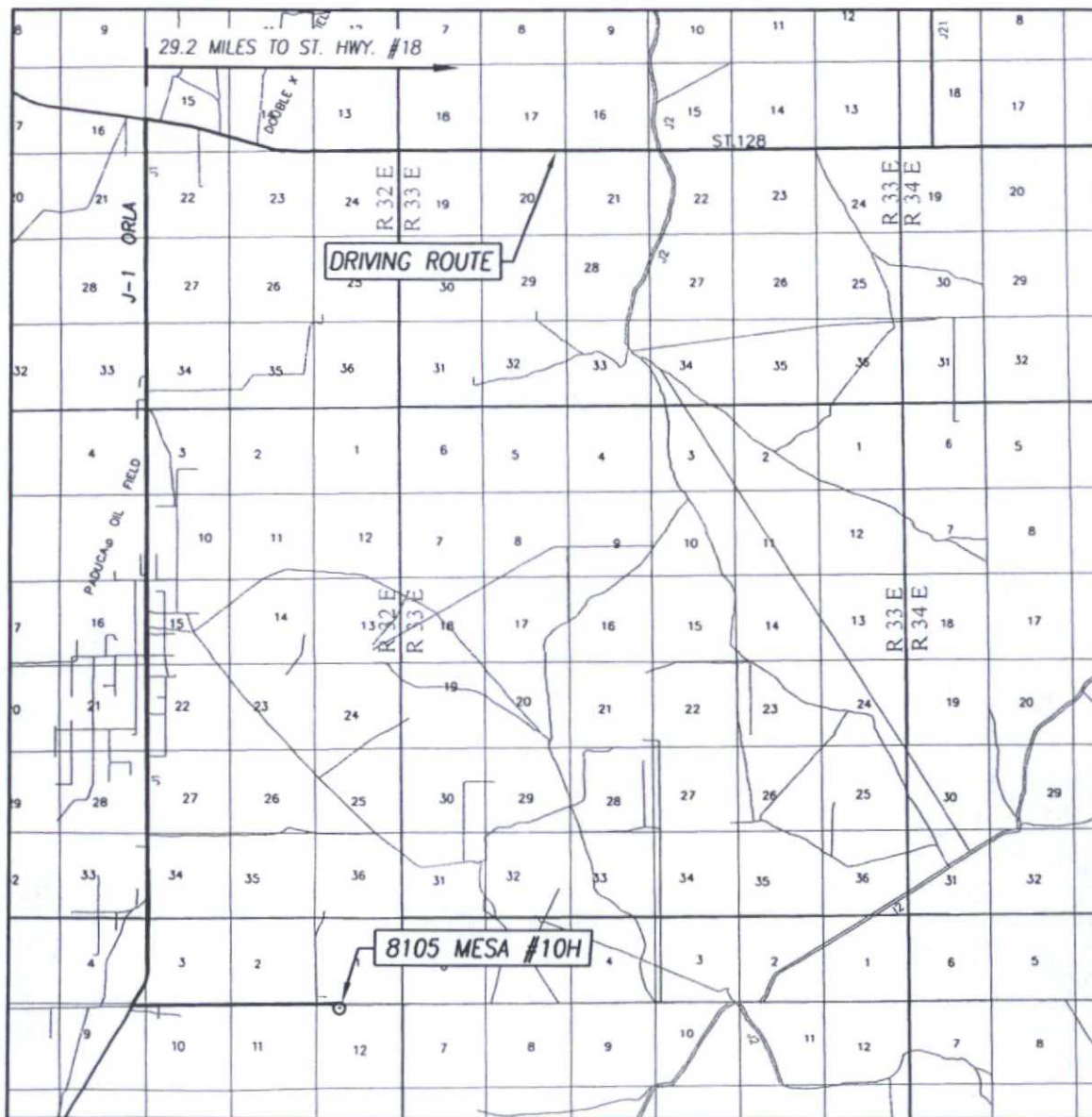
HOBBS OC

NOV 30 20

RECEIVED

VICINITY MAP

Attachment to APD
BTA Oil Producers, LLC
Mesa 8105 JV-P #10H
Sec 12, T26S, R32E
Lea County, NM



SCALE: 1" = 2 MILES

DRIVING ROUTE: SEE LOCATION VERIFICATION MAP

SEC. 12 TWP. 26-S RGE. 32-E

SURVEY N.M.P.M.

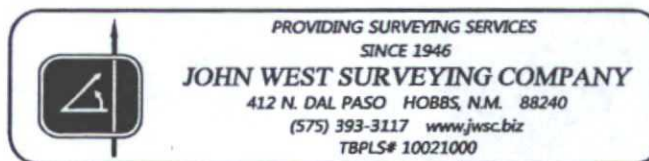
COUNTY LEA STATE NEW MEXICO

DESCRIPTION 330' FNL & 1400' FWL

ELEVATION 3310'

OPERATOR BTA OIL PRODUCERS, LLC

LEASE 8105 MESA

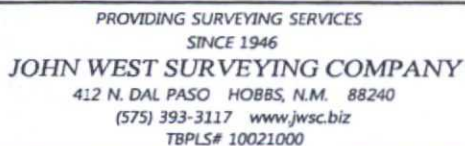


BTA Oil Producers, LLC
Mesa 8105 JV-P #10H
Location Plat – Interim Reclamation
Sec 12, T26S, R32E
Lea County, NM



BTA OIL PRODUCERS, LLC

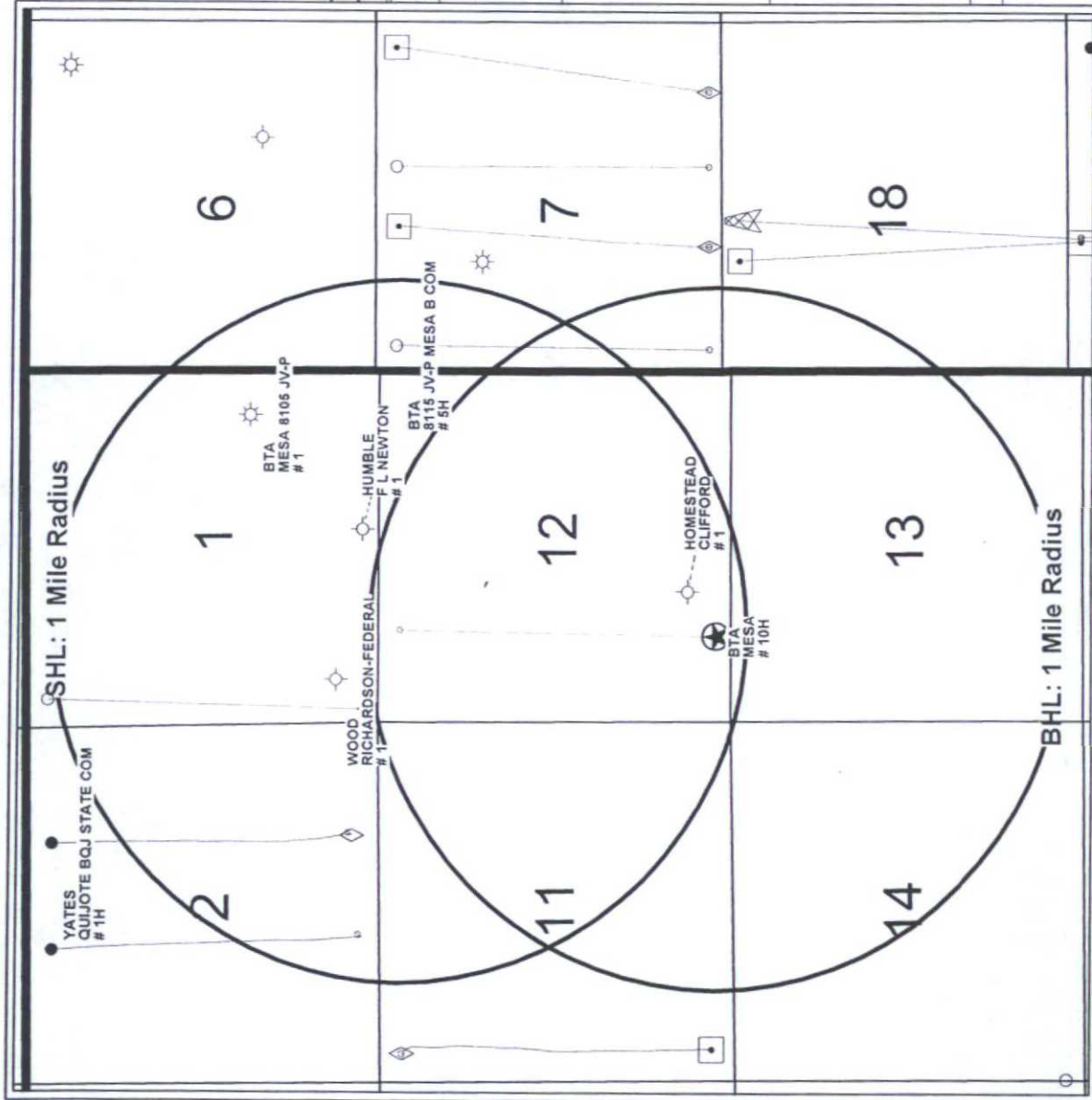
8105 MESA #10H WELL
LOCATED 330 FEET FROM THE NORTH LINE
AND 1400 FEET FROM THE WEST LINE OF SECTION 12,
TOWNSHIP 26 SOUTH, RANGE 32 EAST, N.M.P.M.,
LEA COUNTY, NEW MEXICO



| | | | | | |
|-----------------------|--|--------------------|--|---------------|--|
| Survey Date: 10/20/14 | | CAD Date: 11/18/14 | | Drawn By: LSL | |
| W.O. No.: 14111100 | | Rev: . | | Rel. W.O.: . | |
| | | | | Sheet 1 of 1 | |

COPY

BTA Oil Producers, LLC
 Mesa 8105 JV-P #10H
1 Mile Radius Map
 Sec 12, T26S, R32E
 Lea County, NM



| | |
|--|--|
| BTA OIL PRODUCERS, LLC | 8105 JV-P Mesa #10H - 1 Mile Radius Map |
| SHL: 330'FNL & 1400'FWL Sec.12,T26S,R32E BHL: 230'FSL & 1294'FWL Sec.12,T26S,R32E | Lea Co. New Mexico |
| WELL SYMBOLS Proposed Location Location Only Drilling Well Drilled, Waiting on Completion Oil Well Gas Well Dry Hole Pilot Hole | REMARKS 8105 JV-P Mesa #10H Bottom Hole Location Highlighted in Yellow Only Wells Inside a Mile Radius of Surface & Bottom Hole Locations Labeled |
| By: JHB | |

8105 Mesa Plan of Development Proposed Flowlines

BTA Oil Producers, LLC
Mesa 8105 JV-P #10H
Proposed Flowlines Map
Sec 12, T26S, R32E
Lea County, NM

Approximate Distance
Well to Central Tank Battery Per Section

Sec. 11 CTB
4H ~ 1,215'
5H/21H ~ 200'
6H ~ 1,170'
7H ~ 1,440'
8H/22H ~ 3,909'
CTB to SWD #1W ~ 1,308'

Sec. 12 CTB
9H ~ 1,960'
10H/15H ~ 1,910'
23H/26H ~ 2,600'
24H/27H ~ 200'
25H/19H ~ 2,909'
CTB to SWD #1W ~ 8,080'

Sec. 1 CTB
11H/16H ~ 740'
12H/17H ~ 1,529'
13H/18H ~ 2,272'
14H/28H ~ 2,927'
TB to SWD #1W ~ 7,475'

LEGEND:

- Well Pad
- Central Tank Battery (CTB)
- Frac Pond
- Flowline
- Water Pipeline

SWD #1W

11

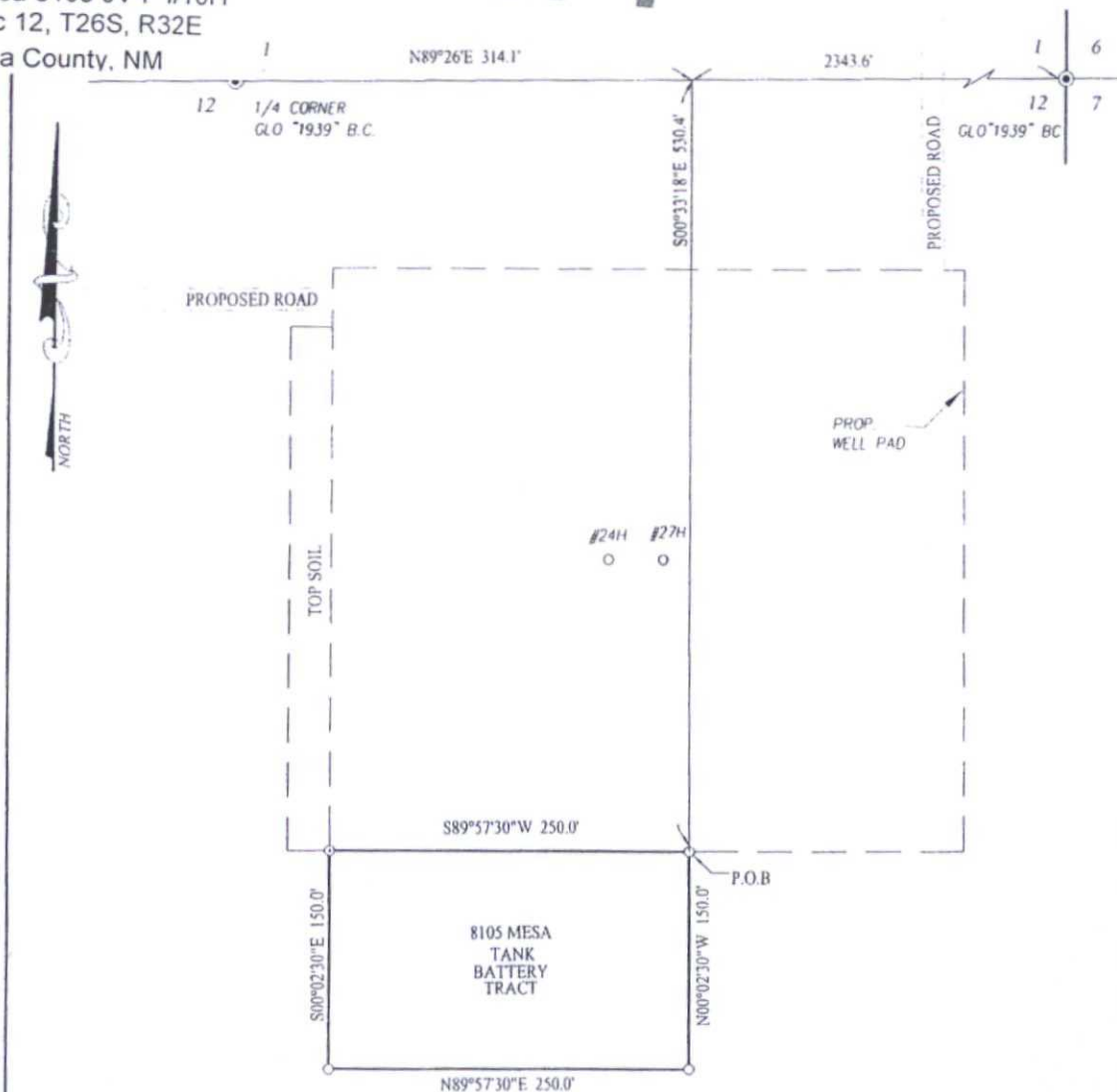
12

#2H #20H #4H #6H #8H #9H #23H #11H #12H #14H #25H
#27H #26H #15H #16H #17H #18H #28H
#19H #24H #13H #10H #7H #22H #21H #5H

COPY

Attachment to APD
BTA Oil Producers, LLC
Mesa 8105 JV-P #10H
Sec 12, T26S, R32E
Lea County, NM

COPY



DESCRIPTION:

A TRACT SITUATED IN THE NORTHEAST QUARTER
OF SECTION 12, TOWNSHIP 26 SOUTH, RANGE 32 EAST, N.M.P.M.,
LEA COUNTY, NEW MEXICO AND BEING MORE PARTICULARLY DESCRIBED AS
FOLLOWS:

BEGINNING AT THE NORTHEAST CORNER WHICH LIES N89°26'42\"/>

NOTE

BEARINGS SHOWN HEREON ARE MERCATOR GRID AND CONFORM TO
THE NEW MEXICO COORDINATE SYSTEM "NEW MEXICO EAST ZONE"
NORTH AMERICAN DATUM 1983. DISTANCES ARE SURFACE VALUES.

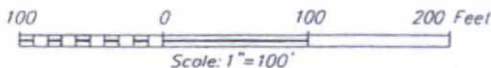
I, RONALD J. EIDSON, NEW MEXICO PROFESSIONAL SURVEYOR No. 3239,
DO HEREBY CERTIFY THAT THIS SURVEY PLAN AND THE ACTUAL SURVEY
ON THE GROUND UPON WHICH IT IS BASED WERE PERFORMED BY ME OR
UNDER MY DIRECT SUPERVISION. I AM RESPONSIBLE FOR THIS
SURVEY; THAT THIS SURVEY MEETS THE MINIMUM STANDARDS FOR
SURVEYING IN NEW MEXICO; AND THAT IT IS TRUE AND CORRECT TO
THE BEST OF MY KNOWLEDGE AND BELIEF.

RONALD J. EIDSON

DATE: _____

LEGEND

● DENOTES FOUND CORNER AS NOTED



BTA OIL PRODUCERS, LLC

SURVEY FOR A TANK BATTERY TRACT
SITUATED IN THE NE/4 OF SECTION 12,
TOWNSHIP 26 SOUTH, RANGE 32 EAST, N.M.P.M.
LEA COUNTY, NEW MEXICO

Survey Date: 10/20/14

CAD Date: 11/19/14

Drawn By: LSL

W.O. No.: 14111114

Rev.:

Ref. W.O.:

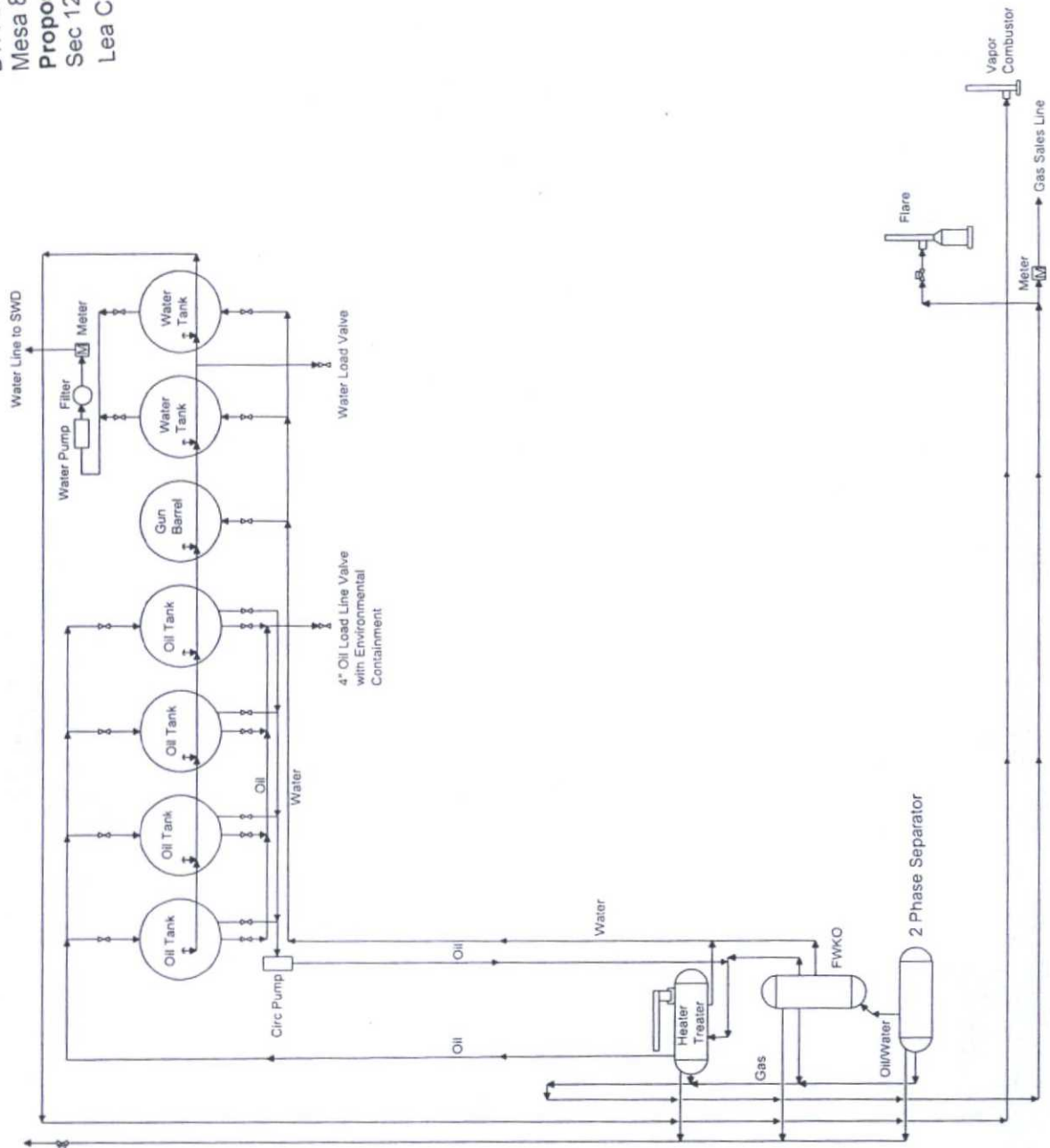
Sheet 1 of 1

© DRAFTING

PROVIDING SURVEYING SERVICES
SINCE 1946
JOHN WEST SURVEYING COMPANY
412 N. DAL PASO HOBBS, N.M. 88240
(575) 393-3117 www.jwsc.biz
TBPLSH 10021000

COPY

BTA Oil Producers, LLC
Mesa 8105 JV-P #10H
Proposed Central Tank Battery
Sec 12, T26S, R32E
Lea County, NM



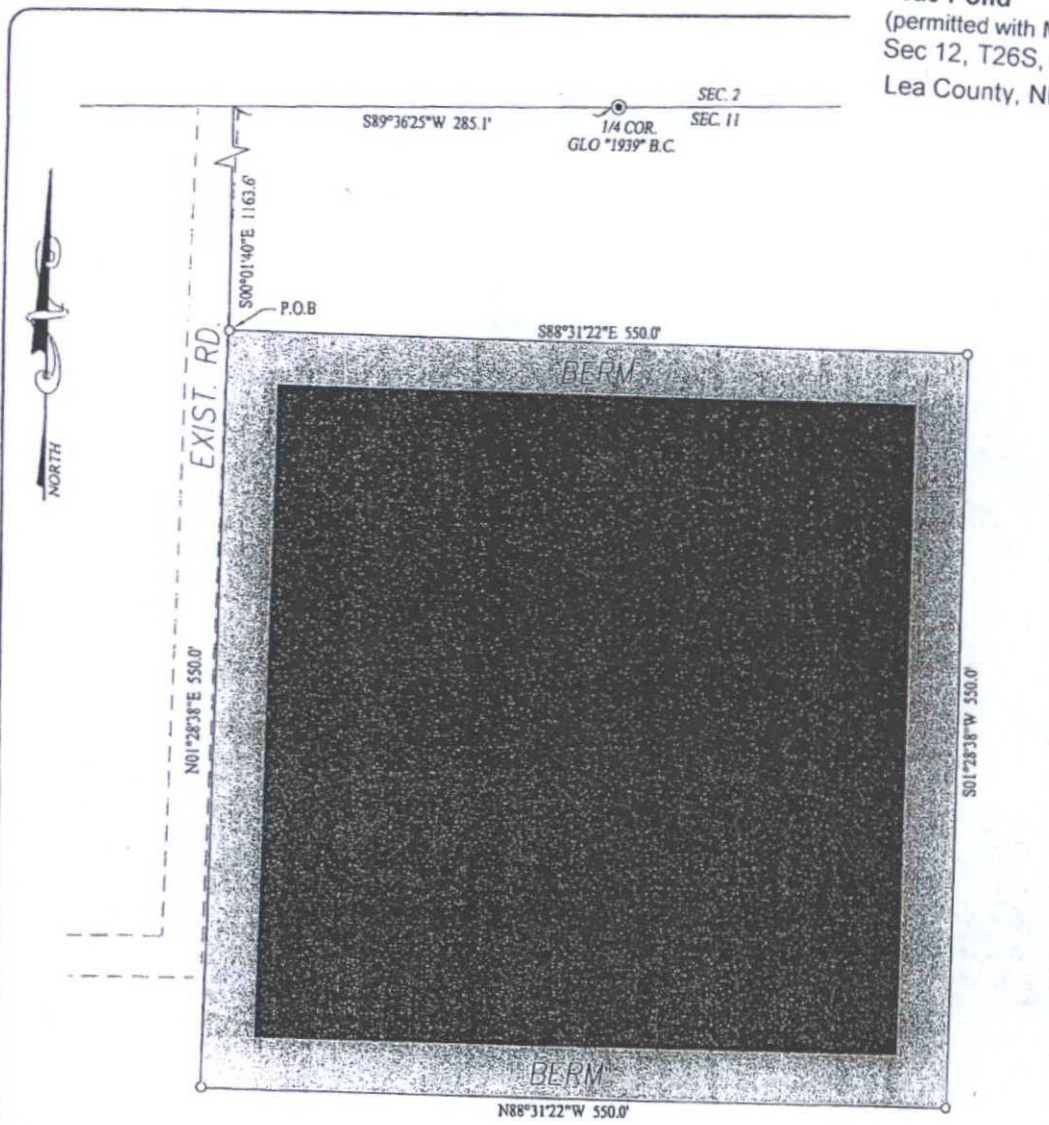
NOT TO SCALE

BTA Oil Producers, LLC

Mesa 8105 JV-P
-Proposed-
Central Tank Battery
Section 12, T26S-R32E
Lea County, NM

COPY

BTA Oil Producers, LLC
Mesa 8105 JV-P #10H
Frac Pond
(permitted with Mesa 8105 JV-P #4H)
Sec 12, T26S, R32E
Lea County, NM



DESCRIPTION:

A TRACT FOR A FRAC POND SITUATED IN THE NORTHWEST QUARTER OF SECTION 11, TOWNSHIP 26 SOUTH, RANGE 32 EAST, N.M.P.M., EDDY COUNTY, NEW MEXICO AND BEING MORE PARTICULARLY DESCRIBED AS FOLLOWS:

BEGINNING AT THE NORTHWEST CORNER WHICH LIES S89°36'25"W 285.1 FEET AND S00°01'40"E 1163.6 FEET FROM THE NORTH 1/4 CORNER; THEN S88°31'22"E 550.0 FEET; THEN S01°28'38"W 550.0 FEET; THEN N88°31'22"W 550.0 FEET; THEN N01°28'38"E 550.0 FEET TO THE POINT OF BEGINNING AND CONTAINING 6.94 ACRES MORE OR LESS.

NOTE

BEARINGS SHOWN HEREON ARE MERCATOR GRID AND CONFORM TO THE NEW MEXICO COORDINATE SYSTEM "NEW MEXICO EAST ZONE" NORTH AMERICAN DATUM 1983. DISTANCES ARE SURFACE VALUES.

I, RONALD J. EIDSON, NEW MEXICO PROFESSIONAL SURVEYOR No. 3239, DO HEREBY CERTIFY THAT THIS SURVEY PLAT AND THE ACTUAL SURVEY ON THE GROUND UPON WHICH IT IS BASED WERE PERFORMED BY ME OR UNDER MY DIRECT SUPERVISION THAT I AM RESPONSIBLE FOR THIS SURVEY; THAT THIS SURVEY MEETS THE MINIMUM STANDARDS FOR SURVEYING IN NEW MEXICO; AND THAT THIS IS TRUE AND CORRECT TO THE BEST OF MY KNOWLEDGE AND BELIEF.

RONALD J. EIDSON

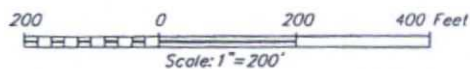
DATE: _____



PROVIDING SURVEYING SERVICES
SINCE 1946
JOHN WEST SURVEYING COMPANY
412 N. DAL PASO HOBBS, N.M. 88240
(575) 393-3117 www.jwsurvey.com
TBPLS# 10021000

LEGEND

⊙ DENOTES FOUND CORNER AS NOTED



BTA OIL PRODUCERS, LLC

SURVEY FOR A FRAC POND TRACT
SITUATED IN THE NW/4 OF SECTION 11,
TOWNSHIP 26 SOUTH, RANGE 32 EAST, N.M.P.M.
EDDY COUNTY, NEW MEXICO

| | | |
|-----------------------|--------------------|---------------|
| Survey Date: 10/16/14 | CAD Date: 11/10/14 | Drawn By: LSL |
| W.O. No.: 14111127 | Rev.: | Rel. W.O.: |

Sheet 1 of 1