

DISTRICT I
1625 N. French Dr., Hobbs, NM 88240
Phone (575) 393-6161 Fax (575) 393-0720

DISTRICT II
811 S. First St., Artesia, NM 88210
Phone (575) 748-1283 Fax (575) 748-9720

DISTRICT III
1000 Rio Hrazos Road, Aztec, NM 87410
Phone (505) 334-6178 Fax (505) 334-6170

DISTRICT IV
1220 S. St. Francis Dr., Santa Fe, NM 87505
Phone (505) 476-3460 Fax (505) 476-3462

State of New Mexico
Energy, Minerals & Natural Resources Department
OIL CONSERVATION DIVISION
1220 South St. Francis Dr.
Santa Fe, New Mexico 87505

COPY

Form C-102

Revised August 1, 2011

Submit one copy to appropriate
District Office

HOBBS OCD

NOV 30 2015

AMENDED REPORT

WELL LOCATION AND ACREAGE DEDICATION PLAT

API Number 30-025-42961	Pool Code 97838	Pool Name Jennings; Upper Bone Spring Shale
Property Code 305301	Property Name MESA 8105 JV-P	Well Number 15H
OGRID No 260297	Operator Name BTA OIL PRODUCERS, LLC	Elevation 3311'

Surface Location

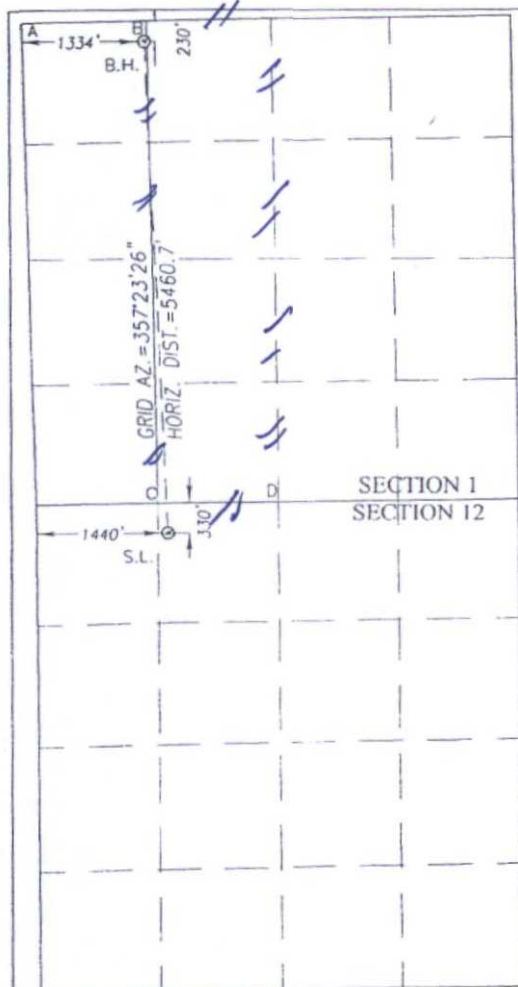
UL or lot No.	Section	Township	Range	Lot Idn	Feet from the	North/South line	Feet from the	East/West line	County
C	12	26-S	32-E		330	NORTH	1440	WEST	LEA

Bottom Hole Location If Different From Surface

UL or lot No.	Section	Township	Range	Lot Idn	Feet from the	North/South line	Feet from the	East/West line	County
DC	1	26-S	32-E		230	NORTH	1334	WEST	LEA

Dedicated Acres	Joint or Infill	Consolidation Code	Order No.
160			

NO ALLOWABLE WILL BE ASSIGNED TO THIS COMPLETION UNTIL ALL INTERESTS HAVE BEEN CONSOLIDATED OR A NON-STANDARD UNIT HAS BEEN APPROVED BY THE DIVISION



GEODETIC COORDINATES GEODETIC COORDINATES
NAD 27 NME NAD 83 NME

BOTTOM HOLE LOCATION BOTTOM HOLE LOCATION
Y= 393164.4 N Y= 393221.9 N
X= 717054.9 E X= 758241.5 E

LAT.=32.078987° N LAT.=32.079111° N
LONG.=103.632550° W LONG.=103.633022° W

SURFACE LOCATION SURFACE LOCATION
Y= 387710.6 N Y= 387768.0 N
X= 717303.3 E X= 758490.1 E

LAT.=32.063990° N LAT.=32.064115° N
LONG.=103.631863° W LONG.=103.632334° W

CORNER COORDINATES TABLE
NAD 27 NME

A - Y= 393374.5 N, X= 715714.9 E
B - Y= 393394.8 N, X= 717081.4 E
C - Y= 388039.4 N, X= 717192.6 E
D - Y= 388053.0 N, X= 718523.7 E

CORNER COORDINATES TABLE
NAD 83 NME

A - Y= 393432.1 N, X= 756901.4 E
B - Y= 393452.3 N, X= 758267.9 E
C - Y= 388096.8 N, X= 758379.4 E
D - Y= 388110.5 N, X= 759710.5 E

OPERATOR CERTIFICATION

I hereby certify that the information herein is true and complete to the best of my knowledge and belief, and that this organization either owns a working interest or unleased mineral interest in the land including the proposed bottom hole location or has a right to drill this well at this location pursuant to a contract with an owner of such mineral or working interest, or to a voluntary pooling agreement or a compulsory pooling order heretofore entered by the division.

Kayla McConnell 4/21/2015
Signature Date

Kayla McConnell
Printed Name

kmccConnell@btaoil.com
E-mail Address

SURVEYOR CERTIFICATION

I hereby certify that the well location shown on this plat was plotted from field notes of actual surveys made by me or under my supervision, and that the same is true and correct to the best of my belief.

OCTOBER 20, 2014

Date of Survey
Signature & Seal of Professional Surveyor:

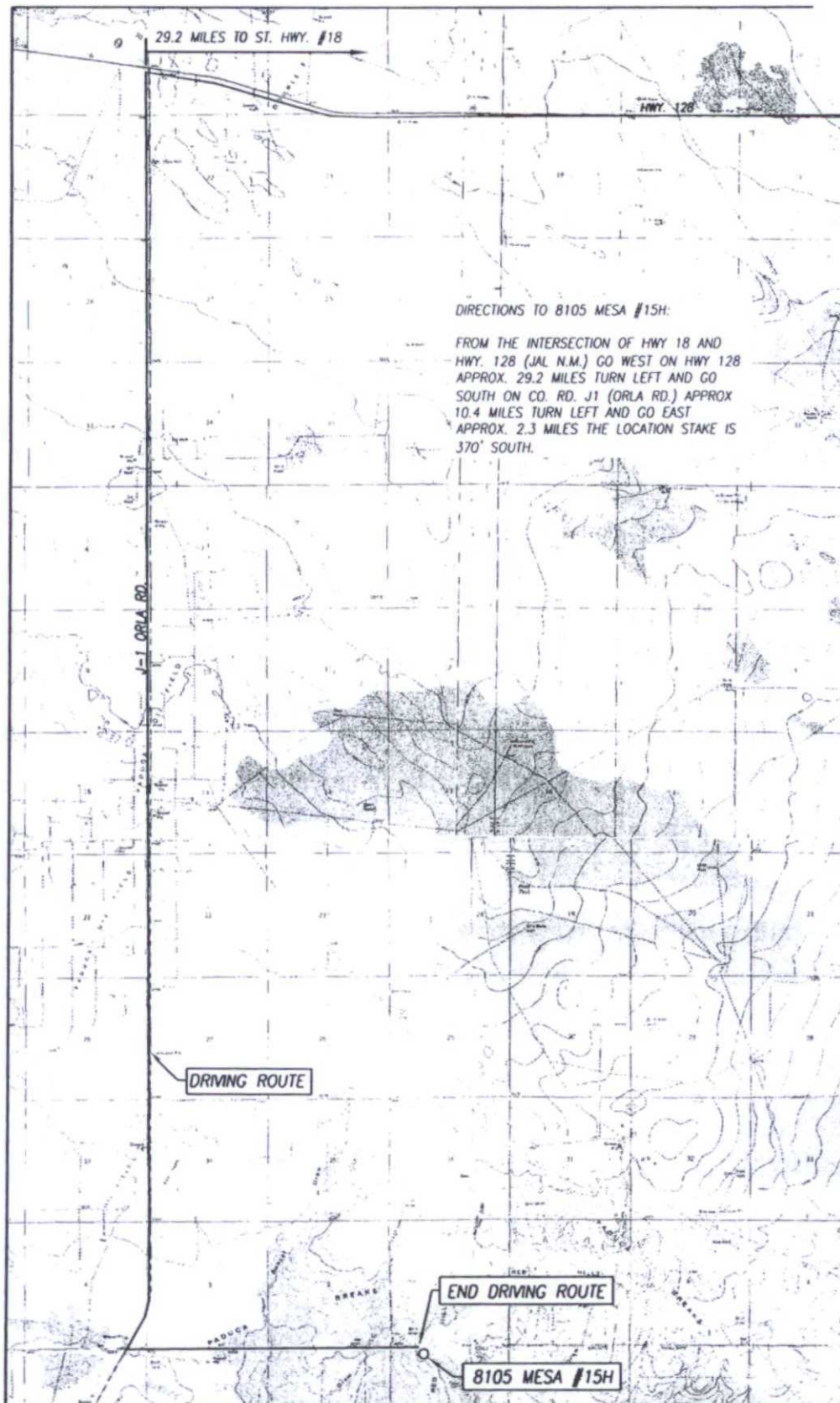
Ronald L. Eidson 10/20/2014
Certificate Number Gary G. Eidson 12641
Ronald L. Eidson 3239
LSL NWSC W.O. 14 11.1101

DEC 01 2015

COPY

LOCATION VERIFICATION MAP

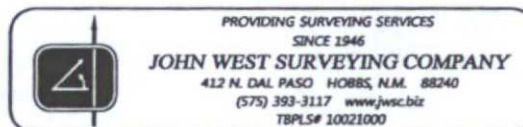
Attachment to APD
BTA Oil Producers, LLC
Mesa 8105 JV-P #15H
Sec 12, T26S, R32E
Lea Countv. NM



SEC. 12 TWP. 26-S. RGE. 32-E
COUNTY LEA STATE NEW MEXICO
DESCRIPTION 330' FNL & 1440' FWL
ELEVATION 3311'
OPERATOR BTA OIL PRODUCERS, LLC
LEASE 8105 MESA
U.S.G.S. TOPOGRAPHIC MAP
PADUCA BREAKS WEST, N.M. SURVEY N.M.P.M.

SCALE: 1" = 2000'

CONTOUR INTERVAL:
PADUCA BREAKS WEST, N.M. - 10'
PADUCA BREAKS NW, N.M. - 10'



HOBBS OCD

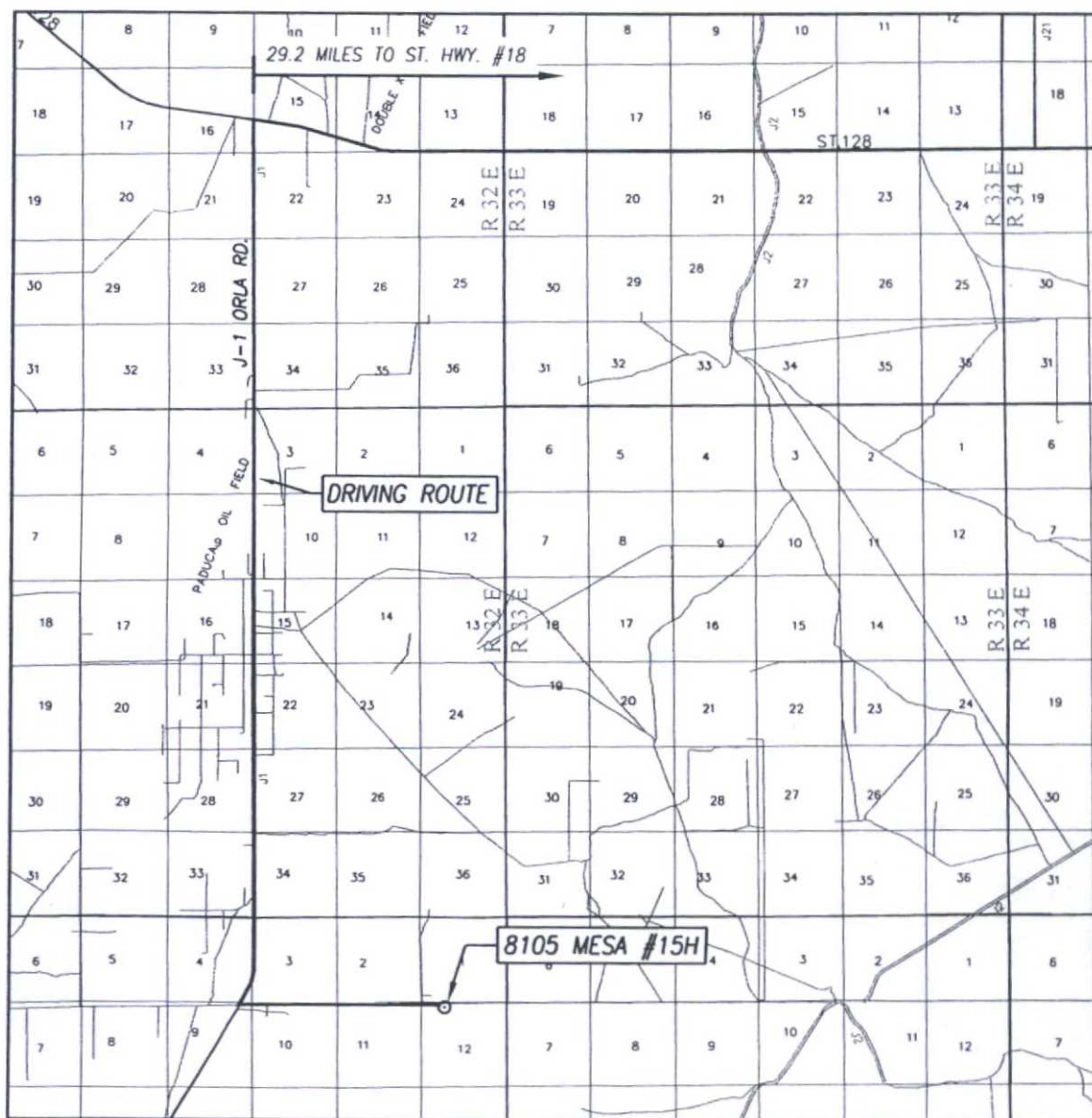
NOV 30 2015

RECEIVED

COPY

VICINITY MAP

Attachment to APD
BTA Oil Producers, LLC
Mesa 8105 JV-P #15H
Sec 12, T26S, R32E
Lea Countv. NM



SCALE: 1" = 2 MILES
DRIVING ROUTE: SEE LOCATION VERIFICATION MAP

SEC. 12 TWP. 26-S RGE. 32-E

SURVEY N.M.P.M.

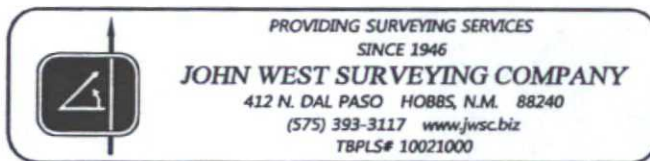
COUNTY LEA STATE NEW MEXICO

DESCRIPTION 330' FNL & 1440' FWL

ELEVATION 3311'

OPERATOR BTA OIL PRODUCERS, LLC

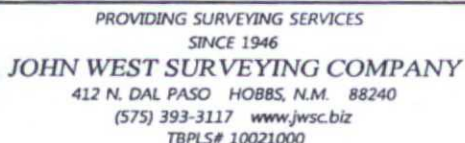
LEASE 8105 MESA



BTA Oil Producers, LLC
Mesa 8105 JV-P #15H
Location Plat – Interim Reclamation
Sec 12, T26S, R32E
Lea County, NM



FROM THE INTERSECTION OF HWY 18 AND HWY. 128 (JAL N.M.)
GO WEST ON HWY 128 APPROX. 29.2 MILES TURN LEFT AND
GO SOUTH ON CO. RD. J1 (ORLA RD.) APPROX 10.4 MILES
TURN LEFT AND GO EAST APPROX. 2.3 MILES THE LOCATION
STAKE IS 370' SOUTH.



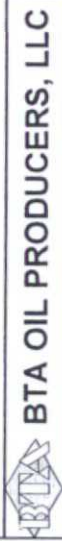
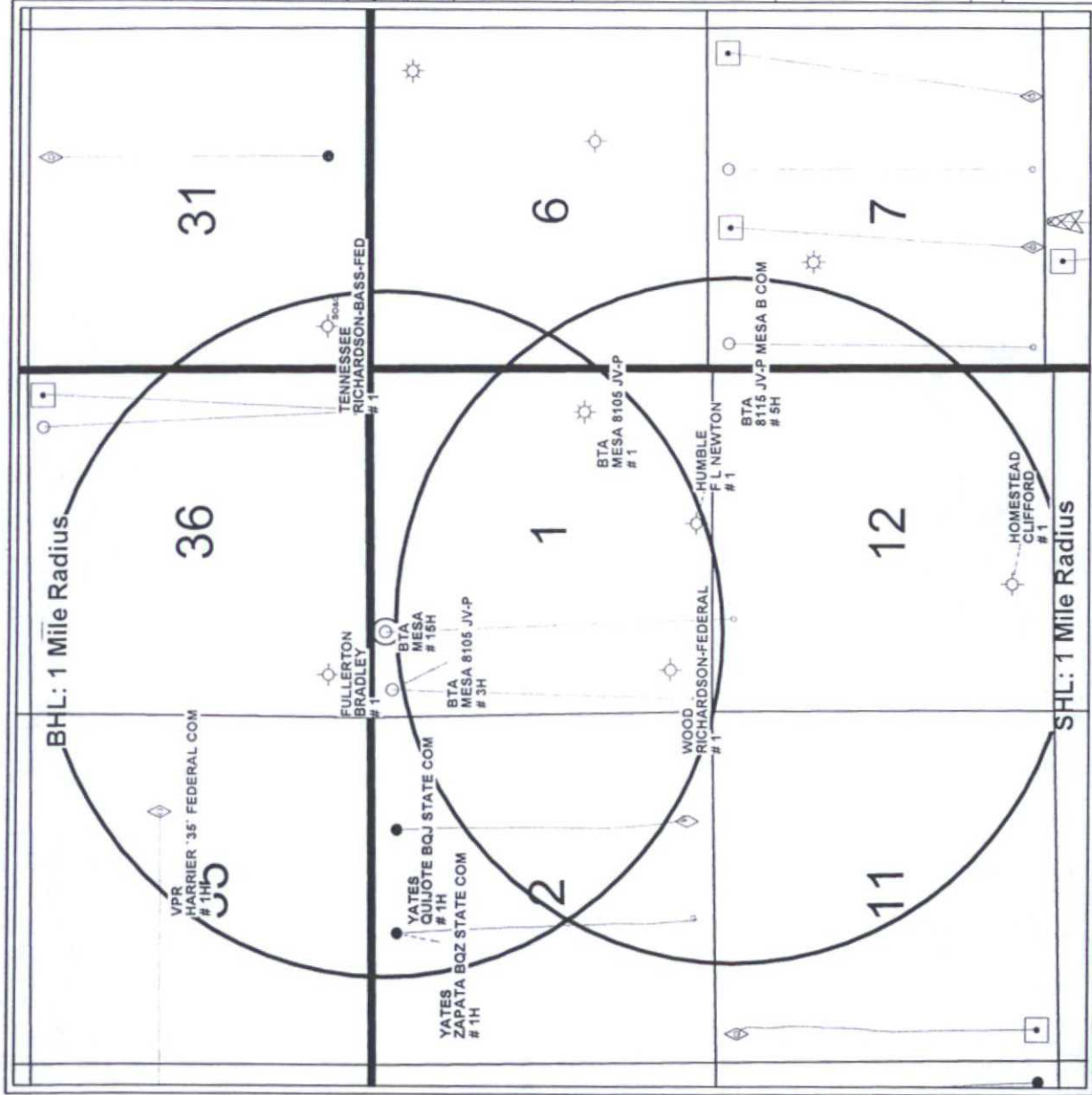
BTA OIL PRODUCERS, LLC

8105 MESA #15H WELL
LOCATED 330 FEET FROM THE NORTH LINE
AND 1440 FEET FROM THE WEST LINE OF SECTION 12,
TOWNSHIP 26 SOUTH, RANGE 32 EAST, N.M.P.M.,
LEA COUNTY, NEW MEXICO

Survey Date: 10/20/14		CAD Date: 11/18/14		Drawn By: LSL	
W.O. No.: 14111101		Rev: 4/21/15		Rel. W.O.: Sheet 1 of 1	

COPY

BTA Oil Producers, LLC
Mesa 8105 JV-P #15H
1 Mile Radius Map
Sec 12, T26S, R32E
Lea County, NM



8105 JV-P Mesa #15H - 1 Mile Radius Map

SHL: 330'FNL & 1440'FWL Sec.12, T26S, R32E

BHL: 230'FNL & 1334'FWL Sec.1, T26S, R32E

Lea Co. New Mexico

WELL SYMBOLS

- Location Only
- Drilling Well
- Drilled, Waiting on Completion
- Oil Well
- Gas Well
- Dry Hole
- Dry Hole With Oil & Gas Show
- Pilot Hole

REMARKS

8105 JV-P Mesa #15H Bottom Hole Location
Highlighted in Yellow

Only Wells Inside a Mile Radius of Surface &
Bottom Hole Locations Labeled

By: JHB



8105 Mesa Plan of Development Proposed Flowlines

BTA Oil Producers, LLC
Mesa 8105 JV-P #15H
Proposed Flowlines Map
Sec 12, T26S, R32E
Lea County, NM

Approximate Distance
Well to Central Tank Battery Per Section

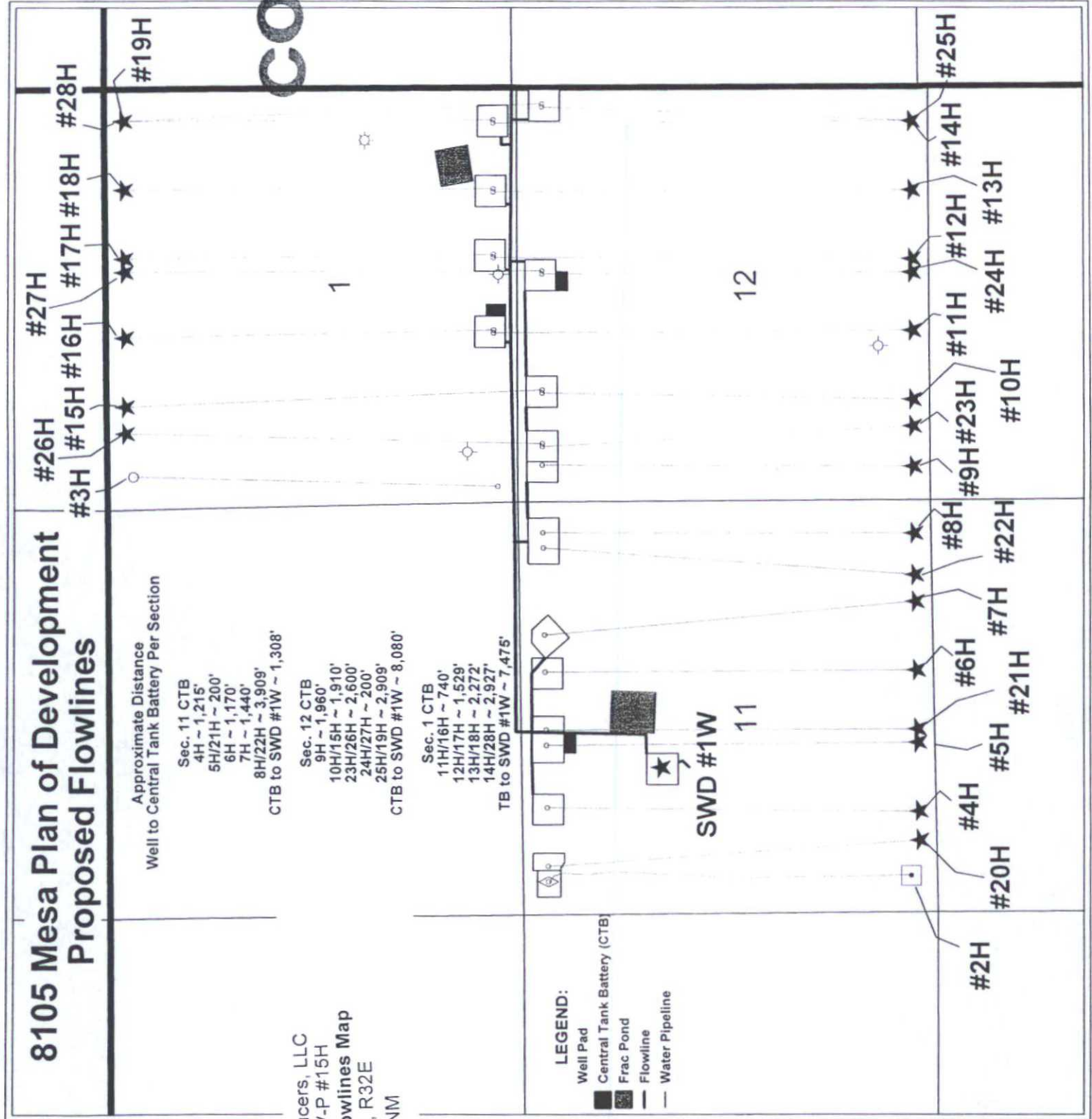
Sec. 11 CTB
4H ~ 1,215'
5H/21H ~ 200'
6H ~ 1,170'
7H ~ 1,440'
8H/22H ~ 3,909'
CTB to SWD #1W ~ 1,308'

Sec. 12 CTB
9H ~ 1,960'
10H/15H ~ 1,910'
23H/26H ~ 2,600'
24H/27H ~ 200'
25H/19H ~ 2,909'
CTB to SWD #1W ~ 8,080'

Sec. 1 CTB
11H/16H ~ 740'
12H/17H ~ 1,529'
13H/18H ~ 2,272'
14H/28H ~ 2,927'
TB to SWD #1W ~ 7,475'

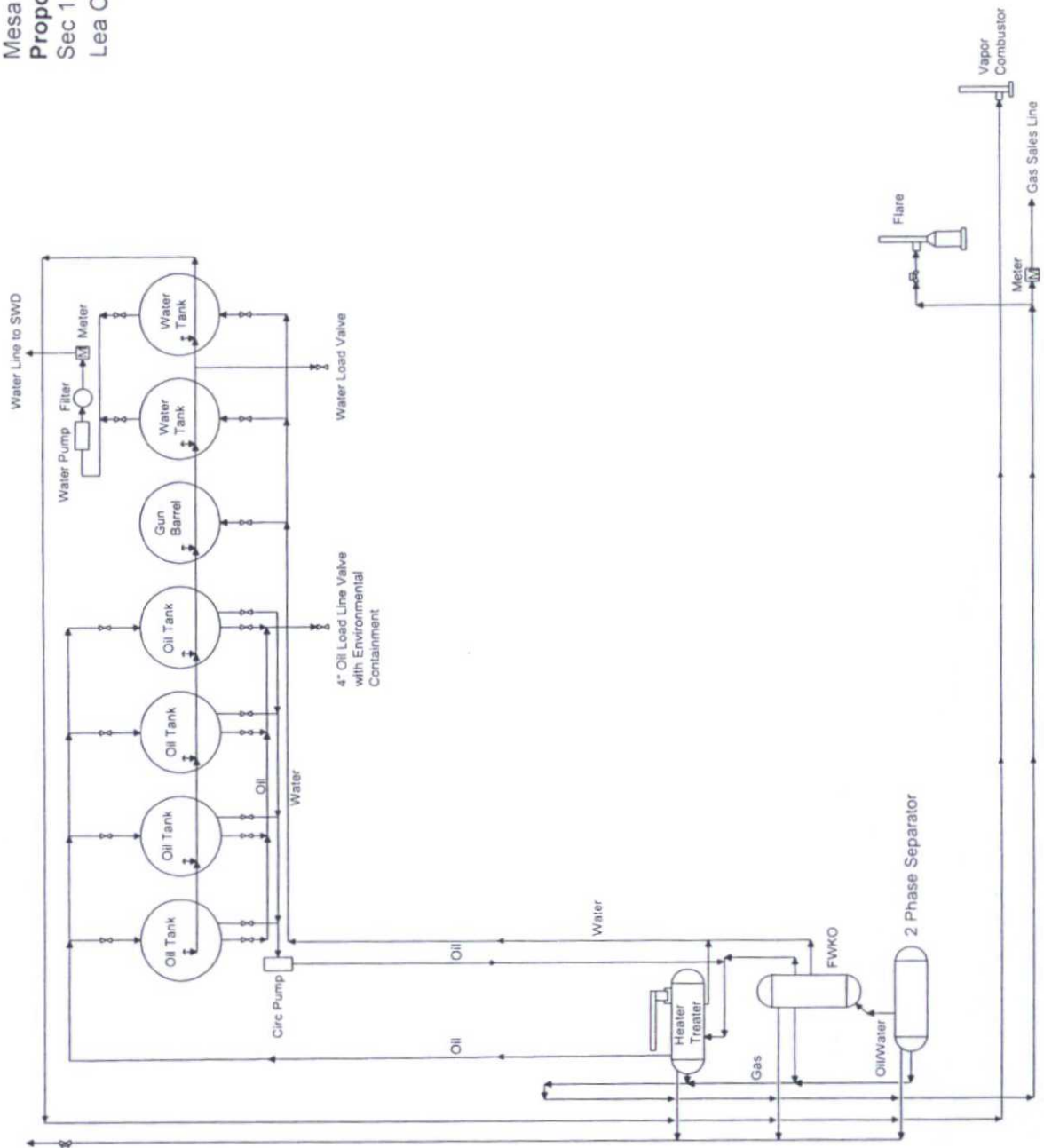
LEGEND:

- Well Pad
- Central Tank Battery (CTB)
- Frac Pond
- Flowline
- Water Pipeline



COPY

BTA Oil Producers, LLC
Mesa 8105 JV-P #15H
Proposed Central Tank Battery
Sec 12, T26S, R32E
Lea County, NM



BTA Oil Producers, LLC

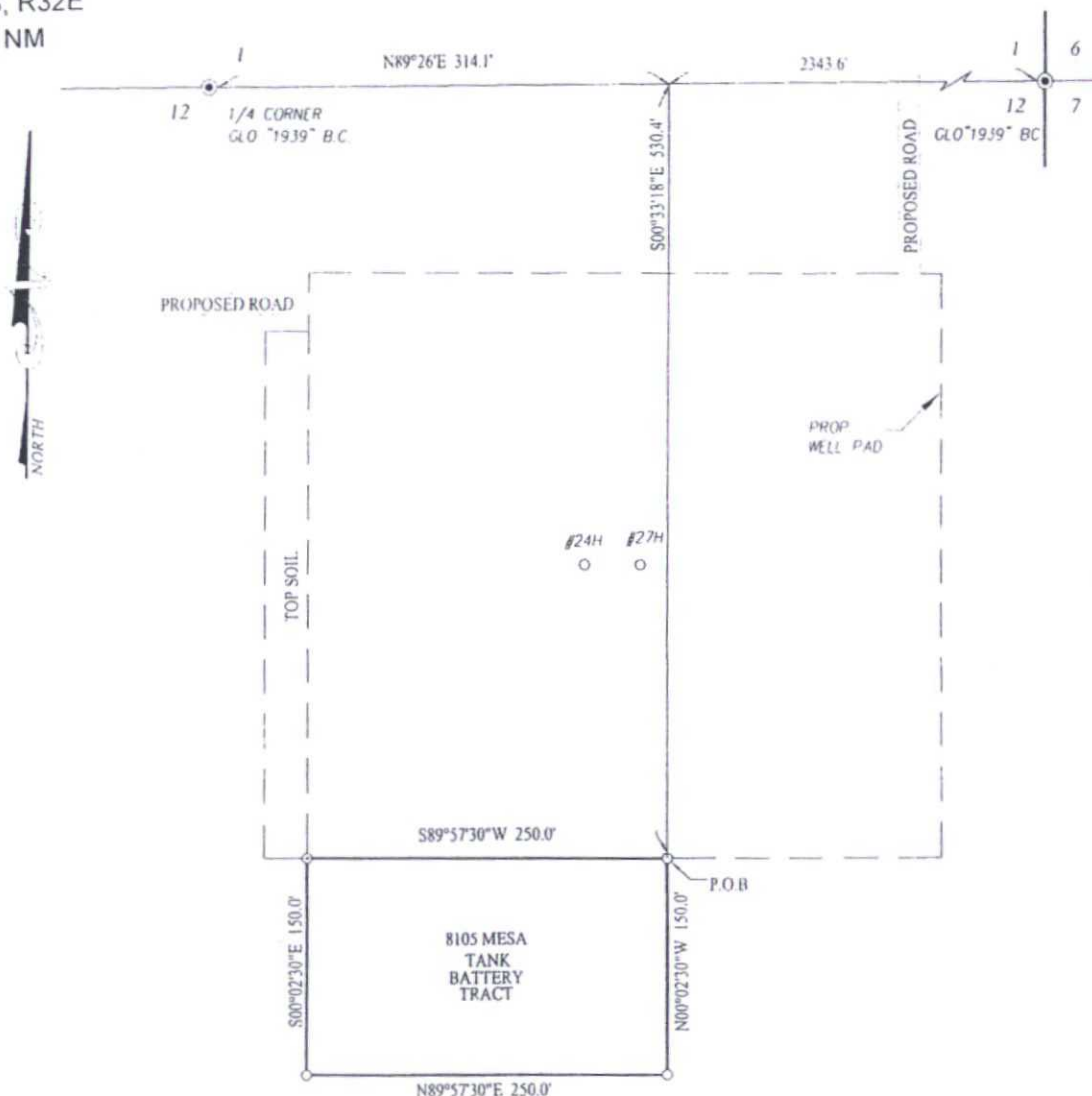
Mesa 8105 JV-P

-Proposed-

Central Tank Battery

Section 12, T26S-R32E

COPY



DESCRIPTION:

A TRACT SITUATED IN THE NORTHEAST QUARTER OF SECTION 12, TOWNSHIP 26 SOUTH, RANGE 32 EAST, N.M.P.M., LEA COUNTY, NEW MEXICO AND BEING MORE PARTICULARLY DESCRIBED AS FOLLOWS:

BEGINNING AT THE NORTHEAST CORNER WHICH LIES N89°26'42\"/>

NOTE

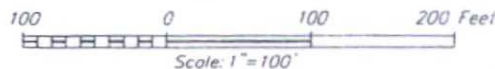
BEARINGS SHOWN HEREON ARE MERCATOR GRID AND CONFORM TO THE NEW MEXICO COORDINATE SYSTEM "NEW MEXICO EAST ZONE" NORTH AMERICAN DATUM 1983. DISTANCES ARE SURFACE VALUES.

I, RONALD J. EIDSON, NEW MEXICO PROFESSIONAL SURVEYOR No. 3239, DO HEREBY CERTIFY THAT THIS SURVEY WAS PERFORMED BY ME OR UNDER MY DIRECT SUPERVISION, THAT I AM RESPONSIBLE FOR THIS SURVEY, THAT THIS SURVEY MEETS THE MINIMUM STANDARDS FOR SURVEYING IN NEW MEXICO, AND THAT IT IS TRUE AND CORRECT TO THE BEST OF MY KNOWLEDGE AND BELIEF.

RONALD J. EIDSON

DATE: 11/19/14

LEGEND
● DENOTES FOUND CORNER AS NOTED



BTA OIL PRODUCERS, LLC

SURVEY FOR A TANK BATTERY TRACT
SITUATED IN THE NE/4 OF SECTION 12,
TOWNSHIP 26 SOUTH, RANGE 32 EAST, N.M.P.M.
LEA COUNTY, NEW MEXICO



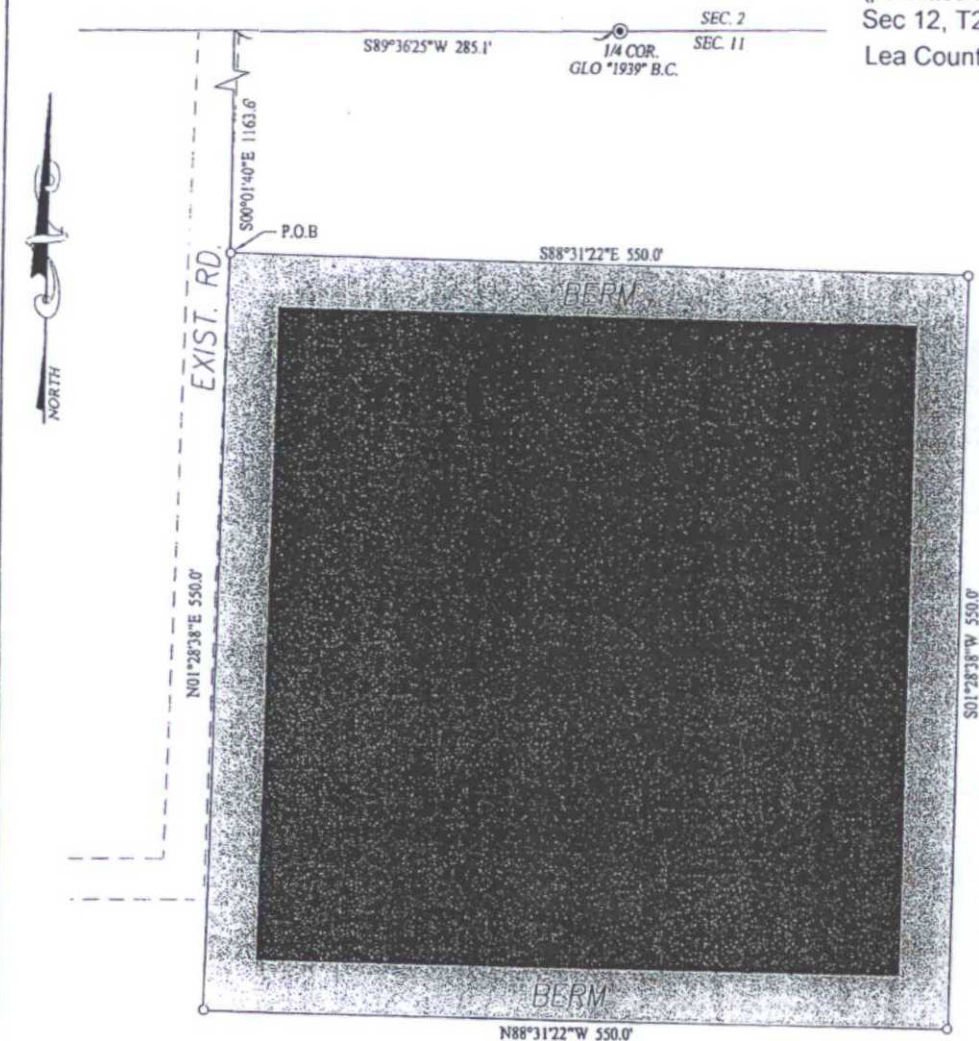
PROVIDING SURVEYING SERVICES
SINCE 1946
JOHN WEST SURVEYING COMPANY
412 N. DAL PASO HOBBS, N.M. 88240
(575) 393-3117 www.jwsc.biz
TBPLS# 10021000

Survey Date: 10/20/14	CAD Date: 11/19/14	Drawn By: LSL
W.O. No.: 14111114	Rev.	Rel. W.O.

Sheet 1 of 1

COPY

BTA Oil Producers, LLC
Mesa 8105 JV-P #15H
Frac Pond
(permitted with Mesa 8105 JV-P #4H)
Sec 12, T26S, R32E
Lea County, NM



DESCRIPTION:

A TRACT FOR A FRAC POND SITUATED IN THE NORTHWEST QUARTER OF SECTION 11, TOWNSHIP 26 SOUTH, RANGE 32 EAST, N.M.P.M., EDDY COUNTY, NEW MEXICO AND BEING MORE PARTICULARLY DESCRIBED AS FOLLOWS:

BEGINNING AT THE NORTHWEST CORNER WHICH LIES S89°36'25\"W 285.1 FEET AND S00°01'40\"E 1163.6 FEET FROM THE NORTH 1/4 CORNER; THEN S88°31'22\"E 550.0 FEET; THEN S01°28'38\"W 550.0 FEET; THEN N88°31'22\"W 550.0 FEET; THEN N01°28'38\"E 550.0 FEET TO THE POINT OF BEGINNING AND CONTAINING 6.94 ACRES MORE OR LESS.

NOTE

BEARINGS SHOWN HEREON ARE MERCATOR GRID AND CONFORM TO THE NEW MEXICO COORDINATE SYSTEM \"NEW MEXICO EAST ZONE\" NORTH AMERICAN DATUM 1983. DISTANCES ARE SURFACE VALUES.

I, RONALD J. EIDSON, NEW MEXICO PROFESSIONAL SURVEYOR No. 3239, DO HEREBY CERTIFY THAT THIS SURVEY PLAT AND THE ACTUAL SURVEY ON THE GROUND UPON WHICH IT IS BASED WERE PERFORMED BY ME OR UNDER MY DIRECT SUPERVISION THAT I AM RESPONSIBLE FOR THIS SURVEY; THAT THIS SURVEY MEETS THE MINIMUM STANDARDS FOR SURVEYING IN NEW MEXICO; AND THAT THIS IS TRUE AND CORRECT TO THE BEST OF MY KNOWLEDGE AND BELIEF.

RONALD J. EIDSON

DATE: _____

PROVIDING SURVEYING SERVICES
SINCE 1946

JOHN WEST SURVEYING COMPANY

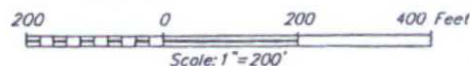
412 N. DAL PASO HOBBS, N.M. 88240
(575) 393-3117 www.jwsc.biz
TBPLS# 10021000



© DRAFTING

LEGEND

⊙ DENOTES FOUND CORNER AS NOTED



BTA OIL PRODUCERS, LLC

SURVEY FOR A FRAC POND TRACT
SITUATED IN THE NW/4 OF SECTION 11,
TOWNSHIP 26 SOUTH, RANGE 32 EAST, N.M.P.M.
EDDY COUNTY, NEW MEXICO

Survey Date: 11/16/14	CAD Date: 11/10/14	Drawn By: LSL
W.O. No.: 14111127	Rev.:	Rel. W.O.:

Sheet 1 of 1