

COPY

DISTRICT I
1625 N. French Dr., Hobbs, NM 88240
Phone (575) 393-6161 Fax (575) 393-0720

DISTRICT II
811 S. First St., Artesia, NM 88210
Phone (575) 748-1283 Fax (575) 748-9720

DISTRICT III
1000 Rio Brazos Road, Aztec, NM 87410
Phone (505) 334-6178 Fax (505) 334-6170

DISTRICT IV
1220 S. St. Francis Dr., Santa Fe, NM 87505
Phone (505) 476-3460 Fax (505) 476-3462

State of New Mexico
Energy, Minerals & Natural Resources Department

OIL CONSERVATION DIVISION

1220 South St. Francis Dr.
Santa Fe, New Mexico 87505

HOBBS OGD

NOV 30 2015

RECEIVED

Form C-102

Revised August 1, 2011

Submit one copy to appropriate
District Office

☐ AMENDED REPORT

WELL LOCATION AND ACREAGE DEDICATION PLAT

API Number 30-025-42962	Pool Code 87903	Pool Name WC-025 G-08 52592356; LWRB5
Property Code 305301	Property Name MESA 8105 JV-P	Well Number 23H
OGRID No. 260297	Operator Name BTA OIL PRODUCERS, LLC	Elevation 3287

Surface Location

UL or lot No.	Section	Township	Range	Lot Idn	Feet from the	North/South line	Feet from the	East/West line	County
D	12	26-S	32-E		330	NORTH	710	WEST	LEA

Bottom Hole Location If Different From Surface

UL or lot No.	Section	Township	Range	Lot Idn	Feet from the	North/South line	Feet from the	East/West line	County
M	12	26-S	32-E		230	SOUTH	950	WEST	LEA
Dedicated Acres 160	Joint or Infill	Consolidation Code	Order No.						

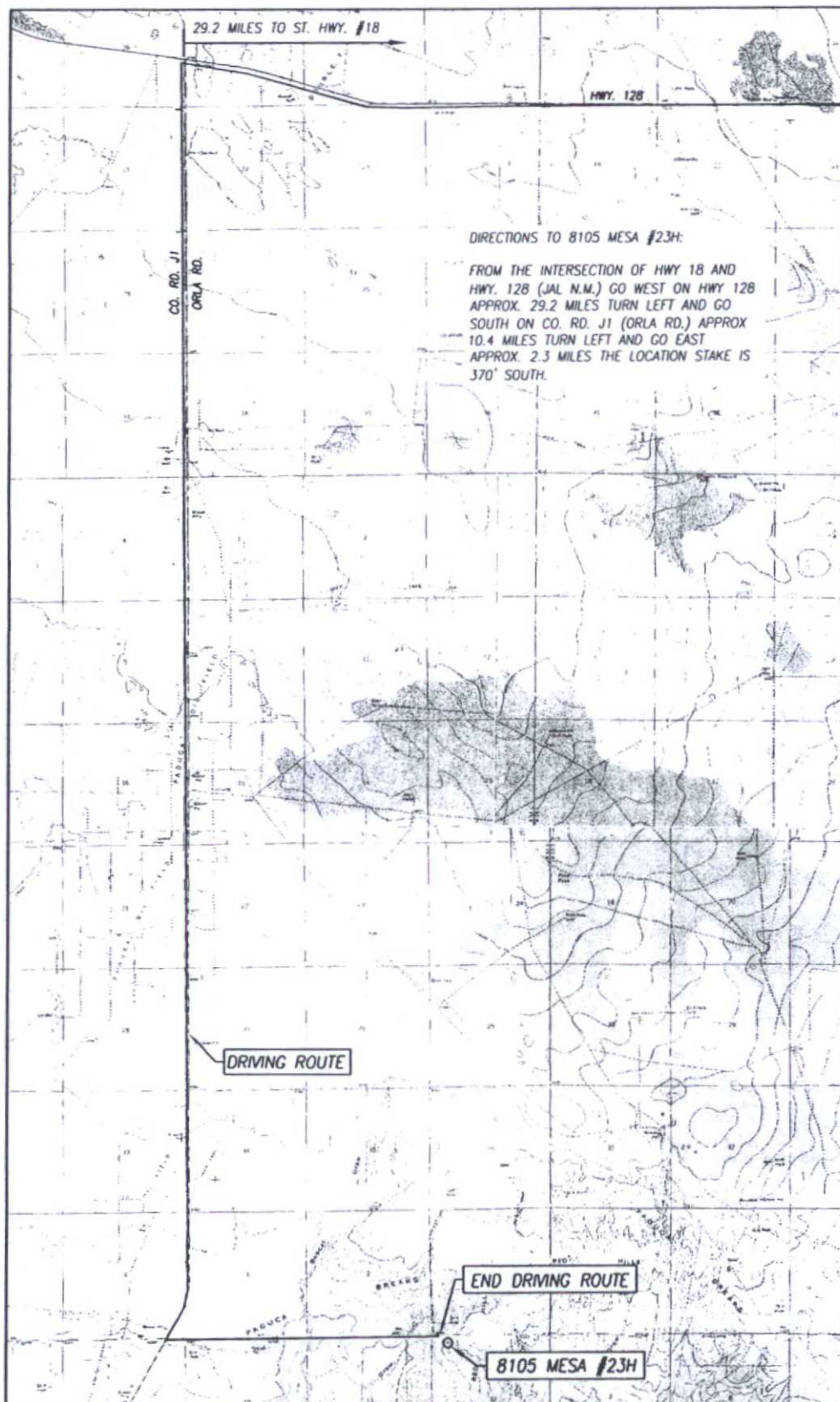
NO ALLOWABLE WILL BE ASSIGNED TO THIS COMPLETION UNTIL ALL INTERESTS HAVE BEEN CONSOLIDATED OR A NON-STANDARD UNIT HAS BEEN APPROVED BY THE DIVISION

	GEODETTIC COORDINATES NAD 27 NME SURFACE LOCATION Y = 387703.2 N X = 716573.4 E LAT. = 32.063983° N LONG. = 103.634219° W	GEODETTIC COORDINATES NAD 83 NME SURFACE LOCATION Y = 387760.6 N X = 757760.2 E LAT. = 32.064108° N LONG. = 103.634690° W	OPERATOR CERTIFICATION I hereby certify that the information herein is true and complete to the best of my knowledge and belief, and that this organization either owns a working interest or unleased mineral interest in the land including the proposed bottom hole location or has a right to drill this well at this location pursuant to a contract with an owner of such mineral or working interest, or to a voluntary pooling agreement or a compulsory pooling order heretofore entered by the division. Kayla McConnell 4/22/2015 Signature Date Kayla McConnell Printed Name kmccconnell@btaoil.com E-mail Address
	CORNER COORDINATES TABLE NAD 27 NME A - Y = 388025.8 N, X = 715861.6 E B - Y = 388039.4 N, X = 717192.6 E C - Y = 382694.3 N, X = 717222.3 E D - Y = 382677.2 N, X = 715890.1 E		
	CORNER COORDINATES TABLE NAD 83 NME A - Y = 388083.2 N, X = 757048.4 E B - Y = 388096.8 N, X = 758379.4 E C - Y = 382751.6 N, X = 758409.3 E D - Y = 382734.4 N, X = 757077.1 E		
	BOTTOM HOLE LOCATION NAD 27 NME Y = 382919.3 N X = 716838.8 E LAT. = 32.050828° N LONG. = 103.633462° W	BOTTOM HOLE LOCATION NAD 83 NME Y = 382976.6 N X = 758025.9 E LAT. = 32.050953° N LONG. = 103.633932° W	
SURVEYOR CERTIFICATION I hereby certify that the well location shown on this plat was plotted from field notes of actual surveys made by me or under my supervision, and that the same is true and correct to the best of my belief. OCTOBER 21, 2014 Date of Survey Ronald J. Eidson Signature & Seal of Professional Surveyor Ronald J. Eidson 11/20/2014 Certificate Number LSI. JWSC W.O. 14.11.1093			

DEC 01 2015

COPY

LOCATION VERIFICATION MAP



HOBBS OGD

NOV 30 2015

RECEIVED

SEC. 12 TWP. 26-S RGE. 32-E
COUNTY LEA STATE NEW MEXICO
DESCRIPTION 330' FNL & 710' FWL
ELEVATION 3287'
OPERATOR BTA OIL PRODUCERS, LLC
LEASE 8105 MESA
U.S.G.S. TOPOGRAPHIC MAP
PADUCA BREAKS WEST, N.M. SURVEY N.M.P.M.

SCALE: 1" = 5280'

CONTOUR INTERVAL:
PADUCA BREAKS WEST, N.M. - 10'
PADUCA BREAKS NW, N.M. - 10'

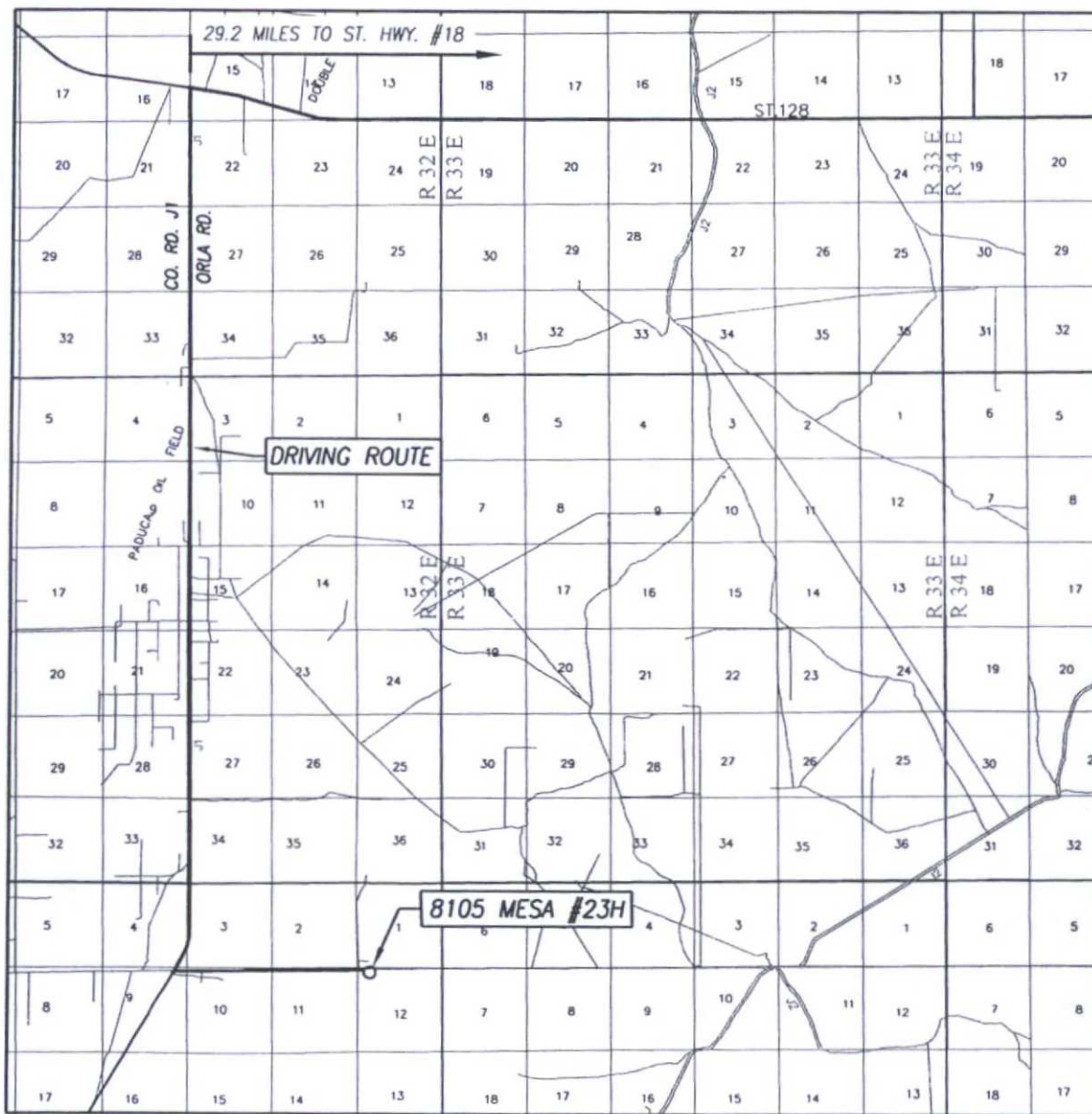
PROVIDING SURVEYING SERVICES
SINCE 1946
JOHN WEST SURVEYING COMPANY
412 N. DAL PASO HOBBS, N.M. 88240
(575) 393-3117 www.jwsc.biz
TBPLS# 10021000

Attachment to APD
BTA Oil Producers, L
Mesa 8105 JV-P #23
Sec 12, T26S, R32E
Lea County, NM

COPY


VICINITY MAP

Attachment to APD
BTA Oil Producers, LLC
Mesa 8105 JV-P #23H
Sec 12, T26S, R32E
Lea County, NM



SCALE: 1" = 2 MILES
DRIVING ROUTE: SEE LOCATION VERIFICATION MAP

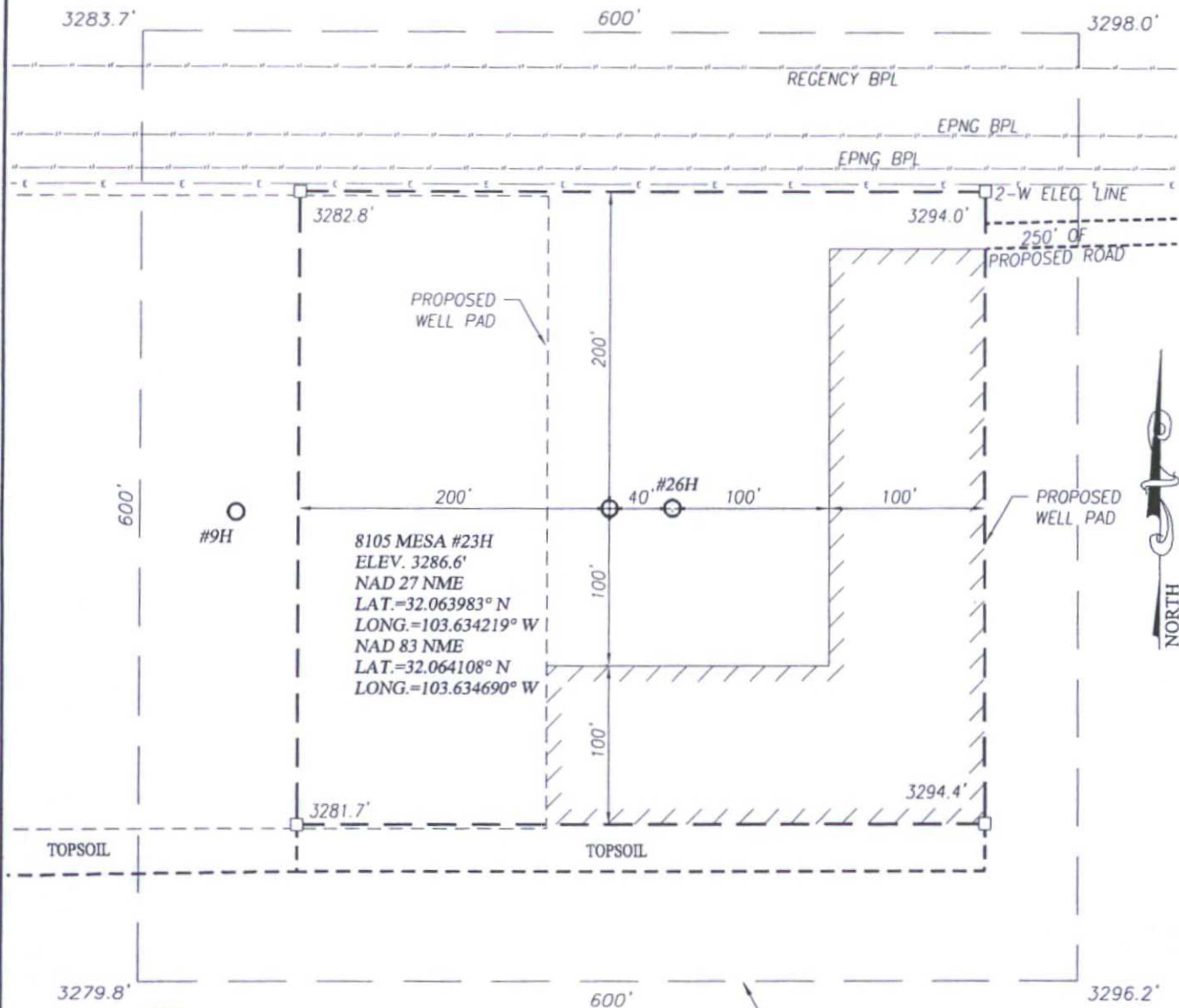
SEC. 12 TWP. 26-S RGE. 32-E
SURVEY N.M.P.M.
COUNTY LEA STATE NEW MEXICO
DESCRIPTION 330' FNL & 710' FWL
ELEVATION 3287'
OPERATOR BTA OIL PRODUCERS, LLC
LEASE 8105 MESA



PROVIDING SURVEYING SERVICES
SINCE 1946
JOHN WEST SURVEYING COMPANY
412 N. DAL PASO HOBBS, N.M. 88240
(575) 393-3117 www.jwsc.biz
TBPLS# 10021000

COPY

BTA Oil Producers, LLC
Mesa 8105 JV-P #23H
Location Plat – Interim Reclamation
Sec 12, T26S, R32E
Lea County, NM



DIRECTIONS TO 8105 MESA #23H:

FROM THE INTERSECTION OF HWY 18 AND HWY. 128 (JAL N.M.)
GO WEST ON HWY 128 APPROX. 29.2 MILES TURN LEFT AND
GO SOUTH ON CO. RD. J1 (ORLA RD.) APPROX 10.4 MILES
TURN LEFT AND GO EAST APPROX. 2.3 MILES THE LOCATION
STAKE IS 370' SOUTH.

100 0 100 200 Feet
Scale: 1"=100'

BTA OIL PRODUCERS, LLC

8105 MESA #23H WELL
LOCATED 330 FEET FROM THE NORTH LINE
AND 710 FEET FROM THE WEST LINE OF SECTION 12,
TOWNSHIP 26 SOUTH, RANGE 32 EAST, N.M.P.M.,
LEA COUNTY, NEW MEXICO



PROVIDING SURVEYING SERVICES
SINCE 1946
JOHN WEST SURVEYING COMPANY
412 N. DAL PASO HOBBS, N.M. 88240
(575) 393-3117 www.jwsc.biz
TBPLS# 10021000

Survey Date: 10/21/14	CAD Date: 11/18/14	Drawn By: LSL
W.O. No.: 14111093	Rev: .	Rel. W.O.: Sheet 1 of 1

© DRAFT

COPY

BTA Oil Producers, LLC
Mesa 8105 JV-P #23H
1 Mile Radius Map
Sec 12, T26S, R32E
Lea County, NM



8105 JV-P Mesa #23H - 1 Mile Radius Map

SHL: 330'FNL & 710'FWL Sec.12,T26S,R32E

BHL: 230'FSL & 950'FWL Sec.12,T26S,R32E

Lea County, New Mexico

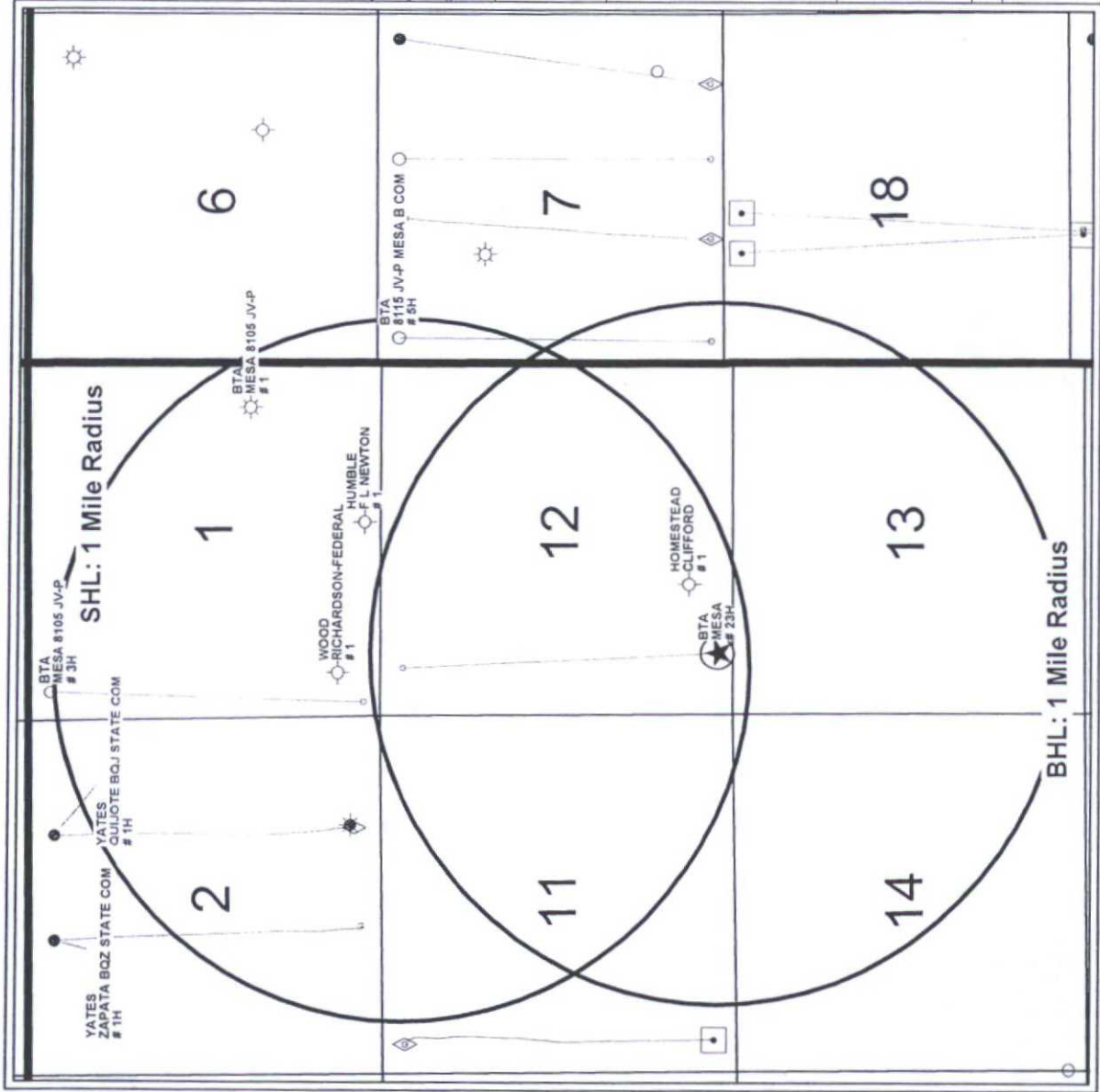
- WELL SYMBOLS
- Proposed Location
 - Location Only
 - Drilling Well
 - Drilled, Waiting on Completion
 - Oil Well
 - Gas Well
 - Oil & Gas Well
 - Dry Hole
 - Oil & Gas Well

REMARKS

8105 JV-P Mesa #23H Bottom Hole Location
Highlighted in Yellow

Only Wells Inside a Mile Radius of Surface &
Bottom Hole Locations Labeled

By: JHB



8105 Mesa Plan of Development Proposed Flowlines

BTA Oil Producers, LLC
Mesa 8105 JV-P #23H
Proposed Flowlines Map
Sec 12, T26S, R32E
Lea County, NM

Approximate Distance
Well to Central Tank Battery Per Section

Sec. 11 CTB
4H ~ 1,215'
5H/21H ~ 200'
6H ~ 1,170'
7H ~ 1,440'
8H/22H ~ 3,909'
CTB to SWD #1W ~ 1,308'

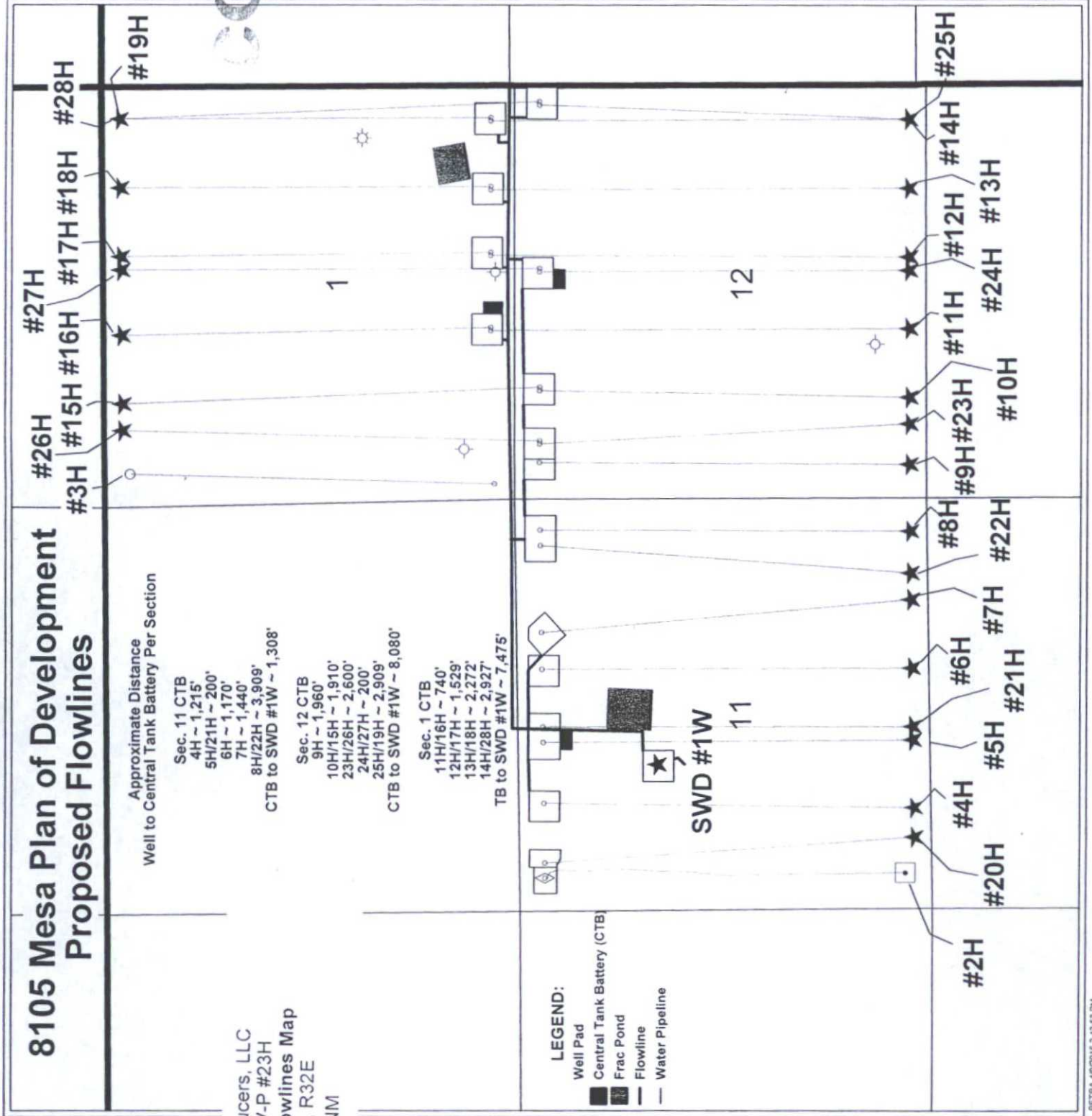
Sec. 12 CTB
9H ~ 1,960'
10H/15H ~ 1,910'
23H/26H ~ 2,600'
24H/27H ~ 200'
25H/19H ~ 2,909'
CTB to SWD #1W ~ 8,080'

Sec. 1 CTB
11H/16H ~ 740'
12H/17H ~ 1,529'
13H/18H ~ 2,272'
14H/28H ~ 2,927'
TB to SWD #1W ~ 7,475'

LEGEND:

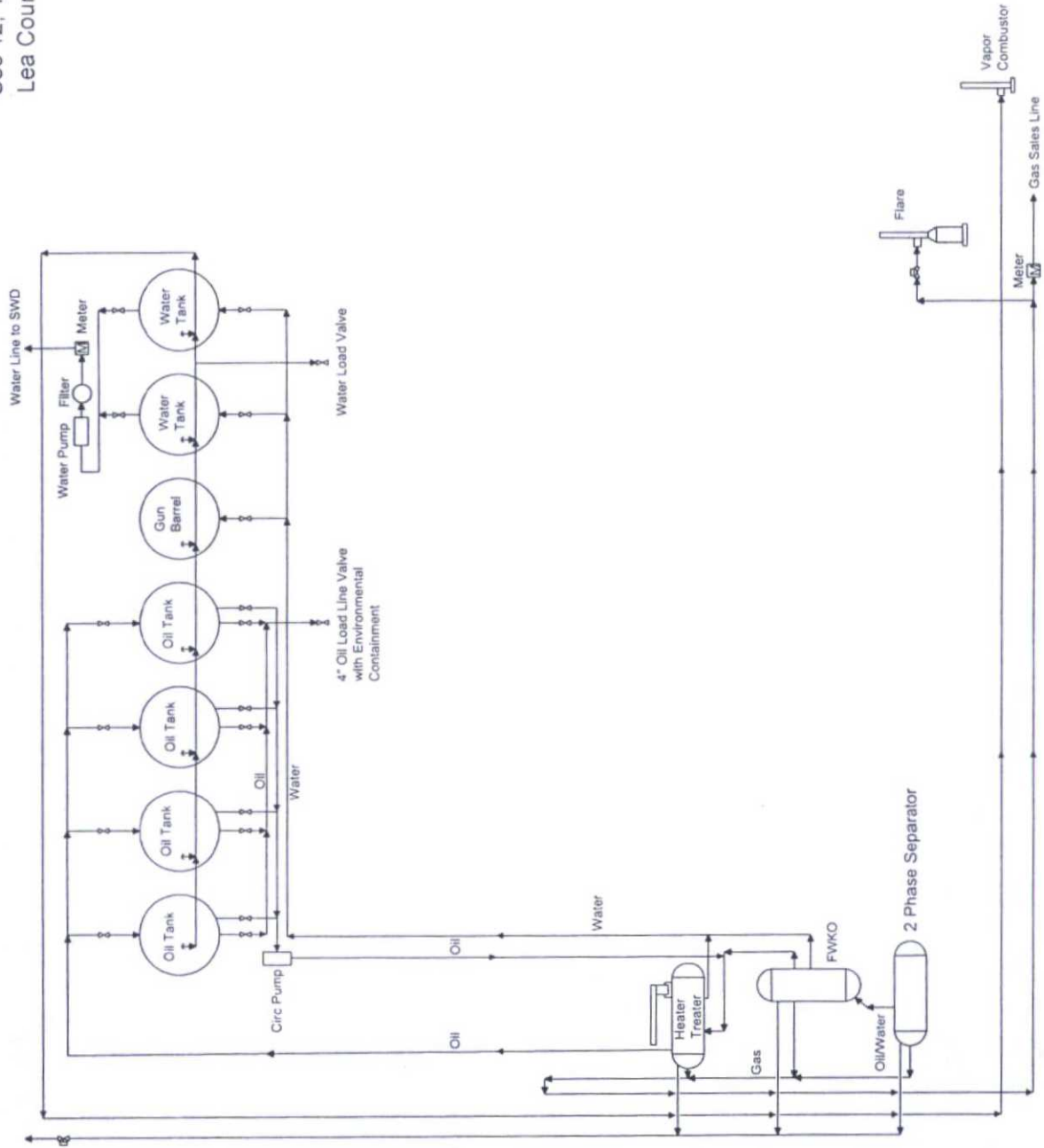
- Well Pad
- Central Tank Battery (CTB)
- Frac Pond
- Flowline
- Water Pipeline

COPY



COPY

BTA Oil Producers, LLC
Mesa 8105 JV-P #23H
Proposed Central Tank Battery
Sec 12, T26S, R32E
Lea County, NM



NOT TO SCALE

BTA Oil Producers, LLC

Mesa 8105 JV-P

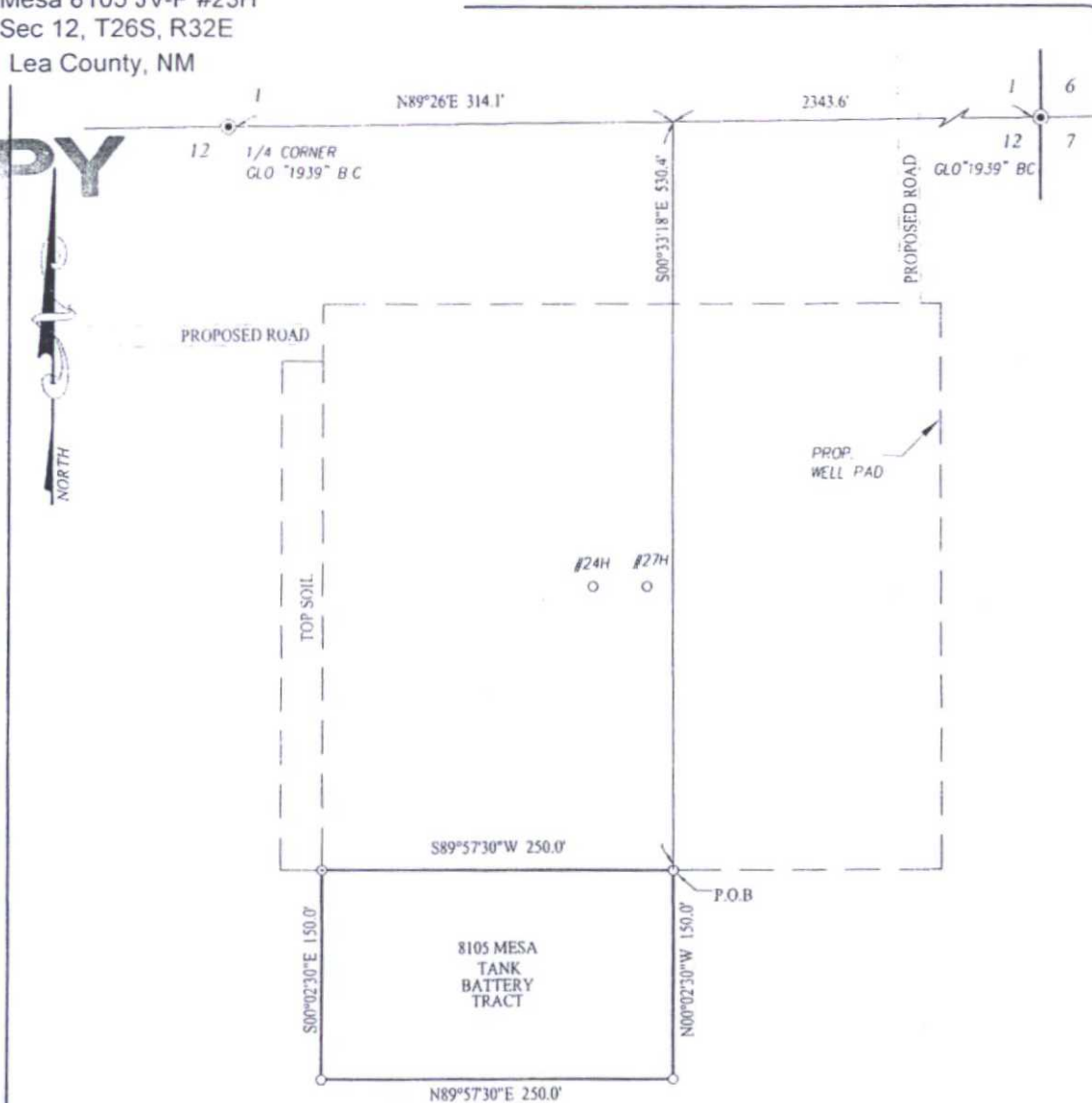
-Proposed-

Central Tank Battery

Section 12, T26S-R32E

Lea County, NM

Attachment to APD
BTA Oil Producers, LLC
Mesa 8105 JV-P #23H
Sec 12, T26S, R32E
Lea County, NM



DESCRIPTION:

A TRACT SITUATED IN THE NORTHEAST QUARTER OF SECTION 12, TOWNSHIP 26 SOUTH, RANGE 32 EAST, N.M.P.M., LEA COUNTY, NEW MEXICO AND BEING MORE PARTICULARLY DESCRIBED AS FOLLOWS:

BEGINNING AT THE NORTHEAST CORNER WHICH LIES N89°26'42"E 314.1 FEET AND S00°33'18"E 530.4 FEET FROM THE NORTH 1/4 CORNER; THEN S89°57'30"W 250.0 FEET; THEN S00°02'30"E 150.0 FEET; THEN N89°57'30"E 250.0 FEET; THEN N00°02'30"W 150.0 FEET TO THE POINT OF BEGINNING AND CONTAINING 0.86 ACRES MORE OR LESS.

NOTE

BEARINGS SHOWN HEREON ARE MERCATOR GRID AND CONFORM TO THE NEW MEXICO COORDINATE SYSTEM "NEW MEXICO EAST ZONE" NORTH AMERICAN DATUM 1983. DISTANCES ARE SURFACE VALUES.

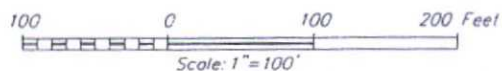
I, RONALD J. EIDSON, NEW MEXICO PROFESSIONAL SURVEYOR No. 3239, DO HEREBY CERTIFY THAT THIS SURVEY AND THE ACTUAL SURVEY ON THE GROUND UPON WHICH IT IS BASED WERE PERFORMED BY ME OR UNDER MY DIRECT SUPERVISION. I AM RESPONSIBLE FOR THIS SURVEY; THAT THIS SURVEY MEETS THE MINIMUM STANDARDS FOR SURVEYING IN NEW MEXICO; AND THAT IT IS TRUE AND CORRECT TO THE BEST OF MY KNOWLEDGE AND BELIEF.

RONALD J. EIDSON

DATE: 10/20/14

LEGEND

⊙ DENOTES FOUND CORNER AS NOTED



BTA OIL PRODUCERS, LLC

SURVEY FOR A TANK BATTERY TRACT
SITUATED IN THE NE/4 OF SECTION 12,
TOWNSHIP 26 SOUTH, RANGE 32 EAST, N.M.P.M.
LEA COUNTY, NEW MEXICO

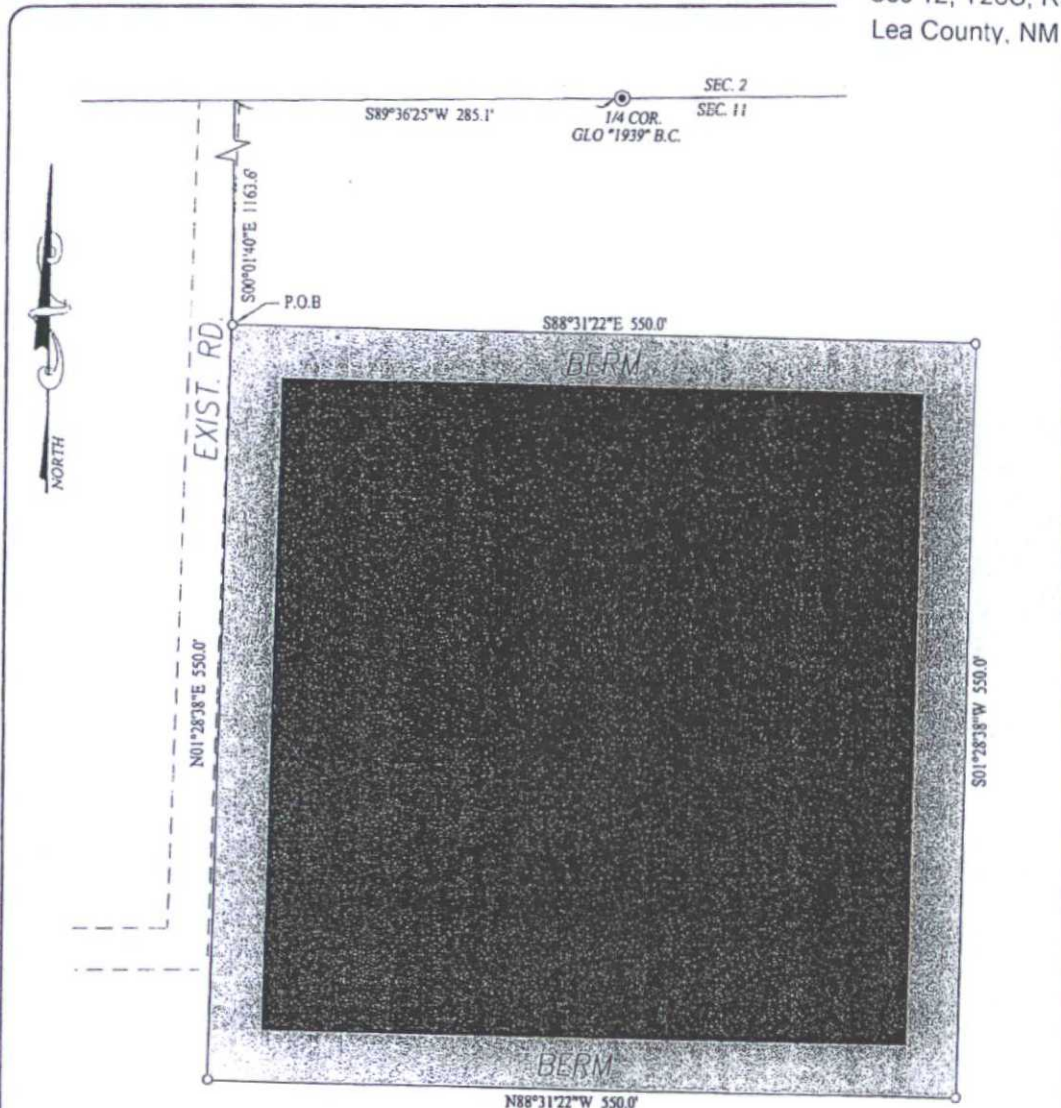


PROVIDING SURVEYING SERVICES
SINCE 1946
JOHN WEST SURVEYING COMPANY
412 N. DAL PASO HOBBS, N.M. 88240
(575) 393-3117 www.jwsc.biz
TBPLS# 10021000

Survey Date: 10/20/14	CAD Date: 11/19/14	Drawn By: LSL
W.O. No.: 14111114	Rev.	Rel W.O.:

COPY

BTA Oil Producers, LLC
 Mesa 8105 JV-P #23H
 Frac Pond
 (permitted with Mesa 8105 JV-P #4H)
 Sec 12, T26S, R32E
 Lea County, NM



DESCRIPTION:

A TRACT FOR A FRAC POND SITUATED IN THE NORTHWEST QUARTER OF SECTION 11, TOWNSHIP 26 SOUTH, RANGE 32 EAST, N.M.P.M., EDDY COUNTY, NEW MEXICO AND BEING MORE PARTICULARLY DESCRIBED AS FOLLOWS:

BEGINNING AT THE NORTHWEST CORNER WHICH LIES S89°36'25\"W 285.1 FEET AND S00°01'40\"E 1163.6 FEET FROM THE NORTH 1/4 CORNER; THEN S88°31'22\"E 550.0 FEET; THEN S01°28'38\"W 550.0 FEET; THEN N88°31'22\"W 550.0 FEET; THEN N01°28'38\"E 550.0 FEET TO THE POINT OF BEGINNING AND CONTAINING 6.94 ACRES MORE OR LESS.

NOTE

BEARINGS SHOWN HEREON ARE MERCATOR GRID AND CONFORM TO THE NEW MEXICO COORDINATE SYSTEM \"NEW MEXICO EAST ZONE\" NORTH AMERICAN DATUM 1983. DISTANCES ARE SURFACE VALUES.

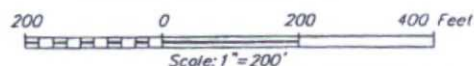
I, RONALD J. EIDSON, NEW MEXICO PROFESSIONAL SURVEYOR No. 3239, DO HEREBY CERTIFY THAT THIS SURVEY PLAT AND THE ACTUAL SURVEY ON THE GROUND UPON WHICH IT IS BASED WERE PERFORMED BY ME OR UNDER MY DIRECT SUPERVISION THAT I AM RESPONSIBLE FOR THIS SURVEY; THAT THIS SURVEY MEETS THE MINIMUM STANDARDS FOR SURVEYING IN NEW MEXICO; AND THAT THIS IS TRUE AND CORRECT TO THE BEST OF MY KNOWLEDGE AND BELIEF.

RONALD J. EIDSON

DATE: 11/10/14

LEGEND

⊙ DENOTES FOUND CORNER AS NOTED



BTA OIL PRODUCERS, LLC

SURVEY FOR A FRAC POND TRACT
 SITUATED IN THE NW/4 OF SECTION 11,
 TOWNSHIP 26 SOUTH, RANGE 32 EAST, N.M.P.M.
 EDDY COUNTY, NEW MEXICO

Survey Date: 10/16/14	CAD Date: 11/10/14	Drawn By: LSL
W.O. No.: 14111127	Rev.:	Rel. W.O.:
		Sheet 1 of 1



PROVIDING SURVEYING SERVICES
 SINCE 1946
JOHN WEST SURVEYING COMPANY
 412 N. DAL PASO HOBBS, N.M. 88240
 (575) 393-3117 www.jwsc.biz
 TBPLS# 10021000