

District I
1625 N. French Dr., Hobbs, NM 88240
Phone: (575) 393-6161 Fax: (575) 393-0720
District II
811 S. First St., Artesia, NM 88210
Phone: (575) 748-1283 Fax: (575) 748-9720
District III
1000 Rio Brazos Road, Aztec, NM 87410
Phone: (505) 334-6178 Fax: (505) 334-6170
District IV
1220 S. St. Francis Dr., Santa Fe, NM 87505
Phone: (505) 476-3460 Fax: (505) 476-3462

State of New Mexico
Energy, Minerals & Natural Resources Department
OIL CONSERVATION DIVISION
1220 South St. Francis Dr.
Santa Fe, NM 87505

HOBBS OGD
NOV 30 2015
RECEIVED

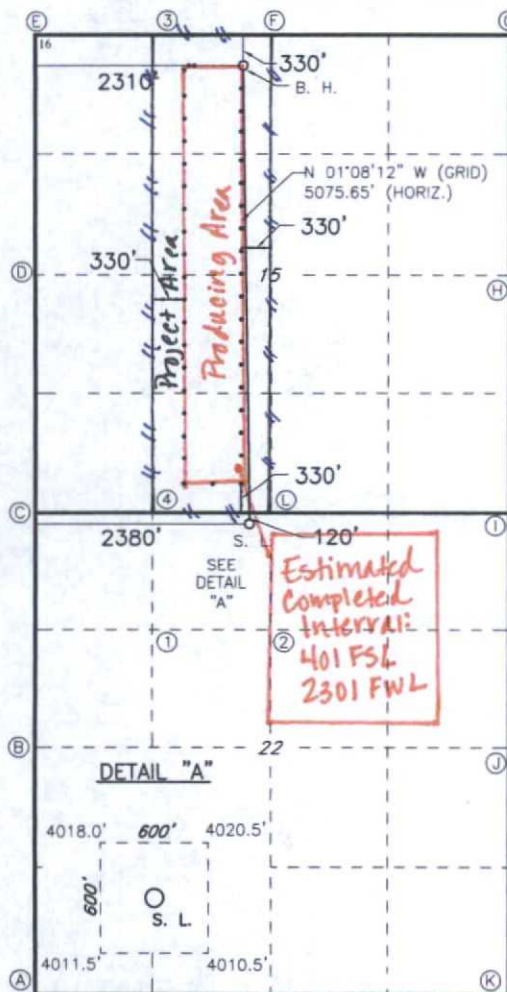


Form C-102
Revised August 1, 2011
Submit one copy to appropriate
District Office

☐ AMENDED REPORT

WELL LOCATION AND ACREAGE DEDICATION PLAT

1 API Number 30-025-42967		2 Pool Code 44500		3 Pool Name Maljamar; Yeso West					
4 Property Code 314751		5 Property Name IVAR THE BONELESS FED				6 Well Number 24H			
7 OGRID NO. 229137		8 Operator Name COG OPERATING, LLC				9 Elevation 4019'			
10 Surface Location									
UL or lot no. C	Section 22	Township 17S	Range 32E	Lot Idn	Feet from the 120	North/South line NORTH	Feet From the 2380	East/West line WEST	County LEA
11 Bottom Hole Location If Different From Surface									
UL or lot no. C	Section 15	Township 17S	Range 32E	Lot Idn	Feet from the 330	North/South line NORTH	Feet from the 2310	East/West line WEST	County LEA
12 Dedicated Acres 160		13 Joint or Infill		14 Consolidation Code		15 Order No.			

No allowable will be assigned to this completion until all interest have been consolidated or a non-standard unit has been approved by the division.

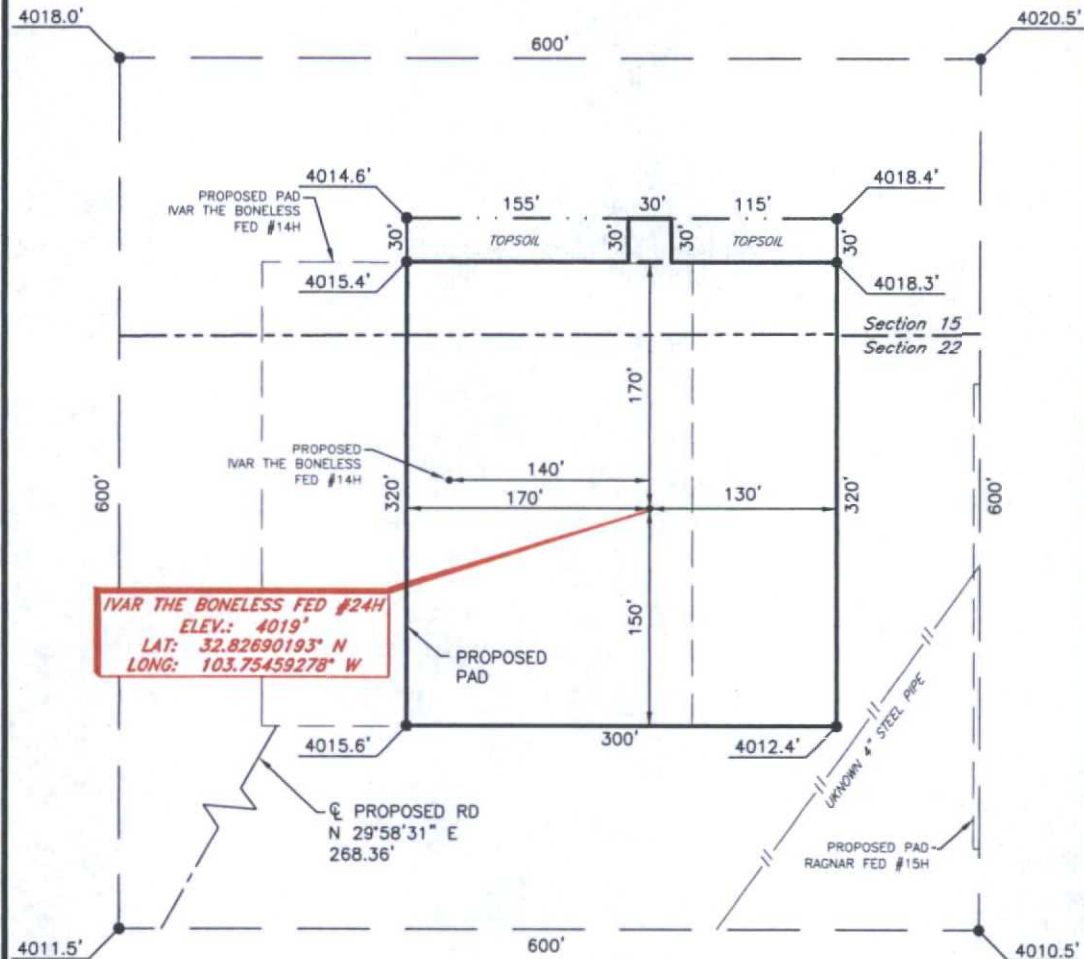
	<p>GEODETIC DATA NAD 27 GRID - NM EAST SURFACE LOCATION N: 665024.8 - E: 677779.1 LAT: 32.82690193° N LONG: 103.75459278° W BOTTOM HOLE N: 670098.2 - E: 677678.4 CORNER DATA NAD 27 GRID - NM EAST A: FOUND 1/2" REBAR N: 659858.7 - E: 675431.5 B: FOUND 2" PIPE N: 662496.7 - E: 675414.3 C: FOUND 1" NAIL N: 665135.4 - E: 675398.3 D: FOUND 2" PIPE N: 667777.2 - E: 675381.9 E: FOUND BRASS CAP "1913" N: 670415.5 - E: 675366.5 F: FOUND BRASS CAP "1913" N: 670430.0 - E: 678005.6 G: FOUND BRASS CAP "1913" N: 670433.3 - E: 680638.7 H: FOUND BRASS CAP "1913" N: 667794.8 - E: 680655.1 I: FOUND BRASS CAP "1913" N: 665155.6 E: 680671.4 J: FOUND 1/2" REBAR N: 662516.2 E: 680687.3 K: FOUND BRASS CAP "1913" N: 659876.2 E: 680701.5 L: FOUND BRASS CAP "1913" N: 665145.7 E: 678029.0</p>	<p>17 OPERATOR CERTIFICATION I hereby certify that the information contained herein is true and complete to the best of my knowledge and belief, and that this organization either owns a working interest or unleased mineral interest in the land including the proposed bottom hole location or has a right to drill this well at this location pursuant to a contract with an owner of such a mineral or working interest, or to a voluntary pooling agreement or a compulsory pooling order heretofore entered by the division. Signature:  Date: 3-12-15 Printed Name: Kelly J. Holly E-mail Address: kholly@concho.com</p>
	<p>18 SURVEYOR CERTIFICATION I hereby certify that the well location shown on this plat was plotted from field notes of actual surveys made by me or under my supervision, and that the same is true and correct to the best of my belief. Date of Survey: 12-05-2014 Signature and Seal of Professional Surveyor:  Certificate Number: 19680</p>	

RRC - Firm No.: TX 10193838 NM 4655451 - Job No.: LS140547

DEC 01 2015

COG OPERATING, LLC

IVAR THE BONELESS FED #24H
(120' FNL & 2380' FWL)
SECTION 22, T17S, R32E
N. M. P. M., LEA CO., NEW MEXICO



DIRECTIONS TO LOCATION

From the intersection of CR-126 (Canoco Rd.) and CR-126A (Maljamar Rd.)
Go North on CR-126A approx. 0.6 miles to a lease road on the right;

Turn right and go Southeast approx. 0.4 miles to a lease road;

Turn left and go North approx. 312 feet to proposed road;

Go Northeast approx. 268 feet to pad;

Location is 208 feet to the Northeast.

SCALE: 1" = 100'
0 50 100
BEARINGS ARE
NAD 27 GRID - NM EAST
DISTANCES ARE GROUND

Firm No.: TX 10193838 NM 4655451

Copyright 2014 - All Rights Reserved

NO.	REVISION	DATE
JOB NO.:	LS140547	
DWG. NO.:	140547PAD	

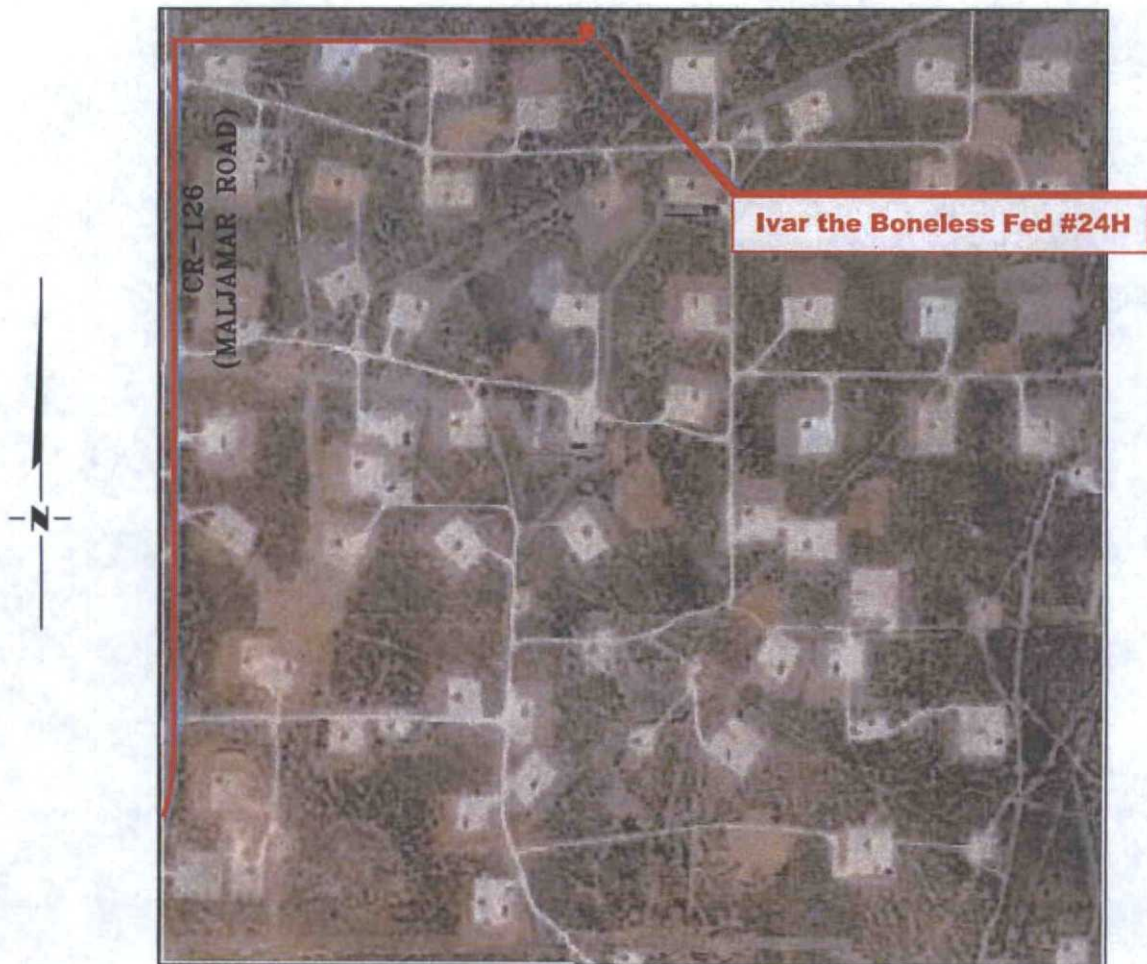
RRC

308 W. BROADWAY ST., HOBBS, NM 88240 (575) 964-8200

SCALE: 1" = 100'
DATE: 1-14-2015
SURVEYED BY: IE/DH
DRAWN BY: CMJ
APPROVED BY: RMH
SHEET : 1 OF 1

VICINITY MAP

NOT TO SCALE



*SECTION 22, TWP. 17 SOUTH, RGE. 32 EAST,
N. M. P. M., LEA CO., NEW MEXICO*

OPERATOR: COG Operating, LLC
LEASE: Ivar the Boneless Fed
WELL NO.: 24H

LOCATION: 120' FNL & 2380' FWL
ELEVATION: 4019'

Firm No.: TX 10193838 NM 4655451

Copyright 2014 - All Rights Reserved

NO.	REVISION	DATE
JOB NO.: LS140547		
DWG. NO.: 140547VM		

RRC

308 W. BROADWAY ST., HOBBS, NM 88240 (575) 964-8200

SCALE: NTS
DATE: 1-12-2015
SURVEYED BY: IE/DH
DRAWN BY: CMJ
APPROVED BY: RMH
SHEET : 1 OF 1

VICINITY MAP

NOT TO SCALE



SECTION 22, TWP. 17 SOUTH, RGE. 32 EAST,
N. M. P. M., LEA CO., NEW MEXICO

OPERATOR: COG Operating, LLC
LEASE: Ivar the Boneless Fed
WELL NO.: 24H
ELEVATION: 4019'

LOCATION: 120' FNL & 2380' FWL
CONTOUR INTERVAL:
USGS TOPO. SOURCE MAP:
Maljamar (P. E. 1985)

Firm No.: TX 10193838 NM 4655451

Copyright 2014 - All Rights Reserved

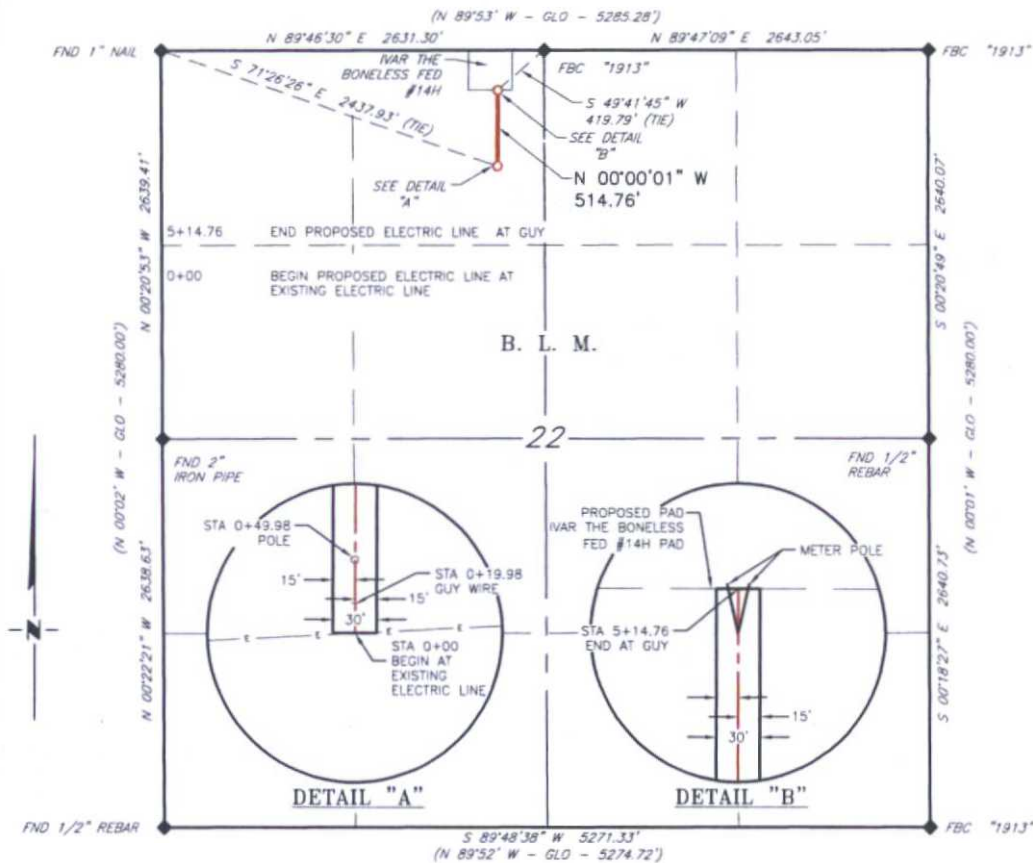
NO.	REVISION	DATE
JOB NO.:	LS140547	
DWG. NO.:	140547VM	

RRC

308 W. BROADWAY ST., HOBBS, NM 88240 (575) 964-8200

SCALE: NTS
DATE: 1-12-2015
SURVEYED BY: GB/SM
DRAWN BY: CMJ
APPROVED BY: RMH
SHEET : 1 OF 1

COG OPERATING, LLC
PROPOSED ELECTRIC LINE FOR THE
IVAR THE BONELESS FED #14H WELL LOCATION
SECTION 22, T17S, R32E,
N. M. P. M., EDDY CO., NEW MEXICO



DESCRIPTION

A strip of land 30 feet wide, being 514.76 feet or 31.198 rods in length, lying in Section 22, Township 17 South, Range 32 East, N. M. P. M., Eddy County, New Mexico, being 15 feet left and 15 feet right of the following described survey of a centerline across B. L. M. lands:

BEGINNING at Engr. Sta 0+00, a point in the Northwest quarter of Section 22, which bears S 71°26'26" E, 2,437.93 feet from a 1" nail, found for the Northwest corner of Section 22;

Thence N 00°00'01" W, 514.76 feet, to Engr. Sta 5+14.76, the End of Survey, a point which bears S 49°41'45" W, 419.79 feet, from a brass cap, stamped "1913", found for the North quarter corner of Section 22;

Said strip of land contains 0.355 acres, more or less and is allocated by forties as follows:

NE 1/4 NW 1/4 31.198 Rods 0.355 Acres

SCALE: 1" = 1000'
0 500' 1000'

BEARINGS ARE GRID NAD 27
NM EAST
DISTANCES ARE HORIZ. GROUND.

LEGEND

() RECORD DATA - GLO

◆ FOUND MONUMENT AS NOTED

— PROPOSED ELECTRIC LINE

I, R. M. Howett, a N. M. Professional Surveyor, hereby certify that I prepared this plat from an actual survey made on the ground under my direct supervision, said survey and plat meet the Min. Stds. for Land Surveying in the State of N. M. and are true and correct to the best of my knowledge and belief.

Robert M. Howett
Robert M. Howett NM PS 19680



Firm No.: TX 10193838 NM 4655451

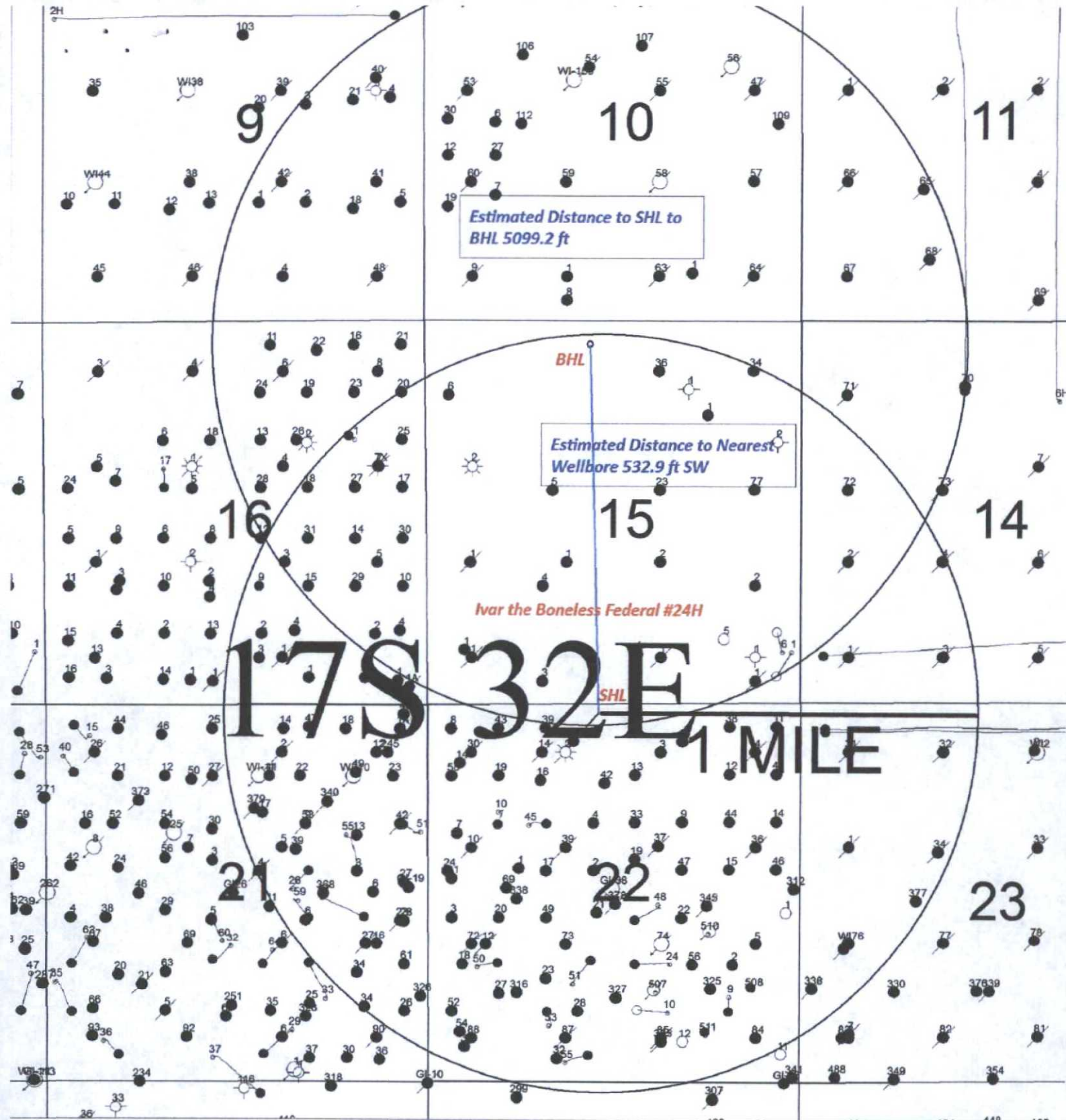
Copyright 2014 - All Rights Reserved

NO.	REVISION	DATE
JOB NO.:	LS1504130	
DWG. NO.:	1504130EL	

RRC

308 W. BROADWAY ST., HOBBS, NM 88240 (575) 964-8200

SCALE: 1" = 1000'
DATE: 4-10-2015
SURVEYED BY: BC/AS
DRAWN BY: CMJ
APPROVED BY: RMH
SHEET : 1 OF 1



SENM Shelf Area
Ivar the Boneless Federal #24H

SEC. 22, T17S - R32E SHL 120 FNL 2380 FWL, UNIT C
SEC. 15, T17S - R32E BHL 330 FNL 2310 FWL, UNIT C



Data use subject to license.

© DeLorme. XMap® 7.

www.delorme.com

