

District I  
1625 N. French Dr., Hobbs, NM 88240  
Phone: (575) 393-6161 Fax: (575) 393-0720  
District II  
811 S. First St., Artesia, NM 88210  
Phone: (575) 748-1283 Fax: (575) 748-9720  
District III  
1000 Rio Brazos Road, Aztec, NM 87410  
Phone: (505) 334-6178 Fax: (505) 334-6170  
District IV  
1220 S. St. Francis Dr., Santa Fe, NM 87505  
Phone: (505) 476-3460 Fax: (505) 476-3462

State of New Mexico  
Energy, Minerals & Natural Resources Department  
OIL CONSERVATION DIVISION  
1220 South St. Francis Dr.  
Santa Fe, NM 87505

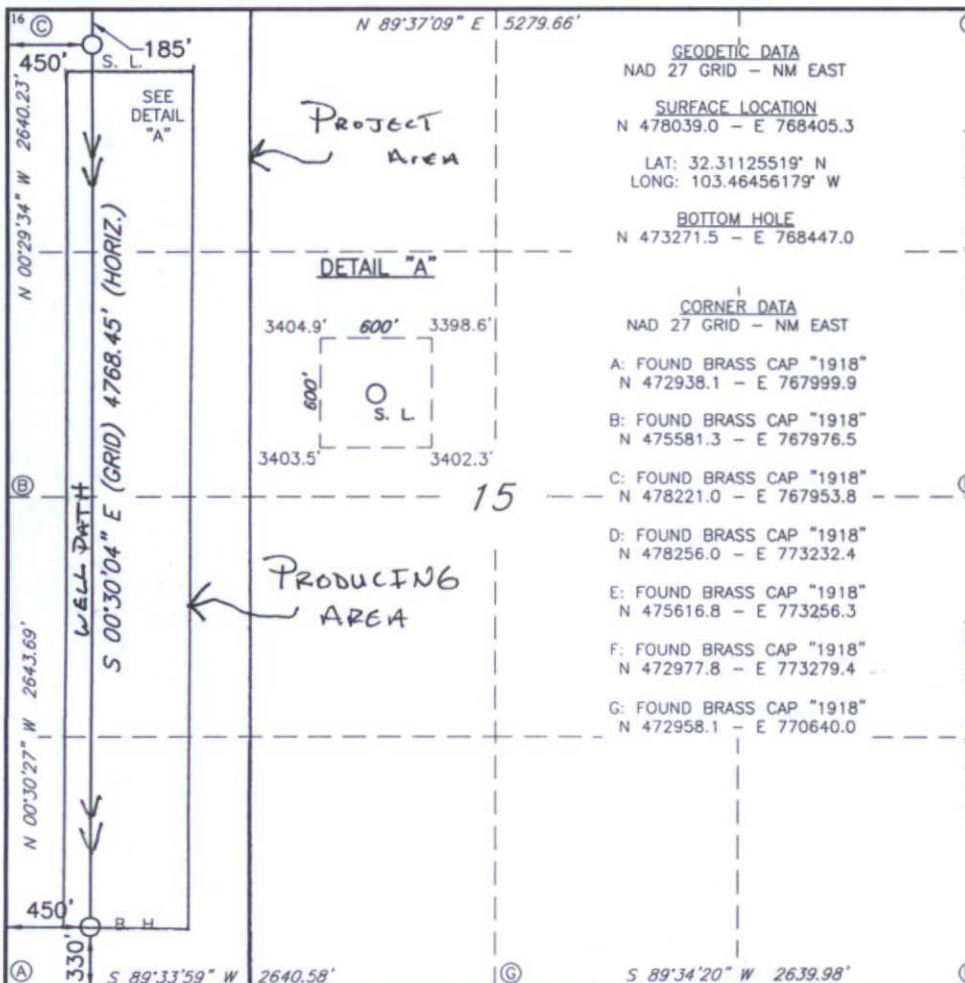
Form C-102  
Revised August 1, 2011  
Submit one copy to appropriate  
District Office

☐ AMENDED REPORT

WELL LOCATION AND ACREAGE DEDICATION PLAT

1 API Number <b>30-025-42968</b>		2 Pool Code <b>2209</b>		3 Pool Name <b>ANTELOPE RIDGE WEST BONE SPRING</b>					
4 Property Code <b>715683</b>		5 Property Name <b>PRONGHORN 15 B3DM FED COM</b>				6 Well Number <b>1H</b>			
7 OGRID NO. <b>14744</b>		8 Operator Name <b>MEWBOURNE OIL COMPANY</b>				9 Elevation <b>3402'</b>			
10 Surface Location									
UL or lot no. <b>D</b>	Section <b>15</b>	Township <b>23S</b>	Range <b>34E</b>	Lot Idn	Feet from the <b>185</b>	North/South line <b>NORTH</b>	Feet From the <b>450</b>	East/West line <b>WEST</b>	County <b>LEA</b>
11 Bottom Hole Location If Different From Surface									
UL or lot no. <b>M</b>	Section <b>15</b>	Township <b>23S</b>	Range <b>34E</b>	Lot Idn	Feet from the <b>330</b>	North/South line <b>SOUTH</b>	Feet from the <b>450</b>	East/West line <b>WEST</b>	County <b>LEA</b>
12 Dedicated Acres <b>160</b>		13 Joint or Infill		14 Consolidation Code		15 Order No.			

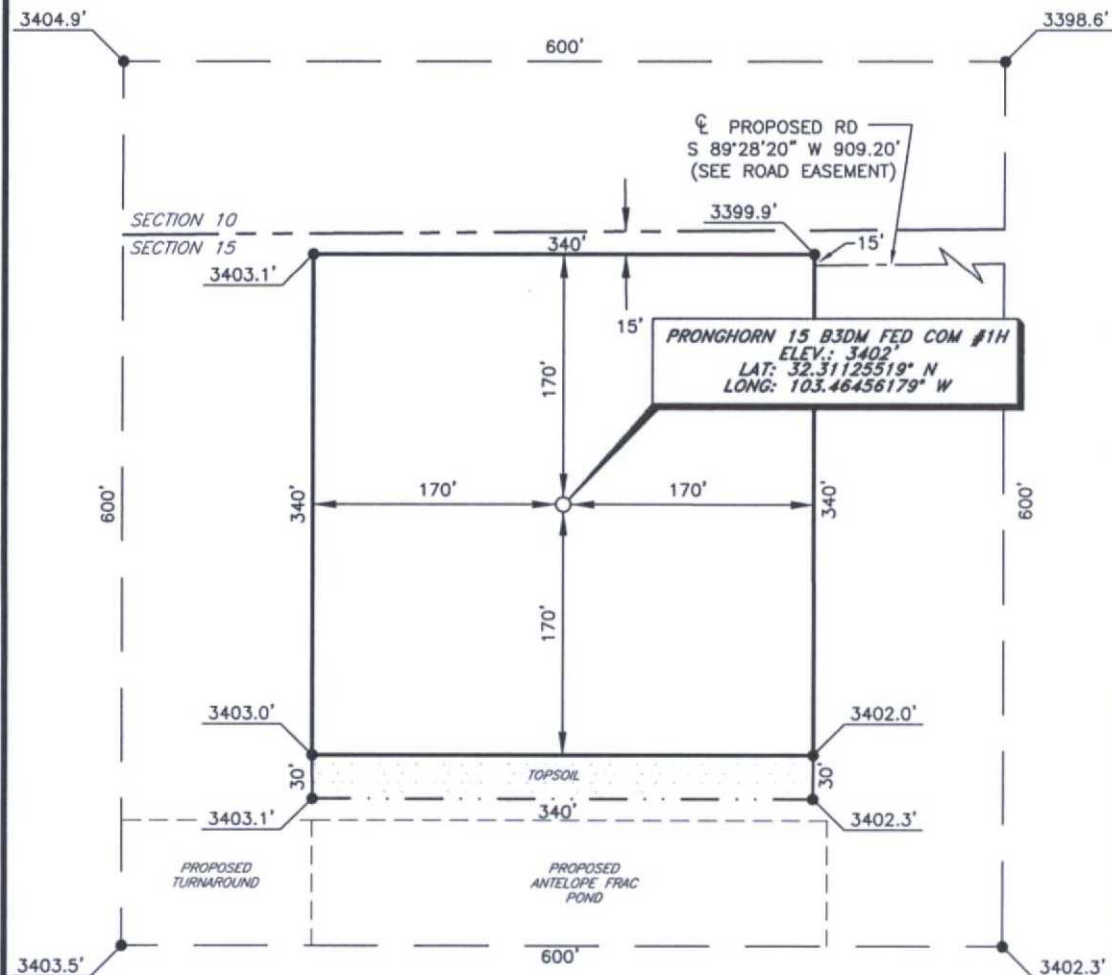
No allowable will be assigned to this completion until all interest have been consolidated or a non-standard unit has been approved by the division.

		<p>17 OPERATOR CERTIFICATION</p> <p>I hereby certify that the information contained herein is true and complete to the best of my knowledge and belief, and that this organization either owns a working interest or unleased mineral interest in the land including the proposed bottom hole location or has a right to drill this well at this location pursuant to a contract with an owner of such a mineral or working interest, or to a voluntary pooling agreement or a compulsory pooling order heretofore entered by the division.</p> <p>Signature: <b>BRADLEY R. SNAPE</b> Date: <b>6-3-15</b></p> <p>Printed Name: <b>BRADLEY R. SNAPE</b></p> <p>E-mail Address: _____</p>	
<p>18 SURVEYOR CERTIFICATION</p> <p>I hereby certify that the well location shown on this plat was plotted from field notes of actual surveys made by me or under my supervision, and that the same is true and correct to the best of my belief.</p> <p><b>4-29-15</b></p> <p>Date of Survey</p> <p>Signature and Seal of Professional Surveyor: <b>ROBERT M. HOWETT</b></p> <p><b>19680</b></p> <p>Certificate Number</p>		<p>19680</p>	

RRC - Firm No.: TX 10193838 NM 4655451 - Job No.: LS1504152

DEC 01 2015

**MEWBOURNE OIL COMPANY**  
**PRONGHORN 15 B3DM FED COM #1H**  
 (185' FNL & 450' FWL)  
 SECTION 15, T23S, R34E  
 N. M. P. M., LEA CO., NEW MEXICO



DIRECTIONS TO LOCATION

*From the intersection of CR-21 (Delaware Basin Road) and CR-E21 (Adobe Road);  
 Go South on CR-E21 for approx. 1.1 miles to proposed road on right;  
 Turn right and follow proposed road West approx. 0.5 miles;  
 Location is on the left.*



Firm No.: TX 10193838 NM 4655451

Copyright 2015 - All Rights Reserved

NO.	REVISION	DATE
JOB NO.:	LS1504152	
DWG. NO.:	1504152PAD	

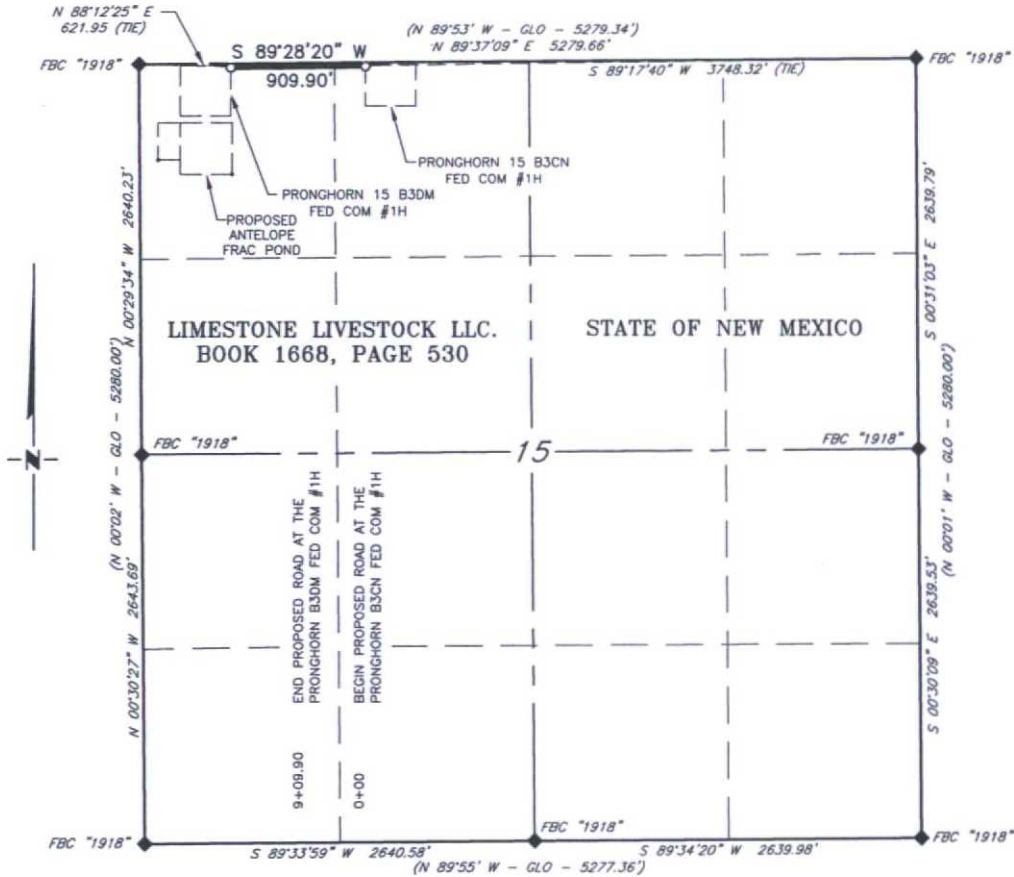
**RRC**

308 W. BROADWAY ST., HOBBS, NM 88240 (575) 964-8200

SCALE: 1" = 100'
DATE: 4-29-15
SURVEYED BY: ML/AA
DRAWN BY: JC
APPROVED BY: RMH
SHEET : 1 OF 2



**MEWBOURNE OIL COMPANY**  
**PROPOSED ACCESS ROAD FOR THE PRONGHORN B3DM FED COM #1H**  
**SECTION. 15, T23S, R34E,**  
**N. M. P. M., LEA CO., NEW MEXICO**



**DESCRIPTION**

A strip of land 20 feet wide, being 909.90 feet or 55.145 rods in length lying in Section 15, Township 23 South, Range 34 East, N. M. P. M., Lea County, New Mexico, being 10 feet left and 10 feet right of the following described survey of a centerline across the lands of Limestone Livestock, LLC., as recorded in Book 1668, Page 530, of the Deed Records of Lea County, New Mexico:

BEGINNING at Engr. Sta. 0+00, a point on the Northwest quarter, of Section 15, which bears S 89°17'40" W 3,748.32 feet from a brass cap, stamped "1918", found for the Northeast corner of Section 15;

Thence S 89°28'20" W, 909.90 feet, to Engr. Sta. 9+09.90, the End of Survey, a point which bears S 88°12'25" E, 621.95 feet from a brass cap, stamped "1918", found for the Northwest corner of Section 15.

Said strip of land contains 0.418 acres, more or less, and is allocated by forties as follows::

NE 1/4 NW 1/4	12.797 Rods	0.097 Acres
NW 1/4 NW 1/4	42.348 Rods	0.321 Acres

SCALE: 1" = 1000'  
0 500 1000

BEARINGS ARE GRID NAD 27  
NM EAST  
DISTANCES ARE HORIZ. GROUND.

**LEGEND**

( ) RECORD DATA - GLO  
◆ FOUND MONUMENT AS NOTED  
— PROPOSED ROAD  
— EXISTING BPL

I, R. M. Howett, a N. M. Professional Surveyor, hereby certify that I prepared this plat from an actual survey made on the ground under my direct supervision, said survey and plat meet the Min. Stds. for Land Surveying in the State of N. M. and are true and correct to the best of my knowledge and belief.

*Robert M. Howett*  
Robert M. Howett NM PS 19680



Firm No.: TX 10193838 NM 4655451

Copyright 2014 - All Rights Reserved

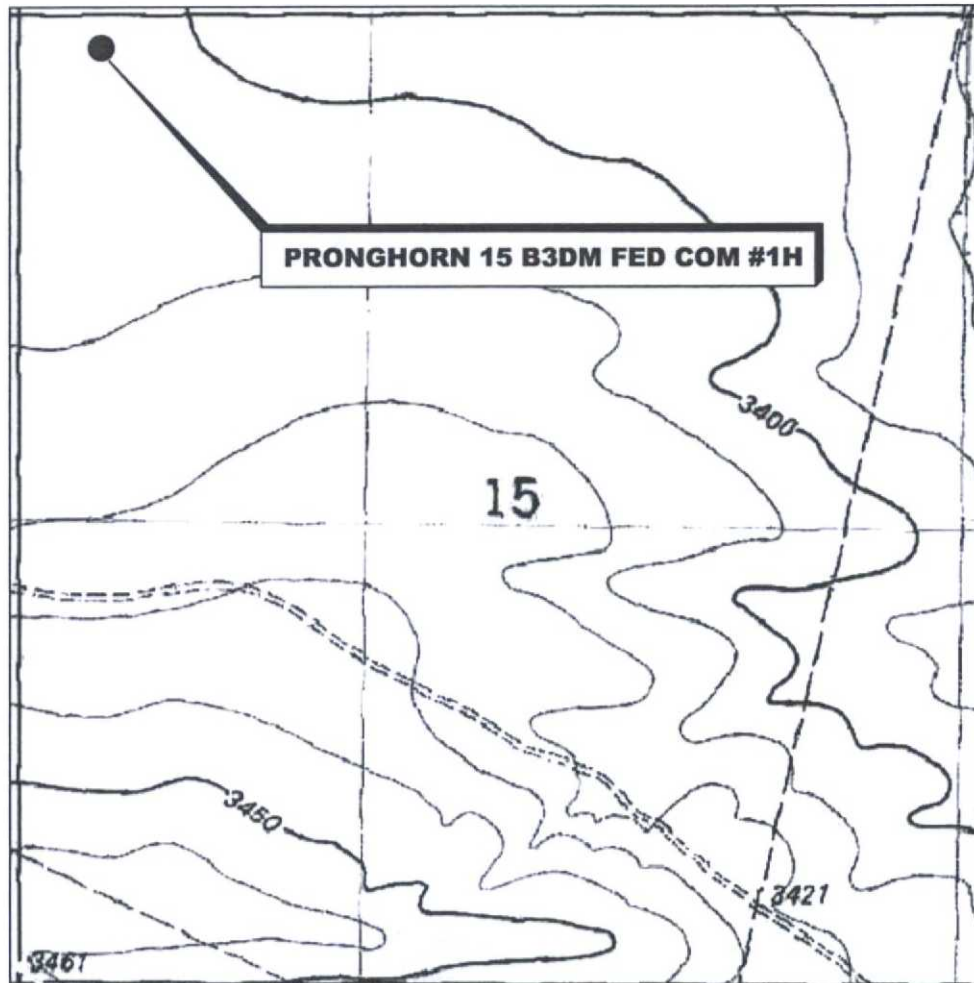
NO.	REVISION	DATE
JOB NO.:	LS1504152	
DWG. NO.:	1504152RD1	

**RRC**

308 W. BROADWAY ST., HOBBS, NM 88240 (575) 964-8200

SCALE:	1"=1000'
DATE:	4-29-15
SURVEYED BY:	ML/AA
DRAWN BY:	JC
APPROVED BY:	RMH
SHEET :	2 of 2

# LOCATION VERIFICATION MAP



*SECTION 15, TWP. 23 SOUTH, RGE. 34 EAST,  
N. M. P. M., LEA COUNTY, NEW MEXICO*

OPERATOR: Mewbourne Oil Company  
LEASE: Pronghorn 15 B3DM Fed Com  
WELL NO.: 1H  
ELEVATION: 3402'

LOCATION: 185' FNL & 450' FWL  
CONTOUR INTERVAL: 10'  
USGS TOPO. SOURCE MAP:  
San Simon Sink, NM (1984)

Firm No.: TX 10193838 NM 4655451

Copyright 2015 - All Rights Reserved

NO.	REVISION	DATE
JOB NO.:	LS1504152	
DWG. NO.:	1504152LVM	

## RRC

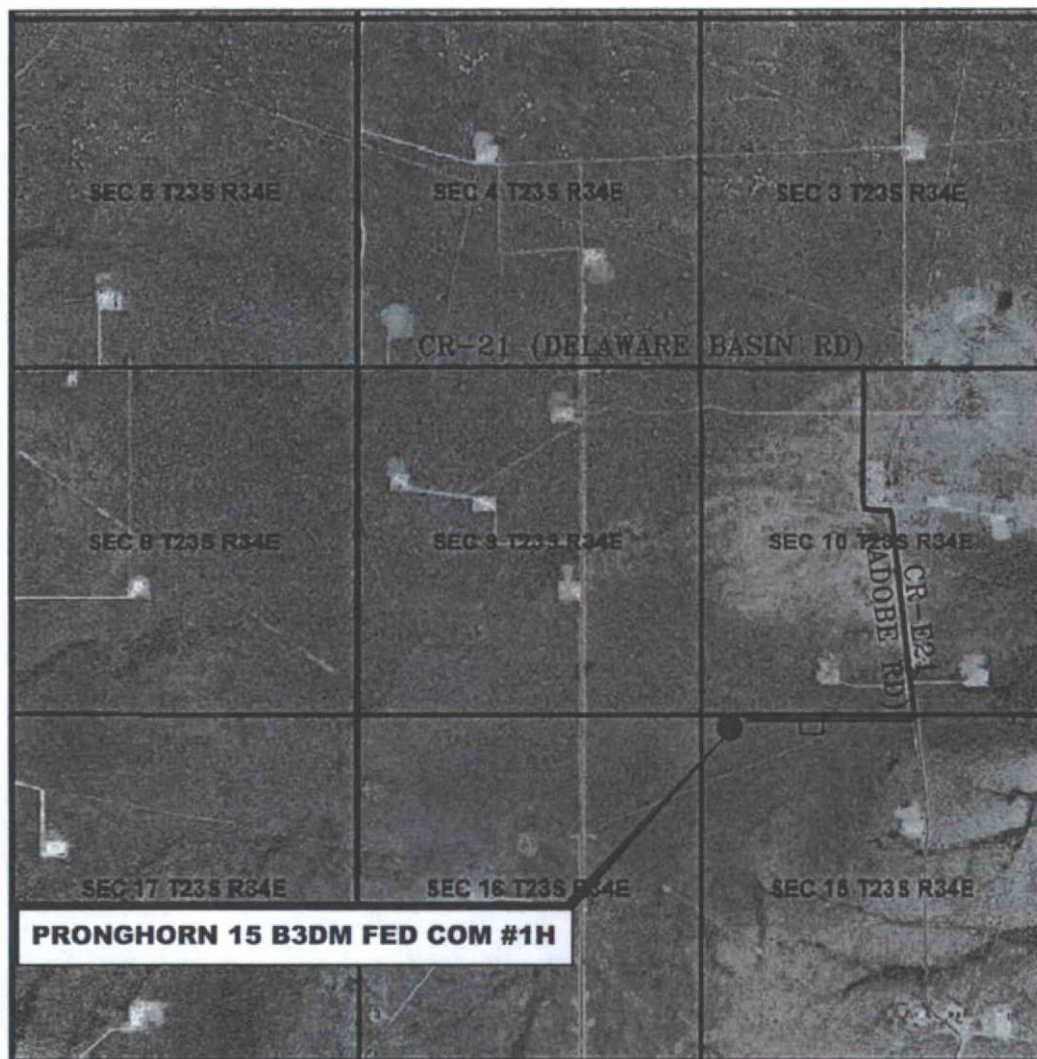
308 W. BROADWAY ST., HOBBS, NM 88240 (575) 964-8200

SCALE: 1" = 1000'  
DATE: 4-29-15  
SURVEYED BY: ML/AA  
DRAWN BY: JC  
APPROVED BY: RMH  
SHEET : 1 OF 1



# VICINITY MAP

NOT TO SCALE



*SECTION 15, TWP. 23 SOUTH, RGE. 34 EAST,  
N. M. P. M., LEA COUNTY, NEW MEXICO*

OPERATOR: Mewbourne Oil Company  
LEASE: Pronghorn 15 B3DM Fed Com  
WELL NO.: 1H

LOCATION: 185' FNL & 450' FWL  
ELEVATION: 3402'

Firm No.: TX 10193838 NM 4655451

Copyright 2015 - All Rights Reserved

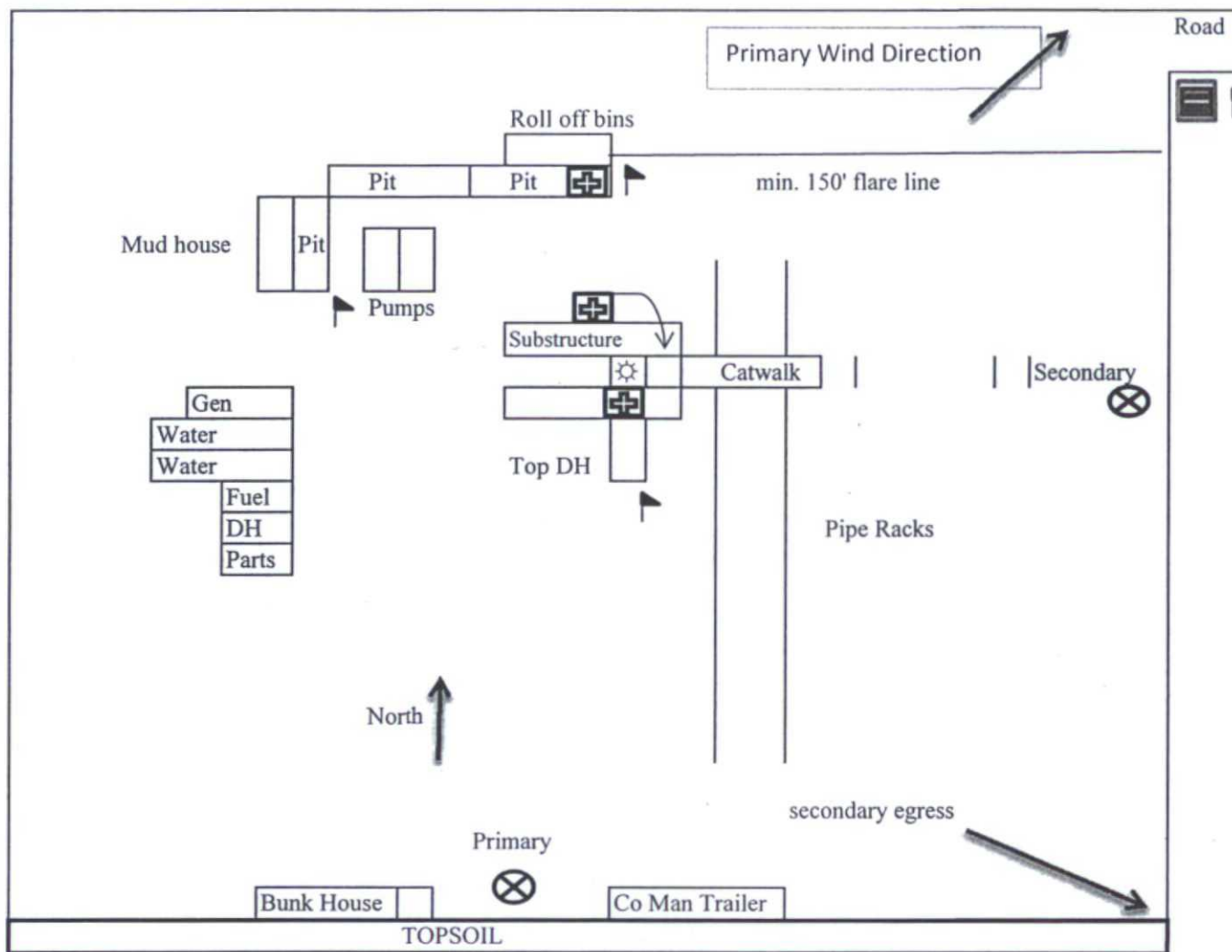
NO.	REVISION	DATE
JOB NO.:	LS1504152	
DWG. NO.:	1504152VM	

# RRC

308 W. BROADWAY ST., HOBBS, NM 88240 (575) 964-8200

SCALE: 1" = 1000'
DATE: 4-29-15
SURVEYED BY: ML/AA
DRAWN BY: JC
APPROVED BY: RMH
SHEET : 1 OF 1

H2S Diagram  
Closed Loop Pad Dimensions 340' x 340'



Mewbourne Oil Company  
Pronghorn 15 B3DM Fed Com #1H  
185' FNL & 450' FWL  
Sec. 15 T23S R34E  
Lea County, NM



= Warning Signs



= Wind Markers

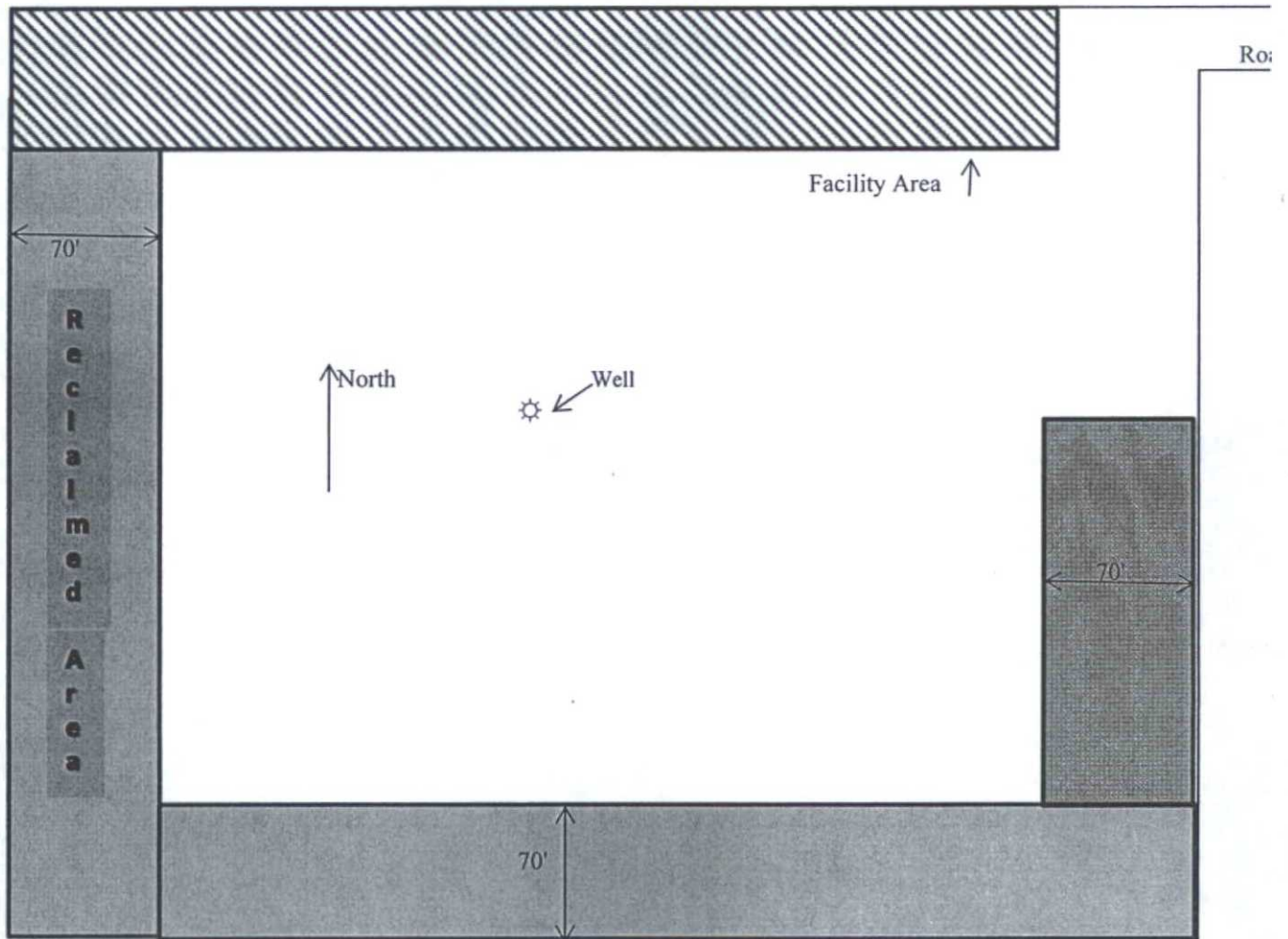


= H2S Monitors



= Safety Stations

Interim Reclamation Diagram



Mewbourne Oil Company  
Pronghorn 15 B3DM Fed Com #1H  
185' FNL & 450' FWL  
Sec 15 T23S R34E  
Lea County, NM