

Submit 1 Copy To Appropriate District
Office
District I - (575) 393-6161
1625 N. French Dr., Hobbs, NM 88240
District II - (575) 748-1283
811 S. First St., Artesia, NM 88210
District III - (505) 334-6178
1000 Rio Brazos Rd., Aztec, NM 87410
District IV - (505) 476-3460
1220 S. St. Francis Dr., Santa Fe, NM
87505

State of New Mexico
Energy, Minerals and Natural Resources

Form C-103
Revised July 18, 2013

OIL CONSERVATION DIVISION
1220 South St. Francis Dr.
Santa Fe, NM 87505

WELL API NO.
30-025-24022

5. Indicate Type of Lease
STATE FEE X

6. State Oil & Gas Lease No.

7. Lease Name or Unit Agreement Name

MATTEN B

8. Well Number
14

9. OGRID Number
4323

10. Pool name or Wildcat
GRAYBURG

SUNDRY NOTICES AND REPORTS ON WELLS

(DO NOT USE THIS FORM FOR PROPOSALS TO DRILL OR TO DEEPEN OR PLUG BACK TO A DIFFERENT RESERVOIR. USE "APPLICATION FOR PERMIT" (FORM C-101) FOR SUCH PROPOSALS.)

1. Type of Well: Oil Well X Gas Well Other

2. Name of Operator
CHEVRON U.S.A. INC. monty.mccarver@cjes.com

3. Address of Operator
1500 SMITH RD. MIDLAND, TX. 79705

4. Well Location DATUM Y- LAT 32.44443 X-LONG -103.20822
Unit Letter M : 660 feet from the SOUTH line and 660 feet from the WEST line
Section 30 Township 21-S Range 37-E NMPM County LEA

11. Elevation (Show whether DR, RKB, RT, GR, etc.)
3,519' GL

12. Check Appropriate Box to Indicate Nature of Notice, Report or Other Data

NOTICE OF INTENTION TO:

PERFORM REMEDIAL WORK ☐ PLUG AND ABANDON X
TEMPORARILY ABANDON ☐ CHANGE PLANS ☐
PULL OR ALTER CASING ☐ MULTIPLE COMPL ☐
DOWNHOLE COMMINGLE ☐
CLOSED-LOOP SYSTEM ☐
OTHER: ☐

E-PERMITTING <SWD INJECTION>
CONVERSION RBDMS
RETURN TO TA
CSNG ENVIRO CHG LOC
INT TO P&A NR P&A R
OTHER: ☐

13. Describe proposed or completed operations. (Clearly state all pertinent details, and give pertinent dates, including estimated date of starting any proposed work). SEE RULE 19.15.7.14 NMAC. For Multiple Completions: Attach wellbore diagram of proposed completion or recompletion. 8 5/8" 24# @ 1,249' TOC SURF, 5 1/2" 14 # @ 5,903' TOC 2,170' 4" LINER FROM 5,830'-6,819', PERFS 3,962'-4,025'. CIBP's @ 5,829', 4,663'.

AS EARLY AS DECEMBER 7, 2015 MOVE IN RIG & CMT EQUIPMENT, ND TREE, NU BOP & TEST. POOH TBG. & RODS

TAG CIBP @ 4663. CAP W/ 25 SXS CMT.

SET CIBP @ 3,950', RIH CIR W/ SALT GEL. MIX & SPOT 75 SX CL "C" CEMENT FROM 3,950'-3,300', WOC & TAG, TEST

MIX & SPOT 75 SX CL "C" CEMENT FROM 2,970'-2,400', WOC & TAG. (QUEEN, 7 RIVERS, B. SALT)

PERF & CIR 95 SX CL "C" CEMENT FROM 1,300'-1,000', WOC & TAG. (SHOE, ANHY)

PERF & CIR 100 SX CL "C" CEMENT FROM 300' BACK TO SURFACE.

CUT ALL CASING & ANCHORS & REMOVED 3' BELOW GRADE. WELD ON DRY HOLE MARKER. CLEAN LOCATION.

ALL CEMENT PLUGS CLASS "C", W/ CLOSED LOOP SYSTEM USED.

The Oil Conservation Division

MUST BE NOTIFIED 24 Hours

Prior to the beginning of operations

Spud Date:

Rig Release Date:

I hereby certify that the information above is true and complete to the best of my knowledge and belief.

SIGNATURE

Type or print name Monty L. McCarver E-mail address: monty.mccarver@cjes.com PHONE: 713-325-6288

For State Use Only

APPROVED BY: Makenzie Brown TITLE: Dist Supervisor DATE: 11/25/2015

Conditions of Approval (if any):

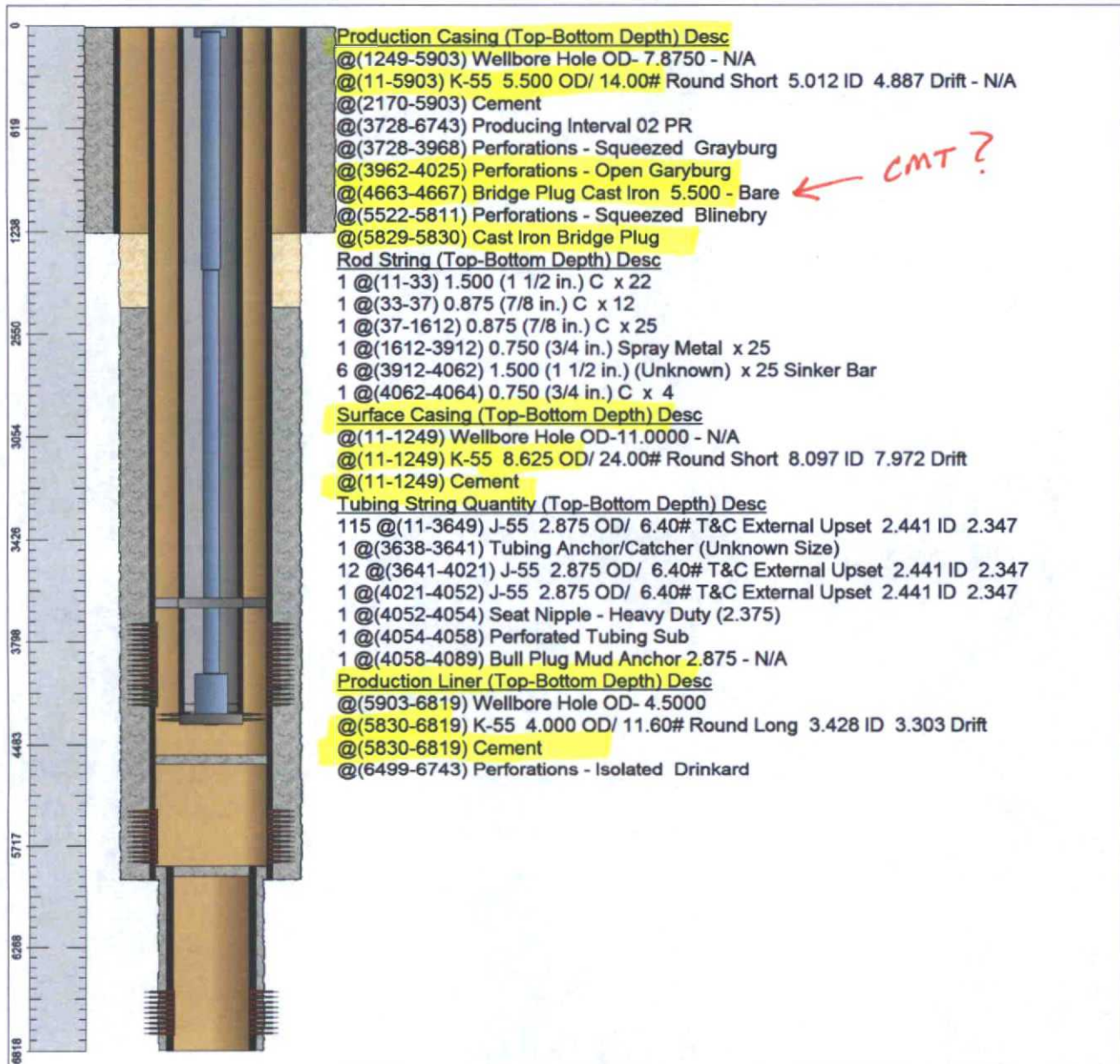
DEC 02 2015

CURRENT

Chevron U.S.A. Inc. Wellbore Diagram : MATB14GR



[Lease] OEU EUNICE FMT [Well No.] MATTERN H T /NCT-B/ 14 [Field] PENROSE SKELLY
 [Location] 660FSL660FWL [Sec.] N/A [Blk] _____ [Survey] N/A
 [County] Lea [St.] New Mexico [Refno] FG9493 [API] 3002524022 [Cost Center] UCU490300
 [Section] E037 [Township] 30 S [Range] S021 E
 [Current Status] ACTIVE [Dead Man Anchors Test Date] NONE
 [Directions] _____



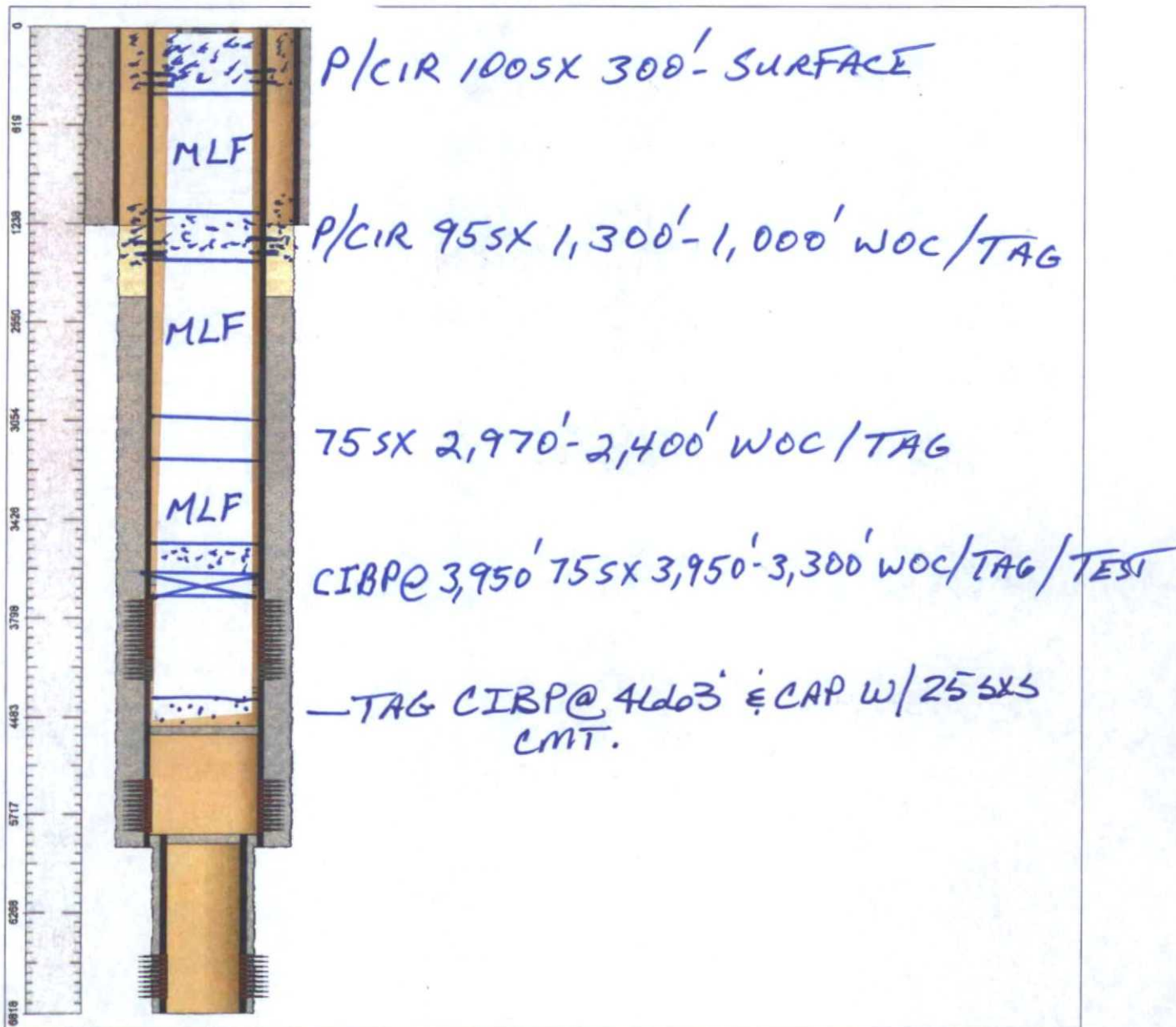
[Ground Elevation (MSL)] 3519.00 [Spud Date] 02/25/1972 [Compl. Date] 08/01/2002
 [Well Depth Datum] Kelly Bushing [Elevation (MSL)] 0.00 [Correction Factor] 11.00
 [Last Updated by] dncu [Date] 04/03/2012
 [null] null [null] null

P+A

Chevron U.S.A. Inc. Wellbore Diagram : MATB14GR



[Lease] OEU EUNICE FMT [Well No.] MATTERN H T /NCT-B/ 14 [Field] PENROSE SKELLY
 [Location] 660FSL660FWL [Sec.] N/A [Blk] _____ [Survey] N/A
 [County] Lea [St.] New Mexico [Refno] FG9493 [API] 3002524022 [Cost Center] UCU490300
 [Section] E037 [Township] 30 S [Range] S021 E
 [Current Status] ACTIVE [Dead Man Anchors Test Date] NONE
 [Directions] _____



[Ground Elevation (MSL)] 3519.00 [Spud Date] 02/25/1972 [Compl. Date] 08/01/2002
 [Well Depth Datum] Kelly Bushing [Elevation (MSL)] 0.00 [Correction Factor] 11.00
 [Last Updated by] dncu [Date] 04/03/2012
 [null] null [null] null

NO. OF COPIES RECEIVED	
DISTRIBUTION	
SANTA FE	
FILE	
U.S.G.S.	
LAND OFFICE	
OPERATOR	

Form C-105
Revised 1-1-65

NEW MEXICO OIL CONSERVATION COMMISSION WELL COMPLETION OR RECOMPLETION REPORT AND LOG

5a. Indicate Type of Lease
State ☐ Fee ☒

5. State Oil & Gas Lease No.

1a. TYPE OF WELL
OIL WELL ☒ GAS WELL ☐ DRY ☐ OTHER ☐

b. TYPE OF COMPLETION
NEW WELL ☒ WORK OVER ☐ DEEPEN ☐ PLUG BACK ☐ DIFF. RESVR. ☐ OTHER ☐

7. Unit Agreement Name

8. Farm or Lease Name
H. T. Mattern (NCT-B)

2. Name of Operator
Gulf Oil Corporation

3. Address of Operator
Box 670, Hobbs, New Mexico 88240

9. Well No.
14

10. Field and Pool, or Wildcat
Blinebry

4. Location of Well
UNIT LETTER M LOCATED 660 FEET FROM THE South LINE AND 660 FEET FROM

THE West LINE OF SEC. 30 TWP. 21-S RGE. 37-E NMPM Lea

15. Date Spudded 2-25-72 16. Date T.D. Reached 3-9-72 17. Date Compl. (Ready to Prod.) 3-14-72 18. Elevations (DF, RKB, RT, GR, etc.) 3519' GL 19. Elev. Casinghead --

20. Total Depth 5903' 21. Plug Back T.D. 5871' 22. If Multiple Compl., How Many Single 23. Intervals Drilled By Rotary Tools 0 - 5903' Cable Tools --

24. Producing Interval(s), of this completion - Top, Bottom, Name 5522 - 5811' 25. Was Directional Survey Made No

26. Type Electric and Other Logs Run GR-Acoustic 27. Was Well Cored No

28. CASING RECORD (Report all strings set in well)

CASING SIZE	WEIGHT LB./FT.	DEPTH SET	HOLE SIZE	CEMENTING RECORD	AMOUNT PULLED
8-5/8"	24#	1249'	11"	400 sacks (Circulated)	
5-1/2"	14 & 15.5#	5903'	7-7/8"	735 sacks (TOC at 2170')	

29. LINER RECORD 30. TUBING RECORD

SIZE	TOP	BOTTOM	SACKS CEMENT	SCREEN	SIZE	DEPTH SET	PACKER SET
					2-3/8"	5663'	--

31. Perforation Record (Interval, size and number)
Perforated 5-1/2" casing with 2, 1/2" JHPF at 5522-26', 550-54', 5576-80', 5622-26' 5651-55' and 5807-11'.

32. ACID, SHOT, FRACTURE, CEMENT SQUEEZE, ETC.

DEPTH INTERVAL	AMOUNT AND KIND MATERIAL USED
5522-5811'	1500 gal 15% NE acid & frac treated with 36,000 gal gel water containing 0 to 3# SPG

33. PRODUCTION

Date First Production 3-14-72 Production Method (Flowing, gas lift, pumping - Size and type pump) Flowing Well Status (Prod. or Shut-in) Producing

Date of Test	Hours Tested	Choke Size	Prod'n. For Test Period	Oil - Bbl.	Gas - MCF	Water - Bbl.	Gas - Oil Ratio
3-15-72	21	40/64"		200	--	580 (Load)	--

Flow Tubing Press.	Casing Pressure	Calculated 24-Hour Rate	Oil - Bbl.	Gas - MCF	Water - Bbl.	Oil Gravity - API (Corr.)
300#	1700#		229	--	--	

34. Disposition of Gas (Sold, used for fuel, vented, etc.) Sold Test Witnessed By J. R. Tate

35. List of Attachments

36. I hereby certify that the information shown on both sides of this form is true and complete to the best of my knowledge and belief.

SIGNED C. D. Kallinger TITLE Area Engineer DATE March 15, 1972

1998, 1999, 2000, 2001, 2002, 2003, 2004, 2005, 2006, 2007, 2008, 2009, 2010, 2011, 2012, 2013, 2014, 2015, 2016, 2017, 2018, 2019, 2020, 2021, 2022, 2023, 2024, 2025, 2026, 2027, 2028, 2029, 2030, 2031, 2032, 2033, 2034, 2035, 2036, 2037, 2038, 2039, 2040, 2041, 2042, 2043, 2044, 2045, 2046, 2047, 2048, 2049, 2050, 2051, 2052, 2053, 2054, 2055, 2056, 2057, 2058, 2059, 2060, 2061, 2062, 2063, 2064, 2065, 2066, 2067, 2068, 2069, 2070, 2071, 2072, 2073, 2074, 2075, 2076, 2077, 2078, 2079, 2080, 2081, 2082, 2083, 2084, 2085, 2086, 2087, 2088, 2089, 2090, 2091, 2092, 2093, 2094, 2095, 2096, 2097, 2098, 2099, 2100, 2101, 2102, 2103, 2104, 2105, 2106, 2107, 2108, 2109, 2110, 2111, 2112, 2113, 2114, 2115, 2116, 2117, 2118, 2119, 2120, 2121, 2122, 2123, 2124, 2125, 2126, 2127, 2128, 2129, 2130, 2131, 2132, 2133, 2134, 2135, 2136, 2137, 2138, 2139, 2140, 2141, 2142, 2143, 2144, 2145, 2146, 2147, 2148, 2149, 2150, 2151, 2152, 2153, 2154, 2155, 2156, 2157, 2158, 2159, 2160, 2161, 2162, 2163, 2164, 2165, 2166, 2167, 2168, 2169, 2170, 2171, 2172, 2173, 2174, 2175, 2176, 2177, 2178, 2179, 2180, 2181, 2182, 2183, 2184, 2185, 2186, 2187, 2188, 2189, 2190, 2191, 2192, 2193, 2194, 2195, 2196, 2197, 2198, 2199, 2200, 2201, 2202, 2203, 2204, 2205, 2206, 2207, 2208, 2209, 2210, 2211, 2212, 2213, 2214, 2215, 2216, 2217, 2218, 2219, 2220, 2221, 2222, 2223, 2224, 2225, 2226, 2227, 2228, 2229, 2230, 2231, 2232, 2233, 2234, 2235, 2236, 2237, 2238, 2239, 2240, 2241, 2242, 2243, 2244, 2245, 2246, 2247, 2248, 2249, 2250, 2251, 2252, 2253, 2254, 2255, 2256, 2257, 2258, 2259, 2260, 2261, 2262, 2263, 2264, 2265, 2266, 2267, 2268, 2269, 2270, 2271, 2272, 2273, 2274, 2275, 2276, 2277, 2278, 2279, 2280, 2281, 2282, 2283, 2284, 2285, 2286, 2287, 2288, 2289, 2290, 2291, 2292, 2293, 2294, 2295, 2296, 2297, 2298, 2299, 2300, 2301, 2302, 2303, 2304, 2305, 2306, 2307, 2308, 2309, 2310, 2311, 2312, 2313, 2314, 2315, 2316, 2317, 2318, 2319, 2320, 2321, 2322, 2323, 2324, 2325, 2326, 2327, 2328, 2329, 2330, 2331, 2332, 2333, 2334, 2335, 2336, 2337, 2338, 2339, 2340, 2341, 2342, 2343, 2344, 2345, 2346, 2347, 2348, 2349, 2350, 2351, 2352, 2353, 2354, 2355, 2356, 2357, 2358, 2359, 2360, 2361, 2362, 2363, 2364, 2365, 2366, 2367, 2368, 2369, 2370, 2371, 2372, 2373, 2374, 2375, 2376, 2377, 2378, 2379, 2380, 2381, 2382, 2383, 2384, 2385, 2386, 2387, 2388, 2389, 2390, 2391, 2392, 2393, 2394, 2395, 2396, 2397, 2398, 2399, 2400, 2401, 2402, 2403, 2404, 2405, 2406, 2407, 2408, 2409, 2410, 2411, 2412, 2413, 2414, 2415, 2416, 2417, 2418, 2419, 2420, 2421, 2422, 2423, 2424, 2425, 2426, 2427, 2428, 2429, 2430, 2431, 2432, 2433, 2434, 2435, 2436, 2437, 2438, 2439, 2440, 2441, 2442, 2443, 2444, 2445, 2446, 2447, 2448, 2449, 2450, 2451, 2452, 2453, 2454, 2455, 2456, 2457, 2458, 2459, 2460, 2461, 2462, 2463, 2464, 2465, 2466, 2467, 2468, 2469, 2470, 2471, 2472, 2473, 2474, 2475, 2476, 2477, 2478, 2479, 2480, 2481, 2482, 2483, 2484, 2485, 2486, 2487, 2488, 2489, 2490, 2491, 2492, 2493, 2494, 2495, 2496, 2497, 2498, 2499, 2500, 2501, 2502, 2503, 2504, 2505, 2506, 2507, 2508, 2509, 2510, 2511, 2512, 2513, 2514, 2515, 2516, 2517, 2518, 2519, 2520, 2521, 2522, 2523, 2524, 2525, 2526, 2527, 2528, 2529, 2530, 2531, 2532, 2533, 2534, 2535, 2536, 2537, 2538, 2539, 2540, 2541, 2542, 2543, 2544, 2545, 2546, 2547, 2548, 2549, 2550, 2551, 2552, 2553, 2554, 2555, 2556, 2557, 2558, 2559, 2560, 2561, 2562, 2563, 2564, 2565, 2566, 2567, 2568, 2569, 2570, 2571, 2572, 2573, 2574, 2575, 2576, 2577, 2578, 2579, 2580, 2581, 2582, 2583, 2584, 2585, 2586, 2587, 2588, 2589, 2590, 2591, 2592, 2593, 2594, 2595, 2596, 2597, 2598, 2599, 2600, 2601, 2602, 2603, 2604, 2605, 2606, 2607, 2608, 2609, 2610, 2611, 2612, 2613, 2614, 2615, 2616, 2617, 2618, 2619, 2620, 2621, 2622, 2623, 2624, 2625, 2626, 2627, 2628, 2629, 2630, 2631, 2632, 2633, 2634, 2635, 2636, 2637, 2638, 2639, 2640, 2641, 2642, 2643, 2644, 2645, 2646, 2647, 2648, 2649, 2650, 2651, 2652, 2653, 2654, 2655, 2656, 2657, 2658, 2659, 2660, 2661, 2662, 2663, 2664, 2665, 2666, 2667, 2668, 2669, 2670, 2671, 2672, 2673, 2674, 2675, 2676, 2677, 2678, 2679, 26

• • •

INDICATE FORMATION TOPS IN CONFORMANCE WITH GEOGRAPHICAL SECTION OF STATE

Southeastern New Mexico

Northwestern New Mexico

T. Anhy	1196'	T. Canyon	T. Ojo Alamo	T. Penn. "B"
T. Salt		T. Strawn	T. Kirtland-Fruitland	T. Penn. "C"
B. Salt	2506'	T. Atoka	T. Pictured Cliffs	T. Penn. "D"
T. Yates	2650'	T. Miss	T. Cliff House	T. Leadville
T. 7 Rivers	2920'	T. Devonian	T. Menefee	T. Madison
T. Queen	3412'	T. Silurian	T. Point Lookout	T. Elbert
T. Grayburg	3673'	T. Montoya	T. Mancos	T. McCracken
T. San Andres	4000'	T. Simpson	T. Gallup	T. Ignacio Qtzite
T. Glorieta		T. McKee	Base Greenhorn	T. Granite
T. Paddock		T. Ellenburger	T. Dakota	T.
T. Blinebry	5518'	T. Gr. Wash	T. Morrison	T.
T. Tubb		T. Granite	T. Todilto	T.
T. Drinkard		T. Delaware Sand	T. Entrada	T.
T. Abo		T. Bone Springs	T. Wingate	T.
T. Wolfcamp		T.	T. Chinle	T.
T. Penn.		T.	T. Permian	T.
T. Cisco (Bough C)		T.	T. Penn. "A"	T.

FORMATION RECORD (Attach additional sheets if necessary)

From	To	Thickness in Feet	Formation	From	To	Thickness in Feet	Formation
0	1196'		Red Beds				
	2506'		Anhy & Salt				
	3673'		Anhy & Sand				
	5170'		Lime				
	5518'		Lime & Sand				
	5903'		Lime				

RECEIVED

MAR 16 1972

OIL CONSERVATION COMM.

HOBBS, N. M.

RECEIVED

MAR 16 1972

OIL CONSERVATION COMM.
HOBBS, N. M.