

DEC 03 2015

H₂S Drilling Operations Plan

RECEIVED

- a. All personnel will be trained in H₂S working conditions as required by Onshore Order 6 before drilling out of the surface casing.
- b. Two briefing areas will be established. Each briefing area will be $\geq 150'$ from the wellhead, perpendicular from one another, and easily entered and exited. See H₂S page 5 for more details.
- c. H₂S Safety Equipment/Systems:
 - i. Well Control Equipment
 - Flare line will be $\geq 150'$ from the wellhead and ignited by a flare gun.
 - Beware of SO₂ created by flaring.
 - Choke manifold will include a remotely operated choke.
 - Mud gas separator
 - ii. Protective Equipment for Personnel
 - Every person on site will be required to wear a personal H₂S and SO₂ monitor at all times while on site. Monitors will not be worn on hard hats. Monitors will be worn on the front of the waist or chest.
 - One self-contained breathing apparatus (SCBA) 30-minute rescue pack will be at each briefing area. Two 30-minute SCBA packs will be stored in the safety trailer.
 - Four work/escape packs will be on the rig floor. Each pack will have a long enough hose to allow unimpaired work activity.
 - Four emergency escape packs will be in the doghouse for emergency evacuation.
 - Hand signals will be used when wearing protective breathing apparatus.
 - Stokes litter or stretcher
 - Two full OSHA compliant body harnesses
 - A 100 foot long x 5/8 inch OSHA compliant rope
 - One 20 pound ABC fire extinguisher
 - iii. H₂S Detection & Monitoring Equipment
 - Every person on site will be required to wear a personal H₂S and SO₂ monitor at all times while on site. Monitors will not be worn on hard hats. Monitors will be worn on the front of the waist or chest.
 - A stationary detector with three sensors will be in the doghouse.

DEC 03 2015

- Sensors will be installed on the rig floor, bell nipple, and at the end of the flow line or where drilling fluids are discharged.
- Visual alarm will be triggered at 10 ppm.
- Audible alarm will be triggered at 10 ppm.
- Calibration will occur at least every 30 days. Gas sample tubes will be kept in the safety trailer.

iv. Visual Warning System

- Color-coded H₂S condition sign will be set at the entrance to the pad.
- Color-coded condition flag will be installed to indicate current H₂S conditions.
- Two wind socks will be installed that will be visible from all sides.

v. Mud Program

- A water based mud with a pH of ≥ 10 will be maintained to control corrosion, H₂S gas returns to the surface, and minimize sulfide stress cracking and embrittlement.
- Drilling mud containing H₂S gas will be degassed at an optimum location for the rig configuration.
- This gas will be piped into the flare system.
- Enough mud additives will be on location to scavenge and/or neutralize H₂S where formation pressures are unknown.

vi. Metallurgy

- All equipment that has the potential to be exposed to H₂S will be suitable for H₂S service.
- Equipment that will meet these metallurgical standards include the drill string, casing, wellhead, BOP assembly, casing head and spool, rotating head, kill lines, choke, choke manifold and lines, valves, mud-gas separators, DST tools, test units, tubing, flanges, and other related equipment (elastomer packings and seals).

vii. Communication from well site

- Cell phones and/or two-way radios will be used to communicate from the well site.

d. A remote controlled choke, mud-gas separator, and a rotating head will be installed before drilling or testing any formation expected to contain H₂S.

Company Personnel to be Notified

John Pool, Vice President

Office: (432) 685-1761

Free: (800) 344-1761

Mobile: (432) 559-2987

Local & County Agencies

Monument Fire Department

911 or (575) 393-4339

Hobbs Fire Marshal

(575) 391-8185

Lea County Sheriff (Lovington)

911 (575) 396-3611

Lea County Emergency Management (Lovington)

(575) 396-8602

Lea Regional Medical Center Hospital (Hobbs)

(575) 492-5000

State Agencies

NM State Police (Hobbs)

(575) 392-5588

NM Oil Conservation (Hobbs)

(575) 370-3186

NM Oil Conservation (Santa Fe)

(505) 476-3440

NM Dept. of Transportation (Roswell)

(575) 637-7201

Federal Agencies

BLM Carlsbad Field Office

(575) 234-5972

BLM Hobbs Field Station

(575) 393-3612

National Response Center

(800) 424-8802

US EPA Region 6 (Dallas)

(800) 887-6063

(214) 665-6444

Veterinarians

Dal Paso Animal Hospital (Hobbs)	(575) 397-2286
Hobbs Animal Clinic & Pet Care (Hobbs)	(575) 392-5563
Great Plains Veterinary Clinic & Hospital (Hobbs)	(575) 392-5513

Residents within 2 miles

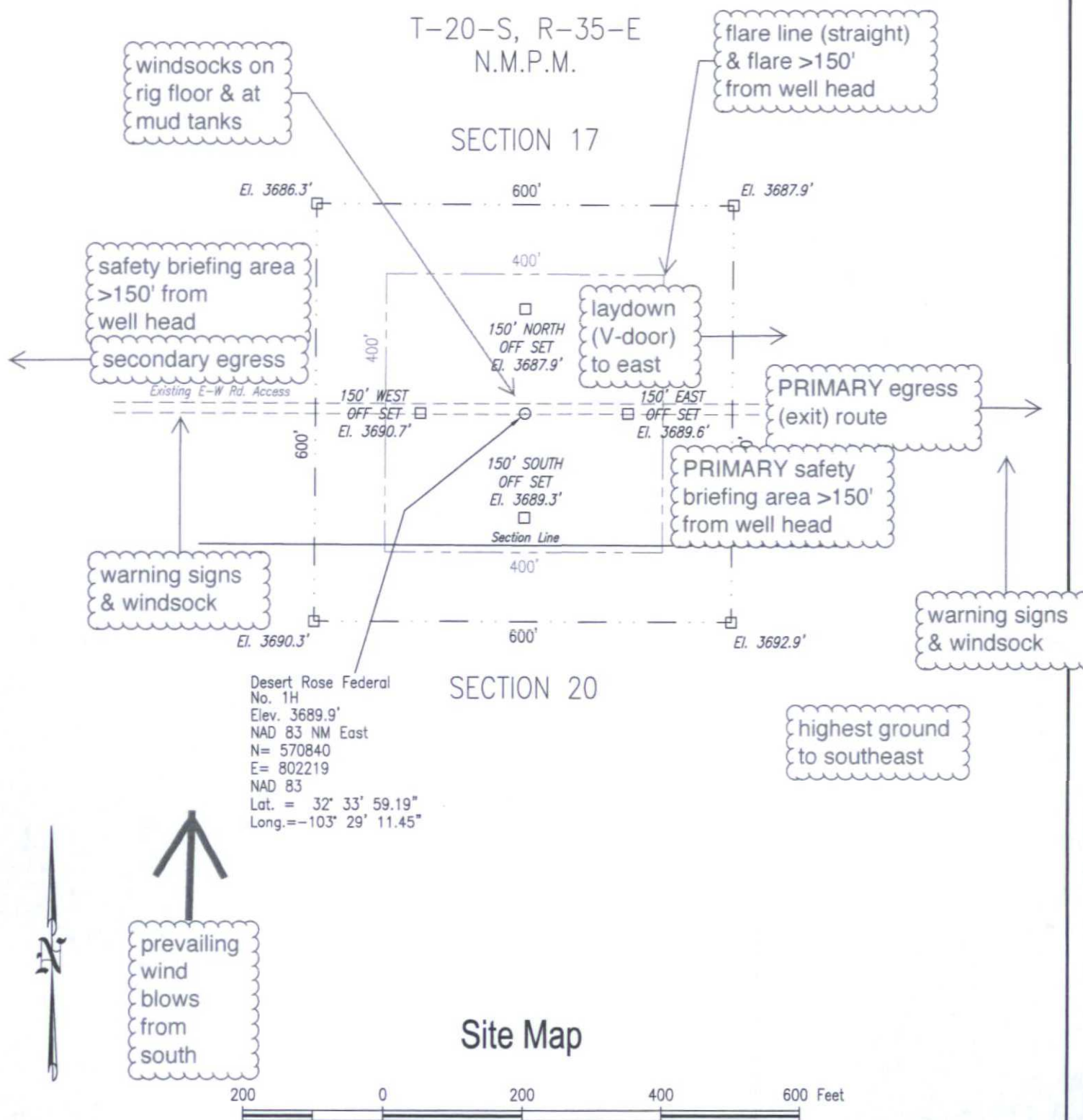
There are no residents within 2 miles.

Air Evacuation

Med Flight Air Ambulance (Albuquerque)	(800) 842-4431
Lifeguard (Albuquerque)	(888) 866-7256

T-20-S, R-35-E
N.M.P.M.

SECTION 17



SDX Resources, Inc.

Desert Rose Federal No. 1H - 190' FSL & 467' FWL
Section 17, T-20-S, R-35-E, N.M.P.M.,
Lea County, New Mexico

STANFORD SURVEYING COMPANY

P.O. BOX 8490

MIDLAND, TEXAS 79708-8490

TBPLS Firm No. 10128400

432-699-5708

DRAWN BY Adam Welch

DATE 10-16-2014

SCALE 1" = 200'

FILE NAME A-9642a_Rev

SDX Resources, LLC

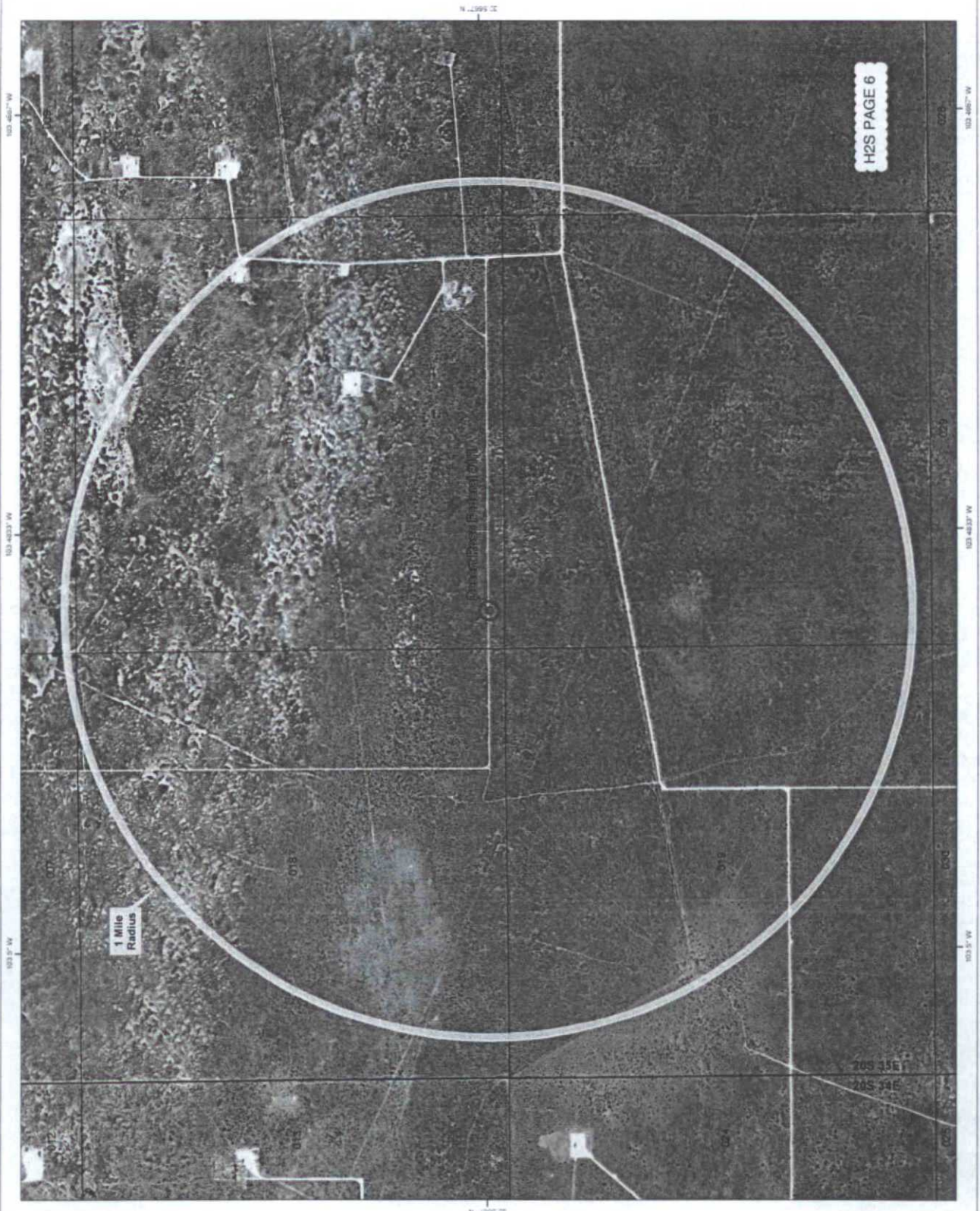
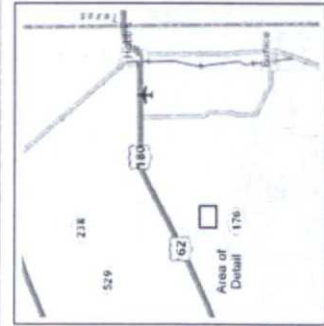
Desert Rose Federal #1H
H2S Contingency Plan:
1 Mile Radius Map
Section 17, Township 20S, Range 35E
Lea County, New Mexico



NAD 1983 New Mexico State Plane East
FIPS 5001 Feet

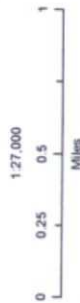


Prepared by Perritts West, Inc. April 20, 2015
for SDX Resources, LLC



SDX Resources, LLC

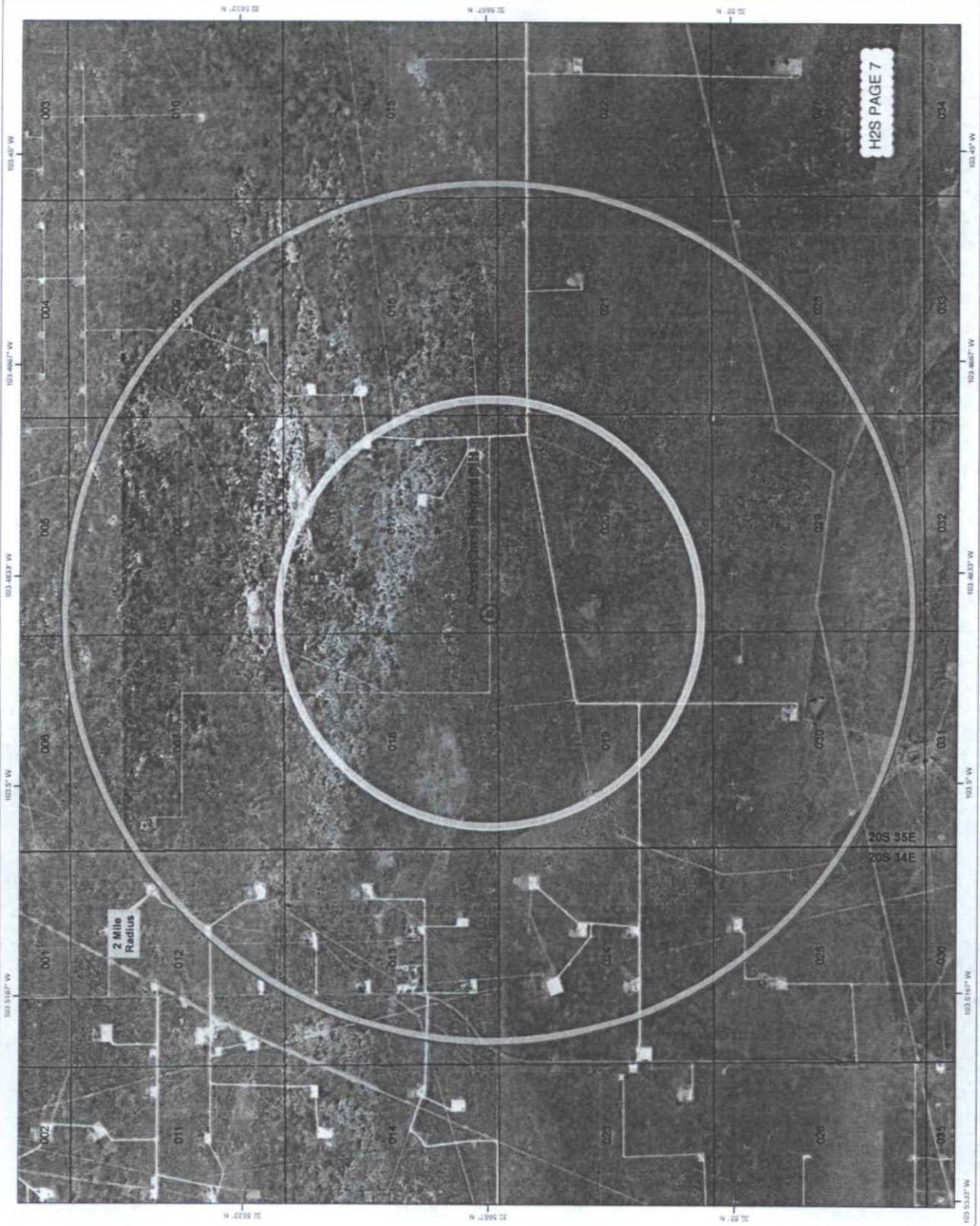
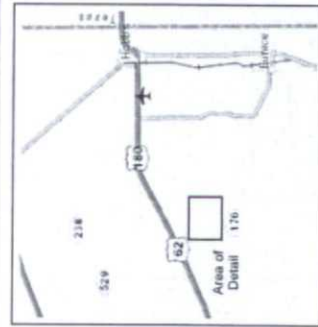
Desert Rose Federal #1H
H₂S Contingency Plan:
2 Mile Radius Map
Section 17, Township 20S, Range 35E
Lea County, New Mexico



NAD 1983 New Mexico State Plane East
FIPS 3001 Feet

PERMITS WEST
LLC

Prepared by Permits West, Inc., April 20, 2015
for SDX Resources, LLC



HOBBS OGD

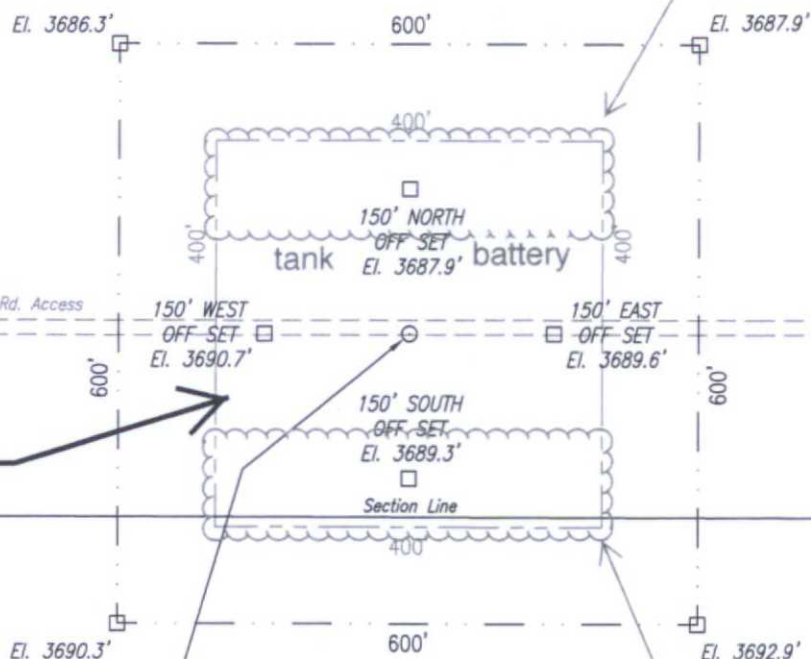
DEC 03 2015

RECEIVED

Interim Reclamation & Production Diagram

T-20-S, R-35-E
N.M.P.M.

SECTION 17

interim reclamation
100' x 400'200' x 400'
left for production
& operationsinterim reclamation
100' x 400'

Desert Rose Federal
No. 1H
Elev. 3689.9'
NAD 83 NM East
N= 570840
E= 802219
NAD 83
Lat. = 32° 33' 59.19"
Long. = -103° 29' 11.45"

SECTION 20

Site Map

200 0 200 400 600 Feet

SDX Resources, Inc.

Desert Rose Federal No. 1H - 190' FSL & 467' FWL
Section 17, T-20-S, R-35-E, N.M.P.M.,
Lea County, New Mexico

STANFORD SURVEYING COMPANY

P.O. BOX 8490

MIDLAND, TEXAS 79708-8490

TBPLS Firm No. 10128400

432-699-5708

DRAWN BY Adam Welch

DATE 10-16-2014

SCALE 1" = 200'

FILE NAME A-9642a_Rev