

UNITED STATES
DEPARTMENT OF THE INTERIOR
BUREAU OF LAND MANAGEMENTFORM APPROVED
OMB NO. 1004-0135
Expires: July 31, 2010**SUNDRY NOTICES AND REPORTS ON WELLS**
*Do not use this form for proposals to drill or to re-enter an abandoned well. Use form 3160-3 (APD) for such proposals.*5. Lease Serial No.
NMNM113417

6. If Indian, Allottee or Tribe Name

7. If Unit or CA/Agreement, Name and/or No.

SUBMIT IN TRIPLICATE - Other instructions on reverse side.

1. Type of Well

☒ Oil Well ☐ Gas Well ☐ Other

8. Well Name and No.

ANTELOPE RIDGE 11 24 34 FED 3H

2. Name of Operator

CHEVRON MIDCONTINENT LP

Contact: BRITANY CORTEZ

E-Mail: bcortez@chevron.com

9. API Well No.

30-025-42318

3a. Address

15 SMITH ROAD
MIDLAND, TX 79705

3b. Phone No. (include area code)

Ph: 432-687-7416

10. Field and Pool, or Exploratory

RED HILLS; BONE SPRING N

4. Location of Well (Footage, Sec., T., R., M., or Survey Description)

Sec 11 T24S R34E Mer NMP 330FSL 980FWL

11. County or Parish, and State

LEA COUNTY, NM

12. CHECK APPROPRIATE BOX(ES) TO INDICATE NATURE OF NOTICE, REPORT, OR OTHER DATA

TYPE OF SUBMISSION

TYPE OF ACTION

☐ Notice of Intent☒ Subsequent Report☐ Final Abandonment Notice☐ Acidize☐ Alter Casing☐ Casing Repair☐ Change Plans☐ Convert to Injection☐ Deepen☐ Fracture Treat☐ New Construction☐ Plug and Abandon☐ Plug Back☐ Production (Start/Resume)☐ Reclamation☐ Recomplete☐ Temporarily Abandon☐ Water Disposal☐ Water Shut-Off☐ Well Integrity☒ Other
Production Start-up

13. Describe Proposed or Completed Operation (clearly state all pertinent details, including estimated starting date of any proposed work and approximate duration thereof. If the proposal is to deepen directionally or recompleat horizontally, give subsurface locations and measured and true vertical depths of all pertinent markers and zones. Attach the Bond under which the work will be performed or provide the Bond No. on file with BLM/BIA. Required subsequent reports shall be filed within 30 days following completion of the involved operations. If the operation results in a multiple completion or recompleat in a new interval, a Form 3160-4 shall be filed once testing has been completed. Final Abandonment Notices shall be filed only after all requirements, including reclamation, have been completed, and the operator has determined that the site is ready for final inspection.)

Please note summary report for work done from 3/15/15-4/7/15 is attached

3/21/15- MIRU

3/21/15- Perf 14111-14321;

3/22/15- Frac w/ Total Prop- 307,500lbs, Clean volume- 297,071 gal. Perf- 13829-14041; Frac w/ total prop-282,508lbs, Clean volume- 6,320gal; Perf- 13551-13761

3/23/15- Frac w/ Total Prop- 279,546 lbs Clean Volume- 274,554 gal; Perf 13271-13481; Frac w/ Total prop- 282,834 lbs, Clean Volume- 231,126 gal; Perf- 12991-13198

3/24/15- Frac w/ Total Prop- 280,259 lbs Clean Volume- 233,520 gal; Perf- 12711-12921; Frac w/ Total Prop- 278,858 lbs Clean Volume-223,188 gal; Perf- 12431-12641; Frac w/ Total Prop- 270,062 lbs Clean Volume-221,214 gal; Perf- 12151-12361; Frac w/ Total Prop- 285,768 lbs Clean Volume- 227,087 gal; Perf- 11871-12081; Frac w/ Total Prop- 283,450 lbs Clean Volume- 5390 gal

14. I hereby certify that the foregoing is true and correct.

Electronic Submission #302844 verified by the BLM Well Information System
For CHEVRON MIDCONTINENT LP, sent to the Hobbs
Committed to AFMSS for processing by LINDA JIMENEZ on 07/27/2015

Name (Printed/Typed) BRITANY CORTEZ

Title REGULATORY SPECIALIST

Signature (Electronic Submission)

Date 05/26/2015

THIS SPACE FOR FEDERAL OR STATE OFFICE USE

Approved By

Title

BUREAU OF LAND MANAGEMENT
CARLSBAD FIELD OFFICE

Conditions of approval, if any, are attached. Approval of this notice does not warrant or certify that the applicant holds legal or equitable title to those rights in the subject lease which would entitle the applicant to conduct operations thereon.

Office

Title 18 U.S.C. Section 1001 and Title 43 U.S.C. Section 1212, make it a crime for any person knowingly and willfully to make to any department or agency of the United States any false, fictitious or fraudulent statements or representations as to any matter within its jurisdiction.

**** OPERATOR-SUBMITTED ** OPERATOR-SUBMITTED ** OPERATOR-SUBMITTED ****

DEC 14 2015

Additional data for EC transaction #302844 that would not fit on the form

32. Additional remarks, continued

3/25/15- Perf- 11591-11801; Frac w/ total prop- 276,977lbs Clean Volume-5933 gal;
Perf-11311-11520; Frac w/ total prop- 300,268lbs Clean Volume- 227,556 gal

3/27/15- Flowing well on 12/64" choke flowing to open top tank

4/1/15- Set 2 7/8" tbg @ 10,485

4/7/15- Rig down. Release rig

5/17/15- 24hr test Oil-549, Gas- 689, Water-761 GOR 1255

****Please note that original operator was Chevron USA INC but is now Chevron Midcontinent LP.
Change of Operator was filed and approved by the NMOCD on 5/21/15.



Summary Report

Completion

Complete

Job Start Date: 3/15/2015

Job End Date: 4/7/2015

Well Name ANTELOPE RIDGE 11-24-34 FED 003H	Lease Antelope	Field Name Red Hills North	Business Unit Mid-Continent
Ground Elevation (ft)	Original RKB (ft)	Current RKB Elevation	Mud Line Elevation (ft) Water Depth (ft)

Report Start Date: 3/15/2015

Com

NO ACTIVITY AT WELL SITE

MIRU 3 GENCO TRAILERS & AUX EQUIP.
MI 2 BASIC ACID TKS & 2 BASIC FRAC TKS
DELIVER SUNBELT FORKLIFT

NO ACTIVITY AT WELL SITE

Report Start Date: 3/16/2015

Com

NO ACTIVITY AT WELL SITE

PJSM W/ BASIC, OTG, & EPS

PREP CELLAR (UPPER BALL VALVE (BLUE) INT. CSG, LOWER BALL VALVE (WHITE) SURF. CSG.)
MI 1 ADDITIONAL ACID TANK (3 TOTAL)
SUNBELT DELIVER 3 LIGHT TOWERS
MIRU SIGN-IN SHACK & GATES

TEST INT. CASING T/ 1000 PSI, TEST GOOD
TOOK ~24 BBL TO FILL

INSTALL ANCHORS, PLACE ACID TK CONTAINMENT, OFFLOAD ALL CONTAINMENT NEEDED FOR FLOWBACK & FRAC ON SIDE OF LOCATION

NO ACTIVITY AT WELL SITE

Report Start Date: 3/17/2015

Com

No Activity.

PJSA with Basic.

Set remaining fresh water tanks.

No Activity at well site.

Report Start Date: 3/18/2015

Com

No activity on well site.

Held PJSA with Fesco, Rig Runners, EPS, Vetco, TNT & Basic.

ND 7 1/16" 10K DHF.

Pull 5" BPV & set flow bushing with 2 way check and run in lock down pins.

NU 7 1/16" 10K manual master lower master valve.

Test LMV to 250psi low and 9,000psi high. Held for 10 min (good test).

ND 7 1/16" 10K night cap.

Pull flow bushing & two way check.

NU 7 1/6" 10K hydraulic middle valve, 7 1/16" flowcross with manual and hydraulic valve on each side & 7 1/16" 10K manual upper valve with night cap.

Lay containment & set OTT. RU Fesco flowback equipment & function test all hydraulic valves. MIRU Cudd pump trucks and equipment.

Shell test frac stack and flowback equipment to 250,psi low and 10,000psi high (good test).

Prime and test surface lines to 10,000 psi. Test pass.

Open well and pressure up on casing to 3,200 psi. Held pressure for 30 min. Increased pressure to 9,850psi held for an additional 23min (held 100psi on backside). Sleeve opened and pressure fell to 3,573psi. Established injection rate at 14.5 BPM 7,100 psi. Pumped 88 bbls into formation. ISIP 3,500 psi.

Well shut in 2,900psi.

RDMO Cudd pump trucks and equipment.

Repair acid tanks.

No Activity on well site.

Report Start Date: 3/19/2015

Com

No activity on well site.

Held pre job safety meeting with NOV & Halliburton.

RU water transfer lines to tanks and pre fill. MIRU T belt and sand kings.

Start offloading sand into kings.

Report Start Date: 3/20/2015

Com

No activity on site.

Held pre job safety meeting with OTG, Halliburton and Petro

Lay containment and RU acid mixing unit.

Mix 15% Acid.

ND 7 1/16" upper manual valve. NU 7 1/16" 6 port goat head and upper manual frac valve.

Lay frac containment RU Halliburton frac equipment, wireline & PWR BOP's & lubricator.



Summary Report

Completion

Complete

Job Start Date: 3/15/2015

Job End Date: 4/7/2015

Well Name ANTELOPE RIDGE 11-24-34 FED 003H	Lease Antelope	Field Name Red Hills North	Business Unit Mid-Continent
Ground Elevation (ft)	Original RKB (ft)	Current RKB Elevation	Mud Line Elevation (ft) Water Depth (ft)

Report Start Date: 3/21/2015

Com

Continue RU Halliburton frac equipment.

Held pre job safety meeting with Halliburton, OTG, TNT, Baker, Fesco, BK & NOV. Talked hazards of the job and RU safety.

Complete RU of Halliburton frac equipment.

Held pre job safety meeting with Halliburton, OTG, TNT, Baker, Fesco, BK, Three Rivers, Petro, PWR & NOV. Talked hazards of the job frac and perf operations.

Pressure test all frac iron to 9,998psi (good test). Pop off set at 8,960psi. Had to adjust nitrogen levels several times to set properly, Backside pop off set at 1,500psi.

SICP 3,000psi.

Spearhead 2500 gal of 15% Acid @ 14 BPM @ 8,500psi. Presssure fell to 6,000psi with acid on formation. Increased rate to 30 BPM at 5,560psi and pumped 60 bbls.

RU and test lubricator to 8,000psi.

"Perf Stage #1

Plug Setting Depth: N/A'

Perf Depths: 14,321', 14,251', 14,181', 14,111'

60° Phasing

Notes: 3300 psi - Open, 11 BPM, 165 ft/min, 1165 lbs Tension. All Shots Fired"

RD Lube and Guns

Attempt to Frac Stage 1

OW 3300 psi

Lost 2 pumps on Pad and shut down to repair.

Swap out Frac pumps and repair others in line.

Report Start Date: 3/22/2015

Com

Swap out Frac pumps and repair others in line.

Prime up and test lines to 9,990psi. Pop off set at 9,000psi.

"Frac Stage #1

Breakdown Pressure: 8,359 psi

Average Pump Rate: 77.6 bpm

Max Pump Rate: 83.5 bpm

Average Pump Pressure: 6,035 psi

Max Pump Pressure: 8,769 psi

ISIP: 3,188 psi

Clean Volume Pumped: 297,071 gals

Total Proppant Pumped: 307,500 lbs

Notes: Had trouble lining rate out in the beginning and had trouble with ramping sand the whole job. "

RU lubricator at use quick test sub and test to 8,000psi and equalize to well.

"Perf Stage #2

Plug Setting Depth: 14,073'

Perf Depths: 14,041', 13,971', 13,901', 13,829'

60° Phasing

Notes: Max rate 12 BPM @ 3,560psi. "

Prime and test lines. Had leak on pop off line and fixed. Presssure test lines to 9,915 psi & pop off set at 9,000psi.

Stage 2

Did not see ball seat pumped acid and displaced.

While pumping pad lost bleder at 648 bbls into pad due to sucking air.

Comenced pumping after pumping an additional 550 bbls in pad lost 3 pumps.

Unable to get enough rate, shut in well and replace pump.

Pumps lost:

6343 - Replace.

3233 - Computer issues (repaired)

4513 - Busted suction hose (repaired).

Repair and replace pumps.

Prime and Test Lines



Summary Report

Completion

Complete

Job Start Date: 3/15/2015

Job End Date: 4/7/2015

Well Name ANTELOPE RIDGE 11-24-34 FED 003H		Lease Antelope	Field Name Red Hills North	Business Unit Mid-Continent	
Ground Elevation (ft)	Original RKB (ft)	Current RKB Elevation		Mud Line Elevation (ft)	Water Depth (ft)

Com

Prime up and test lines to 9,990psi. Pop off set at 9,000psi.

"Frac Stage #2

Breakdown Pressure: 7,968 psi

Average Pump Rate: 80.01 bpm

Max Pump Rate: 80.59 bpm

Average Pump Pressure: 6,139 psi

Max Pump Pressure: 7,029 psi

ISIP: 3,843 psi

Clean Volume Pumped: 6,320 gals

Total Proppant Pumped: 282,508 lbs

Notes: Stage resumed after a short Pad to establish rate due to previous shutdown. Had Issue with blender losing the tub and hopper on swap to CRC Sand from 20/40 - minimal effect on stage. Discharge hose failed on pump and spilled Frac fluid."

RU lubricator at use quick test sub and test to 8,000psi and equalize to well.

NOTE: Continue cleanup from Frac Fluid spilled during hose failure.

"Perf Stage #2

Plug Setting Depth: 13,796'

Perf Depths: 13,761', 13,691', 13,615', 13,551'

60° Phasing

Notes: Shot #3 adjusted from procedure due to collar. 1165 lbs tens, 178 ft/min, 12 bpm on pumpdown. All shots fired. NOTE: Continue cleanup from Frac Fluid spilled during HAL hose failure."

Grease Wellhead Valves

NOTE: Continue cleanup from Frac Fluid spilled during HAL hose failure

Continue cleanup from Frac Fluid spilled during HAL hose failure

Report Start Date: 3/23/2015

Com

Continue cleanup from Frac Fluid spilled during HAL hose failure

"Frac Stage #3

Breakdown Pressure: 8,777 psi

Average Pump Rate: 74.47 bpm

Max Pump Rate: 80.58 bpm

Average Pump Pressure: 7,799 psi

Max Pump Pressure: 8,943 psi

ISIP: 3,693 psi

Clean Volume Pumped: 274,554 gals

Total Proppant Pumped: 279,546 lbs

Notes: Due to high pressure started gel early. "

g

Monitor casing and backside pressure.

RU lubricator at use quick test sub and test to 8,000psi and equalize to well.

"Perf Stage #4

Plug Setting Depth: 13,516'

Perf Depths: 13,481', 13,414', 13,341', 13,271'

60° Phasing

Notes: Max rate 12 BPM @ 4,500psi. Pumped 177.79 bbls. Changed gun #2 depth due to collar. "

Change out 2 Halliburton frac pumps.

Prime and Test lines. 250 psi low, 9900 psi high. Test successful.

"Frac Stage #4

Breakdown Pressure: 7,512 psi

Average Pump Rate: 72.43 bpm

Max Pump Rate: 80.82 bpm

Average Pump Pressure: 7,049 psi

Max Pump Pressure: 8,587 psi

ISIP: 3,959 psi

Clean Volume Pumped: 231,126 gals

Total Proppant Pumped: 282,834 lbs

Notes: Lost two pumps and had to slow rate to accommodate equipment."

RU lubricator at use quick test sub and test to 8,000psi and equalize to well.

"Perf Stage #5

Plug Setting Depth: 13,236'

Perf Depths: 12,991', 13,061', 13,131', 13,198'

60° Phasing

Notes: PD at 1628, 11 BPM, 3481 psi, 230 ft/min. Set plug and shot guns with 2 BPM. All shots fired."



Summary Report

Completion

Complete

Job Start Date: 3/15/2015

Job End Date: 4/7/2015

Well Name ANTELOPE RIDGE 11-24-34 FED 003H	Lease Antelope	Field Name Red Hills North	Business Unit Mid-Continent
Ground Elevation (ft)	Original RKB (ft)	Current RKB Elevation	Mud Line Elevation (ft) Water Depth (ft)

Com

Swap out Frac Pumps.

Report Start Date: 3/24/2015

Com

Swap out Frac Pumps.

Prime and Test Lines

"Frac Stage #5

Breakdown Pressure: 8,656 psi

Average Pump Rate: 79.37 bpm

Max Pump Rate: 81.05 bpm

Average Pump Pressure: 6,953 psi

Max Pump Pressure: 8,332 psi

ISIP: 3,936 psi

Clean Volume Pumped: 233,520 gals

Total Proppant Pumped: 280,259 lbs

Notes: Lost two pumps in pad. Shut down prior to going to sand to fix. Minimal effect on stage."

RU lubricator at use quick test sub and test to 8,000psi and equalize to well.

"Perf Stage #6

Plug Setting Depth: 12,956'

Perf Depths: 12,921', 12,851', 12,786', 12,711'

60° Phasing

Notes: PD at 1469 lbs Tens, 11.9 BPM, 3901 psi, 238 ft/min. Set plug and shot guns with 2 BPM. All shots fired."

Repair pump and shower trailer.

"Frac Stage #6

Breakdown Pressure: 8,344 psi

Average Pump Rate: 79.3 bpm

Max Pump Rate: 81 bpm

Average Pump Pressure: 7,142 psi

Max Pump Pressure: 8,363 psi

ISIP: 3,807 psi

Clean Volume Pumped: 223,188 gals

Total Proppant Pumped: 278,858 lbs"

RU lubricator at use quick test sub and test to 8,000psi and equalize to well.

"Perf Stage #7

Plug Setting Depth: 12,676'

Perf Depths: 12,641', 12,571', 12,501', 12,431'

60° Phasing

Notes: Max rate 12 BPM @ 3,900psi. "

"Frac Stage #7

Breakdown Pressure: 8,283 psi

Average Pump Rate: 79.67 bpm

Max Pump Rate: 80.9 bpm

Average Pump Pressure: 6,752 psi

Max Pump Pressure: 8,459 psi

ISIP: 3,944 psi

Clean Volume Pumped: 221,214 gals

Total Proppant Pumped: 270,062 lbs"

RU lubricator at use quick test sub and test to 8,000psi and equalize to well.

"Perf Stage #8

Plug Setting Depth: 12,396'

Perf Depths: 12,151', 12,221', 12,291', 12,361'

60° Phasing

Notes: Max rate 12 BPM @ 3,916psi. "

Grease frac stack.

"Frac Stage #8

Breakdown Pressure: 8,005 psi

Average Pump Rate: 79.6 bpm

Max Pump Rate: 81.01 bpm

Average Pump Pressure: 6,683 psi

Max Pump Pressure: 8,125 psi

ISIP: 3,968 psi

Clean Volume Pumped: 227,087 gals

Total Proppant Pumped: 285,768 lbs

Notes: Lost 1 Pump during stage - will be swapped out between stages. Minimal effect on stage. "

RU lubricator at use quick test sub and test to 8,000psi and equalize to well.



Summary Report

Completion

Complete

Job Start Date: 3/15/2015

Job End Date: 4/7/2015

Well Name ANTELOPE RIDGE 11-24-34 FED 003H		Lease Antelope	Field Name Red Hills North	Business Unit Mid-Continent	
Ground Elevation (ft)	Original RKB (ft)	Current RKB Elevation		Mud Line Elevation (ft)	Water Depth (ft)

Com

"Perf Stage #9

Plug Setting Depth: 12,116'

Perf Depths: 12,081', 12,011', 11,943', 11,871'

60° Phasing

Notes: PD at 230 ft/min, 11 BPM, 1538 lbs Tension. Tension on plug set went from 1407lbs to 1227 lbs. All shots fired."

"Frac Stage #9

Breakdown Pressure: 8,315 psi

Average Pump Rate: 79.01 bpm

Max Pump Rate: 80.33 bpm

Average Pump Pressure: 6,447 psi

Max Pump Pressure: 8,315 psi

ISIP: 4,044 psi

Clean Volume Pumped: 5,390 gals

Total Proppant Pumped: 283,450 lbs

Notes: Good Stage."

RU lubricator at use quick test sub and test to 8,000psi and equalize to well.

Report Start Date: 3/25/2015

Com

"Perf Stage #10

Plug Setting Depth: 11,836'

Perf Depths: 11,801', 11,733', 11,661', 11,591'N/A

60° Phasing

Notes: PD at 230 ft/min, 11 BPM, 1475 lbs Tension. Tension on plug set went from 1365 lbs to 1284 lbs. All shots fired."

Repair leak on 9 5/8" Casing standpipe valve.

Prime and test lines 250 psi low, 9,900 psi high. Test Successful.

"Frac Stage #10

Breakdown Pressure: 8,712 psi

Average Pump Rate: 79.32 bpm

Max Pump Rate: 80.6 bpm

Average Pump Pressure: 7,119 psi

Max Pump Pressure: 8,716 psi

ISIP: 4,145 psi

Clean Volume Pumped: 5,933 gals

Total Proppant Pumped: 276,977 lbs

Notes: Cut sand due to pressure increase. Increase was caused by sand ramp software malfunction causing spikes in sand concentration. Ran 1 wellbore volume of crosslink flush prior to resuming sand ramp. All sand placed."

RU lubricator at use quick test sub and test to 8,000psi and equalize to well.

"Perf Stage #11

Plug Setting Depth: 11,556'

Perf Depths: 11,311', 11,381', 11,451', 11,520'

60° Phasing

Notes: Max rate 12 BPM @ 4,050psi. Pumped 40 bbls"

"Frac Stage #11

Breakdown Pressure: 8,024 psi

Average Pump Rate: 80.2 bpm

Max Pump Rate: 81.06 bpm

Average Pump Pressure: 6,296 psi

Max Pump Pressure: 6,810 psi

ISIP: 4,012 psi

Clean Volume Pumped: 227,556 gals

Total Proppant Pumped: 300,268 lbs"

Held RD safety meeting with Halliburton and additional business partners on location.

RDMO wireline equipment and frac equipment. Clean and move containment.

MIRU CT unit and equipment.

High sustained winds. Shut down all activities due to crane safety considerations.

Report Start Date: 3/26/2015

Com

High sustained winds. Shut down all activities due to crane safety considerations.

Finish RU of CT unit and equipment.



Summary Report

Completion

Complete

Job Start Date: 3/15/2015

Job End Date: 4/7/2015

Well Name ANTELOPE RIDGE 11-24-34 FED 003H	Lease Antelope	Field Name Red Hills North	Business Unit Mid-Continent
Ground Elevation (ft)	Original RKB (ft)	Current RKB Elevation	Mud Line Elevation (ft) Water Depth (ft)

Com

MU CT BHA. Pull test coil connector to 25K surface test motor 2.8 BPM @ 3,500psi.

2.88 Coil connector - 1.23'
2.88 dual BPV - 1.94'
2.88 Hydraulic Disconnect - 2.02'
2.88 Dual Circ sub - 1.37'
2.88 Hydro pull - 5.25'
2.88 X-treme air motor - 10.65'
4.25" JZ bit - 1.00'
Total length 23.96'

RU riser to well and test pressure test equipment to 8,000psi (good test).

TIH pumping .5 BPM increased rate to 2.8 at 10,000' CTM.
RIH to 1st Plug

1st Plug Tagged @ 11,556'
Pump 2.79 bbls/min Flowback 3.3 bbls/min
WHP: 2,680 psi
CIRC: 5,594 psi
DO in 5 Mins
Send 10 bbl 110 visc Gel Sweep

RIH to 2nd Plug
2nd Plug Tagged @ 11,836'
Pump 2.78 bbls/min Flowback 3.3 bbls/min
WHP: 2,682 psi
CIRC: 5,663 psi
DO in 9 Mins
Send 10 bbl 100 visc Gel Sweep

RIH to 3rd Plug
3rd Plug Tagged @ 12,116'
Send 10 bbl 100 visc Gel Sweep

Begin ST to 10,550'

ST to 10,550'

Pump 2.8 bbls/min Flowback 3.2 bbls/min
WHP: 2550 psi
CIRC: 5780 psi
Send 10 bbl 100 visc Gel Sweep

All sweeps on surface on schedule.

TIH f/ 10,550'-12,116'



Summary Report

Completion

Complete

Job Start Date: 3/15/2015

Job End Date: 4/7/2015

Well Name ANTELOPE RIDGE 11-24-34 FED 003H		Lease Antelope	Field Name Red Hills North	Business Unit Mid-Continent	
Ground Elevation (ft)	Original RKB (ft)	Current RKB Elevation		Mud Line Elevation (ft)	Water Depth (ft)

Com

3rd Plug Tagged @ 12,116'
Pump 2.79 bbls/min Flowback 3.2 bbls/min
WHP: 2,590 psi
CIRC: 5,780 psi
DO in 12 Mins
Send 10 bbl 110 visc Gel Sweep

RIH
4th Plug Tagged @ 12,396'
Pump 2.77 bbls/min Flowback 3.2 bbls/min
WHP: 2,575 psi
CIRC: 5,690 psi
DO in 15 Mins
Send 10 bbl 100 visc Gel Sweep

RIH
5th Plug Tagged @ 12,674'
Pump 2.78 bbls/min Flowback 3.3 bbls/min
WHP: 2,602 psi
CIRC: 5,650 psi
DO in 30 Mins
Send 10 bbl 100 visc Gel Sweep

RIH
6th Plug Tagged @ 12,956'
Send 10 bbl 100 visc Gel Sweep

Begin ST to 10,500'

ST to 10,500'

Pump 2.8 bbls/min Flowback 3.3 bbls/min
WHP: 2650 psi
CIRC: 5720 psi
Send 10 bbl 100 visc Gel Sweep

All sweeps on surface on schedule.

TIH f/ 10,500'-12,956'

6th Plug Tagged @ 12,956'
Pump 2.77 bbls/min Flowback 3.3 bbls/min
WHP: 2,614 psi
CIRC: 5,700 psi
DO in 10 Mins
Send 10 bbl 110 visc Gel Sweep

RIH
7th Plug Tagged @ 13,236'
Pump 2.78 bbls/min Flowback 3.3 bbls/min
WHP: 2,663 psi
CIRC: 5,614 psi
DO in 11 Mins
Send 10 bbl 100 visc Gel Sweep

RIH
8th Plug Tagged @ 13,516'
Pump 2.78 bbls/min Flowback 3.3 bbls/min
WHP: 2,656 psi
CIRC: 5,590 psi
DO in 18 Mins
Send 10 bbl 100 visc Gel Sweep
Note: washed sand between 6 & 7 plugs and 7 & 8 plugs.

RIH
9th Plug Tagged @ 13,796'
Send 10 bbl 100 visc Gel Sweep



Summary Report

Completion

Complete

Job Start Date: 3/15/2015

Job End Date: 4/7/2015

Well Name ANTELOPE RIDGE 11-24-34 FED 003H	Lease Antelope	Field Name Red Hills North	Business Unit Mid-Continent
Ground Elevation (ft)	Original RKB (ft)	Current RKB Elevation	Mud Line Elevation (ft) Water Depth (ft)

Com

ST to 10,550'

Pump 2.8 bbls/min Flowback 3.2 bbls/min
WHP: 2360 psi
CIRC: 5400 psi
Send 10 bbl 100 visc Gel Sweep

All sweeps on surface on schedule.

TIH f/ 10,550'-1'3,796

9th Plug Tagged @ 13,796'

Pump 2.77 bbls/min Flowback 3.3 bbls/min
WHP: 2,651 psi
CIRC: 5,400 psi
DO in 6 Mins
Send 10 bbl 110 visc Gel Sweep

RIH

10th Plug not seen at depth.

NOTE: On stage #2 Frac the ball seal/pressure up/breakdown was not seen during Frac.

Possible plug failure.

Send 10 bbl 110 visc Gel Sweep

Continue to RIH

Pump 2.77 bbls/min Flowback 3.3 bbls/min
WHP: 2,625 psi
CIRC: 5,400 psi

Tagged obstruction (possibly the plug) at 14,290'

Unable to get a bite or apply any weight without Coil RIH further.

Continued to RIH to tag RSI.

Tagged RSI @ 14,346'

Pump 2.77 bbls/min Flowback 3.3 bbls/min
WHP: 2,615 psi
CIRC: 5,400 psi

Send 10 bbls 110 visc Gel Sweep, 20 bbls Spacer, 10 bbls 110 visc Gel Sweep

TOOH

TOH to Surface placing sweeps as needed.

Pump 2.77 bbls/min Flowback 3.3 bbls/min
WHP: 2,638 psi
CIRC: 5,400 psi

Continued into next reporting day.

Report Start Date: 3/27/2015

Com

TOH to Surface placing sweeps as needed.

Pump 2.77 bbls/min Flowback 3.3 bbls/min
WHP: 2,629 psi
CIRC: 5,400 psi

Bump Up, Shut In, Bleed Off.

Lay Down BHA.

Blow Down Coil with N2.

RDMO Coil and Related Vendors.



Summary Report

Completion

Complete

Job Start Date: 3/15/2015

Job End Date: 4/7/2015

Well Name ANTELOPE RIDGE 11-24-34 FED 003H		Lease Antelope	Field Name Red Hills North	Business Unit Mid-Continent	
Ground Elevation (ft)	Original RKB (ft)	Current RKB Elevation		Mud Line Elevation (ft)	Water Depth (ft)

Com

FCP: 2624 SIICP: 0, SISCP: 0

Flowing well @ 07:00 3-27-15 - 18:00 hrs 3-27-15-15 on a 12/64 choke flowing to open top tank. Changed to 14/64 choke at 13:00 (6 Hour Schedule)

Initial LTR 67,630 bbls
Beginning psi 2624
Ending psi 2276
Last BOWPH 60 bbls
Last BOOPH 0 bbls
Gas rate mcf N/A
Water density 8.5
Oil Density N/A
Chlorides 32,000 ppm

Total Water Recovered 712 bbls
Total Oil Recovered 0 bbls

TLR 712 bbls
TLLR 66,918 bbls

Continue to flow and monitor with 24 hour Supervision.
Reports will be updated 6 a.m./6 p.m.

Report Start Date: 3/28/2015

Com

FCP: 2040 SIICP: 0, SISCP: 0

Flowing well @ 18:00 3-27-15 - 06:00 hrs 3-28-15-15 on a 16/64 choke flowing to open top tank. Changed to 18/64 choke at 01:00 (6 Hour Schedule)

Initial LTR 67,630 bbls
Beginning psi 2260
Ending psi 2040
Last BOWPH 113 bbls
Last BOOPH 0 bbls
Gas rate mcf N/A
Water density 8.5
Oil Density N/A
Chlorides 32,000 ppm

Total Water Recovered 1954 bbls
Total Oil Recovered 0 bbls

TLR 1954.8 bbls
TLLR 65,675.2 bbls

FCP: 1648 SIICP: 0, SISCP: 0

Flowing well @ 07:00 3-28-15 - 18:00 hrs 3-28-15-15 on a 20/64 choke flowing to open top tank. Changed to 22/64 choke at 13:00 (6 Hour Schedule)

Initial LTR 67,630 bbls
Beginning psi 1995
Ending psi 1648
Last BOWPH 134 bbls
Last BOOPH 0 bbls
Gas rate mcf N/A
Water density 8.6
Oil Density N/A
Chlorides 40,000 ppm

Total Water Recovered 3459.8 bbls
Total Oil Recovered 0 bbls

TLR 3459.8 bbls
TLLR 64,170.2 bbls

NOTE:Choke changed back to 20/64 at time of report 1821 psi.

Continue to flow and monitor with 24 hour Supervision.
Reports will be updated 6 a.m./6 p.m.



Summary Report

Completion

Complete

Job Start Date: 3/15/2015

Job End Date: 4/7/2015

Well Name ANTELOPE RIDGE 11-24-34 FED 003H	Lease Antelope	Field Name Red Hills North	Business Unit Mid-Continent
Ground Elevation (ft)	Original RKB (ft)	Current RKB Elevation	Mud Line Elevation (ft) Water Depth (ft)

Report Start Date: 3/29/2015

Com

FCP: 1650 SIICP: 0, SISCP: 0

Flowing well @ 18:00 3-28-15 - 06:00 hrs 3-29-15-15 on a 20/64 choke flowing to open top tank. Changed to 18/64 choke at 20:00

Initial LTR 67,630 bbls
Beginning psi 1672
Ending psi 1650
Last BOWPH 115 bbls
Last BOOPH 0 bbls
Gas rate mcf N/A
Water density 8.6
Oil Density N/A
Chlorides 40,000 ppm

Total Water Recovered 4809.8 bbls
Total Oil Recovered 0 bbls

TLR 4809.8 bbls
TLLR 62,820.2 bbls

FCP: 1698 SIICP: 0, SISCP: 0

Flowing well @ 06:00 3-29-15 - 07:00 hrs 3-29-15-15 on a 18/64 choke flowing to open top tank.

Initial LTR 67,630 bbls
Beginning psi 1650
Ending psi 1698
Last BOWPH 115 bbls
Last BOOPH 0 bbls
Gas rate mcf N/A
Water density 8.6
Oil Density N/A
Chlorides 40,000 ppm

Total Water Recovered 4924.8 bbls
Total Oil Recovered 0 bbls

TLR 4924.8 bbls
TLLR 62,705.2 bbls

Shut Well In at 07:00

MIRU E-Line, Pump, Containment, and Restraints.
NU E-Line Flange

Prime and Test Lines 250 psi Low, 7,000 psi High. Test Successful.
Equalize and open well to Flush 317 bbls @ 7 BPM 2800 PSI
Shut In, Bleed Off

PU 5K Lubricator, BOP, GR/JB Assembly (Cable Head, Fishing Neck, CCL, Weight Bar, JB, GR) Total Length 30.25' Max OD 4.625"
Test to 250 psi Low, 4000 psi High. Test Successful.

Equalize to WHP 2700 psi
CCL Correlated at MJ @ 10,491'
RIH to KOP @ 10,511'
POOH

No obstructions or debris encountered.

PU 5K Lubricator and Baker Packer Assembly (Cable Head, Fishing Neck, CCL, Firing Head, Baker 20 Setting Tool, Packer Sleeve, Packer Assembly, Tail Pipe) Total Length 39.31' Max OD 4.58"
NOTE: 3 Pins installed on disc 338 psi ea. = 1014 psi
Test to 250 psi Low, 4000 psi High. Test Successful.

Equalize to WHP of 2700 psi
CCL Correlated at MJ @ 10,491'
RIH to 10,460' (51' above KOP) Set Packer (3 Pins installed on disc 338 psi ea. = 1014 psi)
Bleed off pressure.
POOH.

RDMO E-Line and Related Vendors
Monitor well for flow.



Summary Report

Completion
Complete
Job Start Date: 3/15/2015
Job End Date: 4/7/2015

Well Name ANTELOPE RIDGE 11-24-34 FED 003H	Lease Antelope	Field Name Red Hills North	Business Unit Mid-Continent
Ground Elevation (ft)	Original RKB (ft)	Current RKB Elevation	Mud Line Elevation (ft) Water Depth (ft)

Com
Monitor well overnight for flow.
Report Start Date: 3/30/2015
Com
Monitor well overnight for flow.
RDMO Flowback Surface equipment ND Crown Valve, Flow Cross, and Hydraulic Valve.
NU Lube, 5.5" BPV, 2-7/8" Flow Bushing, and Rods
Set 5.5" BPV, 2-7/8" Flow Bushing
LD Lube and Rods
NU 7 1/16" 10k Blind Flange
RDMO All Equipment
No Planned Activity
Report Start Date: 3/31/2015
Com
ROAD RIG TO LOCATION
TGSM, JSA, PRE-RU CHECK LIST
CREW LUNCH
MIRU. SET IN WO PACKAGE. SET IN RACKS AND LOAD W/ 345 JTS 2 7/8" L80 PROD TBG. STRAPPED TOP ROW.
CREW TRAVEL
NO OPS. ON LOCATION
Report Start Date: 4/1/2015
Com
NO OPERATIONS ON LOCATION.
CREW TRAVEL TO LOCATION.
TGSM, JSA REVIEW W/ CREW, BAKER, GE & TBG TESTERS
CHECK CSG, NO PRESSURE. ND 7 1/16" 10K TAPPED FLANGE. NU 10K X 5K SPOOL AND 7 1/16" 5K BOP. GE WELLHEAD TECH REMOVED BPV, INSTALL 2 WAY CHECK.. TEST BOP 250/3000 PSI. GOOD TEST. REMOVE HANGER & CHECK.
TBG TESTERS MIRU. CHECK ELEVATORS W/ 2 7/8" TBG SUB, OK. RIH W/ ON/OFF TOOL ON 323 JTS 2 7/8" L80 TBG TESTING TO 6K. TAG PKR @ 10,460' W/ 30' IN ON JT 323. MARK TAG ON JT 323. CONTINUE IN TO PUT PKR IN 16 +/- PTS COMPRESSION, MARK SETTING. POOH LAYING DN 2 JTS. PU 1 -10' AND 1 - 8' (18') 2 7/8" L80 SUBSAND JT 322. ON/OFF TOOL SWINGING 4' ABOVE PKR. SI WELL SDON.
CREW TRAVEL HOME
NO OPERATIONS ON LOCATION.
Report Start Date: 4/2/2015
Com
NO OPERATIONS ON LOCATION
CREW TRAVEL TO LOCATION
TGSM, JSA REVIEW.
NO PRESSURE ON WELL. CIRCULATE 300 BBLs PKR FLUID AROUND @ 1.25 BPM. HAD GOOD CLEAN FLUID AT SURFACE. CIRCULATED CONVENTIONAL.
REMOVE TIW AND 2 7/8" COLLAR INSTALL TBG HANGER W/ 2 WAY CHECK AND 8' X 2 7/8" L80 WORK SUB. SET HANGER IN WH. TBG IN 15 PTS COMPRESSION. NU TREE AND TEST TO 5K. GOOD TEST REMOVE 2 WAY CHECK. FROM HANGER. PRESSURE UP ON TBG TO 3200 PSI. TO POP THE PUMP OUT PLUG. PRESSURE FELL TO 2700 PSI. CROSS WIND GUSTING 30 MPH AND OVER. CAN NOT RIG DOWN. SI WELL SDON.
CREW TRAVEL TO LOCATION
NO OPERATIONS ON LOCATION
Report Start Date: 4/3/2015
Com
NO OPERATIONS ON LOCATION.
CREW TRAVEL
TGSM, JSA REVIEW
BRAKE DOWN RU LINES, PREP FOR PU RD. MOVE RU, RACKS, MANIFOLD ETC TO NEXT WELL. COULD NOT RD PU DUE TO HIGH WINDS.
NO OPERATIONS ON LOCATION.
Report Start Date: 4/4/2015
Com
CREW DAY OFF
Report Start Date: 4/5/2015
Com
CREW DAY OFF
Report Start Date: 4/6/2015



Summary Report

Completion

Complete

Job Start Date: 3/15/2015

Job End Date: 4/7/2015

Well Name ANTELOPE RIDGE 11-24-34 FED 003H		Lease Antelope	Field Name Red Hills North	Business Unit Mid-Continent	
Ground Elevation (ft)	Original RKB (ft)	Current RKB Elevation		Mud Line Elevation (ft)	Water Depth (ft)

Com

NO OPERATIONS ON LOCATION.

Report Start Date: 4/7/2015

Com

NO OPERATIONS ON LOCATION

CREW TRAVEL

TGSM, JSA REVIEW, PRE RD CHECK LIST.

RD PU, ROAD TO WHILLIAMS GAS COM #1 **** FINAL REPORT FOR PULLING UNIT****

Report Start Date: 4/8/2015

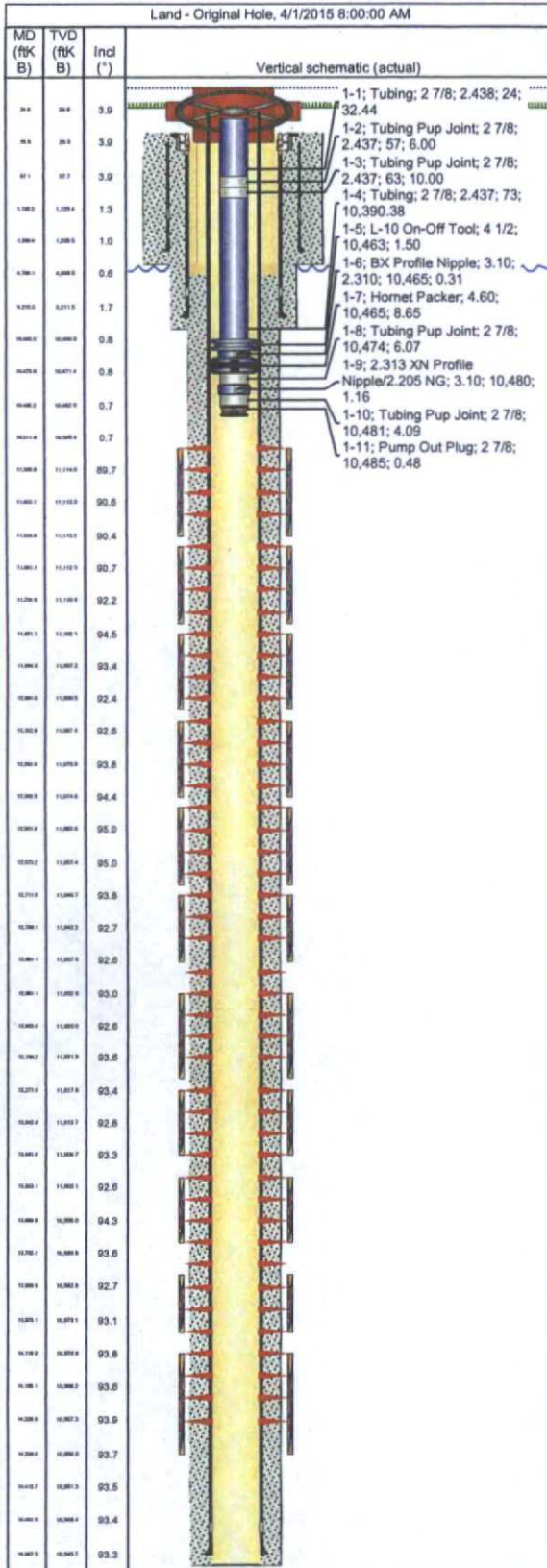
Com

No. Activity Carry Cost.



Tubing Summary

Well Name ANTELOPE RIDGE 11-24-34 FED 003H	Lease Antelope	Field Name Red Hills North	Business Unit Mid-Continent
Ground Elevation (ft) 3,507.00	Original RKB Elevation (ft) 3,531.50	Current RKB Elevation 3,531.50, 2/5/2015	Mud Line Elevation (ft) Water Depth (ft)
Current KB to Ground (ft) 24.50	Current KB to Mud Line (ft)	Current KB to Csg Flange (ft)	Current KB to Tubing Head (ft)



Tubing Strings									
Tubing Description Tubing - Production		Planned Run? N		Set Depth (MD) (ftKB) 10,485.6		Set Depth (TVD) (ftKB) 10,483.2			
Run Date 4/1/2015		Run Job Complete, 3/15/2015 00:00		Pull Date		Pull Job			
Jts	Item Des	OD (in)	ID (in)	Wt (lb/ft)	Grade	Top Thread	Len (ft)	Top (ftKB)	Btm (ftKB)
1	Tubing	2 7/8	2.437	6.50	L-80		32.44	24.5	56.9
1	Tubing Pup Joint	2 7/8	2.437	6.50	L-80		6.00	56.9	62.9
1	Tubing Pup Joint	2 7/8	2.437	6.50	L-80		10.00	62.9	72.9
322	Tubing	2 7/8	2.437	6.50	L-80		10,390.38	72.9	10,463.3
	L-10 On-Off Tool	4 1/2					1.50	10,463.3	10,464.8
	BX Profile Nipple	3.1	2.310				0.31	10,464.8	10,465.1
	Hornet Packer	4.6					8.65	10,465.1	10,473.8
1	Tubing Pup Joint	2 7/8					6.07	10,473.8	10,479.9
	2.313 XN Profile Nipple/2.205 NG	3.1					1.16	10,479.9	10,481.0
1	Tubing Pup Joint	2 7/8					4.09	10,481.0	10,485.1
	Pump Out Plug	2 7/8					0.48	10,485.1	10,485.6

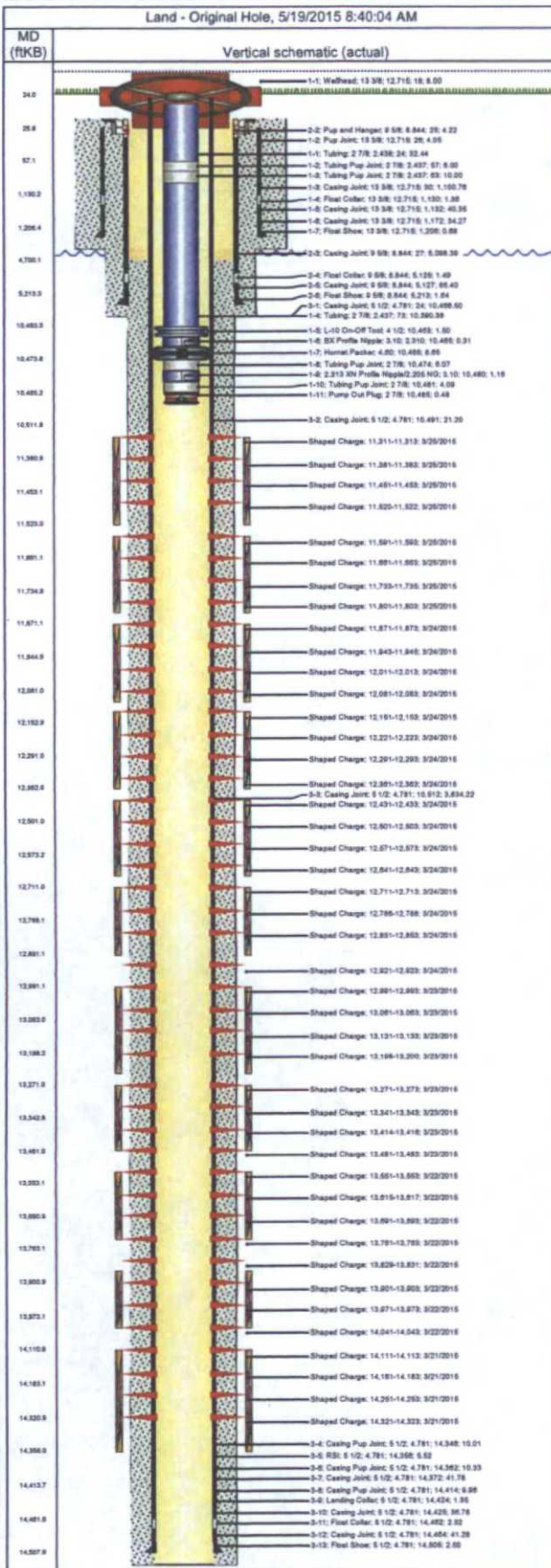
Rod Strings			
Rod Description	Planned Run?	Set Depth (ftKB)	Set Depth (TVD) (ftKB)
Run Date	Run Job	Pull Date	Pull Job

Rod Components							
Jts	Item Des	OD (in)	Grade	Model	Len (ft)	Top (ftKB)	Btm (ftKB)



Wellbore Schematic

Well Name ANTELOPE RIDGE 11-24-34 FED 003H	Lease Antelope	Field Name Red Hills North	Business Unit Mid-Continent
---	-------------------	-------------------------------	--------------------------------



Job Details						
Job Category			Start Date		Rig/Unit End Date	
Completion			3/15/2015		4/7/2015	
Casing Strings						
Csg Des	OD (in)	Wt/Len (lb/ft)	Grade	Top Thread	Set Depth (MD) (ftKB)	
Surface	13 3/8	48.00	H-40	ST&C	1,207	
Intermediate Casing 1	9 5/8	40.00	HCK-55	LT&C	5,215	
Production Casing	5 1/2	20.00	P-110		14,508	
Tubing Strings						
Tubing - Production set at 10,485.6ftKB on 4/1/2015 08:00						
Tubing Description			Run Date		String Length (ft)	Set Depth (MD) (ftKB)
Tubing - Production			4/1/2015		10,461.08	10,485.6
Item Des	Jts	OD (in)	Wt (lb/ft)	Grade	Len (ft)	Btm (ftKB)
Tubing	1	2 7/8	6.50	L-80	32.44	56.9
Tubing Pup Joint	1	2 7/8	6.50	L-80	6.00	62.9
Tubing Pup Joint	1	2 7/8	6.50	L-80	10.00	72.9
Tubing	322	2 7/8	6.50	L-80	10,390.38	10,463.3
L-10 On-Off Tool		4 1/2			1.50	10,464.8
BX Profile Nipple		3.1			0.31	10,465.1
Hornet Packer		4.6			8.65	10,473.8
Tubing Pup Joint	1	2 7/8			6.07	10,479.9
2.313 XN Profile Nipple/2.205 NG		3.1			1.16	10,481.0
Tubing Pup Joint	1	2 7/8			4.09	10,485.1
Pump Out Plug		2 7/8			0.48	10,485.6
Perforations						
Date	Top (ftKB)	Btm (ftKB)	Shot Dens (shots/ft)	Entered Shot Total	Zone & Completion	
3/25/2015	11,311.0	11,313.0	6.0	12	Bone Springs 2, Original Hole	
3/25/2015	11,381.0	11,383.0	6.0	12	Bone Springs 2, Original Hole	
3/25/2015	11,451.0	11,453.0	6.0	12	Bone Springs 2, Original Hole	
3/25/2015	11,520.0	11,522.0	6.0	12	Bone Springs 2, Original Hole	
3/25/2015	11,591.0	11,593.0	6.0	12	Bone Springs 2, Original Hole	
3/25/2015	11,661.0	11,663.0	6.0	12	Bone Springs 2, Original Hole	
3/25/2015	11,733.0	11,735.0	6.0	12	Bone Springs 2, Original Hole	
3/25/2015	11,801.0	11,803.0	6.0	12	Bone Springs 2, Original Hole	
3/24/2015	11,871.0	11,873.0	6.0	12	Bone Springs 2, Original Hole	
3/24/2015	11,943.0	11,945.0	6.0	12	Bone Springs 2, Original Hole	
3/24/2015	12,011.0	12,013.0	6.0	12	Bone Springs 2, Original Hole	
3/24/2015	12,081.0	12,083.0	6.0	12	Bone Springs 2, Original Hole	
3/24/2015	12,151.0	12,153.0	6.0	12	Bone Springs 2, Original Hole	
3/24/2015	12,221.0	12,223.0	6.0	12	Bone Springs 2, Original Hole	
3/24/2015	12,291.0	12,293.0	6.0	12	Bone Springs 2, Original Hole	
3/24/2015	12,361.0	12,363.0	6.0	12	Bone Springs 2, Original Hole	

