

Submit 1 Copy To Appropriate District Office

District I

1625 N. French Dr., Hobbs, NM 88240

District II

1301 W. Grand Ave., Artesia, NM 88210

District III

1000 Rio Brazos Rd., Aztec, NM 87410

District IV

1220 S. St. Francis Dr., Santa Fe, NM 87505

State of New Mexico
Energy, Minerals and Natural Resources

Form C-103
October 13, 2009

HOBBS

AUG 12 2015

RECEIVED

CONSERVATION DIVISION
1220 South St. Francis Dr.
Santa Fe, NM 87505

WELL API NO. 30-025-40420
5. Indicate Type of Lease STATE <input type="checkbox"/> FEE <input type="checkbox"/>
6. State Oil & Gas Lease No.
7. Lease Name or Unit Agreement Name Maljamar AGI
8. Well Number #1
9. OGRID Number
10. Pool name or Wildcat AGI: Lower Leonard/Wolfcamp
11. Elevation (Show whether DR, RKB, RT, GR, etc.)

SUNDRY NOTICES AND REPORTS ON WELLS
(DO NOT USE THIS FORM FOR PROPOSALS TO DRILL OR TO DEEPEN OR PLUG BACK TO A DIFFERENT RESERVOIR. USE "APPLICATION FOR PERMIT" (FORM C-101) FOR SUCH PROPOSALS.)

1. Type of Well: Oil Well ☐ Gas Well ☐ Other Acid Gas Injection ☒

2. Name of Operator
AKA Energy Group LLC

3. Address of Operator
65 Mercado Street, Suite 250, Durango, CO 81301

4. Well Location

Unit Letter O: 130 feet from the South line and 1813 feet from the East line

Section 21 Township 17 S Range 32 E NMPM County Lea

11. Elevation (Show whether DR, RKB, RT, GR, etc.)

12. Check Appropriate Box to Indicate Nature of Notice, Report or Other Data

NOTICE OF INTENTION TO:

PERFORM REMEDIAL WORK ☐ PLUG AND ABANDON ☐
TEMPORARILY ABANDON ☐ CHANGE PLANS ☐
PULL OR ALTER CASING ☐ MULTIPLE COMPL ☐
DOWNHOLE COMMINGLE ☐

SUBSEQUENT REPORT OF:

REMEDIAL WORK ☐ ALTERING CASING ☐
COMMENCE DRILLING OPNS. ☐ P AND A ☐
CASING/CEMENT JOB ☐

OTHER

OTHER: ☒ Annual MIT and Braden head test

13. Describe proposed or completed operations. (Clearly state all pertinent details, and give pertinent dates, including estimated date of starting any proposed work). SEE RULE 19.15.7.14 NMAC. For Multiple Completions: Attach wellbore diagram of proposed completion or recompletion.

The MIT and Braden head Test were conducted on Wednesday, August 12, 2015 at 10 am. In order to conduct the MIT, the annular space pressure was adjusted to 600 psig by adding a small amount of diesel immediately before the test.

- Initially the starting injection pressure and the annular space pressure between casing and tubing was 400 psig
- Placed chart on annular space and began recording annular space pressure.
- Bled off annular fluid (diesel) to bring observed annular space pressure to zero psig.
- Slowly raised annular pressure by introducing diesel to the annulus to bring pressure to 600 psig.
- When annulus pressure reached 600 psig closed valves to pumping truck and recorded annular space pressure for 40 minutes.
- Recorded tubing injection pressure and temperature during charting: pressure was 2241 psig at start and 2260 psig at end; temperature was 97° F at start and 99° F at end.
- After 40 minutes bled off annular fluid to reduce observed pressure to zero psig.
- Stopped recording TEST COMPLETE.
- Restored annular pressure to normal psig (approximately 300 psig).

The Braden head Test was conducted concurrent with the MIT.

- Closed valve to Braden head casing the day before the test.
- At the start of the test opened the Braden head casing valve and recorded zero psig.
- Stop recording after 30 minutes.
- Pressure remained at zero psig throughout the test.

Geolex, Inc. and Pate Trucking conducted the test. After meeting at the AKA Frontier Maljamar AGI #1 facility near Maljamar, NM we held a safety meeting and obtained the required work permits.

I hereby certify that the information above is true and complete to the best of my knowledge and belief.

DEC 15 2015

BS
12/16/15

SIGNATURE

Michael W. Selke

TITLE: Consultant to AKA Energy Group LLC

DATE: 8/12/2015

Type or print name

Michael W. Selke, RG

E-mail address: mselke@geolex.com

PHONE: 505-842-8000

For State Use Only

APPROVED BY:

Mary G. Brown

TITLE

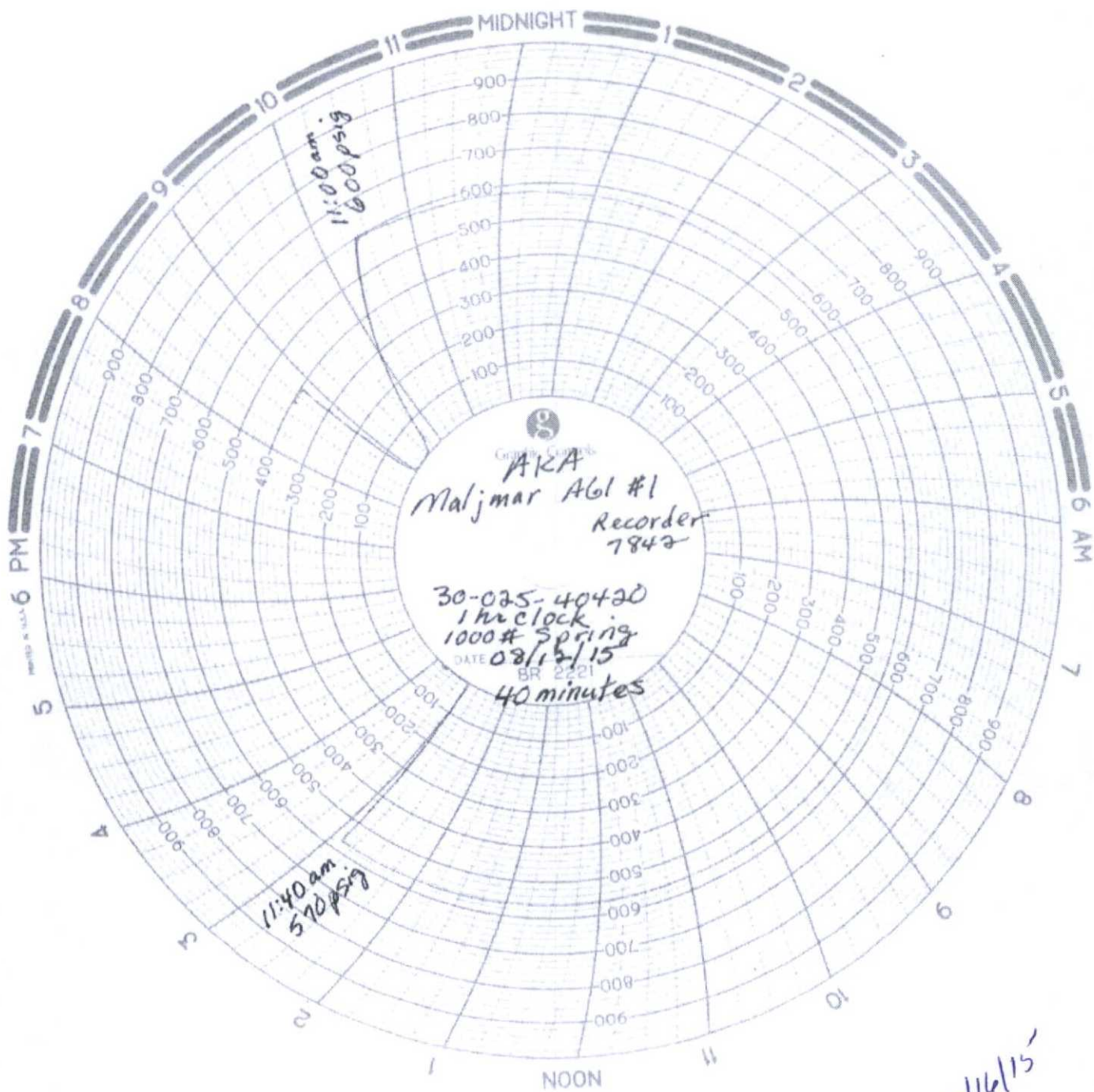
Dist. Supervisor

DATE

8/12/2015

Conditions of Approval (if any):

BS 12/16/15



BB 12/16/15