

DISTRICT I  
1625 N. French Dr., Hobbs, NM 88240  
Phone: (575) 393-6161 Fax: (575) 393-0720

DISTRICT II  
811 S. First St., Artesia, NM 88210  
Phone: (575) 748-1283 Fax: (575) 748-9720

DISTRICT III  
1000 Rio Braxos Rd., Artec, NM 87410  
Phone: (505) 334-6178 Fax: (505) 334-6170

DISTRICT IV  
1220 S. St. Francis Dr., Santa Fe, NM 87505  
Phone: (505) 476-3480 Fax: (505) 476-3482

State of New Mexico  
Energy, Minerals & Natural Resources Department

OIL CONSERVATION DIVISION  
1220 South St. Frances Dr.  
Santa Fe, NM 87505

Form C-102  
Revised August 1, 2011  
Submit one copy to appropriate  
District Office

HOBBS OGD

DEC 21 2015

RECEIVED

☐ AMENDED REPORT

WELL LOCATION AND ACREAGE DEDICATION PLAT

API Number 30-029-42986	Pool Code 37570	Pool Name Lea; Bone Springs
Property Code 302802	Property Name LEA UNIT	Well Number 39H
OGRID No. 240974	Operator Name LEGACY RESERVES OPERATING LP	Elevation 3677'

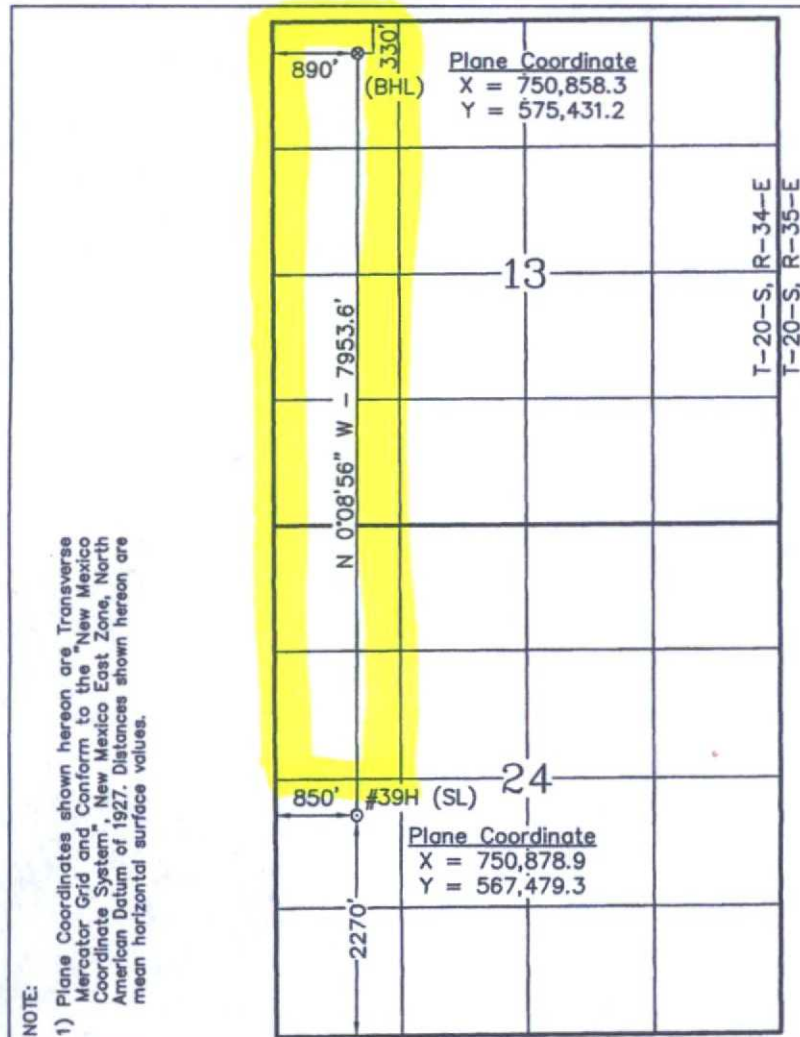
Surface Location

UL or lot No.	Section	Township	Range	Lot Idn	Feet from the	North/South line	Feet from the	East/West line	County
L	24	20 S	34 E		2270	SOUTH	850	WEST	LEA

Bottom Hole Location If Different From Surface

UL or lot No.	Section	Township	Range	Lot Idn	Feet from the	North/South line	Feet from the	East/West line	County
D	13	20 S	34 E		330	NORTH	890	WEST	LEA
Dedicated Acres 240	Joint or Infill	Consolidation Code	Order No.						

NO ALLOWABLE WILL BE ASSIGNED TO THIS COMPLETION UNTIL ALL INTERESTS HAVE BEEN CONSOLIDATED OR A NON-STANDARD UNIT HAS BEEN APPROVED BY THE DIVISION



OPERATOR CERTIFICATION

I hereby certify that the information contained herein is true and complete to the best of my knowledge and belief, and that this organization either owns a working interest or unleased mineral interest in the land including the proposed bottom hole location or has a right to drill this well at this location pursuant to a contract with an owner of such a mineral or working interest, or to a voluntary pooling agreement or a compulsory pooling order heretofore entered by the division.

Signature: *Barry W. Hunt* Date: 9/7/15  
Printed Name: Barry W. Hunt

E-mail Address

SURVEYOR CERTIFICATION

I hereby certify that the well location shown on this plat was plotted from field notes of actual surveys made by me or under my supervision, and that the same is true and correct to the best of my belief.

June 25, 2015

Date of Survey

Signature & Seal of Professional Surveyor

W.O. Num. 2015-0416-U

Certificate No. Macon McDonald 12185

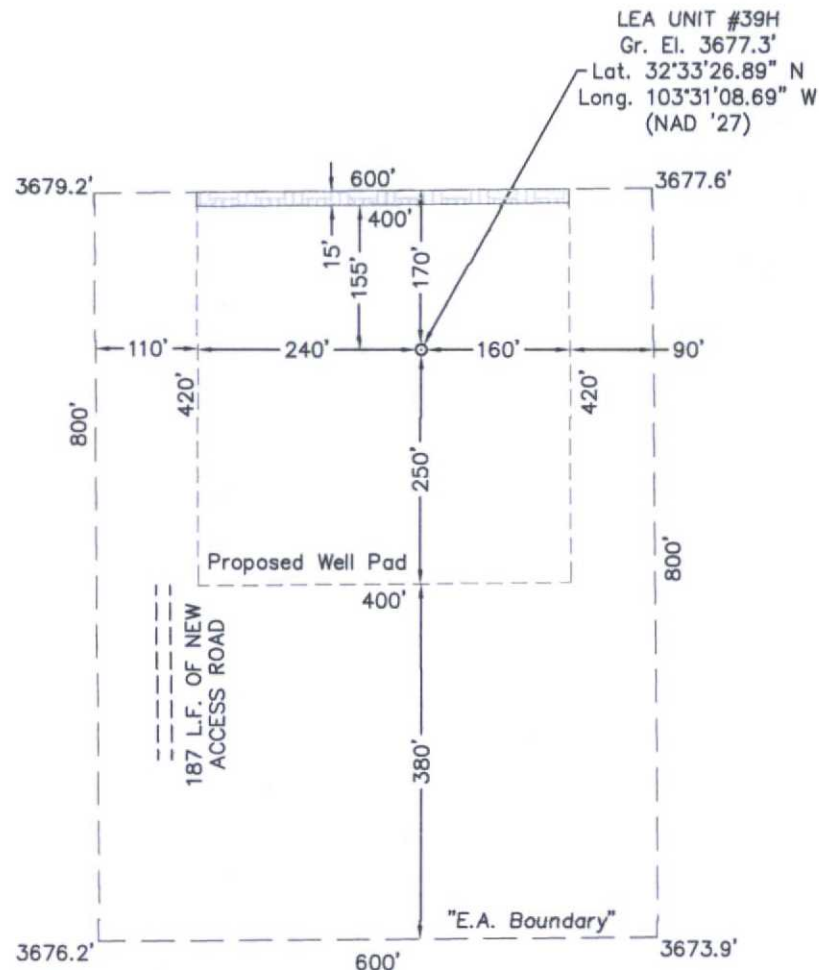
Scale  
1" = 2000'

DEC 21 2015

**SECTION 24, TOWNSHIP 20 SOUTH, RANGE 34 EAST, N.M.P.M.  
LEA COUNTY**

**NEW MEXICO**

L-2015-0416-U2



- Denotes 15' Topsoil Stockpile



DRIVING DIRECTIONS

FROM THE INTERSECTION OF STATE HIGHWAY 18 AND U.S. HIGHWAY 62-180 IN HOBBS, NEW MEXICO, GO WEST AND SOUTHWEST ON U.S. HIGHWAY 62-180 23.6 MILES TO MARATHON ROAD / CO. RD. 27-A ON SOUTH (LEFT) SIDE OF THE HIGHWAY. THEN GO SOUTH 5.6 MILES TO A LEASE ROAD ON THE EAST (LEFT) SIDE OF THE ROAD, THEN GO EAST ON LEASE ROAD 700 FEET TO A POINT APPROXIMATELY 500 FEET SOUTH OF THE PROPOSED LOCATION.

LEGACY RESERVES OPERATING LP

LEA UNIT #39H

Located 2270' FSL & 850' FWL, Section 24  
Township 20 South, Range 34 East, N.M.P.M.  
Lea County, New Mexico

Drawn By: SC/LRG

Date: July 8, 2015

Scale: 1" = 200'

Field Book: 587 / 53-55

Revision Date: 9-11-15

Quadrangle: Lea

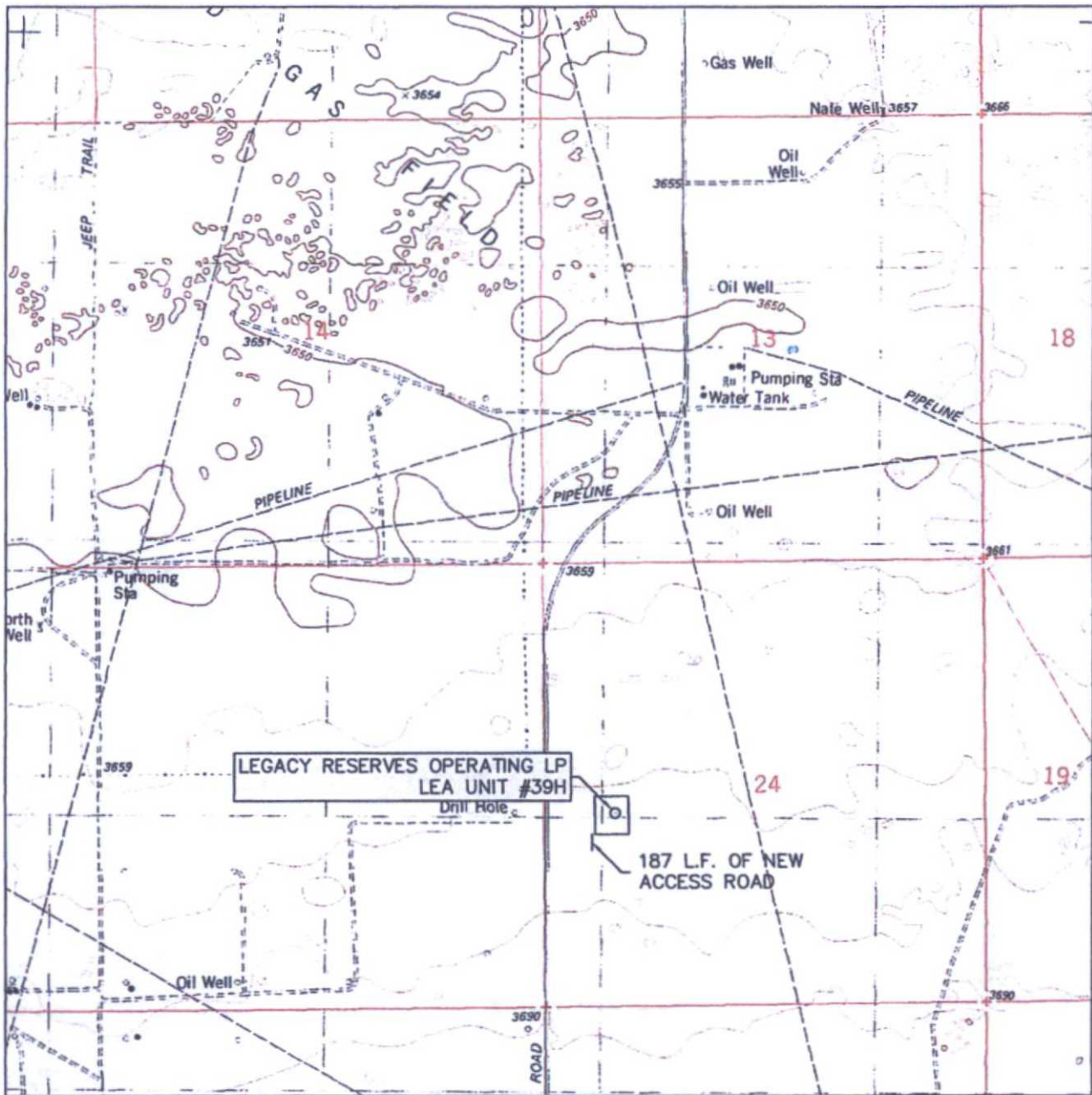
W.O. No: 2015-0416

Dwg. No.: L-2015-0416-U2



SURVEYORS - ENGINEERS - PLANNERS  
110 W. LOUISIANA AVE., SUITE 110  
MIDLAND, TEXAS 79701  
(432) 687-0865 - FAX (432) 687-0868

# LOCATION VERIFICATION MAP



SCALE: 1" = 2000'

CONTOUR INTERVAL:  
LEA - 10'

SEC. 24 TWP. 20-S RGE. 34-E

SURVEY N.M.P.M.

COUNTY LEA

DESCRIPTION 2270' FSL & 850' FWL

ELEVATION 3677'

OPERATOR LEGACY RESERVES OPERATING LP

LEASE LEA UNIT

U.S.G.S. TOPOGRAPHIC MAP  
LEA



**WEST  
COMPANY**  
of Midland, LLC

FIRM REGISTRATION NUMBER: 100682-00  
110 W. LOUISIANA, STE. 110  
MIDLAND TEXAS, 79701  
(432) 687-0865 - (432) 687-0868 FAX

Exhibit A & B

## Access

+  
One mile

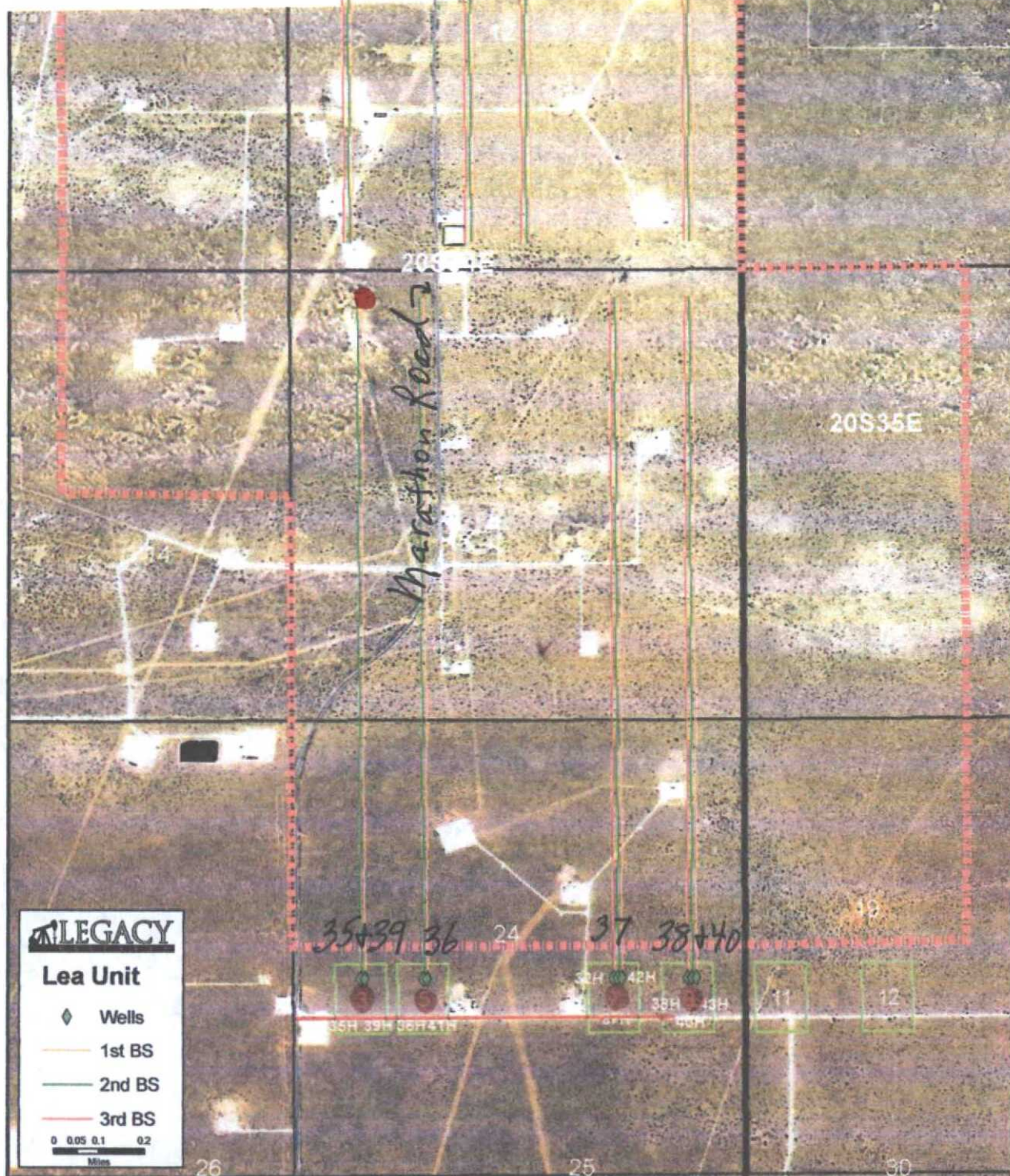
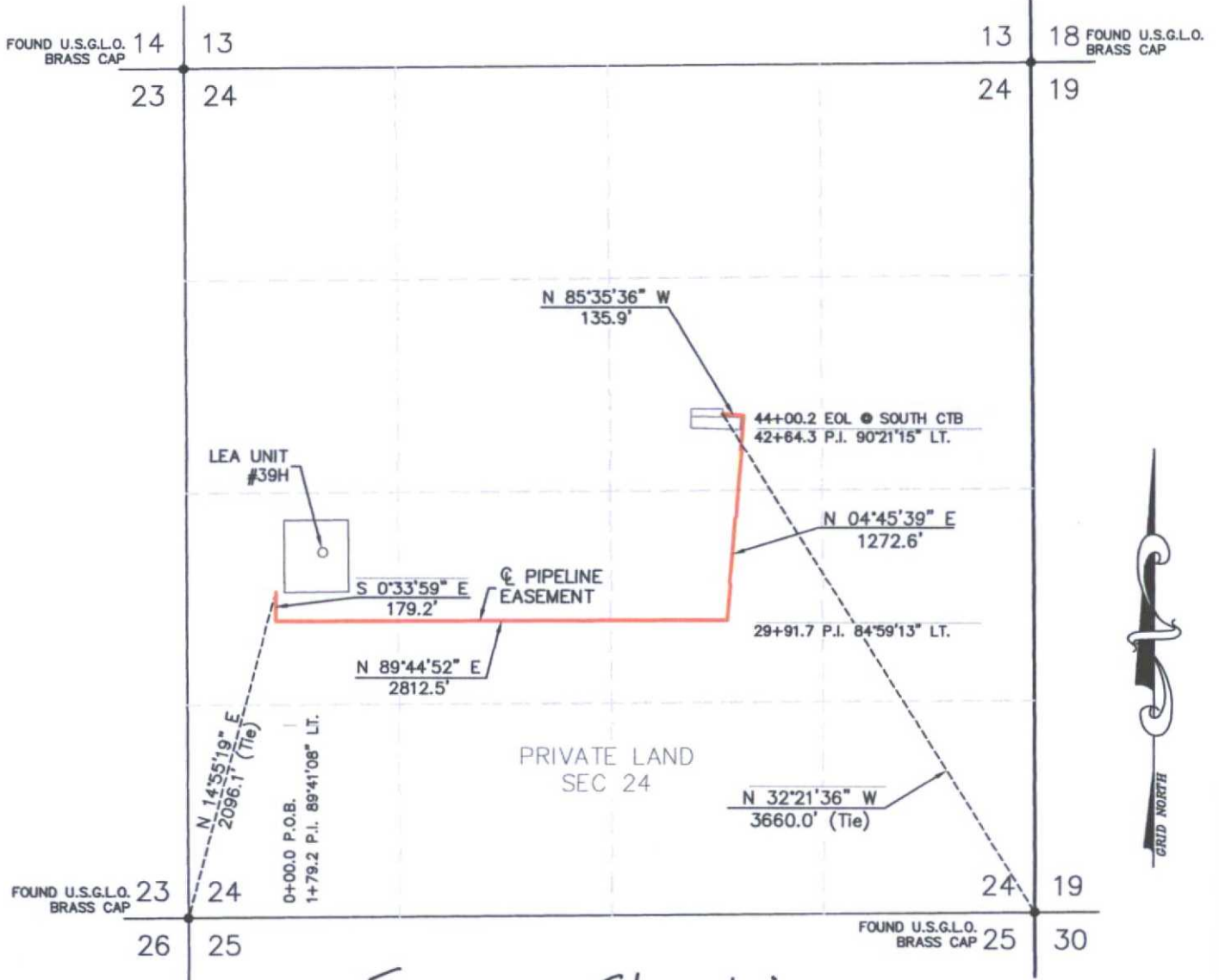
$$3'' = 1 \text{ mile}$$


Exhibit E

SECTION 24, TOWNSHIP 20 SOUTH, RANGE 34 EAST, N.M.P.M.  
LEA COUNTY NEW MEXICO



Ex. E - FlowLine

LEGAL DESCRIPTION

A STRIP OF LAND BEING 50 FEET WIDE, 4,400.2 FEET OR 0.833 MILES IN LENGTH AND BEING 25.0 FEET RIGHT AND 25.0 FEET LEFT OF THE ABOVE PLATTED CENTERLINE.

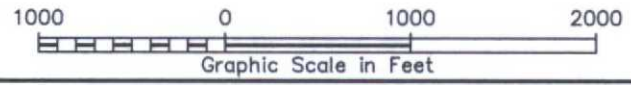
NOTE: The above platted centerline was created using data as provided by client and/or client's representative and has not been staked on the ground or in the field.



SURVEYORS - ENGINEERS - PLANNERS  
110 W. LOUISIANA AVE., SUITE 110  
MIDLAND, TEXAS 79701  
(432) 687-0865 - FAX (432) 687-0868

LEGEND

- - DENOTES FOUND MONUMENT (AS DESCRIBED)
- - DENOTES PIPE LINE



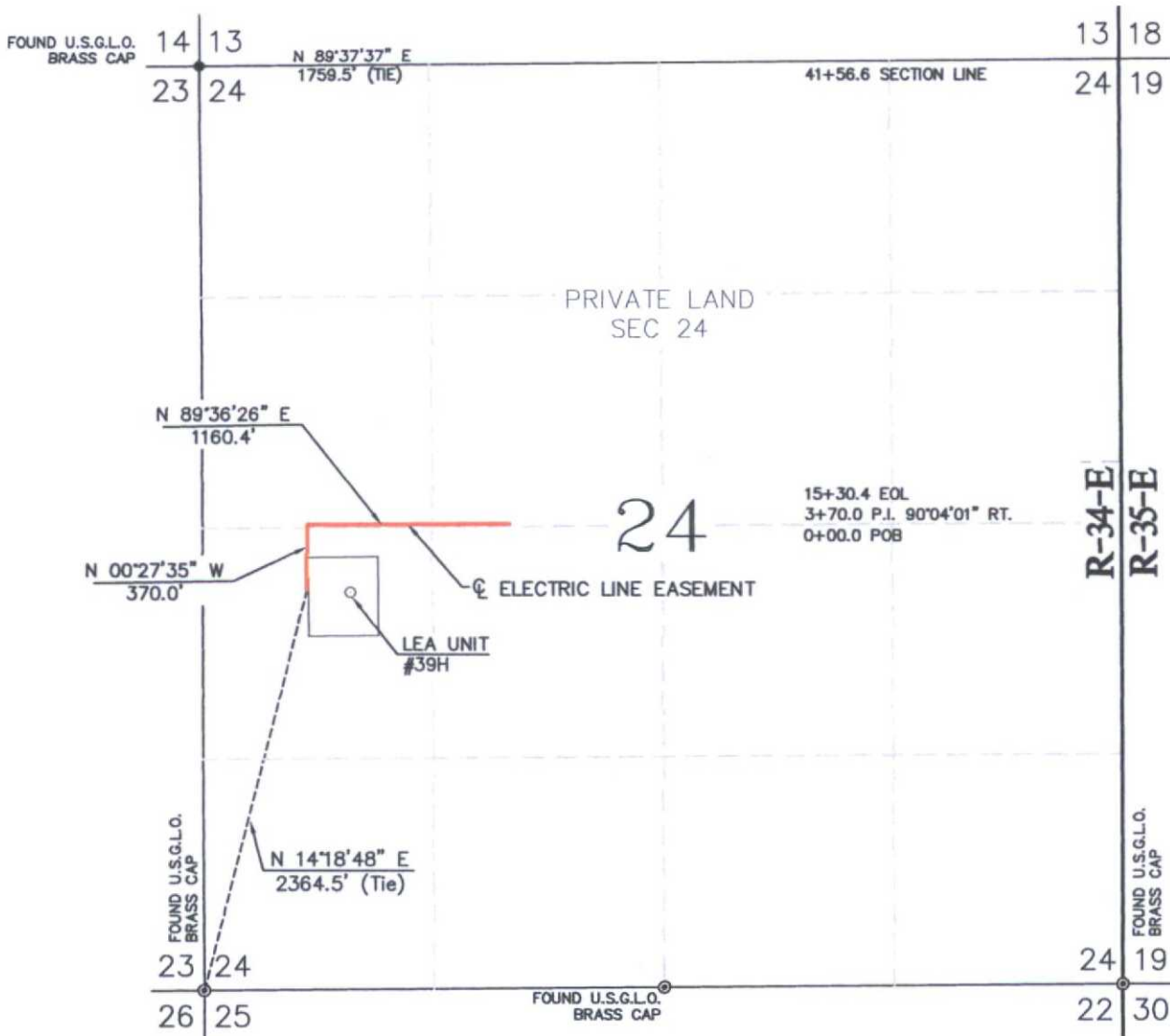
LEGACY RESERVES OPERATING LP

A PIPELINE EASEMENT LOCATED ON  
PRIVATE LAND IN SECTION 24  
TOWNSHIP 20 SOUTH, RANGE 34 EAST,  
N.M.P.M., LEA COUNTY, NEW MEXICO

Survey Date: N/A	Sheet 1 of 1 Sheets
W.O. Number: 2015-0416	Drawn By: SC/LRG
Date: 9-11-2015	2015-0416-U4.DWG
Scale: 1" = 1000'	

Exhibit F

SECTION 24, TOWNSHIP 20 SOUTH, RANGE 34 EAST, N.M.P.M.  
LEA COUNTY NEW MEXICO



LEGEND

- - DENOTES FOUND MONUMENT (AS DESCRIBED)
- - DENOTES CENTERLINE ELECTRIC EASEMENT

LEGAL DESCRIPTION

A STRIP OF LAND BEING 50 FEET WIDE, 1530.4 FEET OR 0.290 MILES IN LENGTH AND BEING 25.0 FEET RIGHT AND 25.0 FEET LEFT OF THE ABOVE PLATTED CENTERLINE.



LEGACY RESERVES OPERATING LP

AN ELECTRIC LINE EASEMENT LOCATED ON  
FEE LAND IN SECTION 24  
TOWNSHIP 20 SOUTH, RANGE 34 EAST,  
N.M.P.M., LEA COUNTY, NEW MEXICO



SURVEYORS - ENGINEERS - PLANNERS  
110 W. LOUISIANA AVE., SUITE 110  
MIDLAND, TEXAS 79701  
(432) 687-0865 - FAX (432) 687-0868

Survey Date: June 25, 2015	Sheet 1 of 1 Sheets
W.O. Number: 2015-0416	Drawn By: SC/LRG
Date: 9-11-2015	2015-0416-U5.DWG
Scale: 1" = 1000'	