

Submit 3 Copies To Appropriate District Office
District I
1625 N. French Dr., Hobbs, NM 88240
District II
1301 W. Grand Ave., Artesia, NM 88210
District III
1000 Rio Brazos Rd., Aztec, NM 87410
District IV
1220 S. St. Francis Dr., Santa Fe, NM 87505

State of New Mexico
Energy, Minerals and Natural Resources

HOBBS OCD

Form C-103
June 19, 2008

OIL CONSERVATION DIVISION
1220 South St. Francis Dr.
Santa Fe, NM 87505

DEC 22 2015

RECEIVED

WELL API NO. 301525-06628 ✓
5. Indicate Type of Lease STATE <input checked="" type="checkbox"/> FEE <input type="checkbox"/>
6. State Oil & Gas Lease No. BO-1557
7. Lease Name or Unit Agreement Name West Blinbry Drinkard Unit (WBDU) ✓
8. Well Number 060 ✓
9. OGRID Number 873
10. Pool name or Wildcat Eunice; B-T-D, North ✓
11. Elevation (Show whether DR, RKB, RT, GR, etc.) 3489' GR

SUNDRY NOTICES AND REPORTS ON WELLS
(DO NOT USE THIS FORM FOR PROPOSALS TO DRILL OR TO DEEPEN OR PLUG BACK TO A DIFFERENT RESERVOIR. USE "APPLICATION FOR PERMIT" (FORM C-101) FOR SUCH PROPOSALS.)

1. Type of Well: ☐ Oil Well ☐ Gas Well ☒ Other: Injection

2. Name of Operator
Apache Corporation ✓

3. Address of Operator
303 Veterans Airpark Lane, Suite 3000 Midland, TX 79705

4. Well Location

Unit Letter C : 720 feet from the North line and 1980 feet from the West line
Section 16 Township 21S Range 37E NMPM County Lea ✓

11. Elevation (Show whether DR, RKB, RT, GR, etc.)
3489' GR

12. Check Appropriate Box to Indicate Nature of Notice, Report or Other Data

NOTICE OF INTENTION TO:

PERFORM REMEDIAL WORK ☐ PLUG AND ABANDON ☐
TEMPORARILY ABANDON ☐ CHANGE PLANS ☐
PULL OR ALTER CASING ☐ MULTIPLE COMPL ☐
DOWNHOLE COMMINGLE ☐

OTHER: RC IN DRINKARD ☐

SUBSEQUENT REPORT OF:

REMEDIAL WORK ☐ ALTERING CASING ☐
COMMENCE DRILLING OPNS. ☐ P AND A ☐
CASING/CEMENT JOB ☐

OTHER: ☐

13. Describe proposed or completed operations. (Clearly state all pertinent details, and give pertinent dates, including estimated date of starting any proposed work). SEE RULE 1103. For Multiple Completions: Attach wellbore diagram of proposed completion or recompletion.

Apache would like to deepen this well, run a liner and complete in the Drinkard portion of the formation, per the attached procedure. Current and proposed WBD's are also attached.

* MUST RUN MIT PRIOR TO RETURNING
WELL TO INJECTION KQ

Spud Date: 05/06/1948

Rig Release Date: 07/14/1948

I hereby certify that the information above is true and complete to the best of my knowledge and belief.

SIGNATURE Reesa Fisher TITLE Sr. Staff Reg Analyst DATE 12/16/2015

Type or print name Reesa Fisher E-mail address: Reesa.Fisher@apachecorp.com PHONE: 432/818-1062

For State Use Only

APPROVED BY: [Signature] TITLE Petroleum Engineer DATE 12/23/15
Conditions of Approval (if any):

DEC 31 2015

1/4/16

cy

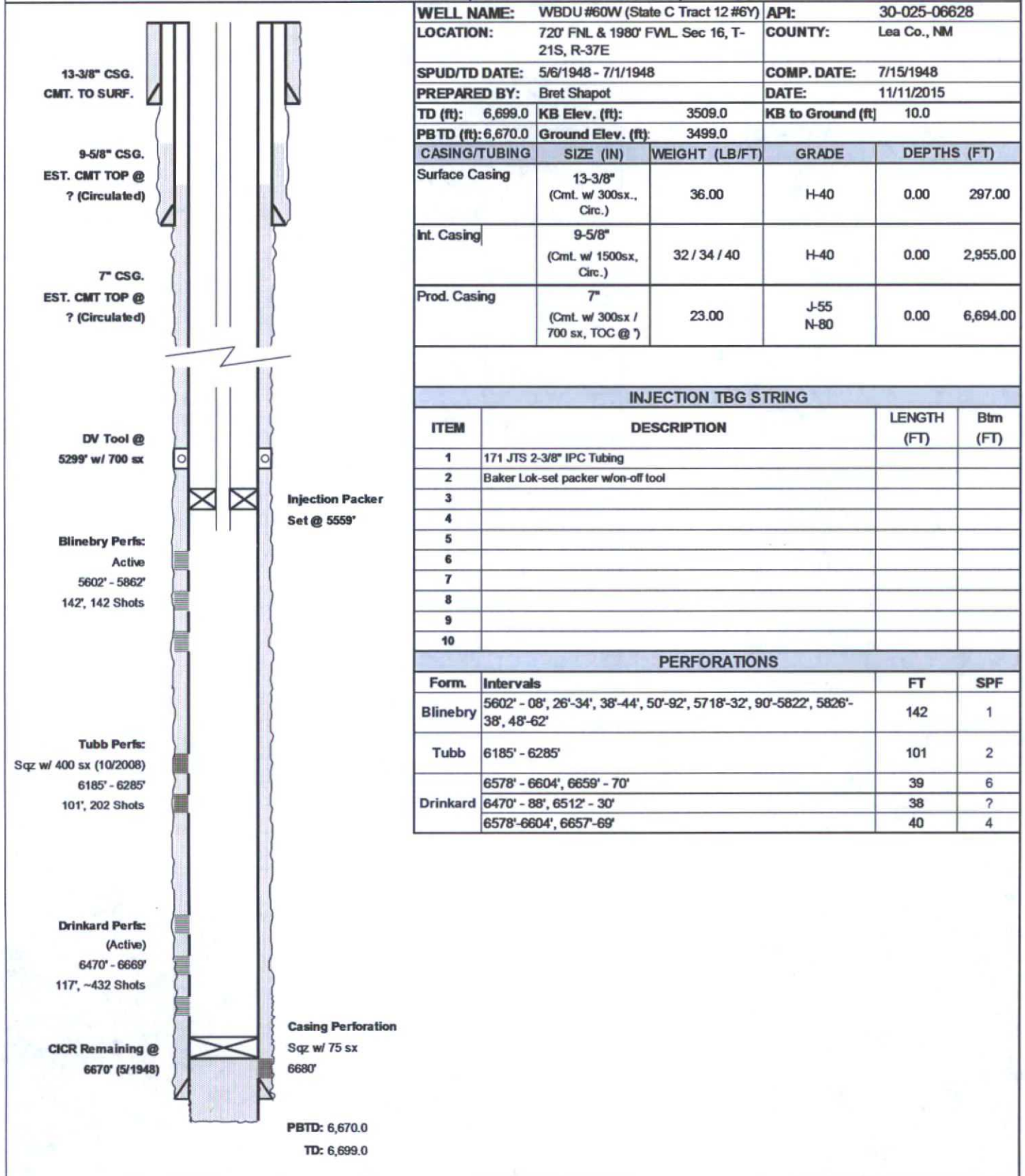
WBDU 60W (API: 30-25-06628) Proposed Procedure – November 11, 2015

Deepen Well, Run Liner, and recomplete in the Drinkard Formation

- Day 1:** MIRU. Release packer and POOH w/ 2-3/8" tubing, on/off tool, and packer. PU & RIH w/ 6-1/8" bit on 2-7/8" work string.
- Day 2:** Continue in hole with bit on 2-7/8" work string. Drill out CICR (potentially CIBP) @ +/- 6670'. Continue in hole and drill out well to new TD @ +/- 6765'.
- Day 3:** Continue to drill out well to TD @ +/- 6765'.
- Day 4:** Continue to drill out well to TD @ +/- 6765'. Circulate wellbore clean and POOH and LD 2-7/8" work string.
- Day 5:** RU casing crew and equipment and RIH with 4-1/2" 11.6 lb/ft LTC 8 RD J-55 casing with DV tool (set at +/- 5500'), float collar, and float shoe to +/- 6765'. Perform two stage cement job to surface as follows:
- Pump first stage consisting of 10 bbl fresh water flush, 40 bbl seal bond LCM spacer, and 214 sacks of 50:50 Fly Ash (Pozzolan):Class C cement + additives (weight 14.2 ppg, yield 1.31 cf/sack, volume 49.8 bbls, 100% excess slurry)
 - Drop plug, displace with 105 bbl fresh water (confirm volumes) and bump plug. Drop dart. Open DV tool and set packer to isolate first stage cement.
 - Pump second cement stage consisting of 20 bbl fresh water flush, lead slurry of 330 sacks 35:65 Fly Ash (Pozzolan):Class C cement + additives (weight 12.5 ppg, yield 2.13 cf/sack, 125.5 bbl), tail slurry of 100 sacks of class C cement + additives (weight 14.8 ppg, yield 1.33 cf/sack, 23.7 bbl)
 - Drop DV tool plug, displace with 85.4 bbl fresh water (confirm volumes)
- Day 6:** WOC
- Day 7:** RIH w/ 3-1/4" bit on 2-3/8" work string. Drill out DV tool, float collar and cement to +/- 6750'. Circulate clean. POOH
- Day 8:** MIRU WL and RIH w/ GR/CBL/CCL, log well from TD to surface, POOH
- PU and RIH w/ 3-1/8" TAGs loaded with SDP charges and perforate the Drinkard @ 4 SPF, 90 deg phasing (estimated 70', 280 shots), POOH
- PU and RIH w/ treating packer on 2-3/8" work string
- Day 9:** Cont. RIH w/ treating packer on 2-3/8" work string. Set packer @ +/-6500'
- MIRU crew. Acidize the Drinkard w/10,000 gals 15% HCl and rock salt in 3 equal stages @ +/- 10 BPM. Release packer. Wash out salt. POOH
- Day 10:** PU and RIH with 4-1/2" injection packer with 2-3/8" IPC tubing subs, upper and lower profile nipples, and on/off tool on 2-3/8" work string. Set packer @ +/-6500'. Release on/off tool and pressure test casing to 500 psi. POOH and LD 2-3/8" work string
- Day 11:** PU & RIH w/2-3/8" IPC injection tubing and on/off tool. Circulate packer fluid and latch onto packer with on/off tool. ND BOPs and NU WH. Pressure test casing to 500 psi. RDMO SR
- Day 12:** Perform MIT test for NM OCD. Place well on injection

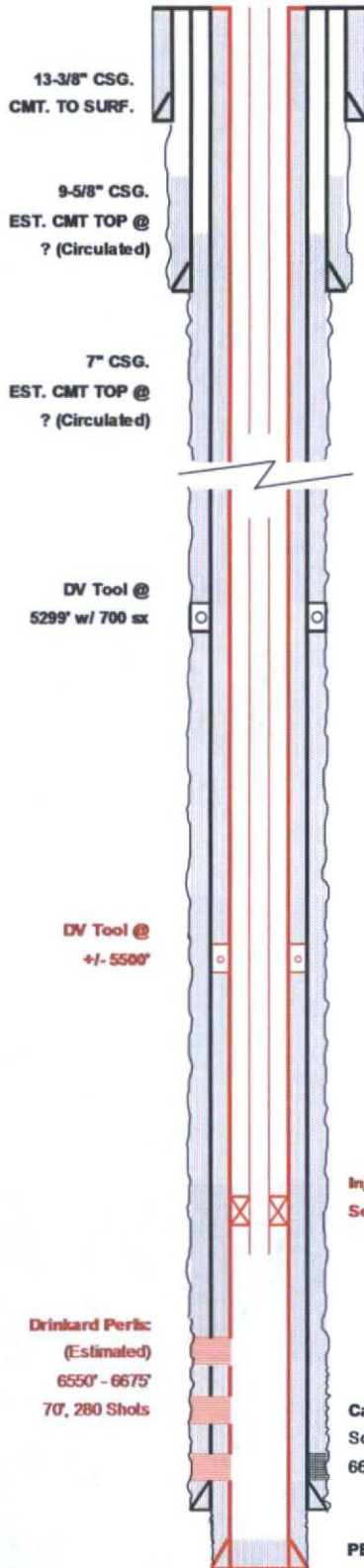
Current Wellbore Diagram

Apache Corporation
WBDU #60W (State C Tract 12 #6Y)
WELL DIAGRAM (CURRENT CONFIGURATION)



Proposed Wellbore Diagram

Apache Corporation WBDU #60W (State C Tract 12 #6Y) WELL DIAGRAM (PROPOSED CONFIGURATION)



WELL NAME: WBDU #60W (State C Tract 12 #6Y)		API: 30-025-06628			
LOCATION: 720' FNL & 1980' FWL Sec 16, T-21S, R-37E		COUNTY: Lea Co., NM			
SPUD/TD DATE: 5/6/1948 - 7/1/1948		COMP. DATE: 7/15/1948			
PREPARED BY: Bret Shapot		DATE: 11/11/2015			
TD (ft): 6,765.0	KB Elev. (ft): 3509.0	KB to Ground (ft) 10.0			
PBTD (ft): 6,750.0	Ground Elev. (ft): 3499.0				
CASING/TUBING	SIZE (IN)	WEIGHT (LB/FT)	GRADE	DEPTHS (FT)	
Surface Casing	13-3/8" (Cmt. w/ 300sx., Circ.)	36.00	H-40	0.00	297.00
Int. Casing	9-5/8" (Cmt. w/ 1500sx, Circ.)	32 / 34 / 40	H-40	0.00	2,955.00
Prod. Casing	7" (Cmt. w/ 300sx / 700 sx, TOC @)	23.00	J-55 N-80	0.00	6,694.00
Liner	4-1/2" Cmt. To surf	11.60	J-55	0.00	6,765.00
INJECTION TBG STRING					
ITEM	DESCRIPTION			LENGTH (FT)	Btm (FT)
1	2-3/8" 4.7 LB/FT J-55 IPC TBG			6,492.00	6492.00
2	2-3/8" ON/OFF TOOL W/ 1.78 F PROFILE			1.80	6493.80
3	2-3/8" X 4-1/2" NICKLE PLATED ARROW-SET PKR			6.20	6500.00
4	2-3/8" 4.7 LB/FT J-55 IPC TBG			8.00	6508.00
5	2-3/8" PROFILE NIPPLE 1.50 R			0.90	6508.90
6	2-3/8" 4.7 LB/FT J-55 IPC TBG			6.00	6,514.90
7					
8					
9					
10					
PERFORATIONS					
Form.	Intervals			FT	SPF
Drinkard	(Estimated) 6500' - 6675'			70	4

Injection Packer
Set @ 6500'

Drinkard Perfor.
(Estimated)
6550' - 6675'
70', 280 Shots

Casing Perforation
Sqz w/ 75 sx
6680'

PBTD: 6,750.0
TD: 6,765.0