

UNITED STATES
DEPARTMENT OF THE INTERIOR
BUREAU OF LAND MANAGEMENT

OCD Hobbs

FORM APPROVED
OMB NO. 1004-0135
Expires: July 31, 2010**SUNDRY NOTICES AND REPORTS ON WELLS**
*Do not use this form for proposals to drill or to re-enter an abandoned well. Use form 3160-3 (APD) for such proposals.*5. Lease Serial No.
NMNM19859

6. If Indian, Allottee or Tribe Name

7. If Unit or CA/Agreement, Name and/or No.

8. Well Name and No.
TRISTE DRAW 3 FEDERAL 19. API Well No.
30-025-3451810. Field and Pool, or Exploratory
JOHNSON RANCH WOLFCAMP11. County or Parish, and State
LEA COUNTY, NM**SUBMIT IN TRIPLICATE - Other instructions on reverse side.**

1. Type of Well

☐ Oil Well ☒ Gas Well ☐ Other

2. Name of Operator

EOG RESOURCES, INC.

Contact: STAN WAGNER

E-Mail: stan_wagner@eogresources.com

3a. Address

P.O. BOX 2267
MIDLAND, TX 79702

3b. Phone No. (include area code)

Ph: 432-686-3689

4. Location of Well (Footage, Sec., T., R., M., or Survey Description)

Sec 3 T25S R33E 1826FNL 660FEL

12. CHECK APPROPRIATE BOX(ES) TO INDICATE NAT

TYPE OF SUBMISSION

☒ Notice of Intent☐ Subsequent Report☐ Final Abandonment Notice☐ Acidize☐ Alter Casing☐ Casing Repair☐ Change Plans☐ Convert to Injection☐ Deepen☐ Fracture Treat☐ New Construction☒ Plug and Abandon☐ Plug Back☐ Reclama..☐ Recomplete☐ Temporarily Abandon☐ Water Disposal

E-PERMITTING <SWD DATA
CONVERSION
RETURN TO
CSNG
INT TO P&A
ENVIRO
P&A NR
INJECTION
RBDMS
TA
CHG LOC
P&A R

13. Describe Proposed or Completed Operation (clearly state all pertinent details, including estimated starting date of any proposed work and approximate duration thereof. If the proposal is to deepen directionally or recompleat horizontally, give subsurface locations and measured and true vertical depths of all pertinent markers and zones. Attach the Bond under which the work will be performed or provide the Bond No. on file with BLM/BIA. Required subsequent reports shall be filed within 30 days following completion of the involved operations. If the operation results in a multiple completion or recompleat in a new interval, a Form 3160-4 shall be filed once testing has been completed. Final Abandonment Notices shall be filed only after all requirements, including reclamation, have been completed, and the operator has determined that the site is ready for final inspection.)

EOG Resources proposes to P&A this well as follows:

1. ~~Dump bail 35'~~ of Class H cement on existing CIBP at 12851'. **SEE COA**
2. Spot 30 sx Class H cement plug at 10450' to 10750'. WOC and Tag. **SEE COA**
3. Spot 30 sx Class H cement plug at 9200' to 9400'. **SEE COA**
4. Spot 30 sx Class H cement plug at 6500' to 6700'. **SEE COA**
5. Cut 5-1/2" casing at 5100' & POOH w/ same.
6. Spot 75 sx Class C cement plug at 4900' to 5200'. WOC and Tag.
7. Spot 65 sx Class C cement plug at 1600' to 1900'. **SEE COA**
8. Spot 65 sx Class C cement plug at 600' to 700'. WOC and Tag. **SEE COA**
9. Spot 30 sx Class C surface plug. Ensure there is cement to surface in all annuluses. **SEE COA**
10. Clean location, cut off anchors 3' below surface, cut off wellhead 3' below surface. Weld on

SEE ATTACHED FOR
CONDITIONS OF APPROVAL
RECLAMATION PROCEDURE
ATTACHED

14. I hereby certify that the foregoing is true and correct.

Electronic Submission #319809 verified by the BLM Well Information System
For EOG RESOURCES, INC., sent to the Hobbs
Committed to AFMSS for processing by LINDA JIMENEZ on 10/23/2015 ()

Name (Printed/Typed) STAN WAGNER

Title REGULATORY ANALYST

Signature (Electronic Submission)

Date 10/14/2015

THIS SPACE FOR FEDERAL OR STATE OFFICE USE

Approved By

Title

Date

Conditions of approval, if any, are attached. Approval of this notice does not warrant or certify that the applicant holds legal or equitable title to those rights in the subject lease which would entitle the applicant to conduct operations thereon.

Office

APPROVED
PETROLEUM ENGINEER
DEC 10 2015
Kenneth Rennick
BUREAU OF LAND MANAGEMENT
CARLSBAD FIELD OFFICE

Title 18 U.S.C. Section 1001 and Title 43 U.S.C. Section 1212, make it a crime for any person knowingly and willfully to make to any department or agency of the United States any false, fictitious or fraudulent statements or representations as to any matter within its jurisdiction.

** OPERATOR-SUBMITTED ** OPERATOR-SUBMITTED ** OPERATOR-SUBMITTED **

MW/OCD
12/22/2015

Accepted for Record Only

DEC 31 2015 11/4/16

Additional data for EC transaction #319809 that would not fit on the form

32. Additional remarks, continued

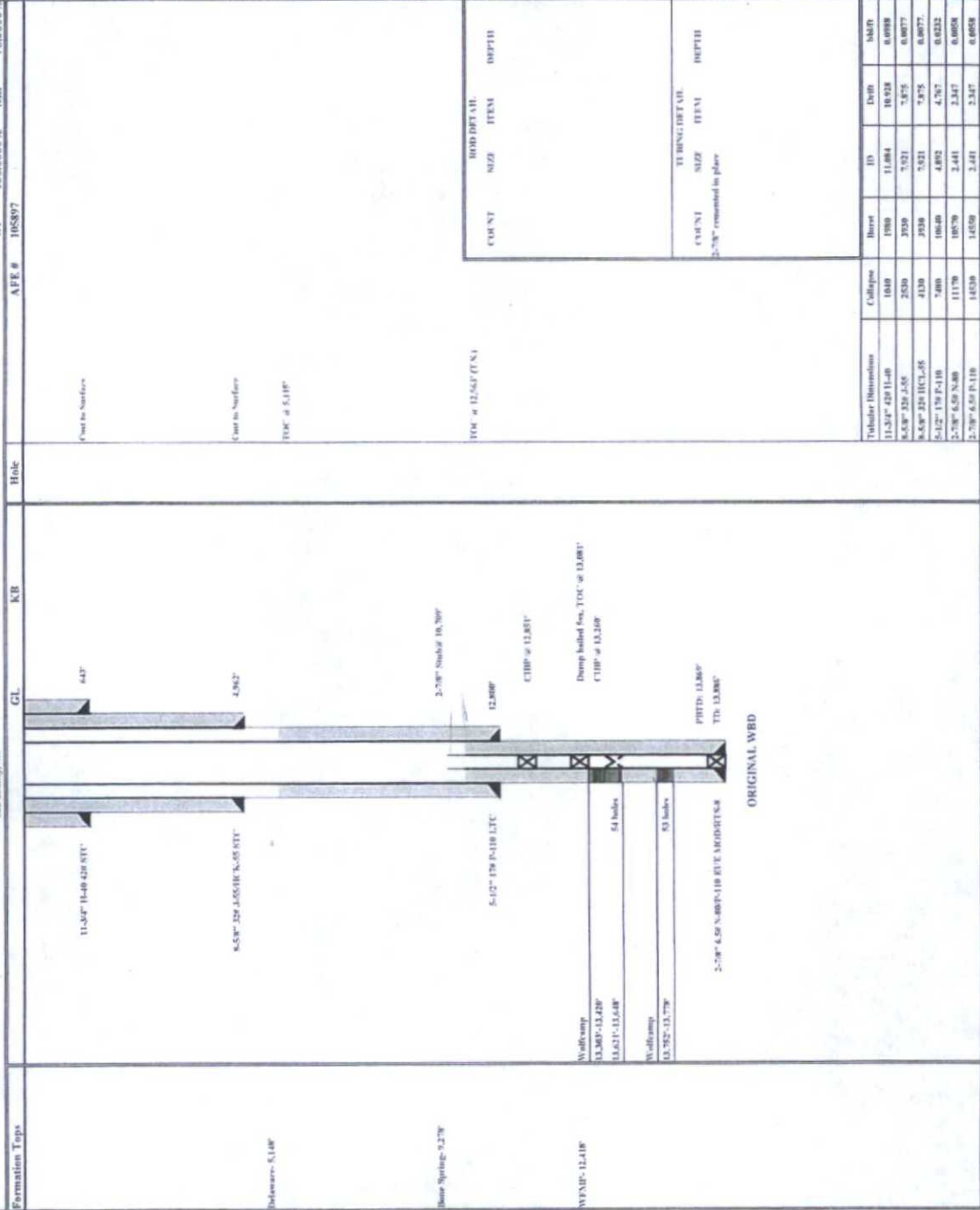
P&A marker.

TRISTE DRAW 3 FED #1

APR 30-025-34518
Sect 3, T25S, R31E
1824' PBL & 640' REL
Lea County, NM




SPUD TO
DRILLING 2/3/1999 2/17/1999
LAST REVISED 4/17/2014 SMB
WI 100.0000% NRI 70.0000%



ORIGINAL WBD

APR 30-025-3 4518
Sect 3, T25S, R3E
1826' FNL & 660' FEL.
Lea County, NM



eog resources
energy opportunity growth

	SPUD	TD
DRILLING	2/3/1999	2/27/1999
LAST REISED	4/17/2014	5MB
100.0000%	NRI	78.0000%

Formation Type	GL	KIB	Hole	AFE #
Top Soil 100'	30' to Surface	600' 700' - Tag 65' Soil Class C	7' 80' to Top Soil 11.3-11.40 100' CT - 8.415'	
Base Soil 100'	60' Soil Class C - Tag 1000' 1000'	65' Soil Class C - Tag 1000' 1000'	8.50" 120' 1.0510EN 65' CT - 8.415'	
Delaware 63.40'	75' Soil Class C - Tag 4.000' 5.200'	75' Soil Class C - Tag 4.000' 5.200'	7' 80' to Surface	
Base Spring 5.270'	For 6.127' CT of 5.100'	For 6.127' CT of 5.100'	100' at 5.115'	
	30' Soil Class II 6.000' 6.200'	30' Soil Class II 6.000' 6.200'		
	30' Soil Class II 9.200' 9.400'	30' Soil Class II 9.200' 9.400'		
	30' Soil Class II - Tag 10.400' 7.200'	30' Soil Class II - Tag 10.400' 7.200'		
	2.700' Soil at 10.700'	2.700' Soil at 10.700'		
	12.000'		100' at 12.000' (1.5)	
	CTBP - 12.000' - 35'			
	CTBP - 35' at 12.200'			
	PRETS 13.000'			
	TTB 13.000'			
	2.700' 6.50' 8.400' 110' 111' 112' 113' 114' 115' 116' 117' 118' 119' 120' 121' 122' 123' 124' 125' 126' 127' 128' 129' 130' 131' 132' 133' 134' 135' 136' 137' 138' 139' 140' 141' 142' 143' 144' 145' 146' 147' 148' 149' 150' 151' 152' 153' 154' 155' 156' 157' 158' 159' 160' 161' 162' 163' 164' 165' 166' 167' 168' 169' 170' 171' 172' 173' 174' 175' 176' 177' 178' 179' 180' 181' 182' 183' 184' 185' 186' 187' 188' 189' 190' 191' 192' 193' 194' 195' 196' 197' 198' 199' 200' 201' 202' 203' 204' 205' 206' 207' 208' 209' 210' 211' 212' 213' 214' 215' 216' 217' 218' 219' 220' 221' 222' 223' 224' 225' 226' 227' 228' 229' 230' 231' 232' 233' 234' 235' 236' 237' 238' 239' 240' 241' 242' 243' 244' 245' 246' 247' 248' 249' 250' 251' 252' 253' 254' 255' 256' 257' 258' 259' 260' 261' 262' 263' 264' 265' 266' 267' 268' 269' 270' 271' 272' 273' 274' 275' 276' 277' 278' 279' 280' 281' 282' 283' 284' 285' 286' 287' 288' 289' 290' 291' 292' 293' 294' 295' 296' 297' 298' 299' 300' 301' 302' 303' 304' 305' 306' 307' 308' 309' 310' 311' 312' 313' 314' 315' 316' 317' 318' 319' 320' 321' 322' 323' 324' 325' 326' 327' 328' 329' 330' 331' 332' 333' 334' 335' 336' 337' 338' 339' 340' 341' 342' 343' 344' 345' 346' 347' 348' 349' 350' 351' 352' 353' 354' 355' 356' 357' 358' 359' 360' 361' 362' 363' 364' 365' 366' 367' 368' 369' 370' 371' 372' 373' 374' 375' 376' 377' 378' 379' 380' 381' 382' 383' 384' 385' 386' 387' 388' 389' 390' 391' 392' 393' 394' 395' 396' 397' 398' 399' 400' 401' 402' 403' 404' 405' 406' 407' 408' 409' 410' 411' 412' 413' 414' 415' 416' 417' 418' 419' 420' 421' 422' 423' 424' 425' 426' 427' 428' 429' 430' 431' 432' 433' 434' 435' 436' 437' 438' 439' 440' 441' 442' 443' 444' 445' 446' 447' 448' 449' 450' 451' 452' 453' 454' 455' 456' 457' 458' 459' 460' 461' 462' 463' 464' 465' 466' 467' 468' 469' 470' 471' 472' 473' 474' 475' 476' 477' 478' 479' 480' 481' 482' 483' 484' 485' 486' 487' 488' 489' 490' 491' 492' 493' 494' 495' 496' 497' 498' 499' 500' 501' 502' 503' 504' 505' 506' 507' 508' 509' 510' 511' 512' 513' 514' 515' 516' 517' 518' 519' 520' 521' 522' 523' 524' 525' 526' 527' 528' 529' 530' 531' 532' 533' 534' 535' 536' 537' 538' 539' 540' 541' 542' 543' 544' 545' 546' 547' 548' 549' 550' 551' 552' 553' 554' 555' 556' 557' 558' 559' 560' 561' 562' 563' 564' 565' 566' 567' 568' 569' 570' 571' 572' 573' 574' 575' 576' 577' 578' 579' 580' 581' 582' 583' 584' 585' 586' 587' 588' 589' 590' 591' 592' 593' 594' 595' 596' 597' 598' 599' 600' 601' 602' 603' 604' 605' 606' 607' 608' 609' 610' 611' 612' 613' 614' 615' 616' 617' 618' 619' 620' 621' 622' 623' 624' 625' 626' 627' 628' 629' 630' 631' 632' 633' 634' 635' 636' 637' 638' 639' 640' 641' 642' 643' 644' 645' 646' 647' 648' 649' 650' 651' 652' 653' 654' 655' 656' 657' 658' 659' 660' 661' 662' 663' 664' 665' 666' 667' 668' 669' 670' 671' 672' 673' 674' 675' 676' 677' 678' 679' 680' 681' 682' 683' 684' 685' 686' 687' 688' 689' 690' 691' 692' 693' 694' 695' 696' 697' 698' 699' 700' 701' 702' 703' 704' 705' 706' 707' 708' 709' 710' 711' 712' 713' 714' 715' 716' 717' 718' 719' 720' 721' 722' 723' 724' 725' 726' 727' 728' 729' 730' 731' 732' 733' 734' 735' 736' 737' 738' 739' 740' 741' 742' 743' 744' 745' 746' 747' 748' 749' 750' 751' 752' 753' 754' 755' 756' 757' 758' 759' 760' 761' 762' 763' 764' 765' 766' 767' 768' 769' 770' 771' 772' 773' 774' 775' 776' 777' 778' 779' 780' 781' 782' 783' 784' 785' 786' 787' 788' 789' 790' 791' 792' 793' 794' 795' 796' 797' 798' 799' 800' 801' 802' 803' 804' 805' 806' 807' 808' 809' 810' 811' 812' 813' 814' 815' 816' 817' 818' 819' 820' 821' 822' 823' 824' 825' 826' 827' 828' 829' 830' 831' 832' 833' 834' 835' 836' 837' 838' 839' 840' 841' 842' 843' 844' 845' 846' 847' 848' 849' 850' 851' 852' 853' 854' 855' 856' 857' 858' 859' 860' 861' 862' 863' 864' 865' 866' 867' 868' 869' 870' 871' 872' 873' 874' 875' 876' 877' 878' 879' 880' 881' 882' 883' 884' 885' 886' 887' 888' 889' 890' 891' 892' 893' 894' 895' 896' 897' 898' 899' 900' 901' 902' 903' 904' 905' 906' 907' 908' 909' 910' 911' 912' 913' 914' 915' 916' 917' 918' 919' 920' 921' 922' 923' 924' 925' 926' 927' 928' 929' 930' 931' 932' 933' 934' 935' 936' 937' 938' 939' 940' 941' 942' 943' 944' 945' 946' 947' 948' 949' 950' 951' 952' 953' 954' 955' 956' 957' 958' 959' 960' 961' 962' 963' 964' 965' 966' 967' 968' 969' 970' 971' 972' 973' 974' 975' 976' 977' 978' 979' 980' 981' 982' 983' 984' 985' 986' 987' 988' 989' 990' 991' 992' 993' 994' 995' 996' 997' 998' 999' 1000'			
WMP - 12.00'	Wellstop 9.500' 13.400' 9.621' 13.600'	54 holes		
	Wellstop 13.225' 13.270'	53 holes		
	2.700' 6.50' 8.400' 110' 111' 112' 113' 114' 115' 116' 117' 118' 119' 120' 121' 122' 123' 124' 125' 126' 127' 128' 129' 130' 131' 132' 133' 134' 135' 136' 137' 138' 139' 140' 141' 142' 143' 144' 145' 146' 147' 148' 149' 150' 151' 152' 153' 154' 155' 156' 157' 158' 159' 160' 161' 162' 163' 164' 165' 166' 167' 168' 169' 170' 171' 172' 173' 174' 175' 176' 177' 178' 179' 180' 181' 182' 183' 184' 185' 186' 187' 188' 189' 190' 191' 192' 193' 194' 195' 196' 197' 198' 199' 200' 201' 202' 203' 204' 205' 206' 207' 208' 209' 210' 211' 212' 213' 214' 215' 216' 217' 218' 219' 220' 221' 222' 223' 224' 225' 226' 227' 228' 229' 230' 231' 232' 233' 234' 235' 236' 237' 238' 239' 240' 241' 242' 243' 244' 245' 246' 247' 248' 249' 250' 251' 252' 253' 254' 255' 256' 257' 258' 259' 260' 261' 262' 263' 264' 265' 266' 267' 268' 269' 270' 271' 272' 273' 274' 275' 276' 277' 278' 279' 280' 281' 282' 283' 284' 285' 286' 287' 288' 289' 290' 291' 292' 293' 294' 295' 296' 297' 298' 299' 300' 301' 302' 303' 304' 305' 306' 307' 308' 309' 310' 311' 312' 313' 314' 315' 316' 317' 318' 319' 320' 321' 322' 323' 324' 325' 326' 327' 328' 329' 330' 331' 332' 333' 334' 335' 336' 337' 338' 339' 340' 341' 342' 343' 344' 345' 346' 347' 348' 349' 350' 351' 352' 353' 354' 355' 356' 357' 358' 359' 360' 361' 362' 363' 364' 365' 366' 367' 368' 369' 370' 371' 372' 373' 374' 375' 376' 377' 378' 379' 380' 381' 382' 383' 384' 385' 386' 387' 388' 389' 390' 391' 392' 393' 394' 395' 396' 397' 398' 399' 400' 401' 402' 403' 404' 405' 406' 407' 408' 409' 410' 411' 412' 413' 414' 415' 416' 417' 418' 419' 420' 421' 422' 423' 424' 425' 426' 427' 428' 429' 430' 431' 432' 433' 434' 435' 436' 437' 438' 439' 440' 441' 442' 443' 444' 445' 446' 447' 448' 449' 450' 451' 452' 453' 454' 455' 456' 457' 458' 459' 460' 461' 462' 463' 464' 465' 466' 467' 468' 469' 470' 471' 472' 473' 474' 475' 476' 477' 478' 479' 480' 481' 482' 483' 484' 485' 486' 487' 488' 489' 490' 491' 492' 493' 494' 495' 496' 497' 498' 499' 500' 501' 502' 503' 504' 505' 506' 507' 508' 509' 510' 511' 512' 513' 514' 515' 516' 517' 518' 519' 520' 521' 522' 523' 524' 525' 526' 527' 528' 529' 530' 531' 532' 533' 534' 535' 536' 537' 538' 539' 540' 541' 542' 543' 544' 545' 546' 547' 548' 549' 550' 551' 552' 553' 554' 555' 556' 557' 558' 559' 560' 561' 562' 563' 564' 565' 566' 567' 568' 569' 570' 571' 572' 573' 574' 575' 576' 577' 578' 579' 580' 581' 582' 583' 584' 585' 586' 587' 588' 589' 590' 591' 592' 593' 594' 595' 596' 597' 598' 599' 600' 601' 602' 603' 604' 605' 606' 607' 608' 609' 610' 611' 612' 613' 614' 615' 616' 617' 618' 619' 620' 621' 622' 623' 624' 625' 626' 627' 628' 629' 630' 631' 632' 633' 634' 635' 636' 637' 638' 639' 640' 641' 642' 643' 644' 645' 646' 647' 648' 649' 650' 651' 652' 653' 654' 655' 656' 657' 658' 659' 660' 661' 662' 663' 664' 665' 666' 667' 668' 669' 670' 671' 672' 673' 674' 675' 676' 677' 678' 679' 680' 681' 682' 683' 684' 685' 686' 687' 688' 689' 690' 691' 692' 693' 694' 695' 696' 697' 698' 699' 700' 701' 702' 703' 704' 705' 706' 707' 708' 709' 710' 711' 712' 713' 714' 715' 716' 717' 718' 719' 720' 721' 722' 723' 724' 725' 726' 727' 728' 729' 730' 731' 732' 733' 734' 735' 736' 737' 738' 739' 740' 741' 742' 743' 744' 745' 746' 747' 748' 749' 750' 751' 752' 753' 754' 755' 756' 757' 758' 759' 760' 761' 762' 763' 764' 765' 766' 767' 768' 769' 770' 771' 772' 773' 774' 775' 776' 777' 778' 779' 780' 781' 782' 783' 784' 785' 786' 787' 788' 789' 790' 791' 792' 793' 794' 795' 796' 797' 798' 799' 800' 801' 802' 803' 804' 805' 806' 807' 808' 809' 810' 811' 812' 813' 814' 815' 816' 817' 818' 819' 820' 821' 822' 823' 824' 825' 826' 827' 828' 829' 830' 831' 832' 833' 834' 835' 836' 837' 838' 839' 840' 841' 842' 843' 844' 845' 846' 847' 848' 849' 850' 851' 852' 853' 854' 855' 856' 857' 858' 859' 860' 861' 862' 863' 864' 865' 866' 867' 868' 869' 870' 871' 872' 873' 874' 875' 876' 877' 878' 879' 880' 881' 882' 883' 884' 885' 886' 887' 888' 889' 890' 891' 892' 893' 894' 895' 896' 897' 898' 899' 900' 901' 902' 903' 904' 905' 906' 907' 908' 909' 910' 911' 912' 913' 914' 915' 916' 917' 918' 919' 920' 921' 922' 923' 924' 925' 926' 927' 928' 929' 930' 931' 932' 933' 934' 935' 936' 937' 938' 939' 940' 941' 942' 943' 944' 945' 946' 947' 948' 949' 950' 951' 952' 953' 954' 955' 956' 957' 958' 959' 960' 961' 962' 963' 964' 965' 966' 967' 968' 969' 970' 971' 972' 973' 974' 975' 976' 977' 978' 979' 980' 981' 982' 983' 984' 985' 986' 987' 988' 989' 990' 991' 992' 993' 994' 995' 996' 997' 998' 999' 1000'			

Triste Draw 3 Federal
30-025-34518
EOG Resources, Inc
Surface Location: Sec. 3, T. 25S, R. 33E
Conditions of Approval

Notify BLM at 575-393-3612 (Lea County) a minimum of 24 hours prior to commencing work. Some procedures are to be witnessed, which for this case shall be the tagging of certain Cement Plugs. If there is no response, leave a voice mail with the API#, workover purpose and a call back phone number.

Due to being within the Lesser Prairie Chicken habitat, this workover activity will be restricted to the hours of 9:00am through 3:00am for the period of March 1 through June 15. Exceptions to these restrictions may be granted by BLM's Mr. Johnny Chopp <jchopp@blm.gov or 575.234.2227>.

Work to be completed by within ninety (90) days from the approval date.

1. A minimum of a **2000 (2M)** BOP to be used. All blowout preventer (BOP) and related equipment (BOPE) shall comply with reasonable well control requirements. A two ram system with a blind ram and a pipe ram designed for the size of the work string shall be adequate. Tapered work strings will require an additional pipe ram. The manifold shall comply with Onshore Oil and Gas Order #2 Attachment I (2M Diagrams of Choke Manifold Equipment). The accumulator system shall have an immediately available power source to close the rams and retain 200 psi above pre-charge. The pre-charge test shall follow requirements in Onshore Order #2.
2. Operator to have H2S monitoring equipment on location.
3. Operator is approved to cap the CIBP at 12,851 (**Operator Step #1**). To achieve this, Operator shall pump a minimum of 25 sacks of Class H Cement. Tag is required at, or above, 12,601 feet to ensure coverage of the Production Casing Shoe.
4. **Before Operator Step #2**, Operator shall set a plug to cover top of Wolfcamp formation at 12,418 feet. Perforate at 12,468 and squeeze to 12,243 feet with a minimum of 25 sacks of Class H Cement. Tag is required at 12,243 feet.
5. Operator is approved to set a plug to cover the Production Line Stub at 10,709 feet (**Operator Step #2**). The plug shall cover the interval of 10,759 to 10,549 feet, 50 feet below the stub, and shall be a minimum of 25 sacks of Class H Cement. Tag is required.

6. Operator is approved to set a plug as proposed to cover the top of Bone Spring formation and the interval of 9400 to 9200 feet **(Operator Step #3)**.
7. Operator is approved to set a plug as proposed to cover the interval of 6700 to 6500 feet **(Operator Step #4)**.
8. Operator is approved to cut 5 1/2 inch casing at 5100 feet **(Operator Step #5)**. As well as to set a plug as proposed in the interval of 5200 to 4900 feet **(Operator Step #6)** to cover the Production Casing Stub, the top of Delaware formation, the Intermediate Casing Shoe and the bottom of the salt. Tag is required.
9. Operator is approved to set a plug to cover the top of salt at 1600 feet **(Operator Step #7)**. The plug shall cover the interval of 1900 to 1550 feet, 50 feet above the salt and be a minimum of 25 sacks of cement. Tag is required.
10. Operator is approved to set a plug to cover the Surface Casing Shoe at 643 feet **(Operator Step #8)**. The plug shall cover the interval of 700 to 590 feet, at least 50 feet above the shoe and be a minimum of 25 sacks of cement. Tag is required.
11. Operator is approved to set surface plug, but shall set the bottom of the plug at a minimum of 60 feet. As well as ensure cement is in all annuluses and set the surface marker **(Operator Steps #9 and #10)**.
12. Surface disturbance beyond the originally approved pad must have prior approval.
13. Closed loop system required.
14. All waste (i.e. drilling fluids, trash, salts, chemicals, sewage, gray water, etc.) created as a result of work over operations shall be safely contained and disposed of properly at a waste disposal facility. No waste material or fluid shall be disposed of on the well location or surrounding area. Porto-johns and trash containers will be on-location during fracturing operations or any other crew-intensive operations.
15. **Subsequent sundry required detailing work done. Operator to include well bore schematic of current well condition when work is complete.**
16. **See attached for the general guidelines to permanently abandon Federal Wells and reclamation procedure.**

KGR 12092015

**BUREAU OF LAND MANAGEMENT
Carlsbad Field Office
620 East Greene Street
Carlsbad, New Mexico 88220
575-234-5972**

**Permanent Abandonment of Federal Wells
Conditions of Approval (LPC Habitat)**

Failure to comply with the following Conditions of Approval may result in a Notice of Incidents of Noncompliance (INC) in accordance with 43 CFR 3163.1.

1. Plugging operations shall commence within ninety (90) days from the approval date of this Notice of Intent to Abandon.

If you are unable to plug the well by the 90th day provide this office, prior to the 90th day, with the reason for not meeting the deadline and a date when we can expect the well to be plugged. Failure to do so will result in enforcement action.

The rig used for the plugging procedure cannot be released and moved off without the prior approval of the authorized officer. Failure to do so may result in enforcement action.

2. **Notification:** Contact the appropriate BLM office at least 24 hours prior to the commencing of any plugging operations. For wells in Chaves and Roosevelt County, call 575-627-0272; Eddy County, call 575-361-2822; Lea County, call 575-393-3612.

3. **Blowout Preventers:** A blowout preventer (BOP), as appropriate, shall be installed before commencing any plugging operation. The BOP must be installed and maintained as per API and manufacturer recommendations. The minimum BOP requirement is a 2M system for a well not deeper than 9,090 feet; a 3M system for a well not deeper than 13,636 feet; and a 5M system for a well not deeper than 22,727 feet.

4. **Mud Requirement:** Mud shall be placed between all plugs. Minimum consistency of plugging mud shall be obtained by mixing at the rate of 25 sacks (50 pounds each) of gel per 100 barrels of **brine** water. Minimum nine (9) pounds per gallon.

5. **Cement Requirement:** Sufficient cement shall be used to bring any required plug to the specified depth and length. Any given cement volumes on the proposed plugging procedure are merely estimates and are not final. Unless specific approval is received, no plug except the surface plug shall be less than 25 sacks of cement. Any plug that requires a tag will have a minimum WOC time of 4 hours.

In lieu of a cement plug across perforations in a cased hole (not for any other plugs), a bridge plug set within 50 feet to 100 feet above the perforations shall be capped with 25

sacks of cement. If a bailer is used to cap this plug, 35 feet of cement shall be sufficient. **Before pumping or bailing cement on top of CIBP, tag will be required to verify depth. Based on depth, a tag of the cement may be deemed necessary.**

Unless otherwise specified in the approved procedure, the cement plug shall consist of either Neat Class "C", for up to 7,500 feet of depth or Neat Class "H", for deeper than 7,500 feet plugs.

6. Below Ground Level Cap (Lesser Prairie-Chicken Habitat): All casing shall be cut-off at the base of the cellar or 3 feet below final restored ground level (whichever is deeper). **The BLM is to be notified a minimum of 4 hours prior to the wellhead being cut off to verify that cement is to surface in the casing and all annuluses. Wellhead cut off shall commence within ten (10) calendar days of the well being plugged. If the cut off cannot be done by the 10th day, the BLM is to be contacted with justification to receive an extension for completing the cut off.** Upon the plugging and subsequent abandonment of wells that are located in lesser prairie-chicken habitat, the casings shall be cut-off at the base of the cellar or 3 feet below final restored ground level (whichever is deeper). The well bore shall then be covered with a metal plate at least ¼ inch thick and welded in place. A weep hole shall be left in the plate and/or casing.

NMOCD also requires the operator to notify NMOCD when this type of dry hole marker is used. This can be done on the subsequent report of abandonment which is submitted to the BLM after the well is plugged. State that a below ground cap was installed as required in the COA's from the BLM.

7. Subsequent Plugging Reporting: Within 30 days after plugging work is completed, file one original and three copies of the Subsequent Report of Abandonment, Form 3160-5 to BLM. The report should give in detail the manner in which the plugging work was carried out, the extent (by depths) of cement plugs placed, and the size and location (by depths) of casing left in the well. **Show date well was plugged.**

8. Trash: All trash, junk and other waste material shall be contained in trash cages or bins to prevent scattering and will be removed and deposited in an approved sanitary landfill. Burial on site is not permitted.

Following the submission and approval of the Subsequent Report of Abandonment, surface restoration will be required. See attached reclamation objectives.

9.. Timing Limitation Stipulation/ Condition of Approval for Lesser Prairie-Chicken: From March 1st through June 15th annually, abandonment activities will be allowed except between the hours from 3:00 am and 9:00 am. Normal vehicle use on existing roads will not be restricted



United States Department of the Interior

BUREAU OF LAND MANAGEMENT

Carlsbad Field Office
620 E. Greene St.
Carlsbad, New Mexico 88220-6292
www.blm.gov/nm



In Reply Refer To: 1310

Reclamation Objectives and Procedures

Reclamation Objective: Oil and gas development is one of many uses of the public lands and resources. While development may have a short- or long-term effect on the land, successful reclamation can ensure the effect is not permanent. During the life of the development, all disturbed areas not needed for active support of production operations should undergo "interim" reclamation in order to minimize the environmental impacts of development on other resources and uses. At final abandonment, well locations, production facilities, and access roads must undergo "final" reclamation so that the character and productivity of the land and water are restored.

The long-term objective of final reclamation is to set the course for eventual ecosystem restoration, including the restoration of the natural vegetation community, hydrology, and wildlife habitats. In most cases this means returning the land to a condition approximating or equal to that which existed prior to the disturbance. The final goal of reclamation is to restore the character of the land and water to its pre-disturbance condition. The operator is generally not responsible for achieving full ecological restoration of the site. Instead, the operator must achieve the short-term stability, visual, hydrological, and productivity objectives of the surface management agency and take steps necessary to ensure that long-term objectives will be reached through natural processes.

To achieve these objectives, remove any and all contaminants, scrap/trash, equipment, pipelines and powerlines. Strip and remove caliche, contour the location to blend with the surrounding landscape, re-distribute the native soils, provide erosion control as needed, rip and seed as specified in the original APD COA. This will apply to well pads, facilities, and access roads. Barricade access road at the starting point. If reserve pits have not reclaimed due to salts or other contaminants, submit a plan for approval, as to how you propose to provide adequate restoration of the pit area.

1. The Application for Permit to Drill or Reenter (APD, Form 3160-3), Surface Use Plan of Operations must include adequate measures for stabilization and reclamation of disturbed lands. Oil and Gas operators must plan for reclamation, both interim and final, up front in the APD process as per Onshore Oil and Gas Order No. 1.
2. For wells and/or access roads not having an approved plan, or an inadequate plan for surface reclamation (either interim or final reclamation), the operator must submit a proposal describing the procedures for reclamation. For interim reclamation, the appropriate time for submittal would be when filing the Well Completion or Recompletion Report and Log (Form 3160-4). For final reclamation, the appropriate time for submittal would be when filing the Notice of Intent, or the Subsequent Report of Abandonment, Sundry Notices and Reports on Wells (Form 3160-5). Interim reclamation is to be completed within 6 months of well completion, and final reclamation is to be completed within 6 months of well abandonment.
3. The operator must file a Subsequent Report Plug and Abandonment (Form 3160-5) following the plugging of a well.

4. Previous instruction had you waiting for a BLM specialist to inspect the location and provide you with reclamation requirements. If you have an approved Surface Use Plan of Operation and/or an approved Sundry Notice, you are free to proceed with reclamation as per approved APD. If you have issues or concerns, contact a BLM specialist to assist you. It would be in your interest to have a BLM specialist look at the location and access road prior to the removal of reclamation equipment to ensure that it meets BLM objectives. Upon conclusion submit a Form 3160-5, Subsequent Report of Reclamation. This will prompt a specialist to inspect the location to verify work was completed as per approved plans.
5. The approved Subsequent Report of Reclamation will be your notice that the native soils, contour and seedbed have been reestablished. If the BLM objectives have not been met the operator will be notified and corrective actions may be required.
6. It is the responsibility of the operator to monitor these locations and/or access roads until such time as the operator feels that the BLM objective has been met. If after two growing seasons the location and/or access roads are not showing the potential for successful revegetation, additional actions may be needed. When you feel the BLM objectives have been met submit a Final Abandonment Notice (FAN), Form 3160-5, stating that all reclamation requirements have been achieved and the location and/or access road is ready for a final abandonment inspection.
7. At this time the BLM specialist will inspect the location and/or access road. If the native soils and contour have been restored, and the revegetation is successful, the FAN will be approved, releasing the operator of any further liability of the location and/or access road. If the location and/or access road have not achieved the objective, you will be notified as to additional work needed or additional time being needed to achieve the objective.

If there are any questions, please feel free to contact any of the following specialists:

Jim Amos
Supervisory Petroleum Engineering Tech
575-234-5909, 575-361-2648 (Cell)

Arthur Arias
Environmental Protection Specialist
575-234-6230

Linda Denniston
Environmental Protection Specialist
575-234-5974

Henryetta Price
Environmental Protection Specialist
575-234-5951

Dara Glass
Environmental Protection Specialist
575-234-5924

Shelly Tucker
Environmental Protection Specialist
575-234-5979