

District I
1625 N. French Dr., Hobbs, NM 88240
Phone: (575) 393-6161 Fax: (575) 393-6170
District II
811 S. First St., Artesia, NM 88210
Phone: (575) 748-1283 Fax: (575) 748-1720
District III
1000 Rio Brazos Road, Aztec, NM 87410
Phone: (505) 334-6178 Fax: (505) 334-6170
District IV
1220 S. St. Francis Dr., Santa Fe, NM 87505
Phone: (505) 476-3460 Fax: (505) 476-3462

State of New Mexico
Energy, Minerals & Natural Resources Department
OIL CONSERVATION DIVISION
1220 South St. Francis Dr.
Santa Fe, NM 87505

Form C-102
Revised August 1, 2011
Submit one copy to appropriate
District Office
☐ AMENDED REPORT

WELL LOCATION AND ACREAGE DEDICATION PLAT

¹ API Number 30-025-42894	² Pool Code 49490	³ Pool Name Paduca; Delaware, North
⁴ Property Code 314752	⁵ Property Name REBEL 20 FED	⁶ Well Number 3H
⁷ OGRID No. 6137	⁸ Operator Name DEVON ENERGY PRODUCTION COMPANY, L.P.	⁹ Elevation 3557.5

¹⁰ Surface Location

UL or lot no.	Section	Township	Range	Lot Idn	Feet from the	North/South line	Feet from the	East/West line	County
B	20	24 S	32 E		250	NORTH	1930	EAST	LEA

¹¹ Bottom Hole Location If Different From Surface

UL or lot no.	Section	Township	Range	Lot Idn	Feet from the	North/South line	Feet from the	East/West line	County
O	20	24 S	32 E		330	SOUTH	1980	EAST	LEA

¹² Dedicated Acres	¹³ Joint or Infill	¹⁴ Consolidation Code	¹⁵ Order No.
160.00			

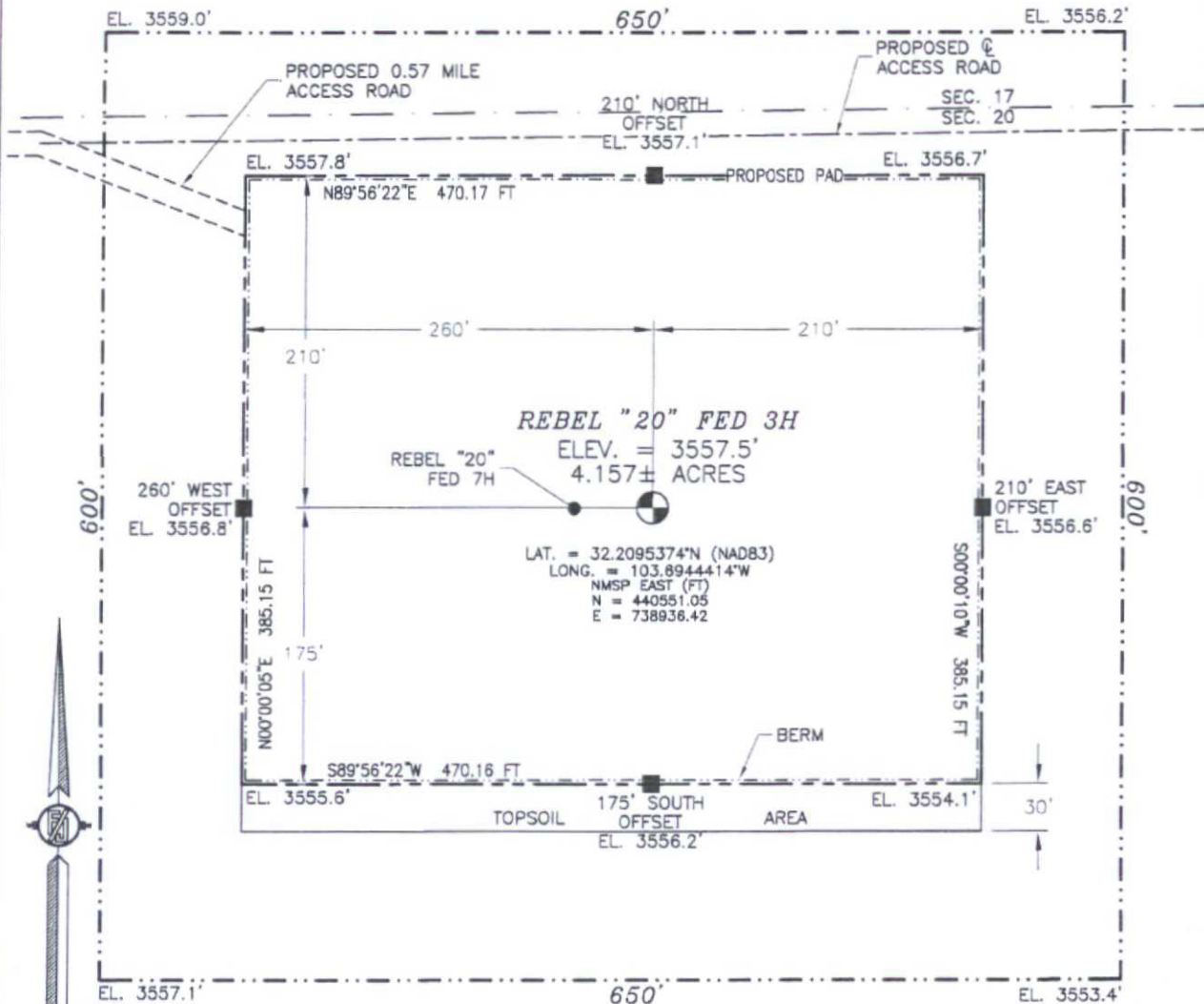
No allowable will be assigned to this completion until all interests have been consolidated or a non-standard unit has been approved by the division.

<p>N89°19'12"E 2643.68 FT</p> <p>NW CORNER SEC. 20 LAT. = 32.2101731°N LONG. = 103.7052886°W NMSP EAST (FT) N = 440762.51 E = 735580.15</p> <p>N 89°25'24"E 2641.68 FT</p> <p>NE CORNER SEC. 20 LAT. = 32.2102463°N LONG. = 103.6882040°W NMSP EAST (FT) N = 440820.46 E = 740864.04</p> <p>250'</p> <p>SURFACE LOCATION</p> <p>REBEL 20 FED 3H ELEV. = 3557.5' LAT. = 32.2095374°N (NAD83) LONG. = 103.6944414°W NMSP EAST (FT) N = 440551.05 E = 738936.42</p> <p>DNF NOTE: LATITUDE AND LONGITUDE COORDINATES ARE SHOWN USING THE NORTH AMERICAN DATUM OF 1983 (NAD83). LISTED NEW MEXICO STATE PLANE EAST COORDINATES ARE GRID (NAD83). BASIS OF BEARING AND DISTANCES USED ARE NEW MEXICO STATE PLANE EAST COORDINATES MODIFIED TO THE SURFACE.</p> <p>BOTTOM OF HOLE LAT. = 32.1956072°N LONG. = 103.6945777°W NMSP EAST (FT) N = 435846.92 E = 738922.22</p> <p>500'26'22"E 2637.01 FT</p> <p>500'25'54"E 2644.68 FT</p> <p>SE CORNER SEC. 20 LAT. = 32.1957312°N LONG. = 103.6881767°W NMSP EAST (FT) N = 435540.07 E = 740904.17</p> <p>1980'</p> <p>SW CORNER SEC. 20 LAT. = 32.1956460°N LONG. = 103.7052343°W NMSP EAST (FT) N = 435477.84 E = 735627.83</p> <p>S 89°18'59"W 2634.08 FT</p> <p>S 89°19'55"W 2643.77 FT</p>		<p>" OPERATOR CERTIFICATION</p> <p>I hereby certify that the information contained herein is true and complete to the best of my knowledge and belief, and that this organization either owns a working interest or undivided mineral interest in the land including the proposed bottom hole location or has a right to drill this well at this location pursuant to a contract with an owner of such a mineral or working interest, or to a voluntary pooling agreement or a compulsory pooling order heretofore entered by the division.</p> <p><i>Linda Good</i> 6/8/2015 Signature Date</p> <p>Linda Good Printed Name</p> <p>linda.good@dvn.com E-mail Address</p> <p>" SURVEYOR CERTIFICATION</p> <p>I hereby certify that the well location shown on this plat was plotted from field notes of actual surveys made by me or under my supervision, and that the same is true and correct to the best of my belief.</p> <p>APRIL 21 2015 Date of Survey</p> <p><i>[Signature]</i> Signature and Seal of Professional Surveyor</p> <p>Certificate Number: FILIMON P. JARAMILLO, PLS 12797</p> <p>SURVEY NO. 3832</p>
--	--	---

JAN 04 2016

SECTION 20, TOWNSHIP 24 SOUTH, RANGE 32 EAST, N.M.P.M.
LEA COUNTY, STATE OF NEW MEXICO
SITE MAP

NOTE: LATITUDE AND LONGITUDE COORDINATES ARE SHOWN USING THE NORTH AMERICAN DATUM OF 1983 (NAD83). LISTED NEW MEXICO STATE PLANE EAST COORDINATES ARE GRID (NAD83). BASIS OF BEARING AND DISTANCES USED ARE NEW MEXICO STATE PLANE EAST COORDINATES MODIFIED TO THE SURFACE



0 10 50 100 200

SCALE 1" = 100'

DIRECTIONS TO LOCATION

FROM THE INTERSECTION OF STATE HIGHWAY 128 AND BUCK JACKSON ROAD GO SOUTHWEST ON BUCK JACKSON ROAD 0.43 MILE TO CALICHE LEASE ROAD, WEST OF CALICHE PIT ON LEFT, GO SOUTH ON CALICHE LEASE ROAD 1.45 MILES TO EXISTING 2-TRACK ROAD ON LEFT. GO EAST ON 2-TRACK ROAD ALONG THE SOUTH SIDE OF THE NORTH LINE OF SECTION 19, 1.0 MILE TO THE NORTHEAST CORNER OF SECTION 19, FOLLOW PROPOSED FLAGGED ROAD LINE ALONG THE SOUTH SIDE OF THE NORTH LINE OF SECTION 20, GO EAST 0.57 MILE TO NORTHWEST CORNER OF PAD.

DEVON ENERGY PRODUCTION COMPANY, L.P.

REBEL "20" FED 3H

LOCATED 250 FT. FROM THE NORTH LINE
AND 1930 FT. FROM THE EAST LINE OF
SECTION 20, TOWNSHIP 24 SOUTH,
RANGE 32 EAST, N.M.P.M.

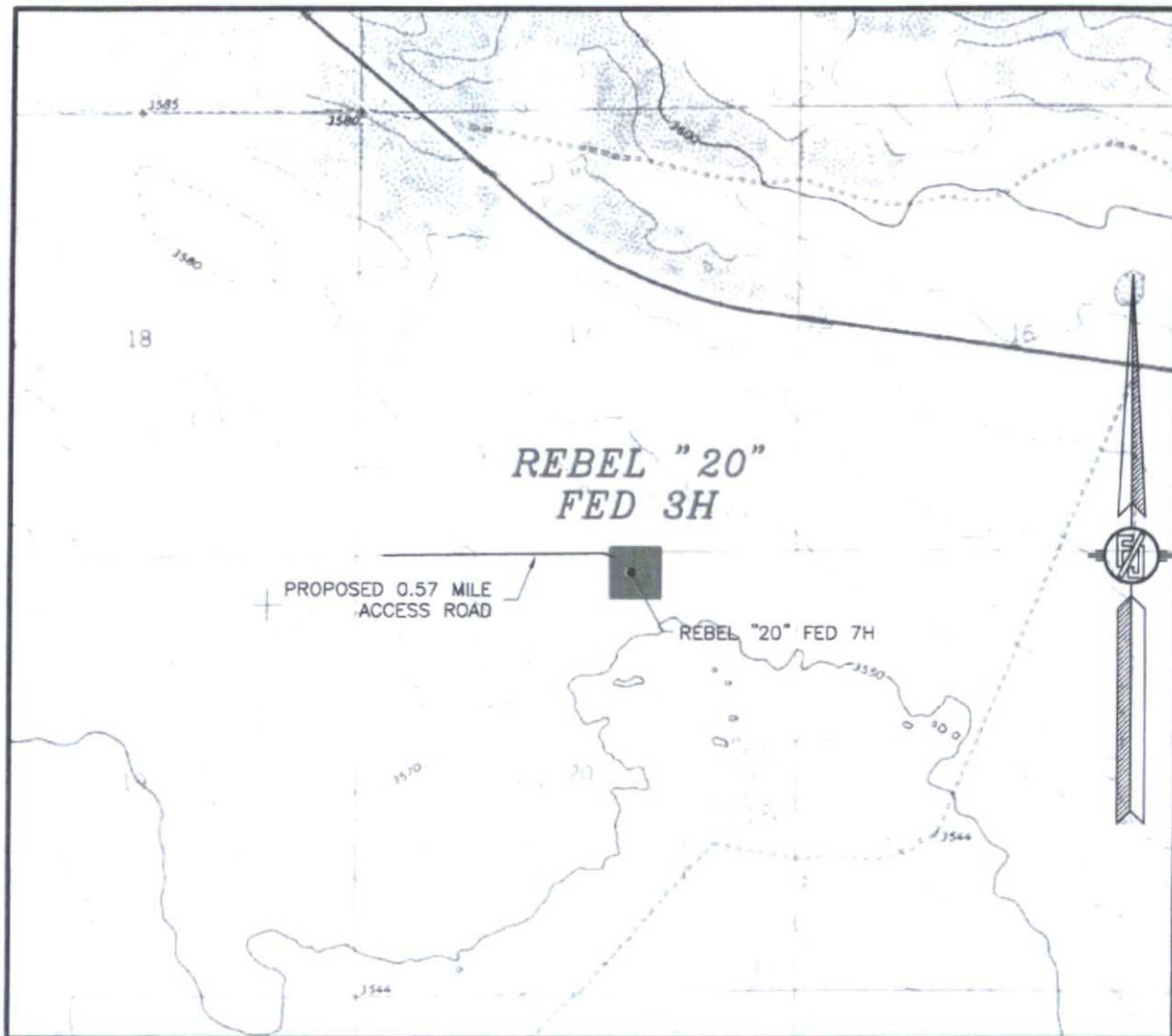
LEA COUNTY, STATE OF NEW MEXICO

APRIL 21, 2015

SURVEY NO. 3832

MADRON SURVEYING, INC. 301 SOUTH CANAL (575) 234-3341 CARLSBAD, NEW MEXICO

SECTION 20, TOWNSHIP 24 SOUTH, RANGE 32 EAST, N.M.P.M.
LEA COUNTY, STATE OF NEW MEXICO
LOCATION VERIFICATION MAP



USGS QUAD MAP:
PADUCA BREAKS NW

NOT TO SCALE

DEVON ENERGY PRODUCTION COMPANY, L.P.

REBEL "20" FED 3H

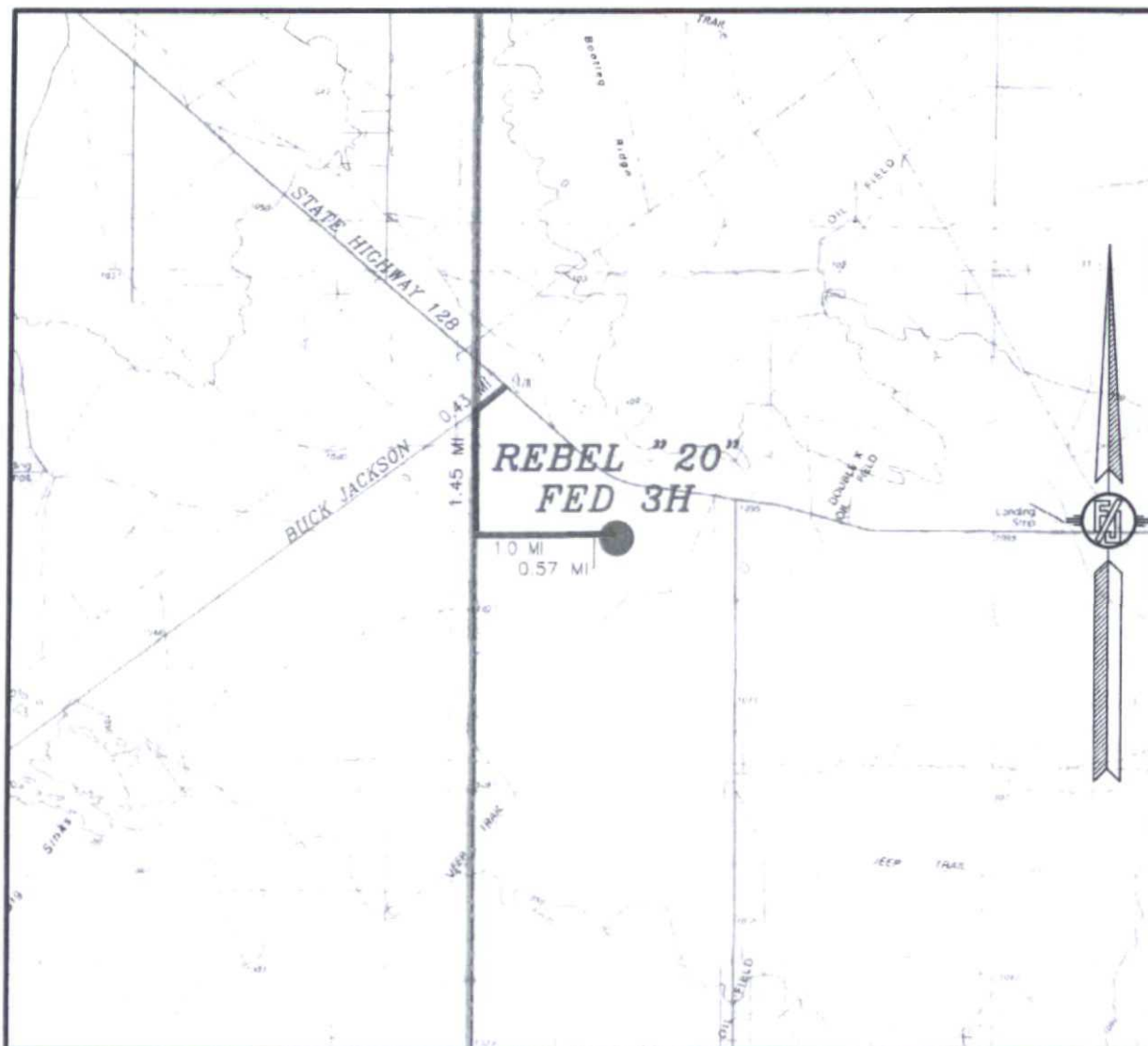
LOCATED 250 FT. FROM THE NORTH LINE
AND 1930 FT. FROM THE EAST LINE OF
SECTION 20, TOWNSHIP 24 SOUTH,
RANGE 32 EAST, N.M.P.M.
LEA COUNTY, STATE OF NEW MEXICO

APRIL 21, 2015

SURVEY NO. 3832

MADRON SURVEYING, INC. 301 SOUTH CANAL (575) 234-3341 CARLSBAD, NEW MEXICO

SECTION 20, TOWNSHIP 24 SOUTH, RANGE 32 EAST, N.M.P.M.
LEA COUNTY, STATE OF NEW MEXICO
VICINITY MAP



DISTANCES IN MILES

NOT TO SCALE

DEVON ENERGY PRODUCTION COMPANY, L.P.

REBEL "20" FED 3H

LOCATED 250 FT. FROM THE NORTH LINE

AND 1930 FT. FROM THE EAST LINE OF

SECTION 20, TOWNSHIP 24 SOUTH,

RANGE 32 EAST, N.M.P.M.

LEA COUNTY, STATE OF NEW MEXICO

DIRECTIONS TO LOCATION

FROM THE INTERSECTION OF STATE HIGHWAY 128 AND BUCK JACKSON ROAD GO SOUTHWEST ON BUCK JACKSON ROAD 0.43 MILE TO CALICHE LEASE ROAD, WEST OF CALICHE PIT ON LEFT, GO SOUTH ON CALICHE LEASE ROAD 1.45 MILES TO EXISTING 2-TRACK ROAD ON LEFT, GO EAST ON 2-TRACK ROAD ALONG THE SOUTH SIDE OF THE NORTH LINE OF SECTION 19, 1.0 MILE TO THE NORTHEAST CORNER OF SECTION 19, FOLLOW PROPOSED FLAGGED ROAD LINE ALONG THE SOUTH SIDE OF THE NORTH LINE OF SECTION 20, GO EAST 0.57 MILE TO NORTHWEST CORNER OF PAD.

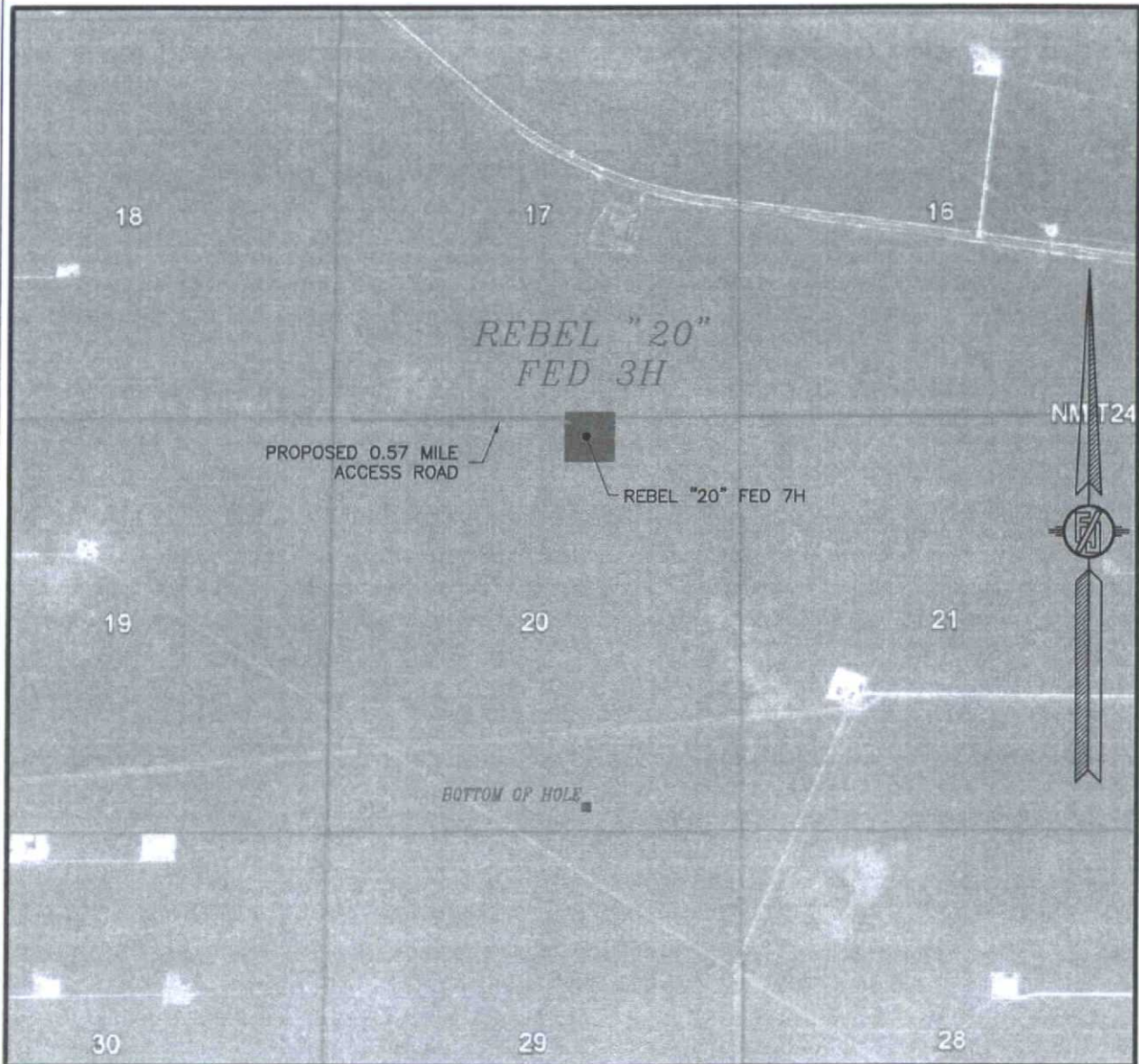
APRIL 21, 2015

SURVEY NO. 3832

MADRON SURVEYING, INC. 101 SOUTH CANAL (575) 234-3341

CARLSBAD, NEW MEXICO

SECTION 20, TOWNSHIP 24 SOUTH, RANGE 32 EAST, N.M.P.M.
LEA COUNTY, STATE OF NEW MEXICO
AERIAL PHOTO



NOT TO SCALE
AERIAL PHOTO:
GOOGLE EARTH
FEBRUARY 2014

DEVON ENERGY PRODUCTION COMPANY, L.P.

REBEL "20" FED 3H

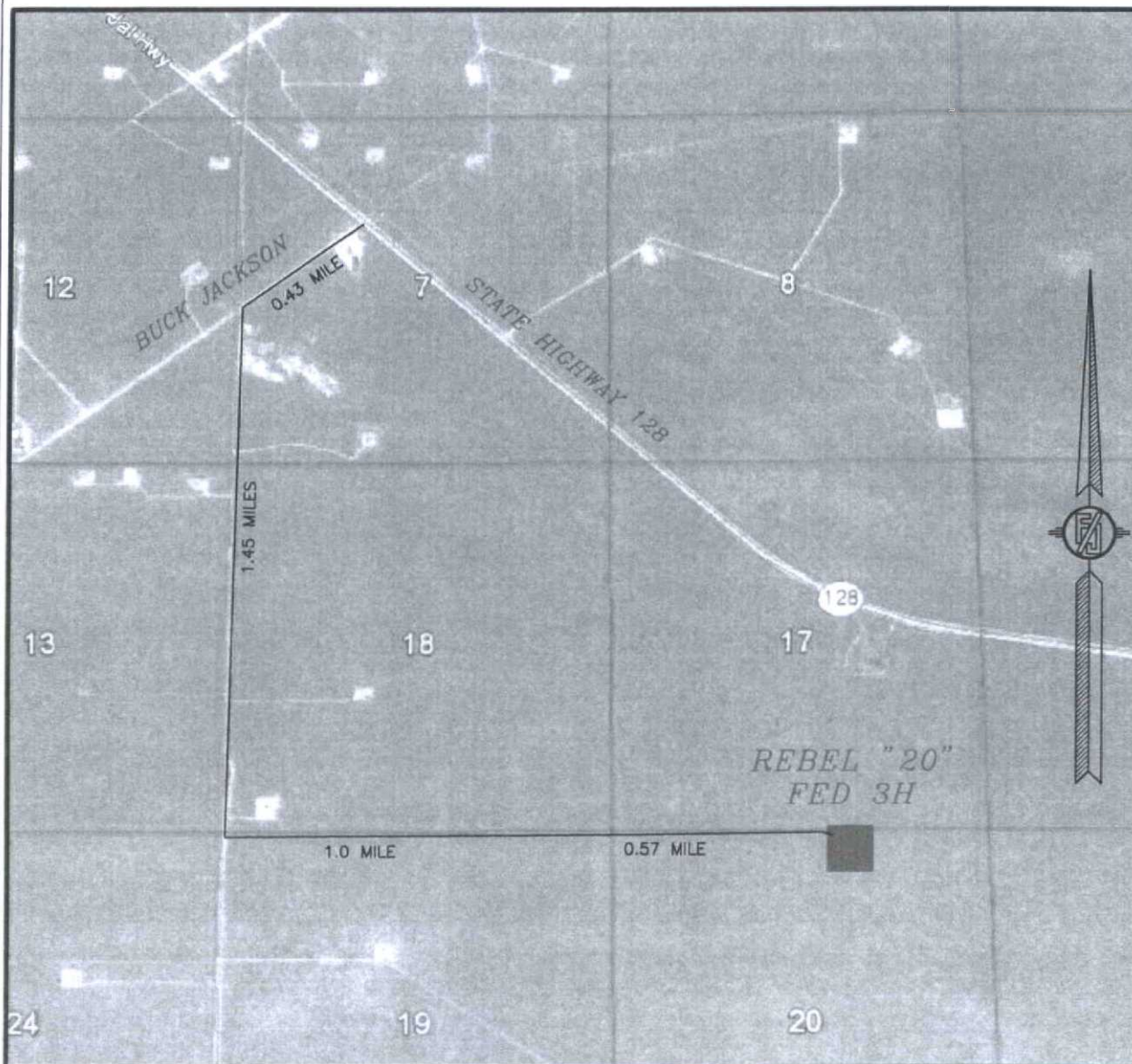
LOCATED 250 FT. FROM THE NORTH LINE
AND 1930 FT. FROM THE EAST LINE OF
SECTION 20, TOWNSHIP 24 SOUTH,
RANGE 32 EAST, N.M.P.M.
LEA COUNTY, STATE OF NEW MEXICO

APRIL 21, 2015

SURVEY NO. 3832

MADRON SURVEYING, INC. 301 SOUTH CANAL (575) 234-3341 CARLSBAD, NEW MEXICO

SECTION 20, TOWNSHIP 24 SOUTH, RANGE 32 EAST, N.M.P.M.
LEA COUNTY, STATE OF NEW MEXICO
ACCESS AERIAL ROUTE MAP



NOT TO SCALE
AERIAL PHOTO:
GOOGLE EARTH
FEBRUARY 2014

DEVON ENERGY PRODUCTION COMPANY, L.P.

REBEL "20" FED 3H

LOCATED 250 FT. FROM THE NORTH LINE
AND 1930 FT. FROM THE EAST LINE OF
SECTION 20, TOWNSHIP 24 SOUTH,
RANGE 32 EAST, N.M.P.M.
LEA COUNTY, STATE OF NEW MEXICO

APRIL 21, 2015

SURVEY NO. 3832

MADRON SURVEYING, INC. 301 SOUTH CANAL (575) 234-3341 CARLSBAD, NEW MEXICO

One Mile Radius Map

Estimated distances to nearest wellbores:

*From SHL: Azores Federal 2H 5300 ft S
Corvo Federal 2H 700 ft SW
*From BHL: Azores Federal 2H 600 ft S



24S 32E

18

17

16

19

20

21

KING TUT FEDERAL
4H

WINDWARD FEDERAL
4H

REBEL 20 FEDERAL 3H

SHL

1 MILE

BHL

1 MILE

devon

Rebel 20 Fed 3H

1 Mile Radius Map

0 1,956
FEET

WELL SYMBOLS
DRY AND ABANDONED WELL
OIL PRODUCING WELL
PROPOSED

May 14, 2015

30

29

28

PAYNE

CORVO FEDERAL
3H

CORVO FEDERAL
4H

AZORES FEDERAL
4H

AZORES FEDERAL
3H

CORVO FEDERAL
2H

AZORES FEDERAL
2H

BOMBAY 200 FEDERAL COM
1H