

2 Well Pad

The diagram illustrates the site layout for a wellhead location, showing the arrangement of various equipment and housing units. The layout is oriented with North (N) at the top, indicated by a compass rose. The overall dimensions of the site are 385 ft by 470 ft, with a scale of 1 inch = 50 ft.

Equipment and Structures:

- Top Left:** Frac Tank & Water Storage.
- Top Center:** Mud Storage.
- Top Right:** Diesel Tank, three Generators, VFD House, Parts House, Mud Pump, Mud Pump, Mud Pump, Volume Tanks, Process Tanks, Shakers, Closed Loop Equip, Mud Logger.
- Center:** Rig Floor, Draw works, Spool, BOP Skid, HPU/Accumulator, Parts Cabin, Driller's Cabin, Parts House, Choke, T T, Water Tank, Pipe Racks (multiple locations), Pipe Racks (multiple locations).
- Bottom Left:** Mud Storage.
- Bottom Center:** 260' dimension line.
- Bottom Right:** Directional Housing, Co Man Housing, Potable Water, Pusher Housing, Change House, Crew Housing.

Dimensions:

- Overall dimensions: 385 ft x 470 ft.
- Scale: 1 inch = 50 ft.
- Wellhead Location: 260'.
- Other dimensions: 175', 210', 210'.



**Devon Energy Center
333 West Sheridan Avenue
Oklahoma City, Oklahoma 73102-5015**

Hydrogen Sulfide (H₂S) Contingency Plan

For

Rebel 20 Fed 3H

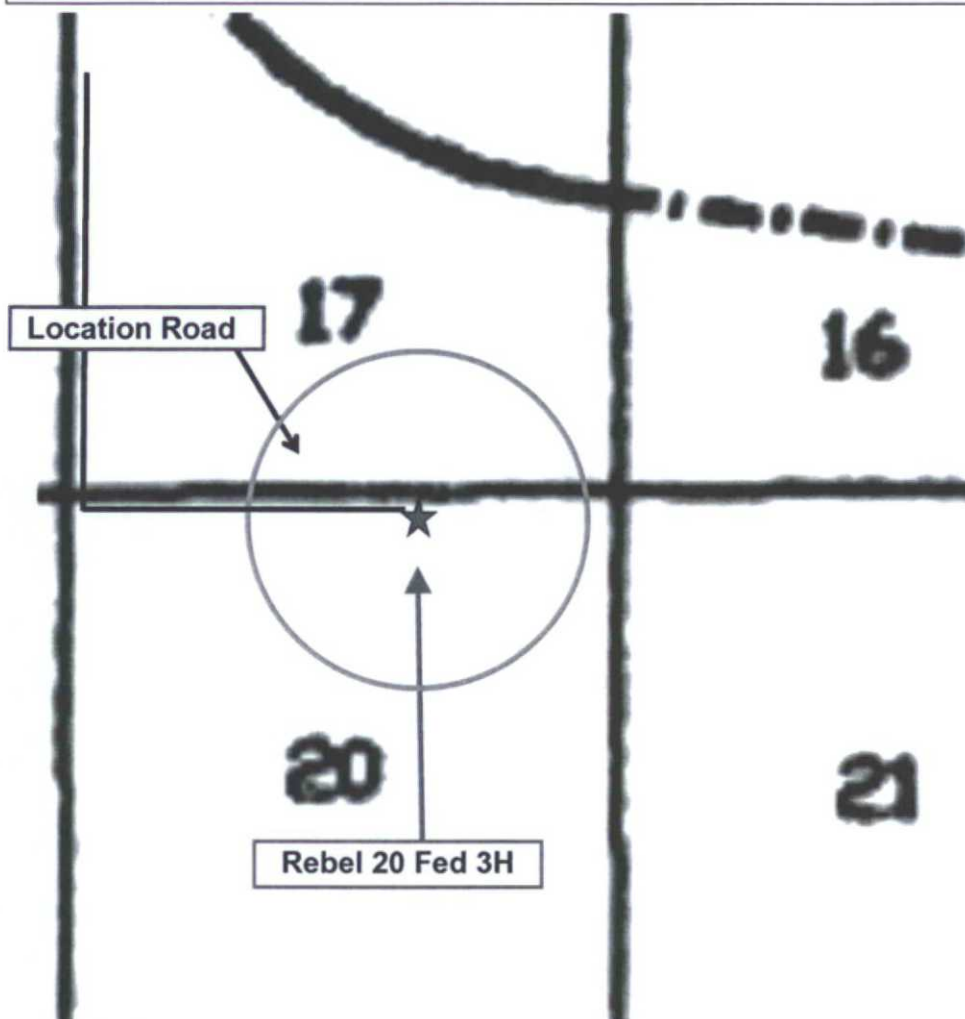
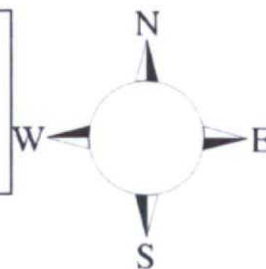
**Sec-20 T-24S R-32E
250' FNL & 1930' FEL
LAT. = 32.2095374' N (NAD83)
LONG = 103.6944414' W**

Lea County NM

JAN 04 2016

Rebel 20 Fed 3H

This is an open drilling site. H₂S monitoring equipment and emergency response equipment will be used within 500' of zones known to contain H₂S, including warning signs, wind indicators and H₂S monitor.



Assumed 100 ppm 3000' ()
100 ppm H₂S concentration shall trigger activation of this plan.

Escape

Crews shall escape upwind of escaping gas in the event of an emergency release of gas. Escape can be facilitated from the location entrance road. Crews should then block the entrance to the location from the lease road so as not to allow anyone traversing into a hazardous area. The blockade should be at a safe distance outside of the ROE. There are no homes or buildings in or near the ROE.

Assumed 100 ppm ROE = 3000'

100 ppm H₂S concentration shall trigger activation of this plan.

Emergency Procedures

In the event of a release of gas containing H₂S, the first responder(s) must

- Isolate the area and prevent entry by other persons into the 100 ppm ROE.
- Evacuate any public places encompassed by the 100 ppm ROE.
- Be equipped with H₂S monitors and air packs in order to control the release.
- Use the "buddy system" to ensure no injuries occur during the response
- Take precautions to avoid personal injury during this operation.
- Contact operator and/or local officials to aid in operation. See list of phone numbers attached.
- Have received training in the
 - Detection of H₂S, and
 - Measures for protection against the gas,
 - Equipment used for protection and emergency response.

Ignition of Gas Source

Should control of the well be considered lost and ignition considered, take care to protect against exposure to Sulfur Dioxide (SO₂). Intentional ignition must be coordinated with the NMOCD and local officials. Additionally the NM State Police may become involved. NM State Police shall be the Incident Command on scene of any major release. Take care to protect downwind whenever there is an ignition of the gas

Characteristics of H₂S and SO₂

Common Name	Chemical Formula	Specific Gravity	Threshold Limit	Hazardous Limit	Lethal Concentration
Hydrogen Sulfide	H ₂ S	1.189 Air = 1	10 ppm	100 ppm/hr	600 ppm
Sulfur Dioxide	SO ₂	2.21 Air = 1	2 ppm	N/A	1000 ppm

Contacting Authorities

Devon Energy Corp. personnel must liaison with local and state agencies to ensure a proper response to a major release. Additionally, the OCD must be notified of the release as soon as possible but no later than 4 hours. Agencies will ask for information such as type and volume of release, wind direction, location of release, etc. Be prepared with all information available. The following call list of essential and potential responders has been prepared for use during a release. Devon Energy Corp. Company response must be in coordination with

Hydrogen Sulfide Drilling Operation Plan

I. HYDROGEN SULFIDE (H₂S) TRAINING

All personnel, whether regularly assigned, contracted, or employed on an unscheduled basis, will receive training from a qualified instructor in the following areas prior to commencing drilling operations on this well:

1. The hazards and characteristics of hydrogen sulfide (H₂S)
2. The proper use and maintenance of personal protective equipment and life support systems.
3. The proper use of H₂S detectors, alarms, warning systems, briefing areas, evacuation procedures, and prevailing winds.
4. The proper techniques for first aid and rescue procedures.

In addition, supervisory personnel will be trained in the following areas:

1. The effects of H₂S metal components. If high tensile tubulars are to be used, personnel will be trained in their special maintenance requirements.
2. Corrective action and shut-in procedures when drilling or reworking a well and blowout prevention and well control procedures.
3. The contents and requirements of the H₂S Drilling Operations Plan and Public Protection Plan.

There will be an initial training session just prior to encountering a known or probable H₂S zone (within 3 days or 500 feet) and weekly H₂S and well control drills for all personnel in each crew. The initial training session shall include a review of the site specific H₂S Drilling Operations Plan and the Public Protection Plan.

II. HYDROGEN SULFIDE TRAINING

Note: All H₂S safety equipment and systems will be installed, tested, and operational when drilling reaches a depth of 500 feet above, or three days prior to penetrating the first zone containing or reasonably expected to contain H₂S.

1. Well Control Equipment

- A. Flare line
- B. Choke manifold – Remotely Operated
- C. Blind rams and pipe rams to accommodate all pipe sizes with properly sized closing unit
- D. Auxiliary equipment may include if applicable: annular preventer and rotating head.
- E. Mud/Gas Separator

2. Protective equipment for essential personnel:

30-minute SCBA units located at briefing areas, as indicated on well site diagram, with escape units available in the top doghouse. As it may be difficult to communicate audibly while wearing these units, hand signals shall be utilized.

3. H₂S detection and monitoring equipment:

Portable H₂S monitors positioned on location for best coverage and response. These units have warning lights which activate when H₂S levels reach 10 ppm and audible sirens which activate at 15 ppm. Sensor locations:

- Bell nipple
- Shale shaker
- Trip tank
- Suction pit
- Rig floor
- Cellar
- Choke manifold
- Living Quarters (usually the company man's trailer stairs.)

Visual warning systems:

- A. Wind direction indicators as shown on well site diagram
- B. Caution/ Danger signs shall be posted on roads providing direct access to locations. Signs will be painted a high visibility yellow with black lettering of sufficient size to be reasonable distance from the immediate location. Bilingual signs will be used when appropriate.

4. Mud program:

The mud program has been designed to minimize the volume of H₂S circulated to surface. Proper mud weight, safe drilling practices and the use of H₂S scavengers will minimize hazards when penetrating H₂S bearing zones.

5. Metallurgy:

- A. All drill strings, casings, tubing, wellhead, blowout preventer, drilling spool, kill lines, choke manifold lines, and valves shall be H₂S trim.
- B. All elastomers used for packing and seals shall be H₂S trim.

6. Communication:

- A. Company personnel have/use cellular telephones in the field.
- B. Land line (telephone) communications at Office

7. Well testing:

- A. Drill stem testing will be performed with a minimum number of personnel in the immediate vicinity, which are necessary to safety and adequately conduct the test. The drill stem testing will be conducted during daylight hours and formation fluids will not be flowed to the surface. All drill-stem-testing operations conducted in an H₂S environment will use the closed chamber method of testing.
- B. There will be no drill stem testing.

Devon Energy Corp. Company Call List

Carlsbad (575)

Cellular

Drilling Supervisor – Basin – Mark Kramer.....	405-823-4796
Drilling Supervisor – Slope – Norman Naill.....	405-760-7234
EHS Professional – Mark Hurst.....	575-513-9087

Agency Call List

Lea County (575)

Hobbs

Lea County Communication Authority	393-3981
State Police	392-5588
City Police	397-9265
Sheriff's Office	393-2515
Ambulance	911
Fire Department.....	397-9308
LEPC (Local Emergency Planning Committee).....	393-2870
NMOCD	393-6161
US Bureau of Land Management.....	393-3612

Eddy County (575)

Carlsbad

State Police	885-3137
City Police	885-2111
Sheriff's Office	887-7551
Ambulance	911
Fire Department.....	885-2111
LEPC (Local Emergency Planning Committee).....	887-3798
US Bureau of Land Management.....	887-6544
NM Emergency Response Commission (Santa Fe)	(505) 476-9600
24 HR	(505) 827-9126
National Emergency Response Center (Washington, DC)	(800) 424-8802

Emergency Services

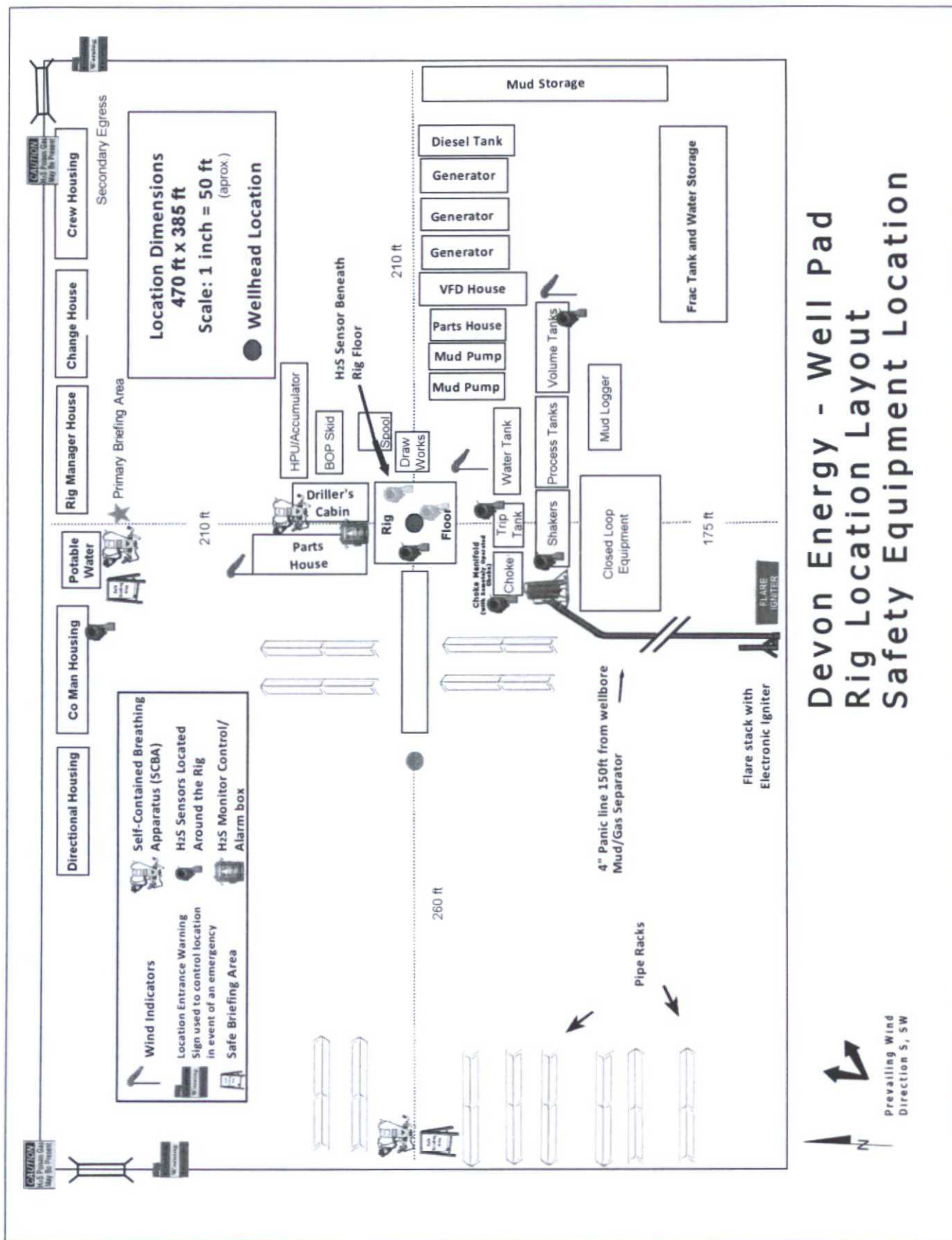
Wild Well Control	(281) 784-4700
Cudd Pressure Control.....	(915) 699-0139 or (915) 563-3356
Halliburton	(575) 746-2757
B. J. Services.....	(575) 746-3569

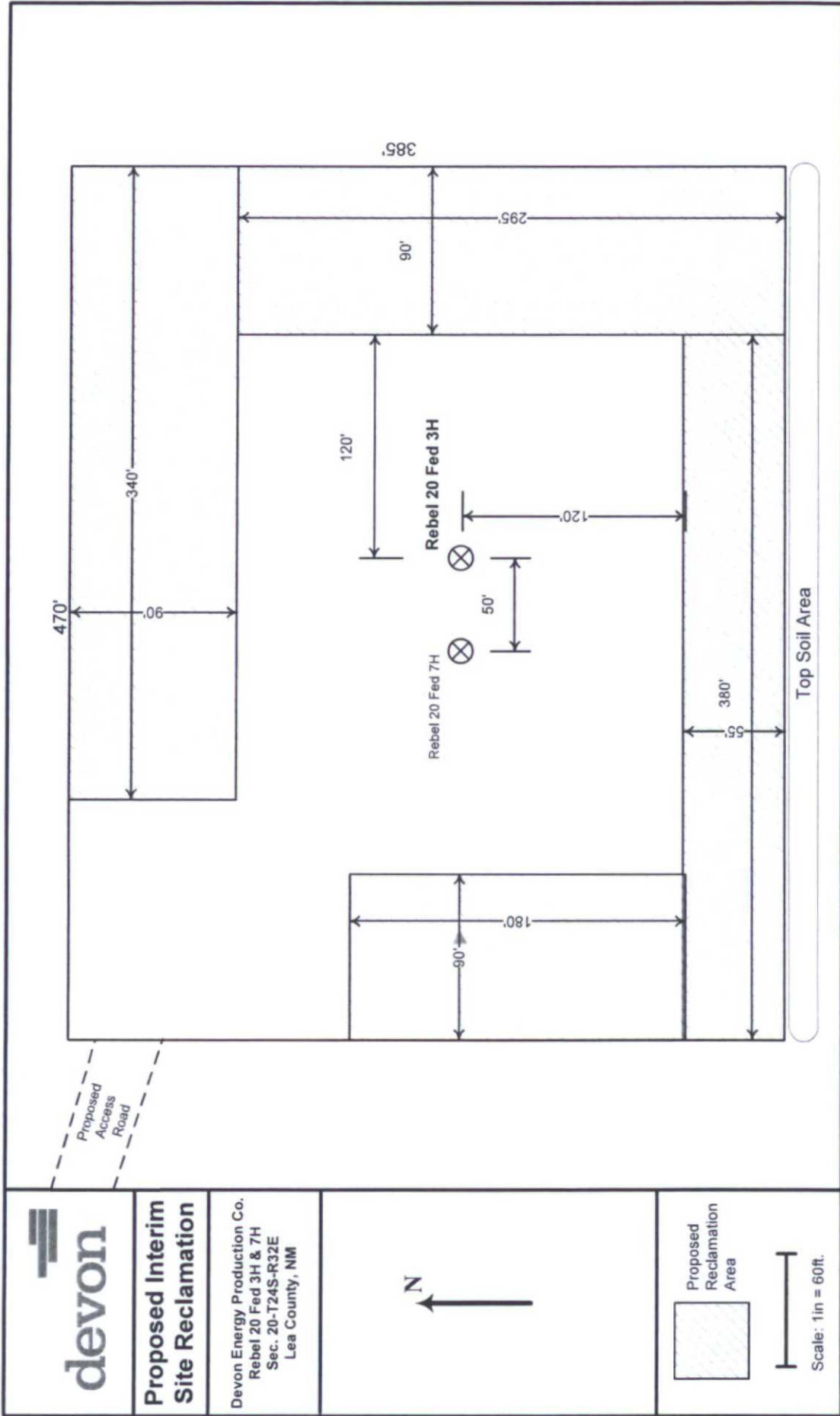
Give GPS position:

Native Air – Emergency Helicopter – Hobbs.....	(575) 392-6429
Flight For Life - Lubbock, TX	(806) 743-9911
Aerocare - Lubbock, TX	(806) 747-8923
Med Flight Air Amb - Albuquerque, NM	(575) 842-4433
Lifeguard Air Med Svc. Albuquerque, NM	(575) 272-3115

Prepared in conjunction with
Dave Small







Proposed Interim Site Reclamation

Devon Energy Production Co.
Rebel 20 Fed 3H & 7H
Sec. 20-T24S-R32E
Lea County, NM



Proposed
Reclamation
Area

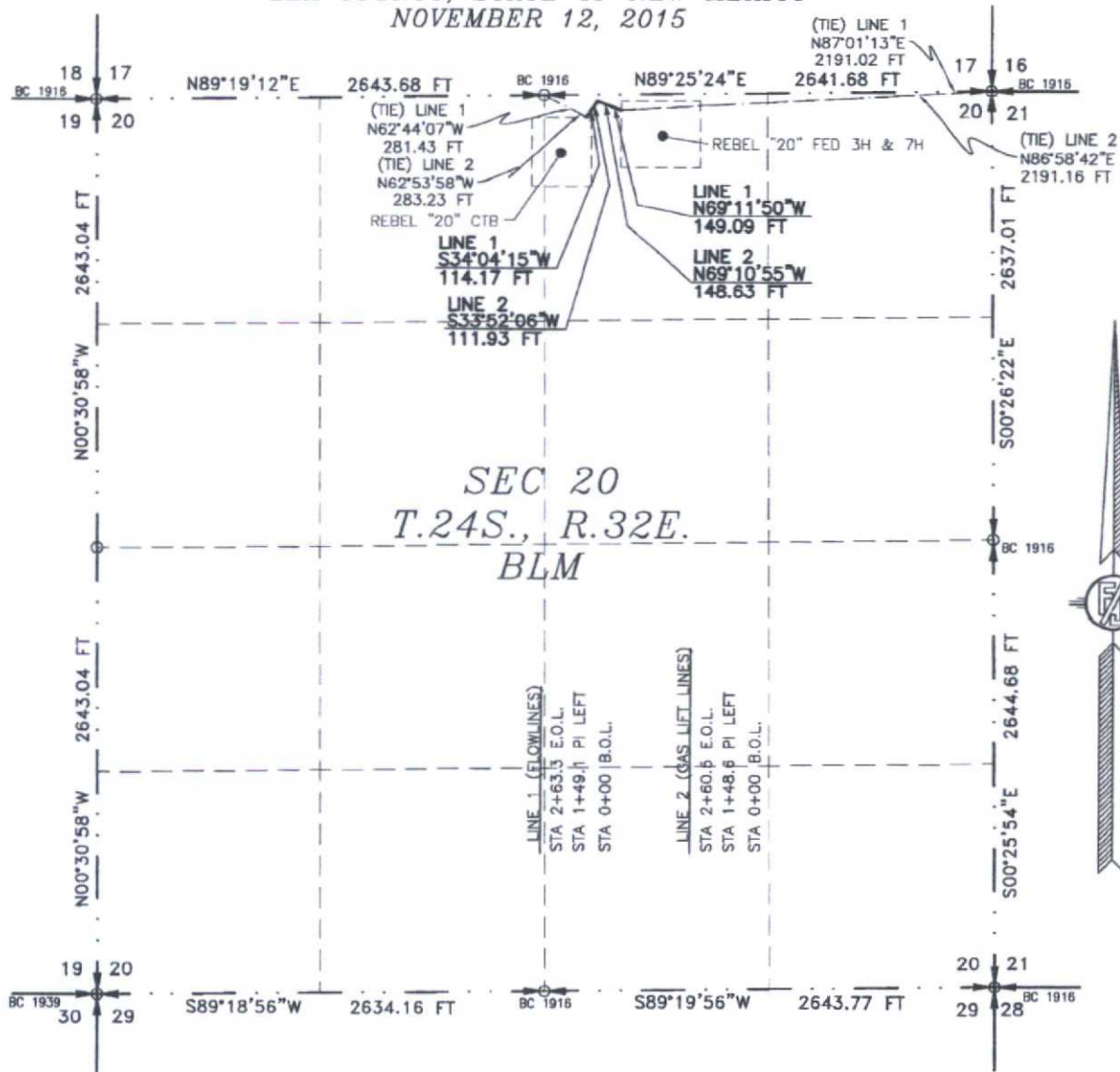


Scale: 1in = 60ft.

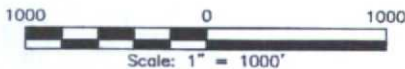
FLOWLINE PLAT (400593XYZ)

TWO 6" BURIED FIBER FLOWLINES AND TWO 6" BURIED FIBER GAS LIFT LINES (IN SAME TRENCH)
FROM THE REBEL "20" FED 3H & 7H TO THE REBEL "20" CTB

DEVON ENERGY PRODUCTION COMPANY, L.P.
CENTERLINE SURVEY OF A PIPELINE CROSSING
SECTION 20, TOWNSHIP 24 SOUTH, RANGE 32 EAST, N.M.P.M.
LEA COUNTY, STATE OF NEW MEXICO
NOVEMBER 12, 2015



SEE NEXT SHEET (2-4) FOR DESCRIPTION



GENERAL NOTES

- 1.) THE INTENT OF THIS ROUTE SURVEY IS TO ACQUIRE AN EASEMENT.
- 2.) BASIS OF BEARING IS NMSP EAST MODIFIED TO SURFACE COORDINATES.

SURVEYOR CERTIFICATE

I, FILIMON F. JARAMILLO, A NEW MEXICO PROFESSIONAL SURVEYOR NO. 12797, HEREBY CERTIFY THAT I HAVE CONDUCTED AND AM RESPONSIBLE FOR THIS SURVEY, THAT THIS SURVEY IS TRUE AND CORRECT TO THE BEST OF MY KNOWLEDGE AND BELIEF, AND THAT THIS SURVEY AND PLAT MEET THE MINIMUM STANDARDS FOR LAND SURVEYING IN THE STATE OF NEW MEXICO.

IN WITNESS WHEREOF, THIS CERTIFICATE IS EXECUTED AT CARLSBAD, NEW MEXICO, THIS 16 DAY OF NOVEMBER 2015

MADRON SURVEYING, INC.
301 SOUTH CANAL
CARLSBAD, NEW MEXICO 88220
Phone (575) 234-3341

FILIMON F. JARAMILLO, 12797

SURVEY NO. 4322

SHEET: 1-4

MADRON SURVEYING, INC. 301 SOUTH CANAL CARLSBAD, NEW MEXICO (575) 234-3341

FLOWLINE PLAT (400593XYZ)

**TWO 6" BURIED FIBER FLOWLINES AND TWO 6" BURIED FIBER GAS LIFT LINES (IN SAME TRENCH)
FROM THE REBEL "20" FED 3H & 7H TO THE REBEL "20" CTB**

**DEVON ENERGY PRODUCTION COMPANY, L.P.
CENTERLINE SURVEY OF A PIPELINE CROSSING
SECTION 20, TOWNSHIP 24 SOUTH, RANGE 32 EAST, N.M.P.M.
LEA COUNTY, STATE OF NEW MEXICO
NOVEMBER 12, 2015**

DESCRIPTION

A STRIP OF LAND 30 FEET WIDE CROSSING BUREAU OF LAND MANAGEMENT LAND IN SECTION 20, TOWNSHIP 24 SOUTH, RANGE 32 EAST, N.M.P.M., LEA COUNTY, STATE OF NEW MEXICO AND BEING 15 FEET EACH SIDE OF THE FOLLOWING DESCRIBED CENTERLINE SURVEY:

LINE 1 TWO 6" BURIED FIBER FLOWLINES

BEGINNING AT A POINT WITHIN THE NW/4 NE/4 OF SAID SECTION 20, TOWNSHIP 24 SOUTH, RANGE 32 EAST, N.M.P.M., WHENCE THE NORTHEAST CORNER OF SAID SECTION 20, TOWNSHIP 24 SOUTH, RANGE 32 EAST, N.M.P.M. BEARS N87°01'13"E, A DISTANCE OF 2191.02 FEET;

THENCE N69°11'50"W A DISTANCE OF 149.09 FEET TO AN ANGLE POINT OF THE LINE HEREIN DESCRIBED;

THENCE S34°04'15"W A DISTANCE OF 114.17 FEET THE TERMINUS OF THIS CENTERLINE SURVEY, WHENCE THE NORTH QUARTER CORNER OF SAID SECTION 20, TOWNSHIP 24 SOUTH, RANGE 32 EAST, N.M.P.M. BEARS N62°44'07"W, A DISTANCE OF 281.43 FEET;

SAID STRIP OF LAND BEING 263.26 FEET OR 15.96 RODS IN LENGTH, CONTAINING 0.181 ACRES MORE OR LESS AND BEING ALLOCATED BY FORTIES AS FOLLOWS:

NW/4 NE/4 263.26 L.F. 15.96 RODS 0.181 ACRES

LINE 2 TWO 6" BURIED FIBER GAS LIFT LINES

BEGINNING AT A POINT WITHIN THE NW/4 NE/4 OF SAID SECTION 20, TOWNSHIP 24 SOUTH, RANGE 32 EAST, N.M.P.M., WHENCE THE NORTHEAST CORNER OF SAID SECTION 20, TOWNSHIP 24 SOUTH, RANGE 32 EAST, N.M.P.M. BEARS N86°58'42"E, A DISTANCE OF 2191.16 FEET;

THENCE N69°10'55"W A DISTANCE OF 148.63 FEET TO AN ANGLE POINT OF THE LINE HEREIN DESCRIBED;

THENCE S33°52'06"W A DISTANCE OF 111.93 FEET THE TERMINUS OF THIS CENTERLINE SURVEY, WHENCE THE NORTH QUARTER CORNER OF SAID SECTION 20, TOWNSHIP 24 SOUTH, RANGE 32 EAST, N.M.P.M. BEARS N62°53'58"W, A DISTANCE OF 283.23 FEET;

SAID STRIP OF LAND BEING 260.56 FEET OR 15.79 RODS IN LENGTH, CONTAINING 0.179 ACRES MORE OR LESS AND BEING ALLOCATED BY FORTIES AS FOLLOWS:

NW/4 NE/4 260.56 L.F. 15.79 RODS 0.179 ACRES

SURVEYOR CERTIFICATE

I, FILIMON F. JARAMILLO, A NEW MEXICO PROFESSIONAL SURVEYOR NO. 12797, HEREBY CERTIFY THAT I HAVE CONDUCTED AND AM RESPONSIBLE FOR THIS SURVEY, THAT THIS SURVEY IS TRUE AND CORRECT TO THE BEST OF MY KNOWLEDGE AND BELIEF, AND THAT THIS SURVEY AND PLAT MEET THE MINIMUM STANDARDS FOR LAND SURVEYING IN THE STATE OF NEW MEXICO.

IN WITNESS WHEREOF, THIS CERTIFICATE IS EXECUTED AT CARLSBAD, NEW MEXICO, THIS 16 DAY OF NOVEMBER 2015

GENERAL NOTES

1.) THE INTENT OF THIS ROUTE SURVEY IS TO ACQUIRE AN EASEMENT.

2.) BASIS OF BEARING IS NMSP EAST MODIFIED TO SURFACE COORDINATES.

SHEET: 2-4

MADRON SURVEYING, INC.

FILIMON F. JARAMILLO NLS 12797
MADRON SURVEYING, INC.
301 SOUTH CANAL
CARLSBAD, NEW MEXICO 88220
Phone (575) 234-3341

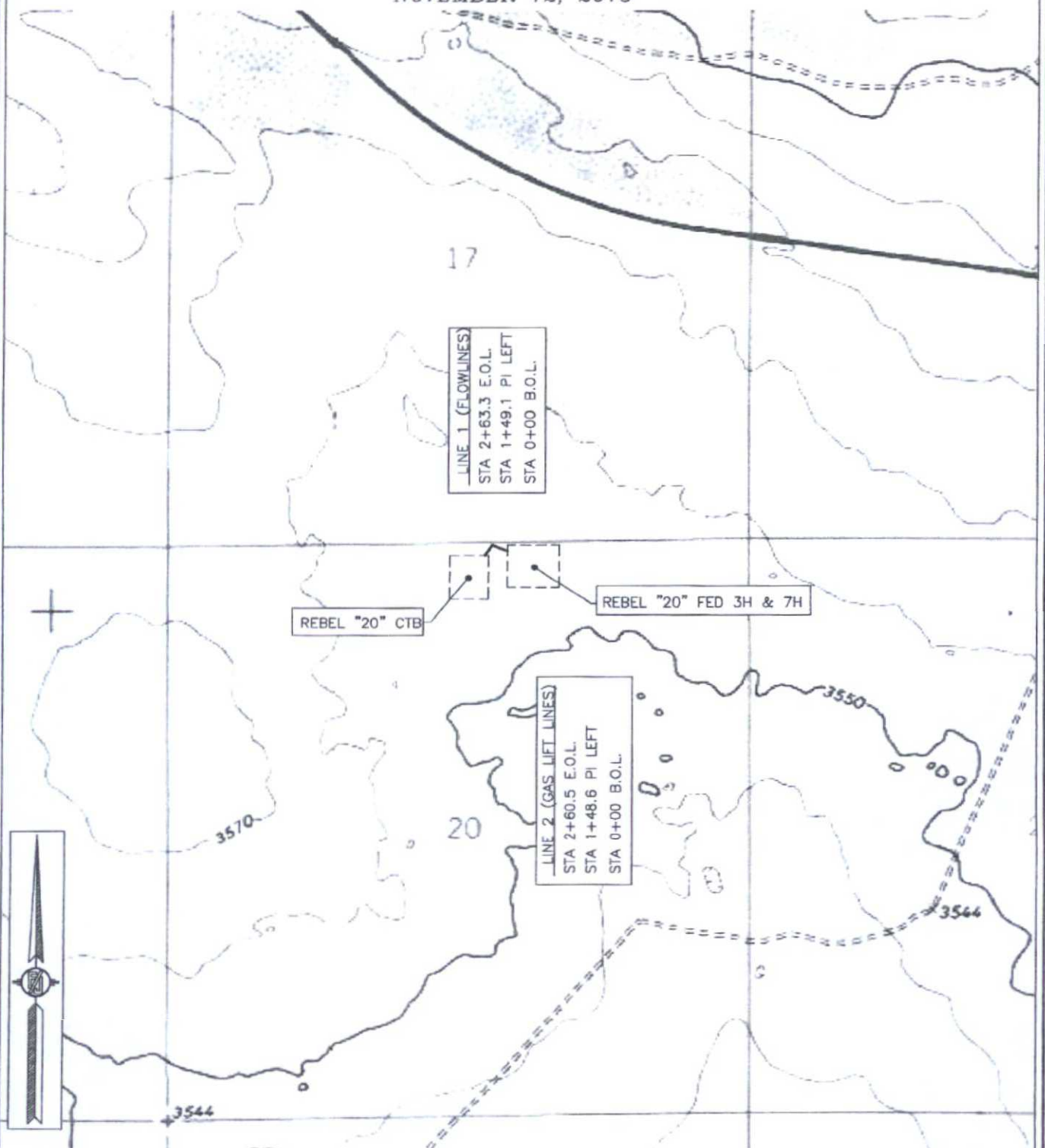
SURVEY NO. 4322

301 SOUTH CANAL
(575) 234-3341 CARLSBAD, NEW MEXICO

FLOWLINE PLAT (400593XYZ)

TWO 6" BURIED FIBER FLOWLINES AND TWO 6" BURIED FIBER GAS LIFT LINES (IN SAME TRENCH)
FROM THE REBEL "20" FED 3H & 7H TO THE REBEL "20" CTB

DEVON ENERGY PRODUCTION COMPANY, L.P.
CENTERLINE SURVEY OF A PIPELINE CROSSING
SECTION 20, TOWNSHIP 24 SOUTH, RANGE 32 EAST, N.M.P.M.
LEA COUNTY, STATE OF NEW MEXICO
NOVEMBER 12, 2015



SHEET: 3-4

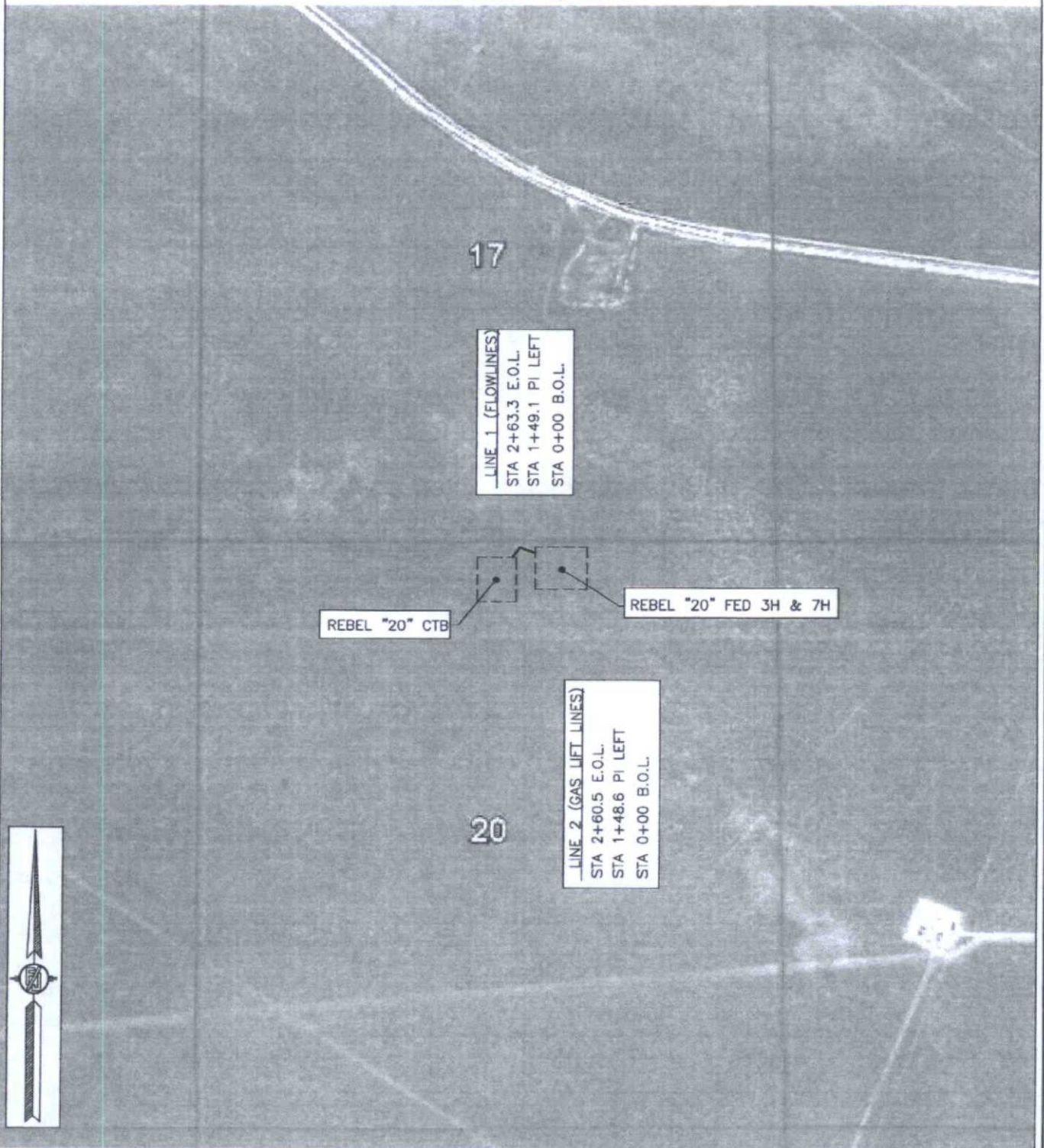
SURVEY NO. 4322

MADRON SURVEYING, INC. 301 SOUTH CANAL (575) 234-3341 CARLSBAD, NEW MEXICO

FLOWLINE PLAT (400593XYZ)

TWO 6" BURIED FIBER FLOWLINES AND TWO 6" BURIED FIBER GAS LIFT LINES (IN SAME TRENCH)
FROM THE REBEL "20" FED 3H & 7H TO THE REBEL "20" CTB

DEVON ENERGY PRODUCTION COMPANY, L.P.
CENTERLINE SURVEY OF A PIPELINE CROSSING
SECTION 20, TOWNSHIP 24 SOUTH, RANGE 32 EAST, N.M.P.M.
LEA COUNTY, STATE OF NEW MEXICO
NOVEMBER 12, 2015



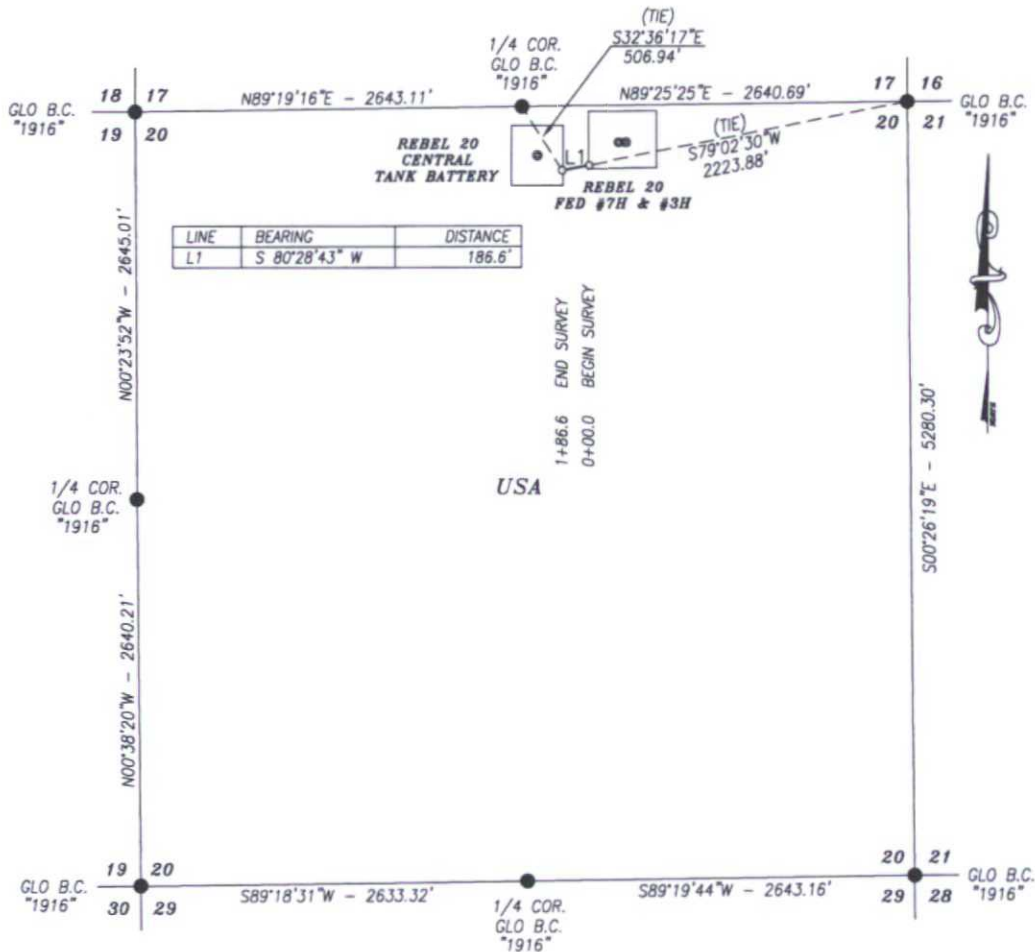
SHEET: 4-4

SURVEY NO. 4322

MADRON SURVEYING, INC. 301 SOUTH CANAL (575) 234-3341 CARLSBAD, NEW MEXICO

FLOW LINE PLAT DEVON ENERGY PRODUCTION CO. L.P.

2 - 6" BURIED FIBER PIPE FLOW FROM THE REBEL 20 FED #3H & 7H TO
REBEL CENTRAL TANK BATTERY IN
SECTION 20, TOWNSHIP 24 SOUTH, RANGE 32 EAST, N.M.P.M.,
LEA COUNTY, NEW MEXICO.



DESCRIPTION

A STRIP OF LAND 30.0 FEET WIDE AND 186.6 FEET OR 11.31 RODS OR 0.035 MILES IN LENGTH CROSSING USA LAND IN SECTION 20, TOWNSHIP 24 SOUTH, RANGE 32 EAST, LEA COUNTY, NEW MEXICO AND BEING 15.0 FEET LEFT AND 15.0 FEET RIGHT OF THE ABOVE PLATTED CENTERLINE SURVEY.

BASIS OF BEARING:
BEARINGS SHOWN HEREON ARE MERCATOR GRID AND CONFORM TO THE NEW MEXICO COORDINATE SYSTEM "NEW MEXICO EAST ZONE" NORTH AMERICAN DATUM 1983. DISTANCES ARE GRID VALUES.

CERTIFICATION
I, CHAD HARCROW, A NEW MEXICO REGISTERED PROFESSIONAL SURVEYOR CERTIFY THAT I DIRECTED AND AM RESPONSIBLE FOR THIS SURVEY, THAT THIS SURVEY IS TRUE AND CORRECT TO THE BEST OF MY KNOWLEDGE AND BELIEF, AND THIS SURVEY AND PLAT MEET THE MINIMUM STANDARDS FOR SURVEYING IN NEW MEXICO.

HARCROW SURVEYING, LLC
2314 W. MAIN ST. ARTESIA, N.M. 88210
PH: (575) 746-2158 FAX: (575) 746-2158
c.harcrow@harcrowsurveying.com



1000 0 1000 2000 FEET
SCALE: 1"=1000'

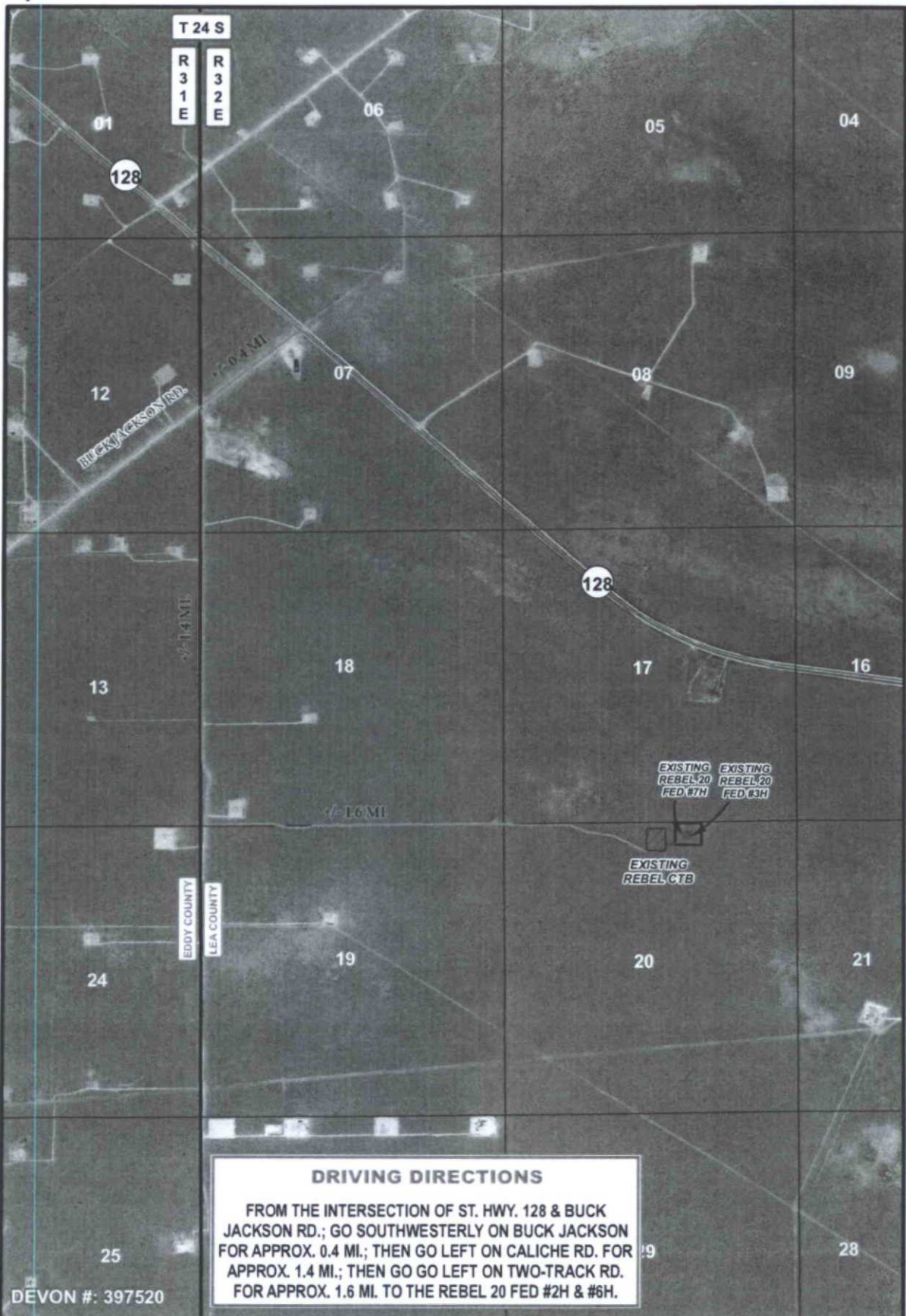


Chad Harcrow
CHAD HARCROW N.M.P.S. NO. 17777
6/1/15
DATE

DEVON ENERGY PRODUCTION CO. L.P.

SURVEY OF A PROPOSED FLOW LINE LOCATED IN
SECTION 20, TOWNSHIP 24 SOUTH, RANGE 32 EAST,
LEA COUNTY, NMPM, NEW MEXICO

SURVEY DATE: MAY 21, 2015	DEVON #: 397520
DRAFTING DATE: MAY 28, 2015	PAGE 1 OF 4
APPROVED BY: CH	DRAWN BY: VD
	FILE: 15-583



LEGEND

- FLOWLINE
- WELL
- WELLPAD
- ▨ TANK BATTERY

DRIVING DIRECTIONS

FROM THE INTERSECTION OF ST. HWY. 128 & BUCK JACKSON RD.; GO SOUTHWESTERLY ON BUCK JACKSON FOR APPROX. 0.4 MI.; THEN GO LEFT ON CALICHE RD. FOR APPROX. 1.4 MI.; THEN GO LEFT ON TWO-TRACK RD. FOR APPROX. 1.6 MI. TO THE REBEL 20 FED #2H & #6H.

REBEL 20 FED #3H & #7H TO REBEL CTB FLOWLINE

SECTION: 20	TOWNSHIP: 24 S.	RANGE: 32 E.
STATE: NEW MEXICO	COUNTY: LEA	SURVEY: N.M.P.M
W.O. # 15-583	LEASE: REBEL 20 FED	

0 2,500 5,000 FEET

0 0.125 0.25 0.5 Miles 1 IN = 2,000 FT

DRIVING DIRECTIONS IMAGERY S.P.

devon
ENERGY PRODUCTION CO. L.P.

HARCROW SURVEYING, LLC.
2314 W. MAIN ST. ARTESIA, NM 88210
PH: (575) 746-2158 FAX: (575) 746-2158
c.harcrow@harcrowsurveying.com

ORIG: 05/29/2015 PAGE: 2 OF 4



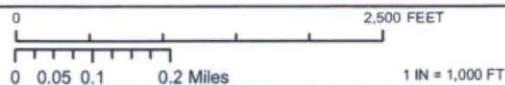
DEVON #: 397520

LEGEND

- FLOWLINE
- WELL
- WELLPAD
- ▨ TANK BATTERY

REBEL 20 FED #3H & #7H TO REBEL CTB FLOWLINE

SECTION: 20 TOWNSHIP: 24 S. RANGE: 32 E.
 STATE: NEW MEXICO COUNTY: LEA SURVEY: N.M.P.M.
 W.O. # 15-583 LEASE: REBEL 20 FED



PIPELINE OVERVIEW

IMAGERY

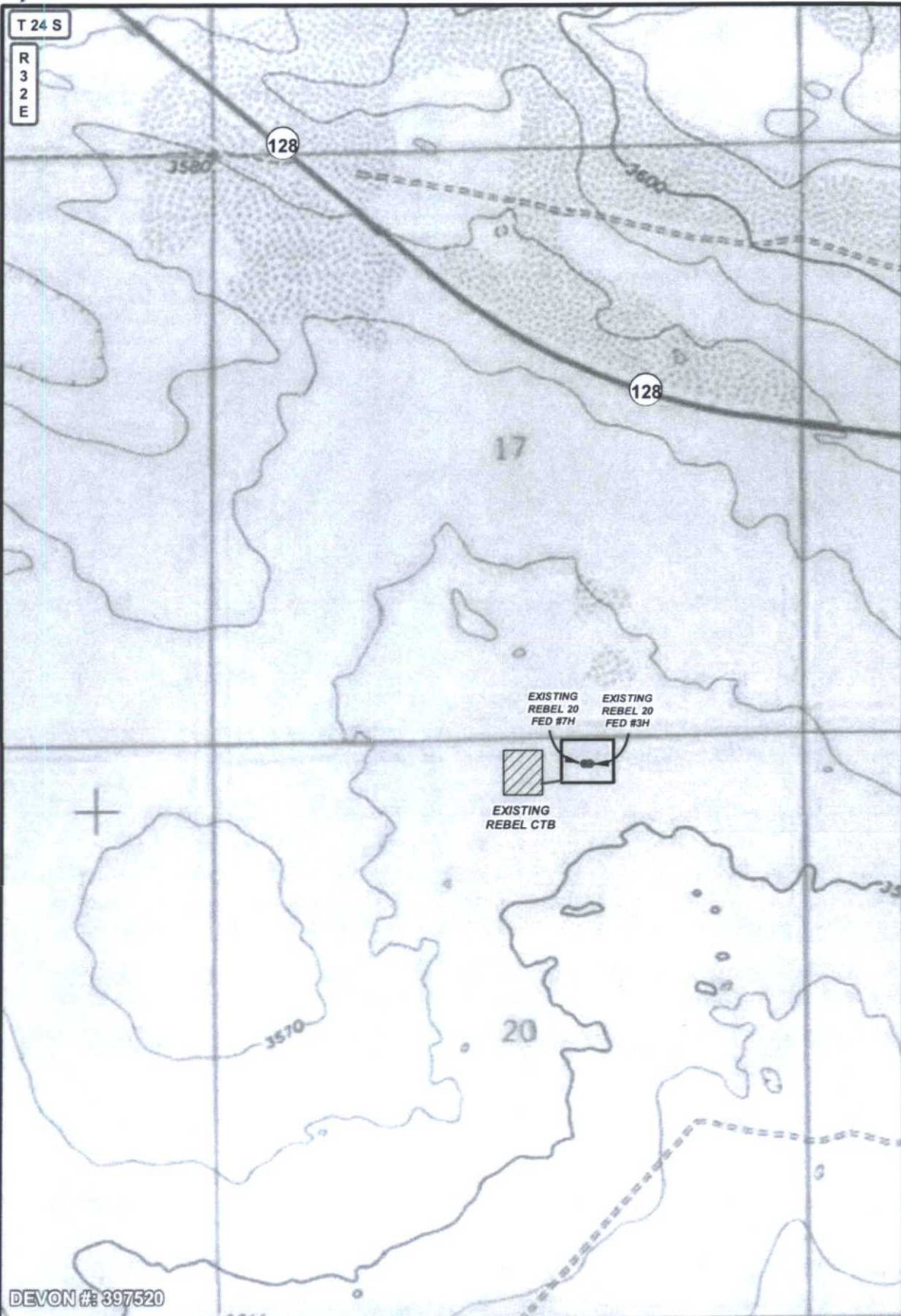
S.P.

devon
ENERGY PRODUCTION CO. L.P.

HARCROW SURVEYING, LLC.
 2314 W. MAIN ST. ARTESIA, NM 88210
 PH: (575) 746-2158 FAX: (575) 746-2158
 c.harcrow@harcrowsurveying.com

ORIG: 05/29/2015

PAGE: 3 OF 4

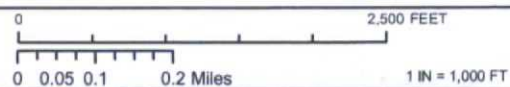


LEGEND

- FLOWLINE
- WELL
- WELLPAD
- ▨ TANK BATTERY
- PRIVATE
- STATE OF NM
- US BLM

REBEL 20 FED #3H & #7H TO REBEL CTB FLOWLINE

SECTION: 20 TOWNSHIP: 24 S. RANGE: 32 E.
STATE: NEW MEXICO COUNTY: LEA SURVEY: N.M.P.M.
W.O. # 15-583 LEASE: REBEL 20 FED



PIPELINE OVERVIEW

LAND STATUS

S.P.

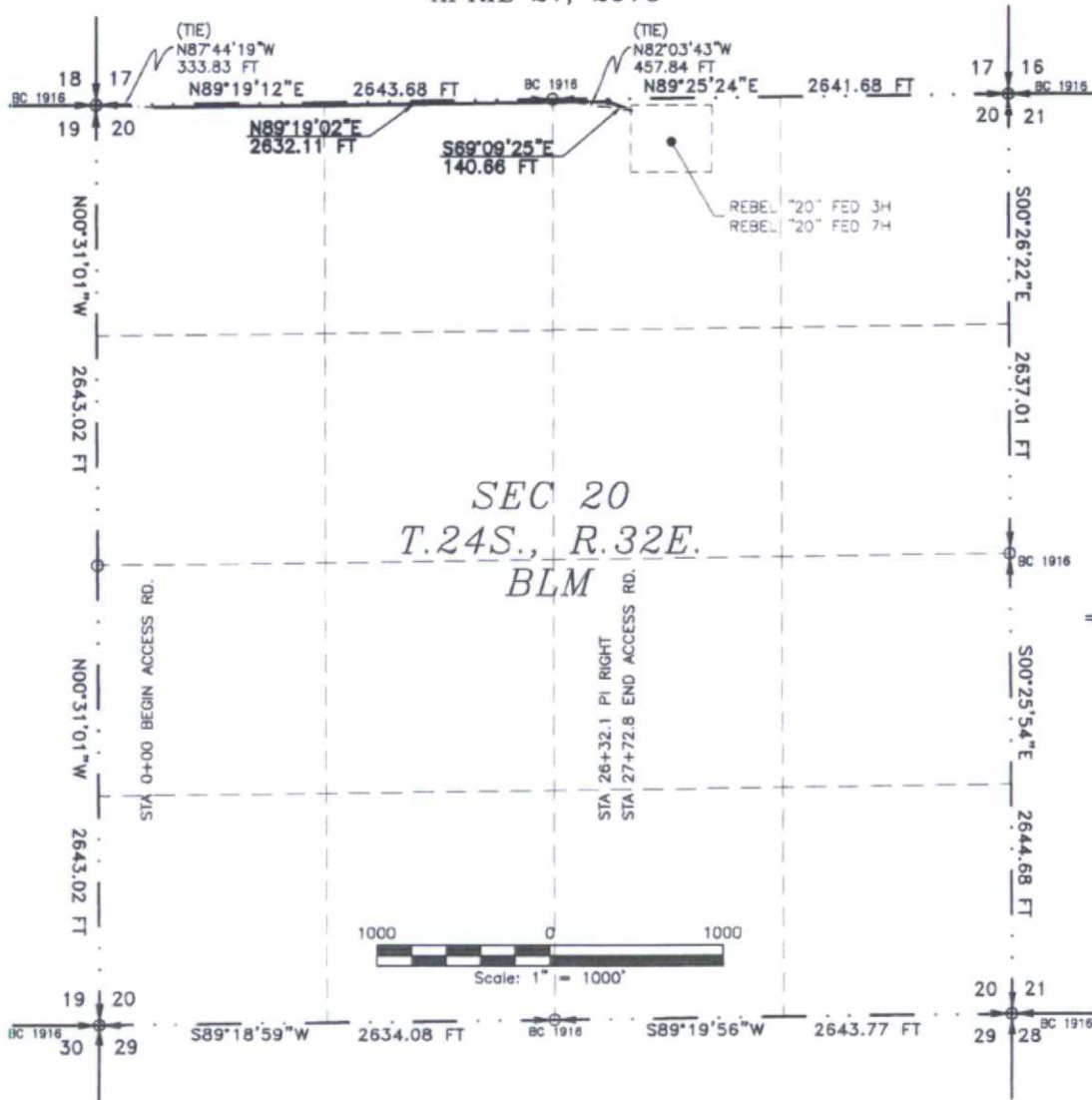
ORIG: 05/29/2015

PAGE: 4 OF 4

devon
ENERGY PRODUCTION CO. L.P.

HARCROW SURVEYING, LLC.
2314 W. MAIN ST. ARTESIA, NM 88210
PH: (575) 746-2158 FAX: (575) 746-2158
c.harcrow@harcrowsurveying.com

ACCESS ROAD PLAT
 ACCESS ROAD TO THE REBEL "20" FED 3H & THE REBEL "20" FED 7H
DEVON ENERGY PRODUCTION COMPANY, L.P.
 CENTERLINE SURVEY OF AN ACCESS ROAD CROSSING
 SECTION 20, TOWNSHIP 24 SOUTH, RANGE 32 EAST, N.M.P.M.
 LEA COUNTY, STATE OF NEW MEXICO
 APRIL 21, 2015



SEE NEXT SHEET (2-4) FOR DESCRIPTION

SURVEYOR CERTIFICATE

I, FILMON F. JARAMILLO, A NEW MEXICO PROFESSIONAL SURVEYOR NO. 12797, HEREBY CERTIFY THAT I HAVE CONDUCTED AND AM RESPONSIBLE FOR THIS SURVEY, THAT THIS SURVEY IS TRUE AND CORRECT TO THE BEST OF MY KNOWLEDGE AND BELIEF, AND THAT THIS SURVEY AND PLAT MEET THE MINIMUM STANDARDS FOR LAND SURVEYING IN THE STATE OF NEW MEXICO.

IN WITNESS WHEREOF, THIS CERTIFICATE IS EXECUTED AT CARLSBAD, NEW MEXICO, THIS 11 DAY OF MAY 2015.

GENERAL NOTES

- 1.) THE INTENT OF THIS ROUTE SURVEY IS TO ACQUIRE AN EASEMENT.
- 2.) BASIS OF BEARING IS NMSP EAST MODIFIED TO SURFACE COORDINATES.

MADRON SURVEYING, INC.
 301 SOUTH CANAL
 CARLSBAD, NEW MEXICO 88220
 Phone (575) 234-3341

SHEET: 1-4

MADRON SURVEYING, INC. SURVEY NO. 3962
 301 SOUTH CANAL CARLSBAD, NEW MEXICO
 (575) 234-3341

ACCESS ROAD PLAT

ACCESS ROAD TO THE REBEL "20" FED 3H & THE REBEL "20" FED 7H

DEVON ENERGY PRODUCTION COMPANY, L.P.
CENTERLINE SURVEY OF AN ACCESS ROAD CROSSING
SECTION 20, TOWNSHIP 24 SOUTH, RANGE 32 EAST, N.M.P.M.
LEA COUNTY, STATE OF NEW MEXICO
APRIL 21, 2015

DESCRIPTION

A STRIP OF LAND 20 FEET WIDE CROSSING BUREAU OF LAND MANAGEMENT LAND IN SECTION 20, TOWNSHIP 24 SOUTH, RANGE 32 EAST, N.M.P.M., LEA COUNTY, STATE OF NEW MEXICO AND BEING 10 FEET EACH SIDE OF THE FOLLOWING DESCRIBED CENTERLINE SURVEY:

BEGINNING AT A POINT WITHIN THE NW/4 NW/4 OF SAID SECTION 20, TOWNSHIP 24 SOUTH, RANGE 32 EAST, N.M.P.M., WHENCE THE NORTHWEST CORNER OF SAID SECTION 20, TOWNSHIP 24 SOUTH, RANGE 32 EAST, N.M.P.M. BEARS N87°44'19"W, A DISTANCE OF 333.83 FEET;

THENCE N89°19'02"E A DISTANCE OF 2632.11 FEET TO AN ANGLE POINT OF THE LINE HEREIN DESCRIBED;

THENCE S69°09'25"E A DISTANCE OF 140.66 FEET THE TERMINUS OF THIS CENTERLINE SURVEY, WHENCE THE NORTH QUARTER CORNER OF SAID SECTION 20, TOWNSHIP 24 SOUTH, RANGE 32 EAST, N.M.P.M. BEARS N82°03'43"W, A DISTANCE OF 457.84 FEET;

SAID STRIP OF LAND BEING 2772.77 FEET OR 168.04 RODS IN LENGTH, CONTAINING 1.273 ACRES MORE OR LESS AND BEING ALLOCATED BY FORTIES AS FOLLOWS:

NW/4 NW/4	988.38 L.F.	59.90 RODS	0.454 ACRES
NE/4 NW/4	1321.82 L.F.	80.11 RODS	0.607 ACRES
NW/4 NE/4	462.57 L.F.	28.03 RODS	0.212 ACRES

SURVEYOR CERTIFICATE

I, FILIMON F. JARAMILLO, A NEW MEXICO PROFESSIONAL SURVEYOR NO. 12797, HEREBY CERTIFY THAT I HAVE CONDUCTED AND AM RESPONSIBLE FOR THIS SURVEY, THAT THIS SURVEY IS TRUE AND CORRECT TO THE BEST OF MY KNOWLEDGE AND BELIEF, AND THAT THIS SURVEY AND PLAT MEET THE MINIMUM STANDARDS FOR LAND SURVEYING IN THE STATE OF NEW MEXICO.

IN WITNESS WHEREOF, THIS CERTIFICATE IS EXECUTED AT CARLSBAD,

NEW MEXICO, THIS 11 DAY OF MAY 2015

GENERAL NOTES

1.) THE INTENT OF THIS ROUTE SURVEY IS TO ACQUIRE AN EASEMENT.

2.) BASIS OF BEARING IS NMSP EAST MODIFIED TO SURFACE COORDINATES.

SHEET: 2-4

MADRON SURVEYING, INC. 301 SOUTH CANAL (575) 234-3341

SURVEY NO. 3962

CARLSBAD, NEW MEXICO

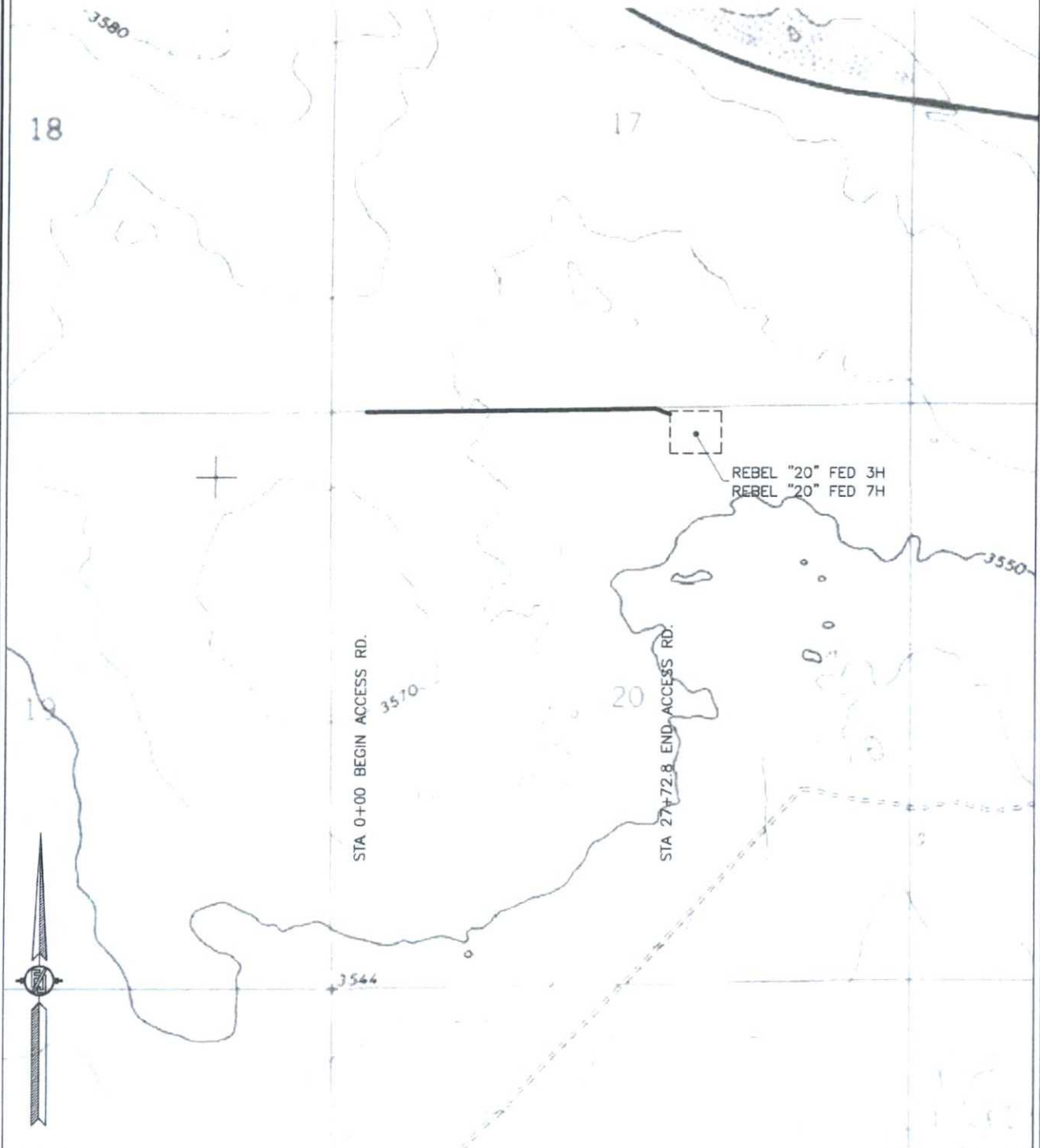
MADRON SURVEYING, INC.
301 SOUTH CANAL
CARLSBAD, NEW MEXICO 88220
Phone (575) 234-3341

FILIMON F. JARAMILLO PLS 12797

ACCESS ROAD PLAT

ACCESS ROAD TO THE REBEL "20" FED 3H & THE REBEL "20" FED 7H

DEVON ENERGY PRODUCTION COMPANY, L.P.
CENTERLINE SURVEY OF AN ACCESS ROAD CROSSING
SECTION 20, TOWNSHIP 24 SOUTH, RANGE 32 EAST, N.M.P.M.
LEA COUNTY, STATE OF NEW MEXICO
APRIL 21, 2015



SHEET: 3-4

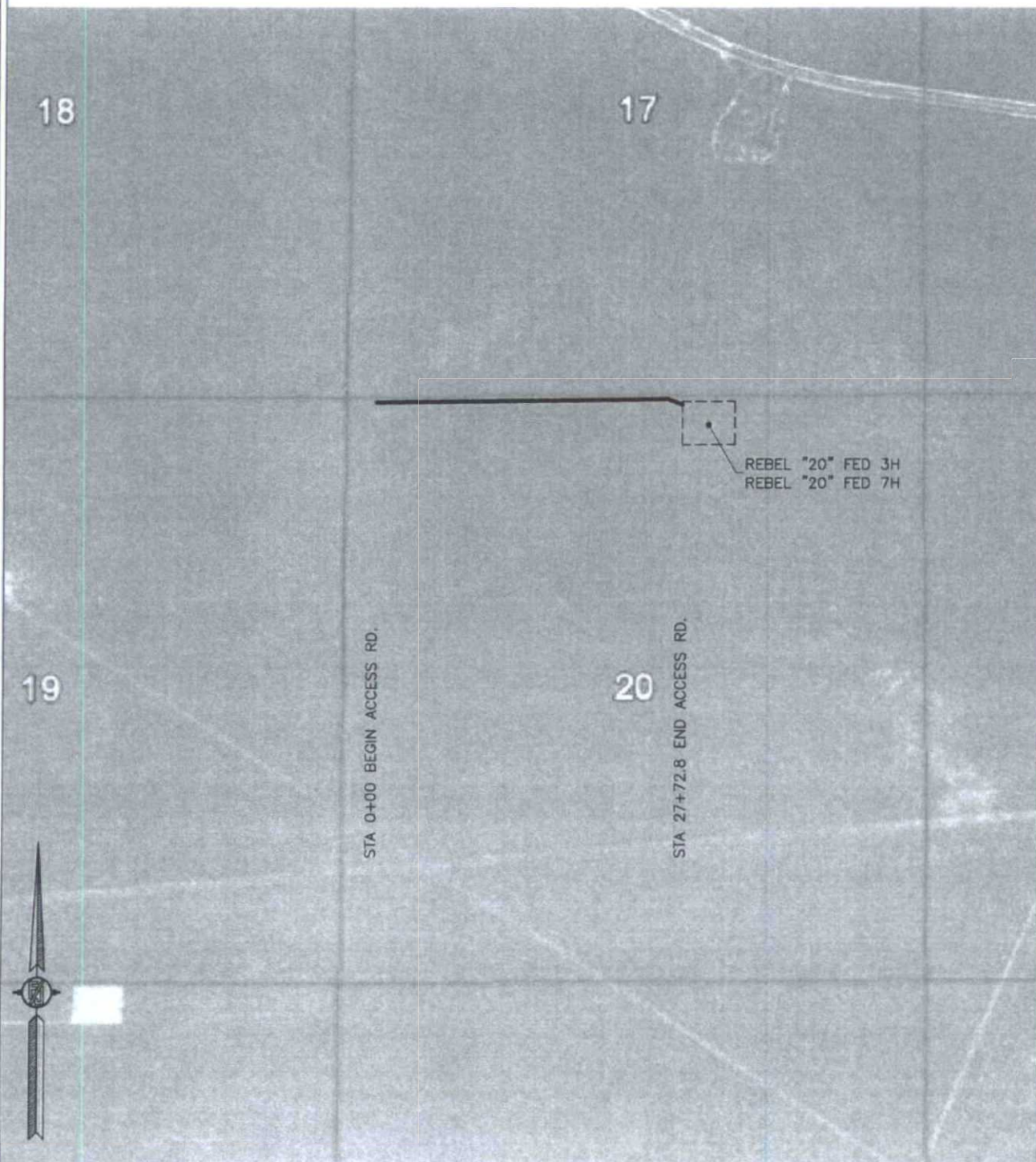
MADRON SURVEYING, INC. 301 SOUTH CANAL (575) 234-3341 CARLSBAD, NEW MEXICO

SURVEY NO. 3962

ACCESS ROAD PLAT

ACCESS ROAD TO THE REBEL "20" FED 3H & THE REBEL "20" FED 7H

DEVON ENERGY PRODUCTION COMPANY, L.P.
CENTERLINE SURVEY OF AN ACCESS ROAD CROSSING
SECTION 20, TOWNSHIP 24 SOUTH, RANGE 32 EAST, N.M.P.M.
LEA COUNTY, STATE OF NEW MEXICO
APRIL 21, 2015



SHEET: 4-4

SURVEY NO. 3962

MADRON SURVEYING, INC. 301 SOUTH CANAL (575) 234-3341 CARLSBAD, NEW MEXICO

SURFACE USE PLAN

Devon Energy Production Company, L.P.

The on-site inspection for these projects was performed on 3/31/2015 by CEHMM

Rebel 20 Fed 3H

1. Existing Roads:

- a. The well site and elevation plat for the proposed well are reflected on the "Site Map". The well was staked by Madron Surveying, Inc.
- b. All roads into the location are depicted on the "Vicinity Map". The operator will repair pot holes, clear ditches, repair the crown, etc. All existing structures on the entire access route such as cattle guards, culverts, etc. will be properly repaired or replaced if they are damaged or have deteriorated beyond practical use. BLM written approval will be acquired before application of surfactants, binding agents, or other dust suppression chemicals on roadways.
- c. Directions to Location: From the intersection of State Highway 128 and Buck Jackson Road go Southwest on Buck Jackson Road 0.43 miles to Caliche Lease Road, West of Caliche Pit on Left, go South on Caliche Lease Road 1.45 miles to existing 2-track road on left. Go East on 2-track road along the South side of the North line of Section 19, 1.0 miles to the Northeast corner of Section 19, follow proposed flagged road line along the South side of the North line of section 20, Go East 0.32 miles to Northwest corner of pad.

2. New or Reconstructed Access Roads:

- a. The "Site Map" and "Access Road Plat" shows new constructed access road, which will be approximately 1396.78 LF from the existing Lease road. See "Access Road Plat".
- b. The maximum driving width of the access road will be 14 feet. The maximum width of surface disturbance when constructing the access road will not exceed 25 feet. The road will be crowned and ditched with 2% slope from the tip of the crown to the edge of the driving surface. The ditches will be 3 feet wide with 3:1 slopes. The driving surface will be made of 6" rolled and compacted caliche.
- c. When cutting fences separating ownership lines of the rancher(s), Devon will install cattle guards to prevent the loss of cattle. Devon will assume responsibility for any damages that occur to fences when moving a rig in or out of the area. No turnouts are planned.

3. Location of Existing Wells:

The attached "One Mile Radius Map" shows all existing and proposed wells within a one-mile radius of the proposed location.

4. Location of Existing and/or Proposed Production Facilities:

- a. In the event the well is found productive, the Rebel 20 Central Tank Battery, located in Sec 20-T24S-R32E would be utilized and shared. This well will be padded with the Rebel 20 Fed 7H.

- b. Two 6" buried Fiber Flow Lines and Two 6" buried Fiber Gas Lift Lines (in same trench) will run approximately 263' from the Rebel 20 Fed 3H & 7H to the Rebel 20 CTB. See "Flow Line & Gas Lift Line Plat".
- c. If necessary, the well will be operated by means of an electric distribution line. If electric power poles are needed, a plat and a sundry notice will be filed with your office.
- d. All flow lines will adhere to API standards.
- e. If the well is productive, rehabilitation plans are as follows:
 - i. A closed loop system will be utilized.
 - ii. The original topsoil from the well site will be returned to the location. The drill site will then be contoured as close as possible to the original state.

5. Location and Types of Water Supply:

This location will be drilled using a combination of water mud systems (outlined in the Drilling Program). The water will be obtained from commercial water stations in the area and hauled to location by transport truck using the existing and proposed roads described and depicted on the "Vicinity Map". On occasion, water will be obtained from a pre-existing water well, running a pump directly to the drill rig. In cases where a poly pipeline is used to transport water for drilling purposes, proper authorizations will be secured. If a poly pipeline is used, the size, distance, and map showing route will be provided to the BLM via sundry notice.

6. Construction Materials:

Obtaining caliche: One primary way of obtaining caliche to build locations and roads will be by "turning over" the location. This means caliche will be obtained from the actual well site. Actual amounts will vary for each pad. The procedure below has been approved by BLM personnel:

- a. The top 6 inches of topsoil is pushed off and stockpiled along the side of the location.
- b. Subsoil is removed and stockpiled within the surveyed well pad.
- c. When caliche is found, material will be stock piled within the pad site to build the location and road.
- d. Then subsoil is pushed back in the hole and caliche is spread accordingly across entire location and road.
- e. Once well is drilled, the stock piled top soil will be used for interim reclamation and spread along areas where caliche is picked up and the location size is reduced.
- f. Neither caliche, nor subsoil will be stock piled outside of the well pad. Topsoil will be stockpiled along the edge of the pad as depicted in the Well Site Layout or survey plat.

In the event that no caliche is found onsite, caliche will be hauled in from a BLM approved caliche pit or other established mineral pit. A BLM mineral material permit will be acquired prior to obtaining any mineral material from BLM pits or land.

7. Methods of Handling Waste Material:

- a. Drill cuttings will be safely contained in a closed loop system and disposed of properly at a NMOCD approved disposal site.
- b. All trash, junk and other waste material will be contained in trash cages or trash bins to prevent scattering. When the job is completed all contents will be removed and disposed of in an approved sanitary landfill.

- c. The supplier will pick up salts remaining after completion of well, including broken sacks.
- d. A Porto-john will be provided for the rig crews. This equipment will be properly maintained during the drilling and completion operations and will be removed when all operations are complete.
- e. Remaining drilling fluids will be sent to a closed loop system. Water produced during completion will be put into a closed loop system. Oil and condensate produced will be put into a storage tank and sold.
- f. Disposal of fluids to be transported by the following companies:
 - i. American Production Service Inc, Odessa TX
 - ii. Gandy Corporation, Lovington NM
 - iii. I & W Inc, Loco Hill NM
 - iv. Jims Water Service of Co Inc, Denver CO

8. **Ancillary Facilities:** No campsite or other facilities will be constructed as a result of this well.

9. **Well Site Layout**

- a. The Rig Location Layout attachment shows the proposed well site layout and pad dimensions.
- b. The Rig Location Layout attachment proposes location of sump pits and living facilities.
- c. Mud pits in the active circulating system will be steel pits.
- d. A closed loop system will be utilized. Devon will provide a copy of the Design Plan to the BLM.

10. **Plans for Surface Reclamation:**

- a. After concluding the drilling and/or completion operations, if the well is found non-commercial, the caliche will be removed from the pad and transported to the original caliche pit or used for other drilling locations. The road will be reclaimed as directed by the BLM. The original top soil will again be returned to the pad and contoured, as close as possible, to the original topography.
- b. The location and road will be rehabilitated as recommended by the BLM.
- c. If the well is deemed commercially productive, caliche from areas of the pad site not required for operations will be reclaimed. The original top soil will be returned to the area of the drill pad not necessary to operate the well. These unused areas of the drill pad will be contoured, as close as possible, to match the original topography.
- d. All disturbed areas not needed for active support of production operations will undergo interim reclamation. The portions of the cleared well site not needed for operational and safety purposes will be recontoured to a final or intermediate contour that blends with the surrounding topography as much as possible. Topsoil will be respread over areas not needed for all-weather operations.

11. **Surface Ownership**

- a. The surface is owned by the US Government and is administered by the Bureau of Land Management. The surface is multiple use with the primary uses of the region for the grazing of livestock and the production of oil and gas.
- b. The proposed road routes and the surface location will be restored as directed by the BLM.

12. Other Information:

- a. The area surrounding the well site is grassland. The topsoil is very sandy in nature. The vegetation is moderately sparse with native prairie grass, sage bush, yucca and miscellaneous weeds. No wildlife was observed but it is likely that deer, rabbits, coyotes, and rodents traverse the area.
- b. There is no permanent or live water in the general proximity of the location.
- c. There are no dwellings within 2 miles of location.
- d. A Cultural Resources Examination will be completed by the Permian Basin Cultural Resource Fund in lieu of being required to conduct a Class III Survey for cultural resources associated with their project within the BLM office in Carlsbad, New Mexico.

13. Bond Coverage:

Bond Coverage is Nationwide; Bond # is CO-1104.

Operators Representative:

The Devon Energy Production Company, L.P. representatives responsible for ensuring compliance of the surface use plan are listed below.

James Allbee, Program Supervisor
Devon Energy Production Company, L.P.
333 W. Sheridan
Oklahoma City, OK 73102-5010
(405) 228-8698 (office)
(405) 820-8682 (Cellular)

Don Mayberry - Superintendent
Devon Energy Production Company, L.P.
Post Office Box 250
Artesia, NM 88211-0250
(575) 748-3371 (office)
(575) 746-4945 (home)

Certification

I hereby certify that I, or persons under my direct supervision, have inspected the proposed drill site and access road proposed herein; that I am familiar with the conditions that presently exist; that I have full knowledge of State and Federal laws applicable to this operation; that the statements made in this APD package are, to the best of my knowledge, true and correct; and that the work associated with the operations proposed herein will be performed in conformity with this APD package and the terms and conditions under which it is approved. I also certify that I, or Devon Energy Production Company, L.P. am responsible for the operations conducted under this application. These statements are subject to the provisions of 18 U.S.C. 1001 for the filing of false statements.

I hereby also certify that I, or Devon Energy Production Company, L.P. have made a good faith effort to provide the surface owner with a copy of the Surface Use Plan of Operations and any Conditions of Approval that are attached to the APD.

Executed this 8th day of June, 2015.

Printed Name: Linda Good

Signed Name: 

Position Title: Regulatory Compliance Specialist

Address: 333 W. Sheridan, OKC OK 73102

Telephone: (405)-552-6558