



**Devon Energy Center
333 West Sheridan Avenue
Oklahoma City, Oklahoma 73102-5015**

Hydrogen Sulfide (H₂S) Contingency Plan

For

Rebel 20 Fed 7H

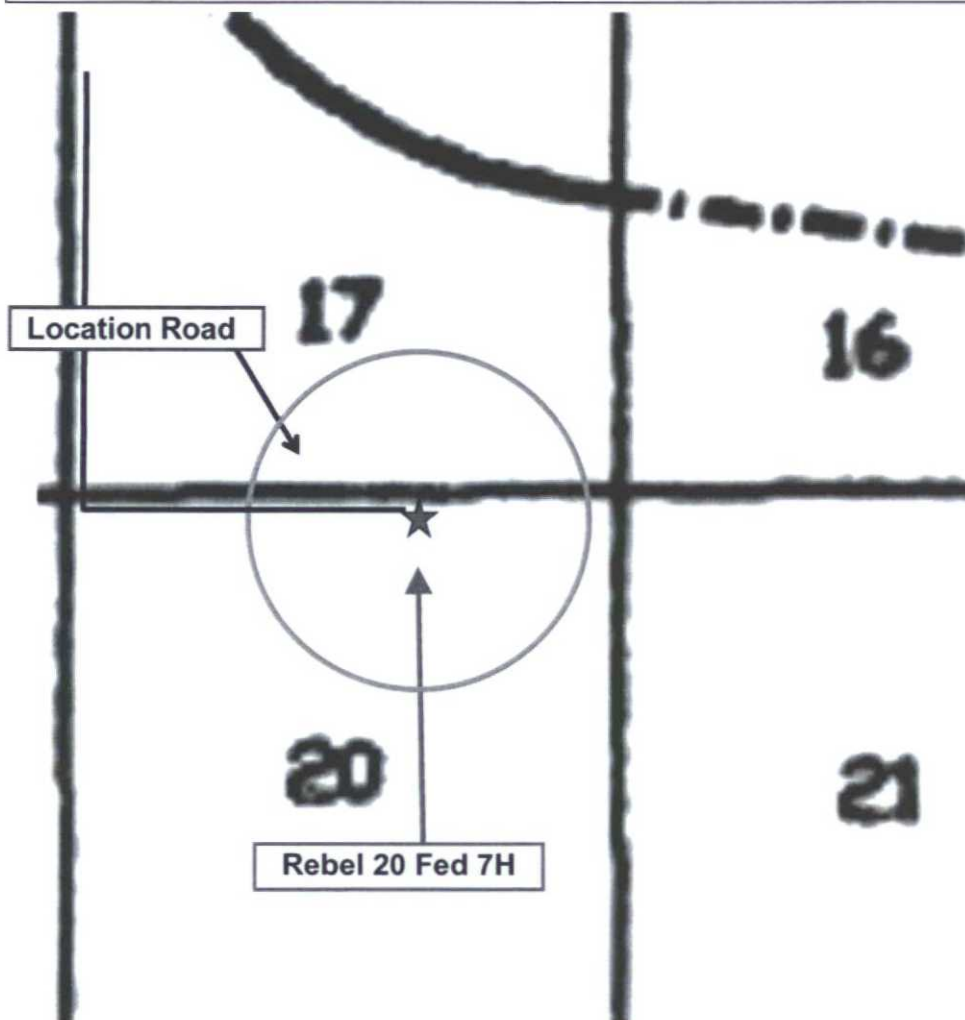
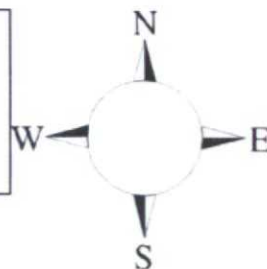
**Sec-20 T-24S R-32E
250' FNL & 1980' FEL
LAT. = 32.2095369' N (NAD83)
LONG = 103.6946030' W**

Lea County NM

JAN 04 2016

Rebel 20 Fed 7H

This is an open drilling site. H₂S monitoring equipment and emergency response equipment will be used within 500' of zones known to contain H₂S, including warning signs, wind indicators and H₂S monitor.



Assumed 100 ppm 3000' ()
100 ppm H₂S concentration shall trigger activation of this plan.

Escape

Crews shall escape upwind of escaping gas in the event of an emergency release of gas. Escape can be facilitated from the location entrance road. Crews should then block the entrance to the location from the lease road so as not to allow anyone traversing into a hazardous area. The blockade should be at a safe distance outside of the ROE. There are no homes or buildings in or near the ROE.

Assumed 100 ppm ROE = 3000'

100 ppm H₂S concentration shall trigger activation of this plan.

Emergency Procedures

In the event of a release of gas containing H₂S, the first responder(s) must

- Isolate the area and prevent entry by other persons into the 100 ppm ROE.
- Evacuate any public places encompassed by the 100 ppm ROE.
- Be equipped with H₂S monitors and air packs in order to control the release.
- Use the "buddy system" to ensure no injuries occur during the response
- Take precautions to avoid personal injury during this operation.
- Contact operator and/or local officials to aid in operation. See list of phone numbers attached.
- Have received training in the
 - Detection of H₂S, and
 - Measures for protection against the gas,
 - Equipment used for protection and emergency response.

Ignition of Gas Source

Should control of the well be considered lost and ignition considered, take care to protect against exposure to Sulfur Dioxide (SO₂). Intentional ignition must be coordinated with the NMOCD and local officials. Additionally the NM State Police may become involved. NM State Police shall be the Incident Command on scene of any major release. Take care to protect downwind whenever there is an ignition of the gas

Characteristics of H₂S and SO₂

Common Name	Chemical Formula	Specific Gravity	Threshold Limit	Hazardous Limit	Lethal Concentration
Hydrogen Sulfide	H ₂ S	1.189 Air = 1	10 ppm	100 ppm/hr	600 ppm
Sulfur Dioxide	SO ₂	2.21 Air = 1	2 ppm	N/A	1000 ppm

Contacting Authorities

Devon Energy Corp. personnel must liaison with local and state agencies to ensure a proper response to a major release. Additionally, the OCD must be notified of the release as soon as possible but no later than 4 hours. Agencies will ask for information such as type and volume of release, wind direction, location of release, etc. Be prepared with all information available. The following call list of essential and potential responders has been prepared for use during a release. Devon Energy Corp. Company response must be in coordination with

Hydrogen Sulfide Drilling Operation Plan

I. HYDROGEN SULFIDE (H₂S) TRAINING

All personnel, whether regularly assigned, contracted, or employed on an unscheduled basis, will receive training from a qualified instructor in the following areas prior to commencing drilling operations on this well:

1. The hazards and characteristics of hydrogen sulfide (H₂S)
2. The proper use and maintenance of personal protective equipment and life support systems.
3. The proper use of H₂S detectors, alarms, warning systems, briefing areas, evacuation procedures, and prevailing winds.
4. The proper techniques for first aid and rescue procedures.

In addition, supervisory personnel will be trained in the following areas:

1. The effects of H₂S metal components. If high tensile tubulars are to be used, personnel will be trained in their special maintenance requirements.
2. Corrective action and shut-in procedures when drilling or reworking a well and blowout prevention and well control procedures.
3. The contents and requirements of the H₂S Drilling Operations Plan and Public Protection Plan.

There will be an initial training session just prior to encountering a known or probable H₂S zone (within 3 days or 500 feet) and weekly H₂S and well control drills for all personnel in each crew. The initial training session shall include a review of the site specific H₂S Drilling Operations Plan and the Public Protection Plan.

II. HYDROGEN SULFIDE TRAINING

Note: All H₂S safety equipment and systems will be installed, tested, and operational when drilling reaches a depth of 500 feet above, or three days prior to penetrating the first zone containing or reasonably expected to contain H₂S.

1. Well Control Equipment

- A. Flare line
- B. Choke manifold – Remotely Operated
- C. Blind rams and pipe rams to accommodate all pipe sizes with properly sized closing unit
- D. Auxiliary equipment may include if applicable: annular preventer and rotating head.
- E. Mud/Gas Separator

2. Protective equipment for essential personnel:

30-minute SCBA units located at briefing areas, as indicated on well site diagram, with escape units available in the top doghouse. As it may be difficult to communicate audibly while wearing these units, hand signals shall be utilized.

3. H₂S detection and monitoring equipment:

Portable H₂S monitors positioned on location for best coverage and response. These units have warning lights which activate when H₂S levels reach 10 ppm and audible sirens which activate at 15 ppm. Sensor locations:

- Bell nipple
- Shale shaker
- Trip tank
- Suction pit
- Rig floor
- Cellar
- Choke manifold
- Living Quarters (usually the company man's trailer stairs.)

Visual warning systems:

- A. Wind direction indicators as shown on well site diagram
- B. Caution/ Danger signs shall be posted on roads providing direct access to locations. Signs will be painted a high visibility yellow with black lettering of sufficient size to be reasonable distance from the immediate location. Bilingual signs will be used when appropriate.

4. Mud program:

The mud program has been designed to minimize the volume of H₂S circulated to surface. Proper mud weight, safe drilling practices and the use of H₂S scavengers will minimize hazards when penetrating H₂S bearing zones.

5. Metallurgy:

- A. All drill strings, casings, tubing, wellhead, blowout preventer, drilling spool, kill lines, choke manifold lines, and valves shall be H₂S trim.
- B. All elastomers used for packing and seals shall be H₂S trim.

6. Communication:

- A. Company personnel have/use cellular telephones in the field.
- B. Land line (telephone) communications at Office

7. Well testing:

- A. Drill stem testing will be performed with a minimum number of personnel in the immediate vicinity, which are necessary to safety and adequately conduct the test. The drill stem testing will be conducted during daylight hours and formation fluids will not be flowed to the surface. All drill-stem-testing operations conducted in an H₂S environment will use the closed chamber method of testing.
- B. There will be no drill stem testing.

Devon Energy Corp. Company Call List

Carlsbad (575)

Cellular

Drilling Supervisor – Basin – Mark Kramer.....	405-823-4796
Drilling Supervisor – Slope – Norman Naill.....	405-760-7234
EHS Professional – Mark Hurst.....	575-513-9087

Agency Call List

Lea

Hobbs

County (575)

Lea County Communication Authority	393-3981
State Police	392-5588
City Police	397-9265
Sheriff's Office	393-2515
Ambulance	911
Fire Department.....	397-9308
LEPC (Local Emergency Planning Committee).....	393-2870
NMOCD	393-6161
US Bureau of Land Management.....	393-3612

Eddy

Carlsbad

County (575)

State Police	885-3137
City Police	885-2111
Sheriff's Office	887-7551
Ambulance	911
Fire Department.....	885-2111
LEPC (Local Emergency Planning Committee).....	887-3798
US Bureau of Land Management.....	887-6544
NM Emergency Response Commission (Santa Fe)	(505) 476-9600
24 HR	(505) 827-9126
National Emergency Response Center (Washington, DC)	(800) 424-8802

Emergency Services

Wild Well Control	(281) 784-4700
Cudd Pressure Control.....	(915) 699-0139 or (915) 563-3356
Halliburton	(575) 746-2757
B. J. Services.....	(575) 746-3569

Give

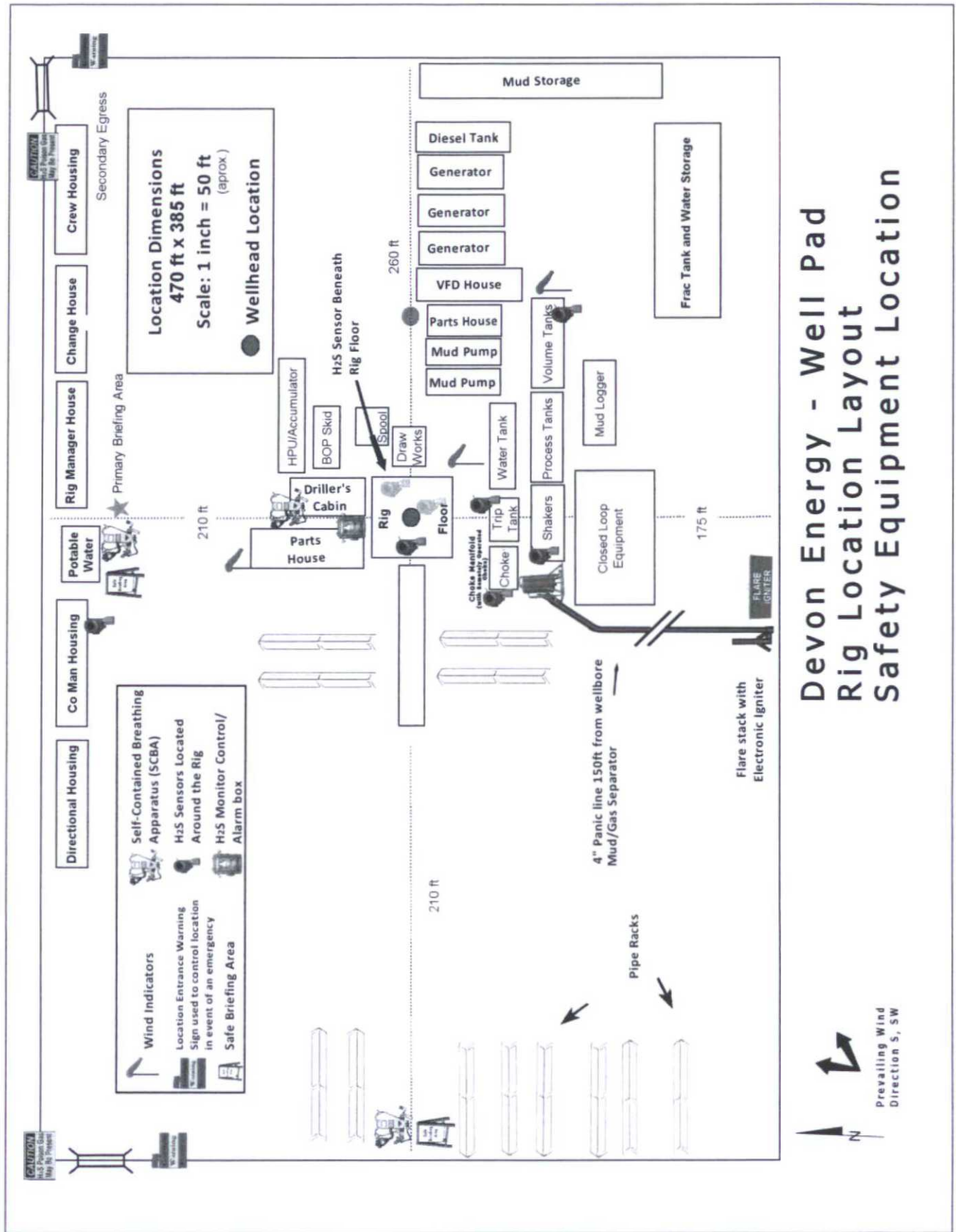
GPS

position:

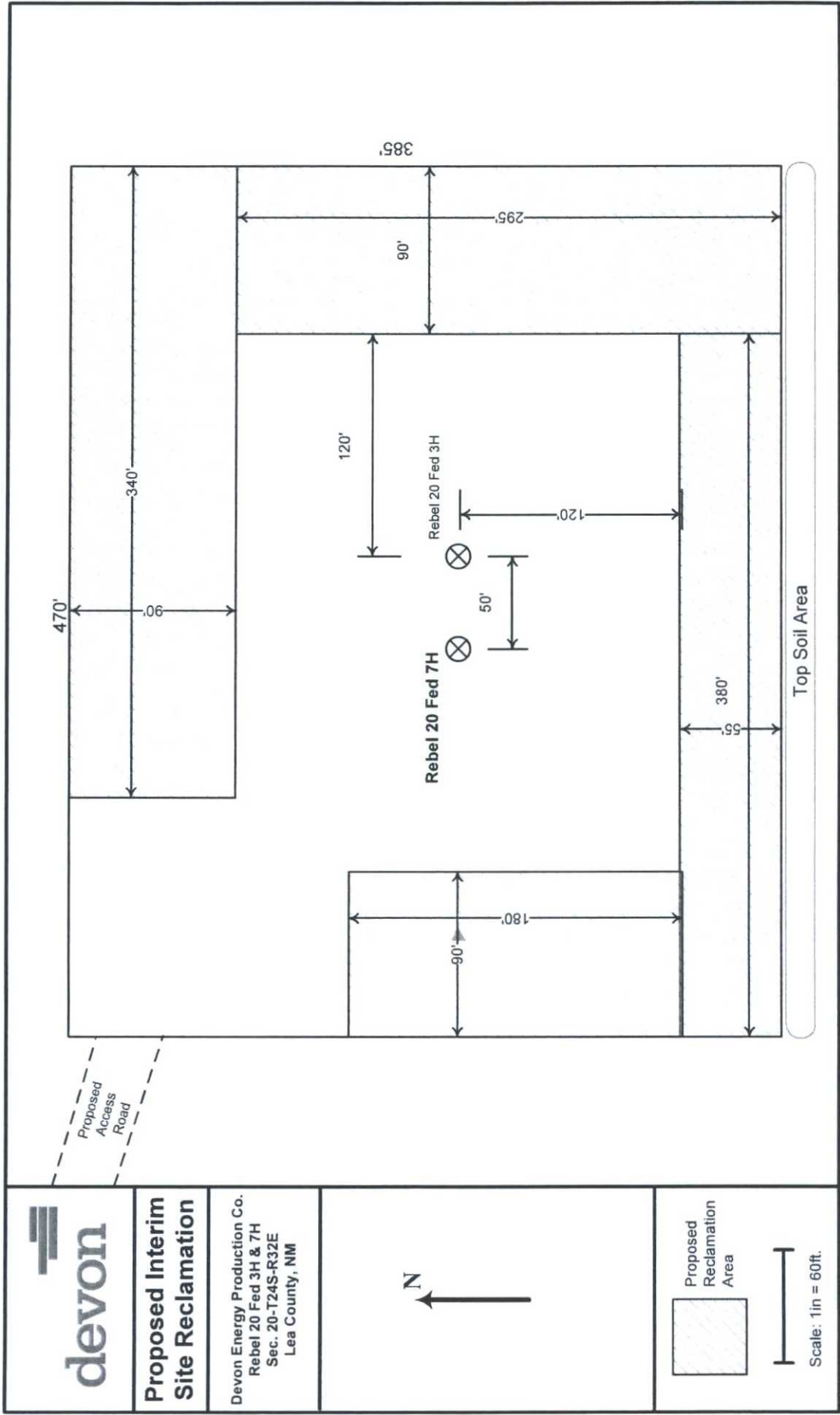
Native Air – Emergency Helicopter – Hobbs.....	(575) 392-6429
Flight For Life - Lubbock, TX	(806) 743-9911
Aerocare - Lubbock, TX	(806) 747-8923
Med Flight Air Amb - Albuquerque, NM	(575) 842-4433
Lifeguard Air Med Svc. Albuquerque, NM	(575) 272-3115

Prepared in conjunction with
Dave Small





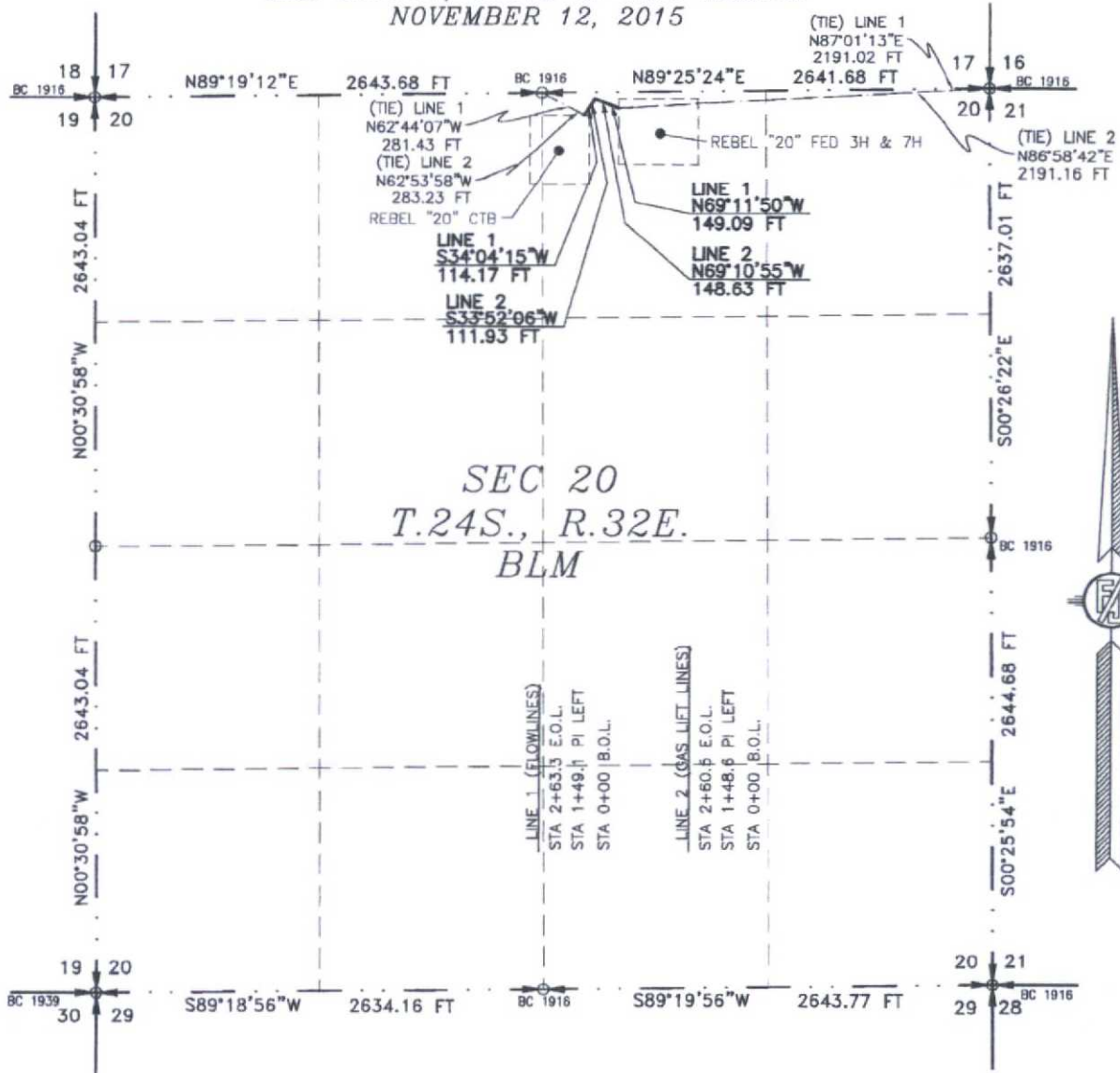
Devon Energy - Well Pad Rig Location Layout Safety Equipment Location



FLOWLINE PLAT (400593XYZ)

TWO 6" BURIED FIBER FLOWLINES AND TWO 6" BURIED FIBER GAS LIFT LINES (IN SAME TRENCH)
FROM THE REBEL "20" FED 3H & 7H TO THE REBEL "20" CTB

DEVON ENERGY PRODUCTION COMPANY, L.P.
CENTERLINE SURVEY OF A PIPELINE CROSSING
SECTION 20, TOWNSHIP 24 SOUTH, RANGE 32 EAST, N.M.P.M.
LEA COUNTY, STATE OF NEW MEXICO
NOVEMBER 12, 2015



SEE NEXT SHEET (2-4) FOR DESCRIPTION



GENERAL NOTES

- 1.) THE INTENT OF THIS ROUTE SURVEY IS TO ACQUIRE AN EASEMENT.
- 2.) BASIS OF BEARING IS NMSP EAST MODIFIED TO SURFACE COORDINATES.

SURVEYOR CERTIFICATE

I, FILMON F. JARAMILLO, A NEW MEXICO PROFESSIONAL SURVEYOR NO. 12797, HEREBY CERTIFY THAT I HAVE CONDUCTED AND AM RESPONSIBLE FOR THIS SURVEY, THAT THIS SURVEY IS TRUE AND CORRECT TO THE BEST OF MY KNOWLEDGE AND BELIEF, AND THAT THIS SURVEY AND PLAT MEET THE MINIMUM STANDARDS FOR LAND SURVEYING IN THE STATE OF NEW MEXICO.

IN WITNESS WHEREOF, THIS CERTIFICATE IS EXECUTED AT CARLSBAD, NEW MEXICO, THIS 16 DAY OF NOVEMBER 2015

FILMON F. JARAMILLO, A NEW MEXICO PROFESSIONAL SURVEYOR NO. 12797, MADRON SURVEYING, INC. 301 SOUTH CANAL, CARLSBAD, NEW MEXICO 88220 Phone (575) 234-3341

SHEET: 1-4

MADRON SURVEYING, INC. 301 SOUTH CANAL, CARLSBAD, NEW MEXICO

SURVEY NO. 4322

FLOWLINE PLAT (400593XYZ)

**TWO 6" BURIED FIBER FLOWLINES AND TWO 6" BURIED FIBER GAS LIFT LINES (IN SAME TRENCH)
FROM THE REBEL "20" FED 3H & 7H TO THE REBEL "20" CTB**

**DEVON ENERGY PRODUCTION COMPANY, L.P.
CENTERLINE SURVEY OF A PIPELINE CROSSING
SECTION 20, TOWNSHIP 24 SOUTH, RANGE 32 EAST, N.M.P.M.
LEA COUNTY, STATE OF NEW MEXICO
NOVEMBER 12, 2015**

DESCRIPTION

A STRIP OF LAND 30 FEET WIDE CROSSING BUREAU OF LAND MANAGEMENT LAND IN SECTION 20, TOWNSHIP 24 SOUTH, RANGE 32 EAST, N.M.P.M., LEA COUNTY, STATE OF NEW MEXICO AND BEING 15 FEET EACH SIDE OF THE FOLLOWING DESCRIBED CENTERLINE SURVEY:

LINE 1 TWO 6" BURIED FIBER FLOWLINES

BEGINNING AT A POINT WITHIN THE NW/4 NE/4 OF SAID SECTION 20, TOWNSHIP 24 SOUTH, RANGE 32 EAST, N.M.P.M., WHENCE THE NORTHEAST CORNER OF SAID SECTION 20, TOWNSHIP 24 SOUTH, RANGE 32 EAST, N.M.P.M. BEARS N87°01'13"E, A DISTANCE OF 2191.02 FEET;

THENCE N69°11'50"W A DISTANCE OF 149.09 FEET TO AN ANGLE POINT OF THE LINE HEREIN DESCRIBED;

THENCE S33°04'15"W A DISTANCE OF 114.17 FEET THE TERMINUS OF THIS CENTERLINE SURVEY, WHENCE THE NORTH QUARTER CORNER OF SAID SECTION 20, TOWNSHIP 24 SOUTH, RANGE 32 EAST, N.M.P.M. BEARS N62°44'07"W, A DISTANCE OF 281.43 FEET;

SAID STRIP OF LAND BEING 263.26 FEET OR 15.96 RODS IN LENGTH, CONTAINING 0.181 ACRES MORE OR LESS AND BEING ALLOCATED BY FORTIES AS FOLLOWS:

NW/4 NE/4 263.26 L.F. 15.96 RODS 0.181 ACRES

LINE 2 TWO 6" BURIED FIBER GAS LIFT LINES

BEGINNING AT A POINT WITHIN THE NW/4 NE/4 OF SAID SECTION 20, TOWNSHIP 24 SOUTH, RANGE 32 EAST, N.M.P.M., WHENCE THE NORTHEAST CORNER OF SAID SECTION 20, TOWNSHIP 24 SOUTH, RANGE 32 EAST, N.M.P.M. BEARS N86°58'42"E, A DISTANCE OF 2191.16 FEET;

THENCE N69°10'55"W A DISTANCE OF 148.63 FEET TO AN ANGLE POINT OF THE LINE HEREIN DESCRIBED;

THENCE S33°52'06"W A DISTANCE OF 111.93 FEET THE TERMINUS OF THIS CENTERLINE SURVEY, WHENCE THE NORTH QUARTER CORNER OF SAID SECTION 20, TOWNSHIP 24 SOUTH, RANGE 32 EAST, N.M.P.M. BEARS N62°53'58"W, A DISTANCE OF 283.23 FEET;

SAID STRIP OF LAND BEING 260.56 FEET OR 15.79 RODS IN LENGTH, CONTAINING 0.179 ACRES MORE OR LESS AND BEING ALLOCATED BY FORTIES AS FOLLOWS:

NW/4 NE/4 260.56 L.F. 15.79 RODS 0.179 ACRES

SURVEYOR CERTIFICATE

I, FILIMON F. JARAMILLO, A NEW MEXICO PROFESSIONAL SURVEYOR NO. 12797, HEREBY CERTIFY THAT I HAVE CONDUCTED AND AM RESPONSIBLE FOR THIS SURVEY, THAT THIS SURVEY IS TRUE AND CORRECT TO THE BEST OF MY KNOWLEDGE AND BELIEF, AND THAT THIS SURVEY AND PLAT MEET THE MINIMUM STANDARDS FOR LAND SURVEYING IN THE STATE OF NEW MEXICO.

IN WITNESS WHEREOF, THIS CERTIFICATE IS EXECUTED AT CARLSBAD,

NEW MEXICO, THIS 12 DAY OF NOVEMBER 2015

GENERAL NOTES

1.) THE INTENT OF THIS ROUTE SURVEY IS TO ACQUIRE AN EASEMENT.

2.) BASIS OF BEARING IS NMSP EAST MODIFIED TO SURFACE COORDINATES.

SHEET: 2-4

MADRON SURVEYING, INC. 301 SOUTH CANAL CARLSBAD, NEW MEXICO (575) 234-3341

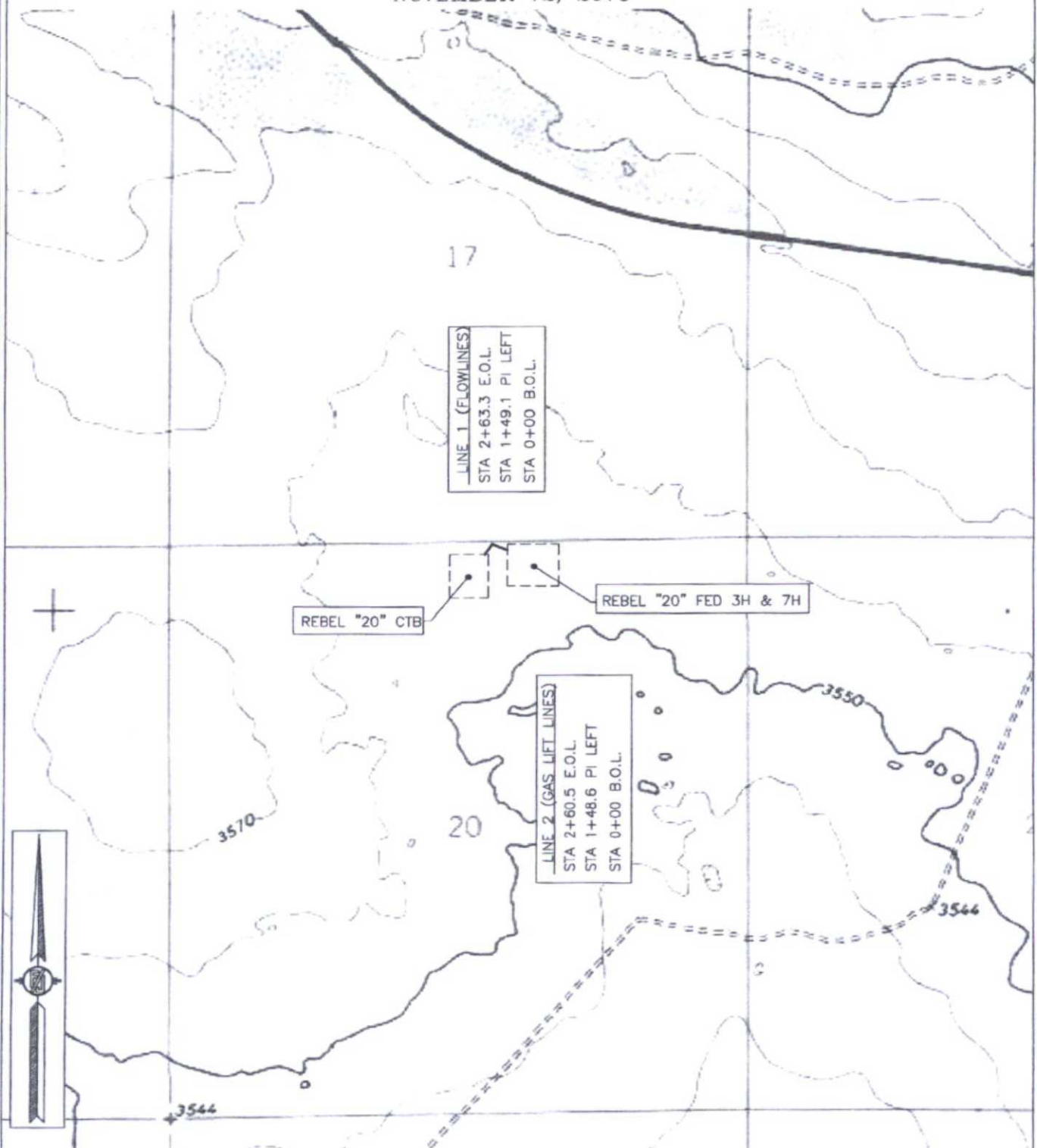
MADRON SURVEYING, INC.
301 SOUTH CANAL
CARLSBAD, NEW MEXICO 88220
Phone (575) 234-3341

SURVEY NO. 4322

FLOWLINE PLAT (400593XYZ)

TWO 6" BURIED FIBER FLOWLINES AND TWO 6" BURIED FIBER GAS LIFT LINES (IN SAME TRENCH)
FROM THE REBEL "20" FED 3H & 7H TO THE REBEL "20" CTB

DEVON ENERGY PRODUCTION COMPANY, L.P.
CENTERLINE SURVEY OF A PIPELINE CROSSING
SECTION 20, TOWNSHIP 24 SOUTH, RANGE 32 EAST, N.M.P.M.
LEA COUNTY, STATE OF NEW MEXICO
NOVEMBER 12, 2015



SHEET: 3-4

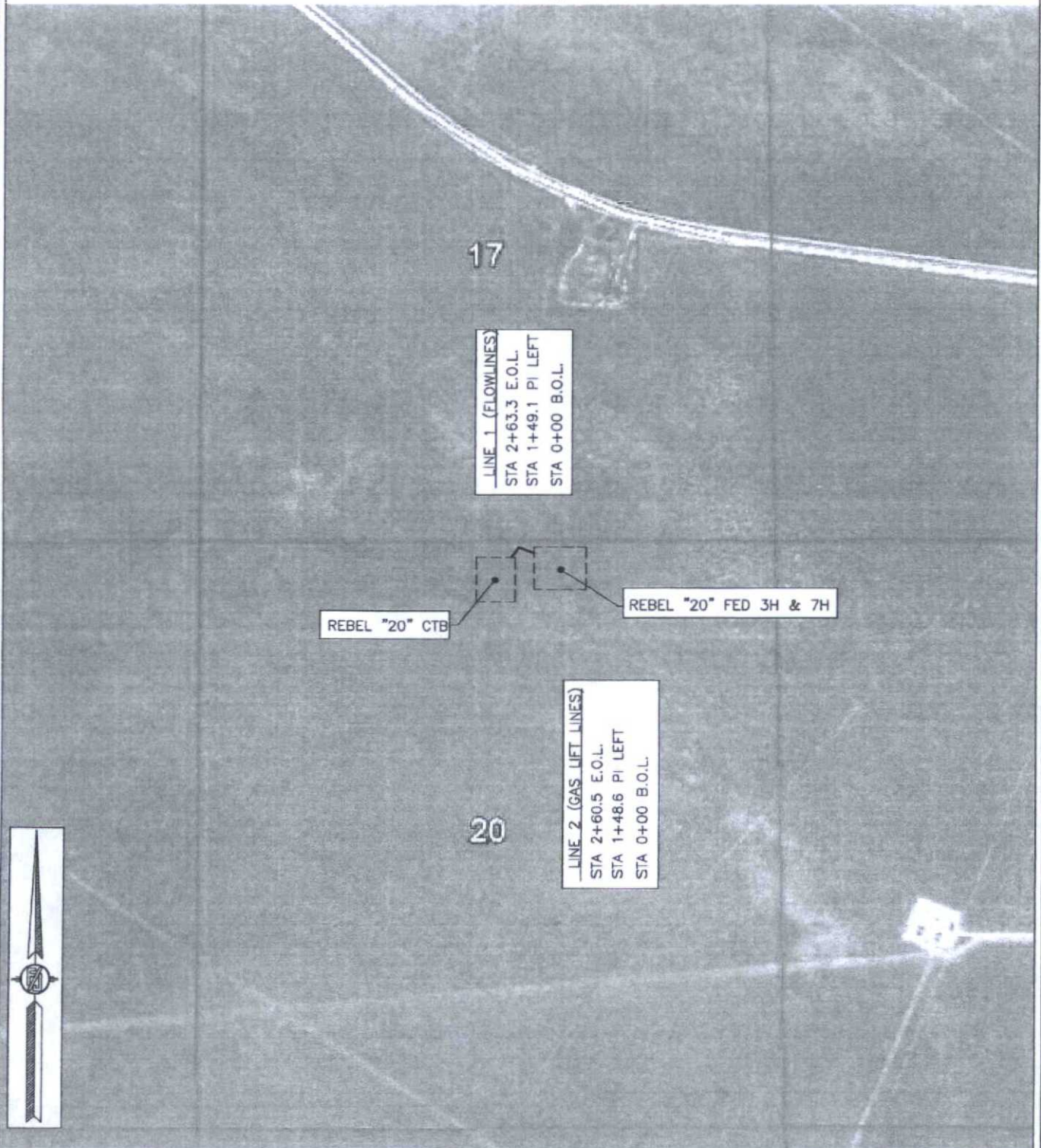
SURVEY NO. 4322

MADRON SURVEYING, INC. 301 SOUTH CANAL CARLSBAD, NEW MEXICO
(575) 234-3341

FLOWLINE PLAT (400593XYZ)

**TWO 6" BURIED FIBER FLOWLINES AND TWO 6" BURIED FIBER GAS LIFT LINES (IN SAME TRENCH)
FROM THE REBEL "20" FED 3H & 7H TO THE REBEL "20" CTB**

**DEVON ENERGY PRODUCTION COMPANY, L.P.
CENTERLINE SURVEY OF A PIPELINE CROSSING
SECTION 20, TOWNSHIP 24 SOUTH, RANGE 32 EAST, N.M.P.M.
LEA COUNTY, STATE OF NEW MEXICO
NOVEMBER 12, 2015**



SHEET: 4-4

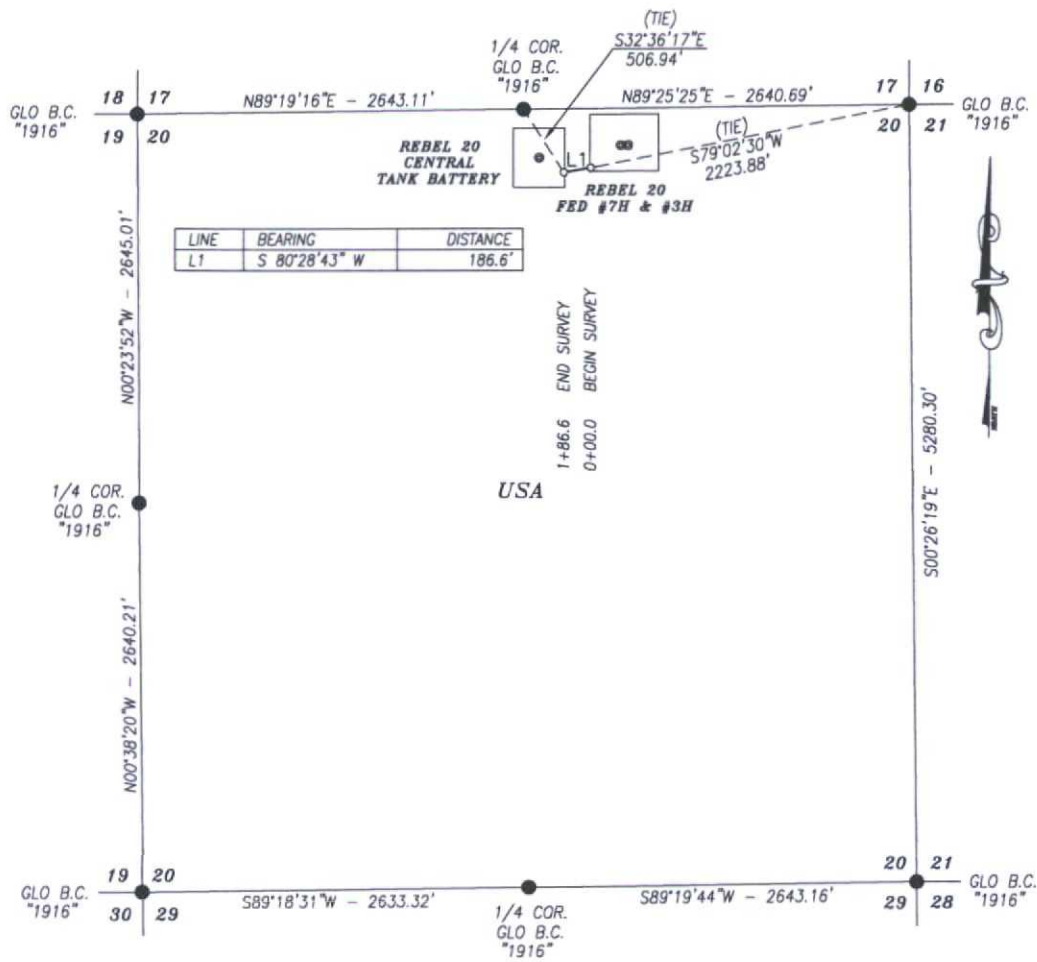
MADRON SURVEYING, INC.

301 SOUTH CANAL
(575) 234-3341

CARLSBAD, NEW MEXICO

SURVEY NO. 4322

FLOW LINE PLAT
DEVON ENERGY PRODUCTION CO. L.P.
 2 - 6" BURIED FIBER PIPE FLOW FROM THE REBEL 20 FED #3H & 7H TO
 REBEL CENTRAL TANK BATTERY IN
SECTION 20, TOWNSHIP 24 SOUTH, RANGE 32 EAST, N.M.P.M.,
 LEA COUNTY, NEW MEXICO.



DESCRIPTION

A STRIP OF LAND 30.0 FEET WIDE AND 186.6 FEET OR 11.31 RODS OR 0.035 MILES IN LENGTH CROSSING USA LAND IN SECTION 20, TOWNSHIP 24 SOUTH, RANGE 32 EAST, LEA COUNTY, NEW MEXICO AND BEING 15.0 FEET LEFT AND 15.0 FEET RIGHT OF THE ABOVE PLATTED CENTERLINE SURVEY.

BASIS OF BEARING:

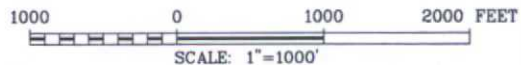
BEARINGS SHOWN HEREON ARE MERCATOR GRID AND CONFORM TO THE NEW MEXICO COORDINATE SYSTEM "NEW MEXICO EAST ZONE" NORTH AMERICAN DATUM 1983. DISTANCES ARE GRID VALUES.

CERTIFICATION

I, CHAD HARCROW, A NEW MEXICO REGISTERED PROFESSIONAL SURVEYOR CERTIFY THAT I DIRECTED AND AM RESPONSIBLE FOR THIS SURVEY, THAT THIS SURVEY IS TRUE AND CORRECT TO THE BEST OF MY KNOWLEDGE AND BELIEF, AND THIS SURVEY AND PLAT MEET THE MINIMUM STANDARDS FOR SURVEYING IN NEW MEXICO.

HARCROW SURVEYING, LLC

2314 W. MAIN ST. ARTESIA, N.M. 88210
 PH: (575) 746-2158 FAX: (575) 746-2158
 c.harcrow@harcrowsurveying.com



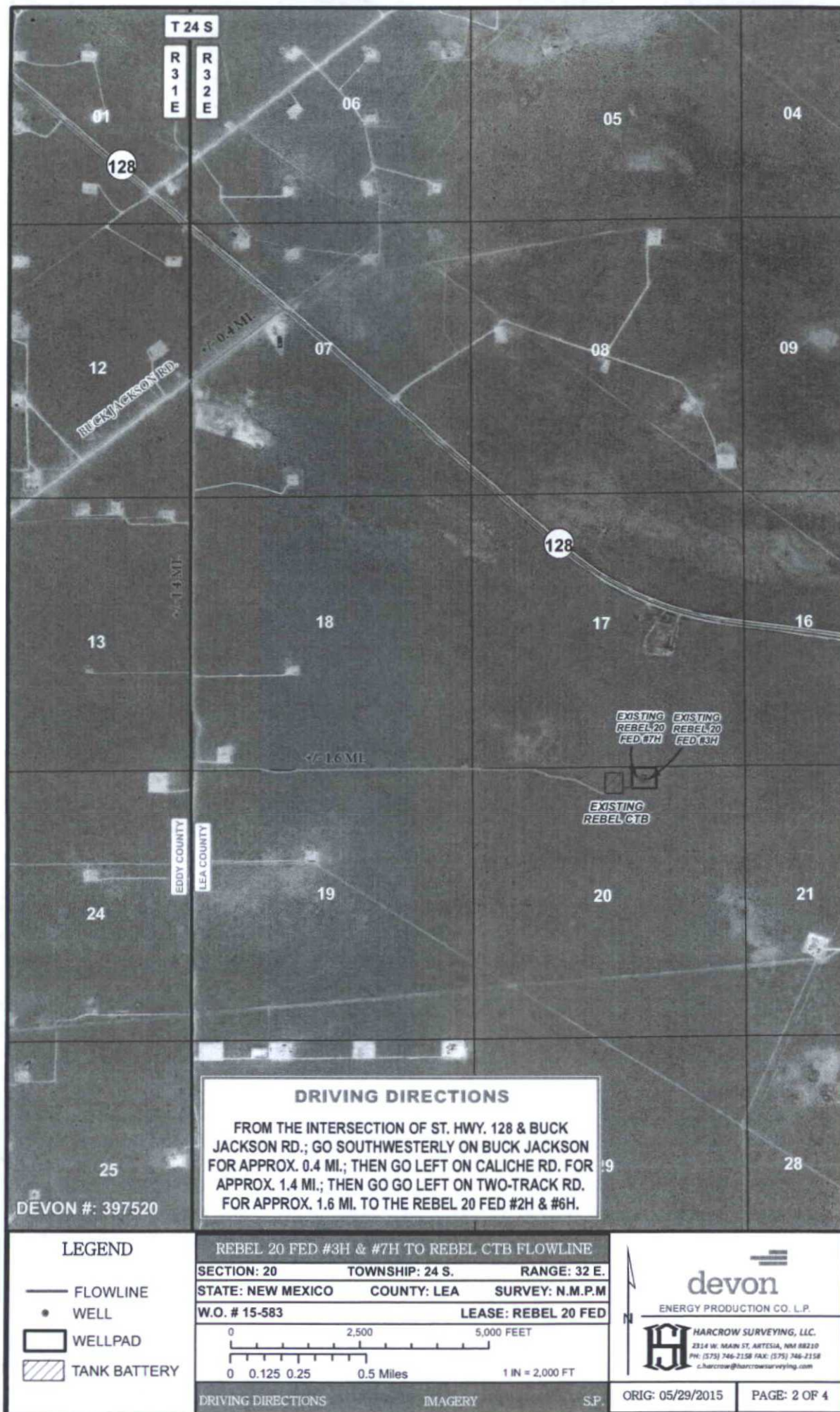
Chad Harcrow
 CHAD HARCROW N.M.P.S. NO. 17777

6/1/15
 DATE

DEVON ENERGY PRODUCTION CO. L.P.



SURVEY OF A PROPOSED FLOW LINE LOCATED IN
 SECTION 20, TOWNSHIP 24 SOUTH, RANGE 32 EAST,
 LEA COUNTY, NMPM, NEW MEXICO

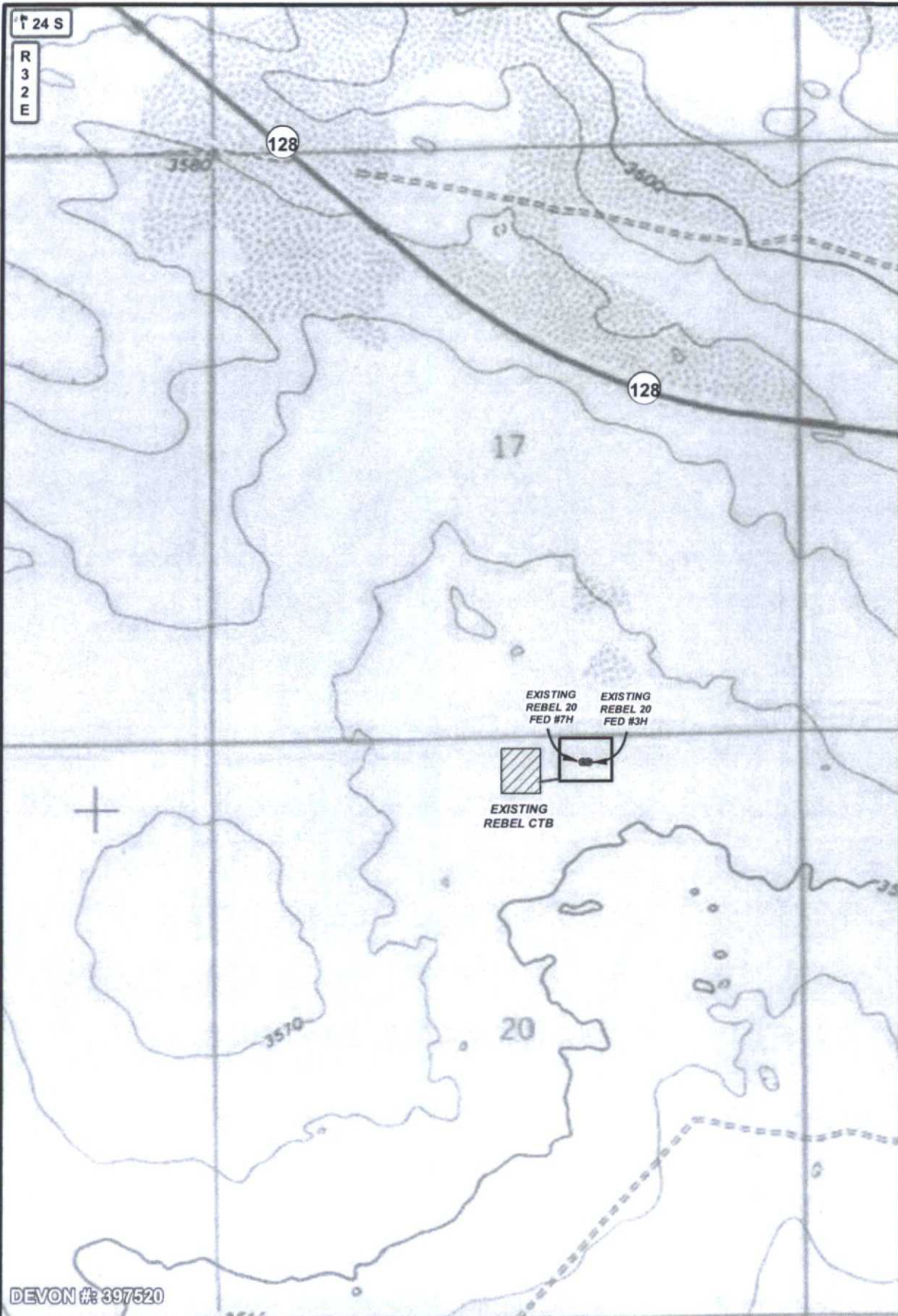
SURVEY DATE: MAY 21, 2015	DEVON #: 397520
DRAFTING DATE: MAY 28, 2015	PAGE 1 OF 4
APPROVED BY: CH	DRAWN BY: VD FILE: 15-583





DEVON #: 397520

<p>LEGEND</p> <p>— FLOWLINE</p> <p>• WELL</p> <p>□ WELLPAD</p> <p>▨ TANK BATTERY</p>	<p>REBEL 20 FED #3H & #7H TO REBEL CTB FLOWLINE</p> <p>SECTION: 20 TOWNSHIP: 24 S. RANGE: 32 E.</p> <p>STATE: NEW MEXICO COUNTY: LEA SURVEY: N.M.P.M</p> <p>W.O. # 15-583 LEASE: REBEL 20 FED</p> <p>0 2,500 FEET</p> <p>0 0.05 0.1 0.2 Miles 1 IN = 1,000 FT</p> <p>PIPELINE OVERVIEW IMAGERY S.P.</p>	<p></p> <p>devon</p> <p>ENERGY PRODUCTION CO. L.P.</p> <p> HARCROW SURVEYING, LLC.</p> <p>2314 W. MAIN ST. ARTESIA, NM 88210</p> <p>PH: (575) 746-2158 FAX: (575) 746-2158</p> <p>c.harcrow@harcrowsurveying.com</p> <p>ORIG: 05/29/2015 PAGE: 3 OF 4</p>
---	---	--



DEVON #: 397520

LEGEND

- FLOWLINE
- WELL
- WELLPAD
- ▨ TANK BATTERY
- PRIVATE
- ▨ STATE OF NM
- US BLM

REBEL 20 FED #3H & #7H TO REBEL CTB FLOWLINE

SECTION: 20 TOWNSHIP: 24 S. RANGE: 32 E.

STATE: NEW MEXICO COUNTY: LEA SURVEY: N.M.P.M

W.O. # 15-583

LEASE: REBEL 20 FED

0 2,500 FEET

0 0.05 0.1 0.2 Miles

1 IN = 1,000 FT

PIPELINE OVERVIEW

LAND STATUS

S.P.



devon

ENERGY PRODUCTION CO. L.P.

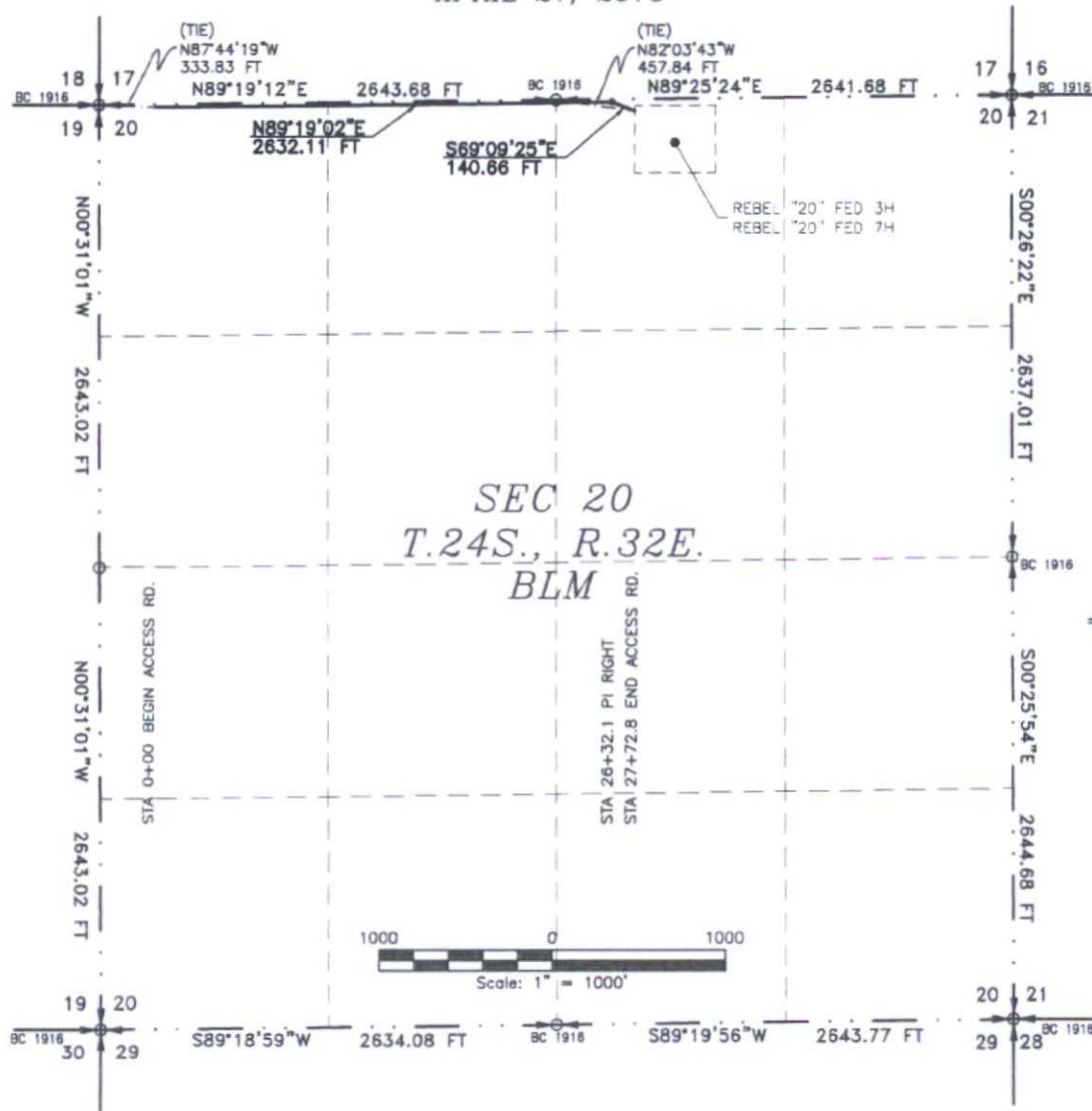


HARCROW SURVEYING, LLC.
2314 W. MAIN ST. ARTESIA, NM 88210
PH: (575) 746-2158 FAX: (575) 746-2158
L.harcrow@harcrowsurveying.com

ORIG: 05/29/2015

PAGE: 4 OF 4

ACCESS ROAD PLAT
 ACCESS ROAD TO THE REBEL "20" FED 3H & THE REBEL "20" FED 7H
DEVON ENERGY PRODUCTION COMPANY, L.P.
 CENTERLINE SURVEY OF AN ACCESS ROAD CROSSING
 SECTION 20, TOWNSHIP 24 SOUTH, RANGE 32 EAST, N.M.P.M.
 LEA COUNTY, STATE OF NEW MEXICO
 APRIL 21, 2015



SEE NEXT SHEET (2-4) FOR DESCRIPTION

SURVEYOR CERTIFICATE

I, FILIMON F. JARAMILLO, A NEW MEXICO PROFESSIONAL SURVEYOR NO. 12797, HEREBY CERTIFY THAT I HAVE CONDUCTED AND AM RESPONSIBLE FOR THIS SURVEY, THAT THIS SURVEY IS TRUE AND CORRECT TO THE BEST OF MY KNOWLEDGE AND BELIEF, AND THAT THIS SURVEY AND PLAT MEET THE MINIMUM STANDARDS FOR LAND SURVEYING IN THE STATE OF NEW MEXICO.

IN WITNESS WHEREOF, THIS CERTIFICATE IS EXECUTED AT CARLSBAD,

NEW MEXICO, THIS 11TH DAY OF MAY 2015

GENERAL NOTES

- 1.) THE INTENT OF THIS ROUTE SURVEY IS TO ACQUIRE AN EASEMENT.
- 2.) BASIS OF BEARING IS NMSP EAST MODIFIED TO SURFACE COORDINATES.

SHEET: 1-4

MADRON SURVEYING, INC. 301 SOUTH CANAL CARLSBAD, NEW MEXICO (575) 234-3341

SURVEY NO. 3962

FILIMON F. JARAMILLO PLS. 12797

ACCESS ROAD PLAT

ACCESS ROAD TO THE REBEL "20" FED 3H & THE REBEL "20" FED 7H

DEVON ENERGY PRODUCTION COMPANY, L.P.
CENTERLINE SURVEY OF AN ACCESS ROAD CROSSING
SECTION 20, TOWNSHIP 24 SOUTH, RANGE 32 EAST, N.M.P.M.
LEA COUNTY, STATE OF NEW MEXICO
APRIL 21, 2015

DESCRIPTION

A STRIP OF LAND 20 FEET WIDE CROSSING BUREAU OF LAND MANAGEMENT LAND IN SECTION 20, TOWNSHIP 24 SOUTH, RANGE 32 EAST, N.M.P.M., LEA COUNTY, STATE OF NEW MEXICO AND BEING 10 FEET EACH SIDE OF THE FOLLOWING DESCRIBED CENTERLINE SURVEY:

BEGINNING AT A POINT WITHIN THE NW/4 NW/4 OF SAID SECTION 20, TOWNSHIP 24 SOUTH, RANGE 32 EAST, N.M.P.M., WHENCE THE NORTHWEST CORNER OF SAID SECTION 20, TOWNSHIP 24 SOUTH, RANGE 32 EAST, N.M.P.M. BEARS N87°44'19"W, A DISTANCE OF 333.83 FEET;

THENCE N89°19'02"E A DISTANCE OF 2632.11 FEET TO AN ANGLE POINT OF THE LINE HEREIN DESCRIBED;

THENCE S69°09'25"E A DISTANCE OF 140.66 FEET THE TERMINUS OF THIS CENTERLINE SURVEY, WHENCE THE NORTH QUARTER CORNER OF SAID SECTION 20, TOWNSHIP 24 SOUTH, RANGE 32 EAST, N.M.P.M. BEARS N82°03'43"W, A DISTANCE OF 457.84 FEET;

SAID STRIP OF LAND BEING 2772.77 FEET OR 168.04 RODS IN LENGTH, CONTAINING 1.273 ACRES MORE OR LESS AND BEING ALLOCATED BY FORTIES AS FOLLOWS:

NW/4 NW/4	988.38 L.F.	59.90 RODS	0.454 ACRES
NE/4 NW/4	1321.82 L.F.	80.11 RODS	0.607 ACRES
NW/4 NE/4	462.57 L.F.	28.03 RODS	0.212 ACRES

SURVEYOR CERTIFICATE

I, FILIMON F. JARAMILLO, A NEW MEXICO PROFESSIONAL SURVEYOR NO. 12797, HEREBY CERTIFY THAT I HAVE CONDUCTED AND AM RESPONSIBLE FOR THIS SURVEY, THAT THIS SURVEY IS TRUE AND CORRECT TO THE BEST OF MY KNOWLEDGE AND BELIEF, AND THAT THIS SURVEY AND PLAT MEET THE MINIMUM STANDARDS FOR LAND SURVEYING IN THE STATE OF NEW MEXICO.

IN WITNESS WHEREOF, THIS CERTIFICATE IS EXECUTED AT CARLSBAD,

NEW MEXICO, THIS 11 DAY OF MAY 2015

GENERAL NOTES

- 1.) THE INTENT OF THIS ROUTE SURVEY IS TO ACQUIRE AN EASEMENT.
- 2.) BASIS OF BEARING IS NMSP EAST MODIFIED TO SURFACE COORDINATES.

MADRON SURVEYING, INC.
381 SOUTH CANAL
CARLSBAD, NEW MEXICO 88220
Phone (575) 234-3341

SHEET: 2-4

MADRON SURVEYING, INC.

381 SOUTH CANAL
(575) 234-3341

FILIMON F. JARAMILLO PLS 12797

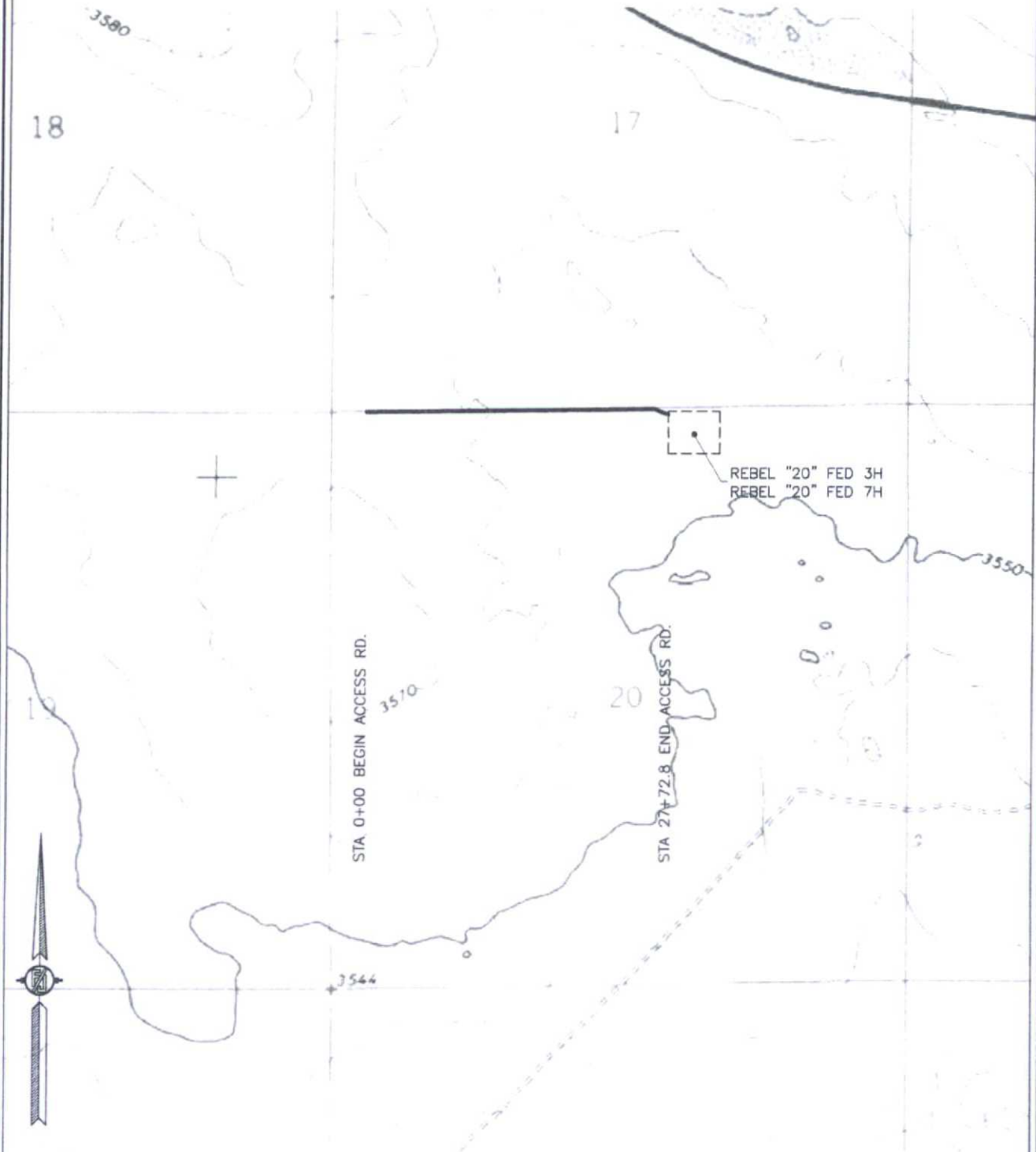
SURVEY NO. 3962

CARLSBAD, NEW MEXICO

ACCESS ROAD PLAT

ACCESS ROAD TO THE REBEL "20" FED 3H & THE REBEL "20" FED 7H

DEVON ENERGY PRODUCTION COMPANY, L.P.
CENTERLINE SURVEY OF AN ACCESS ROAD CROSSING
SECTION 20, TOWNSHIP 24 SOUTH, RANGE 32 EAST, N.M.P.M.
LEA COUNTY, STATE OF NEW MEXICO
APRIL 21, 2015



SHEET: 3-4

MADRON SURVEYING, INC.

301 SOUTH CANAL
(575) 234-3341

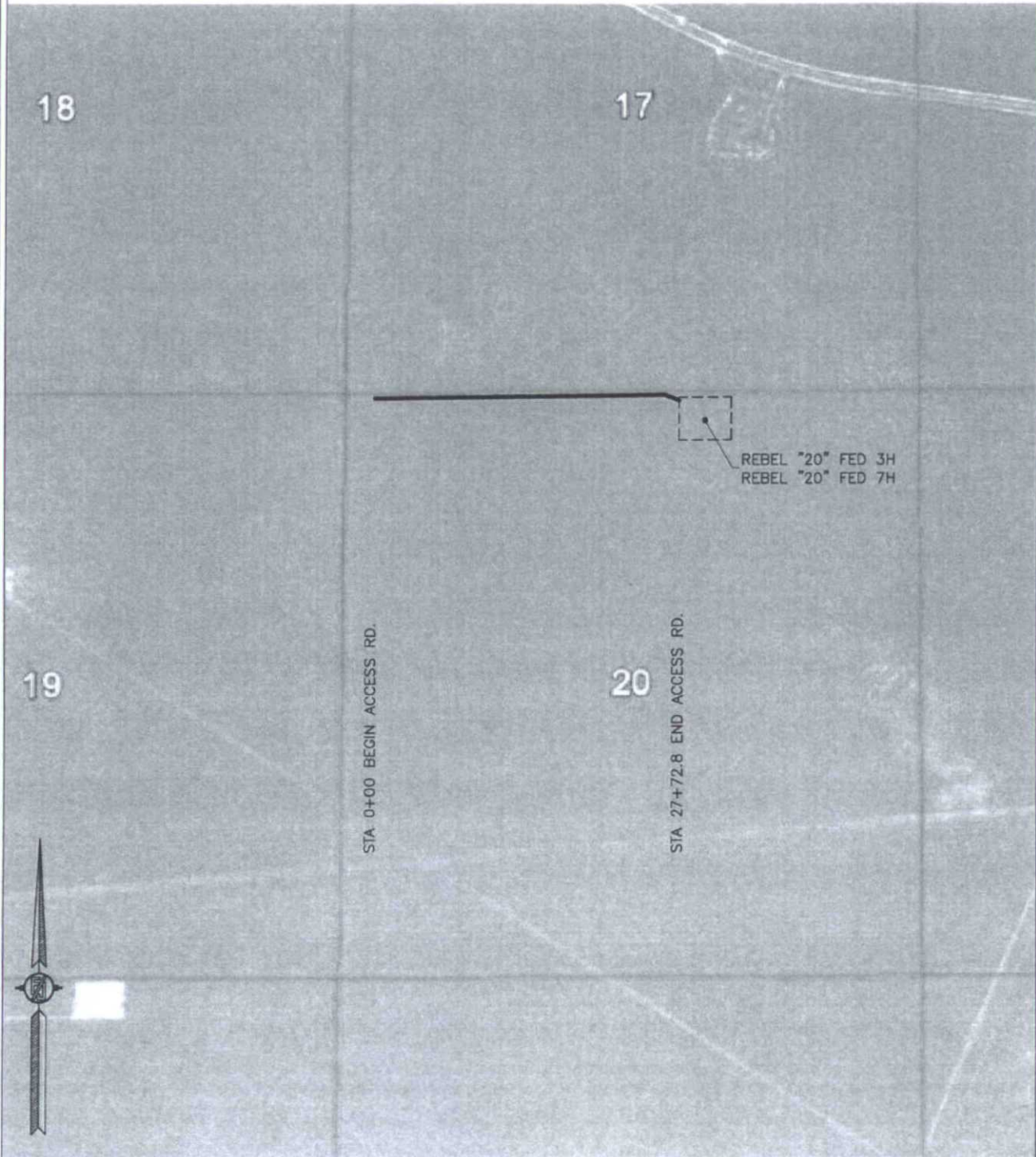
CARLSBAD, NEW MEXICO

SURVEY NO. 3962

ACCESS ROAD PLAT

ACCESS ROAD TO THE REBEL "20" FED 3H & THE REBEL "20" FED 7H

DEVON ENERGY PRODUCTION COMPANY, L.P.
CENTERLINE SURVEY OF AN ACCESS ROAD CROSSING
SECTION 20, TOWNSHIP 24 SOUTH, RANGE 32 EAST, N.M.P.M.
LEA COUNTY, STATE OF NEW MEXICO
APRIL 21, 2015



SHEET: 4-4

SURVEY NO. 3962

MADRON SURVEYING, INC. 301 SOUTH CANAL CARLSBAD, NEW MEXICO
(575) 234-3341