

District I  
1625 N. French Dr., Hobbs, NM 88240  
Phone: (575) 393-6161 Fax: (575) 393-0720  
District II  
811 S. First St., Artesia, NM 88210  
Phone: (575) 748-1283 Fax: (575) 748-9720  
District III  
1000 Rio Brazos Road, Aztec, NM 87410  
Phone: (505) 334-6178 Fax: (505) 334-6170  
District IV  
1220 S. St. Francis Dr., Santa Fe, NM 87505  
Phone: (505) 476-3460 Fax: (505) 476-3462

State of New Mexico  
Energy, Minerals & Natural Resources Department  
OIL CONSERVATION DIVISION  
1220 South St. Francis Dr.  
Santa Fe, NM 87505

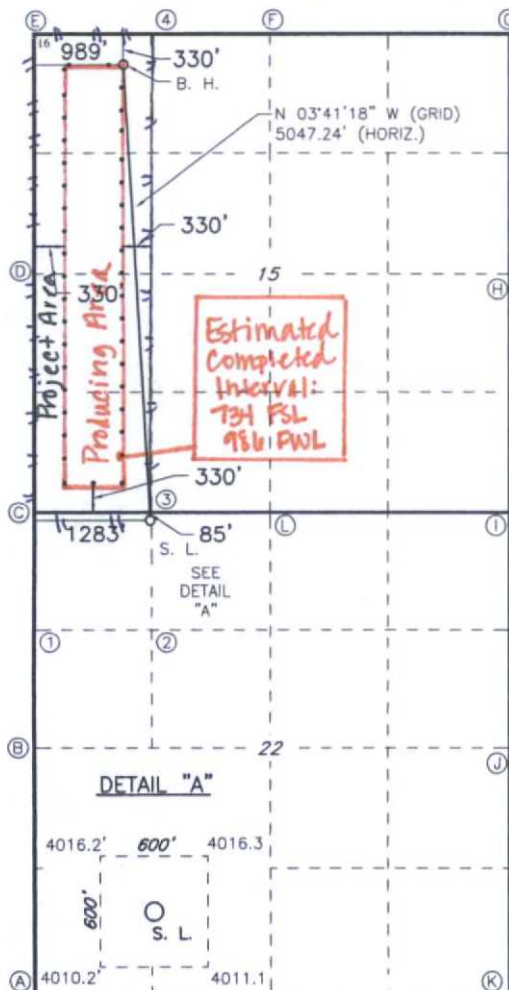
Form C-102  
Revised August 1, 2011  
Submit one copy to appropriate  
District Office

☐ AMENDED REPORT

WELL LOCATION AND ACREAGE DEDICATION PLAT

1 API Number <b>30-025-42997</b>		2 Pool Code <b>44500</b>		3 Pool Name <b>Maljamar; Yeso West</b>	
4 Property Code <b>314751</b>		5 Property Name <b>IVAR THE BONELESS FED</b>			
7 OGRID NO. <b>229137</b>		8 Operator Name <b>COG OPERATING, LLC</b>			
		9 Elevation <b>4015'</b>			
10 Surface Location					
UL or lot no. <b>D</b>	Section <b>22</b>	Township <b>17S</b>	Range <b>32E</b>	Lot Idn <b>85</b>	Feet from the <b>1283</b>
		North/South line <b>NORTH</b>		East/West line <b>WEST</b>	
County <b>LEA</b>					
11 Bottom Hole Location If Different From Surface					
UL or lot no. <b>D</b>	Section <b>15</b>	Township <b>17S</b>	Range <b>32E</b>	Lot Idn <b>330</b>	Feet from the <b>989</b>
		North/South line <b>NORTH</b>		East/West line <b>WEST</b>	
County <b>LEA</b>					
12 Dedicated Acres <b>160</b>		13 Joint or Infill		14 Consolidation Code	
15 Order No.					

No allowable will be assigned to this completion until all interest have been consolidated or a non-standard unit has been approved by the division.



**GEODETIC DATA**  
NAD 27 GRID - NM EAST  
SURFACE LOCATION  
N: 665055.4 - E: 676682.0  
LAT: 32.82700241° N  
LONG: 103.75816341° W  
BOTTOM HOLE  
N: 670090.9 - E: 676357.4  
**CORNER DATA**  
NAD 27 GRID - NM EAST  
A: FOUND 1/2" REBAR  
N: 659858.7 - E: 675431.5  
B: FOUND 2" PIPE  
N: 662496.7 - E: 675414.3  
C: FOUND 1" NAIL  
N: 665135.4 - E: 675398.3  
D: FOUND 2" PIPE  
N: 667777.2 - E: 675381.9  
E: FOUND BRASS CAP "1913"  
N: 670415.5 - E: 675366.5  
F: FOUND BRASS CAP "1913"  
N: 670430.0 - E: 678005.6  
G: FOUND BRASS CAP "1913"  
N: 670433.3 - E: 680638.7  
H: FOUND BRASS CAP "1913"  
N: 667794.8 - E: 680655.1  
I: FOUND BRASS CAP "1913"  
N: 665155.6 - E: 680671.4  
J: FOUND 1/2" REBAR  
N: 662516.2 - E: 680687.3  
K: FOUND BRASS CAP "1913"  
N: 659876.2 - E: 680701.5  
L: FOUND BRASS CAP "1913"  
N: 665145.7 - E: 678029.0

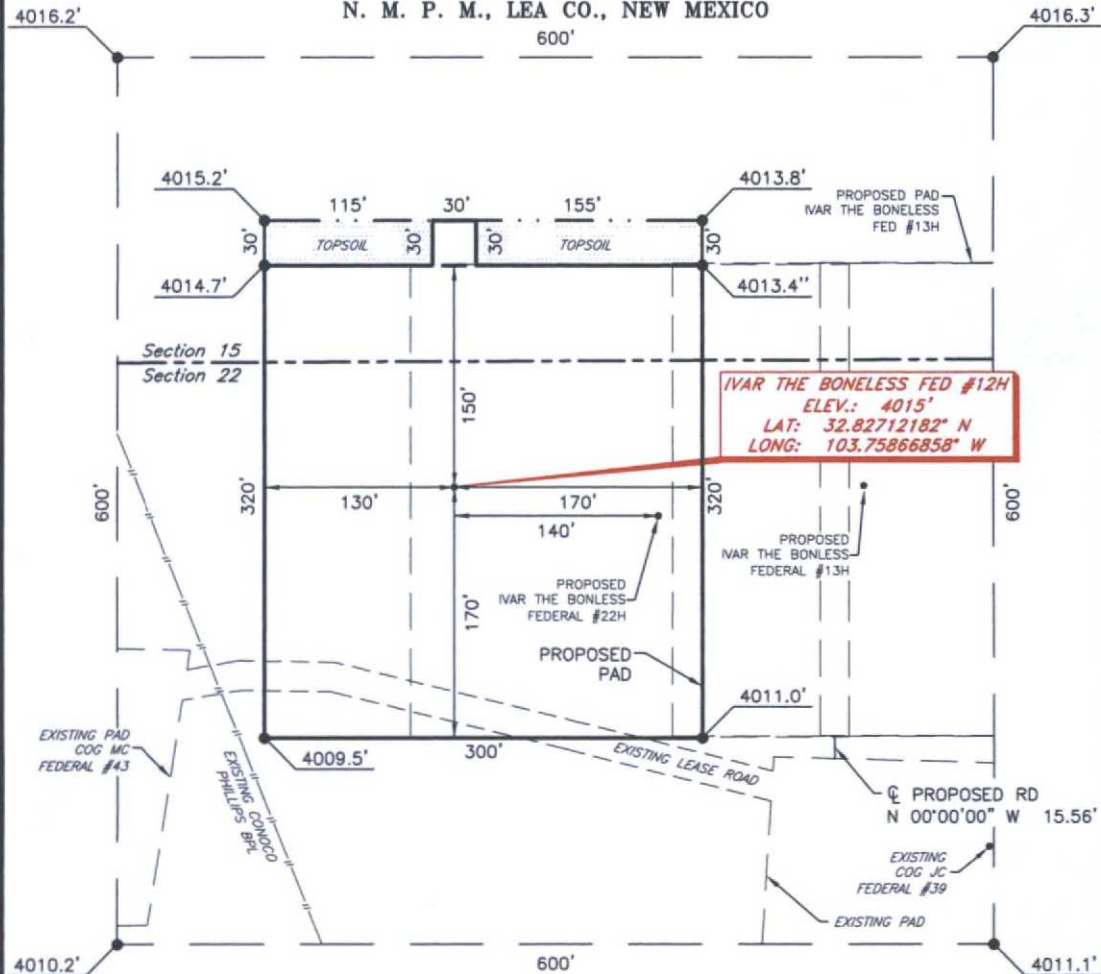
**17 OPERATOR CERTIFICATION**  
I hereby certify that the information contained herein is true and complete to the best of my knowledge and belief, and that this organization either owns a working interest or unleased mineral interest in the land including the proposed bottom hole location or has a right to drill this well at this location pursuant to a contract with an owner of such a mineral or working interest, or to a voluntary pooling agreement or a compulsory pooling order heretofore entered by the division.  
Signature: *Kelly J. Holly*  
Date: **5-12-15**  
Printed Name: **Kelly J. Holly**  
E-mail Address: **kholly@concho.com**

**18 SURVEYOR CERTIFICATION**  
I hereby certify that the well location shown on this plat was plotted from field notes of actual surveys made by me or under my supervision, and that the same is true and correct to the best of my belief.  
Date of Survey: **12-04-2014**  
Signature and Seal of Professional Surveyor: *Robert M. Howett*  
**19680**  
Certificate Number

RRC - Firm No.: TX 10193838 NM 4655451 - Job No.: LS140548

JAN 04 2016

COG OPERATING, LLC  
IVAR THE BONELESS FED #12H  
(85' FNL & 1283' FWL)  
SECTION 22, T17S, R32E  
N. M. P. M., LEA CO., NEW MEXICO



DIRECTIONS TO LOCATION

From the intersection of CR-126 (Conoco Rd.) and CR-126A (Maljamar Rd.)  
Go North on CR-126A approx. 0.6 miles to a lease road on the right;

Turn right and go Southeast approx. 0.3 miles to a lease road;

Turn left and go North approx. 382 feet through existing pad;

Location is 440 feet Northwest of JC Fed #39 pumping unit.

THIS IS NOT A BOUNDARY SURVEY, APPARENT PROPERTY CORNERS AND PROPERTY LINES ARE SHOWN FOR INFORMATION ONLY. BOUNDARY DATA IS SHOWN FROM A PREVIOUS SURVEY REFERENCED HEREON.

I, R. M. Howett, a N. M. Professional Surveyor, hereby certify that I prepared this unclassified survey of a well location plat from an actual survey made on the ground under my direct supervision, said unclassified survey and plat meet the Min. Stds. for Land Surveying in the State of N. M. and are true and correct to the best of my knowledge and belief.

*Robert M. Howett*

Robert M. Howett NM PS 19680

SCALE: 1" = 100'  
0 50 100  
BEARINGS ARE  
NAD 83 GRID - NM EAST  
DISTANCES ARE  
GROUND.

Firm No.: TX 10193838 NM 4655451

Copyright 2014 - All Rights Reserved

NO.	REVISION	DATE
JOB NO.:	LS140548	
DWG. NO.:	140548PAD	

**RRC**

308 W. BROADWAY ST., HOBBS, NM 88240 (575) 964-8200

SCALE: 1" = 100'
DATE: 1-14-2015
SURVEYED BY: IE/DH
DRAWN BY: CMJ
APPROVED BY: RMH
SHEET : 1 OF 1



# VICINITY MAP



*SECTION 22, TWP. 17 SOUTH, RGE. 32 EAST,  
N. M. P. M., LEA CO., NEW MEXICO*

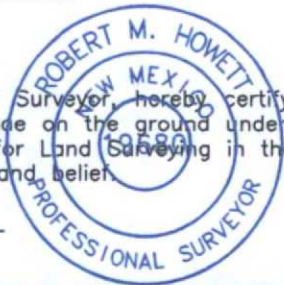
OPERATOR: COG Operating, LLC  
LEASE: Ivar the Boneless Fed  
WELL NO.: 12H

LOCATION: 85' FNL & 1283' FWL  
ELEVATION: 4015'

I, R. M. Howett, a N. M. Professional Surveyor, hereby certify that I prepared this vicinity map exhibit plat from an actual survey made on the ground under my direct supervision, said survey and exhibit plat meet the Min. Stds. for Land Surveying in the State of N. M. and are true and correct to the best of my knowledge and belief.

*Robert M. Howett*

Robert M. Howett NM PS 19680



Firm No.: TX 10193838 NM 4655451

Copyright 2014 - All Rights Reserved

NO.	REVISION	DATE
JOB NO.:	LS140548	
DWG. NO.:	140548VM	

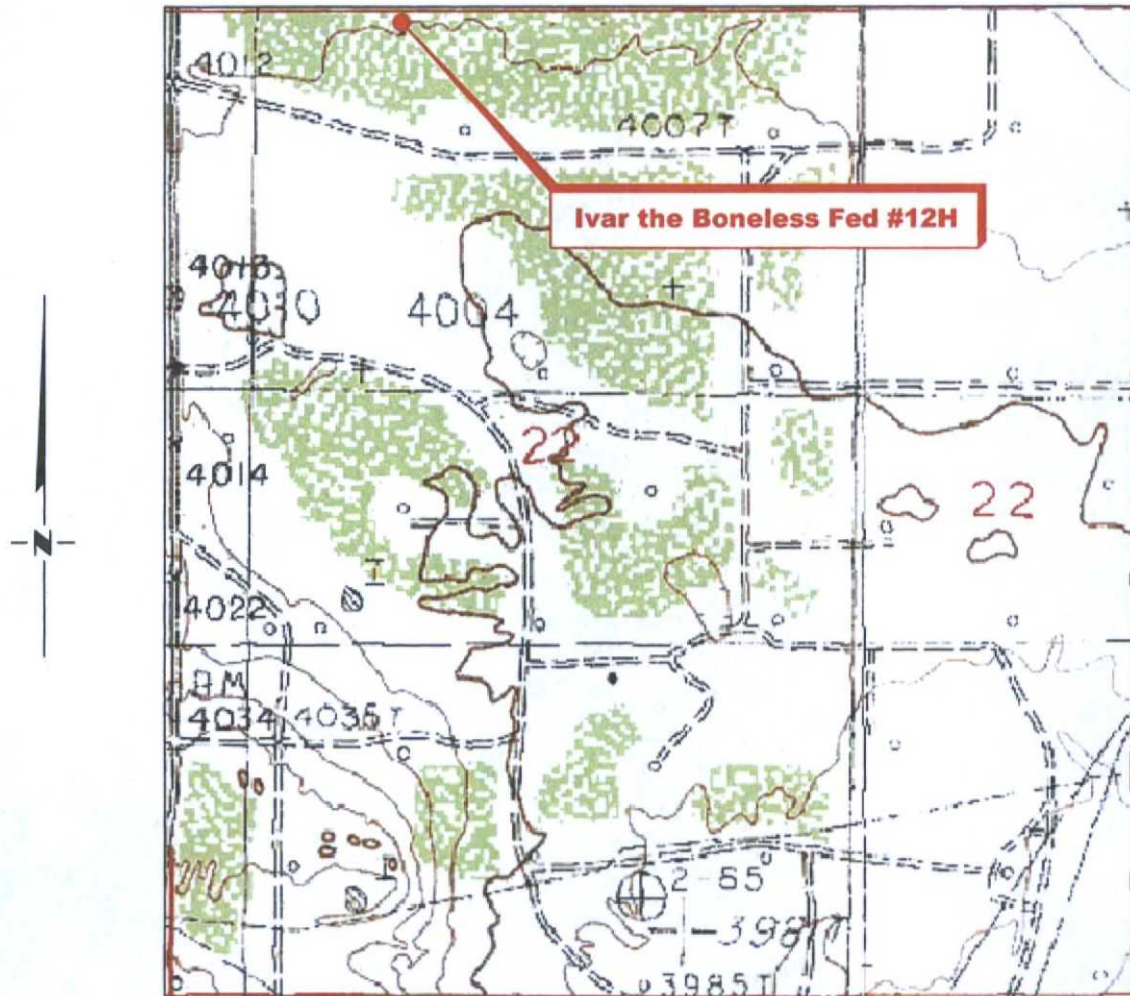
## RRC

308 W. BROADWAY ST., HOBBS, NM 88240 (575) 964-8200

SCALE: NTS
DATE: 1-12-2015
SURVEYED BY: GB/SM
DRAWN BY: CMJ
APPROVED BY: RMH
SHEET : 1 OF 1



# LOCATION VERIFICATION MAP



SECTION 22, TWP. 17 SOUTH, RGE. 32 EAST,  
N. M. P. M., LEA CO., NEW MEXICO

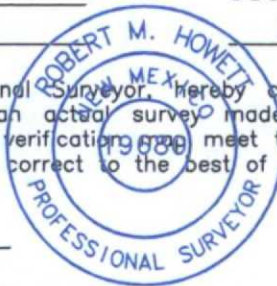
OPERATOR: COG Operating, LLC  
LEASE: Ivar the Boneless Fed  
WELL NO.: 12H  
ELEVATION: 4015'

LOCATION: 85' FNL & 1283' FWL  
CONTOUR INTERVAL:  
USGS TOPO. SOURCE MAP:  
Maljamar (P. E. 1985)

I, R. M. Howett, a N. M. Professional Surveyor, hereby certify that I prepared this location verification map exhibit plat from an actual survey made on the ground under my direct supervision, said survey and location verification map meet the Min. Stds. for Land Surveying in the State of N. M. and are true and correct to the best of my knowledge and belief.

*Robert M. Howett*

Robert M. Howett NM PS 19680



Firm No.: TX 10193838 NM 4655451

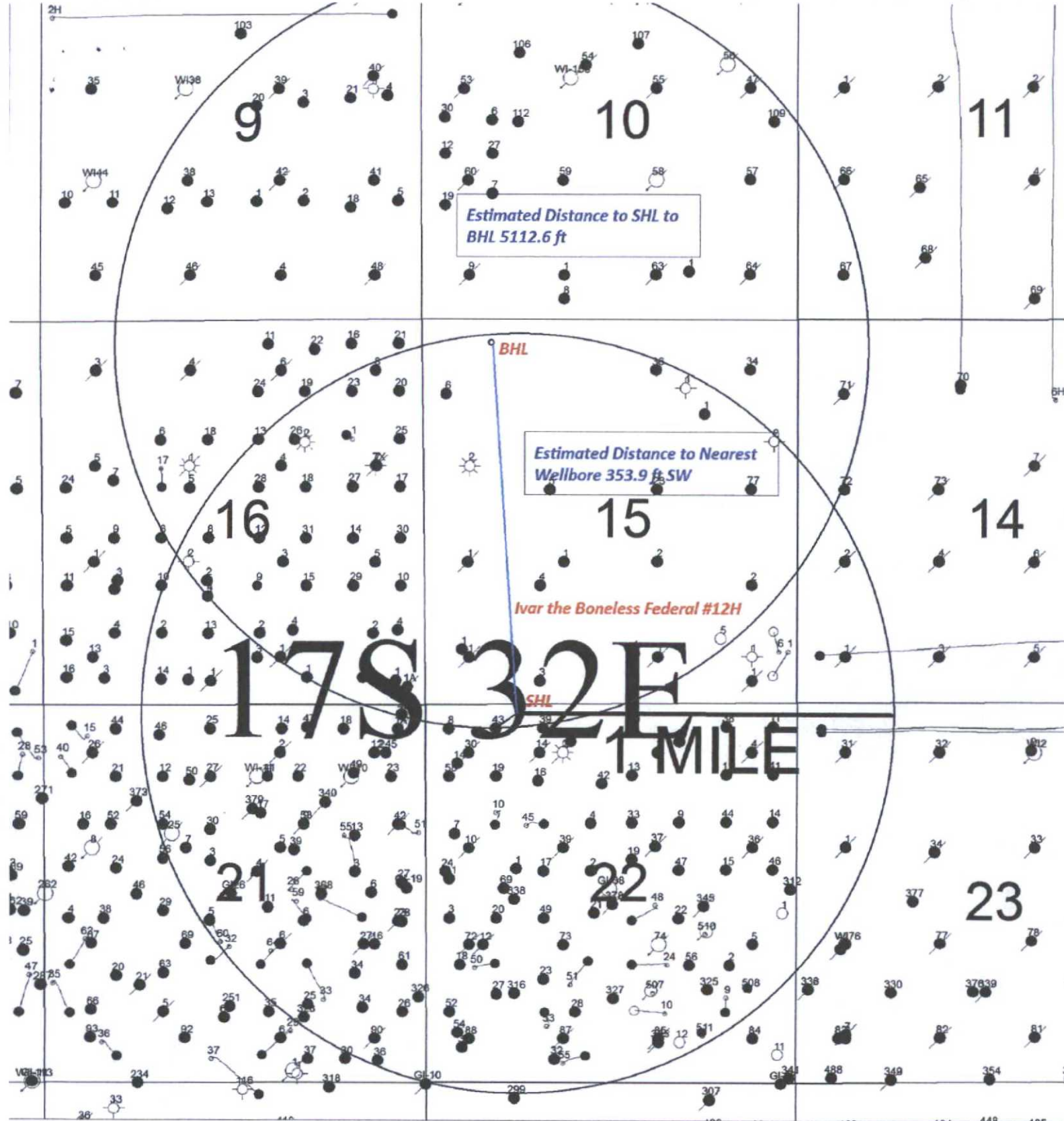
Copyright 2014 - All Rights Reserved

NO.	REVISION	DATE
JOB NO.:	LS140548	
DWG. NO.:	140548VM	

## RRC

308 W. BROADWAY ST., HOBBS, NM 88240 (575) 964-8200

SCALE:	NTS
DATE:	1-12-2015
SURVEYED BY:	GB/SM
DRAWN BY:	CMJ
APPROVED BY:	RMH
SHEET :	1 OF 1



SENM Shelf Area  
Ivar the Boneless Federal #12H

SEC. 22, T17S - R32E SHL 85 FNL 1283 FWL, UNIT D  
SEC. 15, T17S - R32E BHL 330 FNL 989 FWL, UNIT D





Data use subject to license.

© DeLorme. XMap® 7.

www.delorme.com

