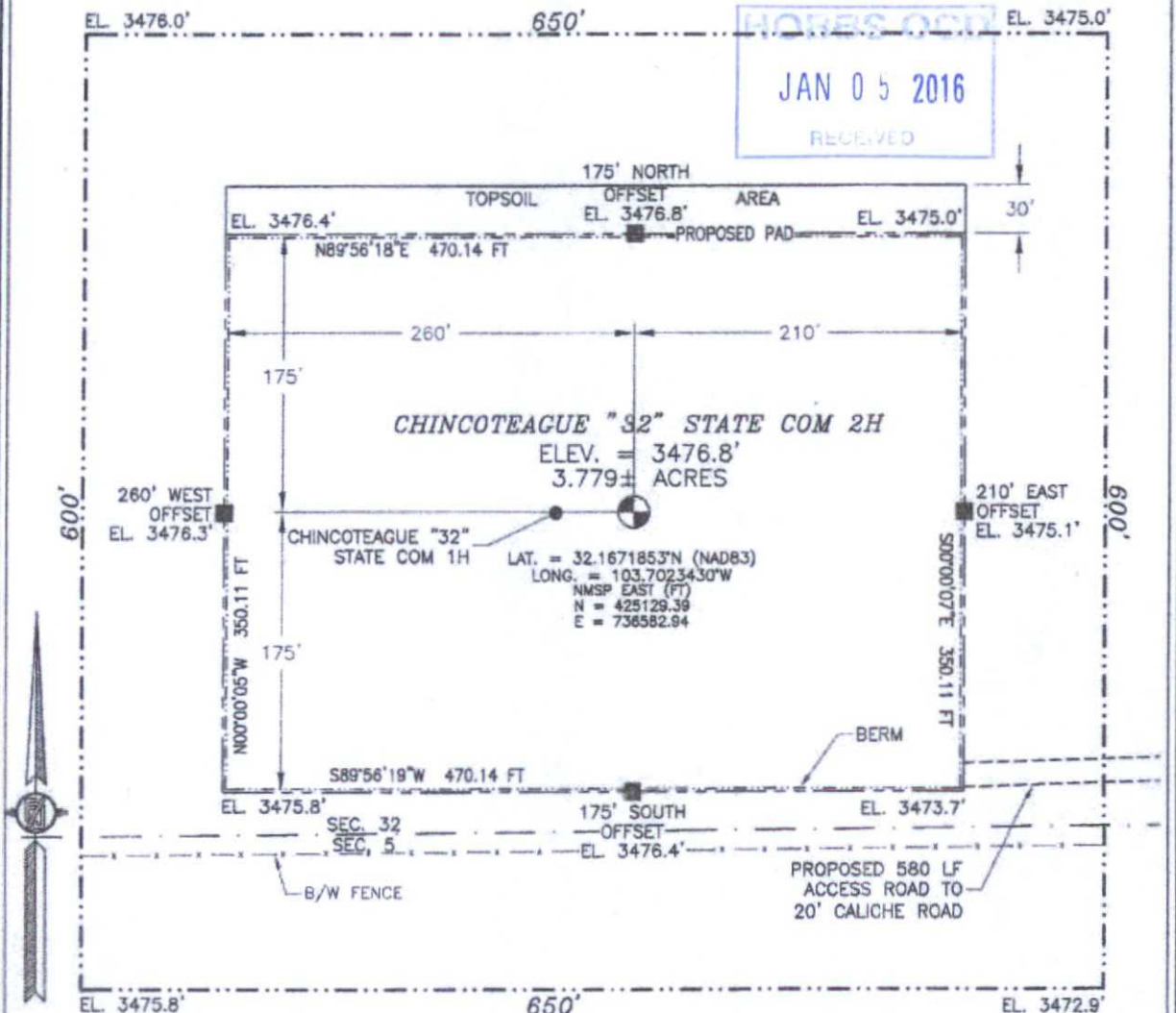


SECTION 32, TOWNSHIP 24 SOUTH, RANGE 32 EAST, N.M.P.M.  
LEA COUNTY, STATE OF NEW MEXICO

SITE MAP

NOTE: LATITUDE AND LONGITUDE COORDINATES ARE SHOWN USING THE NORTH AMERICAN DATUM OF 1983 (NAD83). LISTED NEW MEXICO STATE PLANE EAST COORDINATES ARE GRID (NAD83). BASIS OF BEARING AND DISTANCES USED ARE NEW MEXICO STATE PLANE EAST COORDINATES MODIFIED TO THE SURFACE



010 50 100 200

SCALE 1" = 100'  
DIRECTIONS TO LOCATION

FROM STATE HIGHWAY 128 AND CR 1 (ORLA ROAD) GO SOUTH ON OR 1.24 MILES, TURN RIGHT ON CALICHE ROAD AND GO WEST 1.0 MILES, TURN LEFT AND GO SOUTH 0.5 MILES, BEND RIGHT AND GO WEST 0.1 MILES, BEND LEFT AND GO SOUTHWEST 470', BEND RIGHT AND GO WEST 0.36 MILES, TURN LEFT AND GO SOUTH-SOUTHWEST 0.43 MILES TO A PROPOSED ROAD SURVEY AND FOLLOW FLAGS WEST 580' TO THE PROPOSED SOUTHEAST PAD CORNER FOR THIS LOCATION.

DEVON ENERGY PRODUCTION COMPANY, L.P.  
CHINCOTEAGUE "32" STATE COM 2H  
LOCATED 200 FT. FROM THE SOUTH LINE  
AND 880 FT. FROM THE WEST LINE OF  
SECTION 32, TOWNSHIP 24 SOUTH,  
RANGE 32 EAST, N.M.P.M.  
LEA COUNTY, STATE OF NEW MEXICO

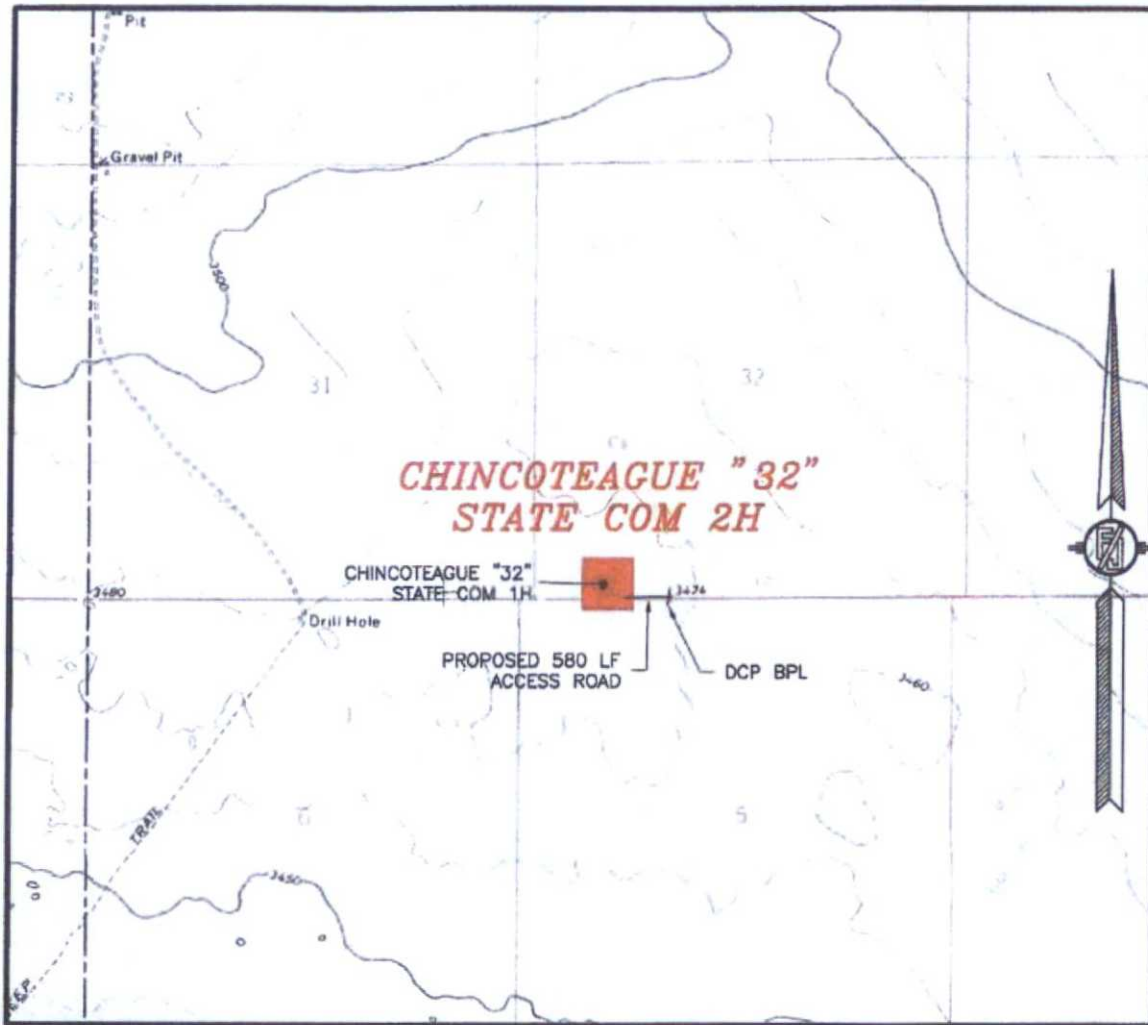
DECEMBER 21, 2015

SURVEY NO. 3344A

MADRON SURVEYING, INC. 301 SOUTH CANAL (575) 234-3341 CARLSBAD, NEW MEXICO

JAN 05 2016

SECTION 32, TOWNSHIP 24 SOUTH, RANGE 32 EAST, N.M.P.M.  
LEA COUNTY, STATE OF NEW MEXICO  
**LOCATION VERIFICATION MAP**



USGS QUAD MAP:  
PADUCA BREAKS NW

NOT TO SCALE

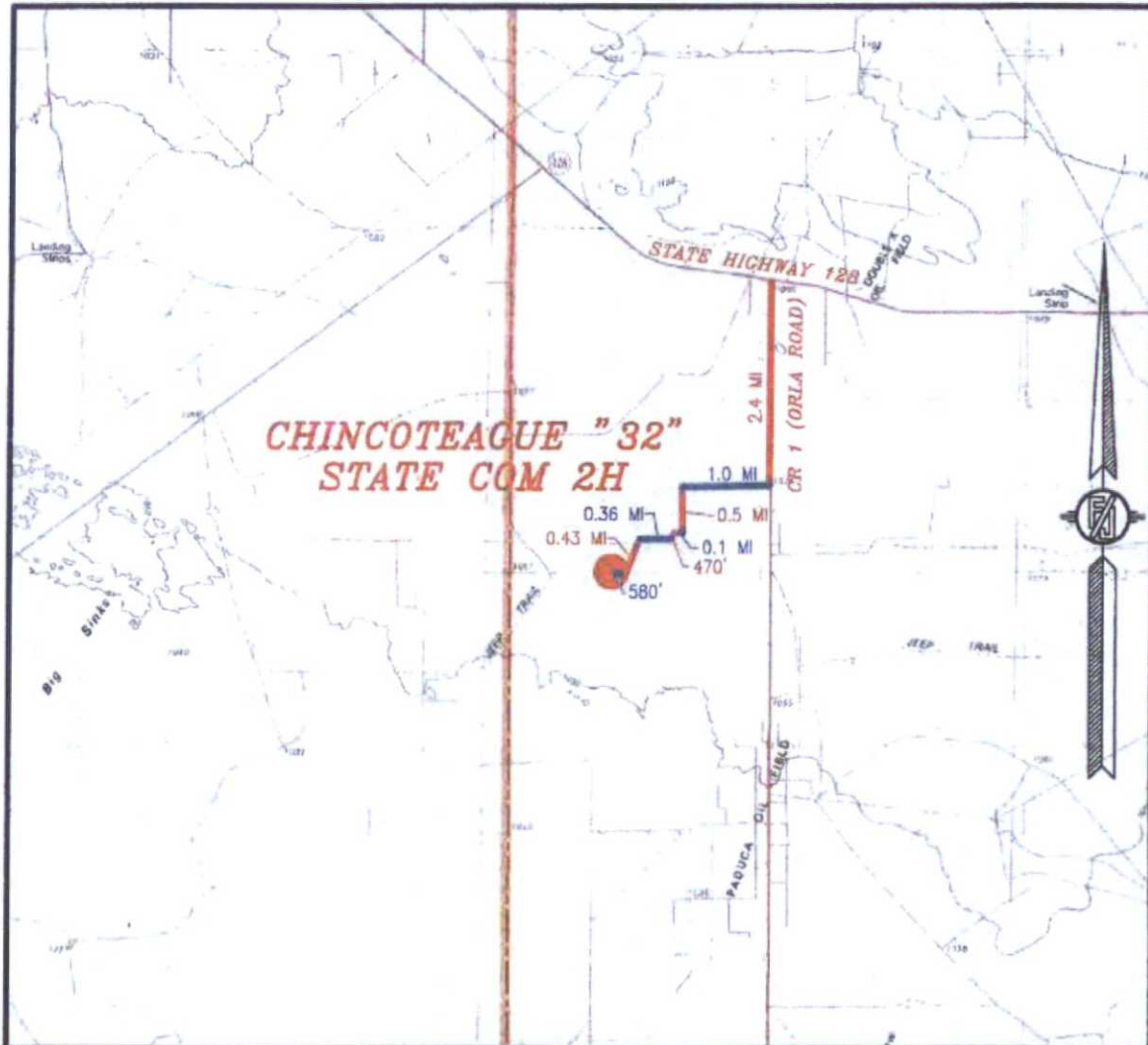
DEVON ENERGY PRODUCTION COMPANY, L.P.  
**CHINCOTEAGUE "32" STATE COM 2H**  
LOCATED 200 FT. FROM THE SOUTH LINE  
AND 880 FT. FROM THE WEST LINE OF  
SECTION 32, TOWNSHIP 24 SOUTH,  
RANGE 32 EAST, N.M.P.M.  
LEA COUNTY, STATE OF NEW MEXICO

DECEMBER 21, 2015

SURVEY NO. 3344A

MADRON SURVEYING, INC. 301 SOUTH CANAL (575) 234-3341 CARLSBAD, NEW MEXICO

SECTION 32, TOWNSHIP 24 SOUTH, RANGE 32 EAST, N.M.P.M.  
LEA COUNTY, STATE OF NEW MEXICO  
VICINITY MAP



DISTANCES IN MILES

NOT TO SCALE

DEVON ENERGY PRODUCTION COMPANY, L.P.  
**CHINCOTEAGUE "32" STATE COM 2H**  
LOCATED 200 FT. FROM THE SOUTH LINE  
AND 880 FT. FROM THE WEST LINE OF  
SECTION 32, TOWNSHIP 24 SOUTH,  
RANGE 32 EAST, N.M.P.M.  
LEA COUNTY, STATE OF NEW MEXICO

**DIRECTIONS TO LOCATION**

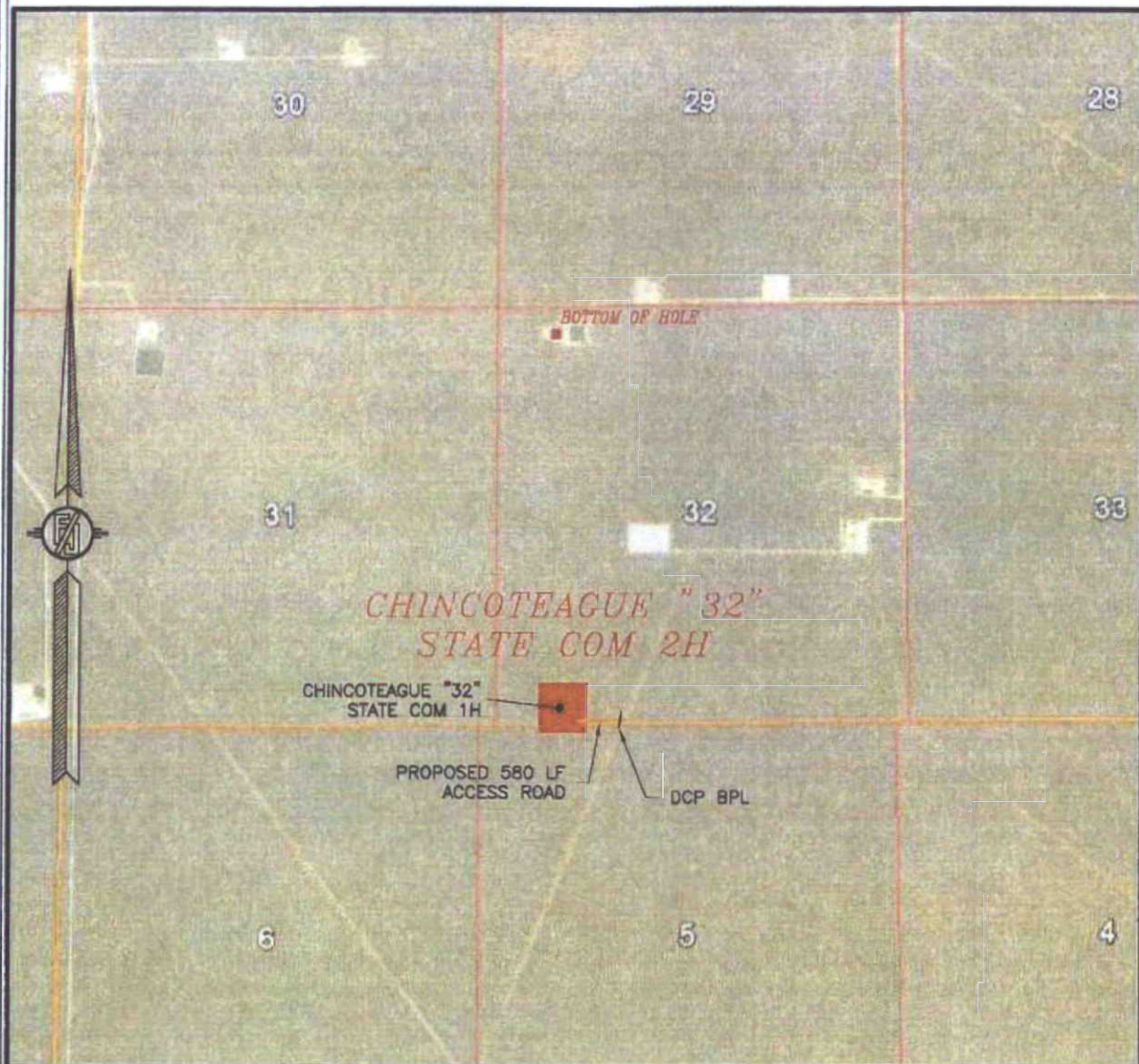
FROM STATE HIGHWAY 128 AND CR 1 (ORLA ROAD) GO SOUTH ON CR 1 2.4 MILES, TURN RIGHT ON CALICHE ROAD AND GO WEST 1.0 MILES, TURN LEFT AND GO SOUTH 0.5 MILES, BEND RIGHT AND GO WEST 0.1 MILES, BEND LEFT AND GO SOUTHWEST 470'. BEND RIGHT AND GO WEST 0.36 MILES, TURN LEFT AND GO SOUTH-SOUTHWEST 0.43 MILES TO A PROPOSED ROAD SURVEY AND FOLLOW FLAGS WEST 580' TO THE PROPOSED SOUTHEAST PAD CORNER FOR THIS LOCATION.

DECEMBER 21, 2015

SURVEY NO. 3344A

MADRON SURVEYING, INC. 301 SOUTH CANAL (575) 234-3341 CARLSBAD, NEW MEXICO

SECTION 32, TOWNSHIP 24 SOUTH, RANGE 32 EAST, N.M.P.M.  
LEA COUNTY, STATE OF NEW MEXICO  
**AERIAL PHOTO**



NOT TO SCALE  
AERIAL PHOTO:  
GOOGLE EARTH  
FEBRUARY 2014

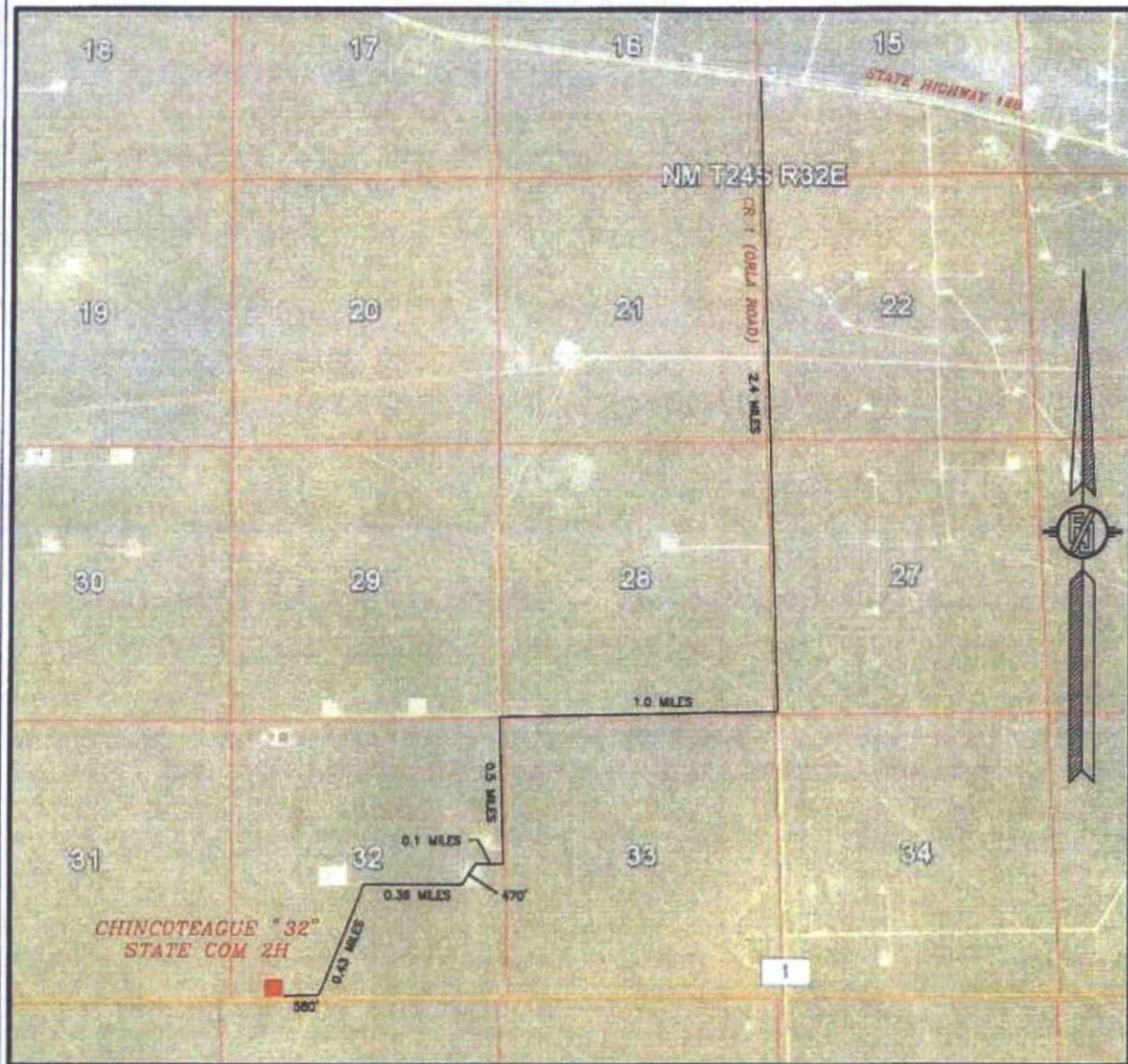
DEVON ENERGY PRODUCTION COMPANY, L.P.  
**CHINCOTEAGUE "32" STATE COM 2H**  
LOCATED 200 FT. FROM THE SOUTH LINE  
AND 880 FT. FROM THE WEST LINE OF  
SECTION 32, TOWNSHIP 24 SOUTH,  
RANGE 32 EAST, N.M.P.M.  
LEA COUNTY, STATE OF NEW MEXICO

DECEMBER 21, 2015

SURVEY NO. 3344A

MADRON SURVEYING, INC. 301 SOUTH CANAL (575) 234-3341 CARLSBAD, NEW MEXICO

SECTION 32, TOWNSHIP 24 SOUTH, RANGE 32 EAST, N.M.P.M.  
LEA COUNTY, STATE OF NEW MEXICO  
**ACCESS AERIAL ROUTE MAP**



NOT TO SCALE  
AERIAL PHOTO:  
GOOGLE EARTH  
FEBRUARY 2014

**DEVON ENERGY PRODUCTION COMPANY, L.P.**  
**CHINCOTEAGUE "32" STATE COM 2H**  
LOCATED 200 FT. FROM THE SOUTH LINE  
AND 880 FT. FROM THE WEST LINE OF  
SECTION 32, TOWNSHIP 24 SOUTH,  
RANGE 32 EAST, N.M.P.M.  
LEA COUNTY, STATE OF NEW MEXICO

DECEMBER 21, 2015

SURVEY NO. 3344A

MADRON SURVEYING, INC. 301 SOUTH CANAL (575) 234-3341 CARLSBAD, NEW MEXICO