

Submit 1 Copy To Appropriate District Office
District I - (575) 393-6161
1625 N. French Dr., Hobbs, NM 88240
District II - (575) 748-1283
811 S. First St., Artesia, NM 88210
District III - (505) 334-6178
1000 Rio Brazos Rd., Aztec, NM 87410
District IV - (505) 476-3460
1220 S. St. Francis Dr., Santa Fe, NM 87505

State of New Mexico
Energy, Minerals and Natural Resources

Form C-103
Revised July 18, 2013

OIL CONSERVATION DIVISION
1220 South St. Francis Dr.
Santa Fe, NM 87505

SUNDRY NOTICES AND REPORTS ON WELLS (DO NOT USE THIS FORM FOR PROPOSALS TO DRILL OR TO DEEPEN OR PLUG BACK TO A DIFFERENT RESERVOIR. USE "APPLICATION FOR PERMIT" (FORM C-101) FOR SUCH PROPOSALS.)		WELL API NO. 30-025-42059
1. Type of Well: Oil Well <input checked="" type="checkbox"/> Gas Well <input type="checkbox"/> Other <input type="checkbox"/>		5. Indicate Type of Lease STATE <input type="checkbox"/> FEE <input checked="" type="checkbox"/>
2. Name of Operator CHEVRON U.S.A. INC.		6. State Oil & Gas Lease No.
3. Address of Operator 15 SMITH ROAD, MIDLAND, TEXAS 79705		7. Lease Name or Unit Agreement Name GRAMMA RIDGE 14 24 34
4. Well Location Unit Letter: C 330 feet from NORTH line and 2310 feet from the WEST line Section 14 Township 24S Range 34E NMPM County LEA		8. Well Number 5H
11. Elevation (Show whether DR, RKB, RT, GR, etc.) 3500' GL		9. OGRID Number 4323
		10. Pool name or Wildcat RED HILLS; BONE SPRING, NORTH

12. Check Appropriate Box to Indicate Nature of Notice, Report or Other Data

NOTICE OF INTENTION TO:		SUBSEQUENT REPORT OF:	
PERFORM REMEDIAL WORK <input type="checkbox"/>	PLUG AND ABANDON <input type="checkbox"/>	REMEDIAL WORK <input type="checkbox"/>	ALTERING CASING <input type="checkbox"/>
TEMPORARILY ABANDON <input type="checkbox"/>	CHANGE PLANS <input type="checkbox"/>	COMMENCE DRILLING OPNS. <input type="checkbox"/>	P AND A <input type="checkbox"/>
PULL OR ALTER CASING <input type="checkbox"/>	MULTIPLE COMPL <input type="checkbox"/>	CASING/CEMENT JOB <input type="checkbox"/>	
DOWNHOLE COMMINGLE <input type="checkbox"/>			
CLOSED-LOOP SYSTEM <input type="checkbox"/>			
OTHER:		OTHER: NEW WELL COMPLETION	

13. Describe proposed or completed operations. (Clearly state all pertinent details, and give pertinent dates, including estimated date of starting any proposed work). SEE RULE 19.15.7.14 NMAC. For Multiple Completions: Attach wellbore diagram of proposed completion or recompletion.

07/30/2015: MIRU. (SUMMARY REPORT ATTACHED).

08/08/2015 THROUGH 08/13/2015: PERF 13,800 - 9690'. (SEE ATTACHED WELLBORE DIAGRAM FOR ALL INTERVALS)
FRAC W/CLEAN VOLUME - 5,690,328 GALS, & TOTAL PROPPANT - 4,671,636 LBS.

08/16/2015: WELL FLOWING @ 1.3 BPM ON 16/64" CHOKE.

08/26/2015: SET 2 7/8" TBG @ 8825'. (TBG SUMMARY ATTACHED).

08/27/2015: RIG DOWN.

09/22/2015: ON 24 HR OPT. FLOWING 523 OIL, 824 GAS, & 1728 WATER. GOR-1652

Spud Date:

Rig Release Date:

I hereby certify that the information above is true and complete to the best of my knowledge and belief.

SIGNATURE

Denise Pinkerton

TITLE REGULATORY SPECIALIST

DATE 12/15/2015

Type or print name DENISE PINKERTON

E-mail address: leakejd@chevron.com

PHONE: 432-687-7375

For State Use Only

APPROVED BY:

[Signature]

TITLE Petroleum Engineer

DATE

01/07/15

Conditions of Approval (if any):

JAN 08 2016



Summary Report

Completion

Complete

Job Start Date: 7/30/2015

Job End Date: 8/28/2015

Well Name GRAMMA RIDGE 14-24-34 005H		Lease Gramma Ridge 14-24-34	Field Name Red Hills North	Business Unit Mid-Continent	
Ground Elevation (ft) 3,500.00	Original RKB (ft) 3,524.50	Current RKB Elevation 3,524.50, 6/12/2015		Mud Line Elevation (ft)	Water Depth (ft)

Report Start Date: 7/30/2015

Com

No Activity

PJSM

Back fill cellar. Plumb in cellar with 5 K iron and 5 K valves. Paint Intermediate casing riser Blue and Surface casing riser White. NOTE: INTERMEDIATE CASING RISER HIGHER OF THE TWO

After filling cellar with pea gravel grade and smooth location. Spot Fresh water tanks on location for frac job.

Fill intermediate casing . It take 20 bbls to fill casing. Pressure test Intermediate casing to production annulus to 1000 psi for 30 minutes. Test successful. Bleed down.

Continue moving in Water transfer equipment.

No Activity

Report Start Date: 7/31/2015

Com

No activity

PJSM

N/D 7 1/16" 10M night cap from top of 7 1/16" Well head N/U fesco LMV. Remove 5" Type H BPV and Install 5" Type H Two-Way Check.then close LMV

Pressure test with EPS Test unit. LMV 7 1/16 10 K connection to well head and LMV 350 psi low pressure 5 min. 10000 psi high test for 5 minutes Test Good.

. Then N/U as follows:Fesco 7-1/16" 10M Upper Master Hydraulic Frac Valve 7-1/16" Flow cross Two (2) 4-1/16" 10M Valves (inner manual / outer hydraulic) on both sides 7-1/16" 10M Crown Manual Frac Valve . & RU flowback equipment with 2 OTT.

Pressure trst Fesco frac stack. 350 psi low and 10000 psi high. Pressure settles at 9800 pai. Test good. bleed off and R/D test unit.

PJSM

R/U Two CHS Pump trucks with 3" iron.

Flush line and prime both pumps . Then pressure test lines to 10400 psi Pressure test good. Bleed off lines and open well.

Pressure up on production casing to 9860 psi and Hold test.IC 350 psi. Pressure drops to 9770 psi and RSI opens after 50 minutes. In 5 minutes pressure drops to 2200 psi.

Start injection into formation for 1 minutes intervals

3 bpm 4200 psi
6 bpm 8500 psi
7 bpm 8700 psi
8 bpm 8600 psi
9 bpm 9000 psi

At 9 bpm pressure rose to 9750 psi and started kicking pumps out

Shut down Contact CE

Pressure falls from 9750 psi to 1272 psi. Shut well in for evening. Decision made to inject into formation and then spot 15 % HCL acid in morning.

No Activity

Report Start Date: 8/1/2015

Com

No Activity

PJSM

R/U transfer pump to FW tanks to feed CHS pumps during pump down. Load tanks with FW and spot remaining frac tanks on location.

Pressure test surface equipment to 10400 psi Test good bleed off to equalize to well pressure.

Initial WH at 1320 psi IC 500 psi. Start injecting down production csg. at 3 bpm.At 3 bpm pressures rises to 9700 psi and kick off pumps let pressure bleed down and come into it at 1.6 bpm stablizes at 8950 psi then increase rate to 2.6 bpm pressures stablizes at 9300 psiIncrease to 3 bpm pressures stablizes at 9150 psi. Increase to 3.5 bpm pressure stablize at 9250 psi Go to 4 bpm pressure stablize at 9175 psi. Increase to 4.5 bpm pressure stablizes at 9130 psi go to 5 bpm with 200 bbls pumped start pumping acid treatment 200 gal 15% HCL at 5 bpm. With all acid pumped increase rate to 6 bpm 8650 psi !C goes to 1200 psi bleed down to 900 psi . Increase rate to 7 bpm before acid goes out in formation pressue at 8750 psi. As acid hits increase rate to 15 bpm stablizes at 5900 psi over displace 100 bbls then spot second acid treatment 2000 gal 15% HCL Acid. Pressure at 4860 psi as acid hits rises to 5070 psi with all acid out pressure drops back down to 4750 psi with 100 bbls over displaced acid pressure at 4450 psi Shut down . ISIP 3480 psi. Allow pressure to fall for 5 minutes. Final pressure 1840 psi.Shut in well.

PJSM

R/D CHS pump truck.

Continue spotting pump down tanks and setting road crossing fill all tanks with FW Place 196 bbls in each acid tank as per Hallburton.

No Activity

Report Start Date: 8/2/2015

Com

No Activity

PJSM

Lay 36x60 containment mat for pump down side. off load containment for frac spread



Summary Report

Completion

Complete

Job Start Date: 7/30/2015

Job End Date: 8/28/2015

Well Name GRAMMA RIDGE 14-24-34 005H		Lease Gramma Ridge 14-24-34		Field Name Red Hills North		Business Unit Mid-Continent	
Ground Elevation (ft) 3,500.00	Original RKB (ft) 3,524.50	Current RKB Elevation 3,524.50, 6/12/2015			Mud Line Elevation (ft)	Water Depth (ft)	

Com

No Activity

Report Start Date: 8/3/2015

Com

No activity on location.

PJSM w/ Hal prior to MIRU equip. Review JSA and hazards. Go over muster area, sign in/out, TIF, ERP, SWA.

MIRU mountain movers, sand castles, and "T" Belt.

No activity on location.

Report Start Date: 8/4/2015

Com

No Activity. WO frac crews

Report Start Date: 8/5/2015

Com

No activity on location.

Offload sand.

Report Start Date: 8/6/2015

Com

No activity on location.

Cost update only.

Report Start Date: 8/7/2015

Com

No Activity

HSM & PJSA . Discuss Scope of Job, 360 my-space, WTJSA, slips-trips-falls, communication

Maintenance on crane

No Activity

PJSM w/ Hal prior to MIRU pump down side of frac spread. Go over JSA/hazards/mitigation. Review Tenet, Hazard, TIF, ERP, muster points, good communication, CVX expectations, staying hydrated and use of SWA.

Begin MIRU Hal pump down side.

Continue into next reporting day.

Report Start Date: 8/8/2015

Com

MIRU Hal pump down side

PJSM w/ Hal daylight crew. Go over JSA/hazards/mitigation. Review Tenet, Hazard, TIF, ERP, SWA, muster points, CVX expectations, good communication, staying hydrated.

Cont. R/U of pump down equipment

HSM & PJSA . Discuss Scope of Job, 360 my-space, WTJSA, SWA, TIF, ERP, PPE, slips-trips-falls, Chevron idling policy, over head loads, tag lines, line of fire, proper lifting techniques, heat, communication

MIRU Hal WLU, EPS torque/test, PWR 10K pressure control. ND Crown Valve. NU Goat Head on top of flow cross. NU Crown Valve, WL Flange and BOPE. Cont' RU Hal pump down lines to Goat Head and restrain.

NOTE: Begin mixing acid in tanks

Prime up pump lines to OTT. Test to 250/9000 psi. At 8000 psi developed leak @ Fesco manifold and Halliburton bleed off iron. Replace seals and retest. Test against hydraulic master valve to 250/9000 psi. Good test. Bleed to "0" psi.

PU lubricator and CCL w/ wt bars. MU on BOPE and test to 250/8000 psi.

WHP: 800

PU guns for stage #1.

Four clusters of 3 1/8" HSC Guns and CCL, 21 Gram Maxforce Charges w/ select fire switches 6 spf, 60deg,

N/U lubricator & equalize to well.

TIH w/ guns and 4.35" dummy plug to 464' and SD (Collar @ 444'). String weight 298 lbs. PU to 350' TIH to 464' and fall thru tight spot. PU back thru tight spot @ 200 lbs over string wt. TIH thru tight spot @ 464' again and work thru. TOOH to surface and inspect dummy plug. Marks on dummy plug @ tip. Recaliper dummy plug @ 4.35".

NOTE: Call CS and discuss perforating stage #1 and then Run GR/JB/CCL on tight section before attempting to run frac plugs.

"Perf Stage #1"

Plug Setting Depth: NA'

Perf Depths: 13,798', 13,748', 13,694', 13,642', 13,590'

60° Phasing

Notes: TIH w/ CCL guns BHA correlating w/ SJ @ 8850'-8860'. Pump down using 281 bbls treated water @ 14.7 bpm @ 251 fpm. Max pressure 5312 psi. Total 48 shots"

Continue to rig up frac equipment and load acid

PJSM w/ Hal W/L, Fesco, TNT, EPS, PWR. Go over scope of job for GR/JB run. Review JSA/hazards/mitigation. Go over muster points, TIF, 360 MySpace.



Summary Report

Completion

Complete

Job Start Date: 7/30/2015

Job End Date: 8/28/2015

Well Name GRAMMA RIDGE 14-24-34 005H		Lease Gramma Ridge 14-24-34	Field Name Red Hills North	Business Unit Mid-Continent	
Ground Elevation (ft) 3,500.00	Original RKB (ft) 3,524.50	Current RKB Elevation 3,524.50, 6/12/2015		Mud Line Elevation (ft)	Water Depth (ft)

Com

P/U 4.5" GR/JB
P/U lubricator
Equalize and open well.
TIH on W/L
Continue into next reporting day.

Report Start Date: 8/9/2015

Com

SIICP: "0", SIICP: 800
Make 8 WL runs trouble shooting tight spot. 6 runs w/ same results as follows:

1. 4.5" GR/JB/CCL TIH to 445' SD TOH.
2. 4.4" GR/JB/CCL TIH to 445' SD TOH
3. 4.385" GR/JB/CCL TIH to 445' SD TOH
4. 4.2" GR/JB/CCL TIH to 445' SD TOH
5. 3.65" GR/JB/CCL TIH to 445' SD TOH
6. 3.125" Wt bars/CCL TIH to 445' SD TOH

WL cut off 65' line and and rehead.

7. 3.125" Wt.bars/CCL TIH to 380' SD. TOH

WL cut off 500' line and rehead. Found flat spot in wire.

8. 3.125" Wt.bars/CCL TIH to 650' w/ no issues. TOH.

LD BHA and lubricator.

NOTE: Cont' RU frac since 00:00 hrs

Cont' RU frac equipment. 2 HPPT's, risers, N2 pop-off, ground manifolds and restrain all. MIRU Baker Petrolite auger trlr.

NOTE: 2 workers at a time rotate to cool down trlr due to high temperatures.

Operations suspended due to lightning in the area.

Report Start Date: 8/10/2015

Com

Prime up and test lines to 9500 psi.
Set N2 popoff at 9500 psi.

PJSM w/ Hal Frac, W/L, Fesco, PWR, EPS, TNT, Baker, BK, OTG, NOV. Go over CVX expecations, stage 5 safety, JSAs/hazards/mitigation, muster points, TIF, ERP, Tenet, Hazard, SWA. Review importance of good communication, staying hydrated, incident reporting, proper tools, suspended loads, using spotters.

Trouble shoot leaking valves on surface iron.

Test surface lines to 9500 psi.

N2 popoff set at 9500 psi.
Globals at 9000 psi
Pump kickouts f/8700-9000 psi.

WH 1300 psi.

Begin to Frac Stage #1
At stage 1-10 (.25-.50 100 mesh) screws on sand king malfunctions and densometer reading on blender goes down. Go to flush.

Shut down pumps and troubleshoot problem.

Troubleshoot blender issue. Clean out sand screws and reboot computer. Recalibrate screws and fuel pumps.

"Frac Stage #1
Breakdown Pressure: 4,774 psi
Average Pump Rate: 80.34 bpm
Max Pump Rate: 81.16 bpm
Average Pump Pressure: 4,759 psi
Max Pump Pressure: 8,154 psi
ISIP: 2,112 psi

Clean Volume Pumped: 431,645 gals
Total Proppant Pumped: 303,000 lbs

Notes: During stage 1 pumping 100 mesh @ .25-.50 ppg sand sand screws went out. Flush. Repair screws and pump 10,000 gal pad get back on schedule."

NOTE: TLR 10396

PU lubricator and CCL. MU on WH. Test to 250/8000 psi. Good Test. Bleed off and ND @ QTS.



Summary Report

Completion

Complete

Job Start Date: 7/30/2015

Job End Date: 8/28/2015

Well Name GRAMMA RIDGE 14-24-34 005H		Lease Gramma Ridge 14-24-34	Field Name Red Hills North	Business Unit Mid-Continent	
Ground Elevation (ft) 3,500.00	Original RKB (ft) 3,524.50	Current RKB Elevation 3,524.50, 6/12/2015		Mud Line Elevation (ft)	Water Depth (ft)

Com

SICP: 2000

PU guns for stage #2, Four Sets of 3 1/8" HSC Guns and CCL, 21 Gram Maxforce Charges w/ select fire switches 6 spf, 60deg, 12 Shots per gun (2' gun). RU lubriactor & equalize to well.

"Perf Stage #2

Plug Setting Depth: 13,564'

Perf Depths: 13,538', 13,486', 13,434', 13,382', 13,330'

60° Phasing

Notes: TIH w/ CCL guns BHA correlating w/ SJ @ 8850'-8860'. Pump down using 210 bbls treated water @ 15 bpm @ 250 fpm. Max pressure 2437 psi. Total 48 shots"

LD gun/plug BHA stage #2. All shots fired. Dropped ball.

12:30 - 13:00 hrs NOV couldn't prime up pumps.

13:00 - 13:45 hrs Halliburton had electronic issues w/ pumps not communicating.

"Frac Stage #2

Breakdown Pressure: 8,218 psi

Average Pump Rate: 80.34 bpm

Max Pump Rate: 81.09 bpm

Average Pump Pressure: 5,767 psi

Max Pump Pressure: 7,343 psi

ISIP: 2,396 psi

Clean Volume Pumped: 352,212 gals

Total Proppant Pumped: 301,790 lbs

Notes: While pumping 1.75-2.00 ppg 40/70 mesh had a pressure increase, pumped a 15 bbl 30 lb gel sweep"

NOTE TLR: 8386

SICP: 1850

PU guns for stage #3, Four Sets of 3 1/8" HSC Guns and CCL, 21 Gram Maxforce Charges w/ select fire switches 6 spf, 60deg, 12 Shots per gun (2' gun). RU lubriactor & equalize to well.

"Perf Stage #3

Plug Setting Depth: 13,304'

Perf Depths: 13,278', 13,226', 13,174', 13,122', 13,070'

60° Phasing

Notes: TIH w/ CCL guns BHA correlating w/ SJ @ 8850'-8860'. Pump down using 254 bbls treated water @ 15 bpm @ 250 fpm. Max pressure 3270 psi. Total 48 shots"

LD gun/plug BHA stage #3. All shots fired. Dropped ball.

Gel pro software not working properly, repaired computer and clean out screws.

"Frac Stage #3

Breakdown Pressure: 7,204 psi

Average Pump Rate: 80 bpm

Max Pump Rate: 82.1 bpm

Average Pump Pressure: 5,360 psi

Max Pump Pressure: 6,914 psi

ISIP: 2,353 psi

Clean Volume Pumped: 369,563 gals

Total Proppant Pumped: 290,932 lbs"

NOTE: TLR 8541

SICP: 1850

PU guns for stage #4, Four Sets of 3 1/8" HSC Guns and CCL, 21 Gram Maxforce Charges w/ select fire switches 6 spf, 60deg, 12 Shots per gun (2' gun). RU lubriactor & equalize to well.

TIH w/ guns/plug to perf stage #4 @ RT

Report Start Date: 8/11/2015

Com

"Perf Stage #4

Plug Setting Depth: 13,044'

Perf Depths: 13,018', 12,966', 12,914', 12,862', 12,810'

60° Phasing

Notes: TIH w/ CCL guns BHA correlating w/ SJ @ 8850'-8860'. Pump down using 235 bbls treated water @ 15 bpm @ 233 fpm. Max pressure 3500 psi. Total 48 shots. When setting plug, misfired twice, no voltage. Reset the computer and plug fired correctly and all remaining shots fired"

All shots fired POOH L/D gun assembly.



Summary Report

Completion

Complete

Job Start Date: 7/30/2015

Job End Date: 8/28/2015

Well Name GRAMMA RIDGE 14-24-34 005H		Lease Gramma Ridge 14-24-34	Field Name Red Hills North	Business Unit Mid-Continent	
Ground Elevation (ft) 3,500.00	Original RKB (ft) 3,524.50	Current RKB Elevation 3,524.50, 6/12/2015		Mud Line Elevation (ft)	Water Depth (ft)

Com

"Frac Stage #4

Breakdown Pressure: 7,969 psi
Average Pump Rate: 80 bpm
Max Pump Rate: 81.2 bpm
Average Pump Pressure: 4,774 psi
Max Pump Pressure: 7,446 psi
ISIP: 2,160 psi

Clean Volume Pumped: 360,108 gals

Total Proppant Pumped: 311,118 lbs"

NOTE: TLR 8574

Pressure test N2 popoff.
Set popoff at 9250 psi.

SICP: 2000

P/U guns for stage #5

Five clusters of 3 1/8" HSC Guns and CCL, 21 Gram Maxforce Charges w/ select fire switches 6 spf, 60deg, 12 Shots per gun (2' gun).

N/U lubricator and equalize well.

"Perf Stage #5

Plug Setting Depth: 12,780'

Perf Depths: 12,758', 12,706', 12,654', 12,602', 12,550'

60° Phasing

Notes: Open well 2000 psi. Get on depth w/ CCL and short jt at 8,850'-8,860'. Pump down using 158 bbls treated water @ 15 bpm at 315 fpm. Max pressure 2578 psi. "

All shots fired. POOH L/D gun assembly.

LD gun/plug BHA stage #5. All shots fired. Dropped ball.

"Frac Stage #5

Breakdown Pressure: 8,036 psi
Average Pump Rate: 79.9 bpm
Max Pump Rate: 81.53 bpm
Average Pump Pressure: 5,235 psi
Max Pump Pressure: 8,500 psi
ISIP: 2,640 psi

Clean Volume Pumped: 347,669 gals

Total Proppant Pumped: 302,174 lbs

Notes: TLR: 8397"

SICP: 2200

PU guns for stage #6, Four Sets of 3 1/8" HSC Guns and CCL, 21 Gram Maxforce Charges w/ select fire switches 6 spf, 60deg, 12 Shots per gun (2' gun). N/U lubricator & equalize to well.

Halliburton replace 2' plug valve

"Perf Stage #6

Plug Setting Depth: 12,524'

Perf Depths: 12,498', 12,446', 12,394', 12,342', 12,290'

60° Phasing

Notes: TIH w/ CCL guns BHA correlating w/ SJ @ 8850'-8860'. Pump down using 146 bbls treated water @ 14 bpm @ 250 fpm. Max pressure 2825 psi. Total 48 shots. "

LD gun/plug BHA stage #6. All shots fired. Dropped ball.

Fesco grease frac stack

Transducer went out on pump truck. Slope wasn't right on it. Changed out 1 pump truck, worked on another pump, and rigged up extra pump Change out pressure cables on pumps. Switch acid transports and reset IFS system. Restrain all. Prime up.

"Frac Stage #6

Breakdown Pressure: 7,966 psi
Average Pump Rate: 80.44 bpm
Max Pump Rate: 81.14 bpm
Average Pump Pressure: 5,348 psi
Max Pump Pressure: 7,201 psi
ISIP: 2,695 psi

Clean Volume Pumped: 347,416 gals

Total Proppant Pumped: 302,274 lbs

Notes: TLR:8389"



Summary Report

Completion

Complete

Job Start Date: 7/30/2015

Job End Date: 8/28/2015

Well Name GRAMMA RIDGE 14-24-34 005H		Lease Gramma Ridge 14-24-34	Field Name Red Hills North	Business Unit Mid-Continent	
Ground Elevation (ft) 3,500.00	Original RKB (ft) 3,524.50	Current RKB Elevation 3,524.50, 6/12/2015		Mud Line Elevation (ft)	Water Depth (ft)

Com

SICP: 2200

P/U guns for stage #6

Five clusters of 3 1/8" HSC Guns and CCL, 21 Gram Maxforce Charges w/ select fire switches 6 spf, 60deg, 12 Shots per gun (2' gun).

N/U lubricator and equalize well.

"Perf Stage #7

Plug Setting Depth: 12,260'

Perf Depths: 12,238', 12,186', 12,134', 12,082', 12,030'

60° Phasing

Notes: Correlated at short joint at 8850'

Moved Plugdue to collar

Tension prior to set - 1412 lbs, after set - 1084 lbs. Pump 2 bpm while perforating.

Max pressure: 2957 psi, Total Volume 184bbl"

LD gun/plug BHA stage #7. All shots fired. Dropped ball.

"Frac Stage #7

Breakdown Pressure: 8,104 psi

Average Pump Rate: 80.3 bpm

Max Pump Rate: 81 bpm

Average Pump Pressure: 5,756 psi

Max Pump Pressure: 7,519 psi

ISIP: 2,595 psi

Clean Volume Pumped: 355,592 gals

Total Proppant Pumped: 304,280 lbs

Notes: TLR=8466"

Report Start Date: 8/12/2015

Com

SICP: 2200

P/U guns for stage #8

Five clusters of 3 1/8" HSC Guns and CCL, 21 Gram Maxforce Charges w/ select fire switches 6 spf, 60deg, 12 Shots per gun (2' gun).

N/U lubricator and equalize well.

"Perf Stage #8

Plug Setting Depth: 12,004'

Perf Depths: 11,978', 11,926', 11,874', 11,822', 11,770'

60° Phasing

Notes: Gun assembly: 3-1/8" slick gun at 6 spf, 21.5 gram DP charges. Open well 2100 psi. Get on depth w/ CCL and short jt at 8850'-8860'. Pump down using 170 bbls treated water @ 14 bpm. Max pressure 3121 psi. "

LD gun/plug BHA stage #8. All shots fired. Dropped ball.

"Frac Stage #8

Breakdown Pressure: 7,422 psi

Average Pump Rate: 80.3 bpm

Max Pump Rate: 81.8 bpm

Average Pump Pressure: 5,157 psi

Max Pump Pressure: 6,215 psi

ISIP: 2,516 psi

Clean Volume Pumped: 359,683 gals

Total Proppant Pumped: 303,413 lbs"

Note: TLR=8563

SICP: 2148

P/U guns for stage #9

Five clusters of 3 1/8" HSC Guns and CCL, 21 Gram Maxforce Charges w/ select fire switches 6 spf, 60deg, 12 Shots per gun (2' gun).

N/U lubricator and equalize well.

"Perf Stage #9

Plug Setting Depth: 11,740'

Perf Depths: 11,718', 11,666', 11,614', 11,562', 11,510'

60° Phasing

Notes: Gun assembly: 3-1/8" slick gun at 6 spf, 21.5 gram DP charges. Open well 2150 psi. Get on depth w/ CCL and short jt at 8850'-8860'. Pump down using 167 bbls treated water @ 14 bpm. Max pressure 2802 psi. "

LD gun/plug BHA stage #9. All shots fired. Dropped ball.

Fesco grease stack excluding hydraulic valves.



Summary Report

Completion

Complete

Job Start Date: 7/30/2015

Job End Date: 8/28/2015

Well Name GRAMMA RIDGE 14-24-34 005H		Lease Gramma Ridge 14-24-34	Field Name Red Hills North	Business Unit Mid-Continent	
Ground Elevation (ft) 3,500.00	Original RKB (ft) 3,524.50	Current RKB Elevation 3,524.50, 6/12/2015		Mud Line Elevation (ft)	Water Depth (ft)

Com

Pressure test N2 popoff.
Set popoff at 9250 psi.

Frac Stage #9

Breakdown Pressure: 8,034 psi
Average Pump Rate: 80.4 bpm
Max Pump Rate: 83.2 bpm
Average Pump Pressure: 5,931 psi
Max Pump Pressure: 6,986 psi
ISIP: 2,277 psi

Clean Volume Pumped: 358,279 gals
Total Proppant Pumped: 301,827 lbs

NOTE: TLR 8531

SICP: 2238

P/U guns for stage #10

Five clusters of 3 1/8" HSC Guns and CCL, 21 Gram Maxforce Charges w/ select fire switches 6 spf, 60deg, 12 Shots per gun (2' gun).

N/U lubricator and equalize well.

"Perf Stage #10

Plug Setting Depth: 11,484'

Perf Depths: 11,458', 11,406', 11,354', 11,302', 11,250'

60° Phasing

Notes: Gun assembly: 3-1/8" slick gun at 6 spf, 21.5 gram DP charges. Open well 2100 psi. Get on depth w/ CCL and short jt at 8850-8860'. Pump down using 99 bbls treated water @ 14 bpm. Max pressure 2731 psi. "

LD gun/plug BHA stage #10. All shots fired. Dropped ball.

"Frac Stage #10

Breakdown Pressure: 8,158 psi
Average Pump Rate: 80.2 bpm
Max Pump Rate: 81.1 bpm
Average Pump Pressure: 6,908 psi
Max Pump Pressure: 8,240 psi
ISIP: 6,022 psi

Clean Volume Pumped: 298,353 gals
Total Proppant Pumped: 131,548 lbs

Notes: At the end of 100 mesh TCC generator went down. Extended pad 230 bbls until generator up and running. Cont' by design. During 1.25-1.5 ppg 40/70 sand pressure spiked f/6300 t/8250 . Pump Pre-flush and flush w/ 6022 ISIP. "

NOTE: TLR 6985

SICP: 2148

P/U guns for stage #11

Five clusters of 3 1/8" HSC Guns and CCL, 21 Gram Maxforce Charges w/ select fire switches 6 spf, 60deg, 12 Shots per gun (2' gun).

N/U lubricator and equalize well.

"Perf Stage #11

Plug Setting Depth: 11,220'

Perf Depths: 11,198', 11,146', 11,094', 11,042', 10,990'

60° Phasing

Notes: TIH w/ CCL guns BHA correlating w/ SJ @ 8850'-8860'. Pump down using 99 bbls treated water @ 14 bpm @ 250 fpm. Max pressure 3335 psi. Total 48 shots. "

LD gun/plug BHA stage #11. All shots fired. Dropped ball.

"Frac Stage #11

Breakdown Pressure: 7,930 psi
Average Pump Rate: 80.21 bpm
Max Pump Rate: 81.03 bpm
Average Pump Pressure: 5,195 psi
Max Pump Pressure: 6,443 psi
ISIP: 2,904 psi

Clean Volume Pumped: 344,288 gals

Total Proppant Pumped: 298,866 lbs

Notes: TLR=8316"



Summary Report

Completion

Complete

Job Start Date: 7/30/2015

Job End Date: 8/28/2015

Well Name GRAMMA RIDGE 14-24-34 005H		Lease Gramma Ridge 14-24-34	Field Name Red Hills North	Business Unit Mid-Continent	
Ground Elevation (ft) 3,500.00	Original RKB (ft) 3,524.50	Current RKB Elevation 3,524.50, 6/12/2015		Mud Line Elevation (ft)	Water Depth (ft)

Com

SICP: 2250

P/U guns for stage #12

Five clusters of 3 1/8" HSC Guns and CCL, 21 Gram Maxforce Charges w/ select fire switches 6 spf, 60deg, 12 Shots per gun (2' gun).

N/U lubricator and equalize well.

"Perf Stage #12

Plug Setting Depth: 10,964'

Perf Depths: 10,938', 10,886', 10,834', 10,782', 10,730'

60° Phasing

Notes: Correlated at short joint at 8850'

Tension prior to set - 1370 lbs, after set - 980 lbs. Pump 2 bpm while perforating.

Max pressure: 3486 psi, Max rate 14 bbls/min Total Volume 95 bbl"

LD gun/plug BHA stage #12. All shots fired. Dropped ball.

Note: Fesco grease frac stack including hydraulic valve.

"Frac Stage #12

Breakdown Pressure: 7,940 psi

Average Pump Rate: 80.1 bpm

Max Pump Rate: 81 bpm

Average Pump Pressure: 6,411 psi

Max Pump Pressure: 7,007 psi

ISIP: 2,734 psi

Clean Volume Pumped: 383,258 gals

Total Proppant Pumped: 304,135 lbs

Notes: TLR = 9,125 bbls"

SICP: 2400

P/U guns for stage #13

Five clusters of 3 1/8" HSC Guns and CCL, 21 Gram Maxforce Charges w/ select fire switches 6 spf, 60deg, 12 Shots per gun (2' gun).

N/U lubricator and equalize well.

Report Start Date: 8/13/2015

Com

"Perf Stage #13

Plug Setting Depth: 10,700'

Perf Depths: 10,678', 10,626', 10,574', 10,522', 10,470'

60° Phasing

Notes: Gun assembly: 3-1/8" slick gun at 6 spf, 21.5 gram DP charges. Open well 2150 psi. Get on depth w/ CCL and short jt at 8850-8860'. Pump down using 79 bbls treated water @ 14 bpm. Max pressure 3000 psi. "

LD gun/plug BHA stage #13. All shots fired. Dropped ball.

"Frac Stage #13

Breakdown Pressure: 7,693 psi

Average Pump Rate: 80.4 bpm

Max Pump Rate: 81.2 bpm

Average Pump Pressure: 5,799 psi

Max Pump Pressure: 6,508 psi

ISIP: 2,847 psi

Clean Volume Pumped: 348,034 gals

Total Proppant Pumped: 305,302 lbs

Notes: TLR=8287. Wireline performed rehead.

Pressure test N2 popoff. Set popoff at 9475 psi.

SICP: 2100

P/U guns for stage #14

Five clusters of 3 1/8" HSC Guns and CCL, 21 Gram Maxforce Charges w/ select fire switches 6 spf, 60deg, 12 Shots per gun (2' gun).

N/U lubricator and equalize well.

"Perf Stage #14

Plug Setting Depth: 10,444'

Perf Depths: 10,418', 10,366', 10,314', 10,262', 10,210'

60° Phasing

Notes: Gun assembly: 3-1/8" slick gun at 6 spf, 21.5 gram DP charges. Open well 2100 psi. Get on depth w/ CCL and short jt at 8850-8860'. Pump down using 55 bbls treated water @ 14 bpm. Max pressure 2771 psi. "



Summary Report

Completion

Complete

Job Start Date: 7/30/2015

Job End Date: 8/28/2015

Well Name GRAMMA RIDGE 14-24-34 005H		Lease Gramma Ridge 14-24-34	Field Name Red Hills North	Business Unit Mid-Continent	
Ground Elevation (ft) 3,500.00	Original RKB (ft) 3,524.50	Current RKB Elevation 3,524.50, 6/12/2015		Mud Line Elevation (ft)	Water Depth (ft)

Com

LD gun/plug BHA stage #14. All shots fired. Dropped ball.

Note: Fesco grease frac stack

"Frac Stage #14

Breakdown Pressure: 7,729 psi

Average Pump Rate: 80.45 bpm

Max Pump Rate: 81.34 bpm

Average Pump Pressure: 4,735 psi

Max Pump Pressure: 7,544 psi

ISIP: 2,867 psi

Clean Volume Pumped: 346,459 gals

Total Proppant Pumped: 301,857 lbs

Notes: TLR=8369"

SICP: 2150

P/U guns for stage #15

Five clusters of 3 1/8" HSC Guns and CCL, 21 Gram Maxforce Charges w/ select fire switches 6 spf, 60deg, 12 Shots per gun (2' gun).

N/U lubricator and equalize well.

"Perf Stage #15

Plug Setting Depth: 10,180'

Perf Depths: 10,158', 10,106', 10,054', 10,002', 9,950'

60° Phasing

Notes: Gun assembly: 3-1/8" slick gun at 6 spf, 21.5 gram DP charges. Open well 2150 psi. Get on depth w/ CCL and short jt at 8850-8860'. Pump down using 51 bbls treated water @ 14 bpm. Max pressure 2616 psi. "

LD gun/plug BHA stage #15. All shots fired. Dropped ball.

"Frac Stage #15

Breakdown Pressure: 8,359 psi

Average Pump Rate: 80.03 bpm

Max Pump Rate: 81.34 bpm

Average Pump Pressure: 4,737 psi

Max Pump Pressure: 5,659 psi

ISIP: 2,592 psi

Clean Volume Pumped: 344,335 gals

Total Proppant Pumped: 306,096 lbs

Notes: TLR=8322"

SICP: 2000

P/U guns for stage #16

Five clusters of 3 1/8" HSC Guns and CCL, 21 Gram Maxforce Charges w/ select fire switches 6 spf, 60deg, 12 Shots per gun (2' gun).

N/U lubricator and equalize well.

"Perf Stage #16

Plug Setting Depth: 9,924'

Perf Depths: 9,898', 9,846', 9,794', 9,742', 9,690'

60° Phasing

Notes: Gun assembly: 3-1/8" slick gun at 6 spf, 21.5 gram DP charges. Open well 2000 psi. Get on depth w/ CCL and short jt at 8850-8860'. Pump down using 39 bbls treated water @ 12 bpm. Max pressure 2331 psi. "

LD gun/plug BHA stage #16. All shots fired. Dropped ball.

"Frac Stage #16

Breakdown Pressure: 7,889 psi

Average Pump Rate: 80.09 bpm

Max Pump Rate: 80.23 bpm

Average Pump Pressure: 4,341 psi

Max Pump Pressure: 4,823 psi

ISIP: 2,647 psi

Clean Volume Pumped: 343,435 gals

Total Proppant Pumped: 303,024 lbs

Notes: TLR=8416"

*****All Frac Stages Pumped*****

Perform PJSM for R/D.

RDMO Halliburton Frac and Wireline equipment.

Report Start Date: 8/14/2015

Com

Continue RDMO Halliburton Frac equipment. Clean containment.



Summary Report

Completion

Complete

Job Start Date: 7/30/2015

Job End Date: 8/28/2015

Well Name GRAMMA RIDGE 14-24-34 005H		Lease Gramma Ridge 14-24-34	Field Name Red Hills North	Business Unit Mid-Continent	
Ground Elevation (ft) 3,500.00	Original RKB (ft) 3,524.50	Current RKB Elevation 3,524.50, 6/12/2015		Mud Line Elevation (ft)	Water Depth (ft)

Com

HSM & PJSA w/ Cudd, OTG, BK, TNT, Fesco, Coil Chem, Lobo Discuss Scope of Job, SWA, TIF, ERP, PPE, Tenet #4 We always...follow safe work practices and procedures, over head loads, pinch points, hand awareness, heat, slips/trips/falls, ML safety, proper backing, proper tools and lifting techniques, communication

MIRU OTG containment for CT spread, Cudd fluid pump. EPS NU CT flange to crown and MU BOPE. Load CT reel w/ 10 bbls f/w and 70 bbls FR water.

MU CT/DO 4.625" JZ Rockbitl BHA #1 as follows from top to bottom

OD	Description	Length
2.875"	CT connector	.98'
2.875"	Dual BPV	1.21'
2.875"	Fau Hyd Disconnect	2.13'
2.875"	Dual Circ Sub	1.34'
3.063"	X-Over	.51'
2.88"	160 gpm Agitator	4.35'
3.0625"	X -Over	.50'
3.125"	Hi-Torque Motor	11.72'
3.750"	Rev Jet Bit Sub	.76'
4.625"	JZ Rockbit	.50'
TOTAL LENGTH		24.0'

Pull test connector 30K, Pull test 35K. Good test..

Function Test motor @ surface 4 bpm @ 5100 psi

NOTE: 3/4" Ball Disconnect

NOTE: 5/8" Ball Dual Circ' Disconnect

WHP: 1550

Function test BOPE. Good Test.

.Pressure test against choke manifold to 250/8000 psi. Good test. Equalize to WHP.

Hold pre-job safety meeting w/ all crews.

TIH w/ JZ Rockbit BHA #1 to 2000' noticed loose guard on hydraulic motor on injector head. Upon inspection attempted to tighten bold on sight glass hydraulic motor and broke off aluminum bolt.

WO bolt to repair injector head. Replace bolt

Beginning 2000' Cont' TIH to KOP @ 8892' pumping FR water @ 1 bpm maintaining WHP on FB making 2 PU's.

6000' PU wt 11,000 lbs

8508' PU wt 16,000 lbs

Increase pump rate to 4 bpm in/4.3 bpm out

CTP: 1470 , WHP: 6200

Cont' TIH to plug #1 @ 9949' and tag.



Summary Report

Completion

Complete

Job Start Date: 7/30/2015

Job End Date: 8/28/2015

Well Name GRAMMA RIDGE 14-24-34 005H		Lease Gramma Ridge 14-24-34	Field Name Red Hills North	Business Unit Mid-Continent	
Ground Elevation (ft) 3,500.00	Original RKB (ft) 3,524.50	Current RKB Elevation 3,524.50, 6/12/2015		Mud Line Elevation (ft)	Water Depth (ft)

Com

"Tagged Plug #1 @ 21:18 @ 9,949' WHP 1,500 psi
Through plug @ 21:34 @ 9,952' WHP 1,400 psi
Plug Milling Time 0:16
Notes: Circulating pressure 4800 psi, 5 bbl sweep @ 85 vis before, Rate 4/4.1 BPM, Running Weight 15k, 5bbl sweep @ 84 vis after."

"Tagged Plug #2 @ 21:49 @ 10,205' WHP 1,400 psi
Through plug @ 22:06 @ 10,207' WHP 1,300 psi
Plug Milling Time 0:17
Notes: Circulating pressure 4600 psi, 5 bbl sweep @ 98 vis before, Rate 4/4.5 BPM, Running Weight 16k, 5bbl sweep @ 111 vis after."

"Tagged Plug #3 @ 22:26 @ 10,472' WHP 1,300 psi
Thru plug @ 22:39 @ 10,475' WHP 1,400 psi
Plug Milling Time 0:13
Notes: Circulating pressure 4600 psi, 5 bbl sweep @ 104 vis before, Rate 4/4.1 BPM, Running Weight 15k, 5bbl sweep @ 105 vis after."

"Tagged Plug #4 @ 23:00 @ 10,724' WHP 1,400 psi
Thru plug @ 23:19 @ 10,727' WHP 1,400 psi
Plug Milling Time 0:19
Notes: Circulating pressure 4600 psi, 5 bbl sweep @ 106 vis before, Rate 4/4.5 BPM, Running Weight 15k, 5bbl sweep @ 99 vis after."

"Tagged Plug #5 @ 23:37 @ 10,991' WHP 1,400 psi
Thru plug @ 23:53 @ 10,994' WHP 1,500 psi
Plug Milling Time 0:16
Notes: Circulating pressure 4600 psi, 5 bbl sweep @ 99 vis before, Rate 4/4.5 BPM, Running Weight 16k, 5bbl sweep @ 101 vis after."

Report Start Date: 8/15/2015

Com

Tag plug #6 and begin Short Trip, TIH @ 35 ft/min, send 10-10-10 BBL sweep, circulate and wait for return to clean, returns clean. Top short trip 8800"

"Tagged Plug #6 @ 02:21 @ 11,245' WHP 1,500 psi
Thru plug @ 02:28 @ 11,248' WHP 1,400 psi
Plug Milling Time 7 min
Notes: Circulating pressure 4600 psi, 5 bbl sweep @ 99 vis before, Rate 4/4.4 BPM, WOB 2k, 5bbl sweep @ 106 vis after."

"Tagged Plug #7 @ 02:45 @ 11,514' WHP 1,400 psi
Thru plug @ 02:55 @ 11,518' WHP 1,400 psi
Plug Milling Time 0:10
Notes: Circulating pressure 4600 psi, 5 bbl sweep @ 104 vis before, Rate 4/4.3 BPM, WOB 2k, 10bbl sweep @ 104 vis after."

"Tagged Plug #8 @ 03:17 @ 11,772' WHP 1,400 psi
Thru plug @ 03:36 @ 11,775' WHP 1,400 psi
Plug Milling Time 0:19
Notes: Circulating pressure 4600 psi, 5 bbl sweep @ 104 vis before, Rate 4/4.3 BPM, WOB 2k, 5bbl sweep @ 101 vis after."

"Tagged Plug #9 @ 03:56 @ 12,055' WHP 1,400 psi
Thru plug @ 04:04 @ 12,059' WHP 1,400 psi
Plug Milling Time 0:08
Notes: Circulating pressure 4600 psi, 5 bbl sweep @ 102 vis before, Rate 4/4.3 BPM, WOB 2k, 5bbl sweep @ 102 vis after."

"Tagged Plug #10 @ 04:21 @ 12,292' WHP 1,400 psi
Thru plug @ 04:40 @ 12,296' WHP 1,400 psi
Plug Milling Time 0:19
Notes: Circulating pressure 4600 psi, 5 bbl sweep @ 101 vis before, Rate 4/4.3 BPM, WOB 2k, 5bbl sweep @ 100 vis after."

TIH to tag #11 not there. Cont' TIH to tag #11 @ 12730'

Send 10 bbls gel sweep and POOH @ 35 fpm sending 10 bbls gel sweeps . TOOH to KOP 8892' sending 10 bbl sweep. Sweep @ surface and TBIH @ 70 fpm to plug #11 @ 12,730'



Summary Report

Completion

Complete

Job Start Date: 7/30/2015

Job End Date: 8/28/2015

Well Name GRAMMA RIDGE 14-24-34 005H		Lease Gramma Ridge 14-24-34	Field Name Red Hills North	Business Unit Mid-Continent	
Ground Elevation (ft) 3,500.00	Original RKB (ft) 3,524.50	Current RKB Elevation 3,524.50, 6/12/2015		Mud Line Elevation (ft)	Water Depth (ft)

Com

"Tagged Plug #11 @ 08:32 @ 12,730' WHP 1,500 psi
Thru plug @ 08:45 @ 12,732' WHP 1,600 psi
Plug Milling Time 0:13
Notes: Send 110 visc 5 bbls gel sweep each coil volumn of 84 bbls. Encountered sand between 11 & 12"

"Tagged Plug #12 @ 08:50 @ 12,780' WHP 1,550 psi
Thru plug @ 09:00 @ 12,782' WHP 1,600 psi
Plug Milling Time 0:10
Notes: Send 110 visc 10 bbls gel sweep each coil volumn of 84 bbls. Encountered sand between 11 & 12. Begin sending 5 bbs gel sweep every Coil capacity of 84 bbls."

"Tagged Plug #13 @ 09:17 @ 13,044' WHP 1,550 psi
Thru plug @ 09:28 @ 13,046' WHP 1,600 psi
Plug Milling Time 0:11
Notes: Send 110 visc 10 bbls gel sweep each coil volumn of 84 bbls. Encountered sand between 13 & 14. Sending 5 bbs gel sweep every Coil capacity of 84 bbls. Power pack on CTU ran out of diesel 9:30-10:00 hrs. Resume operations"

"Tagged Plug #14 @ 10:46 @ 13,304' WHP 1,600 psi
Thru plug @ 10:59 @ 13,306' WHP 1,600 psi
Plug Milling Time 0:13
Notes: Send 110 visc 10 bbls gel sweep each coil volumn of 84 bbls. Encountered sand between 14 & 15. Sending 5 bbs gel sweep every Coil capacity of 84 bbls. "

"Tagged Plug #15 @ 11:32 @ 13,564' WHP 1,600 psi
Thru plug @ 11:45 @ 13,566' WHP 1,600 psi
Plug Milling Time 0:13
Notes: Send 110 visc 10 bbls gel sweep each coil volumn of 84 bbls. Encountered sand between 14 & 15. Sending 5 bbs gel sweep every Coil capacity of 84 bbls. "

Cont' TIH to RSI @ 13,824 '
Send 10 bbls gel sweep 10 bbls spacer 10 bbls gel sweep. POOH @ 35 fpm sending 10 bbls gel sweeps @ 11,800' and 10,000'. TOO H to KOP 8892' sending 10 bbl sweep. Sweep @ surface and TOO H to surface.

NOTE: Recover heavy sand at surface on sweep from heel and little to no sand on sweep from KOP.

Bump up into lubricator. Cycle crown valve and close hydraulic master. Bleed off to OTT.

LD BHA #1 JZ Rockbit.

LD lubricator. ND BOPE and CT Flange
RDMO 2 3/8" CTU and pump truck. NU capping flange on top of Crown Valve.

WHP: 1700
Open well on 12/64 for first hr making 49 bbls water for first hr.

WHP: 1600
Increase choke to 14/64 @ 19:00 hrs and Cont' to FB well 24 operations w/ supervision

Report Start Date: 8/16/2015

Com

Well Flowing @ 1.3 bpm (16/64ths choke)
Beginning FWHP: 1600
Ending FWHP: 1600
Recovered 856.49 bbls
24 hr water 1882.08
24 hr oil "0"
Total water recovered 856.49 bbls
Total oil recovered "0"
Fluid Rate 1.3 bpm
Total Load to Recover 135206.51 bbls

NOTE: No sand during flow back operations



Summary Report

Completion

Complete

Job Start Date: 7/30/2015

Job End Date: 8/28/2015

Well Name GRAMMA RIDGE 14-24-34 005H		Lease Gramma Ridge 14-24-34		Field Name Red Hills North		Business Unit Mid-Continent	
Ground Elevation (ft) 3,500.00	Original RKB (ft) 3,524.50	Current RKB Elevation 3,524.50, 6/12/2015				Mud Line Elevation (ft)	Water Depth (ft)

Com

18:00 hrs

Well Flowing @ 1.84 bpm (20/64ths choke)

Beginning FWHP: 1600

Ending FWHP: 1400

Recovered 1922.2 bbls

24 hr water 2662.80

24 hr oil "0"

Total water recovered 1922.2 bbls

Total oil recovered "0"

Fluid Rate 1.84 bpm

Total Load to Recover 134140.8 bbls

18:00 hrs Cont' 24 hr FB operations w/ supervision

NOTE: No sand during flow back operations

Report Start Date: 8/17/2015

Com

6:00 hrs

Well Flowing @ 2.12 bpm (22/64ths choke)

Beginning FWHP: 1400

Ending FWHP: 1425

Recovered 3341.3 bbls

24 hr water 3052.80

24 hr oil "0"

Total water recovered 3341.3 bbls

Total oil recovered "0"

Fluid Rate 2.12 bpm

Total Load to Recover 132721.7 bbls

06:00 hrs Cont' 24 hr FB operations w/ supervision

NOTE: No sand during flow back operations

18:00 hrs

Well Flowing @ 2.11 bpm (22/64ths choke)

Beginning FWHP: 1425

Ending FWHP: 1250

Recovered 4833.5 bbls

24 hr water 3043.68

24 hr oil "0"

Total water recovered 4833.5 bbls

Total oil recovered "0"

Fluid Rate 2.11 bpm

Total Load to Recover 131,229.5 bbls

18:00 hrs 48 hr period period ends. SWIFN.

NOTE: No sand during flow back operations

No Activity.

Report Start Date: 8/18/2015

Com

No Activity: WSI

HSM & PJSA w/ Keane, TNT, OTG, CHS, EPS. Discuss Scope of Job, SWA, TIF, ERP, PPE, 360 my-space, slips/trips/falls, line of fire, proper lifting, Chevron idling policy, spotters while backing, over-head loads, communication.

WO lightning to pass.

MIRU Keane WLU and pressure control, EPS torque/test unit, CHS HPPT and restrain lines.

WHP: 1450

Prime up pump lines to OTT. Test lines against manifold to 250/7000 psi. Good Test. Equalize to WHP.

WO spreader bar for lubricator

Flush csg to top perf @ 7 bpm @ 2000 psi.

PU 4.625" GR/JB/CCL. Test lubricator 250/4500 psi. Good Test. TIH w/ GR BHA to 9000' correlating w/ SJ @ 8850' - 8860' w/ no issues.

LD GR/JB/CCL. JB clean.



Summary Report

Completion

Complete

Job Start Date: 7/30/2015

Job End Date: 8/28/2015

Well Name GRAMMA RIDGE 14-24-34 005H		Lease Gramma Ridge 14-24-34	Field Name Red Hills North	Business Unit Mid-Continent	
Ground Elevation (ft) 3,500.00	Original RKB (ft) 3,524.50	Current RKB Elevation 3,524.50, 6/12/2015		Mud Line Elevation (ft)	Water Depth (ft)

Com

M/U Baker 20 setting tool and Baker Hornet Wireline Set Production Packer Assembly as follows

ID	OD	Length	Description
2.313"	3.100"	.31'	On/off Tool
2.370"	4.50"	7.63'	HornetPacker
2.441"	2.875"	6.10'	2 7/8" L80 EUE Sub
2.205"	3.28"	1.15'	BXN Nipple
2.441"	2.875"	4.10'	2 7/8" L80 EUE Sub
2.441"	3.70"	0.50'	Pump out plug

Total Length with tailpipe: 19.48'

NOTE: pump out plug pinned at 2028 psi. 6 pins at 338 psi each.

SICP: 1450

TIH w/ Baker Hornet production packer correlating to SJ @ 8,850' - 8,860'. PU mid joint to set top of packer @ 8,830'. Bleed well to "0" psi while POOH beginning negative test.

NOTE: 6 pins in Pump out Plug @ 338 psi each
2028 psi on pins and WHP 1450. Pump
out should be 3478 psi.

LD Baker setting tool BHA.

NOTE: Stone clean out sand OTT.

ND WL flange and BOPE. NU capping flange on crown valve. RDMO WLU and pressure control.

Perform negative test on packer overnight.

Report Start Date: 8/19/2015

Com

Perform negative tes on prod pkr. "0" psi and static.

HSM & PJSA w/ Fesco, OTG, Rig Runner, TNT, GE, EPS Discuss Scope of Job, SWA, TIF, ERP, PPE, Tenet #9 We always follow written proedures for high-risk and unusual situations, proper backing, pinch points, three point contact, line of fire, communication

ND Frac stack to LMV. Set hanger w/ BPV in place and torque pins to spec. ND LMV and NU capping flange. RDMO Fesco FB equipment. OTG clean containment and RDMO. RDMO TNT Crane. Empty FT's. RDMO NOV water transfer.

NOTE: HAL clean up sand.

NOTE: NOV PU FT's

No Activity

Report Start Date: 8/20/2015

Com

No Activity

HSM & PJSA w/ Genco. Discuss Scope of Job, SWA, TIF, ERP, PPE, pinch points, three point contact while climbing, proper lifting, no spill policy, proper backing, communciation

Genco RDMO camp equipment

Report Start Date: 8/25/2015

Com

NO ACTIVITY AT WELL SITE

CREW TRAVEL

SM, JSA REVIEW. CHECK PRESSURES. 0 PSI ON CSG AND TBG.
CALIPER AND LOG ELEVATORS FOR 2-7/8" PROD TBG.

RIG UP PU, REV EQ, L/D MACHINE, AND SPOT IN TANKS.
CHECK PRESSURES ON WELL. 0 PSI ON CSG AND TBG.

N/U 7-1/16" 10M X 7-1/16" 5M SPOOL CLASS III BOP W/ BLIND RAMS ON BOTTOM FOLLOWED BY PIPE RAMS. ALSO N/U ENVIRO-PAN AND RIG FLOOR. CALIPER AND LOG ELEVATORS FOR 2-7/8" TBG.

REMOVE BACK PRESSURE VALVE AND INSTALL HANGER W/ 2-WAY CHECK.

TEST BOP TO 250 PSI LOW/4500 PSI HIGH (PIPE/BLIND RAMS) FOR 5 MINS EACH. GOOD TEST.

REMOVE HANGER AND 2-WAY CHECK.

CONDUCTED WEEKLY SAFETY DRILLS WHILE WAITING FOR TBG TO BE DELIVERED.

OFFLOAD STRAP, AND TALLY 268 JTS OF 2-7/8" 6.5# L-80 PROD TBG ON TO PIPE RACKS.

R/U HYDROSTATIC PIPE TESTERS EQ.



Summary Report

Completion

Complete

Job Start Date: 7/30/2015

Job End Date: 8/28/2015

Well Name GRAMMA RIDGE 14-24-34 005H		Lease Gramma Ridge 14-24-34	Field Name Red Hills North	Business Unit Mid-Continent	
Ground Elevation (ft) 3,500.00	Original RKB (ft) 3,524.50	Current RKB Elevation 3,524.50, 6/12/2015		Mud Line Elevation (ft)	Water Depth (ft)

Com

RIH W/ BAKER 4.50" OD, 1.5' LENGTH L-10 ON/OFF TOOL AND 140 JTS OF 2-7/8" 6.5# L-80 TBG TO 4480'. HYDRO TESTING TO 6000 PSI.
R/D HYDRO TESTERS

SECURE WELL. SIFN

CREW TRAVEL

NO ACTIVITY AT WELL SITE

Report Start Date: 8/26/2015

Com

NO ACTIVITY AT WELL SITE

CREW TRAVEL

SM, JSA REVIEW. CHECK PRESSURES. 0 PSI ON CSG AND TBG.
CALIPER AND LOG ELEVATORS FOR 2-7/8" PROD TBG.

RIH W/ 130 JTS OF 2-7/8" 6.5# L-80 TBG AND 30' OF SUBS. (10', 8', 6', 4', & 2') TO 8115'. HYDRO TESTING TO 6000 PSI.

SPACE OUT TBG AND PULL UP 4' TO DISPLACE HOLE W/ PKR FLUID.

R/D HYDRO STATIC PIPE TESTERS

R/U REV EQ TO DISPLACE PKR FLUID

CIRC AND DISPLACE HOLE W/ 200 BBLS OF 2% KCL PKR FLUID W/ CORROSION INHIBITOR. PUMPING CONVENTIONAL @ 1.8 BPM @ 250 PSI.

LATCH ON TO ON/OFF TOOL. PULL 20 PTS TO ENSURE LATCHED. SET PKR W/ 17 PTS COMPRESSION.
LAND TBG HANGER IN WH.

SET BPV
R/D RIG FLOOR
N/D BOP

N/U 5K FLOW TREE
TEST VOIDS TO 8000 PSI FOR 10 MINS. GOOD TEST.
REMOVE BPV
INSTALL 2-WAY CHECK VALVE

R/U LOBO PUMP TRUCK

TEST VALVES AND COMPONENTS ON TREE TO 4000 PSI FOR 10 MINS. GOOD TEST.

RETRIEVE 2-WAY CHECK.

PUMP OUT PLUG @ 3400 PSI. PUMP ADDITIONAL 5 BBLS OF FRESH WATER TO VERIFY PLUG BURST.

R/D LOBO PUMP TRUCK

SITP = 1400 PSI
FLOW BACK FOR 60 MINS. RECOVERED 120 BBLS. @ 110 PSI.

SI WELL

CREW TRAVEL

NO ACTIVITY AT WELL SITE

Report Start Date: 8/27/2015

Com

NO ACTIVITY AT WELL SITE

CREW TRAVEL

SM, JSA REVIEW. CHECK PRESSURES. 0 PSI ON CSG AND TBG.

R/D PU AND REV EQ

MOVE TO STATE 2 #8

FINAL REPORT

Report Start Date: 9/23/2015

Com

SM, JSA REVIEW FOR TODAYS OPS.

MIRU SL TRUCK AND LOBO PUMP TRUCK.
TEST LUBRICATOR TO 2000 PSI. GOOD TEST.

PUMP 70 BBLS OF 11.0 PPG BRINE WATER DOWN TBG @ 1.8 BPM DOWN TO BOTTOM OF PERFS @ 9690'.
WELL ON VACUUM.

RIH W/ 2.347" GAUGE RING TO ON/OFF TOOL @ 8802' FROM GROUND LEVEL. POOH W/ GAUGE RING.



Summary Report

Completion

Complete

Job Start Date: 7/30/2015

Job End Date: 8/28/2015

Well Name GRAMMA RIDGE 14-24-34 005H		Lease Gramma Ridge 14-24-34	Field Name Red Hills North	Business Unit Mid-Continent	
Ground Elevation (ft) 3,500.00	Original RKB (ft) 3,524.50	Current RKB Elevation 3,524.50, 6/12/2015		Mud Line Elevation (ft)	Water Depth (ft)

Com

PU AND RIH W/ 2.313" OTIS XXD BLANKING PLUG AND SET AT 8802' IN "X" TYPE PN. POOH W/ SL

SECURE WELL

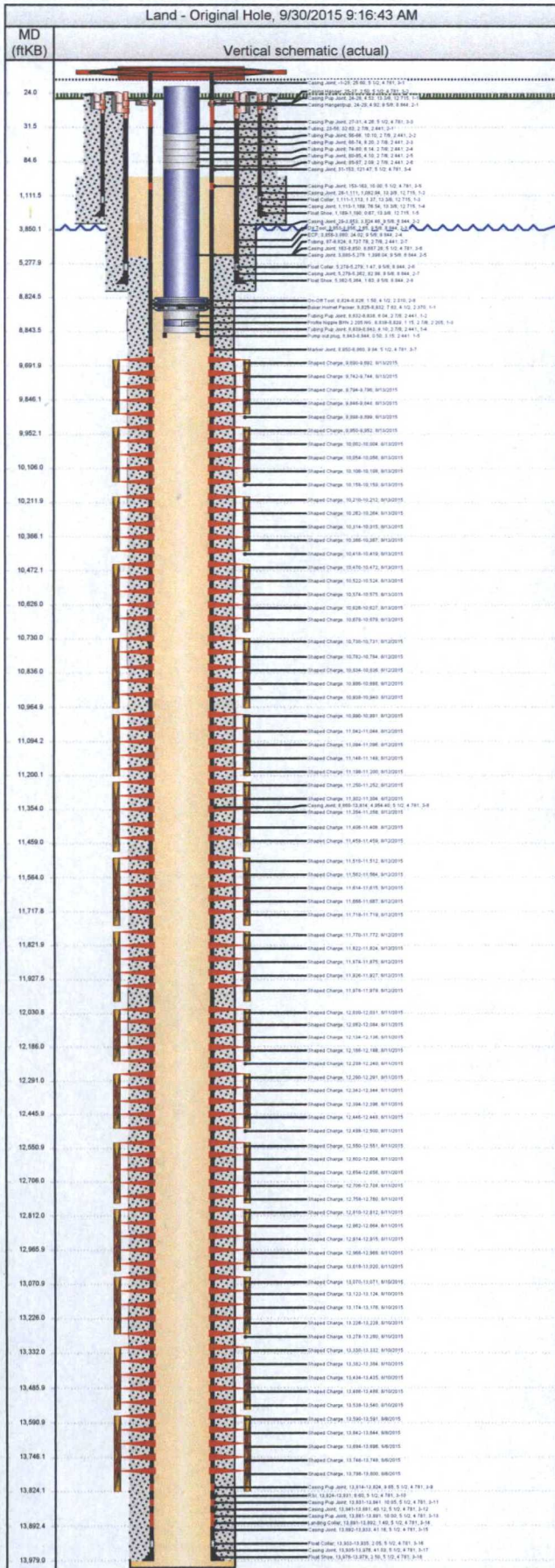


Job Details					
Job Category			Start Date		Rig/Unit End Date
Completion			7/30/2015		7/31/2015
Completion			7/31/2015		8/3/2015
Completion			8/3/2015		8/14/2015
Completion			8/14/2015		8/15/2015
Completion			8/15/2015		8/18/2015
Completion			8/18/2015		8/18/2015
Completion			8/25/2015		8/28/2015
Completion			9/23/2015		9/23/2015
Casing Strings					
Csg Des	OD (in)	Wt/Len (lb/ft)	Grade	Top Thread	Set Depth (MD) (ftKB)
Surface	13 3/8	48.00	H-40		1,190
Intermediate Casing 1	9 5/8	40.00	HCK-55	ST&C	5,364
Production Casing	5 1/2	20.00	P-110		13,979
Tubing Strings					
Tubing - Production set at 8,844.0ftKB on 8/18/2015 18:30					
Tubing Description		Run Date	String Length (ft)		Set Depth (MD) (ftKB)
Tubing - Production		8/18/2015	19.42		8,844.0
Item Des	Jts	OD (in)	Wt (lb/ft)	Grade	Len (ft)
Baker Hornet Packer	1	4 1/2			7.63
Tubing Pup Joint	1	2 7/8	6.50	L-80	6.04
Profile Nipple BXN 2.205 NG	1	2 7/8			1.15
Tubing Pup Joint	1	2 7/8	6.50	L-80	4.10
Pump out plug	1	3.15			0.50
Tubing - Production set at 8,825.9ftKB on 8/26/2015 11:00					
Tubing Description		Run Date	String Length (ft)		Set Depth (MD) (ftKB)
Tubing - Production		8/26/2015	8,802.53		8,825.9
Item Des	Jts	OD (in)	Wt (lb/ft)	Grade	Len (ft)
Tubing	1	2 7/8	6.50	L-80	32.63
Tubing Pup Joint	1	2 7/8	6.50	L-80	10.10
Tubing Pup Joint	1	2 7/8	6.50	L-80	8.20
Tubing Pup Joint	1	2 7/8	6.50	L-80	6.14
Tubing Pup Joint	1	2 7/8	6.50	L-80	4.10
Tubing Pup Joint	1	2 7/8	6.50	L-80	2.08
Tubing	269	2 7/8	6.50	L-80	8,737.78
On-Off Tool	1	4 1/2			1.50
Perforations					
Date	Top (ftKB)	Btm (ftKB)	Shot Dens (shots/ft)	Entered Shot Total	Zone & Completion
8/13/2015	9,690.0	9,692.0	6.0	6	Bone Spring, Original Hole
8/13/2015	9,742.0	9,744.0	6.0	9	Bone Spring, Original Hole
8/13/2015	9,794.0	9,795.5	6.0	9	Bone Spring, Original Hole
8/13/2015	9,846.0	9,847.5	6.0	12	Bone Spring, Original Hole
8/13/2015	9,898.0	9,899.0	6.0	12	Bone Spring, Original Hole
8/13/2015	9,950.0	9,952.0	6.0	6	Bone Spring, Original Hole
8/13/2015	10,002.0	10,004.0	6.0	9	Bone Spring, Original Hole
8/13/2015	10,054.0	10,055.5	6.0	9	Bone Spring, Original Hole
8/13/2015	10,106.0	10,107.5	6.0	12	Bone Spring, Original Hole
8/13/2015	10,158.0	10,159.0	6.0	12	Bone Spring, Original Hole
8/13/2015	10,210.0	10,212.0	6.0	6	Bone Spring, Original Hole
8/13/2015	10,262.0	10,264.0	6.0	9	Bone Spring, Original Hole
8/13/2015	10,314.0	10,315.5	6.0	9	Bone Spring, Original Hole



Wellbore Schematic

Well Name GRAMMA RIDGE 14-24-34 005H	Lease Gramma Ridge 14-24-34	Field Name Red Hills North	Business Unit Mid-Continent
---	--------------------------------	-------------------------------	--------------------------------



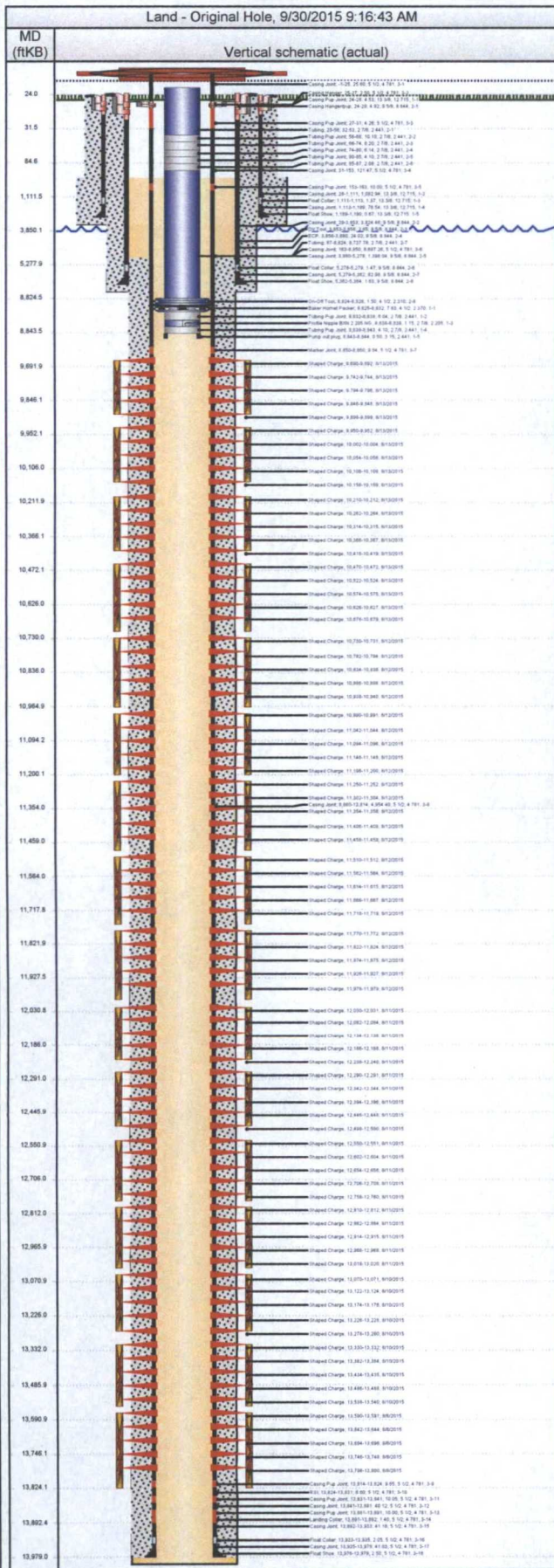
Perforations					
Date	Top (ftKB)	Btm (ftKB)	Shot Dens (shots/ft)	Entered Shot Total	Zone & Completion
8/13/2015	10,366.0	10,367.5	6.0	12	Bone Spring, Original Hole
8/13/2015	10,418.0	10,419.0	6.0	12	Bone Spring, Original Hole
8/13/2015	10,470.0	10,472.0	6.0	6	Bone Spring, Original Hole
8/13/2015	10,522.0	10,524.0	6.0	9	Bone Spring, Original Hole
8/13/2015	10,574.0	10,575.5	6.0	9	Bone Spring, Original Hole
8/13/2015	10,626.0	10,627.5	6.0	12	Bone Spring, Original Hole
8/13/2015	10,678.0	10,679.0	6.0	12	Bone Spring, Original Hole
8/12/2015	10,730.0	10,731.0	6.0	6	Bone Spring, Original Hole
8/12/2015	10,782.0	10,784.0	6.0	9	Bone Spring, Original Hole
8/12/2015	10,834.0	10,836.0	6.0	9	Bone Spring, Original Hole
8/12/2015	10,886.0	10,888.0	6.0	12	Bone Spring, Original Hole
8/12/2015	10,938.0	10,940.0	6.0	12	Bone Spring, Original Hole
8/12/2015	10,990.0	10,991.0	6.0	6	Bone Spring, Original Hole
8/12/2015	11,042.0	11,044.0	6.0	9	Bone Spring, Original Hole
8/12/2015	11,094.0	11,096.0	6.0	9	Bone Spring, Original Hole
8/12/2015	11,146.0	11,148.0	6.0	12	Bone Spring, Original Hole
8/12/2015	11,198.0	11,200.0	6.0	12	Bone Spring, Original Hole
8/12/2015	11,250.0	11,252.0	6.0	6	Bone Spring, Original Hole
8/12/2015	11,302.0	11,304.0	6.0	9	Bone Spring, Original Hole
8/12/2015	11,354.0	11,355.5	6.0	9	Bone Spring, Original Hole
8/12/2015	11,406.0	11,407.5	6.0	12	Bone Spring, Original Hole
8/12/2015	11,458.0	11,459.0	6.0	12	Bone Spring, Original Hole
8/12/2015	11,510.0	11,512.0	6.0	6	Bone Spring, Original Hole
8/12/2015	11,562.0	11,564.0	6.0	9	Bone Spring, Original Hole
8/12/2015	11,614.0	11,615.5	6.0	9	Bone Spring, Original Hole
8/12/2015	11,666.0	11,667.5	6.0	12	Bone Spring, Original Hole
8/12/2015	11,718.0	11,719.0	6.0	12	Bone Spring, Original Hole
8/12/2015	11,770.0	11,772.0	6.0	6	Bone Spring, Original Hole
8/12/2015	11,822.0	11,824.0	6.0	9	Bone Spring, Original Hole
8/12/2015	11,874.0	11,875.5	6.0	9	Bone Spring, Original Hole

Report Printed: 9/30/2015



Wellbore Schematic

Well Name	Lease	Field Name	Business Unit
GRAMMA RIDGE 14-24-34 005H	Gramma Ridge 14-24-34	Red Hills North	Mid-Continent



Perforations					
Date	Top (ftKB)	Btm (ftKB)	Shot Dens (shots/ft)	Entered Shot Total	Zone & Completion
8/10/2015	13,486.0	13,487.5	6.0	12	Bone Spring, Original Hole
8/10/2015	13,538.0	13,540.0	6.0	12	Bone Spring, Original Hole
8/8/2015	13,590.0	13,591.0	6.0	6	Bone Spring, Original Hole
8/8/2015	13,642.0	13,644.0	6.0	9	Bone Spring, Original Hole
8/8/2015	13,694.0	13,696.0	6.0	9	Bone Spring, Original Hole
8/8/2015	13,746.0	13,748.0	6.0	12	Bone Spring, Original Hole
8/8/2015	13,798.0	13,800.0	6.0	12	Bone Spring, Original Hole

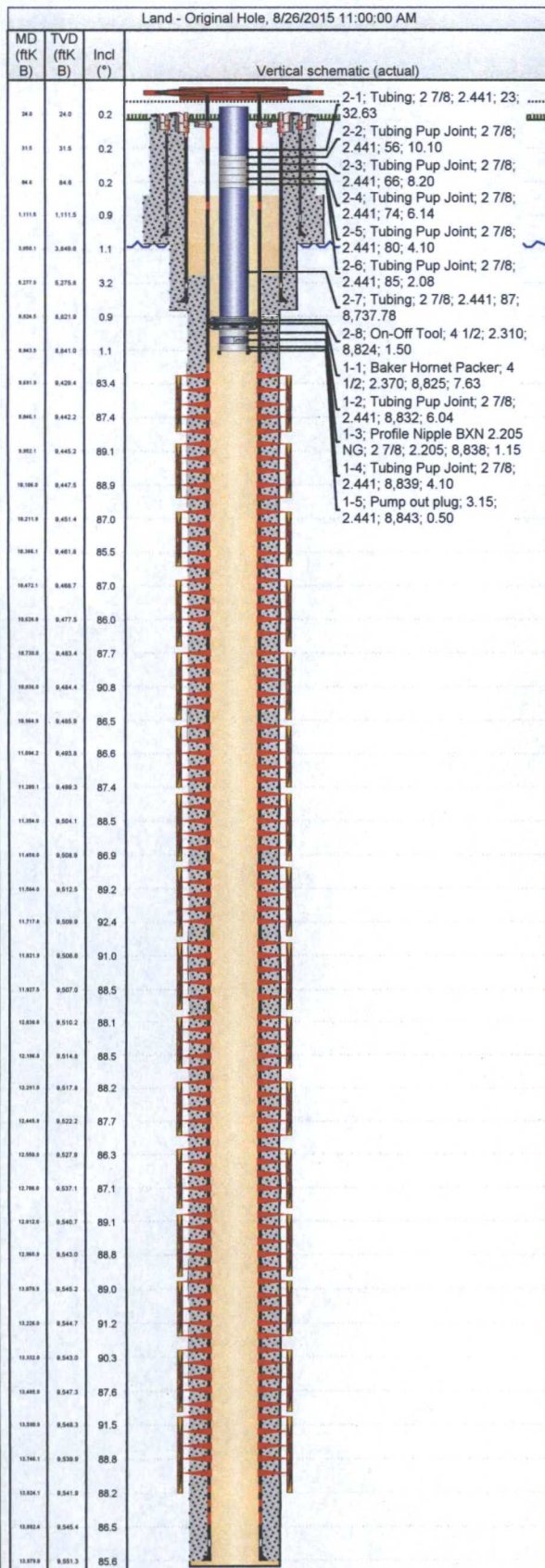
Other Strings				
Run Date	Pull Date	Set Depth (ftKB)	Com	

Other In Hole					
Des	Top (ftKB)	Btm (ftKB)	Run Date	Pull Date	Com
Composite Frac Plug (drop ball)	9,924.0	9,926.0	8/13/2015	8/14/2015	Stage 16
Composite Frac Plug (drop ball)	10,184.0	10,186.0	8/13/2015	8/14/2015	Stage 15
Composite Frac Plug (drop ball)	10,444.0	10,446.0	8/13/2015	8/14/2015	Stage 14
Composite Frac Plug (drop ball)	10,704.0	10,706.0	8/13/2015	8/14/2015	Stage 13
Composite Frac Plug (drop ball)	10,964.0	10,966.0	8/12/2015	8/14/2015	Stage 12
Composite Frac Plug (drop ball)	11,220.0	11,222.0	8/12/2015	8/15/2015	Stage 11
Composite Frac Plug (drop ball)	11,484.0	11,486.0	8/12/2015	8/15/2015	Stage 10
Composite Frac Plug (drop ball)	11,740.0	11,742.0	8/12/2015	8/15/2015	Stage 9
Composite Frac Plug (drop ball)	12,004.0	12,006.0	8/12/2015	8/15/2015	Stage 8
Composite Frac Plug (drop ball)	12,260.0	12,262.0	8/11/2015	8/15/2015	Stage 7
Composite Frac Plug (drop ball)	12,524.0	12,526.0	8/11/2015	8/15/2015	Stage 6
Composite Frac Plug (drop ball)	12,780.0	12,782.0	8/11/2015	8/15/2015	Stage 5
Composite Frac Plug (drop ball)	13,044.0	13,046.0	8/11/2015	8/15/2015	Stage 4
Composite Frac Plug (drop ball)	13,304.0	13,306.0	8/10/2015	8/15/2015	Stage 3
Composite Frac Plug (drop ball)	13,564.0	13,566.0	8/10/2015	8/15/2015	Stage 2



Tubing Summary

Well Name GRAMMA RIDGE 14-24-34 005H	Lease Gramma Ridge 14-24-34	Field Name Red Hills North	Business Unit Mid-Continent
Ground Elevation (ft) 3,500.00	Original RKB Elevation (ft) 3,524.50	Current RKB Elevation 3,524.50, 6/12/2015	Mud Line Elevation (ft) Water Depth (ft)
Current KB to Ground (ft) 24.50	Current KB to Mud Line (ft)	Current KB to Csg Flange (ft)	Current KB to Tubing Head (ft)



Tubing Strings									
Tubing Description Tubing - Production		Planned Run? N		Set Depth (MD) (ftKB) 8,825.9		Set Depth (TVD) (ftKB) 8,823.4			
Run Date 8/26/2015		Run Job Complete, 7/30/2015 00:00		Pull Date		Pull Job			
Jts	Item Des	OD (in)	ID (in)	Wt (lb/ft)	Grade	Top Thread	Len (ft)	Top (ftKB)	Btm (ftKB)
1	Tubing	2 7/8	2.441	6.50	L-80		32.63	23.4	56.0
1	Tubing Pup Joint	2 7/8	2.441	6.50	L-80		10.10	56.0	66.1
1	Tubing Pup Joint	2 7/8	2.441	6.50	L-80		8.20	66.1	74.3
1	Tubing Pup Joint	2 7/8	2.441	6.50	L-80		6.14	74.3	80.4
1	Tubing Pup Joint	2 7/8	2.441	6.50	L-80		4.10	80.4	84.5
1	Tubing Pup Joint	2 7/8	2.441	6.50	L-80		2.08	84.5	86.6
269	Tubing	2 7/8	2.441	6.50	L-80		8,737.78	86.6	8,824.4
1	On-Off Tool	4 1/2	2.310				1.50	8,824.4	8,825.9

Rod Strings			
Rod Description	Planned Run?	Set Depth (ftKB)	Set Depth (TVD) (ftKB)
Run Date	Run Job	Pull Date	Pull Job

Rod Components							
Jts	Item Des	OD (in)	Grade	Model	Len (ft)	Top (ftKB)	Btm (ftKB)