

District I  
1625 N. French Dr., Hobbs, NM 88240  
Phone: (575) 393-6161 Fax: (575) 393-0720  
District II  
811 S. First St., Artesia, NM 88210  
Phone: (575) 748-1283 Fax: (575) 748-9720  
District III  
1000 Rio Brazos Road, Aztec, NM 87410  
Phone: (505) 334-6178 Fax: (505) 334-6170  
District IV  
1220 S. St. Francis Dr., Santa Fe, NM 87505  
Phone: (505) 476-3460 Fax: (505) 476-3462

State of New Mexico  
Energy, Minerals & Natural Resources  
Department  
OIL CONSERVATION DIVISION  
1220 South St. Francis Dr.  
Santa Fe, NM 87505

NM OIL CONSERVATION

ARTESIA DISTRICT

FORM C-102

NOV 19 2015

Revised August 1, 2011

Submit one copy to appropriate

District Office

RECEIVED

☐ AMENDED REPORT

WELL LOCATION AND ACREAGE DEDICATION PLAT

<sup>1</sup> API Number 30-025- <b>43017</b>	<sup>2</sup> Pool Code 98097	<sup>3</sup> Pool Name WC-025 G-09 S263327G; Upper Wolfcamp
<sup>4</sup> Property Code <b>315667</b>	<sup>5</sup> Property Name BARLOW 27 FED COM	<sup>6</sup> Well Number #701H
<sup>7</sup> OGRID No. 7377	<sup>8</sup> Operator Name EOG RESOURCES, INC.	<sup>9</sup> Elevation 3313'

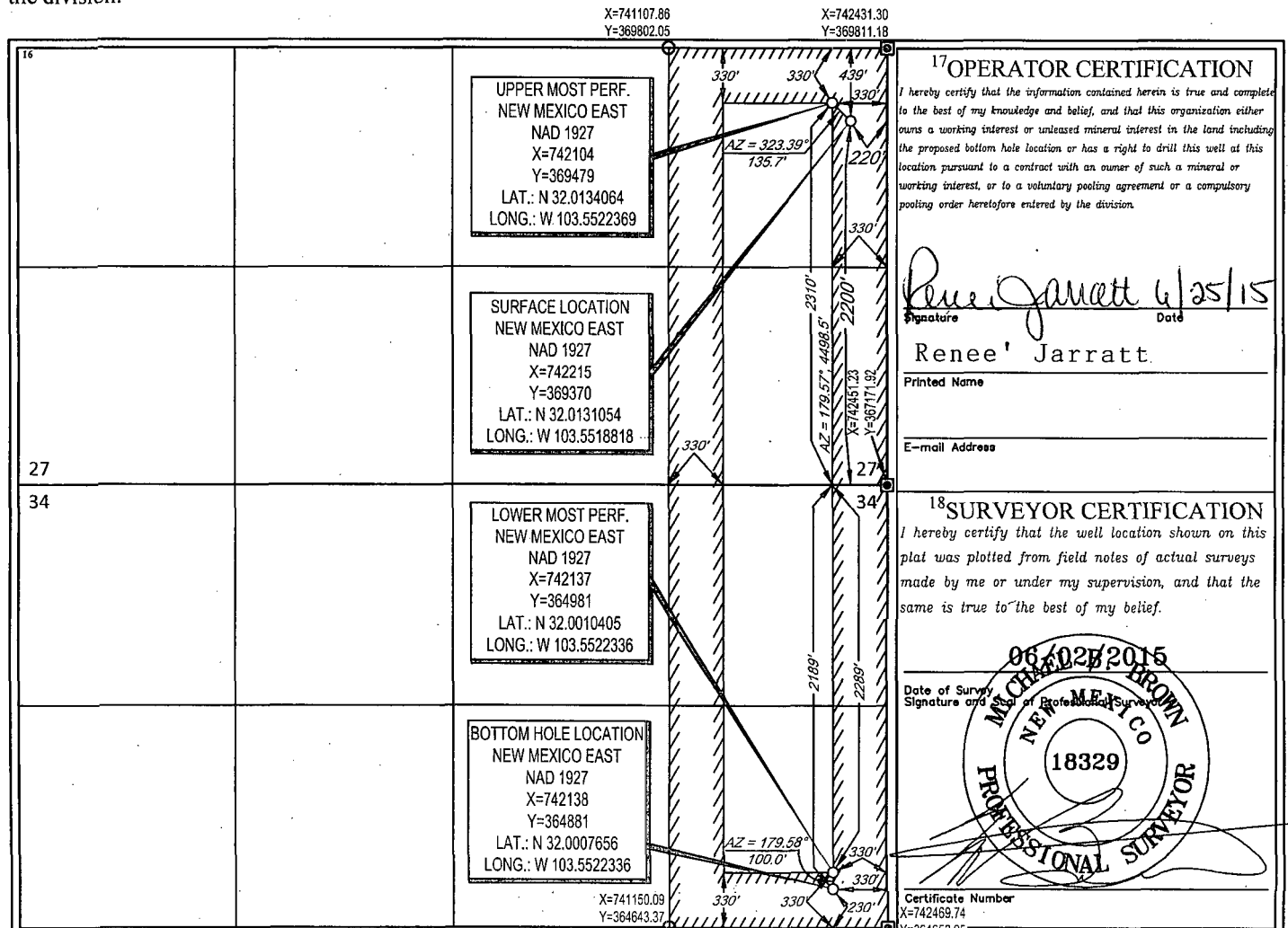
<sup>10</sup>Surface Location

UL or lot no.	Section	Township	Range	Lot Idn	Feet from the	North/South line	Feet from the	East/West line	County
I	27	26-S	33-E	-	2200'	SOUTH	220'	EAST	LEA

UL or lot no.	Section	Township	Range	Lot Idn	Feet from the	North/South line	Feet from the	East/West line	County
H	34	26-S	33-E	-1	230'	SOUTH	330'	EAST	LEA

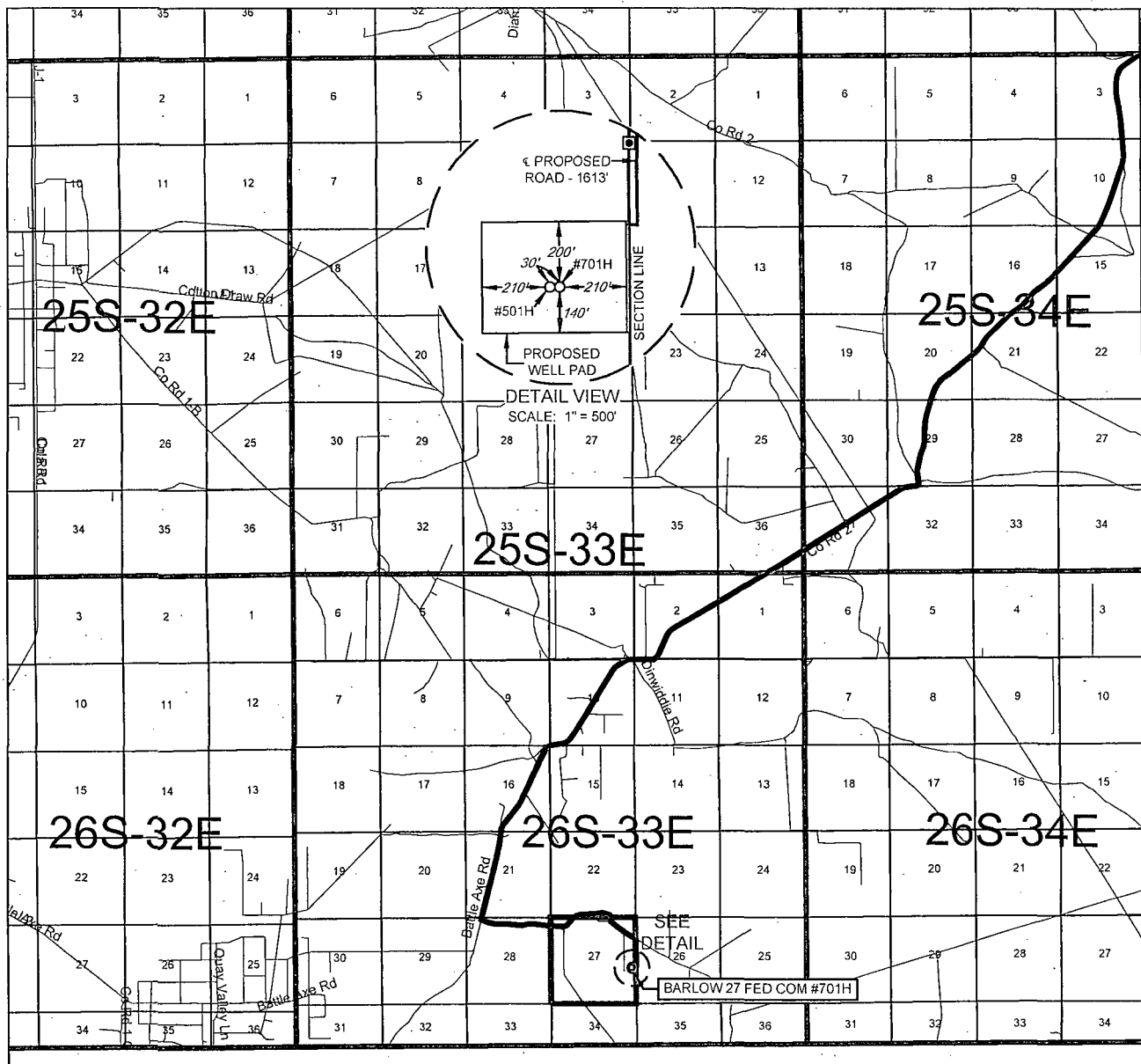
<sup>12</sup> Dedicated Acres 156.52	<sup>13</sup> Joint or Infill	<sup>14</sup> Consolidation Code	<sup>15</sup> Order No.
---	-------------------------------	----------------------------------	-------------------------

No allowable will be assigned to this completion until all interests have been consolidated or a non-standard unit has been approved by the division.



JAN 14 2016

# EXHIBIT 2 VICINITY MAP



LEASE NAME & WELL NO.: BARLOW 27 FED COM #701H

SECTION 27 TWP 26-S RGE 33-E SURVEY N.M.P.M.

COUNTY LEA STATE NM

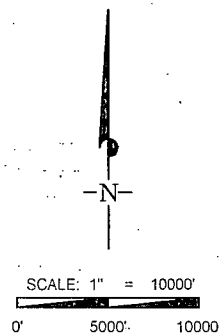
DESCRIPTION 2200' FSL & 220' FEL

## DISTANCE & DIRECTION

FROM INT. OF NM-18 N. & NM-128, GO WEST ON NM-128 ±14.1 MILES.  
THENCE SOUTHWEST (LEFT) ON BATTLE AXE RD. ±17.1 MILES. THENCE  
EAST (LEFT) ON LEASE RD. ±2.1 MILES, THENCE SOUTH (RIGHT) ON A  
PROPOSED RD. ±1613 FEET TO A POINT ±283 FEET NORTHEAST OF  
THIS LOCATION.

THIS EASEMENT/SERVITUDE LOCATION SHOWN HEREON HAS BEEN SURVEYED ON THE GROUND UNDER MY SUPERVISION AND PREPARED ACCORDING TO THE EVIDENCE FOUND AT THE TIME OF SURVEY, AND DATA PROVIDED BY EOG RESOURCES, INC. THIS CERTIFICATION IS MADE AND LIMITED TO THOSE PERSONS OR ENTITIES SHOWN ON THE FACE OF THIS PLAT AND IS NON-TRANSFERABLE. THIS SURVEY IS CERTIFIED FOR THIS TRANSACTION ONLY.

ALL BEARINGS, DISTANCES, AND COORDINATE VALUES CONTAINED HEREON ARE GRID BASED UPON THE NEW MEXICO STATE PLANE COORDINATE SYSTEM, EAST ZONE OF THE NORTH AMERICAN DATUM 1927, U.S. SURVEY FEET.



**TOPOGRAPHIC**  
'LOYALTY' INNOVATION LEGACY

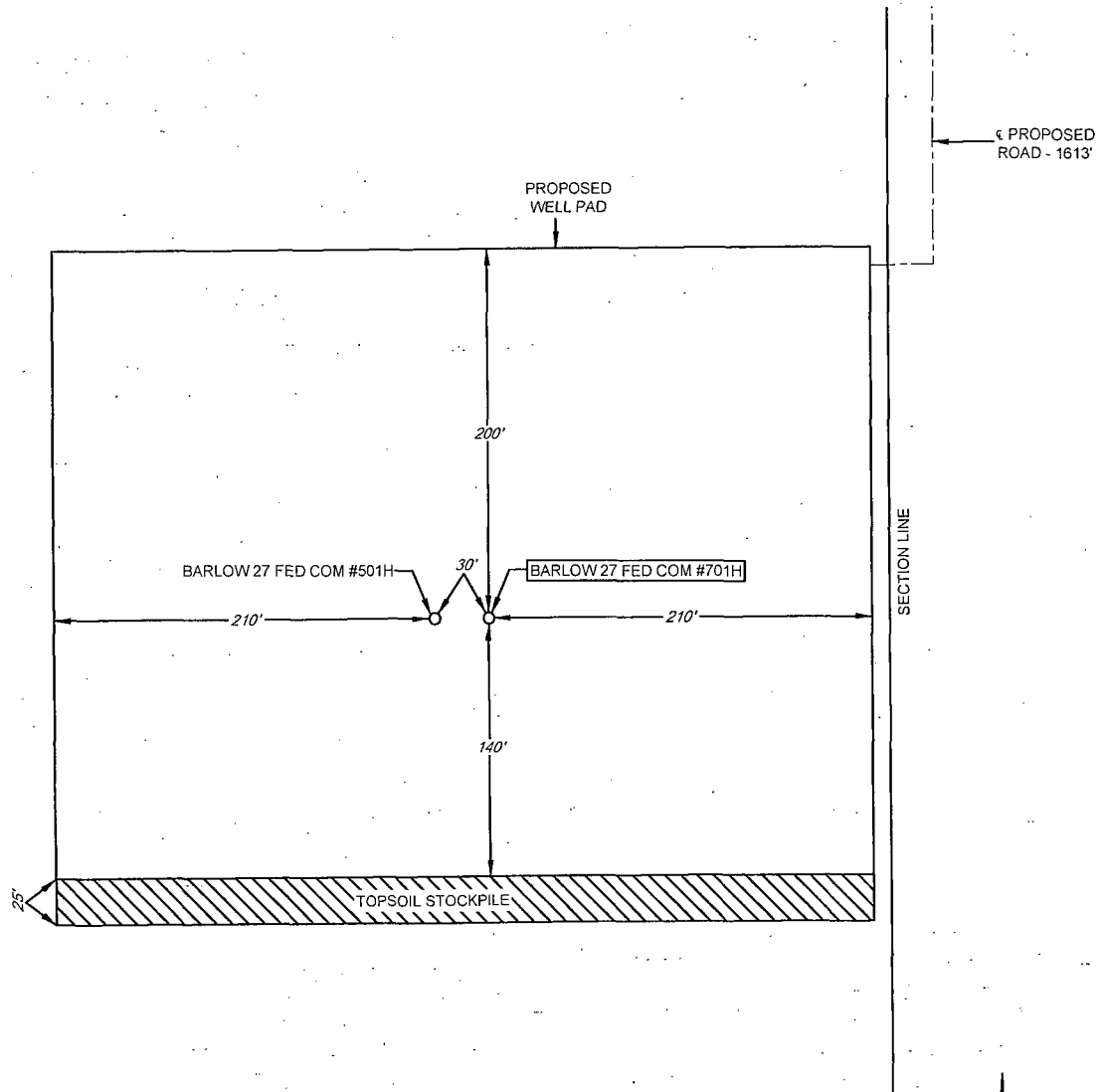
1400 EVERMAN PARKWAY, Ste. 197 • FT. WORTH, TEXAS 76140  
TELEPHONE: (817) 744-7512 • FAX (817) 744-7548  
2903 NORTH BIG SPRING • MIDLAND, TEXAS 79705  
TELEPHONE: (432) 682-1653 OR (800) 767-1653 • FAX (432) 682-1743  
WWW.TOPOGRAPHIC.COM



# EXHIBIT 2B

SECTION 27, TOWNSHIP 26-S, RANGE 33-E, N.M.P.M.  
LEA COUNTY, NEW MEXICO

DETAIL VIEW  
SCALE: 1" = 100'



LEASE NAME & WELL NO.: BARLOW 27 FED COM #701H  
#701H LATITUDE LAT.: N 32.0131054 #701H LONGITUDE LONG.: W 103.5518818

## LEGEND

== == == == EXISTING ROAD  
--- SECTION LINE  
- - - - - PROPOSED ROAD

SCALE: 1" = 100'  
0' 50' 100'

ALL BEARINGS, DISTANCES, AND COORDINATE VALUES CONTAINED HEREON ARE GRID BASED UPON THE NEW MEXICO STATE PLANE COORDINATE SYSTEM, EAST ZONE OF THE NORTH AMERICAN DATUM 1927, U.S. SURVEY FEET

THIS PROPOSED PAD SITE LOCATION SHOWN HEREON HAS BEEN SURVEYED ON THE GROUND UNDER MY SUPERVISION AND PREPARED ACCORDING TO THE EVIDENCE FOUND AT THE TIME OF SURVEY, AND DATA PROVIDED BY EOG RESOURCES, INC. THIS CERTIFICATION IS MADE AND LIMITED TO THOSE PERSONS OR ENTITIES SHOWN ON THE FACE OF THIS PLAT AND IS NON-TRANSFERABLE. THIS SURVEY IS CERTIFIED FOR THIS TRANSACTION ONLY.

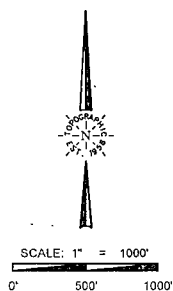
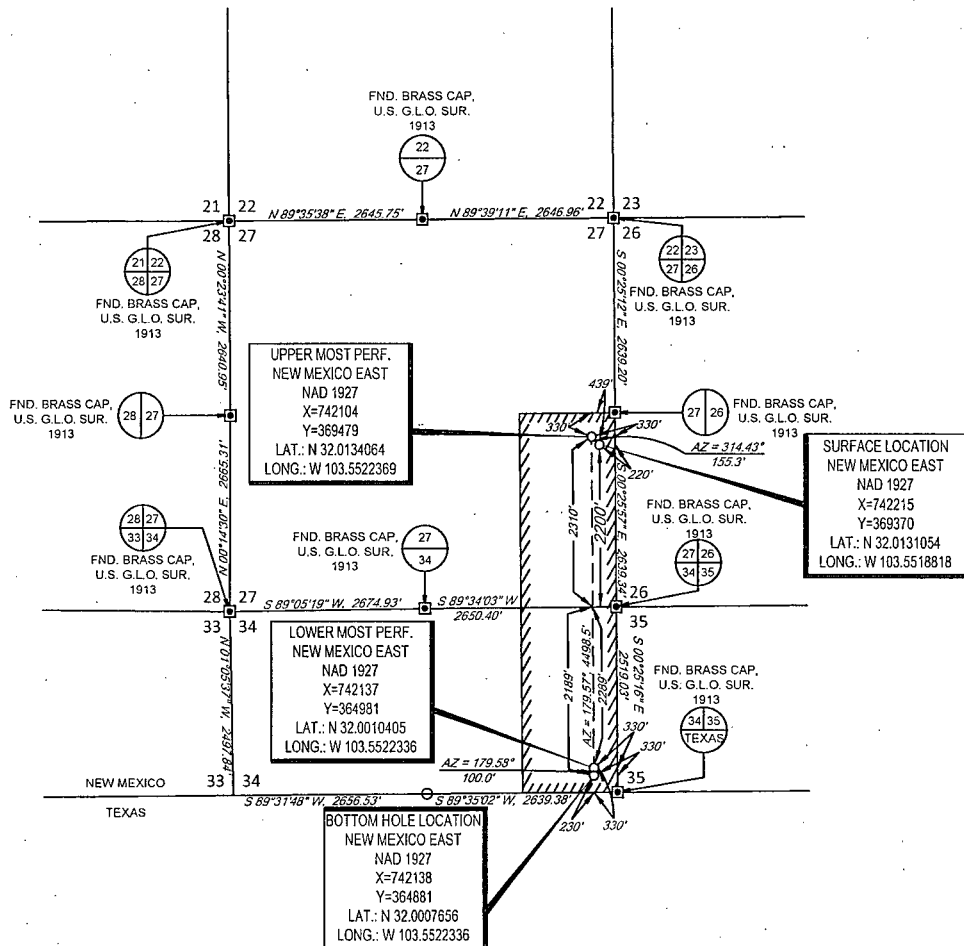


1400 EVERMAN PARKWAY, Ste. 197 • FT. WORTH, TEXAS 76140  
TELEPHONE: (817) 744-7512 • FAX (817) 744-7548  
2903 NORTH BIG SPRING • MIDLAND, TEXAS 79705  
TELEPHONE: (432) 682-1653 OR (800) 767-1653 • FAX (432) 682-1743  
WWW.TOPOGRAPHIC.COM

ORIGINAL DOCUMENT SIZE: 8.5" X 11"

**EXHIBIT 2A**

SECTION 27, TOWNSHIP 26-S, RANGE 33-E, N.M.P.M.  
LEA COUNTY, NEW MEXICO



LEASE NAME & WELL NO.: BARLOW 27 FED COM #701H

SECTION 27 TWP 26-S RGE 33-E SURVEY N.M.P.M.  
COUNTY LEA STATE NM  
DESCRIPTION 2200' FSL & 220' FEL

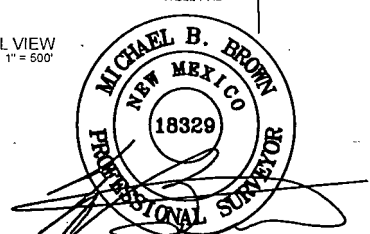
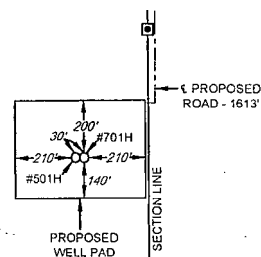
**DISTANCE & DIRECTION**

FROM INT. OF NM-18 N. & NM-128, GO WEST ON NM-128  $\pm 14.1$   
MILES, THENCE SOUTHWEST (LEFT) ON BATTLE AXE RD.  $\pm 17.1$   
MILES, THENCE EAST (LEFT) ON LEASE RD.  $\pm 2.1$  MILES, THENCE  
SOUTH (RIGHT) ON A PROPOSED RD.  $\pm 1613$  FEET TO A POINT  
 $\pm 283$  FEET NORTHEAST OF THIS LOCATION.

ALL BEARINGS, DISTANCES, AND COORDINATE VALUES CONTAINED HEREON ARE GRID  
BASED UPON THE NEW MEXICO STATE PLANE COORDINATE SYSTEM, EAST ZONE OF THE  
NORTH AMERICAN DATUM 1927, U.S. SURVEY FEET

THIS EASEMENT/SERVITUDE LOCATION SHOWN HEREON HAS BEEN SURVEYED ON THE GROUND  
UNDER MY SUPERVISION AND PREPARED ACCORDING TO THE EVIDENCE FOUND AT THE TIME OF  
SURVEY, AND DATA PROVIDED BY EOG RESOURCES, INC. THIS CERTIFICATION IS MADE AND LIMITED  
TO THOSE PERSONS OR ENTITIES SHOWN ON THE FACE OF THIS PLAN AND IS NON-TRANSFERABLE.  
THIS SURVEY IS CERTIFIED FOR THIS TRANSACTION ONLY.

DETAIL VIEW  
SCALE: 1" = 500'



Michael Blake Brown, P.S. No. 18329  
JUNE 02, 2015



**TOPOGRAPHIC**  
LOYALTY INNOVATION LEGACY

1400 EVERMAN PARKWAY, Ste. 197 • FT. WORTH, TEXAS 76140  
TELEPHONE: (817) 744-7512 • FAX: (817) 744-7548  
2903 NORTH BAS SPRING • MIDLAND, TEXAS 79705  
TELEPHONE: (432) 652-1553 OR (800) 767-1653 • FAX: (432) 652-1743  
WWW.TOPOGRAPHIC.COM

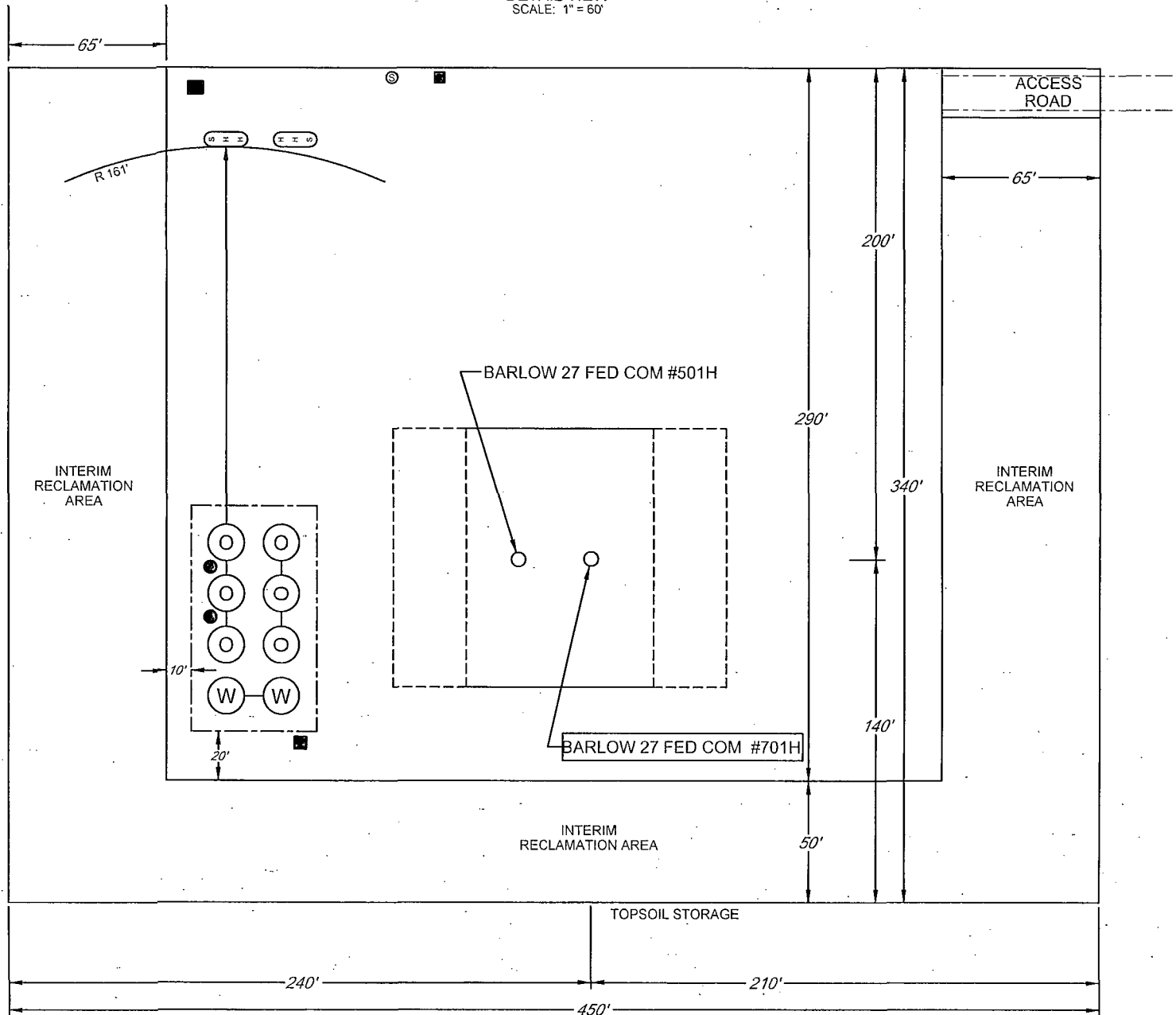
# EXHIBIT 2C

## RECLAMATION AND FACILITY DIAGRAM - PRODUCTION FACILITIES DIAGRAM

SECTION 27, TOWNSHIP 26-S, RANGE 33-E, N.M.P.M.  
LEA COUNTY, NEW MEXICO

DETAIL VIEW  
SCALE: 1" = 60'

N



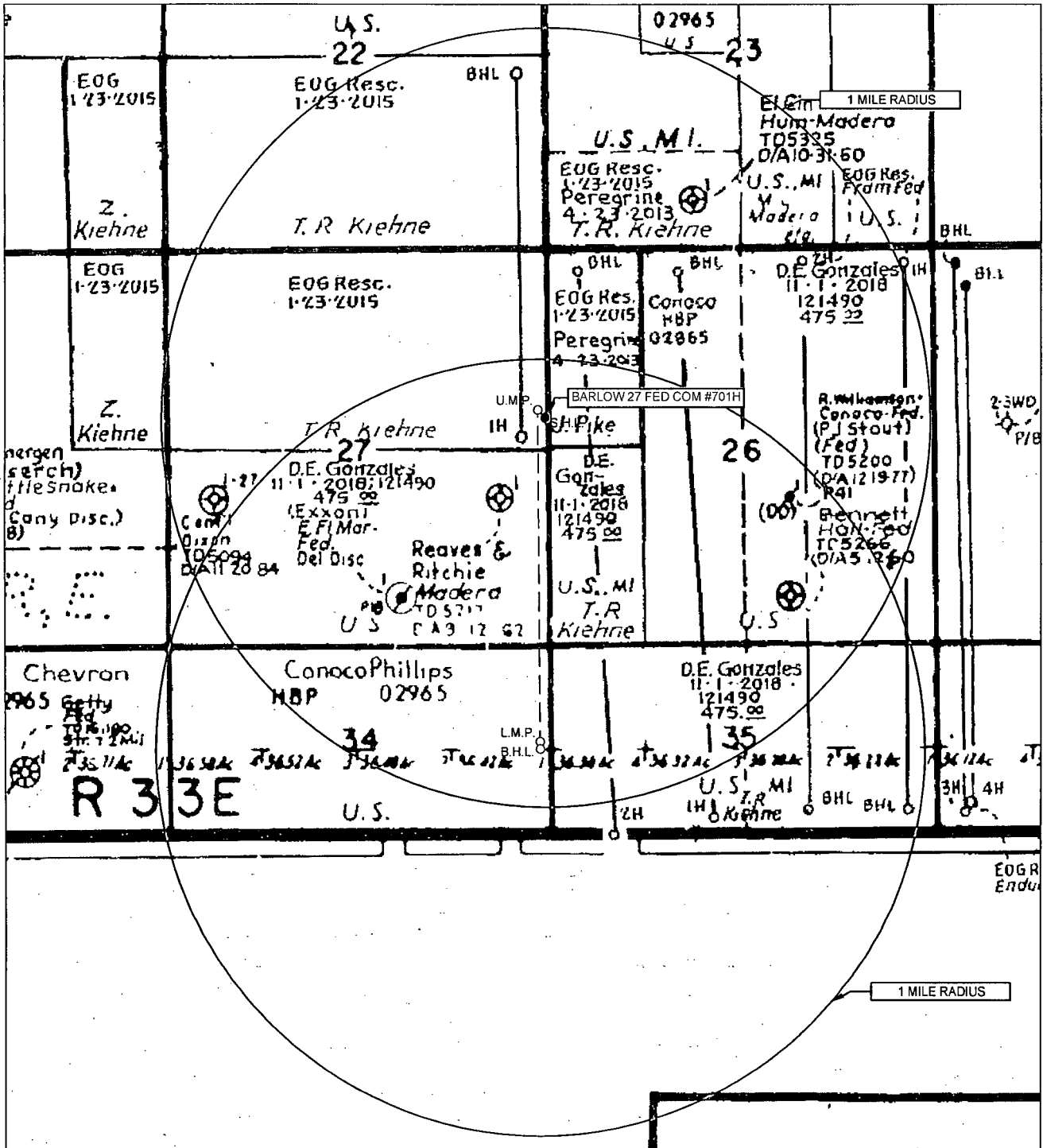
LEASE NAME & WELL NO.: BARLOW 27 FED COM #701H  
#701H LATITUDE LAT.: N 32.0131054 #701H LONGITUDE LONG.: W 103.5518818

### LEGEND

	500 BBL OIL TANK		FLARE SEPARATOR
	500 BBL WATER TANK		VRU
	36 x 15 HEATER/SEPARATOR		48 X 25 VRT
			FP FLARE
			OP FLARE

# EXHIBIT 3

SECTION 27, TOWNSHIP 26-S, RANGE 33-E, N.M.P.M.  
LEA COUNTY, NEW MEXICO



LEASE NAME & WELL NO.: BARLOW 27 FED COM #701H

SCALE: NTS

#701H LATITUDE LAT.: N 32.0131054

#701H LONGITUDE LONG.: W 103.5518818

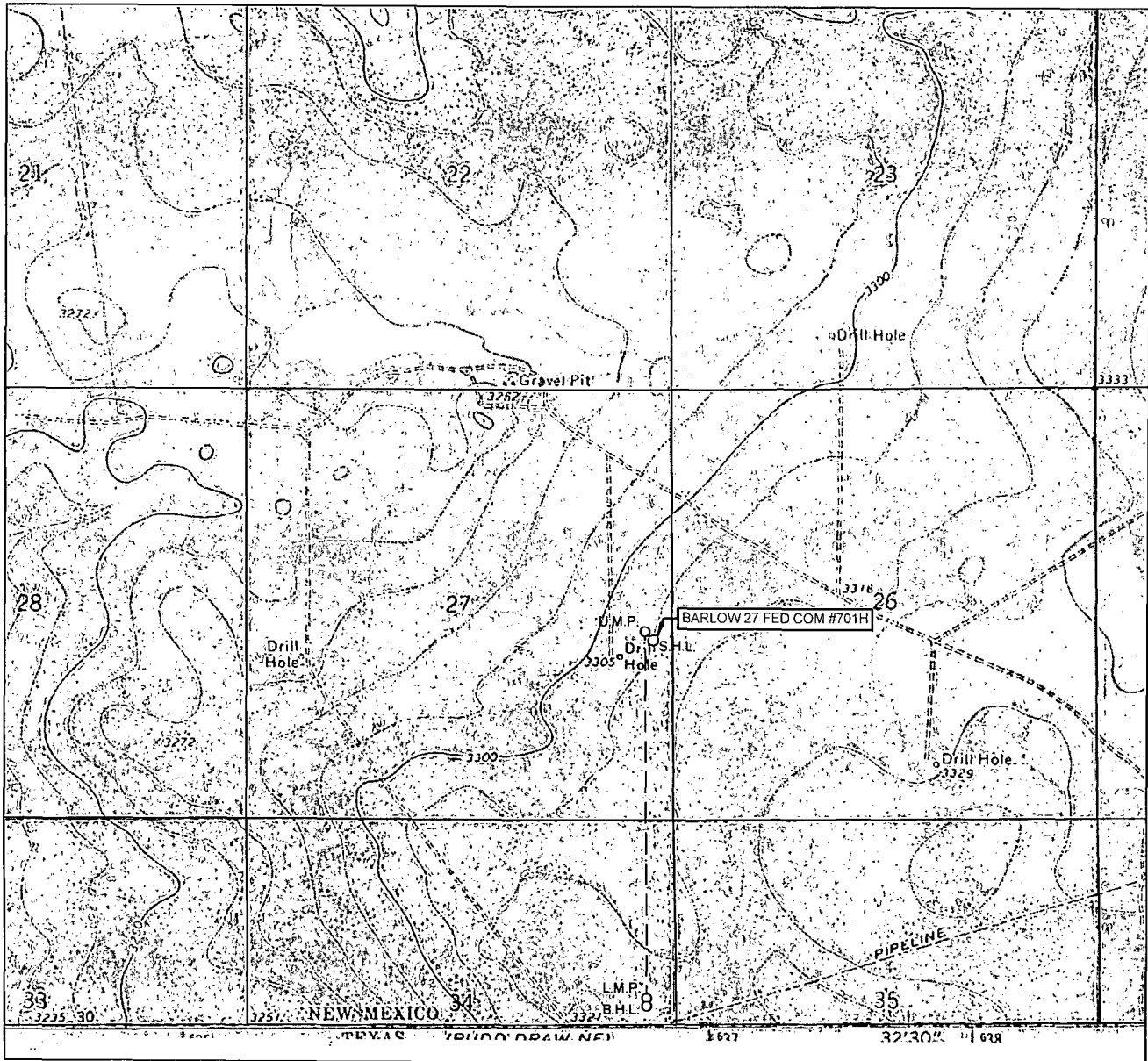
ALL BEARINGS, DISTANCES, AND COORDINATE VALUES CONTAINED HEREON ARE GRID  
BASED UPON THE NEW MEXICO STATE PLANE COORDINATE SYSTEM, EAST ZONE OF THE  
NORTH AMERICAN DATUM 1927, U.S. SURVEY FEET

THIS EASEMENT/SERVITUDE LOCATION SHOWN HEREON HAS BEEN SURVEYED ON THE GROUND  
UNDER MY SUPERVISION AND PREPARED ACCORDING TO THE EVIDENCE FOUND AT THE TIME OF  
SURVEY, AND DATA PROVIDED BY EOG RESOURCES, INC. THIS CERTIFICATION IS MADE AND LIMITED  
TO THOSE PERSONS OR ENTITIES SHOWN ON THE FACE OF THIS PLAT AND IS NON-TRANSFERABLE.  
THIS SURVEY IS CERTIFIED FOR THIS TRANSACTION ONLY.



1400 EVERMAN PARKWAY, Ste. 197 • FT. WORTH, TEXAS 76140  
TELEPHONE: (817) 744-7512 • FAX: (817) 744-7548  
2903 NORTH BIG SPRING • MIDLAND, TEXAS 79705  
TELEPHONE: (432) 682-1653 OR (800) 767-1653 • FAX: (432) 682-1743  
WWW.TOPOGRAPHIC.COM

# LOCATION & ELEVATION VERIFICATION MAP



LEASE NAME & WELL NO.: BARLOW 27 FED COM #701H

SECTION 27 TWP 26-S RGE 33-E SURVEY N.M.P.M.  
 COUNTY LEA STATE NM ELEVATION 3313'  
 DESCRIPTION 2200' FSL & 220' FEL

LATITUDE LAT.: N 32.0131054 LONGITUDE LONG.: W 103.5518818



SCALE: 1" = 2000'  
 0' 1000' 2000'

THIS EASEMENT/SERVITUDE LOCATION SHOWN HEREON HAS BEEN SURVEYED ON THE GROUND UNDER MY SUPERVISION AND PREPARED ACCORDING TO THE EVIDENCE FOUND AT THE TIME OF SURVEY, AND DATA PROVIDED BY EOG RESOURCES, INC. THIS CERTIFICATION IS MADE AND LIMITED TO THOSE PERSONS OR ENTITIES SHOWN ON THE FACE OF THIS PLAT AND IS NON-TRANSFERABLE. THIS SURVEY IS CERTIFIED FOR THIS TRANSACTION ONLY.

ALL BEARINGS, DISTANCES, AND COORDINATE VALUES CONTAINED HEREON ARE GRID BASED UPON THE NEW MEXICO STATE PLANE COORDINATE SYSTEM, EAST ZONE OF THE NORTH AMERICAN DATUM 1927, U.S. SURVEY FEET.

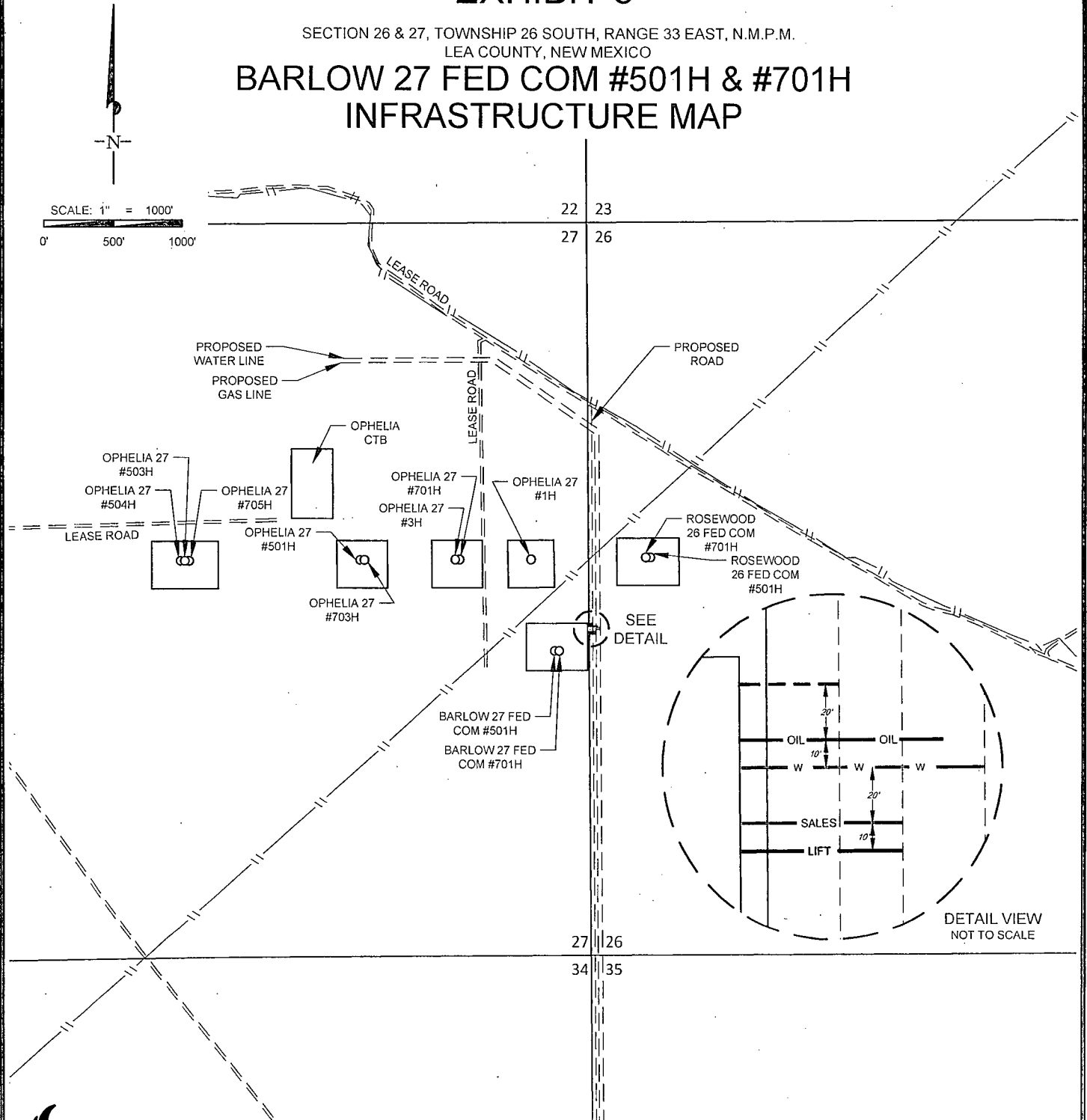


1400 EVERMAN PARKWAY, Ste. 197 • FT. WORTH, TEXAS 76140  
 TELEPHONE: (817) 744-7512 • FAX (817) 744-7548  
 2903 NORTH BIG SPRING • MIDLAND, TEXAS 79705  
 TELEPHONE: (432) 682-1653 OR (800) 767-1653 • FAX (432) 682-1743  
 WWW.TOPOGRAPHIC.COM

# EXHIBIT 5

SECTION 26 & 27, TOWNSHIP 26 SOUTH, RANGE 33 EAST, N.M.P.M.  
LEA COUNTY, NEW MEXICO

## BARLOW 27 FED COM #501H & #701H INFRASTRUCTURE MAP



BARLOW 27 FED COM #501H & #701H INFRASTRUCTURE MAP	REVISION:	
	INT	DATE
DATE: 06/15/15		
FILE: S:\BARLOW27FEDCOM_501H & 701H INFRASTRUCTURE		
DRAWN BY: MML		
SHEET: 1 OF 1		

W	PRODUCED WATER 10" POLY LINE -TOTAL FOOTAGE 90 FT -(WORKING PRESSURE 75-125 PSI)	SALES	GAS SALES 12" STEEL LINE -TOTAL FOOTAGE 60 FT -(WORKING PRESSURE 75-125 PSI)
LIFT	GAS LIFT 8" STEEL LINE -TOTAL FOOTAGE 60 FT -(WORKING PRESSURE 75-125 PSI)	OIL	OIL SALES 8" STEEL LINE -TOTAL FOOTAGE 75 FT -(WORKING PRESSURE 75-125 PSI)
	BARLOW 27 FED COM #501H & #701H ..... 90 FT		BARLOW 27 FED COM #501H & #701H ..... 60 FT
	BARLOW 27 FED COM #501H & #701H ..... 60 FT		BARLOW 27 FED COM #501H & #701H ..... 75 FT
	PROPOSED LEASE RD. -TOTAL FOOTAGE 37 FT		
	BARLOW 27 FED COM #501H & #701H ..... 37 FT		