

15-843

6.7

# NM OIL CONSERVATION

OCD Artesia

ARTESIA DISTRICT

Form 3160-3  
(March 2012)

DEC 21 2015

FORM APPROVED  
OMB No. 1004-0137  
Expires October 31, 2014

UNITED STATES  
DEPARTMENT OF THE INTERIOR  
BUREAU OF LAND MANAGEMENT

RECEIVED

## APPLICATION FOR PERMIT TO DRILL OR REENTER

HOPES CO  
JAN 13 2016  
RECEIVED

5. Lease Serial No.  
NM - 122622 (BHL)

6. If Indian, Allottee or Tribe Name

7. If Unit or CA Agreement, Name and No.

8. Lease Name and Well No.  
Endurance 36 State Com 702H (38129)

9. API Well No.  
30-025- 43019

10. Field and Pool, or Exploratory  
WC-025 G-09 S263327G; Upper WC (98097)

11. Sec., T. R. M. or Blk. and Survey or Area  
Sec 36, T26S, R33E

12. County or Parish  
Lea

13. State  
NM

1a. Type of work: ☒ DRILL ☐ REENTER

1b. Type of Well: ☒ Oil Well ☐ Gas Well ☐ Other ☐ Single Zone ☐ Multiple Zone

2. Name of Operator EOG Resources, Inc. 7777

3a. Address P. O. Box 2267  
Midland, Texas 79702

3b. Phone No. (include area code)  
432-686-3684

4. Location of Well (Report location clearly and in accordance with any State requirements)

At surface 850 FSL & 360 FEL, SENE (H), Sec 36, T26S, R33E

At proposed prod. zone 230 FNL & 630 FEL, NENE (A), Sec 25, T26S, R33E

UNORTHODOX  
LOCATION

14. Distance in miles and direction from nearest town or post office\*  
Approximately 27 +/- miles SW from Jal, NM

15. Distance from proposed\* location to nearest property or lease line, ft.  
(Also to nearest drig. unit line, if any)  
230'

16. No. of acres in lease  
1640 Fed, 303.52 St,

17. Spacing Unit dedicated to this well  
236.50

18. Distance from proposed location\* to nearest well, drilling, completed, applied for, on this lease, ft.  
30' from 703H

19. Proposed Depth  
20,016 MD, 12,710 TVD

20. BLM/BIA Bond No. on file  
NM 2308

21. Elevations (Show whether DF, KDB, RT, GL, etc.)  
3351' GL

22. Approximate date work will start\*  
01/01/2016

23. Estimated duration  
25 days

### 24. Attachments

The following, completed in accordance with the requirements of Onshore Oil and Gas Order No.1, must be attached to this form:

1. Well plat certified by a registered surveyor.
2. A Drilling Plan.
3. A Surface Use Plan (if the location is on National Forest System Lands, the SUPO must be filed with the appropriate Forest Service Office).
4. Bond to cover the operations unless covered by an existing bond on file (see Item 20 above).
5. Operator certification
6. Such other site specific information and/or plans as may be required by the BLM.

Signature  
Renee Jarratt  
Title  
Regulatory Analyst

Name (Printed/Typed)  
Renee Jarratt

Date  
06/24/2015

Approved by (Signature) /S/ STEPHEN J. CAFFEY

Name (Printed/Typed)

Date  
DEC 16 2015

Title  
FOR FIELD MANAGER

Office  
BLM-CARLSBAD FIELD OFFICE

Application approval does not warrant or certify that the applicant holds legal or equitable title to those rights in the subject lease which would entitle the applicant to conduct operations thereon.  
Conditions of approval, if any, are attached.

APPROVAL FOR TWO YEARS

Title 18 U.S.C. Section 1001 and Title 43 U.S.C. Section 1212, make it a crime for any person knowingly and willfully to make to any department or agency of the United States any false, fictitious or fraudulent statements or representations as to any matter within its jurisdiction.

(Continued on page 2)

SEE ATTACHED FOR  
CONDITIONS OF APPROVAL

KZ  
01/14/16

\*(Instructions on page 2)  
APPROVAL SUBJECT TO  
GENERAL REQUIREMENTS AND  
SPECIAL STIPULATIONS  
ATTACHED

Carlsbad Controlled Water Basin

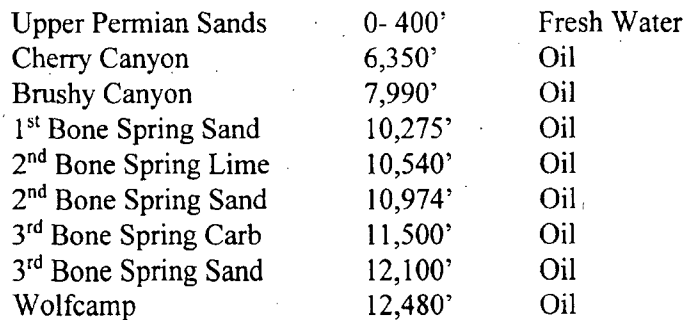
Witness Surface Casing

JAN 14 2016

**EOG RESOURCES, INC.**  
**ENDURANCE 36 STATE COM NO. 702H**

## Permian

Rustler	840'
Top of Salt	1,210'
Base of Salt / Top Anhydrite	5,056'
Base Anhydrite	5,300'
Lamar	5,300'
Bell Canyon	5,324'
Cherry Canyon	6,350'
Brushy Canyon	7,990'
Bone Spring Lime	9,480'
1 <sup>st</sup> Bone Spring Sand	10,275'
2 <sup>nd</sup> Bone Spring Lime	10,540'
2 <sup>nd</sup> Bone Spring Sand	10,974'
3 <sup>rd</sup> Bone Spring Carb	11,500'
3 <sup>rd</sup> Bone Spring Sand	12,100'
Wolfcamp	12,480'
TD	12,710'



Replacement APD pages Emailed to BLM 10-30-15

**EOG RESOURCES, INC.**  
**ENDURANCE 36 STATE COM NO. 702H**

**4. CASING PROGRAM - NEW**

See COA

900'

Hole Size	Interval	Csg OD	Weight	Grade	Conn	DF <sub>min</sub> Collapse	DF <sub>min</sub> Burst	DF <sub>min</sub> Tension
17.5"	0 - 865'	13.375"	54.5#	J55	STC	1.125	1.25	1.60
12.25"	0-4,000'	9.625"	40#	J55	LTC	1.125	1.25	1.60
12.25"	4,000' - 5,100'	9.625"	40#	HCK55	LTC	1.125	1.25	1.60
8.75"	0'-20,016'	5.5"	17#	HCP-110	BTC	1.125	1.25	1.60

**Cementing Program:**

See COA

900'

Depth	No. Sacks	Wt. ppg	Yld Ft <sup>3</sup> /ft	Mix Water Gal/sk	Slurry Description
13-3/8" 865'	400	13.5	1.73	9.13	Class C + 4.0% Bentonite + 0.6% CD-32 + 0.5% CaCl <sub>2</sub> + 0.25 lb/sk Cello-Flake (TOC @ Surface)
	300	14.8	1.34	6.34	Class C + 0.6% FL-62 + 0.25 lb/sk Cello-Flake + 0.2% Sodium Metasilicate
9-5/8" 5,100'	1000	12.7	2.22	12.38	Lead: Class 'C' + 1.50% R-3 + 0.25 lb/sk Cello-Flake + 2.0% Sodium Metasilicate + 10% Salt + 0.005 lb/sk Static Free (TOC @ surface)
	200	14.8	1.32	6.33	Tail: Class 'C' + 0.25 lb/sk Cello Flake + 0.005 lb/sk Static Free
5-1/2" 20,016'	775	9.0	2.79	10.12	Lead: LiteCRETE + 0.10% D-065 + 0.20% D-046 + 0.40% D-167 + 0.20% D-198 + 0.04% D-208 + 2.0% D-174 (TOC @ 4,600')
	2100	14.4	1.28	5.69	Tail: Class H + 47.01 pps D-909 + 37.01 pps + 5.0% D-020 + 0.30% D-013 + 0.20% D-046 + 0.10% D-065 + 0.50% D-167 + 2.0% D-174

Low CEMENT

Note: Cement volumes based on bit size plus at least 25% excess in the open hole plus 10% excess in the cased-hole overlap section.

**5. MINIMUM SPECIFICATIONS FOR PRESSURE CONTROL:**

See COA

Variance is requested to use a co-flex line between the BOP and choke manifold (instead of using a 4" OD steel line).

The minimum blowout preventer equipment (BOPE) shown in Exhibit #1 will consist of a single ram, mud cross and double ram-type (10,000 psi WP) preventer and an annular preventer (5000-psi WP). Both units will be hydraulically operated and the ram-type will be equipped with blind rams on bottom and drill pipe rams on top. All BOPE will be tested in accordance with Onshore Oil & Gas order No. 2.

**EOG RESOURCES, INC.**  
**ENDURANCE 36 STATE COM NO. 702H**

Before drilling out of the surface casing, the ram-type BOP and accessory equipment will be tested to 5000/ 250 psig and the annular preventer to 5000/ 250 psig. The surface casing will be tested to 1500 psi for 30 minutes.

Before drilling out of the intermediate casing, the ram-type BOP and accessory equipment will be tested to 5000/ 250 psig and the annular preventer to 5000/ 250 psig. The intermediate casing will be tested to 2000 psi for 30 minutes.

Pipe rams will be operationally checked each 24-hour period. Blind rams will be operationally checked on each trip out of the hole. These checks will be noted on the daily tour sheets.

A hydraulically operated choke will be installed prior to drilling out of the intermediate casing shoe.

**6. TYPES AND CHARACTERISTICS OF THE PROPOSED MUD SYSTEM:**

During this procedure we plan to use a Closed-Loop System and haul contents to the required disposal.

The applicable depths and properties of the drilling fluid systems are as follows.

Depth	Type	Weight (ppg)	Viscosity	Water Loss
0 - 865'	Fresh - Gel	8.6-8.8	28-34	N/c
865' - 5,100'	Oil Base	8.7-9.4	58-68	N/c - 6
5,100' - 12,122'	Oil Base	8.7-9.4	58-68	N/c - 6
12,122' - 20,016' Lateral	Oil Base	10.0-10.5	58-68	N/c - 6

An electronic pit volume totalizer (PVT) will be utilized on the circulating system, to monitor pit volume, flow rate, pump pressure and stroke rate.

Sufficient mud materials to maintain mud properties and meet minimum lost circulation and weight increase requirements will be kept at the wellsite at all times.

**EOG RESOURCES, INC.**  
**ENDURANCE 36 STATE COM NO. 702H**

**7. AUXILIARY WELL CONTROL AND MONITORING EQUIPMENT:**

- (A) A kelly cock will be kept in the drill string at all times.
- (B) A full opening drill pipe-stabbing valve (inside BOP) with proper drill pipe connections will be on the rig floor at all times.
- (C) H<sub>2</sub>S monitoring and detection equipment will be utilized from surface casing point to TD.

**8. LOGGING, TESTING AND CORING PROGRAM:**

*See COR*

Open-hole logs are not planned for this well.

GR-CCL Will be run in cased hole during completions phase of operations.

*See COR*

**9. ABNORMAL CONDITIONS, PRESSURES, TEMPERATURES AND POTENTIAL HAZARDS:**

The estimated bottom-hole temperature (BHT) at TD is 183 degrees F with an estimated maximum bottom-hole pressure (BHP) at TD of 5503 psig. No hydrogen sulfide or other hazardous gases or fluids have been encountered, reported or are known to exist at this depth in this area. No major loss circulation zones have been reported in offsetting wells.

**10. ANTICIPATED STARTING DATE AND DURATION OF OPERATIONS:**

*See COR*

The drilling operation should be finished in approximately one month. If the well is productive, an additional 60-90 days will be required for completion and testing before a decision is made to install permanent facilities.

- (A) EOG Resources requests the option to contract a Surface Rig to drill, set surface casing, and cement on the subject well. If the timing between rigs is such that EOG Resources would not be able to preset the surface, the Primary Rig will MIRU and drill the well in its entirety per the APD.

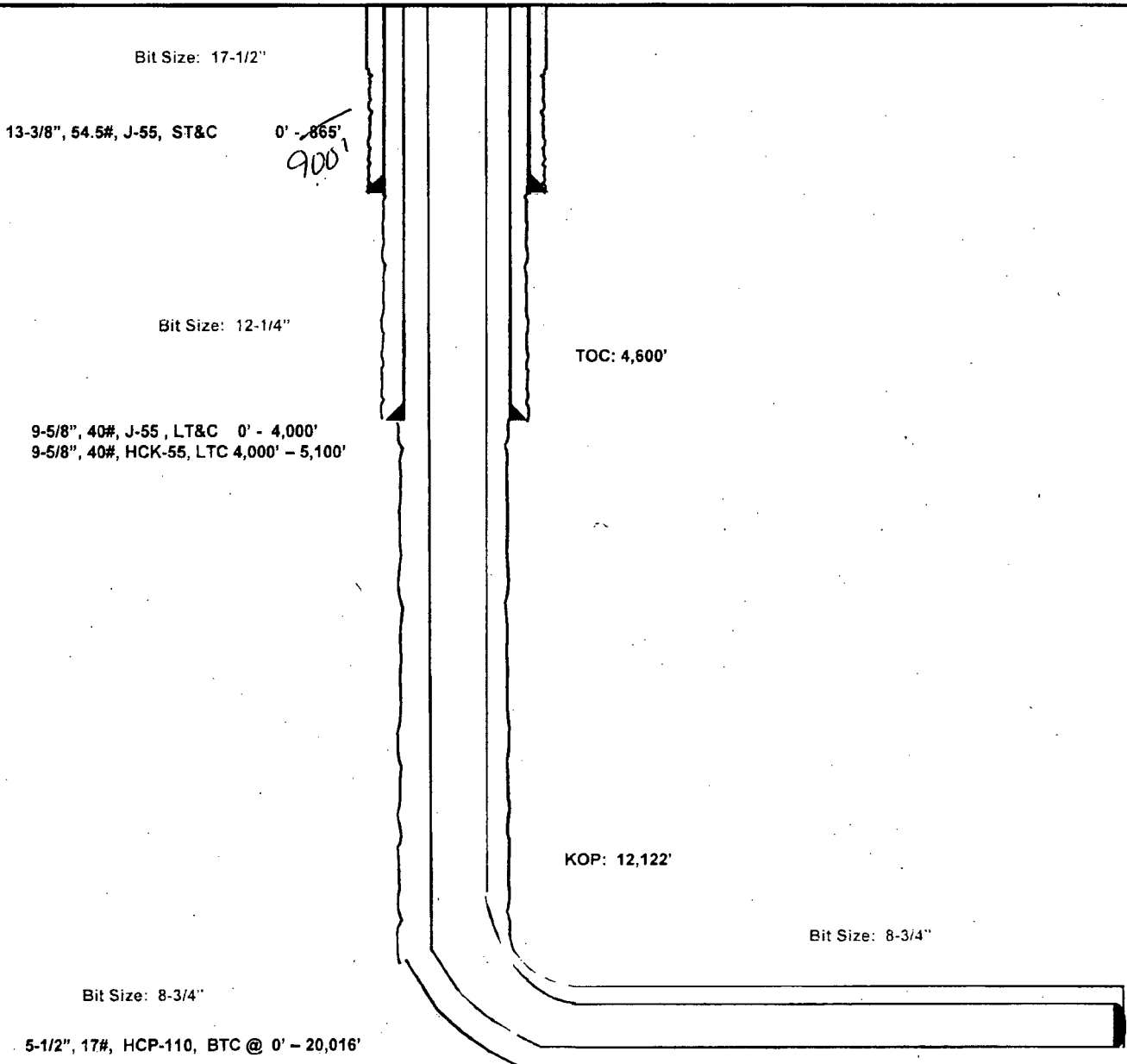
Endurance 36 State Com #702H

Lea County, New Mexico  
Proposed Wellbore

850' FSL  
360' FEL  
Section 36  
T-26-S, R-33-E

API: 30-025-

KB: 3,381'  
GL: 3,351'



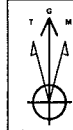
Lateral: 20,016' MD, 12,710' TVD  
Upper Most Perf:  
330' FSL & 630' FEL Sec. 36  
Lower Most Perf:  
330' FNL & 630' FWL Sec. 25  
BH Location: 230' FNL & 630' FEL  
Section 25  
T-26-S, R-33-E



Lea County, NM (NAD 27 NME)  
Endurance 36 State Com #702H  
Plan #1

PROJECT DETAILS: Lea County, NM (NAD 27 NME)

Geodetic System: US State Plane 1927 (Exact solution)  
Datum: NAD 1927 (NADCON CONUS)  
Ellipsoid: Clarke 1866  
Zone: New Mexico East 3001  
System Datum: Mean Sea Level



Azimuths to Grid North  
True North: -0.43°  
Magnetic North: 8.70°

Magnetic Field  
Strength: 48016.0snT  
Dip Angle: 59.89°  
Date: 6/23/2015  
Model: IGRF2015

To convert a Magnetic Direction to a Grid Direction, Add 8.70°  
To convert a Magnetic Direction to a True Direction, Add 7.13° East  
To convert a True Direction to a Grid Direction, Subtract 0.43°

WELL DETAILS: #702H

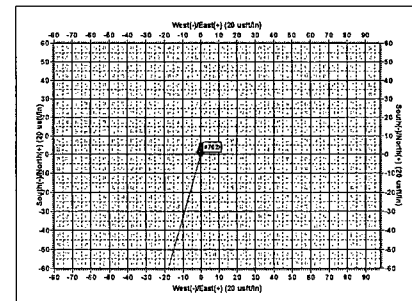
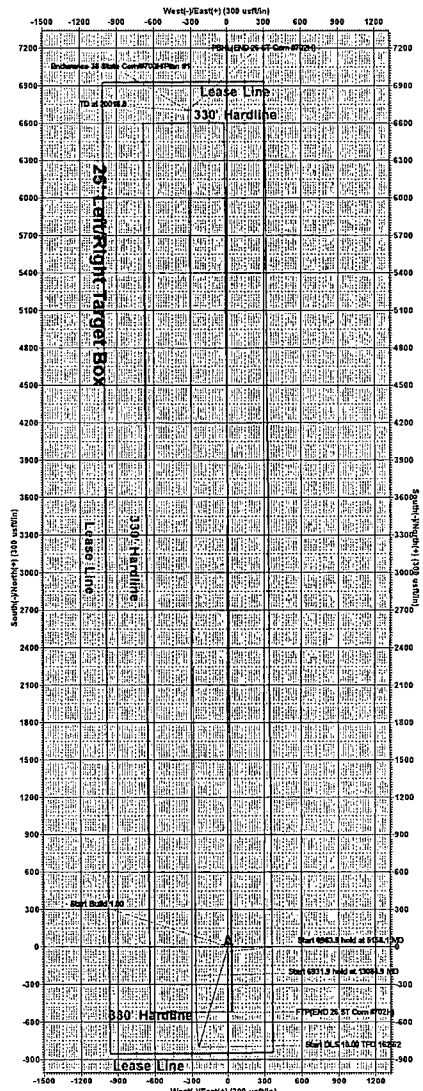
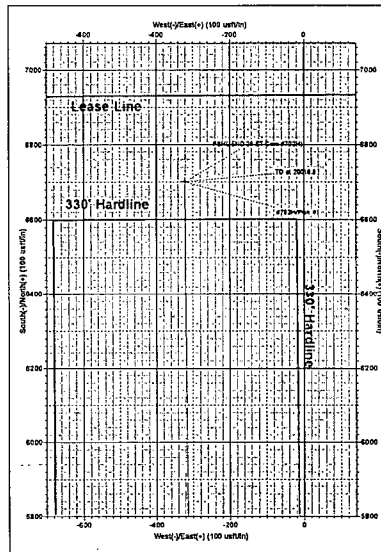
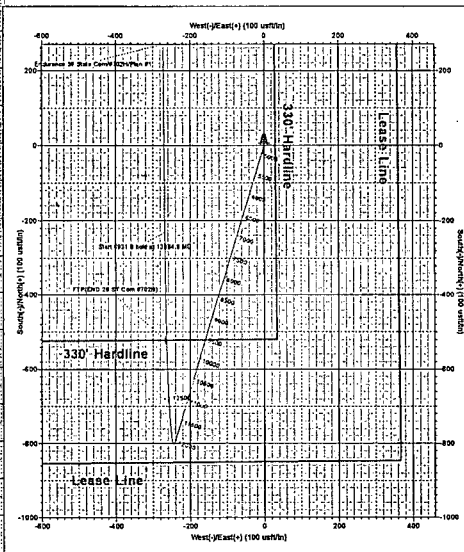
Ground Level: 3351.0  
KB = 25 @ 3378.0 East  
Northing: 365579.00  
Easting: 752672.00  
Latitude: 32° 0' 8.898 N  
Longitude: 103° 31' 5.699 W  
Slot

SECTION DETAILS

Sec	MD	Inc	Azi	TVD	+N-S	+E-W	Dleg	TFace	Vsect	Target
1	0.0	0.00	0.00	0.0	0.0	0.0	0.00	0.00	0.0	
2	4500.0	0.00	0.00	4500.0	0.0	0.0	0.00	0.00	0.0	
3	5158.1	6.58	196.84	5156.6	-36.1	-10.9	1.00	196.84	-35.6	
4	12122.0	6.58	196.84	12074.7	-800.0	-242.1	0.00	0.00	-787.5	
5	13084.9	90.00	359.56	12710.0	-230.7	-268.2	10.00	162.62	-217.6	
6	20016.8	90.00	359.56	12710.0	6701.0	-321.0	0.00	0.00	6708.7	PBHL(End 26 ST Com #702H)

WELLBORE TARGET DETAILS (MAP CO-ORDINATES)

Name	TVD	+N-S	+E-W	Northing	Easting	Shape
FRIEND 26 ST Com #702H	12710.0	-522.0	-266.0	365579.00	752406.80	Point
PBHL(End 26 ST Com #702H)	12710.0	6701.0	-321.0	372280.00	752351.00	Point



Lea County, NM (NAD 27 NME)  
Endurance 36 State Com #702H  
Plan #1

**NM OIL CONSERVATION**  
ARTESIA DISTRICT

FORM C-102

Revised August 1, 2011

Submit one copy to appropriate

District Office

State of New Mexico  
Energy, Minerals & Natural Resources  
Department  
OIL CONSERVATION DIVISION  
1220 South St. Francis Dr.  
Sante Fe, NM 87505

DEC 21 2015

RECEIVED

☐ AMENDED REPORT

District I  
1625 N. French Dr., Hobbs, NM 88240  
Phone: (575) 393-6161 Fax: (575) 393-0720  
District II  
811 S. First St., Artesia, NM 88210  
Phone: (575) 748-1283 Fax: (575) 748-9720  
District III  
1000 Rio Brazos Road, Aztec, NM 87410  
Phone: (505) 334-6178 Fax: (505) 334-6170  
District IV  
1220 S. St. Francis Dr., Sante Fe, NM 87505  
Phone: (505) 476-3460 Fax: (505) 476-3462

**WELL LOCATION AND ACREAGE DEDICATION**

<sup>1</sup> API Number 30-025-43019	<sup>2</sup> Pool Code 98097	<sup>3</sup> Pool Name WC-025 G-09 S2633-27G2 Upper Wolfcamp
<sup>4</sup> Property Code 38129	<sup>5</sup> Property Name ENDURANCE 36 STATE COM	<sup>6</sup> Well Number #702H
<sup>7</sup> GRID No. 7377	<sup>8</sup> Operator Name EOG RESOURCES, INC.	<sup>9</sup> Elevation 3351'

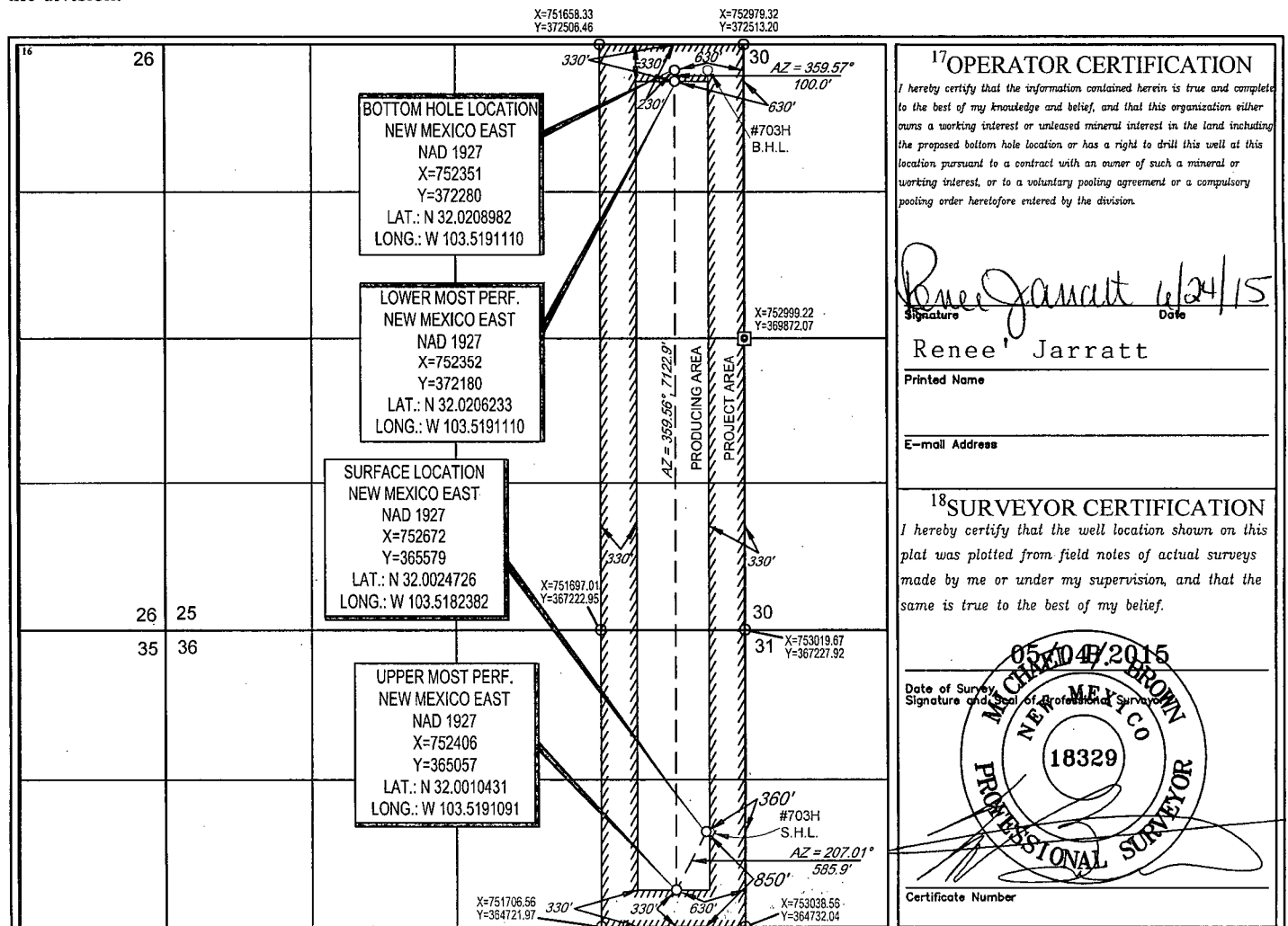
<sup>10</sup>Surface Location

UL or lot no.	Section	Township	Range	Lot Idn	Feet from the	North/South line	Feet from the	East/West line	County
H	36	26-S	33-E	+	850'	SOUTH	360'	EAST	LEA

UL or lot no.	Section	Township	Range	Lot Idn	Feet from the	North/South line	Feet from the	East/West line	County
A	25	26-S	33-E	-	230'	NORTH	630'	EAST	LEA

<sup>12</sup> Dedicated Acres 236.50	<sup>13</sup> Joint or Infill	<sup>14</sup> Consolidation Code	<sup>15</sup> Order No.
---	-------------------------------	----------------------------------	-------------------------

No allowable will be assigned to this completion until all interests have been consolidated or a non-standard unit has been approved by the division.



[illegible]

**Geog resources, inc.**

SECTION 36 TWP 26-S RGE 33-E SURVEY N.M.P.M.  
COUNTY LEA STATE NM  
DESCRIPTION 850' FSL & 360' FEL

FROM INT. OF NM-18 N. & NM-128, GO WEST ON NM-128 +14.1 MILES, THENCE SOUTH (LEFT) ON BATTLE AXE RD. +13.2 MILES, THENCE EAST (LEFT) ON LEASE RD. +1.8 MILES, THENCE SOUTH (RIGHT) ON LEASE RD. +0.6 MILES, THENCE SOUTHWEST (RIGHT) ON LEASE RD. +0.4 MILE, THENCE SOUTH (LEFT) ON LEASE RD. +4.4 MILES, THENCE EAST (LEFT) ON LEASE RD. +0.8 MILES, TO A PROPOSED RD. +636 FEET TO A POINT +264 FEET SOUTHWEST OF THIS LOCATION.

ALL BEARINGS, DISTANCES, AND COORDINATE VALUES CONTAINED HEREON ARE GRID BASED UPON THE NEW MEXICO STATE PLANE COORDINATE SYSTEM, EAST ZONE OF THE NORTH AMERICAN DATUM 1927, U.S. SURVEY FEET.



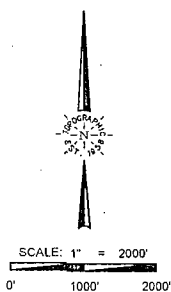
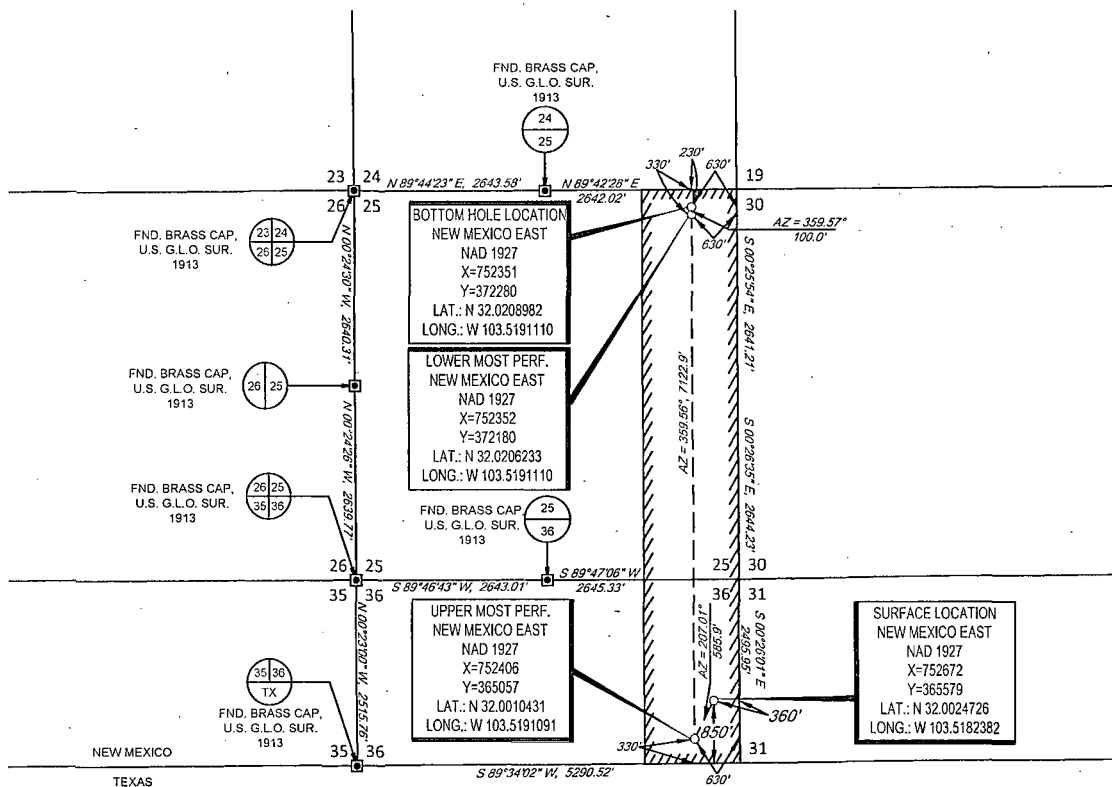
**TOPOGRAPHIC**  
LOYALTY. INNOVATION. LEGACY.

1400 EVERMAN PARKWAY, Ste. 197 • FT. WORTH, TEXAS 76140  
TELEPHONE: (817) 744-7512 • FAX (817) 744-7548  
2903 NORTH BIG SPRING • MIDLAND, TEXAS 79705  
TELEPHONE: (432) 682-1653 OR (800) 767-1653 • FAX (432) 682-1743  
[WWW.TOPGRAPHIC.COM](http://WWW.TOPGRAPHIC.COM)



## EXHIBIT 2A

SECTION 36, TOWNSHIP 26-S, RANGE 33-E, N.M.P.M.  
LEA COUNTY, NEW MEXICO



LEASE NAME & WELL NO.: ENDURANCE 36 STATE COM #702H

SECTION 36 TWP 26-S RGE 33-E SURVEY N.M.P.M.  
COUNTY LEA STATE NM  
DESCRIPTION 850' FSL & 360' FEL

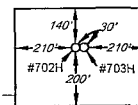
### DISTANCE & DIRECTION

FROM INT. OF NM-18 N. & NM-128. GO WEST ON NM-128 ±14.1 MILES.  
THENCE SOUTH (LEFT) ON BATTLE AXE RD. ±13.2 MILES. THENCE EAST  
(LEFT) ON LEASE RD. ±1.8 MILES. THENCE SOUTH (RIGHT) ON LEASE  
RD. ±0.6 MILES. THENCE SOUTHWEST (RIGHT) ON LEASE RD. ±0.4 MILE.  
THENCE SOUTH (LEFT) ON LEASE RD. ±4.4 MILES. THENCE EAST (LEFT)  
ON LEASE RD. ±0.8 MILES. TO A PROPOSED RD. ±636 FEET TO A POINT  
±264 FEET SOUTHWEST OF THIS LOCATION.

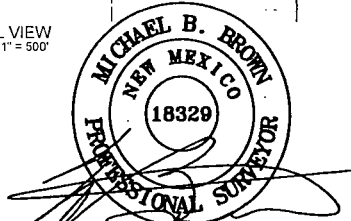
ALL BEARINGS, DISTANCES, AND COORDINATE VALUES CONTAINED HEREON ARE GRID  
BASED UPON THE NEW MEXICO STATE PLANE COORDINATE SYSTEM, EAST ZONE OF THE  
NORTH AMERICAN DATUM 1927, U.S. SURVEY FEET

THIS EASEMENT/SERVITUDE LOCATION SHOWN HEREON HAS BEEN SURVEYED ON THE GROUND  
UNDER MY SUPERVISION AND PREPARED ACCORDING TO THE EVIDENCE FOUND AT THE TIME OF  
SURVEY. AND DATA PROVIDED BY EOG RESOURCES, INC. THIS CERTIFICATION IS MADE AND LIMITED  
TO THOSE PERSONS OR ENTITIES SHOWN ON THE FACE OF THIS PLAT AND IS NON-TRANSFERABLE.  
THIS SURVEY IS CERTIFIED FOR THIS TRANSACTION ONLY.

DETAIL VIEW  
SCALE: 1" = 500'



PROPOSED  
WELL PAD  
PROPOSED  
ROAD - 636'



Michael Blake Brown, P.S. No. 18329  
JUNE 10, 2015



**TOPOGRAPHIC**  
LOYALTY INNOVATION LEGACY

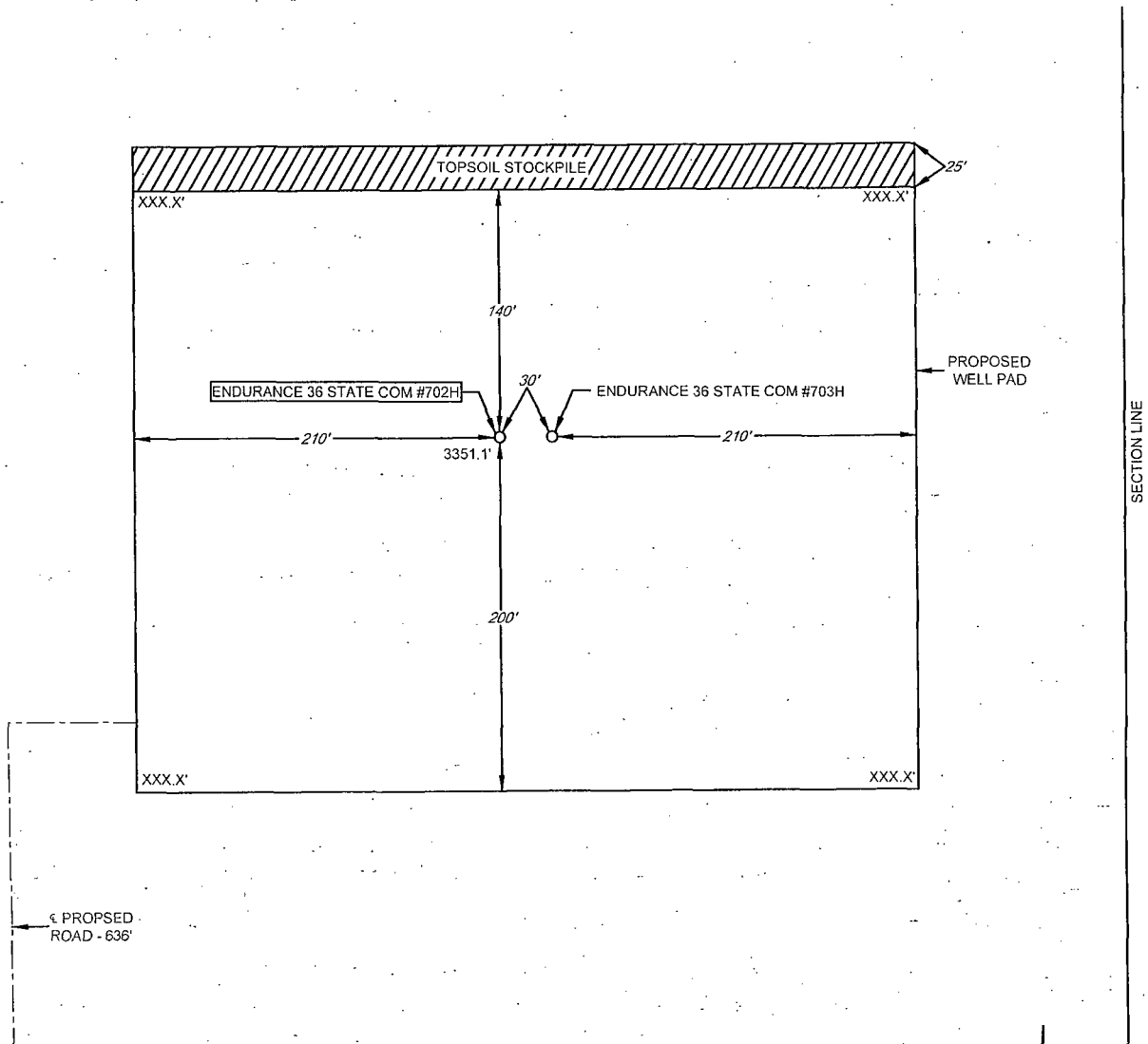
1400 EVERMAN PARKWAY, Ste. 197 • FT. WORTH, TEXAS 76140  
TELEPHONE: (817) 744-7512 • FAX: (817) 744-7548  
2803 NORTH BIG SPRING • MIDLAND, TEXAS 79705  
TELEPHONE: (432) 583-1653 OR (800) 787-1853 • FAX: (432) 582-1743  
WWW.TOPOGRAPHIC.COM



## EXHIBIT 2B

SECTION 36, TOWNSHIP 26-S, RANGE 33-E, N.M.P.M.  
LEA COUNTY, NEW MEXICO

DETAIL VIEW  
SCALE: 1" = 100'



LEASE NAME & WELL NO.: ENDURANCE 36 STATE COM #702H  
#702H LATITUDE N 32.0024726 #702H LONGITUDE W 103.5182382

### LEGEND

----- PROPOSED ROAD  
----- SECTION LINE

SCALE: 1" = 100'  
0' 50' 100'

ALL BEARINGS, DISTANCES, AND COORDINATE VALUES CONTAINED HEREON ARE GRID BASED UPON THE NEW MEXICO STATE PLANE COORDINATE SYSTEM, EAST ZONE OF THE NORTH AMERICAN DATUM 1927, U.S. SURVEY FEET

THIS PROPOSED PAD SITE LOCATION SHOWN HEREON HAS BEEN SURVEYED ON THE GROUND UNDER MY SUPERVISION AND PREPARED ACCORDING TO THE EVIDENCE FOUND AT THE TIME OF SURVEY, AND DATA PROVIDED BY EOG RESOURCES, INC. THIS CERTIFICATION IS MADE AND LIMITED TO THOSE PERSONS OR ENTITIES SHOWN ON THE FACE OF THIS PLAT AND IS NON-TRANSFERABLE. THIS SURVEY IS CERTIFIED FOR THIS TRANSACTION ONLY.



**TOPOGRAPHIC**  
LOYALTY · INNOVATION · LEGACY

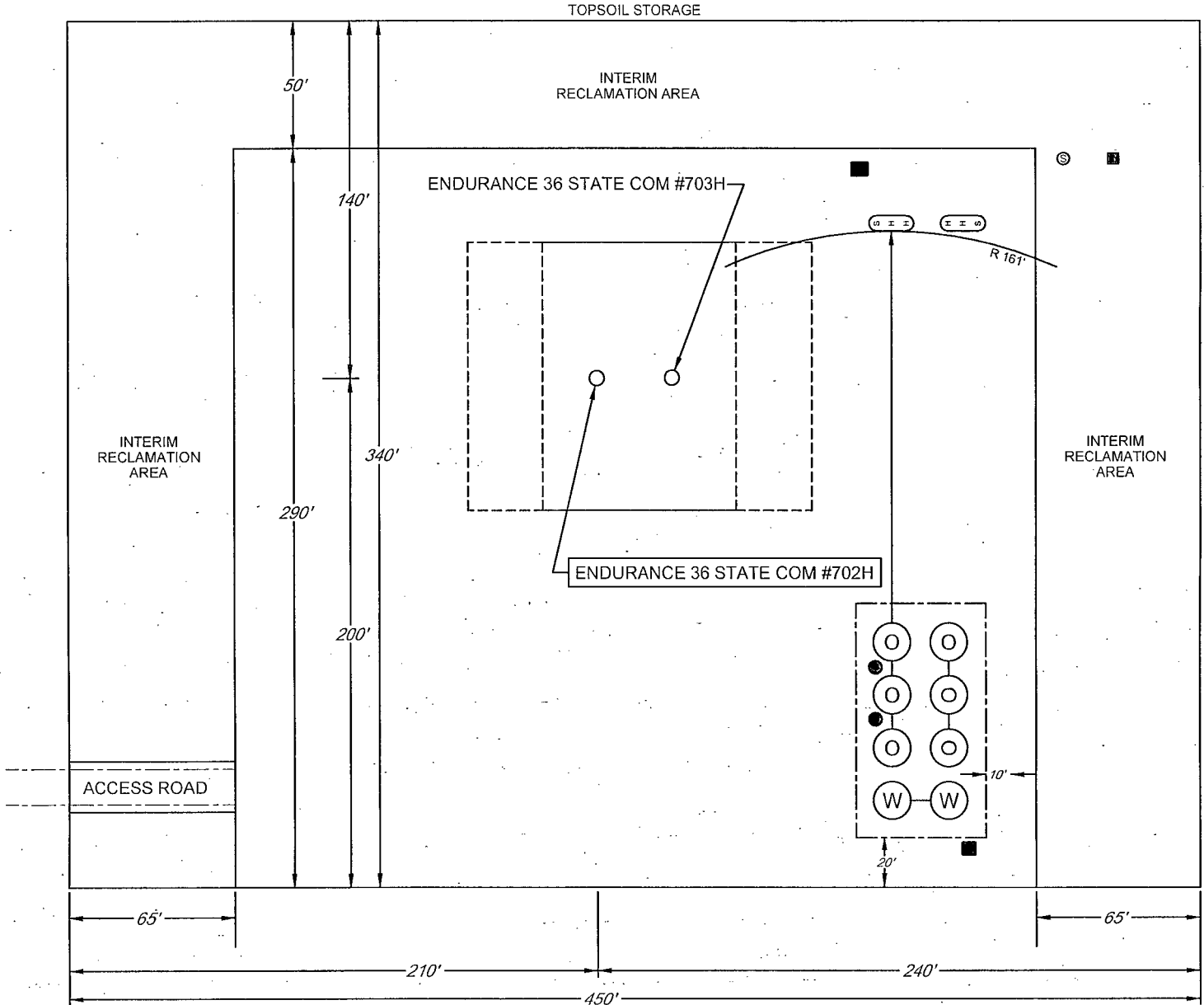
1400 EVERMAN PARKWAY, Ste. 197 • FT. WORTH, TEXAS 76140  
TELEPHONE: (817) 744-7512 • FAX (817) 744-7548  
2903 NORTH BIG SPRING • MIDLAND, TEXAS 79705  
TELEPHONE: (432) 682-1653 OR (800) 767-1653 • FAX (432) 682-1743  
WWW.TOPOGRAPHIC.COM

# EXHIBIT 2C

## RECLAMATION AND FACILITY DIAGRAM - PRODUCTION FACILITIES DIAGRAM

SECTION 36, TOWNSHIP 26-S, RANGE 33-E, N.M.P.M.  
LEA COUNTY, NEW MEXICO

DETAIL VIEW  
SCALE: 1" = 60'



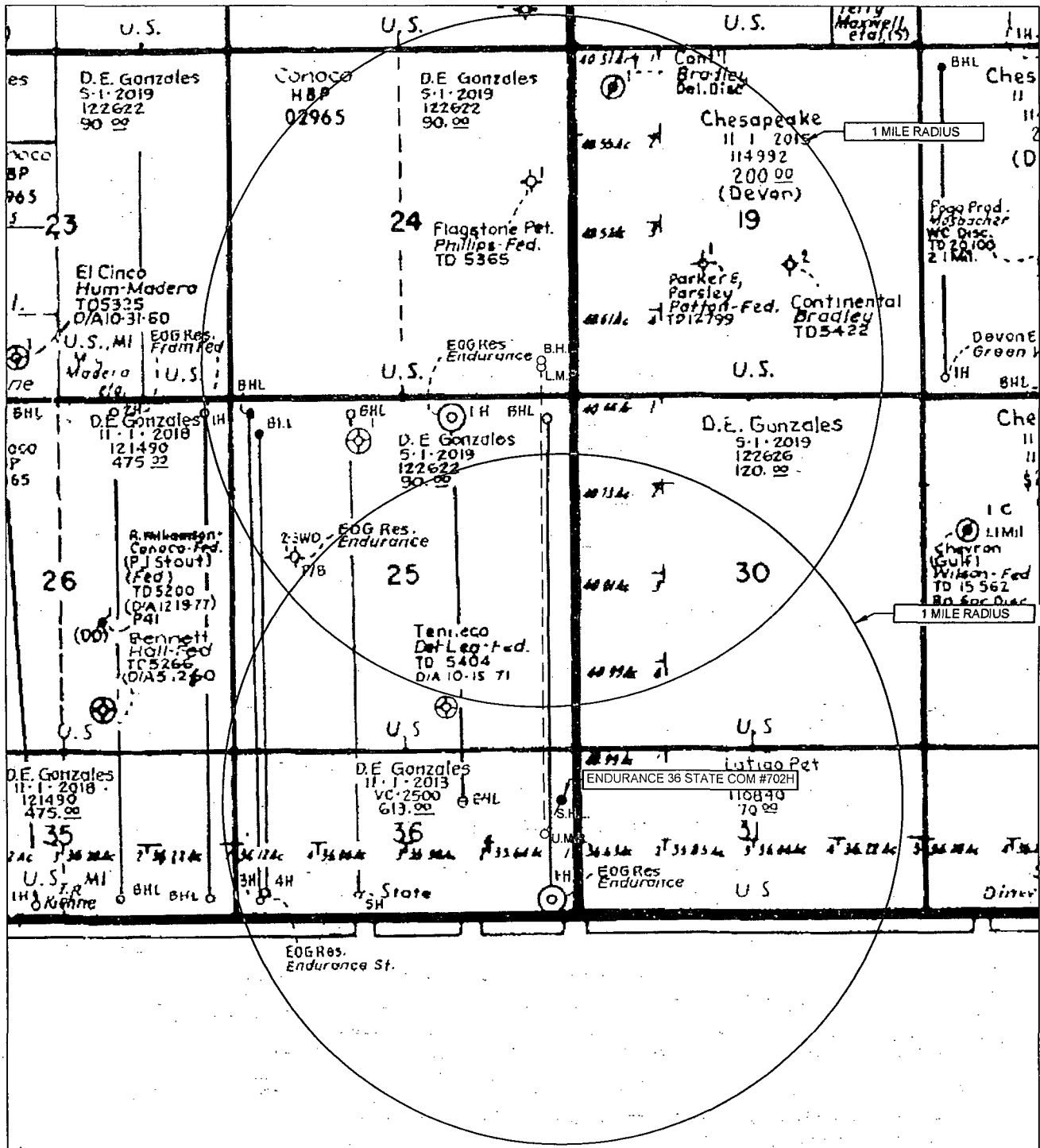
LEASE NAME & WELL NO.: ENDURANCE 36 STATE COM #702H  
#702H LATITUDE N 32.0024726 #702H LONGITUDE W 103.5182382

### LEGEND

- |  |                          |  |                 |
|--|--------------------------|--|-----------------|
|  | 500 BBL OIL TANK         |  | FLARE SEPARATOR |
|  | 500 BBL WATER TANK       |  | VRU             |
|  | 36 x 15 HEATER/SEPARATOR |  | 48 X 25 VRT     |
|  |                          |  | FP FLARE        |
|  |                          |  | OP FLARE        |

# EXHIBIT 3

SECTION 36, TOWNSHIP 26-S, RANGE 33-E, N.M.P.M.  
LEA COUNTY, NEW MEXICO



LEASE NAME & WELL NO.: ENDURANCE 36 STATE COM #702H

SCALE: NTS

#702H LATITUDE N 32.0024726

#702H LONGITUDE W 103.5182382

ALL BEARINGS, DISTANCES, AND COORDINATE VALUES CONTAINED HEREON ARE GRID  
BASED UPON THE NEW MEXICO STATE PLANE COORDINATE SYSTEM, EAST ZONE OF THE  
NORTH AMERICAN DATUM 1927, U.S. SURVEY FEET

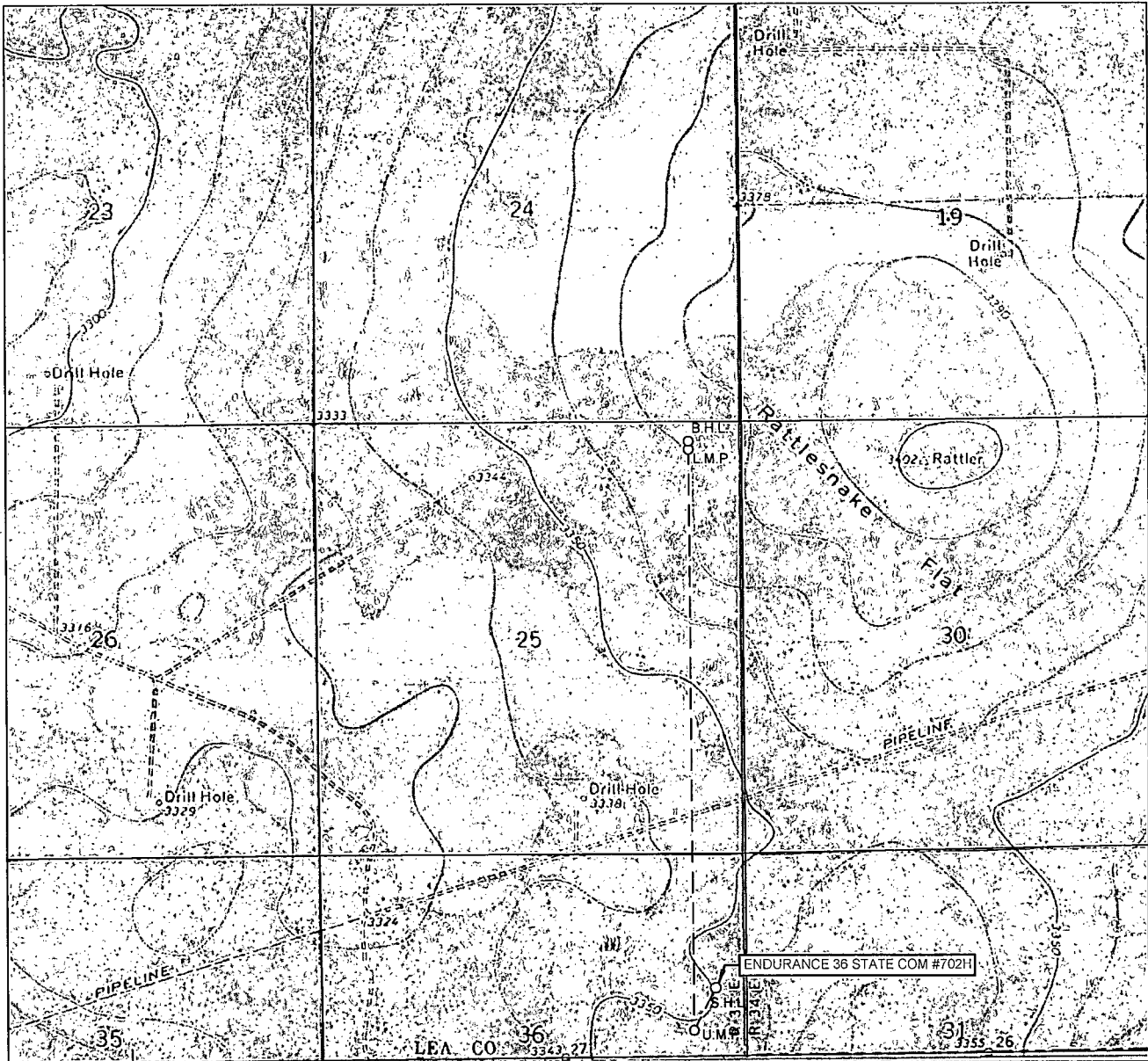
THIS EASEMENT/SERVITUDE LOCATION SHOWN HEREON HAS BEEN SURVEYED ON THE GROUND  
UNDER MY SUPERVISION AND PREPARED ACCORDING TO THE EVIDENCE FOUND AT THE TIME OF  
SURVEY, AND DATA PROVIDED BY EOG RESOURCES, INC. THIS CERTIFICATION IS MADE AND LIMITED  
TO THOSE PERSONS OR ENTITIES SHOWN ON THE FACE OF THIS PLAT AND IS NON-TRANSFERABLE.  
THIS SURVEY IS CERTIFIED FOR THIS TRANSACTION ONLY.



**TOPOGRAPHIC**  
LOYALTY INNOVATION LEGACY

1400 EVERMAN PARKWAY, Ste. 197 • FT. WORTH, TEXAS 76140  
TELEPHONE: (817) 744-7512 • FAX: (817) 744-7548  
2903 NORTH BIG SPRING • MIDLAND, TEXAS 79705  
TELEPHONE: (432) 682-1653 OR (800) 767-1653 • FAX (432) 682-1743  
WWW.TOPOGRAPHIC.COM

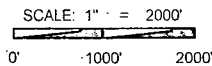
# LOCATION & ELEVATION VERIFICATION MAP



LEASE NAME & WELL NO.: ENDURANCE 36 STATE COM #702H

SECTION 36 TWP 26-S RGE 33-E SURVEY N.M.P.M.  
 COUNTY LEA STATE NM ELEVATION 3351'  
 DESCRIPTION 850' FSL & 360' FEL

LATITUDE N 32.0024726 LONGITUDE W 103.5182382



THIS EASEMENT/SERVITUDE LOCATION SHOWN HEREON HAS BEEN SURVEYED ON THE GROUND UNDER MY SUPERVISION AND PREPARED ACCORDING TO THE EVIDENCE FOUND AT THE TIME OF SURVEY, AND DATA PROVIDED BY EOG RESOURCES, INC. THIS CERTIFICATION IS MADE AND LIMITED TO THOSE PERSONS OR ENTITIES SHOWN ON THE FACE OF THIS PLAT AND IS NON-TRANSFERABLE. THIS SURVEY IS CERTIFIED FOR THIS TRANSACTION ONLY.  
 ALL BEARINGS, DISTANCES, AND COORDINATE VALUES CONTAINED HEREON ARE GRID BASED UPON THE NEW MEXICO STATE PLANE COORDINATE SYSTEM, EAST ZONE OF THE NORTH AMERICAN DATUM 1927, U.S. SURVEY FEET.



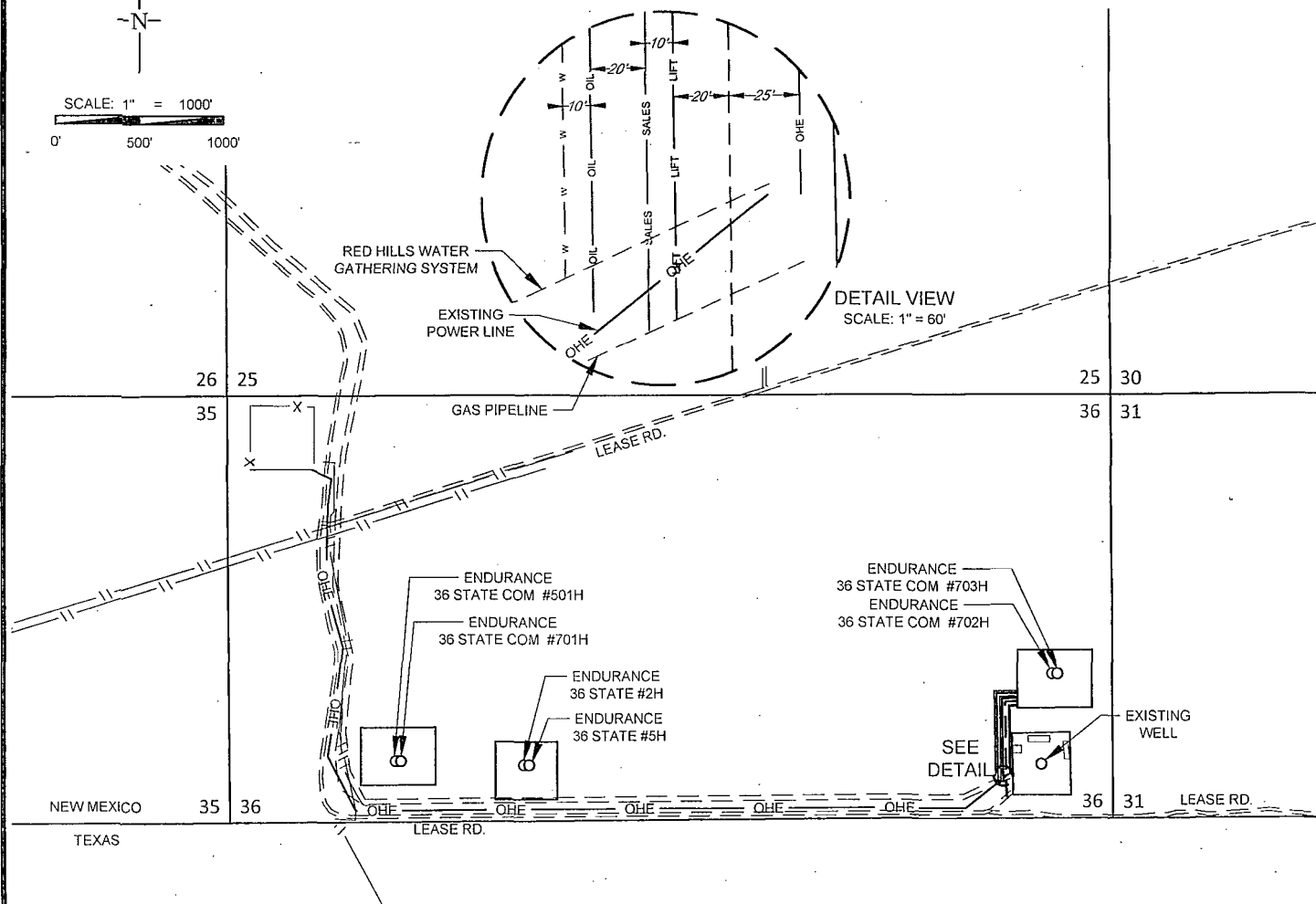
1400 EVERMAN PARKWAY, Ste. 197 • FT. WORTH, TEXAS 76140  
 TELEPHONE: (817) 744-7512 • FAX (817) 744-7548  
 2903 NORTH BIG SPRING • MIDLAND, TEXAS 79705  
 TELEPHONE: (432) 682-1653 OR (800) 767-1653 • FAX (432) 682-1743  
 WWW.TOPOGRAPHIC.COM

# EXHIBIT 5

SECTION 36, TOWNSHIP 26-S, RANGE 33-E, N.M.P.M.

LEA COUNTY, NEW MEXICO

## ENDURANCE 36 STATE COM #702H & #703H INFRASTRUCTURE MAP



W	PRODUCED WATER 10" POLY LINE -TOTAL FOOTAGE 653 FT -(WORKING PRESSURE 75-125 PSI) ENDURANCE 36 STATE COM #702H & #703H ..... 653 FT	SALES	GAS SALES 12" STEEL LINE -TOTAL FOOTAGE 612 FT -(WORKING PRESSURE 75-125 PSI) ENDURANCE 36 STATE COM #702H & #703H ..... 612 FT
LIFT	GAS LIFT 8" STEEL LINE -TOTAL FOOTAGE 588 FT -(WORKING PRESSURE 75-125 PSI) ENDURANCE 36 STATE COM #702H & #703H ..... 588 FT	OIL	OIL SALES 6" STEEL LINE -TOTAL FOOTAGE 645 FT -(WORKING PRESSURE 75-125 PSI) ENDURANCE 36 STATE COM #702H & #703H ..... 645 FT
OHE	ELECTRIC LINE -TOTAL FOOTAGE 454 FT ENDURANCE 36 STATE COM #702H & #703H ..... 454 FT	PROPOSED LEASE RD.	PROPOSED LEASE RD. -TOTAL FOOTAGE 636 FT ENDURANCE 36 STATE COM #702H & #703H ..... 636 FT

ENDURANCE 36 STATE COM #702H & #703H INFRASTRUCTURE MAP	REVISION:	
	INT	DATE
DATE: 06/12/15		
FILE: S:\SURVEY\ENDURANCE_36\FINAL_PRODUCT\SKETCH\ENDURANCE_36_STATE_COM_702H_703H_INFRASTRUCTURE_MAP.DWG		
DRAWN BY: MML		
SHEET: 1 OF 1		

**eoog resources, inc.**