

DISTRICT I
1025 N. French Dr., Hobbs, NM 88240
Phone (505) 283-8161 Fax: (505) 369-0720

DISTRICT II
811 S. First St., Artesia, NM 88210
Phone (505) 748-1893 Fax: (505) 748-0780

DISTRICT III
1000 Rio Brazos Rd., Aztec, NM 87410
Phone (505) 334-8178 Fax: (505) 334-8170

DISTRICT IV
1220 S. St. Francis Dr., Santa Fe, NM 87508
Phone (505) 478-3400 Fax: (505) 478-3402

State of New Mexico
Energy, Minerals and Natural Resources Department

Form C-102
Revised August 1, 2011

Submit one copy to appropriate
District Office

OIL CONSERVATION DIVISION
1220 South St. Francis Dr.
Santa Fe, New Mexico 87505

WELL LOCATION AND ACREAGE DEDICATION PLAT

☐ AMENDED REPORT

API Number 30-025-	Pool Code 98098	Well Name WC-025 2-09-5243532 M, BWA 135
Property Code 315757	Property Name FASCINATOR FEE COM	Well Number 2H
OGRID No. 229137	Operator Name COG OPERATING, LLC	Elevation 3318

Surface Location

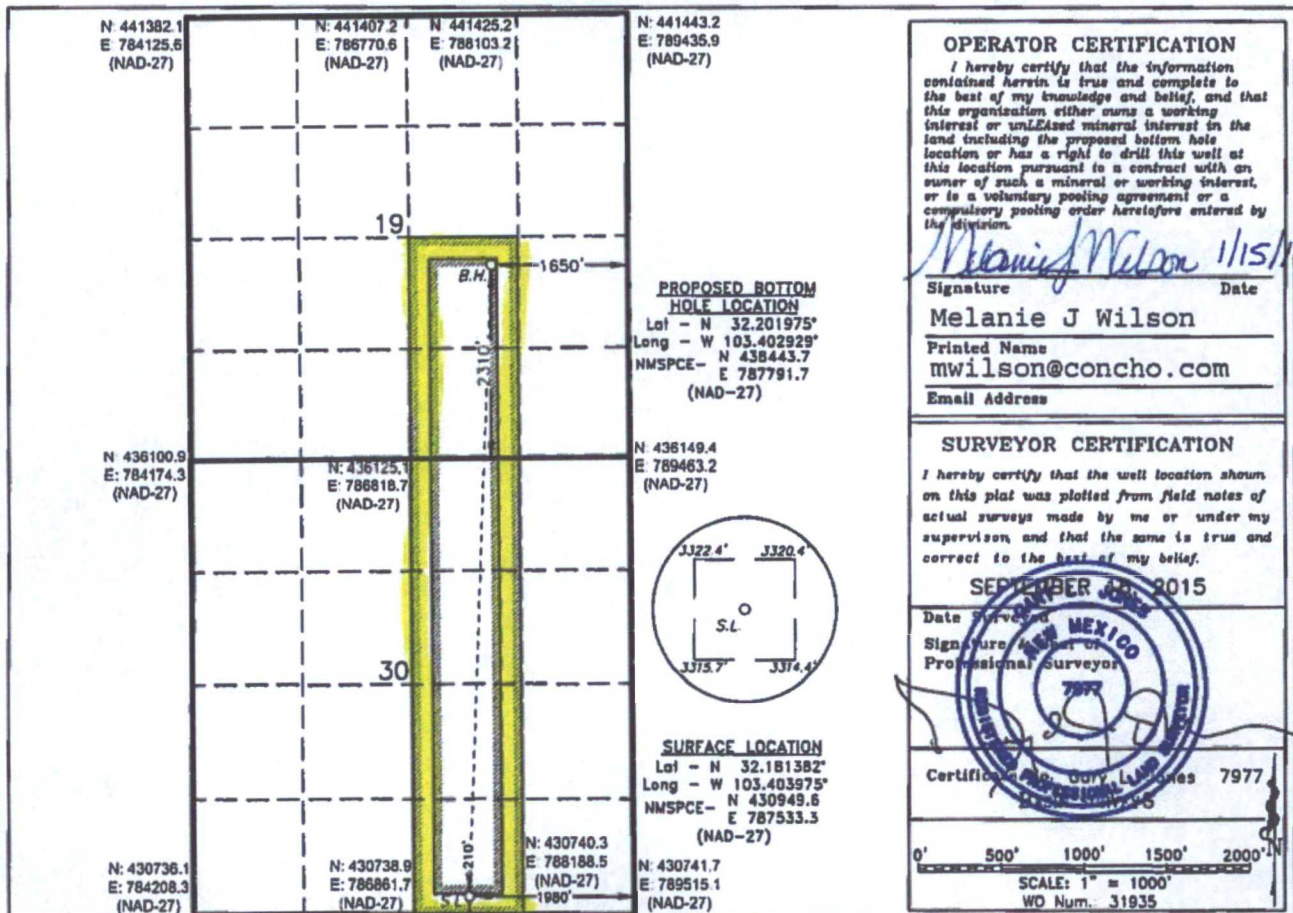
UL or lot No.	Section	Township	Range	Lot Idn	Feet from the	North/South line	Feet from the	East/West line	County
0	30	24 S	35 E		210	SOUTH	1980	EAST	LEA

Bottom Hole Location If Different From Surface

UL or lot No.	Section	Township	Range	Lot Idn	Feet from the	North/South line	Feet from the	East/West line	County
J	19	24 S	35 E		2310	SOUTH	1650	EAST	LEA

Dedicated Acres 240	Joint or Infill	Consolidation Code	Order No.
------------------------	-----------------	--------------------	-----------

NO ALLOWABLE WILL BE ASSIGNED TO THIS COMPLETION UNTIL ALL INTERESTS HAVE BEEN CONSOLIDATED
OR A NON-STANDARD UNIT HAS BEEN APPROVED BY THE DIVISION



JAN 15 2016

Fascinator Fee Com 2H

	Hole Size	Casing	Wt	Depth	Cmt	TOC
Surface	20	16	75	930'	1000	0
Intrmd	13.5	10.75	45.5	5,440'	1700	0
Intrmd	9.875	7.625	19.7	11,873'	1450	0
Prod	6.75	5.5 / 5	20 / 18	19,877'	1350	0

Plan to drill a 20" hole to 930' with fresh water. Run 16", 75# J-55 csg and cmt to surface. Drill a 13.5" hole to 5440' with brine, and run 10.75" 45.5# HCN80 and cement to surface. Drill a 9.875" hole to 11,973' with cut brine, and run 7.625" 29.7# HCP110 and cmt to surface. Drill a 6.75" pilot hole to 12,900' with cut brine, log and plug back with cement. Kick off and drill a 6.75" curve and lateral to 19,877' with OBM. Run 5-1/2" 20# P110 x 5" 18# P110 tapered production string and cement to surface.

Well Control

Type	Pressure	Test	Manufacture
Double Ram	5000	5000	Cameron