

District I
1625 N. French Dr., Hobbs, NM 88240
Phone: (575) 393-6161 Fax: (575) 393-0720
District II
811 S. First St., Artesia, NM 88210
Phone: (575) 748-1283 Fax: (575) 748-9720
District III
1000 Rio Brazos Road, Aztec, NM 87410
Phone: (505) 334-6178 Fax: (505) 334-6170
District IV
1220 S. St. Francis Dr., Santa Fe, NM 87505
Phone: (505) 476-3460 Fax: (505) 476-3462

State of New Mexico
Energy, Minerals & Natural Resources Department
OIL CONSERVATION DIVISION
1220 South St. Francis Dr.
Santa Fe, NM 87505

Form C-102
Revised August 1, 2011
Submit one copy to appropriate
District Office

☐ AMENDED REPORT

WELL LOCATION AND ACREAGE DEDICATION PLAT

¹ API Number 30-025-43024		² Pool Code 14865		³ Pool Name CRUZ; BONE SPRING	
⁴ Property Code 40147		⁵ Property Name JAGUAR 18 STATE			⁶ Well Number 503H
⁷ OGRID No. 270329		⁸ Operator Name ENDURANCE RESOURCES, LLC			⁹ Elevation 3699.3
¹⁰ Surface Location					
UL or lot no. O	Section 18	Township 23 S	Range 33 E	Lot Idn	Feet from the 330
				North/South line SOUTH	Feet from the 2500
				East/West line EAST	County LEA
¹¹ Bottom Hole Location If Different From Surface					
UL or lot no. B	Section 18	Township 23 S	Range 33 E	Lot Idn	Feet from the 330
				North/South line NORTH	Feet from the 2200
				East/West line EAST	County LEA
¹² Dedicated Acres 160		¹³ Joint or Infill		¹⁴ Consolidation Code	
				¹⁵ Order No.	

No allowable will be assigned to this completion until all interests have been consolidated or a non-standard unit has been approved by the division.

<p>N89°45'26"E 2603.78 FT</p> <p>NW CORNER SEC. 18 LAT. = 32.3120410°N LONG. = 103.6197740°W NMSP EAST (FT) N = 477986.64 E = 761782.45</p> <p>NOTE: LATITUDE AND LONGITUDE COORDINATES ARE SHOWN USING THE NORTH AMERICAN DATUM OF 1983 (NAD83). LISTED NEW MEXICO STATE PLANE EAST COORDINATES ARE GRID (NAD83). BASIS OF BEARING AND DISTANCES USED ARE NEW MEXICO STATE PLANE EAST COORDINATES MODIFIED TO THE SURFACE.</p> <p>LOT 1</p> <p>W O CORNER SEC. 18 LAT. = 32.3047962°N LONG. = 103.6197723°W NMSP EAST (FT) N = 475351.04 E = 761800.49</p> <p>LOT 2</p> <p>LOT 3</p> <p>LOT 4</p> <p>SW CORNER SEC. 18 LAT. = 32.2975266°N LONG. = 103.6197716°W NMSP EAST (FT) N = 472706.35 E = 761818.34</p> <p>S O CORNER SEC. 18 LAT. = 32.2975177°N LONG. = 103.6114486°W NMSP EAST (FT) N = 472720.32 E = 764390.09</p> <p>S89°41'16"W 2572.28 FT</p>		<p>N89°45'26"E 2603.78 FT</p> <p>DNF</p> <p>2200'</p> <p>330'</p> <p>BOTTOM OF HOLE</p> <p>NE CORNER SEC. 18 LAT. = 32.3120052°N LONG. = 103.6029220°W NMSP EAST (FT) N = 478008.70 E = 766988.87</p> <p>BOTTOM OF HOLE LAT. = 32.3111143°N LONG. = 103.6100409°W NMSP EAST (FT) N = 477669.66 E = 764791.68</p> <p>E O CORNER SEC. 18 LAT. = 32.3047662°N LONG. = 103.6029120°W NMSP EAST (FT) N = 475375.20 E = 767009.88</p> <p>JAGUAR "18" STATE 503H ELEV. = 3699.3' LAT. = 32.2984244°N (NAD83) LONG. = 103.6109931°W NMSP EAST (FT) N = 473051.12 E = 764528.63</p> <p>SURFACE LOCATION</p> <p>SE CORNER SEC. 18 LAT. = 32.2975067°N LONG. = 103.6029014°W NMSP EAST (FT) N = 472734.22 E = 767031.14</p> <p>S89°42'09"W 2641.61 FT</p>		<p>¹⁶ OPERATOR CERTIFICATION</p> <p>I hereby certify that the information contained herein is true and complete to the best of my knowledge and belief, and that this organization either owns a working interest or unleased mineral interest in the land including the proposed bottom hole location or has a right to drill this well at this location pursuant to a contract with an owner of such a mineral or working interest, or to a voluntary pooling agreement or a compulsory pooling order heretofore entered by the division.</p> <p><i>Tinlee Tilton</i> 1/8/2016 Signature Date</p> <p>TINLEE TILTON Printed Name</p> <p>tinlee@endurance E-mail Address</p> <p>resourcesllc.com</p> <p>¹⁷ SURVEYOR CERTIFICATION</p> <p>I hereby certify that the well location shown on this plat was plotted from field notes of actual surveys made by me or under my supervision, and that the same is true and correct to the best of my belief.</p> <p>JANUARY 8, 2016 Date of Survey</p> <p>WILLIAM F. JARAMILLO 12797 RECORDS</p> <p><i>William F. Jaramillo</i> Signature and Seal of Professional Surveyor</p> <p>Certificate Number WILLIAM F. JARAMILLO, PLS 12797</p> <p>SURVEY NO. 4430</p>
---	--	--	--	--

JAN 15 2016

SITE MAP

NOTE: LATITUDE AND LONGITUDE COORDINATES ARE SHOWN USING THE NORTH AMERICAN DATUM OF 1983 (NAD83). LISTED NEW MEXICO STATE PLANE EAST COORDINATES ARE GRID (NAD83). BASIS OF BEARING AND DISTANCES USED ARE NEW MEXICO STATE PLANE EAST COORDINATES MODIFIED TO THE SURFACE



SCALE 1" = 100'

DIRECTIONS TO LOCATION

FROM STATE HIGHWAY 128 AND CR 21 (DELAWARE BASIN) GO NORTH ON CR 21 6.1 MILES, TURN LEFT ON CALICHE ROAD AND GO WEST 5.79 MILES AND LOCATION IS ON THE RIGHT (NORTH) 130'.

ENDURANCE RESOURCES, LLC
JAGUAR "18" STATE 503H
LOCATED 330 FT. FROM THE SOUTH LINE
AND 2500 FT. FROM THE EAST LINE OF
SECTION 18, TOWNSHIP 23 SOUTH,
RANGE 33 EAST, N.M.P.M.
LEA COUNTY, STATE OF NEW MEXICO

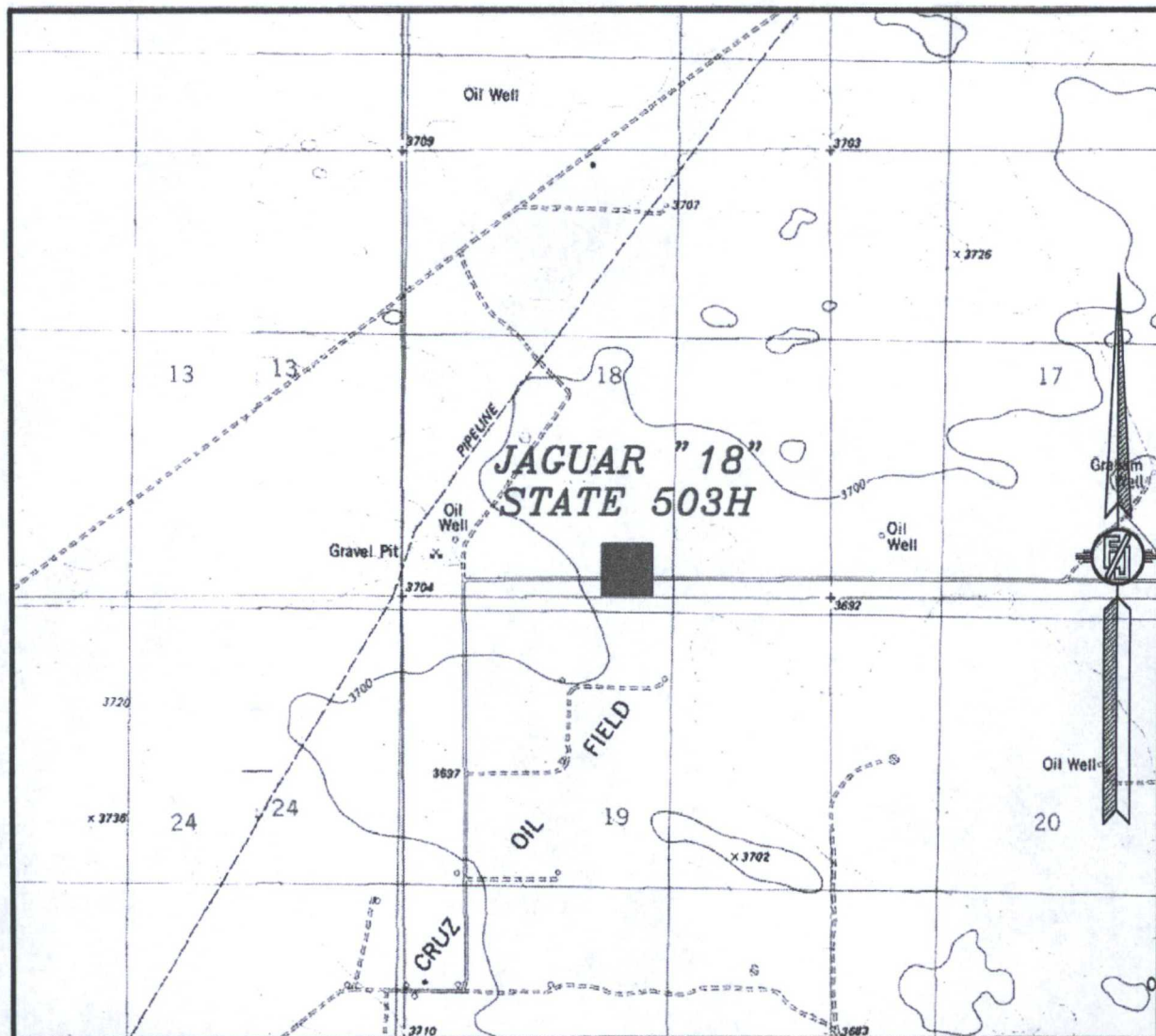
JANUARY 4, 2016

SURVEY NO. 4430

MADRON SURVEYING, INC. 301 SOUTH CANAL (575) 234-3341 **CARLSBAD, NEW MEXICO**

301 SOUTH CANAL
(575) 234-3341

SECTION 18, TOWNSHIP 23 SOUTH, RANGE 33 EAST, N.M.P.M.
LEA COUNTY, STATE OF NEW MEXICO
LOCATION VERIFICATION MAP



USGS QUAD MAP:
TIP TOP WELLS

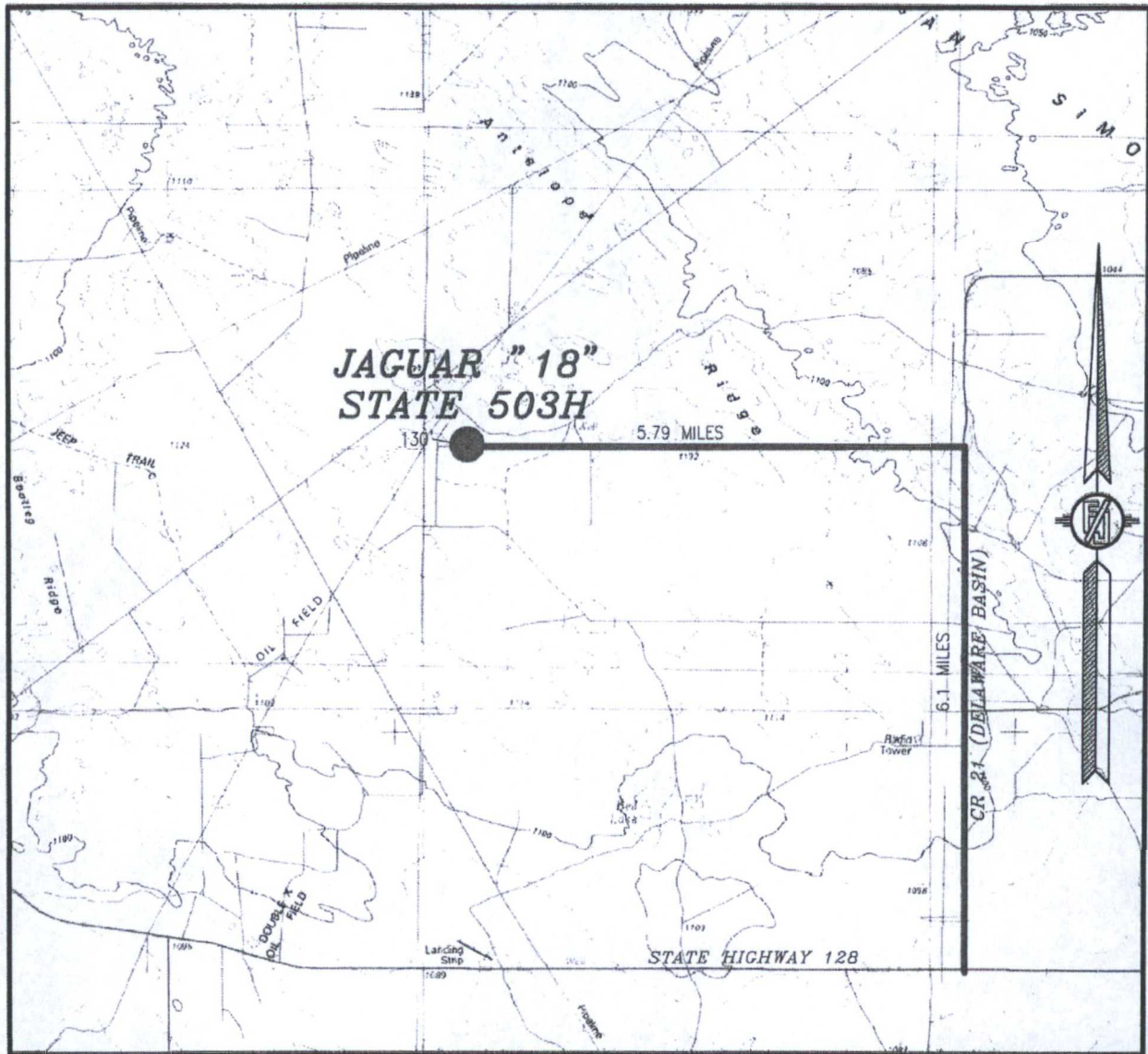
NOT TO SCALE

ENDURANCE RESOURCES, LLC
JAGUAR "18" STATE 503H
LOCATED 330 FT. FROM THE SOUTH LINE
AND 2500 FT. FROM THE EAST LINE OF
SECTION 18, TOWNSHIP 23 SOUTH,
RANGE 33 EAST, N.M.P.M.
LEA COUNTY, STATE OF NEW MEXICO

JANUARY 4, 2016

MADRON SURVEYING, INC. 301 SOUTH CANAL (575) 234-3341 CARLSBAD, NEW MEXICO SURVEY NO. 4430

SECTION 18, TOWNSHIP 23 SOUTH, RANGE 33 EAST, N.M.P.M.
LEA COUNTY, STATE OF NEW MEXICO
VICINITY MAP



DISTANCES IN MILES

NOT TO SCALE

DIRECTIONS TO LOCATION

FROM STATE HIGHWAY 128 AND CR 21 (DELAWARE BASIN) GO NORTH
ON CR 21 6.1 MILES, TURN LEFT ON CALICHE ROAD AND GO WEST
5.79 MILES AND LOCATION IS ON THE RIGHT (NORTH) 130'.

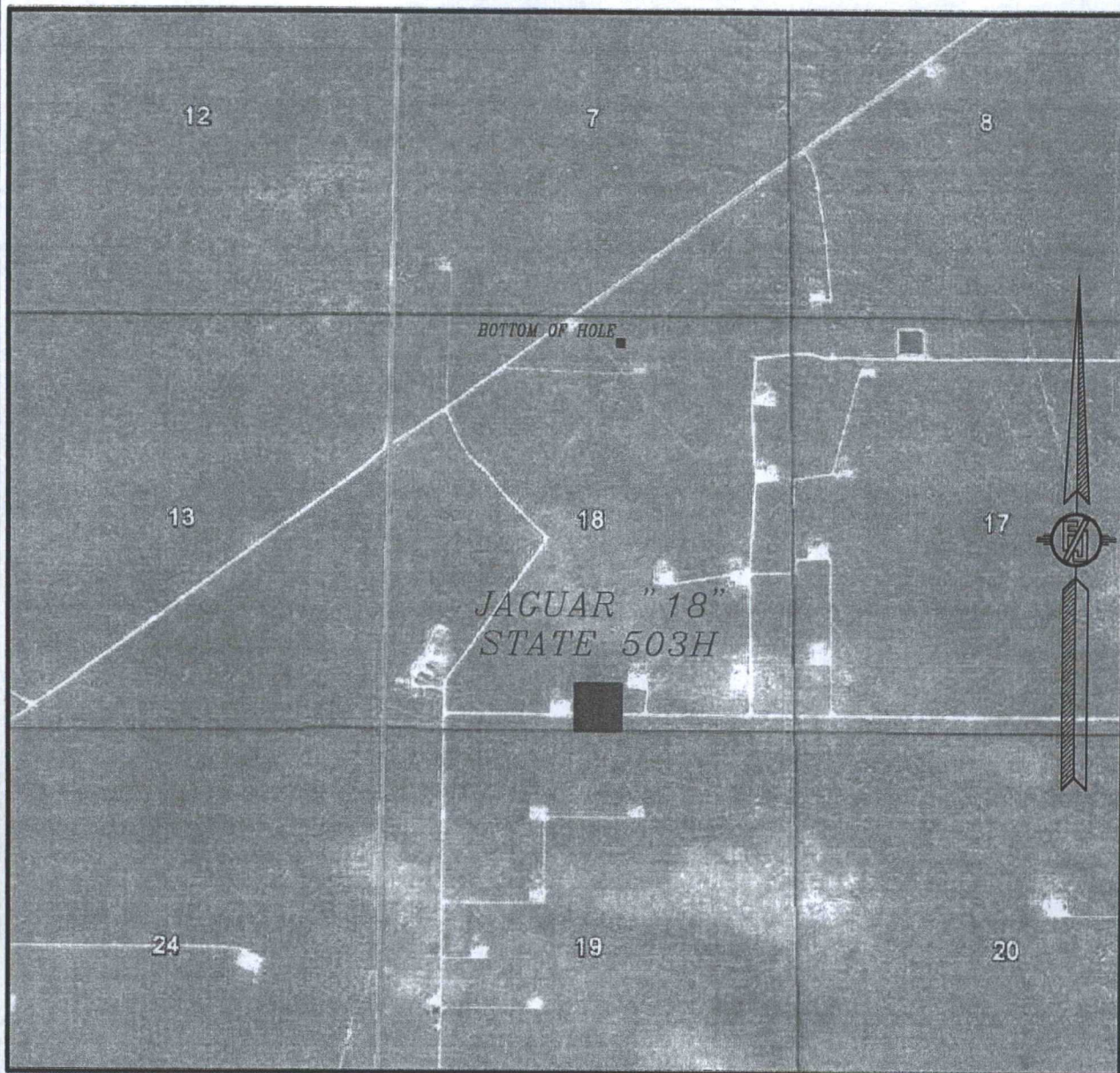
ENDURANCE RESOURCES, LLC
JAGUAR "18" STATE 503H
LOCATED 330 FT. FROM THE SOUTH LINE
AND 2500 FT. FROM THE EAST LINE OF
SECTION 18, TOWNSHIP 23 SOUTH,
RANGE 33 EAST, N.M.P.M.
LEA COUNTY, STATE OF NEW MEXICO

JANUARY 4, 2016

MADRON SURVEYING, INC. 301 SOUTH CANAL (575) 234-3341

SURVEY NO. 4430
CARLSBAD, NEW MEXICO

SECTION 18, TOWNSHIP 23 SOUTH, RANGE 33 EAST, N.M.P.M.
LEA COUNTY, STATE OF NEW MEXICO
AERIAL PHOTO



NOT TO SCALE
AERIAL PHOTO:
GOOGLE EARTH
FEBRUARY 2014

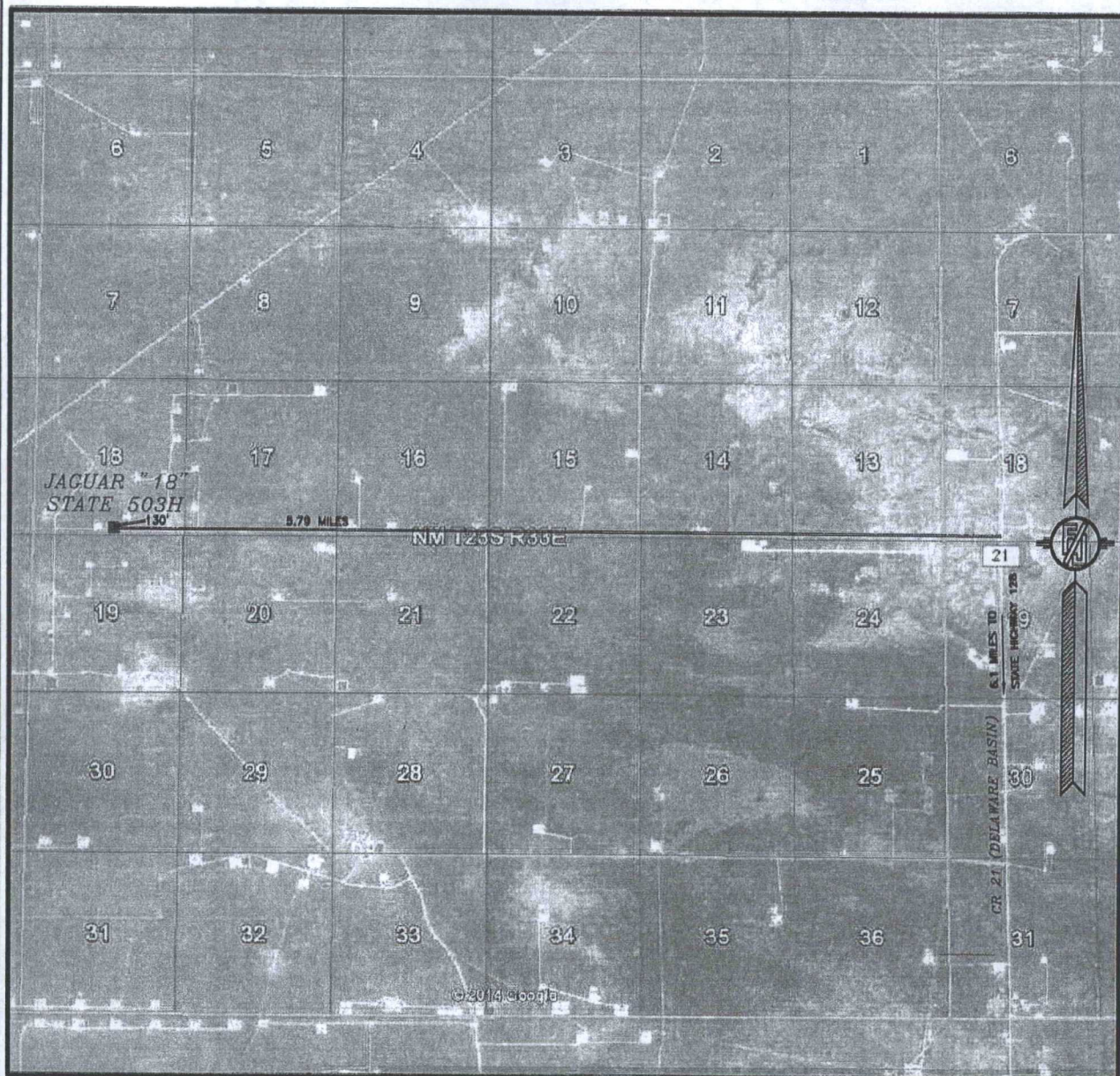
ENDURANCE RESOURCES, LLC
JAGUAR "18" STATE 503H
LOCATED 330 FT. FROM THE SOUTH LINE
AND 2500 FT. FROM THE EAST LINE OF
SECTION 18, TOWNSHIP 23 SOUTH,
RANGE 33 EAST, N.M.P.M.
LEA COUNTY, STATE OF NEW MEXICO

JANUARY 4, 2016

SURVEY NO. 4430

MADRON SURVEYING, INC. 301 SOUTH CANAL (978) 234-3341 CARLSBAD, NEW MEXICO

SECTION 18, TOWNSHIP 23 SOUTH, RANGE 33 EAST, N.M.P.M.
LEA COUNTY, STATE OF NEW MEXICO
ACCESS AERIAL ROUTE MAP



NOT TO SCALE
AERIAL PHOTO:
GOOGLE EARTH
FEBRUARY 2014

ENDURANCE RESOURCES, LLC
JAGUAR "18" STATE 503H
LOCATED 330 FT. FROM THE SOUTH LINE
AND 2500 FT. FROM THE EAST LINE OF
SECTION 18, TOWNSHIP 23 SOUTH,
RANGE 33 EAST, N.M.P.M.
LEA COUNTY, STATE OF NEW MEXICO

JANUARY 4, 2016

SURVEY NO. 4430

MADRON SURVEYING, INC. 301 SOUTH CANAL (575) 234-3341 CARLSBAD, NEW MEXICO