

District I
1625 N. French Dr., Hobbs, NM 88240
Phone: (575) 393-6161 Fax: (575) 393-0720
District II
811 S. First St., Artesia, NM 88210
Phone: (575) 748-1283 Fax: (575) 748-9720
District III
1000 Rio Brazos Road, Aztec, NM 87410
Phone: (505) 334-6178 Fax: (505) 334-6170
District IV
1220 S. St. Francis Dr., Santa Fe, NM 87505
Phone: (505) 476-3460 Fax: (505) 476-3462

State of New Mexico
Energy, Minerals & Natural Resources Department
OIL CONSERVATION DIVISION
1220 South St. Francis Dr.
Santa Fe, NM 87505

Form C-102
Revised August 1, 2011
Submit one copy to appropriate
District Office
☐ AMENDED REPORT

WELL LOCATION AND ACREAGE DEDICATION PLAT

¹ API Number 30-025-47025	² Pool Code 97369	³ Pool Name Red Hills; Bone Spring East
⁴ Property Code 314976	⁵ Property Name ORANGE RAIDER BVP STATE (
⁶ OGRID No. 270329	⁷ Operator Name ENDURANCE RESOURCES, LLC	⁸ Well Number 4H
⁹ Elevation 3393.8		

" Surface Location									
UL or lot no.	Section	Township	Range	Lot Idn	Feet from the	North/South line	Feet from the	East/West line	County
N	35	24 S	34 E		315	SOUTH	2165	WEST	LEA

" Bottom Hole Location If Different From Surface									
UL or lot no.	Section	Township	Range	Lot Idn	Feet from the	North/South line	Feet from the	East/West line	County
C	35	24 S	34 E		330	NORTH	2350	WEST	LEA

¹² Dedicated Acres 160	¹³ Joint or Infill	¹⁴ Consolidation Code	¹⁵ Order No.
---	-------------------------------	----------------------------------	-------------------------

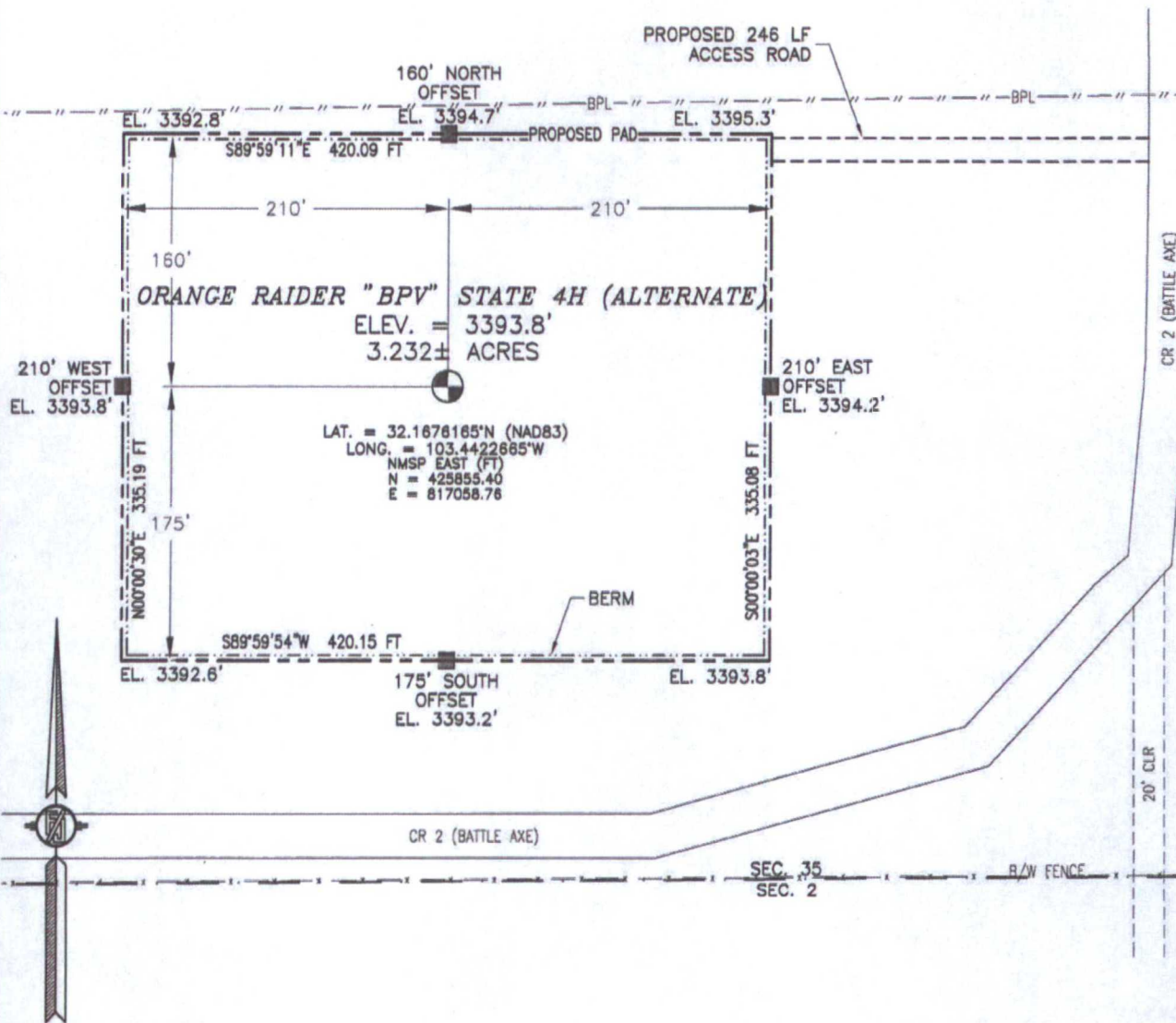
No allowable will be assigned to this completion until all interests have been consolidated or a non-standard unit has been approved by the division.

<p>N89°37'03"E 2644.35 FT</p> <p>N89°36'43"E 2641.43 FT</p> <p>NW CORNER SEC. 35 LAT. = 32.1812683°N LONG. = 103.4492760°W NMSP EAST (FT) N = 430803.99 E = 814848.92</p> <p>BOTTOM OF HOLE LAT. = 32.1803512°N LONG. = 103.4416811°W NMSP EAST (FT) N = 430489.74 E = 817201.49</p> <p>NOTE: LATITUDE AND LONGITUDE COORDINATES ARE SHOWN USING THE NORTH AMERICAN DATUM OF 1983 (NAD83). LISTED NEW MEXICO STATE PLANE EAST COORDINATES ARE GRID (NAD83). BASIS OF BEARING AND DISTANCES USED ARE NEW MEXICO STATE PLANE EAST COORDINATES MODIFIED TO THE SURFACE.</p> <p>ORANGE RAIDER "BVP" STATE 4H (ALTERNATE) ELEV. = 3393.8' LAT. = 32.1678185°N (NAD83) LONG. = 103.4422665°W NMSP EAST (FT) N = 425855.40 E = 817058.76</p> <p>SW CORNER SEC. 35 LAT. = 32.1667564°N LONG. = 103.4492606°W NMSP EAST (FT) N = 425524.83 E = 814897.06</p> <p>SURFACE LOCATION</p> <p>SQ CORNER SEC. 35 LAT. = 32.1667496°N LONG. = 103.4407341°W NMSP EAST (FT) N = 425543.97 E = 817535.54</p> <p>SE CORNER SEC. 35 LAT. = 32.1667396°N LONG. = 103.4322030°W NMSP EAST (FT) N = 425582.32 E = 820175.48</p> <p>E Q CORNER SEC. 35 LAT. = 32.1739948°N LONG. = 103.4322041°W NMSP EAST (FT) N = 428201.72 E = 820153.02</p> <p>DNF</p> <p>2350'</p> <p>330'</p> <p>2165'</p> <p>589°34'49"W 2638.90 FT</p> <p>589°36'06"W 2640.36 FT</p>		<p>" OPERATOR CERTIFICATION</p> <p>I hereby certify that the information contained herein is true and complete to the best of my knowledge and belief, and that this organization either owns a working interest or unleased mineral interest in the land including the proposed bottom hole location or has a right to drill this well at this location pursuant to a contract with an owner of such a mineral or working interest, or to a voluntary pooling agreement or a compulsory pooling order heretofore entered by the division.</p> <p><i>Timlee Tilton</i> 1/8/2016 Signature Date</p> <p>TINLEE TILTON Printed Name</p> <p><i>tinlee@endurance</i> E-mail Address</p> <p><i>resourcesllc.com</i></p> <p>"SURVEYOR CERTIFICATION</p> <p>I hereby certify that the well location shown on this plat was plotted from field notes of actual surveys made by me or under my supervision, and that the same is true and correct to the best of my belief.</p> <p>JANUARY 15, 2016 Date of Survey</p> <p><i>FEIMON F. JARAMILLO</i> Signature and Seal of Professional Surveyor</p> <p>Certificate Number FEIMON F. JARAMILLO, PLS 12797 SURVEY NO. 4431</p>	
---	--	--	--

JAN 15 2016

SECTION 35, TOWNSHIP 24 SOUTH, RANGE 34 EAST, N.M.P.M.
LEA COUNTY, STATE OF NEW MEXICO
SITE MAP

NOTE: LATITUDE AND LONGITUDE COORDINATES ARE SHOWN USING THE NORTH AMERICAN DATUM OF 1983 (NAD83). LISTED NEW MEXICO STATE PLANE EAST COORDINATES ARE GRID (NAD83). BASIS OF BEARING AND DISTANCES USED ARE NEW MEXICO STATE PLANE EAST COORDINATES MODIFIED TO THE SURFACE



0 10 50 100 200

SCALE 1" = 100'

DIRECTIONS TO LOCATION

FROM THE INTERSECTION OF STATE HIGHWAY 128 AND CR 2 (BATTLE AXE) GO SOUTHWEST ON CR 2 FOR APPROX. 0.3 OF A MILE. CONTINUE WEST APPROX. 1.5 MILES. CONTINUE SOUTH APPROX. 0.95 OF A MILE TO BEGIN ROAD SURVEY. FOLLOW ROAD SURVEY WEST FOR 246' TO THE NORTHEAST PAD CORNER FOR THIS LOCATION.

ENDURANCE RESOURCES, LLC
**ORANGE RAIDER "BPV" STATE 4H
(ALTERNATE)**

LOCATED 315 FT. FROM THE SOUTH LINE
AND 2165 FT. FROM THE WEST LINE OF
SECTION 35, TOWNSHIP 24 SOUTH,
RANGE 34 EAST, N.M.P.M.
LEA COUNTY, STATE OF NEW MEXICO

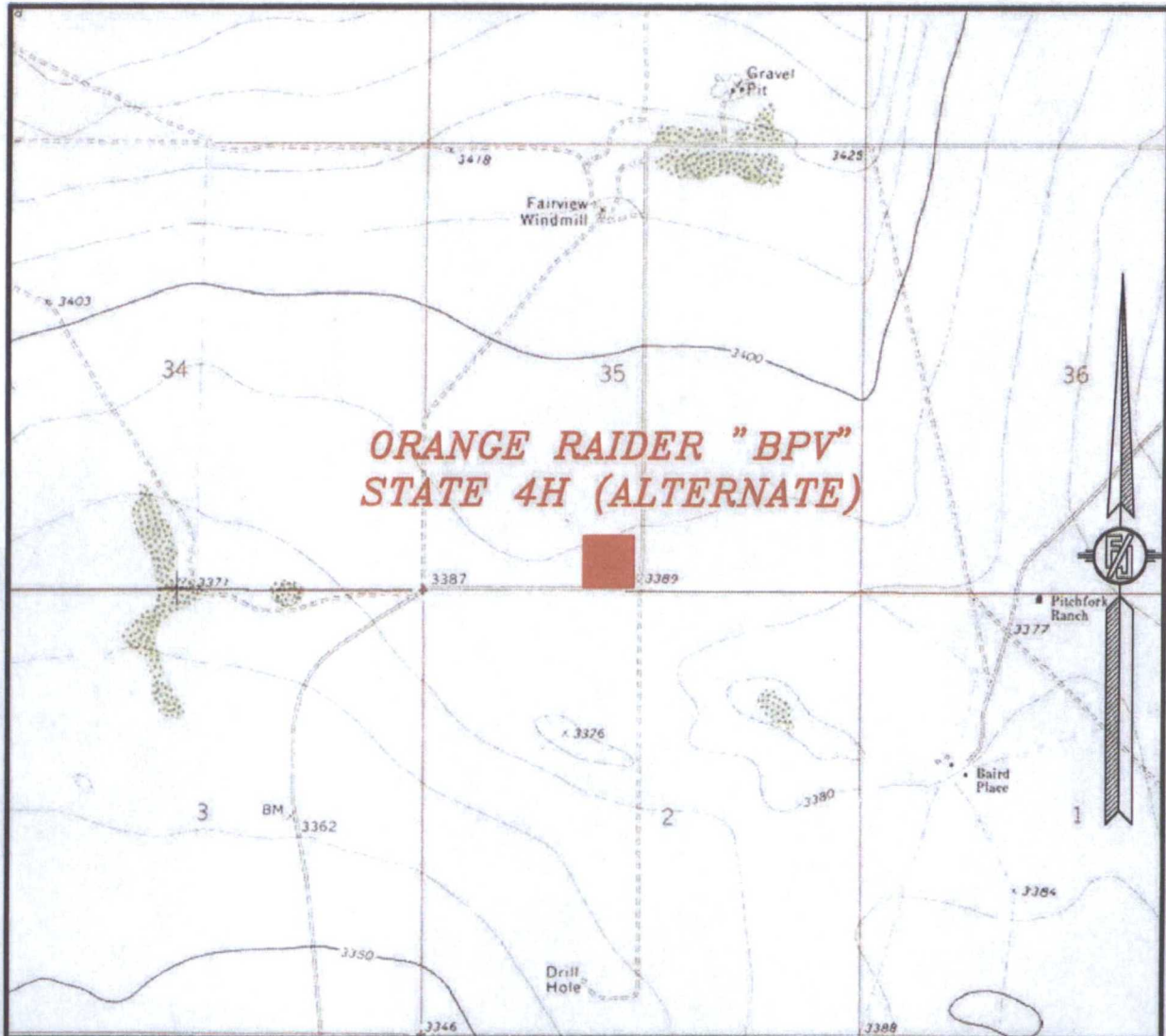
JANUARY 5, 2016

SURVEY NO. 4431

MADRON SURVEYING, INC. 301 SOUTH CANAL (575) 234-3341

CARLSBAD, NEW MEXICO

SECTION 35, TOWNSHIP 24 SOUTH, RANGE 34 EAST, N.M.P.M.
LEA COUNTY, STATE OF NEW MEXICO
LOCATION VERIFICATION MAP



USGS QUAD MAP:
WOODLEY FLAT

NOT TO SCALE

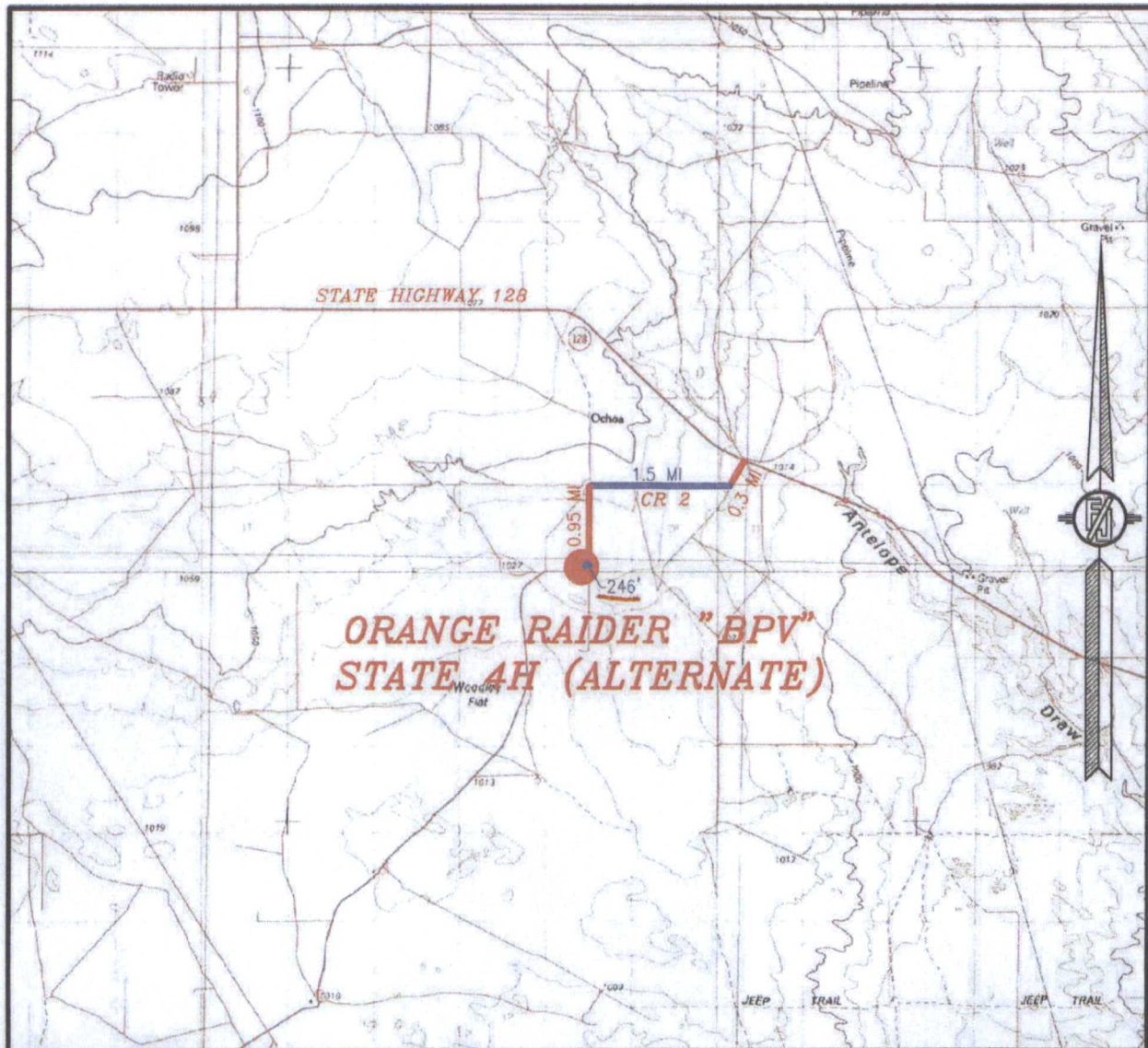
ENDURANCE RESOURCES, LLC
ORANGE RAIDER "BPV" STATE 4H (ALTERNATE)
LOCATED 315 FT. FROM THE SOUTH LINE
AND 2165 FT. FROM THE WEST LINE OF
SECTION 35, TOWNSHIP 24 SOUTH,
RANGE 34 EAST, N.M.P.M.
LEA COUNTY, STATE OF NEW MEXICO

JANUARY 5, 2016

SURVEY NO. 4431

MADRON SURVEYING, INC. 301 SOUTH CANAL (575) 234-3341 CARLSBAD, NEW MEXICO

SECTION 35, TOWNSHIP 24 SOUTH, RANGE 34 EAST, N.M.P.M.
LEA COUNTY, STATE OF NEW MEXICO
VICINITY MAP



DISTANCES IN MILES

NOT TO SCALE

ENDURANCE RESOURCES, LLC
ORANGE RAIDER "BPV" STATE 4H (ALTERNATE)
LOCATED 315 FT. FROM THE SOUTH LINE
AND 2165 FT. FROM THE WEST LINE OF
SECTION 35, TOWNSHIP 24 SOUTH,
RANGE 34 EAST, N.M.P.M.
LEA COUNTY, STATE OF NEW MEXICO

DIRECTIONS TO LOCATION

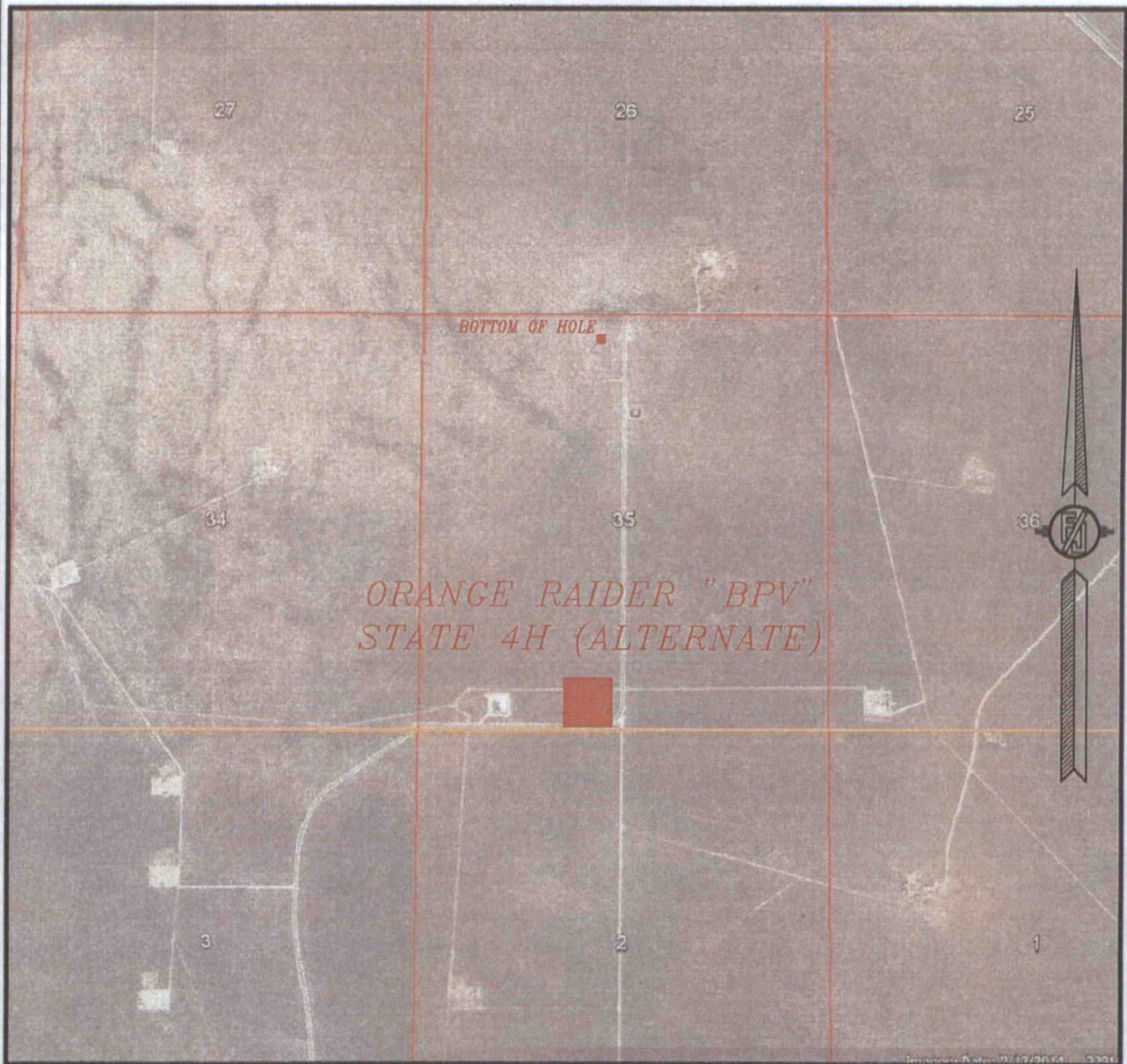
FROM THE INTERSECTION OF STATE HIGHWAY 128 AND CR 2 (BATTLE AXE) GO SOUTHWEST ON CR 2 FOR APPROX. 0.3 OF A MILE. CONTINUE WEST APPROX. 1.5 MILES. CONTINUE SOUTH APPROX. 0.95 OF A MILE TO BEGIN ROAD SURVEY. FOLLOW ROAD SURVEY WEST FOR 246' TO THE NORTHEAST PAD CORNER FOR THIS LOCATION.

JANUARY 5, 2016

SURVEY NO. 4431

MADRON SURVEYING, INC. 301 SOUTH CANAL (575) 234-3341 CARLSBAD, NEW MEXICO

SECTION 35, TOWNSHIP 24 SOUTH, RANGE 34 EAST, N.M.P.M.
LEA COUNTY, STATE OF NEW MEXICO
AERIAL PHOTO



NOT TO SCALE
AERIAL PHOTO:
GOOGLE EARTH
FEBRUARY 2014

ENDURANCE RESOURCES, LLC
ORANGE RAIDER "BPV" STATE 4H
(ALTERNATE)

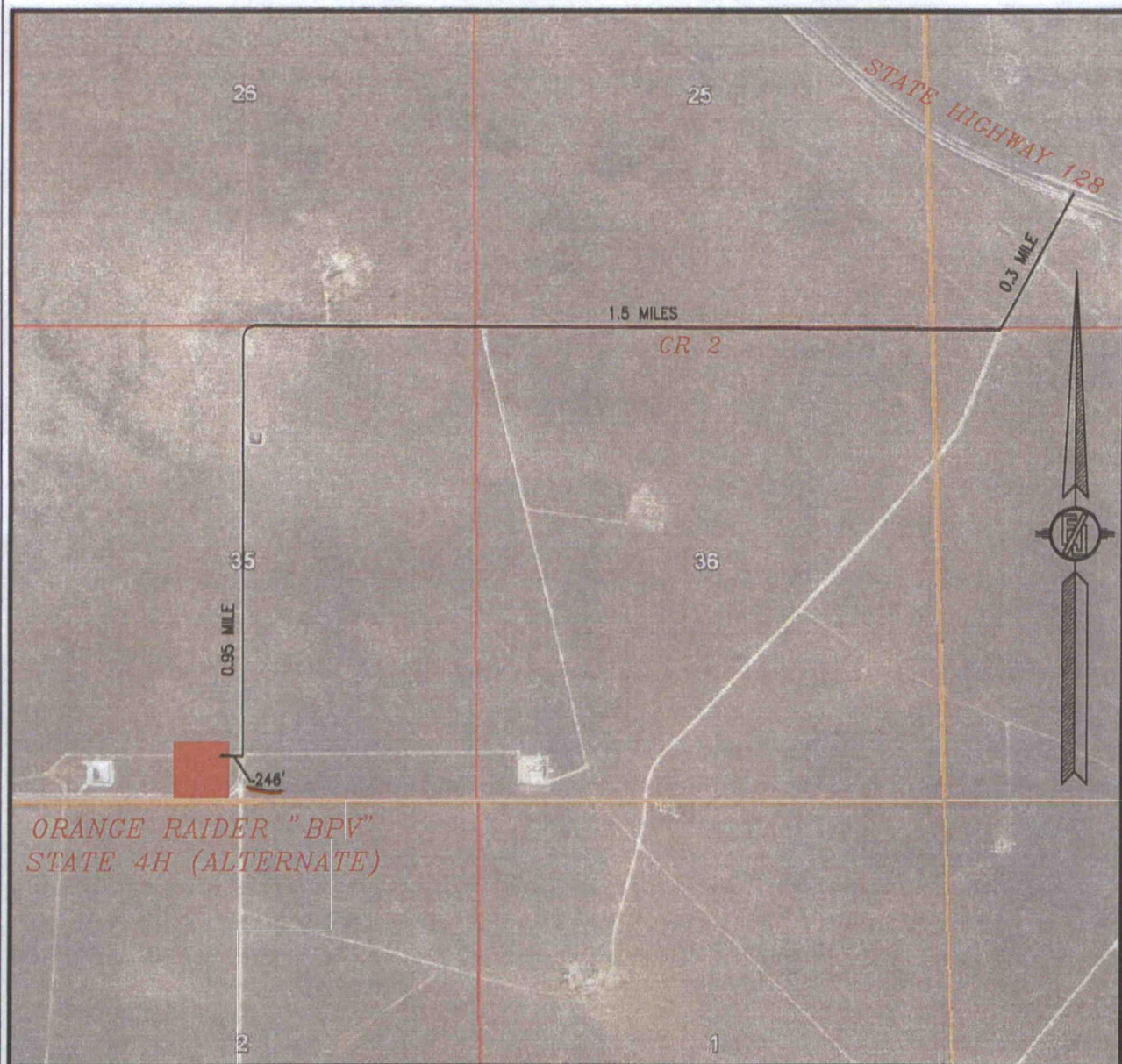
LOCATED 315 FT. FROM THE SOUTH LINE
AND 2165 FT. FROM THE WEST LINE OF
SECTION 35, TOWNSHIP 24 SOUTH,
RANGE 34 EAST, N.M.P.M.
LEA COUNTY, STATE OF NEW MEXICO

JANUARY 5, 2016

SURVEY NO. 4431

MADRON SURVEYING, INC. 301 SOUTH CANAL (575) 234-3341 CARLSBAD, NEW MEXICO

SECTION 35, TOWNSHIP 24 SOUTH, RANGE 34 EAST, N.M.P.M.
LEA COUNTY, STATE OF NEW MEXICO
ACCESS AERIAL ROUTE MAP



NOT TO SCALE
AERIAL PHOTO:
GOOGLE EARTH
FEBRUARY 2014

ENDURANCE RESOURCES, LLC
ORANGE RAIDER "BPV" STATE 4H
(ALTERNATE)

LOCATED 315 FT. FROM THE SOUTH LINE
AND 2165 FT. FROM THE WEST LINE OF
SECTION 35, TOWNSHIP 24 SOUTH,
RANGE 34 EAST, N.M.P.M.
LEA COUNTY, STATE OF NEW MEXICO

JANUARY 5, 2016

SURVEY NO. 4431

MADRON SURVEYING, INC. 301 SOUTH CANAL (878) 234-3341 CARLSBAD, NEW MEXICO