

DEC 23 2015

Form C-102

Revised August 1, 2011

Submit one copy to appropriate District Office

☐ AMENDED REPORT

**District I**  
1625 N. French Dr., Hobbs, NM 88240  
Phone: (575) 393-6161 Fax: (575) 393-0720

**District II**  
811 S. First St., Artesia, NM 88210  
Phone: (575) 748-1283 Fax: (575) 748-9720

**District III**  
1000 Rio Brazos Road, Aztec, NM 87410  
Phone: (505) 334-6178 Fax: (505) 334-6170

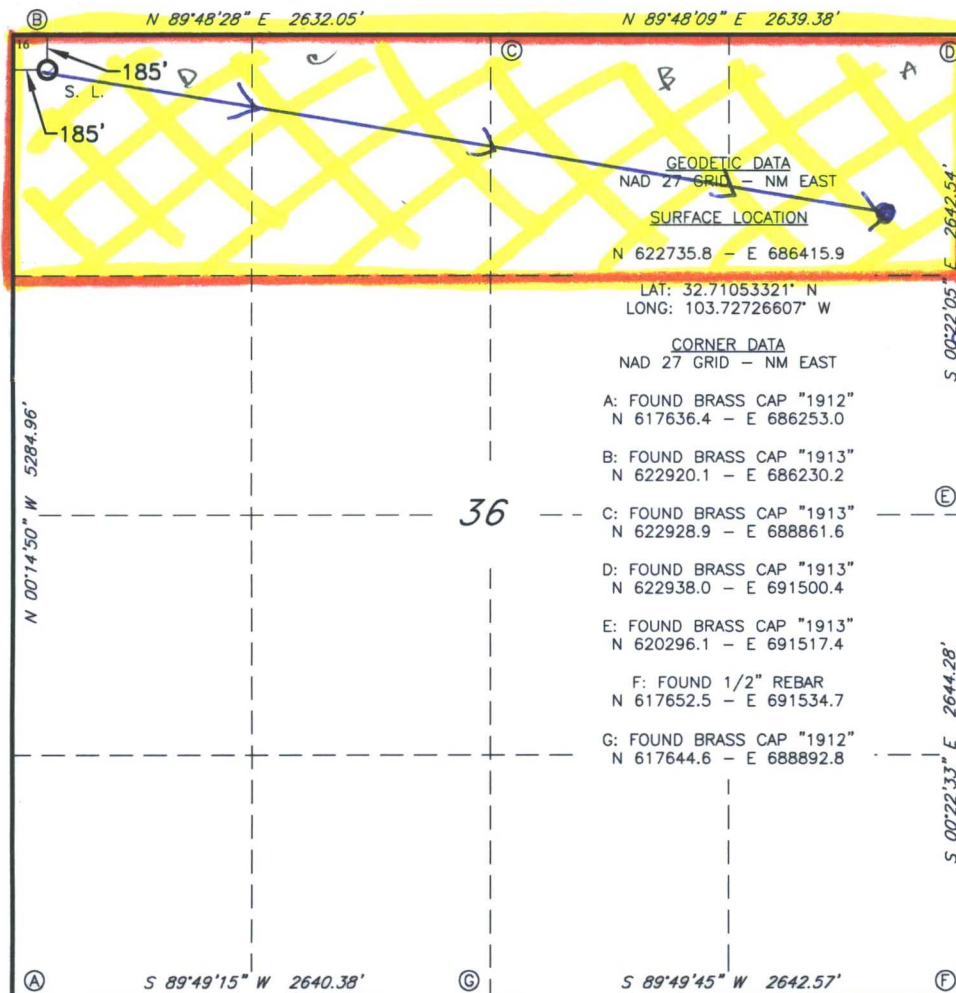
**District IV**  
1220 S. St. Francis Dr., Santa Fe, NM 87505  
Phone: (505) 476-3460 Fax: (505) 476-3462

State of New Mexico  
Energy, Minerals & Natural Resources Department  
OIL CONSERVATION DIVISION  
1220 South St. Francis Dr.  
Santa Fe, NM 87505

# WELL LOCATION AND ACREAGE DEDICATION PLAT

1 API Number 30-025-42695		2 Pool Code 50510		3 Pool Name Guerecho Plains Lower Bone Springs					
4 Property Code 315039		5 Property Name LONE WOLF 36 B2DM STATE COM						6 Well Number 1H	
7 OGRID NO. 14744		8 Operator Name MEWBOURNE OIL COMPANY						9 Elevation 3734'	
10 Surface Location									
UL or lot no. D	Section 36	Township 18S	Range 32E	Lot Idn	Feet from the 185	North/South line NORTH	Feet From the 185	East/West line WEST	County LEA
11 Bottom Hole Location If Different From Surface									
UL or lot no. A	Section 36	Township 18S	Range 32E	Lot Idn	Feet from the 404	North/South line North	Feet from the 517	East/West line East	County Lea
12 Dedicated Acres 160		13 Joint or Infill		14 Consolidation Code		15 Order No.			

No allowable will be assigned to this completion until all interest have been consolidated or a non-standard unit has been approved by the division.



## <sup>17</sup>OPERATOR CERTIFICATION

I hereby certify that the information contained herein is true and complete to the best of my knowledge and belief, and that this organization either owns a working interest or unleased mineral interest in the land including the proposed bottom hole location or has a right to drill this well at this location pursuant to a contract with an owner of such a mineral or working interest, or to a voluntary pooling agreement or a compulsory pooling order heretofore entered by the division.

Signature Jackie Lathan Date 12/18/15  
Printed Name Jackie Lathan

E-mail Address

## <sup>18</sup> SURVEYOR CERTIFICATION

*I hereby certify that the well location shown on this plat was plotted from field notes of actual surveys made by me or under my supervision, and that the same is true and correct to the best of my belief.*

9-24-2015

Date of Survey \_\_\_\_\_

Signature and Seal of Professional Surveyor

## 19680

Certificate Number

RRC - Firm No.: TX 10193838 NM 4655451 - Job No.: LS1509529

JAN 27 2016



COMPANY: Mewbourne Oil Company  
 WELL: Lone Wolf 36 B2DM St Com #1H  
 COUNTY: Lea County N.M.  
 DATUM: NAD 1927 (NADCON CONUS)  
 RIG: Patterson Patterson 243



GRID CORRECTION: To convert a Magnetic Direction to a Grid Direction, Add 6.92°

OFFICE: 936.582.7296

GEODETTIC ZONE: New Mexico East 3001						
3734 + 27 @ 3761.0usft (Patterson 243)						
GROUND ELEVATION: 3734.0						
+N/-S	+E/-W	Northing	Easting	Latitude	Longitude	Slot
0.0	0.0	622735.80	686415.90	32° 42' 37.920 N	103° 43' 38.158 W	

PLAN SECTIONS										
Sec	MD	Inc	Azi	TVD	+N/-S	+E/-W	Dleg	TFace	VSec	Target
1	8631.0	2.31	253.25	8627.8	21.3	-133.8	0.00	0.00	-135.5	
2	8900.0	2.31	253.25	8896.6	18.2	-144.2	0.00	0.00	-145.2	
3	9936.4	83.57	104.66	9610.1	-150.8	448.4	8.25	-148.70	467.0	LP Lone Wolf 36B2DM st Com1H
4	10050.6	90.55	98.33	9616.0	-173.5	560.0	8.24	-42.36	580.8	PBHL Lone Wolf 36 B2DM St Com 1H
5	14296.5	90.55	98.33	9575.0	-788.9	4760.9	0.00	0.00	4825.8	

SHL 185' FNL; 185' FWL  
 Section 36-18S-32E  
 PBHL 990' FNL; 330' FEL  
 Section 36-18S-32E

