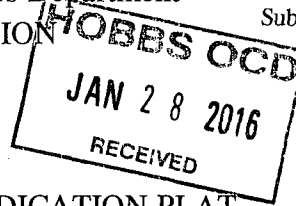


District I
1625 N. French Dr., Hobbs, NM 88240
Phone: (575) 393-6161 Fax: (575) 393-0720
District II
811 S. First St., Artesia, NM 88210
Phone: (575) 748-1283 Fax: (575) 748-9720
District III
1000 Rio Brazos Road, Aztec, NM 87410
Phone: (505) 334-6178 Fax: (505) 334-6170
District IV
1220 S. St. Francis Dr., Santa Fe, NM 87505
Phone: (505) 476-3460 Fax: (505) 476-3462

State of New Mexico
Energy, Minerals & Natural Resources Department
OIL CONSERVATION DIVISION
1220 South St. Francis Dr.
Santa Fe, NM 87505

Form C-102
Revised August 1, 2011
Submit one copy to appropriate
District Office
☐ AMENDED REPORT



WELL LOCATION AND ACREAGE DEDICATION PLAT

¹ API Number 30-025-43043	² Pool Code 22900	³ Pool Name Eunice, Bli - Tu - Dr, North
⁴ Property Code 37346	⁵ Property Name WEST BLINEBRY DRINKARD UNIT	⁶ Well Number #195
⁷ OGRID No. 873	⁸ Operator Name APACHE CORPORATION	⁹ Elevation 3491.409

¹⁰ Surface Location

UL or lot no. 6 F	Section 9	Township 21 S	Range 37 E	Lot Idn	Feet from the 2,585	North/South line NORTH	Feet from the 1,965	East/West line WEST	County LEA
----------------------	--------------	------------------	---------------	---------	------------------------	---------------------------	------------------------	------------------------	---------------

¹¹ Bottom Hole Location If Different From Surface

UL or lot no.	Section	Township	Range	Lot Idn	Feet from the	North/South line	Feet from the	East/West line	County
---------------	---------	----------	-------	---------	---------------	------------------	---------------	----------------	--------

¹² Dedicated Acres 40	¹³ Joint or Infill	¹⁴ Consolidation Code	¹⁵ Order No.
-------------------------------------	-------------------------------	----------------------------------	-------------------------

No allowable will be assigned to this completion until all interests have been consolidated or a non-standard unit has been approved by the division.

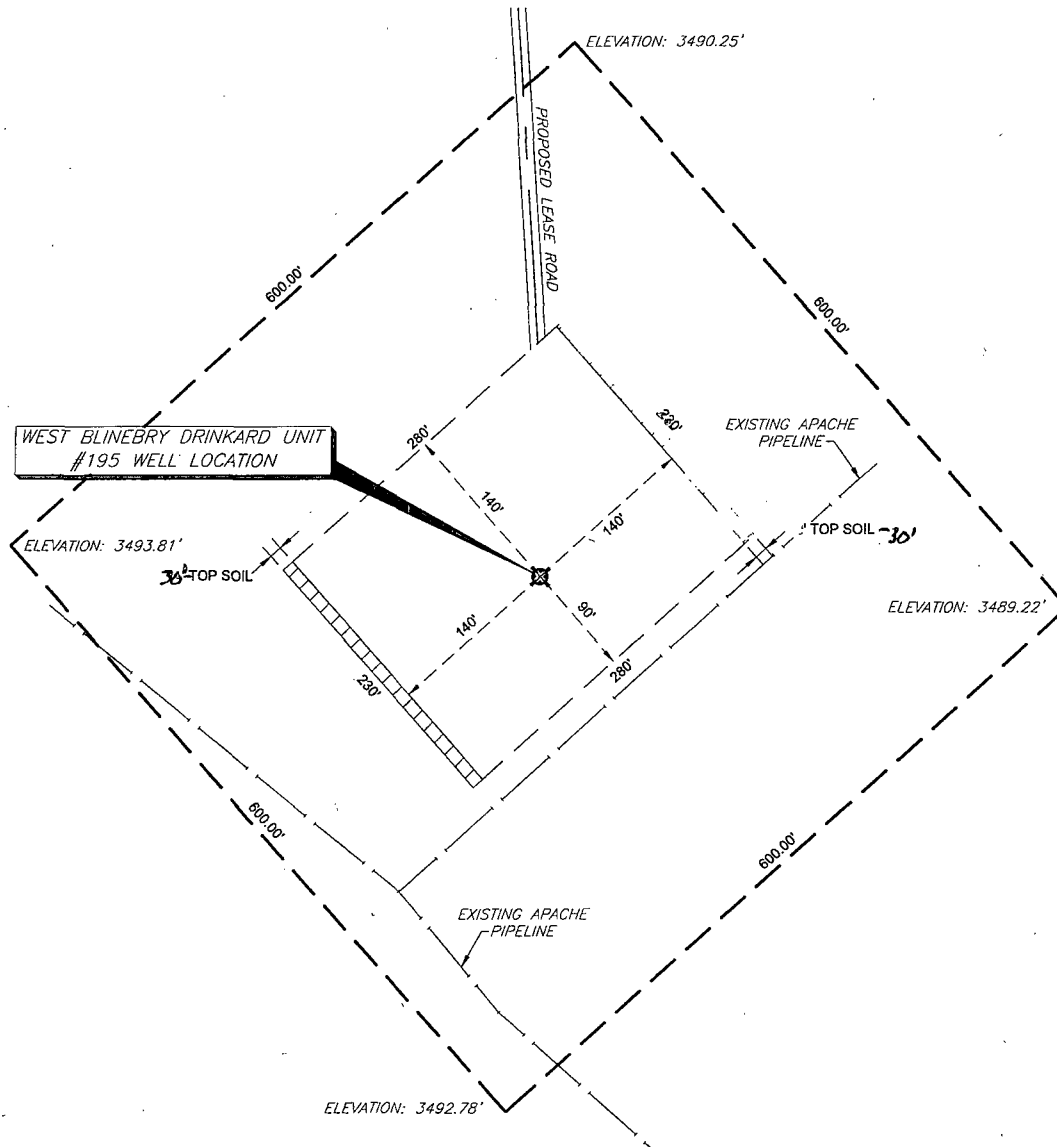
SECTION 9, TOWNSHIP 21 SOUTH, RANGE 37 EAST P.M.

<p>FOUND 3 INCH IRON PIPE, MARKED "U.S. GENERAL LAND OFFICE" LAT: 32.500425 N LON: -103.175936 W NMSPC E: 547704.157 NMSPC E: 856835.088 (N.A.D. 27) LAT: 32.500547 N LON: -103.176407 W NMSPC E: 547764.692 NMSPC E: 888019.092 (N.A.D. 83)</p>	<p>FOUND 3 INCH IRON PIPE, MARKED "U.S. GENERAL LAND OFFICE" LAT: 32.500407 N LON: -103.158794 W NMSPC E: 547755.306 NMSPC E: 862120.424 (N.A.D. 27) LAT: 32.500528 N LON: -103.159265 W NMSPC E: 547815.516 NMSPC E: 903304.383 (N.A.D. 83)</p>	<p>¹⁷ OPERATOR CERTIFICATION I hereby certify that the information contained herein is true and complete to the best of my knowledge and belief, and that this organization either owns a working interest or unleased mineral interest in the land including the proposed bottom hole location or has a right to drill this well at this location pursuant to a contract with an owner of such a mineral or working interest, or to a voluntary pooling agreement or a compulsory pooling order heretofore entered by the division. Signature: <u>Sorina L Flores</u> 10/20/14 Printed Name: <u>Sorina L Flores</u> E-mail Address: <u>sorina.flores@apachecorp.com</u></p>
<p>FOUND 3 INCH IRON PIPE, MARKED "U.S. GENERAL LAND OFFICE" LAT: 32.485905 N LON: -103.175930 W NMSPC E: 542421.570 NMSPC E: 856894.168 (N.A.D. 27) LAT: 32.486027 N LON: -103.176401 W NMSPC E: 542481.998 NMSPC E: 888078.309 (N.A.D. 83)</p>	<p>FOUND 5/8 INCH IRON ROD, CAPPED "WEST ENGINEERING" LAT: 32.485888 N LON: -103.158797 W NMSPC E: 542473.371 NMSPC E: 862177.445 (N.A.D. 27) LAT: 32.486010 N LON: -103.159268 W NMSPC E: 542533.476 NMSPC E: 903361.550 (N.A.D. 83)</p>	<p>¹⁸ SURVEYOR CERTIFICATION I hereby certify that the well location shown on this plat was plotted from field notes of actual surveys made by me or under my supervision, and that the same is true and correct to the best of my belief. 4-30-2014 Date of Survey Signature and Seal of Professional Surveyor: <u>[Signature]</u> Certificate Number: <u>20559</u></p>

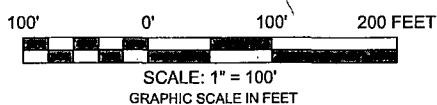
FEB 01 2016

LEA COUNTY, NEW MEXICO

SECTION NINE (9), TOWNSHIP TWENTY-ONE (21) SOUTH,
RANGE THIRTY-SEVEN (37) EAST OF THE PRINCIPAL MERIDIAN



COORDINATE TABLE				
WELL NAME	NORTHING (N.A.D. 27)	EASTING (N.A.D. 27)	NORTHING (N.A.D. 83)	EASTING (N.A.D. 83)
WBDU #195 SURFACE LOCATION & PENETRATION POINT	545138.385	858828.918	545198.749	900012.976
ELEVATION	LATITUDE (N.A.D. 27)	LONGITUDE (N.A.D. 27)	LATITUDE (N.A.D. 83)	LONGITUDE (N.A.D. 83)
3,491.409'	32.493314 N	-103.169560 W	32.493435 N	-103.170032 W



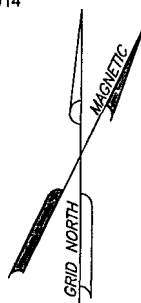
PREPARED FROM SURVEY
DATED: AUGUST 1, 2014

NOTES:

1.) BEARINGS & COORDINATES SHOWN HEREON ARE REFERENCED TO THE NEW MEXICO STATE PLANE COORDINATE SYSTEM, N.A.D. 27 & 83 DATUM (NEW MEXICO EAST ZONE) DERIVED FROM GPS OBSERVATIONS AND ARE BASED REFERENCE STATIONS - T 14° - MALJAMAR NE (1985)

2.) LATITUDE & LONGITUDE ARE NAD 83 & 27 GEOGRAPHIC.

3.) THIS IS AN WELL PLAT AND DOES NOT REPRESENT A TRUE BOUNDARY SURVEY. THIS SURVEY IS BASED ON OWNERSHIP AND EASEMENT INFORMATION PROVIDED BY APACHE CORPORATION. SURVEYOR DID NOT ABSTRACT SUBJECT TRACT AND THERE MAY BE EASEMENTS OR OTHER ENCUMBRANCES THAT AFFECT THE SUBJECT TRACT THAT ARE NOT SHOWN HEREON.



THE WEST BLINEBRY DRINKARD UNIT #195 IS LOCATED
APPROXIMATELY 4 MILES NORTH-NORTHWEST OF
EUNICE, NEW MEXICO

Apache

Location of

WEST BLINEBRY DRINKARD UNIT #195

Surface Location & Penetration Point: 2585' FNL & 1965' FWL

Section 9, Township 21 South, Range 37 East of P.M.

Lea County, New Mexico



**TRANSGLOBAL
SERVICES LLC**

8205 Camp Bowie West, Suite 204
Fort Worth, Texas 76116
(817) 386-0362 ~ Fax (882) 224-3377

DRAWN BY: P.R.W. DATE: 8-04-14

CHECKED BY: DATE:

SCALE: 1" = 100'

APP:

DWG. NO.

WBDU #195
WELL LOCATION

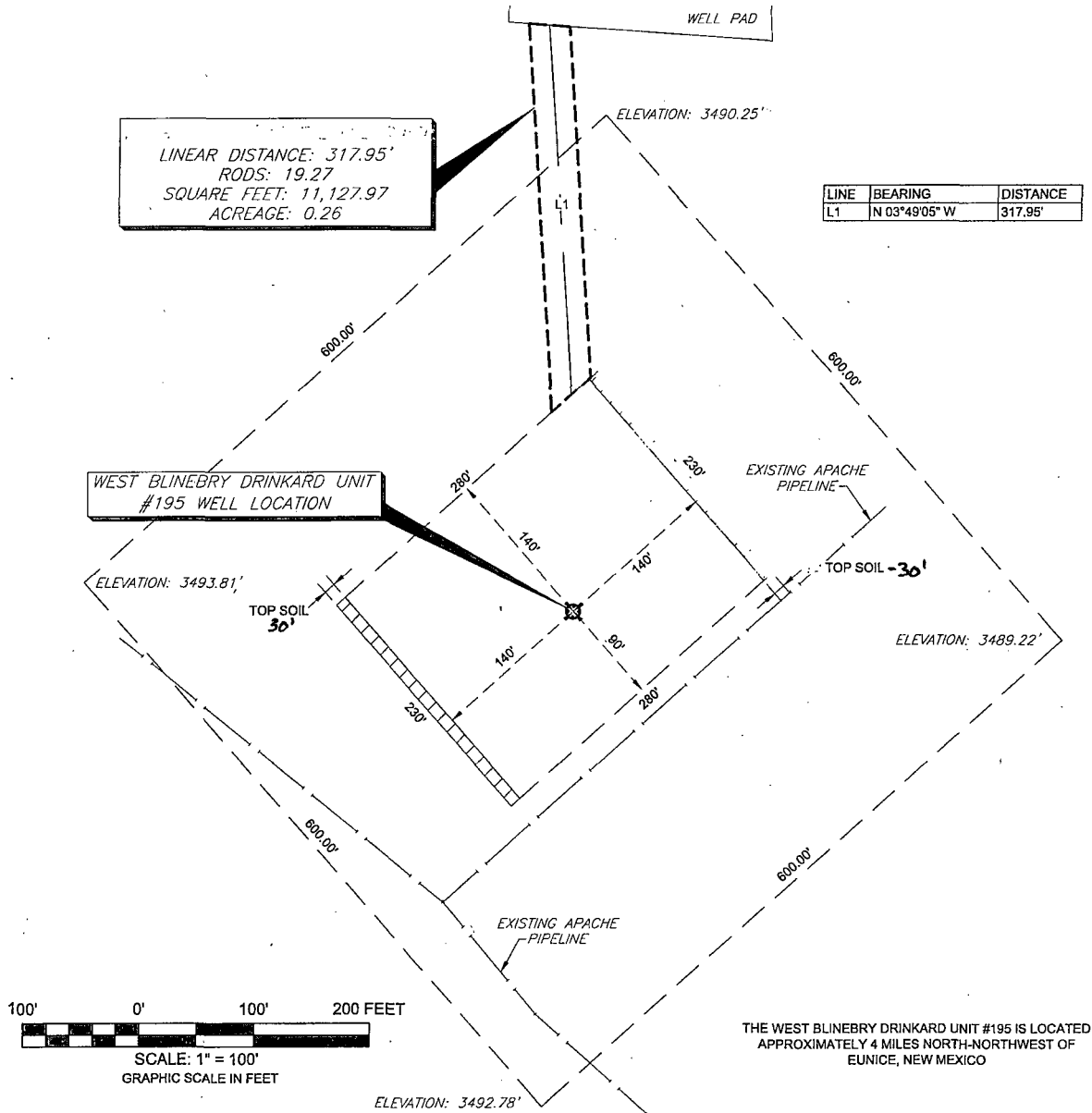
PAGE 1 OF 1

REV.

0

LEA COUNTY, NEW MEXICO

SECTION NINE (9), TOWNSHIP TWENTY-ONE (21) SOUTH,
RANGE THIRTY-SEVEN (37) EAST OF THE PRINCIPAL MERIDIAN



COORDINATE TABLE				
WELL NAME	NORTHING (N.A.D. 27)	EASTING (N.A.D. 27)	NORTHING (N.A.D. 83)	EASTING (N.A.D. 83)
WBDU #195 SURFACE LOCATION & PENETRATION POINT	545138.385	858828.918	545198.749	900012.976
ELEVATION	LATITUDE (N.A.D. 27)	LONGITUDE (N.A.D. 27)	LATITUDE (N.A.D. 83)	LONGITUDE (N.A.D. 83)
3,491.409'	32.493314 N	-103.169560 W	32.493435 N	-103.170032 W

PREPARED FROM SURVEY
DATED: AUGUST 1, 2014

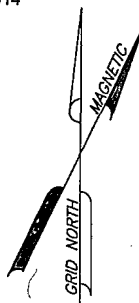
NOTES:

- 1.) BEARINGS & COORDINATES SHOWN HEREON ARE REFERENCED TO THE NEW MEXICO STATE PLANE COORDINATE SYSTEM, N.A.D. 27 & 83 DATUM (NEW MEXICO EAST ZONE) DERIVED FROM GPS OBSERVATIONS AND ARE BASED REFERENCE STATIONS - "E 148" - MALJAMAR NE (1985)
- 2.) LATITUDE & LONGITUDE ARE NAD 83 & 27 GEOGRAPHIC.
- 3.) THIS IS AN WELL PLAT AND DOES NOT REPRESENT A TRUE BOUNDARY SURVEY. THIS SURVEY IS BASED ON OWNERSHIP AND EASEMENT INFORMATION PROVIDED BY APACHE CORPORATION. SURVEYOR DID NOT ABSTRACT SUBJECT TRACT AND THERE MAY BE EASEMENTS OR OTHER ENCUMBRANCES THAT AFFECT THE SUBJECT TRACT THAT ARE NOT SHOWN HEREON.



**TRANSGLOBAL
SERVICES LLC**

8205 Camp Bowie West, Suite 204
Fort Worth, Texas 76116
(817) 386-0362 ~ Fax (682) 224-3377



Apache

Location of

WEST BLINEBRY DRINKARD UNIT #195

Surface Location & Penetration Point: 2585' FNL & 1965' FWL

Section 9, Township 21 South, Range 37 East of P.M.

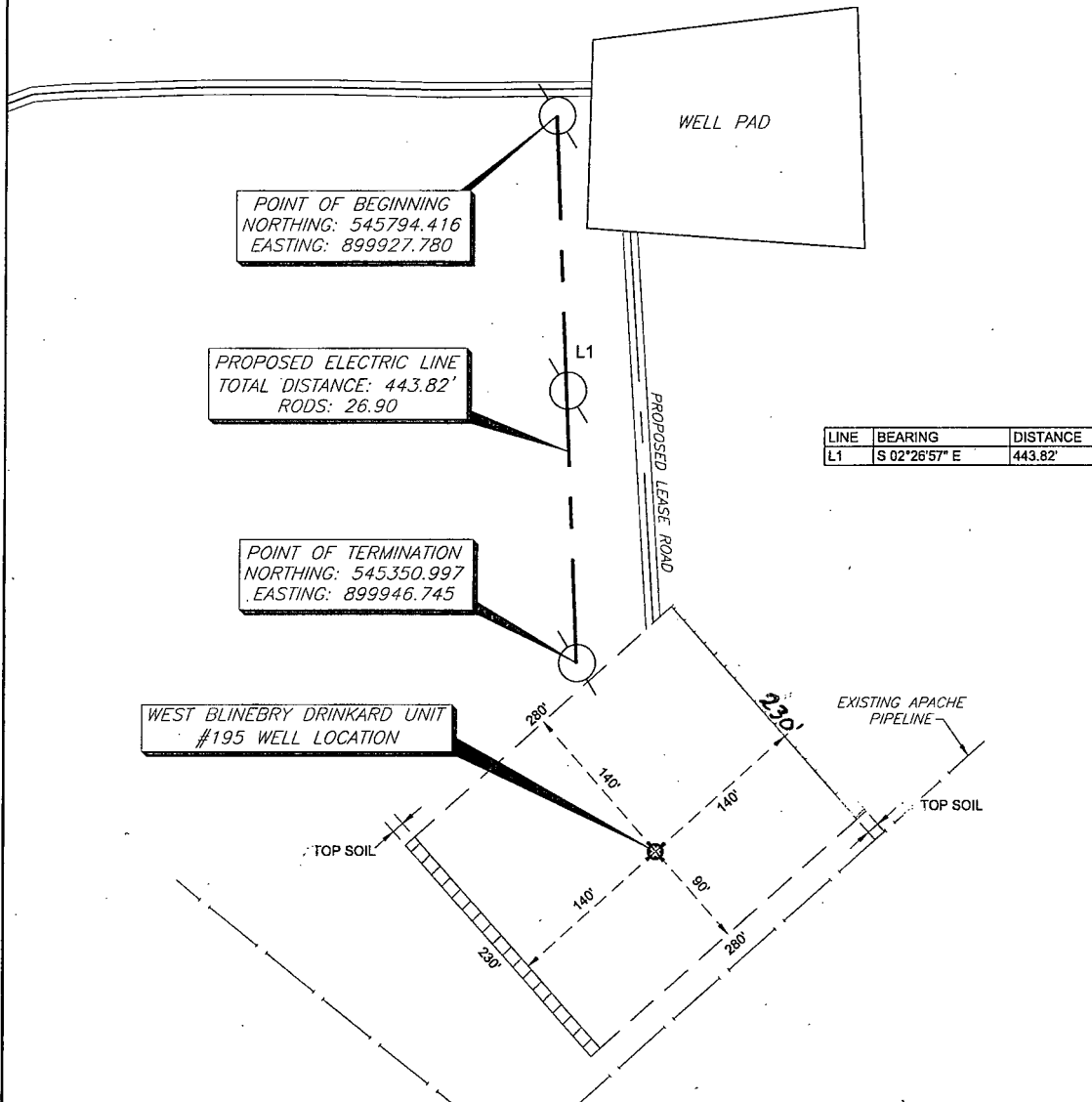
Lea County, New Mexico

DRAWN BY: P.R.W.	DATE: 8-04-14	DWG. NO.	REV.
CHECKED BY:	DATE:	WBDU #195 WELL LOCATION	0
SCALE: 1" = 100'	APP:	PAGE 1 OF 1	

LEA COUNTY, NEW MEXICO

SECTION NINE (9), TOWNSHIP TWENTY-ONE (21) SOUTH,
RANGE THIRTY-SEVEN (37) EAST OF THE PRINCIPAL MERIDIAN

Exhibit
1



COORDINATE TABLE				
WELL NAME	NORTHING (N.A.D. 27)	EASTING (N.A.D. 27)	NORTHING (N.A.D. 83)	EASTING (N.A.D. 83)
WBDU #195 SURFACE LOCATION & PENETRATION POINT	545138.385	858828.918	545198.749	900012.976
ELEVATION	LATITUDE (N.A.D. 27)	LONGITUDE (N.A.D. 27)	LATITUDE (N.A.D. 83)	LONGITUDE (N.A.D. 83)
3,491.409'	32.493314 N	-103.169560 W	32.493435 N	-103.170032 W

100' 0' 100' 200 FEET
SCALE: 1" = 100'
GRAPHIC SCALE IN FEET

THE WEST BLINEBRY DRINKARD UNIT #195 IS LOCATED
APPROXIMATELY 4 MILES NORTH-NORTHWEST OF
EUNICE, NEW MEXICO

PREPARED FROM SURVEY
DATED: AUGUST 1, 2014

NOTES:

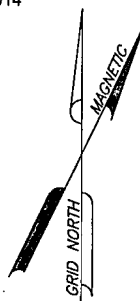
1.) BEARINGS & COORDINATES SHOWN HEREON ARE REFERENCED TO THE NEW MEXICO STATE PLANE COORDINATE SYSTEM, N.A.D. 27 & 83 DATUM (NEW MEXICO EAST ZONE) DERIVED FROM GPS OBSERVATIONS AND ARE BASED REFERENCE STATIONS - "E 148" - MALJAMAR NE (1985)

2.) LATITUDE & LONGITUDE ARE NAD 83 & 27 GEOGRAPHIC.

3.) THIS IS AN WELL PLAT AND DOES NOT REPRESENT A TRUE BOUNDARY SURVEY. THIS SURVEY IS BASED ON OWNERSHIP AND EASEMENT INFORMATION PROVIDED BY APACHE CORPORATION. SURVEYOR DID NOT ABSTRACT SUBJECT TRACT AND THERE MAY BE EASEMENTS OR OTHER ENCUMBRANCES THAT AFFECT THE SUBJECT TRACT THAT ARE NOT SHOWN HEREON.



**TRANSGLOBAL
SERVICES LLC**
8205 Camp Bowie West, Suite 204
Fort Worth, Texas 76116
(817) 386-0362 ~ Fax (882) 224-3377



Apache

Location of

PROPOSED ELECTRICAL LINE

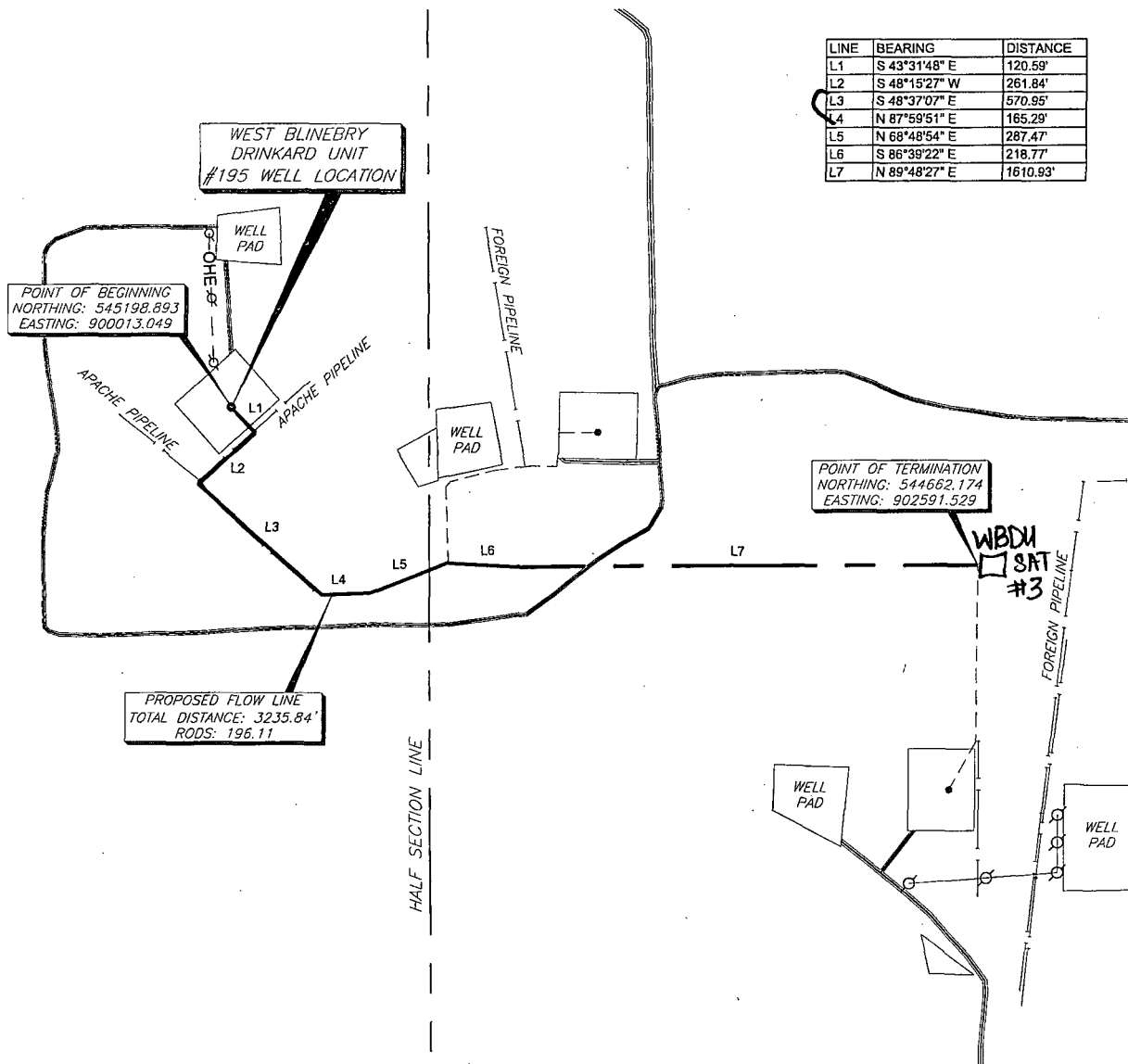
Section 9, Township 21 South, Range 37 East of P.M.

Lea County, New Mexico

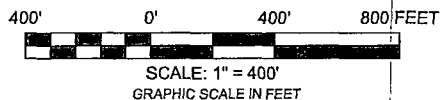
DRAWN BY: P.R.W.	DATE: 8-04-14	DWG. NO.	REV.
CHECKED BY:	DATE:	WBDU #195 WELL LOCATION	0
SCALE: 1" = 100'	APP.:	PAGE 1 OF 1	

Exhibit
2

LINE	BEARING	DISTANCE
L1	S 43°31'48" E	120.59'
L2	S 48°15'27" W	261.84'
L3	S 48°37'07" E	570.95'
L4	N 87°59'51" E	165.29'
L5	N 68°48'54" E	287.47'
L6	S 86°39'22" E	128.77'
L7	N 89°48'27" E	1610.93'



COORDINATE TABLE				
WELL NAME	NORTHING (N.A.D. 27)	EASTING (N.A.D. 27)	NORTHING (N.A.D. 83)	EASTING (N.A.D. 83)
WBDU #195 SURFACE LOCATION & PENETRATION POINT	545138.385	858828.918	545198.749	900012.976
ELEVATION	LATITUDE (N.A.D. 27)	LONGITUDE (N.A.D. 27)	LATITUDE (N.A.D. 83)	LONGITUDE (N.A.D. 83)
3,491.409'	32.493314 N	-103.169560 W	32.493435 N	-103.170032 W



PREPARED FROM SURVEY
DATED: AUGUST 1, 2014

NOTES:

1.) BEARINGS & COORDINATES SHOWN HEREON ARE REFERENCED TO THE NEW MEXICO STATE PLANE COORDINATE SYSTEM, N.A.D. 27 & 83 DATUM (NEW MEXICO EAST ZONE) DERIVED FROM GPS OBSERVATIONS AND ARE BASED REFERENCE STATIONS - "E 148" - MALJAMAR NE (1985)

2.) LATITUDE & LONGITUDE ARE NAD 83 & 27 GEOGRAPHIC.

3.) THIS IS AN WELL PLAT AND DOES NOT REPRESENT A TRUE BOUNDARY SURVEY. THIS SURVEY IS BASED ON OWNERSHIP AND EASEMENT INFORMATION PROVIDED BY APACHE CORPORATION. SURVEYOR DID NOT ABSTRACT SUBJECT TRACT AND THERE MAY BE EASEMENTS OR OTHER ENCUMBRANCES THAT AFFECT THE SUBJECT TRACT THAT ARE NOT SHOWN HEREON.

THE WEST BLINEBRY DRINKARD UNIT #195 IS LOCATED
APPROXIMATELY 4 MILES NORTH-NORTHWEST OF
EUNICE, NEW MEXICO

Apache

Location of
PROPOSED FLOW LINE

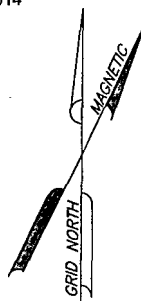
Section 9, Township 21 South, Range 37 East of P.M.

Lea County, New Mexico



TRANSGLOBAL
SERVICES LLC

8205 Camp Bowie West, Suite 204
Fort Worth, Texas 76116
(817) 386-0362 ~ Fax (882) 224-3377



DRAWN BY: P.R.W. DATE: 8-04-14

DATE: 8-04-14

CHECKED BY:

DATE: _____

DWG. NO.

Y/BDJ #195

REV.

9

PAGE 1 OF 1



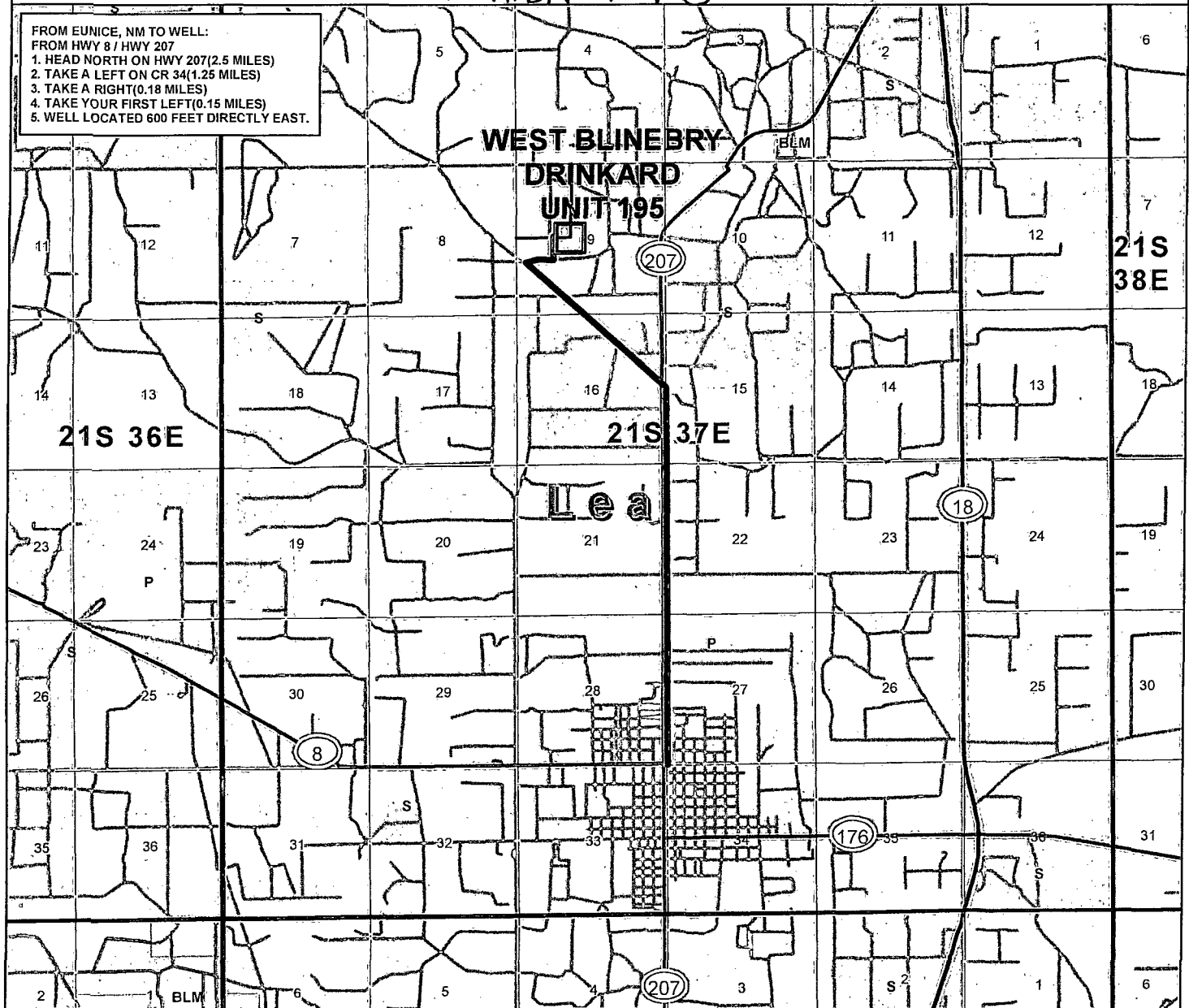
WEST BLINEBRY DRINKARD UNIT 195
2585' FNL, 1965' FWL
SEC 9, T21S R37E



Exhibit # 1B

FROM EUNICE, NM TO WELL:
1. HEAD NORTH ON HWY 207(2.5 MILES)
2. TAKE A LEFT ON CR 34(1.25 MILES)
3. TAKE A RIGHT(0.18 MILES)
4. TAKE YOUR FIRST LEFT(0.15 MILES)
5. WELL LOCATED 600 FEET DIRECTLY EAST.

WEST BLINEBRY
DRINKARD
UNIT 195

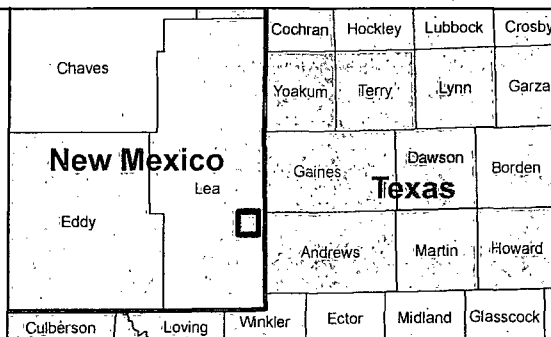


1 inch = 5,280 feet



Legend

- 10 mi buffer
- BLM
- Private
- State
- Routes
- Permit
- Gas
- Oil
- Injection Well
- Plugged and Abandoned
- Plugged
- Shut-in Gas
- Shut-in Oil
- Temporarily Abandoned



NAD 1927 StatePlane
New Mexico East FIPS 3001
Projection: Transverse Mercator
False Easting: 500000.000000
False Northing: 0.000000
Central Meridian: -104.333333
Scale Factor: 0.999909
Latitude Of Origin: 31.000000
Linear Unit: Foot US
GCS North American 1927
Datum: D North American 1927

Drawn By: Nicholas Tallant

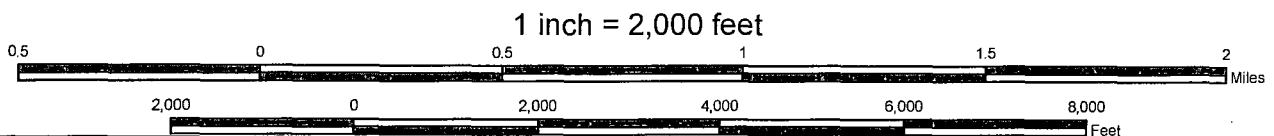
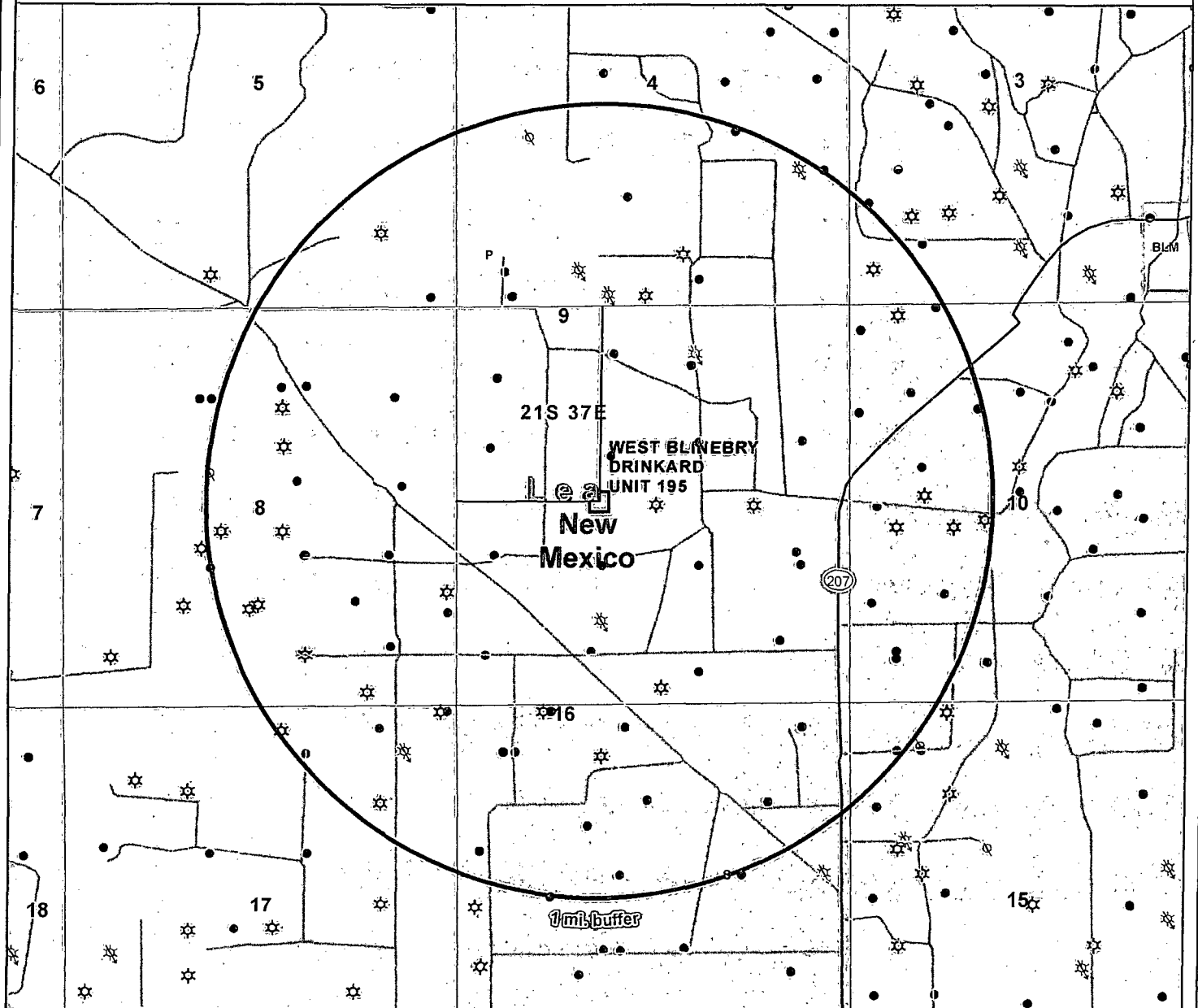
Checked by:

Date: 8/4/2014

Sheet
1 of 1

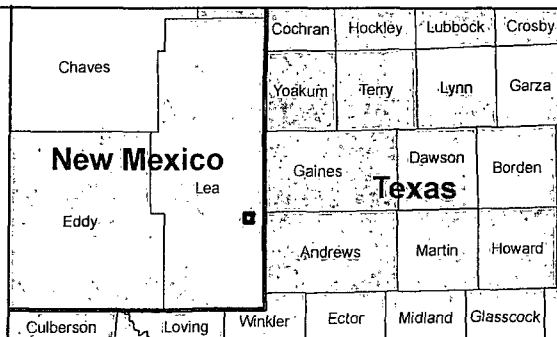


WEST BLINEBRY DRINKARD UNIT 195
2585' FNL, 1965' FWL
SEC 9, T21S R37E
LEA, NM



Legend

- | | |
|-----------------------|-----------------------|
| Apache Well | Shut-in Gas |
| Bottom Hole Location | Shut-in Oil |
| Permit | Temporarily Abandoned |
| Gas | Horizontals |
| Oil | 1 mi. buffer |
| Injection Well | BLM |
| Plugged and Abandoned | Private |
| Plugged | State |



NAD 1927 StatePlane
 New Mexico East FIPS 3001
 Projection: Transverse Mercator
 False Easting: 500000.000000
 False Northing: 0.000000
 Central Meridian: -104.333333
 Scale Factor: 0.999909
 Latitude Of Origin: 31.000000
 Linear Unit: Foot US

GCS North American 1927
 Datum: D North American 1927

Drawn By: Nicholas Tallant

Checked by:

Date: 10/9/2014

Sheet
 1 of 1

Exhibit #2

APACHE CORPORATION

WEST BLINEBRY DRINKARD UNIT #195

2585' FNL & 1965' FWL

SEC: 9 T21S R37E

1 MILE RADIUS

0

1,616

3,232

FEET

POSTED WELL DATA

Well Name

Well Number

WELL SYMBOLS

Abandoned Oil and Gas Well

Dry Hole, With Show of Gas

Dry Hole, With Show of Oil

Dry Hole

Gas Well

Active Injection

Key Injection well

Location

New Location

Oil & Gas Well

Oil Well

P&A'd Gas Well

Plugged and Abandoned

Active Producer

PERMIT

Pilot Hole

P&A Oil

December 11, 2014

