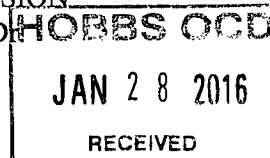


District I
1625 N. French Dr., Hobbs, NM 88240
Phone: (575) 393-6161 Fax: (575) 393-0720
District II
811 S. First St., Artesia, NM 88210
Phone: (575) 748-1283 Fax: (575) 748-9720
District III
1000 Rio Brazos Road, Aztec, NM 87410
Phone: (505) 334-6178 Fax: (505) 334-6170
District IV
1220 S. St. Francis Dr., Santa Fe, NM 87505
Phone: (505) 476-3460 Fax: (505) 476-3462

State of New Mexico
Energy, Minerals & Natural Resources Department
OIL CONSERVATION DIVISION
1220 South St. Francis Dr.
Santa Fe, NM 87505

Form C-102
Revised August 1, 2011
Submit one copy to appropriate
District Office



☐ AMENDED REPORT

WELL LOCATION AND ACREAGE DEDICATION PLAT

¹ API Number 30-025-43041		² Pool Code 22900		³ Pool Name Kunice, Mi - Tu - Dr, N	
⁴ Property Code 22503		⁵ Property Name NORTHEAST DRINKARD UNIT			⁶ Well Number 354D
⁷ GRID NO. 873		⁸ Operator Name APACHE CORPORATION			⁹ Elevation 3453'

¹⁰ Surface Location

UL or lot no.	Section	Township	Range	Lot Idn	Feet from the	North/South line	Feet From the	East/West line	County
J	3	21S	37E		1350	SOUTH	1635	EAST	LEA

¹¹ Bottom Hole Location If Different From Surface

UL or lot no.	Section	Township	Range	Lot Idn	Feet from the	North/South line	Feet from the	East/West line	County
0	3	21S	37E		1280	SOUTH	1800	EAST	LEA

¹² Dedicated Acres 80	¹³ Joint or Infill	¹⁴ Consolidation Code	¹⁵ Order No.
--	-------------------------------	----------------------------------	-------------------------

No allowable will be assigned to this completion until all interest have been consolidated or a non-standard unit has been approved by the division.

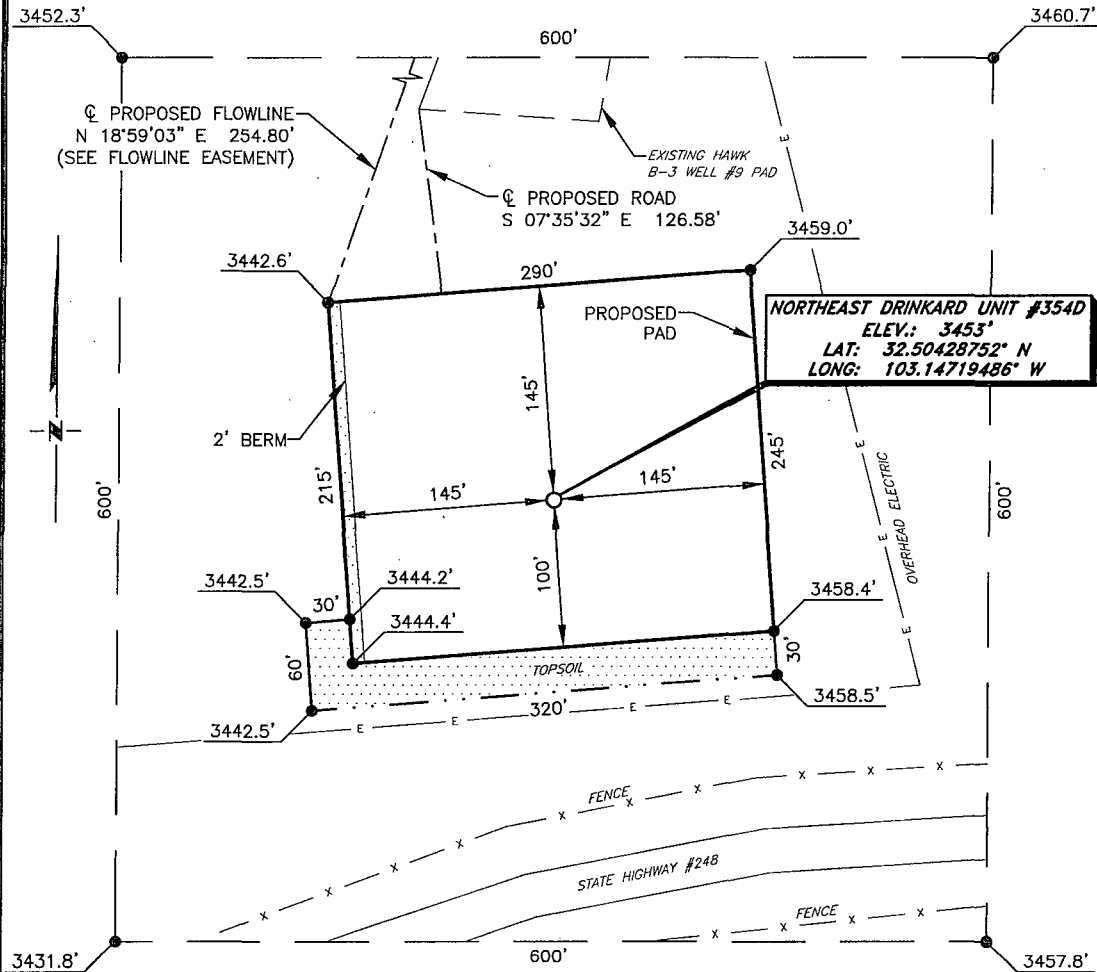
<p>16</p>	<p>17 OPERATOR CERTIFICATION I hereby certify that the information contained herein is true and complete to the best of my knowledge and belief, and that this organization either owns a working interest or unleased mineral interest in the land including the proposed bottom hole location or has a right to drill this well at this location pursuant to a contract with an owner of such a mineral or working interest, or to a voluntary pooling agreement or a compulsory pooling order heretofore entered by the division.</p> <p>Signature: <u>Sorina H. Flores</u> Date: <u>4/30/15</u> Printed Name: <u>Sorina H. Flores</u> E-mail Address: <u>Sorina.Flores@apachecorp.com</u></p>
	<p>18 SURVEYOR CERTIFICATION I hereby certify that the well location shown on this plat was plotted from field notes of actual surveys made by me or under my supervision, and that the same is true and correct to the best of my belief.</p> <p>Date of Survey: <u>4-22-2015</u> Signature and Seal of Professional Surveyor: <u>Robert M. Howett</u></p> <p>19680 Certificate Number</p>
	<p>GEODETIC DATA NAD 27 GRID - NM EAST</p> <p>SURFACE LOCATION N 549206.8 - E 865681.1 LAT: 32.50428752° N LONG: 103.14719486° W</p> <p>BOTTOM HOLE LOCATION N 549134.7 - E 865517.0</p> <p>CORNER DATA NAD 27 GRID - NM EAST</p> <p>A: FOUND BRASS CAP "1911" N 547810.3 - E 862065.7 B: FOUND BRASS CAP "1911" N 555657.7 - E 861970.9 C: FOUND BRASS CAP "1911" N 555715.8 - E 867239.4 D: FOUND BRASS CAP "1911" N 547877.8 - E 867331.9</p> <p>DETAIL "A"</p>
	<p>19</p>

RRC - Firm No.: TX 10193838 NM 4655451 - Job No.: LS1504182

FEB 01 2016

APACHE CORPORATION

NORTHEAST DRINKARD UNIT #354D
(1350' FSL & 1635' FEL)
SECTION 3, T21S, R37E
N. M. P. M., LEA COUNTY, NEW MEXICO



NORTHEAST DRINKARD UNIT #354D
ELEV.: 3453'
LAT: 32.50428752° N
LONG: 103.14719486° W

DIRECTIONS TO LOCATION

From the intersection of N.M. Hwy. 18 and N.M. Hwy. 248,
Go Southwest N.M. Hwy. 248 approx. 1.7 miles to a lease road on the right;

Turn right and go North approx. 0.2 miles to a lease road on the right;

Turn right and go approx. 0.1 miles to the existing Hawk B-3 Well #9, location
is 325 feet South of existing well.

SCALE: 1" = 100'

0 50 100

BEARINGS ARE
NAD 27 GRID - NM EAST
DISTANCES ARE GROUND

Firm No.: TX 10193838 NM 4655451

Copyright 2014 - All Rights Reserved

1	ACCESS ROAD	4-27
NO.	REVISION	DATE
JOB NO.:	LS1504182	
DWG. NO.:	1504182PAD	

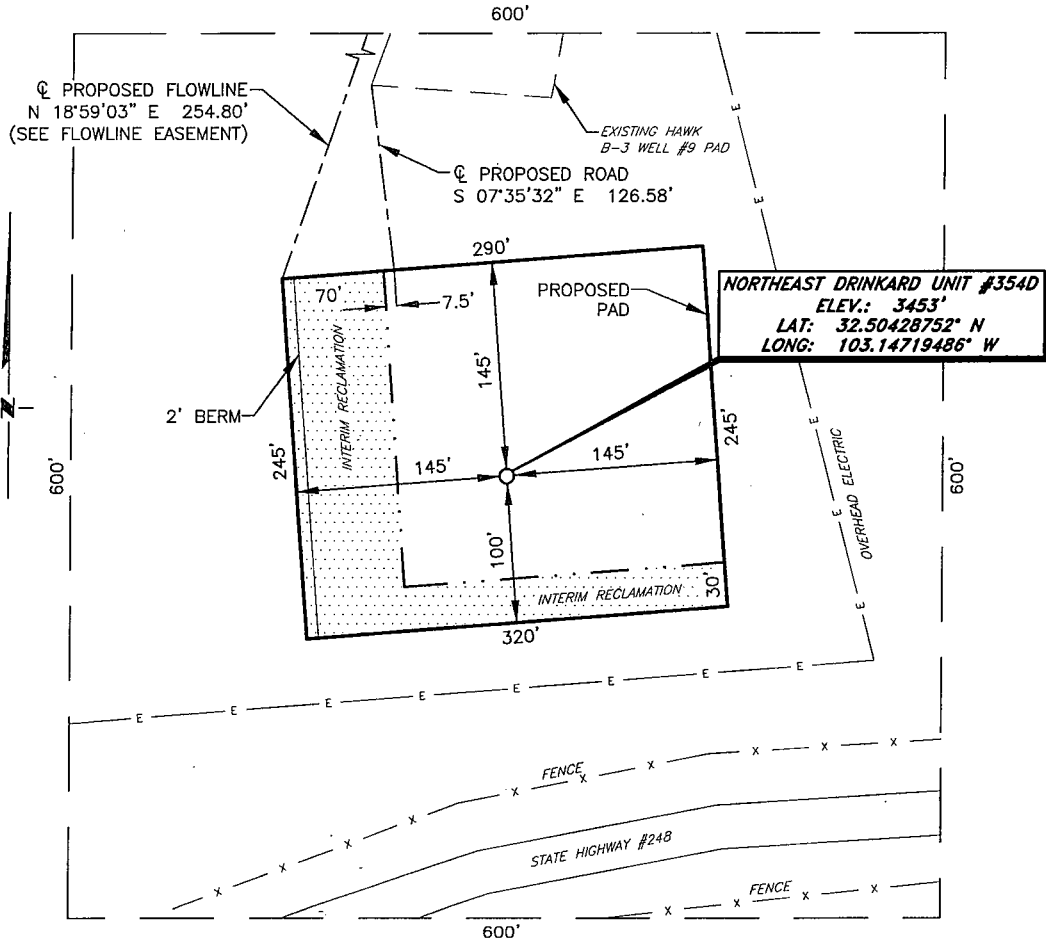
RRC

308 W. BROADWAY ST., HOBBS, NM 88240 (575) 964-8200

SCALE: 1" = 100'
DATE: 4-22-2015
SURVEYED BY: GB
DRAWN BY: CMJ
APPROVED BY: RMH
SHEET: 1 OF 1

APACHE CORPORATION
INTERIM RECLAMATION
NORTHEAST DRINKARD UNIT #354D
(1350' FSL & 1635' FEL)
SECTION 3, T21S, R37E
N. M. P. M., LEA COUNTY, NEW MEXICO

Exhibit
#6



DIRECTIONS TO LOCATION

From the intersection of N.M. Hwy. 18 and N.M. Hwy. 248,
Go Southwest N.M. Hwy. 248 approx. 1.7 miles to a lease road on the right;
Turn right and go North approx. 0.2 miles to a lease road on the right;
Turn right and go approx. 0.1 miles to the existing Hawk B-3 Well #9, location
is 325 feet South of existing well.

SCALE: 1" = 100'
0 50 100
BEARINGS ARE
NAD 27 GRID - NM EAST
DISTANCES ARE GROUND

Firm No.: TX 10193838 NM 4655451

Copyright 2014 - All Rights Reserved

1	ACCESS ROAD	4-27
NO.	REVISION	DATE
JOB NO.:	LS1504182	
DWG. NO.:	1504182REC	

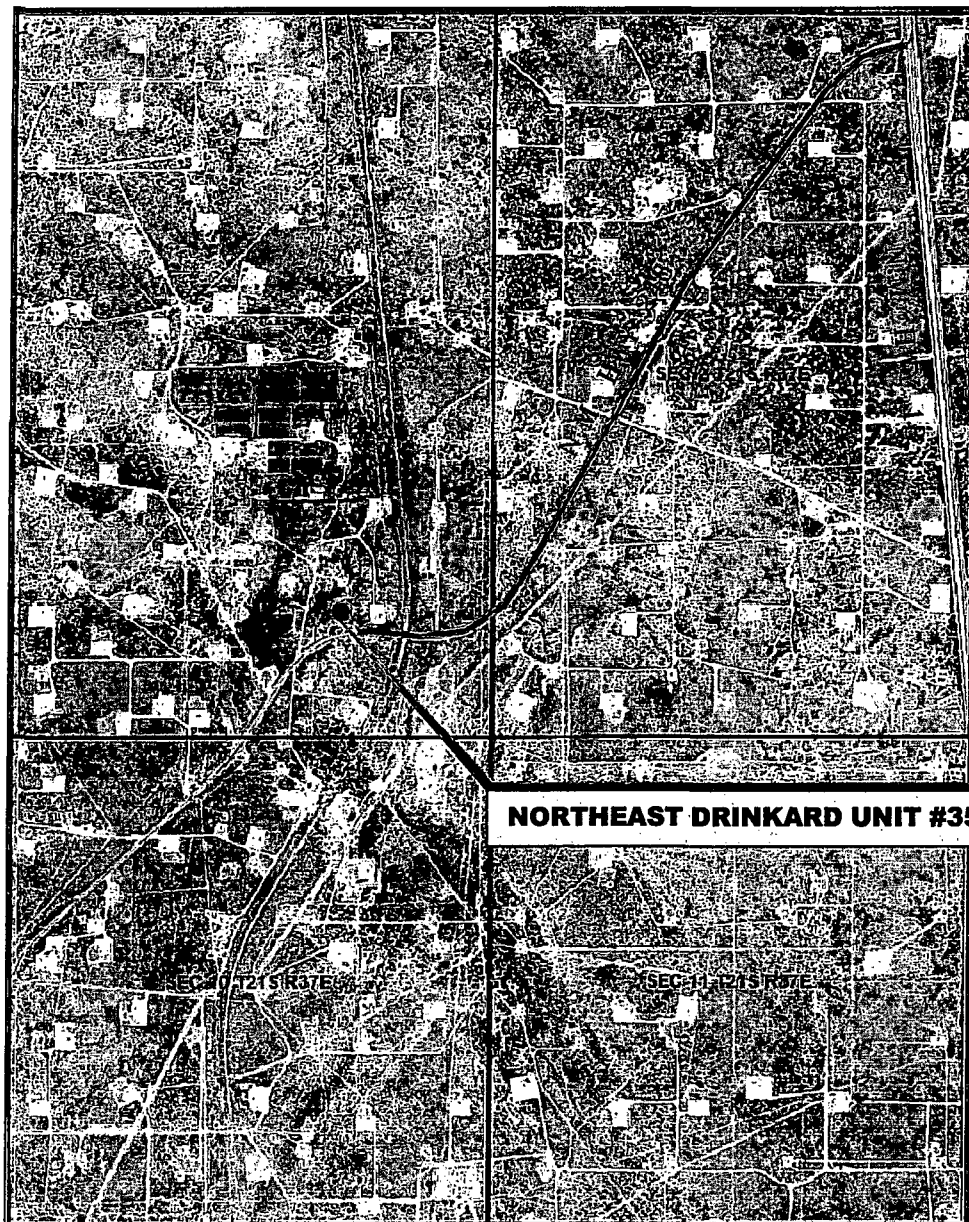
RRC

308 W. BROADWAY ST., HOBBS, NM 88240 (575) 964-8200

SCALE: 1" = 100'
DATE: 4-22-2015
SURVEYED BY: GB
DRAWN BY: CMJ
APPROVED BY: RMH
SHEET: 1 OF 1

Exhibit #1

VICINITY MAP



NORTHEAST DRINKARD UNIT #354D

*SECTION 3, TWP. 21 SOUTH, RGE. 37 EAST,
N. M. P. M., LEA CO., NEW MEXICO*

OPERATOR: Apache Corporation
LEASE: Northeast Drinkard Unit
WELL NO.: 354D

LOCATION: 1350' FSL & 1635' FEL
ELEVATION: 3453'

Firm No.: TX 10193838 NM 4655451

Copyright 2015 - All Rights Reserved

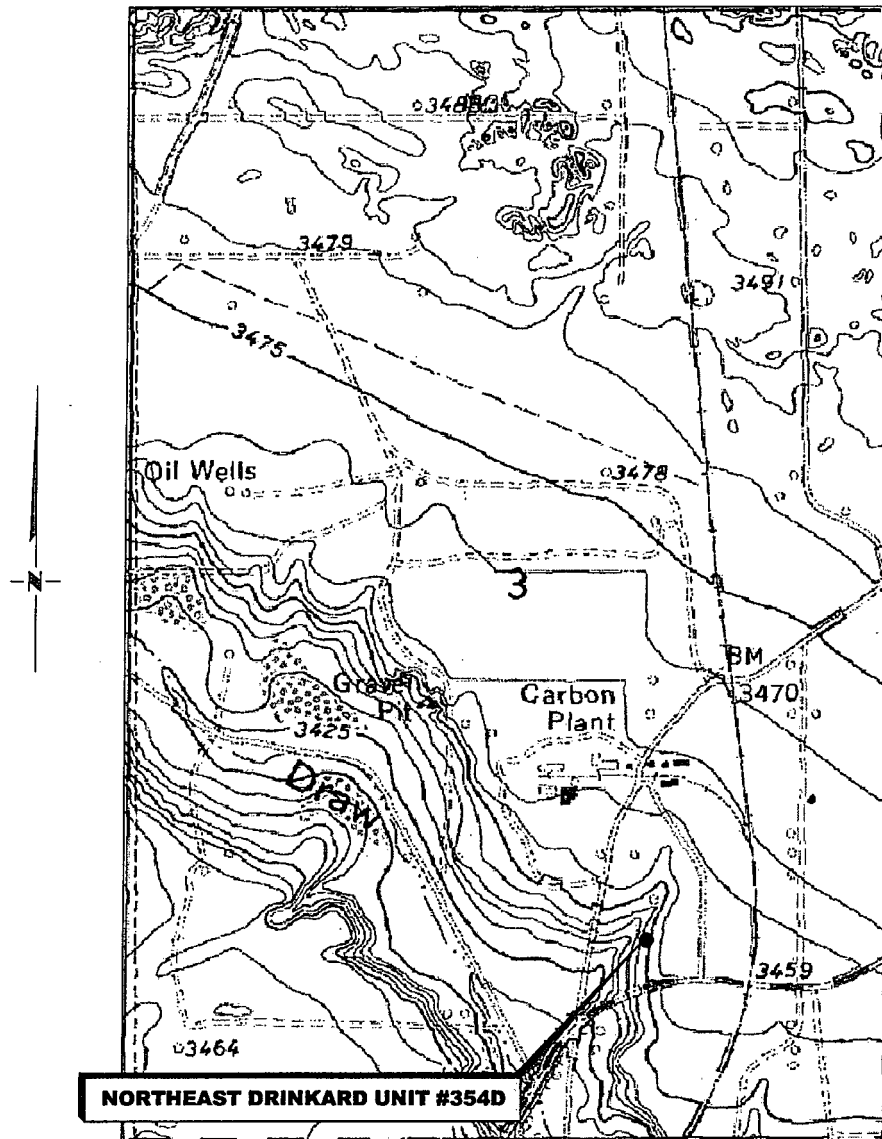
NO.	REVISION	DATE
JOB NO.:	LS1504182	
DWG. NO.:	1504182VM	

RRC

308 W. BROADWAY ST., HOBBS, NM 88240 (575) 964-8200

SCALE: NTS
DATE: 4-22-2015
SURVEYED BY: GB
DRAWN BY: CMJ
APPROVED BY: RMH
SHEET : 1 OF 1

LOCATION VERIFICATION MAP



SECTION 3, TWP. 21 SOUTH, RGE. 37 EAST,
N. M. P. M., LEA CO., NEW MEXICO

OPERATOR: Apache Corporation
LEASE: Northeast Drinkard Unit
WELL NO.: 354D
ELEVATION: 3453'

LOCATION: 1350' FSL & 1635' FEL
CONTOUR INTERVAL: 5'
USGS TOPO. SOURCE MAP:
Hobbs SW, NM (1979)

Firm No.: TX 10193838 NM 4655451

Copyright 2014 - All Rights Reserved

NO.	REVISION	DATE

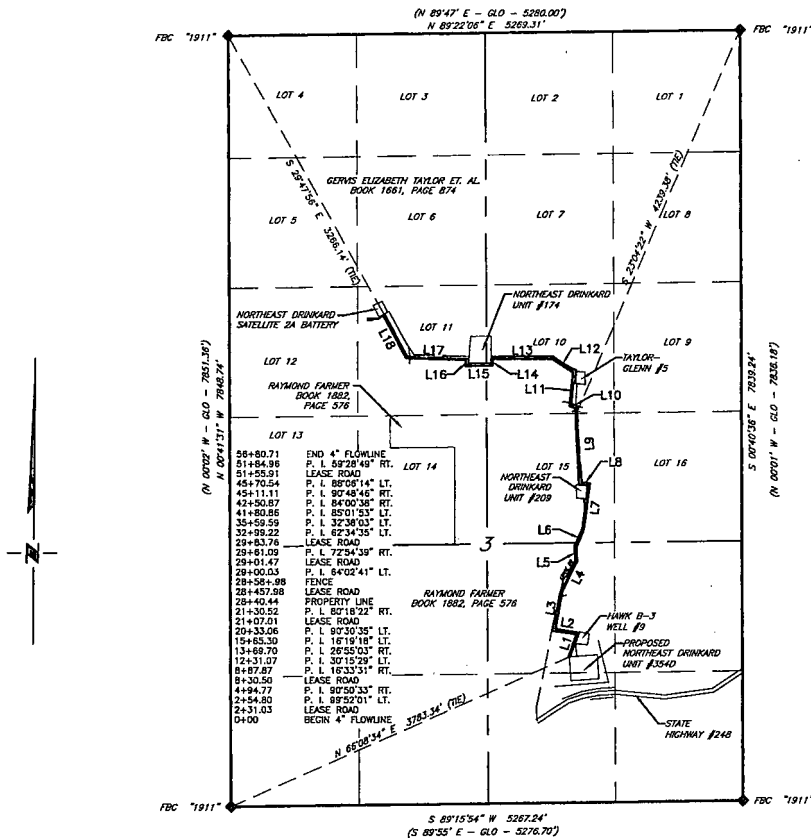
RRC

308 W. BROADWAY ST., HOBBS, NM 88240 (575) 964-8200

SCALE: 1" = 1000'
DATE: 4-22-2015
SURVEYED BY: GB
DRAWN BY: CMJ
APPROVED BY: RMH
SHEET : 1 OF 1

APACHE CORPORATION
OVERALL OF PROPOSED 4" FLOWLINE FROM THE
NORTHEAST DRINKARD UNIT #354D
TO THE NORTHEAST DRINKARD SATELLITE 2A BATTERY
SECTION 3, T21S, R37E,
N. M. P. M., LEA CO., NEW MEXICO

Exhibit
#1A



LINE TABLE		
LINE	BEARING	LENGTH
L1	N 18°59'03" E	254.80'
L2	N 80°52'58" W	239.97'
L3	N 09°57'35" E	393.61'
L4	N 26°31'05" E	343.20'
L5	N 03°44'24" W	138.63'
L6	N 23°10'30" E	195.60'
L7	N 05°51'21" E	467.76'
L8	N 83°39'14" W	97.46'
L9	N 03°20'52" W	769.51'
L10	N 67°23'34" W	61.05'
L11	N 05°31'05" E	338.13'
L12	N 57°03'30" W	260.37'
L13	N 89°41'33" W	621.27'
L14	S 05°16'34" W	70.01'
L15	S 89°17'12" W	260.24'
L16	N 00°05'58" E	59.43'
L17	N 88°00'16" W	614.42'
L18	N 28°31'27" W	495.75'

Total: 5681.22'

BEARINGS ARE NAD 27 GRID
 NM EAST
 DISTANCES ARE GROUND
 SCALE: 1" = 1500'

0 750' 1500'

LEGEND

- () RECORD DATA - GLO
- ◆ FOUND MONUMENT AS NOTED
- PROPOSED 4" FLOWLINE

Firm No.: TX 10193838 NM 4655451

Copyright 2014 - All Rights Reserved

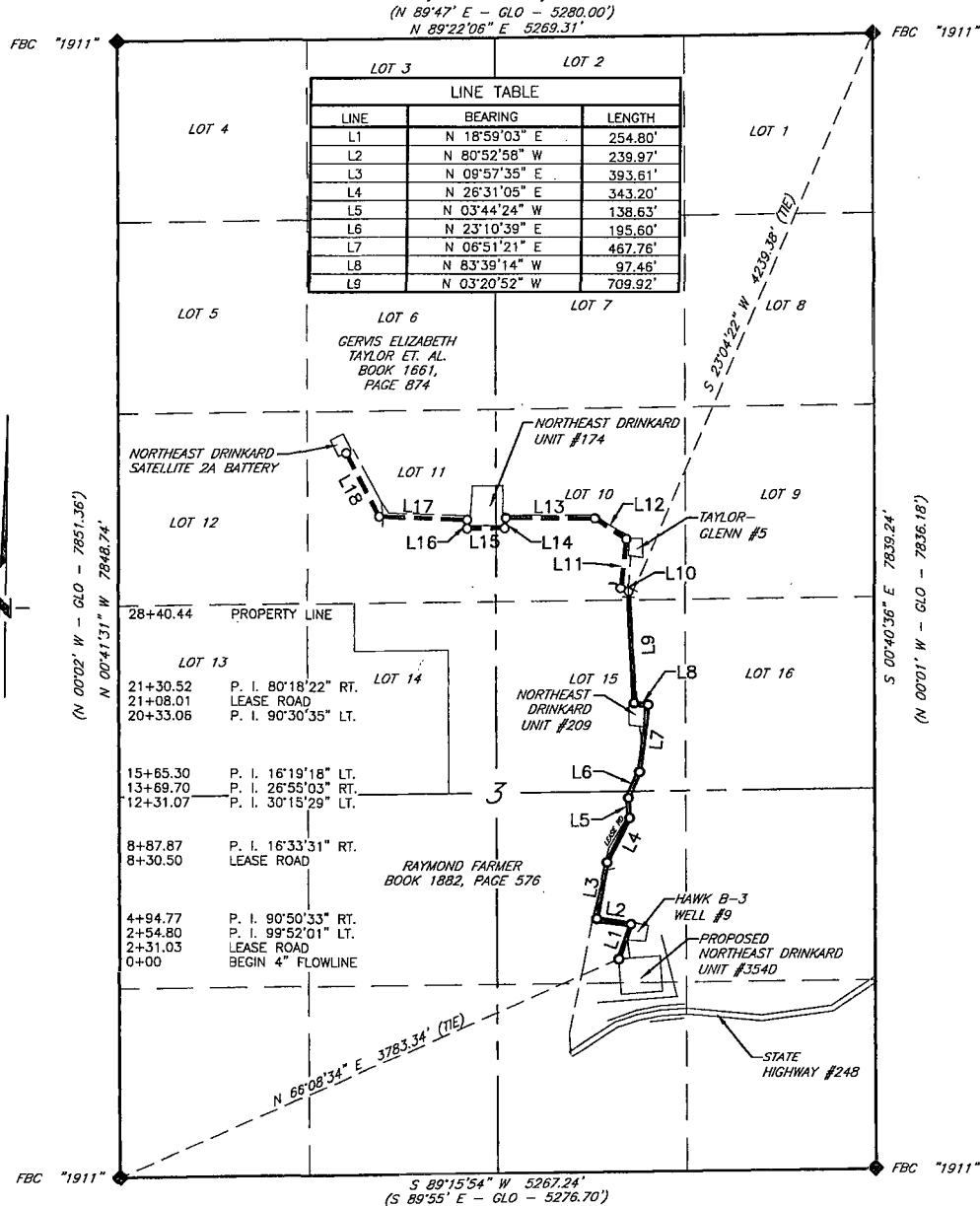
NO.	REVISION	DATE
JOB NO.:	LS1504182	
DWG. NO.:	1504182-1	

RRC

308 W. BROADWAY ST., HOBBS, NM 88240 (575) 964-8200

SCALE: 1" = 1500'
DATE: 4-22-2015
SURVEYED BY: GB
DRAWN BY: CMJ
APPROVED BY: RMH
SHEET: 1 OF 5

APACHE CORPORATION
PROPOSED 4" FLOWLINE FROM THE NORTHEAST DRINKARD UNIT #354D
TO THE NORTHEAST DRINKARD SATELLITE 2A BATTERY
SECTION 3, T21S, R37E,
N. M. P. M., LEA CO., NEW MEXICO



SCALE: 1" = 1000'
 0 500' 1000'

BEARINGS ARE GRID NAD 27
 NM EAST
 DISTANCES ARE HORIZ. GROUND.

LEGEND
 () RECORD DATA - GLO
 ♦ FOUND MONUMENT AS NOTED
 — PROPOSED 4" FLOWLINE

I, R. M. Howett, a N. M. Professional Surveyor, hereby certify that I prepared this plat from an actual survey made on the ground under my direct supervision, said survey and plot meet the Min. Stds. for Land Surveying in the State of N. M. and are true and correct to the best of my knowledge and belief.

Robert M. Howett

Robert M. Howett NM PS 19680

Firm No.: TX 10193838 NM 4655451

Copyright 2014 - All Rights Reserved



NO.	REVISION	DATE
JOB NO.:	LS1504182	
DWG. NO.:	1504182-2	

RRC

308 W. BROADWAY ST., HOBBS, NM 88240 (575) 964-8200

SCALE: 1" = 1000'
 DATE: 4-22-2015
 SURVEYED BY: GB
 DRAWN BY: CMJ
 APPROVED BY: RMH
 SHEET : 2 OF 5

APACHE CORPORATION
PROPOSED 4" FLOWLINE FROM THE NORTHEAST DRINKARD UNIT #354D
TO THE NORTHEAST DRINKARD SATELLITE 2A BATTERY
SECTION 3, T21S, R37E,
N. M. P. M., LEA CO., NEW MEXICO

DESCRIPTION

A strip of land 30 feet wide, being 2,840.44 feet or 172.148 rods in length, lying in Section 3, Township 21 South, Range 37 East, N. M. P. M., Lea County, New Mexico, being 15 feet left and 15 feet right of the following described survey of a centerline across the lands of Raymond Farmer, according to a deed filed for record in Book 1882, Page 576, of the Deed Records of Lea County, New Mexico:

BEGINNING at Engr. Sta. 0+00, a point in the Southeast quarter of Section 6, which bears N 66°08'34" E, 3,783.34 feet from a brass cap, stamped "1911", found for the Southwest corner of Section 3;

Thence N 18°59'03" E, 254.80 feet, to Engr. Sta. 2+54.80, a P. I. of 99°52'01" left;

Thence N 80°52'58" W, 239.97 feet, to Engr. Sta. 4+94.77, a P. I. of 90°50'33" right;

Thence N 09°57'35" E, 393.61 feet, to Engr. Sta. 8+87.87, a P. I. of 16°33'31" right;

Thence N 26°31'05" E, 343.20 feet, to Engr. Sta. 12+31.07, a P. I. of 30°15'29" left;

Thence N 03°44'24" W, 138.63 feet, to Engr. Sta. 13+69.70, a P. I. of 26°55'03" right;

Thence N 23°10'39" E, 195.60 feet, to Engr. Sta. 15+65.30, a P. I. of 16°19'18" left;

Thence N 06°51'21" E, 467.76 feet, to Engr. Sta. 20+33.06, a P. I. of 90°30'35" left;

Thence N 83°39'14" W, 97.46 feet, to Engr. Sta. 21+30.52, a P. I. of 80°18'22" right;

Thence N 03°20'52" W, 709.92 feet, to Engr. Sta. 28+40.44, a point on the North line of Lot 15, which bears S 23°04'22" W, 4,239.38 feet from a brass cap, stamped "1911", found for the Northeast corner of Section 3.

Said strip of land contains 1.956 acres, more or less and is allocated by forties as follows:

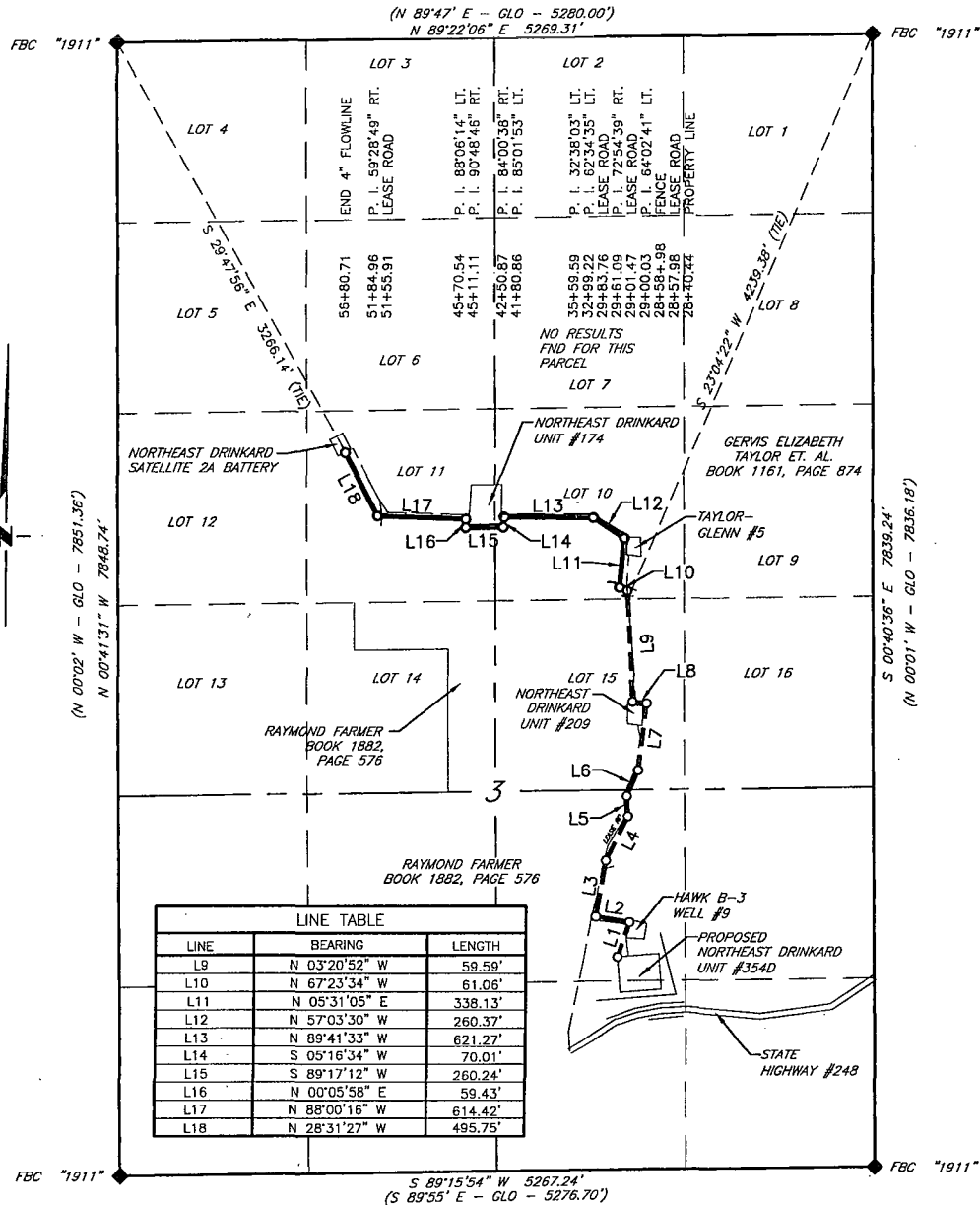
NW 1/4 SE 1/4	85.896 Rods	0.976 Acres
LOT 15	86.252 Rods	0.980 Acres

Firm No.: TX 10193838 NM 4655451

Copyright 2014 - All Rights Reserved

<div style="font-size: 2em; font-weight: bold; margin: 0;">RRC</div> <div style="font-size: 0.8em; margin-top: 5px;">308 W. BROADWAY ST., HOBBS, NM 88240 (575) 964-8200</div>			SCALE: 1" = 1000'
			DATE: 4-22-2015
			SURVEYED BY: GB
			DRAWN BY: CMJ
NO.	REVISION	DATE	APPROVED BY: RMH
JOB NO.: LS1504182			SHEET : 3 OF 5
DWG. NO.: 1504182-3			

APACHE CORPORATION
PROPOSED 4" FLOWLINE FROM THE NORTHEAST DRINKARD UNIT #354D
TO THE NORTHEAST DRINKARD SATELLITE 2A BATTERY
SECTION 3, T21S, R37E,
N. M. P. M., LEA CO., NEW MEXICO



LINE TABLE		
LINE	BEARING	LENGTH
L9	N 03°20'52" W	59.59'
L10	N 67°23'34" W	61.06'
L11	N 05°31'05" E	338.13'
L12	N 57°03'30" W	260.37'
L13	N 89°41'33" W	621.27'
L14	S 05°16'34" W	70.01'
L15	S 89°17'12" W	260.24'
L16	N 00°05'58" E	59.43'
L17	N 88°00'16" W	614.42'
L18	N 28°31'27" W	495.75'

SCALE: 1" = 1000'
 0 500' 1000'

BEARINGS ARE GRID NAD 27
 NM EAST
 DISTANCES ARE HORIZ. GROUND.

LEGEND
 () RECORD DATA - GLO
 ♦ FOUND MONUMENT AS NOTED
 — PROPOSED 4" FLOWLINE

I, R. M. Howett, a N. M. Professional Surveyor, hereby certify that I prepared this plat from an actual survey made on the ground under my direct supervision, said survey and plat meet the Min. Stds. for Land Surveying in the State of N. M. and are true and correct to the best of my knowledge and belief.

Robert M. Howett
 Robert M. Howett NM PS 19680



Firm No.: TX 10193838 NM 4655451

Copyright 2014 - All Rights Reserved

NO.	REVISION	DATE
JOB NO.:	LS1504182	
DWG. NO.:	1504182-4	

RRC

308 W. BROADWAY ST., HOBBS, NM 88240 (575) 964-8200

SCALE: 1" = 1000'
 DATE: 4-22-2015
 SURVEYED BY: GB
 DRAWN BY: CMJ
 APPROVED BY: RMH
 SHEET : 4 OF 5

APACHE CORPORATION
PROPOSED 4" FLOWLINE FROM THE NORTHEAST DRINKARD UNIT #354D
TO THE NORTHEAST DRINKARD SATELLITE 2A BATTERY
SECTION 3, T21S, R37E,
N. M. P. M., LEA CO., NEW MEXICO

DESCRIPTION

A strip of land 30 feet wide, being 2,840.27 feet or 172.138 rods in length, lying in Section 3, Township 21 South, Range 37 East, N. M. P. M., Lea County, New Mexico, being 15 feet left and 15 feet right of the following described survey of a centerline across the lands of Gervis Elizabeth Taylor, ET AL., according to a deed filed for record in Book 1661, Page 874, of the Deed Records of Lea County, New Mexico:

BEGINNING at Engr. Sta. 28+40.44, a point on the South Line of Lot 10, which bears S 23°04'22" W, 4,239.38 feet from a brass cap, stamped "1911", found for the Northeast corner of Section 3;

Thence N 03°20'52" W, 59.59 feet, to Engr. Sta. 29+00.03, a P. I. of 64°02'41" left;

Thence N 67°23'34" W, 61.06 feet, to Engr. Sta. 29+61.09, a P. I. of 72°54'39" right;

Thence N 05°31'05" E, 338.13 feet, to Engr. Sta. 32+99.22, a P. I. of 62°34'35" left;

Thence N 57°03'30" W, 260.37 feet, to Engr. Sta. 35+59.59, a P. I. of 32°38'03" left;

Thence N 89°41'33" W, 621.27 feet, to Engr. Sta. 41+80.86, a P. I. of 85°01'53" left;

Thence S 05°16'34" W, 70.01 feet, to Engr. Sta. 42+50.87, a P. I. of 84°00'38" right;

Thence S 89°17'12" W, 260.24 feet, to Engr. Sta. 45+11.11, a P. I. of 90°48'46" right;

Thence N 00°05'58" E, 59.43 feet, to Engr. Sta. 45+70.54, a P. I. of 88°06'14" left;

Thence N 88°00'16" W, 614.42 feet, to Engr. Sta. 51+84.96, a P. I. of 59°28'49" right;


Thence N 28°31'27" W, 495.75 feet, to Engr. Sta. 56+80.71, the End of Survey, which bears S 29°47'56" E, 3,266.14 feet from a brass cap, stamped "1911", found for the Northwest corner of Section 3.

Said strip of land contains 1.956 acres, more or less and is allocated by forties as follows:

LOT 10	89.069	Rods	1.012	Acres
LOT 11	83.069	Rods	0.944	Acres

Firm No.: TX 10193838 NM 4655451

Copyright 2014 - All Rights Reserved

<div style="text-align: center;">  <p>RRC</p> </div>			SCALE: 1" = 1000'
			DATE: 4-22-2015
			SURVEYED BY: GB
			DRAWN BY: CMJ
NO.	REVISION	DATE	APPROVED BY: RMH
JOB NO.: LS1504182			SHEET : 5 OF 5
DWG. NO.: 1504182-5			

308 W. BROADWAY ST., HOBBS, NM 88240 (575) 964-8200

APACHE CORPORATION

NORTHEAST DRINKARD UNIT #354

SHL: 1350' FSL & 1635' FEL

BHL: 1280' FSL & 1800' FEL

SEC: 3 T21S R37E



POSTED WELL DATA

Well Number

- WELL SYMBOLS**
- ◊ BTd LOCATION
 - Dry Hole
 - Gas Well
 - ◊ GRBG LOCATION
 - Injection Well
 - Location Only
 - Non Apache
 - Large Square
 - Oil Well
 - ▲ Service Well
 - Plugged and Abandoned
 - Active Producer
 - Temporarily Abandoned Oil Well
 - Plugged Injection
 - Active Injection

February 21, 2013

1 Mile Radius
Exhibit #2

