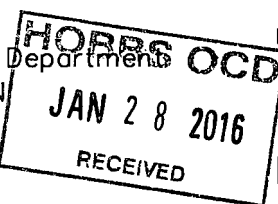


District I
1625 N. French Dr., Hobbs, NM 88240
Phone: (575) 393-6161 Fax: (575) 393-0720
District II
811 S. First St., Artesia, NM 88210
Phone: (575) 748-1283 Fax: (575) 748-9720
District III
1000 Rio Brazos Road, Aztec, NM 87410
Phone: (505) 334-6178 Fax: (505) 334-6170
District IV
1220 S. St. Francis Dr., Santa Fe, NM 87505
Phone: (505) 476-3460 Fax: (505) 476-3462

State of New Mexico
Energy, Minerals & Natural Resources Department
OIL CONSERVATION DIVISION
1220 South St. Francis Dr.
Santa Fe, NM 87505



Form C-102
Revised August 1, 2011
Submit one copy to
appropriate
District Office

☐ AMENDED REPORT

WELL LOCATION AND ACREAGE DEDICATION PLAT

1 API Number 30-025-43045	2 Pool Code 22900	3 Pool Name Eunice, Bli-Tu-Dr, North
4 Property Code 37346	5 Property Name WEST BLINEBRY DRINKARD UNIT	
6 Well Number #239D	9 Elevation 3460.63	
7 OGRID No. 873	8 Operator Name APACHE CORPORATION	

10 Surface Location

UL or lot no.	Section	Township	Range	Lot Idn	Feet from the	North/South line	Feet from the	East/West line	County
9 I	9	21 S	37 E		2,335	SOUTH	215	EAST	LEA

11 Bottom Hole Location If Different From Surface

UL or lot no.	Section	Township	Range	Lot Idn	Feet from the	North/South line	Feet from the	East/West line	County
9 I	9	21 S	37 E		2,450	SOUTH	340	EAST	LEA

No allowable will be assigned to this completion until all interests have been consolidated or a non-standard unit has been approved by the division.

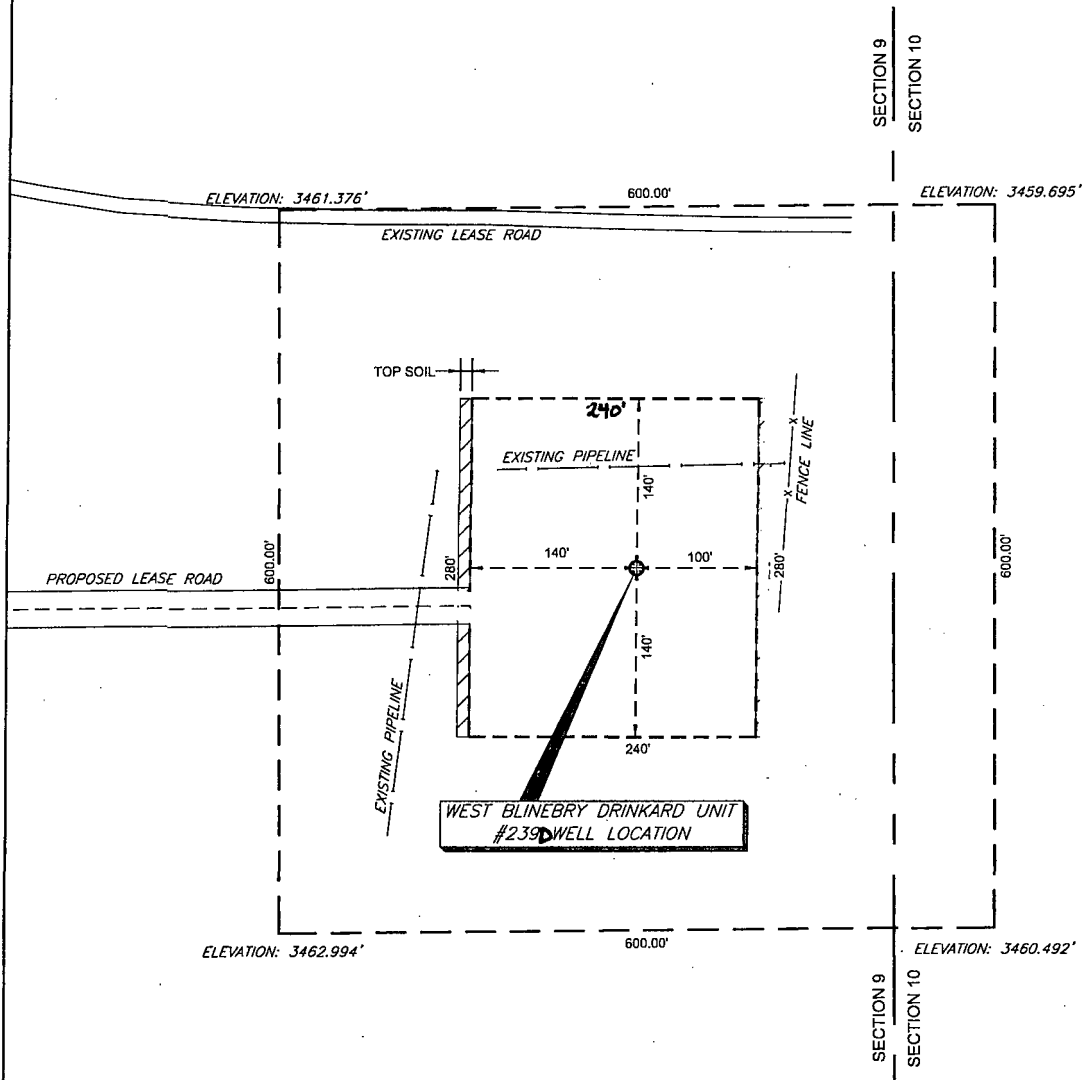
SECTION 9, TOWNSHIP 21 SOUTH, RANGE 37 EAST P.M.

<p>FOUND 3 INCH IRON PIPE, MARKED "U.S. GENERAL LAND OFFICE"</p> <p>LAT: 32.500425 N LONG: -103.175936 W NAD83 E: 856835.088 (N.A.D. 83)</p> <p>LAT: 32.500547 N LONG: -103.176407 W NAD83 E: 857764.692 NAD83 E: 858019.092 (N.A.D. 83)</p>		<p>FOUND 3 INCH IRON PIPE, MARKED "U.S. GENERAL LAND OFFICE"</p> <p>LAT: 32.500407 N LONG: -103.158794 W NAD83 E: 847755.305 NAD83 E: 862120.424 (N.A.D. 27)</p> <p>LAT: 32.500528 N LONG: -103.159265 W NAD83 E: 847815.516 NAD83 E: 903304.383 (N.A.D. 83)</p>		<p>17 OPERATOR CERTIFICATION</p> <p>I hereby certify that the information contained herein is true and complete to the best of my knowledge and belief, and that this organization either owns a working interest or unleased mineral interest in the land including the proposed bottom hole location or has a right to drill this well at this location pursuant to a contract with an owner of such a mineral or working interest, or to a voluntary pooling agreement or a compulsory pooling order heretofore entered by the division.</p> <p><i>Sorina R Flores</i> 12/8/14 Signature Date <i>Sorina R Flores</i> Printed Name <i>sorina.flores@apachecorp.com</i> E-mail Address</p>			
<p>5 6</p> <p>12 11</p> <p>13 14</p>		<p>3 2</p> <p>6 7</p> <p>11 10</p> <p>14 15</p>		<p>2 1</p> <p>7 8</p> <p>10 9</p> <p>15 18</p>			
<p>SURFACE HOLE TO BOTTOM HOLE LOCATION (DEVIATION)</p> <p>LINE BEARING DISTANCE L1 N 47° 34' 33" W 170.09'</p>		<p>SURFACE LOCATION</p> <p>DD LAT: 32.492307 N DD LONG: -103.159494 W DMS LAT: 32°29'32.304" N DMS LONG: 103°09'34.177" W NAD83 E: 844805.870 (N.A.D. 27)</p> <p>DD LAT: 32.478837 N DD LONG: -103.160173 W DMS LAT: 32°28'43.815" N DMS LONG: 103°09'36.624" W NAD83 E: 835920.831 NAD83 E: 903111.195 (N.A.D. 83)</p>		<p>BOTTOM HOLE LOCATION</p> <p>DD LAT: 32.492623 N DD LONG: -103.159898 W DMS LAT: 32°29'33.445" N DMS LONG: 103°09'35.636" W NAD83 E: 844819.843 NAD83 E: 861811.010 (N.A.D. 27)</p> <p>DD LAT: 32.492744 N DD LONG: -103.160370 W DMS LAT: 32°29'33.880" N DMS LONG: 103°09'37.331" W NAD83 E: 844880.020 NAD83 E: 902995.052 (N.A.D. 83)</p>		<p>18 SURVEYOR CERTIFICATION</p> <p>I hereby certify that the well location shown on this plat was plotted from field notes of actual surveys made by me or under my supervision, and that the same is true and correct to the best of my belief.</p> <p>10-02-2014 Date of Survey Signature and Seal of Professional Surveyor <i>Jeffery E. Hudson</i> Certificate Number 20559</p>	

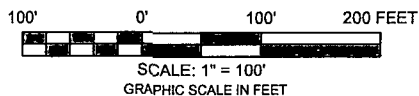
FEB 01 2016

LEA COUNTY, NEW MEXICO

SECTION NINE (9), TOWNSHIP TWENTY-ONE (21) SOUTH,
RANGE THIRTY-SEVEN (37) EAST OF THE PRINCIPAL MERIDIAN



COORDINATE TABLE				
WELL NAME	NORTHING (N.A.D. 27)	EASTING (N.A.D. 27)	NORTHING (N.A.D. 83)	EASTING (N.A.D. 83)
WBUD #239 SURFACE LOCATION & PENETRATION POINT	544805.87	861937.20	544866.04	903121.24
ELEVATION	LATITUDE (N.A.D. 27)	LONGITUDE (N.A.D. 27)	LATITUDE (N.A.D. 83)	LONGITUDE (N.A.D. 83)
3,460.63'	32.492307 N	-103.159494 W	32.492427 N	-103.159964 W



PREPARED FROM SURVEY
DATED: AUGUST 1, 2014

NOTES:

1.) BEARINGS & COORDINATES SHOWN HEREON ARE REFERENCED TO THE NEW MEXICO STATE PLANE COORDINATE SYSTEM, N.A.D. 27 & 83 DATUM (NEW MEXICO EAST ZONE) DERIVED FROM GPS OBSERVATIONS AND ARE BASED REFERENCE STATIONS - "E 148" - MALJAMAR NE (1985)

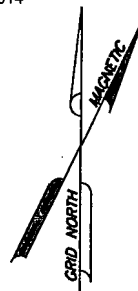
2.) LATITUDE & LONGITUDE ARE NAD 83 & 27 GEOGRAPHIC.

3.) THIS IS AN WELL PLAT AND DOES NOT REPRESENT A TRUE BOUNDARY SURVEY. THIS SURVEY IS BASED ON OWNERSHIP AND EASEMENT INFORMATION PROVIDED BY APACHE CORPORATION. SURVEYOR DID NOT ABSTRACT SUBJECT TRACT AND THERE MAY BE EASEMENTS OR OTHER ENCUMBRANCES THAT AFFECT THE SUBJECT TRACT THAT ARE NOT SHOWN HEREON.



TRANSGLOBAL
SERVICES LLC

8205 Camp Bowie West, Suite 204
Fort Worth, Texas 76116
(817) 386-0362 ~ Fax (817) 224-3377



THE WEST BLINEBRY DRINKARD UNIT #239 IS LOCATED
APPROXIMATELY 4 MILES NORTH-NORTHWEST OF
EUNICE, NEW MEXICO

Apache

Location of

WEST BLINEBRY DRINKARD UNIT #239D

Surface Location & Penetration Point: 2335' FSL & 215' FEL

Section 9, Township 21 South, Range 37 East of P.M.

Lea County, New Mexico

DRAWN BY: P.R.W.	DATE: 11-06-14	DWG. NO.	REV.
CHECKED BY:	DATE:	WBUD #239 WELL LOCATION	1
SCALE: 1" = 100'	APP.:	PAGE 1 OF 1	

SECTION NINE (9), TOWNSHIP TWENTY-ONE (21) SOUTH,
RANGE THIRTY-SEVEN (37) EAST OF THE PRINCIPAL MERIDIAN

LINE	BEARING	DISTANCE
L1	S 89°26'30" W	1501.98'

EXISTING LEASE ROAD

LINEAR DISTANCE: 1501.98'
RODS: 91.03
SQUARE FEET: 52,555.87
ACREAGE: 1.21

L1

600.00'

EXISTING PIPELINE

TOP SOIL +

600.00'

#2

EXISTING

. 83

83)

E WE
ADDE

APPF

10

WE

S

P.R.

200'

SECTION 9

SECTION 10

SECTION 9
SECTION 10

COORDINATE TABLE				
WELL NAME	NORTHING (N.A.D. 27)	EASTING (N.A.D. 27)	NORTHING (N.A.D. 83)	EASTING (N.A.D. 83)
WB01 #239 SURFACE LOCATION & PENETRATION POINT	544805.87	861937.20	544866.04	903121.24
ELEVATION	LATITUDE (N.A.D. 27)	LONGITUDE (N.A.D. 27)	LATITUDE (N.A.D. 83)	LONGITUDE (N.A.D. 83)
3,460.63'	32.492307 N	-103.159494 W	32.492427 N	-103.159964 W

200' 0' 200' 400 FEET

SCALE: 1" = 200'
GRAPHIC SCALE IN FEET

PREPARED FROM SURVEY
DATED: AUGUST 1, 2014

NOTES:

1.) BEARINGS & COORDINATES SHOWN HEREON ARE REFERENCED TO THE NEW MEXICO STATE PLANE COORDINATE SYSTEM, N.A.D. 27 & 83 DATUM (NEW MEXICO EAST ZONE) DERIVED FROM GPS OBSERVATIONS AND ARE BASED REFERENCE STATIONS - "E 148" - MALAMAR NE (1985)

2.) LATITUDE & LONGITUDE ARE NAD 83 & 27 GEOGRAPHIC.

3.) THIS IS AN WELL PLAT AND DOES NOT REPRESENT A TRUE BOUNDARY SURVEY. THIS SURVEY IS BASED ON OWNERSHIP AND EASEMENT INFORMATION PROVIDED BY APACHE CORPORATION. SURVEYOR DID NOT ABSTRACT SUBJECT TRACT AND THERE MAY BE EASEMENTS OR OTHER ENCUMBRANCES THAT AFFECT THE SUBJECT TRACT THAT ARE NOT SHOWN HEREON.

THE WEST BLINEBRY DRINKARD UNIT #239 IS LOCATED
APPROXIMATELY 4 MILES NORTH-NORTHWEST OF
EUNICE, NEW MEXICO

Apache

Location of

WEST BLINEBRY DRINKARD UNIT #239 

Surface Location & Penetration Point: 2335' FSL & 215' FEL

Section 9, Township 21 South, Range 37 East of P.M.

Lea County, New Mexico



TRANSGLOBAL
SERVICES LLC

8205 Camp Bowie West, Suite 204
Fort Worth, Texas 76116
(817) 386-0362 ~ Fax (82) 224-3377

DRAWN BY: P.R.W.	DATE: 11-06-14	DWG. NO. WBDJ #239 WELL LOCATION
CHECKED BY:	DATE:	
SCALE: 1" = 200'	APP.:	

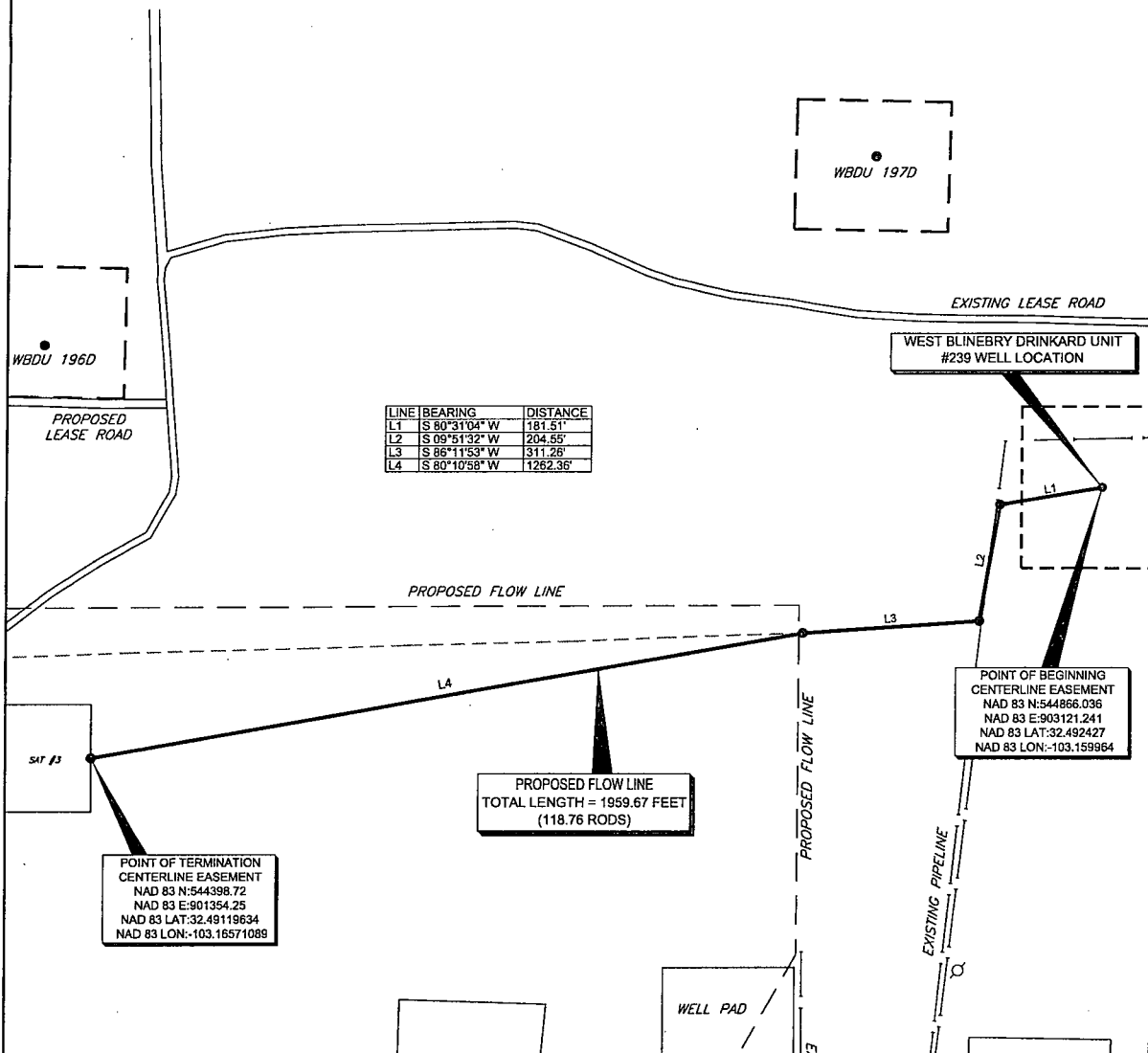
REV. 1

PAGE 1 OF 1

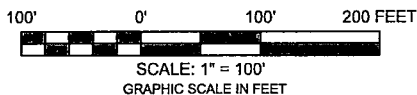
LEA COUNTY, NEW MEXICO

SECTION NINE (9), TOWNSHIP TWENTY-ONE (21) SOUTH,
RANGE THIRTY-SEVEN (37) EAST OF THE PRINCIPAL MERIDIAN

Exhibit # 1B



COORDINATE TABLE				
WELL NAME	NORTHING (N.A.D. 27)	EASTING (N.A.D. 27)	NORTHING (N.A.D. 83)	EASTING (N.A.D. 83)
WBDU #239 SURFACE LOCATION & PENETRATION POINT	544805.87	861937.20	544866.04	903121.24
ELEVATION	LATITUDE (N.A.D. 27)	LONGITUDE (N.A.D. 27)	LATITUDE (N.A.D. 83)	LONGITUDE (N.A.D. 83)
3,460.63'	32.492307 N	-103.159494 W	32.492427 N	-103.159964 W



PREPARED FROM SURVEY
DATED: AUGUST 1, 2014

NOTES:

1.) BEARINGS & COORDINATES SHOWN HEREON ARE REFERENCED TO THE NEW MEXICO STATE PLANE COORDINATE SYSTEM, N.A.D. 27 & 83 DATUM (NEW MEXICO EAST ZONE) DERIVED FROM GPS OBSERVATIONS AND ARE BASED REFERENCE STATIONS - "E 148" - MALJAMAR NE (1985)

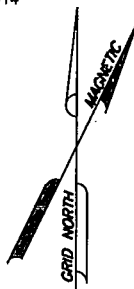
2.) LATITUDE & LONGITUDE ARE NAD 83 & 27 GEOGRAPHIC.

3.) THIS IS AN WELL PLAT AND DOES NOT REPRESENT A TRUE BOUNDARY SURVEY. THIS SURVEY IS BASED ON OWNERSHIP AND EASEMENT INFORMATION PROVIDED BY APACHE CORPORATION. SURVEYOR DID NOT ABSTRACT SUBJECT TRACT AND THERE MAY BE EASEMENTS OR OTHER ENCUMBRANCES THAT AFFECT THE SUBJECT TRACT THAT ARE NOT SHOWN HEREON.



TRANSGLOBAL
SERVICES LLC

8205 Camp Bowie West, Suite 204
Fort Worth, Texas 76116
(817) 386-0362 ~ Fax (817) 224-3377



THE WEST BLINEBRY DRINKARD UNIT #239 IS LOCATED
APPROXIMATELY 4 MILES NORTH-NORTHWEST OF
EUNICE, NEW MEXICO

Apache

Location of

PROPOSED FLOW LINE

Section 9, Township 21 South, Range 37 East of P.M.

Lea County, New Mexico

DRAWN BY: P.R.W.	DATE: 8-04-14	DWG. NO.	REV.
CHECKED BY:	DATE:	WBDU #239 WELL LOCATION	0
SCALE: 1" = 100'	APP.:	PAGE 1 OF 1	

EXHIBIT #1C

LEA COUNTY, NEW MEXICO

SECTION NINE (9), TOWNSHIP TWENTY-ONE (21) SOUTH,
RANGE THIRTY-SEVEN (37) EAST OF THE PRINCIPAL MERIDIAN

WBDU 2020

WBDU 1970

POINT OF BEGINNING
CENTERLINE EASEMENT
NAD 83 N:545359.532
NAD 83 E:902978.381
NAD 83 LAT:32.493788
NAD 83 LON:-103.160410

LINE	BEARING	DISTANCE
L1	S 00°38'31" W	290.44'
L2	S 00°41'04" W	198.29'

POINT OF TERMINATION
CENTERLINE EASEMENT
NAD 83 N:544870.840
NAD 83 E:902972.758
NAD 83 LAT:32.492445
NAD 83 LON:-103.160446

PROPOSED FLOW LINE

WEST BLINEBRY DRINKARD UNIT
#239 WELL LOCATION

EXISTING APACHE PIPELINE

COORDINATE TABLE				
WELL NAME	NORTHING (N.A.D. 27)	EASTING (N.A.D. 27)	NORTHING (N.A.D. 83)	EASTING (N.A.D. 83)
WBDU #239 SURFACE LOCATION & PENETRATION POINT	544805.87	861937.20	544866.04	903121.24
ELEVATION	LATITUDE (N.A.D. 27)	LONGITUDE (N.A.D. 27)	LATITUDE (N.A.D. 83)	LONGITUDE (N.A.D. 83)
3,461.49'	32.492307 N	-103.159494 W	32.492427 N	-103.159964 W

200' 0' 200' 400 FEET

SCALE: 1" = 200'
GRAPHIC SCALE IN FEET

PREPARED FROM SURVEY
DATED: AUGUST 1, 2014

NOTES:

1.) BEARINGS & COORDINATES SHOWN HEREON ARE REFERENCED TO THE NEW MEXICO STATE PLANE COORDINATE SYSTEM, N.A.D. 27 & 83 DATUM (NEW MEXICO EAST ZONE) DERIVED FROM GPS OBSERVATIONS AND ARE BASED REFERENCE STATIONS - "E 148" - MALJAMAR, NE (1985)

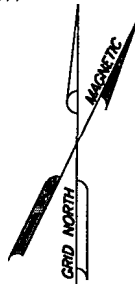
2.) LATITUDE & LONGITUDE ARE NAD 83 & 27 GEOGRAPHIC.

3.) THIS IS AN WELL PLAT AND DOES NOT REPRESENT A TRUE BOUNDARY SURVEY. THIS SURVEY IS BASED ON OWNERSHIP AND EASEMENT INFORMATION PROVIDED BY APACHE CORPORATION. SURVEYOR DID NOT ABSTRACT SUBJECT TRACT AND THERE MAY BE EASEMENTS OR OTHER ENCUMBRANCES THAT AFFECT THE SUBJECT TRACT THAT ARE NOT SHOWN HEREON.



TRANSGLOBAL
SERVICES LLC

8205 Camp Bowie West, Suite 204
Fort Worth, Texas 76116
(817) 386-0362 ~ Fax (862) 224-3377



THE WEST BLINEBRY DRINKARD UNIT #239 IS LOCATED
APPROXIMATELY 4 MILES NORTH-NORTHWEST OF
EUNICE, NEW MEXICO

Apache

Location of

PROPOSED ELECTRIC LINE

Section 9, Township 21 South, Range 37 East of P.M.

Lea County, New Mexico

DRAWN BY: P.R.W.	DATE: 8-04-14	DWG. NO.	REV.
CHECKED BY:	DATE:	WBDU #239 WELL LOCATION	0
SCALE: 1" = 100'	APP.:	PAGE 1 OF 1	



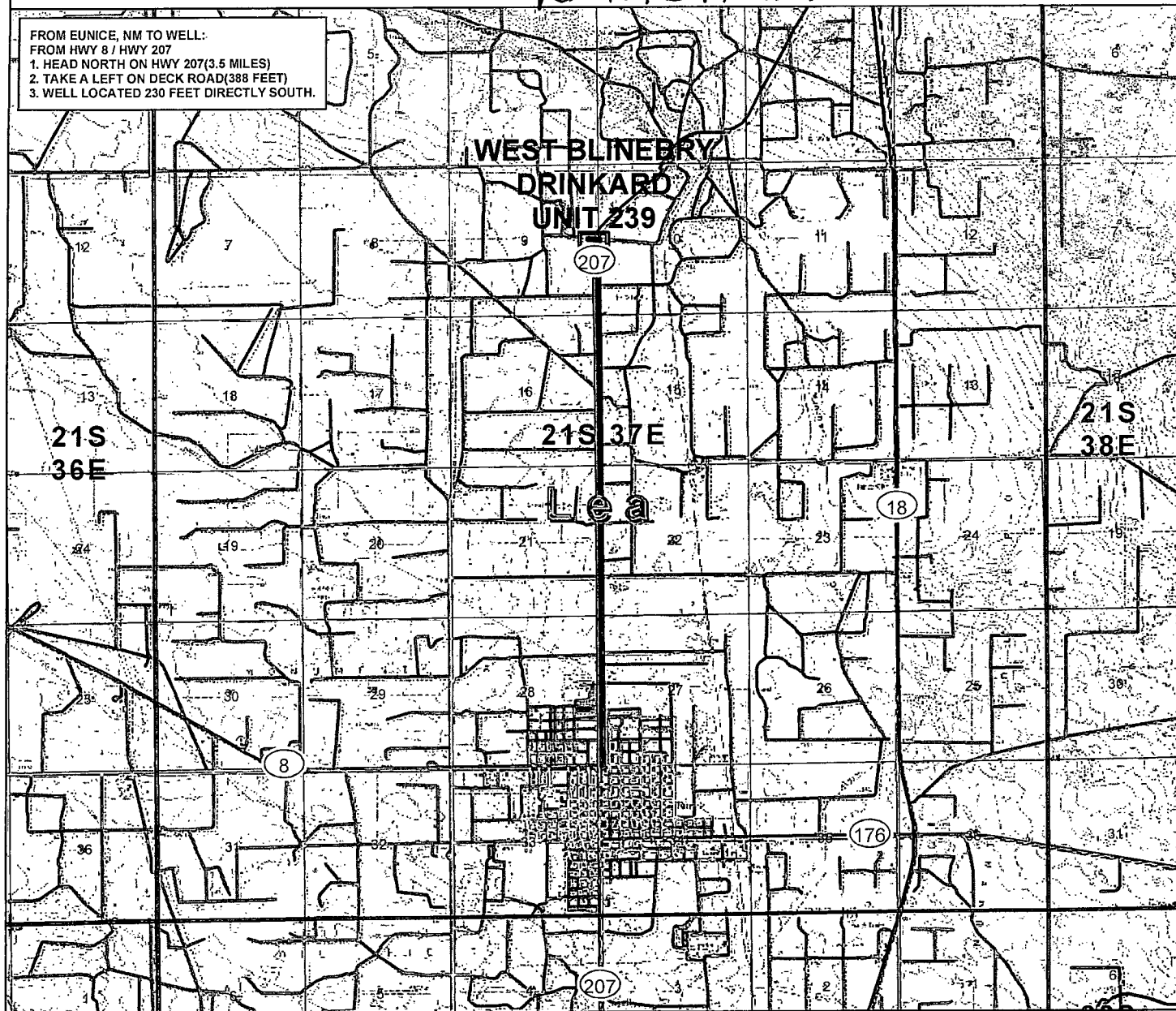
WEST BLINEBRY DRINKARD UNIT 239

2335' FLS, 215' FEL
SEC 9, T21S R37E

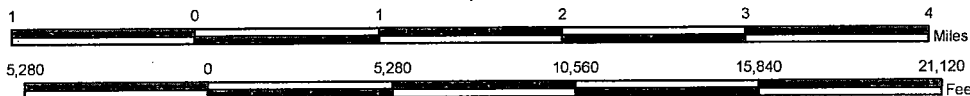
EXHIBIT #1



FROM EUNICE, NM TO WELL:
FROM HWY 8 / HWY 207
1. HEAD NORTH ON HWY 207(3.5 MILES)
2. TAKE A LEFT ON DECK ROAD(388 FEET)
3. WELL LOCATED 230 FEET DIRECTLY SOUTH.

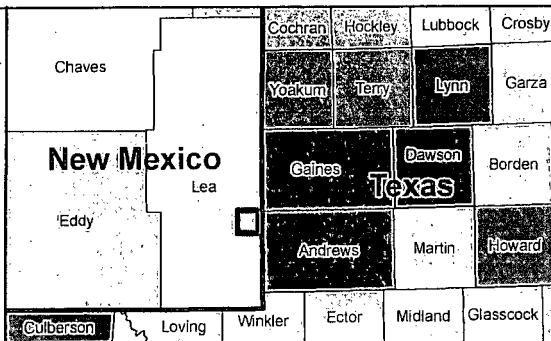


1 inch = 5,280 feet



Legend

- BLM
- Private
- State
- Routes
- Permit
- Gas
- Oil
- Injection Well
- Plugged and Abandoned
- Plugged
- Shut-in Gas
- Shut-in Oil
- Temporarily Abandoned



NAD 1927 StatePlane
New Mexico East FIPS 3001
Projection: Transverse Mercator
False Easting: 500000.000000
False Northing: 0.000000
Central Meridian: -104.333333
Scale Factor: 0.999909
Latitude Of Origin: 31.000000
Linear Unit: Foot US
GCS North American 1927
Datum: D North American 1927

Drawn By: Nicholas Tallant

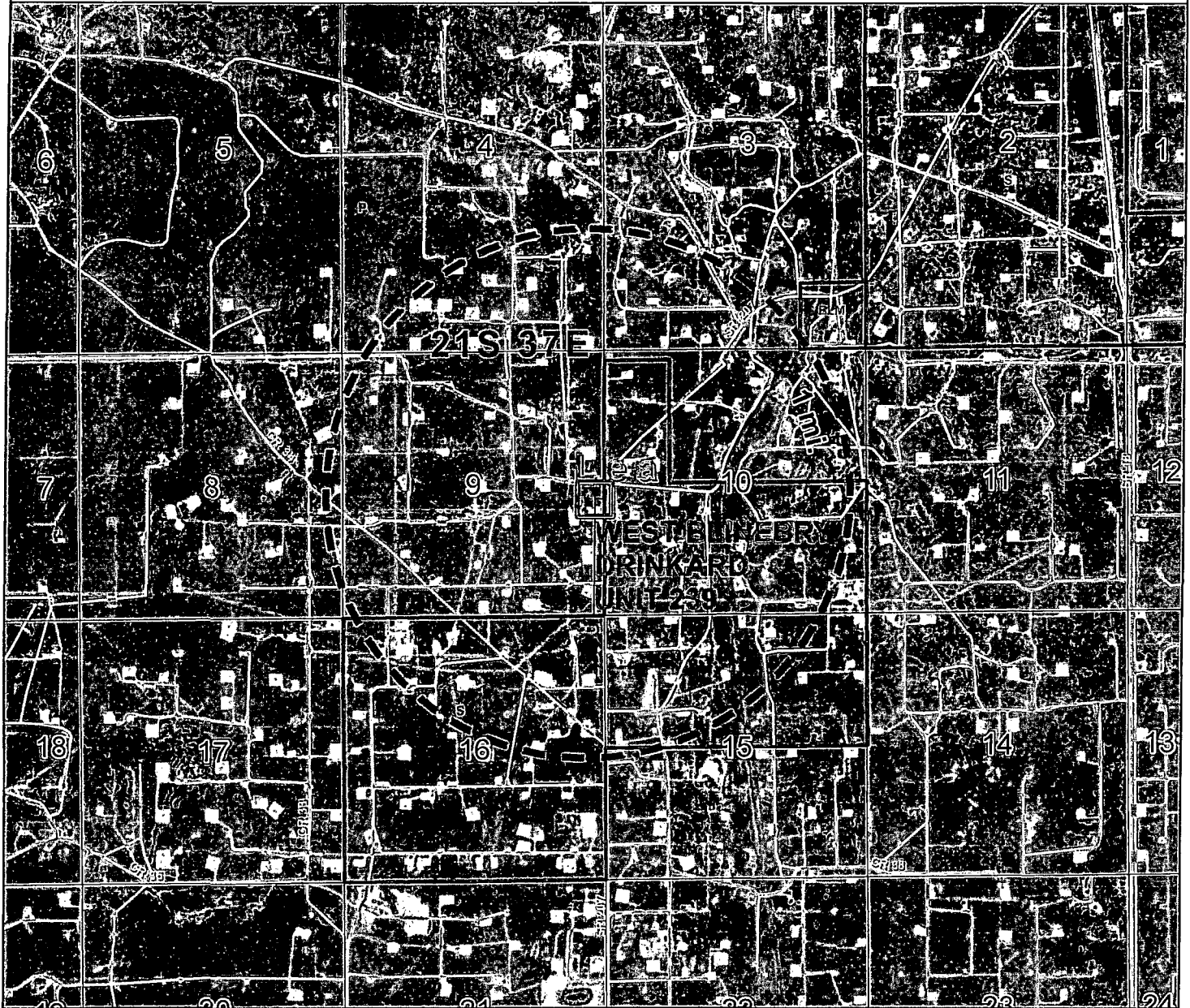
Checked by:

Date: 11/7/2014

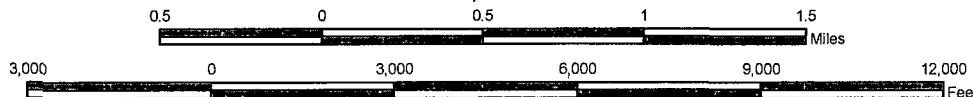
Sheet
1 of 1



WEST BLINEBRY DRINKARD UNIT 239D
2335' FSL, 215' FEL
SEC 9, T21S R37E
LEA, NM

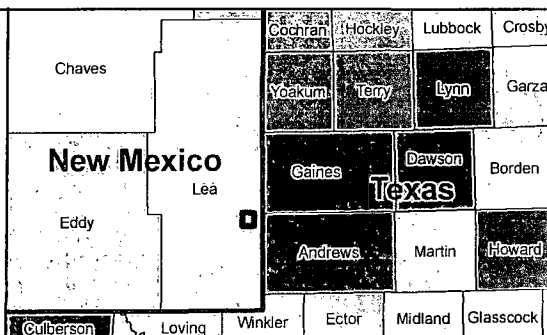


1 inch = 3,000 feet



Legend

- 1mi Buffer
- Apache Well
- BLM
- Private
- State
- Ownership Boundary
- Permit
- Gas
- Oil
- Injection Well
- Plugged and Abandoned
- Plugged
- Shut-in Gas
- Shut-in Oil
- Temporarily Abandoned



NAD 1927 StatePlane
New Mexico East FIPS 3001
Projection: Transverse Mercator
False Easting: 500000.000000
False Northing: 0.000000
Central Meridian: -104.333333
Scale Factor: 0.999909
Latitude Of Origin: 31.000000
Linear Unit: Foot US

GCS North American 1927
Datum: D North American 1927

Drawn By: Nicholas Tallant

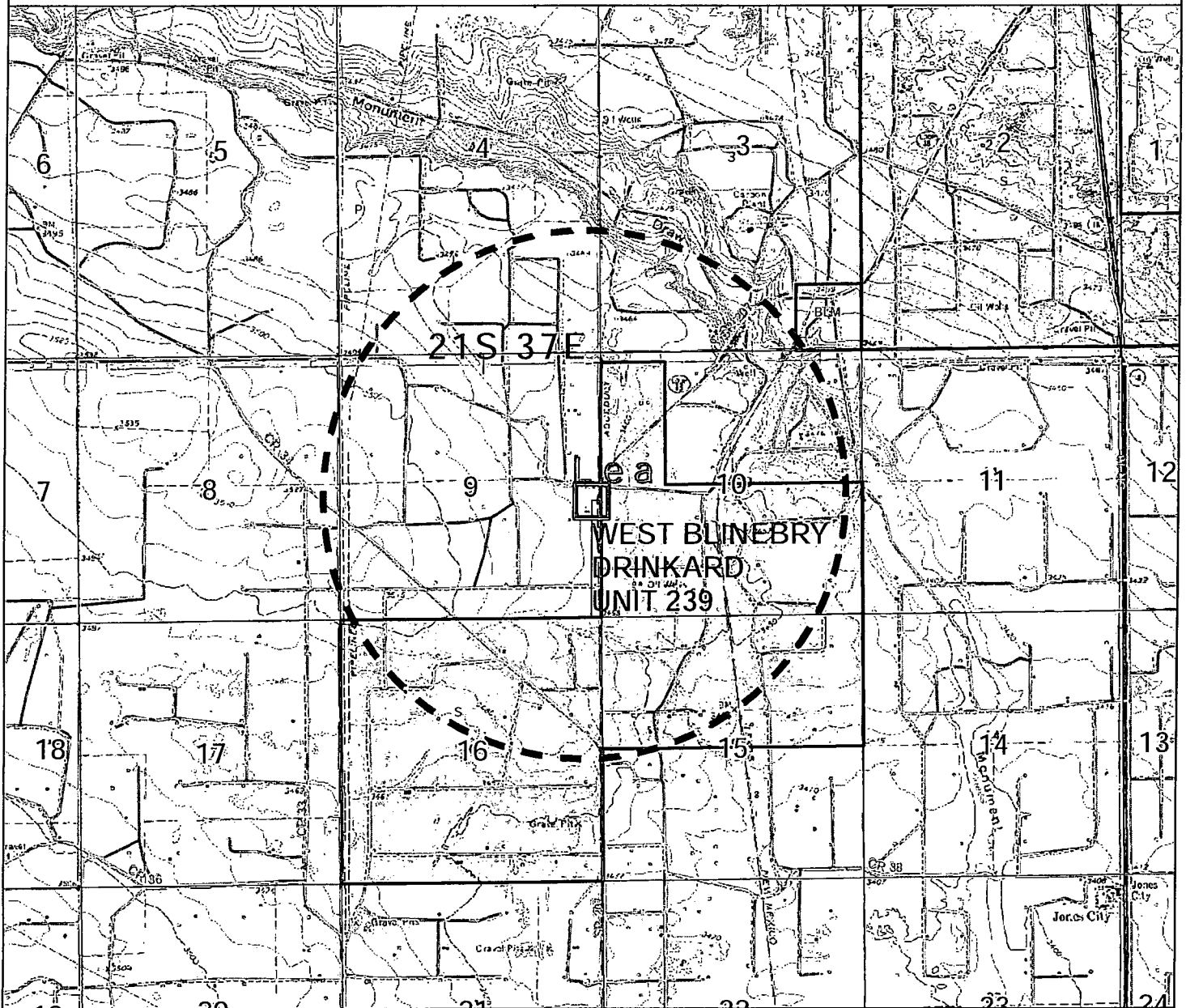
Checked by:

Date: 11/10/2014

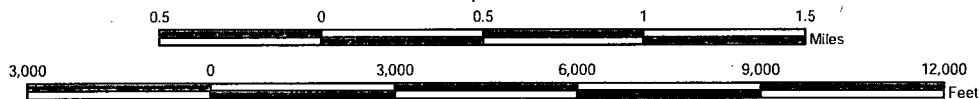
Sheet 1 of 1



WEST BLINEBRY DRINKARD UNIT 239D
2335' FSL, 215' FEL
SEC 9, T21S R37E
LEA, NM

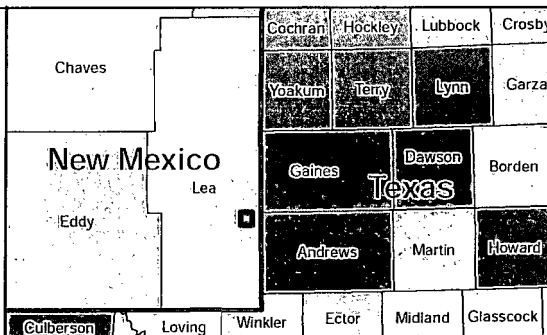


1 inch = 3,000 feet



Legend

- 1mi Buffer
- Apache Well
- BLM
- Private
- State
- Ownership Boundary
- Permit
- Gas
- Oil
- Injection Well
- Plugged and Abandoned
- Plugged
- Shut-in Gas
- Shut-in Oil
- Temporarily Abandoned



NAD 1927 StatePlane
New Mexico East FIPS 3001
Projection: Transverse Mercator
False Easting: 500000.000000
False Northing: 0.000000
Central Meridian: -104.333333
Scale Factor: 0.999909
Latitude Of Origin: 31.000000
Linear Unit: Foot US

GCS North American 1927
Datum: D North American 1927

Drawn By: Nicholas Tallant

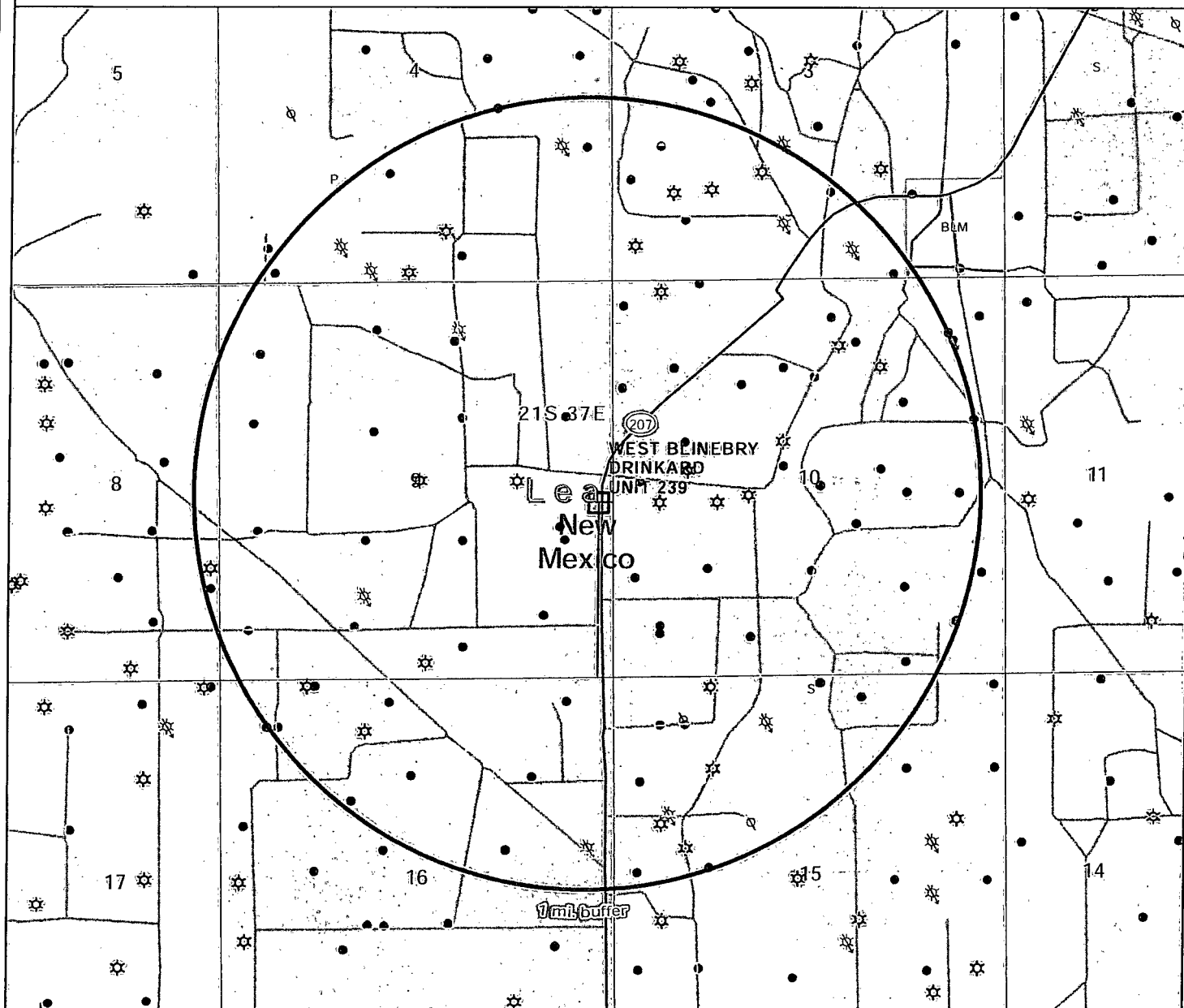
Checked by:

Date: 11/10/2014

Sheet 1 of 1



WEST BLINEBRY DRINKARD UNIT 239D
2335' FSL, 215' FEL
SEC 9, T21S R37E
LEA, NM

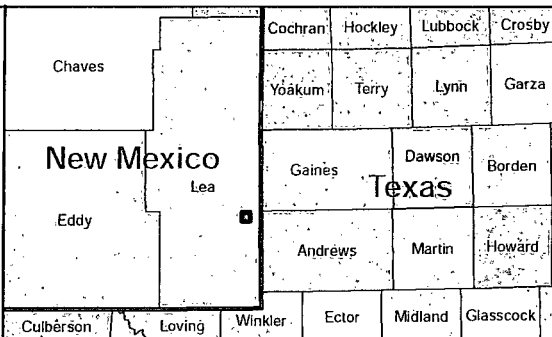


1 inch = 2,000 feet



Legend

- Apache Well
- Permit
- Gas
- Oil
- Injection Well
- Plugged and Abandoned
- Plugged
- Shut-In Gas
- Shut-In Oil
- Temporarily Abandoned
- 1 mi. buffer
- BLM
- Private
- State



NAD 1927 StatePlane
New Mexico East FIPS 3001
Projection: Transverse Mercator
False Easting: 500000.000000
False Northing: 0.000000
Central Meridian: -104.333333
Scale Factor: 0.999909
Latitude Of Origin: 31.000000
Linear Unit: Foot US

GCS North American 1927
Datum: D North American 1927

Drawn By: Nicholas Tallant

Checked by:

Date: 11/10/2014

Sheet
1 of 1

EXHIBIT #2

APACHE CORPORATION

WEST BLINEBRY DRINKARD UNIT #239D

SHL: 2315' FSL & 340' FEL

BHL: 2450' FNL & 340' FEL

1 MILE RADIUS



POSTED WELL DATA

Well Name
Well Number

WELL SYMBOLS

- Abandoned Oil and Gas Well
- Dry Hole, With Show of Gas
- Dry Hole, With Show of Oil
- Dry Hole
- Gas Well
- Active Injection
- Key Injection well
- Location
- New Location
- Oil & Gas Well
- Oil Well
- P&A'd Gas Well
- Active Gas Producer
- Plugged and Abandoned
- Active Producer
- PERMIT
- Pilot Hole
- P&A Oil

December 3, 2014

PETRA 12/3/2014 8:25:17 AM

