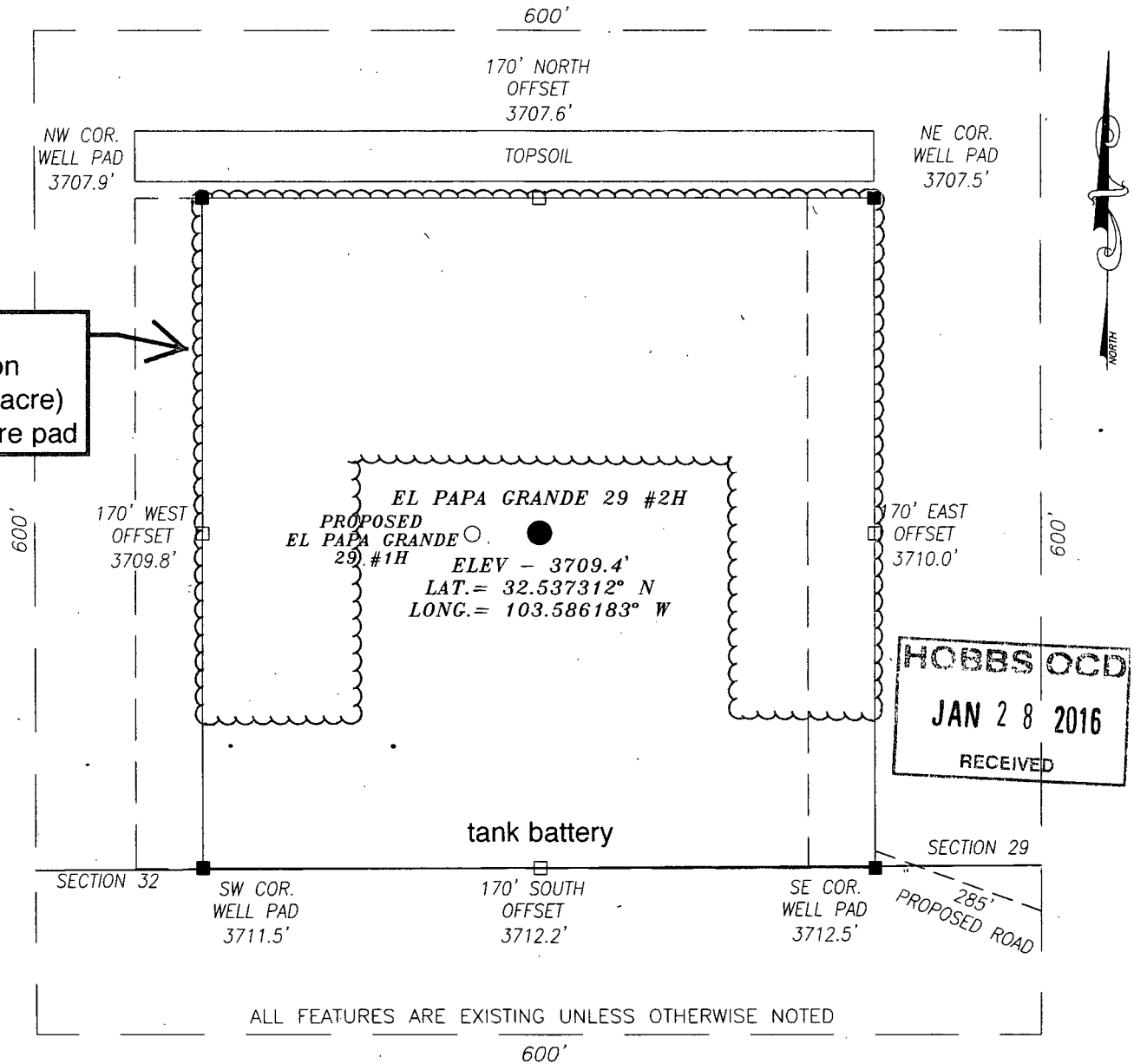


SECTION 29, TOWNSHIP 20 SOUTH, RANGE 34 EAST, N.M.P.M.,

LEA COUNTY

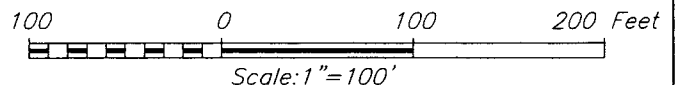
INTERIM RECLAMATION DIAGRAM

NEW MEXICO



DIRECTIONS TO LOCATION:

HEADING EAST ON HWY 176 TURN LEFT (NORTH) APPROX. 0.1 MILE PAST MILE MARKER 9 ONTO A CALICHE ROAD AND GO APPROX. 1.0 MILE; THEN TURN LEFT (WEST) AND GO APPROX. 300 FEET TO EXISTING GOOSE ST. #1H WELL PAD; GO TO NORTHWEST PAD CORNER THEN PROPOSED WELL IS APPROX. 540 FEET NORTHWEST.



HARCROW SURVEYING, LLC

1107 WATSON, ARTESIA, N.M. 88210
PH: (575) 513-2570 FAX: (575) 746-2158
chad_harcrow77@yahoo.com



DIAMONDBACK RESOURCES, LLC

EL PAPA GRANDE 29 #2H WELL
LOCATED 200 FEET FROM THE SOUTH LINE
AND 1340 FEET FROM THE WEST LINE OF SECTION 29,
TOWNSHIP 20 SOUTH, RANGE 34 EAST, N.M.P.M.,
LEA COUNTY, NEW MEXICO

SURVEY DATE: 08/06/2013

PAGE: 1 OF 1

DRAFTING DATE: 08/07/2013

APPROVED BY: CH

DRAWN BY: TL

FILE: 13-517

FEB 01 2016

Diamondback Resources LLC
El Papa Grande 29 2H
SHL: 200' FSL & 1340' FWL
BHL: 330' FNL & 1980' FWL
Sec. 29, T. 20 S., R. 34 E., Lea County, NM

SURFACE PLAN PAGE 1

Surface Use Plan

1. ROAD DIRECTIONS & DESCRIPTIONS (See MAPS 1 - 5)

From Carlsbad...

Go East 32 miles on US 62/180 to NM 176 junction

Then turn right and go Southeast 9.1 miles on paved NM 176

Then turn left and go North 1 mile on a caliche road to existing Goose State 1H

From the NW corner of the Goose State 1H pad...

Then go Northwest 285' cross-country to the El Papa Grande pad

Roads will be maintained to a standard at least equal to or better than their present condition.

2. ROAD TO BE BUILT OR UPGRADED (MAPS 3 & 4)

Approximately 285' of new road will be built. The new road will be crowned, have a 14' wide driving surface, and be surfaced with caliche. Maximum disturbed width = 20'. Maximum grade = 1%. Maximum cut or fill = 1'. No culvert, cattle guard, or turn out is needed. Existing road upgrading will consist of fixing potholes with caliche.

3. EXISTING WELLS (See MAP 6)

Existing oil, gas, and P & A wells are within a mile. There are no water, injection, or disposal wells within a mile radius.

4. PROPOSED PRODUCTION FACILITIES (See MAP 7)

A tank battery will be installed on the south side of the pad.

Diamondback Resources LLC
El Papa Grande 29 2H
SHL: 200' FSL & 1340' FWL
BHL: 330' FNL & 1980' FWL
Sec. 29, T. 20 S., R. 34 E., Lea County, NM

SURFACE PLAN PAGE 2

5. WATER SUPPLY (See MAP 8)

Water will be trucked from Berry's water station on private land in 2-21s-33e.

6. CONSTRUCTION MATERIALS & METHODS

NM One Call (1-800-321-ALERT) will be notified before construction starts. The topsoil and brush will be stockpiled north of the pad. V door will be to the east. A closed loop drilling system will be used. Caliche will be bought and hauled from an existing approved caliche pit. Dirt contractor will be responsible for caliche.

7. WASTE DISPOSAL

All trash will be placed in a portable trash cage. It will be hauled to a county landfill. There will be no trash burning. Contents of the mud tanks (cuttings, chemicals, salt) will be hauled to state approved disposal sites. Human waste will be disposed of in chemical toilets and hauled to an approved dump station.

8. ANCILLARY FACILITIES

There will be no airstrip or camp. Camper trailers will be on location for the company man, tool pusher, or mud logger.

9. WELL SITE LAYOUT

See rig layout for depictions of the well pad, trash cage, access onto the location, parking, living facilities, and rig orientation.

Diamondback Resources LLC
El Papa Grande 29 2H
SHL: 200' FSL & 1340' FWL
BHL: 330' FNL & 1980' FWL
Sec. 29, T. 20 S., R. 34 E., Lea County, NM

SURFACE PLAN PAGE 3

10. RECLAMATION

Interim reclamation will consist of removing caliche from the west, north, and east sides of the pad. Those areas (1.93 acres) will be contoured to a natural shape and no steeper than 3:1. Soil and brush will be evenly spread over disturbed areas. Seeded areas will be ripped or harrowed. A BLM approved seed mix will be sown in a BLM approved manner. Enough stockpiled topsoil will be retained to cover the remainder of the pad when the well is plugged. This will leave half the pad in use. After the well is plugged, then the remaining 1.94 acres of the pad will be similarly reclaimed. Noxious weeds will be controlled.

11. SURFACE OWNER

All pad construction and 26' of new road will be on BLM. The remaining (259') of new road will be on State land. Diamondback has an approved State road easement (R-33907).

12. OTHER INFORMATION

On site inspection was held with Trishia Bad Bear (BLM) on October 23, 2013.

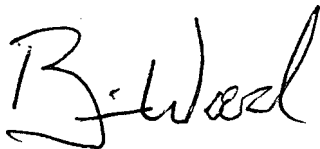
Lone Mountain filed archaeology report NMCRIS 128633 on September 10, 2013.

Diamondback Resources LLC
El Papa Grande 29 2H
SHL: 200' FSL & 1340' FWL
BHL: 330' FNL & 1980' FWL
Sec. 29, T. 20 S., R. 34 E., Lea County, NM

SURFACE PLAN PAGE 4

REPRESENTATION

I hereby certify that I, or someone under my direct supervision, have inspected the drill site and access route proposed herein; that I am familiar with the conditions which currently exist; that I have full knowledge of state and Federal laws applicable to this operation; that the statements made in this APD package are, to the best of my knowledge, true and correct; and that the work associated with the operations proposed herein will be performed in conformity with this APD package and the terms and conditions under which it is approved. I also certify that I, or the company I represent, am responsible for the operations conducted under this application. These statements are subject to the provisions of 18 U. S. C. 1001 for the filing of false statements. Executed this 14th day of September, 2014.



Brian Wood, Consultant
Permits West, Inc.

37 Verano Loop, Santa Fe, NM 87508

(505) 466-8120

FAX: (505) 466-9682

Cellular: (505) 699-2276

Field representatives will be:

Buddie Livingston

(918) 633-3490

or

John Maxey

(575) 623-0438