

District I
1625 N. French Dr., Hobbs, NM 88240
Phone: (575) 393-6161 Fax: (575) 393-0720
District II
811 S. First St., Artesia, NM 88210
Phone: (575) 748-1283 Fax: (575) 748-9720
District III
1000 Rio Brazos Road, Aztec, NM 87410
Phone: (505) 334-6178 Fax: (505) 334-6170
District IV
1220 S. St. Francis Dr., Santa Fe, NM 87505
Phone: (505) 476-3460 Fax: (505) 476-3462

State of New Mexico
Energy, Minerals & Natural Resources
Department
OIL CONSERVATION DIVISION
1220 South St. Francis Dr.
Santa Fe, NM 87505

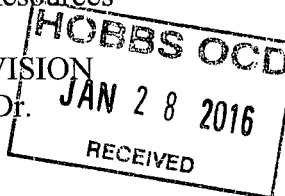
FORM C-102

Revised August 1, 2011

Submit one copy to appropriate

District Office

☐ AMENDED REPORT



WELL LOCATION AND ACREAGE DEDICATION PLAT

¹ API Number 30-025- 43053	² Pool Code 58960 37580	³ Pool Name LEA, BS, SOUTH
⁴ Property Code 315962	⁵ Property Name DELLA 29 FED COM	⁶ Well Number #601H
⁷ OGRID No. 7377	⁸ Operator Name EOG RESOURCES, INC.	⁹ Elevation 3714'

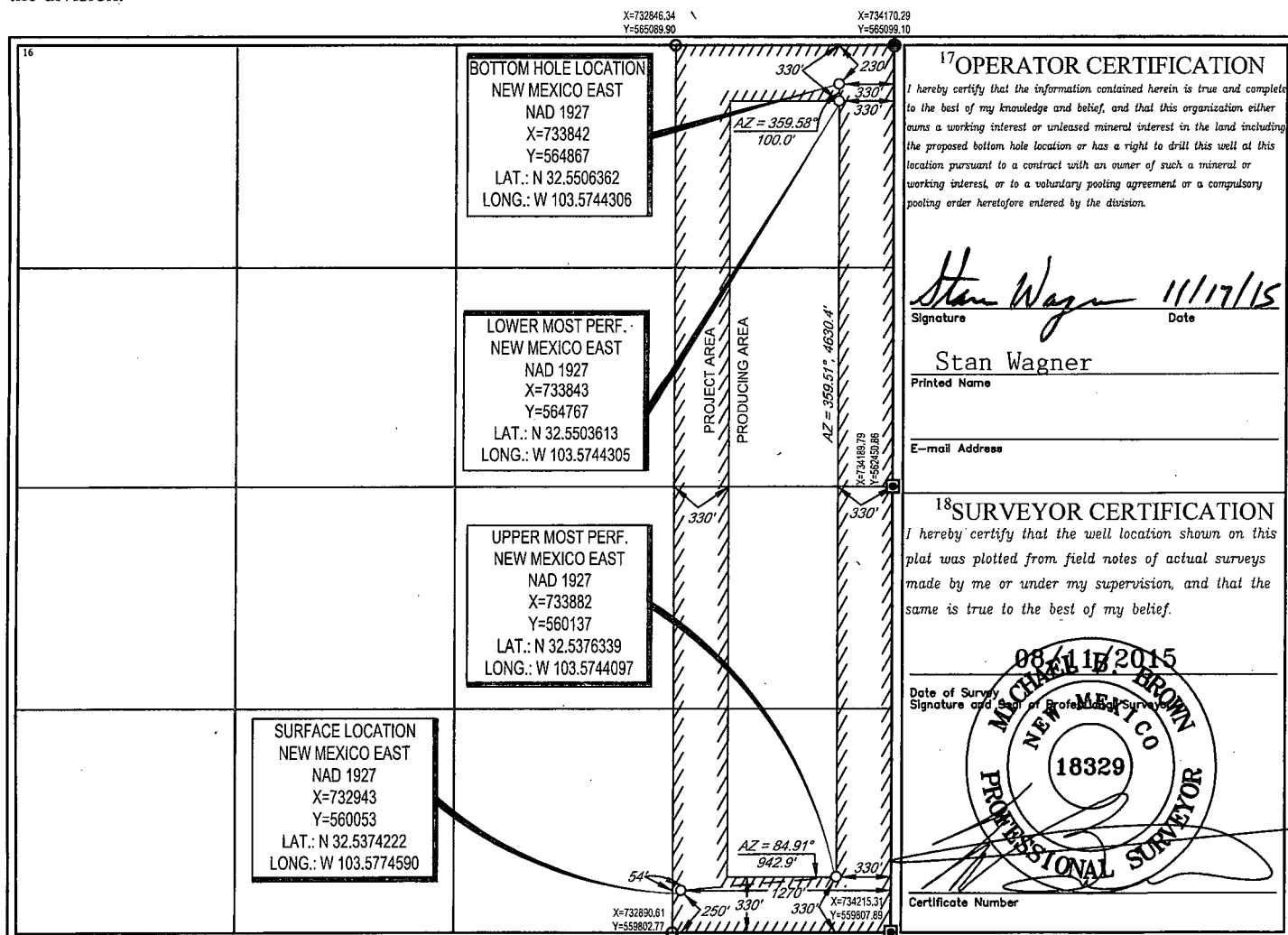
¹⁰Surface Location

UL or lot no.	Section	Township	Range	Lot Idn	Feet from the	North/South line	Feet from the	East/West line	County
P	29	20-S	34-E	-	250'	SOUTH	1270'	EAST	LEA

UL or lot no.	Section	Township	Range	Lot Idn	Feet from the	North/South line	Feet from the	East/West line	County
A	29	20-S	34-E	-	230'	NORTH	330'	EAST	LEA

¹² Dedicated Acres 160.00	¹³ Joint or Infill	¹⁴ Consolidation Code	¹⁵ Order No.
--	-------------------------------	----------------------------------	-------------------------

No allowable will be assigned to this completion until all interests have been consolidated or a non-standard unit has been approved by the division.



FEB 02 2016

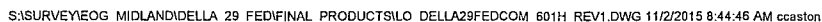
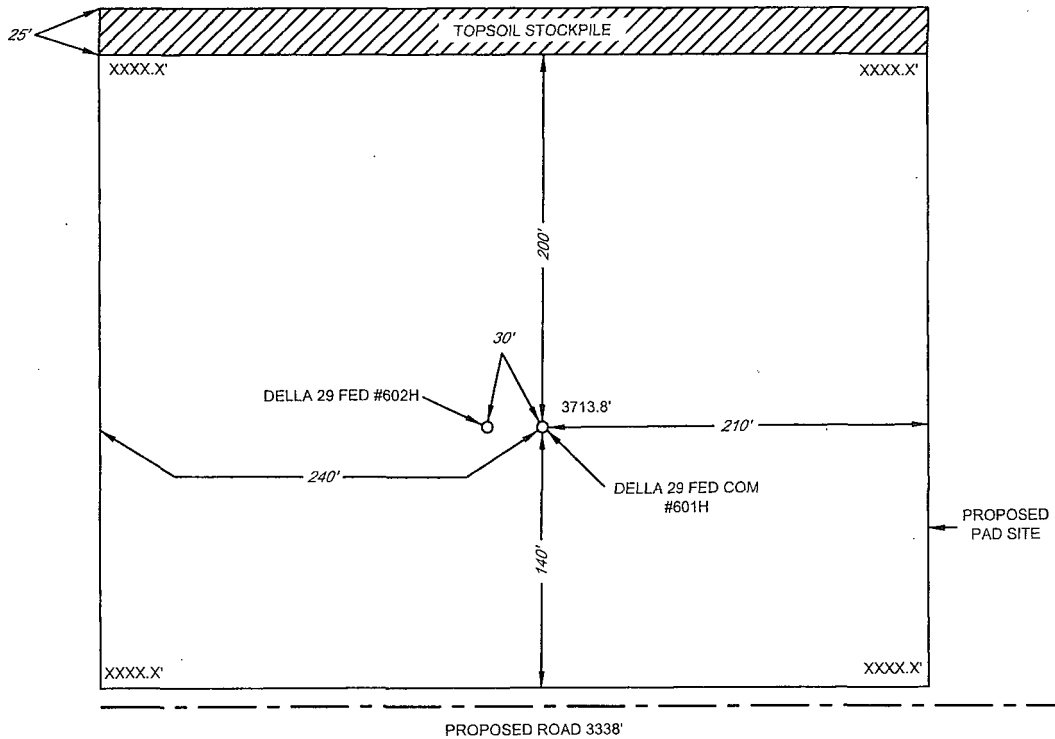




EXHIBIT 2B

SECTION 29, TOWNSHIP 20-S, RANGE 34-E, N.M.P.M.
LEA COUNTY, NEW MEXICO

DETAIL VIEW
SCALE: 1" = 100'



SECTION LINE

LEASE NAME & WELL NO.: DELLA 29 FED COM #601H
#601H LATITUDE N 32.5374222 #601H LONGITUDE W 103.5774590

LEGEND

SECTION LINE



SCALE: 1" = 100'
0' 50' 100'

ALL BEARINGS, DISTANCES, AND COORDINATE VALUES CONTAINED HEREON ARE GRID
BASED UPON THE NEW MEXICO STATE PLANE COORDINATE SYSTEM, EAST ZONE OF THE
NORTH AMERICAN DATUM 1927, U.S. SURVEY FEET

THIS PROPOSED PAD SITE LOCATION SHOWN HEREON HAS BEEN SURVEYED ON THE GROUND UNDER
MY SUPERVISION AND PREPARED ACCORDING TO THE EVIDENCE FOUND AT THE TIME OF SURVEY,
AND DATA PROVIDED BY EOG RESOURCES, INC. THIS CERTIFICATION IS MADE AND LIMITED TO THOSE
PERSONS OR ENTITIES SHOWN ON THE FACE OF THIS PLAT AND IS NON-TRANSFERABLE. THIS
SURVEY IS CERTIFIED FOR THIS TRANSACTION ONLY.



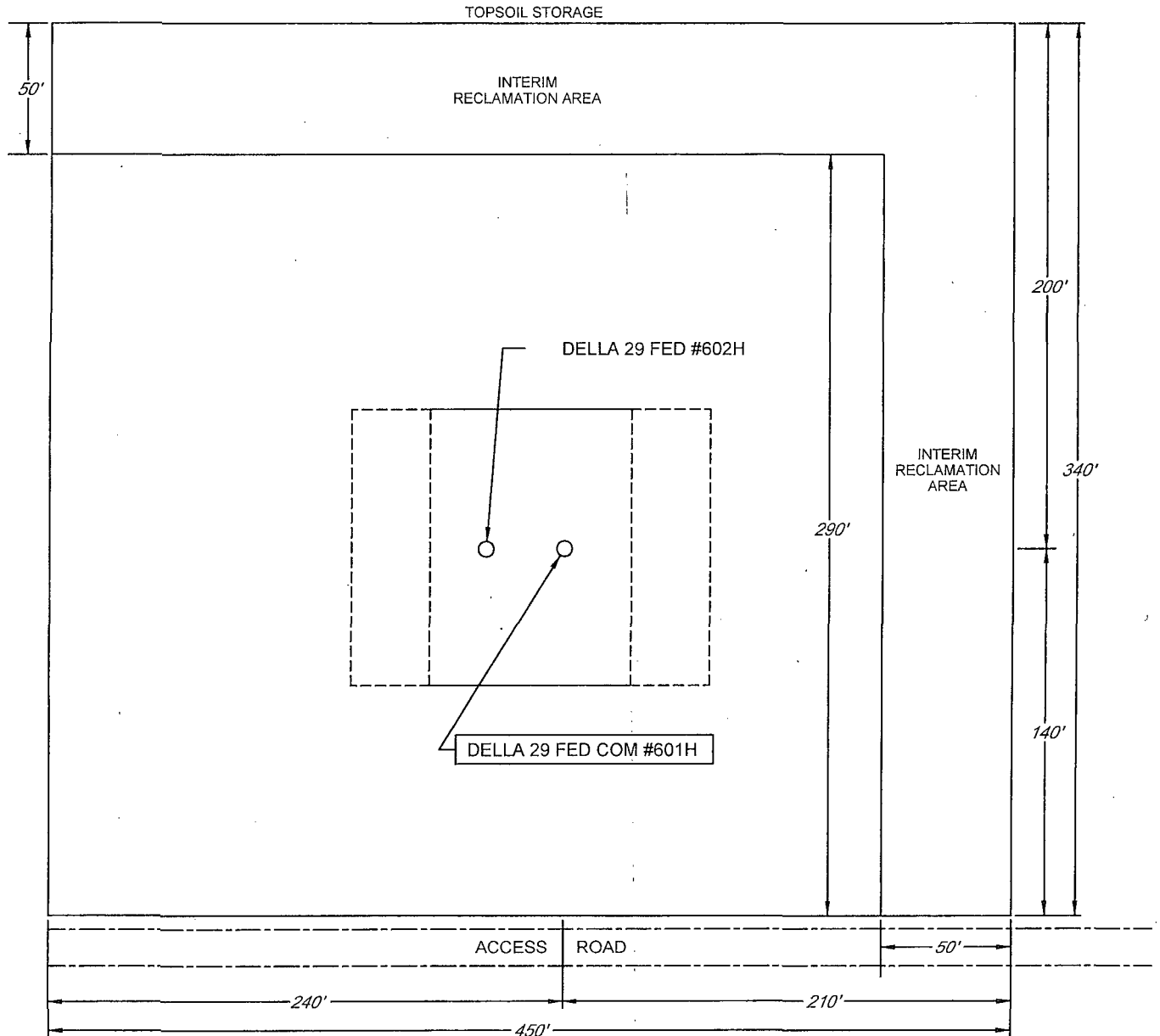
TOPOGRAPHIC
LOYALTY INNOVATION LEGACY

1400 EVERMAN PARKWAY, Ste. 197 • FT. WORTH, TEXAS 76140
TELEPHONE: (817) 744-7512 • FAX (817) 744-7548
2903 NORTH BIG SPRING • MIDLAND, TEXAS 79705
TELEPHONE: (432) 682-1653 OR (800) 767-1653 • FAX (432) 682-1743
WWW.TOPOGRAPHIC.COM

EXHIBIT 2C
RECLAMATION AND FACILITY DIAGRAM - PRODUCTION FACILITIES DIAGRAM

SECTION 29, TOWNSHIP 20-S, RANGE 34-E, N.M.P.M.
LEA COUNTY, NEW MEXICO

DETAIL VIEW
SCALE: 1" = 60'



LEASE NAME & WELL NO.: DELLA 29 FED COM #601H
#601H LATITUDE N 32.5374222 #601H LONGITUDE W 103.5774590



eog resources, inc.

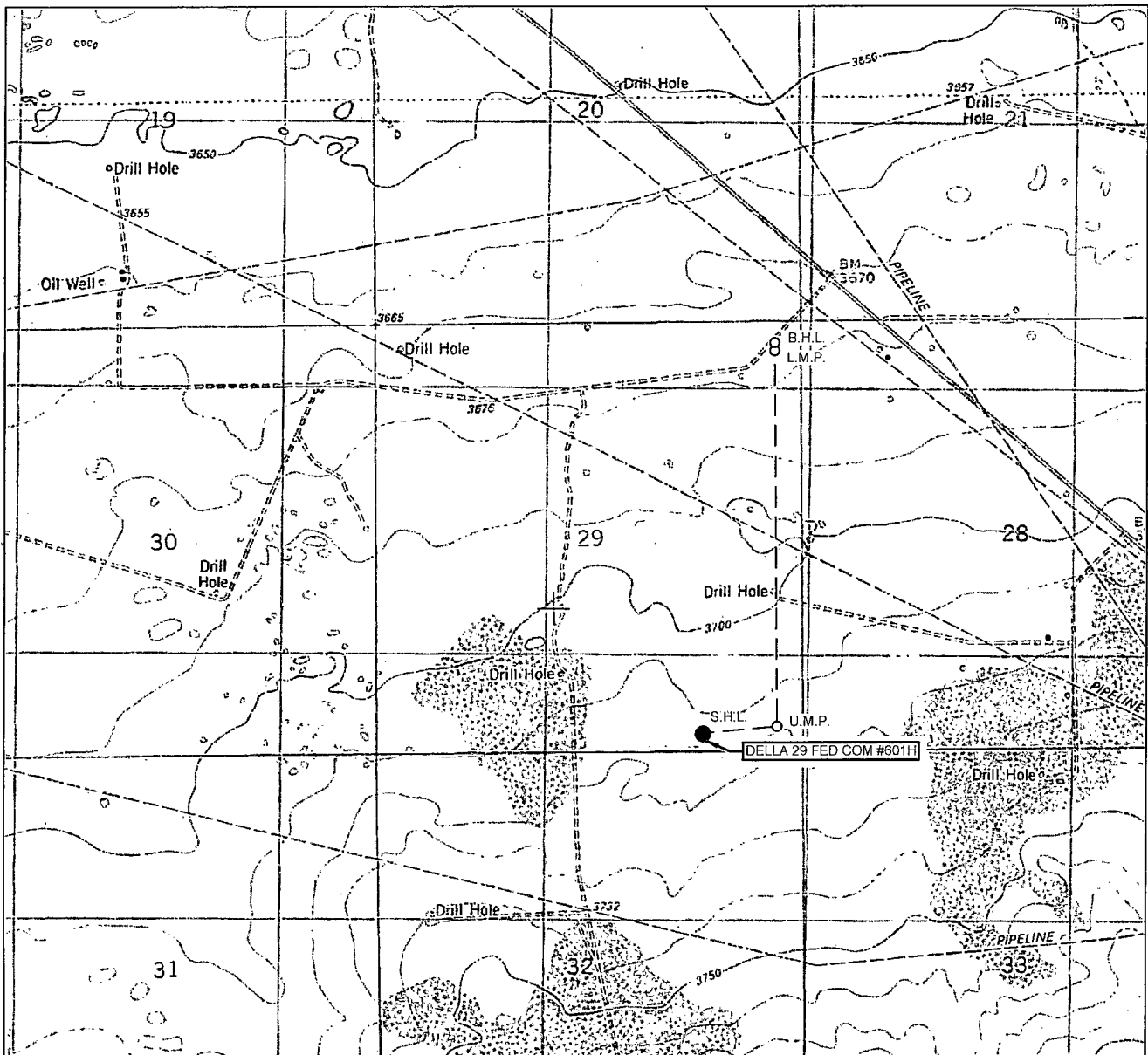
The map displays a complex network of oil and gas fields and wells in the Permian Basin. Key features include:

- Fields and Wells:** Numerous fields are labeled, such as 'Dakota Res.', 'Wollen Fed', 'Chevron', 'Mobil HBP', 'Hudson et al', 'Featherstone', 'Blanco', 'W.T. Wynn', 'Mary Wilk', 'Rubicen', 'Phillips', 'Bluestem', and 'Yates'. Well numbers and production rates are also indicated.
- Company Names:** Various companies are mentioned, including 'Chevron', 'Mobil', 'Hudson et al', 'Featherstone', 'Blanco', 'W.T. Wynn', 'Mary Wilk', 'Rubicen', 'Phillips', 'Bluestem', and 'Yates'.
- Production Data:** Production rates are given in barrels per day (BBL/D) or thousands of barrels per day (MBBL/D). For example, 'Rubicen 06 G' shows a production rate of 91,2016 BBL/D.
- Geographical Features:** The map shows the layout of the Permian Basin, with various fields and wells distributed across the area.
- Scale and Orientation:** A scale bar indicates a distance of 1 mile. The map is oriented with North at the top.

The map is a detailed representation of the Permian Basin, showing the distribution of oil and gas fields and wells, and the production data for each. It is a valuable resource for understanding the geology and production of the Permian Basin.

S:\SURVEY\EOG MIDLAND\IDELLA 29 FED\FINAL PRODUCTS\SILO DELLA29FED\COM 601H REV1.DWG 11/2/2015 8:45:07 AM ccaston

LOCATION & ELEVATION VERIFICATION MAP



LEASE NAME & WELL NO.: DELLA 29 FED COM #601H

SECTION 29 TWP 20-S RGE 34-E SURVEY N.M.P.M.
 COUNTY LEA STATE NM ELEVATION 3714'
 DESCRIPTION 250' FSL & 1270' FEL

LATITUDE N 32.5374222 LONGITUDE W 103.5774590



SCALE: 1" = 2000'
 0' 1000' 2000'

THIS EASEMENT/SERVITUDE LOCATION SHOWN HEREON HAS BEEN SURVEYED ON THE GROUND UNDER MY SUPERVISION AND PREPARED ACCORDING TO THE EVIDENCE FOUND AT THE TIME OF SURVEY, AND DATA PROVIDED BY EOG RESOURCES, INC. THIS CERTIFICATION IS MADE AND LIMITED TO THOSE PERSONS OR ENTITIES SHOWN ON THE FACE OF THIS PLAT AND IS NON-TRANSFERABLE. THIS SURVEY IS CERTIFIED FOR THIS TRANSACTION ONLY.

ALL BEARINGS, DISTANCES, AND COORDINATE VALUES CONTAINED HEREON ARE GRID BASED UPON THE NEW MEXICO STATE PLANE COORDINATE SYSTEM, EAST ZONE OF THE NORTH AMERICAN DATUM 1927, U.S. SURVEY FEET.



1400 EVERMAN PARKWAY, Ste. 197 • FT. WORTH, TEXAS 76140
 TELEPHONE: (817) 744-7512 • FAX (817) 744-7548
 2903 NORTH BIG SPRING • MIDLAND, TEXAS 79705
 TELEPHONE: (432) 682-1653 OR (800) 767-1653 • FAX (432) 682-1743
 WWW.TOPOGRAPHIC.COM

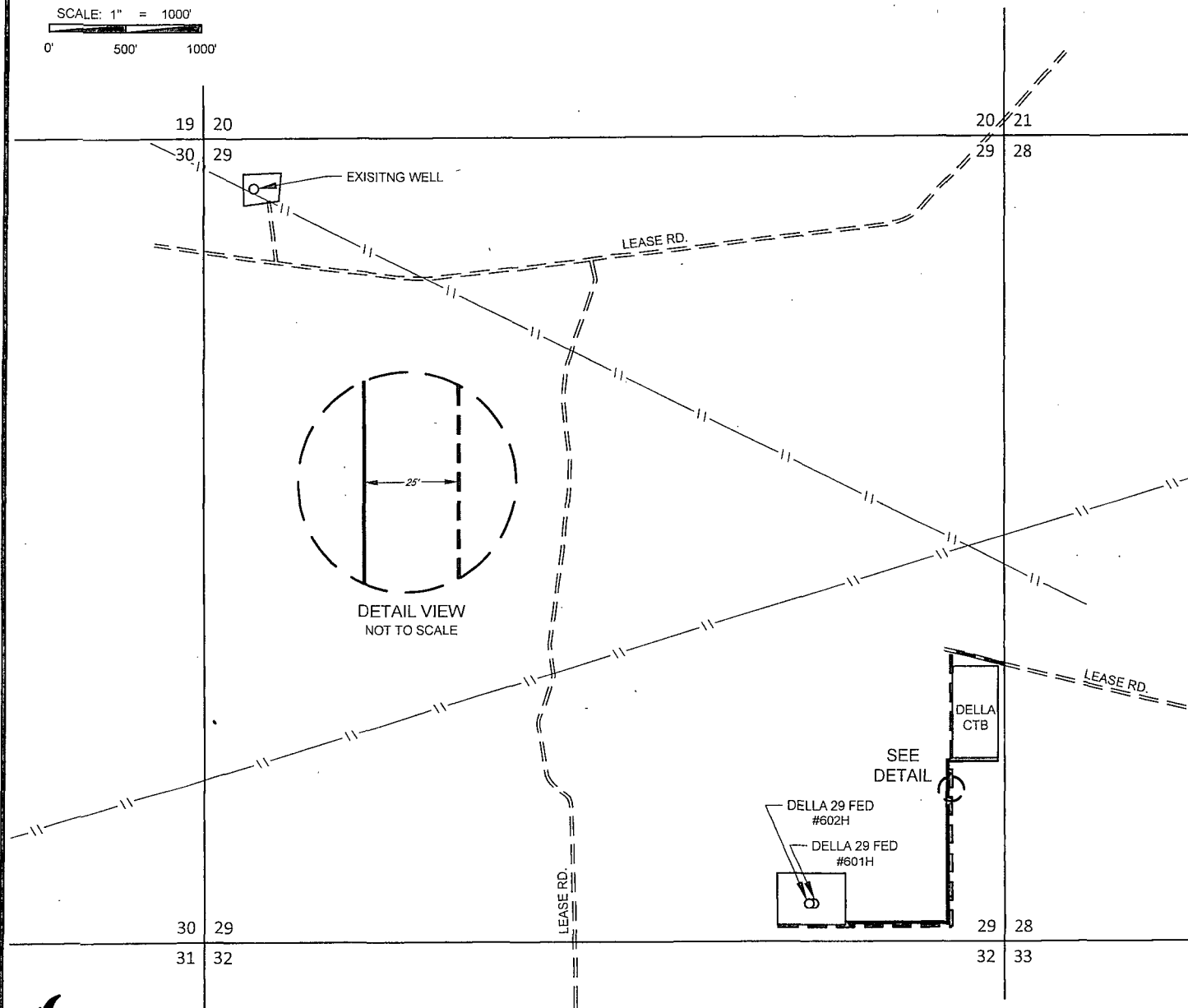
EXHIBIT 5

SECTION 29, TOWNSHIP 20 SOUTH, RANGE 34 EAST, N.M.P.M.
LEA COUNTY, NEW MEXICO

DELLA 29 FED #601H-#602H INFRASTRUCTURE MAP



SCALE: 1" = 1000'
0' 500' 1000'



Geog resources, Inc.

DELLA 29 FED #601H-#602H INFRASTRUCTURE MAP	REVISION:	
	INT	DATE
DATE: 10/09/15		
FILE: SK_DELLA29FED_601H-602H_INFRASTRUCTURE		
DRAWN BY: MML		
SHEET: 1 OF 1		

— 4" FLEX STEEL FLOWLINES
-TOTAL FOOTAGE 2090 FT
DELLA 29 FED
#602H & #601H 2090 FT

- - - - - PROPOSED LEASE RD.
-TOTAL FOOTAGE 3338 FT
DELLA 29 FED
#602H & #601H 3338 FT