

District I
1625 N. French Dr., Hobbs, NM 88240
Phone: (575) 393-6161 Fax: (575) 393-0720
District II
811 S. First St., Artesia, NM 88210
Phone: (575) 748-1283 Fax: (575) 748-9720
District III
1000 Rio Brazos Road, Aztec, NM 87410
Phone: (505) 334-6178 Fax: (505) 334-6170
District IV
1220 S. St. Francis Dr., Santa Fe, NM 87505
Phone: (505) 476-3460 Fax: (505) 476-3462

State of New Mexico
Energy, Minerals & Natural Resources
Department
OIL CONSERVATION DIVISION
1220 South St. Francis Dr.
Santa Fe, NM 87505

HOBBS OCD
JAN 14 2016
RECEIVED

Form C-102
Revised August 1, 2011
Submit one copy to appropriate
District Office

☐ AMENDED REPORT

WELL LOCATION AND ACREAGE DEDICATION PLAT

¹ API Number 30-025-42658	² Pool Code 98092	³ Pool Name Wc-025 G-09 S243336E; Upper Wolfcamp
⁴ Property Code 39643	⁵ Property Name DRAGON 36 STATE	
⁷ OGRID No. 7377	⁸ Operator Name EOG RESOURCES, INC.	⁶ Well Number #705H
		⁹ Elevation 3492'

¹⁰Surface Location

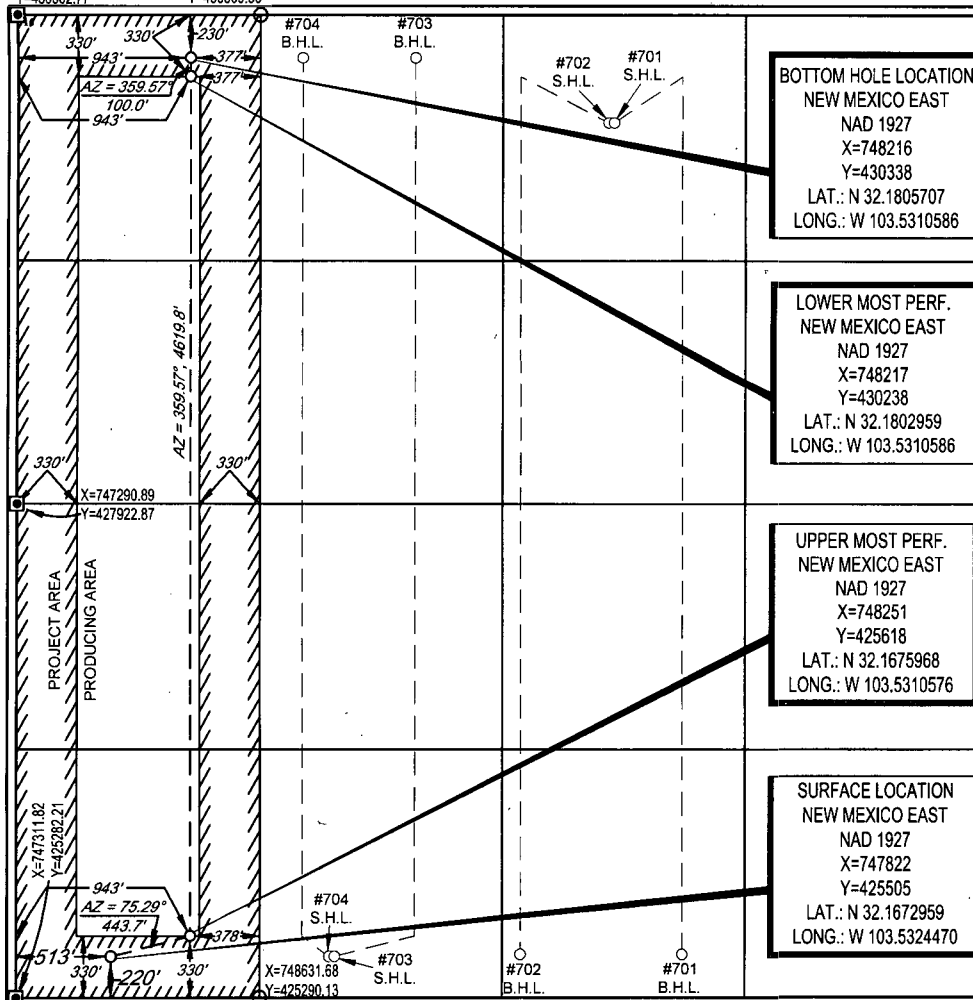
UL or lot no.	Section	Township	Range	Lot Idn	Feet from the	North/South line	Feet from the	East/West line	County
M	36	24-S	33-E	-	220'	SOUTH	513'	WEST	LEA

UL or lot no.	Section	Township	Range	Lot Idn	Feet from the	North/South line	Feet from the	East/West line	County
D	36	24-S	33-E	-	238'	NORTH	891'	WEST	LEA

¹² Dedicated Acres 160.00	¹³ Joint or Infill	¹⁴ Consolidation Code	¹⁵ Order No.
--	-------------------------------	----------------------------------	-------------------------

No allowable will be assigned to this completion until all interests have been consolidated or a non-standard unit has been approved by the division.

X=747271.10
Y=430562.77
X=748591.01
Y=430569.56



¹⁷OPERATOR CERTIFICATION

I hereby certify that the information contained herein is true and complete to the best of my knowledge and belief, and that this organization either owns a working interest or unleased mineral interest in the land including the proposed bottom hole location or has a right to drill this well at this location pursuant to a contract with an owner of such a mineral or working interest, or to a voluntary pooling agreement or a compulsory pooling order heretofore entered by the division.

Stan Wagner 6/30/15
Signature Date

Stan Wagner
Printed Name

E-mail Address

¹⁸SURVEYOR CERTIFICATION

I hereby certify that the well location shown on this plat was plotted from field notes of actual surveys made by me or under my supervision, and that the same is true to the best of my belief.

Date of Survey
Signature and Seal of Professional Surveyor

06/23/2015
MICHAEL B. BROWN
NEW MEXICO
18329
PROFESSIONAL SURVEYOR
Certificate Number

FEB 05 2016

dy

HOBBS OCD

JAN 4 2016

RECEIVED

SCALE: 1" = 1000'

0' 500' 1000'

SECTION 36, TOWNSHIP 24-S, RANGE 33-E, N.M.P.M.
LEA COUNTY, NEW MEXICOFND. BRASS CAP.
U.S. G.L.O. SUR.
1913FND. BRASS CAP.
U.S. G.L.O. SUR.
1913FND. BRASS CAP.
U.S. G.L.O. SUR.
1913FND. BRASS CAP.
U.S. G.L.O. SUR.
1913

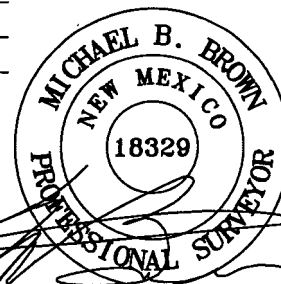
BOTTOM HOLE LOCATION
NEW MEXICO EAST
NAD 1927
X=748164
Y=430329
LAT.: N 32.1805484
LONG.: W 103.5312263
MD=17366'

LOWER MOST PERFORATION
NEW MEXICO EAST
NAD 1927
X=748189
Y=430081
LAT.: N 32.1798646
LONG.: W 103.5311507
MD= 17261'

UPPER MOST PERFORATION
NEW MEXICO EAST
NAD 1927
X=748204
Y=425672
LAT.: N 32.1677466
LONG.: W 103.5312105
MD= 12827'

SURFACE LOCATION
NEW MEXICO EAST
NAD 1927
X=747822
Y=425505
LAT.: N 32.1672956
LONG.: W 103.5324477

POINT	UTM ZONE 13 COORDINATES	
SHL	X=2094403.457	Y=11678896.474
UMP	X=2094783.971	Y=11679065.721
LMP	X=2094742.306	Y=11683473.357
BHL	X=2094715.529	Y=11683721.740



Michael Blake Brown, P.S. No. 18329
DECEMBER 17, 2015



TOPOGRAPHIC
LOYALTY INNOVATION LEGACY

1400 EVERMAN PARKWAY, Ste. 197 • FT. WORTH, TEXAS 76140
TELEPHONE: (817) 744-7512 • FAX (817) 744-7548
2903 NORTH BIG SPRING • MIDLAND, TEXAS 79705
TELEPHONE: (432) 682-1653 OR (800) 767-1653 • FAX (432) 682-1743
WWW.TOPOGRAPHIC.COM

EOG resources, Inc.

DRAGON 36 STATE #705H
AS-COMPLETED

REVISION:

INT DATE

DATE: 11/17/2015

FILE:AD_DRAGON36STATE_705H

DRAWN BY: A.V.F.

SHEET: 1 OF 1

NOTES:

1. ORIGINAL DOCUMENT SIZE: 8.5" X 11"
2. ALL BEARINGS, DISTANCES, AND COORDINATE VALUES CONTAINED HEREIN ARE GRID BASED UPON THE NEW MEXICO STATE PLANE COORDINATE SYSTEM, EAST ZONE, U.S. SURVEY FEET, NORTH AMERICAN DATUM 1927.
3. THIS EASEMENT/SERVITUDE LOCATION SHOWN HEREON HAS BEEN SURVEYED ON THE GROUND UNDER MY SUPERVISION AND PREPARED ACCORDING TO THE EVIDENCE FOUND AT THE TIME OF SURVEY, AND DATA PROVIDED BY EOG RESOURCES, INC. THIS CERTIFICATION IS MADE AND LIMITED TO THOSE PERSONS OR ENTITIES SHOWN ON THE FACE OF THIS PLAT AND IS NON-TRANSFERABLE. THIS SURVEY IS CERTIFIED FOR THIS TRANSACTION ONLY.