

District I  
 1625 N. French Dr., Hobbs, NM 88240  
 Phone: (575) 393-6161 Fax: (575) 393-0720  
 District II  
 911 S. First St., Artesia, NM 88210  
 Phone: (575) 748-1283 Fax: (575) 748-9720  
 District III  
 1000 Rio Brazos Road, Aztec, NM 87410  
 Phone: (505) 334-6178 Fax: (505) 334-6170  
 District IV  
 1220 S. St. Francis Dr., Santa Fe, NM 87505  
 Phone: (505) 476-3460 Fax: (505) 476-3462

State of New Mexico  
 Energy, Minerals & Natural Resources Department  
 OIL CONSERVATION DIVISION  
 1220 South St. Francis Dr.  
 Santa Fe, NM 87505

Form C-102  
 Revised August 1, 2011  
 Submit one copy to appropriate  
 District Office

FEB 10 2016

☒ AMENDED REPORT

WELL LOCATION AND ACREAGE DEDICATION PLAT

<sup>1</sup> API Number 30-025-42217		<sup>2</sup> Pool Code 97899		<sup>3</sup> Pool Name WC-025 G-06 S253206M; Bone Spring	
<sup>4</sup> Property Code 313839		<sup>5</sup> Property Name CHINCOTEAGUE 32 STATE COM			<sup>6</sup> Well Number 4H
<sup>7</sup> OGRID No. 6137		<sup>8</sup> Operator Name DEVON ENERGY PRODUCTION COMPANY, L.P.			<sup>9</sup> Elevation 3470.9
<sup>10</sup> Surface Location					
UL or lot no. O	Section 32	Township 24 S	Range 32 E	Lot Idn	Feet from the 200
				North/South line SOUTH	Feet from the 2600
				East/West line EAST	County LEA
<sup>11</sup> Bottom Hole Location If Different From Surface					
UL or lot no. B	Section 32	Township 24 S	Range 32 E	Lot Idn	Feet from the 330
				North/South line NORTH	Feet from the 2610
				East/West line EAST	County LEA
<sup>12</sup> Dedicated Acres 160.00		<sup>13</sup> Joint or Infill		<sup>14</sup> Consolidation Code	
				<sup>15</sup> Order No.	

No allowable will be assigned to this completion until all interests have been consolidated or a non-standard unit has been approved by the division.

N89°21'27"E 2641.48 FT NW CORNER SEC. 32 LAT. = 32.1811326°N LONG. = 103.7052240°W NMSP EAST (FT) N = 430198.05 E = 735661.86		N89°21'41"E 2641.64 FT N Q CORNER SEC. 32 LAT. = 32.1811714°N LONG. = 103.6966883°W NMSP EAST (FT) N = 430227.67 E = 738302.60		NE CORNER SEC. 32 LAT. = 32.1812090°N LONG. = 103.6881520°W NMSP EAST (FT) N = 430257.10 E = 740943.50	
N00°28'37"W 2639.18 FT W Q CORNER SEC. 32 LAT. = 32.1738796°N LONG. = 103.7052028°W NMSP EAST (FT) N = 427559.54 E = 735683.83		NOTE: LATITUDE AND LONGITUDE COORDINATES ARE SHOWN USING THE NORTH AMERICAN DATUM OF 1983 (NAD83). LISTED NEW MEXICO STATE PLANE EAST COORDINATES ARE GRID (NAD83). BASIS OF BEARING AND DISTANCES USED ARE NEW MEXICO STATE PLANE EAST COORDINATES MODIFIED TO THE SURFACE.		BOTTOM OF HOLE LAT. = 32.1802649°N LONG. = 103.6965844°W NMSP EAST (FT) N = 429898.10 E = 738316.69	
N00°27'14"W 2639.49 FT SW CORNER SEC. 32 LAT. = 32.1668258°N LONG. = 103.7051850°W NMSP EAST (FT) N = 424920.70 E = 735704.73		CHINCOTEAGUE "32" STATE COM 4H ELEV. = 3470.9' LAT. = 32.1672052°N (NAD83) LONG. = 103.6965249°W NMSP EAST (FT) N = 425147.25 E = 738383.22		E Q CORNER SEC. 32 LAT. = 32.1739477°N LONG. = 103.6881392°W NMSP EAST (FT) N = 427615.56 E = 740963.30	
S89°22'46"W 2459.46 FT N Q CORNER SEC. 5 LAT. = 32.1666593°N LONG. = 103.6972387°W NMSP EAST (FT) N = 424947.33 E = 738163.51		S Q CORNER SEC. 32 LAT. = 32.1668550°N LONG. = 103.6966583°W NMSP EAST (FT) N = 424946.83 E = 738343.11		SE CORNER SEC. 32 LAT. = 32.1666862°N LONG. = 103.6881230°W NMSP EAST (FT) N = 424973.91 E = 740984.15	
S89°26'16"W 2480.08 FT S89°01'32"W 161.68 FT		S00°27'08"E 2642.30 FT S00°25'46"E 2642.20 FT		S00°27'08"E 2642.30 FT S00°25'46"E 2642.20 FT	

**OPERATOR CERTIFICATION**

I hereby certify that the information contained herein is true and complete to the best of my knowledge and belief, and that this organization either owns a working interest or unleased mineral interest in the land including the proposed bottom hole location or has a right to drill this well at this location pursuant to a contract with an owner of such a mineral or working interest, or to a voluntary pooling agreement or a compulsory pooling order heretofore entered by the well owner.

Signature: Linda Good Date: 2/10/2016

Printed Name: Linda Good

E-mail Address: linda.good@dvn.com

**SURVEYOR CERTIFICATION**

I hereby certify that the well location shown on this plat was plotted from field notes of actual surveys made by me or under my supervision, and that the same is true and correct to the best of my belief.

Signature: MON F. JARAMILLO Date of Survey: FEBRUARY 10, 2016

Certificate Number: FILED MON F. JARAMILLO, PLS 12797

SURVEY NO. 33468

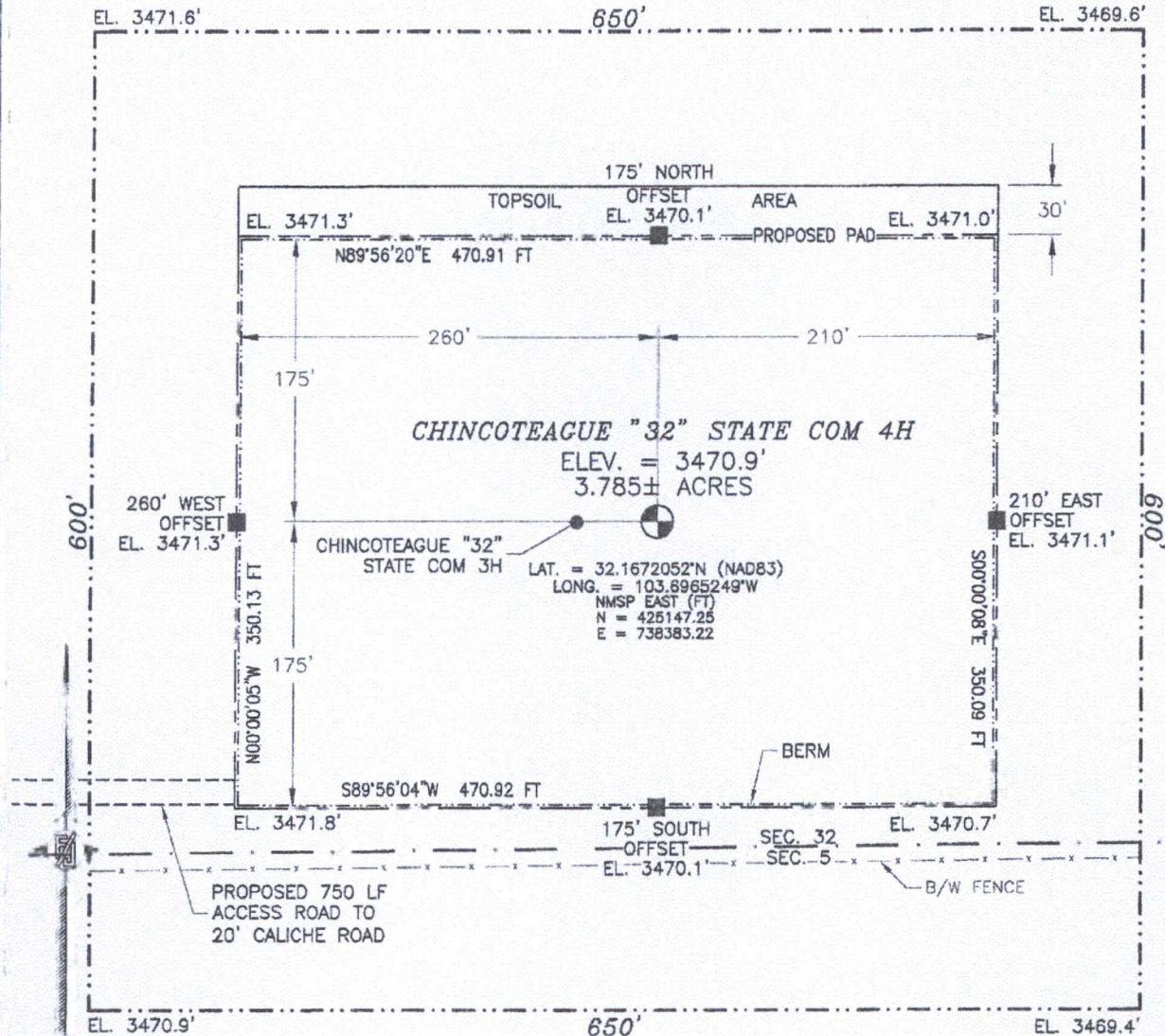
AMENDED

FEB 10 2016



SECTION 32, TOWNSHIP 24 SOUTH, RANGE 32 EAST, N.M.P.M.  
LEA COUNTY, STATE OF NEW MEXICO  
**SITE MAP**

NOTE: LATITUDE AND LONGITUDE COORDINATES ARE SHOWN USING THE NORTH AMERICAN DATUM OF 1983 (NAD83). LISTED NEW MEXICO STATE PLANE EAST COORDINATES ARE GRID (NAD83). BASIS OF BEARING AND DISTANCES USED ARE NEW MEXICO STATE PLANE EAST COORDINATES MODIFIED TO THE SURFACE



010 50 100 200

SCALE 1" = 100'  
DIRECTIONS TO LOCATION

FROM STATE HIGHWAY 128 AND CR 1 (ORLA ROAD) GO SOUTH ON CR 1 2.4 MILES, TURN RIGHT ON CALICHE ROAD AND GO WEST 1.0 MILES, TURN LEFT AND GO SOUTH 0.5 MILES, BEND RIGHT AND GO WEST 0.1 MILES, BEND LEFT AND GO SOUTHWEST 470', BEND RIGHT AND GO WEST 0.36 MILES, TURN LEFT AND GO SOUTH-SOUTHWEST 0.43 MILES TO A PROPOSED ROAD SURVEY AND FOLLOW FLAGS EAST 750' TO THE PROPOSED SOUTHWEST PAD CORNER FOR THIS LOCATION.

DEVON ENERGY PRODUCTION COMPANY, L.P.  
**CHINCOTEAGUE "32" STATE COM 4H**  
LOCATED 200 FT. FROM THE SOUTH LINE  
AND 2600 FT. FROM THE EAST LINE OF  
SECTION 32, TOWNSHIP 24 SOUTH,  
RANGE 32 EAST, N.M.P.M.  
LEA COUNTY, STATE OF NEW MEXICO

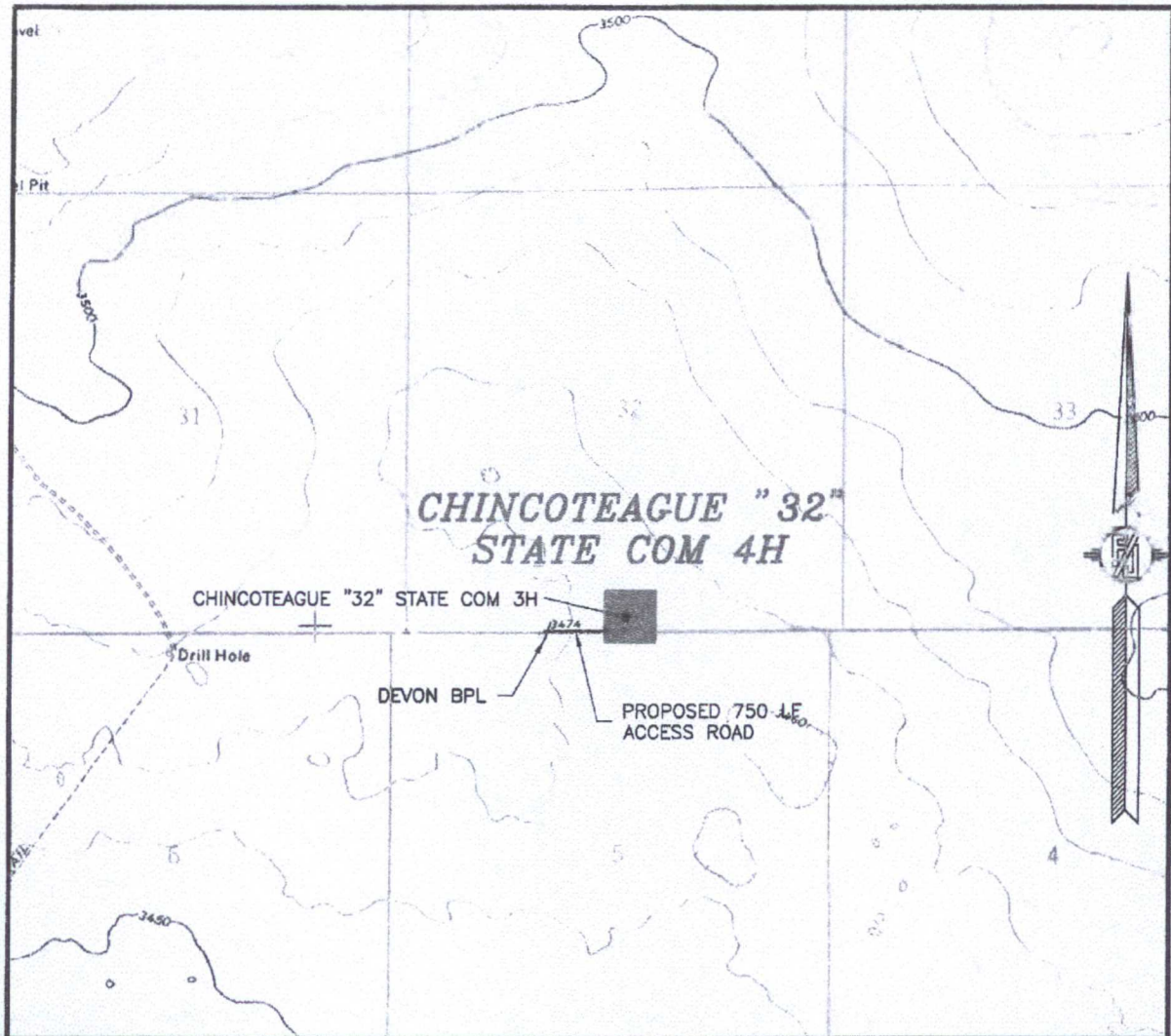
FEBRUARY 4, 2016

SURVEY NO. 3346B

MADRON SURVEYING, INC. 301 SOUTH CANAL (575) 234-3341 CARLSBAD, NEW MEXICO



SECTION 32, TOWNSHIP 24 SOUTH, RANGE 32 EAST, N.M.P.M.  
LEA COUNTY, STATE OF NEW MEXICO  
LOCATION VERIFICATION MAP



USGS QUAD MAP:  
PADUCA BREAKS NW

NOT TO SCALE

DEVON ENERGY PRODUCTION COMPANY, L.P.  
**CHINCOTEAGUE "32" STATE COM 4H**  
LOCATED 200 FT. FROM THE SOUTH LINE  
AND 2600 FT. FROM THE EAST LINE OF  
SECTION 32, TOWNSHIP 24 SOUTH,  
RANGE 32 EAST, N.M.P.M.  
LEA COUNTY, STATE OF NEW MEXICO

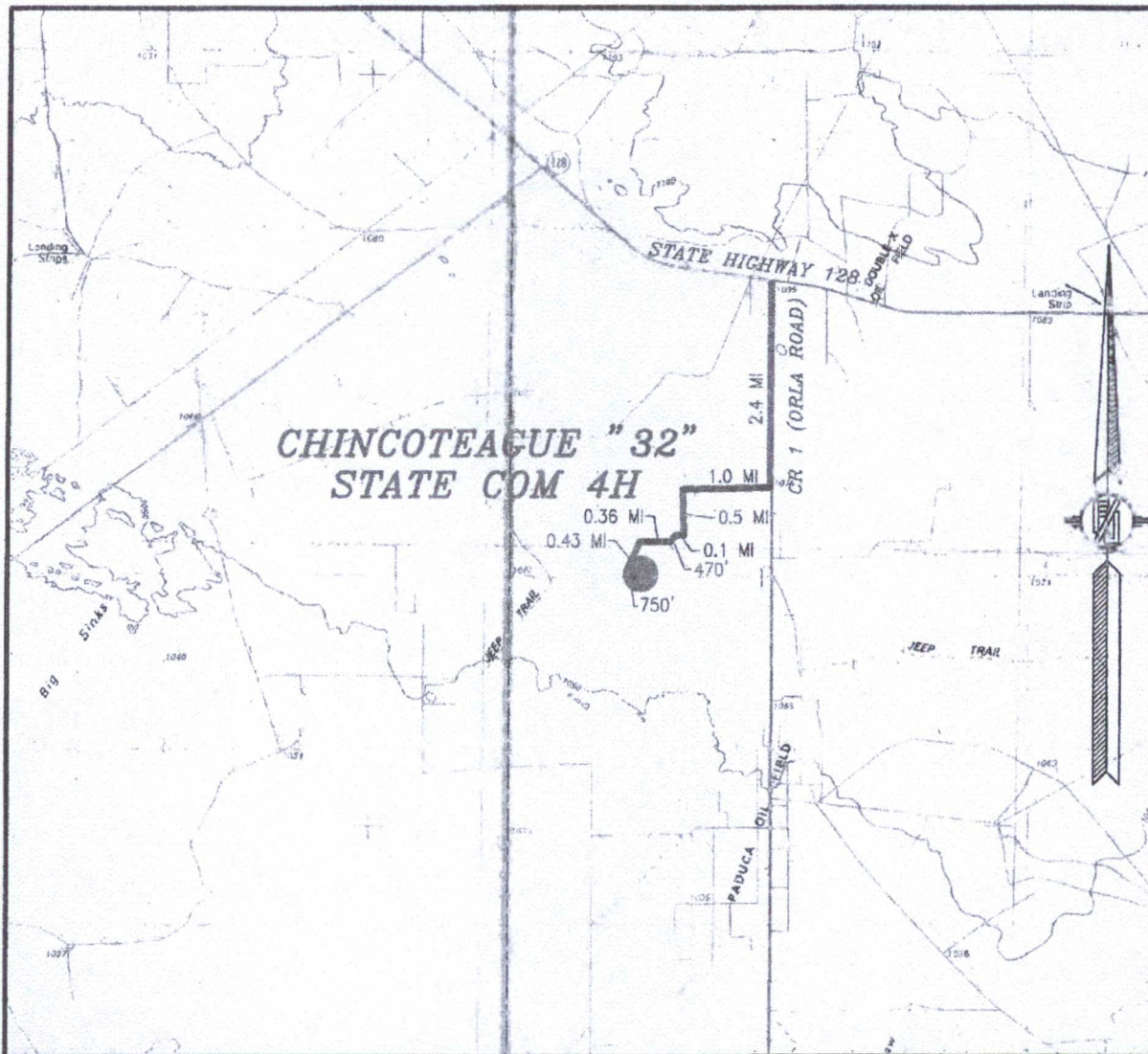
FEBRUARY 4, 2016

SURVEY NO. 3346B

MADRON SURVEYING, INC. 301 SOUTH CANAL (575) 234-3341 CARLSBAD, NEW MEXICO



SECTION 32, TOWNSHIP 24 SOUTH, RANGE 32 EAST, N.M.P.M.  
LEA COUNTY, STATE OF NEW MEXICO  
VICINITY MAP



DISTANCES IN MILES

NOT TO SCALE

DEVON ENERGY PRODUCTION COMPANY, L.P.

**CHINCOTEAGUE "32" STATE COM 4H**

LOCATED 200 FT. FROM THE SOUTH LINE

AND 2600 FT. FROM THE EAST LINE OF

SECTION 32, TOWNSHIP 24 SOUTH,

RANGE 32 EAST, N.M.P.M.

LEA COUNTY, STATE OF NEW MEXICO

**DIRECTIONS TO LOCATION**

FROM STATE HIGHWAY 128 AND CR 1 (ORLA ROAD) GO SOUTH ON CR 1 2.4 MILES, TURN RIGHT ON CALICHE ROAD AND GO WEST 1.0 MILES, TURN LEFT AND GO SOUTH 0.5 MILES, BEND RIGHT AND GO WEST 0.1 MILES, BEND LEFT AND GO SOUTHWEST 470', BEND RIGHT AND GO WEST 0.36 MILES, TURN LEFT AND GO SOUTH-SOUTHWEST 0.43 MILES TO A PROPOSED ROAD SURVEY AND FOLLOW FLAGS EAST 750' TO THE PROPOSED SOUTHWEST PAD CORNER FOR THIS LOCATION.

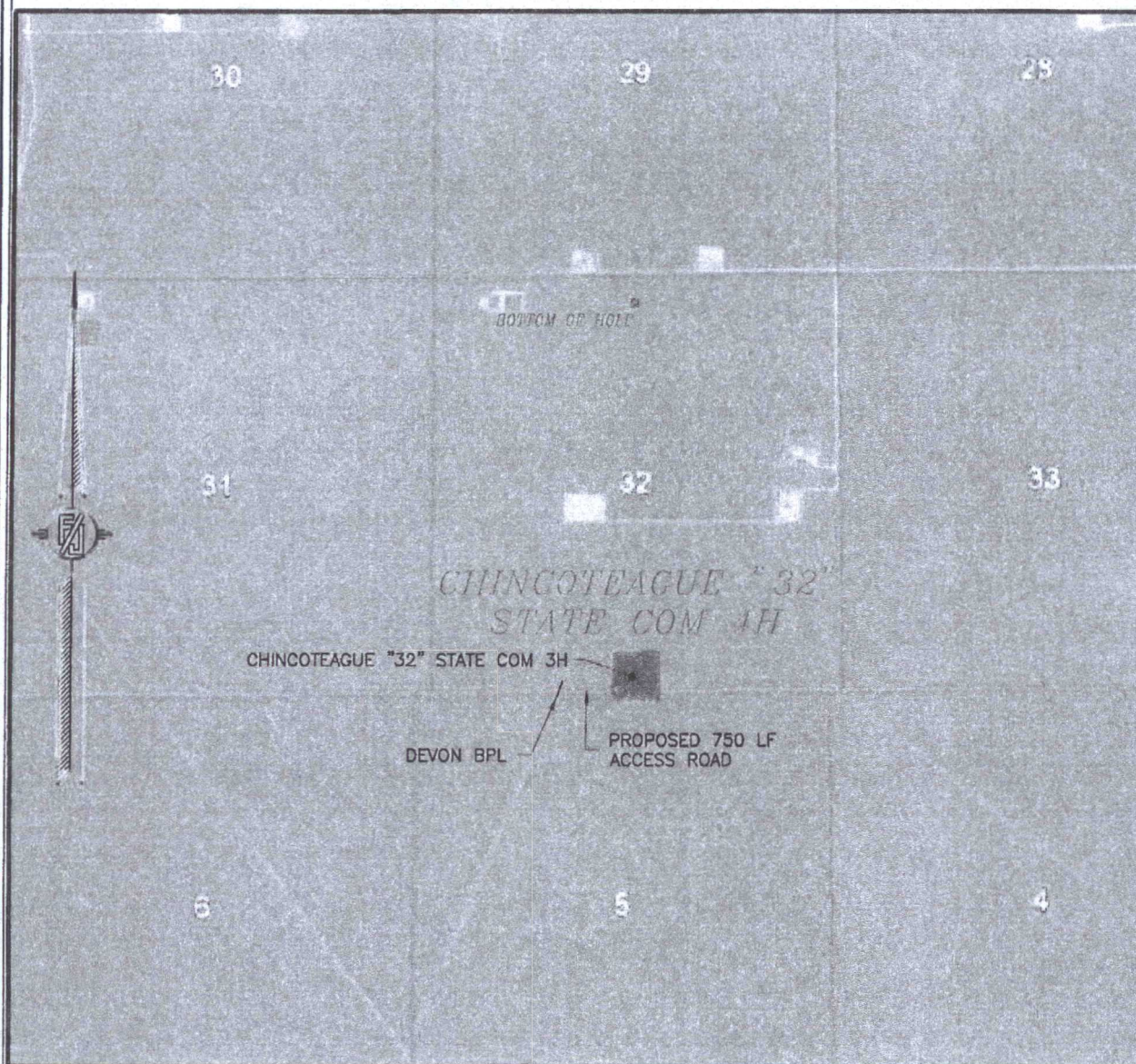
FEBRUARY 4, 2016

SURVEY NO. 3346B

MADRON SURVEYING, INC. 301 SOUTH CANAL (575) 234-3341 CARLSBAD, NEW MEXICO



SECTION 32, TOWNSHIP 24 SOUTH, RANGE 32 EAST, N.M.P.M.  
LEA COUNTY, STATE OF NEW MEXICO  
AERIAL PHOTO



NOT TO SCALE  
AERIAL PHOTO:  
GOOGLE EARTH  
FEBRUARY 2014

DEVON ENERGY PRODUCTION COMPANY, L.P.  
**CHINCOTEAGUE "32" STATE COM 4H**  
LOCATED 200 FT. FROM THE SOUTH LINE  
AND 2600 FT. FROM THE EAST LINE OF  
SECTION 32, TOWNSHIP 24 SOUTH,  
RANGE 32 EAST, N.M.P.M.  
LEA COUNTY, STATE OF NEW MEXICO

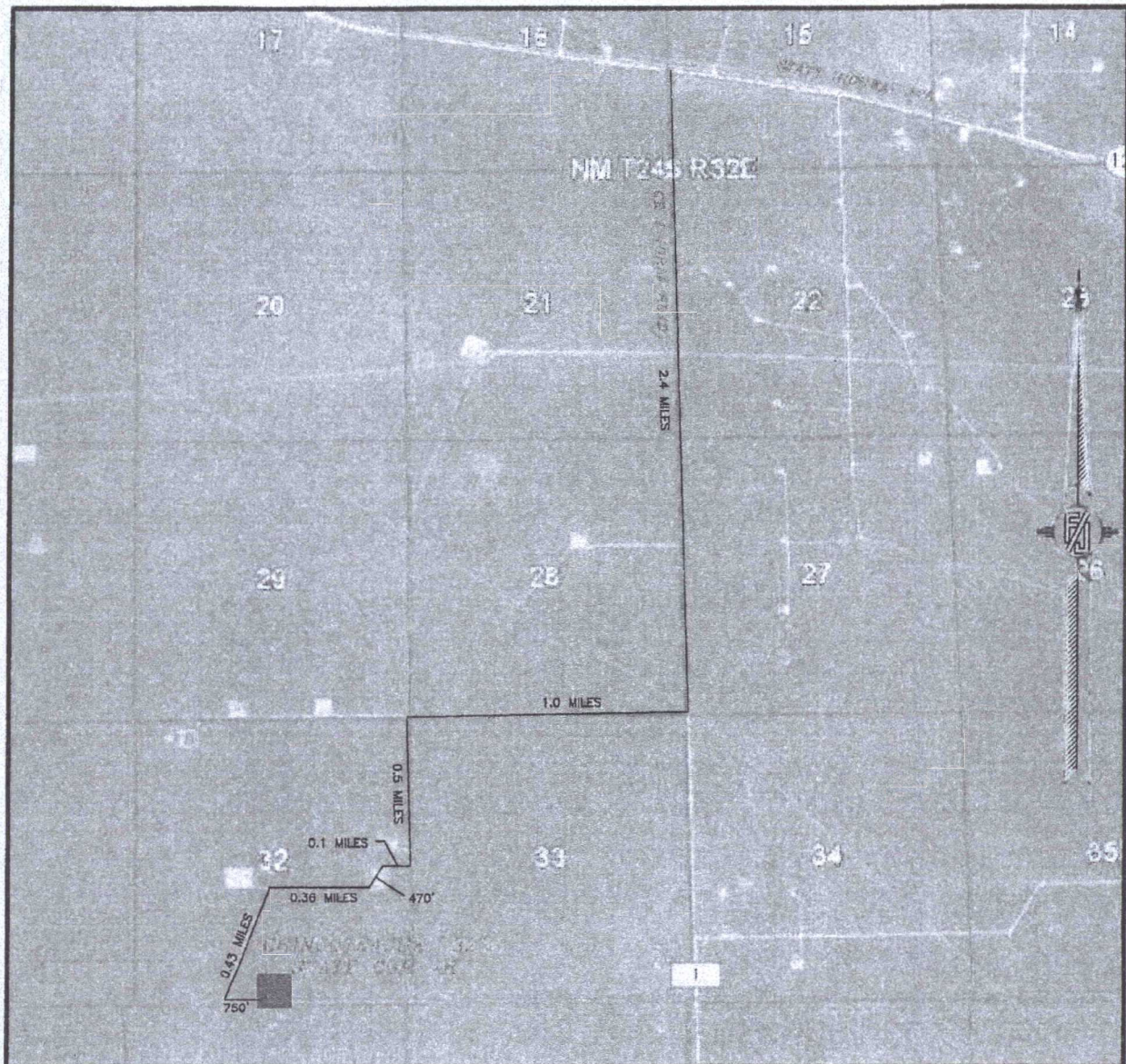
FEBRUARY 4, 2016

SURVEY NO. 3346B

MADRON SURVEYING, INC. 301 SOUTH CANAL (575) 234-3341 CARLSBAD, NEW MEXICO



SECTION 32, TOWNSHIP 24 SOUTH, RANGE 32 EAST, N.M.P.M.  
LEA COUNTY, STATE OF NEW MEXICO  
ACCESS AERIAL ROUTE MAP



NOT TO SCALE  
AERIAL PHOTO:  
GOOGLE EARTH  
FEBRUARY 2014

DEVON ENERGY PRODUCTION COMPANY, L.P.  
**CHINCOTEAGUE "32" STATE COM 4H**  
LOCATED 200 FT. FROM THE SOUTH LINE  
AND 2600 FT. FROM THE EAST LINE OF  
SECTION 32, TOWNSHIP 24 SOUTH,  
RANGE 32 EAST, N.M.P.M.  
LEA COUNTY, STATE OF NEW MEXICO

FEBRUARY 4, 2016

SURVEY NO. 3346B

MADRON SURVEYING, INC. 301 SOUTH CANAL (575) 234-3341 CARLSBAD, NEW MEXICO