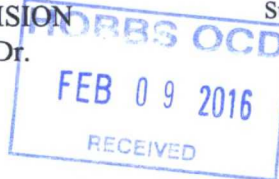


District I
1625 N. French Dr., Hobbs, NM 88240
Phone: (575) 393-6161 Fax: (575) 393-0720
District II
811 S. First St., Artesia, NM 88210
Phone: (575) 748-1283 Fax: (575) 748-9720
District III
1000 Rio Brazos Road, Aztec, NM 87410
Phone: (505) 334-6178 Fax: (505) 334-6170
District IV
1220 S. St. Francis Dr., Santa Fe, NM 87505
Phone: (505) 476-3460 Fax: (505) 476-3462

State of New Mexico
Energy, Minerals & Natural Resources Department
OIL CONSERVATION DIVISION
1220 South St. Francis Dr.
Santa Fe, NM 87505

Form C-102
Revised August 1, 2011
Submit one copy to appropriate
District Office

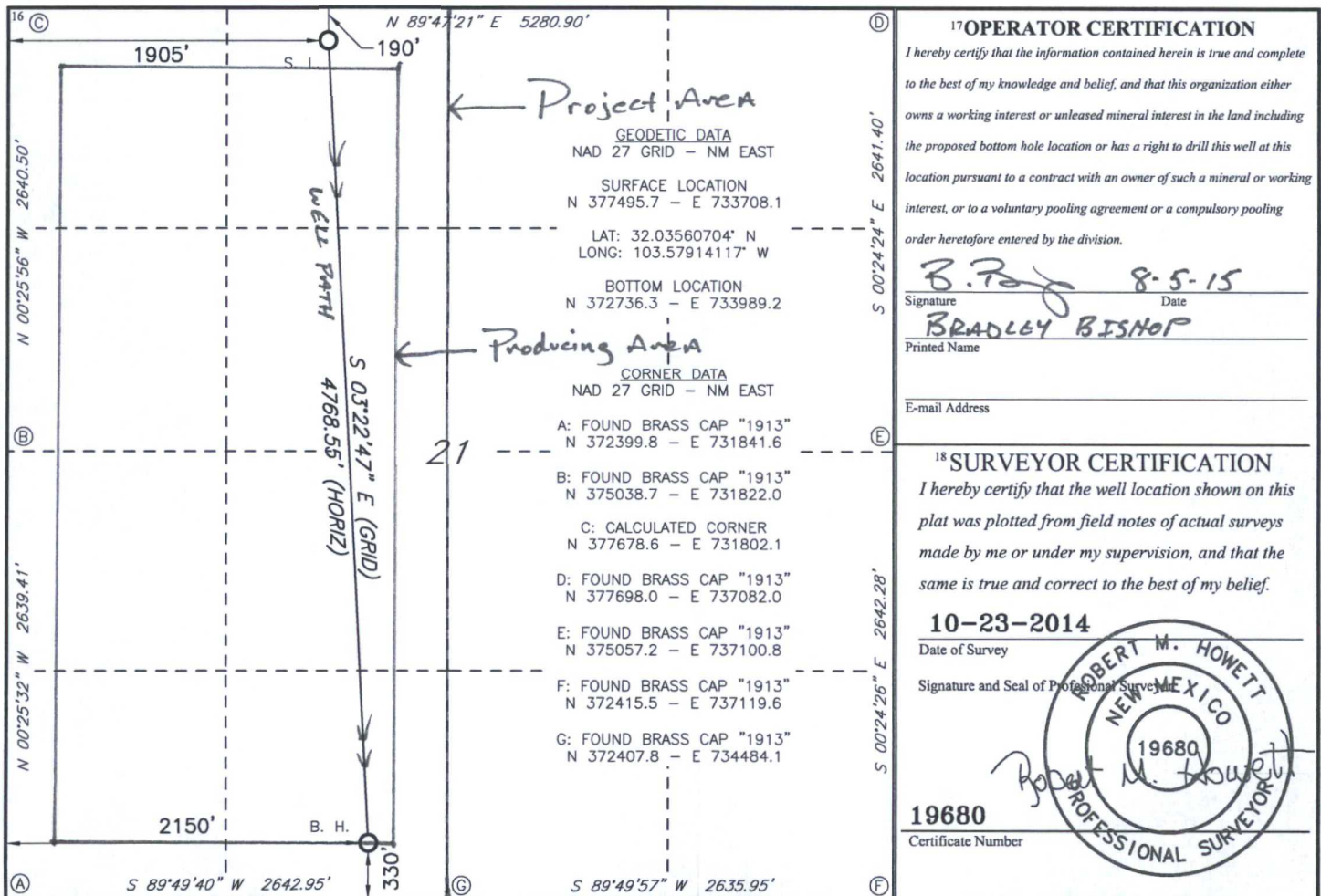


☐ AMENDED REPORT

WELL LOCATION AND ACREAGE DEDICATION PLAT

¹ API Number 30-025 43072		² Pool Code 84410		³ Pool Name SALADO DRAW WOLF CAMP GAS	
⁴ Property Code 315976		⁵ Property Name EL MAR 21 W1CN FED COM			⁶ Well Number 3H
⁷ GRID NO. 14744		⁸ Operator Name MEWBOURNE OIL COMPANY			⁹ Elevation 3274'
¹⁰ Surface Location					
UL or lot no. C	Section 21	Township 26S	Range 33E	Lot Idn	Feet from the 190
		North/South line NORTH		Feet From the 1905	East/West line WEST
				County LEA	
¹¹ Bottom Hole Location If Different From Surface					
UL or lot no. N	Section 21	Township 26S	Range 33E	Lot Idn	Feet from the 330
		North/South line SOUTH		Feet from the 2150	East/West line WEST
				County LEA	
¹² Dedicated Acres 320	¹³ Joint or Infill	¹⁴ Consolidation Code	¹⁵ Order No.		

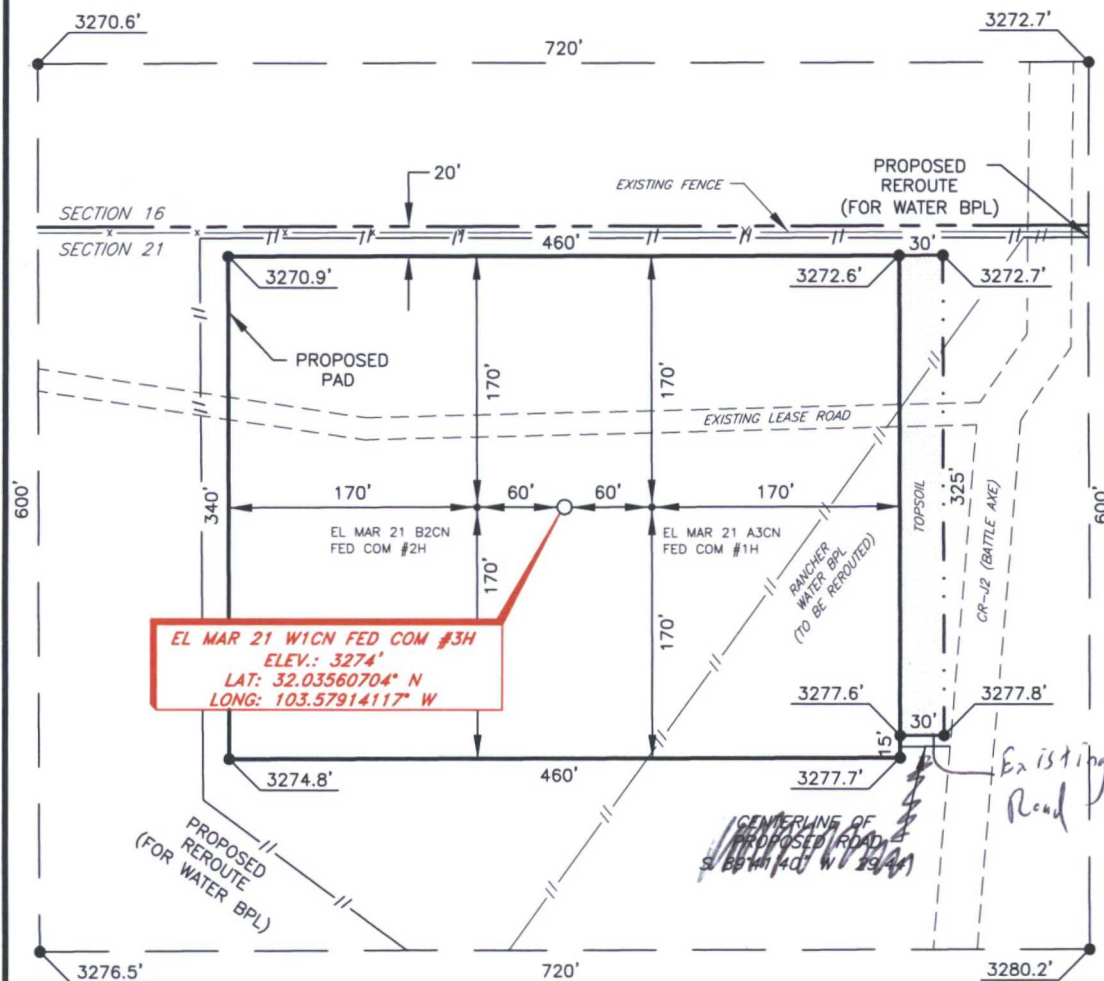
No allowable will be assigned to this completion until all interest have been consolidated or a non-standard unit has been approved by the division.



RRC - Firm No.: TX 10193838 NM 4655451 - Job No.: LS140428

FEB 11 2016

MEWBOURNE OIL COMPANY
EL MAR 21 W1CN FED COM #3H
(190' FNL & 1905' FWL)
SECTION 21, T26S, R36E
N. M. P. M., LEA CO., NEW MEXICO



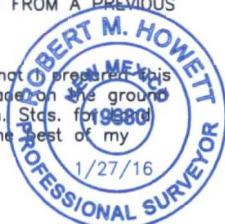
DIRECTIONS TO LOCATION

From the intersection of CR-J1 (Orla) and CR-J2 (Battle Axe),
 Go East on CR-J2 turning North approx. 9.1 miles to a an existing lease;
 Turn left and go West approx. 290 feet to the location on the left.

THIS IS NOT A BOUNDARY SURVEY, APPARENT PROPERTY CORNERS AND PROPERTY LINES ARE SHOWN FOR INFORMATION ONLY. BOUNDARY DATA IS SHOWN FROM A PREVIOUS SURVEY REFERENCED HEREON.

I, R. M. Howett, a N. M. Professional Surveyor, hereby certify that I prepared this unclassified survey of a well location from an actual survey made on the ground under my direct supervision, said survey and plat meet the Min. Stas. for 1988 Surveying in the State of N. M. and are true and correct to the best of my knowledge and belief.

Robert M. Howett
 Robert M. Howett NM PS 19680



SCALE: 1" = 100'
 0 50 100
 BEARINGS ARE
 NAD 27 GRID - NM EAST
 DISTANCES ARE
 GROUND.

Firm No.: TX 10193838 NM 4655451

Copyright 2014 - All Rights Reserved

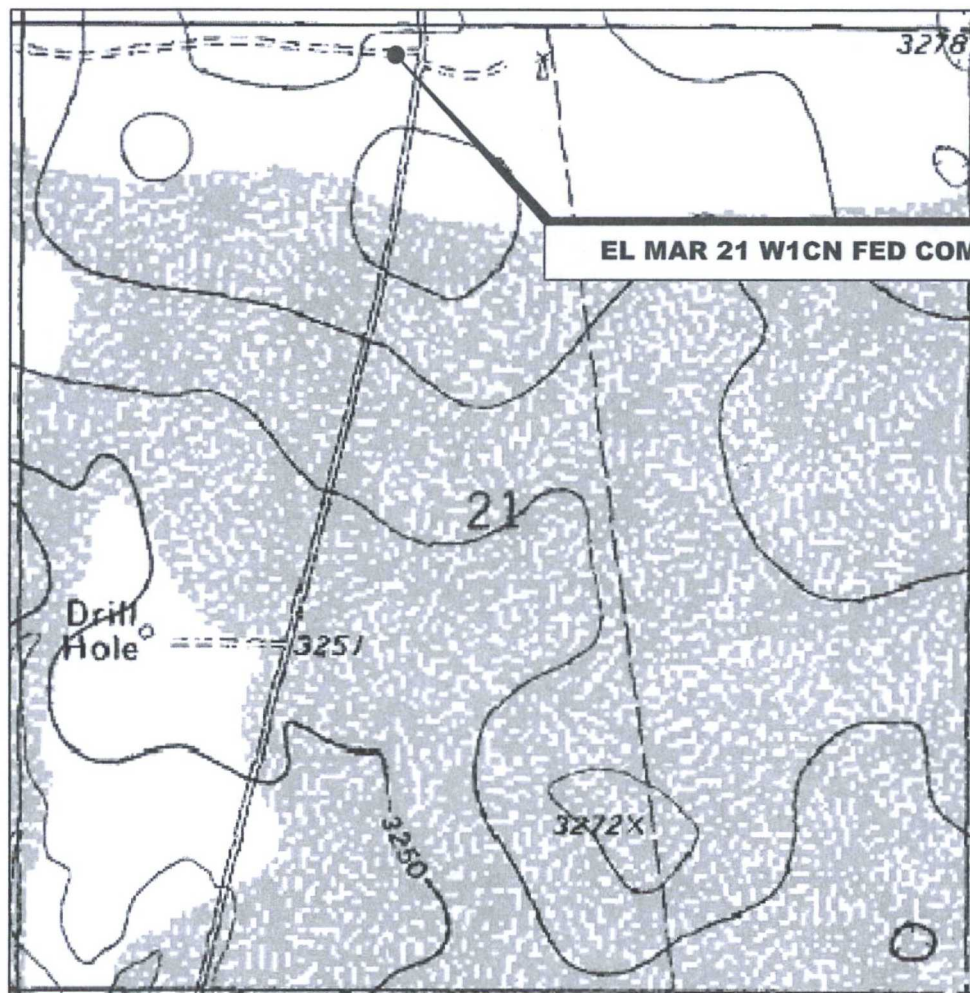
NO.	REVISION	DATE
JOB NO.:	LS140428	
DWG. NO.:	140428PAD	

RRC

308 W. BROADWAY ST., HOBBS, NM 88240 (575) 964-8200

SCALE: 1" = 100'
 DATE: 10-23-2014
 SURVEYED BY: BK/KR
 DRAWN BY: ARJ
 APPROVED BY: RMH
 SHEET : 1 OF 1

LOCATION VERIFICATION MAP



*SECTION 21, TWP. 26 SOUTH, RGE. 33 EAST,
N. M. P. M., LEA CO., NEW MEXICO*

OPERATOR: Mewbourne Oil Company
LEASE: El Mar 21 W1CN Fed Com
WELL NO.: 3H
ELEVATION: 3274'

LOCATION: 190' FNL & 1905' FWL
CONTOUR INTERVAL: 10'
USGS TOPO. SOURCE MAP:
Paduca Breaks East, NM (1973)

Firm No.: TX 10193838 NM 4655451

Copyright 2014 - All Rights Reserved

NO.	REVISION	DATE
JOB NO.:	LS140428	
DWG. NO.:	140428LVM	

RRC

308 W. BROADWAY ST., HOBBS, NM 88240 (575) 964-8200

SCALE: 1"=1000'
DATE: 10-23-2014
SURVEYED BY: BK/KR
DRAWN BY: ARJ
APPROVED BY: RMH
SHEET : 1 OF 1

VICINITY MAP

NOT TO SCALE

EL MAR 21 W1CN FED COM #3H



SECTION 21, TWP. 26 SOUTH, RGE. 33 EAST,
N. M. P. M., LEA CO., NEW MEXICO

OPERATOR: Mewbourne Oil Company
LEASE: EI Mar 21 W1CN Fed Com
WELL NO.: 3H

LOCATION: 190' FNL & 1905' FWL
ELEVATION: 3274'

Firm No.: TX 10193838 NM 4655451

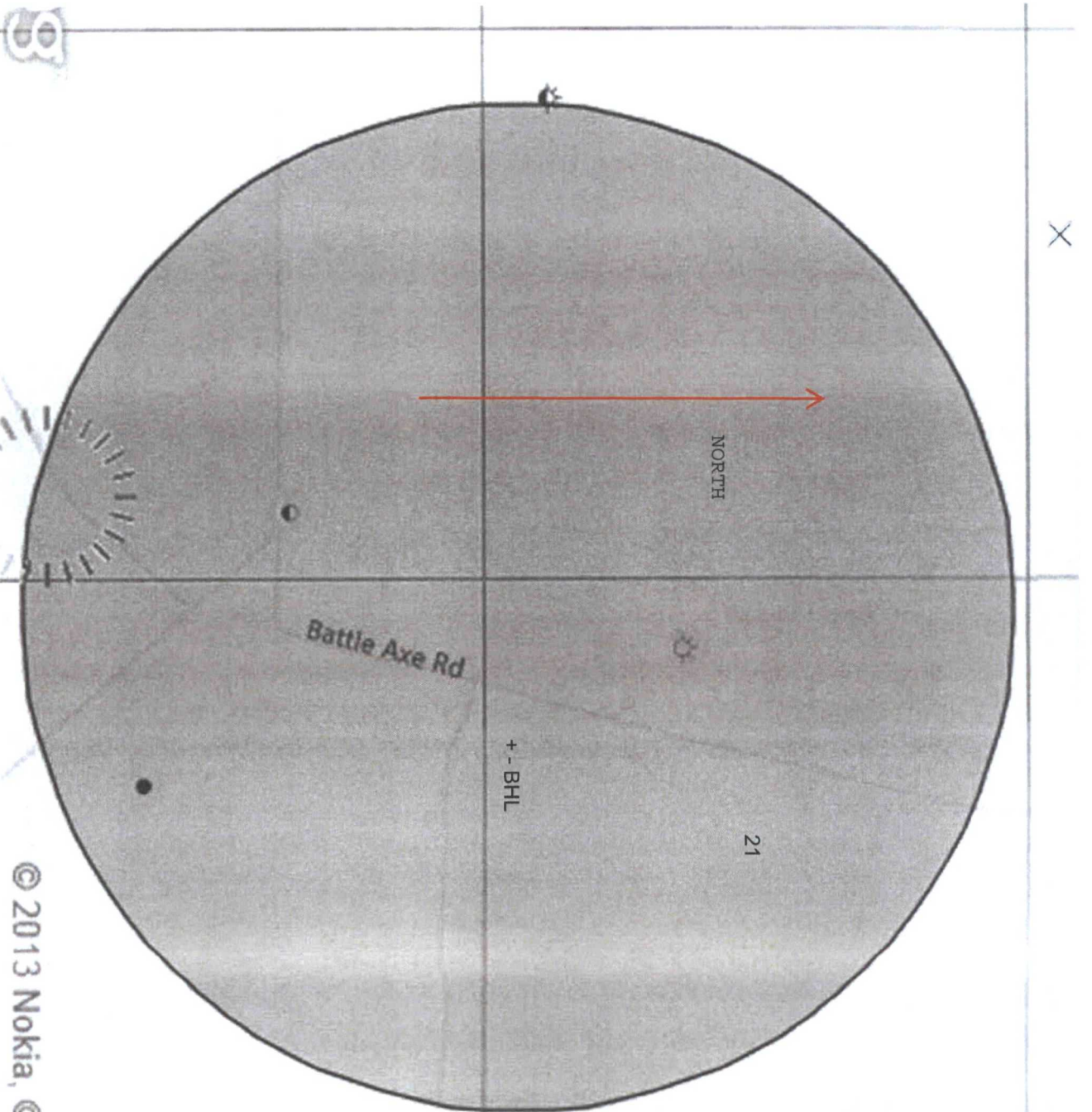
Copyright 2014 – All Rights Reserved

NO.	REVISION	DATE
JOB NO.: LS140428		
DWG. NO.: 140428VM		

RRC

308 W. BROADWAY ST., HOBBS, NM 88240 (575) 964-8200

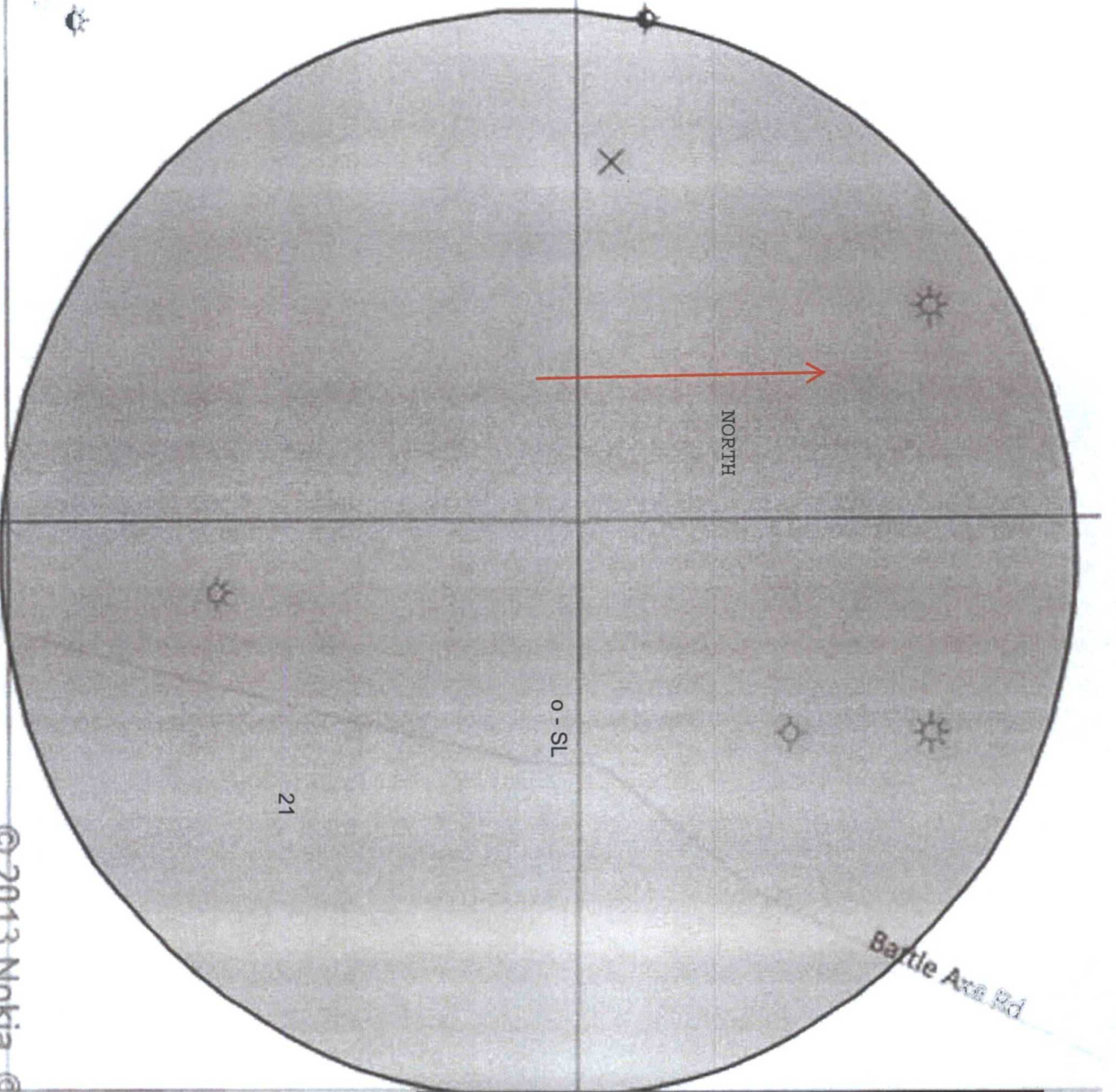
SCALE: NTS
DATE: 10-23-2014
SURVEYED BY: BK/KR
DRAWN BY: ARJ
APPROVED BY: RMH
SHEET : 1 OF 1



- o Drilling (Well Start)
- x Abandoned Location (Permit)
- * Gas Well
- Oil Well
- * Oil and Gas Well
- Other (Observation, etc)
- * Injection Well
- ◇ Suspended
- * Plugged Gas Well
- * Plugged Oil Well
- * Plugged Oil and Gas
- * Dry Hole (No Shows)
- * Dry Hole w/Gas Show
- * Dry Hole w/Oil Show
- * Dry Hole w/Oil and Gas Show

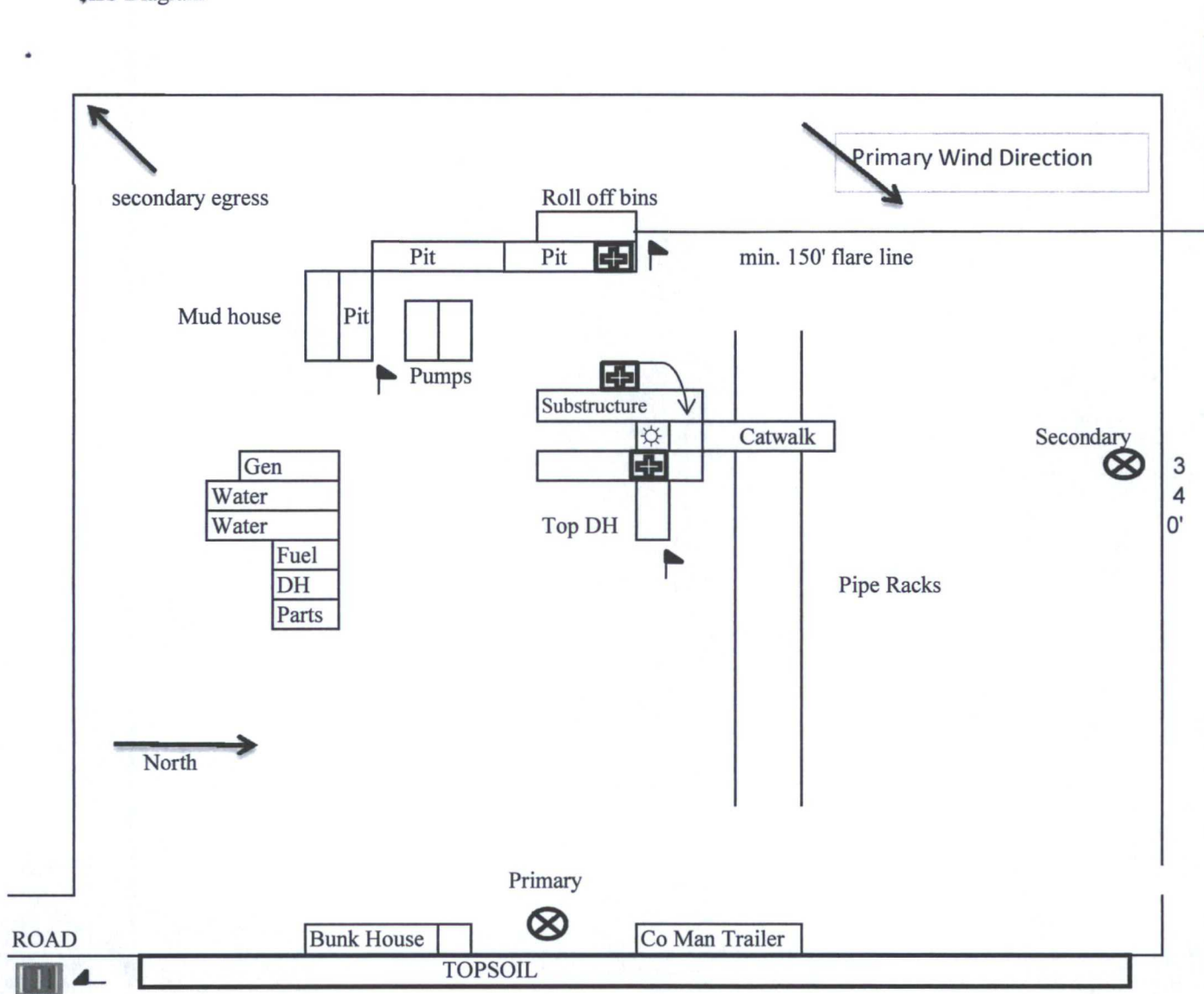
© 2013 Nokia, © A

- Drilling (Well Start)
- × Abandoned Location (Permit)
- ⚙ Gas Well
- Oil Well
- ⚙ Oil and Gas Well
- Other (Observation, etc)
- ⚙ Injection Well
- ◇ Suspended
- ⚙ Plugged Gas Well
- ⚙ Plugged Oil Well
- ⚙ Plugged Oil and Gas
- ◇ Dry Hole (No Shows)
- ◇ Dry Hole w/Gas Show
- ◇ Dry Hole w/Oil Show
- ◇ Dry Hole w/Oil and Gas Show



©2013 Nokia, ©AND

H2S Diagram



Mewbourne Oil Company
 El Mar 21 W1CN Fed Com #3H
 190' FNL & 1905' FWL
 Sec. 21 T26S R33E
 Lea County, NM



= Warning Signs



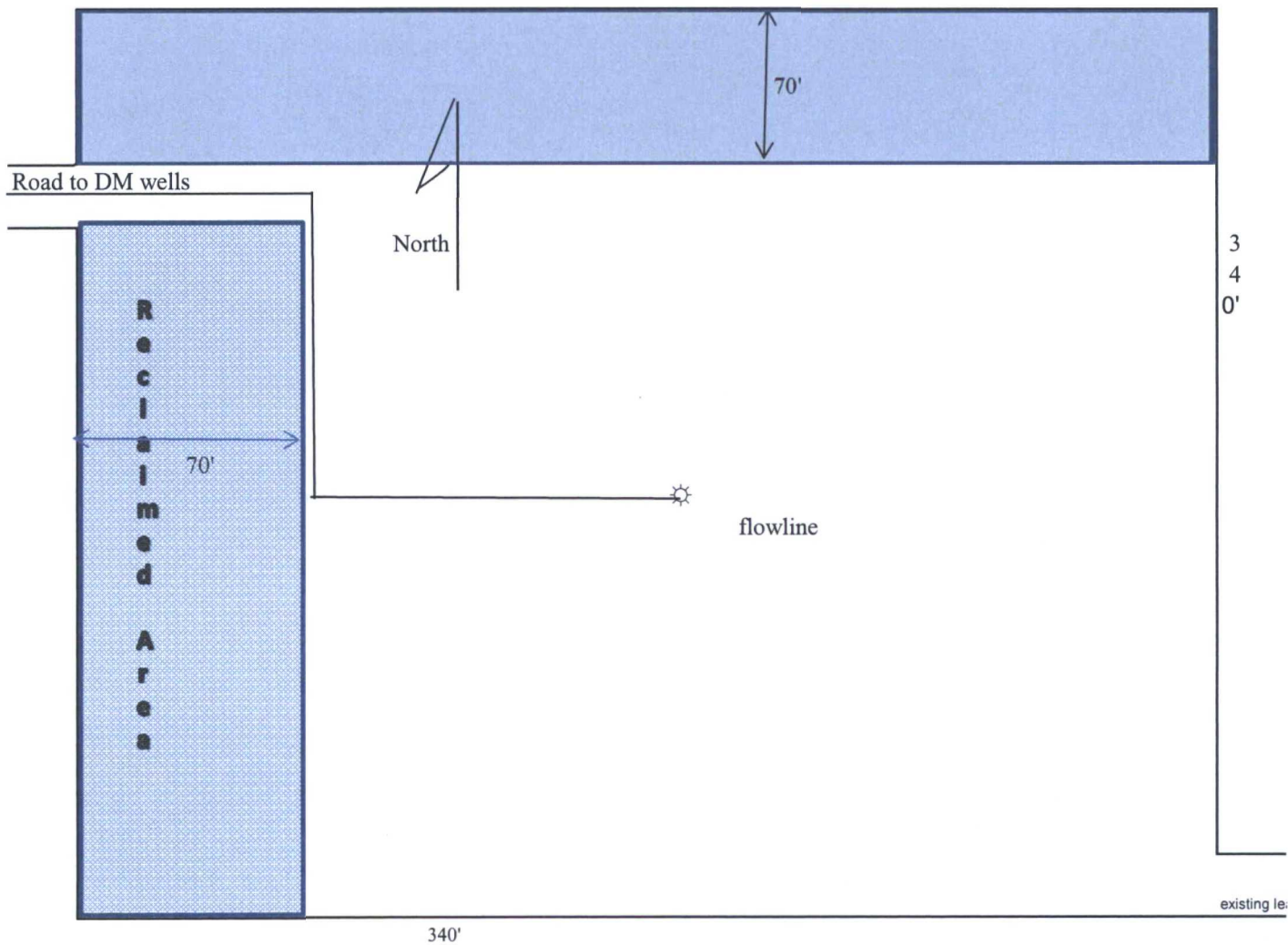
= Wind Markers



= H2S Monitors



= Safety Stations



Mewbourne Oil Company
El Mar 21 W1CN Fed Com #3H
190' FNL & 1905' FWL
Sec. 21 T26S R33E
Lea Co. NM

Flowline Route

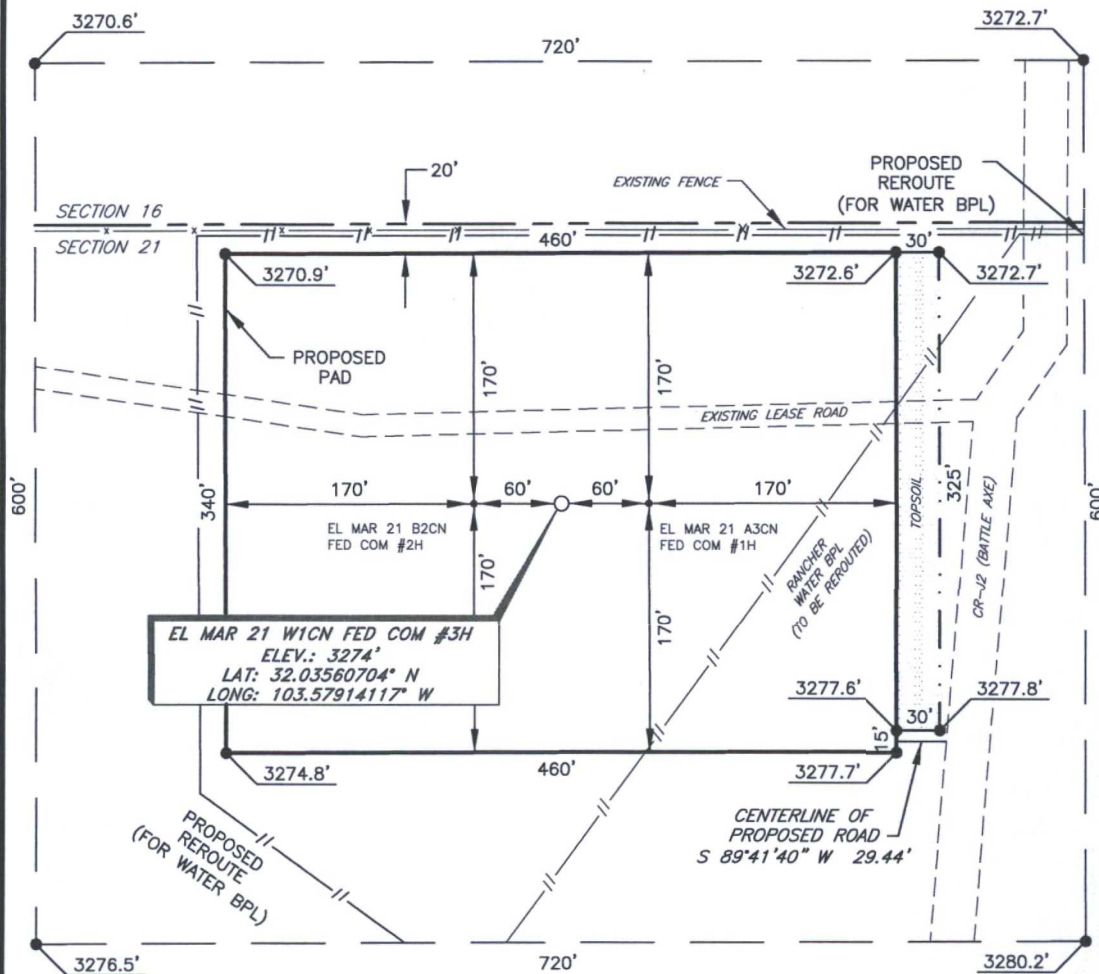
Flowline Route within
5' of existing lease
road.

EI Mar 21 DM #1H

EI Mar 21 A3CN Fed Com #1H

Google

MEWBOURNE OIL COMPANY
EL MAR 21 W1CN FED COM #3H
(190' FNL & 1905' FWL)
SECTION 21, T26S, R36E
N. M. P. M., LEA CO., NEW MEXICO



DIRECTIONS TO LOCATION

From the intersection of CR-J1 (Orla) and CR-J2 (Battle Axe),
 Go East on CR-J2 turning North approx. 9.1 miles to an existing lease;
 Turn left and go West approx. 3290 feet to the location on the left.

SCALE: 1" = 100'
 0 50 100
 BEARINGS ARE
 NAD 27 GRID - NM EAST
 DISTANCES ARE
 GROUND.

Firm No.: TX 10193838 NM 4655451

Copyright 2014 - All Rights Reserved

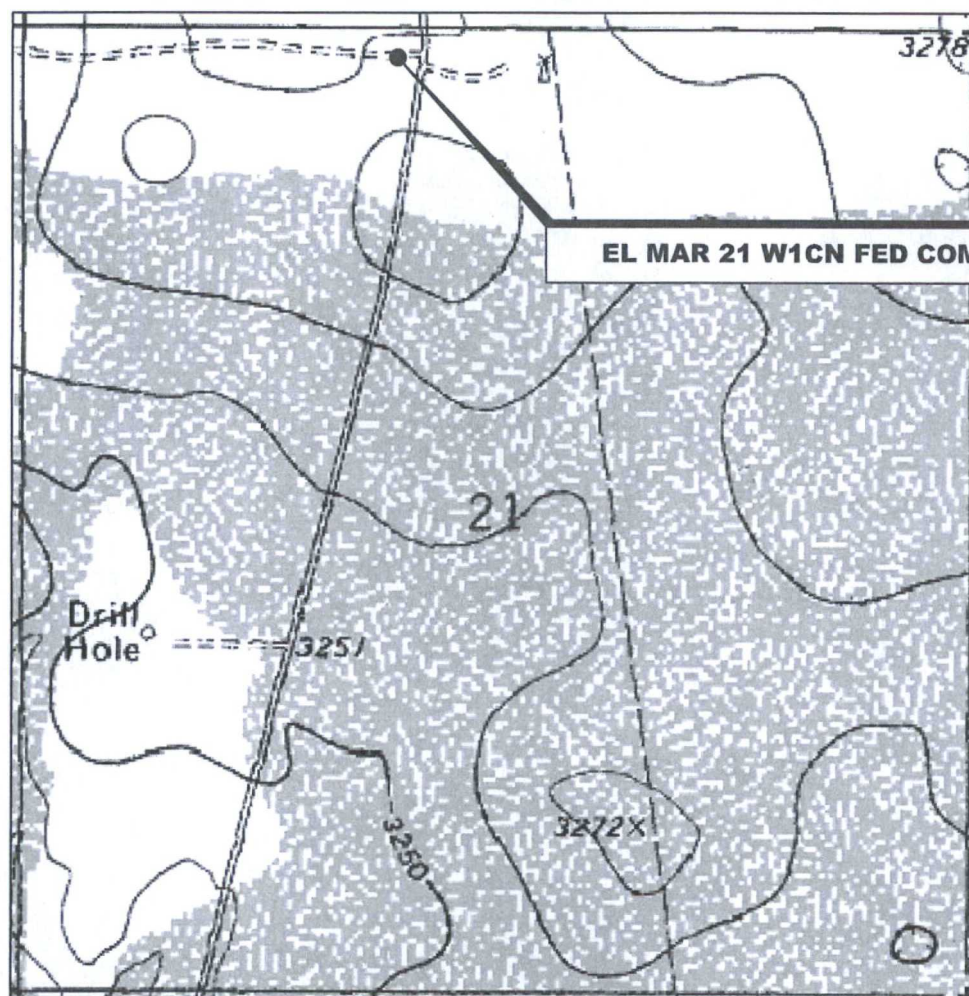
NO.	REVISION	DATE
JOB NO.:	LS140428	
DWG. NO.:	140428PAD	

RRC

308 W. BROADWAY ST., HOBBS, NM 88240 (575) 964-8200

SCALE: 1" = 100'
DATE: 10-23-2014
SURVEYED BY: BK/KR
DRAWN BY: ARJ
APPROVED BY: RMH
SHEET : 1 OF 1

LOCATION VERIFICATION MAP



*SECTION 21, TWP. 26 SOUTH, RGE. 33 EAST,
N. M. P. M., LEA CO., NEW MEXICO*

OPERATOR: Mewbourne Oil Company
 LEASE: El Mar 21 W1CN Fed Com
 WELL NO.: 3H
 ELEVATION: 3274'

LOCATION: 190' FNL & 1905' FWL
 CONTOUR INTERVAL: 10'
 USGS TOPO. SOURCE MAP:
Paduca Breaks East, NM (1973)

Firm No.: TX 10193838 NM 4655451

Copyright 2014 - All Rights Reserved

NO.	REVISION	DATE
JOB NO.: LS140428		
DWG. NO.: 140428LVM		

RRC

308 W. BROADWAY ST., HOBBS, NM 88240 (575) 964-8200

SCALE: 1"=1000'
DATE: 10-23-2014
SURVEYED BY: BK/KR
DRAWN BY: ARJ
APPROVED BY: RMH
SHEET : 1 OF 1

VICINITY MAP

NOT TO SCALE

EL MAR 21 W1CN FED COM #3H



SECTION 21, TWP. 26 SOUTH, RGE. 33 EAST,
N. M. P. M., LEA CO., NEW MEXICO

OPERATOR: Mewbourne Oil Company
LEASE: El Mar 21 W1CN Fed Com
WELL NO.: 3H

LOCATION: 190' FNL & 1905' FWL
ELEVATION: 3274'

Firm No.: TX 10193838 NM 4655451

Copyright 2014 - All Rights Reserved

NO.	REVISION	DATE
JOB NO.:	LS140428	
DWG. NO.:	140428VM	

RRC

308 W. BROADWAY ST., HOBBS, NM 88240 (575) 964-8200

SCALE: NTS
DATE: 10-23-2014
SURVEYED BY: BK/KR
DRAWN BY: ARJ
APPROVED BY: RMH
SHEET : 1 OF 1