

DISTRICT I  
1625 N. French Dr., Hobbs, NM 88240  
Phone: (575) 393-6161 Fax: (575) 393-0720

DISTRICT II  
811 S. First St., Artesia, NM 88210  
Phone: (575) 748-1263 Fax: (575) 748-9720

DISTRICT III  
1000 Rio Brazos Rd., Aztec, NM 87410  
Phone: (505) 334-6178 Fax: (505) 334-6170

DISTRICT IV  
1220 S. St. Francis Dr., Santa Fe, NM 87505  
Phone: (505) 476-3480 Fax: (505) 476-3482

State of New Mexico  
Energy, Minerals & Natural Resources Department

OIL CONSERVATION DIVISION  
1220 South St. Frances Dr.  
Santa Fe, NM 87505

HOBBS OCD

Form C-102  
Revised August 1, 2011  
Submit one copy to appropriate  
District Office

FEB 16 2016

RECEIVED

☐ AMENDED REPORT

WELL LOCATION AND ACREAGE DEDICATION PLAT

API Number 30-025-43076	Pool Code 37570	Pool Name Lea; Bone Spring
Property Code 302802	Property Name LEA UNIT	Well Number 36H
OGRID No. 240974	Operator Name LEGACY RESERVES OPERATING LP	Elevation 3677'

Surface Location

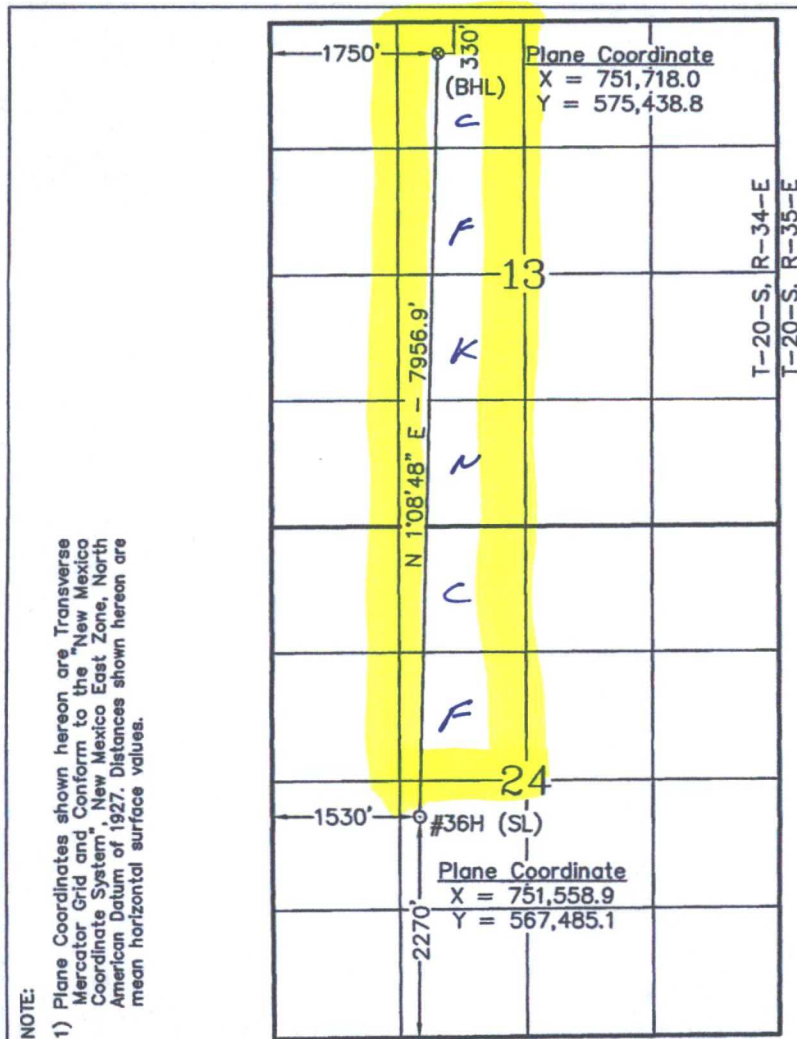
UL or lot No.	Section	Township	Range	Lot Idn	Feet from the	North/South line	Feet from the	East/West line	County
K	24	20 S	34 E		2270	SOUTH	1530	WEST	LEA

Bottom Hole Location If Different From Surface

UL or lot No.	Section	Township	Range	Lot Idn	Feet from the	North/South line	Feet from the	East/West line	County
C	13	20 S	34 E		330	NORTH	1750	WEST	LEA

Dedicated Acres	Joint or Infill	Consolidation Code	Order No.
240			

NO ALLOWABLE WILL BE ASSIGNED TO THIS COMPLETION UNTIL ALL INTERESTS HAVE BEEN CONSOLIDATED OR A NON-STANDARD UNIT HAS BEEN APPROVED BY THE DIVISION



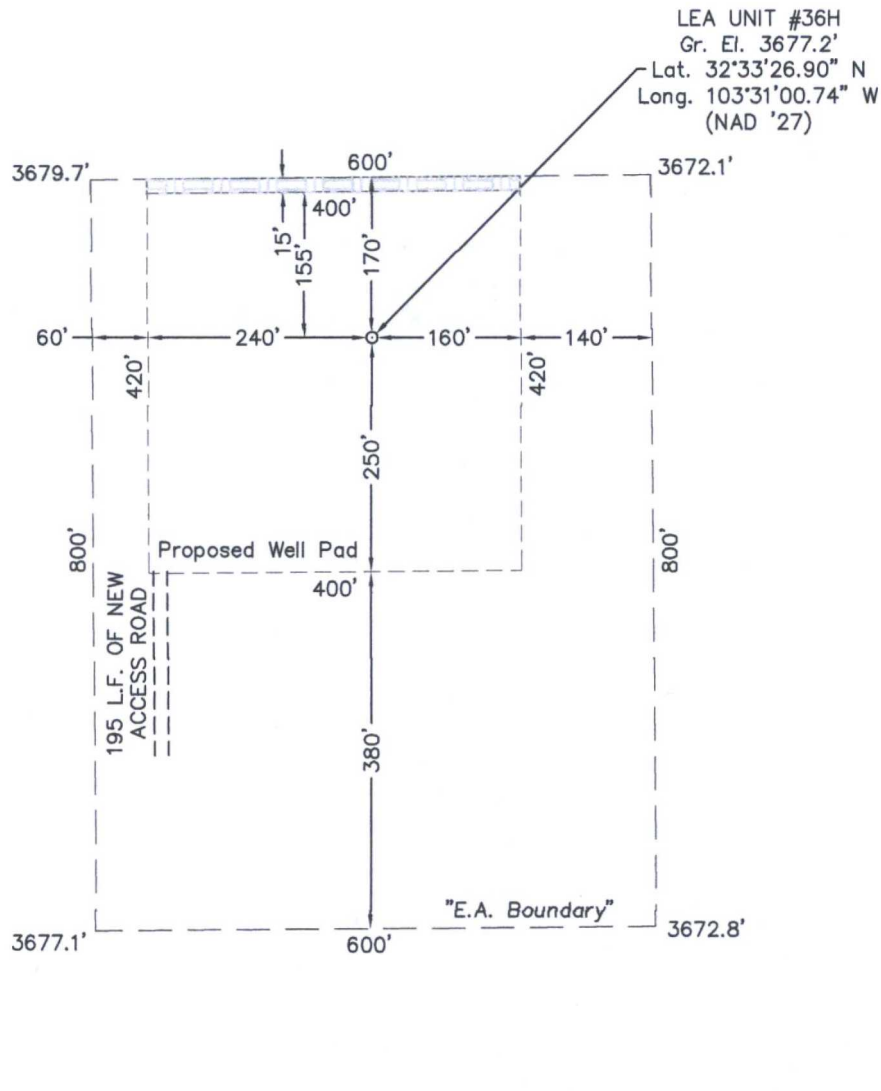
<b>OPERATOR CERTIFICATION</b> I hereby certify that the information contained herein is true and complete to the best of my knowledge and belief, and that this organization either owns a working interest or unleased mineral interest in the land including the proposed bottom hole location or has a right to drill this well at this location pursuant to a contract with an owner of such a mineral or working interest, or to a voluntary pooling agreement or a compulsory pooling order heretofore entered by the division.  Signature: <i>Barry W. Hunt</i> Date: 9/7/15 Printed Name: Barry W. Hunt  E-mail Address: _____	
<b>SURVEYOR CERTIFICATION</b> I hereby certify that the well location shown on this plat was plotted from field notes of actual surveys made by me or under my supervision, and that the same is true and correct to the best of my belief.  June 25, 2015 Date of Survey Signature & Seal of Professional Surveyor  W.O. Num. 2015-0416-V Certificate No. Macon McDonald 12185	

Scale  
1" = 2000'

FEB 18 2016

**SECTION 24, TOWNSHIP 20 SOUTH, RANGE 34 EAST, N.M.P.M.  
LEA COUNTY  
NEW MEXICO**

2015-0416-V2



**DRIVING DIRECTIONS**

FROM THE INTERSECTION OF STATE HIGHWAY 18 AND U.S. HIGHWAY 62-180 IN HOBBS, NEW MEXICO, GO WEST AND SOUTHWEST ON U.S. HIGHWAY 62-180 23.6 MILES TO MARATHON ROAD / CO. RD. 27-A ON SOUTH (LEFT) SIDE OF THE HIGHWAY. THEN GO SOUTH 5.6 MILES TO A LEASE ROAD ON THE EAST (LEFT) SIDE OF THE ROAD, THEN GO EAST ON LEASE ROAD 0.3 MILE TO A POINT APPROXIMATELY 460 FEET SOUTH OF THE PROPOSED LOCATION.

LEGACY RESERVES OPERATING LP

LEA UNIT #36H

Located 2270' FSL & 1530' FWL, Section 24  
Township 20 South, Range 34 East, N.M.P.M.  
Lea County, New Mexico

Drawn By: SC

Date: July 8, 2015

Scale: 1" = 200'

Field Book: 587 / 53-55

Revision Date:

Quadrangle: Lea

W.O. No: 2015-0416

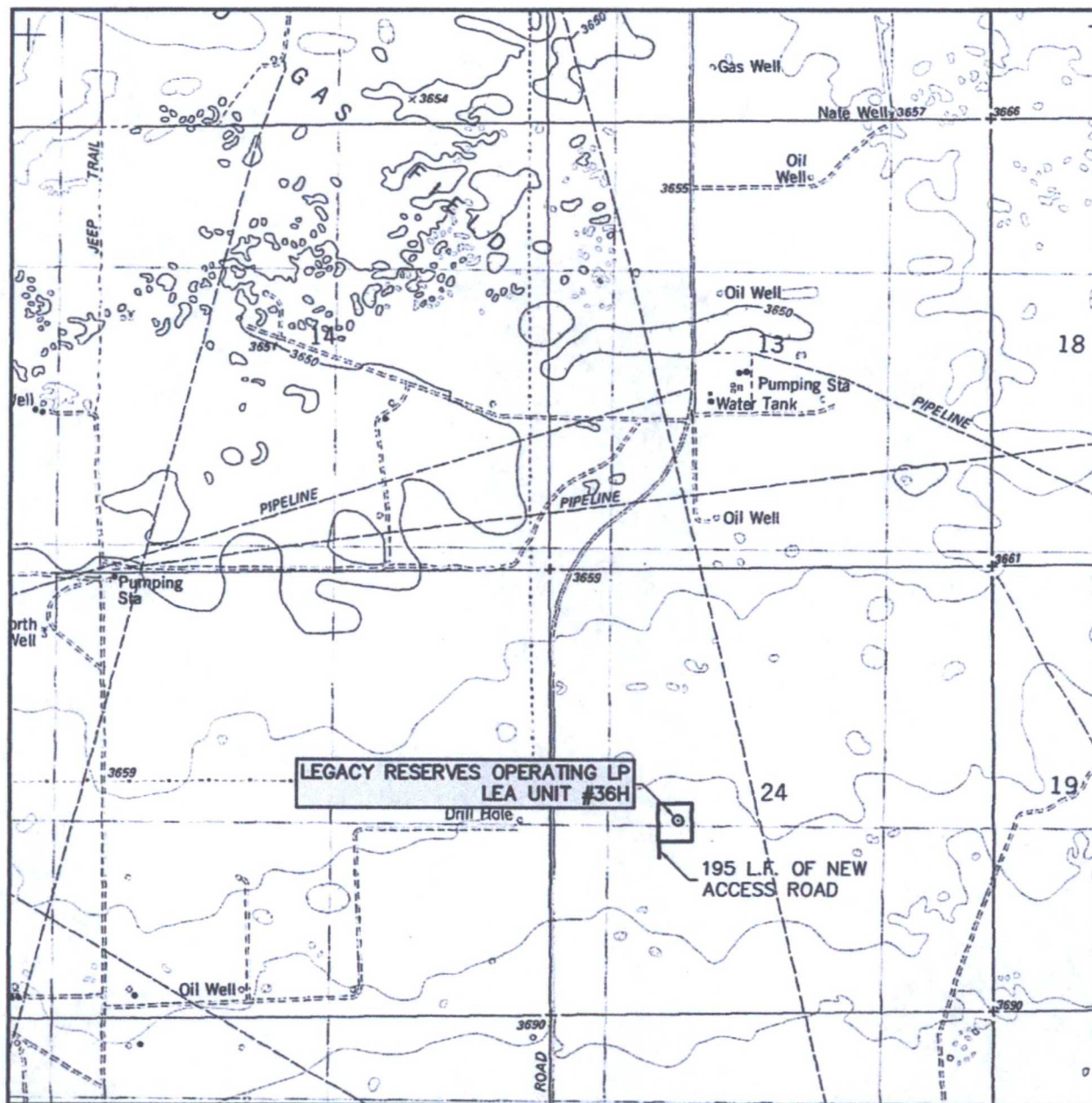
Dwg. No.: 2015-0416-V2



SURVEYORS - ENGINEERS - PLANNERS  
110 W. LOUISIANA AVE., SUITE 110  
MIDLAND, TEXAS 79701  
(432) 687-0865 - FAX (432) 687-0868



# LOCATION VERIFICATION MAP



SCALE: 1" = 2000'

CONTOUR INTERVAL:  
LEA - 10'

SEC. 24 TWP. 20-S RGE. 34-E

SURVEY \_\_\_\_\_ N.M.P.M.

COUNTY \_\_\_\_\_ LEA

DESCRIPTION 2270' FSL & 1530' FWL

ELEVATION 3677'

OPERATOR LEGACY RESERVES OPERATING LP

LEASE \_\_\_\_\_ LEA UNIT

U.S.G.S. TOPOGRAPHIC MAP

LEA \_\_\_\_\_



**WEST  
COMPANY**  
of Midland, LLC

FIRM REGISTRATION NUMBER: 100682-00  
110 W. LOUISIANA, STE. 110  
MIDLAND TEXAS, 79701  
(432) 687-0865 - (432) 687-0868 FAX



# Exhibit A+B

Access

+

one mile

3" = 1 mile

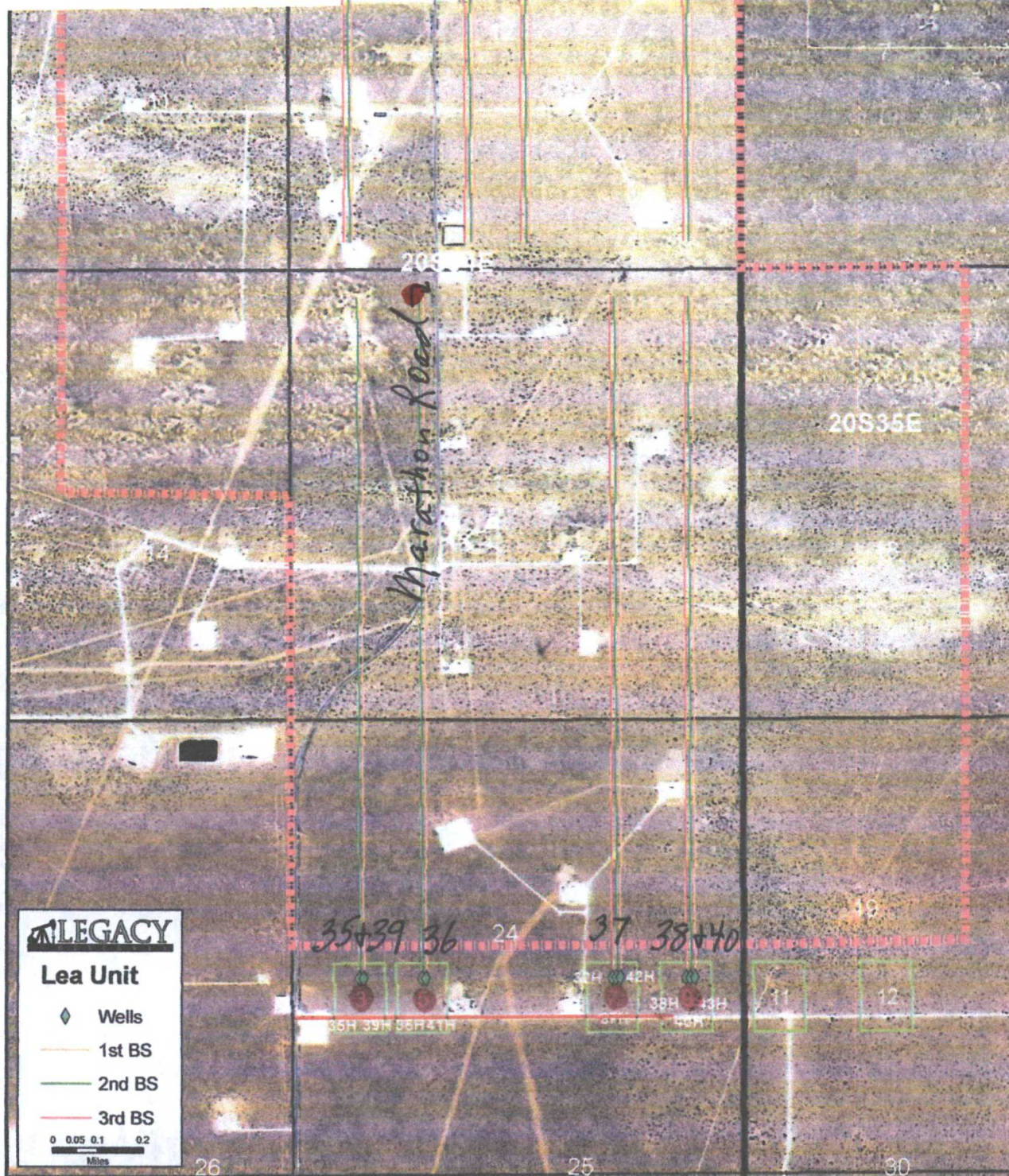
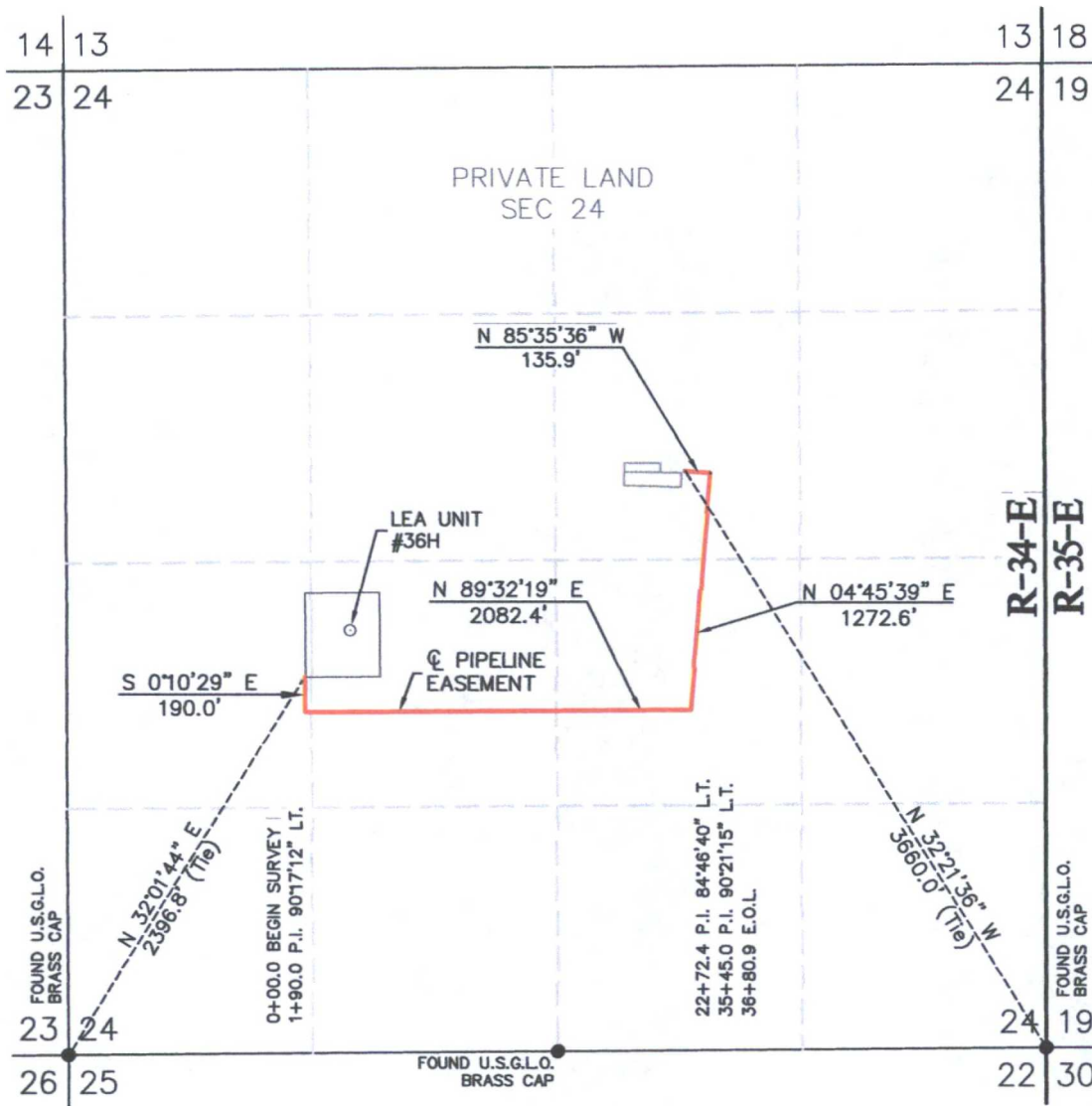




Exhibit E

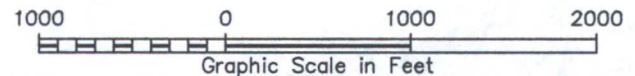
SECTION 24, TOWNSHIP 20 SOUTH, RANGE 34 EAST, N.M.P.M.  
LEA COUNTY NEW MEXICO



FlowLine

LEGEND

- - DENOTES FOUND MONUMENT (AS DESCRIBED)
- - DENOTES PIPE LINE



LEGAL DESCRIPTION

A STRIP OF LAND BEING 50 FEET WIDE, 3,680.9 FEET OR 0.697 MILES IN LENGTH AND BEING 25.0 FEET RIGHT AND 25.0 FEET LEFT OF THE ABOVE PLATTED CENTERLINE.

LEGACY RESERVES OPERATING LP

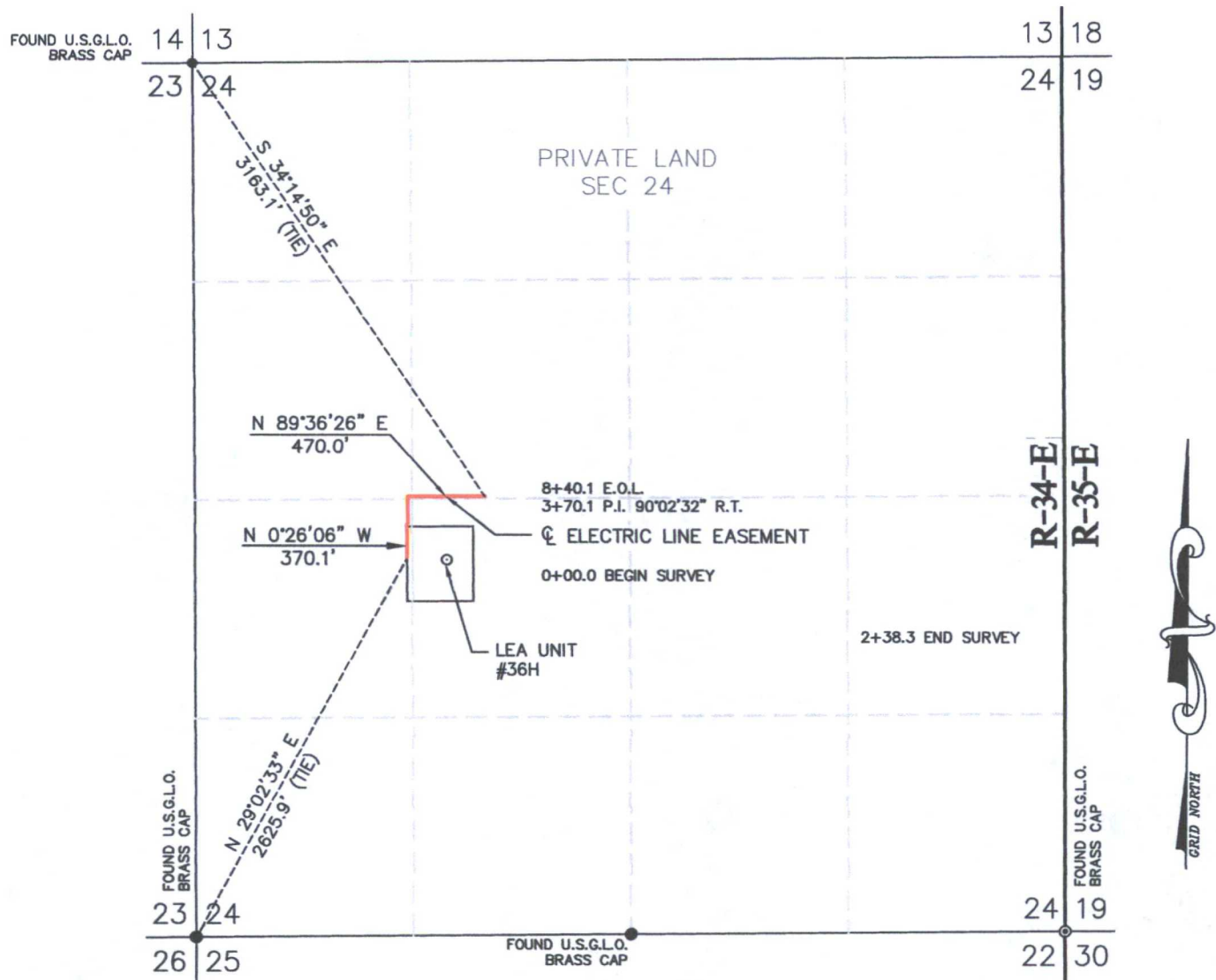
A PIPELINE EASEMENT LOCATED ON  
FEE LAND IN SECTION 24  
TOWNSHIP 20 SOUTH, RANGE 34 EAST,  
N.M.P.M., LEA COUNTY, NEW MEXICO



SURVEYORS - ENGINEERS - PLANNERS  
110 W. LOUISIANA AVE., SUITE 110  
MIDLAND, TEXAS 79701  
(432) 687-0865 - FAX (432) 687-0868

Survey Date: June 25, 2015	Sheet 1 of 1 Sheets
W.O. Number: 2015-0416	Drawn By: SC
Date: July 8, 2015	2015-0416-V4.DWG
Scale: 1" = 1000'	

SECTION 24, TOWNSHIP 20 SOUTH, RANGE 34 EAST, N.M.P.M.  
LEA COUNTY NEW MEXICO

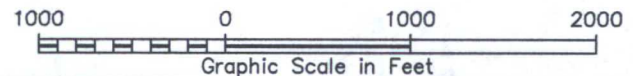


### LEGAL DESCRIPTION

A STRIP OF LAND BEING 50 FEET WIDE, 840.1 FEET OR 0.159 MILES IN LENGTH AND BEING 25.0 FEET RIGHT AND 25.0 FEET LEFT OF THE ABOVE PLATTED CENTERLINE.

### LEGEND

- - DENOTES FOUND MONUMENT (AS DESCRIBED)  
 — - DENOTES CENTERLINE ELECTRIC EASEMENT



## LEGACY RESERVES OPERATING LP

AN ELECTRIC LINE EASEMENT LOCATED ON  
FEE LAND IN SECTION 24  
TOWNSHIP 20 SOUTH, RANGE 34 EAST,  
N.M.P.M., LEA COUNTY, NEW MEXICO

**SURVEYORS - ENGINEERS - PLANNERS**  
110 W. LOUISIANA AVE., SUITE 110  
MIDLAND, TEXAS 79701  
(432) 687-0865 - FAX (432) 687-0868



**WEST COMPANY**  
Land Surveyors ■ Civil Engineers

Survey Date: June 25, 2015

Sheet 1 of 1 Sheets

W.O. Number: 2015-0416

Drawn By: SC

Date: July 8, 2015

2015-0416-V5.DWG

Scale: 1" = 1000'